



The 35mm SLR Photo

SourceBook

Section 7

Copy Stands and General Accessories

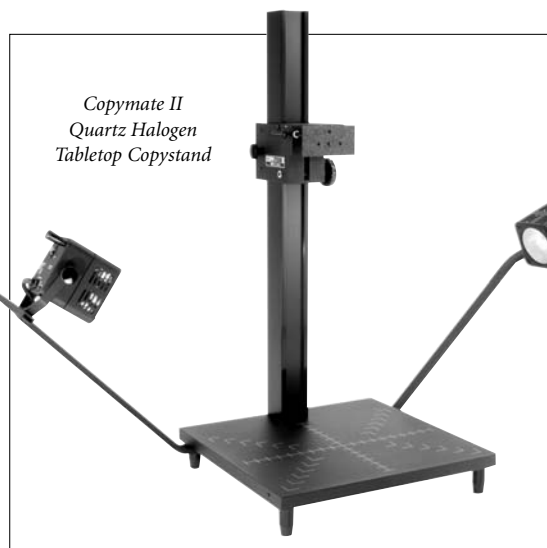
Bencher	626
Beseler	627
Bogen.....	628-629
Kaiser.....	630-633
Testrite.....	634-635
General Accessories	635-643

BENCHER

COPYMATE II

COPY STANDS

626



Tabletop Copy Stand

The Copymate II is a versatile system ideal for anyone using 35mm or lightweight video cameras weighing up to 5 lbs. The basic version of the user-friendly Copymate II includes a rigid 3' aluminum column and a 16 x 20" gray laminate baseboard with a complete grid for easy copy positioning. The optional lights and light arms mount at the rear of the baseboard to allow easy copying of oversized originals. A unique dual brake locking system eliminates lateral carriage shift assuring precise positioning of the camera carriage. The camera carriage features two machined steel shafts with a 3.5" front-to-back travel which allow easy centering of the camera lens over the baseboard. Column and carriage come with mounting bolts and washer plate. A full range of accessories is available for the Copymate II including quartz halogen (3200K) or fluorescent (5000K) lighting, light

baffles, polarizing filters, and book and copy hold-down easels. An optional light intensity control is available for quartz lighting to reduce heat, energy expense and increasing lamp life.

Copymate II Tabletop Copystand (BECM2TT)

Consists of a center column, carriage and baseboard only. Doesn't include any lights. Weighs 29 lbs.....**389.95**

Copymate II Quartz Halogen Tabletop Copystand (BECM2Q)

Same as above plus sidelight arms and two 300-watt quartz halogen copy lights. Weighs 36 lbs**624.95**

Copymate II Quartz Halogen Tabletop Copystand with Heavy Duty Spring (BECM2QWHDS)

Same as above except it incorporates a factory-installed heavy-duty counter-balance spring that allows the carriage to hold cameras weighing up to 8 lbs. Weighs 41 lbs.....**674.95**

Copymate II Tabletop Producer (BECM2PQ)

Same as BECM2Q plus it incorporates a dimmer switch to lower light output for focusing and composing. Reduces heat, energy expense and increases lamp life. Weighs 38 lbs.....**724.95**

Copymate II Quartz Halogen Tabletop Producer with Heavy Duty Spring (BECM2PWHDS)

Same as above except it incorporates a factory-installed heavy-duty counter-balance spring that allows the carriage to hold cameras weighing up to 8 lbs. Weighs 41 lbs.....**782.95**

Copymate II Fluorescent Tabletop Producer (BECM2PF)

Complete copystand with high frequency fluorescent lights and light arms, one each side. Ideal for digital imaging and specimen photography these cool full spectrum fluorescent lamps are daylight balanced at 5000K for superb color clarity and operate at 12,000Hz to eliminate flickering in video applications. Free standing light control has on/off main switch and on/off switch for left lamp to permit shadowing on raised, embossed or bas-relief subject matter. Total 72-watt output equivalent to approximately 200-watts of incandescent lighting. Weighs 33 lbs**854.95**

Copymate II Fluorescent Tabletop Producer with Heavy Duty Spring (BECM2PFWHDS)

Same as above except it incorporates a factory-installed heavy-duty counter-balance spring that allows the carriage to hold cameras weighing up to 8 lbs. Weighs 33 lbs.....**854.95**

Book Hold-Down for Copymate II (BEBHDCM2)

A special easel designed to hold books open for photography or A/V use. Protects valuable books by putting only the weight of the sheet against the pages and binding. Foam rubber blocks support the thinner open side of the book, gently holding the pages against the glass. The book holder clamps to the baseboard. Glass working area: 16 x 13.5" (WxD). Accepts materials to 3.5" thick.....**199.50**



EQUIPMENT LEASING AVAILABLE

Copy Stand

The CS-14 Copy Stand offers reliable Beseler performance, an 18% gray baseboard with grid and magnetic copy hold-down bars, and a unique, adjustable camera platform that facilitates the precise alignment of the optical axis of the camera over the exact center of the baseboard. Copy positioning is aided by multiple positioning grids, format patterns and reference scales on the baseboard. The camera moves on a single, straight vertical column, aided by a constant force, counterbalanced elevation system. The turn of a knob locks the camera in position at the desired height. The column is anchored to the 16 x 19" baseboard at four points and accepts any camera up to 5 lbs. Maximum recommended copy size is 14 x 14".



- ◆ Accepts a wide range of camera systems
- ◆ A uniquely adjustable camera platform facilitates the precise alignment of the optical axis of the camera over the exact center of the baseboard. (Positioning grids on the 18% grey baseboard aids in alignment).

- ◆ Options, like the Beseler CLA copylight arms with industry standard 3/8" mounting studs accept almost any lighting system.
- ◆ Four lights can be mounted onto the universal 3/8" studs which are positioned for the best illumination control

- ◆ Additional calibrations and controls are available to enhance operation and output
- ◆ Magnetic holddown bars locate the copy and keep it flat and in place

CS-14 Copy Stand (BECS14).....214.95

Copystand Kits for the CS-14 or CS Digital/Photo-Video

Consists of copystand, CLA light arms (BECLA), set of two CL-600 copy lights (BECL600) and two R50 5" reflectors (BER5CL). The arms are supplied with four positionable universal light mounting brackets with 3/8" mounting stud for CL-600 lights. Economical and convenient, the CL-600 copy lights are ready-to-use tungsten lamps that provide illumination for all copy work needs. Can be used with standard or reflector lamps up to 600 watts. The R50 reflector is made of hand spun anodized aluminum, chemically etched to maximize light output.

CS-14 Copystand Kit (BECS14K)454.95 Digital/Photo-Video Copystand Kit (BECSDPVK)569.95



CS Digital/Photo-Video Copy Stand

The CS Digital/Photo-Video Copy Stand has an updated counterbalance and is suitable for cameras weighing up to 16 lbs. The stand emulates the rigid twin E-channel centerbraced column so popular in the 45V-XL enlarger chassis design. A rack and pinion elevation system positions your still, digital or video camera where it can be easily locked into position. Three axis, lateral adjustments and alignments are easily made using the camera platform bracket. The 44" tall column is securely mounted to a 22 x 28" baseboard. Maximum recommended copy is 20 x 20".

- ◆ Heavy duty copy stand for multiple applications including photo, video and digital use

- ◆ Rack and pinion elevation system
- ◆ Three axis, lateral adjustments

CS Digital/Photo-Video Copy Stand (BECSDPV).....419.95



BOGEN

REPRO COPY STANDS

COPY STANDS

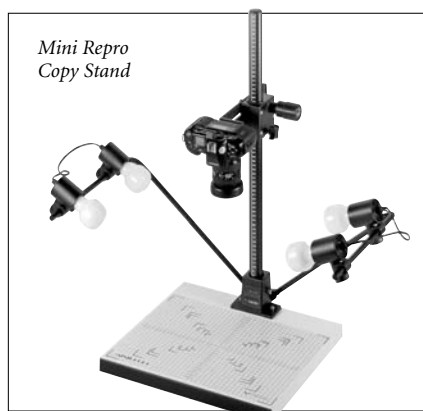
628

For photographers who are seeking solidly-built, full-featured copystands, Bogen offers a full line of versatile, precision-made items. Available in configurations to meet every copy need, the Repro line can accommodate still and video cameras in all formats and weights. For rock-solid performance, see the System 800 lineup, which is built for steady, heavy-use performance for the busiest copy studio. Photographers with budgetary constraints or low traffic copy work may want to consider the Mini Repro. No matter what your needs, however, there is a Bogen copystand that is right for you.

Mini Repro Copystands

Mini Repro (BO1700)

This easy-to-use, economical copystand is suitable for video and still cameras up to medium format and is ideally suited for macro photography and day-to-day copy work. The Mini Repro features a ruled black anodized column that is geared for precise camera positioning. Grid marks on the baseboard help you position and align the original artwork. The column height is 27.5", the base is 15.5 x 16.5", and it weighs 15 lbs.....**184.95**

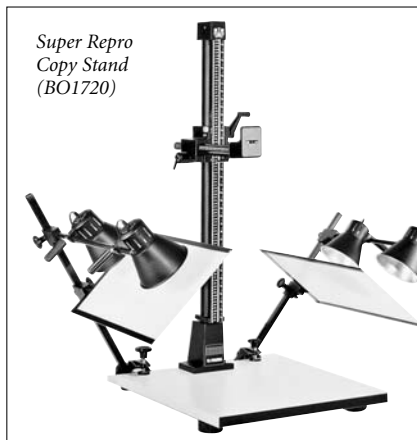


Mini Repro
Copy Stand

Mini Repro (BO1704)

Same as above Mini Repro, but with 4-light assembly. Weighs 20 lbs.....**299.95**

Super Repro Copystands



Super Repro
Copy Stand
(BO1720)

Super Repro Copy Stand with Baseboard (BO1730)

This solidly-built copy stand offers loads of features, including a counter-balanced, ruled and 53" geared column; a camera arm that is geared for precise front to back centering and a camera leveling guide built into the camera platform. A geared accessory arm offers side-to-side movement, that lets you create animation effects similar to those done on more expensive animation stands. The overall height is 57.5"; the maximum height is 48"; and the minimum height is 7.5". Camera arm adjustment from column is 3-19". The baseboard measures 27.5 x 35.5". It weighs 67 lbs**699.95**

Super Repro Copy Stand with Baseboard (BO1720)

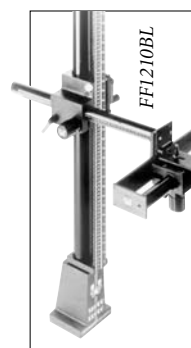
Featuring the same impressive range of features as the above Super Repro, but with a 43" column. The overall height is 47.5", the maximum elevation is 38", and the minimum elevation is 7.5". The camera arm is adjustable 3-19" from the column. The baseboard is 24 x 26.5". Weighs 50 lbs**679.95**

Super Repro Copy Stand with Baseboard (BO1723)

A Super Repro with a 43" column and a 27.5 x 35.5" baseboard. Weighs 67 lbs.....**729.95**

Super Repro Copystand with Table and Light Box (BOFF1738)

The Super Repro Copy Stand with table and light box. It weighs 117 lbs.....**1709.95**



Super Repro Column (BOFF1210BL)

43" column only (without baseboard). It weighs 26 lbs**629.95**

Super Repro Column (BOFF1220BL)

53" column only (without baseboard). Weighs 26 lbs**629.95**

Repro Copystands

Repro Copy Stand with Baseboard (BO1710)

The Repro features a sturdy geared and ruled column that is suitable for both still and video cameras and can be rotated to copy artwork that is larger than the baseboard. Horizontal camera arm length is adjustable in four equal increments. Maximum height is 41"; column height is 46"; minimum height is 7.5". Camera arm is adjustable 4-12" from column. The baseboard is 24 x 26.5". Weight: 40 lbs**459.95**

Repro Copy Stand with Baseboard (BO1713)

Same as the above Repro Copy Stand, but with 27.5 x 35.5" baseboard. Weighs 57 lbs**489.95**

Repro Center Column (BOFF1200BL)

Repro column only, without baseboard. Weight: 16 lbs**381.95**



BOGEN

SYSTEM 800 COPY STAND

System 800 Repro Copy Stand (BOFF1740)

A motorized copystand for professional reproduction of transparencies and reflective originals. The column is mounted on a rock-solid 31.5 x 27.5" table with a magnetic baseboard. The ball-bearing horizontal support arm mount, which can be adjusted for the optimum optical center, will accommodate any camera up to 8x10 format, or any video camera that weighs up to 44 lbs. The camera is raised and lowered via a variable-speed motor drive. Lights, light boxes, barndoors and hinged glass accessories are available for this state-of-the-art stand. Maximum height is 82.8", column height 59" and base 27.5 x 31.5". Weighs 114.5 lbs.....**2876.95**

System 800 Repro Copy Stand (BOFF1741)

Same as the above System 800, but outfitted with a light box instead of a magnetic baseboard. Weighs 155 lbs.....**3229.95**

System 800 shown with Repro System Lights, Diffusion Panels, and a Varilight 2000 Power Supply



System 800 shown with a Four Light Assembly



COPY STANDS

629

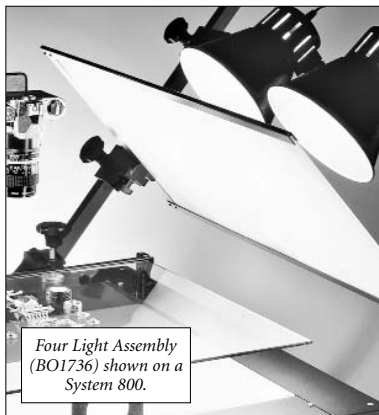
COPY STAND ACCESSORIES

4-Light Lighting Assembly (BO1705)

Four Tungsten Reflector Heads in lighting assembly. Fits the Mini Repro Stand. Weighs 5 lbs.....**119.95**

Fixed Barndoors (FF1196)

Set of 4 fixed barndoors for the Mini Repro Lights.....**29.95**



Four Light Assembly (BO1736) shown on a System 800.

Lighting Assembly (BO1735)

Comes with two Tungsten Reflector Heads and fits all Repro Copy Stands. It includes medium screw base sockets and accepts BBA (No. 1 Photoflood) lamps. 16 lbs.....**279.95**

Four Light Assembly (BO1736)

Same as the above Lighting Assembly, but with 4 light heads. For all Repro Copy Stands. Weighs 17 lbs.....**419.95**

E27 Base Quartz Lamp 250w (BO1737)

Medium base lamp, 3200°K**56.95**

Varilight 2000

Power Supply (BOFF1223T115)

For regulating Lightbox intensity on the Super Repro Copy Stand (BOFF1738) and System 800 (BOFF1741)**234.50**

Barndoors for all

Reflector Heads (BOFF1777)

Set of 2 barndoors**74.95**

Diffusion Panels (BOFF1225)

Set of 2. For all Repro Lighting Assemblies**207.95**

Utility Tray with Clamp (BOFF2357)

For the tables on the Super Repro Copy Stand and System 800.....**136.50**

Gear Side Arm (BOFF1227)

Provides precise positioning of the camera on Repro Copy Stands.....**179.95**

Lightbox for System 800 (BOFF1222Y115)

Included with the System 800 (BOFF1741).....**366.95**

Hinged Copy Glass (BOFF1229)

For the tables on the Super Repro Copy Stand (BOFF1738), and System 800 (BOFF1740) and (BOFF1741)**222.50**

Magnetic Baseboard Plate (BOFF1389)

Dimensions are 16½ x 25". For Repro Copy Stands. It is included with System 800 (BOFF1740)**74.50**

ORDER & INFO. (212) 502-6340 • FAX: (212) 239-7770 (800) 947-7008
1-800-290-6750 • www.bhphotovideo.com



KAISER

COPY STANDS

COPY STANDS

630

R1 Universal Flexible Modular System

Kaiser stands consist of a column, a baseboard, a camera arm and a light set. Kaiser allows you to create you own stand by selecting the different components, or by purchasing a complete stand (less lights). This offers you the greatest freedom in assembling the perfect stand for your needs. And it ensures that your stand will grow as your needs expand.

COLUMNS

Wide and extremely vibration-resistant column of embossed aluminum tubing with dull-black anodized surface, with *cm* and *inch* scales. With mount and fastening mechanism for copy arms. Cross sectional dimensions of the column are 2.8 x 1.4".

60" Calibrated

Counter Balanced Column (KACSC60)

Height adjusted by friction gear with nylon bearings, weight compensated by built-in roll spring.....**321.95**

50" Calibrated

Counter Balanced Geared Column (KACSC50)

Height adjusted by gear rack, weight compensated by built-in roll spring, locking screw for fixed height position**414.95**

40" Calibrated

Counter Balanced Column (KACSC40)

Height adjusted by friction gear with nylon bearings, weight compensated by built-in roll spring.....**247.95**

40" Two Speed Calibrated

Counter Balanced Column (KACSC402)

Rack-and-pinion height adjustment by hand crank. Additional fine drive with 1:10 step-down transmission for super-fine adjustment. Counterbalance by built-in roll spring.....**601.95**

BASEBOARDS

Copy baseboard with a mounting base for attaching column. Spirit level in base. Individually height-adjustable feet.

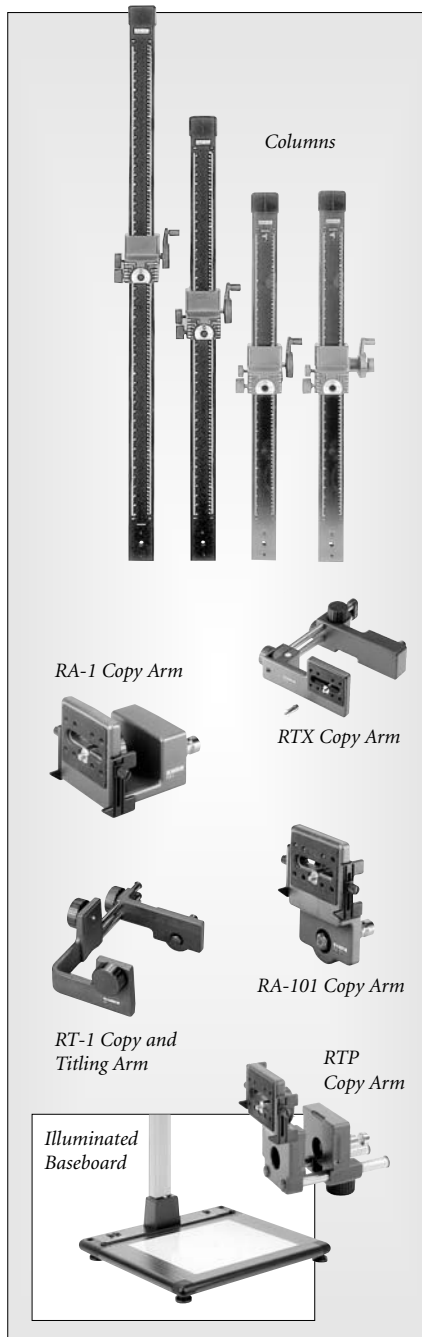
23 x 31.5" Grid Baseboard (KABB2331.5).....218.95

20 x 24" Grid Baseboard (KABB2024).....182.95

18 x 20" Grid Baseboard (KABB1820).....169.95

25 x 22" Illuminated Baseboard (KAIBB2225)

With a 17 x 14" illuminated area. It is equipped with four 13 watt daylight fluorescent lights (5400 K) and high frequency operating system**1249.50**



CAMERA ARMS

RTX Copy Arm (KACARTX)

The RTX extends from 3.75 to 9.06" via a rack drive. Camera mount with level for fine adjustment. Turns $\pm 180^\circ$ and can be fixed in any position. The camera can be mounted on front or rear. Camera mount horizontally adjustable with fine adjustment. The RTX has an interchangeable 1/4" - 3/8" mounting thread**489.95**

RA-1 Copy Arm (KACARA1)

4" deep camera arm. This device for adjusting the camera can be set to different camera bodies. Interchangeable 1/4" - 3/8" mounting thread.....**104.50**

RA-101 Copy Arm (KACARA101)

The RA-101 Copy Arm is 1.2" deep, and is suitable for cameras with a large distance between the tripod thread and the optical axis of the lens. Interchangeable 1/4" - 3/8" mounting thread. Adjusts for different camera bodies**94.95**

RT-1 Copy and Tilting Arm (KACART1)

The RT-1 Copy and Tilting Arm extends from 6.5 to 10". Camera mounting platforms for horizontal and upright formats with interchangeable 1/4" - 3/8" threaded bush and rubber rests. Camera carrier extends horizontally, on parallel arms, and can be locked in any position. The entire copy and tilting arms rotate to allow for reproduction of vertical subjects**208.50**

RA-3 Copy Adapter (KACARA3)

For converting a VP-350 Enlarger to a copy unit. With 1/4" connecting thread. Dimensions are 2.4 x 3.7 x 3.3"**39.50**

RTP Copy Arm (KACARTP)

The RTP Copy Arm is horizontally adjustable to set different distances from the column. It moves 3.2" back and forth and rotates 360° . Guided in parallel. The camera adjusting device can be set to different camera bodies. Reversible mounting thread.....**239.95**



For Any Inquiries Regarding Your Order, Call Our Customer Service:
(800) 221-5743 • (212) 239-7765 • FAX: (800) 947-2215 • (212) 239-7549

KAISER

COPY STANDS

COPY STANDS

631



Repro Kid Copy Stand Kit

A super-compact copy stand for small and lightweight cameras (APS, digital compacts, CCD cameras etc.). It includes a non-reflecting 12.6 x 15" matte black baseboard, a 23.2" calibrated column that incorporates a manually height-adjustable camera arm and a lighting unit with two screw-in sockets for photofloods up to 250 watts each (lamps not included). It has a load capacity of 2.2 lbs.

ReproKid Copy Stand Kit (KACSKK)216.95

COPY STANDS WITH 29" COLUMN

RS2 Copy Stand (KACRS2)

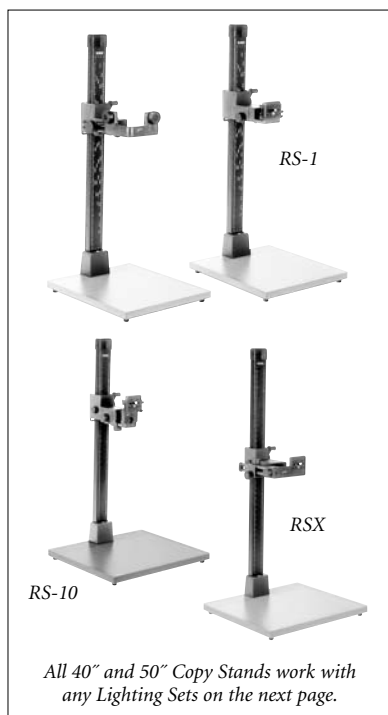
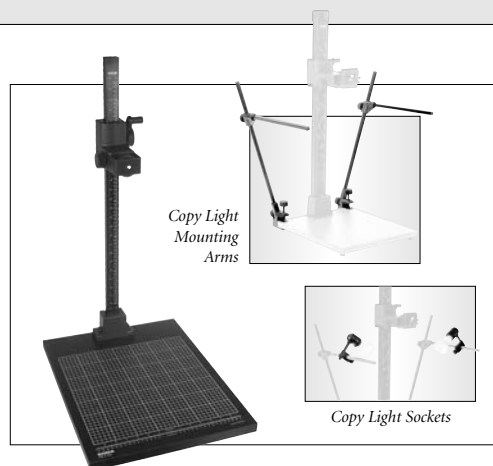
Designed for lighter camera systems, the RS2 Copy Stand comes with a 15.7 x 19.7" non-reflecting, black baseboard with grid markings, and a 30" column with *cm* and *inch* scales. A repro arm with 1/4" mounting screw holds many lighter cameras289.95

Copy Light Mounting Arms (KACLA)

A pair of mounting arms for the RS2 Copy Stand. The arms are adjustable in height and tilt and can be equipped with Copy Light Sockets.....199.95

Copy Light Sockets (KACLS)

For use with the Copy Light Mounting Arms. It comes with two cords (6.5' each) with a cord switch. It requires two 250w lamps, which are not included57.95



COPY STANDS WITH 40" COUNTER-BALANCED COLUMN

RS1 Copy Stand (KACRS1RA1)

This high-quality copy stand features a non-reflecting 17.7 x 19.7" matte black baseboard with grid surface marking, an extra-wide, vibration-resistant 39.4" dull black anodized embossed aluminum tube column with *cm* and *inch* scales, and a spirit-level in the column base. The height is adjusted by a friction drive with nylon bearings and hand crank. A 4" deep RA1 Copy Arm for different camera bodies394.95

RS1 Copy Stand (KACRS1RT1)

Same as the above RS1, but with an RT1 Copy Arm which has two camera fastening points and interchangeable threaded bush 1/4", 3/8". The camera carrier pivots and slides horizontally.....524.95

RS10 Copy Stand (KACRS10)

Similar to the RS1 Copy Stands, the RS10 features a 39" column, a 23.6 x 19.7" baseboard and an adjustable copy arm which moves 3.1" back and forth.....832.95

Copylizer "eVision exe.cutive" (KACSCE)

A complete reflected/transmitted light/stand combination, for capturing originals of all kinds, including three-dimensional objects. The 25 x 22" baseboard has an illuminated area of 16.9 x 13.8", and is fitted with four 13w daylight fluorescent lamps (5000 K). The low-vibration column is 40" high and is equipped with the RTP adjustable camera arm.....1449.50

COPY STAND WITH 50" COUNTER-BALANCED COLUMN

RSX Copy Stand (KACRSX)

Big non-reflecting matte black baseplate embossed with grid and *cm* scale. The RSX features height adjustable feet, a spirit-level in the column base, a low-vibration 4" anodized aluminum tube column with *cm* and *inch* scales, a 23.6 x 19.7" baseplate and an RTX copy arm with an adjustable and pivotable camera holder859.95

All 40" and 50" Copy Stands work with any Lighting Sets on the next page.

ORDER & INFO. (212) 502-6340 • FAX: (212) 239-7770 (800) 947-7008
1-800-290-6750 • www.bhphotovideo.com



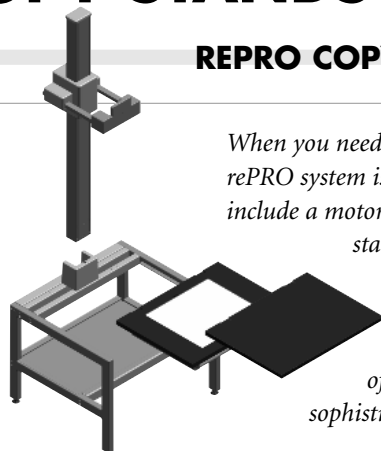
KAISER

COPY STANDS

COPY STANDS

632

REPRO COPY STAND SYSTEM



When you need maximum stability and load capacity, the rePRO system is the choice for you. System components include a motorized 60" column, a baseboard, or a floor stand that can be equipped with a large drop-in base plate for reflective originals, and lighting units. This professional work station – equipped with a camera system of your choice – offers optimum conditions for sophisticated image capturing tasks.

RSP 60" Motorized Column with Camera Carrier (KACSCRSP)

This rePRO stand is for professional use. The black anodized aluminum column has both *cm* and *inch* scales. The camera carrier offers remote controlled two-speed motorized height adjustment, with constant speed, independent of the camera weight. The self-inhibiting spindle drive holds the camera platform precisely at any height, even during a power failure. Horizontal adjustment is with parallel guides via a manual friction drive. Adjustment crank and locking screw on the left and right sides. A spirit level is built-in for adjustment to parallel axis setting. The camera mounting plate tilts $\pm 90^\circ$, and can be locked on two sides**3638.95**

Floor Stand for RSP Column (205615)

A steel tube stand with an integrated spirit level, a die-cast aluminum base for mounting the RSP Motorized Column, and a shelf underneath the working area. The feet can be height-adjusted individually. Its dimensions are 34.6 x 26 x 30.7"**809.95**

Baseboard for RSP Floor Stand (205616)

Non-reflecting, plastic-laminated, high-compressed wooden 32 x 24" baseboard, with a fine grid and *cm/inch* scales. It includes a slide-in carrier for the optional lighting unit control box.....**346.95**

Wall Mount for RSP Column (KABWMRP)

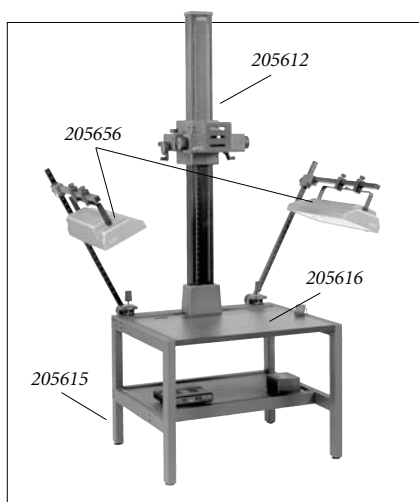
For the RSP Motorized Column. The top section is adjustable for vertical positioning. The lower part has a base, spirit level and a power supply compartment. The column is 14" from the wall, the camera mounting plate is 20-29" from the wall.**519.95**

RB 5056 HF Lighting Unit (KACLRB5005)

A lighting unit with two light banks, each equipped with two 5400K daylight fluorescent lamps. High frequency operating system for non-flicker start-up and running. Lights can be tilted and shifted individually. The switch box can be mounted below the base board.....**1869.95**

RB 5005 Flash Lighting Unit (KACLRB5005F)

Combined flash/continuous light unit with two light banks, each fitted with one flash lamp and two daylight fluorescent lamps. Flash unit with automatic flash discharge, power control, flash ready display, synchro and manual triggering. Continuous light can be used for set-up and shooting purposes independently from flash light. Electronic high frequency operating system for flicker-free lighting.....**4699.95**



ACCESSORIES



Table Frame (KACST)

For the RS1, R10 and RSX camera stands. Height-adjustable feet. Slide-in compartment for copy light control box. 22.8 x 23.6 x 20.1"**482.50**



BASEBOARD OVERLAYS

For the Copylizer "eVision executive" and the 25 x 22" Illuminated Baseboard. They can be fitted to the hinge of the base plate and easily lifted.

Hinged Glass Overlay (KAOLGCEVE)

Pressure plate made of high quality crystal glass with adjustable stop guides.....**188.95**

Metal Base (KAOLGMCEVE)

Neutral gray (18% reflection) protective cover with printed grid and adjustable stop for easy positioning. Four round magnets hold the original...**179.50**

Masking Frame (KAOLMFCEVE)

With adjustable masks to prevent stray light when capturing smaller transparent originals from 35mm up to 4 x 5" ...**238.50**



EQUIPMENT LEASING AVAILABLE

LIGHTING SETS FOR COPY STANDS

Copy Light Mounting Arms (KACLA)

A pair of mounting arms for the RS2 Copy Stand. The arms are adjustable in height and tilt and can be equipped with Copy Light Sockets.....**199.95**

Copy Light Sockets (KACLS)

For use with the Copy Light Mounting Arms. It comes with two cords (6.5' each) with a cord switch. It requires two 250w lamps, which are not included**57.95**

RB104 Lighting Unit (KACLRB104)

Supplied with four reflectors and E 27 screw-in threads for photofloods. Lamps (up to 250 watts each) can be tilted and switched on separately. Unit clamps to base boards and tabletops up to 1.8" thick. Cords are 8'. Lamps not included**736.95**

RB2 Copy Light Set (KACLRB2)

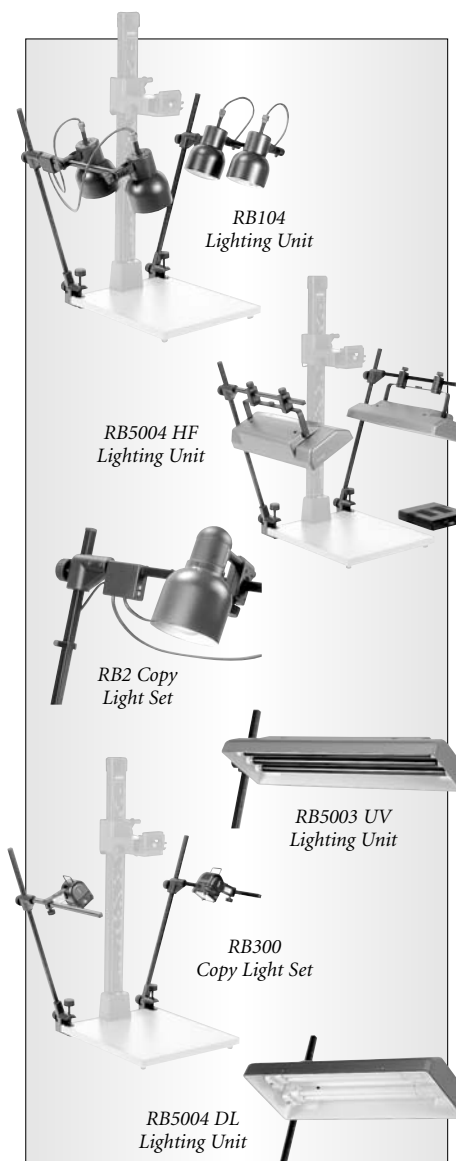
With four tiltable and adjustable reflectors on mounting arms which are in turn tiltable and adjustable in height. For lamps up to 150 watts each, that can be switched on individually. It clamps onto base boards up to 1.8". Two cords are 5" each. Lamps not included**439.95**

RB300 Copy Light Set (KACLRB300)

The RB300 Copy Light Set comes complete with two 300 watt halogen lights. Lights can be shifted, swiveled, and switched on and off separately. Clamps fasten to baseboards or tabletops up to 1.8"**453.95**

RB5000 DL Lighting Unit (KACLRB5000Q)

Lighting unit with two light banks, each equipped with a 36w daylight-type (5400 K) compact fluorescent lamp. Lamps can be switched on and off individually.....**793.50**



RB5004 HF Lighting Unit (KACLRB5004HF)

Lighting unit with two light banks each equipped with two 36 watt (5400 K) daylight fluorescent lamps. Electronic high frequency operating system for non-flicker start-up and running. Lights can be switched on and off and tilted individually.....**1253.95**

RB218 HF Lighting Unit (KACLRB218HF)

Two reflectors, tilting and adjustable in height, with one 18 watt Dulux (5400 K) fluorescent lamp each. High-frequency operating system. Separate control box**793.50**

RB5003 UV Lighting Unit (KACLRB5003)

UV lighting unit with two light banks, each equipped with three 18 watt UV(A) fluorescent lamps. For special applications in conjunction with inspection of materials, detection and documentation of falsification etc. Special Order**1638.95**

RB 4-36 Copylizer Lighting Unit (KALSRB4.36)

For Copylizer "eVision exe.cutive". Each side light has two 36 watt daylight fluorescent lamps, and are attached at the base. Both reflectors are adjustable in height and can be swiveled individually. The size of the lamps match the base plate, to help achieve even illumination.**1298.95**

RB 4-36 HF Copylizer Lighting Unit

(KALSRB4.36Q)

Same as above except with a high frequency operating system that delivers flicker-free light**1364.95**

RB 8-36 HF Copylizer Lighting Unit

(KALSRB8.36)

Same as the RB 4-36 (above), except that each side light has four 36 watt daylight fluorescent lamps**2459.95**

TO MAKE A STAND...

To Make This Stand:	RS1 Copy Stand (KACSR1RA1)	RS1 Copy Stand (KACSR1RT1)	RS10 Copy Stand (205513)	RSX Copy Stand (KACSRX)	Copylizer "eVision exe.cutive" (KACSCE)
You Need:					
Column	KACSC40	KACSC40	KACSC40	KACSC50	KACSC40
Baseboard	KABB1820	KABB1820	KABB2024	KABB2024	KAIBB2225
Copy Arm	KACARA1	KACART1	KACARTP	KACARTX	KACARTP

TESTRITE

COPY STANDS

COPY STANDS

634

These economical copystands are particularly suitable for students, amateurs and pro operators that wish to add copying capabilities. All cameras from 35mm to 4x5 will fit. Also ideal for Polaroid and video use.

CS-1 Copy Stand (TECS1)

The basic model. Handles small 35mm still cameras and camcorders. It comes with a 14 x 19" baseboard and a 23" steel column. Lights additional**52.50**

CS-1 Copy Stand with Lights (TECS1L)

A CS-1 Copy Stand with a two-light unit that attaches to the baseboard. It comes complete with cord sets, sockets, swivels, aluminum reflectors and wood control knobs**77.95**

CS-2 Copy Stand (TECS2)

Sturdy model features a 16 x 19" baseboard and two interlocking 19" posts which reach 38" altogether. Sliding arm moves smoothly through entire length of dual post**67.50**

CS-2 Copy Stand with Lights (TECS223C)

A CS-2 Copy Stand, packed with a lighting unit, which includes two 12" chrome-plated flexible arms, two sockets with individual on-off switches and two metal reflectors**113.95**

CS-3 Copy Stand (TECS3)

Features two interlocking 1.5" diameter, 19" long posts which reach 38" altogether. Camera bracket permits centering of camera over original. Post locking feature allows travel of arm up and down entire length of posts**89.95**

CS-3 Copy Stand with Lights (TECS32344)

A CS-3 Stand packed with a 16 x 22 1/4" baseboard and a light unit that has 4 aluminum reflectors**135.95**

CS-4 Copy Stand (TECS4)

Features heavy-duty, rigid parallel construction, 3" longer than CS3 arm, 2 interlocking 1.5" diameter 19" long posts which reach 38" altogether. Post locking feature allows travel of arm up and down entire length of posts. Extra-long camera bracket with large lock-up washer permits easy centering over work. Accommodates all copy lights**121.95**

CS-5 Copy Stand (TECS5)

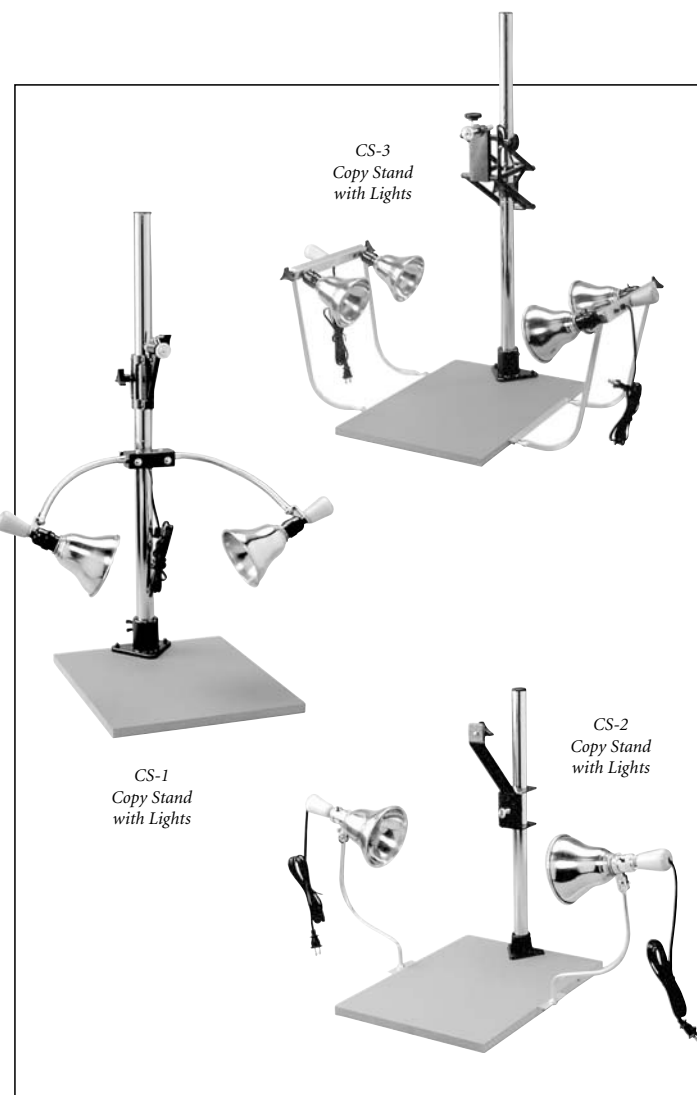
Especially designed for schools, hospitals and pro photographers who require a sturdy, heavy duty copier. Features include: one-piece 2" diameter 34" long chrome plated steel post; a sturdy 20 x 30" baseboard that can accommodate 16 x 20" originals horizontally or vertically; a counterbalance spring that easily supports heavy 4x5 cameras; heavy-duty sliding arm that moves easily up and down post; extra large 6" long camera rod which permits centering over original; sturdy struts from baseboard to top of counterbalance that eliminate vibrations. Will accommodate all copy lights**183.95**

CS-7 Mini Copy Stand (TECS7)

Portable all-aluminum and steel unit features angled legs that can be easily disassembled for storage or travel. 18" steel post holds camera rod that can be set horizontally for copying or vertically for use as a table-top stand. Unit can be placed on glass and shot through for special effects. 23c or 23P copy lights are suitable for this model**45.95**

CS-9 Heavy Duty Stand (TECS9)

The CS-9 has a 36" post that includes inch and centimeter scales. It offers a heavy-duty sliding counterbalanced arm that offers unique squareness adjustment. Wood baseboard offers 20 x 30" workspace with grayscale covering for even illumination verification over the entire board. Camera rod and lock-up knob extends to 3". Height can be adjusted from 7.5 - 36.5"**121.95**



Copy Lights

Copy lights should be at a 45° angle to the work be copied. Use regular household 75w bulbs if the unit has reflectors. for color copying with daylight color film (5500°K), use an 80A and an 82A filter on your camera. With tungsten color film (3200°K), use an 82A filter.

23-C Copy Lights (TECL23C)

Designed to fit in any post from 1/2"-1.5". Clamp arrangement makes it simple to raise and lower light on post. Features two 12" chrome-plated flexible arms, sockets with individual on-off switches, bell-shaped metal reflectors and cool handling wood knobs. Bulbs not included. Weighs 4.5 lbs....\$55.95

23-P Copy Lights (TECL23P)

Similar to model 23-C, but with porcelain sockets to accommodate high-wattage reflector type bulbs. Aluminum reflectors cannot be used on these sockets. Weighs 4 lbs...\$46.95

23-4 Copy Lights (TECL2344)

Used with copy stands, four lights provide even illumination when copying larger originals. Unit is fastened to sides of baseboard by screws. Safety knob permits "cool and easy" adjustment. Includes 4 aluminum reflectors. Weighs 6 lbs\$74.95

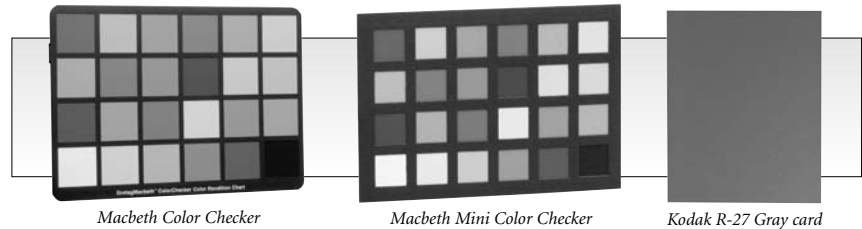
45 Photo & Copy Lights (TECL45)

Designed to do both studio and copy work, these lights can be set to 45° for copy work or swiveled almost horizontal to board for skim or texture lighting effects. Can be raised almost to vertical. Attaches to any wood baseboard. Comes complete with two swivels, four sockets that slide on 1/2" aluminum tubing, and four aluminum reflectors. Weighs 10 lbs\$99.95

50 Copy Lights (TECL50)

Extremely adjustable in all directions. Features four ceramic sockets that accept all standard screw-base bulbs up to 250w. Adjustable for 3-dimensional or flat objects-use to photograph objects as well as for copy work. Use with CS-4, CS-5 and CS-9 copy stands. (Note: Aluminum reflectors cannot be used in these ceramic sockets.).....\$98.95

EXPOSURE GUIDES



Gretag Macbeth Color Checkers

An array of 24 printed color squares, which include spectral simulations of light and dark skin, foliage, etc. It is used for precise color balance when shooting color film. Scientifically engineered to ensure true-to-life images, they are designed to help you recognize, evaluate and adjust colors quickly and efficiently. 9:13 proportions will fill a 35mm frame.

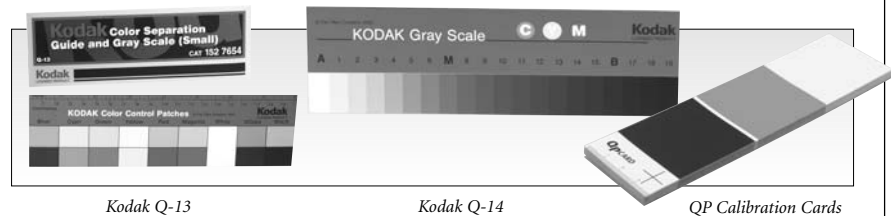
Color Checker 8 x 11.5" #GRCC.....\$66.95 **Mini Color Checker** 2.25 x 3.25" #GRMCC .59.95

Kodak R-27 Gray Card

Helps determine exposure, adjust lighting ratio, and check lighting distribution. Gray side, 18% reflectance; white side, 90% reflectance. Envelope contains two 8 x 10" cards and a 4 x 5" card.

Kodak R-27 Gray Card with instructions in English #KOGC.....\$14.95

Kodak R-27 Gray Card w/instructions in English, Spanish, French & German #KOGCQ.....\$14.95



Kodak Color Separation Guide and Gray Scale

Available with a small 8.5" (Q-13) or large 14" (Q-14) gray scale and color control patches, these cards are for copy work, side-by-side comparisons of films, enlarging papers and color reproduction processes that require the use of masks, separation films and filters. Useful for photographers utilizing the Zone system.

The gray scale is a strip of 20 stepped, neutral values and an 18% gray background that will help compare tone values of the original with the reproduced image. The color control patches are for photos that are used in offset printing. Contains standard separation colors used in RGB and CMYK processes, that helps match the color in the reproduction to the original.

Small (Q-13) #KOCSCS\$18.50 **Large (Q-14) #KOCGL**\$23.50

QP Calibration Card 101 (Pack of 15 Cards)

A small, lightweight and inexpensive way to calibrate your contrast. A pad of 15 QP cards comes in a protective resealable foil bag that easily fits into a camera case or pocket. The cards have an adhesive back. The grey surface is completely neutral and reflects 18% light. A white and black patch can be used for contrast adjustment. In addition, the card can be used as a dimensional reference.

QP Calibration Card 101 (Pack of 15 Cards) #QPC101\$19.95

GENERAL ACCESSORIES

DUST REMOVERS

DUST REMOVING BRUSHES

Delta Camel Hair Brush

The photo standard for 50 years, the Delta Camel Hair Brush is perfect for cleaning your optics, lenses and other photographic equipment. It's safe, ultra soft, and it will last for years.

1" Camel Hair Brush (DEBCH1)11.95 2" Camel Hair Brush (DEBCH2)13.95

Kinetronics StaticWisk Lens Brushes

The Kinetronics StaticWisk is a fine quality anti-static lens brush. It is made from a special blend of soft, natural hair and a conductive fiber. To use the brush, simply "sweep" the lens. The brush has a resistivity of 10-1 and will dissipate any static charge and "release" the dust. Their natural hair and conductive fibers are assembled with stainless steel wire, and may be washed in shampoo and water to clean or vacuumed to remove dust. Brushes are available in 3/4" to 4" widths.

Mini StaticWisk (KIMW) 3/4" wide.....6.95 30 StaticWisk (KIB1) 1.25" wide12.99
60 StaticWisk (KIB2.5) 2-1/2" wide19.95 100N StaticWisk (KIB4) 4" wide21.95



Kinetronics 100N



Kinetronics 30



Kinetronics Mini

LENS PENS



Bushnell Lens Cleaning Pen



Hakuba MiniPro LensPen



Hakuba LensPen

Bushnell Lens Cleaning Pen (BUAK)

A 2-in-1 lens cleaning system featuring a high-quality, soft, retractable lens brush and self-replenishing flexible tip that won't scratch or damage lenses. The remarkable cleaning compound removes fingerprints, smudges and grease marks without spilling and it won't dry out. Safe for all lenses, including multi-coated surfaces. Use with camera lenses, binoculars, camcorders, etc. Environmentally friendly, non-toxic.

Includes a neoprene strap, lens cleaner and cleaning cloth10.95

Hakuba LensPen

Winner of PTN's product of the year award for five years in a row, there is simply no cleaning tool as effective and easy to use for cleaning camera lenses, binoculars, scopes and other optical equipment. The LensPen's unique cleaning technology outperforms the most advanced microfiber cloths by getting into the nooks and crannies, leaving a sparkling shine over 100% of the lens surface.

LensPen #HAPLC9.95 MiniPRO #HAPLCMPQ.....9.95

BLOWER BRUSHES

Rubber Blower Brushes

Rubber bulb type with protective sleeve. Helps clean lint and dirt from negatives and camera parts without scratching or smudging.

Small #GBBBS3.50 Medium #GBBBM.....3.95 Large #GBBBL4.95

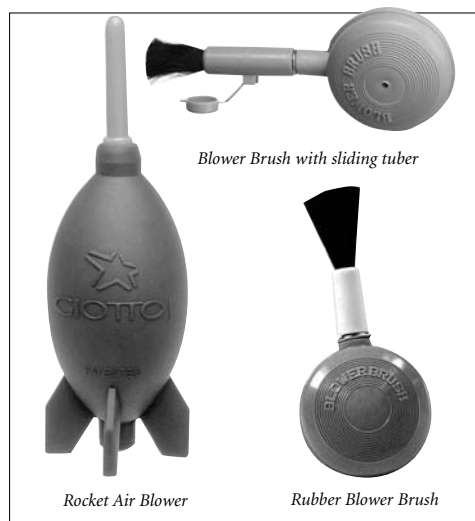
Medium Size Rubber Blower Brush (GBBB)

With sliding tube and protective cap to cover brush when not in use.....5.95

Giottos Rocket Air Blowers

Made from a silica gel, they are very powerful and refill quickly. They are made of a non-toxic, environmentally friendly material, resistant to both high and low temperatures, tear-proof. It has an air valve to prevent it from breathing in dust and blows out a powerful stream of air to blow dust away, to make cleaning lenses, cameras, filters a breeze. Unique rocket-shaped design allows the blower to stand upright, and its removable nozzle can be removed and stowed. Includes a neck strap.

Rocket Air Blaster 6.6" long (GIBAS)8.95 Rocket Air Blaster 7.5" long (GIBA).....9.95



Rocket Air Blower

Rubber Blower Brush



For Any Inquiries Regarding Your Order, Call Our Customer Service:
(800) 221-5743 • (212) 239-7765 • FAX: (800) 947-2215 • (212) 239-7549

GENERAL ACCESSORIES

CLEANING CLOTHS

BLOWERS & BLOWER BRUSHES

Hakuba Blowers & Blower Brushes

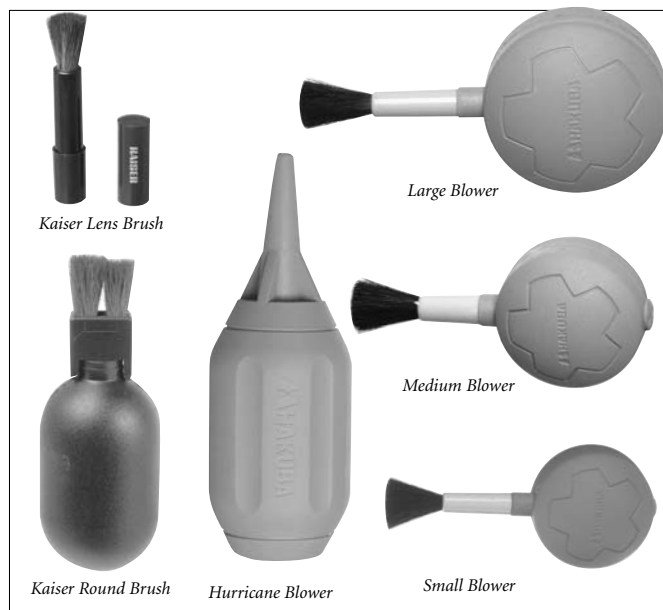
Made from natural rubber for easy handling and pinpoint accuracy, these blowers and blow brushes remove lint and dust from hard to reach places. Essential for cameras and optics, they are also ideal for maintaining computer, audio and other electronic equipment.

Hurricane Blower (5¼ x 2") #HABHQ.....	5.95
Super Blower Medium (5½ x 2") #HABSM	6.50
Super Blower Large (6 x 2½") #HABSL	8.50
Brush Deluxe Small (3¼ x 1¼ x 1¼") #HABBS	4.95
Blower Brush Deluxe Medium (4¼ x 2¼ x 1-½") #HABBM	5.50
Blower Brush Deluxe Large (5¼ x 2½ x 1¼") #HABBL	6.50

Kaiser Blower Brushes

Blower brushes take up little space, and are the all-purpose and gentle method for removing loosely deposited dust and fluff.

Flat Brush with large rubber blower bulb (KABBF)	9.95
Round Brush with large rubber blower bulb (KABBR)	9.95
Lens Brush in plastic tube with lipstick twist mechanism (KABLS)	9.95



GENERAL ACCESSORIES

637

CLEANING CLOTHS

Clearsight Micro-Fiber Lens Cleaning Cloth (CLLC)

Made of 20% polyamide and 80% polyester, this cleaning cloth is thin, with the look and feel of non-lip suede to assure a firm grip and good cleaning control. They are also totally lintless. Washable, the cloth measures a generous 8 x 8".

Leland PowerClean Cloths

Super soft synthetic micro fiber cloth, the environmentally responsible PowerClean cloths replace disposable paper wipes which are often chemically saturated. Micro fiber technology is superior to natural fibers due to its design. When made into a cloth, it can absorb twice its weight in water, does not require oil to stay soft and doesn't shrink after laundering. Contamination, dirt, and even finger oil, is safely and effectively wiped clean from a variety of coated and non-coated optical surfaces, including CD's, lasers, lenses, and even eyeglasses.

6.5 x 6.5" MiniCloth #LEMC.....	4.95
11 x 12" UltraCloth #LEUC	7.95

Spudz Micro Fiber Cleaning Cloth

a small micro fiber cleaning cloth that is perfect for photographers, birders, and any one who needs to clean their optics in the field, it has a convenient pouch and hook design that allows you to attach, and keep the cloth where you want. Available in four colors: Black, Blue, Cameo, and Rainbow.

Micro Fiber Cloth-Black #SPSPB.....	4.95
Micro Fiber Cloth-Blue #SPSPBL.....	4.95
Micro Fiber Cloth-Cameo #SPSPC4.95	
Micro Fiber Cloth-Rainbow #SPSPRB ..4.95	

Hakuba SuperKnit

Hakuba's SuperKnit is a microfiber cloth designed to remove not only dust and lint but also difficult to clean smudges and oil based spots. Uses no chemicals and will not scratch or mark polished surfaces. Washable and reusable, it offers superior cleaning power for the care of digital, and traditional cameras and lenses.

Small (6.3 x 7.8") #HACCS4.95	
Medium (9.5 x 11.8") #HACCSM	7.95



ORDER & INFO. (212) 502-6340 • FAX: (212) 239-7770 (800) 947-7008
1-800-290-6750 • www.bhphotovideo.com



GENERAL ACCESSORIES

CLEANING TOOLS

CLOTHS & WIPES



Premier Photo Wipes

Hakuba UltraKnit

Dust-Off Microfiber Cleaning Cloth

Kodak Lens Cleaning Paper

Hakuba UltraKnit Polishing/Cleaning Cloth

Hakuba's UltraKnit polishing and cleaning cloth offers superior cleaning power for the care of digital, and traditional cameras and lenses. It is also perfect for cleaning all types of CDs, TV screens, computer monitors, jewelry, crystal and most other polished surfaces. Washable and reusable.

Small (7.5" x 7.5") #HACCUS.....9.50
Medium (11.8" x 11.8") #HACCUM13.50

Falcon Dust-Off Luminex Cleaning Cloth (FALC)

Falcon's Luminex cleaning cloth (7½ x 7½") is the high-tech way to clean any type lens or filter. More effective than lens tissue or any other cleaning cloth due to its 220,000 microfibers per square inch, it easily lifts away dirt, grease and dust. 100% lint-free, they are washable and reusable5.95

Premier Photo Wipes (PRPW)

Lint free, non-abrasive, super soft, super strong, both wet or dry, and highly absorbent professional 13" x 17" photo wipes. Photo wipes offer countless uses that save time, money, equipment. They can clean lenses, glass negative carriers, and scanners, without fear of scratching.
Each box contains 50 wipes4.95

Kodak Lens Cleaning Paper (KOLT)

Soft, absorbent paper that is safe for use on the finest lenses, Kodak's lens cleaning paper is lint-free and chemically pure.
Contains 50 3 x 5" sheets1.95

FALCON DUST-OFF

Falcon Dust-Off delivers the most comprehensive line of dust-removing and preventive maintenance cleaning products for your electronics and other household items. Dust-Off products are not flammable and completely safe for normal use, but they do contain some flammable elements. They are also 100% ozone-safe.



Dust-Off Valve Trigger

Dust-Off Jumbo

Dust-Off 10 oz Refill

Dust-Off Plus 360° Trigger

Dust-Off Plus 10 oz Refill

Dust-Off Plus Kit (FADOPKQ)

The innovative Vector Valve rotates 360° with a 180° vertical orientation. Provides amazing range and versatility. One-of-a-kind nozzle allows you to keep duster upright while delivering a cleaning blast to difficult-to-reach areas. 100% ozone safe. Dust-off Plus is a nozzle plus replacement canister system. When canister is empty just save the nozzle and replace the canister.

Includes 10oz. refill can26.95

Dust-Off Plus 10 oz. refill #FARDOP87.09

360° Vector Valve (Repl.) #FAVDOP19.95

Dust-Off Classic

with Chrome Valve (FADOK)

The one that started it all more than 20 years ago. A true classic. Provides more pressure per blast than disposable dusters. Chrome valve provides years of dependable use. Designed for the consummate professional. 100% ozone safe.

Optional refills are available.22.95

10 oz. Chrome-Valve Classic Refill #FARDO ...6.99

Chrome Valve (Replacement) #FAVDO19.50

Dust-Off Jumbo (17 oz.) (FADOJQ)

The newest and most economical duster delivers more cleaning power per can. Designed for larger cleaning applications and frequent users. Plenty of value per ounce. Same efficient blasting power as other disposable products. 100% ozone safe7.95

Dust-Off Mini (1.75 oz.) (FADOM)

The small can that packs a powerful punch. Designed to travel. Handy, palm-sized duster conveniently fits in laptop or camera bags. 100% ozone safe2.95

Dust-Off JR (3.5 oz.) (FADOJ)

Compact. Disposable. Indispensable for places where space is tight. The flexible plastic tube can be set in any direction to make hard to reach spots easy to reach. Perfect for computer labs, camera bags, tool kits, desktops, and darkrooms. Same efficient blasting power as larger models. 100% ozone safe3.95

Dust-Off X-Large (10 oz.) (FADOD)

Falcon's most commonly-used duster, the Dust-Off X-Large provides superb blasting power. Larger-size disposable can gives you a great value. Ideal for workstations, labs, repair benches, household use, on-location photography, etc. Provides potent dust-removing power for practically any task. 100% ozone safe7.50



For Any Inquiries Regarding Your Order, Call Our Customer Service:
(800) 221-5743 • (212) 239-7765 • FAX: (800) 947-2215 • (212) 239-7549

GENERAL ACCESSORIES

CLEANING TOOLS

BESELER DUST-OFF

Beseler canned air is an economical general purpose air for cleaning equipment, optics, negatives, and any other hard to reach spots where dust may accrue. Beseler's dust guns provide dry, ultra-filtered air to remove even microscopic dust and lint from your negatives, slides and photo or electronic equipment. 100% ozone-safe, non-flammable and contains no ether! More environmentally safe than ever before—meets all federal regulations regarding duster products.



Dust Gun 100 Disposable 2.5 oz. Can (BEDG1002.5): With built-in continuously-variable trigger valve and extension nozzle. The perfect size for you camera bag, when you're out in the field.....**4.24**

Dust Gun 100 Disposable 8 oz. Can (BEDG1008): With built-in trigger valve and extension nozzle**6.24**

Dust Gun 100 8 oz. Refill Can (BERDG1008): Requires universal chrome trigger valve...**5.75**

Dust Gun 100 Disposable 12 oz. Can (BEDG10012): With built-in continuously-variable trigger valve and extension nozzle.....**7.95**

Dust Gun 100 12 oz. Refill Can (BERDG10012): Requires chrome trigger valve.....**7.24**

Dust Gun 100 Refill Cans (BERDG100812): 12 Pack - 8 oz.....**62.50**

Duster 12 oz. Disposable (BED12): With built-in air-directing nozzle.....**6.25**

Duster 8 oz. Disposable (BED8): With built-in air-directing nozzle**4.95**

Super DustGun 100 Disposable 12 oz. Can (BEDSG10012): With a built-in high powered, continuously-variable trigger valve and an extension nozzle**8.24**

Universal Chrome Trigger Valve (BETV): For Dust Gun 100 Refills.....**19.95**

Hama Self-Timer 1 (HAST): 10 second timer. Plunger travel is adjustable to between 0.12" and 0.315". With stop button. Supplied in a case.....**43.50**

Hama Film-Safe X (HAFSX): Protection for up to four rolls of 35mm film. Hard shell case protects film against x-rays up to ISO 3200 as well as dust, splashing water and sun**12.95**

LENS CLEANING KITS

Giottos Lens Cleaning Kit (GILCS)

One of the best ways to care for your lenses and equipment, this kit includes a retractable soft brush, pack of 10 pointed tip cotton swaps, micro-fiber cleaning cloth and bottle of lens cleaner..**8.95**



Giottos Lens Cleaning Kit with Small Rocket Blaster (GILCK)

One of the best ways to care for your lenses and equipment, this kit includes Giottos' small Rocket Air Blaster, retractable soft brush, pack of 10 pointed tip cotton swaps, micro-fiber cleaning cloth and bottle of lens cleaner**16.95**



Hakuba Lens Cleaning Kit (HALCK)

The Hakuba Lens Cleaning Kit comes complete with 30 sheets of lint free lens cleaning paper, along with 30cc of optical safe lens cleaning liquid**3.95**



Hakuba Lens Cleaning Set (HALCS)

The Hakuba Lens Cleaning Set comes complete with 30 sheets of lint free lens cleaning paper, along with 30cc of optical safe lens cleaning liquid, a bulb type blower Brush, and a soft cleaning cloth.....**4.50**



GENERAL ACCESSORIES

CLEANING PRODUCTS

GENERAL ACCESSORIES

640

LENS CLEANING KITS



Kinetronics Optics First Aid Kit (KIOFAK)

Like an insurance policy for quality images, the Kinetronics Optics First Aid Kit is a must have whether you're on safari, on tour, or in the field. Ideal for cameras, camcorders, binoculars, scopes, rangefinders and instruments, the kit includes Precision Cleaning Solution for lenses and viewfinders, Tiger Cloth Anti-Static Microfiber Cleaning Cloth, StaticWisk SW-020 Anti-Static Lens Brush and SpeckGRABBER for removing specks from lenses.....19.95

Zeiss Lens Cleaning Kit (ZELCK)

Includes 2 strips of pre-moistened cloths, 1oz. spray cleaner, a microfiber lens cloth, lens care card and durable carrying bag24.95



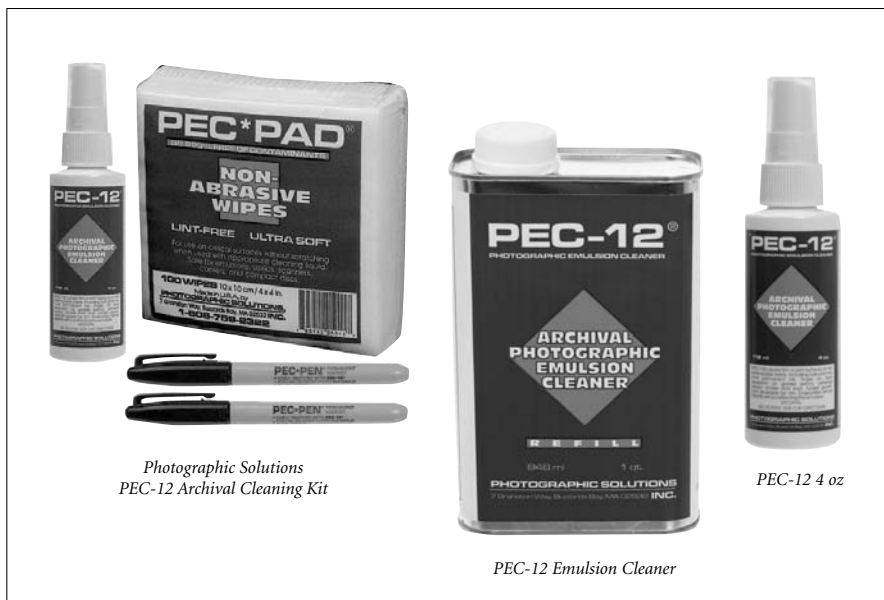
Zeiss Pre Moistened Lens Cloths

(ZECT)

The ultimate in convenience, these pre-moistened, non-abrasive lens cloths safely and quickly clean any lens. High-tech ammonia-free formula cleans effectively without leaving streaks or residue. Clean smudged and dirty lenses at your convenience with these handy individual packets. Pack of 206.95



LENS CLEANING SOLUTIONS



Photographic Solutions
PEC-12 Archival Cleaning Kit

PEC-12 Emulsion Cleaner

PEC-12 4 oz

Photographic Solutions Eclipse Lens Cleaning Kit (PHEOCS)

Eclipse lens cleaner is the highest purity lens cleaner available. It dries as quickly as it can be applied leaving absolutely no residue. When used with the 4 x 4" PECPAD photo wipes it is possible to clean only the portion of lens which is dirty eliminating "hazy swirls". Includes 2 oz. bottle of Eclipse Lens Cleaner with dropper applicator and 10 photo wipes7.50

Photographic Solutions PEC-12 Photo Emulsion Cleaner

PEC-12 is a non-water based film and print cleaner which removes virtually all non-water based stains from color and black & white slides, negatives, and prints. It removes grease pencil, adhesive residue, finger oils, ball-point pen, fungus, smoke and soot damage, laser separation oil and most permanent inks. Pump-spray bottle with no water, PEC-12 dries instantly with no emulsion swelling and leaves no residue

PEC-12 Photo Emulsion Cleaner
4 oz. bottle #PHP124.....9.95

PEC-12 Photo Emulsion Cleaner
32 oz. bottle #PHRP12Q.....46.95

Photographic Solutions PEC-12 Archival Cleaning Kit (PHP12K)

A great tool for any studio, darkroom, film crew, photographer, or anyone who needs to be organized. The kit consists of the famous PEC-12 emulsion cleaner, Pec Pads, and two Pec Pens that washes off easily using the Pec cleaner and pads.....16.95

ROR Residual Oil Remover (ROROR20)

Residual Oil Remover is a lens cleaner that aims specifically to remove micro-carbon residue which is present on the surface of a lens. Although invisible to the naked eye, when removed from the lens it provides a remarkable change and a significant light entry increase (up to 3/4 of an f-stop, in most cases). 2 oz spray bottle....6.95



For Any Inquiries Regarding Your Order, Call Our Customer Service:
(800) 221-5743 • (212) 239-7765 • FAX: (800) 947-2215 • (212) 239-7549

GENERAL ACCESSORIES

STAMP KITS/PADS/BATTERY TESTERS

RUBBER STAMP KITS

Rexton

Rubber Stamp Kit for "Proof" (RERSPK)

Convenient assembly includes everything needed to make fast drying non-smudging rubber stamp images on valuable photographic work. Allows the photographer to place a message on proof prints to help prevent unauthorized copying. Refill quantities are available.



Kit contains:

- 4-oz. each of Rexton Pro-Black Series-3 Ink and Rextonol Solvent/Remover/Rejuvenator
- 1 'PROOF' rubber stamp
- 1-uninked premium-grade felt 2.75 x 4.25" stamp pad

Rubber Stamp Kit for "Preview" (RERSPKQ)



Kit contains

- 4-oz. each of Rexton Pro-Black Series-3 Ink and Rextonol Solvent/Remover/Rejuvenator
- 1 'PREVIEW' rubber stamp
- 1-uninked premium-grade felt 2.75 x 4.25" stamp pad

Rubber Stamp Kit "Do Not Copy" (RERSDNCK)

Kit contains

Includes: 4 oz. ea. Rexton Pro-Black Series-3 Ink and Rextonol Solvent/Remover/Rejuvenator, 1 Proof or Preview rubber stamp, 1 un-inked felt #1 size stamp pad, 2 zipper lock pad storage bags and complete instructions.



ALL WEATHER WRITING

Rite in The Rain

All-Weather Photo Journal (RIAWPJ)

This 3x5" pocket sized notebook (50 sheets) enables photographers, tourists and writers to keep track of their info and shots in bad climates with a specialized page pattern. Ideal for birders, sports photographers, photojournalists and anyone else who needs to keep lists or take notes outside. Works with most pens4.95



All-Weather Pen-Black (RIAWSP)

Permanent black ink. Writes underwater and/or upside down. Use with the All-Weather Photo Journal7.95

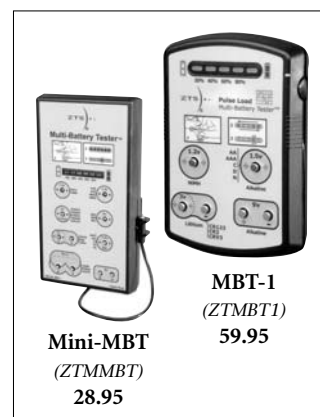
All-Weather Birder's Field Notebook (RIAWBFN)

Designed to keep up with enthusiasts, from the backyard watcher to the active birder, this 4 1/2 x 7" book has durable side spiral binding and polyethylene cover. Inside, it has helpful reference guides and plenty of space for sketching and field notes.....6.95



ZTS Battery Testers

ZTS microprocessor-controlled instruments are the most accurate and versatile battery testers you can own. They compute battery's remaining power capacity using an automatic, high accuracy pulse load test. After the timed test cycle, percentage of remaining battery capacity is clearly indicated on the LED bar display. Battery types clearly labeled next to appropriate contacts. Test many popular batteries including NiMH, lithium, alkaline, coin type and more. Know exactly how much life is left. Test and replace batteries before they let you down.



Mini-MBT
(ZTMMBT)
28.95

MBT-1
(ZTMBT1)
59.95

Mini-MBT Multi Battery Tester:

- 1.2V NiMH • Nicad rechargeable (AAA, AA, C, D)
- 1.5v alkaline (AAA, AA, C, D, N)
- 3v photo lithium (CR123, CR2, CRV3) • 9v alkaline, zinc-carbon

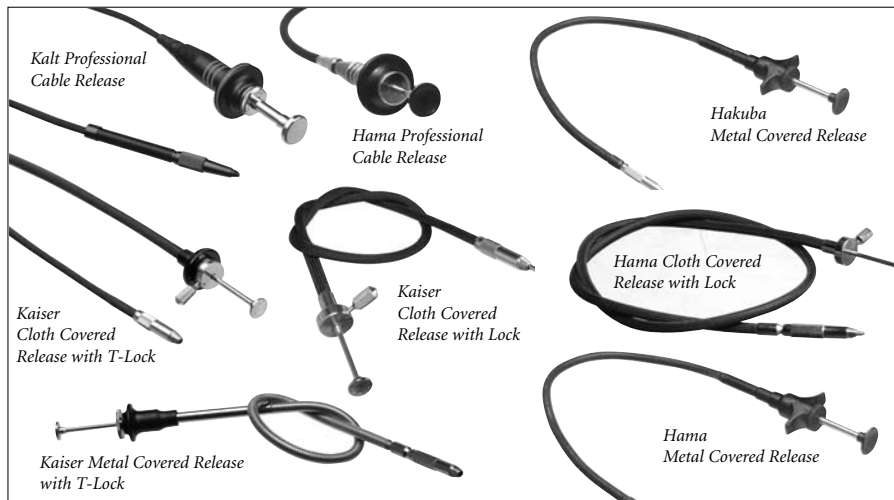
MBT-1 Multi Battery Tester: Same as above, plus:

- 1.5v '76' series button (S76, A76, A625, A640)
- 3v Lithium Ion (CR2016, CR2025, CR2032, 58L, 1/3N)
- 6v '28' series (28A, S28, 28L) • 6v photo lithium (2CR5, CR223, CR-P2)

GENERAL ACCESSORIES

CABLE RELEASES

MECHANICAL CABLE RELEASES



Hakuba Cable Releases

Hakuba 12" Metal Covered Cable Release with Lock #HACRM30.....	13.95
Hakuba 20" Metal Covered Cable Release with Lock #HACRM50.....	16.95
Hakuba 40" Metal Covered Cable Release with Lock #HACRM100.....	19.95

Hama Cable Releases

Hama Cloth Covered Cable Release with Lock - 6" #HACRC6.....	13.50
Hama Cloth Covered Cable Release with Lock - 10" #HACRC10.....	13.95
Hama Cloth Covered Cable Release with Lock - 20" #HACRC20.....	18.95
Hama Cloth Covered Professional Cable Release with Lock - 20" #HACRP20.....	47.50
Hama Deluxe Cable Release - 20" #HACR20.....	29.95
Hama Heavy Duty Cable Release with Center Lock - 10" #HACRHD10.....	24.95
Hama Heavy Duty Cable Release with Center Lock - 30" #HACRHD30.....	29.95
Hama Metal Covered Cable Release with Auto Lock - 10" #HACRSS10.....	18.95
Hama Metal Covered Cable Release with Auto Lock - 10" #HACRSS20.....	18.95

Kaiser Cable Releases

Kaiser Cloth Covered Cable Release with Disk Lock - 10" #KACRCDL9.....	16.50
Kaiser Cloth Covered Cable Release with Disk Lock - 20" #KACRCDL19.....	19.95
Kaiser Cloth Covered Cable Release with T-Lock - 6" #KACRCTL6.....	12.50
Kaiser Cloth Covered Cable Release with T-Lock - 10" #KACRCTL9.....	9.95
Kaiser Cloth Covered Cable Release with T-Lock - 20" #KACRCTL19.....	14.95
Kaiser Metal Covered Cable Release with Disc Lock - 20" #KACRSSDL19.....	24.95
Kaiser Metal Covered Cable Release with T-Lock - 10" #KACRSSTL9.....	19.95
Kaiser Metal Covered Cable Release with T-Lock - 20" #KACRSSTL19.....	24.95
Kaiser Professional Cable Release with Lock - 20" #KACR20.....	38.95
Kaiser Vinyl Covered Cable Release with Disk Lock - 20" #KACRPVCDL19.....	24.50
Kaiser Vinyl Covered Cable Release with T-Lock - 20" #KACRPVCTL19.....	29.50

Kalt Professional Cable Releases

Kalt Professional Cable Release - 20" #KACRP20.....	29.95
Kalt Professional Cable Release - 40" #KACRP40.....	36.50

AIR RELEASES



Degroff Products: 5' air-hose with 90° connection to shutter socket #DEDG1400.....**79.95**

Degroff Products: 5' air-hose, with 10" flexible metal cable that connects to the shutter. #DEDG1600.....**79.95**



Kaiser Air (Bulb) Release -

Extra long bulb release that fits any camera that accepts standard mechanical cable release. Complete with reeling drum from which the tubing can be quickly unwound to the required length.

16.5' Air (Bulb) Release #KAAR16.5.....	43.50
30' Air (Bulb) Release #KAAR33.....	47.95

Kaiser Strap-On Cable Release Adapter for SLR & Point-n-Shoot Cameras

Adjustable strap ties around the camera body and is positioned over the shutter release button. A standard cable release cable connected to the adapter will then apply pressure to the shutter button and trigger the camera.

#KACRASO.....	35.95
---------------	-------

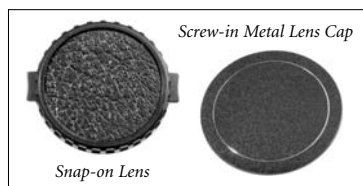


GENERAL ACCESSORIES

BODY CAPS/LENS CAPS/TOOLS

Snap-on Lens Caps

For 30mm (GBLC30).....	3.50
For 37mm (GBLC37).....	3.50
For 43mm (GBLC43).....	3.50
For 43.5mm (GBLC43.5)	4.95
For 46mm (GBLC46).....	4.95
For 48mm (GBLC48).....	4.95
For 49mm (GBLC49).....	4.95
For 52mm (GBLC52).....	4.95
For 55mm (GBLC55).....	4.95
For 58mm (GBLC58).....	4.95
For 62mm (GBLC62).....	5.95
For 67mm (GBLC67).....	5.95
For 72mm (GBLC72).....	5.95
For 77mm (GBLC77).....	5.95
For 82mm (GBLC82).....	11.95



Screw-in Metal Lens Caps

For 24mm (GBLCM24).....	7.95
For 25.5mm (GBLCM25.5)	7.95
For 30.5mm (GBLCM30.5)	7.95
For 35.5mm (GBLCM35.5)	7.95
For 37.5mm (GBLCM37.5)	7.95
For 39mm (GBLCM39).....	7.95
For 40.5mm (GBLCM40.5)	7.95
For 43mm (GBLCM43).....	7.95
For 43.5mm (GBLCM43.5)	7.95
For 46mm (GBLCM46).....	7.95
For 48mm (GBLCM48).....	7.95
For 49mm (GBLCM49).....	7.95
For 52mm (GBLCM52).....	7.95
For 55mm (GBLCM55).....	7.95
For 58mm (GBLCM58).....	9.95
For 58mm (GBLCM58).....	9.95
For 62mm (GBLCM62).....	9.95
For 67mm (GBLCM67).....	9.95
For 72mm (GBLCM72).....	9.95
For 77mm (GBLCM77).....	9.95

Plastic Body Caps

For Canon FD (GBBCC)	3.95	For Minolta Maxxum (GBBCMMAF).....	5.95
For Canon EOS (GBBCCAF)	5.95	For Nikon (GBBCN)	3.95
For Contax (GBBCCY).....	3.95	For Olympus (GBBCO).....	3.95
For Konica (GBBCKQ).....	3.95	For Pentax-K (GBBCP)	3.95
For Minolta (GBBCM).....	3.95	For Pentax-Univ (GBBCU).....	3.95

Metal Body Caps

For Canon FD (GBBCCM).....	11.95	For Minolta Maxxum (GBBCMMAF)	9.95
For Konica (GBBCKM).....	7.95	For Pentax-Univ (GBBCMPU).....	6.95
For Minolta MD (GBBCMMD).....	7.95		

Rear Lens Caps

For Canon FD Lenses (GBLCRC)	3.95	For Olympus Lenses (GBLCRO)	3.95
For Canon EOS Lenses (GBLCRCF)	5.95	For Pentax Lenses (GBLCRP).....	3.95
For Minolta MD Lenses (GBLCRM).....	3.95	For Pentax Universal Lenses (GBLCRPU).....	3.95
For Maxxum Lenses (GBLCRMAF)	5.95	For Yashica/Contax Lenses (GBLCRCY)	3.95
For Nikon Lenses (GBLCRN)	3.95	For Konica Lenses (GBLCRK)	3.95

Leatherman Tools

From modest beginnings, the popularity of Leatherman tools has grown rapidly. Now, millions of consumers all over the world become Leatherman owners each year, and the LEATHERMAN brand is recognized as the leader in sales, quality and innovations within the compact multipurpose tool category. Close inspection reveals the quality and attention to detail that make their products more useful and effective. Using the best stainless steel, ingenious design and rigorous tolerances, they are backed with a 25-year guarantee. A genuine Leatherman tool is always ready when you need it. And you will need it.



Charge Ti - Titanium (LECTLC)	109.95	Micra (LEMY)	19.95
Charge XT - Titanium (LECXL).....	109.95	Pocket Survival (LEPST).....	39.95
Crunch (LEC)	68.50	Pulse (LEP)	57.95
Fuse - Stainless Finish (LEFLC).....	39.95	Squirt P4 Plier - Glacier (Blue) (LESP4BL)	27.50
Juice C2 - Inferno (Fiery Red) (LEJC2)	41.95	Squirt P4 Plier - Inferno (Red) (LESP4R)	27.50
Juice CS4 - Glacial (Ice Blue) (LEJCS4)	52.95	Squirt P4 Plier - Storm (Gray) (LESP4G)	27.50
Juice KF4 - Gray (LEJKF4G).....	52.95	Squirt S4 Plier - Glacier (Blue) (LESS4BL).....	27.50
Juice KF4 - Solar (Yellow) (LEJKF4)	52.95	Squirt S4 Plier - Inferno (Red) (LESS4R).....	27.50
Juice S2 - Flame (Burnt Orange) (LEJS2).....	41.95	Squirt S4 Plier - Storm (Gray) (LESS4G)	27.50
Juice XE6 - Gray (LEJXE6G)	64.95	Super Tool 200 (LEST200).....	59.95
Juice XE6 - Thunder (Purple) (LEJXE6)	64.95	Super Tool 200 with Adapter (LESTWTA)	74.95
Kick - Stainless Finish (LEKLC)	29.95	Wave Tool - Stainless Finish (LEWLC).....	73.95