



The A/V Presentation

SourceBook

Section 2a

Projector Accessories

Projector Cables.....	183
Projector Cases	184-185
Replacement Lamps	186-189
Remote Controls.....	190-191
Projector Lenses.....	192-191
Wireless Streamers	194-199

Obtaining information and ordering from B&H is quick and easy. When you call us, just punch in the corresponding Quick Dial number anytime during our welcome message. The Quick Dial code then directs you to the specific professional sales associates in our order department.



For Section 2a, Projector Accessories,
use Quick Dial #: 821

XHD SERIES

Ultra High Resolution Projector Cables

The XHD (eXtreme High Definition) series provides the sharpest, clearest pictures with bright, true lifelike colors and the most accurate image representation available. XHD cables are the cable of choice for digital signage, HDTV applications, plasma, LCD, and DLP displays, digital satellite and cable receivers, DVR's, streaming video, and much more. XHD cables utilize double shielding (triple on the digital cables) which provides the ultimate protection against RF and electromagnetic interference, and OFC (Oxygen Free Copper) stranded center conductors for maximum signal transfer and no discernable loss. 24k gold contacts provide premium connectivity while molded strain relief and Comprehensive's legendary X-Traflex jacket provide unsurpassed flexibility and durability. All XHD series cables include a lifetime warranty.

XHD HDMI Cables

HDMI cables are the first industry-supported, uncompressed, all-digital audio/video interface and Comprehensive's XHD HDMI cables provide all-digital signal transfer and the ultimate high resolution interface between any high definition audio/video source and display. XHD HDMI cables support standard, enhanced, or high-definition video such as 720p, 1080i and 1080p as well as 8 channel digital audio with bandwidth to spare on a single cable. And while standard HDMI cables can only go up to 15', these cables utilize 24 gauge OFC center conductor construction to ensure extremely low attenuation and maximum signal transfer up to 50'.



3' Cable (X3VHDMI3)	52.95	6' Cable (X3VHDMI6)	61.95
10' Cable (X3VHDMI10)	69.95	15' Cable (X3VHDMI15)	83.95
25' Cable (X3VHDMI25)	123.95	50' Cable (X3VHDMI50)	184.95

XHD DVI Cables



Designed for today's technology, XHD DVI cables provide uncompressed all-digital video for the ultimate in HDTV and High Definition performance. To truly get the most out of your system, you must utilize all digital signal

transmission. All digital transmission means you see the same quality picture reproduction as if you were watching the source "master tape" itself. All digital transmission utilizing XHD DVI cables means you never miss a thing. And while standard DVI cables can only go up to 15', XHD DVI cables utilize 24 gauge OFC center conductor construction to ensure extremely low attenuation and maximum signal transfer up to 50'. 24k precision machined contacts provide maximum conductivity. Triple shielding provides maximum rejection of all interference including EM and RF. Molded strain relief and X-traflex jacket provide for unsurpassed flexibility and durability.

3' Cable (X3VHDMIDV13)	52.95	6' Cable (X3VHDMIDV16)	61.95
10' Cable (X3VHDMIDV110)	69.95	15' Cable (X3VHDMIDV115)	83.95
25' Cable (X3VHDMIDV125)	123.95	50' Cable (X3VHDMIDV150)	184.95

XHD Component Cables

Comprehensive's XHD component video cables provide the sharpest, clearest pictures with bright, true lifelike colors and the most accurate image representation available. They utilize double shielding of 95% copper braid (not 80 or 85% like competitors) and 100% foil which provides ultimate protection against RF and electromagnetic interference. A 100% OFC stranded center conductor allows for maximum signal transfer and no discernable loss. 24k gold contacts provide premium connectivity while the legendary X-Traflex jacket reduces cable stress for unsurpassed durability.



3' XHD Component Video Cable (X3V3RCA3)	23.95
6' XHD Component Video Cable (X3V3RCA6)	39.95
12' XHD Component Video Cable (X3V3RCA12)	54.95
25' XHD Component Video Cable (X3V3RCA25)	74.95
50' XHD Component Video Cable (X3V3RCA50)	139.95

XHD VGA/UXGA Cables



Providing true XHD eXtreme High Definition performance, Comprehensive XHD VGA/UXGA cables utilize an OFC (oxygen-free copper) center conductor construction to ensure extremely low attenuation and maximum

signal transfer-even over long distances. Heavy duty HD15 connectors with 24k gold precision machined contacts provide maximum conductivity and reduce distortion caused by inferior connectors. Multiple individual high resolution shielded coax cables transmit video signals so bright and vibrant, images truly come to life on today's high definition plasma and LCD monitors. The cables are triple shielded to provide maximum rejection of all interference including EM and RF. Exclusive X-traflex jacket provides for unsurpassed flexibility and durability and easy installations.

3' Cable (X3VUXGA3)	Call	6' Cable (X3VUXGA6)	Call
12' Cable (X3VUXGA12)	Call	25' Cable (X3VUXGA25)	Call
50' Cable (X3VUXGA50)	Call	100' Cable (X3VUXGA100)	Call

PROJECTOR CASES

ATA-300 Style Cases

JELCO's NSATA (Non-Stock ATA) ATA-300 Style projector shipping case are designed to send projectors and accessories as checked luggage or via FedEx/UPS. These custom-made, rugged shipping cases are constructed of high impact grey ABS plastic laminated over a plywood frame. They have steel corners, aluminum trim, inter-locking valence, and stainless steel rivets that combine to produce an ultra-strong case that will give years of service. Inside, each case is fully lined with 1.5 to 2" of foam specifically designed for the equipment.

A large accessory compartment holds cords, cables, remote, etc. They feature a sturdy, ultra-convenient tilt wheel and extension handle assembly. The dual-action assembly locks in the extended position when in use, and locks in the closed position to avoid being damaged during transit. Tilt wheels make the cases really mobile. Neoprene tread and ball bearings make them extremely durable and sealed wheel housing is corner mounted for best stability and easy replacement with a screwdriver. To provide security against unauthorized entry, they contain either a combination lock or a key lock. The smallest ATA cases are equipped with a SlimLock. This unique design permits a combination lock on the ultra-portable projector cases without sacrificing the convenience of a center-mounted carrying handle.



Padded Hard Side Travel Cases

Jelco's padded hard side travel cases are designed as carry-on luggage (most fit in an airplane's overhead rack). Manufactured of black Dupont Original Ballistic nylon fabric for durability and moisture resistance, their interior includes the added shock protection of an ABS plastic insert sandwiched between two layers of foam and fabric. All cases feature heavy-duty, smooth sliding YKK zippers. They include a non-slip handle (extends from 36" to 43") and ball-bearing "skate" wheels for travel convenience. Extension platform pulls out for stability and extra items that may need to be carried.

Some models have a removable, laptop computer case. These "RP" style padded hard side travel cases feature a removable laptop computer case to use your computer at your seat on a plane, or for trips when you don't need a laptop computer. It actually gives you two-cases in one.

Jelco cases are available for hundreds of projectors. Go to the B&H website to see complete listings.

Platinum Series Molded Travel Case

A wheeled projector case designed to meet domestic carry-on regulations, the Platinum Series is a durable ABS plastic case that protects a projector and laptop whether carried-on or checked. The projector is surrounded by a high-density foam cavity with adjustable hook and loop straps to secure it. Two zipper mesh pockets in lid hold accessories. Some models also include space in lid for laptop. Security is provided using a triple-digit combination lock. Telescoping 40" handle is recessed to provide better protection during transit. Sealed ball bearing in-line skate wheels mounted at the corners provide for a stable, quiet ride over a variety of road surfaces. A recessed two-stage locking handle system with a comfort grip stows safely away during transit. A key lock on each flip latch provides extra security if needed. Available for a variety of notebook-sized projectors.



Executive Leather Carry Case

Add class to any presentation. Designed to meet U.S. carry-on regulations, these stylish genuine leather cases protect most notebook-sized projectors and laptop computers up to 14.5" x 12.5" x 3". ABS plastic in the walls and high-density foam around the projector cushion impact and absorb shocks. Dual hook and loop straps secure the laptop in its own compartment and an adjustable divider in the projector compartment separates your projector and accessories. YKK zippered compartments for projector and accessories, laptop computer, airline tickets and letter-sized documents.



PROJECTOR CASES

PKB-2 Presentation Kit Bag

A soft bag with two main compartments, the PKB-2 has ample room for a portable projector and laptop computer. A detachable cushioned pouch provides double protection for the laptop. The roomy exterior compartment is ideal for holding paperwork or other accessories. A front dual-zipped U-Pocket lets you store disks, books, notebooks, or personal items.

The PKB-2 bag has a rugged, square-frame tote bar and smooth-glide inline skate wheels ensure effortless roll-along toting without play or jiggle. Features include easy-grip padded top handles and an adjustable shoulder strap, and dual-directional zippers for fast and easy access. Offers an adjustable shoulder strap or padded top handle.

PKB-2 Presentation Bag-Black (PEPPKB2B)129.95



PORTABRACE PR-C2, PR-C3 Projector Cases



The PR-C2 and PR-C3 are padded cases designed to carry various portable projectors with a laptop computer and accessories. It has interior and exterior pockets for cables and accessories, and a removable laptop pocket to allow you to carry the laptop separately. They open flat so setting up your projector is as simple as unzipping the case and plugging it in. Tie-down straps keep your projector secure when in use. The cases can be carried via their overlapping suede lather handles and the included HB-40a heavy duty shoulder strap.

- ◆ Main section with padding on all sides
- Two tie-down straps secure the projector
- Detachable computer case module for 17" laptops that can be carried separately
- ◆ Pockets
- Internal zippered slip pocket for cables and accessories
- Large outside slip pocket for notes, literature, and small cords

PR-C2 Projector Case (POPRC2): Exterior Dimensions: 16.5 x 7.0 x 13.5"; Interior Dimensions: 14.8 x 4.5 x 13"; it weighs 3.0 lbs.....**189.95**

PR-C3 Projector Case (POPRC3): Exterior Dimensions: 18 x 9.0 x 14"; Interior Dimensions: 17 x 6.5 x 13.5"; it weighs 3.25 lbs.....**199.95**

PORTER CASE

Elite AVCS AV/Computer Case (PO1504EAVD)

The Elite AVCS case has a "multi-form" interior designed to accommodate today's ultra small LCD projectors. It has a 1/2" high density foam pad in the bottom, a 12.5" x 10.5" x 4.5" padded cloth covered ring and high density foam for the lid. It has 4" ball bearing soft tread wheels for quiet rolling, padded 43" telescopic handle, combination lock and a side strap handle. Best of all, the case instantly converts into a heavy duty cart to carry up to 200 lbs. of other equipment on top. It fits under most airline seats and/or in overheads.....**199.95**



Rolling Softie 250

Projector Case (PORS250)

The Rolling Softie 250 is a semi-rigid padded rolling case designed to carry a projector, laptop and accessories. It has semi-rigid, padded 1600 denier nylon walls with #10 zippers. There are six inline skate wheels (3 per side) spaced 14.5" wide, a 41" extension handle, soft feel top carry handle and a padded shoulder strap...**149.95**

PROJECTOR REPLACEMENT LAMPS

For 3M Projectors

165-watt UHB lamp for X55 (3MLKX55)	379.95
150-watt UHB lamp for S40, X40, MP-7640i (3MLKMP7640I)	319.95
130-watt UHB lamp for MP7640 (3MLKMP7640)	362.50
150-watt UHB lamp for S50, MP-7650 (3MLKMP7650)	364.95
250-watt UHB lamp for X65, MP-8765 (3MLKMP8765)	409.95
130-watt UHB lamp for S10 (3MLKS10)	299.95
165-watt UHB lamp for S15 (3MLKS15)	347.95
165-watt UHB lamp for X15 (3MLKS15X15)	347.95
160-watt UHB lamp for S20 (3MLKS20)	358.95
180-watt lamp for S55i and X55i (3MLKS55I)	379.95
275-watt UHB lamp for X70 (3MLKX70)	468.95
230-watt UHB lamp - for X75 (3MLKX75)	402.95
230-watt UHB lamp for X68 (3MLKX75X68)	402.95
Lamp for X80 (3MLKX80)	474.95
130-watt UHB lamp for PX5 (3MLKPX5)	509.95
Lamp for 7000 Series (3MDWD7260LA)	512.50

For BenQ Projectors

Replacement lamp for PE8720 (BELPE8720)	399.95
Replacement lamp for PE7700 (BELPE7700)	399.95
Replacement lamp for PB8250/8260 (BELPB8250)	499.95
Replacement lamp for PB7110 (BELPB7110)	399.95
Replacement lamp for PB2140/2240 (BELPB2140)	399.95
Replacement lamp for PE5120/6110/6210 (BELPE5120)	399.95
Replacement lamp for VP150X (BELVP150X)	399.95
Replacement lamp for SL703S/705S705X (BELSL703S)	399.95
Replacement lamp for 7763PA/7765PA (BEL7763PA)	399.95
Replacement lamp for PE7800/PE8700 (BELPE7800)	399.95
Replacement lamp for PB2120/PB2220 (BELPB2120)	399.95
Replacement lamp for DS550/DX550 (BELDS550)	399.95
Replacement lamp for DS650/DS660/DX660 (BELDS650)	399.95
Replacement lamp for PB8120/PB8220/PB8230 (BELPB8120)	399.95
Replacement lamp for PB7100/PB7200/PB7210/PB7220 (BELPB7100)	399.95
Replacement lamp for PB6100/PB6200 (BELPB6100)	399.95
Replacement lamp for PB9200 (BELPB9200)	549.95
Replacement lamp for PB6240 (BELPB6240)	399.95
Replacement lamp for MP610 (BELMP610)	399.95
Replacement lamp for PE5120/PB6110/PB6210 (BELPE5120)	499.00
Replacement lamp for PB2250 (BELPB2250)	399.95
Replacement lamp for CP120 (BELCP120)	399.95
Replacement lamp for MP620/MP720 (BELMP620)	399.95
Replacement lamp for MP720P (BELMP720P)	399.95

For Canon Projectors

200-watt UHB lamp for LV-X4 (CALVLP21)	429.95
300-watt NSH lamp for LV-7565 (CALVLP22)	449.95
160-watt UHP lamp for LV-S4 (CALVLP23)	279.95
190-watt NSH lamp for LV-7240/7245 (CALVLP24)	414.95
130-watt NSH lamp for LV-X5 (CALVLP25)	279.95
Replacement lamp for LV-7250/7255 (CALVLP26)	374.95
Replacement lamp for LV-X6 (CALVLP27)	299.95
160-watt metal halide lamp for LV-7500 (CALVLP02)	439.95
120-watt UHP lamp for LV-7300 (CALVLP03)	369.95
150-watt UHP lamp for LV-7510 (CALVLP04)	399.95
150-watt UHP lamp for LV-7320/LV-7325 (CALVLP05)	429.95
200-watt UHP lamp for LV-7525 (CALVLP06)	429.95
120-watt UHP lamp for LV-5300 (CALVLP07)	427.50
132-watt UHP lamp for LV-5100/LV-5110 (CALVLP10)	399.95
200-watt UHP lamp for LV-7345/LV-7350/LV-7355 (CALVLP11)	429.95
150-watt UHP lamp for LV-S1/LV-X1 (CALVLP12)	429.95
200-watt UHP lamp for LV-7545 (CALVLP13)	449.95
150-watt UHP lamp for LV-S2 (CALVLP14)	429.95
132-watt UHP lamp for LV-X2 (CALVLP15)	429.95
180-watt UHP lamp for LV-5200 (CALVLP16)	429.95
300-watt NSH lamp for LV-7555 (CALVLP17)	369.50
200-watt UHP lamp for LV-7210/LV-7215/LV-7225 (CALVLP18)	429.95
Replacement lamp for LV-5210/LV-5220 (CALVLP19)	429.95
160-watt UHP lamp for LV-S3 (CALVLP20)	279.95
Replacement lamp for REALiS SX6/SX600 (CARSLP02)	439.95
200-watt NSH lamp for REALiS SX50 (CARSLP01)	424.95

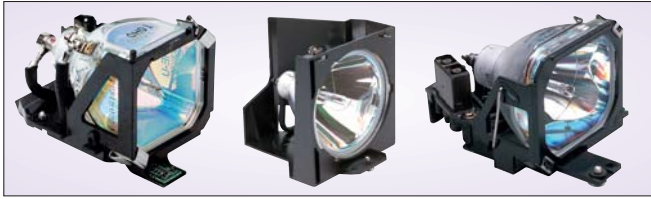
For Casio Projectors

220-watt UHM lamp for XJ-350 (CAYL30)	349.95
200-watt high pressure mercury lamp for XJ-360 (CAYL31)	349.95
250-watt UHM lamp for XJ-450 (CAYL40)	399.95
270-watt high pressure mercury lamp for XJ-560 (CAYL41)	379.95

For Elmo Projectors

150-watt UHP lamp for EDP-3600/EDP-6100 (ELLEDP3600)	439.95
130-watt UHP lamp for EDP-S10 (ELLEDP510)	398.50
160-watt UHP lamp for EDP-X20 (ELLEDPX20)	444.95
260-watt Super High Pressure Mercury lamp for MP-50E (ELLKMP50E)	518.95
300-watt Super High Pressure Mercury lamp for MP-700E (ELLKMP700E)	529.95

PROJECTOR REPLACEMENT LAMPS



For Epson Projectors

230-watt UHE lamp for PowerLite 8100, 8150, 9000, 9100 (EPLPL8100).....	579.95
100-watt lamp for ELP-3500 (EPELPL3500)	368.50
150-watt lamp for PowerLite 5000/7000 (EPLPL5000)	369.95
150-watt UHE lamp for PowerLite 5000XB/7000XB (EPELPLP04).....	464.95
120-watt UHE lamp for PowerLite 5300/7200/7300 (EPLPL5300).....	474.95
120-watt UHE lamp for PowerLite 5500c, 7500c (EPLPL5500).....	389.95
120-watt UHE lamp for PowerLite 5550c, 7550c (EPLPL5550).....	389.50
220-watt UHE lamp for PowerLite 8000i, 9000i (EPELPLP08)	534.95
150-watt UHE lamp for PowerLite 5350, 7350 (EPLPL7350)	474.95
120-watt UHE lamp for PowerLite 500c, 700c (EPLPL700).....	359.95
120-watt UHE lamp for PowerLite 710c (EPLPL710)	354.50
200-watt UHE lamp for PowerLite 7700p (EPELPLP12).....	499.95
150-watt UHE lamp for PowerLite 50c, 70c (EPLPL50).....	379.95
150-watt UHE lamp for PowerLite 505c, 703c, 715c (EPLPL505).....	349.95
150-watt Metal Halide lamp for ELP-3000/ELP-3300 (EPELPLP3000).....	368.50
130-watt UHE lamp for PowerLite 30c (EPLPL30).....	349.95
160-watt UHE lamp for PowerLite 51c, 71c (EPLPL51)	364.95
130-watt UHE lamp for PowerLite 52c (EPLPL52).....	349.95
165-watt lamp for PowerLite 53c, 73c (EPLPL53).....	399.95
200-watt UHE lamp for PowerLite 54c, 74c (EPLPL54)	374.95
200-watt UHE lamp for PowerLite 600p, 800p, 811p (EPLPL600).....	479.95
150-watt UHE lamp for PowerLite 720c, 730c (EPLPL720).....	474.95
170-watt lamp for PowerLite 732c, 740c, 745c, 760c, 765c (EPLPL740C).....	429.95
250-watt UHE lamp for PowerLite 7800, 7850, 7900 (EPLPL7800).....	449.95
200-watt UHE lamp for PowerLite 821p, 61, 81 (EPLPL61P)	269.95
200-watt UHE lamp for PowerLite 830, 835 (EPLPL830P).....	474.95
200-watt UHE lamp for PowerLite 9300 (EPLPL9300).....	549.95
130-watt UHE lamp for PowerLite S1 (EPLPLS1)	189.95
130-watt UHE lamp for PowerLite S1+ (EPLPLS1P)	189.95
135-watt UHE lamp for PowerLite S3 (EPLPLS3)	189.95
150-watt UHE lamp for TW100, TS10 (EPLPLTW100).....	369.95
320-watt UHE lamp for PowerLite 8300i (EPLPL8300).....	639.95
170-watt UHE lamp for PowerLite 76c (EPLPL76).....	299.00
Replacement lamp for PowerLite S4 (EPLPLS4).....	189.95

For Hitachi Projectors

150-watt UHP lamp for CP-S840W (HILCPS840)	469.95
190-watt UHB lamp for CP-S860W, CP-X960W, CP-X970W, CP-X958 (HILCPS860).....	469.95
150-watt UHB lamp for CP-X870 (HILCP870).....	459.95
250-watt UHB lamp for CP-X980W, CP-X985W (HILCPX980)	497.95
250-watt Metal Halide lamp for CP-L500 (HILCPL500)	538.50
250-watt Metal Halide lamp for CP-L540 (HILCPL540)	399.95
250-watt Metal Halide lamp for CP-L550 (HILCPL550)	399.95
250-watt Metal Halide lamp for CP-L750 (HILCPL750)	399.95
250-watt Metal Halide lamp for CP-L850/X950 (HILCPS850)	399.95
130-watt UHB lamp for CP-S210W (HILCPS210)	194.95
130-watt UHB lamp for CP-S220W, CP-X270W (HILCPS220)	399.95
150-watt UHB lamp for CP-S225W (HILCPS225).....	431.95
160-watt UHB lamp for CP-S235W (HILCPS235)	209.95
250-watt UHB lamp for CP-S420 (HILCPS240)	294.95
150-watt UHB lamp for CP-S317W, CP-S318W, CP-X328W, ED-S3170A (HILCPS317).....	431.95
165-watt lamp for CP-S335, CP-X340, CP-X345 (HILCPS335)	389.95
150-watt UHB lamp for CP-S830 (HILCPS830)	469.95
220-watt UHB lamp for CP-SX5500W, CP-SX5600W (HILCPSX5500)	497.95
230-watt UHB lamp for CPX-440 and CPX-445 (HILCPX445)	394.95
310-watt UHB lamp for CPX-1200 (HILCPX1200).....	479.95
310-watt UHB lamp for CPX-1250 (HILCPX1250).....	459.95
Replacement lamp for CP-X260 (HILCPX260)	289.95
150-watt UHB lamp for CP-X275WT (HILCPX275)	419.95
160-watt UHB lamp for X320W, CP-X325W, CP-X310W (HILCPX320)	469.95
150-watt UHB lamp for CP-X327W (HILCPX327).....	431.95
200-watt UHB lamp for CP-S370W, CP-X380W, CP-X385W (HILCPS370).....	469.95
250-watt UHB lamp for CP-X430W (HILCPX430).....	469.95
120-watt UHP lamp for CP-X935W (HILCPX935).....	399.95
150-watt UHP lamp for CP-X940W (HILCPX940).....	469.95
260-watt Metal Halide lamp for CP-X950W (HILCPX950)	399.95
150-watt UHB lamp for CP-X955W (HILCPX955).....	469.95
275-watt UHB lamp for CP-X990W, CP-X995W (HILCPX990)	497.95
165-watt UHB lamp for CP-RS55, CP-RX60 (HILCPRS55)	184.95
150-watt UHP lamp for CP-S840WB, CP-S845W, CP-X940WB (HILCPS840WB)	469.95
Replacement lamp for CP-X885, CP-X880 (HILCP885)	459.95



PROJECTOR REPLACEMENT LAMPS

For InFocus (and Ask Proxima) Projectors

200-watt UHP lamp for DP-9270, DP-9290 (INLDP9270)	688.95
270-watt UHP lamp for InFocus LP-790 and Ask Proxima DP-8000 (INLDP8000)	482.95
120-watt UHP lamp for InFocus LP-70 and Ask Proxima M2 (INLLP70)	418.95
150-watt UHP lamp for Pro AV 9500, 9550 (INLPAV9500)	598.95
132-watt UHP lamp for LP-240 (INLLP240)	388.95
250-watt UHP lamp for LP-650, SP5700, SP7200 and SP7205 (INLLP650)	519.95
150-watt UHP lamp for LP-250 (INLLP250)	388.95
250-watt UHP lamp for LP-790HB (INLLP790HB)	448.95
150-watt SHP lamp for X1, X1a and SP4800 (INLX1)	289.95
250-watt UHP lamp for InFocus LP-820, 815, Ask Proxima C-420 and Proxima DP-8200X (INLDP8200X)	393.95
120-watt UHP lamp for InFocus LP-120 and Proxima DP-1200X (INLDP1200X)	364.95
275-watt UHB for InFocus LP-840, Ask Proxima C-440 and Proxima DP-8400X (INLDP8400X)	448.95
320-watt UHB lamp for InFocus LP-850, Ask Proxima C-450 and Proxima DP-8500X (INLDP8500X)	489.95
170-watt UHP for SP-5000 LP-540, LP-640 and Ask Proxima C160/180 (INLLP540)	319.50
200-watt SHP lamp for InFocus X2 and Ask Proxima C110 (INLX2)	294.50
200-watt SHP lamp for InFocus LP-600, Ask Proxima C170 (INLLP600)	498.95
Replacement lamp for ScreenPlay 4805 (INLSP4805)	339.00
Replacement lamp for IN72, IN74 and IN76 (INLIN72)	374.95
120-watt UHP lamp for LP-130 (INLLP130)	369.95

For Panasonic Projectors

220-watt UHM lamp for PT-LB30 (PAETLAB30)	354.95
130-watt UHM lamp for PT-AE700 (PAETLAE700)	339.95
130-watt UHM lamp for PT-LM1, PT-LM2 (PAETLAM1)	286.95
160-watt UHM lamp for PT-L711, PT-L701, PT-L501 (PAETLA701)	359.95
220-watt UHM lamp for PT-L520U/720U/730NTU (PAETLA730)	384.95
200-watt UHM lamp for PT-L735 (PAETLA735)	374.95
270-watt UHM lamp for PT-L780NTU, PT-L750U (PAETLA780)	499.95
270-watt UHM lamp for PT-L785 (PAETLA785)	459.95
160-watt UHM lamp for PT-LC55U, PT-LC75U (PAETLAC75)	378.95
160-watt UHM lamp for PT-LC56U, LC76U, LC80U (PAETLAC80)	274.95
130-watt UHM lamp for PT-AE900U (PAETLAE900)	339.95
155-watt UHM lamp for PT-LB20 Series (PAETLAB10)	288.95
300-watt UHM lamp for PT-D3500 (PAETLAD35)	439.95

For Optoma Projectors

Replacement lamp for the HD7100 (OPLHD7100)	429.95
Replacement lamp for the HD72 (OPLHD72)	398.95
120-watt P-VIP lamp for EZ Pro 725 (OPLEP725)	399.95
180-watt UHP lamp for EZ Pro 719 (OPLEP719)	319.95
250-watt Metal Halide lamp for EP600, EP680 (OPMHLEP600)	424.95
250-watt UHP lamp for EP 755A and H56A (OPLEP755A)	399.95
250-watt Metal Halide lamp for EP580 (OPMHLEP580)	298.95
270-watt Metal Halide lamp for EP700 (OPMHLEP700)	398.95
156-watt P-VIP lamp for EZ Pro 729 (OPLEP729)	399.95
250-watt UHP lamp for EP758 and EP751 (OPLEP758)	399.95
400-watt EVD lamp for EP500 and EP550 (OPOLEP500)	159.95
200-watt SHP lamp for EP732 Series (OPLEP732)	299.95
200-watt UHP lamp for EP750, H50 (OPLEP750)	399.95
250-watt UHP lamp for EP756, EP757 (OPLEP756)	399.95
330-watt Metal Halide lamp for EZ Pro 540 & 585 (OPMHLEP540)	198.95
150-watt UHP lamp for EP 610 (OPLEP610)	379.95
150-watt UHP lamp for EP 610H, 615H (OPLEP610H)	399.95
120-watt P-VIP lamp for EP 702, 705 (OPLEP705)	399.95
150-watt P-VIP lamp for EP 705H, 715H, 718 (OPLEP705H)	399.95
120-watt P-VIP lamp for EP 710 (OPLEP710)	399.95
130-watt P-VIP lamp for EP 730,735 (OPLEP735)	399.95
120-watt P-VIP lamp for EP 731 (OPLEP731)	399.95
150-watt P-VIP lamp for EP 737 (OPLEP737)	399.95
300-watt UHP lamp for EP 759 (OPLEP759)	449.95
180-watt P-VIP lamp for H30 (OPLEPH30Q)	299.95
250-watt UHP lamp for H30 (OPLEPH30)	399.95
200-watt lamp for EP 739, H27 (OPLEP739)	319.95
200-watt P-VIP lamp for EP 738 (OPLEP738)	299.95
250-watt UHP lamp for H77, H79 (OPLEPH77)	399.95
250-watt UHP lamp for H76 (OPLEPH76)	399.95

For Plus Projectors

120-watt P-VIP lamp for U2-870, U2-1080 (PLLU2870)	398.95
200-watt UHP lamp for U2-1200 (PLLU21200)	348.95
200-watt UHP lamp for U2-X2000 (PLLU2X2000)	348.95
130-watt UHP lamp for U3 Series (PLLU3)	298.95
150-watt UHP lamp for U4 Series (PLLU4)	348.95
200-watt UHP lamp for U5 Series (PLLU5132)	349.95
200-watt lamp for U7 Series (PLLU7)	348.95
120-watt P-VIP lamp for V-807 (PLLV807)	295.00
120-watt lamp for V3-111, V3-131 (PLLV3)	348.95
120-watt lamp for V-332 (PLLV332)	348.95

PROJECTOR REPLACEMENT LAMPS

For Sanyo Projectors

Replacement lamp for PLC-XF46N (SALPLCXF46N)	395.95
Replacement lamp for PLC-XP57L (SALPLCX57L).....	395.95
300-watt NHS lamp for PLC-XP51, PLC-XP56 (SALPLCX56)	395.95
200-watt Metal Halide lamp for PLC-250N (SALPLC250N).....	395.95
195w Metal Halide lamp for PLC-400N/500M/510M (SALPLC500M).....	319.95
250-watt Metal Halide lamp for PLC-5500N (SALPLC5500N)	299.95
200-watt Metal Halide lamp for PLC-550M, PLV-20N (SALPLC550M).....	344.95
120-watt UHP lamp for PLC-8800N/8810/XR70N (SALPLC8810N).....	379.95
400-watt Metal Halide lamp for PLC-700M/750M (SALPLC700M).....	574.95
400-watt Metal Halide lamp for PLC-9000, PLC-EF10 (SALPLC9000N).....	269.95
400-watt Metal Halide lamp for PLC-EF10NZ/NZL, PLC-EF12N/NL, PLC-XF10NZ/NZL, PLC-12N/NL (SALPLCEF10NZ)	395.95
200-watt UHP lamp for PLC-EF30N/NL, XF30/NL (SALPLCEF30N)	379.95
160-watt Mercury lamp for PLC-XP10N (SALPLCX10N).....	395.95
120-watt UHP lamp for PLC-SU07N, PLC-SU10N (SALPLCSU10N)	379.95
120-watt UHP lamp for PLC-SU20N/SU22N/XU22N (SALPLCSU20N).....	379.95
180-watt UHP lamp for PLC-SU25, PLC-XU36 (SALPLCSU25)	395.95
200-watt UHP lamp for PLC-SU5, PLC-XU56 (SALPLCSU50)	395.95
132-watt UHP lamp for PLC-SW15, PLC-XW15 (SALPLCSW15)	379.95
150-watt UHP lamp for PLC-SW20, PLC-XW20 (SALPLCSW20)	379.95
200-watt UHP lamp for PLC-UF10, PLC-XF40 (SALPLCUF10).....	379.95
200-watt UHP lamp for PLC-UF15, PLC-XF45 (SALPLCUF15).....	395.95
200-watt UHP lamp for PLC-XF30, PLC-EF30 (SALXF30).....	399.95
250-watt UHP lamp for PLC-XF35N/NL (SALPLCXF35N)	395.95
300-watt for PLC-XF60, PLC-EF60 (SALPLCXF60)	574.95
150-watt UHP lamp for PLC-XP10NA, PLC-SP20N (SALPLCX10NA).....	395.95
250-watt NSH lamp for PLC-XP30 (SALPLCX30)	399.95
Replacement lamp for PLC-XP40, XP45, PLV-70 (SALPLCX40L).....	399.95
275-watt NSH lamp for PLC-XP41, PLC-XP46 (SALPLCX41)	395.95
300-watt NSH lamp for PLC-XP50/L, XP55/L (SALPLCX55).....	399.95
250-watt UHP lamp for PLC-XT10A, XT11, XT15A (SALPLCXT15A).....	395.95
200-watt UHP lamp for PLC-XU25/47/48/50/51/55/58 (SALPLCXU55).....	399.95
200w UHP lamp for PLC-XU32/33/35/37, SU31/32/33 (SALPLCXU30).....	379.95
200-watt UHP lamp for PLC-XU41 (SALPLCXU41)	364.95
200w UHP lamp for PLC-XU45 (SALPLCXU45), PLC-XU46 (SALPLCXU46).....	395.95
300-watt NSH lamp for PLC-XU60 (SALPLCXU60).....	395.95
200-watt UHP lamp for PLC-XU73/XU83/XU86 (SALPLCXU73)	299.95
120-watt UHP lamp for PLC-XU07N, PLC-XU10N (SALPLCXU07N).....	379.95
300-watt UHP lamp for PLV-80 (SALPLV80)	395.95
250w UHP lamp for PLV-HD10 (SALPLVHD10), PLV-WF10 (SALPLVWF10).....	395.95
130-watt UHP lamp for PLV-Z1 (SALPLVZ1).....	287.50
135-watt UHP lamp for PLV-Z2 (SALPLVZ2), PLV-Z3 (SALPLVZ3).....	284.95
145-watt UHP lamp for PLV-Z4 (SALPLVZ4).....	296.50

For Sharp Projectors

275-watt DC lamp for XG-MB70X (SHLXGMB70X).....	474.95
275-watt DC lamp for XR-10S, XR-10X (SHLXR10S)	289.95
150-watt lamp for XR-1S, XR-1 (SHLXR1S).....	374.95
Replacement lamp for PGA-10S/10X/20X (SHLPGA10)	384.95
Replacement lamp for PGA-10S/SSL/X/20X (SHLPGA20).....	384.95
Replacement lamp for XV-Z10000 (SHANK10LP).....	599.00
Replacement lamp for XV-Z10000 MKII (SHANK12LP).....	599.00
275-watt DC lamp for XVZ2000, DT400 (SHANK2LP).....	499.00
Replacement lamp for XV-Z90000 (SHANK9LP).....	599.00
Replacement lamp for XG-P25X (SHLXP25X)	469.95
Replacement lamp for XG-PH50X/NL (SHLXGPH50X).....	479.95
275-watt DC lamp for XR-20S, XR-20X (SHLXR20S)	344.95
Replacement lamp for XV-Z200U (SHANZ200LP)	599.00
Replacement lamp for XV-Z90U, DT200 (SHANZ90LP)	599.00
Replacement lamp for PG-B10S (SHANZ90LP)	339.00
300-watt SHP lamp for XG-C55X, XG-C60X (SHLXGC60X)	429.95
220-watt AC lamp for XG-P20XU (SHLXGP20XU).....	469.95
200-watt UHP lamp for XG-V10W, XG-V10X (SHLXGV10W).....	534.95
200-watt lamp for PG-MB20X (SHLPGMB60X).....	474.95
Replacement lamp for PG-M20X, XU, S, G25X (SHLPGM20X).....	405.95

For Sony Projectors

120-watt UHP lamp for VPL-CS1, CS2, CX1 (SOLMPC120).....	289.95
120-watt UHP lamp for VPL-CS3, CS4, CX2 (SOLMPC121).....	309.95
132-watt UHP lamp for VPL-CX10 (SOLMPC132), VPL-CS10 (SOLMPC133)	289.95
165-watt UHP lamp for VPL-CS5/CS6/CX5/CX6/EX1 (SOLMPC150).....	329.95
165-watt UHP lamp for VPL-CX11 (SOLMPC160).....	359.95
165-watt UHP lamp for VPL-CX70, VPL-CX75 (SOLMPC161).....	364.95
165-watt UHP lamp for VPL-CS20A and CX20A (SOLMPC162).....	389.95
Replacement lamp for VPL-CX80, VPL-CX85 (SOLMPC190)	389.95
157-watt UHP lamp for VPL-ES2 (SOLMPE150).....	389.95
185-watt UHP lamp for VPL-CS7, VPL-DS100 (SOLMPE180)	319.95
250-watt UHP lamp for VPL-FX50 (SOLMPF250)	499.95
300-watt UHP lamp for VPL-FX51 (SOLMPF300)	619.95
150-watt UHP lamp for VPL-HS2, VPL-HS3 (SOLMPH150)	199.00
180-watt UHP lamp for VPL-HS20 (SOLMPH180).....	274.95
120-watt UHP lamp for VPL-PX1 (SOLMPP120).....	309.95
200-watt UHP lamp for VPL-PX20, PX30 (SOLMPP200).....	484.95
200-watt UHP lamp for VPL-PX21/PX31/VW12HT (SOLMPP201)	389.95
200-watt UHP lamp for VPL-PX10/PX15/PS10 (SOLMPP202).....	479.95
265-watt UHP lamp for VPL-PX35, VPL-PX40, PX41 (SOLMPP260).....	479.95
120-watt UHP lamp for VPL-FX200, VPL-FE100 (SOLMPS120).....	309.95
Replacement lamp for VPL-HS51 (SOLMPH130).....	269.00

REMOTE CONTROLS

VP-4150 Navigator 2.4

Put more punch in your PowerPoint presentations. Navigator 2.4 (2.4 GHz Global RF) puts slide control discretely in the palm of your hand. The compact size is comfortable to operate and raised icons identify options, even in the dark. With up to 50' of wireless range and no line-of-sight issues, you can focus on your audience, not the slides. Every Navigator shares a unique code with its receiver and can communicate on 4 separate channels, preventing interference from other remote controls.

- ◆ No set-up. Just plug in the USB receiver and pick up the remote.
- ◆ Supports popular PC and Mac presentation programs.
- ◆ Advance slides with one touch accuracy from 50' away.
- ◆ Highlight key points with the integrated laser pointer.

- ◆ Polished metal, icon-studded control keys support Slide Forward, Slide Back and Slide Hide functions.

Navigator 2.4 (INVP4150)84.95



VP-4300 Presenter

Combining powerful RF technology (900MHz) with thoughtful details, Presenter has unmatched style, range and versatility. The state-of-the-art remote features raised icons, the patented ClickTrigger, a laser pointer and thumb maneuvered mouse. Specialized software provides ultimate presentation flair with more 95 special effect tools to customize your next presentation. The USB receiver gives you 100' of wireless range and doubles as a hard drive with 32MB of presentation storage space. Take your presentation on the road, without having to lug a computer.

- ◆ 32MB of portable memory storage to save and run your presentation.
- ◆ 100' RF wireless range means that no matter where you're facing in the room, your slides will advance on cue every time.
- ◆ Polished metal, icon-studded control keys support Slide Forward, Slide Back and Slide Hide functions.
- ◆ User assignable hot key and effects toolkit let you personalize your presentation style.

- ◆ When the time comes to present, one touch of the Slide Show button launches your presentation.

Presenter (INVP4300)134.95

VP-4350 Global Presenter *Whether you're giving sophisticated presentations in the boardroom, or simply surfing the Web from your home theater, Global Presenter (2.4 GHz Global RF) puts control right in the palm of your hand. Its dedicated PowerPoint keys and integrated mouse let you drive slide presentations and Web applications with ease and confidence.*

- ◆ Enjoy 100' range to move freely about the room and interact with your audience.
- ◆ Control Powerpoint's basics with ease via polished metal, icon-studded control keys: Next slide, Previous slide, Hide slide.
- ◆ Highlight key points with the integrated laser pointer.
- ◆ Use the mouse to access PowerPoint features like pointing and pen tools or access other programs during your presentation.



Global Presenter (INVP4350)114.95



VP-4810 RemotePoint RF

The ideal meeting room presentation remote, the VP-4810 is rugged, reliable, and easy to set up. It has back-lit keys for rooms with subdued lighting, a laser pointer to focus on the fine points and an intuitive mouse button for all Windows applications.

- ◆ Flexible installation of PS/2 / USB receiver with 6' cable.
- ◆ Fits small to large rooms with 100'-range RF (916MHz) technology.
- ◆ 4 backlight buttons customizable through easy to install software,
- ◆ Full featured with built-in laser pointer, mouse, and customizable buttons.
- ◆ Integrated mouse with right and left click Slide Forward and Backward controls.
- ◆ User-friendly software enables special effects.

RemotePoint RF (INVP4810)85.95



REMOTE CONTROLS

VP-6410 VersaPoint Communicator

Imagine your desk or conference table completely free from cable clutter. VersaPoint Communicator puts the computer at your command with the wireless freedom you need. Work collaboratively and pass the keyboard around a conference room with 30' RF range. Plug in the USB receiver, and in seconds you can point, type and present without any other software.

- ◆ PowerPoint compatible remote control with presentation remote buttons: Start/End Presentation; Previous, Next and Hide slide.
- ◆ Full-size wireless keyboard with multimedia functions and palm rest.
- ◆ Wireless optical wheel mouse.



◆ Single USB receiver for all three devices
VersaPoint Communicator (INVP6410)75.95



VP-6210 VersaPoint RF Wireless Keyboard

The compact, yet versatile VersaPoint RF (916 MHz) Wireless Keyboard combines mouse pointing with touch typing, all in a convenient wireless package with a 100' range. Ideal for video conferencing and collaborative meetings, it offers flexible usage with built-in mouse, and customizable hot keys. Installation is a snap. Just plug the omnidirectional RF receiver into your PC and go. No special drivers needed.

- ◆ Broadbeam RF signals are so powerful there is no need to aim directly at the receiver. Point it almost anywhere.
- ◆ Additional Left-Click buttons are comfortably positioned at the front where your fingers naturally grip the keyboard.
- ◆ 4 user hot keys are customizable through easy to install software.
- ◆ With the ability to set 8 different addresses, you can use several keyboard simultaneously without interference.
- ◆ Contours on the bottom the keyboard make it just as comfortable on your lap as on the desk or held in your hand.
- ◆ 6' cable for flexible receiver installation
- ◆ Quiet keys have tactile feedback for effortless touch typing.

VersaPoint Wireless Keyboard (INVP6210) ..137.95

VP-6241 RemotePoint RF Combo

The VP-6241 steps-up from the VP-6210 with the addition of the VP-4810 RemotePoint RF (see previous page). So in addition to a full-function wireless keyboard with built-in mouse, you get a presentation remote control with built-in mouse, laser pointer, and programmable buttons. The VP-4810 features dedicated slide Forward and Back keys, an integrated laser pointer, 360° variable speed "mouse" cursor control, Right and Left "mouse" click buttons, 4 user-assignable keys and a small arsenal of presentation software tools.

Remote Point RF Combo (INVP6241)159.95

VP-3300/VP-3400 Go Speak

Need a bigger, clearer voice for your next presentation? Take a Go Speak along. Portable voice reinforcement and amplification systems designed for corporate presenters, professional speakers, trainers, educators, facilities managers and field professional, they weigh less than 5 pounds, fit in the included laptop bag and set up in seconds. Make your presentation using your own relaxed vocal style, and be heard clearly and completely in rooms with as many as 200 people. Otherwise identical, the VP-3400 adds a wireless mic.



- ◆ Unlike conventional portable public address systems that have cone-shaped speakers, the GoSpeak uses slim flat panel speakers.
- ◆ The two flat panel speakers provide superior audio clarity and power with room filling NXT SurfaceSound technology.
- ◆ The VP-3300 and VP-3400 set up in seconds providing 40 watts of amplification for rooms of up to 200 people.

**VP-3300 Go Speak
 Portable Speaker System (INVP3300).....299.95**

**VP-3400 Go Speak
 Portable Speaker System with Wireless Mic (INVP3400).....424.95**

PROJECTOR LENSES

Replacement Projection Lenses

Navitar is the largest manufacturer in the world for aftermarket projection lenses. They've designed lenses for all kinds of applications, including trade show booths, museum exhibits, flight simulators, Broadway shows, planetariums, military bases and even Disney World rides. They make a lens to fit almost every projector on the market and are developing new ones every day. Their large selection includes a variety of zoom, long-throw and wide-angle replacement lenses. No matter what your application, screen size, or projection distance there is a replacement lens that will give you the image size you need.



Just one simple lens change gives you brilliant, high resolution images.

Renowned for delivering bright, sharp images at an affordable price, NuView high resolution projection lenses replace the existing prime lens on your projector and allow you to use your projector in a variety of new applications.

These replacement lenses extend the range of your projector and produce brilliant images. The zoom lenses are able to handle a variety of distance and image size combinations, while the fixed focal length lenses are generally less expensive and feature improved light output.

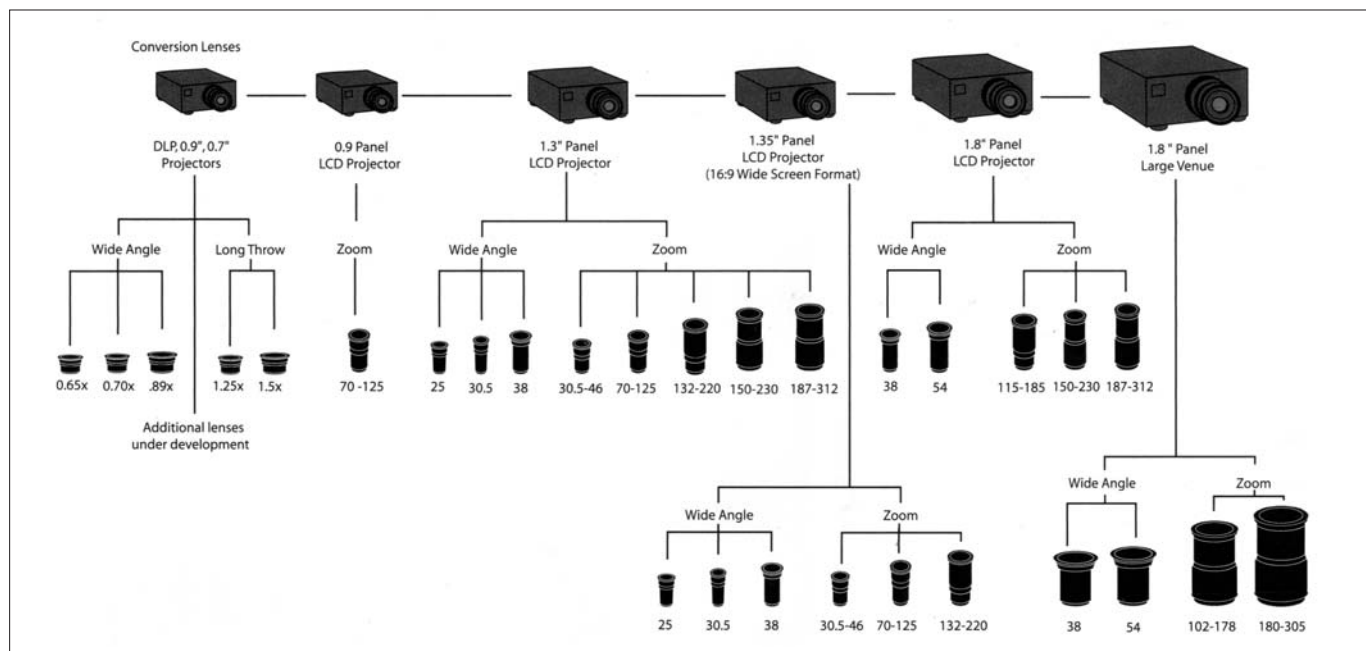
Replace your old 3 CRT projector.

Today's newer and brighter video projectors are the perfect replacement for the older 3 CRT projectors. You can use an LCD video projector in the same type of short throw applications by simply replacing the standard lens with a NuView wide-angle lens. There is a whole series of LCD lenses specifically for this application. Choose from 1.0, 1.2, 1.5 and 2.1" lenses.

Now you can project from the back of the room.

NuView lenses allow you to place your projector almost anywhere in the room and still fill your screen exactly. The standard lens in your video projector only works in mid-size rooms. The limited projection range of these lenses make them inadequate for many projection applications.

With Navitar's NuView long-throw or zoom lens, your projector is now suitable for use in large classrooms, auditoriums, churches and meeting rooms. The addition of a NuView wide-angle lens allows you to use the projector in rear screen applications or produce much larger images for front projection.



PROJECTOR LENSES

For 3M Projectors

50-75mm f/2.5 for X70 and X80 (BU648MCZ275).....**1498.95**

For ASK Projectors

25.4mm for C440 / C450 / C460 (BU655MCL1028).....**1874.95**

50-70mm f/2.5 for C440 / C450 / C460 (BU654MCZ275).....**1498.95**

70-125mm f/2.8 for C440 / C450 / C460 (BU654MCZ500).....**1324.95**

For BenQ Projectors

25.4mm for PB9200 (BU653MCL1028).....**1874.95**

132-220mm f/3.0 for PB9200 (BU653MCZ087).....**1662.50**

50-70mm f/2.5 for PB9200 (BU653MCZ275).....**1498.95**

70-125mm f/2.8 for PB9200 (BU653MCZ500).....**1324.95**

For Hitachi Projectors

25.4mm f/2.8 for CP-X1200/X1250/SX1350 (BU657MCL1028).....**1874.95**

50-70mm f/2.5 for CP-X1230 (BU657MCZ275).....**1498.95**

70-125mm f/2.8 for CP-X1230 (BU657MCZ500).....**1324.95**

132-220mm f/3.0 for CP-X1230 (BU656MCZ087).....**1662.50**

For Panasonic Projectors

18mm for PT-D5500U/UL, PT-D3500 (BU570MCL070).....**1999.95**

25.4mm for PT-D5500U/UL, PT-D3500 (BU570MCL1028).....**2124.95**

50-70mm f/2.5 for PT-D5500U/UL, PT-D3500 (BU570MCZ275).....**1498.95**

70-125mm f/2.8 for PT-D5500U/UL, PT-D3500 (BU570MCZ500).....**1324.95**

150-230mm f/3.5 for PT-D5500U/UL, PT-D3500 (BU570MCZ900).....**1562.50**

184-314mm f/2.8 for PT-D7700 (BU572MCZ151).....**3294.95**

For Sanyo Projectors

70-125mm f/2.8 for PLV-WF10 (BU371MCZ125).....**3294.95**

70-125mm f/2.8 for PLV-HD10 (BU373MCZ125).....**3294.95**

70-125mm f/2.8 for PLC-EF60 / PLC-XF60 (BU375MCZ125).....**3294.95**

70-125mm f/2.8 for PLC-XF31/35/41/45/EF31 (BU369MCZ125).....**2999.95**

70-125mm f/2.8 for PLC-XP40/41/45/P46 (BU829MCZ500).....**1324.95**

114-196mm f/2.8 for PLV-HD10 (BU373MCZ537).....**3294.95**

132-220mm f/3.0 - for PLC-XP18, XP21 (BU787MCZ087).....**1662.50**

132-220mm f/3.0 - for PLC-XP30 (BU794MCZ087).....**1662.50**

150-230mm f/3.5 - for PLC-XP30 (BU794MCZ900).....**1562.50**

150-230mm f/3.5 - for PLC-XP40/41/45/P46 (BU829MCZ900).....**1562.50**

184-314mm f/2.8 for PLV-WF10 (BU371MCZ151).....**3294.95**

184-314mm f/2.8 for PLV-HD10 (BU373MCZ151).....**3294.95**

184-314mm f/2.8 for PLC-EF60 / PLC-XF60 (BU375MCZ151).....**3294.95**

272-464mm f/3.0 for PLV-HD10 (BU373MCZ183).....**7497.95**

272-464mm f/3.0 for PLC-XF31/35/41/45/EF31 (BU369MCZ183).....**7497.95**

272-464mm f/3.0 for PLC-EF60 / PLC-XF60 (BU375MCZ183).....**7497.95**

For Sharp Projectors

50-75mm f/2.5 for XG-PH50X (BU582MCZ275).....**1498.95**

70-125mm f/2.8 for XG-PH50X (BU582MCZ500).....**1324.95**

150-230mm f/3.5 for XG-PH50X (BU582MCZ900).....**1562.50**

For Sony Projectors

70-125mm f/2.8 for VPL-PX21/31/32/FX50/51/52 (BU356MCZ500).....**1324.95**

70-125mm f/2.8 for VPL-VW12HT (BU367MCZ501).....**1244.95**

150-230mm f/3.5 for VPL-PX21/31/32, FX50/51/52 (BU356MCZ900).....**1562.50**

ScreenStar Conversion Lenses

Navitar ScreenStar wide-angle and long throw conversion lenses let you increase your picture size or increase your throw distance by 20-50%, anything is possible. The wide-angle conversion lenses provide a 25-50% larger image from the same projection distance or allow you to maintain the same size image while moving your projector closer to the screen. The telephoto conversion lenses allow users to place the projector 20-50% farther away from the screen and maintain the same image width or reduce your picture size while projecting from the same distance. ScreenStar lenses are compatible with a wide range of projectors including home theater projectors, conference projectors, portable projectors and educational projectors and projectors in price points of low cost, mid range and high performance projectors. No need to worry about technology wars between DLP vs LCD, ScreenStar lenses work with most projectors including standard 4:3 format as well as 16:9 format HD video projectors.

0.8x ScreenStar Wide Angle Converter (NASSW08): 25% Larger Image.....**939.95**

0.65x ScreenStar Wide Angle Converter (NASSW065): 50% Larger Image.....**1421.95**

1.2x ScreenStar Telephoto Converter (NASST120): 17% Smaller Image.....**939.95**

1.5x ScreenStar Telephoto Converter (NASST150): 33% Smaller Image.....**1421.95**

3x ScreenStar Telephoto Converter (NASST300): 67% Smaller Image.....**1752.95**



EMERGE EMS1000P • EMERGE EMS1000

Point-to-Point and Point-to-Multipoint Media Servers

Emerge EMS1000P and EMS1000 media streamers extend stereo audio and analog video from point to destination up to 600' or multiple destinations up to 750' over CAT5 cabling. They require no special software or operating system support. Just plug in the hardware components and they are ready to go. High resolution video is supported up to 1600 x 1200 pixels. The EMS1000P consists of a transmitter and receiver pair. The EMS1000 consists of a transmitter and up to 16 receivers. The transmitter is located at the source of the multimedia content. At the destination points, the receivers connect directly into the output devices such as plasma screens, projectors or monitors.

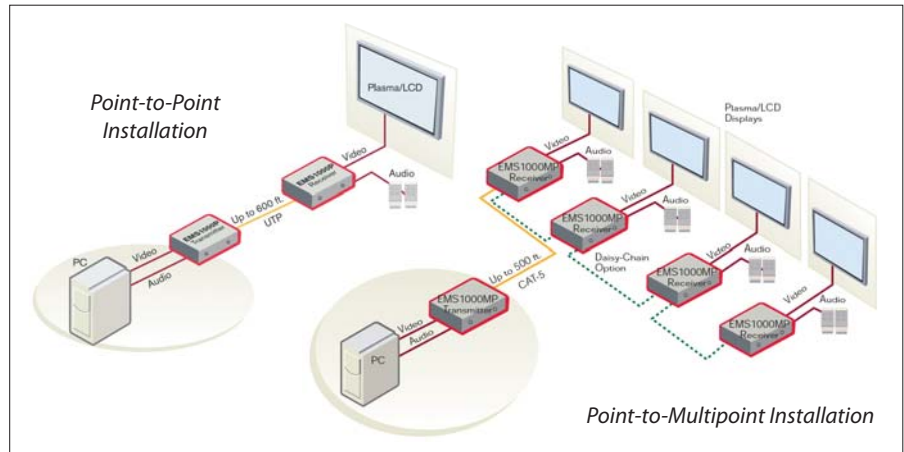
The EMS1000P and EMS1000 guaranty reliable transport of high quality audio and video.

With support for full-screen, full-motion video and high-fidelity stereo audio, high-impact content is securely delivered to the right place at the right time. Ideal for situations that require easy set up and high quality output, they take advantage of the distance and reliability characteristics of CAT 5 cabling. They also fit right into courtrooms, classrooms or board-rooms. With their portability, small footprint and hardware-only components, they can be quickly plugged in to create a multimedia A/V distribution system.



FEATURES

- ◆ Plug-and-play hardware-only solution means no software to install.
- ◆ Small metal case can be easily desk or rack mounted.
- ◆ High-quality, highly reliable A/V connectivity.
- ◆ High-fidelity clickless digital stereo audio gives high intelligibility.
- ◆ Streaming video with 1600 x 1200 resolution over low-cost CAT 5 cabling provides A/V extension up to 600- or 750'.
- ◆ Independent sharpness and brightness controls to optimize the picture.
- ◆ Full-screen, full-motion video support provides stutter-free playback.
- ◆ Advanced, spike-suppression circuits protect your investment.
- ◆ Daisy chain extension port on each receiver eliminates costly cable home runs (EMS1000 only).
- ◆ DDC support automatically identifies the maximum display resolution.
- ◆ Point-to-point and point-to-multipoint transmission gives maximum flexibility.
- ◆ Optional RMK-50 rackmount is available for the EMS1000 transmitter.



TRANSMITTER INPUTS

Computer Video Signals: Mini D-Sub 15-pin connector; up to 60hz vertical refresh

Video Signals: VGA, XGA, UXGA, WXGA

Audio: Stereo mini jack

Emerge EMS1000P Only

Power: 12v DC @ 1A from supplied 100-240 VAC 50/60 Hz switching power supply

Power Connector: 2.1mm ID, 5.5mm OD, 9.5mm length barrel connector, tip positive

RECEIVER OUTPUTS

Computer Video Signals: Mini D-Sub 15-pin socket connector; up to 60hz vertical refresh

Video Signal Formats: VGA, XGA, UXGA, WXGA

Audio: Stereo mini jack

Emerge EMS1000 Only

Power: 12v DC @ 1A from supplied 100-240 VAC 50/60 Hz switching power supply

Power Connector: 2.1mm ID, 5.5mm OD, 9.5mm length barrel connector, tip positive

ESP-2MI • ESP-4MI • ESP8MI

ESP Multi-Interface Serial Hubs

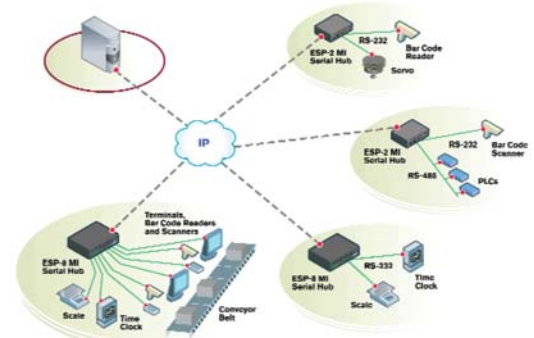
Available in 2, 4 and 8 port models, ESP multi-interface (MI) serial hubs allow serial COM/TTY ports to be placed at the point of need, anywhere on a local or remote LAN. These hubs allow Windows, Linux, AIX or SCO applications to communicate transparently with network-attached serial devices, as if they were directly connected. For solutions requiring one or two port connections, the compact ESP-2 MI provides serial over IP connectivity while satisfying the rigorous environmental demands and unique needs of industrial/factory automation applications. ESP serial hubs permit structured wiring, thus reducing the need for costly and troublesome long-haul serial cabling.



In addition to COM port redirection, the ESP-2 MI and ESP-4 MI offer serial tunneling and Telnet modes of operation. When configured to work in tandem, two units act as a virtual serial cable over IP networks. The onboard Telnet server enables Telnet clients to monitor and manage serially attached devices. An internal web server offers a secure means to configure and manage the ESP-2 MI and ESP-4 MI serial hubs. All ESP serial hubs support Equinox powerful management software applications, which include EquiView Plus for Windows and ESPDIAG for Unix and Linux.

FEATURES

- ◆ ESP MI serial hubs allow serial devices to become IP-enabled using RS-232, RS-422 and RS-485 protocols for industrial/manufacturing environments and commercial applications.
- ◆ Auto install for quick and consistent installations without on-site technical staff.
- ◆ RS-485 Multi-drop modes include RTS, ADDC, half-duplex.
- ◆ Multi-host attachment allows for high availability solutions.
- ◆ ESP-2 MI and ESP-4 MI allow selectable connection methods including Telnet Server, COM Redirection Raw TCP Client/Server, Serial Tunneling. Only COM Redirection on the ESP-8 MI.
- ◆ The ESP-2 MI and ESP-4 MI serial hubs include an internal web server which offers secure configuration and management.
- ◆ The ESP-2 MI and ESP-4 MI serial hubs' 'Single' mode preserves host resources when only one port is required.
- ◆ The ESP-2 MI has a power input option (detachable barrel connector and latching screw-block).
- ◆ The ESP-4 MI and ESP-8 MI serial hubs' signaling is soft selectable for flexibility.



ESP MULTI-INTERFACE SERIAL HUB SPECIFICATIONS

	ESP-2 MI (9-wire)	ESP-4 MI (9-wire)	ESP-8 MI (10-wire)
Model	990458	990476	990407
Power	9VDC - 30VDC (at less than 4W)	5VDC (1A)	100-250V (0.5A)
Connectors	DB-9 Male DTE	(4) DB-9 Male DTE	(8) RJ-45 DTE
Dimensions (HWD)	1.62" x 4.74" x 4.38"	1.50" x 5.50" x 6.75"	1.75" x 8.75" x 8"
Shipping Weight	2 lbs.	3 lbs.	6.4 lbs.
Speed (Kbps)	230	230	230
Modem Control	Full	Full	Full
Surge Support	Surge suppression on every pin of every port		
OS Support	Windows NT/2000/2003/XP, Citrix, Linux, AIX, Unix, SCO, and Solaris.		

EMERGE WMS1000

Wireless Media Streamer

The Avocent Emerge WMS1000 wireless media streamer broadcasts high quality, full motion, streaming video from a source computer to multiple display devices up to 1000' without wires. The WMS1000 makes digital signage installations simple and more cost effective by eliminating the need for miles of cabling and expensive PCs at each display.

The WMS1000 wireless media streamer is a pure and simple hardware solution that requires minimal set up time. On the source side, the transmitter connects directly to the repository files located on a computer, DVD player, or cable box receiver. At the remote end, the receiver connects directly into the output device which could be a plasma screen, projector or monitor. Use for point-to-point video extension or for a point-to-multipoint broadcast application; the only difference is the number of receivers connected to the output devices. Multiple device types can be connected to a single transmitter. The WMS1000 is compatible with most standard video input and output resolutions up to WXGA (1366 x 768). It is also compatible with most standard computers and video monitor hardware, and requires no special application or operating system software.



FEATURES

- ◆ Wireless output of 30 frames per second full motion video (MPEG2 D1). Up to WXGA compatible.
- ◆ A single transmitter automatically trains the receivers detected with a push of a button.
- ◆ Plug and Play. Quick, simple installation. No software to download or controls required. Transmits 250 feet through walls and up to 1000 feet line-of-sight.
- ◆ Supports multiple input/output formats including component, composite, S-Video, RGB computer video and stereo audio.
- ◆ The wireless transmitter switches to active input devices and automatically converts and routes video and audio signals to connected displays.
- ◆ Omni-directional (standard) and long distance directional antennas (optional) are available to suit the installation.
- ◆ 802.11a radio standard operates outside of the standard WLAN frequencies for higher QoS (Quality of service), interference-free connectivity.
- ◆ Proprietary communication protocol offers security and high bandwidth for challenging installations.
- ◆ Built-in Advanced Encryption Standard (AES) for secure wireless connectivity.

WMS1000 Specifications:

GENERAL

Power Supply: External, 9 volt @ 1amp AC to DC universal
Rated Power: 5 watts (transmitter), 4 watts (receiver)
Weight: 2 lbs.
Size (LWH): 6.5" x 4" x 1.25", metal enclosure with 75mm vesa mounts
Frequency: 5.2-8 ghz
Operating Temperature: 32° to 104°

PERFORMANCE

Distance: 250' through 3 walls. Up to 1000' line-of-sight
Compression: MPEG2

TRANSMITTER INPUTS

Compatibility: VGA (640 x 480), SVGA (800 x 600), XGA (1024 x 768), WVGA (850 x 480), WXGA (1366 x 768)
Refresh: Up to 70hz Vertical Refresh
Video Signals: Component, S-Video, Composite Video, 480I@30FPS
Audio: Stereo mini jack
Control: RS-232 D-sub 9 pin

RECEIVER OUTPUTS

Socket Connector: Mini D-Sub 15-pin
Compatibility: VGA (640 x 480), SVGA (800 x 600), XGA (1024 x 768), WVGA (850 x 480), WXGA (1366 x 768)
Refresh: Up to 70hz Vertical Refresh
Video Signals: Component, S-Video, Composite Video, 480I@30FPS
Audio: Stereo mini jack
Control: RS-232 D-sub 9 pin

MISC

Communication Modes: Point-to-Point. Multi-Casting to 8 Receivers
Security: Advanced Encryption Standard (AES)
Antennas: Two- 2 dBi omni directional (standard). Hi Output 8 dBi directional (optional)
Accessories: Power Supply, Power Supply Mount, Hi Output 8 dBi directional antenna (optional), Rack mount (optional)
Part Numbers: EWMS1000-001 TX/RX Bundle, EWMS 1000-001 TX 500-168-001, EWMS 1000-001 RX 510-133-001
Warranty: Two Years

EMERGE WMS1000



Smart Wireless Technology Design

The WMS1000 wireless media streamer uses a smart wireless technology design. The component hardware is capable of self-setup and adjustment to ensure that the highest quality signal strength and video transmission is maintained. As a result, the display device portrays smooth motion video with a stable, noiseless image.

Simple Setup:

Like a wireless keyboard, the WMS1000 wireless media streamer is set up or "trained" by simply pushing a button located on the wireless transmitter and on each receiver. No OSD is required. Subsequent displays/receivers can be added easily when conditions or requirements change. Display relocation is much quicker without bulky VGA cabling. Transmission of content occurs immediately and securely in the 802.11a band-width, freed from interference from other WLAN devices.

Signal Strength Indicator:

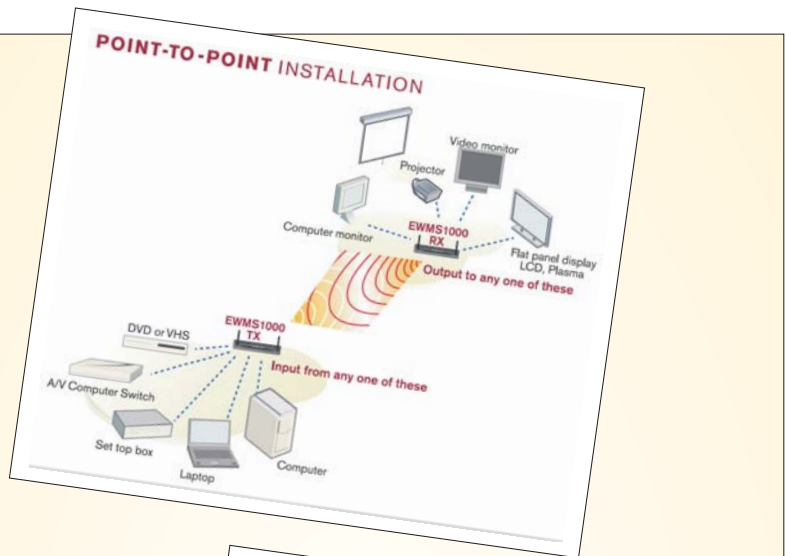
Built-in signal strength monitor light helps the installer find the best location for remote receiver units. Identifies performance-optimized mounting location automatically without special metering equipment.

Multi-Display RS-232 Interface:

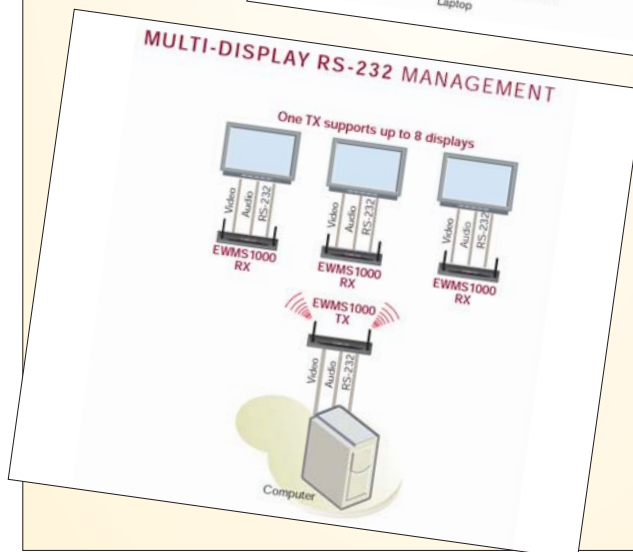
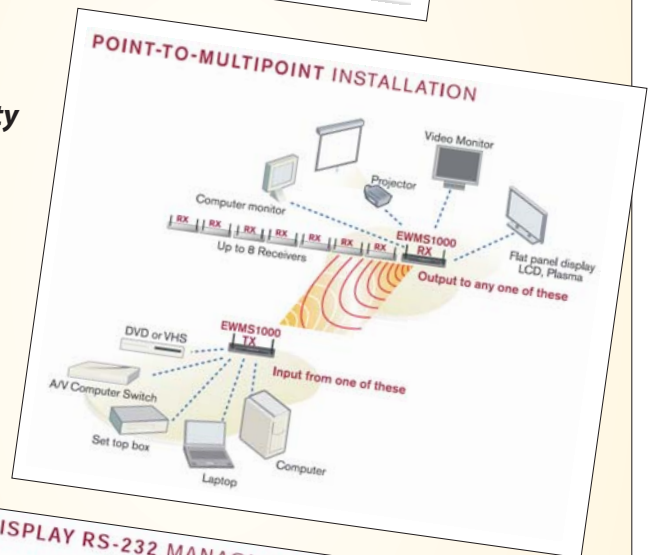
The WMS1000 wireless media streamer technology enables setup, display controls and monitoring the health of up to 8 attached display devices from a single transmitter.

High Quality MPEG2 Compression:

The WMS1000 transmits full MPEG2 D1 quality video utilizing a 100% digital transport. Combined with its proprietary communication protocol, the WMS1000 wireless media streamer guarantees smooth, secure and uninterrupted digital signage applications.



*Experience
the freedom
and flexibility
of smart
wireless
streaming
media*



LV3500W • LV4500W

LongView Wireless Extenders

Experience the freedom and flexibility of wireless A/V connectivity. The Avocent LV3500W and LV4500W LongView Wireless extenders provide connectivity between computer-based audio/video sources and display devices including LCDs, monitors, plasma displays and projection devices. They simplify A/V installations making them more cost-effective by eliminating the need for miles of cabling and expensive PCs at each remote location. Audio, video and PC content are transmitted wirelessly from the source computer to the output device utilizing a unique, proprietary compression engine. Because of their industry-standard design, the extenders are compatible with virtually any PC, display and operating system - requiring no new drivers, software or OS upgrades. Installation is easy and eliminates the expense and inflexibility of conventional hard-wiring. They also eliminate the risk associated with many wireless products because of its three levels of security which include, AES encryption, proprietary 802.11a link layer protocol, and proprietary video compression. Firmware features a user-friendly On Screen Display (OSD) for managing connectivity, making adjustments and tuning the audio/video settings.

The LongView Wireless extender transmitter and receiver process analog video inbound and outbound with a distance range that varies. The LV3500W transmits data 100' through walls and up to 300' without obstruction. The LV4500W extends transmission distance to 3000' without obstructions and supports both wall and table mount options.

FEATURES

- ◆ Wireless video with up to 30 frames per second and XGA resolution (1024 x 768).
- ◆ Transmitter connects directly to the computer making it a visual extension source - perfect for digital signage, presentation or classroom applications. The use of locally-wired monitor, keyboard and mouse is supported.
- ◆ Receiver connects directly to the output device leaving it free of unsightly cabling. Extended audio speakers as well as keyboard and mouse can be connected at the remote location if desired.
- ◆ Plug & Play Installation. No software to download or controls required.
- ◆ Comprehensive auto setup quickly determines and establishes optimal settings for content being transmitted.
- ◆ On Screen Display (OSD) menu puts adjustments into the user's hands.
- ◆ Built-in AES Advanced Encryption Standard (AES) for secure wireless connectivity.
- ◆ 802.11a radio standard operates outside of the standard WLAN frequencies for higher QoS (Quality of service), interference-free connectivity.
- ◆ Proprietary communication protocol offers security and high bandwidth for challenging installations.

LongView Wireless LV3500W

The LongView Wireless LV3500W extender, includes a wireless transmitter and receiver, power supplies and audio cables. The firmware features a user-friendly OSD for making adjustments and tuning the video settings. The LV3500W transmission ranges from 100' through walls up to 300' line-of-sight. The omnidirectional antennas enable the transmitter and receiver to locate each other even if one of them has been moved.



LongView Wireless LV4500W



The LongView Wireless LV4500W extender includes a wireless transmitter and receiver, power supplies and audio cables. The firmware features a user-friendly OSD for making adjustments and tuning the video settings. LV4500W transmission ranges from 300' through walls up to 3000' line-of-sight. Care must be used in setup to ensure that the transmitter and receiver are pointed directly at each other to take advantage of the power of the LV4500W embedded directional antennas.

LV3500W • LV4500W

Wireless A/V Applications

Video cabling is no longer required for streaming audio/video connections from the host computer to the display device. Because the connection is wireless, installation is much easier, faster and often cheaper.

At the same time, there is a great deal of added flexibility – both in placement and/or the reconfiguration of source and display device locations. The LongView Wireless extender adapts as your A/V systems evolve.

Courtrooms:

Quickly move displays, monitors or projectors for deployment when and where they are needed.

Digital Signage:

Transmit audio/video and digital data to signage displays.

Classrooms:

Configure rooms as needed from ceiling-mounted projectors or monitors on carts to wireless instructor workstations.

Houses of Worship:

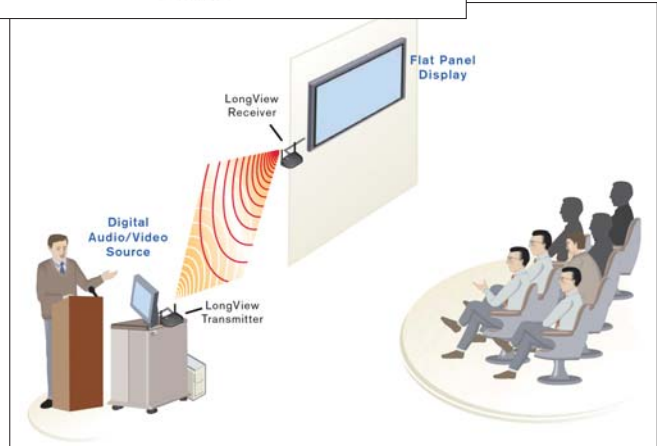
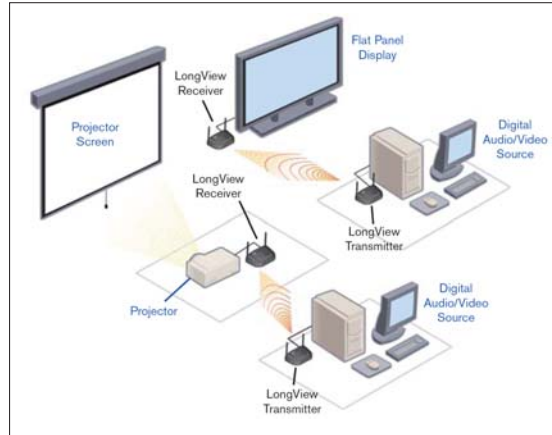
Set up your facility with display and projector placement where traditional cabling would be prohibitive.

Conference Rooms:

Enable quicker user setup cutting the tether to hard-wired presentation stations.

Auditoriums:

The LongView Wireless extender provides ultimate room flexibility and allows rapid reconfiguration of small/large venues.



LONGVIEW WIRELESS EXTENDER SPECIFICATIONS

	LV3500W	LV4500W
Video Resolution	VGA (640 x 480), SVGA (800 x 600), XGA (1024 x 768)	VGA (640 x 480), SVGA (800 x 600), XGA (1024 x 768)
Video Interface	VGA compatible analog RGB (15-pin D-shell) non-interlaced 60Hz refresh rate	
Audio Support	Analog Digital	Analog Digital
Range	300' (unobstructed)	1000' (unobstructed)
Antennas	2- 2 dbi omni directional	Hi output, 8 dbi directional internal antenna
Operating Temperature	32° (0°C) to 104° (40°C)	32° (0°C) to 104° (40°C)
Storage Temperature	-4° (-20°C) to 122° (50°C)	-4° (-20°C) to 122° (50°C)
Supported Hardware	VESA standard resolutions at 60hz refresh including: VGA (640 x 480), SVGA (800 x 600), XGA (1024 x 768 [JJ1])	
Peripherals	PS/2 keyboard, PS/2 mouse, extended speakers.	
Power	12 VDC @ 1A from supplied 100-240 VAC 50/60 Hz switching power supply	
Power Connector	2.1mm ID, 5.5mm OD, 9.5mm length barrel connector, tip positive	
Dimensions (HDW)	1.75 x 5.25 x 6.25"	6.5 x 4.5 x 2.5"
Weight	1 lb. (Transmitter and Receiver)	1 lb. (Transmitter and Receiver)