



# The Professional Photo SourceBook

## Section 6

### Loupes

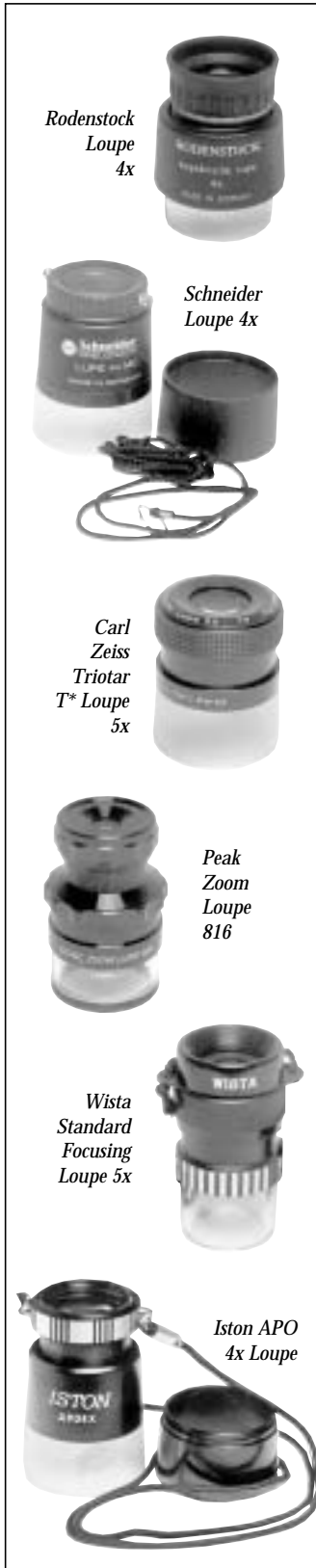
35mm, All-Purpose . . .	292, 294-299
2¼", All-Purpose . . . . .	293
Groundglass, All-Purpose . .	292, 299
All-Purpose, Misc. . . . .	292-299
Linen Testers . . . . .	299

# LOUPE S

## 35mm / ALL PURPOSE FOCUSING LOUPE S

LOUPE S

292



Rodenstock Loupe 4x

Schneider Loupe 4x

Carl Zeiss Triotar T\* Loupe 5x

Peak Zoom Loupe 816

Wista Standard Focusing Loupe 5x

Iston APO 4x Loupe

**Rodenstock Loupe 4x** (260010)  
4x magnifier. Free of visible distortion, even at the border area. Minimizes stray light even against very bright backgrounds. Built-in focusing diopter, 25mm wide eye-point with built-on rubber eye cup. Base is built with a sliding hood. Easily converts loupe from 73x52mm opaque (for viewing film) to clear (for prints or groundglass focusing). Dimensions are 2.9 x 2" (73 x 52mm). Weighs 2.8oz. (80g).  
**Item # ROL4X.....99.95**

**Schneider Loupe 4x**  
High quality multi-coated 4x magnifier with optimal image quality. 30mm wide eye-point allows less eye fatigue. Built-in focusing diopter. Bottom skirt is interchangeable for film, print and glass viewing. Dimensions are 2.7 x 1.9" (68 x 48mm). Weighs 2.4 oz. (68g).

**Black** (080-37642)  
**Item # SCL4XB.....109.00**

**Blue** (080-26073)  
**Item # SCL4XBL.....118.95**

**Gray** (080-26074)  
**Item # SCL4XG.....118.95**

**Pink** (080-26075)  
**Item # SCL4XP.....118.95**

**Schneider Aspheric Loupe 6x**  
Same as above with 6x magnification, and aspheric glass elements. Available in black color. Weighs 3.8 oz. (106g).  
**Item # SCL6XA.....254.00**

**Iston APO 4x Loupe**  
Copy of the German 4x loupe. Coated aspherical glass optics with built-in focusing diopter. Shows full 35mm slide. Includes 2 interchangeable skirts - clear for viewing prints and black for viewing slides. Metal construction. 26mm wide eye point; 2 x 2.6" (50 x 66mm). Weighs 3.5 oz. (100g).  
**Item # ISL4X.....49.95**

**Focus Extension Ring**  
For APO 4x.  
**Item # ISFERL4X.....9.95**

**Contax Triotar T\* Loupe 5x** (680-010)  
A Carl Zeiss high-performance, 2-group, 3-element 5x magnifying glass featuring a wide visual field of coverage (24x36mm). Optical glass manufactured with world famous Carl Zeiss' T\* coating. Effective viewing field of 45mm. 20mm wide eye point allows less fatigue. Built-in focusing adapter adjustable between +0.5 and -4. The lower section is designed with a sleeve interchange "Transparent Light Sleeve" for viewing prints, and the "The Shading Sleeve" for viewing slides on a light box. 2 x 22.4" (52 x 62mm). Weighs just 3.4oz (95g).  
**Item # COL5X .....179.95**

**NPC Pro Loupe 5.5x**  
5½" magnification integral black anodized aluminum loupe with an aluminum skirt that can be used in the up or down position for viewing prints or transparencies, or as a focusing aid with a view camera. 45mm effective viewing field. Dimensions are 2.2 x 2.4" (56 x 62mm). Weighs 5oz. (142g).  
**Item # NPL5.5X.....109.95**

### Kenko Precision Loupes

**Precision Loupe 4x** (PR-4X)  
Fully covers 35mm film frame. For viewing slide or negative film with adjustable focus. The 45mm base with a sliding hood, easily converts from opaque (for viewing film) to clear (for viewing prints). 1G, 2E construction. Dimensions are 2.2 x 3" (55 x 76mm). Weighs 3.9 oz. (110g).  
**Item # KELP4X .....89.95**

**Precision Loupe 6x** (PR-6X)  
Same as above with 6x magnification. Its dimensions are 2.2 x 3.1" (55 x 78mm), and it weighs 5.3 oz. (150g).  
**Item # KELP6X .....119.95**

**Peak Zoom Loupe 816** (PK2044)  
Permits stepless change of magnification for zooming. Composed of 8 lenses in 6 groups for zooming from 8x to 16x, it keeps sufficient brightness in each stage of magnification with the least optical aberration. The black body, with finished aluminum precision machining, allows smooth zooming. Click stops of desired magnification from 8x, 10x, 12x, 14x and 16x. Multi-groove screw helicoid system for diopter focus adjustment (+2.5 to -5) ensures smooth operation. Field of view zooms 20mm to 10mm. Dimensions are 1.8x2.6" (45x65mm), weight 5.3oz. (149g).  
**Item # PE2044 .....189.95**

**Wista Standard Focusing Loupe 5x** (1046)  
A powerful 5x magnifier designed for all-purpose viewing, 3-element optical glass, a built-in focusing diopter, interchangeable bottom skirts for viewing prints and for groundglass or slide viewing. With neck strap.  
**Item # WIL5X.....49.95**

### Canon Loupes

**Canon Loupe 4x** (C559351)  
High performance super spectra coated magnifier for viewing a full-size 35mm frame in high resolution. Color aberration and distortion is completely eliminated. 30mm wide-eye point allows less fatigue. Focusable from -4 to +1 diopter. Bottom skirt is interchangeable for film and print viewing. Includes 2 skirts, eyecup, eyecup with neck strap and case. Dimensions are 2 x 2.5" (53 x 63mm). Weighs 3.8oz. (180g).  
**Item # CAL4X.....129.95**

**Canon Loupe 8x** (C559361)  
Same as above with 8x magnification. 4 groups, 2 elements. Dimensions are 2 x 1.6" (51 x 41mm). Weighs 3.4 oz. (96g).  
**Item # CAL8X.....169.95**

# LOUPES

## 2 1/4" / ALL PURPOSE LOUPES

**Eschenbach Standlupe 4x** (GEB627)  
A large 4x full-frame magnifier. Aspherical acrylic lens with duplex coating gives sharp images over a 3" field of view. High eye-point allows the eye to be further away from the loupe. Great for larger slides, negatives and prints. Eye piece width has 55mm effective viewing field (66x66mm). Dimensions are 3 x 3 x 2.4" (78 x 76 x 60mm), weight only 3oz. (84g).  
**Item # ES2616.....29.95**

**Horizon 4x Stand Loupe** (GHZ104)  
This all-purpose loupe uses high resolution lenses with chromatic aberration. Wide square vision (48 x 48mm). Features both a semi-transparent and black bottom skirt for use with different lighting conditions. Includes built-in focusing diopter with a 29mm wide eye-point. Dimensions are 2 x 2 x 2.6" (54 x 54 x 65mm), weight 3.6oz. (104g).  
**Item # HOLAXVF.....39.95**

**Schneider 6x6 Magnifier** (08039816)  
High quality multicoated 4x magnifier with optimal image quality. 30mm wide eye point for less eye fatigue. Built-in focusing diopter. 56x56mm bottom skirt is interchangeable for film, print and glass viewing. Dimensions are 2.4 x 2.4 x 3.4" (60 x 60 x 86mm) Weighs 4.4 oz. (124g). With strap.  
**Item # SCL66.....224.00**  
**Hasselblad Base Plate Adapter**  
**Item # SCHAL66 .....95.95**

**Kenko Excelupe 5x** (EC5X)  
High quality all-purpose 5x magnification loupe that covers the 6x6 frame, with high eye-point. Distortion free. Adjustable focusing lens. The base is built with a translucent skirt for viewing prints or slides. Multicoated, 2G, 3E construction with a 55mm effective field of view. 2.5 x 2.7" (64 x 68mm). Weighs just 7.4 oz. (210g).  
**Item # KELE5X.....119.95**

**Rodenstock 6x6 Aspheric Magnifier** (260200)  
A high-quality aspheric 3x magnifier. Resolves even the finest details with high contrast over the entire 86mm diagonal image area. 33mm wide eye point for less eye fatigue. Built-in diopter correction from 0 to -2. Bottom skirt is reversible for film, print and glass viewing. 3 x 3x 3.9" (75 x75 x 100mm). Weighs 7.1 oz (202g).  
**Item # ROL66.....229.95**

### Peterson Viewing Lens System

**Peterson 6x6 Viewing Lens System**  
For critical viewing of reflected and transmitted light. 85mm focal length is ideal for viewing 35mm and 120mm images. Specially coated multi-element rare earth cemented achromatic lens. Unique 15mm depth of field allows the viewing lens to be tilted off axis while retaining good focus. This eliminates constant adjusting of the lens for different viewers. Clear or black skirt for viewing prints or slides. 2 1/4 and 35mm rubber masks.  
**Item # PEV66.....119.95**



**Hasselblad Attachment**  
For viewing directly onto a Hasselblad focusing screen.  
**Item # PEHA.....9.50**

**Slide Viewing Attachment**  
For viewing 35mm slides with available light.  
**Item # PESVA .....9.50**

### SPECIFICATIONS for PETERSEN MAGNIFIER

MAGNIFICATION	EYE PIECE WIDTH	EFFECTIVE VIEWING FIELD	DIMENSIONS	WEIGHT
6x	28mm	53mm	2.4x3.4" (60x87mm)	3oz. (86g)

### Kenko Precision Loupe

**Kenko Precision Loupe 3x for 6x7** (PR3X)  
A 3x magnification loupe. Fully covers 6x7 film frame. Ideal for viewing slide and negative with adjustable focus diopter. The sliding hood on the base, easily converts loupe from opaque (for viewing film) to clear (for viewing prints or for groundglass viewing).  
**Item # KELP3X.....159.95**

### SPECIFICATIONS for KENKO PRECISION LOUPE

MAGNIFICATION	3x (Precision)
LENS CONSTRUCTION	4G, 3E
EFFECTIVE VIEW FIELD	89mm
EYE PIECE WIDTH	35mm
DIMENSIONS	4.1 x 4.7" (105 x 120mm)
WEIGHT	16.8 oz (480g)



Rodenstock 6x6 Aspheric Magnifier

Horizon 4x Stand Loupe

Kenko Excelupe 5x

Schneider 6x6 Magnifier

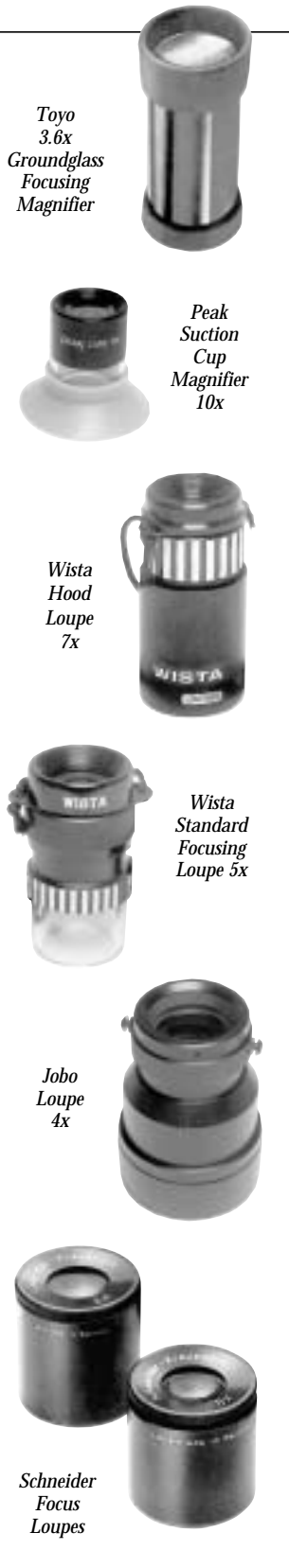
Kenko Precision Loupe 3x for 6x7

# LOUPES

## GROUNDGLASS AND ALL-PURPOSE LOUPES

LOUPES

294



Toyo  
3.6x  
Groundglass  
Focusing  
Magnifier

Peak  
Suction  
Cup  
Magnifier  
10x

Wista  
Hood  
Loupe  
7x

Wista  
Standard  
Focusing  
Loupe 5x

Jobo  
Loupe  
4x

Schneider  
Focus  
Loupes

### Focus Loupes

**Toyo 3.6x Groundglass Focusing Magnifier (180-301)**  
A powerful 3.6x magnifier with rubber base (to avoid scratching groundglass), rubber eyepiece (for eye glass wearers), coated optics and neck strap. Focal length of 60mm. Constructed of 2E, 2G glass.  
**Item # TOL.....39.95**

**Wista Standard Focusing Loupe 5x (1046)**  
A powerful 5x magnifier designed for all-purpose viewing. 3-element optical glass, a built-in focusing diopter, interchangeable bottom skirts for viewing prints and for groundglass or slide viewing. With neck strap.  
**Item # WIL5X.....49.95**

**Wista Hood Loupe 7x (1045)**  
The Wista Hood Loupe 7x is a high powered 7x magnifier designed for groundglass viewing. It can be extended almost an inch (24mm) for viewing through cameras with a folding focusing hood. 3-element optical glass and diopter focusing.  
**Item # WIL7X.....94.95**

### Schneider Focus Loupes

The Schneider focus loupes provide precise focusing of groundglass images, in studio cameras, laboratory and all-purpose use. The color corrected and multi-coated lenses enable objects to be viewed 6, 8 or 10x.

**Schneider 6x Magnifier (080-39642)**  
With strap.  
**Item # SCL6X .....159.00**

**Schneider 8x Magnifier (080-39643)**  
With strap.  
**Item # SCL8X .....174.00**

**Schneider 10x Magnifier (080-39203)**  
With strap.  
**Item # SCL10X .....244.00**

### SPECIFICATIONS for SCHNEIDER/TOYO/WISTA FOCUSING LOUPES

MAGNIFICATION	EYE PIECE WIDTH	FIELD OF VIEW	DIMENSIONS	WEIGHT
Schneider 6x	15mm	28mm	1.3x1.6" (34x40mm)	1.4oz. (40g)
Schneider 8x	15mm	28mm	1.3x1.4" (33x35mm)	1.2oz. (32g)
Schneider 10x	20mm	36mm	1.6x1.5" (41x38mm)	2.6oz. (72g)
Toyo 3.6x	29mm	29mm	1.5x3.9" (38x100mm)	2.6oz. (74g)
Wista 5x	17mm	24mm	1.4x2.2" (35x55mm)	1.8oz. (50g)
Wista 7x	17mm	32mm	1.6x3.3" (40x85mm)*	4.8oz. (136g)

\*Extends 24mm for hood viewing

### All-Purpose Loupes

**Peak Suction Cup Magnifier 10x (PK1993)**  
A 10x loupe that enables photographer to focus view cameras with two hands, with the loupe held in place on the groundglass by the suction cup. Lens diameter is 30mm, dimensions are 2.4x2" (60x51mm) and weight is 1.2oz (35g).  
**Item # PE1993.....29.95**

**Jobo Loupe 4x (3543)**  
Fully covers 35mm film frame. For viewing slide or negative film with adjustable focus. Base easily converts from opaque to clear. 1G, 2E construction. 2.2 x 3" (55 x 76mm). Weighs 3.9 oz. (110g).  
**Item # JOLAX.....65.95**

**Horizon Focusing Loupe 10x (GHZ102)**  
2-dimensional 10x magnifier. Features achromatic multicoated glass lens in aluminum construction. Base includes interchangeable opaque and clear lucite glass scale.  
**Item # HOL10X .....39.95**

**Horizon Focusing Loupe 8x (GHZ103)**  
Features high power 8x magnification achromatic glass. One inch viewing lens. Aluminum construction. Base made of rectangular lucite for clear and shadowless viewing. Etched millimeter scale.  
**Item # HOL8X .....29.95**



Horizon  
Focusing  
Loupe 8x  
(GHZ2103)

Horizon  
Focusing  
Loupe 10x  
(GHZ103)

# LOUPES

## ACHROMATIC, LIGHT GATHERING AND EYE-RELIEF LOUPES

### Kenko Excelupe and Long Eye Relief Loupes



**Kenko Excelupe 8x (EC8X)**  
High power 8x magnification. High quality with high eye point. Distortion free. Adjustable focus. Base is built with translucent skirt for viewing prints or slides.  
**Item # KELE8X.....129.95**



**Kenko Long Eye Relief 8x (LEYE)**  
High power 8x magnification. Extra long eye relief (high eye point) allows viewing subject from 11¾" (3cm). Ideal for industrial or medical use. Removable clear acrylic base.  
**Item # KELLER.....99.95**

### SPECIFICATIONS for KENKO EXCELUPE AND LONG-EYE RELIEF LOUPES

MAGNIFICATION	8x	8x (Long Eye)
LENS CONSTRUCTION	3G 4E	2G 3E
EFFECTIVE VIEWING FIELD	44mm	42mm
COATING	Multi	Multi
DIMENSIONS	2.2x2.4" (56x62mm)	2.4x2.8" (62x70mm)
WEIGHT	7oz (200g)	8.4oz (240g)

### Kenko Achromatic Loupes

These Kenko loupes incorporate a fully corrected achromatic lens design. Convenient mid-sized adjustable focus. They all have a large field-of-view to cover larger negatives. The bases are clear acrylic.

**Kenko 3x Achromatic Loupe (ACL3X)**    **Kenko 5x Achromatic Loupe (ACL5X)**    **Kenko 9x Achromatic Loupe (ACL9X)**  
**Item # KELA3X.....79.95**    **Item # KELA5X.....94.95**    **Item # KELA9X.....68.50**

### SPECIFICATIONS for KENKO ACHROMATIC LOUPES

MAGNIFICATION	3x (Achromatic)	5x (Achromatic)	9x
LENS CONSTRUCTION	2G3E	4G4E	2G 4E
EFFECTIVE VIEW FIELD	59mm	55mm	35mm
COATING	Mono	Mono	Mono
DIMENSIONS	2.8x4.3" (70x110mm)	2.8x3.5" (70x90mm)	1.9x2" (55x78mm)
WEIGHT	7.7oz (220g)	10.5oz (300g)	4.2oz. (120g)

### Peak Loupes

**Peak Loupe 15x (PK1962)**  
A high magnification all-purpose loupe with a coated achromatic 2G, 3E lens.  
**Item # PE1962 .....17.95**



**Peak Loupe 4x (PK2038)**  
High-resolution achromatic lenses with corrected chromatic aberration. 45 x 45mm wide square vision. Smart body design makes it useful as an all-purpose magnifier. Semi-transparent skirt for checking photographic films and black skirt for checking the focus of a large-focus camera. In addition, a multi-groove screw helicoid system, (ordinarily employed for camera lenses) is used for diopter adjustment, ensuring a very smooth operation. Dimensions are 2 x 2.6 x 2" (51 x 65 x 51mm). Weighs just 2.8oz. (80g).  
**Item # PE2038.....59.95**



LOUPES

295



THE PROFESSIONAL'S SOURCE (212) 444-6630 • FAX: (212) 239-7770

1 • 8 0 0 • 9 4 7 • 6 6 5 0

# LOUPES

## ALL PURPOSE, SCALE, AND ANASTIGMATIC LOUPES

LOUPES

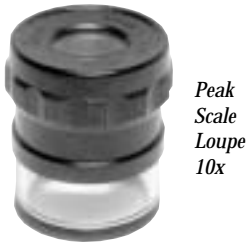
296



Peak  
Scale  
Loupe  
7x



Peak  
Mini  
Comparator  
(Scale)  
Loupe 7x



Peak  
Scale  
Loupe  
10x



Peak  
Scale  
Loupe  
15x



Peak  
Anastigmatic  
Loupe 4x



Peak  
Anastigmatic  
Loupe 7x

### All-Purpose Scale Loupes

#### Peak Scale Loupe 7x (PK1975)

An all-purpose high power 7x loupe. Excellent 2G3E achromatic lenses. With focusing diopter and printed removable scale.

Item # PE1975 ..... **38.95**

#### Peak Mini Comparator (Scale) Loupe 7x (PK2015)

Same as 7x scale loupe, but smaller and lighter.

Item # PE2015 ..... **49.95**

#### Peak Scale Loupe 10x (PK1983)

A high power precision achromatic all-purpose 10x magnifier (2G4E) with focusing diopter and printed removable scale.

Item # PE1983 ..... **59.95**

#### Peak Scale Loupe 15x (PK2016)

A wide field 15x magnifying glass with 3-groups and 4-elements. By observing through the magnifier and printed scale, the user can measure the length angle precisely, etc. This loupe can be used as an independent magnifier by removing the transparent skirt and turning the focusing diopter to the left.

Item # PE2016 ..... **79.95**

### SPECIFICATIONS for SCALE LOUPES

MODEL	1975	2015	1983	2016
MAGNIFICATION	7x	7x	10x	15x
EYE PIECE WIDTH	18mm	13mm	20mm	13mm
FIELD OF VIEW	26mm	25mm	28mm	20mm
DIMENSIONS	1.4x2.4" (36x62mm)	1.1x? (29x46mm)	1.8x1.7" (46x44mm)	1.4x1.3" (35x33mm)
WEIGHT	2oz (56g)	1oz (28g)	2.6oz. (74g)	1.4oz. (40g)

### Peak Professional Anastigmatic Loupes

Designed to allow viewers to simultaneously inspect the entire image area of a film or negative as large as 32x45mm, or flat objects up to 58mm in diameter on the 4x and 41mm on the 7x. Insures critical sharpness from edge to edge and corner to corner, due to the high degree of field and optical aberrations. Ordinary magnifiers are corrected only for the center image. The optical design of these loupes enable viewing from one inch above the eye piece, so that the entire image area may be viewed without moving one's head. Part of the barrel is constructed of clear plastic to allow for illumination of opaque objects. A smooth diopter focusing device allows for correction to the vision of individual users. A detachable glass scale is included to allow for measurement of objects directly on the film plane. Supplied with strap.

#### Peak Anastigmatic Loupe 4x (PK1990)

Item # PE1990 ..... **129.95**

#### Peak Anastigmatic Loupe 7x (PK1990-7)

Item # PE19907 ..... **129.95**

### SPECIFICATIONS for ANASTIGMATIC LOUPES

MODEL	1990	1990-7
MAGNIFICATION	4x	7x
EYE PIECE WIDTH	30mm	22mm
FIELD OF VIEW	58mm	41mm
COATING	Mono	Mono
DIMENSIONS	2.9x3" (73x77mm)	2.2x2 (55x53mm)
WEIGHT	10oz 272g)	3.6oz (103g)

# LOUPES

## MAGNIFIERS

### Stand Loupes

#### Bestwell Maxi Loupe 10x

Features quality optics 8x magnification with a 2" viewing lens, mounted in metal construction. Fully adjustable clear lucite stand.

Item # **BEML2**.....**24.95**



#### Hama Standing Magnifier 4x Round (5484)

Big magnifier with aspherical lens. Bright, distortion-free view with 4x magnification. Clear base for viewing from the top (stamps, negatives or contact prints). Its diameter size is 2 3/4" (70mm), height

2 3/4" (60mm) and weighs 2.9oz. (84g).  
Item # **HAMR4X**.....**26.50**

#### Eschenbach 3.5x Hand/Stand Pocket Magnifier (GEB050)

Multi-purpose magnifier for home or away. The stand magnifier offers perfect focus with the correct distance. It can be converted into a fixed focus stand magnifier. The aspheric PXM lightweight lens with a diameter of 60mm features a magnification factor of 3.5X and provides perfect focus at the edges. Weighs 2.6oz. (74g).

Item # **ES2050**.....**39.95**

#### Eschenbach Stand Magnifier 6x (GEB626)

6x magnification loupe used wherever work has to be done beneath a high magnification lens, and as a high magnification visual aid. Lens aspherical, PXM lightweight lens with Duplex-Coating. Transparent plastic base for clear and shadowless viewing, with rectangular cut-outs to slide film through.

Item # **ES2626**.....**26.95**

### Magnifiers

#### Peak Loupe 5x (PK1960)

A very practical magnifier with an acrylic tube. Lightweight and bright.

Item # **PE1960**.....**12.95**

#### Peak Loupe 22x (PK1964)

A high grade, powerful 22x magnifier with a coated achromatic 3G4E lens.

Item # **PE1964**.....**26.95**

#### Peak Loupe 30x (PK1996)

A simple 7mm eyepiece microscope type loupe with 4-element, 2-group construction. The image remains erect. Its dimensions are .7 x 1.4" (18 x 35mm) and it weighs just .3oz. (8g).

Item # **PE1996**.....**49.95**

#### Peak Steinheil Loupe 10x (PK198510)

With leather case. A color corrected 3-element composite, 15mm eyepiece width lens.

High resolution throughout the wide field of view. The classic high-quality high power (10x) loupe slips into a .9 x 1.4 x .8" (22 x 36 x 20mm) holder and weighs. 7oz. (20g).

Item # **PE1985**.....**69.95**

#### Beseler Loupe 8x

Professionally designed with 8x magnification, this loupe is both lightweight and pocket sized.

Item # **BEL8X**.....**6.95**

### Viewing Filters

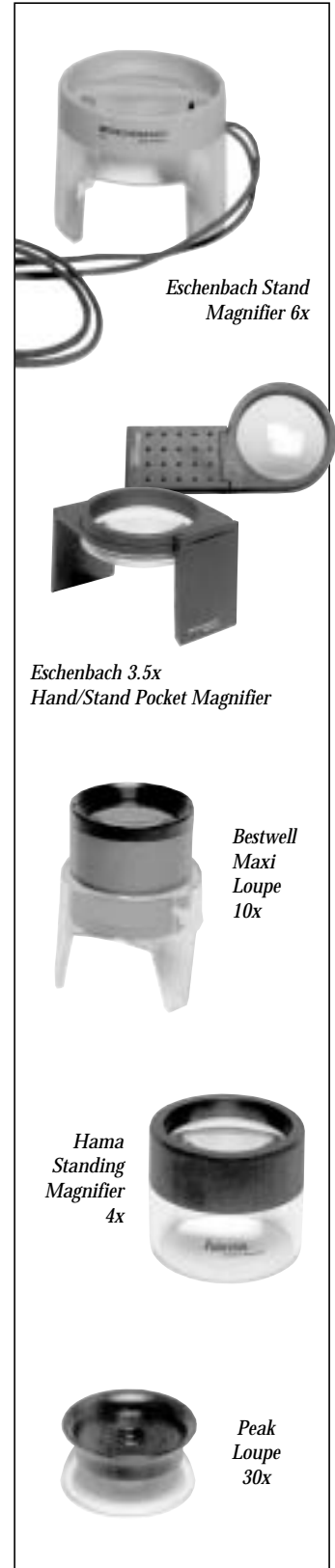
Renders tonal values as they will be reproduced by the film. Preview shadows and highlights. Folds into case. Supplied with eyelet for neck strap.

#### Peak Viewing Filter PV1F for Black & White (1967M)

Item # **PE1967M**.....**49.95**

#### Peak Viewing Filter TC1F for Color (1967C)

Item # **PE1967C**.....**49.95**



Eschenbach Stand Magnifier 6x

Eschenbach 3.5x Hand/Stand Pocket Magnifier

Bestwell Maxi Loupe 10x

Hama Standing Magnifier 4x

Peak Loupe 30x



Beseler Loupe 8x

Peak Viewing Filter PV1F for Black & White (1967M)

Peak Steinheil Loupe 10x

Peak Loupe 22x

Peak Loupe 5x

# LOUPES

## LIGHT GATHERING AND SPECIALTY LOUPES

LOUPES 298

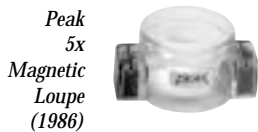


*Glasses not included*

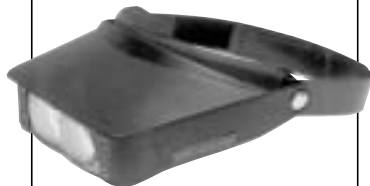
*Eschenbach  
2.5x  
Clip-On  
Stereo Magnifier (1642)*



*Iston Retouching Loupe (R10x)*



*Peak  
5x  
Magnetic  
Loupe  
(1986)*

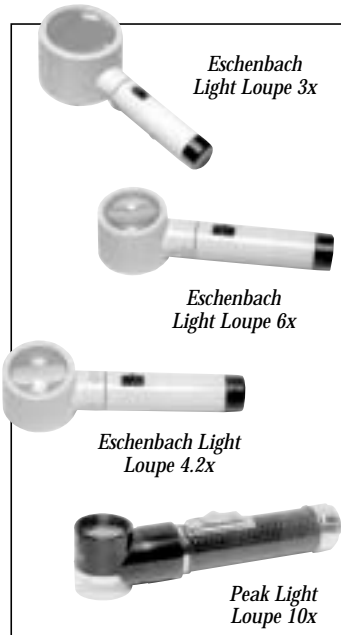


*Peak Head Loupe (2035)*



*Peak Light Loupe 10x*

### Illuminated Magnifiers



**Eschenbach Light Loupe (Leuchtlupe) 3x** (GEB527)  
For extra illumination. Features an aspherical acrylic 3x magnification biconvex lens covering almost 4". Great for 2 1/4 slides, larger prints or Polaroid shots. (Requires C batteries.)  
**Item # ES1555.....39.95**

**Eschenbach Light Loupe (Leuchtlupe) 6x** (GEB552)  
An extremely lightweight torch magnifier, the Eschenbach Light Loupe 6x features an aspherical acrylic 6x magnification covering a 2" (50mm) field. Great for 35mm contact sheets, prints, Polaroid prints, etc. (Requires C batteries.)  
**Item # ES1552.....34.95**

**Eschenbach Light Loupe (Leuchtlupe) 4.2x** (GEB525)  
Features an aspherical acrylic 4.2x magnification lens covering a 2" field. Great for 35mm, contact sheets, etc. (Requires C batteries.)  
**Item # ES1525.....39.95**

**Peak Light Loupe 10x** (PK1966)  
Designed for use when extra illumination is necessary. It offers a high power 10x magnification and wide visual field. The effective viewing field is 42mm. The flashlight is made of metal and the clear lens is shielded by a hard plastic holder. The clear base works with or without the built-in light. Operates with two C batteries.  
**Item # PE1966.....26.95**

### SPECIFICATIONS for ILLUMINATED MAGNIFIERS

MODEL NUMBER	EFFECTIVE VIEWING FIELD	BATTERY	DIMENSIONS	WEIGHT (without battery)
GEB552	62mm	2C	2.6x8.5" (67x216mm)	3.9oz. (110g)
GEB525	62mm	2C	2.6x8.5" (67x216mm)	3.7oz. (106g)
GEB527	92mm	2C	3.9x9.8" (99x250mm)	6.4oz. (182g)
PK1966	28mm	2C	1.6x6.9" (41x175mm)	3oz. (84g)

### Specialty Loupes

**Peak Head Loupe** (PK2035)  
The Peak Head Loupe is an extremely lightweight head loupe, with two varying magnifications in one device. Comes with adjustable headband. Magnification: 2.2x and 3.3x. The dimensions are 7.5 x 2.8 x 9.9" (190 x 70 x 250mm). The Head Loupe weighs 3.5oz. (100g).  
**Item # PE2035.....39.95**

**Peak 5x Magnetic Loupe** (PK1986)  
The Peak 5x Magnetic Loupe is designed for viewing metal instruments with precision. This 5x magnifier allows hands-free use. Two magnets in the base adhere to all steel. Also handy for use with cameras. Lens diameter is 30mm, dimensions are 1.7 x .8 x 12" (44 x 20 x 30mm) and weight is 1/2oz. (15g).  
**Item # PE1986.....19.95**

**Iston Retouching Loupe** (GST111)  
Features metal construction, three coated optical elements and a swing-out design which prevents the scratching of mounted 35mm slide or medium format film. Allows comfortable viewing from 12" away. A perfect companion for 4x loupe. Folds down to 2.4x1.2x1.3" (60x30x33mm) and weighs 4.2oz. (118g).  
**Item # ISL10X.....58.50**

**Eschenbach 2.5x Clip-On Stereo Magnifier** (GEB642)  
Keep your hands free for spotting prints, sorting slides, fixing cameras, etc. Gives a magnifier-to-subject working distance of about 7", and the twin lenses hinge up and out of the way when they are not needed. Features a neat clamp frame that attaches to your own eyeglasses.  
**Item # ES1642.....49.95**

Literature Available Upon Request

## GENERAL ALL-PURPOSE LOUPES & LINEN TESTERS

### Saunders Light-Gathering Magnifiers 4x

The saunders light-gathering loupe is a superbly crafted, solid acrylic magnifier that intensifies the light which passes through it, making the magnified subject clearer and brighter. Innovative optical engineering and precision lens grinding are the power behind its performance. Available in three diameters - 51mm for viewing 35mm images, stamps, coins and other small objects (weighs 2.4oz./68g); 64mm for 35mm and medium format film reading (weighs 4.7oz./134g); 90mm for medium format negatives, 4x5" film and other general applications (weighs 13.1oz./372g). All three sizes have 4x magnification and the same light intensification.

**Saunders Magnabrite Light Loupe 51mm** (175-412)  
**Item # SAM4X51 .....12.95**

**Saunders Magnabrite Light Loupe 64mm** (175-406)  
**Item # SAM4X64 .....16.95**

**Saunders Magnabrite Light Loupe 90mm** (175-401)  
 With pouch case.  
**Item # SAM4X90 .....41.95**

### General All-Purpose Loupes

**Peak Loupe 8x** (PK2018)  
 Great for 35mm camera use. This 8x magnifier is specially designed to cover the entire 24x36mm area of 35mm film frames. Most ideal for checking negatives. This high-grade magnifier has a 24x37mm angular object lens and a two-element achromatic lens in the eyepiece. The bottom part of the skirt is engraved with a 30mm long 1mm pitch scale. It can be used without obstructing the field of view. The dimensions are 1.8 x 1.9 x 1.5" (4 x 49 x 39mm), and it weighs 1.9 oz. (54g). Supplied neck strap.  
**Item # PE2018.....29.95**

**Peak Puncher and Holder** (PK2018PH)  
 A convenient accessory used with 8x loupe (#2018) for viewing mounted slides, by lifting to existing light source. Also used for long roll as a "V" puncher to the film perforation.  
**Item # PEPH2018 .....14.95**

**Peak Loupe 8x with Puncher and Holder** (PK2018WPH)  
 8x magnifier (2018) and Puncher & Holder (2018PH), as listed above.  
**Item # PE2018PH .....39.95**

**Agfa Loupe 8x**  
 Professional design 8x magnification. Lightweight and pocket size.  
**Item # AGL8X .....5.95**

**Eschenbach All-Purpose Loupe 8x** (GEB153)  
 Affordable 8x aplanatic loupe with field diameter of about an inch, mounted in a transparent skirt.  
**Item # ES1153 .....14.95**

**Peak Loupe 10x** (PK1961)  
 A moderately priced, all-purpose magnifier with a wide visual field. The effective viewing field is 42mm. The Peak Loupe 10x is also available as a light loupe (#1966), or as a suction cup loupe (#1993). Dimensions are 1.7 x 1.6" (44 x 40mm). Weighs .7 oz. (18g)  
**Item # PE1961 .....19.95**

### Linen Testers

**Iston Mini Linen Tester** (GST125)  
 The Iston Mini Linen Tester is a small, compact 10x linen tester. Black color, metal construction. It is ideal for small coins, etc. It folds down to 35 x 22 x 10mm and weighs 1/2oz. (18g).  
**Item # ISLT10X .....17.95**



*Iston Mini Linen Tester*

**Peak Linen Tester 6x** (PK1006SA3)  
 The Peak Linen Tester is a black colored 6x powered folding aluminum loupe with one optical lens element. The base size is 1" (25mm). It weighs 1.5 oz. (43g).  
**Item # PE1006SA3 .....19.95**



*Peak Linen Tester 6x*

**Horizon 4x Linen Tester** (GHZ101)  
 The Horizon 4x power folding aluminum loupe, has an effective viewing field of 1.2x1.2" (31x31mm) with an eyepiece width of 25mm. Folded size is 1.8x2.2x.6" (45x57x15mm), weight 1.3oz. (38g).  
**Item # HOLAXFF .....19.95**

**Eschenbach 5x Jumbo Linen Tester** (GEB270)  
 Traditional linen tester that folds down flat to 2x1/2" (50x15mm) and weighs just .7oz. (20g) for easy carrying. Provides 1 1/4x1 1/4" field with scale marks on two edges.  
**Item # ES1270 .....19.50**



*Saunders Magnabrite Light Loupe 64mm*



*Agfa Loupe 8x*



*Peak Loupe 8x*



*Eschenbach All-Purpose Loupe 8x*



*Peak Loupe 10x*



*Horizon 4x Linen Tester*