



The Digital Photography

SourceBook

Section 5

Computer Imaging

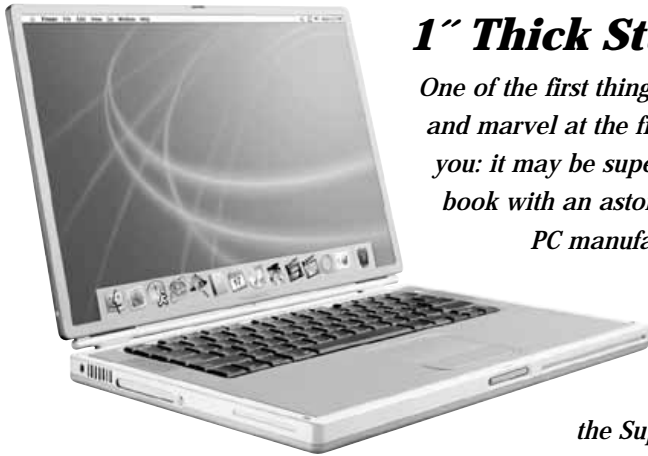
Apple Computer	438-441
Computer Monitors.....	442-445
Storage	446-449
Graphics Tablets	450-451
Software Plug-ins	452-477

Due to the fast-changing nature of the computer industry, we urge you to call us or go online to verify the latest versions, prices and OS compatibility.

All information listed here is based on manufacturer's information at the time of printing (Sept '02).

APPLE

POWERBOOK G4



1" Thick Studio that Travels With You

One of the first things you notice about the PowerBook G4— after you admire the looks, and marvel at the fit and finish — is the number of ports it has. And that's when it hits you: it may be superslim and ultralight, but it also happens to be a full-featured notebook with an astonishing lineup of built-in professional capabilities. And unlike some PC manufacturers who ship lightweight PC notebooks that shed pounds by shedding functionality, Apple makes no compromises. Available in three sizes, PowerBook G4 models feature optical drives — the legendary SuperDrive (DVD-R/CD-RW) on the 15- and 17" models, and the DVD-ROM/CD-RW Combo drive (upgradeable to the SuperDrive) on the 12" model.

- ◆ All feature FireWire and USB, with an additional FireWire 800 port on the 17"
- ◆ All feature S-Video output for connecting to a TV or projector
- ◆ Connect the PowerBook G4 to a PC network or a Windows PC (and to most USB printers and scanners, as well as Firewire digital cameras, camcorders and external drives). Share .doc, pdf, jpg, gif, tiff, MPEG, Windows Media, QuickTime, MP3, MIDI and CD files with PC users.
- ◆ 56K modem is standard, while Bluetooth (wireless connectivity) is built into the 12- and 17" models and is available as an option for the 15" model.
- ◆ The 15- and 17" come with Gigabit Ethernet (10/100BASE-T Fast Ethernet on the 12" model).
- ◆ Supplied lithium-ion battery powers them for up to 5 hours depending on system configuration and usage.
- ◆ Housed in a lightweight and durable aluminum alloy enclosure, the 12- and 17" are resistant to stains and scratches. They also have a drop-dead gorgeous design — perfectly smooth on all surfaces, with no doors, protruding latches or levers to break, no external buttons to accidentally press, and no sharp edges to catch on your clothes.
- ◆ The 15" is encased in titanium, the exceptionally strong and exceptionally light metal used in supersonic aircraft engines.

POWERBOOK CONFIGURATIONS

Order no.	M8760LL/A	M8858LL/A	M8859LL/A	M8793LL/A
Processor	867MHz PowerPC G4	867MHz PowerPC G4	1GHz PowerPC G4	1GHz PowerPC G4
Cache	256K SRAM Level 2 cache	256K SRAM Level 2 cache, 1MB DDR SRAM Level 3 cache		
Memory	256MB PC2100 DDR SDRAM	256MB PC133 SDRAM	512MB PC133 SDRAM	512MB PC2700 DDR SDRAM
Display (Diagonal)	12.1", 1024x768, TFT XGA	15.2", 1280x854, TFT	15.2", 1280x854, TFT	17", 1440x900, TFT widescreen
Graphics	NVIDIA GeForce4 420 Go with 32MB of DDR SDRAM	ATI Mobility Radeon 9000 with 32MB of DDR SDRAM	ATI Mobility Radeon 9000 with 64MB of DDR SDRAM	NVIDIA GeForce4 440 Go with 64MB of DDR SDRAM
Hard Disk Drive	40GB Ultra ATA/100	40GB Ultra ATA/66	60GB Ultra ATA/66	60GB Ultra ATA/100
Optical Drive	Slot-loading Combo (DVD-ROM/CD-RW)	Slot-loading Combo (DVD-ROM/CD-RW)	Slot-loading SuperDrive (DVD-R/CD-RW)	Slot-loading SuperDrive (DVD-R/CD-RW)
Ethernet	Built-in 10/100BASE-T	Built-in 10/100/1000BASE-T (Gigabit)		
Modem	Built-in 56K V.92 modem	Built-in 56K V.92 modem	Built-in 56K V.92 modem	Built-in 56K V.92 modem
Wireless Networking	Built-in Bluetooth 1.1; AirPort Extreme ready	Optional Bluetooth 1.1 adapter; AirPort ready	Optional Bluetooth 1.1 adapter; built-in AirPort Card	Built-in Bluetooth 1.1; built-in AirPort Extreme card
System Software	Mac OS X v10.2 Jaguar	Mac OS X v10.2 Jaguar	Mac OS X v10.2 Jaguar	Mac OS X v10.2 Jaguar
Software	QuickTime, iCal, iChat, iMovie, iPhoto, iTunes, iDVD (requires SuperDrive), DVD Player, Mac OS X Mail, Microsoft Internet Explorer, EarthLink (includes 30 days of free service), Acrobat Reader, Art Directors Toolkit, FAXstf, FileMaker Pro Trial, GraphicConverter, Microsoft Office v. X Test Drive (12-inch and 17-inch models), OmniGraffle, OmniOutliner, QuickBooks for Mac New User Edition, Developer Tools, Apple Hardware Test			
Video Accessories	Apple Video Adapter and Apple VGA Display Adapter	Apple DVI to VGA Adapter and S-Video to Composite Adapter		
Hardware Accessories	Modem cable, power adapter, AC wall plug, power cord.			



1GHz 17-inch iMac

The 17" iMac dazzles with its brilliant 17" widescreen flat-panel display that glides through the air, allowing you to adjust its height, depth or angle with just a touch of your finger. But what's more amazing is its compact base which packs a powerful 1GHz PowerPC G4 processor with Velocity Engine, 256MB of PC2100 (266MHz) Double Data Rate (DDR) main memory (expandable to 1GB), GeForce4 MX graphics with 64MB of DDR graphics memory and an Ultra-ATA/100 80GB hard disk spinning at 7200 rpm. You also get AirPort Extreme and Bluetooth wireless capability, and the best-of-breed digital lifestyle applications that have convinced so many PC users to switch to the Mac platform.

FEATURES

iLife—it all connects

Bundled with the iMac is a host of iLife software applications including iTunes, iPhoto, iMovie and iDVD. They let you be creative with your pictures, music and movies— and share them—in ways that PC users can only dream about. And whether you're creating your own music CDs, editing digital video, or authoring DVDs, you can do all without thumbing through a manual.

SuperDrive

The 17" iMac is equipped with the SuperDrive (DVD-R/CD-RW) allowing you to burn audio and video on a DVD disc that plays in almost any standard DVD player. Even better, the SuperDrive burns DVDs at 4x speed, twice as fast as before.

54 Mbps AirPort Extreme

Say goodbye to having to set up your computer near a phone. Pop the AirPort Extreme Card into the 17-inch iMac, and you're ready for wireless networking from anywhere in your home or dorm — up to 150-feet from an AirPort Extreme Base Station.

Sync with Bluetooth

The 17-inch iMac can be custom-configured with an internal Bluetooth module to connect your digital devices wirelessly. Operating within a 30-foot radius, it enables wireless data transfers between a rapidly growing list of Bluetooth-enabled products. Using iSync, for instance, you can use Bluetooth to synchronize your personal information between your iMac, your mobile phone and your Palm OS-based handheld.

Extreme Graphics

The 17" iMac has an NVIDIA GeForce4 MX graphics processor with 64MB of DDR RAM. The NVIDIA GeForce4 MX delivers 1.1 billion textured pixels per second. And since the graphics processors feature dedicated RAM — unlike some PC graphics cards that share main memory — they take over the transform and lighting calculation functions from the iMac's central processing unit (CPU), freeing the PowerPC G4 to perform essential system tasks faster than ever before.

Space-Saving Design

When developing the iMac, Apple used a rigorous design approach that optimized every available bit of space—and no wasted corners. Starting with a custom-designed circular logic board that fills the entire diameter of the base, Apple engineered enough space to fit in the full-height SuperDrive. On top of the optical drive are a high-capacity 3.5" hard disk drive and even the power supply — a split design that tucks neatly into the top of the base.

Speakers and Audio

Includes Apple Pro Speakers that handle 18 watts of undistorted digital sound. And since the iMac also provides power to the speakers, you don't need an additional power brick. The result? Reduced cable clutter. Features an internal speaker, internal tripath digital amplifier, Apple Pro Speaker jack, headphone jack, and an audio line-in jack that lets you use it as a sound editing studio.

iBook

The Most Affordable Mac Notebook Ever

Perfect for everything from homework to playing games, and from watching DVD movies to burning your own music CDs. With its extra long battery life, compact size and ultralight weight, the 4.9-pound iBook can accompany you everywhere. And with a choice of 12.1" or 14.1" displays, 800MHz or 900MHz PowerPC G3 processors, 30GB or 40GB hard drives, 128MB or 256MB of RAM expandable to 640MB — plus optional AirPort (802.11b) wireless networking and FireWire, USB and ethernet ports — the iBook gives you world-class performance in a slim, stunning design.



APPLE

POWER MAC G5

COMPUTER IMAGING

440



64-bit Supercomputer for Digital Imaging

The world's fastest personal computers and the first with a 64-bit processor — which means they break the 4 GB barrier and can use up to 8 GB of main memory. Apples new G5 line combines rock solid engineering reflective of the full-throttle Xserve architecture with new technologies for massively enhanced output and connectivity. Available at speeds up to dual 2GHz with a new ultra-high bandwidth system architecture featuring AGP 8X and PCI-X these turbocharged Power Mac rips through digital video and audio projects faster than Pentiums can say “uncle”.

Jointly developed by Apple and IBM, the 64-bit PowerPC G5 processor supports up to 8GB of 400MHz, 128-bit DDR SDRAM — four times more than a typical PC. More main memory and fast 6.4 GBps throughput means you can write large projects to memory 40x faster than to a hard disk.

Available in three powerful configurations — 1.6GHz, 1.8GHz and a dual 2GHz model, they each feature the legendary 4X SuperDrive (DVD-R/CD-RW), three PCI-X slots, one FireWire 800 and two FireWire 400 ports, three USB 2.0 ports (plus two USB 1.1 ports on the keyboard), ADC connector, DVI connector, analog audio I/O, optical S/PDIF I/O,

front headphone and speaker jack and built-in Gigabit Ethernet — as standard. In addition, all are AirPort Extreme-ready, and offer Bluetooth capability as a build-to-order option. Finally, each Power Mac G5 is supported by Mac OS X's robust foundation, which features multithreading and symmetric multiprocessing for an additional performance boost.

FEATURES

Exceptional Performance

- ◆ The latest in PCI technology, the PCI-X protocol is perfect for high-performance PCI devices, increasing speeds from 33MHz to 133MHz and throughput from 266MBps to 2GBps.
- ◆ Gigabit Ethernet, FireWire, USB 2.0 and optical digital and analog audio are all integrated through two bidirectional 16-bit, 800MHz HyperTransport interconnects for a maximum throughput of 3.2GB per second.
- ◆ Ultra-high bandwidth system architecture features a 1GHz frontside bus — one on each processor — for maximum throughput. And a point-to-point system controller lets data move directly between subsystems, without affecting processor function.
- ◆ Designed for whisper-quiet operation, the Power Mac G5's enclosure houses four discrete thermal zones to compartmentalize the primary heat-producing components. Fans in the zones spin at very low speeds resulting in a system three times quieter than the Power Mac G4.

Digital cameras are revolutionizing the way we take pictures. Now, Apple provides the missing link to revolutionize the way we save, organize, share and enjoy them. You can do more with your digital pictures using iPhoto, the cool software application in the easy-to-use tradition of iTunes, iMovie and iDVD. And with iPhoto 1.1 there are even more features for you to use.

iPhoto



- ◆ iPhoto lets you import your pictures from your digital camera, organize them, edit and improve them, and share them in a number of different ways. And once you see what iPhoto can do with digital pictures, you may never go back to using a film camera again.
- ◆ Just plug your camera into Mac's USB port and iPhoto automatically imports your photos, catalogs them, stores them and displays them on your screen. Drag your mouse, and iPhoto magically grows or shrinks your photo thumbnails right before your eyes. So you can view individual shots in greater detail for precise cropping. Or see hundreds of photos on the screen at once, and quickly scroll through thousands to find the one you're looking for. No more scavenger hunts to find pictures on your hard drive.



For Any Inquiries Regarding Your Order, Call Our Customer Service:
(800) 221-5743 • (212) 239-7765 • FAX: (800) 947-2215 • (212) 239-7549

POWER MAC G5

64-bit Performance

The PowerPC architecture was designed from the beginning to run both 32-bit and 64-bit application code, offering seamless transition to 64-bit performance. Current 32-bit code — such as Mac OS X, the Mac OS 9 Classic environment and existing applications — runs natively at processor speed. With no interruptions to your workflow. And no additional investment in software required.

Graphics and Display Support

- ◆ Compared with the AGP 4X interface, the Power Mac G5's AGP 8X Pro graphics bus effectively doubles the maximum transfer rate and doubles the amount of data transferred in a single AGP bus cycle. The 66MHz AGP 8X Pro bus strobes eight times per clock cycle, achieving a 533MHz data rate and a maximum bandwidth of 2.1GB per second — ideal for the ultrafast ATI Radeon 9800 Pro or NVIDIA GeForce FX 5200 Ultra graphics cards they include.
- ◆ Supports 1920 x 1200 pixel digital resolutions and 1600 x 1200 analog resolutions
- ◆ ADC and DVI connectors; DVI to VGA adapter included
- ◆ Dual display support for extended desktop and video mirroring modes
- ◆ Support for two Apple flat panel displays

Storage and Expansion

- ◆ Two Serial ATA controllers supporting up to 150-Mbps data throughput per hard drive
- ◆ Two 3.5-inch hard drive expansion bays with drive guides for a second drive
 - One 80GB or 160GB 7200-rpm Serial ATA drive installed in standard configurations
 - Support for up to two internal Serial ATA drives; 500GB maximum system capacity
 - 8MB memory buffers on all hard drives
- ◆ Optical drive bay with SuperDrive (DVD-R/CD-RW) installed; writes DVD-R discs at up to 4x, reads DVDs at up to 8x, writes CD-R discs at up to 16x and CD-RW discs at up to 10x, reads CDs at up to 32x speed
- ◆ One of the following PCI expansion configurations: Three open full-length 64-bit, 33MHz PCI slots, or one open full-length 64-bit, 133MHz PCI-X slot and two open full-length 64-bit 100MHz PCI-X slots.

The power of UNIX and the elegant simplicity of Macintosh

Work and play with the most advanced operating system on the planet. Mac OS X Jaguar gives you technology such as preemptive multitasking, symmetric multiprocessing and multithreading to take advantage of dual processors. Beyond that, Quartz Extreme routes graphics tasks to the processor on your graphics card, freeing the dual PowerPC G4 chips to crunch more data. Plus there's a whole host of new software to simplify your digital life and make you more productive. For example, PixelNance:

- ◆ PixelNance is real-time image enhancement software from Caffeine Software. PixelNance lets you quickly and easily determine the best image adjustment settings for your digital images. Your image appears in a unique split-screen window with the original settings on one side, and your current settings on the other.
- ◆ Enhance brightness and contrast, color saturation, tone saturation, sharpness and noise reduction. You can horizontally, vertically, or diagonally move, as well as rotate, the dividing bar that separates the two regions. And as you adjust the settings in the Controls window, the effects are immediately visible on the image.

DVD-R/CD-RW SuperDrive

The SuperDrive, standard on all models, comes with the software needed to create your own DVDs — faster than ever before. With iDVD preinstalled and with optional DVD Studio Pro software, the G5 is a complete DVD production studio. And it's the fastest on the planet, too. And if you want to watch a DVD while your work is burning, or archive material at the same time, all Power Mac G5s offer a second optical bay. Choose a combo DVD/CD-RW to fill it up.

- Read and burn both CDs and DVDs that can be played in most consumer DVD players.
- SuperDrive (DVD-R/CD-RW) reads DVD titles at 8x and writes to 4.7GB DVD-R discs at 4x.
- Also reads CDs at 32x, writes to CD-R at 16x, and writes to CD-RW at 10x.
- It supports DVD-Video, DVD-ROM and DVD-R, as well as CD-ROM, CD-Audio, CD-R, CD-RW, CDI, CD Bridge, CD Extended, CD Mixed Mode and Photo CD.

Power Mac G5 Specifications:

Model Number	M9020LL/A	M9031LL/A	M9032LL/A
G5 Processor	1.6 GHz	1.8 GHz	Dual 2GHz
L2 Cache (per processor)	512K	512K	512K
Frontside Bus	800MHz	900MHz	1GHz per processor
Main Memory (DDR SDRAM)	256MB PC2700 (333MHz) 4GB maximum	512MB PC3200 (400MHz) 8GB maximum	512MB PC3200 (400MHz) 8GB maximum
Ultra ATA/100 Hard Drive	80GB (7200 rpm)	160GB (7200 rpm)	160GB (7200 rpm)
Optical Drive	SuperDrive DVD-R/CD-RW	SuperDrive DVD-R/CD-RW	SuperDrive DVD-R/CD-RW
Graphics Support	NVIDIA GeForce FX 5200 w/64MB of DDR SDRAM	NVIDIA GeForce FX 5200 w/64MB of DDR SDRAM	ATI Radeon 9600 Pro w/64MB of DDR SDRAM
High Performance I/O	One FireWire 800 port, two FireWire 400 ports (one on front) three USB 2.0 ports (one on front), two USB 1.1 ports (on keyboard), AGP 8X Pro slot with graphics card installed, ADC and DVI connectors for dual display support.		
Audio	Optical digital audio I/O, analog audio I/O, front headphone minijack, speaker		
Networking	Built-in 10/100/1000BASE-T Ethernet and 56K modem; AirPort ready		

Each includes Apple keyboard and mouse, DVI to VGA adapter, AirPort antenna; Mac OS X v10.2 "Jaguar", iLife (iMovie, iPhoto, iTunes, iDVD), QuickBooks for Mac, FAXstf, Art Directors Toolkit, Microsoft Office v.X Test Drive, FileMaker Pro Trial, OmniGraffle, OmniOutliner, GraphicConverter, QuickTime, iChat, Safari, Sherlock, Address Book, iCal, iSync, DVD Player, Mail, Acrobat Reader, Classic environment & Apple Developer Tools.

APPLE

FLAT-PANEL DISPLAYS

COMPUTER IMAGING

442

17", 20" and 23" Digital Flat-Panel Displays

An Apple display is an essential component of the Power Mac G4 user experience. Apple offers a lineup of pure-digital flat-panel displays that provide superior image quality and vivid color. The level of integration and the elegance of these displays present Power Mac G4 users with the best possible window on their work.

All Apple displays deliver the benefits of thin and light LCD technology, with twice the brightness, twice the sharpness, and twice the contrast of a standard CRT display. They can be calibrated for color-managed workflow environments and maintain consistent color and quality without requiring frequent recalibrations. Apple displays feature an adjustable base that allows users to adjust the viewing angle effortlessly. And since dual display capabilities are built into every Power Mac G4, it is easier and more cost-effective than ever to add a second display.



- ◆ With razor-sharp images, deeply saturated colors and brilliant screens, these best-of-class displays offer 16.7 million colors, a wide viewing angle (170° horizontal and vertical), incredible color fidelity, and an ultrafast pixel response you'll love when working with audio applications— to say nothing of elegant industrial design.
- ◆ Set up is a snap, thanks to the Apple Display Connector (ADC). A single cable carries the digital graphics, power, and USB signals to the display, dramatically reducing the number of cables you have to deal with. Built-in, two-port USB hub (discreetly positioned in the back of the displays) lets you connect peripherals.
- ◆ Twice the brightness, twice the sharpness, and twice the contrast ratio of the typical CRT display. And unlike other flat panel displays, they are designed with a pure digital interface to deliver distortion-free images that never need adjusting.
- ◆ The 17" Apple Studio Display with 1280-by-1024-pixel resolution, is an ideal alternative to a large CRT display
- ◆ The 20" Apple Cinema Display features 1680 x 1050 pixel resolution for display of application palettes. Widescreen format for simultaneous display of two full pages of text and graphics, or full-screen DVD and QT movies
- ◆ The 23" Apple Cinema HD Display provides unparalleled image quality and richly saturated color. Full high-definition resolution of 1920 x 1200 pixels for display of high definition (HD) still and video imagery. Even with such a wide viewing space, text remains sharp and colors are vivid and distortion free from edge to edge. The Cinema HD Display is perfect for enhancing large graphics—enabling high-performance image manipulation in gorgeous, richly saturated, flicker-free color.

FLAT PANEL DISPLAY SPECIFICATIONS

	Apple Studio Display	Apple Cinema Display	Apple Cinema HD Display
Model	M7649ZM/B	M8893ZM/A	M8537ZM/A
Screen Size and Type	17-inch (viewable) active-matrix LCD	20-inch (viewable) active-matrix LCD	23-inch (viewable) active-matrix LCD
Maximum Resolution	1280 by 1024 pixels	1680 by 1050 pixels	1920 by 1200 pixels
Viewing Angle	170° horizontal; 170° vertical	170° horizontal; 170° vertical	170° horizontal; 170° vertical
Color Support	16.7 million colors	16.7 million colors	16.7 million colors
Input/Output ports	Apple Display Connector; two-port, self-powered USB hub	Apple Display Connector; two-port, self-powered USB hub	Apple Display Connector; two-port, self-powered USB hub
Agency Approvals	ENERGY STAR, TCO 95	ENERGY STAR, TCO 95	ENERGY STAR, TCO 95



Photon 18blue

Based on LCD technology, the photon 18blue features constant light, rather than decaying phosphor lit by intermittent electron beams as found in CRTs. Constant light output minimizes eye strain, as it reduces flicker and loss of light perceived by the user's eye. The hood reduces undesirable reflection and shadow to a minimum. Wide Viewing Angle technology allows you to see accurate color from virtually any angle –sides, top or bottom – without image distortions.

Electron 19blue III & 22blue III

Lacie's award-winning electronblue monitors are dedicated to the digital content creation professional and designed for state-of-the-art resolution and color control, providing the best quality and value. They are equipped with the most advanced Natural Flat Aperture Grille technology for a geometrically perfect picture with even less reflection. They feature a unique dark blue casing, non-glare tube and color-enhancing blue hood (black inside) to ensure consistent lighting conditions throughout the day. And with four USB ports, one upstream and three downstream, they let you easily connect keyboards, mice and other USB peripherals.



	photon18 blue	electron19 blue II	electron22 blue II
Tube Size	n/a	19"	22"
Viewable Area	18.1"	18"	20"
Dot Pitch	0.28 mm	0.25mm/0.27mm	0.24mm
Technology	LCD (liquid crystal display); TFT (thin film transistor)	Diamontron Natural Flat aperture grille	Diamontron Natural Flat aperture grille
Max. Resolution	1280x1024 @ 75Hz	1600 x 1200 @ 76Hz	2048 x 1536 @ 80Hz
Horizontal Scan Range	24kHz - 80kHz	30kHz-108kHz	31kHz-121kHz
Vertical Scan Range	56.2Hz - 75Hz	50Hz-160Hz	50Hz-160Hz
Digital Controls	-	yes	yes
System requirements	Mac and PC plug & play	Mac and PC plug & play	Mac and PC plug & play
Power Management	Energy Star	DPMS, EnergyStar, Nutek	DPMS, EnergyStar, Nutek
Connectors	Analog VGA 15-pin D-Sub, DVI-I & DVI to ADC connector for Mac G4s	1 HD-15 (VGA)	4 USB (1 up, 3 down) 2 HD-15 (VGA)
Package Includes	color-enhancing blue hood	color-enhancing blue hood	color-enhancing blue hood
Dimensions (HxWxD)	18.1x17.9x10.3"	17.4" x 17.7" x 17.5"	19.5" x 19.4" x 18.6"
Weight	24 lbs (with stand and hood)	55 lbs.	67 lbs.
Warranty	3 years	3 years	3 years

Optional blue eye calibrator for the electronblue Series

The blue eye carries out hardware calibration through a unique video cable that allows a two-way flux between the Macintosh and the LaCie monitor. This specific connection enables the monitor and the CPU to exchange information, allowing individual calibration of the red, green and blue guns inside the monitor. The blue eye first adjusts each of the electron's guns individually until they reach an optimum setting. It then creates a ColorSync profile which can be used in all ColorSync-compatible applications. The hardware calibration process, coupled with the effects of the hood and non-reflective casing, guarantees the most accurate and consistent colors, as well as the widest dynamic range on the monitor.

COLORVISION

SPYDERPRO WITH OPTICAL

COMPUTER IMAGING

444

Color Management System

In today's digital darkroom, even brand new monitors need calibration on a regular basis. Monitor calibration controls your display's color so that it is accurate and consistent from day-to-day and image-to-image. The acclaimed SpyderPRO with OptiCAL combines the award-winning Spyder - an all-digital, seven-filter colorimeter that works with both CRT and LCD monitors with the industry's premiere monitor calibration software - OptiCAL. The SpyderPRO with OptiCAL calibrates your monitor to a universal standard for color and automatically creates a correct monitor profile. The end result - a monitor that displays accurate color and lets you trust what you see on your screen.

- ◆ SpyderPRO with OptiCAL delivers precise, repeatable results in a few easy steps. First, a unique pre-calibration function allows you to balance your monitor's RGB guns giving you the widest color gamut the monitor is capable of producing. Next select a target for gamma and color temperature, attach the Spyder to the face of your monitor, and click the "Calibrate" button. OptiCAL does the rest!
- ◆ SpyderPRO with OptiCAL also includes a portfolio of advanced tools for adjusting calibration parameters for a single monitor or calibrating multiple monitors to a common standard. These tools include a wide choice of gamma and color temperature targets, curve manipulation, precision and expert control modes, information windows, and monitor focus, geometry and uniformity checking utilities.
- ◆ A calibrated monitor is the cornerstone of the digital darkroom. SpyderPRO with OptiCAL addresses this need by providing accurate, reliable, and consistent color from day-to-day, image-to-image, and monitor-to-monitor. With today's soft proofing techniques, the SpyderPRO with OptiCAL, lets you trust what you see on your screen.



You're a professional photographer with several SLRs, a collection of glass, a studio lighting system, and at least one high-resolution digital camera. You've been experimenting with digital photography and know its time to really get involved. You make your living doing shoots and selling prints; or someday you want to. You have at least one computer you use for all your business applications and may have recently purchased another one just for digital imaging. You can navigate your way around Photoshop pretty well and like reading articles so you can use it better. You have at least one photo-realistic printer in your studio, perhaps a more expensive wide format one too. The idea of calibrating your monitor makes sense to you. Gadgets don't scare you, in fact they are kind of cool. You understand what the word "calibrate" means and really like the idea of getting control of color in your digital darkroom. You like control, accuracy, and precision and especially the tools - both hardware and software - that give you these. Color management doesn't scare you. It goes with the territory. Accurate color is not a luxury, it is fundamental to your success.

SPYDERPRO & PRINTFIX

Now get digital prints that match what you see on your monitor

Tired of time consuming, trial and error monitor-to-printer color proofs?

Have you been wasting time, paper, and ink searching for that perfect combination of settings for your printer. SpyderPRO and PrintFIX gives you professional results

right away. This bundle allows you to calibrate your monitor with the highly acclaimed SpyderPRO with OptiCAL. It also includes PrintFIX - a new and novel solution that enables you to produce pro quality prints. The end result - a high quality print that matches what you see on your monitor - on any ink jet printer.



ONE HOUR FREE PARKING

AT 349 W. 34th STREET (with purchase of \$100 or more)

COLORVISION

SPYDERMASTER SUITE SPECTRO

The Total Solution for Professional Monitor and Printer Calibration

If you're serious about your prints, the Master Suite Spectro has all the tools you need for professional level digital color control - monitor calibration, outstanding spectro-built printer profiles, and sophisticated profile editing. For the professional that demands the highest quality digital color control for both display and output. Use the SpyderPro with OptiCAL™ to calibrate your CRT or LCD monitor. Use ProfilerPRO with Colorvision's spectrorcolorimeter to build high-quality printer profiles right inside Photoshop. Use DoctorPRO to edit your profiles using the full Photoshop toolset for color manipulation.

The ColorVision patch reader is a patented, LED-based spectrorcolorimeter that precisely measures their calibration targets and saves the data in Lab format. Its rugged design uses one button operation and works in conjunction with ProfilerPRO. Long in demand as a stand-alone product, ProfilerPRO has been upgraded to create incredibly good profiles with a new, convenient 125 patch calibration target. ProfilerPRO works in 4 steps: Load the 125 patch calibration chart; print it; measure it with the spectrorcolorimeter; and build the profile from the text file. Unless you choose to control advanced features in your profile, that's all you need to do. For more advanced profile editing, the DoctorPRO plug-in can be used to edit your profiles with virtually all of the Photoshop global editing tools. Functioning entirely within Photoshop, ProfilerPRO and DoctorPRO give you with the fastest way to profile inkjets, color lasers, photo lab printers and RIPs.

MONACO EZCOLOR2



Color Calibration Software

MonacoEZcolor 2 is the quickest and easiest way for anyone to control color. This award-winning software builds ICC monitor, scanner, and printer profiles that bring accurate and consistent color across devices and paper types. Put an end to trial and error color corrections and wasted ink and paper by ensuring your devices deliver the color you want. With enhanced accuracy and control, graphic designers, professional photographers, creative professionals, and photo enthusiasts will agree that

MonacoEZcolor is the premier color management solution for the entire creative community!

- ◆ Builds ICC profiles for your monitor, scanner, and printer.
- ◆ Provides improved color quality for more accurate and consistent profiles.
- ◆ Includes Monaco Expansion Tables—patent-pending technology to enable profiling of some printers that use pigment-based inks
- ◆ Provides output profile editing with powerful tools to adjust saturation, color balance, lightness, and contrast.
- ◆ Guides user through profiling with an intuitive, wizard-like interface; profile an entire workflow in 10 minutes!
- ◆ Includes 3 settings for black generation to provide control over shadow detail
- ◆ Updated interface offers improved cropping tools and expanded online context-sensitive help.
- ◆ Can profile transparency scanners with a 35mm or 4x5 transmissive IT8 target. (sold separately)
- ◆ Bundled Monaco ColorWorks utility provides a simple workflow for applying profiles, soft proofing and printing precision. ICC-compliant application no longer necessary!



Interfaces with optional MonacoSENSOR for optimal monitor calibration. The MonacoSENSOR takes actual measurements of your monitor's output to provide the most accurate calibration possible and the best results when soft proofing. (Calibrates CRT monitors only)

PORTABLE STORAGE

SONY MICRO-VAULT



CAMERA ACCESSORIES

Portable USB 2.0 Storage

The ideal solution for storing, sharing and transporting digital data, the Micro-Vault is an ultra compact storage device that just plugs into the USB 2.0 port of your Mac or PC. It needs no cables, no adaptors, no power cords, no driver software. Simply plug the (3.37 x 1 x .59") Micro-Vault into the USB 2.0 port of a computer and copy or move your files. Unplug the device, carry it conveniently—it easily fits in a shirt pocket or on a key-chain — and then access these files by just plugging it into the USB port of another computer. Nothing could be simpler.

- ◆ The easiest way to store, share and transport digital still images, presentation materials and digital audio and video files
- ◆ Plug 'n' Play USB interface requires no driver software and is compatible with Windows 2000/ XP/ME/98 and Macintosh OS 9 or higher.
- ◆ If you're worried about the security of your data, Micro-Vault's Security Zone software allows you to partition and password protect the data that you want to keep private. So that when you share the Micro-Vault, other users cannot access what you don't want them to.
- ◆ Transfer speed of 1.5MB per second offers quick access.
- ◆ Plug-in the Micro-Vault and a green LED display pulses to show it's connected. Transfer data and the LED flashes quickly. There's no external power supply, as the device is powered through the USB port.

32MB Micro-Vault (Red) (SOUSM32).....	39.95	128MB Micro-Vault (Black) (SOUSM128).....	69.95
64MB Micro-Vault (Blue) (SOUSM64).....	49.95	256MB Micro-Vault (Black) (SOUSM256U2M).....	99.95

446



SMARTDISK FLASHHOPPER

USB Flash Memory Drive

Portable data storage with plug-n-play ease of use! A portable, miniature USB flash memory drive, FlashHopper offers the fastest, smallest, and easiest way to transport and share files from home or office computer. Simply plug FlashHopper into a USB port and the unit is automatically recognized by your computer as a removable drive. Then copy the files you want, unplug and you're done. Vital data presentations, documents, MP3s, digital video and photos can be copied safely in seconds. Available in four versions from 64MB to 512MB capacity.

64MB FlashHopper	Call	256MB FlashHopper	Call
128MB FlashHopper	Call	512MB FlashHopper	Call

ROVER USB Flash Drive and Portable MP3 Player

Rover is a compact, portable data storage/transfer device that doubles as a MP3 audio player. It has exceptional sound quality as an MP3 player (with no-skip design) and is the ultimate in simple data file transfers (no cables or software needed!). Small, lightweight and sturdy enough to clip to a shirt, and versatile enough to be used as a USB storage device, Rover is simple and easy to use. The unit slides apart to plug directly into the USB port on a computer and is automatically recognized as a removable storage device. You then simply drag and drop music, digital images or data files. Rover holds up to 128 MBs of data or 2 hours of MP3 music at 128kbps and allows up to 12 hours continuous play from one AAA battery. Weighing less than an ounce with a built-in clip and headphone jack, Rover is the ultimate miniature, dual-purpose tool that puts both data and music at your fingertips wherever you are, from that last minute presentation you wrote on the plane to listening to your favorite music while running.



64MB Rover	Call	128MB Rover	Call
-------------------------	-------------	--------------------------	-------------



For Any Inquiries Regarding Your Order, Call Our Customer Service:
(800) 221-5743 • (212) 239-7765 • FAX: (800) 947-2215 • (212) 239-7549

PORTABLE STORAGE

LEXAR JUMPDRIVE

Portable USB Storage

Lexar's high-speed JumpDrive will revolutionize the way you store, transfer and carry your files. A high-speed portable USB flash drive equipped with a solid-state architecture and embedded Lexar's patented controller technology, JumpDrive provides fast and reliable storage and transfer of digital text, images and audio and data files. Available in 64 and 128MB capacities, the ultra-small JumpDrive -- roughly the size of a person's thumb -- is a great way for students, business people and anyone who uses more than one computer to store, transfer, carry and secure data. And with cross platform capabilities and no driver installation required, moving files from one computer to another has never been easier.

Store

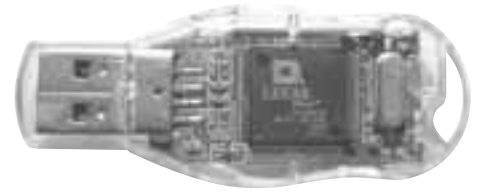
The possibilities are endless as to what you can store on your JumpDrive, from music, presentations, documents, digital photos, and more. With the integrated data protection light, the JumpDrive will blink until data is safely stored. To further protect your data, the write-protect switch can be flipped into the locked position to prevent accidental deletion of your files.

Transfer

Gone are the days of carrying around stacks of floppy disks. The storage capacity of the 128MB JumpDrive holds as much data as approximately 90 floppy disks! With the JumpDrive, you can even transfer files between your PC and Mac with no extra steps. Plug-and-play for Mac OS 9/X and Windows 2000/ME/XP, it requires no drivers and plugs directly into the USB port

Carry

You already carry your keys with you wherever you go, so why not add the JumpDrive to your keychain? With its lightweight size and durability, the JumpDrive is the easiest way to keep your most important data with you at all times. Access your files from home or on the road at a moments notice with no messy cables or adapters.



SANDISK CRUZER

Personal Storage Data Device

Created for today's active, on-the-go lifestyle, the Cruiser is the world's first portable, pocket-size storage device with upgradeable flash memory. Its stylish, compact design can be slipped into a pocket or purse for easy transport of personal computer data files, image files, video and audio between homes, offices or any other locations. The Cruiser plugs directly into your computer's USB port without any requiring any additional components, and is powered right from the USB po



Portability

- More portable than traditional removable media drives, more flexible than fixed capacity memory devices
- Up to 256MB of securable data storage that fits in the palm of your hand

Lightweight and Easy to Use

- Measuring 1.73 wide x 2.68" long, Cruiser fits easily into a pocket or purse
- Simply plug it into a USB port on any PC or Mac and your files are ready to move
- True plug and play, Cruiser requires no drivers and draws all the power it needs through the USB port

SD-Based

- At the core of Cruiser's small size and reliability is the SD memory card that is included with the product. The SD card provides speed, storage capacity and security, all in the size of a postage stamp. And no moving parts means no worries about a jammed floppy or damaged CD.
- Cruiser comes in four different capacities so you can get started at capacities that meets your needs: 32/64/128 or 256MB
- Unlike other fixed capacity memory devices, Cruiser is expandable with additional SanDisk SD memory cards.

Home or Office

- Carry pictures, music or data files in any format to anywhere. The possibilities are endless.
- Load up your PowerPoint presentations and leave your laptop at the office
- Use Cruiser instead of your removable disk drive
- Individual file encryption with password protection
- Included travel case attaches to your bag or purse when you're on the go

LACIE

PORTABLE HARD DRIVES

Data Bank

Design by F.A Porsche, the Data Bank is the most compact hard disk ever. Weighing less than 5 oz. the Data Bank is barely larger than a credit card and thinner than a mobile phone (4.4 x 2.5 x 0.5"). A masterpiece of understated elegance, the Data Bank offers 20GB of storage at fast FireWire and USB 2.0 speeds, in a sleek, ingot-shaped magnesium design.



- ◆ Hot-pluggable to easily share among cross-platform desktops, it features one FireWire and one USB 2.0 port
- ◆ USB 2.0 standard boasts transfer rates of up to 480Mbps while still maintaining backward compatibility with USB 1.1 devices. The blazing FireWire interface delivers transfer rates of up to 400Mbps.
- ◆ Offers true plug and play connectivity, without the need for driver or software installation for Windows XP and Mac OS X users.
- ◆ No power supply needed. Simply connect the drive to your computer and use the power supplied by the FireWire or USB cable.

PocketDrive

Designed for today's traveller, the LaCie PocketDrive family offers an ideal solution for data exchange, backup and archiving on the road. Slender and compact, the drives are easy to carry and feature a silicon bumper for maximum shock protection.

The PocketDrive U&I provides both USB 2.0 and Firewire (IEEE1394) interfaces in one drive. With two Firewire ports and one USB port, you can connect and disconnect any of the PocketDrives while the computer is running with immediate device recognition.



- ◆ PocketDrives weigh just 12½ ounces, yet they can easily store heavy graphic, audio and video files, and perform complete backups of most systems.
- ◆ PC and Mac compatible, the PocketDrive comes complete with USB 2.0 and FireWire cables, AC power adapter, and LaCie's Silverlining Pro drive management software.
- ◆ For those who don't require Firewire, the PocketDrive USB 2.0 delivers all the features and performance of the PocketDrive U&I, except Firewire connectivity. This streamlined version allows a more aggressive value without compromising performance.

Mobile Drive

The perfect companion for desktop and notebook computers, the LaCie Mobile Drive delivers up to 40GB storage capacity in a package that fits in your pocket. With a rugged aluminum design to reliably protect your data, and an ultra-thin, portable design to provide complete mobility, the Mobile Drive allows you to move freely and take your data with you wherever you go.



- ◆ Plug and play with USB 2.0 interface, this lightweight, portable drive boasts transfer rates of up to 480Mbps/sec. — forty times faster than the previous version — while maintaining convenient backward compatibility with USB 1.1 devices
- ◆ Uses the power supplied by the USB bus—so no AC power adapter needed—making it even easier to work when traveling.



D2 HARD DRIVES

Mobile & Desktop Hard Drives

LaCie's d2 series mobile and desktop hard drives are available in a variety of interfaces for easy connection to Macs and PCs.

While USB is best-suited for personal backup and data sharing, Wide SCSI and Firewire are ideal for use with high-bandwidth applications, such as video and audio editing. (USB & Firewire drives are Mac OS X and Windows XP compatible).

- ◆ The D2 drives feature a sturdy aluminum case designed to enhance portability, durability, and appearance. Made of a metal alloy that dissipates heat and prolongs drive performance, the drives feature a slender, stylish case that allows you to arrange them vertically on the desktop, horizontally stacked in a desk rack, or mounted in 19" racks.
- ◆ Available with up to 500GB of storage, a 250GB D2 drive can store the equivalent of a 385 CD-Juke-Box or 50,000 MP3 songs.

D2 USB 2.0 & FIREWIRE 800 HARD DRIVE

- ◆ Equipped with the Firewire 800 standard—the fastest-ever, this drive is capable of reaching transfer speeds of up to 800Mbps/s for Firewire 800 users and up to 480 Mbps/s for USB 2.0 users. The d2's dual interface, 7200 rpm speed and 8MB buffer make it the fastest-possible storage solution for digital content creators.
- ◆ With the appropriate cable, the drives can be connected to any computer equipped with FireWire 800 (9-pin), FireWire 400 (6-pin), USB 2.0 or USB 1.1 ports, making it the most universal drive ever.
- ◆ Chained and striped in a FireWire 800 RAID 0 configuration, can reach unprecedented sustained transfer rates of up to 100MB/s, making them ideal for workstation and small-server environments.

D2 FIREWIRE HARD DRIVE

- ◆ Drives are hot-pluggable, allowing for connecting and disconnecting while the computer is running
- ◆ Up to 250GB of additional storage
- ◆ Transfer rates of up to 400Mbps/sec
- ◆ Automatic plug and play configuration for Mac and PC

D2 USB 2.0 HARD DRIVE

- ◆ Spacious storage capacity: up to 200GB of additional storage
- ◆ USB 2.0 delivers transfer rates of up to 480Mbps/sec
- ◆ Automatic plug and play configuration for Mac and PC

D2 ULTRA320 SCSI HARD DRIVE

- ◆ Fastest SCSI transfer rate: up to 320MB/sec
- ◆ Ultimate performance: up to 68MB/s sustained rate per drive
- ◆ Use with RAID 0/1 arrays, audio, high-speed servers and workstations
- ◆ Backwards compatible with Ultra160, Ultra2 and UltraWide SCSI interfaces. It can even be chained with previous-generation SCSI drives without causing speed limitations.



- ◆ Fan-free design ensures quiet operation
- ◆ The drives are hot-pluggable, allowing for connecting and disconnecting while the computer is running. They are also compatible with Mac and Windows enabling simple cross-platform data sharing and exchange among workstations.

D2 ACCESSORIES



LaCie Desk Rack

Conveniently stack up to four D2 drives in this separate rack and save valuable space on your desk. When holding three drives or less, this sturdy desk rack features an area to neatly store media such as CDs and DVDs**49.00**

LaCie Security Lock

Also available for use with the D2 design is a Kensington-type lock to which protect your equipment from theft or damage. This security lock can be quickly and easily installed and features a durable steel cable**19.00**



LaCie Rackmount Kit

Configure your LaCie D2 drives in standard 19" racks with this optional rack-mounting kit. This kit allows for greater

organization of storage peripherals and tidy consolidation of hardware. Kit includes two aluminum brackets and one aluminum junction piece.....**39.00**

Included LaCie Drive Stand

LaCie D2 drives ship with a sturdy metal drive stand that provides stability and enables upright desktop use. When positioned vertically, these slender drives occupy less surface area for more efficient use of desktop space.

WACOM

GRAPHICS TABLETS



Intuos2

With 1,024 levels of pressure sensitivity, nothing unlocks the power of Photoshop, Painter, Paint Shop Pro and other professional graphics applications like Intuos2. The Intuos2 Grip Pen features Wacom's patented batteryless, cordless technology with 1,024 levels of pressure sensitivity. This cushioned pen reduces your grip effort by up to 40% so that you can work comfortably with less stress. Using a pen also helps alleviate mouse and trackball induced repetitive stress injuries. All Intuos2 professional graphics tablets come with an highly accurate, cordless, ball-free mouse complete with scroll-wheel. The 4x5" and 6x8" sizes come with

the three-button Intuos2 2D Mouse. The 9x12", 12x12", and 12x18" sizes come with the five-button Intuos2 4D Mouse.

FEATURES

Pressure-Sensitivity

Pressure sensitivity gives you complete control when creating. By pressing harder or softer, you affect brush size, opacity, or color. It also makes it easier when dodging and burning, cloning, and creating layer masks, as well as other image editing tasks. Intuos2 has 1024 levels of pressure sensitivity – more than any other graphics tablet on the market. With more sensitivity, you know you'll get the smoothest curves, the finest lines, and the most gradual color transitions possible.

Grip Pen

Supplied with every Intuos2, the ultra-comfortable Grip Pen features an enlarged cushioned grip-area that reduces grip effort by up to 40%. Like all Wacom pens, both the tip and the eraser are pressure sensitive.

DuoSwitch

Program each side of the DuoSwitch for often-used keystrokes or your keyboard shortcuts, as well as double click, right click, and click lock. Just a slight roll of the finger or thumb allows you to press either side of the rocking DuoSwitch. Streamlined shape of the DuoSwitch keeps it out of the way when it's not being used.

Tool ID

With Tool ID, the Intuos tablet recognizes which individual Intuos tool you're using. That means that if you're sharing a tablet, you can each use your own Pen, and the tablet intelligently uses the correct preferences. Tool ID also makes it possible for software such as Painter Classic to assign different brushes to different color-coded Intuos Pens. Access your favorite sable-tip brush in the time it takes to pick up a pen.

Programmable Menustrip

Can't remember some keyboard shortcuts? Simply set any button on your programmable menu strip to be a macro or keyboard shortcut for quick access to any command. The menu strip comes preprogrammed with common commands such as New, Save, Undo, and Delete. Or personalize your menu strip with your own commands by simply replacing the existing menu strip. Plus, the menu strip includes controls for adjusting pen tip pressure response and pen mode on the fly.

Dual Track

Use two Intuos tools at once. With Dual Track you can move and rotate a 3D object with the 4D Mouse in one hand while you paint and draw with an Intuos Airbrush in the other...or use the 4D Mouse to pan through a high res photo while you edit the image with the Intuos Pen...or use the 4D Mouse as a "button box" so you always have a handful of quick commands at your fingertips.

Personalize your Pen

Everyone has different drawing styles: some draw with a light touch, others draw harder. Either way, Intuos can be set to draw the way you do, so you are assured that Intuos will work with your drawing style. You can also personalize preferences such as DuoSwitch settings, scaling, menu strip buttons, and tablet mode. Create a different set of preferences for each application you use, and Intuos automatically changes them for the appropriate application.

GRAPHIRE 2

Graphire 2 is for anyone who wants to get more from their photos. Move people around in photos, colorize old black-and-white images, or just cleaning up scratches and imperfections. With Photoshop LE bundled right in the box, you'll have all the tools you need at your fingertips.



- ◆ Cordless and batteryless Pen features pressure-sensitive tip and eraser as well as two side-switches
- ◆ Also cordless and batteryless, the ambidextrous, ball free mouse features three buttons and a rubberized scrolling wheel with customizable wheel speed
- ◆ Clear plastic overlay for tracing
- ◆ Ball-free mouse design always tracks smoothly and never clogs up
- ◆ Buttons and switches can be set to user's preference
- ◆ Tablet pen stand is detachable
- ◆ Connects to the computer via USB

GRAPHICS TABLETS

Pop-up Menus

Would you rather see your often-used commands on your screen instead of on the tablet? No problem. Simply set either side of the DuoSwitch for Pop-up Menus; then, press the DuoSwitch to get a pop-up menu full of your favorite commands. Select the one you want and click.

Transparent Overlay

The transparent overlay secures original artwork or photos so they can easily be traced. No drawing experience is required.

2D Mouse

Included with 4x5 and 6x8 Tablets

Three-buttons, a scroll-wheel, and a very comfortable shape make this mouse a treat to use. It is also highly accurate and, for a mouse, it's hard to beat.

4D Mouse

With 9x12, 12x12 and 12x18 Tablets

Five programmable buttons and an easy-to-use thumbwheel make this mouse a wonderful productivity tool. Ergonomic in shape, highly accurate, and complete with a cushioned grip this mouse offers a level of comfort that matches its power.

QuickPoint

With 9x12, 12x12 and 12x18 Tablets

QuickPoint allows you to zip across your computer screen quickly and effortlessly. Simply use the small area in either corner of your tablet whenever you want to go somewhere quickly. Use the larger area for detailed work or when you want to draw with large, sweeping arm movements. With QuickPoint, you have the best of both worlds: the quickness of a small tablet and the control of a larger one.

Wacom Tablets

- **Graphire 2** (USB).....Call
- **Intuos2** 4 x 5" Tablet (USB).....Call
- **Intuos2** 6 x 8" Tablet (USB).....Call
- **Intuos2** 9 x 12" Tablet (USB)449.95
- **Intuos2** 12 x 12" Tablet (USB)499.95
- **Intuos2** 12 x 18" Tablet (USB)699.95
- **Cintiq 15x**1899.95
- **Cintiq 18sx**3499.95

Cintiq 15X & 18SX

The Cintiq 15x and Cintiq 18sx combine the advantages of an LCD monitor with the control, comfort, and productivity provided by a Wacom tablet. The LCD monitor is clear, bright and easy to look at. The Cintiq pen has 512 levels of pressure-sensitivity, is cordless, and batteryless and includes both a DuoSwitch and a pressure-sensitive eraser.

The Cintiq pen is used directly on the screen offering designers and illustrators a powerful and intuitive way to work on their computers.

The Cintiq 15x LCD monitor is an active matrix screen with 16.7 million colors, 1024 x 768 resolution and a 15" diagonal viewing area. The Cintiq 18sx offers an 18-inch LCD with 1280 x 1024 resolution. For comfort and convenience, they feature a removable pen holder that can be attached to either side and adjusted to your preferred height and angle. The Cintiq stand allows you to easily adjust the angle of your Cintiq screen between 13/15° and 70/72° - and you can even remove the stand to comfortably rest the Cintiq in your lap.



Optional Intuos2 Accessories

Airbrush: A digital pen with the feel and control of a real airbrush. Features include a top-mounted fingerwheel to control ink flow, a pressure-sensitive tip and eraser, and a programmable top button.

Inking Pen: Similar in construction to the Classic Pen but with the significant feature that this pen has the ability to write or draw with ink. It does not have an eraser or a DuoSwitch.

Classic Pen: Smaller in diameter than the Grip Pen and without the cushioned grip, this pen is classic in both shape and functionality. It has a two-button DuoSwitch and a pressure-sensitive eraser.

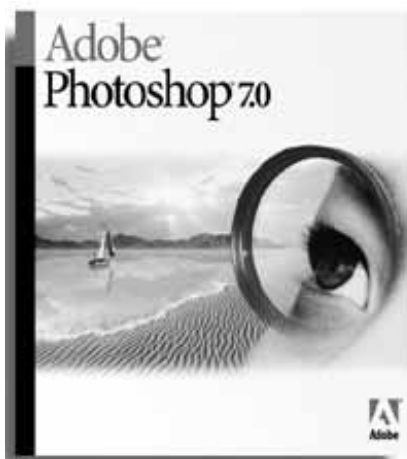
Stroke Pen: the tip of the Stroke Pen has more give than other Intuos2 pens, giving strokes a more brush-like feel. Similar in style to the Classic Pen but doesn't have an eraser or a DuoSwitch.

Lens Cursor: Five programmable buttons and a rotating cross-hair lens making it perfect for 'pick and place' tasks. Cordless and batteryless.

	Graphire2	Intuos2	Cintiq
Levels of Pressure	512	1024	512
Tablet Resolution	1015	2540	1016
Active Area	4x5	4x5, 6x8, 9x12, 12x12, 12x18	9x12 - 15" Diag. LCD
Menu Strip	—	Programmable	—
ToolID	—	Yes	—
QuickPoint	—	9x12 +	—
Accessories	—	Yes	—
Mouse	3-Button	4x5, 6x8 3-Button Others 5-Button	—
Pen	Standard	Grip Pen	Standard
Tilt	—	Yes	—
Warranty	1 Year	Limited Lifetime	2 Year Limited

ADOBE

PHOTOSHOP 7.0



The World-Standard Image Editing Solution

This is the one application that graphics professionals can't live without. The professional image-editing standard, Photoshop helps you work more efficiently, explore new creative options, and produce the highest quality images for print, the Web, and anywhere else. Create exceptional imagery with easier access to file data; streamlined Web design; faster, professional-quality photo retouching; and more.

There are a variety of tools for manipulating digital photos or for creating Web graphics. However, none of these applications come close to providing the breadth or depth of functionality as Photoshop, and none of them consistently provide the same professional level of output. Photoshop 7.0 further expands the gap between other applications with the Healing Brush, an innovative photo retouching tool that delivers professional results amazingly fast; a sophisticated new paint engine that

includes preset brushes that help you perform traditional fine-art techniques with realistic results; a new Pattern Maker that automatically generates background patterns based on any area of an image; and an enhanced Liquify feature.

FEATURES

Create Superior Web Graphics

- ◆ Instantly make Web page elements transparent by simply knocking out one or more colors, which you can quickly restore to their original settings.
- ◆ Apply transparency or partial transparency for edges that blend into any background using Dithered Transparency.
- ◆ Manage Web page rollovers, animations, and image maps more easily from the new Rollovers palette.
- ◆ Create sophisticated rollovers in Web site navigation bars without hand coding using the Selected rollover state.
- ◆ Rely on automatic file saving when jumping between Photoshop and Adobe ImageReady software.
- ◆ Save rollover states in the ImageReady Styles palette for quick production of roll-overs and other dynamic graphics.
- ◆ Quickly turn layered Photoshop or Illustrator files into GIF animations in ImageReady.
- ◆ Slice complex, layered images directly in Photoshop, and then apply appropriate format and compression settings to each slice before exporting them as an HTML table.
- ◆ Control your color table with palette color locking and Web shifting.

Design for any Medium

- ◆ Superimpose images, text, and other elements on hundreds of layers; organize layers into sets; merge, flatten, flip, copy, align, distribute, and lock layers; copy layer effects from one layer to another
- ◆ Type vector-based text on canvas and edit it at any time. Control formatting with automatic word wrap, per-paragraph alignment, and auto-hyphenation.
- ◆ Warp text to simulate text on a path and to make it conform to various shapes.
- ◆ Isolate and mask complex areas of an image using the Extract Image and Background Eraser commands.
- ◆ Acquire CMYK images directly from high-end scanners and edit four-color process images in CMYK mode without splitting channels.

Explore your Options

- ◆ Take advantage of the newest enhancements of Mac OS X and Windows XP
- ◆ Take advantage of support for 16-bit LAB images, device-independent color with CIE LAB color mode, and the PANTONE, Focoltone, Toyo, DIC, TRUMATCH, and HKS color systems.
- ◆ Instantly switch editing modes. Convert between Bitmap, Grayscale, Duotone, Indexed Color, CIE LAB, RGB, and CMYK.
- ◆ Instantly undo and redo multiple steps with the History palette.
- ◆ Share files across Mac and Windows systems using an identical feature set.

Achieve Top-quality Results

- ◆ Optimize Web graphics using sophisticated compression and export controls. View up to four side-by-side versions of an image to balance quality and file size.
- ◆ Preview an image as it will appear in print and interactively adjust position and size; perform automatic trapping; and adjust output for paper stock and printing devices.
- ◆ Export images with resolution-independent vector shapes and text as PDF files or output directly to PostScript printers.
- ◆ Ensure accurate results by soft-proofing CMYK images onscreen while still in RGB mode or printing to your desktop printer.
- ◆ Maintain consistent color across devices with enhanced color management, including support for ICC and ColorSync.



ONE HOUR FREE PARKING

AT 349 W. 34th STREET (with purchase of \$100 or more)

Powerful Creative Options

Stay competitive by turning your ideas into images that stand out

Paint and Draw:

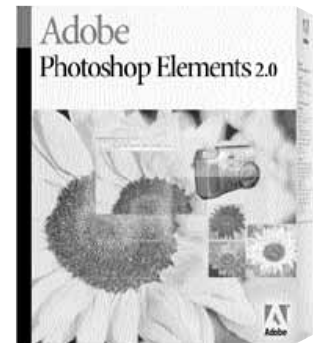
- ◆ Simulate traditional painting techniques with dry and wet brush effects, draw with pastels and charcoal, and use special brushes to paint elements such as grass and leaves.
- ◆ Work with preset brushes out of the box, or customize them by adjusting dozens of attributes, including shape, tilt, spacing, scatter, jitter, diameter, texture, and shading. Save and share custom brushes.
- ◆ Achieve even greater control over brush-strokes with enhanced support for the tilt and airbrush thumbwheel features of Wacom graphics tablets.
- ◆ Draw editable lines, rectangles, ellipses, and polygons easier than ever. Use the Add, Subtract, Intersect, and Exclude commands to create complex shapes.
- ◆ Instantly define and access custom gradients, shapes, patterns, and styles with the Preset Manager.

Add Special Effects:

- ◆ Select any area of an image and let the new Pattern Maker automatically generate an assortment of background patterns based on the selection.
- ◆ Distort images with the enhanced Liquify feature, which gives you even greater control over warping with zoom, pan, and multiple undo. Use other layers as guides to more easily align your effects, and save custom meshes that automatically resize to fit any file.
- ◆ Apply layer styles, which automatically add drop shadows, bevels, strokes, and other effects to any element placed on a layer. Save them in the Styles palette to instantly reuse them at any time.
- ◆ Achieve dazzling effects using more than 95 special-effects filters, including filters for image sharpening, softening, stylizing, distortion, and lighting.

PHOTOSHOP ELEMENTS

Photoshop Elements offers unique features designed specifically for amateur photographers, hobbyists, and business users who want to create professional-quality images for print and the Web. Easy access to state-of-the-art tools enable all users to transform photos captured with digital cameras and scanners into high-impact images. Flexible tools allow users to freely experiment and get creative with their images. Versatile output options let users quickly prepare images for print, email, or posting on the web.



Take Digital Photos Further

Photoshop Elements is the natural companion to digital photographs, whether they're generated by digital cameras, scanners, or any other source. It provides powerful tools for quickly and easily correcting flaws in photographs, editing them creatively, and using them effectively in a wide variety of ways.

- ◆ Making brightness, color, focus and rotation adjustments to photos is quicker and easier than ever before. The Quick Fix dialog consolidates these indispensable tools so you never have to hunt through menus to make essential photo editing adjustments. Helpful Tool Tips explain the various adjustment tools so you can choose the right one for the job. It's possible to undo multiple editing decisions without leaving this dialog.
- ◆ Color Variations fixes color and exposure imperfections easily and intuitively. Just click the thumbnails that look best, until the preview image is just right. Color Variations offers a wide range of color correction capabilities, and with the ability to undo multiple choices, you have total control.
- ◆ Auto Straighten/Auto Crop is a time-saving, one-touch command that automatically rotates and crops a photo that has been scanned at a slant.
- ◆ The Red-eye Brush easily removes red-eye. Simply paint away the red-eye (or green-eye in some pets), while retaining the natural liveliness of the eye.
- ◆ Add artistic touches to images with redesigned Brushes that emulate real-world art media. These include options such as oil, watercolor, charcoal, pastels, and different canvas textures. The wide variety of possibilities in tips, shapes, opacity and behavior offers literally hundreds of different creative combinations.
- ◆ Layers and the Layers Palette give you freedom to explore image collaging and composition, while maintaining control and editability over all components. Any text, image or object that is pasted into a composition can be kept separate from the rest of the collage.
- ◆ Automatically size, orient and stitch multiple photographs into seamless panoramas. Photomerge offers fine tuning controls for arranging images, and supports larger files.
- ◆ Picture Package Printing saves time and paper by laying out multiple images in various sizes on a single page, for professional-style printouts from any home inkjet printer. Can also automatically size and arrange all the images onto a Contact Sheet.

JASC SOFTWARE

PAINT SHOP PRO 8

\$30 cash rebate with purchase
Offer expires 3-28-03



COMPUTER IMAGING

454

Complete Photo and Web Graphics Editor for Home and Business

A do it all digital-imaging product, Paint Shop Pro 8.0 is a complete graphics and photo editor that offers the easiest, most affordable way to achieve professional results. No matter what you're into - digital photography, sharing family photos, creating business graphics, or designing Web sites - Paint Shop Pro 7.0 is packed with powerful tools that help you look great. But it's not a one-size-fits-all product. Newcomers will love the handy, automatic tools - and professionals will appreciate the top-notch, high-end features. So whether you're a new digital camera owner, or a graphics guru with your own Web site, Paint Shop Pro gives you an easy, very affordable way to make amazing, professional images.

- ◆ Everything you need, whenever you need it - edit photos, add special effects, create Web graphics, draw, paint, animate, and organize your images, all in one solution.
- ◆ The perfect solution for new digital camera owners - now even easier to use with a new product tour and hands-on tutorials. Offers a great value at a very affordable price.
- ◆ Great for digital photographers, Web designers, hobbyists, and business users. Paint Shop Pro offers a short learning curve for novices plus top-notch high-end features professionals demand.

LATEST FEATURES:

Version 7 adds a slew of new features for retouching digital images, creating business graphics, and producing interactive Web graphics. Paint Shop Pro's vector shapes have been enhanced and now support gradients, textures, and patterns on stroke and fill commands. New image editing features include auto-enhance, which adjusts color balance, brightness, saturation, and hue to improve picture quality with a single click. New filters for noise, scratch, and dust removal, together with automatic red-eye removal, make picture restoration easier than ever.

You don't need a separate vector application to create business graphics--Paint Shop Pro's enhanced vector-drawing tools provide everything you need. New align, distribute, arrange, group, and resize commands, plus snap-to grids and guides, make for quick and accurate positioning of graphic elements. And there are more than 20 new artistic and lighting special effects with which to experiment.

Digital Photographers

Import photos from digital cameras and scanners right into Paint Shop Pro then retouch, repair, and edit them with easy-to-use, high-quality, automatic photo enhancement features:

- Make simple adjustments: crop, rotate, resize
- Make quick fixes with automatic photo effects: color balance, saturation, contrast, and more
- Repair damaged photos and correct red-eye
- Use the tools pros love: retouch, clone, create collages and panoramas
- Share your photos - print, email, or post online

Business / Home Users

Create any type of project you want -flyers, presentation graphics, diagrams, greeting cards, CD covers, and more. Easily add custom images to your home and business graphics projects.

- Design custom graphics with color, pattern, texture, and gradient brushes
- Paint with ready-made Picture Tubes art elements
- Generate editable text that conforms to any path or shape
- Capture screen shots to embed in documents, articles, or online help files

Paint Shop Pro 7 and After Shot run on Windows 95/98/NT/2000/ME and XP.

Web Designers

Create and optimize Web graphics with built-in Web tools and artistic drawing and text tools.

- Easily create basic editable shapes
- Use node editing to create custom shapes
- Save time with productivity tools: grids, guides, alignment, and grouping
- Store, reuse, and share your shapes, lines, and text in the Shapes Library
- Expand your creativity with over 75 special effects such as beveled edges and drop shadows
- Batch convert over 45 file formats
- Built-in Web tools to optimize, slice, map, add rollover effects, and animate element



www.bhphotovideo.com

JASC SOFTWARE

PAINT SHOP PRO 8

This special 10th-anniversary edition of Paint Shop Pro is filled with more than \$100 worth of free software, filters, and images. You will get:

- ◆ Jasc Media Center Plus for organizing photos into albums. The easy way to file and find your photos, clip art, scanned images, and Web graphics on your hard drive, CD-ROMs, or Zip disks.
- ◆ Jasc Animation Shop: Lets you add impact to your Web site and multimedia presentations by easily animating your graphics, buttons, banners, and more.
- ◆ Virtual Painter: Allows you to create realistic-looking paintings and custom artwork in seconds.
- ◆ Flaming Pear: Lets you infuse your graphics with two texture-generating effects—lacquer and swerve. Hundreds of presets with graphic previews will have you making eye-catching text, web buttons, and more.
- ◆ Muska & Lipman Tutorials: Teach you how to create astounding graphics -- from photo enhancement to professional Web graphics—with step-by-step instructions in full color.
- ◆ Alien Skin Eye Candy: Will add life to your graphics with 21 special effects.
- ◆ Other bonus resources include 30 new picture tubes, picture frames, and fun shapes, which are great ways to add pizzazz to your projects.

	Jasc Software Paint Shop Pro 8 Anniversary Edition	Ulead PhotoInact 6	Adobe Photoshop Elements 1	Adobe Photoshop 6
Digital Photography				
Direct digital camera support	✓			
12 automatic quick fix photo enhancement tools	✓			
Precision photo enhancement tools	✓	✓	✓	✓
Upload to online photo sharing	✓	✓	✓	
Publish HTML Photo Galleries	✓	✓	✓	✓
Slide shows	✓	✓		
Add picture frames and edges	✓	✓	✓	
Add keywords & comments to images	✓	✓		
Search images by keywords	✓	✓		
Create, edit, and load masks	✓	✓		✓
Business/Home Graphics Use				
Multiple image layout/printing	✓			
Paint with gradient and texture brushes	✓			✓
Create custom line styles	✓			
Outline text with stroke/fill control	✓			
Flow text on a path	✓	✓		
Save, load, and edit Masks	✓	✓		✓
Picture Tube brush	✓	✓		
Special effects and filters	✓	✓	✓	✓
Editable shapes, lines, text	✓	✓	✓	✓
Web Graphics Design				
Customizable Shape Library	✓	✓		✓
Slicing, mapping, rollovers	✓	✓		✓
Image optimization	✓	✓	✓	✓
Animation support	✓	✓	✓	✓
Productivity and Ease of Use				
Save and load workspaces	✓			
Screen captures	✓	✓		
Visual browser	✓	✓	✓	
Multiple undo/redo	✓	✓	✓	✓
File formats supported	Read 44 Save 32	Read 36 Save 29	Read 20 Save 14	Read 20 Save 14

After Shot Premium Edition

Organize, fix, and share photos from your digital camera! Filled with amazing, easy-to-use tools, After Shot makes your digital photography experience what it should be – fun, fast, and simple!

- Automatically transfer photos from a PC card to your computer with Auto PC card detection – an amazing time-saver.
- Correct color and contrast with a click of the mouse. Need more control over contrast, color, and saturation? Color correction controls allow for precision photo manipulation.
- Crop to standard photo sizes for instant 4x6s, 5x7s
- Rotate, rename, resize, and Quick Fix many photos at once
- Choose from over 40 printing templates including photo sizing, such as 4 x 6, 8 x 10 and wallets.
- Turn a series of photos into a mini QuickTime movie
- Create HTML pages using dozens of templates to export your favorite photos directly to the Web
- Add voiceovers or text with the Annotation option



ANDROMEDA SOFTWARE

PLUG-INS for MAC & WINDOWS

PHOTOGRAPHIC TOOLS AND LENS EFFECTS

ScatterLight Lenses

A multi-platform, Adobe Photoshop plug-in that produces a broad scope of realistic patterned and diffusion lens effects ranging from subtle soft focus effects most often seen in professional portraiture and landscapes, to more dramatic effects that scatter and focus light over the brightest areas of an imageCall

Andromeda ScatterLight Lenses has 4 distinct effects categories:

- ◆ DreamOptic lens effects range from subtle to dramatic. They refine the richness and texture of your images and add a soft dreamy glow to landscapes and stills.
- ◆ SoftFocus lens effects provide varying degrees of overall softening and refinement most often seen in professional portraiture.



- ◆ StarLight lens effects focus light over the brightest areas of your image to create starlight effects. The Filter offers many different star patterned templates. Most dramatic when used with images with focused points of light.
- ◆ Soft Diffuser lenses for more extreme fog and mist effects

Andromeda Photography Filters

A collection of 10 filters that let you add special optical lens effects to your images quickly and easily.....Call

cMulti and sMulti Filters create versatile circular or straight, multiple lens, kaleidoscopic effects.

Designs Filter has 100 single bit textures and patterns that can be rotated, colored, bent and warped: a "2 1/2 D" effect impossible to achieve manually!

Mezzo Line-Screen Filter uses patterned screens within designs to convert your photo to B & W mezzo line-art. Ideal for rich illustrations and image dependent textures.

Diffract, Prism and Rainbow Filters have versatile geometric controls to create spectral effects far easier than any gradient tool.

Halo Filter provides controlled highlight diffusion. Adjust for direction, spread and intensity.

Reflection Filter provides instant clear pool reflections. Adjust position, feathering and opacity. A must for 3D scene creation.

Star Filter is the ultimate star design tool for adding single or multiple bright glints, sparks, and glows to your image. View our Star Filter applications for advanced users.

Velocity Filter has three unique motion effects. Multiple ghosting highlight smears and fade-out.



Andromeda LensDoc Filter

A universal solution to lens distortions, LensDoc corrects barreling and pincushioning distortions in your photos which are produced by zoom and wide angle lenses. It also allows simple perspective and rotational adjustments. Use the step by step Novice interface, or Professional level Expert Mode. Identify curved lines that should be straight and place the target points, LensDoc does the rest.....Call



Before (left) and after (right) LensDoc

Perspective Filter

A unique Photoshop compatible plug-in, the Perspective Filter uses a camera paradigm to introduce or enhance depth or perspective distortions in your images. Change and conform multiple images or text characters. Use factory presets with a visual interface or create your own. A quick and intuitive perspective tool.....Call



Andromeda VariFocus Filter

Defocus then focus to the point, this depth of field effect is an Andromeda developed variable defocusing technology. Focus on an area by using our aperture masks or import your own. Distort, shift and save masks. Use the positive and negative unsharp masking controls before you apply focus/defocus to sharpen your image or to create a special effectCall



SCIENTIFIC TOOL

Andromeda Measurement Filter

For medical-scientific or graphic arts image analysis. Examine images with more detail and flexibility than in Photoshop. The Measurement Filter uses paths as rulers for measurement. Line Profiles, Histograms, Distance, Angles. Simultaneously examine data in multiple formats. Output measurements to the clipboard. New rulers (paths) can be imported, created and edited with a full Illustrator-like tool set inside the filter.

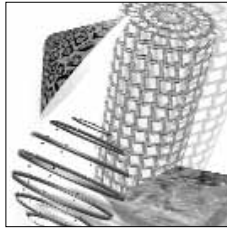
ANDROMEDA SOFTWARE

PLUG-INS for MAC & WINDOWS

GRAPHIC DESIGN RESOURCES

Andromeda Three-D Luxe Filter

Expands the functionality of the Three-D Filter to include texture wrapping and combining images from Photoshop using textures and new features within the Filter. Add dropout, texturing and combine features to your imported image; or create a whole new one. New features include Stressed, Riveted, Aged, Mesh, and Alien sculpted surfaces. Combine 3D textures, 3D surface and your input photo. Adjust the contribution from each layer for phenomenal effects



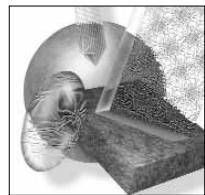
Andromeda Shadow Filter

No other shadowing plug-in has these features: Natural soft edges and Blurring, Drop and Cast shadows imposed on a Moveable Plane, Multiple Shadowing with Four Moveable Lights, Perspective Shadows with a Virtual Camera and Stereo 3D Viewing.



Andromeda Velociraptor Filter

Wildly Different Motion Trails - You'll notice the difference when you create your first motion trail. Velociraptor is the only plug-in filter that allows the user to create stylized motion trails that can Arc, Bounce, Cascade, Converge, Curve, Decline, Diminish, Jolt, Jitter, Loop, Spiral, Spring, Streak, Trail, or Wave

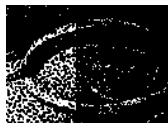


Andromeda Techtures Filter

Techtures offers over 500 hand rendered tiles which can be modified using "engines" within the filter and dozens of instant special effects: Smoke, Stars, Explosions, Water Droplets, Lightening, Embossing, and dimensional and environmental texturing

ARTISTIC SCREENING TOOLS

Andromeda Screens Filter



Converts gray-scale into a wide variety of different line art screens from 15 to 400 LPI (lines per inch) featuring mezzotints, sharp contrast mezzograms, mezzoblends, ellipses, lines, circles, spokes, waves or any blended combination

Andromeda Cutline Filter



allow for positioning and adjustment of directional screen lines

For digital engraving and woodcuts. Cutline Filter has four screens suited for exceptional hand engraved and woodcut effects. Specific tools

Andromeda EtchTone Filter

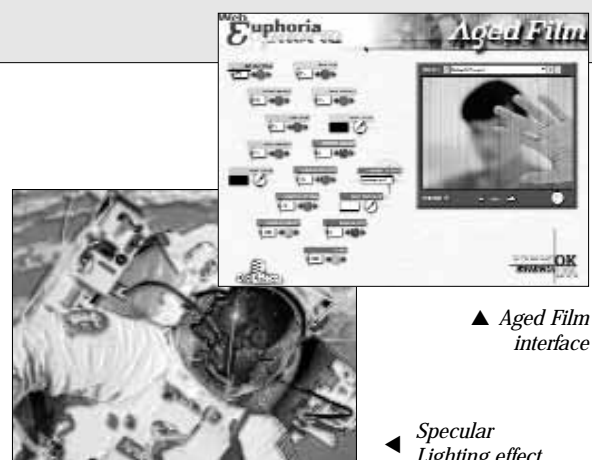
Simulating the look of a steel etch starting with gray/color photograph or illustration. The etched continuous tone output resembles age old printing that just softens the harshness of the solid b&w etching



DigiEffects *Web Euphoria*

Never before have digital artists been given this level of creative control over digital images! DigiEffects' Web Euphoria contains 20 special effects plug-ins for Photoshop MacOS (soon for Windows), including tools for creating particle-based fire, smoke and rain. And these aren't your typical "particle-only" simulations, these effects are enhanced with built-in turbulence processing to create super-realistic imagery without resorting to complex 3D programs.

You can also create old-movie effects, noisy video transmissions, light-blasts, posterizations, laser beams, text effects, and much more! Each plug-in has a custom user interface that is easy to use. There are over 300 presets, and you can even save your own! Fully interactive preview allows changes to be made quickly. Web Euphoria can also be used with Premiere, but the parameters and effects are not animatable.



▲ Aged Film interface

◀ Specular Lighting effect

ORDER & INFO. (212) 444-5027 • FAX: (212) 239-7770 (800) 947-7008
1-800-947-9927 • www.bhphotovideo.com



ALIEN SKIN

PLUG-INS

Eye Candy 4000

Eye Candy 4000 is a collection of 23 time-saving filters that will fortify any user's creativity. Eye Candy is the only filter set on the market that combines practical effects like shadows, bevels and glows with stunning effects like Chrome, Fire, Smoke and Wood. This easy-to-use set is consistently ranked one of the top-selling graphics plug-ins in the world.

- ◆ Interface contains dozens of new controls yet remains compact, clearly organized and easy to use. If a filter has a large number of sliders, they have been organized onto tabs for ease of use.
- ◆ Bevel Profile editor included in Bevel Boss, Chrome and Glass, gives complete control over the shape of bevel and carve effects. Bevel Profile settings can be named and saved for later use
- ◆ Color Gradient editor included in Fire, Gradient Glow, Smoke and Star lets you create a stunning variety of color effects. The color and opacity of each color stop in the gradient can be controlled, producing multi-hued glows, halos, rainbows and more.
- ◆ Seamless tiling is available in the following texture effects: Fur, HSB Noise, Jiggle, Marble, Swirl, Water Drops and Wood.
- ◆ Settings are tradable via email, and are also usable across both Mac and Windows platforms.
- ◆ Keyboard shortcuts identical to those used in Photoshop help streamline the production process.



- ◆ Specify absolute units for your settings to create effects that are resolution-independent. Slider parameters are based on the measurement unit you choose in Photoshop (inches, centimeters, etc.), which means a setting created and saved at 300 dpi will look the same at 72 dpi. This is an enormous time-saver for graphic designers who move from print to the web, or who create proofs at screen resolution before going to print.
- ◆ Unlimited Undo and Redo capability within the preview window of each filter. The Huge preview window is fully resizable. "Show All Layers" command allows users to preview the effect with all layers in the image visible.

Eye Candy 4000 for Mac & PC.....CALL

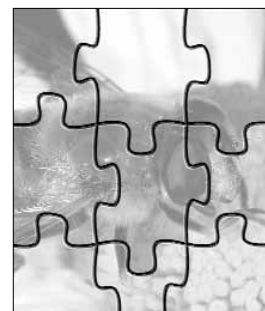


Xenofex

Create realistic natural phenomena and sophisticated distortions using Xenofex for Photoshop. This collection of 16 special effects includes over 160 presets. The simple and intuitive interface helps you create complex special effects in seconds. Preview any of the effects using the resizable and zoomable preview.

- ◆ Includes 16 spectacular, time-saving special effects filters. Create realistic natural phenomena, complex distortions and other stunning effects in seconds rather than hours. Professional-level special effects have never been easier!
- ◆ Over 160 presets allow you to start making sophisticated graphics from the moment you install!
- ◆ The most advanced preview capability of any Photoshop filter set - each filter in Xenofex includes a fully resizable and zoomable preview window, with a thumbnail of your image that allows you to navigate to any part of the preview with a single click.
- ◆ All Xenofex filters work in Grayscale, CMYK, RGB and Duotone image modes. Now every graphic artist, from color printers to newspaper designers and anyone in between, will be able to take advantage of this latest addition to Alien Skin's line of award-winning plug-ins.
- ◆ Each filter allows you to name and save your favorite settings for future use. If you're happy with a particular effect, you'll be able to instantly duplicate it any time you like!
- ◆ Xenofex is fully scriptable with Photoshop's Actions feature, making complex and/or frequent tasks easy to automate.

Xenofex for Mac & PC.....CALL



Puzzle Feature



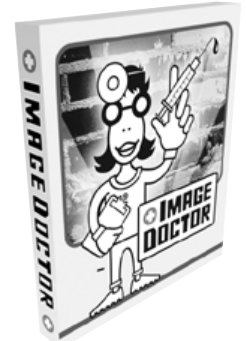
Lightning Feature

ALIEN SKIN

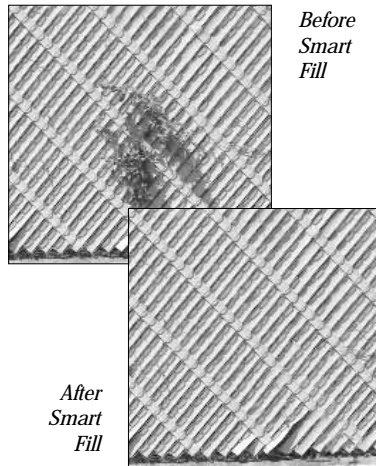
PLUG-INS

Image Doctor

Image Doctor is a set of powerful image-correction filters for Photoshop, Fireworks, Paint Shop Pro, and other image editors. It magically removes blemishes and defects, quickly repairs over-compressed JPEGs, and seamlessly replaces unwanted details and objects. Professional and amateur photographers, photo editors, archivists, graphic designers and Web designers can quickly fix their images with Image Doctor. Image Doctor offers selection-based image repair. Use the familiar selection tools of your image editor, then correct large as well as small areas in one pass. The intelligent pattern matching of Image Doctor makes it the perfect complement to your photo-editing tools.



- ◆ Clean, easy-to-use interface. Tweak your effects in a huge preview that includes a before/after toggle, command menus, keyboard shortcuts, and unlimited undo capability.
- ◆ Smart Fill replaces large objects and defects, intelligently combining the repair with the background. Smart Fill removes signs and trash from landscapes, unwanted tourists from vacation snapshots, and uninvited guests from party photos, leaving no seams.
- ◆ Scratch Remover mends small defects and removes unwanted background details. Simplifying photo restoration, Scratch Remover repairs scratches, folds, creases, and wrinkles. Microphones, telephone poles, and text are cleanly and quickly eliminated from photos, also.



- ◆ Spot Lifter removes blemishes while preserving the texture and detail of the underlying image. Ideal for erasing skin flaws such as moles, birthmarks, acne, and beauty marks. Easily erase tattoos, as well as reduce dark circles, shadows, and wrinkles around the eyes. Spot Lifter also removes photo imperfections such as watermarks, stains and dust.
- ◆ JPEG Repair revitalizes over-compressed JPEGs. Remove blocky compression artifacts while retaining detail and adding grain. Repairs can be made to an entire image or as needed to smaller selections. JPEG repair can be used to repurpose Web graphics and replace lost originals.

Image Doctor for Mac & PC.....CALL



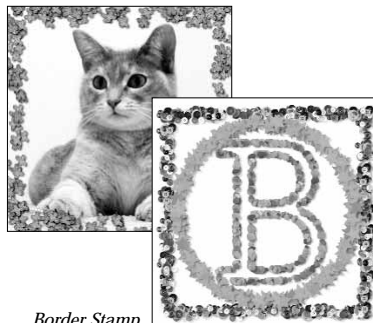
Splat!

A powerful filter set for Photoshop and other graphics programs, Splat! combines frames, textures, edges, borders, mosaics and more with the award-winning interface of Eye Candy 4000 in an affordable plug-in. Digital photographers, graphic/web designers and digital artists can set their images apart using the stunning effects of Splat!

Fill Stamp



- ◆ Add versatile, decorative edge effects such as halftone dots, torn paper, and pixelated edges. This effect works with any selection and looks great applied to text.
- ◆ Fill any selection with familiar objects. Choose from over 100 stamp files, then scale the objects to fit. Fill Stamp adapts to any shape and works well on text. This effect can seamlessly tile and be colorized to match your image.
- ◆ Add realistic frames and mattes to any photo or other rectangle. Choose from 100 frames, including traditional wood frames, Dover, and geometric borders.
- ◆ Add any of 100 high-resolution surface textures to an object or selection. Adds natural media with only a few clicks, distorting your image to match the surface. Textures include paper, concrete, leather, brick, stone, metal, wood, and more.



- ◆ Border Stamp applies the power of Fill Stamp to border making, creating borders from everyday objects such as pebbles, pills, and tickets. Great for themed borders, Border Stamp includes realistic drop shadows and adapts to any shape.
- ◆ Patchwork recreates images as mosaics such as light pegs, ASCII art, ceramic tile, and cross-stitch. Simply browse the Patchwork libraries, scale your tiles, and apply.

Splat! for Mac & PC.....CALL

AUTO FX SOFTWARE

PLUG-INS

Auto FX Software is one of the world's foremost developer of visual enhancement software. Their software works both as a plug-in for Adobe Photoshop, or as stand alone applications for Windows 98/NT/2000/ME/XP or Power Macintosh systems running OS 8.5 or higher. They also run native under OS X.

DreamSuite Series

The DreamSuite series was designed to be useful for your everyday design projects. Great care was put into building an infinite amount of variation into the effects so the work you create is styled after your own tastes and avoids the "canned" look so many graphics programs are known for.



DreamSuite Series One

DreamSuite Series 1 is an advanced, full featured, photo-realistic visual effects application that offers precise control over the creative process. Featuring 18 effects with over 440 presets, DreamSuite lets you achieve visual results that are difficult or impossible to attain using any other software or method - including Photoshop.

35mm Frame - Put your photos into 35mm slides and create collages of your work

Instamatic - Surround your photos with a photo-realistic instamatic frame

Chisel - Unique hammered, chipped and dented depth bevel effects

Liquid Metal - Brush and paint with liquid mercury, melted gold and other metals

Crackle - Simulate photo-realistic aged photo cracks and crackled surfaces

Metal Mixer - Blend metal surfaces together for a mix of unique depth effects

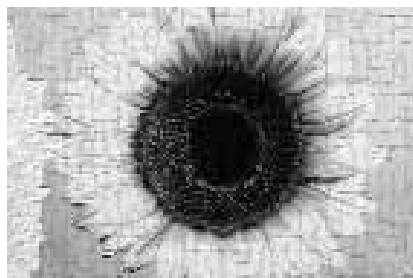
Crease - Interactively bend and crease your photos for unique depth looks

Photo Border - Add stylized borders around your photos and overlap collages

Cubism - Add artistic cubed shapes to your photos and backgrounds

Photo Depth - Add depth to your photos by fraying, denting and crimping

Deckle - Rip and tear your photos to give them a torn deckled appearance



Crackle effect

Photo Tone - Blended sepia tones, focal glows and mottled backgrounds

Dimension X - Over a dozen unique depth bevels, shading, glassy reflection and more

Putty - Bend, twist, enlarge, push, reshape, squish and reform your images with bezier tools

Focus - Simulate soft focus, zoom, rotated, and motion focus effects

Ripple - Interactive photo-realistic ripples, waves, water surfaces

Hot Stamp - Add punch to your type and graphics with blends and melded glows

Tape - Photo-realistic masking tape, transparent, duct, sports and other tape types

DreamSuite Series Two Effects

DreamSuite Series Two is a powerful collection of 12 unique visual effects for enhancing photographs. Series Two offers a wide diversity of visual options to make any photo you have more distinctive.

2 1/4 - Photo-realistic 2-1/4 film frames with unique translucency

PhotoPress - Press photos down into the background scene for a distinctive look



Film strip effect

4 x 5 - Photo-realistic 4 x 5 film frames with unique translucency

PhotoStrips - Slice and overlap image strips to form unique visual effects to any photo

FilmGrain - Simulate traditional high-grain films for stunning enhancements

PlasticWrap - Make elements in a photo look like they are pressing against a sheet of plastic

FilmStrip - Interactively bend and crease your photos for unique depth looks

FilmFrame Art - Creative filmstrip effects for combining images together artistically

Tile - Shape your photo using tiles and depth to give you a layered depth appearance

Puzzle Pieces - Turn your photos into puzzles with realistic pieces you can move around and layer

Mesh - Weave together strips of photos in a creative mesh effect

Wrinkle - Apply photo-realistic wrinkles and depth shading to your photos

AUTO FX SOFTWARE

PLUG-INS

DreamSuite Gel

DreamSuite Gel is a fun special effects suite that can add vibrant, translucent depth effects to your artwork. With Gel you can generate stunning print and web graphics with ease. Built with the award-winning DreamSuite engine, Gel offers an infinite variety of looks and combinations of visual results.



Photo/Graphic Edges 5.0

Photo/Graphic Edges 5.0 is a unique creative tool that makes your photos distinctive and artistic with the click of a button. It adds torn, ripped, deckled, feathered, painted, film frames and darkroom styled edges to any grayscale or color image. Each effect in lets you have complete control over every aspect of the design work. Interactive onscreen tools let you freely transform your effect and edges, apply surface grain, lighting, shading, matte or colored backgrounds and more! Photo/Graphic Edges 5.0 also features 4 visual effect modules in the same package: Edges, Montage, Vignette and Frames – so the creative possibilities are infinite!



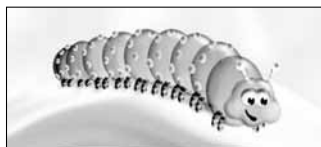
Liquid Crystal – Brush on and flow soft, reflective, translucent glassy depth on your artwork

Crystal Painter – Brush and paint with liquid mercury, melted gold and other metals

Gel Mixer – Blend and mix an unlimited number of gel surfaces together

Gel – Apply vibrant depth to your type and graphics with a brush or selection

Gel Painter – Unique hammered, chipped and dented depth bevel effects



- ◆ 17 volumes of effects—over 10,000 edges
- ◆ Hundreds of color frames and feathered vignettes
- ◆ 1000 Matte Textures and 200 Light Tiles
- ◆ Advanced onscreen catalog viewing of effects
- ◆ Presets that have visual thumbnails of the effect

All Auto FX plug-in feature:

ADVANCED PREVIEW SYSTEM
Adjustable preview features a 1600% marquee zoom capability with built in panning support. Previews can be shown in Proxy mode so they render blazingly fast regardless of the image size.



MEMORY DOTS
Click a memory dot on the interface and the plug-in remembers your current settings. Explore your design ideas and come back to where you were with a single click.

CONTROL INTERRUPTS
As you adjust controls the effect updates itself automatically. An intelligent control interrupt system allows you to interrupt the effect if it is updating itself.



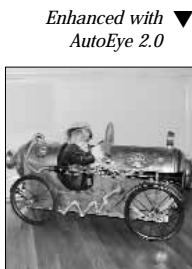
Auto Eye

AutoEye 2.0 features revolutionary new technologies that rebuild lost detail and color in images and provides amazing improvements. AutoEye uses unique color space and advanced patented technologies to give you results you cannot achieve using any other software.

AutoEye uses a totally different set of adjustment methods than Photoshop or other image editing applications. AutoEye does not use standard curves and histograms to adjust images on a global basis within the RGB or CMYK color space. AutoEye's unique methods result in image enhancements that are easier to attain and yield a higher quality result.



▲ Taken with a digital camera



Reclaim Lost Color and Detail –

During the process of converting an image from analog to digital, a great deal of color and detail information is lost. AutoEye uses I.V.I.T, a patented Intelligent Visual Image Technology, to help it see images in a unique way and reclaim much of the lost detail and color and improve the overall appearance of an image.



AutoEye 2.0 has an easy to use feature packed interface

HUMAN SOFTWARE

PLUG-INS

AUTOCORRECT *Professional Picture Enhancement*

Easy to learn and easy to use, AutoCorrect uses one-click image enhancement tools and a unique sharpening technique to reclaim lost colors and details. Ideal for professional photographers, designers, hobbyists who need to make their digital, traditional or stock photos look their very best, AutoCorrect will work inside Adobe Photoshop, Photoshop Elements, Jasc PaintShop, Painter, PhotoPaint, ULead, Microsoft Picture and even Illustrator, Freehand and many more.



\$59⁹⁵

- ◆ AutoCorrect is a very efficient one click color correction based upon intelligent image analysis and techniques professionals are using in darkrooms. With AutoCorrect you get a professional picture enhancement tool in RGB or CMYK directly on a layer of Photoshop or Painter if you wish.
- ◆ Enhancing images can be very time consuming with a lot of trial and errors. With any standard graphic application at each step you may enhance the quality of your image in one area, but you may lose details elsewhere! One-step means that you don't lose image details by performing color correction in several steps.
- ◆ The AutoCorrect dialog is minimum, but you still have the ability to check your image at any level of detail. Since getting the perfect image is a matter of taste, AutoCorrect will do the job for you, allowing you to easily tune different parameters including the strength of the automatic enhancer, curves, sharpening and global mutation.
- ◆ AutoCorrect uses a very unique image analysis to provide clearly better image enhancement. The result is crispy and life-like images. Sharpening is combined with the image and color enhancement in one single operation.



\$49⁹⁵

PHOTOSURFACE *Add Texture to your Images*

Give a new dimension and distinctive look to all your images. PhotoSurface is a powerful plug-in that gives you the power to add a natural, hyper-realistic texture to all your images with just one click! PhotoSurface features over 110 natural textures (wood, rocks, metal, leather, paper and more!). There is no limit to the number of changes of texture and surface you can achieve, due to its powerful and fully editable layering mechanism. It's easy to customize your new surface. Since PhotoSurface works with a layer principle, you can add/combine multiple unique new texture to a single image.

All Human Software plug-ins work with Photoshop 4 and above, Photoshop Elements, PhotoPaint, and Jasc Paintshop. They require Windows 95/98/NT/2000/XP or Power Macintosh machines.

AUTOMASK *Mask the Most Difficult Images*

Perform precise masking fast. Hair, trees, smoke, transparencies, blurred edges, AutoMask will do it for you. Magic Wand, Extract, Color range or vector-based masking tools offer no solution for these kind of complex subjects. AutoMask works directly in RGB or CMYK on a layer of Photoshop/Jasc PaintShop. And thanks to its virtual mechanism, doesn't require huge amounts of memory.



\$89⁹⁵

Global Density Masking

- ◆ The density masking action occurs all over the selected area in RGB or CMYK
- ◆ In Global Density mode, simply select several colors, and create a mask on these selected areas. (Turning the Global Density to 'Protect' mode prevents the creation of a mask

Local Density Brush Masking

- ◆ Move along the edge of the subject and sample the image with the Density Brush Picker. The selected color is used to build a mask automatically along the edge.
- ◆ An unlimited number of readings can be taken. Undo lets you go back and forth between any masking feature at any point. The local brush may be used in combination with the global density tool.
- ◆ Density brush masking tool keep the smoothness on the edge. The brush automatically detects the edge of the subject and takes into account the natural aliasing of the edge for beautiful silhouette creation.
- ◆ In global density mode, the virtual brush yields an unprecedented control over 'color range' or 'mask-pro' tools.



EQUIPMENT LEASING AVAILABLE

HUMAN SOFTWARE

PLUG-INS

SQUIZZ

Professional Distortions

Squizz is an incredible plug-in available on Mac and Windows. You can directly distort any Grayscale, LAB, RGB, CMYK images or even directly on a layer, within a selection. Distort using a grid, an envelope, a brush, you can zoom at any level of details, use a template for precise warping and much more. Squeeze, smear, wrap, twist, pinch, distort, expand your photos anyway you like...without limits!

Distort with a Brush

With the exclusive Hand Distorting Virtual BrushTool, you can brush and sculpt directly onto your photos and create instantly amazing distortion effects, in real time on picture of any size. Unlimited undo allows you to brush back with more or less strength to adjust the change.

Distort with an Envelope

Need to warp a bitmap to a specific shape (flag, cone) now you can. Just draw a rectangle over the start image, then pull and push the corners to create a new shape, the image inside will follow.

Distort with a Grid

A unique Grid Warping with the help of a mesh lets you move points of the overlay grid in any direction to expand, pinch and distort like a rubber desktop.

- ◆ You may decide to turn your grid as a set of Bezier curves.
- ◆ Save any distortion effect and reapply it on another picture!
- ◆ Adjust the number of steps independently in X and Y direction on your grid.
- ◆ Recall another image as a template to precisely adjust your grid!



Additional Features

- ◆ Distort with 3 Bezier Paths
- ◆ Large previews and unique Pan & Zoom at any level of details
- ◆ Works on layers (keep the transparency)
- ◆ Distort to any kind of templates
- ◆ Perform morphs and tweening inside Photoshop
- ◆ Create and play Quicktime movies inside Photoshop

SELECT

Color Correction Tool for Professionals

Perform smooth and ultra-precise color corrections selectively without having to create any masks. With SELECT you perform easily and accurately sophisticated color retouching on all your Lab, RGB, CMYK, HIFI or DCS (up to 24 channels) pictures directly from within Adobe Photoshop. No more guesswork. SELECT works precisely and very smoothly. Proprietary WYSIWYG mechanism lets you see what you will get very accurately.

- ◆ With SELECT you use exclusive color correction features such as a unique selective Multi-Color Correction, advanced Plate Manipulation and fully adjustable Curves—usually found only on high-end color systems and drum scanners.
- ◆ With SELECT you easily recolor images in Lab, RGB, CMYK, HIFI Colors or DCS.. The color correction is automatically perfectly smooth on the edge. SELECT lets you use up to six channel for multi-color masks.
- ◆ SELECT features a multi-selective color correction. SELECT is visual but precise. No awkward dialog like inside Photoshop. You pick a color, select a target color, adjust your range, it is fast and easy! SELECT is very performance in its color display accuracy.
- ◆ Use these powerful tools to color correct all your Lab, RGB or CMYK pictures in a snap and boost your productivity—no matter if they are high-end scans, Photo CD pictures or color illustrations
- ◆ Easily perform truly selective color changes on up to 6 specific colors, with similar controls and capabilities to those available on high-end drum scanners.
- ◆ You select and adjust specific colors without affecting other color densities and eliminate time consuming masking. For example, remove all the Magenta from only the greens. SELECT offers you independent Range adjustment per channel, so you don't have to worry about color break in your images.



\$229.95

ORDER & INFO. (212) 444-5027 • FAX: (212) 239-7770 (800) 947-7008
1-800-947-9927 • www.bhphotovideo.com



HUMAN SOFTWARE

PLUG-INS

COMPUTER IMAGING

464

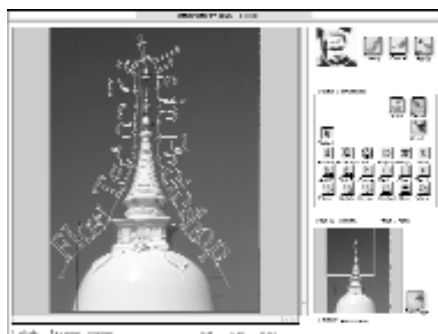
TEXTISSIMO *Over 700 Stunning Effects*

More than 750 text effects - (lava, chrome, metal, earth, distressed, etc.) to create unique headlines! The new effect is beautifully blended with the background image. Ideal for web work and multimedia artists. Its effects work inside and around paths or types and can enhance a simple title, banner or button! Textissimo features a very large preview and an advanced zoom and pan to preview one effect at any level of detail without really applying it.



- ◆ Create cool text effects with any TrueType font. Choose from more than 750 libraries - and create amazing effects for your day-to-day jobs and projects, including: vignettes, advanced gradients, drop shadows, textures inside type. Or more complex special renderings such as Cut-Outs, Halo, Glow, Fire, Ice, Bubbles effects etc.
- ◆ Create as many effects as you can imagine! Combine and combine, test, exchange, add operations, merge, blend, etc. When you have it, click Save and add it to the library! You will be amazed by the quality you will get..Textissimo blends the text effect to any background magically.

Textissimo99.95



OTTOPATHS

Flow & Warp Text Along a Path Directly in Photoshop

Flow your text along curves, warp paths on top of your images...OttoPaths is the ONLY plug-in to let you create directly new clipping paths, new selections or even new layers. If you decide to enter a text or flow a text along a path, you can collect an outline text.that may be used as a clipping path.

Flow Text Along Paths

- ◆ Key in your Text and get automatically clipping path out of any Type I or TrueType (Mac or Windows) font.
- ◆ Get distorted Text and flow it along any Paths you create, including curves! Flip your text invert the flow direction, change size independently in X or Y direction, adjust the angle of any character along the path.
- ◆ Adjust the kerning along your paths in between characters

Warp Text or Objects in Envelopes

- ◆ Warp your Paths or Titles inside custom Envelopes. OttoPath comes with a library of 50 envelopes. Create your own in a snap.
- ◆ Get precise warping on top of any Grayscale, RGB or CMYK image.
- ◆ OttoPaths includes a zoom, pan and navigator window controls for fast and easy move around images.

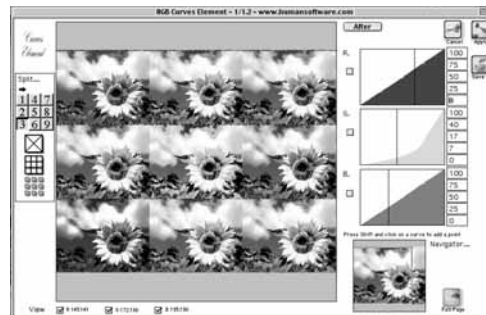
OttoPaths99.95

BOOSTER ELEMENTS

Curves, Density Masking and Color Effects

Booster Elements is a set of three plug-ins that will add curves, masking and duotone effects to Photoshop Elements. The density masking allows you to silhouette difficult images (especially fur, hair and trees) fast and easily and will remove your silhouetting headaches. The mask element features a brush so you can create a mask through a simple brushColor corrections are easy and intuitive.

Booster ElementsCALL



www.bhphotovideo.com

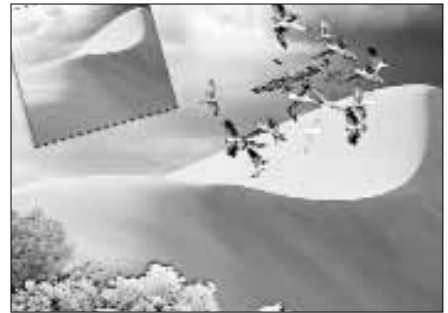
HUMAN SOFTWARE

PLUG-INS

PHOTOSPRAY 1 *Photo-Realistic Brush Effects*

Ideal for graphic artists, web pages designers, architects and many others wishing to paint using natural-looking sprays.

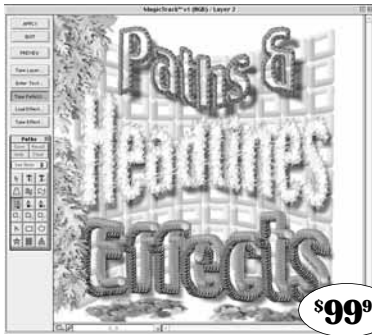
- ◆ Spray pictures on top of any RGB photos or layers
- ◆ Brushes can be adjusted through a variety of parameters including XY resizing, shadow strength, hue saturation and opacity
- ◆ All parameters can be stored as presets, and PhotoSpray will come with dozens of ready-to-use presets. Among them you will have the ability to create water, fire, clouds, add fruits, candies
- ◆ Ideal for photo-realistic painting. A very important tool for all landscapers, architects, multi-media designers
- ◆ PhotoSpray 1 ships with more than 50 realistic-sprays including plants, flowers, leaves, trees, bushes, rocks, clouds, geometrical objects, balls, etc.
- ◆ All natural silhouetted images with shadows. A total of more than 800 individual items.



◆ Optional Sprayettes Vol. 2 and 3 add 100 new sprays each to PhotoSpray. They can also be used as nozzles on Painter
PhotoSpray 199.95

COMPUTER IMAGING

465



MAGICTRACK *Create Stunning Natural Effects*

Create 'nature' text effects with any TrueType fonts. Choose from more than 250 libraries for your day-to-day jobs and projects.

- ◆ Drop shadows, textures inside type, amazing natural distress effects
- ◆ Spray images along any kind of paths, texts, Freehand Text, headlines
- ◆ Features a unique set of effects like images stroke along a path, images fills, shadows, etc.
- ◆ Combine, test, exchange, add operations, merge, blend, etc. Use an unlimited number of layers to combine different effects. When you have it, click Save and add it to the library.

MAGICFRAME

Add or Design Stunning Edges and Frames

More than 400 edges for your images. Combine actions, shadows, blurs, emboss, gradients to create your own very unique edge. Unlimited number of layers of effects.....**99.95**



CLASSICFRAMES

Add More Class to your Photos

The ideal tool to add the final classy touch to your images. The frames provided are exactly the one you would use to hang up expensive paintings and all kind of photos in a gallery or around your home.

Up to 60 beautiful traditional picture frames per volume (comes in three volumes), these frames can be combined across multiple layers, to create infinite variations. Create multiple mats in a snap. No step & repeat artifacts like other plug-ins.....**99.95**

FXPAK

Shapes and Styles



An extensive collection of more than 1000 shapes and 1000 styles for Photoshop or Photoshop Elements. Shapes are paths that can be put in a library. The collection includes animals, arrows, cars, musical instruments, stars, signs and much more. Styles are effects that can be applied at once on a layer or within text.....**CALL**

EXTENSIS

pxl SMART SCALE

One Image and Size

A common problem faced by creative professionals is having to repurpose, for example, a postcard-sized image for a poster size output. Until now, options have been limited for this type of task and usually produced less-than-perfect results. But the concept of scaling images has changed thanks to SmartScale. Powered by an advanced scaling solution, SmartScale creates high quality scaled images by preserving the color and brightness data contained in the original image. SmartScale combines this advanced scaling technology with Extensis' intuitive, workflow-friendly interface, making easy to scale images up to 1600% with no discernible loss in printed quality. Since every image is unique, SmartScale gives you the power to refine the scale details, putting control over your end results in your hands.



- ◆ No other scaling product offers SmartScale's powerful array of tools:
- Interactive scaling — preview different scaling options in real-time
- Detailed scaling — refine the quality of your scaled image by controlling the overall sharpness, edge contrast and edge detail
- Crop tool and Crop palette — easily and precisely crop images from within the pxi SmartScale window
- ◆ pxi SmartScale allows you to scale an image from a file on disk without ever actually opening the file in Photoshop, saving valuable processing time.
- ◆ A signature of all Extensis products, pxi SmartScale is intuitive and easy to use. The powerful scaling technology is coupled with familiar floating/dockable palettes, traditional crop, magnification, and hand tools, along with a full screen preview, and easy image navigation.
- ◆ You can password-protect any image you choose by saving it in as a protected file using the Pixellive file format.
- ◆ Because SmartScale is a true Photoshop plug-in, your workflow doesn't skip a beat. Seamlessly access all of SmartScale's powerful scaling features directly from your Photoshop application.



PHOTOFRAME *Stunning Border and Edge Effects*

Sometimes, plain rectangular images need jazzing up with a custom frame or border. But making frames in Photoshop has always been a tricky process limited to advanced Photoshop users. Fortunately, an easier way has arrived. Now you can unleash your creativity to design unlimited high-quality image frames and borders for your images. Combine and customize any of the over 1000 natural and digital frames or create your own original frame. Experiment with edge effects, colors, blend modes, shadows, textures, bevels and much more to discover the perfect border for your photos.

- ◆ Use the included frames or create your own. Easily adjust its color, opacity and more, distort its edge, and add special effects such as shadows and glows.
- ◆ Includes over 1000 professionally designed natural and digital frames that you can combine and customize.
- ◆ Create your own custom image frames and edge effects interactively with Instant Frame and Instant Edge. Save your custom frames to use again and apply immediately from Photoshop.
- ◆ You can distort frames - combine and adjust wave, triangle, sawtooth, random, brush, diffusion and cleanup effects to customize your frame.
- ◆ Adjust your frame with special effects including drop shadows, glows, bevels, textures, blur, noise, opacity, blend modes and more.
- ◆ Save your customized frame settings and apply them to images directly from Photoshop without needing to launch PhotoFrame.
- ◆ PhotoFrame encourages creativity through playing with an interface that lets you experiment to discover the perfect results. Real-time previews and interactive controls let you design as you go while your frame is processed in the background.
- ◆ Import frames from any Auto F/X Photo/Graphics Edges volume. Load and save as JPEG files for fast and easy transfer.



EXTENSIS

PORTFOLIO 6

Extensis Portfolio 6 takes over the grunt work of getting and staying organized by creating a visual database from your selected files and folders. Portfolio provides folder monitoring, database management, thumbnail previews, streamlined cataloging and much more to help you organize, find and distribute your files with ease. The Portfolio Express floating palette lets you access your cataloged files from any application so you can find and use what you need as fast as possible. Portfolio's Pro Photo Raw image filter, a free add-on to Portfolio 6, allows Portfolio to import, thumbnail and preview Raw files generated by high-end digital cameras from Nikon, Olympus, Kodak, Canon and Fuji.



- ◆ FolderSync monitors when files are added, deleted or modified. One click synchronizes your files on disk with your Portfolio catalog, keeping you up-to-date with minimal effort.
- ◆ With Portfolio, your recently used catalogs are just a click away. Simply select your desired catalog from the pop-up menu that you can access right from the Mac OS X Dock.
- ◆ Access your files from any application with Portfolio Express. Find, use, edit and apply your files from the floating palette, including dragging files to import them into applications such as QuarkXPress and Adobe Photoshop.
- ◆ Catalog any file, folder or disk without first launching Portfolio. You can add items to a catalog directly from the system using the contextual menu.
- ◆ Cataloging new items combines and streamlines several repetitive tasks: move or copy file(s) to a new location, rename each one, assign keywords and more, all in a single step.
- ◆ Create Web pages from catalogs easily from several professionally designed templates, without knowing HTML. Advanced users can customize the templates or create their own. Preview the results in a browser to see your pages in advance.
- ◆ Prepare your distribution CD in one step: gather your files, create a new catalog and include the royalty-free Portfolio browser for easy viewing.
- ◆ Digital camera users have never had it easier. Automatically copy and rename all images from the camera's storage media. If available, all metadata such as date/time, exposure, shutter speed and more is automatically stored into custom Portfolio fields. Rotate groups of original JPEGs all at once.
- ◆ Customize the visual preview of your catalog (fonts, colors, borders and more) and save the settings for fast application later. Fast Catalog Searches
- ◆ Search any combination of catalog fields to quickly locate your file(s), without dialog boxes that get in your way.
- ◆ Add, replace, delete or empty records with ease with Portfolio's database management tools. Make global changes, create placeholder records, search and replace specific data, and much more.
- ◆ Email any cataloged original file directly from Portfolio, using default email client.

PHOTO IMAGING SUITE

The Extensis Photo Imaging Suite is a collection of image and workflow-enhancement tools for the professional and aspiring photographer. The Suite enables today's photographers to digitally catalog and distribute their work, as well as quickly and intuitively scale, mask, enhance and add border effects to images in Adobe Photoshop.



- ◆ Five applications in the bundle (all Photoshop plug-ins except Portfolio), featuring:
 - Portfolio:** cataloging, archiving, and keyword searching of your digital image library; includes support for Raw image files from the most popular, high-end digital cameras
 - pxl SmartScale:** size-up images to 1600% of original size with no loss of printed quality
 - Mask Pro:** masking and selection tools delivering superior, real-life results
 - PhotoFrame:** add stunning border and edge effects to your digital images
 - Intelligence:** quick color correction and enhancements for your digital images ∑

PLUG-INS

VISUAL INFINITY

Grain Surgery

Grain Surgery is a set of specialized filters designed to remove, add or match film grain and noise in digitized images with minimum loss of sharpness of the image. It is also effective in removing halftone patterns from scans of printed material, which makes it an extremely useful tool for both pre-press and Web Publishing. Applying the Remove Grain tool also generally results in a significant reduction in file size, an added bonus for Web and video streaming applications. An industrial-strength set of tools, Grain Surgery is designed to handle images of any size, and to give the professional user full control over every aspect of grain manipulation process.



Remove Grain

- Sophisticated process removes grain with minimal loss of sharpness
- Cleans up digital camera noise
- Removes halftone patterns from scans
- Sophisticated process removes grain with minimal loss of sharpness
- Cleans up compression artifacts
- Handles images of any size
- Reduces file size for web applications

Add Grain

- Presets match popular film stocks
- Control grain size, intensity and color
- Choose color or monochromatic noise of any tint
- Manipulate the grain in each channel separately
- Seamlessly blend photos and digital images

Match Grain

- Extract the noise from a source image
- Apply a selected noise pattern to a target image
- Duplicate the noise exactly or modify it as needed
- Automatically compensate for existing noise in the target image
- Essential for compositing tasks



DIGITAL DOMINION *Cinematte*

Cinematte brings the power of Hollywood style blue and green screen compositing to the desktop computer. With an astounding combination of digital blue screen compositing technology and dedicated image processing routines you can perform compositing miracles! Digital Dominion's amazing Photoshop plug-in allows you to flawlessly composite people or objects photographed against blue or green screens into stock photographs, 3D rendered backgrounds, and more.

Whether you work in the print industry, video, or film. Cinematte's power and versatility will instantly make it an indispensable part of your toolkit.

Easy Digital Clip Art

Create photographic layouts easier than ever. Cinematte creates perfect transparencies around people, animals, and objects with ease. These transparencies can be used to composite in other artwork on other layers or you can 'try out' various backgrounds to make your model shoot more exotic!

Advanced Controls

With options as Correction, Matte Choking, Matte Blur, Protection and Light Color you can color correct for an improperly lit blue screen, adjust the matte transparency for a better composite, protect and even correct the color of the lighting. A real-time preview shows you exactly what you're doing, eliminating the guesswork.

Hollywood-style Blue Screens

Unlike other methods of background removal, Cinematte can easily maintain fine details such as hair, smoke, glass and transparency. Both blue and green screen compositing are supported in one interface so you can choose the background that's right for your needs. Easily suppress blue spill and protect the color integrity of your foreground subject

Fast Shadows & Strange Glows

Drop shadows are no problem with Cinematte. A simple technique allows you to place a perfect drop shadow wherever you need it. Want to surround your foreground object with a strange glow or simply outline them to stand out from the background? No problem.



ONE HOUR FREE PARKING

AT 349 W. 34th STREET (with purchase of \$100 or more)

PLUG-INS

DIGITAL ELEMENT

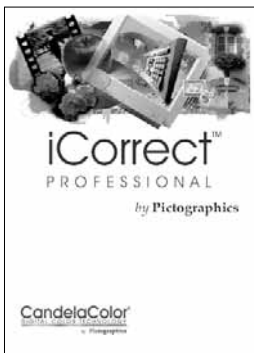
Aurora

Aurora allows PhotoShop users to add natural elements to any 2D PhotoShop image to enhance an existing picture or create new content from scratch. Ideal for landscape architects, web designers, and creative content / graphic design specialists, Aurora offers a range of interfaces that span from fine-tuning layered cloud effects with multiple point-lights to creating entire scenes from scratch with the press of a button. Compatible with PhotoShop 7 and available for PC and Mac (including Carbon version for OS X and PhotoShop 7.0), Aurora comes with a full on-line manual and extensive tutorials that teach every aspect of its use.

- Sky system with gradient allows clouds to be displayed at any angle and on multiple layers
- Sun and stars effects
- Volumetric, ambient, and point-source light
- Water with reflections
- Haze, as well as other atmospheric effects
- Dozens of quickly-modifiable pre-set templates that make creating a scene easy
- Scene variation tool (The Variator) makes creating new, original content fun and simple.



- ◆ Interactive real-time preview automatically updates during the editing progress. The camera controls allow easy navigation in a virtual 3D world.
- ◆ Aurora's interface options makes it easy to learn the software as well as allowing seasoned professionals real control.
- ◆ Aurora comes with huge amount of presets and templates that save time on the initial stage of a project. Users can save their own presets and expand existing libraries.
- ◆ Aurora includes a revolutionary technology called Variation Wizard. The Variation Wizard lets you quickly generate limitless original content with just one click!



PICTOGRAPHICS *iCorrect*

Revolutionary tools for color correcting all of your digital pictures. Whether they come from a digital camera, scanner, picture CD, or an online photo sharing site, iCorrect software will help you make the color right. iCorrect products give you a new method of color correction based on direct interaction with the image. By simply clicking on certain reference colors within your picture, iCorrect products perform a global color correction. With iCorrect EditLab, you have even more tools for precision color editing. Now you can make the color even better!

Available in three versions:

- iCorrect 4.0** — stand-alone application for Windows.
- iCorrect Professional 3.0i** — plug-in for Macintosh and Windows ...**79.00**
- iCorrect EditLab** — plug-in for Macintosh and Windows ...**99.00**

Plug-ins are compatible with Adobe Photoshop and Photoshop Elements, Photo Deluxe, Jasc Paint Shop Pro 7 and Deneba Canvas 8.

	iCorrect 4.0	iCorrect Professional 4.0	iCorrect EditLab
Auto Black/White Point	✓	✓	✓
Brightness/Contrast Control	✓	✓	✓
Saturation Control			✓
Hue Selective Color Editing			✓
Color Cast Removal (neutral balance)	✓	✓	✓
Memory Colors (skin tone, sky blue, foliage green)	✓	✓	✓
Memory Colors (preference adjustment)		✓	
Memory Colors (add custom colors)		✓	
Zooming			✓
Color Depth 48-bit (16-bits per channel)	✓	✓	✓
Photoshop RGB Working Space	N/A	✓	✓
Create ColorCircuits		✓	✓
ColorCircuit Batch Processing		✓	✓

PHASE ONE

C1 CAPTURE ONE DSLR

Workflow Software for Digital SLR Cameras

The press photographer needs to capture the perfect image in a matter of seconds. The social photographer needs to capture the one image that truly reflects a client's personality, whereas the fashion photography is about making the job a wrap before the model leaves the set. Common for all of them is getting the image ready for print in time. This task requires flexible, intuitive and user-friendly software. It requires: Capture One.C1 (Capture One) is a workflow software that integrates perfectly with your Canon EOS-1D/Ds and Nikon D100 digital SLR camera and enables full control over your images from capture to print.



The process is straightforward: Once the images are captured they are opened in the software. Here you can verify exposure, focus, sharpness, make image adjustments and get instant feedback on the screen. Crop, size, apply color management and process the image and send straight to the editorial office, ad agency or printer. A true workflow solution Capture One matches the high demands of the modern, professional photographer. You can create print-ready images with amazing quality by means of a few simple steps saving you a great deal of time and effort. As an extra bonus you get access to Phase One's image processing algorithms, which deliver the highest image quality in the respective CCD or CMOS sensor class.

FEATURES

- ◆ Raw image data control with proprietary image processing that guarantees sharp, clean images and accurate color rendition.
- ◆ User-friendly and intuitive interface optimized for desktop as well as laptop computers.
- ◆ Image processing is conducted in the background without affecting computer performance.

File Management

- ◆ Images retrieval from either a storage card or directly from the tethered camera.
- ◆ Built-in folder browser that makes navigating through image folder extremely easy.
- ◆ Tab-based capture collection with image thumbnails that are easily copied, moved or deleted.
- ◆ Fast image archival with the ability to write CDs directly from the software, easily print contact sheets or create of HTML-based index pages for web.

Image Editing with Instant On-Screen Feedback

- ◆ Film curves & tonal range (levels & curves).
- ◆ Exposure & contrast adjustment.
- ◆ Distortion (barrel, pincushion, perspective, rotation).
- ◆ Focus & sharpness (USM) verification in full resolution.

Color Management

- ◆ ICC-profiles tailored for multiple output processes (Print, Web, Proof). Output in B/W, color or sepia.
- ◆ Color Edit option for enhancing current ICC profiles.
- ◆ Image processing: Batch processing of multiple images in TIFF or JPEG format.
- ◆ Prepare and process images for three purposes in one single operation: Print, proff, web.
- ◆ Image cropping, scaling & sizing.
- ◆ IPTC information option and full integration

PLUG-INS

REINDEER GRAPHICS OPTIPIX

Image Enhancement Tools for Digital Photographers

Optipix is a suite of plug-ins for enhancing digital photographs. Whether you have a digital camera, film scanner, or flatbed scanner, you will find Optipix to be an invaluable tool for improving the appearance of your photographs. Plug-ins include:

COMPUTER IMAGING

471

FEATURES

Auto Contrast

This is a "mini-enhancer" that works in both 8 bit and 16 bit modes. Auto Contrast enhances underexposed or overexposed images optimally without affecting image color. Auto Contrast is also good for the final contrast tweak for a well-corrected and adjusted image that has a full tonal scale.

Blending Exposures

The Blend Exposures plug-in uses two aligned images that have different exposures to create a new image with greater detail in the range from highlight to shadow than either of the two original images.

Image Averaging

Average multiple images to reduce the noise in your images. Sometimes, two images are not enough to get the range of contrast you'd like to see. You might, for example, have an exposure bracket sequence and want to see the average of the entire sequence.

Safe Sharpening

Attempts to preserve or even fix color information while enhancing edges. As a side-effect it also enhances noise, but generally not color noise. The "blue noise" that is so typical in a digital image is reduced while the edges in the image are enhanced.

Image Alignment

In order to perform image blending and image averaging, two (or more) images have to be aligned. Offers methods for aligning 8- and 16-bit images using layers

Nudge

Move your 8 and 16 bit images in sub-pixel increments in order to perfectly align two exposures of the same scene. (Photoshop function works in whole pixel increments.

Photoshop Actions

Since Optipix allows you to record the values you've entered manually in the Photoshop Action, you don't have to enter them again for each successive image.

Digital Album Design— The Future of Wedding Album Design

Design pages that blow your brides away while creating albums that will make you the envy of your competitors

Using your computer and Photoshop to access an infinite number of page combinations, you can create a totally unique album for each bride. Designing albums has never been more creative.



Shooting totally digital, you eliminate film and developing costs. By using Digital Album Designs to create albums, you reduce the amount of prints, while increasing the amount of images.

Increase your prices— produce wedding albums that brides can't say no to.

Package Includes:

- Training Video
- 10 Different Backgrounds

\$399⁹⁵

- Over 150 different page templates on 7 CDs

ORDER & INFO. (212) 444-5027 • FAX: (212) 239-7770 (800) 947-7008
1-800-947-9927 • www.bhphotovideo.com



NIK MULTIMEDIA

NIK SHARPENER PRO!

COMPUTER IMAGING

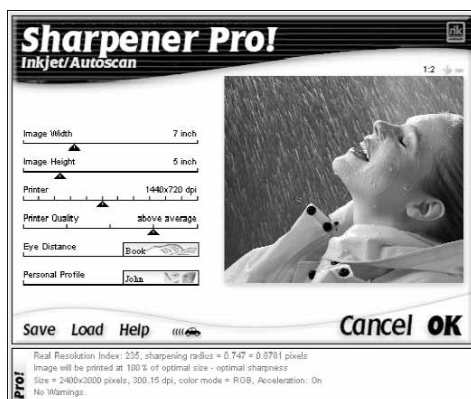
472

Image Sharpening Software for Printing

*nik Sharpener Pro! is award-winning sharpening software for print enthusiasts and professionals. Available in two versions, **nik Sharpener Pro! Inkjet Edition** is designed to optimize prints for all inkjet printers, including small, medium, and large format printers, while **nik Sharpener Pro! Complete** works with all print processes (inkjet, photographic, laser, dye-sub and LED). Sharpen all of your images optimally and to the same degree every time in just seconds. Sharpen images accurately and quickly using inputs such as an image's size, its source, the printer's resolution, etc. The software then*



analyzes an image to determine how to optimally sharpen it. In doing so, it considers an image's clarity, level of detail, the colors in the image, as well as the image's characteristics—in order to protect these components and to maintain the original photographic qualities. Sharpen images for any print size, receive warnings when images have insufficient detail or low dpi, sharpen based on the viewing distance of the image, view the "Real Resolution" clarity index of an image, and much more. Inkjet Edition also includes a bonus sharpening engine and a separate interface for sharpening Internet and screen viewed images.



Optimal Sharpening for Each Individual Image

They utilize a unique and effective feature that enables the program to automatically sharpen an image based on the individual characteristics of an image. The "Autoscan" process automatically analyzes the image to optimally sharpen the image considering its colors, detail, resolution (dpi), and the image's quality. All output and print processes in nik Sharpener Pro! include an "Autoscan" version of calculation engine for sharpening an image for any type of print. By utilizing this unique feature, the program is able to apply the right amount of sharpness to an image in a selective fashion to optimally sharpen each image while maintaining its photographic qualities.

Real Resolution for Images

Real Resolution clarity index is another unique feature that not only aids in sharpening but also provides valuable information to assess an image's quality. The Real Resolution clarity index provides a rating of the image's overall quality, considering internal image variables, including detail, clarity, focus, color, and dpi to provide a consistent basis for image analysis. The Real Resolution clarity index provides a rating between 1 and 600 for each image. Ratings for most images, however, typically fall into a range between 100 and 300. A higher Real Resolution rating from the original, unsharpened image indicates that the image contains more image information, often leading to more detail in print.

Protecting and Maintaining Photographic Qualities

nik Sharpener Pro! utilizes the most effective combination of features to protect an image while sharpening it. nik Sharpener Pro! contains various features for assessing the quality and overall characteristics and then protecting color transitions, shadowing, anti-aliasing, and specific types of detail in order to maintain an image's original photographic qualities of the image. This feature is integral to providing a natural look.

Integrated Warnings: Information Before You Print

Includes a valuable analysis feature and tool for ensuring great images. An advanced warning system warns when the clarity or resolution (dpi) for the current image is insufficient to print the image using the specified parameters. This system allows users to make decisions with regard to how large they may want to print the image, should they enlarge or "scale" that image, should they alter how image will be printed, or might they want to rescan or reshoot the image. When reviewing the warnings found in the lower portion of the nik Sharpener Pro! screen, the fourth line of the Image Information Area provides important warnings that alert you if the image has insufficient resolution or clarity for printing that image, considering the parameters set in the interface.



www.bhphotovideo.com

NIK MULTIMEDIA

NIK SHARPENER PRO!

nik Sharpener Pro! Home Edition

The award-winning sharpening software is now available for the home and office user. Like a pro, you can easily sharpen digital photos and scanned pictures up to 8.5 x 11" for any home inkjet printer. And for those who upload their digital pictures to online photo printers such as Ofoto.com, Shutterfly.com, and Snapfish.com, the nik Sharpener Pro! Home Edition has a special sharpening process and easy-to-use interface that lets you sharpen small format images in seconds (up to 8 x 10") before uploading them for printing.

	Complete	Inkjet Edition	Home Edition
Any Inkjet Printer	Yes	Yes	Yes
Color Laser (All continuous toning printers Dye-sub, Fuji, Light jet, Lambda)	Yes	No	No
Offset	Yes	No	No
Screen / Internet	Yes	Yes	No
Online Photo Processing	Yes	No*	Yes
Print any size up to 157" x 157"	Yes	Yes	Up to 8.5 x 11"
RGB, CMYK, Lab, Grayscale	Yes	Yes	RGB Only
Real Resolution Indicator	Yes	Yes	No
Image Quality Warnings	Yes	Yes	No
Size Warnings	Yes	Yes	Yes
Resolution Warnings	Yes	Yes	No

*with upgrade

COMPUTER IMAGING

473

NIK COLOR EFEX PRO! *Digital Photographic Filters*

nik multimedia Inc. applied leading-edge technology to create powerful and versatile digital photographic filters. nik Color Efex Pro filters contain a proprietary advanced color treatment system for natural photographic enhancements, as well as being adaptive in their application, applying the enhancement based on the previous filters applied or changes to the image. This feature becomes increasingly important since applying filters in a different order will provide you with more control over your images, as well as more options for great, natural photographic enhancements.

Enhance light and color in an image with easy-to-use sliders, preview your image immediately with a "grab and inspect" preview window to instantly see your images, rotate selected filters 360° for optimal lighting effects and much more.

nik Color Efex Pro! Photo Classic Set

The Photo Classic set offers a collection of traditional photographic filters ideal for a variety of image enhancement applications. Give that image just the right amount of "sunshine" using the Sunshine filter, warm-up a portrait or an outdoor photo with the Skylight filter, or enhance a sunset or landscape image using a variety of pre-set graduated filter or create your own custom graduated filter. The Photo Classic Set is ideal for photos taken indoors and outdoors. The Advanced Color Treatment system in nik Color Efex Pro adjusts colors and light within the image to preserve and enhance the natural photographic characteristics of each image.

nik Color Efex Pro! Photo Design Set

The Photo Design Set combines traditional and innovative digital filters for enhancing and controlling light and color in digital images. Use the Polarization filter on a sky scenery photo to enhance the natural shades of blue while enhancing cloud and shadow definition. Apply the most powerful black and white conversion filter to a color image and control shadows, highlights, and tonality of the black and white image. Create soft, diffused light in an image with the Midnight filter series. Soften an image and control light with the Midnight Filter. The Design Set is ideal for a variety of image types, including portraits, nature and outdoor photography.

nik Color Efex Pro! Photo Artistic Set

The Photo Artistic Set is the creative filter set for stylizing and creating moods in your photos. Create antique and film-like images with filters like Midnight (sepia), Old Photo, Monday Morning (sepia) filters, or simulate photo paper color effects for realistic darkroom effects with the Color Stylizer.

The Photo Artistic Set combines a collection of selected classical photo filter enhancements with an array of artistic photographic effects. A variety of filters in the Photo Artistic Set enable the introduction of sepia tones and the addition of grain to images. Use the filters in the Photo Artistic Set in combination or individually for great photographic enhancements.

nik Color Efex Pro! Photo Abstract Set

The Abstract Set combines both modern and traditional filter effects that enable you to transform images into artistic, abstract creations of the original. Apply a conventional darkroom solarization effects by choosing one of six methods of solarization while controlling the elapsed time of exposure. Apply the Infrared filter to an image to simulate a view of the image through a thermal camera. Convert an image into a somber, subdued image while controlling grain and light in the image with the Monday Morning filter and many more.

ORDER & INFO. (212) 444-5027 • FAX: (212) 239-7770 (800) 947-7008
1-800-947-9927 • www.bhphotovideo.com



LIZARDTECH

GENUINE FRACTALS

COMPUTER IMAGING

474

Print Superior Quality Image Enlargements Without Any Degradation

Digital imaging professionals have made Genuine Fractals plug-ins the preferred software solution for creating high-quality images within Adobe Photoshop. An indispensable tool for photographers, graphic artists and digital imaging professionals, Genuine Fractals enables you to create resolution-independent images from any size file and lets you print superior quality enlargements without any degradation in image quality. The latest version features an improved user interface, easier batch encoding and increased application and platform support. No matter how you use digital images, Genuine Fractals makes using them easier.



Create Multipurpose Images

Genuine Fractals enables you to increase the resolution and size of your images without degrading the image quality. Supports RGB, Grayscale, Indexed Color, Duotone, and Multichannel color modes.

Two Encoding Modes

Two image modes let you save files for the best output quality or most storage efficiency.

- ◆ Lossless mode creates a file about half the size of the original and can be opened exactly to its original size with absolutely no loss.
- ◆ Visually Lossless creates a file an average of one-fifth the original size and still produces excellent quality enlargements.

Save Time, Money and Storage

Why scan and work on high-resolution images when you can get the same results from your original? Save the expense of scanning high-resolution images and save time editing those images in Photoshop. With Genuine Fractals you can start with a low- to medium-resolution image and, when you're done retouching or color correcting, just choose File>Save As to quickly encode the image in Fractal's scalable resolution-independent format. Working with smaller, more agile images saves time, money and storage space throughout your workflow.

Repurpose Your Images

After you increase the size of your digital camera and desktop scanner output, you can print the results on your desktop or wide format printer or on an offset press. If your megapixel digital camera images look great at 4x5 but you want an 8x10 or 16x20, Genuine Fractals can make the enlargement look as sharp as the original. And if you're working with 15-18MB digital camera-back or desktop scanner captures, you'll be amazed at the quality of the output at 200-300MB and larger. Regardless of your image source, Genuine Fractals enables your images to be easily repurposed from one job to the next with guaranteed quality every time.

Available in three versions, Genuine Fractals 2.0 LE, Genuine Fractals 2.5 and Genuine Fractals PrintPro 2.5, they all provide easy encoding and rendering for all RGB, Multichannel, and Grayscale images. With the exception of Genuine Fractals 2.0 LE (file size limitation of 10MB input and 64MB) they can output any file size from a single encoded file, up to 600% without image degradation. The top of the line PrintPro 2.5 adds CMYK, CIE-Lab and Multichannel (up to 16 channels) color spaces.

	Genuine Fractals PrintPro 2.5	Genuine Fractals 2.5	Genuine Fractals 2.0 LE
Create-Edit-Print			
Preview imagery before encoding	✓	✓	✓
Resize and crop .STN images	✓	✓	✓
Photoshop and Photoshop compatible API plug-in	✓	✓	✓
Print imagery at any printer resolution	✓	✓	✓
Convert / Encode			
Renders in RGB, Grayscale	✓	✓	✓
Renders in CMYK, CIE-Lab	✓		
Encodes in 2 modes (lossless & visually lossless)	✓	✓	✓
Convert any standard image file format to .STN	✓	✓	✓
File size limit (10M input/60M output)			✓
View			
View Images	✓	✓	✓

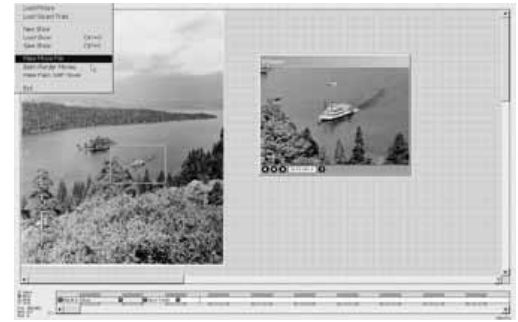


IMAGEMATICS

STILL MOTION CREATOR

Multimedia Animation Tool for Web Developers, Designers and Photographers

The StillMotion Creator allows you to create pan and zoom animations from still images that have been scanned, taken with digital cameras or in existing image files. The software mimics the actual functionality of an animation camera stand, where you can apply pan, zoom and rotate to images. The completed animation can then be output in multimedia formats including: SWF (Flash 5 and 6 compatible) as Internet ready AVI, as high-resolution media files for professional video and direct support for HDTV formats. Easy to use, you can create virtual tours, bring to life presentations with dynamic image effects, create slideshows for Internet presentation with professional transitions, manage and display panoramas and create new products and offering from still images.



- ◆ StillMotion Creator lets you animate from the camera (viewers) point of view. This animation technique is used in almost every news show, documentary and commercial. A famous example of this is the Ken Burns documentary on the Civil War.
- ◆ A slide show containing up to 64 color and black and white images (up to 4000 x 4000 resolution) may be easily created as a Flash file for web presentation or as an AVI file for use in a video production.

- ◆ Utilizes keyframe animation, supports the most popular file formats (TIFF, JPG, BMP and TGA) and includes a sound track.
- ◆ Functions include: pan, zoom, rotate, fade and hold. Tracking paths can be edited interactively, may be straight lines or curves and the speed and acceleration of the movement is easily controllable.
- ◆ Simulates the functionality of an expensive animation stand for professional movie making effects.

StillMotion Creator

Standard version SWF output only (for web publishing and sharing of images)**99.95**

StillMotion Creator Plus

Same as above, plus SWF and AVI files below 400 lines horizontal resolution**149.95**

StillMotion Creator Pro

Same as above, plus SWF and AVI Files in broadcast and HDTV formats (over 400 lines of resolution)**249.95**



Test Strip—Color Correction, Proofing and Calibration Plug-in for Photoshop

Best described as Adobe Photoshop Variations on steroids, Test Strip shows you a comparison preview of adding or subtracting colors, density, contrast, or saturation in as little as 1% increments. You can easily change the orientation and the number of strips that are displayed. If you want to create and print a test proof, it's as easy as clicking the Make Test Proof button. Test Strip features full-Screen previews, zooming, scrolling, unlimited undos and edits, a History Palette, and a Before & After Preview screen. New features include Gels, Metamorphosis, Step & Repeat, Movable Current Strip, new layout choices, Highlight, Midtone, and Shadow correction, Grayscale editing, and much more.

- ◆ Five panels to help simplify and isolate different color correction tasks:
 - Two panels for removing color casts, (Ring-Around and the One Color Panel)
 - Exposure Panel for brightness, contrast, and dynamic range adjustments.
 - Saturation Panel, and a Before and After Panel with a built-in history palette.

- ◆ Say good-bye to Photoshop's undo/redo toggle. Test Strip's Before and After preview displays a full-page, split-screen comparison of your changes.
- ◆ In addition to unlimited undos and redos, any step can be selectively changed without effecting any other step in the sequence. You can also export the list and keep a printed copy.

- ◆ To insure that your output perfectly matches your monitor, the foolproof Test Proof and exclusive "One Minute Calibration System" is included.
- ◆ Color, density, contrast, saturation, as well as highlight, midtone, and shadow controls with accurate adjustments in as little as 1% increments.

ORDER & INFO. (212) 444-5027 • FAX: (212) 239-7770 (800) 947-7008
1-800-947-9927 • www.bhphotovideo.com



LASERSOFT IMAGING

SILVERFAST AI

SilverFast Ai is high-end scan and imaging software (stand-alone or plug-in) that sets the standard for ease of control and sophistication for desktop-scanners and digital cameras. Available for more than 120 scanners and digital cameras under Mac (including OS-X), Windows 95, 98, 2000, and Windows NT operating systems. SilverFast Ai combines a very intuitive user interface with a sophisticated and professional control. Beginners and professionals will appreciate the unique real-time controls and the intelligent automatic functions as well as the possibility to manually adjust the image at any point. Predictable color from the SilverFast Ai preview gives imaging and color reproduction a new dimension securing the correct workflow with the ScanPilot. The professional user can adjust any operation via numerical input and can precisely monitor the results using an online densitometer. SilverFast Ai enables any level of user to get brilliant results quickly.



FEATURES

- ◆ All image manipulations such as gradation, global and selective color corrections are applied by a slider control. This control updates the image in real time as you drag the mouse.
- ◆ Ai stands for Artificial Intelligence. At a click of a button, Ai's automatic image enhance button can optimize your image. With image type pre-selection, the intelligence of SilverFast's automatic image can be accommodated to different motives of the image (i.e. a sunset)
- ◆ Strong hissing or noise can be generated by some scanners in the shadow areas of images. SilverFast's multi-sampling feature removes the noise by averaging it out across the multiple scans performed.
- ◆ Drag & drop your scans right from the SilverFast Ai prescan window directly to another application such as MS Word or the Mac scrapbook or desktop!
- ◆ Match the preview image to the final image in Photoshop—there is no color drift with SilverFast Ai's color management system. You simply set SilverFast to keep its working space identical to Photoshop's. You can even embed the working color profile into Photoshop.
- ◆ Using ICC-Profiles for the scanner, monitor and printer, and the capability to embed color profiles into your final scans, SilverFast Ai enables professional color accuracy using the latest OS technologies (ColorSync 3 and ICM 2.0 compatible). Rendering intent is another option, giving you control on how your profiles are applied to the image. This can be further enhanced using the IT-8 calibration option
- ◆ Supports 4 file output formats: TIFF, EPSF, DCS, and JPEG. You can either scan or batch scan directly into these file formats, bypassing Photoshop completely.
- ◆ The scanner preview in SilverFast Ai corresponds 1:1 with the CMYK-preview in PhotoShop—making production of perfect color-printing as easy as ever!
- ◆ Creation of a selective color correction mask means you aren't restricted to affecting your entire scan frame. Instead an individual correction can be applied to a small portion of the image, while the rest of the image is untouched.
- ◆ Display up to 4 densitometers allowing 4 unique measurements of the image to be displayed simultaneously.
- ◆ Allows the prescan window to be permanently converted to a CMYK color simulation. With softproof switched on, a single color separation can be represented at a time. This allows you to view the individual C, M, Y, K channels.
- ◆ Supports inches, centimeters, picas, points, and pixels. Points and pixels are really handy for web designers.
- ◆ Sharpness functions are optimized so that high-end sharpness quality is gained. Unsharp-Masking-Preview allows the sharpness of the final scan to be monitored. This guarantees the user to get a maximum of professional sharpness without trial and error.
- ◆ As with all other image enhancement functions, it's best to do the unsharp masking function in SilverFast where the highest bit-depth is obtained. SilverFast allows a before/after preview to see the best results right before your eyes.
- ◆ SilverFast Ai histogram can be split into three color channels. This allows for easier viewing and adjustment image-wide. Full control over the image, allows you to make the finest adjustments.
- ◆ Allows you to control the intensity of the removal of the color cast. Simply adjust the slider to set the intensity of the removal. Want to reduce the cast of your image, yet preserve some of the sunset? This is where slider works well.

QuickTime Movies Online Training

SilverFast Ai is the first imaging software to supply 1:1 Quicktime movies with sound as online training. The user can instantly understand and know how to operate the function exemplified by the movie. Sophisticated software has never been easier to use.



EQUIPMENT LEASING AVAILABLE

LASERSOFT IMAGING

SILVERFAST Ai

- ◆ With intelligent recognition of the colors and extended effective range, just click onto the color you want to correct and SilverFast Ai will distinguish it from others, only changing the specified color.
- ◆ HiRePP (High Resolution Picture Performance) brings extraordinary productivity to processing large (over 500 MB) high resolution images.
- ◆ Adjust and process any negative for optimum results with ability to create your own negative profiles (120+ profiles already contained).
- ◆ SRD (Smart Removal of Defects) dust and scratch removal function can be used during the scan process.

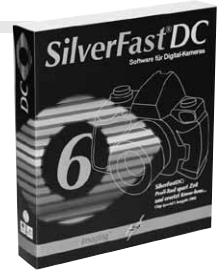


- ◆ ACR (Adaptive Color Restoration) brings back faded out or weak colors with an automatic function. The function's strength can be controlled with a slider. Also too much saturation can be normalized or decreased.
- ◆ SC2G (Selective Color to Grey) enables the controlled conversion from colors to gray. Gives you the ability to clearly distinguish adjacent shades of grey.
- ◆ GANE (Grain and Noise Elimination) substantially reduces artifacts from noise or film grain. Reductions can be controlled in a "before and after preview" with respect to the final image.
- ◆ Color casts resulting from mixed light conditions can be easily eliminated. Up to 4 neutral points can be set, and by means of a special dialog neutral density values can be edited. This powerful tool can be used by just clicking onto the affected area. For fine tuning edit fields showing the "before and after" RGB or CMY values is available.

SilverFast DC

A slightly limited version of HDR. It is designed for 24 bit files, like the ones generated by most digital cameras.

SilverFast DC enables fast and efficient optimization of all non-compressed RGB-Tiff data from the hard disk. Instead of generating a pre-scan, a file is loaded from the hard disk. Images from digital cameras (low- and midrange) will especially benefit from SilverFast's LAB-Unsharp masking, which doesn't sharpen the color noise of single channels, but instead only sharpens the image's edges. Since all steps of processing can be monitored on the preview, the final processing is more or less one operation. Loss in quality due to repeated processing can be kept minimal. SilverFast DC contains all the known features of SilverFast for professional image optimization through an intuitive and flexible user interface giving you full control at one glance! SilverFast DC can also be upgraded with SilverFast JobManagement. This allows you to batch correct many images on the fly, and much more.



MISSION 3-D Photo3-D

By now, many people have experienced the thrill of 3-D movies, yet few have enjoyed 3-D photos. While wildly popular in the 1890's and 1950's, today only a few avid photographers around the world know the secrets of 3-D photography. With Photo3-D it as easy as 1, 2, 3-D! It's a new, exciting and fun way to amaze your family and friends! If you know how to use a digital camera, Photo3-D takes just minutes to learn.



- ◆ The Photo3-D Red/Cyan [RC] glasses are some of the finest 3-D glasses ever made. Unlike other 3-D glasses, which may show red and blue ghosts within anaglyph 3-D images, Photo3-D RC glasses provide sharper, more detailed viewing of your desktop 3-D prints.
- ◆ Creating 3-D photos used to be a difficult process, but no longer! With Photo3-D Mixer simply load your left-eye and right-eye images, mix in color or B&W, focus, and voila! Photo3-D Mixer automatically saves both your regular photos and your 3-D photo, so you have the option to enjoy both.