

Adobe Premiere Elements 8

Video Editing Software

Enhance your stories with professional style. InstantMovie automatically edits together your best clips with coordinated music, titles, over 300 effects, and transitions from the movie theme of your choice. Automatically fix shaky footage and color and lighting problems, trim away all but your best footage, and balance audio elements to give you professional-quality sound throughout your movie. Add sparkle to your scenes from a library of artwork, including fun frames, objects, and animations. When finished, burn to DVD or Blu-ray disc, complete with eye-catching motion menus.



ADPE8.....**79.95**

Adobe Photoshop & Premiere Elements 8

Photo and Video Editing Software Bundle

Now get Adobe's popular video editing and image editing software applications in one convenient suite. Bring all your video clips and photos together in the powerful, easy-to-use, fully featured new Organizer – the hub of your video and photo experience. Now it's easier than ever to find and view your photos and video clips and even protect them with automatic online backup and 2GB of storage. Capture a single video frame; add text, graphics, and other enhancements; and then put the frame back in your movie for a fun or dramatic freeze-frame effect.



ADPPE8B.....**Call or Log-on**



Final Cut Express HD 4 Video Editing Software for Mac

Apple's powerful movie-making package now supports the latest AVCHD cameras, features an open-format Timeline, provides iMovie '08 compatibility, and offers sophisticated effects and filters.



- Capture DV, HDV, or AVCHD from your camcorder
- Export projects from iMovie '08 for a final edit in FCE 4
- Sophisticated transitions, filters, effects, and FXPlug plug-ins
- Create pro audio mixes with multiple tracks and filters • Creature dynamic animated text with LiveType

Final Cut Express HD 4 (APFCE4).....140.99

Final Cut Express HD 4 Upgrade (APUFCEHD1235).....99.00

SONY Vegas Movie Studio HD

Create amazing movies in minutes

Create captivating videos. Add professional pizzazz with transitions, titles, and special effects including green screen and slow motion. Quickly format movies for online sharing sites like Facebook, YouTube and more. Best of all, Vegas Movie Studio HD software is a real-time nondestructive video editor. No matter what changes you make to your video and photos in the software, your original files are never affected.

- Add special effects, transitions, titles, and music
- Zoom, rotate, and pan across photos to animate still images in your movies
- Commemorate special events such as weddings and anniversaries



SOMSHD9000.....**31.95**

SONY

Vegas Movie Studio HD Platinum Production Suite

HD Video Editing, Audio Monitoring & DVD/BD Authoring
Includes everything needed for professional-level video editing, sound design, and DVD/Blu-ray Disc™ authoring. Edit high-definition HDV and AVCHD. Create movies to share on DVD or Blu-ray Disc, portable devices, or online. Vegas Movie Studio HD Platinum Production Suite has integrated tools for video compositing, color correction, and 5.1 surround sound mixing. Use Sound Forge Audio Studio software for precise audio editing and enhance multimedia projects with 400 exclusive music soundtracks. (SOVMSHDP10S).....**84.95**



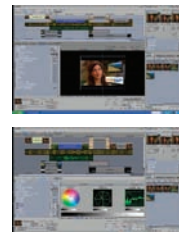
NewTek SpeedEDIT

Resolution-Independent, Multi-Def Editing

Edit directly on native clips without transcoding or pretrimming content with SpeedEdit's unique Timeline. Perform everyday tasks—like clip replacement and segment repositioning—in fewer steps with the natively linked Timeline and Storyboard. Flexible, resolution-independent, multi-def editing from HD/SD to web streams.

- Real-time, full-res HD previews • Real-time up/down conversion
- Speed HQ codec • 4:2:2 colorspace and alpha channel support
- Render in HD for Windows Media HD, VC-1, or Blu-ray/HD-DVD

NESE.....**495.00**



pinnacle Studio HD

Video Editing Software

Make great movies easily with Studio HD video editing software. Use to edit video on most Windows machines. It supports HD video and offers a number of control parameters, including montage themes, transitions, animations, and effects. A drag-and-drop interface allows you to grab photos and videos from your video camera, still digital camera, phone, or computer to create your own high-quality HD movies. Once finished, share your work with friends, family, or the world with Studio HD direct upload to sharing sites like YouTube.

PISHV14.....**39.99**



pinnacle Studio Ultimate

Video Editing Software

Supports HD video and offers a number of control parameters, including over 80 montage themes, Hollywood-style animations and transitions, motion titling and effects. Also supports Dolby Digital 5.1 sound. Once you've created your video production, you can share it in widescreen format by exporting to Blu-ray, AVCHD, YouTube, iPod, Nintendo, and many other export options.

- Use stop-motion capture for animations and fast-motion effects
- Includes fluid image-stabilization technology from Avid that is used in major motion pictures

PISU.....**74.95**



pinnacle Studio Ultimate Collection

Video Editing Software

The collection includes Studio Ultimate software, plus adds a complete set of plug-ins and a Chroma-key green screen for advanced effects, editing and production. Create top-quality movies in HD video, include stunning effects, transitions, animation, and Dolby Digital 5.1 sound, empowered by tools from Avid's professional film-editing products. Then, dazzle your audience when you share your sensations in widescreen format. Sharing options are as limitless as your creativity: from Blu-ray and AVCHD to YouTube, iPod, Nintendo Wii, and more.

PLUC.....**97.95**



pinnacle Studio MovieBox Ultimate Collection

Video Editing Software

Capture, edit and share your story. Includes all the hardware and software you need to capture, edit, share and play back spectacular HD movies. The USB 2.0 device captures SD and HD video from virtually any analog or digital source. You can even record out and convert from your HD home movies to standard definition analog devices, like VCRs and video cameras. The collection includes a complete set of plug-ins and a Chroma-key green screen for advanced effects, editing and production, in addition to feature-rich Studio Ultimate software.

PISMBUC.....**129.95**





Media Composer 5 Production Suite

Media Composer 5 Production Suite offers a comprehensive and powerful set of creative editing tools for even the most challenging film or video production. Offers real-time HD editing, file-based workflows, cutting-edge features, and media management you can count on. It features native support of RED and QuickTime formats (including Apple ProRes and .mov files captured by Canon's DSLRs), Canon's 4:2:2 MPEG-2 codec, support for Matrox MXO2 Mini external monitoring, direct AVCHD import, and a host of other new features. You can edit practically any tapeless format instantly, without having to transcode.

Ideal for offline, file-based editing—in the studio or in the field, use Media Composer 5 to edit films, TV programs, short-form videos, and pretty much any other media you can come up with. The included Production Suite puts even more tools at your disposal: Avid FX, Boris Continuum, Smart-Sound Sonicfire Pro, and Sorenson Squeeze together deliver stunning 2D and 3D titles and effects, music loops, nearly 200 filters, and multi-format export for delivery to disc or the Web.



- Multi-format open timeline with native, direct access to HDV, XDCAM-HD, XDCAM-EX, DVCPRO HD and AVC-I, Avid DNXHD 36 (the perfect solution for HD offline) and uncompressed 10-bit HD in progressive 720p, 1080p and interlaced formats. No need to transcode, even when mixing codecs.
- Sorenson Squeeze and Avid DVD by Sonic (PC only) let you go out to DVD, Blu-ray, or the Web.
- Extensive family of integrated real-time effects from transitions to 2D & 3D effects, moving mattes, tracking, high quality keys and rampable motion effects. Offers stereoscopic editing support.
- Intraframe™ editing with paint, AniMatte™, scratch removal, blur and mosaic
- Access P2 and XDCAM-HD/EX files directly from disc or card, with metadata. Edit the media in its native format and play out or write back directly to disk or card.
- Create offline media files from DI sources (R3D, DPX) using MetaFuze software
- Save time with automatic syncing of audio and video and seamless tracking of timecode, KeyCode, and other metadata.

Media Composer 5.0 for Macintosh and Windows (A/MCS5) **Call or Log-on**



MC Transport



MC Transport provides professional, hands-on control and navigation of applications like Final Cut Pro, Logic Pro, and Pro Tools. From its ultra-high resolution optical jog wheel and shuttle ring to ergonomic transport controls, programmable Soft Keys and integrated numeric key pad, MC Transport offers one-handed access to almost every facet of a project for an unmatched editing experience. Also features EuCon, an Ethernet control protocol providing eight times the resolution and 250x the speed of MIDI, that enables simultaneous control of multiple applications and workstations and allows the MC Transport to connect to any Mac OS X application.

EUMCTRANS **399.00**

MC Control v2

Ergonomic and slim, the MC Control v2, has a 800 x 480 LED-backlit touch-screen that displays all top-level project information, plus allows users to trigger Soft Keys,



solo/mute/record arm tracks, perform surround panning, and more directly from the surface. Eight touch-sensitive rotary encoders offer direct control over everything from panning and gain to editing plug-in and EQ parameters. Dedicated transport controls as well as a data entry wheel can be assigned on the fly to control everything from basic jog/shuttle navigation and zooming to a host of advanced editing functions. Four touch-sensitive motorized faders deliver accurate and smooth mixing, and touching a fader automatically selects and controls the corresponding track. (*EUMCCONTROL2*)..... **1899.00**

MC Color

MC Color is a grading surface that offers detailed control and complete integration with Apple's Color 1.5 software. The slim-line controller attaches to the Mac via Ethernet, and features high-resolution optical trackballs, track wheels, displays, encoders and a host of programmable keys to speed up and enhance the Apple Color workflow. Use standalone or together with other Euphonix media controllers to build a larger, integrated video editing control surface. (*EUMCCOLOR*)..... **1499.00**



Authorized Reseller



Final Cut Studio 3

Consisting of six tightly-knit programs, Final Cut Studio suite ensures seamless integration and file sharing. Travel round-trip between programs with ease—from editing, motion graphics and audio mixing, to color grading and final delivery. Begin with familiar tools, and extend your reach when you're ready. Final Cut Studio's tool kit contains a comprehensive solution to meet any expanding post-production need.

Final Cut Pro 7—The hub of an integrated post-production workflow

- Native editing of HDV, XDCAM HD, DVCPRO HD
- 150+ real-time filters, and effects
- Apple ProRes codec let you edit faster and at higher quality across a wide variety of workflows. In addition to the original ProRes 422 and ProRes 422 (HQ), the family now includes ProRes 422 (Proxy) for off-line editing; ProRes 422 (LT) for projects that require reduced file sizes at broadcast quality; and ProRes 4444 for compositing and digital workflows that require the highest-possible quality.
- Redesigned Change Speed window lets you make speed changes without rippling the sequence
- Support for iChat Theater gives editors the ability to collaborate with clients in real-time. Output your video to iChat Theater and talk while your client watches the clips with you.



Motion 4—Professional motion graphics and animation



See results in real-time as you work. Add reflections and shadows that respond to lights and objects as they pass through the 3D space. 2D/3D multi-plane compositing. Text and titling tools, including an Adjust Glyph tool that lets you distort a single character. Paint tool animates brush-strokes. Offers over 150 filters and effects and 1500 design elements

Soundtrack Pro 4—Audio post-production

- Nondestructive, multi-channel waveform editing
- 5.1 surround sound mixing. Surround Paner dynamically automates and manipulates surround sound positioning
- Automatic Audio Conform tracks, manages and synchronizes audio changes to match your video edit
- Automatically down-mix from surround to stereo
- Over 50 audio effects plug-ins, 1000 surround sound effects and music tracks



Color 1.5—Professional color grading



- Create consistent color and feel with over 35 professional color effects and more than 20 looks
- Preview color grading adjustments at any resolution in real-time
- Chroma key mattes, advanced masking and motion tracking
- RGB resolutions at 4:4:4 with 32-bit float processing

Compressor 3.5—Industrial-strength encoding tool

- Batch processing to SD/HD MPEG-2, H.264, VC-1, WMV, GXF and FLV
- Open a file, publish it to the Web, or send it to your iTunes library.
- Automatically converts source footage to highest quality and optimizes conversion settings for best results • Presets designed for the most common encoding tasks

DVD Studio Pro 4—Powerful DVD authoring

- Create professional DVDs with interactive features
- Built-in Dolby Digital Pro Encoder
- Author SD and HD dual-layer (DVD-9)
- Simulator tests DVD interactivity and scripting
- Prepare industry compliant projects for commercial replication
- Create motion menus with 30+ pre-designed menu templates and transitions



Final Cut Studio (APFCS3Q)..... **799.95**

Final Cut Studio Upgrade from Final Cut Studio 2 (APUFC2FC3)..... **249.95**

Vasst Final Cut Beginner Bundle (3 Volumes):

Learn the basics and how to get the most of your Final Cut Pro editing software with Apple Certified Trainers Richard Harrington and Abba Shapiro. (*VAATFCS1T3*)..... **99.00**



D-Series Miniature Converters

D10CE SDI to Analog Component and Composite Converter

Provides excellent quality 10-bit conversion of SDI to simultaneous component and composite video. Component outputs are user configurable to Y/Pb/Pr, Betacam, or RGB (or composite Y/C). The composite output is configurable to composite video or sync. Has two re-clocked, loop-thru SDI outputs and all functions are user configurable via external dip switches. Exclusive PLL jitter filter/memory reduces the effects of SDI jitter on the output analog video. (B&H# AJD10CE)**499.95**



D10C2 SDI to Analog Component or Composite Converter

Provides excellent-quality 10-bit conversion of SDI to analog component (user configurable to Y/Pb/Pr, Betacam, or RGB) or composite (two composite outputs and an S-Video output) The D10C2 also provides two re-clocked, loop-thru SDI outputs and a composite sync output (component mode). All functions are user configurable via external dip switches. (B&H# AJD10C2).....**443.50**

D10AD Analog Component or Composite to SDI Converter

Provides excellent-quality 10-bit conversion of analog component or composite video to 4 SDI outputs with EDH. The D10AD accepts Y/Pb/Pr, Betacam, or RGB component inputs or composite (NTSC/PAL) and S-Video inputs. 4-Line Adaptive Comb Filter for high-quality decoding of composite sources can be switched to 2 line or notch modes. Video format, AGC mode, color bar generator, and pedestal are user configurable. (B&H# AJD10AD).....**546.95**

D10CEA SDI to Analog Audio and Video Converter

Converts SDI video with embedded audio to 10-bit component or composite video and 4-channel balanced analog audio. Video outputs can be configured as YPbPr, RGB, composite or S-Video. The audio outputs can be wired in a balanced or unbalanced configuration. The 4 audio output channels can be selected as group 1-4 from SMPTE embedded audio. Audio and video output connections are available on a 25-pin "D" subminiature connector – a break-out cable is supplied. Also outputs two re-clocked loop-thru SDI outputs. (B&H# AJD10CEA)**546.95**



D5D Analog Composite and S-Video to SDI Converter

Bring video from time-base corrected analog composite equipment into a serial digital environment. The D5D provides low-cost, all digital decoding of analog composite (NTSC/PAL) or S-Video to SDI. Features selectable 2 or 3 line adaptive comb filter as well as a crystal PLL jitter filter/memory to reduce jitter in each of the three SDI outputs. (B&H# AJD5D)**509.95**

D5DA 1x4 SDI Distribution Amplifier

The D5DA can be used as a low-cost 1x4, re-clocking SDI DA or repeater. The SDI input is re-clocked and equalized to 300 meters of cable. In addition, it automatically adapts to 143, 177, 270, or 360 Mb SDI inputs. (B&H# AJD5DA).....**212.50**

D5CE SDI to Analog Component or Composite Converter

Digital conversion of SDI to either composite or component analog video. Three analog BNC outputs are user configurable to cover a wide range of format combinations including three composite (NTSC/PAL), one composite and S-Video, YPbPr, Betacam, or RGB. Re-clocked, loop-thru SDI output. (B&H# AJD5CE).....**316.50**

D10A Analog Component to SDI Converter with Separate Sync Input (B&H# AJD10A).....**759.95**

D10C Composite Digital (D2/D3) to Composite Analog, or SDI to Component Converter (B&H# AJD10C).....**648.95**

KONA LSe SD Capture Card for Macintosh

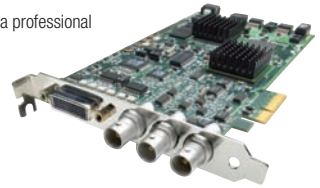
Affordably priced, the KONA LSe is the perfect video capture and playback card for building a professional SD (standard definition) editing system. Configured with a Mac Pro, RAID storage, computer display and video monitor - along with Final Cut Pro - it achieves the same editing quality as an expensive turnkey suite. Kona LSe offers analog video input/output that can be configured as component, composite or S-Video, 10-bit resolution SDI input and two outputs with multi-channel embedded audio support, analog XLR-balanced audio input/output, and AES XLR-balanced digital audio input/output with sample rate conversion.

- Offers direct integration with Final Cut Pro, as well as support Adobe After Effects, Motion and more.
- Uses 12-bit A/D and D/A converters to capture uncompressed 10-bit or 8-bit 4:2:2 formats to QuickTime. Ingest and master to/from Betacam SP and other standard definition VCRs. Also supports capture and playback from compressed SD formats like DV/DVCAM and DVCPR0 25/50.

- KONA control panel simplifies A/V control and also supports a stand-alone mode.
- AJA optimized QuickTime drivers, genlock and RS-422 machine control.

KONA LSe (B&H# AJKONLSE):

With break-out cables and 3-year AJA Warranty with Advanced Exchange.....**Call or Log-on**



KONA LHi SD/HD Capture Card for Macintosh

A non-compromise uncompressed SD/HD video capture and playback card, the KONA LHi allows legacy analog cameras and VCRs alongside the newest 3G SDI and HDMI v1.3a enabled products to interface to the latest PCIe Apple Mac OSX hardware, with integrated support for Apple Final Cut Studio and other QuickTime software applications. The card also features AJA's proven 10-bit hardware-based, realtime, broadcast-quality SD to HD up-conversion, HD to HD crossconversion and HD to SD down-conversion, providing complete flexibility when working with multiple SD and HD formats.

Edit, monitor and master professional quality video in an affordable, easy to use product. Since all of KONA LHi's conversions are hardware-based, they are available all the time—during ingest or playback. Outputs can be configured independently allowing users to have simultaneous HD and SD output—or two different types of HD, 720 or 1080, output via cross-conversion.

- DVCPROHD, HDV, and Apple Dynamic RT Extreme hardware acceleration takes part of the codec processing load off the CPU, allowing more RealTime (RT) effects in Final Cut Pro when outputting.
- 3G HD/SD SDI input/output including support for 1080p 50/60
- HDMI v1.3a I/O w/Deep Color at 30/36 bits per pixel allows full support of the latest 10-bit monitors.
- Capture uncompressed 10-bit or 8-bit 4:2:2 formats to QuickTime as well as Apple ProRes 422, DVCPRO HD and more.

- 12-bit analog component (SD/HD), composite and S-Video input/output
- 2-ch balanced XLR AES digital audio and 2-ch balanced XLR analog audio input/output
- 8-ch SDI embedded audio input/output
- HD/SD Genlock, LTC Input (on Reference input) and RS-422 machine control

KONA LHi (B&H# AJKONLHI): With break-out cables and 3-year AJA Warranty with Advanced Exchange.....**Call or Log-on**



KONA 3 Capture Card for Uncompressed SD, HD, 2K and Dual Link HD

The top-of-the-line KONA 3 steps up from the LHi (except no analog video input, no analog audio input/output and no HDMI) with Dual link HD and 2K support, internal SD/HD hardware downstream keyer and extensive audio I/O support.

- Supports Dual Link 4:4:4 HD-SDI, with full bandwidth 4:4:4 RGB at 10-bits for 1080i, 1080p, 1080PSF and 720p formats. KONA 3 can also convert between 4:4:4 and 4:2:2 formats for single link HD-SDI monitoring and output.
- With the hardware HD/SD downstream keyer, waiting for a graphic or logo to render in software becomes just a memory.

KONA 3 (B&H# AJKONA3): With break-out cables and 3-year AJA Warranty with Advanced Exchange.....**Call or Log-on**



FS1 HD/SD Audio/Video Frame Synchronizer and Converter



Featuring a flexible "anything in, anything out" architecture, the FS1 can simultaneously work with both HD and SD video — all in full 10-bit broadcast quality video and 24-bit audio. The FS1 supports virtually any input or output, analog or digital, HD or SD. It can up-or downconvert between SD and HD, and provide simultaneous HD and SD outputs. Up, Down, Cross-Conversion between HD formats are also supported, with simultaneous output of both formats.

For audio, the FS1 supports 8-channel AES, balanced analog, or 16 channel embedded audio with full flexibility and audio processing controls. You can choose from any of the 4 groups of embedded audio for 8 channel output on the ASE or Analog audio. The FS1 supports closed captioning and the conversion of closed captioning between SD and HD formats—including full conversion of CEA-608 captions to the CEA-708 standard. The FS1 is also network ready, supporting webbased and SNMP remote control.

- Alphamumeric display shows status information and control information (for viewing and changing functions/parameters).
- Activity LEDs displays at-a-glance the settings and current FS1 conditions.

FS1 (AJFS1)Call or Log-on



Ki Pro Portable Digital Disk Recorder

Bridging the gap between camera acquisition and post, Ki Pro is a portable tapeless video device that records files to the Apple ProRes 422 codec directly from camera. Ki Pro provides a new way of connecting production and post with its extensive analog and digital connectivity; virtually any video and audio source can be fed into Ki Pro to record pristine 10-bit ProRes 422 media that is then immediately available to edit within Apple's Final Cut Studio. Ki Pro allows filmmakers, broadcasters and video professionals and prosumers to skip the process of re-rendering to an editing codec by giving immediate access to full raster edit-ready ProRes 422 files directly from camera. Ki Pro records hours of media to a removable storage module with built-in FireWire 800 or to 34mm ExpressCard Flash. The device is a small, portable unit that can sit on a table, in a bay or mounted between a camera and tripod. Ki Pro is also ideal for on-set monitoring, providing instant access to multiple display devices simultaneously.



- Record natively to Apple ProRes 422 for full raster 10-bit 4:2:2 HD and SD.
- Bridge proprietary compression schemes by recording to Apple ProRes 422.
- Connect any digital camera via SDI or HDMI, or any analog camera with multiple input options
- Convert in real time from SD to HD, or 720 to/from 1080, in full 10-bit quality.
- Extend client review capabilities with simultaneous recording to camera and to Ki Pro.

- Extend productive life of existing cameras and embrace future workflows with powerful conversion capabilities.
- Built-in WiFi and Ethernet for complete control via a web-browser, or iPhone.

Ki Pro: With HDD Storage Module and AC Adapter with 4-pin XLR connector (AJKIPRORO)..... **Call or Log-on**
KI-STOR250-RO: Removable 256MB HDD storage module for use with the Ki Pro (AJKISTOR250R)..... **Call or Log-on**

io HD Portable FireWire-800 Analog/Digital Capture Device

io HD is an effortless to use, transportable plug-in solution for working with HD and SD in Final Cut Studio. With a single FireWire 800 connection, io HD can easily be connected to a Mac Pro desktop or a MacBook Pro laptop, offering un-paralleled video and audio connectivity.

Within its portable and rugged form factor (measures only 8.2 x 12 x 4.8" and has a built-in handle), io HD offers SD/HD analog I/O, SD/HD digital I/O including HD-SDI and HDMI, balanced analog and digital AES audio, as well as RS-422, genlock, and even LTC timecode connections. It is also the only device in the world that supports Apple's ProRes 422 codec in hardware, enabling true 10-bit video editing with a MacPro or MacBook Pro. Add AJA's realtime hardware-based 10-bit up/down/cross conversions, and you can work anywhere in SD or HD—all in full-raster 10-bit 4:2:2 quality. Comes with a three year warranty.



- ProRes 422 Workflow—in Hardware
- Allows ProRes 422 to move over FireWire 800 connectivity
- Creates images visually indistinguishable from the source
- 4:2:2 chroma sampling provides high-quality color definition
- 10-bit sample depth produces images suitable for color correction and compositing.
- AJA Control Panel is used to select the input audio/video source, configure up/down/cross-conversions and much more.
- Data Rate Calculator figures storage/bandwidth requirements
- AJA System Test benchmarks storage such as disk arrays

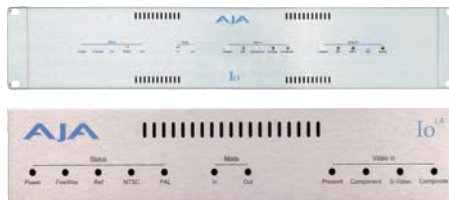
- Two HD/SD inputs and two outputs, one connection for Genlock input and a loop-through, and two groups of three BNCs configurable for component HD/SD analog video input and output.
- HDMI input/output, composite, S-Video, LTC in/out and RS-422 machine control—connect to just about anything.
- 8-channel SDI embedded 24-bit 48kHz audio for multi-channel audio mastering.
- Balanced analog XLR connections for four channels along with two unbalanced RCA connectors.

(AJIOHD)..... **Call or Log-on**

IO• IO^{LA}• IO^{LD}

Uncompressed Over-Firewire Devices for Final Cut Studio

The IO family provides a simple elegant plug-in solution for working with Final Cut Pro on a Mac. With a single FireWire connection, any IO connects to a Mac Pro, MacBook Pro, or Power Mac and provides audio and video I/O, connection to VCRs, Genlock and integrated Final Cut Pro drivers. With the proper FireWire card and external drives, you can even use IO products with an Apple laptop. IO products are the simple solution for building a Mac-based video finishing system. Co-developed with Apple, IO products work with Final Cut Pro to provide a seamless non-linear editing experience, with all the features of proprietary systems - but without the expense and hassles. All feature RS-422 control, looping genlock, are rackmountable and come with a 3-year warranty.



- IO:** Analog component (YPbPr/RGB), composite and S-Video input/output, 10-bit SDI input/output, 4-channel AES I/O, SPDIF I/O, 4-channel XLR-balanced audio input/output. 8-channels embedded audio. (AJIO)..... **Call or Log-on**
- IO^{LA}:** Analog component (YPbPr/RGB), composite and S-Video I/O 4-channel XLR-balanced audio I/O. (AJIO)..... **Call or Log-on**
- IO^{LD}:** Analog component (YPbPr/RGB), composite and S-Video output only, 10-bit SDI input/output, SPDIF 2-channel out. 8-channels embedded audio. 2-channel XLR-balanced audio output. (AJIO)..... **Call or Log-on**

HD-Series Miniature Converters

3GM 3G/1.5G HD-SDI Multiplexer

The 3GM is versatile and economical tool for interconnecting dual-link 1.5G SMPTE372M and 3G SMPTE425M. Allows dual 1.5G to 3G or 3G to dual 1.5G conversion. Additionally, 3GM's 3G HD-SDI output is configurable for SMPTE425M type A or B. Can even convert 3G from/to type A or B. Also provides a monitor output which is a single link 1.5G HD-SDI. Has two inputs (HD/SD-SDI) and three outputs (3G HD-SDI, HD/SD-SDI). Fully equalizing and re-clocking with jitter attenuation. Passes all ancillary data. (B&# AJ3GM)..... **Call/Log-on**



HD10C2 HD/SD-SDI to Analog Component Converter

In addition to being a high-quality 10-bit HD converter, it is "dual-rate" and works with both HD-SDI and SDI inputs. For HD-SDI inputs, the HD10C2 outputs full bandwidth HD component or VGA-style RGBHV video. For SDI inputs, component or composite SD outputs are supported. When connected to a multi-format monitor, will automatically provide an image from almost any HD or SD input format. Also features 2 equalized HD-SDI outputs. (AJHD10C2)..... **Call/Log-on**



HD10A HD Analog to HD-SDI Converter

Miniature, high-quality, 10-bit analog to digital converter for HDTV. The HD10A can add an HD-SDI output to cameras, computers with HD RGB graphics, VTRs, or other analog-only HD equipment. The HD10A accepts HD YPbPr or RGB analog and outputs three duplicate HD-SDI signals. Works in 1080i, 1035i, 1080psf and 720p with internal or external tri-level sync (AJHD10A)..... **Call/Log-on**



HD10MD3 HD-SDI to SDI/Analog Downconverter

Miniature digital downconverter for converting HD-SDI video to standard definition SDI and analog component/composite video. The HD10MD3 uses a full 10-bit data path and multi-point interpolation to produce broadcast quality downconverted video. It also converts either 1080p24 or 1080p 24sf to 59.94 Hz output using 3:2 pulldown. Output can be formatted for 4:3 or 16:9 SD monitors. Four-channel input embedded HD-SDI audio is passed to the SDI output. (AJHD10MD3)..... **Call/Log-on**

HD10AVA SD/HD Analog Composite or Component Video and 4-Channel Audio to SD/HD-SDI with Embedded Audio

The HD10AVA automatically detects the video input format and embeds the audio inputs in the SDI/HD-SDI outputs. Add an SDI/HD-SDI audio/video output to professional video equipment with analog outputs. Add HD-SDI outputs to most HDV cameras or decks by using the component outputs of such devices. Supplied breakout cable for audio/video inputs and provides 3 SDI-HD-SDI on BNC. (AJHD10AVA)..... **Call/Log-on**

GEN10 HD/SD Sync Generator, Blackburst and Tri-level Sync Generator

A cost effective and flexible SD/HD/AES sync generator, the GEN10 features 7 outputs including 2 groups of independently controlled SD/HD sync outputs and one AES-11 output. The SD outputs can be switched between color black or color bars. HD tri-level sync can be switched between 19 different HD formats. The AES-11 output can be switched between SILENCE and TONE. All outputs are in sync with each-other and are sourced from an accurate master time base. (AJGEN10)..... **Call/Log-on**

BORIS FX Blue 2.5

Real-time 3D and Motion Graphics Solution



Blue 2.5 is a standalone 3D compositor as well as a plug-in for After Effects, Premiere Pro, and Avid editing systems. Designed for editors and compositors who want to create stunning 3D looks without the learning curve and render times associated with 3D applications. Perfect for post facilities, Blue 2.5 uses latest-generation GPU-based graphics cards to provide an interactive effects

design experience. Delivers real-time processing of 2D and 3D effects as well as real-time playback of video and audio media. Users can adjust effect parameters during playback, a "front room" capability that is ideal for working side-by-side with clients. The fast export to disk, including hardware-rendered anti-aliasing, motion blur, and 3D shadows, provides significant time-savings.

For Windows (#BOCB2F)**264.95**

BORIS FX Continuum Complete 6

Video Effects Plug-ins

Continuum Complete 6 is an expansive plug-in filter set that lets you create effects from the practical to the inspired directly in your native host interface for unprecedented workflow. Nearly 200 filters include advanced keying, matting, compositing, image processing, distortion, temporal effects and motion tracking. These filters provide the creative freedom to animate your graphical elements or video at any speed, acceleration, or position you want.



- "Digital repair"-style filters such as Smooth Tone, DV Fixer, and Pixel Fixer
- Hundreds of factory-installed animated presets
- Over 1500 factory-installed static presets
- Presets can be modified with a standard text editor
- Volumetric lighting effects and glows
- Specular lighting special effects such as Glint, Glare, Glitter
- Compositing tools such as Light Wrap and Matte Choker
- Natural effect generators such as Snow, Rain, Fire, Stars
- Motion Key for automated foreground object removal
- Film Look effects such as Bleach Bypass, Damaged Film, and Grain Match

• Optical Flow-based image retiming and motion blur effects

For Windows (#BOCC6AEW)**749.95**

BORIS FX Final Effects Complete (FEC)

Visual Effects Filters



Final Effects Complete offers a collection of over 100 effects plug-ins for leading nonlinear editing and compositing solutions. Ranging from graceful blurs and edges to radical warps and particle generators, FEC dramatically augments your creative arsenal without forcing you to learn a new application. The simplicity of the filters combined with the native host interface, reduces the learning curve to virtually zero. Most filters feature less than a dozen parameters; only a few simple adjustments are required to create totally unique organic effects.

For Mac (#BOFEC5AEM) and Windows (#BOFEC5AEW).....**Call/Log-on**

Adobe Premiere Pro CS5

Bundled with Adobe's OnLocation CS5 and Encore CS5, Premiere Pro CS5 a complete start-to-finish solution for efficient video production and DVD creation. It includes all the great features you expect from NLE software including multiple video and audio tracks, color correction, and native support for digital camcorders. It supports SD, HD, and HDV video formats, and can even export video for use in Flash. Bring new dimensions to your projects efficiently and in real time with precise keyframe controls and features like high-quality slow motion with time remapping. Save time creating dramatic effects and get finer creative control thanks to tight integration with Photoshop CS5 and After Effects CS5 Professional. Quickly and precisely edit footage from multicam shots, and much more. Working with virtually any format, Premiere Pro CS5 efficiently takes you from on-site capture to final delivery without sacrificing the quality and integrity of your footage. Finish and deliver content anywhere, from film and tape to the web, DVD, Blu-ray Disc, and mobile devices.



- Edit video natively in tapeless formats, including RED, AVCHD, P2, XDCAM EX, and XDCAM HD, without transcoding or rewrapping.
- Full support for multicamera editing (up to four simultaneously).
- Choose fast color correction for quick adjustments or secondary color-correction tools for more detailed modifications.

- Adobe Media Encoder allows you to encode video for use on the web. It supports many compression formats, including FLV, F4V, Windows Media, MPEG-2, H.264, and QuickTime.
- OnLocation CS5 turns your computer into a digital video recorder, field monitor, and video signal evaluation processor.

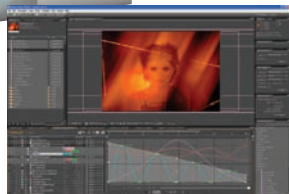
Premiere Pro CS5: For Macintosh (ADWPPCS5M2) or Windows (ADPPCS5W).....**Call or Log-on**

Adobe After Effects CS5

2D/3D Compositing and Animation Software

Create motion graphics for film, video, DVD, the web, and mobile devices. After Effects CS5 brings infinite variety to your creative vision and stunning impact to your communications. Animate freely using Shape Layers and the Puppet tool; combine moving imagery with still images, text, and sound; and manipulate your creations with inexhaustible effects combinations. Work from scratch or jump-start projects quickly with hundreds of customizable animation presets and templates, and use the Brainstorm feature to generate animation variations based on parameters you choose.

It features an intuitive interface, enhanced multicore and multiprocessor support, and tight integration with Adobe applications like Photoshop CS5 Extended, Premiere Pro CS5, Illustrator CS5 and more. When your projects reach review, clients and colleagues can make timecode-specific comments using Adobe Clip Notes, streamlining the approval process. Flexible tools let you produce professional output for cutting-edge media types, like FLV and SWF for the web or mobile devices; work with a wide range of file formats from HDV to OpenEXR, H.264, and Camera Raw; and take advantage of additional animation presets available for download via Adobe Exchange.



- Add impressive vector graphics to animations. Build, modify and animate vector shapes that include polygons and stars. Create shape layers using the pen tool.
- The puppet tool can turn almost any 2D image or text field into a dynamic animated layer. Place "joints" within the image, so you can reshape, extend, squish and rotate objects.

- Special visual effects plug-ins let you enhance, stylize and make other changes to any layer of your video.
- Use the Cartoon effect to mimic cel animation and watercolor paintings, or stylize footage for artistic purposes.
- Device emulators will show you exactly what your project will look like on a specific mobile device (mobile phones, PDAs, etc.)

After Effects CS5: For Macintosh (ADWAECS5M2) or Windows (ADWAECS5W2)**Call or Log-on**

Adobe CS5 Production Premium

Maximize your productivity with CS5 Production Premium, the total post-production solution. Achieve creative control with a complete set of professional video and audio post-production tools to take your ideas from storyboarding and acquisition through production and delivery. Capture footage, edit efficiently, apply blockbuster visual effects, create and match compelling audio to your productions. Move smoothly among select components via Adobe Dynamic Link.

Enjoy integration between Photoshop and After Effects to allow for greater animation possibilities. Export from After Effects, Premiere Pro, and Soundbooth with markers converted to cue points for easier project creation in Adobe Flash. Manage media more efficiently than ever with Adobe Bridge, a single, intuitive interface that enables instant previews of video and audio files, batch processing, and image sequence previewing and scrubbing. CS5 Production Premium supports every major file format and lets you deliver your work to virtually any medium, including film, video, DVD, Blu-ray Disc, the web, and mobile devices.

Includes: After Effects CS5 Professional, Premiere Pro CS5, Photoshop CS5 Extended, Illustrator CS5, Flash CS5 Professional, Encore CS5 Soundbooth CS5, and OnLocation CS5. Also included are the components common to CS5 applications. They include Bridge CS5, Version Cue CS5, Device Central CS5, and Dynamic Link.

CS5 Production Premium: For Mac (ADWPPCS5M) or Windows (ADWPPCS5M2).....**Call or Log-on**





DaVinci Resolve for Mac

World's Most Powerful Color Correction Solution

DaVinci color correctors are the standard in post production since 1984. The name behind more feature films, television commercials, documentaries, episodic television production and music videos than any other grading system, there are thousands of colorists worldwide who understand the performance, quality and workflow of DaVinci and love it as their trusted partner in creativity. When you're in a room full of demanding clients with conflicting ideas, colorists know that only DaVinci has the quality, real time performance, creative features, and powerful control panels to keep them coming back. A fantastic solution for SD and HD, and even 2K, DaVinci Resolve for Mac is the world's most advanced color correction software solution. Colorists can rotate images, re-frame, add corrections, blurs and trackers, and then just hit play, and it's all real time. Plus, because no features are disabled on this software only version, when faster GPU cards are released in the future, customers can simply plug them in for more power. Compatible with high performance GPU cards and off the shelf control panels such as the Tangent Wave, includes 32-bit float YRGB processing for all effects, power windows, tracking, primaries and secondaries and 3D Object Tracker.



Software Only:

- All image processing is the deepest 32 bit floating point and all effects, power windows, tracking, primaries and secondaries operate at the highest bit depths in real time.
- Supports flat gamma, linear or log images with equal ease and quality. If you need to resize, reposition or zoom any shot, Resolve does it all in realtime at full RGB optical quality even when grading mixed formats, mixed pixel aspect ratios and mixed resolutions all on the same timeline.
- Automatically link color correction metadata to the master grade. Load an EDL for an instant conform of your timeline and grade multiple versions of the edit all at the same time. Automatic Scene Detector can even create EDLs fast.

- Dynamic Timeline shows dynamic transitions of each individual clip in layered form. You can adjust dynamic transitions including dissolve ramps.
- Includes the world's most powerful 3D tracker for locking Power Windows™ to on screen objects. No more time wasting on keyframe generation! 3D object tracking automatically follows the objects movement, position and size, even if it's tracking someone's face and they turn their head sideways! Resolve automatically adds up to 99 tracking points.
- DaVinci Resolve requires a third party control panel such as the Tangent Wave, and a single CUDA capable GPU card. If video I/O is required, then a DeckLink HD Extreme 3D card is needed.

Resolve Control Surface:

The control surface and Resolve software have been designed by colorists to work together in total harmony. Controls have been placed near your natural hand positions and lift, gamma and gain can all be adjusted at the same time. Each correction control has a separate button or knob so you can instinctively reach out and touch every part of your image. Colorists can work incredibly fast while keeping their head up and looking at the grading monitor while working. Also includes a full license for DaVinci Resolve software for Mac. Buttons can be set to any custom color, and with a huge 38 independent soft knobs with automatic color labels, you'll never have to page through multiple menus for common adjustments. Full deck control buttons with jog and shuttle are built in. All grade memories and gallery still frames can be recalled with a simple press of a button. With the DaVinci Resolve control surface, you can keep your head up viewing your grading monitor while you control your grading at full speed

- Includes reference frame quick recall keys and the fader T-bar lets you wipe between reference stills.
- Trackballs provide RGB balance adjustments and gain for lift, gamma and gain.
- Slide the keyboard when you need to name files. When you're finished simply retract it back into the control surface.
- Jog/shuttle knob and transport control keys give you full control of your project timeline or deck.
- 5 super bright full color displays show menus and indicators for a massive 62 soft knobs and buttons.
- Soft Knobs allow super fine parameter adjustment, and with a simple push, you can set each parameter back to the default. Knobs have no electrical contacts, so don't wear out.
- Custom backlit keys feature RGB color and intensity to suit your mood and taste! No other control surface looks as amazing in a darkened room.

DaVinci Resolve Software (BLDRS) **995.00**
Resolve Control Surface **Call or Log-on**

Tangent Devices Wave Control Panel for Resolve Software



A mouse or pen and tablet is not always the fastest or easiest way to use your color grading software. Wouldn't it be better if you had something real to get a hold of? The Wave allows you to do just that. With the Wave, Tangent Devices brings a new level of affordability and quality to control surfaces. Stylish enough to look good in any grading suite and compact enough to be used for on-set grading, you'll find all the controls you'd expect from a color grading panel without compromising on the essential ergonomics. The Wave features crisp, easy to read, cool-blue OLED displays and custom trackerball units based on a non-contacting optical pickup. With enough buttons and knobs to keep your most needed controls at your fingertips, the Wave increases your productivity, leaving you to get on with what you're best at doing – being creative.

Wave Control Panel (TAWAVE) **1495.00**

BORIS FX Graffiti 5.3

Broadcast-Quality 2D and 3D Titling Effects

Innovative and user friendly titling tools, Graffiti 5.3 lets you create titles and graphics directly inside your nonlinear editing system without importing and exporting. Easily create sophisticated title animation including type on text, text on a path, jitter and randomization. Create 3D text with bump maps and reflections. An expansive Style Palette and the BORIS Library Browser provide easy access to hundreds of preset effects and styles.



- EPS import and extrusion
 - Resolution independent vector text
 - Advanced type-on title animation
 - Text on a path
 - Automated rolls, crawls, fades, zooms
 - Gradient generator
 - 35 filter effects
 - 3D user modifiable spline primitive shapes
 - 3D shapes such as cylinders, spheres and cubes
 - 3D text with textures, reflection mapping, materials and lights
 - Audio import with scrubbable waveform
- For Mac (BOG52M) and Windows (BOG52W)..... **214.95**

BORIS FX FX 9.3

Effects, Image Processing, Paint & Rotoscoping



FX 9.3 offers realistic lighting, advanced keying and color correction, compositing, DVE, vector paint and support for third-party After Effects filters. Offers a Library Browser with hundreds of high-quality presets for easy application in over 20 NLEs. Sophisticated vector paint and spline tools allow you to create animatable

masks. More than 115 video filters include motion tracking and image stabilization, as well as self-animating natural effects that easily interact with timeline video.

- Unlimited layers of media
 - Volumetric Lighting Filters
 - Oversize image import for pan and scan
 - 3D shapes such as Cylinders, Spheres and Cubes
 - Gradient and Procedural Media Generator
 - Motion Blur
 - Audio import with scrubbable waveform
 - Motion Tracking, Stabilization and Corner Pinning
- For Mac (BOBFXM900) and Windows (BOBFXW900) **279.95**

BORIS FX RED 4.3

Titling, Effects and Compositing Software

An integrated 3D compositing, titling, and effects application, RED delivers unparalleled performance to over 20 NLE's. Designed specifically for editors, RED offers an unprecedented range of features and adds a standalone engine for rendering. It integrates 2D and 3D compositing, titling, paint, rotoscoping, a full suite of tools to create and extrude vector objects, 3D creation and animation, and the industry-leading software DVE technology. Save time and money using one interface, in one system.



- 164 video filters
 - Raster Paint Engine
 - Subtitle import feature
 - OpenGL accelerated effects creation and playback
 - Advanced 2D and 3D compositing with unlimited layers
 - High quality keying, masking, mattes and Apply Modes
 - Motion tracking, corner pinning and image stabilization
 - Vector paint and rotoscoping with precise controls
 - Over 110 filters including Wire Remover, Film Grain and Match
 - Vector text for razor-sharp display at any scale
- For Mac (BOBR4M) and Windows (BOBR4W)..... **894.95**

Intensity Pro • Intensity Shuttle

SD/HD Capture and Playback for HDMI and Analog Video

Compatible with Mac and PC, the Intensity Pro offers HDMI, analog component, composite (NTSC/PAL) and S-Video video capture and playback. Work in uncompressed video by capturing directly from the HD camera's CCD and eliminate HDV and DV compression quality problems, or use disk-space friendly professional compressed video if required. Instantly switch between HD and SD video standards. The supplied break-out cable also includes analog RCA stereo audio I/O and S/PDIF audio output.

Simply plug in Intensity Shuttle and get access to incredible quality 10-bit HDMI, analog component, composite and S-Video capture and playback. Innovative design lets

you plug inline with your cables because input connections are on one side, and output connections on the other. Intensity Shuttle powers from the USB 3.0 connection so you don't need cumbersome power supplies.

Intensity Pro (BLIP)...189.95 **Intensity Shuttle (BLIS)...**189.95

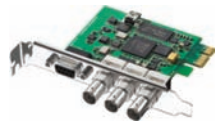


DeckLink SDI

SD/HD-SDI Editing Card

DeckLink SDI combines the highest quality 10-bit SD/HD-SDI capture and playback with high-end features such as black burst/HD tri-sync reference input, and RS-422 deck control. It can instantly switch between SD-SDI and HD-SDI formats, and includes 8 channels of embedded SDI audio support, so all video and audio connections are made with a single BNC type SDI video cable.

BLDSL1.....**Call/Log-on**



DeckLink Optical Fiber

SD/HD-SDI Card with Optical Fiber SDI I/O

Stepping up, DeckLink Optical Fiber combines highest quality 10-bit SD/HD-SDI capture and playback with built in optical fiber SDI. Designed for broadcast and post production users who want traditional SDI as well as optical fiber SDI cabling, the card eliminates the need for external SDI to optical fiber conversion.

BLDL0F.....**Call/Log-on**

DeckLink Studio 2

SD/HD-SDI, HDMI & Analog Editing Card



Features independent connections for SDI, HDMI, analog component (BNC x3), composite (BNC) and S-Video, so all types of equipment can remain connected without recabling. It also includes SDI and HDMI connections that switch between SD and HD, as well as an SD only output via a built in hardware down converter even when

running in HD. The SD down converted output is great when you need to monitor your work in both SD and HD at the same time.

- Includes 4 channels of balanced analog audio, as well as 2 channels of AES/EBU digital audio. Channel 3 and 4 analog audio outputs can be switched to AES/EBU for channel 3 & 4 and 5 & 6 output. That provides 6 channels of digital audio output—perfect for 5.1 surround sound monitoring or multi language work.

BLBDLKSTUDIO**Call or Log-on**

DeckLink HD Extreme

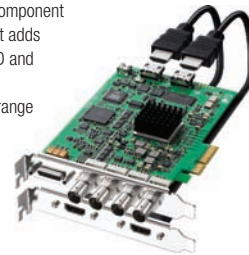
SD/HD/2K 4:4:4 Video Capture/Playback Card with SDI, HDMI and Analog Connections

The most advanced capture card ever built, DeckLink HD Extreme connects to SD/HD-SDI, HDMI, component analog, composite (NTSC/PAL) and S-Video while instantly switching between SD, HD and 2K. Plus it adds Dual Link and 3 Gb/s SDI for 4:4:4 quality, and a new hardware down converter for simultaneous HD and SD playback. It includes 2 channels of AES/EBU audio in/out with a sample rate converter on the AES/EBU input as well as 2 channels of XLR balanced analog audio in/out. It works with the widest range of equipment, such as HDCAM, HD-D5, HDCAM SR, Betacam SP, Digital Betacam, HD receivers, HDV cameras, televisions, mixers and more. Capture and play back 4:4:4 video when used with decks such as Sony HDCAM SR™, or view real time playback of 2K film resolution at 24 fps with Blackmagic Design's HDLink Pro. Other features include packaged software utilities, real-time effects, and compatibility with most video software applications.

- Built-in Dual Link 3 Gb/s SDI supports 4:4:4 and real time 2K capture and playback
- High speed 4-lane PCI Express supports full HD keying, 2K film and 1080p video formats
- Blackburst in SD or TriSync in HD and RS-422 deck control for capture and playback of clips with timecode accuracy

- Photoshop plug-ins are included for capture and output of still frames. Blackmagic FrameLink™ lets you instantly access QuickTime and AVI media as DPX files. Blackmagic Disk Speed Test™ checks your disk array in frames per second.

(BLDLHX3).....**Call or Log-on**



Multibridge Pro • Multibridge Eclipse

Multibridge Pro is an external PCI Express capture and playback solution that instantly switches between SD, HD and 2K, in 4:2:2 or 4:4:4 video quality. Consisting of a compact (1RU) but robust break-out box, Multibridge Pro connects to PC or Mac via high speed 10 Gb/s PCI Express 4 lane, for the world's highest quality editing system. Disconnected from the computer, it can be used independently as a bi-directional SDI video converter. Multibridge Pro supports Dual Link SDI and 3 Gb/s SDI, you can capture and play back 4:4:4 video when used with decks such as Sony HDCAM SR, or play back in real time 2K film resolution at 24 fps with Blackmagic Design's HDLink Pro.



Computer and monitors not included

- Multibridge Pro switches between HD and SD video, and features an SD/HD-SDI input, and two SD/HD-SDI outputs. It also includes 12-bit analog video input and incredible 14-bit A/D video conversion output.
- The analog video connections can be independently switched to component (YUV), composite NTSC/PAL and S-Video. When using component (YUV) video, the analog connections will switch between HD and SD allowing connection to HDV cameras or analog decks.
- There are two 2 channels of analog balanced XLR audio, 4 channels of AES/EBU digital audio I/O with each input featuring sample-rate converters, and 2 channel unbalanced audio out.
- Also includes a built-in HDMI digital monitoring output. HDMI allows up to 12 bit at full HD resolution for a very high quality built-in digital video monitoring solution.

Multibridge Eclipse Step-up Features: Designed for more complex needs in high end broadcast and post production, Multibridge Eclipse steps up with a larger 2 rack unit size for a massive 12 channels of AES/EBU, 4 channels of XLR balanced audio, and 32 independent audio level meters for audio monitoring. It also incorporates an advanced front panel design with status lights that shows



users instant feed-back of operational status—resolution, genlock format and video input status—vital in busy broadcast facilities.

Multibridge Pro (BLDLMBPQ2).....**Call or Log-on** **Multibridge Eclipse (BLDLMBEQ)**.....**Call or Log-on**

Video Recorder

Capture video direct to H.264 video files for your iPod, iPhone, Apple TV, YouTube and even full resolution video backups. The Video Recorder plugs directly into your computer's USB and includes easy to use software. Get the highest quality video capture from any component video or regular video device. Video Recorder eliminates time consuming processing because it captures into the native file format of your mobile device. It can even copy to iTunes ready for syncing. **(BLVR)**.....**129.95**



H.264 Pro Recorder

With so many new ways to watch video content, such as iPhones, web, iPad and more, there is a need for a simple, low cost way to move content from the video world to the computer world in H.264 format. The H.264 Pro Recorder is designed to fill this need. Compact and portable, it powers via USB, so is the perfect solution for applications using a notebook computer. Features real time capture of SD or HD video directly to H.264 files from SDI, HDMI and component analog video with balanced audio.

Includes Media Express for easy frame accurate capture using the built in RS422 control. Supports capture in both HD and SD video formats, while SDI, HDMI and analog component connections can all be switched between formats.

(BLH264PR)**329.95**





OpenGear Converter

Blackmagic's OpenGear Converters give you a great range of conversion while providing the freedom and cost savings of an open standard combined with centralized network control and monitoring. OpenGear Converters instantly switch between all SD and HD video formats the instant the video input changes. A huge range of standards are supported including NTSC, PAL, 1080i/59.94, 1080i/50, 1080PsF/23.98, 1080PsF/24, 720p/59.94, 720p/50 and new formats can be added via USB. All models have 3 Gb/s SDI technology that auto switches between SD, HD and 3 Gb/s HD-SDI formats. All AES/EBU audio inputs feature sample rate converters, and all audio connections can be switched between analog and AES/EBU audio!

- Fully compatible with the OpenGear standard. Many manufacturers develop OpenGear cards and frames that can be mixed and matched. OpenGear cards are hot swappable and can be controlled by java based DashBoard network control and monitoring software on Windows, Mac OS X and Linux.
- Select either 24-bit analog or 24-bit AES/EBU digital audio via mini switches, or remotely via the DashBoard network control software. The converters support the standard 2 ch and 4 ch audio rear modules, so they can be used with other brand OpenGear products.



- Built to the highest quality standards with low SDI jitter. You get the longest SDI cable lengths combined with ultra low noise analog video and audio for a true broadcast quality solution.
- Highest quality HD down converter automatically adapts to the input video format and outputs standard definition video in letterbox, anamorphic 16:9 or center cut 4:3.
- Converters can be set up via mini switches, DashBoard, or via USB using Blackmagic Design's Converter Utility. That's three completely different ways to configure, so you're never stuck in a critical live situation.

Same features as their respective Mini Converters (on the right) except in card form

- SDI to Analog (BLCO0CSA)..... **Call or Log-on**
- Analog to SDI (BLCO0CAS)..... **Call or Log-on**
- SDI to HDMI (BLCO0CSH)..... **Call or Log-on**
- HDMI to SDI (BLCO0CHS)..... **Call or Log-on**

- SDI to Audio (BLCO0CSAU)..... **Call or Log-on**
- Audio to SDI (BLCO0CAUS)..... **Call or Log-on**
- Optical Fiber (BLCO0COF)..... **Call or Log-on**
- Sync Generator (BLCO0CSG)..... **Call or Log-on**



UltraStudio Pro

USB 3.0 SD/HD Capture and Playback

Broadcast quality SD/HD capture and playback solution for USB 3.0 computers, the UltraStudio Pro is incorporates the latest broadcast technology in an attractive ultra-thin design that looks great on the desktop. With the incredible speed of USB 3.0 running at a massive 4.8 Gb/s, UltraStudio Pro easily has enough speed for the highest quality uncompressed 10-bit HD video with the maximum possible real time effects. UltraStudio Pro packs state of the art broadcast technology into an impossibly thin design. You get more video and audio connections, high quality up, down and cross conversion, full 10-bit video, internal SD keying and more.

- USB 3.0 is 10x faster than regular USB, and unlike FireWire which needs to use heavy video compression to handle HD playback, USB 3.0's blistering 4.8 Gb/s easily handles native 10 bit HD video. This means UltraStudio Pro doesn't waste CPU time compressing video just for playback, so all CPU time is dedicated to more HD real time effects.
- Connects to a vast range of equipment for capture and playback in SD and HD. Has separate connections for 3Gb/s SDI, HDMI, analog component, composite, S-Video, 2-CH AES/EBU, 4-CH XLR analog audio, down converted SD-SDI output, genlock, tri-sync and RS-422 deck control. Perfect for HDCAM, HD-D5, HDCAM SR, Betacam SP, Digital Betacam, televisions and more.
- For highest quality digital broadcast workflows, includes 10-bit SD/HD-SDI video with low SDI jitter, combined with AES/EBU digital audio with a high performance linear phase digital filtered sample rate converter. Features a total of 10 on board power supplies to isolate high precision analog electronics from digital noise, so you get pristine quality analog video and audio.
- Offers 4 channels of XLR balanced analog audio I/O as well as two channels of AES/EBU digital audio I/O, for broadcast quality and sample accurate AV sync. A sample rate converter on the AES/EBU input lets you connect to any digital audio device, from either synchronized or un-synchronized sources.

- Offers 8 channels of SDI embedded audio perfect for Premiere Pro's multi channel audio support. UltraStudio Pro can switch its analog audio output 3 and 4 to AES/EBU digital audio outputs for an extra 2 AES/EBU digital audio outputs. UltraStudio Pro is perfect for 5.1 surround sound editing.
- Includes a fast video processor for incredible 10-bit quality hardware up, down and cross conversion. Now you can edit once and deploy in SD, 720HD or 1080HD while leaving all CPU time dedicated to real time effects. You can also select between letterbox, anamorphic 16:9 and pillar-box 4:3 video. When working in HD video, down conversion lets you monitor in SD and HD at the same time with S-Video and composite video outputs active.
- Includes high quality standard definition digital internal keyer that lets you key RGBA images over the video input. The keyer works great when used with Blackmagic's Photoshop plug-ins, or even with RGBA animated video software for keying. You can also key over HDMI and analog video.
- Bundled Media Express lets you batch capture and playback DPX, uncompressed YUV and MJPEG files. You can even create your own playlist. Media Express also supports CMX EDL import and export, frame accurate deck control via RS-422 and will insert and assemble to tape. MediaExpress is fast, accurate and easy to use. You can even grab still frames from your deck.

UltraStudio Pro (BLUSP)..... **Call or Log-on**

Non-linear Video Editing

Mini Converter

Build your studio with the worlds most advanced and easy to use converters. Blackmagic's MiniConverters include auto SD/HD switching, redundant input, AES/EBU and analog audio on 1/4" jacks, combined with advanced 3 Gb/s SDI technology. There are 7 models to choose from depending on the conversion you need, plus a sync generator model.



- They support NTSC, PAL, 1080i/59.94, 1080i/50, 1080psf/23.98, 1080psf/24, 720p/59.94 and 720p/50 formats, plus new formats can be added via USB.
- Redundant input for mission critical tasks such as broadcast or live events.
- On models with AES/EBU digital audio in, a sample rate converter lets you connect to any AES/EBU source, either synchronized, or un-synchronized. On HDMI models, you also have full access to the HDMI audio embedded in the HDMI video connection.
- Use them anywhere in the world. A universal power supply is included with international socket adapters for all countries.
- Mini Converters are built to highest quality standards with low SDI jitter so you get the longest SDI cable lengths combined with multiple internal power supplies for ultra low noise broadcast quality analog video and audio.

SDI to Analog: Convert from SDI to analog in HD/SD component, NTSC and PAL video, plus balanced AES/EBU and analog audio. (BLSDIAMC)..... **Call or Log-on**

Analog to SDI: Perfect for converting from analog video in HD/SD component, NTSC, PAL or S-Video to SDI video with the choice to embed SDI audio from balanced AES/EBU or analog audio inputs. (BLASDIMC)..... **Call or Log-on**

SDI to HDMI: Converts from SDI to HDMI with embedded HDMI audio, plus balanced AES/EBU or analog audio. Use big screen TVs for broadcast video monitoring. (BLSDIHDIMMC)..... **Call/Log-on**

HDMI to SDI: Converts HDMI devices to SDI video with the choice to embed SDI audio from HDMI, AES/EBU or balanced analog audio inputs. Add SDI outputs to cameras with HDMI connections, or add if your computer supports HDMI compatibility via DVI to HDMI adapters, then you can use for adding SDI outputs to computers. (BLHDMISDIMC)..... **Call or Log-on**

SDI to Audio: De-embed 4 channels of analog audio or 8 channels of AES/EBU digital audio from any SDI video connection. Easily access the audio in any SDI video connection for output to audio equipment such as audio mixers, analog broadcast decks, audio monitors and more. (BLCOMCSAU)..... **Call or Log-on**

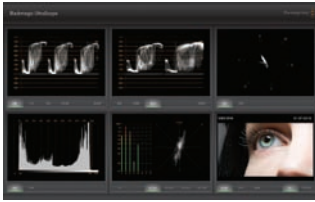
Audio to SDI: Embed 4 channels of analog audio or 8 channels of AES/EBU digital audio into any SDI video connection. Embed audio from devices such as audio mixers into SDI video connections for use with SDI routers and decks or to add extra audio channels to video converters. (BLCOMCAUS)..... **Call or Log-on**

Optical Fiber: Simultaneously convert SDI to Optical Fiber, and Optical Fiber to SDI. Automatically switches between any SDI, HD, 3Gb/s HD-SDI video standards and each direction can be completely independent. (BLCOMCOF)..... **Call or Log-on**

Sync Generator: Includes 6 crystal stabilized video reference outputs for referencing all the video equipment in your studio in either high definition Tri-Sync or standard definition blackburst. (BLSGMC)..... **Call or Log-on**

Broadcast Converter: Combines most mini converters features into a 1RU chassis that allows bi-direction conversion. Convert SDI to analog/HDMI while simultaneously converting analog to HDMI to SDI. Complete solution for connecting analog decks to SDI based systems in a compact rackmount design. (BLBCC)..... **Call or Log-on**

UltraScope



UltraScope are broadcast accurate PC-based scopes which include everything you need for an accurate professional solution you can trust. Perfect for master monitoring, edit suites, color correction, equipment rooms and engineering.

- Six independent waveform monitors combined into one to one to correctly align video levels and eliminate illegal colors.
- Display all six waveforms simultaneously with Parade, Waveform, Component Vectorscope, Histogram, Picture View and Audio Monitoring in an attractive full screen display.
- Or use the smaller 2-up display to show two waveform views, with selection of the scope display you want to see on each view. Ideal for laptop computers.
- Plug into any compatible PC with a 24-inch monitor, and UltraScope will display 6 live scope views simultaneously. With support for 1920 x 1200, 1920 x 1080 and 1280 x 800 resolution, UltraScope can also be used on screen sizes smaller than 24", which is perfect for OB vans or in-studio rack mounting.
- Powerful zoom function, with super high-resolution pan and zoom of graticules for the Parade, Waveform, Vectorscope and Picture displays. Perfect for editors and colorists who need accurate measurements such as matching blacks from different video sources.

Pocket UltraScope: Includes UltraScope software combined with a miniature pod that converts 3Gb/s SDI to the computer's USB 3.0 connection. Simply plugs in and is accurate and portable, so you can bring to the most remote locations. Pocket UltraScope automatically detects between SD, HD and 3Gb/s HD-SDI video standards, and is powered from the laptop battery via the USB 3.0 port so you don't need a power source when on location. (BLPUS)**562.25**

UltraScope: PCI Express card and software designed to work with a low cost PC and display. UltraScope automatically detects between SD, HD and 3Gb/s HD-SDI video standards and includes BNC SDI inputs as well as optical fiber SDI inputs. SDI input is available as a relocked SDI loop through on both optical and copper SDI outputs. UltraScope is technically accurate which is perfect for master monitoring and quality control tasks. (BLUS).....**660.25**

DVI Extender 3 Gb/s SDI Monitor Extender

Now you can route your computer monitor via your SDI router. DVI Extender lets you extend the DVI-D connection to your computer monitor via simple SDI cables. Now it's much easier to connect your computer displays anywhere in your facility, or even to more than one monitor when using any 3 Gb/s SDI router. DVI Extender also works as a regular DVI to SD/HD-SDI video converter, that's perfect for broadcast graphics.



- Includes a 3.5mm audio mini jack input so you can connect audio from your computer. That means you get full 3D accelerated graphics and audio from your computer to SDI.
- Connects directly to any USB port. Makes it ideal for portable use, as it can be powered directly from your laptop.
- Connects the DVI-D output on your computer to SDI equipment such as HDLink Pro.

BLHDLEXTDVI..... **Call or Log-on**

HDLink Pro • HDLink Optical Fiber

Advanced HD Monitoring Solutions

Monitoring converters for professional post production editors and broadcast paint and effects artists, HDLink Pro allow any supported DVI or HDMI display to be used for incredible HD/SD-SDI monitoring. When DVI-D or HDMI monitors are connected, HDLink Pro instantly switches between HD and SD, and allows pulldown for best monitor compatibility. Also supports stereo RCA audio output for monitoring on consumer equipment, as well as software for Windows XP and Mac OS X via an easy to use software interface.



HDLink Pro allows full 5.1 monitoring by including 6 separate channels of audio output. (BLHDLPROOPTD)..... **Call or Log-on**

HDLink Optical Fiber: Otherwise the same (except single link 3 Gb/s SDI only) the HDLink Optical Fiber is the world's first broadcast monitoring solution with built in optical fiber SDI connections **Call or Log-on**

New! HDLink Pro 3D: HDLink Pro supports 3D monitoring for the latest 3D production workflows. Lets you display both dual stream as well as interleaved 3D inputs and then display them on any compatible 3D DVI display or HDMI television. When used with a DisplayPort to HDMI adapter, HDLink Pro 3D also supports HDMI 1.4 for compatibility with the latest 3D HDTVs **Call or Log-on**



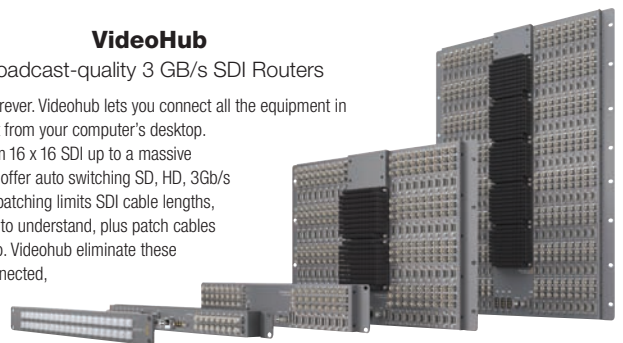
HDLink Pro features Dual Link 3 Gb/s SDI for high resolution HD-SDI 4:4:4 RGB and 2K film monitoring. It also includes color management via built in 3D lookup tables that allow any feature film stock to be simulated so editors can always see the correct color of the final film output. Popular 3D lookup tables can be loaded for various film stocks, and HDLink Pro is compatible with third party software for generating tables. Included in HDLink Utility software is full control for adjusting tables and generating custom "looks" for download into HDLink Pro. When editing with complex 5.1 surround sound audio tracks,

VideoHub

Broadcast-quality 3 GB/s SDI Routers

Eliminate complicated manual video patching forever. Videohub lets you connect all the equipment in your facility and easily change connections right from your computer's desktop.

Powerful broadcast grade routing switchers from 16 x 16 SDI up to a massive 144 x 288 SDI and 144 deck control ports, they offer auto switching SD, HD, 3Gb/s SDI, redundant power and re-clocking. Manual patching limits SDI cable lengths, and is often very complicated for creative users to understand, plus patch cables can quickly wear out so you get glitches in video. Videohub eliminates these problems because everyone is permanently connected, and no cables need to be physically changed. Videohub routers re-clock SDI video for long cable lengths so you always get reliable video.



- The routers use a single board design with no internal connectors for superior reliability. They feature the highest quality SMPTE compliant low jitter SDI connections, full SDI re-clocking and auto switching SD, HD and 3 Gb/s SDI connections.
- Videohub uses software control panels that run on any computer so you can control the router right from your desktop. There is a wide range of control panel styles to suit your workflow. You can even use large touch screen all-in-one computers as a customized router controller with easy to press icon buttons in an elegantly designed layout.

- The software panels run on Windows and Mac OS X. This lets you control the router from the same system you edit on. Videohub connects to any computer via USB and is then shared over your local network. Simply connect to the router via the USB 2.0 connection which activates any computer as the host, allowing other computers on your network to connect.
- Add push button routing to your decks and monitors. Smart Control installs under each video device, and each button can be customized to a router input. When you push a button, the output to your deck or monitor changes. Can also have multiple outputs.

Micro Videohub: Perfect for locations where space really counts, such as OB trucks, Micro Videohub is the world's smallest router. Includes 16 x 16 SDI routing, auto standard detection for SD, HD and 3 Gb/s HD-SDI, re-clocking, and built in ethernet, USB and serial router control interfaces. (BLMVH).....**1895.00**

Smart Videohub: Same as the Micro Videohub (above) plus adds a built in control panel. Now you can change all routing with the push of a button (BLSVH).....**2370.00**

Studio Videohub: Ideal for small workgroups who need compact size at an affordable cost, Studio Videohub features 16 inputs, 32 outputs and 16 deck control ports all packed into a tiny 2RU size less than an inch thick. (BLVHUBST).....**2850.00**



Smart Control: Affordable control panel for all your monitors and decks so you can set the input with a single button press. Each button can be set to a different router input and you can set single or multiple router outputs. All buttons include full RGB illumination. Smart Control connects to Videohub via Ethernet and setup software is included. (BLSC).....**469.95**

Broadcast Videohub: Ideal central router for larger post production facilities and regional broadcasters. Broadcast is the perfect combination of a large size at an affordable price, so you can use it for connecting all your equipment to a central location. Features a massive 72 inputs, 144 outputs and 72 deck control ports all packed into a compact 8RU. (BLBCVH)**14,250.00**

Enterprise Videohub: Designed for the largest facility or broadcaster, Enterprise is one of the largest routers available and includes the same advanced technology as the other Videohubs. Features a massive 144 inputs, 288 outputs and 144 deck control ports all packed into a 16RU size that's so thin you can install it in the back of a rack. (BLVHUBEP).....**28,500.00**

PC Turnkey Systems

B&H offers custom-built PC turnkey systems built around Rain Recording's Element Pro professional video workstations. Designed by Rain in collaboration with the technical staff at B&H, the Element Pro features a full-size, beautiful aluminum chassis with award-winning Quiet Cool Design that prevents noise, excess heat and the bottlenecks that cause dropouts and glitches. There is plenty of room for expansion and upgrades — the computer will support a full-size HD video capture card, up to 10TB of storage, and up to 24GB of 133MHz DDR3 Triple-Channel memory.

Systems include Intel Quad-core Xeon "Bloomfield" series CPU, nVIDIA Quadro FX 3800 1GB Graphics, 6GB RAM and 4TB of storage, DVD burner, and Windows 7 Professional (64-bit) installed. Systems include hardware and software from AJA, Blackmagic, Grass Valley, Matrox and Adobe, meticulously installed and tested in-house by B&H. Systems include color-coded keyboard and 1-year warranty with technical support.

- With Adobe Production Premium CS5 (ADPPCS5RBE2T).....**Call or Log-on for latest prices**
- With Glass Valley EDIUS 5 and Storm Plus Card (GRHDSRBE1T).....**Call or Log-on for latest prices**
- With Blackmagic Intensity Pro and Adobe Premiere Pro CS5 (BLIPCS5RBE1T).....**Call or Log-on for latest prices**
- With Blackmagic DeckLink Studio 2 and Adobe Premiere Pro CS5 (BLDLSCS5RBE1).....**Call or Log-on for latest prices**
- With Blackmagic DeckLink HD Extreme 3D and Adobe Production Premium CS5 (BLHDX3DRBE2T).....**Call or Log-on for latest prices**
- With Matrox MXO2 and Adobe Production Premium CS5 (MAMXCS5BE2T).....**Call or Log-on for latest prices**
- With AJA Kona and Adobe Production Premium CS5 (AJK3CS5RBE2T).....**Call or Log-on for latest prices**



Sony Vegas Pro Master Suites

Three suites combining all the professional tools needed to edit video and audio, encode to multiple formats, compose music beds, create 5.1 surround sound mixes, burn CDs, and author DVD and Blu-ray Discs™. From editing and mixing, to multiformat encoding and batch processing, to design and authoring, this powerful collection of tools offers an efficient and highly integrated workflow for today's multimedia professional.

Each Supermicro workstation is designed to support the real-time editing of a wide variety of SD, HD, and 2K/4K formats, including DV, DVCAM, HDV, AVCHD, NXCAM, XDCAM Optical, XDCAM EX, and RED ONE, with support for Panasonic P2 MXF files via an optional third-party plug-in. Powered by the Vegas Pro Master Suite collection, the Supermicro systems are particularly well-suited for today's file-based workflows, offering the ability to work with the native file formats directly from the camera without requiring any time-consuming re-wrapping or transcoding of the media.

In addition, most off-the-shelf systems usually offer little in the way of operational training, customer assistance and technical support. The Vegas Pro Master Suites provides comprehensive training with award-winning Seminar Series Training DVD's; FASST Start Vegas DVD from VASST; and Sony's unprecedented Double Platinum support plan: two full years of telephone support, along with two years of free Sony application upgrades.

Each system includes Windows 7 Professional (64-bit) and Vegas Pro Master Suite Software:

- Vegas™ Pro 9 (32-bit and 64-bit)
- Vegas™ Pro Production Assistant
- Sony Seminar Series
- DVD Architect™ Pro 5
- Sound Forge™ Pro 10
- Bonus Content: Loops and Sound Effects
- Dolby® Digital AC-3 Pro Encoder
- ACID™ Pro 7
- Bonus Training: VASST's Vegas Pro Fasst Start Guide



- 3.2GHz Intel Core i7-960 Quad-Core CPU, 8GB RAM, 2TB Storage, DVD Burner, nVIDIA Quadro FX 580 Graphics (SOX8SAX).....**Call or Log-on for latest prices**
- Dual 2.26GHz Intel Xeon E5520 Quad-Core CPU, 12GB RAM, 2TB Storage, DVD/Blu-ray Burner, nVIDIA Quadro FX 580 Graphics (SOX8DALI).....**Call or Log-on for latest prices**
- Dual 2.53GHz Intel Xeon E5540 Quad-Core CPU, 16GB RAM, 2.6TB Storage, DVD/Blu-ray Burner, nVIDIA Quadro FX 580 Graphics (SOX8DALI).....**Call or Log-on for latest prices**

Final Cut Studio 3 Mac Pro Turnkey Systems

Custom built by B&H to take your creativity to the next level. Built around the Mac Pro desktop workstation, these systems come pre-installed with Apple's Final Cut Studio 3 editing suite and Mac OS X 10.6 Snow Leopard. All systems except the MacBook Pro systems include Bella Keyboard for Final Cut Studio. Each system includes 3-year AppleCare protection for the Mac Pro. In addition, B&H backs the system with a full year of technical support, ensuring that your system will run smoothly and allow you to concentrate on your work.

- 2.66GHz Quad-Core Mac Pro**, 6GB RAM, 2.64TB Hard Drive and nVIDIA GeForce GT 120 Graphics (APFCSMP4).....**Call or Log-on**
- 2.66GHz Quad-Core Mac Pro**, 6GB RAM, 2.14TB Hard Drive, nVIDIA GeForce GT 120 Graphics and AJA Io Breakout Box (AJIOTA).....**Call or Log-on**
- 2.66GHz 12-Core Mac Pro**, 6GB RAM, 4TB Hard Drive, ATI Radeon HD 5770 1GB Graphics and AJA IoHD Breakout Box (AJI0HDT).....**Call or Log-on**
- 2.26GHz 8-Core Mac Pro System**, 6GB RAM, 4TB PRO DQ Hard Drive Array, nVIDIA GeForce GT 120 Graphics and AJA Kona LHe (AJKONALHETZ).....**Call or Log-on**
- 2.26GHz 12-Core Mac Pro System**, 8GB RAM, 4TB PRO DQ Hard Drive Array, ATI Radeon HD 5870 1GB Graphics and AJA Kona 3 (AJKONA3TQ).....**Call or Log-on**



- 17" MacBook Pro Turnkey System** with 2.66GHz Intel Core i7, 4GB RAM, 500GB 7200rpm Hard Drive, 8TB (4x2TB) Promise SmartStor, nVIDIA GeForce GT 330M and AJA IoHD (AJI0HDPT).....**Call or Log-on**
- 17" MacBook Pro Turnkey System** with 2.66GHz Intel Core i7, 4GB RAM, 500GB 7200rpm Hard Drive, 1TB (4x2TB) Promise SmartStor, nVIDIA GeForce GT 330M and Matrox MXO2 (MAMXO2MB).....**Call or Log-on**

B&H
Computer Software & Memory
Installation with
1-Year Tech Support



EDIUS Neo 2

Built on the same highly-acclaimed real-time mixed format editing technology as in Grass Valley's EDIUS 5, the EDIUS Neo 2 offers native editing of various formats including AVCHD, HDV, DV, Windows Media, and QuickTime, and supports a seamless real-time workflow, including the ability to mix various formats within the same timeline.

With a basic, entry-level range of tools and features, EDIUS Neo 2 is perfect for the classroom environment, yet still provides powerful nonlinear editing features found in higher-end solutions, such as real-time, multi-track, mixed format HD/SD editing, chroma keying, titling and both Blu-ray Disc and DVD authoring.

- Real-time, Mixed format HD/SD editing, including AVCHD, HDV, MPEG-2, DV, Windows Media, and QuickTime video
 - Fast, flexible user interface, including unlimited video, audio, title, and graphics tracks
 - Real-time editing and conversion of different HD/SD aspect ratios, such as 16:9 and 4:3
 - Real-time editing and conversion of different frame rates, such as 60i, 50i and 24p, and different resolutions, such as 1920 x 1080, 1440 x 1080, 1280 x 720, 720 x 480
 - Real-time HD/SD effects, keyers, transitions, and titles
 - Real-time, render-free video output directly from the timeline
 - Nested timeline sequences
 - High-speed MPEG-2 and HDV import and export using multi-core and multiple CPU technology
 - Segment encoding (smart rendering) export for MPEG-2 and HDV
 - Direct to Blu-ray Disc and DVD timeline export with menu
 - Quick Titrer built in for real-time roll/crawl titling
- (GREN2).....**164.95**

Pegasus HD/SD

Video Capture Card for Archival Distribution

In addition to the included HQ Recorder capture software, the card ships with an SDK. This allows developers to create their own custom applications to leverage the Pegasus's capabilities.

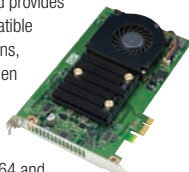


- Video capture —S-Video, YUV, RGB analog HDmi video
 - Canopus HQ codec chip delivers superlative visual quality and small file sizes
 - Software bundle with SDK includes Auto Capture, Manual Capture, and Scheduled Capture
- GRPEGASUS.....**699.95**

FIRECODER Blu

Accelerated Blu-ray Encoder and More

The PCI-e based FIRECODER Blu board provides accelerated encoding of Blu-ray compatible sources from any number of applications, including EDIUS 5 software. You can then output its results directly to a Blu-ray disc or to a Blu-ray compatible file for additional authoring.

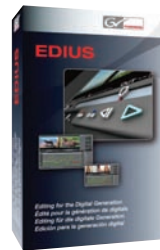


It also lets you transcode between H.264 and MPEG-2 formats; supports 1080i and 720p as well as native 24p Blu-ray formats. Supports up/down conversion SD and HD sources. And it encodes HD source materials 2x faster and SD source materials 4-5x faster than real time. Includes FIRECODER WRITER software, a collection of basic Blu-ray and DVD authoring tools.

GREBBR.....**559.95**

EDIUS 5

Designed for broadcast and postproduction environments, EDIUS 5 is perfect for file-based workflows, offering real-time, multi-track, mixed-format editing, compositing, chroma keying, titling, and timeline output capabilities. In addition to the standard formats of the EDIUS family, it supports Infinity™ JPEG 2000, DVCPRO, P2, VariCam, Ikegami GigaFlash, MXF, XDCAM, and XDCAM EX video. It also supports all DV and HDV cameras and decks.



Steps-up from EDIUS Neo 2 with:

- GPU-accelerated 3D transitions
- Supports up to eight cameras and provides realtime monitor preview, as well as a master channel preview that displays all eight camera angles.

- High value software bundle includes filters, effects, image stabilization, VST audio plug-ins, and DVD and Blu-ray authoring

EDIUS 5 (GREDIUS) 629.95



EDIUS 5 Hardware/Software Systems

EDIUS NX Express with EDIUS 5 Software:

The EDIUS NX allows for realtime HD/SD resolution conversion and output, aspect ratio conversion and output, frame rate conversion, and various other effects, keyers, transitions, and titles. The card has a hardware-based video overlay design for accelerated HD/SD editing. It is equipped with inputs and outputs for DV, HDV, composite and S-Video and unbalanced audio, making it easy to put raw footage into your computer and export it back to tape. Also features analog input signal cleaning and enhancement. (GRENPEB5S).....**749.95**

Same as above, plus a daughter card with component output (BNCx 3), as well as accelerated standard definition MPEG-2 and MPEG-4 encoding. (GREENESS).....**1069.95**

Same as above, plus with sleek, black, 5.25" breakout panel that provides front-mounted connectors for 4-pin FireWire, composite, S-Video and unbalanced stereo RCA audio. Includes all cables for connecting the bay to the EDIUS NX Express board. (GREENNE5NBE5).....**1099.95**

EDIUS SP-SDI Board Set and EDIUS 5 Software:

Hardware-based video overlay and high-quality video I/O circuitry, interfaces with HDV, DV, and all analog cameras and decks. Supports equipment with component video and XLR balanced audio I/O, as well as frame-accurate RS-422 VTR control and external reference sync input connections. (GRESBSE5S).....**2399.95**

Same as above, plus with 19" 1RU breakout box (GRESBSE5S2).....**3159.95**



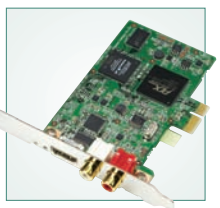
HDSTORM • HDSTORM Plus

A PCI Express board bundled with EDIUS 5 editing software, HDSTORM lets you work with HDMI inputs and outputs, and has a Canopus HQ hardware codec for optimized, CPU-free capture. Empowers you with constantly synched, full-resolution preview of effects and content directly from the EDIUS 5 timeline. Having the Canopus HQ codec on-board means you won't be restricted by CPU speeds or workstation limitations when ingesting or creating high-quality Canopus HQ AVI files for editing. The Canopus HQ codec offers supreme visual quality without the excessive hard disk storage costs normally associated with HD video ingest. With HDSTORM, HD video content you output from your HD sources will be perfectly preserved, ready for you to either edit, author to DVD or Blu-ray, or store for later usage. Because the input quality is so clean, subsequent conversions to other distribution formats—such as mobile phones or the Web—are cleaner too. Working as a perfect combination of software and hardware, HDSTORM can handle any mix of HD and SD video content; unlimited video, audio, title, and graphics layers; and any combination of real-time effects. Otherwise the same, the HDSTORM Plus includes a bay option for high-quality HD/SD analog component, S-Video, and composite input/output.

HDSTORM (GRHDSPEDIUS)..... 1249.95 HDSTORM Plus (GRHDSPEB5)..... 1269.95

HDTHUNDER

HDTHUNDER is a high-powered solution for multi-format editing—supporting SDI-based editing and tapeless workflows and the ability to preview projects in real time, using affordable HDMI monitors. A PCI Express board, it includes EDIUS 5 software, HD-SDI I/O, an HDMI video output for full-resolution, real-time preview monitoring, and embedded HDMI audio for high-quality audio monitoring. Also features timecode I/O for accurate editing from field logs, reference input support for blackburst and tri-level sync, machine control for external VTR ingest, and optional VTR emulation software. It empowers users with a constantly synched, full-resolution preview of effects and content directly from the timeline. Can handle any mix of SD and HV video content; unlimited video, audio, title, and graphics layers; and any combination of real-time effects. It also offers real-time HD and SD video output. (GRHDT).....**1689.95**



HDSPARK

HDSPARK is a hardware solution for those working in a file-based, networked environment and need to see projects output in real-time, using affordable HDMI monitors. A PCI Express board, it includes EDIUS 5 software as well as an HDMI output to support full-resolution, real-time preview monitoring. It also features embedded HDMI audio and separate stereo RCA jacks for high-quality audio monitoring. The board can handle any mix of SD and HD content; unlimited video, audio, title, and graphics layers; and any combination of real-time effects. It also empowers users with constantly synched, full-resolution preview of effects and content directly from the EDIUS timeline. (GRHDSV5).....**699.95**



ADVC700 Broadcast-Quality Bi-Directional Analog/Digital Video Converter

Engineered for professional broadcast and post production standards, ADVC700 provides unmatched quality and reliability in bidirectional analog/DV conversion, supporting both Windows and Mac OS. An excellent component I/O solution for any DV interface, the ADVC700 boasts a 19" rack-mountable design with component, composite, S-Video, and balanced and unbalanced audio I/O, RS-422A control, as well as support for LTC timecode and external synchronization. Canopus DV codec chip provides unparalleled picture quality preservation during analog-to-DV conversion, plus locked audio support for perfect audio and video synchronization. It also features patented PerfectSync technology (see box) to ensure impeccable conversion of every frame. The ADVC700 is easily and quickly configurable using the LCD front panel display and jog dial. (GRADVC700).....**1629.95**



The ADVC700, ADVC1000 and ADVC3000 include patented PerfectSync technology to ensure perfect output synchronization. PerfectSync controls and synchronizes the transfer rate of IEEE1394 communication with an external reference signal. This prevents skipped and duplicate frames and produces perfect conversion of all frames during analog/DV conversion.

ADVC1000 Broadcast-Quality Bi-Directional SDI/DV Converter

A professional, high quality bi-directional SDI/DV video converter designed for broadcast studio equipment, the ADVC1000 features front-side controls and LCD display, analog video and unbalanced audio outputs for monitor preview, and a solid half-1U 19" rackmount design. (GRADVC1000).....**1749.95**



ADVC3000 Broadcast-Quality A/D Converter



Designed for broadcasters, cable operators, video professionals and post-production operations, the 2RU high ADVC3000 combines the features of the ADVC700 and ADVC1000 converters—and can convert between analog and DV, DV and SD-SDI and analog and SD-SDI. Whether you need to convert YUV component video to uncompressed SDI, DV to S-Video, or simply to de-embed and re-embed audio from a digital video stream, the ADVC3000 gives you what you need. (GRADVC3000) ...**2695.00**

ADVC-HD50 Realtime HDMI-to-HDV Conversion

The ADVC-HD50 instantly converts uncompressed HD video and audio from HDMI devices to the HDV format then outputs a FireWire connection for use in the non-linear editing system of your choice. Featuring a sleek, portable design it requires no drivers or software to set up, and is compatible with PC and Mac-based editors. Perfect for anyone who needs HDMI ingest without internal hardware. (GRADVCHD50)**629.95**



ADVCHDSC1 HD/SD-SDI-to-Component Conversion

The ADVCHDSC1 converts HD-SDI signals to HD component output or SD-SDI signals to SD component output. It provides instant output of HD content to affordable HD component displays, such as TVs and RGB monitors—and standard-definition (SD) content to component, S-Video, and composite displays. It has a sync generator for HD (tri-level sync) and SD (black burst), as well as audio-level-adjustment options. Also features embedded audio support, SD-SDI to composite and S-Video conversion, HD-SDI conversion to RGB for PC monitors with BNC inputs, and front-panel displays for video-format and audio-level outputs. Automatically detects your current video output format, and supports SDI signal pass-through. (GRADVCHDSC1).....**1349.95**

ADVCHDM1 Real-Time HD-SDI/HDV Conversion

Provides high-quality, bi-directional conversion between HD-SDI and HDV signals, complete with embedded audio. Compatible with Mac and Windows-based nonlinear editors that support HDV or HD-SDI, the ADVCHDM1 lets you instantly convert HD-SDI output to HDV and ingest HDV material into HD-SDI systems for archiving. It can also encode HD MPEG-2 transport streams up to 1920 x 1080 resolution using one of 8 different bit-rate settings that best suits your workflow. It lets you input external timecode information when encoding in HDV; control HD-SDI decks via HDV and vice versa with AV/C-RS-422 device control conversion; and use simple, two-button control for its encoding/ decoding and time-code mode via the front panel. (GRADVCHDM1)**4699.95**



ProCoder 3 Professional High-Speed Transcoding Software

Windows-based solution for multi-format encoding and compression. Features batch processing, priority queuing, and simultaneous creation of multiple destination files. Quickly transcode web video with a user-friendly ProCoder Wizard, or use custom settings. Supports H.264 to produce iPod and mobile video files, and decoding of the AVCHD format from the latest generation of MPEG-4 camcorders. (GRPC3).....**399.95**

CG-100 SD Character Generator Software

The CG-100 is a PC-based character generator that produces lower thirds, text rolls, text crawls and more. It can import .TGA animations, text files, still images and even display the PC's time. Requires a Decklink SDI or Studio card.



Any font installed on the system can be used by the character generator, as well as languages (i.e. if using Arabic, Hebrew, etc., text appears right to left - the program itself is in English only). You can create and save as much text as your hard drive allows, and they can be recalled in sequence. Using the Live Operation Mode, the CG-100 can also be used as a live on-screen typewriter.

- Animation including wipe, push and fade in various directions at different speeds
- Text can roll and crawl
- Standalone logo display function
- Redo/undo function for quick testing of an animation
- Support 16:9 or 4:3 aspect ratios & NTSC/ PAL video standard
- GPI trigger by external GPI cable or by "Ctrl Key" or "Right Click" on the mouse

CG-100 Software Only (DACG100).....Call or Log-on
CG-100 with SDI Card (DACG100SDIK)Call or Log-on

CG-300• CG-350

SD/HD Character Generator Software

PC-based character generators designed for live and post production, the CG-300 and CG-350 work with a Blackmagic Decklink or AJA Kona LHe card as a downstream keyer. Otherwise the same, the CG-350 adds Banner Crawl (continuously scrolling text) and Snyder (corner graphics, station IDs, and "coming up next" animation) functions.



- Support resolutions from 320 x 240 to 1080i HD
- Anti-aliased characters with leading, kerning and tracking, with two edge and three shadow styles for each character.
- 32-bit color support (with transparency).
- Create smooth gradients between any 2 colors in the characters, edges, shadows, and shapes.
- Character attributes can be drawn with 16 custom textures (marble, wood grain, etc.) on each page.
- Up to 32 shapes per page. Each shape can be set to a solid color, semi-transparent color, a color gradient, or a texture. The shapes can be edged, colored, sized, italicized, and rotated just like text characters.
- Up to 16 full-color logos can fine-positioned, overlapped, sized, etc. just like characters.
- Text, logos, and shapes can be placed on multiple layers (up to 1000), each independent of the others. Layers can be named.
- Support for BMP, JPG, GIF, PCX, TIF and TGA images.
- One button access to your 64 user-defined text styles and each typefaces can use up to 25 TrueType different typefaces.
- Character height, width, angle and rotation all customizable, and independent from letter to letter.
- Variable character and edge blurs, independent of each other.

CG-300 Software Only (DACG300)Call or Log-on
With Decklink HD Extreme (DACG300KIT).....Call or Log-on
CG-350 Software Only (DACG350)Call or Log-on
With Decklink HD Extreme (DACG350KIT).....Call or Log-on

matrox™ CompressHD

Accelerator Card for H.264 HD File Creation



A fast, flexible, high quality encoding workhorse, CompressHD is designed for professional content creators delivering H.264 files for Blu-ray, the web, and mobile devices. Incorporating Matrox MAX technology, CompressHD lets you create H.264 files, for resolutions ranging from iPod to HD, faster than real time (bitrates up to 50 Mbps).

It works in systems with or without a video I/O device and extends the life of your current system investment, giving you the power you need to deliver today's premium H.264 formats faster than ever. A low profile, half-length PCIe x1 card, it fits into Mac Pros, Intel-based Apple Xserve systems, and PCs. (MACHD).....**Call or Log-on**



Matrox MAX is a unique technology that implements faster than realtime H.264 encoding for resolutions ranging from iPod to HD. It uses a dedicated hardware processor to accelerate the creation of H.264 files for Blu-ray, the web, and mobile devices. By using specialized hardware acceleration, jobs are finished with amazing speed and system resources are liberated for other tasks. Quality and flexibility are ensured through direct integration with professional applications such as Apple Compressor on the Mac and Adobe Media Encoder on the PC. As an added benefit, the Matrox MAX technology allows direct export to higher quality H.264 Blu-ray compliant files from Compressor. Matrox MAX technology is available in MXO2, MXO2 Mini and MXO2 Rack.

matrox™ MXO2 Mini

HDMI and Analog I/O for Mac and PC



The sleek MXO2 Mini goes wherever you go. Use it with a laptop or a desktop system and applications including

Final Cut Pro, Premiere Pro, Photoshop, and many more. Capture via HDMI, analog component, S-Video, and composite. Convert standard definition videos to HD or vice versa, while capturing or playing out, using the MXO2 Mini's high-quality dedicated hardware. Playback high and standard definition video simultaneously. Turn your HDMI screen into a professional-grade video monitor with color calibration tools including blue-only. Easily edit AVCHD footage by capturing into an edit-friendly compressed or uncompressed format.

- Easily connects to cameras and monitors
- Capture HD video via HDMI or analog component; NTSC and PAL via analog component, S-Video, or composite
- Playback HD video via HDMI and analog component; NTSC and PAL via HDMI and analog component or HDMI and S-Video and composite
- High-quality 10-bit hardware scaling engine for realtime upscaling, downscaling, and cross conversion on capture and playback
- Stereo RCA and up to 8 channels of HDMI audio input and output
- 5.1 and 7.1 surround sound monitoring on the HDMI output

- MXO2 Mini**
for Desktop Systems (MAMXO2MD)**Call or Log-on**
for Laptops (MAMXO2ML)**Call or Log-on**
- MXO2 Mini with Matrox MAX**
for Desktop Systems (MAMXO2MMD)**Call or Log-on**
for Laptops (MAMXO2MML)**Call or Log-on**

matrox™ MXO

HD/SD Output/Monitoring Device and Scan Converter for Macintosh

The MXO is a versatile, all-in-one output device for the Mac. It turns the Apple Cinema Display or other DVI monitor into a professional HD and SD video monitor. Because it's small and portable, it makes a laptop a mobile editing station. It's a frame-accurate, broadcast-quality HD/SD analog and SDI output device ideal for mastering native digital projects directly to tape or to a satellite encoder. And, it can be switched into a genlockable scan converter with HD/SD analog and SDI output.



- Inexpensive HD and SD monitoring – now you can trust your Apple Cinema Display or other DVI monitor, even for color grading
- Frame accurate, broadcast-quality audio/video output in HD and SD with guaranteed A/V sync
- Genlockable HD/SD-SDI, HD/SD analog component, Y/C, and composite outputs with up to 8 channels SDI embedded audio output and stereo audio monitoring
- Realtime downscaling of HD projects to SD resolution with proper color space and aspect ratio conversion for monitoring and output
- WYSIWYG video output from QuickTime-based applications
- Genlockable HD/SD scan conversion for flicker-free video output of your computer desktop with any application

MAMXO.....**Call or Log-on**

matrox™ MXO2 Complete Portable I/O for Macintosh

A complete portable I/O device for the Mac, the MXO2 is lightweight, fits in your laptop bag, and runs for hours on a field battery or the included AC adapter. Designed to streamline editing workflow with Final Cut Studio and Adobe CS5 Production Premium on MacBook Pros and Mac Pros, the MXO2 provides broadcast-quality input/output, monitoring, and up/down/cross conversion. Users can benefit from file-based workflows with native support for XDCAM, XDCAM HD, XDCAM EX, and P2. In addition, offers RS-422 machine control for frame-accurate capture and print-to-tape with Final Cut Pro and Adobe Premiere Pro.



- Supports up to five user selectable simultaneous video outputs: HD and/or SD on HDMI, SDI, and analog.
 - Video inputs include HD/SD-SDI, analog component HD, composite, S-Video and HDMI
 - Audio inputs include two XLR-balanced, two RCA unbalanced, two AES/ABU, SDI and HDMI embedded (up to 8 channels).
 - Video outputs include two HD/SD-SDI, 12-bit analog component, 12-bit composite, and S-Video, one HDMI.
 - Audio outputs include four XLR-balanced, six RCA unbalanced for surround sound monitoring, two AES/ABU, SDI and HDMI embedded (up to 8 channels).
- With SD analog black burst (bi-level) or HD tri-level sync genlock, it can genlock to any type of video input or to house sync.
- Turn your HDMI monitor into a true-color video display you can trust, even for color grading. Has hue, chroma, contrast and brightness controls plus Blue-only mode.
- Provides realtime SD to HD upscaling with proper conversion of the SD color space to the HD color space.
- Provides built-in 5.1 surround sound monitoring via RCA and HDMI so you don't have to buy more equipment. The MXO2 also lets you map any audio track in Final Cut Pro or Adobe Premiere Pro to any audio output.

- MXO2 Complete Portable I/O for Macintosh (MAMXO2)**Call or Log-on****
MXO2 with Matrox MAX (MAMXO2M)Call or Log-on****

matrox™ MXO2 Rack

Rackmountable HD/SD I/O for Macintosh



The MXO2 Rack gives you the functionality of an I/O card with the convenience of a rackmountable breakout box. Built on Matrox MXO2 technology, the 2RU high MXO2 Rack is designed for post-production facilities, broadcast news operations, and OB vans where highly-reliable equipment, more audio inputs and outputs, and genlock loop are required. It streamlines editing workflow with Final Cut Studio. It gives you broad-

cast-quality I/O via HDMI, SDI, and analog; professional audio input/output including built-in 5.1 and 7.1 surround sound monitoring; and HDMI video monitoring with calibration controls including blue-only. Users will also benefit from a wide variety of HD and SD workflows thanks to its 10-bit hardware up/down/cross scaling engine and support for a wealth of file-based formats and industry-standard codecs.

- MXO2 Rack (MAMXO2R)**Call or Log-on**** **MXO2 Rack with Matrox MAX (MAMXO2RM)**Call/Log-on****

matrox™ Convert DVI HD-SDI Scan Converter

Convert DVI is an economical studio tool that allows you to easily capture and prep computer-based content for TV broadcast. Whether your source is YouTube, Skype, video games or mobile phone videos, Convert DVI uses a simple PC-based user interface to capture any part of the screen; convert it to HD-SDI with genlock; and embed the audio in the SDI signal. Also features flicker reduction, underscan, customizable presets, and a standalone mode that allows it to deliver SDI and analog video from non-PC platforms, such as cameras or medical devices.



- DVI-D input up to 1920 x 1200
 - SD analog black burst (bi-level) or HD tri-level genlock
 - Simultaneous analog and digital video output
 - Stereo audio input can be embedded into the SDI output signal
 - Realtime HD to SD hardware downscaling with proper color space and aspect ratio conversion
 - Region-of-interest output support
- MACDVI.....**Call or Log-on**

800-947-1175 | 212-444-6675 Quick Dial: 831

Non-linear Video Editing

matrox™ RT.X2 LE • RT.X2

Professional Realtime HD Editing for Adobe CS4

Ideal for corporate communicators, event videographers, project studios, educational facilities and digital filmmakers, the RT.X2LE allows users to get maximum productivity from Adobe Premiere Pro CS4 and CS4 Production Premium. The RT.X2 LE is a ¼-length PCIe card with a professional breakout box, that lets you edit HDV or P2 720p and output HD. Plus, you can capture other HD and SD formats over the analog inputs, and mix all types of footage on an HD or SD timeline in real time.

RT.X2 LE goes far beyond the capabilities of systems that combine Premiere Pro CS4 and a simple I/O card. The RT.X2 hardware provides accelerated editing of full-quality, full-frame-rate video, export to DVD, Blu-ray, QuickTime, Adobe Flash and other formats, and extra productivity with WYSIWYG graphics and realtime downscaling of HD projects for SD delivery. Otherwise the same, the full-version RT.X2 provides full-resolution HD monitoring on an inexpensive flat panel display via its independent DVI output. In fact, the RT.X2 provides better HD video definition, with pixel-to-pixel mapping on a flat panel (1920 x 1200), than you will get on expensive professional HD monitors which re typically limited to approximately 800 lines of resolution.



- Provides realtime native editing of HDV 1080i, HDV 1080p, HDV 720p (JVC ProHD), P2 MXF 720p, XDCAM EX, DV, DVCAM, DVCPRO.
- Realtime, mixed-format, multi-layer workflows that combine HD and SD material from analog and digital sources
- Broadcast quality effects are fully keyframeable and feature a high level of control for detailed work.
- Many more realtime layers of video and graphics
- Real time effects including color correction, chroma/luma keying, speed changes, blur/glow/soft focus, 3D DVE and much more
- Extensive support for Canon, JVC, Panasonic and Sony cameras
- Realtime high-quality downscaling for analog SD output from an HD timeline

- Realtime playback of 32-bit MPEG-2 I-frame AVI files with alpha in HD and SD
- Realtime capture from analog sources to compressed MPEG-2 4:2:2 I-frame
- Realtime mixed-format multi-cam
- Realtime MPEG-2 IBP capture from analog and DV sources for DVD authoring
- Composite, Y/C, and analog component input and output
- WYSIWYG video output for motion graphics, animation, and compositing applications (After Effects, Bridge, Photoshop, Combustion 3ds Max, eyeon Fusion, LightWave 3D
- Audio VU meters on capture

RT.X2 LE (B&H# MARTX2LE).....Call or Log-on
RT.X2 (B&H# MARTX2Q)Call or Log-on
RT.X2 with Adobe Premiere Pro (B&H# MARTX2CS4).....Call

matrox™ Axio Le

Realtime Engine for HD and SD Editing for Broadcast and Post



Axio LE makes Adobe Premiere Pro CS4 and CS4 Production Premium the foremost realtime HD and SD editor for demanding broadcast and post-production environments. It features no-render HD and SD finishing in compressed and uncompressed formats, superior realtime color correction tools, advanced realtime effects, and a full complement of analog and digital audio and video inputs and outputs. It also lets users work seamlessly with the other Adobe Production Studio applications, fully supporting Adobe Dynamic Link and providing WYSIWYG video output support for After Effects and Photoshop, as well as other industry-leading animation and compositing packages.

Stepping up from RT.X2 platform, the Axio LE features simultaneous HD and SD output, SD/HD-SDI input/output, analog component input/output, SD genlock and Tri-level HD genlock. It also supports full 1080i resolution at 25, 29.97 and 1080p at 23.98, 24 and 25, and offers Closed Captioning (CC) support.

Step-up Features from RT.X2

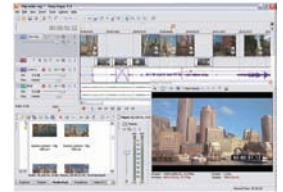
- Full-resolution, mixed-format, multi-layer realtime editing of HD and SD video, graphics, and effects
- Realtime native editing of Panasonic P2 and P2 HD and Sony XDCAM, XDCAM HD, and XDCAM HD422 clips (MXF files)
- Support for Omneon media servers via native MXF file transfers
- Extensive native codec support in HD and SD – uncompressed, MPEG-2 I-frame, DVCPRO HD, MPEG HD, MPEG HD422, HDV, IMX, DVCPRO50, DV, DVCPRO, DVCAM
- 24 fps editing in HD and SD with pull down, reverse pull down, and Panasonic VariCam support
- Native MXF and HDV AVI file support in Video for Windows applications such as After Effects via EZ-MXF and EZ-HDV utilities
- DV-1394, composite, Y/C, HD/SD analog component, and HD/SD SDI input and output
- 2-in/6-out AES/EBU audio, 2-in/6-out XLR audio, 8-in/8-out SDI embedded audio, 1/4" output jack for stereo monitoring

Axio Le (B&H# MAALE2Q).....Call or Log-on
2-Year Axio LE Advantage Plan: Adds top-quality Matrox support to your Axio LE for two full years (B&H# MA2YPALE).....**Call or Log-on**

CINEFORM

Neo Scene

Designed to elevate enthusiast filmmaking to a higher level, Neo Scene delivers the same quality CineForm files as used by Hollywood movie producers and post production facilities.



They rely on CineForm file formats for their editing and archive workflows because they offer the highest visual fidelity achievable.

- Neo Scene converts hard-to-edit HDV, AVCHD, or Canon 5D MKII camera footage to CineForm AVI or MOV files. Users will benefit from the same theatrical quality format and real-time editing performance as professionals.
- Neo Scene uniquely extracts 24p progressive frames from all your HDV or AVCHD material for editing in your favorite NLE.

For Mac (#CINSM) and Windows (#CINSW)**124.95**



Neo HD

Available for Mac or Windows, Neo HD offers the industry's highest quality and most feature-rich online HD workflow, enhancing applications from Adobe, Apple, Autodesk, Sony, and virtually any other DirectShow (AVI) or QuickTime (MOV) application. (#CINHDM)**439.95**

Neo HD & Prospect HD Both Feature

- Whether a project is destined for film, projection, Blu-RAY, DVD, or web distribution, Neo HD and Prospect HD deliver unmatched workflow efficiency, the industry's highest visual fidelity compression and cross-platform compatibility.
- HD Link (Windows) and Remaster (Mac) file conversion and image processing software convert most camera or file-based source formats into 10-bit CineForm Intermediate HD files while also performing valuable tasks such as telecine removal, deinterlacing, spatial resampling, and much more. Enables true 24p editing workflows from most HD sources.
- CineForm files are 10 bits in precision and are visually equivalent to uncompressed sources — but are just 15% of the file size.
- They include First Light™, a cross-platform, non-destructive color processing application that works together with your editing and effects software. First Light maintains color adjustments as Active Metadata with your media — you never need to render, and consequently you never clip highlights. Color adjustments are immediately visible in any application that calls a CineForm file.
- Create on one platform, share on the other, even with distributed editing workflows. CineForm provides a free decoder on both Win and Mac to easily share content.

Prospect HD

CineForm's Prospect HD is designed for online editing of all HD film, television, or videography projects using Adobe Premiere Pro CS3 or CS4 on Windows. An HD real-time software video processing engine enhances the performance and features of Premiere Pro while eliminating the need for (and outperforming) most specialized hardware. Modern PCs can easily play 4-6 CineForm HD streams in real-time while editing. (#CIPHDP).....**599.95**



**Advantage Series 2.0 Keyboards**

In addition to color and icon coded keycaps, they include two USB 2.0 ports, multimedia keys, and a sleek new design. Bella's unique hybrid technology allows you to use the Premier Pro and Avid Media Composer keyboards on either a PC or a Mac platform.

For Adobe Premiere Pro (B&H# BEKBA2PP).....**59.95**
 For Final Cut Pro (B&H# BEKBA2FCP)**59.95**
 For Avid Media Composer (B&H# BEAKMCM).....**59.95**

**DV Keyboard 3.0**

Features a built-in jog/shuttle controller, 2 USB 2.0 ports for direct, high-speed connectivity, and 3 ports for the optional NeoLite. High-quality sticker sets are included to help you learn and edit more quickly, and multimedia keys for further productivity. Utilizing Bella's unique hybrid technology, they work on both Mac and PC platforms.



With keycap stickers for Pinnacle Studio, Sony Vegas Movie Studio and Apple Final Cut Express (B&H# BEKBDV3).....**99.95**
 For Sony Vegas (B&H# BEKBDV3SV).....**129.95**
 For Avid Liquid (B&H# BEKBDV3AL).....**129.95**

**Professional Series 3.0**

The Professional Series 3.0 features a built-in jog/shuttle controller, two specialty keys (which can be programmed for commonly

used commands), two USB 2.0 ports, and program-specific, color and icon-coded keycaps that let you learn the application quicker and edit faster. The keyboard also includes the NeoLite, a task light featuring dual LEDs and a 12 inch flexible gooseneck that plugs into any of three power ports in the keyboard leaving all USB ports free. Web, email, and multimedia keys allow use as a standard keyboard as well.

For Premiere Pro (B&H# BEKBP3PP).....**129.95**
 For Final Cut Pro (B&H# BEKBP3FCP)**129.95**
 For Avid Media Composer (B&H# BEKBP3AMC)**129.95**

FINAL DRAFT Final Draft 8

Script Writing Software for Mac/Windows



The number-one selling program for writing movie scripts, television episodics and stage plays. Combines powerful word processing with professional script formatting in one self-contained, easy-to-use package. No need to learn about script formatting rules – it automatically paginates and formats your script to industry standards as you write. (#FID8).....**183.95**

Final Draft AV 2.5

Full-featured scriptwriting software for writers of commercials, corporate and training videos, documentaries and presentations. Final Draft AV keeps audio and video columns automatically aligned when text is added, edited or deleted. No complicated commands to learn, no need to worry about style or text placement; creates a professionally formatted A/V script in no time. (#FIDAV25).....**144.95**

SONY Vegas Pro 9

Professional Video, Audio, and Blu-ray Disc Creation

Vegas Pro 9 includes 32- and 64-bit versions of Vegas Pro 9 software, DVD Architect Pro 5 software, and the Dolby Digital professional AC-3 encoder—working seamlessly together to provide an efficient and intuitive environment for professional video and broadcast production, as well as DVD and Blu-ray Disc authoring. Offering the most robust and progressive platform available for content creation and production, it offers broad format support, superior effects processing, unparalleled audio support, and a full complement of editorial tools. From acquisition to delivery, from camera to Blu-ray Disc, it delivers exactly what you need to produce outstanding results.



- Create compelling 3D video and text effects, with control over Z-depth, plane intersection, compositing, and more. 3D motion is real time and previewable via i.LINK to an external monitor.
- Includes over 190 video effects and 175 transitions — all fully customizable. Film Effects, Chroma Key, Timecode Overlays, Media Generators, Credit Rolls, Text Effects and more. Use transitions such as Clock Wipe, Dissolves, and Page Peels.
- Edit multicamera productions intuitively and quickly by specifying shots as you watch your project.
- Switch between as many as 32 video sources with a keyboard command or a click of your mouse.
- Sophisticated lighting effects such as Glint, Rays, Defocus, Starburst, Soft Contrast, and Fill Light let you simulate the effect of light streaming in from behind your source, create colored highlights, change the focus of your shot and more.
- Unlimited tracks, 24-bit/192 kHz audio, punch-in recording, 5.1 surround mixing, effects automation, time compress/expand. Apply customizable, real time EQ, Reverb, Delay, and more. Expand audio processing and mixing options with third-party plug-ins. Use the Mixing Console for precise audio control.
- Burn movies to Blu-ray Disc from the Vegas Pro timeline. Use DVD Architect Pro 5 to author DVDs or Blu-ray discs with multiple video angles, subtitles, multiple languages, and special features. Preview and test your work in real time. Apply Brightness and Contrast, Auto Levels, Crop, and Anti-Flicker filters. Set CSS and Macrovision® copy-protection flags for masters.

Vegas Pro 9 Video (SOVP9).....Call or Log-on

Vegas Pro Production Assistant: Plug-in designed to enhance the functionality of Vegas Pro, streamlining the workflow for professional broadcasters and editors. It automates many frequent tasks and processes to save hours of tedious editing work. Easy to use, it includes a complete set of video tutorials to help you get maximum output with minimum effort. (SOVPA).....**179.95**

MOTU V4HD Firewire Video Interface

With one simple plug-and-play FireWire 400 or 800 connection, the V4HD turns your Mac or PC into a powerful HD/SD production workstation equipped with all the video and audio I/O you need. Connect all your gear, from monitors to professional HD cameras, video decks, LCD reference monitors and plasmas – all at the same time, with no cable swapping. Choose your input source, then log and capture HD or SD clips directly into Final Cut Pro or Premiere Pro.



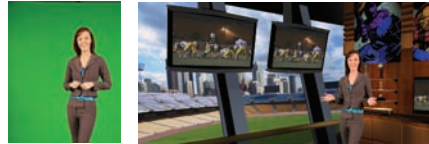
- Captures and plays all standard HD and SD formats up to and including 1080p30 (720p, 1080i, 1080p and 1080PsF)
- In Final Cut Pro, the V4HD supports full-raster 1920 x 1080 HD capture and playback using Apple's ProRes 422 codec in both standard and HQ modes. Final Cut users can ingest an uncompressed SDI or component HD source and then capture and edit in ProRes while monitoring their ProRes timeline in HD and SD simultaneously via the V4HD's hardware-accelerated up- and down-conversion.
- In Final Cut Pro and Premiere Pro, the V4HD provides hardware-accelerated capture and playback of DVCProHD, DVCPro50 and DVCPro25 video streams, plus 8- and 10-bit uncompressed SD with plug-and-play FireWire connectivity and CPU-efficient intra-frame editing.
- Hardware-accelerated 2:3 or 2:3:3:2 pull-down insertion and removal — go between film and NTSC rates in real time, with no rendering required.

- Can instantly playback DVCProHD/P2 clips (imported or ingested) with no transcoding necessary. Conversely, you can connect any SD or HD video source such as an HDV camera, legacy video deck or DVD player and then capture it directly as a DVCProHD clip in Final Cut or Premiere.
- Many cameras now feed their uncompressed SDI or component output directly from the camera's optics and imager, before compression, for the best-possible picture quality during capture. Need to bring SD material into your HD project? The V4HD even provides hardware-accelerated SD-to-HD up conversion for capturing SD sources in DVCProHD format.
- Up/down conversion formatting — anamorphic, pillar box, letterbox, 14:9 pillar box, 14:9 letterbox and full screen
- Two rack space form factor with dedicated connectors — no cable swapping or gangly, inconvenient breakout cables.

MAV4HD.....Call or Log-on

NewTek TriCaster
Portable Live and Post Production Systems

With TriCaster, you can seamlessly mix live input from video cameras along with stored video clips, overlaid graphics, still images and PowerPoint presentations. Simultaneously send the broadcast-quality output to a video recorder, a projector and the web. TriCaster can handle as many as three live cameras, and it doesn't require any scan converters. All this in a 10 lb. box that can fit in a backpack. (You will need a small LCD screen though). There's also an optional video mixer board (TriCaster VM) for those who prefer the solid feel of a real T-bar, backlit source buttons and rotary transition/overlay knobs. Otherwise, everything is controlled onscreen via computer keyboard.



Live Camera

- Instantly incorporate live video, taking composite (RCA) or S-Video from the camera and plugging straight into TriCaster's convenient front connection panel.
- As soon as you plug in a camera, its video appears on-screen and is ready for use in your presentation. Easily connect up to three cameras for quick and compelling digital video that can then be sent to tape, to a projector or to the Internet.

Virtual VCR

- TriCaster offers total freedom to record, edit and playback with its Virtual VCR. Even easier to use than your VCR at home, just drop in a video clip and when you're ready to make it live, select and play it instantly. With a big, friendly button just for the Virtual VCR on the video mixer panel, cutting between clips and live cameras is a snap.

Overlay

- Create key points and identify all participants on-screen. With simple click-and-replace text update, pages can be easily created. Live overlays support text, picture and animated titles with alpha channel to provide depth and dimension to your graphics
- Browse through your styles of lower or full-screen graphics, quickly replacing the stand-in text with your own. Then, access any page with a click, and smoothly fade titles and text in and out. Create as many pages as you need from the various pre-loaded styles. Custom styles can be created using any graphics program and a text editor.

iVGA

- Each computer runs a small application and is seen by TriCaster across the local area network. The basic TriCaster supports one input. Producers can choose among any of those computers, bringing it into the presentation in real time. This goes way beyond sharing graphics, though. iVGA is capable of bringing in full-screen images, animations and even video playing on the outlying computer with incredible clarity and smoothness.

Integrated into TriCaster, LiveSet lets you achieve the look of a sophisticated studio setting, virtually, within a very small studio space and without the need for external equipment. With lights, a simple camera set-up, and a green or blue backdrop your on-camera talent can be placed in any one of the LiveSet virtual sets.

Video Effects

- Hundreds of professional transitions: wipes, peels, 3D page curls and much more. All transitions serve dual duty, in the switcher and also in the real-time editor. Choose which order the transitions will be recalled, and auto-advance to the next in line.

Keyer

- Key in real-time with the switcher or key it later in the editor. Let TriCaster help bring along the sophistication of a television studio to your next production.

Capture Media

- Connect a camera or deck to TriCaster, and use the streamlined capture functions begin ingesting clips for editing or live playback. Simple Start, Stop and Pause buttons make clip capture exceedingly simple.

Picture Player

- TriCaster's Picture Player is one of several inputs to the video mixer, and can display images in full detail, with the ability to set specific playback times for each image in the list.

Audio Mixer

- Each source (mic1, mic2, line, and VCR) has its own audio level controls and a single output volume control. Verify the quality of your signal with on-board audio meters as well as with the integrated headphone.
- Each input has Balance, EQ and Solo output. The mic inputs also have an automated Talk Over button, to quickly reduce the volume of all other inputs, giving that microphone level priority. TriCaster PRO adds balanced audio and phantom power.
- Bring in music or audio files through the capture panel or across the network, and bring them into your project without importing or converting anything.
- TriCaster accepts .wav, .MP3 and DV audio for immediate playback with control over left and right channels, a master audio slider and even a visual stereo positioner.

TriCaster PRO: Provides a complete portable studio for the professional producer with the ability to mix component, composite and S-Video camera sources. Produce your show with network style virtual sets, balanced audio, an integrated character generator, broad file format support, increased storage and much more. (NETCPO) **Call or Log-on**

TriCaster STUDIO: Live production workhorse able to live switch between six cameras with real-time chroma keying, live titling, audio mixing, live video streaming and more. Has all of the power of a broadcast control room in one easy to use appliance. LiveSet virtual set technology allows you to achieve the look of a sophisticated studio setting within a very small studio space without the need for external equipment. (NETCSF) **Call or Log-on**

TriCaster BROADCAST: With SDI support, delivers enhanced efficiency and reliability. With audio embedded with the video signal you can depend on a fast, professional setup. Whether you rely on a team or operate on your own, TriCaster BROADCAST makes it possible for you to deliver your network quality program to video, projector and web stream with a full range of professional tools including six camera inputs, live virtual sets, double box effects and much more. (NETBCF) **Call or Log-on**

TriCaster TCXD300: High-definition, network-quality portable production solution. In one small box you gain multi-channel HD switching, HD network-style virtual sets, HD titling, HD digital disk recording, audio mixing, HD editing, full HD streaming and more. (NETCXD300) **Call or Log-on**

logickeyboard™

Advance LogicKeyboard



The Advance line of keyboards use direct printing on keycaps with clear bright colors and friendly icon coded keys. They offer excellent graphical artwork and present a functional and stylish appearance, with logical key command groupings. These custom keyboards are based on the original Apple Pro Ultra Thin Aluminum keyboard. They offer plug-and-play setup with any USB-equipped Mac, with good feel and stylish, modern appearance that match the "new Apple look".

- Ideal for post-production facilities, video editors and anyone else who requires all the custom key commands to be readily accessible from a dedicated, clearly labeled, color-coded keyboard.
- They feature all the regular letter, number, and symbol labelling that you will find on a conventional keyboard, so it can either be added to your computer in conjunction with your conventional keyboard or simply be used as a substitute for it.

For Adobe Photoshop CS4	CALL
For Adobe Premiere Pro CS3/4 (B&H# LOWUSBAPP)	129.95
For Apple Final Cut Studio 2 Color	CALL
For Apple Final Cut Pro / Express	CALL
For Avid Media Composer (B&H# LOWUSBAMC)	136.95
For Digidesign Pro Tools (B&H# LOWKDDPT)	154.50
For Logic Pro 8 (B&H# LOWUSBLPE)	134.50
For MOTU Digital Performer 5/6	CALL

Wireless Keyboards

For Adobe Photoshop -G5 Keyboard (B&H# LOKBWLPSMQ) ..	134.50
For Adobe Premiere Pro CS3	CALL
For Apple Final Cut Pro / Express	CALL
For Logic Pro -G5 Keyboard (B&H# LOKBWLBT)	134.50

Pro Tools Keyboards

Pro Tools Classic Keyboard for Windows - USB/PS2	
LOKBPTW	114.50
Pro Tools Wireless G5 Keyboard (LOKBWLPTM)	159.95

LogicSkin

Made from the best 100% hi-grade Japanese silicone, LogicSkins provide readily accessible custom key commands from a dedicated, clearly labeled, color-coded keyboard. 0.5mm thin with a silky smooth feel, they are soft and flexible, yet tough enough to protect your Mac from dirt, dust and spills.

- Easy removed for cleaning, they are hand washable
- Stays in place -they don't slip or slide



For MacBook, MacBook Pro and MacBook Air

Printed with hotkey shortcuts. Ideal for professionals, as judicious use of keyboard shortcuts can often translate into an efficient workflow.

For Adobe Premiere Pro CS4 (LOKBMBPPCS4)	29.50
For Apple Final Cut Pro (LOLSMBPFCC)	27.95
For Avid Media Composer (LOLSMBP)	42.95
For Apple Logic Pro (LOKBMBLPE)	29.50

Keyboard Covers

Apple Wireless Ultra-Thin for Logic Pro (LOKWUTLPE)	29.50
For Apple Pro Keyboard (G5) (LOLSAPKB)	28.95
For original MacBook Pro (LOLSMPC)	18.95
For MacBook Pro (Original Design) (LOLSAMBKB)	24.50

TIFFEN® Dfx v2 Digital Filter Suite



Free your creative potential. Choose from a palette of up to 2,000 definitive digital filters. Tiffen Dfx v2 represents a technological breakthrough that both complement and expand the extraordinary creative control that Tiffen optical filters bring to imaging. Unlike other software, Dfx v2 offer effects that simulate the extensive range of Tiffen's world-reknown optical filters, plus much more! They also provide ease of use, unmatched performance, tremendous flexibility, and infinite creative control. For videographers and editors, a video production version of the Dfx v2 filter suite allows for

seamless integration with today's most popular post-production software, including Final Cut Pro, Avid Xpress and Adobe After Effects.

Dfx v2 for Avid AVX (B&H # TIDFXAV2).....	599.95
Dfx v2 for Final Cut Pro (B&H # TIDFXFCV2).....	449.95
Dfx v2 for After Effects (B&H# TIDFXAEV2).....	529.95



Magic Bullet Looks

Set the mood on any timeline

Desert sunrise, Arctic tundra, nighttime urban streets: the look of your footage defines the mood. Now you can define the style of your video or film, regardless of on-set conditions, with powerful imaging tools. Choose from 100+ Look presets, to

help set the mood for everything from a wedding to the next Sundance original. You also get the stand-alone Magic Bullet LooksBuilder, for pre-visualizing looks on set or anywhere. Portable presets load into any editing hosts, so the same Looks you create on set are the ones you finish with in the editorial suite: no need for an expensive finishing system. (B&H# REMBL)..... **Call or Log-on**

Magic Bullet Colorista

Simple, fast, industry-standard color correction

Now that you've locked your edit, load Magic Bullet Colorista and make your project shine. Under the hood is the next-generation Magic Bullet engine with real-time processing for fast review and rendering. Colorista offers industry-standard color wheels for precise color control. Plus, use the Power Mask tool to isolate areas - the easiest way to light up your talent. (B&H# REMBC)..... **Call**



Magic Bullet Frames

Give interlaced video the 24p look of film

Start with ordinary interlaced video, apply Frames, sophisticated algorithms, and you'll get the smoother, professional de-interlaced look of 24p film. Choose between motion-adaptive and field-blended approaches, and you'll get high quality footage at high speeds, right in your editor's timeline. NTSC-to-24p and De-interlacing filters offer both a field-blended and a motion-adaptive

de-interlacing approach that deliver great artifact-free video. Includes letterboxing and line offset controls to easily create mattes and adjust the image inside the letterbox area. (B&H# REMBF)..... **Call**

Magic Bullet Instant HD

Crystal-clear HD with one click!

Instant HD up-converts DV video into a variety of HD video formats. Choose from a list of preset resolutions to easily integrate DV video into your next HD production. When scaling from standard definition (SD) to high definition (HD), Instant HD's algorithms generate the missing pixels with integrated sharpening and anti-aliasing for sharp, clear results inside your favorite video application. (B&H# REMBHD)..... **Call or Log-on**



Magic Bullet Suite 09': Get all four plug-ins (Colorista, Frames, Instant HD, and Looks) in one money saving bundle (B&H# REMBS09)..... **Call or Log-on**

ToonIt 2.0

ToonIt 2.0 allows you to give video footage a cartoon aesthetic with unique algorithms to transform your image into cartoon shading and lines. Its plug-ins free you from time-consuming techniques like rotoscoping and hand painting. The plug-ins also offer precise control over styles, shading, and outlines. ToonIt 2.0 also adds the Heat Vision plug-in (mimicking the look of the Predator movies), 14 new styles, new presets, and faster output. (B&H# RETOONRD)..... **Call or Log-on**



VT[5] Integrated Production Suite

A TV studio in a box, VT[5] defines the cutting-edge in live production. More powerful, flexible and affordable than ever before, VT[5] features live switching and Web streaming of up to 24 cameras, live virtual sets, real-time keying, titling, the world's fastest SD & HD editing and video painting.

All this is tightly integrated with everything you need for production, post-production, and graphics.

VT[5]'s extensive HD post production capabilities include sophisticated real-time, non-linear editing, video painting and a full-featured animated character generation package. VT[5]'s real-time, uncompressed video processing with component and optional SDI output delivers unsurpassed video quality. The optional SD switcher adds an additional eight SDI inputs and SDI routing functionality to the system. Designed for the video producer that wants to expand their services without breaking the bank, VT[5] gives the power, flexibility and functionality of a system costing much more. Whether the project calls for a live CEO message integrated with pre-edited segments or a complex edit for broadcast television, VT[5] gives you the tools necessary to complete your next award-winning project.

VT[5] Integrated Production Suite for Windows with SpeedEDIT (B&H# NEVT5F)..... **Call or Log-on**
 VT[5] LIVE! Integrated Production Suite with SX-84 Expansion Box (B&H# NEVT5BQ)..... **Call or Log-on**
 SDI Option for VT[5] (B&H# NESDIOVT)..... **779.00**
 SX84 A/V Switcher Expansion Module for VT[5]: Provides 24 composite and 8 component and Y/C inputs, 4 balanced Audio In/Out, 12 RCA Audio In, 8 RCA Audio Out, RS-422. (B&H# NESX84)..... **2495.00**
 SX-SDI Expansion Box: SDI Switching Hardware Extension (B&H# NESXSDI)..... **Call or Log-on**



3D Arsenal 3D Graphics for Video Editors

3D Arsenal™ is an integrated software solution designed specifically to meet the needs of the video editor for the creation of 3D animation. Based upon award winning 3D technology from NewTek, 3D Arsenal offers an easy solution for you to create your own text and logo objects, and load them along with your video content into one of 3D Arsenal's over 750 pre-built scenes. 3D Arsenal is the perfect companion for every video editor that wants to add dazzling 3D imagery to a project without the hassle of learning complex 3D software because 3D Arsenal does the work for you!

- Creating flying logos is as easy as typing your name.
- Provides dozens of 3D composite scenes that allow you to take your footage shot with a blue or green screen and insert your talent into pre-made customizable 3D environments.
- Map your video onto plasma screens, dancing TV's, video walls and more, to give your productions a real primetime look.

B&H# NE3DAW..... **295.00**



LightWave 3D v9

Model. Animate. Render.

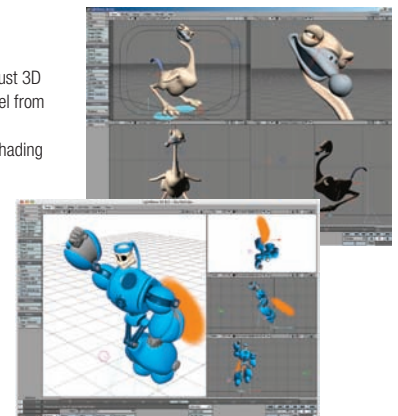
LightWave 3D is the most complete and robust 3D system right out of the box. Create and model from your imagination, quickly and easily, with an industry leading node-based texturing and shading system. A mainstay in visual effects studios, LightWave's open format works seamlessly alongside other 3D compositing applications.

Features—

- Photoreal Motion Blur
- New anti-aliasing methods
- Global illumination and radiosity
- RealLens Camera
- Subsurface scattering materials and shaders
- Screen drawing system in OpenGL
- Dual and multi-core support

LightWave 3D v9 for Mac and Windows with Printed Manual (# NELW3D9M)..... **Call/Log-on**

LightWave 3D v9 for Mac and Windows with Digital PDF Manual (#NELW3D9)..... **Call/Log-on**





ProDAD Software

Adorage Effects contain many high-quality effects plus plug-ins for use with Adobe Premier/Pro/Elements, AVID Liquid, Canopus Edius/Edius NEO, COREL Videostudio, Magix Video Deluxe 15/Video Pro X, Sony Vegas/Vegas Pro, and Ulead Videostudio NLE applications (MS Windows only)

- Adorage Effects Package 1:** Classic Effects (PRAEP1).....**59.95**
- Adorage Effects Package 2:** Particles and Lights (PRAEP2).....**68.95**
- Adorage Effects Package 3:** PIP-FX & Splitscreen Effects (PRAEP3).....**59.95**
- Adorage Effects Package 4:** Universal Tricks (PRAEP4).....**68.95**
- Adorage Effects Package 5:** Diamonds and Composites (PRAEP5).....**59.95**
- Adorage Effects Package 6:** Power FX Pearls (PRAEP6).....**68.95**
- Adorage Effects Package 8:** Eyecatcher FX (PRAEP8).....**68.95**
- Adorage Effects Package 9:** Particles and Objects (PRAEP9).....**59.95**
- Adorage All-in-One Package:** Over 10,000 Quality Effects and Plug-ins (PRAAO).....**429.95**



- Creative Pack 1:** Expand the Capabilities of Heroglyph (PRHCP1).....**98.95**
- Creative Pack 2:** Expand the Capabilities of Heroglyph (PRHCP2).....**98.95**
- Heroglyph Rapid:** Create Titles, Credits and more (PRHR).....**98.95**
- Mercalli Light:** Effective SD/DV Video Stabilization (PRML).....**58.95**
- Mercalli Expert:** Effective SD/DV Video Stabilization (PRME).....**118.95**
- Vitascene LE:** 150 effects and filters including Film Look, Blur and Glow (PRVLE).....**98.95**
- Vitascene:** 500 effects and filters including Film Look, Blur and Glow (PRVLE).....**398.95**

sorensonmedia Squeeze 6

Squeeze 5 for Mac and Windows is a video compression software suite for Mac OS X and Windows. This cross-platform solution is an excellent tool for compressing video for almost any output medium. The Mac version is a Universal Binary application that will run natively on both Power PC and Intel CPUs.

- Outputs MPEG-4, On2 VP6 Pro Plugin, Sorenson H.264 Pro, Sorenson MPEG-4 Pro, Sorenson Spark Pro Mac and Windows (SOS6).....**749.00**



sorensonmedia Squeeze 5 Pro

High-quality video compression, made easy
The Squeeze 5 Pro is a comprehensive compression software suite for Mac OS X. Squeeze allows you to compress video using a wide variety of compression codecs and file formats. It is a Universal Binary application that will run natively on both Power PC and Intel CPUs.

- On2 VP6 Pro encoder, Telestream Flip4Mac WMV encoder, and Bias SoundSoap
- Outputs MPEG-4, Sorenson H.264 Pro, Sorenson MPEG-4, and Spark Pro Mac (SOS5PM).....**599.00**



Broadcast live directly from your computer

Broadcast professional webcasts from anywhere with Telestream's Wirecast live production software. Using only a computer and an Internet connection, you can stream multiple cameras and share live events and presentations on the Web — or record your program to disk for on-demand distribution. Professional titles, transitions and even Chroma key are included in the software, which allows for mixing a variety of media, whether images, movies, or sounds. Wirecast is the perfect application for news, sports, entertainment, corporate/organizational events, and science and educational applications.

- Load up your system with HDV, DV and USB cameras. Switching between them is effortless.
- Generate amazing transitions and effects in real-time, including cross-fade, 3D cube, swinging doors, sliding, etc.
- High quality, GPU accelerated real-time green and blue chroma key
- Includes over 20 built-in professional broadcast quality title themes.
- Output your broadcast to any number of destinations in any number of compression formats. You can scale your broadcast from 3G cell phone all the way to DVD quality.

- Wirecast for Mac OS X (TEEGSKU15689).....379.95**
- Wirecast for Windows 2000/XP/Vista (TEEGSKU68370).....379.95**

Authorized Reseller XSAN 2.2

SAN file system for Mac OS X

Xsan allows you to set up an enterprise-level Storage Area Network (SAN) using Apple Xserve RAID computers. Link multiple Xserve RAID's together using fibre-channel switches. Computers in your network running OS X with Xsan installed will be able to address them as a single volume.

- Xsan Admin 2 simplifies day-to-day SAN administration. Optimize configuration volume settings, or manage file system permissions with less errors.
 - Access Xsan volumes simultaneously from a single workstation or server with MultiSAN
 - Spotlight enables content preview on SAN volumes without even opening a file
 - Share terabytes of data simultaneously over a high-speed Fibre Channel network
 - Optimized workflow configuration settings for higher efficiency and maximum performance
 - High-availability architecture eliminates single points of failure with mission-critical redundancy
- APX2SL.....**879.95**



NLE Multimedia Controller

Contour Shuttle-Xpress

- 5 programmable buttons for frequently used editing commands
- Jog/shuttle control knob for frame by frame control
- Pre-configured for most leading audio and video applications
- Cross-platform compatibility • USB interface



Contour Shuttle-Xpress

COSX.....**49.95**

Contour Shuttle-Pro 2

- 15 programmable buttons for frequently used editing commands
- Jog/shuttle control knob for frame by frame control
- Pre-configured for most leading audio and video applications
- Cross-platform compatibility • USB interface



Contour Shuttle-Pro 2

COSPRO2.....**79.95**



Instructional DVDs

Boost your software and hardware application knowledge with Class on Demand instructional DVD's.



- Complete Training for Avid Media Composer (CLTAMC).....**129.95**
- Basic Training: Adobe Production Premium CS3 (CLTAPPCS3).....**149.95**
- Advanced Training: Adobe Production Premium CS3 (CLTAPPCS3A).....**374.95**
- Complete Training: Final Cut Pro 6 (CLTFCP6).....**49.95**
- Basic Training: Final Cut Studio 3 (CLTFCS3).....**129.95**
- Advanced Training: Final Cut Studio 2 (CLTFCS2A).....**374.95**
- Complete Training: Avid Liquid 7 (CLTL7S).....**129.95**
- Get Started: Avid Xpress Pro (CLTAXP).....**74.95**
- Final Cut Express HD Made Easy (CLTFCEHD).....**49.95**
- Complete Training: Edius 4.5 (CLTENX).....**29.95**

PROAVIO™

dvBOX

Portable Hard Drives

Ideal for use with laptop computers, dvBOX portable hard drives are housed in durable housing and feature a triple interface that allows them to be connected and powered by FireWire-400, eSATA, or USB 2.0. The 5400 rpm drive is hot-swappable and plug-and-play, allowing you to connect and remove it from a computer without the need to reboot. Compatible with Windows XP, Vista and Mac OS X. The drive is bus-powered which makes it truly portable. You'll be able to use it without the need for a power outlet. A supplementary USB power cable is available for systems that cannot provide enough power through eSATA to run the drive.



- 120GB dvBOX Portable Drive (PRDVBP120GB)..... 139.95**
- 160GB dvBOX Portable Drive (PRDVBP160GB)..... 179.95**

dvBOX

Desktop External Hard Drives

High-capacity external hard drives, dvBOX Desktop External Hard Drives feature an interface that allows them to be connected to any computer via eSATA, FireWire-800, FireWire-400, or USB 2.0. Offering a rotation speed of 7200 rpm, they are an excellent storage solution for video editing, high resolution imaging, data backup, or general use. The enclosure features a heat-dissipating aluminum alloy design. This fan-less cooling system reduces noise makes your workspace a more pleasant place to spend time. The drive is hot swappable and plug and play, so there is no need to turn off your computer while connecting or disconnecting it.



- dvBOX Desktop External Hard Drive Enclosure Only (PRDVBDB)..... 94.95**
- 500GB dvBOX Desktop External Hard Drive (PRDVBDS500GB)..... 199.95**
- 750GB dvBOX Desktop External Hard Drive (PRDVBDS750GB)..... 264.95**
- 1TB dvBOX Desktop External Hard Drive (PRDVBDB1TB)..... 364.95**

dvBOX

Professional External Hard Drives with RAID

A professional video RAID-0 solution created just for today's demanding real-time video editing, motion graphics and high resolution multi-track audio. Equipped with the latest Oxford chipset, the dvBOX professional series is an HDV editor's dream come true. A dedicated RAID-0 (striping) controller maximizes available capacity & increased speeds when compared to a off-the-shelf FireWire solutions. With a heat-dissipating aluminum alloy design, the dvBOX desktop drives offers industry proven performance & value, in a unique stylized desktop form factor. Equipped with a hardware-based RAID-0 controller, and a dual FireWire800 interface, users can benefit from a greater amount of real-time video streams, audio tracks and effects.



- 1TB dvBOX Professional External Hard Drive (PRDVBPR1.0TB)..... 314.95**
- 1.5TB dvBOX Professional External Hard Drive (PRDVBPR1.5TB)..... 419.95**
- 2TB dvBOX Professional External Hard Drive (PRDVBPR2.0TB)..... 619.95**
- 3TB dvBOX Professional External Hard Drive (PRDVBPR3.0TB)..... 739.95**

Celerity FC-44ES 4Gb Fibre-Channel

Quad-Channel PCI Express Host Adapter

Available in PCI-X or PCI Express, the Celerity host adapter supports 4Gb Fibre-Channel devices. Choose from quad, dual, or single-channel models. Full-duplex connections support up to 800MB/sec per channel. Fully backwards compatible with 1Gb and 2Gb devices, the adapter features ADS technology for superlative results.



- 4GB Quad-channel PCIe (B&H# ATCTFC44ESOR)..... 2399.95**
- 4GB Dual-channel PCIe (B&H# ATCTFC42ESOR)..... 1199.95**
- 4GB Dual-channel PCI-X (B&H# ATCTFC42XSOR)..... 939.95**
- 4GB Single-channel PCIe (B&H# ATCTFC41ESOR)..... 727.95**
- 4GB Single-channel PCI-X (B&H# ATCTFC41XSOR)..... 834.95**



G-SPEED FC

SAN-Ready RAID Storage Solutions for SD and HD Production

G-SPEED FC is the ideal storage solution for multi-stream, multi-user SD and uncompressed HD work flows. G-SPEED FC features 4Gbit Fibre Channel connectivity and is available in a compact desktop enclosure with 6 Hitachi® SATAII drives. G-SPEED FC can be configured (via a front panel LCD or Web GUI) as a JBOD or in RAID levels 0, 1, 3, 5 or 6. Supports multi-stream ProRes 422 and uncompressed SD/HD workflows. Web-based configuration and management. Auto-rebuild and email notification. Removable cooling fan ensures reliable operation and data integrity. Ships complete with SFP to LC module and 2-meter optical cable. Macintosh and Windows compatible. Comes with 3-year warranty.



- 6TB (GTGS6TBF)..... Call or Log-on**
- 9TB (GTGS9TBF)..... 5599.00**



G-SPEED eS PRO

High-performance, Fail-Safe RAID for HD/2K Production

G-SEED eS PRO provides professional content creators with better than fibre-channel performance for demanding post production applications at a fraction of the cost. Compact and whisper quiet, they feature mini-SAS connectivity to a high performance PCIe x8 IOP RAID controller that supports RAID levels 0, 1, 3, 5 or 6. A single G-SPEED eS PRO enclosure with four 7200rpm SATA II drives in RAID 0 mode supports multi-stream ProRes 422 HQ playback and a single-stream of uncompressed 10-bit HD. Two units with eight drives in protected mode (RAID 3 or 5) supports two simultaneous streams of uncompressed 10-bit HD or a single 2K DPX sequence. G-SPEED eS PRO is simply the most affordable, fail-safe desktop RAID storage solution designed specifically for high-end post. Mac and Windows compatible. Come with 3-year warranty.



- 3TB (GTGSESP3TB)..... 1099.95**
- 4TB (GTGSESP4TB)..... Call or Log-on**
- 8TB (GTGSESP8TB)..... Call or Log-on**
- w/ PCIe host adapter (GTGSESP3TBP)..... Log-on**
- w/ PCIe host adapter (GTGSESP4TBP)..... Log-on**
- w/ PCIe host adapter (GTGSESP8TBP)..... Log-on**

G-SPEED eS

For those who don't require quite the performance of the G-SPEED eS PRO, the G-SPEED eS offers considerable savings. Otherwise the same, it features 3Gbit eSATA connectivity (vs. 12Gbit mini-SAS connectivity), does not support 2K DPX workflows and supports RAID 0, 1, 5, 10 and JBOD.

- 3TB (GTGSED3000)..... Call**
- 4TB (GTGSED4000)..... Call**
- 8TB (GTGSED8000)..... Call**
- w/ PCIe host adapter (GTGSED3000P)..... Call**
- w/ PCIe host adapter (GTGSED4000P)..... Call**
- w/ PCIe host adapter (GTGSED8000P)..... Call**



G-Speed eS PRO XL

High-Performance, Expandable Fail-Safe RAID Solutions for Uncompressed HD and 2K Production

The G-SPEED eS PRO XL is a cost-effective, expandable storage solution designed for content creation professionals working with multi-stream uncompressed HD and 2K workflows, and digital intermediate (DI) film applications. G-SPEED eS PRO XL easily expands by simply daisy-chaining 12- or 16-bay enclosures using locking mini-SAS cables. A total of (8) enclosures can be connected to the system for up to 192TB of incredibly fast online storage! It features the same IOP RAID controller used in the G-SPEED eS PRO system with (2) 12Gbit mini-SAS ports, RAID 0, 1, 3, 5, 6 and JBOD support, and performance over 800 MB/sec. A single 12-bay G-SPEED eS PRO XL can support real-time multi-stream 10-bit 1080/60i and 2K DPX workflows. Adding high-performance storage has never been so simple - or cost effective. Mac and Windows compatible. Comes with 3-year warranty.



- 12TB (GTGSESPXL12)..... Call or Log-on**
- 12TB with PCIe x8 IOP RAID controller (GTGSESPXL12C)..... Call or Log-on**
- 16TB (GTGSESPXL16)..... Call or Log-on**
- 16TB with PCIe x8 IOP RAID controller (GTGSESPXL16C)..... Call or Log-on**

800-947-1175 | 212-444-6675 Quick Dial: 831

High Performance Desktop Storage



PRO Duo-eSATA

External Hard Drive Array

The PRO Duo-eSATA houses two of the latest SATA disk drives; each is rated for a speedy 3Gb transfer rate. Combining the two fast disk drives gets even higher data rates. Using the operating system to stripe the two drives, you will get an amazing 140MB/s. This translates to many real-time video streams for editing and playback to save you time in your editing workflow, getting your project done on time and on budget. If you need more real-time playback and higher data rates than FireWire 800 can provide, the PRO Duo-eSATA is your solution.



The PRO Duo-eSATA comes complete with two high performance disk drives installed, a two eSATA port PCI-e 1x Host Adapter for workstations or Express Card/34 for laptops, two 1-meter eSATA cables, and a power module.

2TB PRO Duo-eSATA External Hard Drive Array (B&H # DUPDE2000GB3).....Call or Log-on



Quad es
SATA RAID Protected Storage

Your time is money, so protect your creative work as you work. The snazzy looking Quad es model combined with the supplied PCI-e full featured RAID controller provides a sweet spot for price and performance the video professional demands. The stylish looking Quad es is fully populated with 4 or 5 hard disk drives giving a top capacity of 4TB in RAID 0 striping performance mode, this is about 55 hours of 8 bit uncompressed SD video. Handles HD resolution as well. Equipped with a large 120mm fan, virtually the entire rear panel is designed to circulate cool air through the hard drives. The fan is large but it is tame, it operates at a lower RPM and it's very quiet. Cool drives means happy drives. Dulce Systems confidently provides the industry's longest warranty-42 months.

The fully loaded RAID controller is highly configurable but yet it is simple to use. The controller supports RAID 0, 1, 3, 5 and JBOD with hot spares.

- The instant availability and background initialization features saves you from hours of RAID format time. In fact, the Quad comes pre-formatted for Mac OS X. For Windows a short format process is required. The Quad es is supplied with an 8 lane PCI-express RAID controller.
- A web browser accessed RAID Manager provides quick and easy RAID management. The Quad comes pre-configured for Mac OS X in RAID 0 mode, so it might not be necessary to access the RAID Manager initially. But, should you want to change the configuration or manage the disk drives, you are just a couple of clicks away from the RAID Manager.

2TB Quad-e4S Hard Drive Array (B&H # DU4R500).....Call or Log-on

3TB Quad-e4S Hard Drive Array (B&H # DU4R750).....Call or Log-on

4TB Quad-e4S Hard Drive Array (B&H # DU4R1TB).....Call or Log-on



PRO DQ g2

The Fastest PCIe RAID 3/5/6 Protected Storage

The PRO DQ g2 (generation 2) improves on the original field-proven SATA RAID to benefit demanding video editing and content creating professionals. The fastest Extended PCIe SATA RAID storage in it's class - over 100MB/sec. The high-performance RAID controller is enhanced with an Intel IOP348 RAID processor running at 1.2GHz producing reliable data protection and exceptional data throughput.



Additionally, the PRO DQ g2 is fully populated with 8 enterprise class high performance 1TB 3.5" 7200 RPM SATA disk drives, running in RAID 3 or 5 protected mode, the PRO DQ g2 can pump out 690 MB/s sustained. That is over 100MB/sec faster than the earlier models! Want to run faster? Configure the RAID engine to RAID 0 mode and the PRO DQ will scream at 800 MB/s. In the double protection RAID 6 mode the PRO DQ g2 at 580MB/s will out run other lesser protected RAID storage. All this performance translates into productive real-world work flows. Look at all the real-time playback the PRO DQ g2 can provide, your creativity has never been this efficient.

2TB PRO DQ Hard Drive Array (B&H # DUICE2).....Call or Log-on

4TB PRO DQ Hard Drive Array (B&H # DUICE4).....Call or Log-on

6TB PRO DQ Hard Drive Array (B&H # DUICE6).....Call or Log-on

8TB PRO DQ Hard Drive Array (B&H # DUICE8).....Call or Log-on

CalDigit VR

Quad Interface Two Drive RAID

The VR is a combination of FireWire VR and S2VR Duo, supporting a quadruple interface for easy connectivity (Firewire 400/800, USB 2.0, and eSATA). There is no performance loss when daisy chaining the VR using Firewire 800. The VR's modular design provides two hot swappable drive modules and an easy to read front LCD. With support for RAID 0, 1, and JBOD the VR can reach speeds of up to 200MB/s, and includes an easy to use GUI for configuration and environmental monitoring which supports email notification.



1.28TB VR (B&H # CAVR2B1.28TB).....Call or Log-on

2TB VR (B&H # CAVR2B2TB).....Call or Log-on

3TB VR (B&H # CAVR2B3TB).....Call or Log-on

CalDigit VR mini

The VR mini is an innovative, compact and bus powered two drive RAID system, supporting a quadruple interface for easy connectivity. The VR mini's modular design provides two removable drive modules and an easy to read front LCD. With support for RAID 0, 1, and JBOD the R mini can reach speeds fast enough for high definition video editing. It includes easy to use software allowing for firmware updates, configuration, and monitoring which even supports email notification.



1TB VR mini (B&H #CAVRMINI100).....Call or Log-on

320GB Spare Drive for VR mini (B&H #CAVRMINI320).....99.95

500GB Spare Drive for VR mini (B&H #CAVRMINI500).....139.95



CalDigit HDPro

External Hard Drive Array

Eight-drive hardware RAID supporting RAID 0, 1, 5, RAID 6 & JBOD in 20Gb ultra-high bandwidth connectivity. Active Sustained Transfer Technology (ASTT) to maintain stable performance and supports professional video editing. With CalDigit PCIe switch, you can connect as many HDPros as you want. State-of-the-art performance, an extreme level of reliability, unsurpassed user friendliness combined with the lowest price per gigabyte! HDPro is also a SAN-Ready storage subsystem enhancing scalability, usability and reliability of heterogeneous environments. Upgradeable cache memory up to 2GB. Useable capacity to 8TB.

2TB (B&H # CAHDPROD2).....Call or Log-on

5.12TB (B&H # CAHDPROD5).....Call or Log-on

8TB (B&H # CAHDPROD8).....Call or Log-on

CalDigit HDElement

A new horizon in RAID storage with high performance and protection, HDElement is the ultimate solution for reliability with support for RAID 0, 1, 5, 6, 50, 60 and JBOD. The HDElement is the compact 4-bay hardware RAID storage that you've been waiting for. It comes with CalDigit's RAID Card that gives you hardware protection for your valuable data. It also gives you room to grow. Thanks to CalDigit RAID Card's multiple external ports. You can connect up to 3 HDElements, that's up to 12 additional drives.



- Powered by the CalDigit RAIDCard, the HDElement has a 100% hardware disk controller that comes with its own independent CPU. This means that the CPU uses less cycles and power than a software solution, and leaves your workstation's CPU free to do what it has been designed for - running your applications. Hardware RAID also gives you the ultimate in protection from OS corruption or crashes while a software application gives no protection at all.
- Any highs (peaks) and lows (drops) during data transference are equalized by ASTT (Active Sustained Transfer Technology). It optimizes the best transfer size and timing between the RAID controller cache and the host machine.

4TB HDElement External Hard Drive Array w/o RAID card (B&H # CAHDE4TBEU).....1499.00

4TB HDElement External Hard Drive Array w/x8 RAID Host Card (B&H # CAHDE4TBRC).....1995.00

6TB HDElement External Hard Drive Array w/o RAID card (B&H # CAHDE6TBEU).....2049.95

1T-C2-100 / 1T-C2-150

Video Down-Converters

High-quality scaling from computer or HDTV signal to standard video formats. Handles computer resolution up to 2048x2048 and HDTV resolutions up to 1080p. Inputs include looping, RGBHV up to 2048x2048, on an HD-15, (2) composite, (2) S-Video, RS-232 (9-pin).



- 1T-C2-100** #TV1TC2100 **599.95**
- 1T-C2-150** Adds genlock, chromakey, and lumakey #TV1TC2150 **774.95**

AVT-3160 / 3170 / 3190

Scan Converters

Convert PC and Mac computer signal resolutions 640x480, 800x600 and 1024 x 768 resolutions to standard analog video. A zoom and pan feature allows you to enlarge, and position a portion of the computer screen to fill the entire video screen. Multiple levels control image brightness and sharpness, with 5 line anti-flicker filter. Underscan and overscan Switch.



- AVT-3160** #AVAVT3160 **149.95**
- AVT-3170** With genlock, overlay, and internal keyer #AVAVT3170 **Call or Log-on**
- AVT-3190** With 1080i HDTV inputs, 2D flicker filter, and aspect ratio adjustment #AVAVT3190 **394.95**

CS-320R / 450R / 460

Scan Converters

Scan converters that inputs a computer generated video signal up to 1024x768, and outputs a standard resolution composite, Y/C and RGBS signal in the NTSC and PAL television standard. They work very well for computer generated presentations, eliminating interlace flicker without resolution loss.



- CS-320R** #AVCS320R **\$259.95**
- CS-450R** with Overlay (Genlock) #AVCS450R **374.95**
- CS-460R** Internal Scan Converter with Genlock/Overlay #AVCS460 **Call or Log-on**

EXT-HDMATE-S

Video Up-Converter

Scale up standard or high-definition video sources to resolutions up to 1080p. Inputs include (2) component and (1) DVI source. Digital TOSlink and analog audio inputs. On-screen menus for easy setup and image adjustment are accessible via the supplied IR remote control. Digital TOSlink and analog audio inputs are supported.



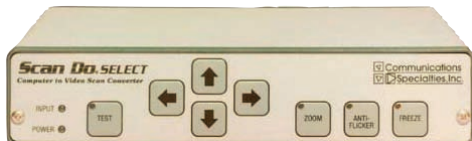
- Single Link Range—1080p/1920 x 1200

#GEHMS **Call or Log-on**

1290 / 1291 / 1292

Scan Do Scan Converter Series

These high-performance scan converters support computer signals from VGA, Mac, and RGB, up to a resolution of 1280 x 1024. Built-in color bar generator and RS-232.



Communications Specialties, Inc.

- 1290** Scan Do Select with composite and S-video outputs #COSDS **999.95**
- 1291** Scan Do Pro II with RGB and YUV outputs #COSDPROII **1549.95**
- 1292** Scan Do Pro IID with SDI output #COSDPROIID **2799.95**

C2-2200A / 2250A / 2255A

Video Switcher/Scalers

High-quality scaling to analog or DVI computer and HDTV signals that support NTSC & PAL. Inputs include (2) Composite video, (2) S-Video, and (1) YUV /YPbPr component. Computer input signals can be scaled to resolutions up to 2048 x 2048. Also offer 4 x 1 switching.



- C2-2200A** #TVC22200A **1549.95**
- C2-2250A** Adds picture-in-picture, chromakey, lumakey and mixing #TVC22250A **1959.95**
- C2-2255A** C2-2250A plus SDI #TVC22255A **2249.95**

EXT-HDSI-2-DVI-SSL / SP

HD-SDI/DVI Scalers

Scale up SD/HD-SDI single or dual-link mode sources to a full single-link DVI-D output signal. Outputs resolutions up to 1080p. Includes Gennum's XVP scaler for superior picture quality. Controlled with an IR remote control or via RS-232 connection.



- EXT-HDSI-2-DVISSL** Single-link SD/HD-SDI to DVI #GEHSDCSLS **841.95**
- EXT-HDSI-2-DVI SP** Two SDI/HDSI connectors to DVI #GEHSDCSG **974.50**

CVG-719XL / CVG-720XL

7 Input Presentation Scaler with Audio

Multi-standard video to RGBHV scaler, and 7-input seamless presentation switcher. Digitally reprocesses the signal and regenerates the video at a chosen line and pixel rate format. Convert composite, Y/C, component, VGA-UXGA, & DVI-D signals to fourteen user-selectable pixel rates—1024 x 852/1024, 1366 x 768, 1365 x 1024, 1280 x 720, 720 x 483, 852 x 480, 1400 x 1050, as well as a user desirable output mode, and 3:2/2:2 pull-down. Built-in proc-amp for video and RS-232 control.



- CVG-719XL** #COCVG719XL **Call or Log-on**
- CVG-720XL** With picture-in-picture #COCVG720XL **Call or Log-on**

C2-1100 / 1150

Video Down-Converters

C2-1100 down-converter with CORIO2 technology provides high-quality scan conversion from computer or HDTV signals to standard video formats. Handles any computer resolution up to 2048 x 2048 at any vertical refresh rate and all HDTV resolutions up to 1080p. Video outputs are switchable between NTSC and PAL. Connectors include— HD-15, Composite, S-Video and YUV Component, RS-232. Rack mountable.



- C2-1100** #TVC21100 **1074.95**
- C2-1150** With genlock #TVC21150 **1399.95**

IMAGE PRO HD SERIES

Multi-Format Signal Processors

The Image Pro HD's are powerful, all-in-one signal processors that accept a wide range of video inputs and funnel them into different signal formats. They function as high-performance video scalars, scan converters, switchers and transcoders. This is ideal for converting RGB, HDTV, component, S-video, Composite (NTSC, PAL, and SECAM), DVI, SDI and HD/SDI into user-selectable video formats. Aspect ratio conversion, memory presets, test patterns, genlock, picture adjustments, and motion adaptive de-interlacing detection included.



- SD** #BAIP **4399.95**
- SDI** #BAIPSDI **5299.95**
- HD-SDI** #BAIPHD **6999.95**

800-947-1175 | 212-444-6675 Quick Dial: 831

Scan Converters, Scalers & Standards Converters

VP703XL / VP704XL

Multi Standard Scan Converters



Scan converts RGBHV signals to component YUV, RGBS or RGBHV, Y/C and composite video. Down-conversion to NTSC or PAL.



- VP703XL** RGBHV Video, Looping, VGA to SXGA #KRVP703XL..... **Call or Log-on**
- VP704XL** RGBHV Video, Looping, VGA to UXGA #KRVP704XL..... **Call or Log-on**

VP725DS

Digital Scaler/Switcher



Scale any composite, S-Video (Y/C), component video (YUV), DVI video or computer graphics video signal up or down to a selectable graphics or HDTV output resolution.



Provide glitch-free switching between sources through FTB (fade-thru black) switching technology.

- #KRVP725DS 18 Input switcher/scaler..... **Call or Log-on**

BHD930-AG / BHD930-DG



The HD Scan XT920 is a broadcast and professional



computer-to-HDTV scan converter. Ideal for HDTV presentations, it converts workstation, PC, or Mac graphic images up to a resolution of 1600x1200 to HDTV. HD Scan features real-time conversion with sized aspect ratio and linear or non-linear zoom up to 200%. HD Scan comes with dual HD-SDI output, and analog tri-level sync HD-YUV output. Compatible with HD genlock.

- HD-SDI & Analog HD-YUV Outputs—720p, 1080i or 1035i 59,94 Hz (60), 50Hz, and 1080p

- BHD930-AG** Analog w/genlock #ANBHD930AG..... **7383.95**
- BHD930-DG** Digital w/genlock #ANBHD930DG..... **6965.95**

C2-2150A / C2-2155A

Scan Converter/Down-Converter



TV One's exclusive CORIO2 technology provides high-quality scan conversion from DVI or



analog computer or HDTV signals to standard video formats. Handles computer resolutions up to 2048x2048 at any vertical refresh rate and all HDTV resolutions up to 1080p. Features picture-in-picture, chromakey, lumakey, and mix.

- C2-2150A** #TVC22150A..... **1699.95**
- C2-2155A** With SDI output #TVC22155A..... **2179.95**

iSCAN VP-50 / VP50 PRO

High-Definition Video Processors



This A/V hub converts standard or high-definition from a DVD Player, VCR, PVR, HD set-top box,



game console, or PC to the built-in output resolutions. Resolutions between 480p and 1080p are supported, including popular 720p and 1080i HDTV resolutions. Included—Motion and source adaptive video de-interlacing for NTSC, PAL and SECAM sources, a 12-bit D to A processor, automatic chroma up-sampling correction, and full frame TBC. The MM606 adds THX certification, mosquito noise reduction, fine detail and edge enhancement, and HD-SDI option.

- iScan VP-50** #DVISVP50..... **2395.00**
- iScan VP-50 Pro** #DVISVP50P..... **2473.89**

MINI-UPC-4F

Mini Standalone High-Quality Up Converter



The unit designed to up convert SD/HD-SDI signals. Use this add-on, peripheral device with your non-linear editing system to achieve conversions.



- Features (1) SD/HD-SDI input and (2) SD/HD-SDI outputs • Teranex's PixelMotion de-interlacing technology • Aspect ratio conversion and detection

- #TEMNIUPC4F..... **Call or Log-on**
- #TEMINISDSTD MINI-SDSTD SD Standards Linear Converter..... **Call or Log-on**
- #TEMINIUDCSN with Noise Reduction..... **Call or Log-on**

TR-50

Standards Converter



Built-in TBC (Time Base Corrector) for better signal synchronization, and a selectable PAL, NTSC color bar generator. Automatic input system detection.



- Converts from every TV system in the world—PAL, NTSC, SECAM
- Converts from—PAL B-G-D-K-I PAL-M PAL-N NTSC 3.58 NTSC 4.43 SECAM PAL-60 To—PAL B-G-D-K-I NTSC 3.58

- #TETR50..... **359.95**

BC-0909-DA

Universal Digital Converter



Digital video to analog converter that converts analog high-definition (SMPTE-260/274/296M) to digital (HDSDI), XVGA, SXGA and WXGA to digital (HDSDI SMPTE-292M), analog composite (PAL/NTSC) to digital (SDI SMPTE-259M), and Y/C (S-Video) to digital (SDI).



- Includes 2x over sampling and an adaptive filter
- 10-bit analog-to-digital data sampling
- Built-in comb filter offers noise reduction on composite and Y/C signals.

- #MABC0909DA..... **849.95**

FC-7402

Digital to Analog Standards Converter



This SDI digital video to analog video converter features a variety



of analog video outputs. Converts 625 or 525 SDI, with output supporting NTSC, and PAL-B,D,G,H,I or N operation. It has a fully adjustable accurate image processing amplifier, 10-bit quantization image processing, and a color bar generator rated at 75% for SDI image adjustment. One SDI input with RS-232 control, and composite, Y/C and component outputs.

- #KRFC7402..... **Call or Log-on**
- #KRFC7501..... **Call or Log-on**

CDM-830TR

Standards Converter



The unit has the ability to convert NTSC, PAL and SECAM signals. It also has built in TBC for stable video passage and conversions.



- This device has the ability to automatically detect the input television standard
- Processing controls are available to adjust brightness, contrast, color saturation and phase
- Rack mountable

- #AVCDM830TR..... **999.95**

MD-0114 / MD-0114-EQ

1x4 Composite Video Distribution Amplifier

Marshall 1x4 composite (BNC) distribution amplifiers distribute a composite video signal input to (4) signal composite outputs. The MD-0114-EQ step-up offers gain and EQ adjustments. Ideal for desktop video or signal distribution for multimedia applications.



Marshall

MD-0114 1x4 #MAMD0114	74.69
MD-0114-EQ 1x4 With gain & EQ controls #MAMD0114EQ	139.99

VP-200N / 300N / 400N

High-Resolution XGA Distribution Amplifiers

Comprehensive's high-performance XGA amplifiers are designed for use with computer graphics video signals ranging from VGA to UXGA. Capacity can handle a bandwidth up to 400MHz and is HDTV compatible.



KRAMER

VP200N 1x2 XGA #KRPV200NK	Call or Log-on
VP300N 1x3 XGA #KRPV300NK	Call or Log-on
VP400N 1x4 XGA #KRPV400NK	Call or Log-on

1T-DA8CVB / 1T-DA8SV

1x8 Analog Video Distribution Amplifier

Amplifies and distributes a single analog video input into eight separate video signal outputs. Ideal for distributing a single video signal throughout a facility or multiple home displays. Durable, rugged metal case for adequate shielding.



ITXONE

1T-DA8CVB 1x8 composite (BNC) D/A #TV1TDA8CVB	129.95
1T-DA8SV 1x8 S-video D/A #TV1TDA8SV	129.95

HD-D205

HDMI Distribution Amplifier

Split (2) HDMI video sources to (5) HDMI displays. Daisy-chain up to (4) of these units for increased distribution capacity. This unit features built-in signal amplification to ensure lossless, noise-free signal transmission over extended distances. Blu-ray compatible and HDCP compliant on all output channels.



RT COM

1T-HDMI-612 / 614 / 618

HDMI Distribution Amplifiers

Designed to convert (1) HDMI input into multiple HDMI outputs without signal degradation or loss of encryption. Supports 480i, 480p, 720p, 1080i, and 1080p resolutions. Certified by the Silicon Images ATC Laboratory and supports DDWG standard for HDMI, HDCP, and RoHS compliant monitors. Maximum bandwidth capacity of 1.65GHz. Supports a maximum cable distance of approximately 50'.



ITXONE

1T-HDMI-612 #TV1THDMI612	Call
1T-HDMI-614 1x 1x2 HDMI #TV1THDMI618	Call
1T-HDMI-618 1x4 HDMI 8 HDMI #TV1THDMI614	Call

EXT-DVI-144 / 145 / 147

DVI Signal Distribution Amplifiers

Gefen stackable DVI signal distribution hubs allow you to send (1) DVI graphics source to multiple DVI digital displays. The unit includes built-in DVI detection for storage of EDID data and supports DDWG standards for DVI monitors. Supports 1.65 Gbps video amplifier bandwidth, and maintains the highest DVI, single-link 1920 x 1200 video resolution.



Gefen

EXT-DVI-144 1x2 #GE1X2DSDA	259.95
EXT-DVI-145 1x4 #GE2X4DSDA	519.95
EXT-DVI-147 1x4 #GE3X6DSDA	\$759.50

EXT-HDMI-142 / 144 / 148

HDMI Signal Distribution Amplifiers

Output to multiple HDMI/DVI monitors from one video source. Allows satellite receivers, HD-DVD players, and other HDTV devices with HDMI output to be displayed on multiple HD monitors from one source signal. Daisy-chain multiple splitters to form a network. Maintains high-resolution video up to 1080p, and computer resolutions up to 1920 x 1200.



Gefen

EXT-HDMI-142 1x2 #GE1X2HHDA	259.95
EXT-HDMI-144 1x4 #GE1X4HDA	419.95
EXT-HDMI-148 1x8 #GE1X8HMDA	779.95

SDA-172P / LKS-WSU

1x3 SDI Distribution Amplifiers

SDI video distribution amplifiers accept an SDI digital video signal and outputs three signals for distribution. The input automatically adjusts to formats of 143, 177, 270, 360 and 540 Mbps, and re-clocks and equalizes the signal to 250 meters of cable.



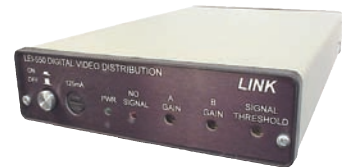
Miranda

SDA-172P 1x3 SDI D/A #MISDA172P	434.95
LKS-WSU Required LKS-WSU universal wall plug-in power supply #MILKWSU	69.95

LEI-550 / LEI-555 / LEI-589

1x6 SDI Video Distribution Amplifiers

Output 6 SDI signals from one source. Offers automatic EQ and dual-gain control outputs to adjust video levels on (2) 3-output banks for variable video level adjustment.



LINK Electronics

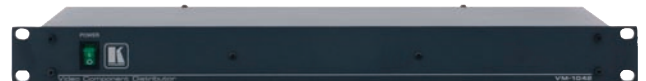
The LEI-155 step-up re-clocks the input signal for distribution over longer distance cables.

LEI-550 #LILEI550	513.95
LEI-555 Re-clocking up to 500 feet #LILEI555	553.50
LEI-589 SD-SDI closed caption decoder, Two fields #LILEI589	839.95

VM-1042 / 1044 / 1055

High-Resolution Distribution Amplifiers

With over 400 Mhz of video bandwidth, the HRS-02-DR5 is the perfect choice for all high-resolution presentation or broadcast applications. Ultra-wide bandwidth supports high-resolution RGB, RGBS, RGBHV, YUV component video and HDTV.



Comprehensive

VM-1042 1x2 component video (200MHz bandwidth) #KRVM1042	443.95
VM-1044 1x4 RGBS, YUV, component video (320MHz bandwidth) #KRVM1044	Call or Log-on
VM-1055 1x5 RGB, RGBS, RGBHV and YUV video (300MHz bandwidth) #COVM1055	Call

4X1V / 4X1VB / 4X1S
4x1 Mechanical Video Switchers

Measuring only 4.7" wide, this pocket-sized enclosure is ideal for tight spaces. These mechanical video switchers use no power, and are great for locations where AC power is difficult to access.

- 4X1V** 4x1 RCA
#KR4X1V **103.69**
- 4X1VB** 4x1 composite, BNC
#KR4X1VB **103.69**
- 4X1S** 4x1 S-video
#KR4X1S **99.95**



AVT-5921 / AVT-5941
HDMI Routing Switchers

Enables HDMI switching of (2) HDMI inputs. Supports HDTV resolutions of 480p, 720p, 1080i, and 1080p.

- 1.65 GHz bandwidth
- HDMI and HDCP compliant
- Infrared remote control

- AVT-5921** 2x1
#AVAVT5921 **39.95**
- AVT-6041** 4x1
#AVAVT6041 **96.95**



1T-SX-632 / 1T-SX-634
HDMI Routing Switchers

The 1T-SX-632 switches between (2) HDMI inputs, and the 1T-SX-634 switches up to (4) HDMI inputs. Supports embedded audio—Dolby® Digital TrueHD and DTS-HD. Supports HDTV resolutions—480p, 576p, 720p, 1080i and 1080p. SDTV resolution support of 480i and 576i. PC resolutions up to 1920 x 1200.

- 1T-SX-632** 2x1 HDMI Switching
#TV1TSX632 **112.95**
- 1T-SX-634** 4x1 HDMI Switching
#TV1TSX634 **149.95**



EXT-HDMI-241N / 341 / 441 / 442 / 841
HDMI Switchers

Gefen HDMI switchers enable effortless HDMI source switching using a single high definition display. Link up to 8 HDMI sources with the DHMI-841 to one HDMI display. Eliminates the need to disconnect then reconnect multiple HDMI sources. When all devices are connected to the 2x1 HDMI switcher and powered on, simply select which source you want to view. An IR remote comes included.

- EXT-HDMI-241N** 2x1 HDMI Switcher #GEEETHDMI241 **Call or Log-on**
- EXT-HDMI-341** 3x1 HDMI Switcher #GE3X1HDMS **259.50**
- EXT-HDMI-441** 4x1 HDMI Switcher #GE4X1HDMSB **Call**
- EXT-HDMI-442** 4x2 HDMI Switcher #GE4x2HDMS **Call**
- EXT-HDMI-841** 8x1 HDMI Switcher #GE8X1HS **Call**



CVG-801XL / 802RS232 / 804XL / 808XL
Vertical Interval Switchers

Up to 8 inputs and 8 outputs can be switched with Comprehensive's vertical interval switchers. DA functionality and glitch-free transitions from referenced input sources to the output destination. Remote operation is possible via RS-232 and RS-485. RS-232 operation accessed through a PC and RS-485 utilizes contact closure. Rack mountable.

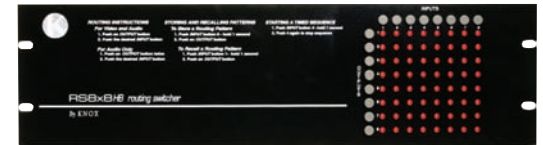
- CVG-801XL** 8x1 composite #KRVS801XLM **553.50**
- CVG-802RS232** 8x2 composite #KRCVG802XL **1105.95**
- CVG-804XL** 8x4 composite #KRCVG804XL **715.99**
- CVG-808XL** 8x8 composite #COCVG808XL **899.95**



RS-88YCB / RS-88RB
Audio/Video 8x8 Vertical Interval Matrix Switcher

Any input can be routed to any or all outputs simultaneously, with this 8 x 8 vertical interval matrix switcher. Stereo audio and video can be switched together or separately for breakout capabilities. Stores 8 preset matrix patterns for quick recall.

- RS-232 control
- Rack mountable
- RS-88YCB** 8x8 S-video (Y/C) #KNRS88YCB **1276.95**
- RS-88RB** 8x8 Component video #KNRS88RB **3229.95**



STUDIO VIDEOHUB
HD/SD SDI Routing Switcher

The Studio Videohub Router from Blackmagic Design is a solution designed to eliminate complicated, manual video patching by allowing you to connect all your equipment to a single router controlled via software. This unit is a broadcast-grade routing switcher that features (16) inputs, (32) outputs, and (16) deck control ports. It supports auto-switching with SD, HD, and 3Gbps SDI. The chassis can be mounted in a standard 19" equipment rack and its slimline profile is only several inches deep.

- #BLVHUBST **Call or Log-on**



862-XL818HD-3A
HD-SDI Video Router with Analog Stereo Audio



This 8x8 HD/SDI routing system features a modular design. Video and audio upgrades are available via plug-in modules. Two power supply slots are accessible from the front panel. One power supply comes standard. A redundant power supply is available as an option. Detachable X-Y front panel control has an Ethernet 10-base-2 coaxial connection. RS-232 is provided through a standard D-sub connector. Modular construction offers configuration flexibility for the user, providing easy options for adding features or upgrading digital modules.

- Maximum of 256 Remote Panels
- #LI862XL818HD 8x8 HD/SD SDI routing **7909.50**



WFM-5000

HD/SD-SDI Portable Waveform Monitor

This studio or the field video monitoring/calibrating tool employs fully digital processing for accurate, repeatable, drift-free operation. It offers automatic format detection, and an integrated adjustable high-luminosity display that is sharp and easy to read in full sunlight. The front-panel has a USB for easy transfer of instrument presets and audio headphone ports, and screen shots and an error log are easily downloaded via the Ethernet port. 32 user-configurable presets for quick configuration recall and monitor for up to (16) embedded channels (1 AES audio input). Audio bars and Lissajous curve displays.



#TEWFM5000 **6744.95**

5850V NTSC

Vectorscope Line Select Monitors

The 5860V composite, waveform monitor accepts two separate analog composite signals with a picture monitor output for viewing and specific line selection for horizontal sweep. The 5850V vectorscope accepts an analog composite signal for color phase measurements, and has a line select signal to display vector information for the selected line.



#LE5850V NTSC Vectorscope Monitor **Call**
 #LE5860V NTSC Waveform Monitor **Call**

5872A

Waveform Monitor and Vectorscope

Waveform Monitor and Vectorscope combination that accepts 2 composite signals. Overlays the signals so they can be compared or viewed simultaneously. Differential Gain/Differential Phase measurements are possible with this unit. Line select with 9 presets, full raster line select, chroma and IRE filters, universal voltage.



#LE5872A **Call**

SVR-1100S8B

2-Channel Waveform/Vectorscope

The SVR-1100 S8B has dual-chan. composite & 1-ch. Y/C, 1-ext. reference w/loop thru inputs and subcarrier capture ± 50Hz. The SVR-1100 DV adds 1-4:2:2 serial digital, parade with vector, analog/component 525/60 & 625/50, Digital encoder SDI to composite.



#COSVR1100S8B Dual-channel **2249.95**
 #COSVR1100DV 4:2:2/SDI **4389.95**

SVR-1700HSD

HD/SD Waveform and Vectorscope

The SVR-1700HSD is a two-channel combination waveform monitor and vectorscope; it measures SDI High Definition/Standard Definition, composite and component HD/SD video signals, offering standard features within a monochrome display.



- Smart Master Control
- 6" CRT
- Multiple displays
- Variable Sweep
- Multi-function
- DA outputs

#COSVR1700HDS **4899.95**

TWIN SPLIT RGB

1x2 RGB Distribution Amplifier with Sync

The Twin Split RGB is a 1x2 component video distribution amplifier that splits either RGB or YUV signals and offers input/output options for various sync signals. Its fully buffered quality output circuitry isolates each output so that if a problem with one cable arises it will not affect the other outputs. Sync options consists of Composite Sync, Separate H&V, Sync on Green, and Sync on All.



Communications
Specialties, Inc.

#COTSRGB **339.95**

CVG-CVA2LD / CVG-SVA-2LD

Video, Stereo Line Drivers / Distribution Amplifier, Level, and EQ

Boost your audio and video signals with these audio and video line drivers, distribution amplifiers. They have one A/V input and drive that video and stereo audio input to two equalized outputs, up to 500 feet.



Comprehensive

CVG-CVA2LD Composite Video
 #COCVGCVA2LD **174.95**
CVG-SVA-2LD S-Video (Y/C) Video
 #COCVGSVA2LD **154.50**

EXT-COMP-141N / EXT-COMPAUD-141

Component RGB Extender

Component (RGB) video extender is a sender with receiver system that transfers signals over single common CAT-5e network cables up to 330' (100 m). Supports HD resolutions up to 1080p without any reduction in video quality. The EXT-COMPAUD-141 can transmit two-channels (left +right) of analog or digital audio.



EXT-COMP-141N Component #GEEVCV **242.95**
EXT-COMPAUD-141 Component with Audio #GEEEXTCOMPAUD **323.95**

EXT-FW-1394B

FireWire Extender

Transmit FireWire-800 or FireWire-400 data signals over 2-strand LC-LC fiber optic cable. This cable supports runs of up to 1640' (500 m), making it an ideal solution for remotely locating FireWire devices. This kit includes a transmitter, receiver, power supply, and FireWire cables. The required fiber optic cabling is not included. Cross platform compatible.



#GEFWE **Call**

KRVP-103

Interface Converter and Line Driver w/ Cable Equalization

KRVP-103 is an interface converter for computer generated video; it accepts video from a computer source on an HD-15 connector and interfaces to a 5 BNC output for RGBHV connectivity. This device also features cable EQ and line amplification to drive a projector and local monitor simultaneously.



OCEAN
MATRIX.

#OCKRVP103 **336.95**