

Adobe

Premiere Elements 9
Video Editing Software

- Organize and edit videos & photos
- Share to Web, TV, mobile devices
- Create DVD and Blu-ray Discs
- Drag-&-Drop SD and HD editing
- Add effects, titles, transitions
- 28 Hollywood movie themes



#ADPE9WM.....**83.25**

Adobe

Photoshop & Premiere Elements 9
Photo/Video Editing Suite

- Organize, edit, share
- Easily upload, burn, or print
- Unclutter or repair photos
- Create DVD and Blu-ray discs
- Add Filters, titles, effects
- Optimized HD editing
- Automatic Online Backup (2GB)



#ADPE9B.....**124.99**

Adobe

Premiere Pro CS5.5

- Import/export from other NLEs
- Script-to-screen workflow
- Tapeless camera support
- Native DSLR support
- Improved Metadata
- Ultra Keyer
- 64-bit compatibility



For Windows (ADWPPCS55W)**799.00**
For Mac (ADWPPCS55M)**799.00**

Adobe After Effects CS5.5

2D/3D Compositing and Animation Software

- Native 64-bit support
- Motion graphics and visual effects
- 2D/3D compositing & animation
- Fast rotoscoping with rotobrush
- Work with HD, 2K, & 4K projects
- AVC-Intra & enhanced RED support
- Color LUT support



For Mac (ADWAECS55M).....**964.95**
For Windows (ADWAECS55W).....**840.10**

Adobe

Production Premium CS5.5

- Photoshop CS5.5 Extended
- Illustrator CS5.5
- Flash Catalyst CS5.5
- After Effects CS5.5
- Premiere Pro CS5.5
- Flash Professional CS5.5
- Soundbooth CS5.5
- On Location CS5.5, Encore CS5.5



For Mac (ADWPPCS55MZ).....**1699.00**
For Windows (ADWPPCS55WZ).....**1699.00**
For Windows -Educational (ADPPCS55WEST)**429.00**

Avid Media Composer 5.5

Production Suite

- Realtime HD video editing
- Native QT, Canon MPEG-2, RED, XDCAM HD, DVC PRO HD editing
- Direct AVCHD Import
- Mix & Match Media
- Full-Quality HD-RGB Processing
- Advanced effects, color correction

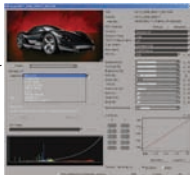


#AVMC5.5 (for Windows and Macintosh)**Call or Log-on**
#AVMC5.5 (Media Composer 5.5 Student Edition)**295.00**
#AVUMC5 (upgrade from Avid DV, Xpress and MC 3 or 4)**Log-on**

Avid DS 10.5

Software-Only Version of Avid DS

Affordable software-only solution delivers powerful finishing and conform workflows for budget-conscious post facilities. Supports full DI workflows for RED, 2K, 4K, DPX and ARRIRAW projects; deep compositing and paint toolsets for high-end graphics and color work; and integration with Avid ISIS® shared storage and Interplay® production management solutions. (AVDSSW10.5) ..**Call or Log-on**



Movie Forms Pro Interactive

- Supports Fill in / Print Out
- Release / Agreement Forms
- Storyboard Forms
- Production Signage Forms
- Government / Copyright Forms
- Deal Memos
- Production Department Forms



#ALMFP1.....**139.99**

Blackmagicdesign DaVinci Resolve

Color Correction Software

The name behind more feature films, TV commercials and episodes, documentaries, and music videos than any other grading system. There are thousands of colorists worldwide who understand the performance, quality and workflow of DaVinci and love it as their trusted partner in creativity.



#BLDRCCS.....**945.25**

BORIS FX Boris Box Set

Includes RED, BCC FxPlug, BCC AE, FEC FxPlug, FEC AE, FEC AVX Boris XML Transfer, Title Toolkit and Media 100 Suite (BOBOXM).....**Call or Log-on**



Final Effects Bundle: Final Effects Complete 5 FxPlug and Final Effects Complete 5 AE for Mac (BOFEFCXPLUGB).....**1026.50**

CINEFORM

Neo Scene

- Converts hard-to-edit HDV, AVCHD, or Canon 5D MKII camera footage to Cine-Form AVI or MOV files.
- Extracts 24p progressive frames from all your HDV or AVCHD material for editing in your favorite NLE.
- 10-Bit / 4:2:2, 1920 x 1080 with 24p support



#CINS (for Mac and Windows).....**119.95**

CINEFORM neo3d

Delivers a comprehensive 3D editorial workflow in Final Cut Pro to reduce end-to-end costs for creating 3D content. Allows for 3D monitoring to an external display, plus real-time adjustment of convergence and color controls implemented as Active Metadata.



- Support for Most 3D Monitors
- Super Fast 3D File Creation
- Real-time Convergence Adjustment
- Includes Neo 4K
- Stereo or Individual Eye Color Adjustment

#CIN3D.....**3000.00**

Final Draft Final Draft 8

Script Writing Software

- #1 selling program for writing movie scripts, TV episodes and stage plays.
- Combines powerful word processing with professional script formatting in one easy-to-use package.
- No need to learn about script formatting rules – it automatically paginates and formats your script to industry standards as you write.



#FIFD8**149.95**

GENARTS

Sapphire

The gold standard for visual effects, Sapphire offers digital artists a collection of more than 200 state-of-the-art image processing and synthesis effects such as glows, glints, lightning, film effects, warps and textures.

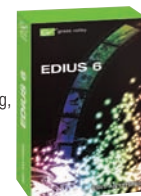


#GESPV2L (for Apple FxPlug v2).....**Call or Log-on**

grass valley

EDIUS 6 Editing Software

- Edit up to 4K Resolution
- GPU-accelerated 3D transitions
- Real-time, multi-track, mixed-format editing, compositing, chroma keying, titling, and timeline output capabilities.
- Multicam workflow-up to 16 sources
- Direct to Blu-ray/DVD export



#GRE6.....**699.95**
#GRUEE6 (EDIUS 6 upgrade from previous versions)**359.95**



ProCoder 3 High-Speed Transcoding Software

- Full HD support and decoding of the AVCHD format MPEG-4 camcorders.
- Supports H.264 to produce iPod and mobile video files
- Batch processing, priority queuing, and simultaneous creation of multiple destination files.
- Professional video filters, corrective audio filters



#GRPC3 **394.00**



Studio HD 1.5 Video Editing Software

- Supports AVCHD and H.264 Format
- 1800 Effects and Titles
- SmartMovie • Montage Feature
- Archive/Restore Tool
- Includes DVD Menu Set
- YouTube Support



Studio HD (PISHD15) **44.99**
 Studio HD Ultimate (PISHDU) **72.45**
 Studio HD Ultimate Collection (PISHDUC) **129.99**



Magic Bullet Looks

Set the mood on any timeline

- Define the style of your video regardless of on-set conditions. Choose from 100+ Look presets, to set the mood for everything from a wedding to the next Sundance original.
- Magic Bullet LooksBuilder, for pre-visualizing looks on set or anywhere.
- Portable presets load into any editing hosts



Magic Bullet Looks (REMBL) **CALL**
 Magic Bullet Quick Looks: Looks Lite version (REMBTQD) **89.00**

NewTek LightWave 3D v10

Model. Animate. Render.

Create and model from your imagination, quickly and easily, with an industry leading node-based texturing and shading system. LightWave's open format works seamlessly alongside other 3D compositing applications.



#NELW10FEM **895.00**
 #NELW10E5SLPP (5-Seat Academic Lab Pack License) **795.00**

POWERPRODUCTION StoryBoard Quick

- Powerful storyboarding tools
- No drawing or artistic skills needed
- Extensive library of characters and props
- Variety of locations
- Print and export options
- Import images
- Draw tools
- Compatible with Mac/Windows

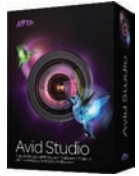


#POSBQ6A (Academic Edition) **Call or Log-on**



Avid Studio

- Advanced Video Editing Software
- Smart Edit Mode & Timeline/Media Editor100
 - Additional HD Video Transitions
 - Unlimited Timeline Tracks
 - Advanced Red Giant Plug-in Package
 - Complete Avid Content Package
 - 5.1-channel Surround Sound Import/Export
 - DVD/Blu-ray Disc Authoring/Burning Tools



#PIASQ **Call or Log-on**

ROXIO Toast 11 Titanium

- Creates professional grade photos/videos
- Saves audio with title tags/artist name
- Copies data even from damaged disks
- Creates custom DVD compilations
- Preserves subtitles on iPad/iPhone
- Uploads edited videos
- Creates hybrid discs/unique content ID
- Bi-directional synchronization



#ROT11T (Toast 11 Titanium) **81.99**
 #ROT11P (Toast 11 PRO) **111.06**



Magic Bullet Suite 10

Includes the entire collection of Magic Bullet applications:

- Colorista II
- Bullet Denoiser
- Frames • Grinder
- Instant HD • Looks
- Mojo • PhotoLooks



#REMBTSD **704.50**



Trapcode Suite 10

Broadcast & 3D Design Plug-ins

With Trapcode Suite 10, the right effects plug-in will always be at your fingertips. Includes:

- Trapcode 3D Stroke • Trapcode Echospace
- Trapcode Form • Trapcode Horizon
- Trapcode Lux • Trapcode Particular
- Trapcode Shine • Trapcode Sound Keys
- Trapcode Starglow



#RETCDS **792.00**



Vegas Movie Studio HD Platinum 11

Video Editing and DVD Authoring Software

- Over 350 video effects
- Over 200 2D/3D transitions
- Up to 10 video/audio tracks
- Primary & secondary color correction
- 5.1 surround and AC-3 stereo sound
- DVD authoring & burning; Blu-ray disc burning



#SOVMSHDP11 **78.50**
 #SOVMSHDP10E (Vegas Studio HD Platinum 10 Educational) **56.95**



Vegas Movie Studio HD Platinum 11

Production Suite

- Vegas Movie Studio HD Platinum 11
- DVD Architect Studio 5
- Sound Forge Audio Studio 10
- Vocal Eraser Tool
- 1,001 sound effects
- NewBlueFX audio and video effects
- Video tutorial DVD
- 400 exclusive music soundtracks



#SOVMSHDP11PS **Call or Log-on**



Vegas Pro 10

HD Video & Audio Editing/Blu-ray Disc Creation

- 3D editing • Image stabilization
- Real-time audio rendering
- Blu-ray disc creation • 4K and RED support
- Native XDCAM EX import and editing
- Event-level audio effect placement
- Includes DVD Architect Pro

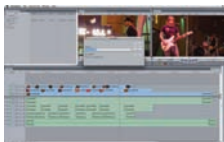


#SOVP10 **Call or Log-on**
 #SOVP10E (Vegas Pro 10 Educational) **Log-on**
 #SOVPPA2 (Vegas Pro Production Assistant 2) **Call or Log-on**
 #SOSTV5000 (Professional Training DVD) **Call or Log-on**



PluralEyes

Save hours in post. Automatically synchronizes all your audio and video clips without need for timecode, clappers or any special preparation.



For Final Cut Pro (SIFEFCP), Media Composer Mac (SIPEMCM), Media Composer Win (SIPEMCW), Premier Pro Mac (SIPEMCM), Premier Pro Windows (SIFEPP), and Sony Vegas Pro (SIVEVP) **149.00**

Presto & PluralEyes Bundle for Sony Vegas Pro (SIPPEVP) or Final Cut Pro (SIPPEFCP) **299.00**



Squeeze 7

Video Encoding Software for Mac & Windows

- High quality codecs and professional pre-processing creates clearer and crisper videos.
- Compatible with 30 input and output video and audio formats
- Dozens of quality filters
- Seamless integration with AVID, Final Cut Pro, and Premiere



#SOS7 (Physical CD) **Call or Log-on**
 #SOS7ES (Electronic Download) **Call or Log-on**



Dfx v2 Digital Filter Suite

Offers a palette of over 2,000 definitive digital filters with effects that simulate Tiffen's world-reknown optical filters, plus much more! Provide unmatched performance, flexibility, and control.



Complete Standalone (TIDFXCMPV2) **149.95**
 For Avid AVX (TIDFXAV2) **599.95**
 For Final Cut Pro (TIDFXFCV2) .. **Log-on**
 For After Effects (TIDFXAEV2) **599.95**
 For Photoshop (TIDFXPCV2) **Call or Log-on**



SD & HD Mini-Converters

- Industry standard stand-alone converters
- Complete range of HD and SDI solutions
- Bullet-proof reliability and world-class support



- D5D:** Analog video to SDI digital video converter. (AJD5D)... **595.00**
- D10AD:** Universal component or composite to SDI converter
AJD10AD **595.00**
- D10CEA:** SDI to analog audio and video converter
AJD10CEA **595.00**
- D5CE:** SDI to NTSC/PAL or component converter (AJD5CE) ... **375.00**
- D4E:** SDI to NTSC/PAL encoder (AJD4E) **250.00**
- D5DA:** Serial Distribution Amplifier (AJD5DA) **250.00**
- HA5:** HDMI to SDI/HD-SDI video and audio converter. Provides two SDI/HD-SDI outputs and supports long HDMI cables on the input.
#AJHA5 **490.00**
- HD10A:** HD analog to HD-SDI converter (AJHD10A) **890.00**
- HD10CEA:** SDI/HD-SDI to analog audio/video (AJHD10CEA) **795.00**
- HD10MD3:** HD Miniature Digital Downconverter (AJHD10MD3) **995.00**
- HD10C2:** HD-SDI and SDI D/A Converter (AJHD10C2) **695.00**
- HDP2:** HD-SDI/SDI to DVI-D and Audio Converter (AJHDP2) **690.00**
- HI5:** HD-SDI/SDI to HDMI video and audio converter for driving HDMI monitors. Provides 2-channel RCA audio outputs for separate audio monitoring if needed. (#AJHI5)..... **490.00**
- HI5 3G:** HD-SDI/SDI to HDMI Video and Audio Converter (AJHI53G) **690.00**
- HI5-3D:** Combines dual 3G SDI inputs to form various multiplexed 3D formats for output on true 3D HDMI 1.4a and SDI monitors. It supports both 2D and 3D inputs (AJHI53D) **495.00**
- HD10DA:** HD/SD (dual-rate) re-clocking 1x6 serial digital DA (AJHD10DA) **495.00**
- 3GDA:** 1x6 3G/HD/SD Reclocking DA (AJ3GDA) **595.00**
- HD5DA:** 1x4 HD-SDI Distribution Amplifier (AJHD5DA)..... **250.00**
- HD10AM:** HD/SD 8-channel AES embedder/disembedder (AJHD10AM) **850.00**
- HD10AMA:** HD/SD 4-channel analog audio embedder/disembedder (AJHD10AMA) **850.00**
- HD10AVA:** SD/HD analog composite or component video and 4-channel analog audio to SD/HD-SDI with embedded audio (AJHD10AVA)..... **795.00**
- FiDO-2T:** Dual channel SDI to Fiber converter (AJFiDO2T)... **645.00**
- FiDO-2R:** Dual channel Fiber to SDI converter (AJFiDO2R) ... **645.00**
- GEN10:** HD/SD Sync, Blackburst Generator (AJGEN10) **390.00**
- DWP:** 100-240v AC 50/60 Hz AC Adapter (AJDWP) **40.00**
- DWPU:** In-line universal input version of DWP (AJDWPU) **65.00**
- Bracket for Mini-Converters (AJRMB10)** **60.00**
- RMB-RO Rackmount Bracket:** To mount the mini converters to any flat surface. (AJRMB) **7.00**
- RH10MD:** HD-SDI to SDI Down Converter, DA rack card to work with the FR1 (AJRH10MD) **1350.00**

KONA LHe

SD/HD Capture Card for Macintosh

KONA LHe bridges the analog and digital worlds by offering I/O for both. It also features dual-monitor desktop viewing for editing ease. Comes standard with a breakout cable, or use with the optional KL-Box for rackmount I/O convenience.

- 12-bit analog component (SD/HD), composite and S-Video I/O
- 10-bit hardware HD to SD down-conversion
- Supports Apple ProRes 422 and Apple ProRes 422 HQ
- HD/SD SDI I/O including support for 1080p 50/60
- 2-ch balanced XLR AES and balanced XLR analog audio I/O
- HD/SD Genlock and RS-422 machine control

- DVCPROHD, HDV, and Apple Dynamic RT Extreme hardware acceleration



- #AJKONALHE **995.00**
- #AJKLBBOXLH (Breakout Box for KONA LHe)..... **299.00**
- #AJKONALSE (LSe PCIe Capture Card for Mac)..... **990.00**

KONA LHi SD/HD Capture Card for Macintosh

Allows analog cameras and VCRs alongside 3G SDI and HDMI v1.3a enabled products to interface to Mac OS X hardware, with integrated support for Final Cut and other QuickTime applications. Steps-up from the KONA LHe with 3G HD/SD SDI I/O, HDMI v1.3a I/O, LTC input (on reference input), and realtime SD to HD up-conversion, HD to HD cross-conversion and HD to SD down-conversion.

- #AJKONALHI **1495.00**
- # AJKLHIBOX (Breakout Box for KONA LHi) **349.00**

KONA 3G Capture Card for Uncompressed SD, HD, Dual Link HD, 2K and 3G

Steps up from the Kona LHi with 2 SD/HD/3G SDI inputs/outputs, HDMI 1.4a support for 3D workflows, 16-channel SDI embedded audio I/O, and up to 16-channel AES digital audio I/O (8 with breakout cable or 16 with optional K3G-Box). Also features separate LTC input and output ports, master or slave configurable RS-422 control port, internal hardware keyer and 2K video format support.

- #AJKONA3G **1995.00**
- K3G Breakout Box (AJK3GBOX)..... **395.00**

ioExpress Portable Video Audio I/O Interface

Interface for mastering and inexpensive monitoring when working with Apple ProRes 422 and 422 HQ, XDCAM HD, DVCPRO HD, and more. Features HD/SD-SDI I/O, HD/SD component output, LTC I/O, 2-channel RCA audio, and RS-422 in a durable and portable device.



- ioExpress (AJIOEXPRESSE) **995.00**
- Io Express Desktop Video Audio I/O Interface (AJIOE) **995.00**
- ExpressCard34 PCIe to PCIe Cable Interface Adapter (AJIOXPRESSCA) **90.00**
- IoCard-X1 1-Lane PCIe Card to PCIe Cable Interface (AJIOCARDX1) **95.00**



io HD Portable FireWire-800 Analog/Digital Capture Device

Connects to a Mac desktop or laptop with a single FireWire 800 cable for un-paralleled video and audio connectivity. Within its portable and rugged form factor (8.2 x 12 x 4.8" and has a built-in handle), io HD offers SD/HD analog and digital I/O including HD-SDI and HDMI, balanced analog and digital AES audio, as well as RS-422, genlock, and LTC timecode connections. Supports Apple's ProRes 422 codec in hardware and offers realtime hardware-based 10-bit up/down/cross conversions.

- #AJIOHD **3495.00**
- #AJIOHD (io LA External Video Capture Device) **3495.00**

Ki Pro • Ki Pro Mini

Portable Digital Disk and Compact Field Recorders

The Ki Pro is a tapeless video recording device that records 10-bit ProRes 422 files from virtually any video and audio source— via SD/HD-SDI, HDMI, and analog inputs—and lets you immediately edit them in Final Cut Pro X. On a table, in a bay, or mounted between a camera and tripod, Ki Pro records hours to a removable storage module with built-in FireWire 800 or to 34mm ExpressCard Flash. Built-in WiFi and Ethernet for complete control via a web-browser, or iPhone. Ki Pro is also ideal for on-set monitoring, providing instant access to multiple display devices simultaneously. Otherwise similar, the Ki Pro Mini uses high-speed CompactFlash cards instead of Storage Modules, emphasizing portability for roles where size matters and conversion and I/O option diversity aren't needed.



- Ki Pro:** With 250GB HDD Storage Module and AC Adapter with 4-pin XLR connector (AJKIPRORO) **3995.00**
- Ki Pro:** Same as above without HDD storage (AJKIPRONDRO) **3795.00**
- Removable 250GB HDD storage module (AJKISTOR250R) ... **265.00**
- Removable 500GB HDD storage module (AJKISTOR500R) ... **385.00**
- Replacement 12V DC Power Adapter for Ki Pro (AJKIIXACADP) **95.00**
- Exo-Skeleton for Ki Pro:** Lets you mount Ki Pro to a tripod and provides a mount for the camera on top. (AJKIEXORO) **Log-on**
- Ki Pro Mini:** Includes AC Adapter with 4-pin XLR connector (AJKIPROMINIR) **1995.00**
- Universal Mounting Plate for Ki Pro Mini (AJKIMINIPLAT)..... **75.00**
- Tabletop Stand for Ki Pro Mini (AJKIMINISTAN) **75.00**

FS1 HD/SD Audio/Video Frame Synchronizer and Converter



Flexible "anything in, anything out" architecture, the FS1 simultaneously works with HD and SD video — in full 10-bit broadcast quality video and 24-bit audio. Supports virtually any input/output— analog or digital, HD or SD. It can up/down convert between SD and HD, as well as cross-convert between HD formats. Supports 8-channel AES, balanced analog, or 16 channel embedded audio with full flexibility and audio processing controls. (AJFS1)..... **3495.00**

- New! FS2 Dual Channel Frame Synchronizer and Converter (AJFS2) **4994.00**



ADVC55

Compact Analog / Digital Converter

- Connects VHS, Hi8, and other analog video equipment to DV camera or editing system.
- Use to capture analog video into FireWire (IEEE1394)-equipped notebook and desktop editing computers.
- Composite (RCA) and S-Video input (NTSC/PAL compatible)
- Unbalanced stereo audio input
- No drivers to install, bus powered when used with a 6-pin Firewire cable.



#GRADVC55.....164.95

ADVC110

Bi-Directional Analog / Digital Video Converter

- Portable digital video converter for capturing and outputting analog video to any Firewire (IEEE1394)-equipped notebook or desktop computer.
- No drivers to install, bus powered when used with a 6-pin Firewire cable.
- Composite (RCA) and S-Video input/output
- Compatible with Mac and Windows
- NTSC and PAL compatible (input only)
- Unbalanced stereo audio input and output



#GRADVC110.....219.95

PSUV5 Power Supply for ADVC-55 and ADVC-110 only (GRPSADVC110).....32.78

ADVC300

Bi-Directional Analog/ Digital Video Converter

- Connects analog video equipment to FireWire (IEEE 1394)-equipped computers for video editing.
- Uses high-quality image-enhancement technology to instantly clean, stabilize, and preserve S-VHS and Hi8 videos in a clean DV format.
- NTSC and PAL compatible (input only)
- Unbalanced stereo audio input and output



#GRADVC300.....399.99

TwinPact 100

Bi-Directional Analog / Digital Video Converter

- Connects analog video equipment to Firewire (IEEE1394) for easy editing
- Converts on-screen graphics to analog and digital video, digital video capture of on-screen graphics, and bi-directional analog/DV conversion.
- Composite (RCA), S-Video, RGB (15-pin) input/output
- NTSC or PAL compatible (input only)
- Unbalanced stereo audio input and output



#GRTP100.....474.95



ADVC700 Broadcast-Quality Bi-Directional Analog/Digital Video Converter

An excellent I/O solution for any DV interface, the ADVC700 boasts a 19" rack-mountable design with component, composite, S-Video, and balanced and unbalanced audio I/O, RS-422 control, and support for LTC timecode and external synchronization. Delivers unparalleled picture quality preservation during analog-to-DV conversion, and perfect audio and video synchronization. Patented PerfectSync technology (see box) ensures impeccable conversion of every frame. The ADVC700 is easily and quickly configurable using the LCD front panel display and jog dial. (GRADVC700).....1624.00



The ADVC700, ADVC1000 and ADVC3000 include patented PerfectSync technology to ensure perfect output synchronization. PerfectSync controls and synchronizes the transfer rate of IEEE1394 communication with an external reference signal. This prevents skipped and duplicate frames and produces perfect conversion of all frames during analog/DV conversion.

ADVC1000 Broadcast-Quality Bi-Directional SDI/DV Converter

A professional, high quality bi-directional SDI/DV video converter designed for broadcast studio equipment, the ADVC1000 features front-side controls and LCD display, analog video and unbalanced audio outputs for monitor preview, and a solid half-1U 19" rackmount design. (GRADVC1000).....1799.00



ADVC3000 Broadcast-Quality A/D Converter

Designed for broadcasters, cable operators, and post-production, the 2RU high ADVC3000 combines the features of the ADVC700 and ADVC1000 converters—and can convert between analog and DV, DV and SD-SDI and analog and SD-SDI. Whether you need to convert YUV component video to uncompressed SDI, DV to S-Video, or simply to de-embed and re-embed audio from a digital video stream, the ADVC3000 gives you what you need. (GRADVC3000).....Log-on



ADVC-HD50 Realtime HDMI-to-HDV Conversion

Instantly converts uncompressed HD video and audio from HDMI devices to HDV format then outputs a FireWire connection for use in a non-linear editing system. Sleek and portable, it requires no drivers or software and is compatible with PC and Mac-based editors. Perfect for anyone who needs HDMI ingest without internal hardware. (GRADVCHD50).....646.79



ACEDVio

Analog/ DV Video Editing PCI Card

- Compatible with Premiere, Final Cut Pro, and Sony Vegas.
- Windows and Mac compatible
- Analog and DV input/output
- Makes use of a second monitor while editing
- Capture and export analog and DV video
- Adjustable brightness, contrast, saturation, hue and sharpness controls on analog input via bundled software (Windows only).



#GRA.....279.00

Storm 3G

Hardware for multi-format 3G-SDI editing, the card features blackburst and tri-level sync support, machine control for xternal VTR ingest, simultaneous editing of SD/HD video, and effects/content preview. Includes Storm 3G PCI Express x4 Bus Card, Edius 6 Software and USB Dongle.



#GRS3GE6.....1799.95



Euphonix MC Transport

Professional, hands-on control and navigation for applications like Final Cut Pro, Logic Pro, and Pro Tools. Features ultra-high resolution optical jog wheel and shuttle ring, ergonomic transport controls, programmable Soft Keys and integrated numeric key pad. (EUMCTRANS).....403.95

MC Control v2

Ergonomic and slim, has a 800 x 480 LED-backlit touch-screen that displays all top-level project information, plus allows users to trigger Soft Keys, solo/mute/record arm tracks, perform surround panning, and more directly from the surface. Features eight touch-sensitive rotary encoders, dedicated transport controls as well as a data entry wheel and four touch-sensitive motorized faders. (EUMCCONTROL2).....Call or Log-on



MC Color: Grading surface that offers detailed control and complete integration with Apple's Color software. The slim-line controller attaches to the Mac via Ethernet, and features high-resolution optical trackballs, track wheels, displays, encoders and a host of programmable keys to speed up and enhance the Apple Color workflow. (EUMCCOLOR).....1519.50

Blackmagicdesign



Intensity Pro • Intensity Shuttle

SD/HD Capture and Playback for HDMI and Analog Video

Mac and PC compatible, Intensity Pro offers HDMI, analog component, composite (NTSC/PAL) and S-Video capture and playback. Instantly switch between HD and SD. Supplied break-out cable includes analog RCA stereo audio I/O and S/PDIF audio output.



Plug-in Intensity Shuttle and get access to 10-bit HDMI, analog component, composite and S-Video capture and playback. Inputs are on one side, and outputs on the other. Powers

via USB 3.0 connection so no need for power supplies.

Intensity Pro (BLIP) or Intensity Shuttle (BLIS).....ea. 189.05
 Breakout Cable for Intensity Pro (BLCIP).....**42.75**

DeckLink SDI

SD/HD-SDI Editing Card

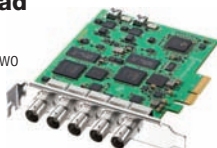
Combines highest quality 10-bit SD/HD-SDI capture and playback with high-end features such as black burst/HD tri-sync reference input, and RS-422 deck control. It can instantly switch between SD-SDI and HD-SDI formats, and includes 8 channels of embedded SDI audio support, so all video and audio connections are made with a single BNC type SDI video cable.



#BLDLSI.....**280.25**

DeckLink Duo • Quad

Two completely independent capture and playback streams via two SDI inputs, and two SDI outputs plus a common tri-sync/black burst reference. Perfect for servers where there are multiple streams or simultaneous capture and playback per system. (BLDLD).....**470.25**



DeckLink Quad provides four independent DeckLink capture cards with broadcast grade multi-channel SDI capture and playback, each with bypass relays, watchdog timer, black burst and tri-level genlock for locking to sources of any frame rate—all designed into a single PCI Express card. (BLDLQ).....**945.25**

DeckLink Studio 2

SD/HD-SDI, HDMI & Analog Editing Card



Connections for SDI, HDMI, analog component (BNC x3), composite (BNC) and S-Video, so all types of equipment can remain connected without recabling. SD only output via

a built in hardware down converter even when running in HD. SD down converted output lets you monitor work in both SD and HD at the same time. Includes 4 channels of balanced analog audio, as well as 2 channels of AES/EBU digital audio. Outputs can be switched to provide 6 channels of digital audio output—perfect for 5.1 surround sound monitoring or multi language work.

#BLBDLKSTUDIO.....**660.25**
 DeckLink Studio Breakout Cable (BLCDS).....**118.75**

Blackmagicdesign



DeckLink HD Extreme 3D

Dual Stream 3D Capture and Playback

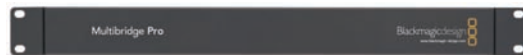


Capture and play back from virtually any video and audio device, even in 3D. Also features advanced full resolution 3D editing, including dual stream SDI capture and playback plus built in HDMI 1.4. Perfect for post production, broadcast and even feature film work, DeckLink HD Extreme 3D switches between SD and HD, and has built in 3 Gb/s SDI, 4:2:2 and 4:4:4 RGB, native 12 bit and frame rates right up to 1080/60p. Also features built in up, down and cross conversion, plus an internal SD/HD keyer.

#BLDLHDE3DP**945.25**
 #BLBODLHDES (Breakout Cable for DeckLink HD Extreme and Studio).....**118.75**

Multibrige Pro 2

Designed to work in broadcast and post-production work, Multibrige Pro 2 can connect to virtually any signal format. It is compatible with SDI, 3Gbps SDI, HDMI, and analog video signals. It also supports multi-channel audio and both NTSC and PAL standards. Fully compatible with SD, HD, and 2K in 4:4:4 or 4:2:2 formats on a single BNC cable. 2K can also be managed via an SDI connection for real-time 2048 x 1556 editing.



#BLDLMBPQ2**1515.25**
Multibrige Eclipse: HD/SD Bi-Directional Converter with 3 Gb/s SDI, HDMI and Analog I/O (BLDLMBEQ).....Call or Log-on

UltraStudio Pro

USB 3.0 SD/HD Capture and Playback

Broadcast-quality SD/HD capture and playback solution for USB 3.0-equipped computers. Combines the latest technology into an attractive ultra-thin design that looks great on your desktop. With the incredible speed of USB 3.0 running at a massive 4.8 Gb/s, UltraStudio Pro easily has enough speed for the highest quality uncompressed 10 bit HD video with the maximum possible real time effects. (BLUSP).....**850.25**

HDLINK Pro DVI • HDLink Pro 3D DisplayPort

Advanced HD Monitoring Solutions

HDLINK Pro DVI includes amazing quality DVI and HDMI monitoring with 6 channels of RCA analog audio out, 3D lookup tables, Dual Link 3 Gb/s SDI input, single link 3 Gb/s DI loop thru output, and support for 24" displays for HD monitoring and 30" displays for real time 2K monitoring. SDI monitoring solution for deep bit depth, HDLink Pro 3D DisplayPort supports full 3D stereoscopic and HDMI 1.4. Get the highest quality in both 4:2:2 and 4:4:4. Perfect for SD, HD and feature film 2K monitoring, supports 1.62 and 2.7 Gb/s DisplayPort monitors with 1, 2 and 4 lanes, as well as DVI and HDMI monitors with an adapter (not included).



HDLINK Pro DVI (BLHDLVIPRO) or HDLink Pro 3D DisplayPort (BLHDLPRODISP).....**470.25**

HyperDeck Studio SSD Deck Uncompressed HD Disk Recorder



Features dual SSD slots and automatically continues recording onto the next SSD when one record disk fills. HyperDeck Studio delivers uncompressed video quality

capture and playback, and disks can be mounted directly on your computer as media storage for editing without any file copying. SD/HD-SDI and HDMI inputs and outputs. User friendly VTR style design with function control, a knob for jog and shuttle, plus an external RS-422 control. (BLHDST).....**945.00**

Video Recorder

Capture video direct to H.264 video files for your iPod, iPhone, Apple TV, YouTube and even full resolution video backups. The Video Recorder plugs directly into your computer's USB and includes easy to use software. Get the highest quality video capture from any composite or component source. Saves time by capturing into the native file format of your mobile device. It can even copy to iTunes ready for syncing.



#BLVR.....**141.55**

New Black Magic Products — Call or Log-in

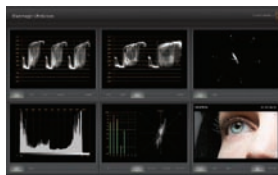
- UltraStudio 3D (BLUS3DT)
- DeckLink 4K (BLDL4K)
- Universal Videohub 72 Crosspoint (BLUVH72CP)
- Universal Videohub 72 Rack Frame (BLUVH72)
- Universal Videohub Optical Fiber Interface (BLUVHOI)
- ATEM Television Studio Production Switcher (BLATS)
- ATEM 1 M/E Production Switcher (BLA1MEPS)
- ATEM 1 M/E Broadcast Panel (BLATEM1)
- ATEM 2 M/E Production Switcher (BLA2MEPS)
- ATEM 2 M/E Broadcast Panel (BLATEM2)



UltraScope

UltraScope are broadcast accurate PC-based scopes which include everything you need for an accurate professional solution you can trust. Perfect for master monitoring, edit suites, color correction, equipment rooms and engineering.

UltraScope: PCI Express card and software, UltraScope works with a low cost PC and display. Automatically detects between SD, HD and 3Gb/s HD-SDI video and includes BNC SDI inputs as well as optical fiber SDI inputs. SDI input is available as a relocked SDI loop through on both optical and copper SDI outputs. (#BLUS)**660.25**



Pocket UltraScope: Portable version of the PCI-card UltraScope, and is designed for location shoots using a USB 3.0-compatible laptop. Same great tools as the UltraScope, automatically detects an SD, HD, or 3Gbps SDI signal and converts it to USB 3.0. (#BLPUS).....**565.25**

VideoHub

Broadcast-quality 3 GB/s SDI Routing Switchers

Eliminate manual video patching forever. Videohub lets you connect all the equipment in your facility and change connections from your computer. Broadcast-grade routers, they offer auto switching SD, HD, 3Gb/s SDI, redundant power and re-clocking. Manual patching limits SDI cable lengths, and is often very complicated to understand, plus patch cables wear out quickly, so you get glitches in video. Videohub eliminate these problems because everyone is permanently connected, and no cables need to be physically changed. They re-clock SDI video for long cable lengths so you always get reliable video. Videohub connects to any computer via USB and is then shared over your local network. Software panels run on Windows and Mac OS X.



Micro Videohub: Perfect for locations where space really counts, such as OB trucks. Includes 16 x 16 SDI routing, auto detection for SD, HD and 3 Gb/s HD-SDI, re-clocking, and built in ethernet, USB and serial router control interfaces. (BLMVH)**1895.25**

Studio Videohub: Compact, features 16 inputs, 32 outputs and 16 deck control ports all packed into a 2RU size less than an inch thick. (BLVHUBST)**2845.25**

Smart Videohub: Same as the Micro Videohub (above) plus adds a built in control panel. Now you can change all routing with the push of a button (BLSVH)**2370.25**

Compact Videohub: Perfect when you need a bigger router in a small size, like post facilities and broadcast trucks. Includes 40 x 40 SDI routing all packed into a 2RU size. (BLCVH).....**4745.25**



Smart Control: Affordable control panel for all your monitors and decks so you can set the input with a single button press. Each button can be set to a different router input and you can set single or multiple router outputs. All buttons include full RGB illumination. Smart Control connects to Videohub via Ethernet and setup software is included. (BLSC)**470.25**

DaVinci Resolve for Mac

World's Most Powerful Color Correction Solution

DaVinci color correctors are the standard in post production since 1984. The name behind more feature films, television commercials, documentaries, episodic television production and music videos than any other grading system, there are thousands of colorists worldwide who understand the performance, quality and workflow of DaVinci and love it as their trusted partner in creativity.



A fantastic solution for SD and HD, and even 2K, colorists can rotate images, re-frame, add corrections, blurs and trackers, and then just hit play, and it's all real time. Software is compatible with high performance GPU cards and control panels such as the Tangent Wave.

- DaVinci Resolve Software (BLDRCCS).....** **945.25**
- DaVinci Resolve Control Surface and Software (BLDVRCP).....** **28495.00**
- DaVinci Resolve - Avid DNxHD Software License (BLDVRSW).....** **495.00**
- DaVinci Resolve Control Surface, Graphics Card & GPU-Xpander Kit (BLDVRCPK).....** **29919.50**
- DaVinci Resolve with Wave Panel Kit (BLDRCCSK).....** **2349.95**

Tangent Devices Wave Control Panel for Resolve Software



Wave brings a new level of affordability and quality to control surfaces. Stylish enough to look good in any grading suite and compact enough to be used for on-set grading, has all the controls you'd expect from a color grading panel without compromising on the essential ergonomics. Features crisp, easy to read, cool-blue OLED displays and custom trackerball units based on a non-contacting optical pickup. With enough buttons and knobs to keep your most needed controls at your fingertips, the Wave increases your productivity, leaving you to get on with what you're best at doing – being creative.

#TAWAVE **Call or Log-on**



Mini Converters

Blackmagic's Mini Converters include auto SD/HD switching, redundant input, AES/EBU and analog audio on 1/4" jacks, combined with 3 Gb/s SDI technology.



Analog to SDI: Converts analog HD/SD component, NTSC, PAL or S-Video to SDI with the choice to embed SDI audio from balanced AES/EBU or analog audio inputs. (BLSDIMC).....**470.25**

SDI to Analog: Convert SDI to analog HD/SD component, composite video, plus balanced AES/EBU and analog audio. #BLSDIAMC**470.25**

Audio to SDI: Embed 4 channels of analog audio or 8 channels of AES/EBU digital audio into SDI (BLCOMCAUS).....**470.25**

SDI to Audio: De-embed 4 channels of analog audio or 8 channels of AES/EBU digital audio (BLCOMCSAU).....**470.25**

SDI to HDMI: Convert from SDI to HDMI with embedded audio, plus balanced AES/EBU or analog audio. (BLSDIHMIMC)**327.75**

HDMI to SDI: Converts HDMI signal to 2 SDI outputs. You can also choose to embed audio from balanced AES/EBU or analog audio inputs.(BLCOMCHS).....**327.75**

Optical Fiber: Simultaneously convert SDI to optical fiber and vice versa. Switches between SD, HD, 3Gb/s HD-SDI video standards and each direction is independent. (BLCOMCOF)**470.25**

UpDownCross: Convert between SD to HD; converts 720p to 1080i or vice-versa; auto SD/HD switching (BLMUCDC)**470.25**

Sync Generator: Tri-level HD or SD black burst (BLSGMC)**280.25**

Power Supply for Mini Converters (BLPSMC)..... **56.05**

Broadcast Converter: 1RU chassis performs bi-directional conversion between SDI and analog/HDMI signals (BLBCC)..**945.25**

OpenGear Converter

Blackmagic's OpenGear Converters give you a great range of conversion while providing the freedom and cost savings of an open standard combined with centralized network control and monitoring. Same features as their respective Mini Converters except in card form.



SDI to Analog (BLCOOCSA)..... **470.25**

Analog to SDI (BLCOOCAS)..... **470.25**

SDI to HDMI (BLCOOCSH)..... **470.25**

HDMI to SDI (BLCOOCHS)..... **470.25**

SDI to Audio (BLCOOCSAU)..... **470.25**

Audio to SDI (BLCOOCAUS)..... **470.25**

Optical Fiber (BLCOOCOF)..... **470.25**

OpenGear Frame (BLDFR8321CP)..... **1190.00**

OpenGear Power Supply (BLPS8300)..... **540.00**

DVI Extender 3 Gb/s SDI Monitor Extender

Extend the DVI-D connection to your computer monitor via SDI cables. Connect your computer displays anywhere in your facility, and to more than one monitor when using any 3 Gb/s SDI router. Also works as a regular DVI to SD/HD-SDI video converter.



#BLHDLXTDVI**375.25**

matrox CompressHD

Accelerator Card for H.264 HD File Creation

- Designed for professional content creators delivering H.264 files for Blu-ray, the web, and mobile devices.
- Create H.264 files, for resolutions ranging from iPod to HD, faster than real time (bitrates up to 50 Mbps).
- Works in systems with or without a video I/O device
- Fits into Mac Pros, Intel-based Apple Xserve systems, and PCs #MACHD **Call or Log-on**



matrox MXO2 Mini

HDMI and Analog I/O for Mac and PC

Use it with a laptop or desktop and applications including Final Cut Pro, Premiere Pro, Photoshop, and many more.

- Easily connects to cameras and monitors
- Capture HD video via HDMI or analog component; NTSC and PAL via analog component, S-Video, or composite
- Playback HD or SD video via HDMI and analog
- Realtime upscaling, downscaling, and cross conversion
- Stereo RCA and up to 8 channels of HDMI audio input and output
- 5.1 and 7.1 surround sound monitoring on the HDMI output
- Turn your HDMI screen into a professional-grade video monitor

MXO2 Mini
For Desktop Systems (MAMXO2MD) **449.00**
For Laptops (MAMXO2ML) **449.00**

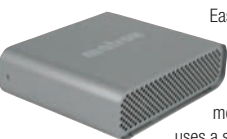
MXO2 Mini with Matrox MAX
For Desktop Systems (MAMXO2MMD) **849.00**
For Laptops (MAMXO2MML) **Log-on**

matrox Convert DVI

HD-SDI Scan Converter

Easily capture and prep computer-based content for TV broadcast. Whether your source is YouTube, Skype, video games or mobile phone videos, Convert DVI uses a simple PC-based user interface to capture any part of the screen; convert it to HD-SDI with genlock; and embed the audio in the SDI signal. Also features flicker reduction, underscan, customizable presets, and a standalone mode that allows it to deliver SDI and analog video from non-PC platforms, such as cameras or medical devices.

#MACDVI **995.00**
New! Convert DVI PLUS (MACDVIP) **1495.00**



datavideo

CG-100 • CG-300 • CG-350

Character Generator Software



CG-100 Software Only (DACG100) **979.95**
CG-100 with SDI Card (DACG100SDIK) **Log-on**
CG-100 with Studio Card (DACG100SK) **Log-on**

CG-300 Software Only (DACG300) **955.00**
CG-300 w/Decklink HD Extreme (DACG300KIT) **1959.00**
CG-350 Software Only (DACG350) **1675.00**
CG-350 w/Decklink HD Extreme (DACG350KIT) **2679.00**

matrox MXO

HD/SD Output/Monitoring Device and Scan Converter for Macintosh

Turns the Apple Cinema Display or other DVI monitor into a professional HD and SD video monitor. Because it's small and portable, it makes a laptop a mobile editing station. It's a frame-accurate, broadcast-quality HD/SD analog and SDI output device ideal for mastering native digital projects directly to tape or to a satellite encoder. And, it can be switched into a genlockable scan converter with HD/SD analog and SDI output. (MAMXO) **995.00**



matrox MXO2 • MXO2 LE Portable I/O for Macintosh

Fits in your laptop bag, and runs for hours on a field battery or the included AC adapter. Streamlines Final Cut Studio and Adobe CS5 Production Premium workflow, the MXO2 provides broadcast-quality input/output, monitoring, and up/down/cross conversion. Users can benefit from file-based workflows with native support for XDCAM and P2. In addition, offers genlock, realtime SD to HD upscaling, and turns your HDMI monitor into a true-color video display you can trust. Also features RS-422 control for frame-accurate capture and print-to-tape with Final Cut Pro and Adobe Premiere Pro. Otherwise the same, the MXO2LE has less audio inputs and outputs and no 5.1 surround sound monitoring.



- Supports up to five simultaneous video outputs: HD and/or SD on HDMI, SDI, and analog component HD, composite, S-Video.
- Video outputs include two HD/SD-SDI, 12-bit analog component, 12-bit composite, and S-Video, one HDMI.
- Provides built-in 5.1 surround sound monitoring via RCA
- Audio inputs include two XLR-balanced, two RCA unbalanced, two AES/ABU, SDI and HDMI embedded (up to 8 channels).
- Audio outputs include four XLR-balanced, six RCA unbalanced for surround sound monitoring, two AES/ABU, SDI and HDMI embedded (up to 8 channels).

MXO2 Complete Portable I/O for Laptop/Desktop (MAMXO2) **1595.00**
MXO2 with Matrox MAX for Desktop (MAMXO2M) **1995.00**
MXO2 LE for Desktop (MAMXO2MND) **995.00** **MXO2 LE with Matrox MAX for Desktop** (MAMXO2MLE) **Log-on**
MXO2 LE for Laptop (MAMXO2MNLZ) **Log-on** **MXO2 LE with Matrox MAX for Laptop** (MAMXO2MNL) **1395.00**

3' MXO2 Host Adapter Cable (MAHOSTCBL1) **Call or Log-on** 10-ft. MXO2 Host Adapter Cable (MAHOSTCBL3M) **89.00**
ExpressCard/34 Host Card for MXO2 (MAEXP34ADP) **99.00** MXO2 PCIe Host Adapter (MAPAMXO2) **99.00**
MXO2 Replacement External Power Supply (MAPWRCL) **49.00**

matrox MXO2 MAX Rack

Rackmountable HD/SD I/O for Macintosh

All the functionality of an I/O card with the convenience of a rackmountable breakout box. Same features as the MXO2, the 2RU high MXO2 MAX Rack is designed for post-production facilities, broadcast news operations, and OB vans where highly-reliable equipment, more audio inputs and outputs, and genlock loop are required. (MAMXO2MRUN) **1995.00**



MOTU V4HD Firewire Video Interface

With one simple plug-and-play FireWire 400 or 800 connection, the V4HD turns your Mac or PC into a powerful HD/SD production workstation equipped with all the video and audio I/O you need. Connect all your gear, from monitors to professional HD cameras, video decks, LCD reference monitors and plasmas – all at the same time, with no cable swapping. Choose your input source, then log and capture HD or SD clips directly into Final Cut Pro or Premiere Pro.

#MAV4HD **1995.00**



MOTU HD Express HD and SD Video I/O for Mac and Windows

Capture uncompressed-quality, digital HD from HDMI-equipped camcorders. Monitor pixel for pixel on plasma and LCD screens. Capture and monitor component HD or SD, plus composite and S-Video (NTSC or PAL). Connects to a Mac or PC tower via PCI Express, or connect to a laptop via ExpressCard connectivity. Supports all standard SD and HD video formats up to and including 1080p30 (720p, 1080i, 1080p & 1080PsF). Supports Apple Final Cut Pro and Adobe Premiere Pro.

- Captures and plays uncompressed HD and SD — 10-bit 4:2:2 color depth and 1920 x 1080 resolution.
- Capture and monitor full-raster Apple ProRes, ProRes HQ or other codecs supported by Final Cut Pro and Premiere Pro.
- Capture 8 channels of embedded HDMI audio. Play back stereo, 5.1 or even 7.1 surround sound directly to powered speakers. Also provides S/PDIF digital I/O with sample rate conversion.



HD Express for Laptop (MACHDMIL) **495.00**
HD Express for Desktop (MACHDMID) **495.00**
HDX-SDI: SDI, HDMI and Analog Video Interface for Mac and Windows Laptop (MAHDXSDI) **849.00**
HDX-SDI: SDI, HDMI and Analog Video Interface for Mac and Windows Desktop (MAHDXSDIP) **849.00**

800-947-1175 | 212-444-6675 Quick Dial: 831



Stratus Pro • Venturi Pro Video Editing Computer

Designed for use with software like Adobe Premiere, Sony Vegas and Avid Media Composer, Rain's video editing computers are custom built. They feature seven PCI and PCI Express expansion slots, USB 3.0, DVD burner, and come installed with

Windows 7 Professional (64-bit) custom-tuned by Rain for audio and video production. They are housed in a sleek chassis with intelligent cooling system, are rigorously tested and certified for stability, and each includes a 30-day trial of the RainCare Audio/Video Support package.

Stratus Pro: Powered by a quad-core 2.8GHz Intel Core i5 "Lynnfield" series CPU, 4GB RAM and nVIDIA Quadro 600 graphics. Has a 640GB 7200rpm drive for the operating system, and a 1TB 7200rpm drive for use as a scratch drive. In Black (RAFRSTP02) **1799.95**

Venturi Pro: Powered by a quad-core 3.06GHz Intel Xeon "Bloomfield" series CPU, 6GB RAM and nVIDIA Quadro 600 graphics. Has a 640GB 7200rpm hard drive for the operating system, and 4TB of scratch storage. Has FireWire-400, and eSATA interfaces for high-speed device connectivity. In Silver (RAFRVENP01)..... **Call or Log-on**

Venturi Pro II: Steps up from the Pro with workstation-class nVIDIA Quadro 4000 GPU with 2GB of memory. Card features 256 CUDA cores, delivering support for Adobe Premiere CS5's Mercury Playback Engine. (RAFRVENP02) **Call or Log-on**



The VTrak E-Class RAID subsystem has been designed to provide industry leading performance and reliability for mission critical environments at an affordable price. The

fully redundant design provides data protection and availability even if a component should fail. Promise offers the storage industry's best phone and email support along with a 3-Year advance replacement warranty. This provides VTrak users uninterrupted productivity for the life of the product.



VTrak E610FD RAID Storage System (PRVTE610FD)	8299.00
VTrak E610IS RAID Storage System (PRVTE610FS)	5799.00
VTrak E310FS RAID Storage System (PRVTE310FS)	4999.00
VTrak E310FD RAID Storage System (PRVTE310FD)	7499.00
VTrak E610sD RAID Storage System (PRVTE610SD)	8299.00
VTrak E610sS RAID Storage System (PRVTE610SS)	5799.00
VTrak J310sS Storage System (PRVTJ310SS)	2569.00
VTrak J310sD Storage System (PRVTJ310SD)	3209.00
VTrak E310sD RAID Storage System (PRVTE310SD)	7499.00
VTrak E310sS RAID Storage System (PRVTE310SS)	4999.00
VTrak J610sD Storage System (PRVTJ610SD)	3929.00
VTrak J610sS Storage System (PRVTJ610SS)	3289.00
VTrak J830sD Expansion Chassis (PRVTJ830SD)	6519.00
VTrak J830sS Expansion Chassis (PRVTJ830SS)	5439.00
VTrak J630sS Expansion Chassis (PRVTJ630SS)	4269.00
VTrak J630sD Expansion Chassis (PRVTJ630SD)	5099.00
2U/12-B Expansion Chassis (PRVJCU2U12)	509.00
3U/16-B Expansion Chassis (PRVJCU3U16)	509.00
SmartStor NS4700 RAID 4-Bay NAS Server (PRNS4700)	849.00
SmartStor NS6700 RAID 6-Bay NAS Server (PRNS6700)	1099.00
SmartStor NS4600 RAID 4-Bay NAS Server (PRNS4600)	499.00
SmartStor NS4600 4-Bay DAS Server (PRDS4600D)	369.00
Internal SuperSwap 4600 SAS/SATA 4-Bay Drive Enclosure in Beige (PRSS4600BE) or Charcoal (PRSS4600CH)	259.00

Internal SuperSwap 1600 SAS/SATA 1-Bay Drive Enclosure in Beige (PRSS1600BE) or Charcoal (PRSS1600CH)	89.00
SAN w/6-1G iSCSI to 6G SAS (PRVTS3K1G4SS)	19999.00
SAN w/2-10G iSCSI to 6G SAS (PRVTS3K10G4S)	22199.00
SAN w/2-8G FIBRE to 6G SAS (PRVTS3K2F4SS)	23199.00
SAN w/4-8G FIBRE to 2-6G SAS (PRVTS3K4F4SS)	25499.00
SAN w/2-8G FIBRE to 2-8G FIBRE (PRVTS3K2F2FS)	24599.00
SAN w/4-8G FIBRE to 4-8G FIBRE (PRVTS3K4F4FS)	29399.00
Shelf Expansion License Key - Fibre Channel (PRVTSLKEF1)	8599.00
Shelf Expansion License Key - iSCSI (PRVTSLKEI1)	7199.00
3-Year Onsite Parts Replacement Service (PRSP3YEAR)	999.00
5-Year Onsite Parts Replacement Service (PRSP5YEAR)	3280.00
3U Power Supply Unit for E630/J630 (PRX30PSU582U)	799.00
4U Power Supply Unit for E830/J830 (PRX30PSU752U)	959.00
VTrak x30 I/O Module (PRVTJ6GIOM)	1169.00
Jx30 Series 750W Power Supply (PRVTPSU750W)	959.00
Jx30 Series 580W Power Supply (PRVTPSU580W)	749.00
x30 4U RAID Subsystem Service Parts Kit (PRPVTH4950LL)	4369.95
x30 3U RAID Subsystem Service Parts Kit (PRPVTH4949LL)	4268.50
x30 3U Expansion Chassis Service Kit (PRPVTH4951LL)	1389.95
x10 Series Drive Carrier (PRVTCARRIER)	45.00
512MB Memory Module (PRVTMMEM512M)	125.00
1GB Memory Module (PRVTMEM1G)	129.00
2GB Memory Module (PRVTMEM2G)	202.00



Advantage Series 2.0 Keyboards

In addition to color and icon coded keycaps, they include two USB 2.0 ports and multimedia keys. Premier Pro and Avid Media Composer keyboards can be used on either a PC or a Mac platform.
For Adobe Premiere Pro (BEKBA2PP)..... **59.95**
For Final Cut Pro (BEKBA2FCP) **59.95**
For Avid Media Composer (BEAKMCM) **59.95**

DV Keyboard 3.0 for Sony Vegas

Built-in jog/shuttle controller, 2 USB 2.0 ports and 3 ports for the optional NeoLite. (BEKBDV3SV) **129.95**

Professional Series 3.0

Jog/shuttle controller, specialty keys, two USB 2.0 ports, and program-specific, color and icon-coded keycaps. Task light with dual LEDs and a 12-inch flexible gooseneck plugs into any of three power ports.
For Premiere Pro (BEKBP3PP)..... **129.95**
For Final Cut Pro (BEKBP3FCP) **129.95**
For Avid Media Composer (BEKBP3AMC) **129.95**



LogicSkin for MacBooks

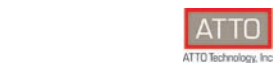
Made from the best 100% hi-grade Japanese silicone, LogicSkins provide readily accessible custom key commands from a dedicated, clearly labeled, color-coded keyboard.
Final Cut Pro Cover (LOLSFCPM) **29.50**
Clear Protective Keyboard Cover (LOLSPSMBU) **19.50**
Premiere Pro CS4 Cover (LOKBMBPPCS4)..... **24.95**
Grass Valley EDIUS Slim Line PC Keyboard (LOKBGVESLU) **99.95**
Sony Vegas Slim Line PC Keyboard (LOKBSVS)..... **104.95**

For Apple Ultra-Thin Aluminum Keyboard

Final Cut Pro Cover (LOLSFCPM89)..... **32.95**
Media Composer Cover (LOLSMCM89)..... **34.95**

Keyboards (Apple Ultra-Thin Aluminum)

Avid Media Composer (LOWUSBAMC)..... **109.95**
Final Cut Pro (LOWUSBFCP)..... **109.95**
Final Cut Pro (Extended Keyset) (LOKBUFCP)..... **99.95**
XLPrint Apple Advance Keyboard (LOLPWAAAKB)..... **89.95**



Celerity 4GB & 8GB Fibre-Channel
PCI Express Host Adapters

Available in PCI-X or PCI Express, the Celerity host adapter supports 4 or 8GB Fibre-Channel devices. Choose from quad, dual, or single-channel models. Full-duplex connections support up to 800 or 1600MB/sec per channel.



4GB Single-channel PCIe (ATCTFC41ESOR)	699.95
4GB Dual-channel PCIe (ATCTFC42ESOR)	1097.95
4GB Quad-channel PCIe (ATCTFC44ESOR)	2367.50
4GB Single-channel PCI-X (ATCTFC41XSOR)	759.95
4GB Dual-channel PCI-X (ATCTFC42XSOR)	939.95
8GB Single-channel PCIe (ATCTFC81EN00)	906.99
8GB FC (SFP) to 8GB SAS/SATA (ATFCBR6500D0)	6495.00
UL5D Dual Ultra-320 SCSI Host Adapter (ATEPCIU5DC).....	350.99

FireWire Components

Belkin	
3-Port FW-400 PCI Host Card (BECFW3PQ)	25.99
2-Port FW-800 ExpressCard/34 Expansion Card (BAF5U14)	78.50
FireWire Notebook Adapter (BECFW3PVSQ).....	47.99
LaCie	
FireWire-800 PCI Host Adapter (LA800PCIC)	42.90
FireWire-400 PCI Host Adapter (LA400PCIC)	14.95
SIIG	
2-Port FW-400 PCMCIA Cardbus Host Card (SINNPCM222S4).....	33.19
2-Port FW-400 ExpressCard/34 Expansion Card (SIFWEC2P).....	41.26
3-Port Combo FireWire-800/400 Cardbus Adapter (SICFW)	67.99
3-Port FW-800 and FW-400 PCI Host Card (SINN831012S2)	57.38
Sonnet	
Allegro 3-Port FW-800 PCIe Card (SOFW800E).....	59.99
Allegro 3-Port FW-400 PCIe Card (SOFW400AE).....	Log-on
6-Pin FW-400 to 9-Pin FW-800 Adapter (SOFAD824).....	Log-on
ADS PYR01394B PCI FireWire-800 Host Card (ADAP811)	39.84
Datavideo VP-314 In-line DV Repeater (DAVP314).....	48.00
Gefen FireWire Repeater 400 (GEFR400).....	71.10



Shuttle-Xpress Shuttle-Pro 2

NLE Multimedia Controllers

- 5 or 15 programmable buttons for frequently used commands
- Jog/shuttle control knob for frame by frame control



Shuttle-Xpress in Black (COSXB) or Silver (COSX)..... **39.95**
Shuttle-Pro 2 in Black (COSPRO2) or Silver (COSPRO2S)..... **79.95**



Instructional DVDs

Boost your software and hardware knowledge with Class on Demand instructional DVDs.
Complete Training for Media Composer (CLTAMC)..... **Log-on**
Final Cut Express HD Made Easy (CLTFCEHD) **Log-on**
Complete Training for TriCaster Studio (CLTNTS) **Log-on**
Master Tricaster by Faraz Ahmed (CLMTT) **Log-on**
Getting Started with Creative Suite 5 PP (CLTACS5PP)..... **Log-on**

