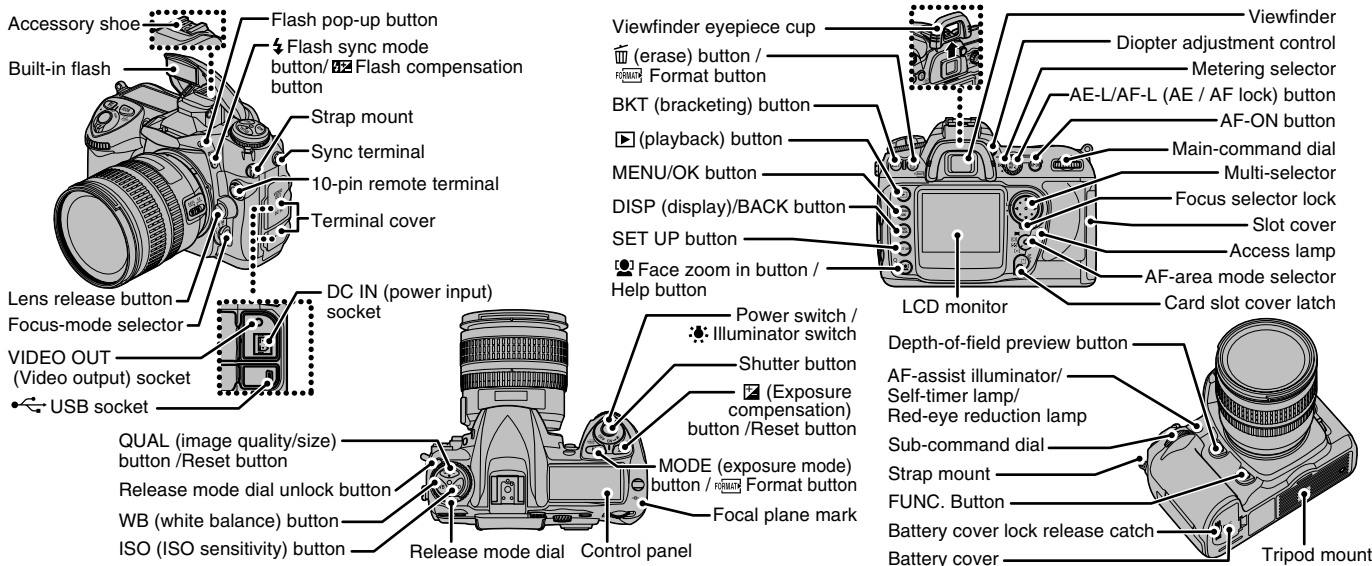


FinePix S5 Pro

Quickstart

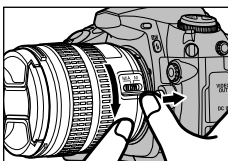
Camera Controls



BL00578-200(1) E

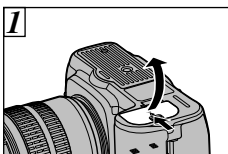
Picture Taking

A. Mounting the camera lens

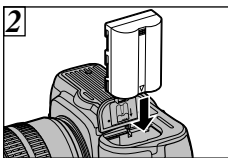


Position the lens in the camera's bayonet mount so that the mounting indexes on lens and camera body are aligned, then twist lens counterclockwise until it locks into place.

B. Loading the Battery

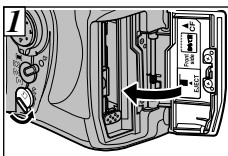


1. Set the power switch to OFF to turn the camera off. Open the battery cover.

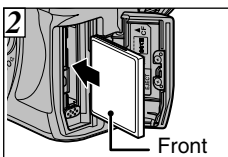


2. Load the battery as shown left. Close the battery cover.

C. Setting up the Camera



1. Turn the card slot cover latch to open the slot cover. Insert the card as shown. The access lamp will light for about a second.

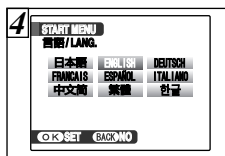


2. Close the slot cover.



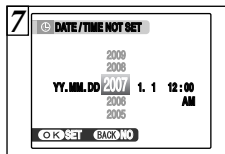
3. Set the Power switch to ON to turn the camera on.

Refer to Owner's Manual for more detailed instructions



4. 言語/LANG. screen appears on the screen.

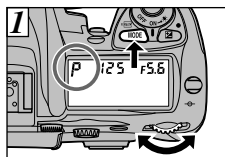
5. Press ▲, ▼, ◀, or ▶ to select the language.
6. Press MENU/OK to confirm the setting.



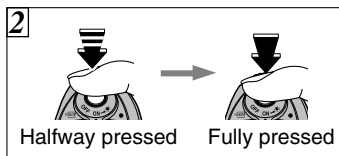
7. You can select your preferred date format.

8. Press ◀ or ▶ to select Year, Month, Day, Hour, or Minute. Press ▲ or ▼ to correct the setting. * Refer to the Owner's Manual for "Turning On and Off".

D. Taking Pictures



1. While pressing the MODE and rotate the main-command dial until P is displayed in the control panel.



2. Press the shutter button down halfway to adjust the focus. Press the shutter button down fully to take a picture.

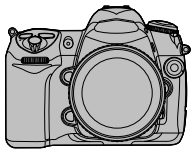
E. Viewing the Images

1. Press the (playback) button.
2. Press the ◀ or ▶ to move through your images.

Still images that can be viewed on FinePix S5 Pro

You can use this camera to view still images recorded on FinePix S5 Pro or still images (excluding some uncompressed images) recorded on a FUJIFILM digital camera that supports CompactFlash memory card / Microdrive.

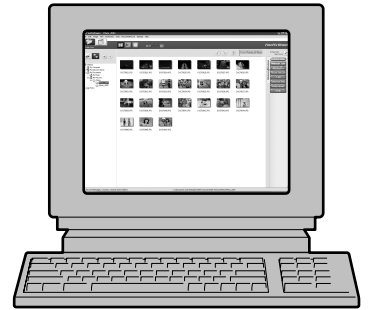
Viewing Images on your PC



A. Installing Software

B. Connecting the Camera to your PC

C. Saving the Images



A. Installing Software

Do not connect the camera to your PC until the software installation is completed.

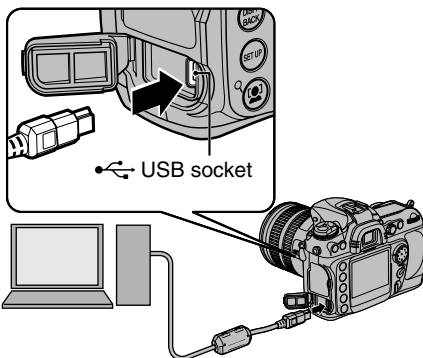
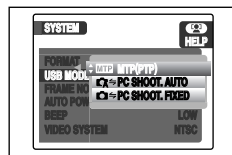
1. Turn on your PC and start up Windows.
 - Users of Windows 2000 Professional or Windows XP should log in by using a system administrator account (e.g. "Administrator").
2. Quit all other active applications until no applications are shown in the taskbar.
3. Load the enclosed CD-ROM into the CD-ROM drive. The installer starts up automatically.
4. The Setup screen appears. Click the [Installing FinePixViewer] button.



5. After installation completed, press [Restart] button.

B. Connecting the Camera to your PC

1. Insert the CompactFlash memory card / Microdrive with images into the camera.
2. Turn the power switch to ON to turn the camera on.
3. Press SET UP to open the [SET UP] menu.
4. Select [MTP(PTP)] for [USB MODE] under [SYSTEM] in the [SET UP] menu.
5. Turn the power switch to OFF to turn the camera off.
6. Connect the camera to your PC using the USB cable (mini-B) included.



7. Set the Power switch to ON to turn the camera on.

If the camera communicates with the PC successfully, PE will be displayed in the control panel and viewfinder. Photographs can be transferred to the computer as described in the manual for the supplied software (on CD).

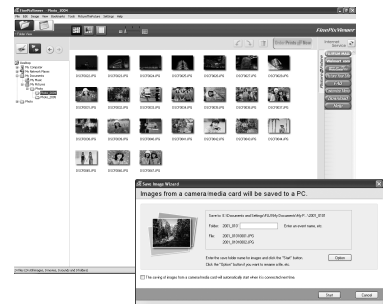
8. Windows 98 SE/Me/2000 Professional

FinePixViewer starts up automatically.

Windows XP

The "Found New Hardware" help message appears in the bottom-right corner of your screen. This message will close when the settings are completed. No action is required.

FinePixViewer starts up automatically.

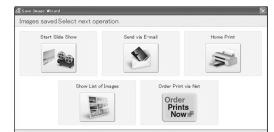


C. Saving the Images

1. The Save Image Wizard starts up. Click the [Start] button.
2. Check that the files are downloaded from the camera to your PC and that a folder with the date is created.
Ex. \My Documents \ My Pictures \ 2007_0120

D. Viewing the Images

1. Click the [Show List of Images] button.



2. Select "Preview" in the View menu to display an enlarged image.

For more information

Refer to "How to use FinePixViewer" in the HELP menu, or "Software Installation" in the Owner's Manual, or visit Fujifilm "Q&A Search" in the following website.

(<http://www.fujifilm.com/products/digital/>)

For Macintosh users, refer to "Software Installation" in the Owner's Manual.