



The Digital Photography SourceBook

Section 10

Software

Color Calibration Software.....	552-555
Adobe.....	556-560
ACD Systems.....	561-563
Alien Skin	564-567
Andromeda.....	568-573
Apple	574-575
Auto FX.....	576-579
Corel	580-581
Express Digital.....	582-585
Extensis	586
iView Multimedia.....	587
Nik Software	588-591
OnOne Software	592-595
PXL Soft.....	596-601
Phase One.....	602
Wacom	603-605

Obtaining information and ordering from B&H is quick and easy. When you call us, just punch in the corresponding Quick Dial number anytime during our welcome message. The Quick Dial code then directs you to the specific professional sales associates in our order department.

 For Section 10, Software,
use Quick Dial #: 64

EYE-ONE COLOR SOLUTIONS



Eye-One Display 2

Designed for the home or small office with multiple workstations, Eye-One Display 2 is the ideal package for getting started with professional monitor color management and profiling. It delivers unparalleled functionality and professional features – at an affordable price. Using the Eye-One 2 colorimeter and the intuitive, step by step software, you can precisely measure all types of displays including LCDs, CRTs and laptops. Eye-One Display 2 offers unrivaled color controls including Workgroup Match, Ambient Check and Match, Push Button Calibration and Validation - all essential tools for pro photographers and designers to attain accurate color throughout the digital workflow, whether in their own studio or in a collaborative production environment.

- ◆ Display-optimized colorimeter for fast, accurate LCD and CRT profiling.
- ◆ Adapt profiles for any ambient light conditions.
- ◆ Unlimited gamma whitepoint and luminance settings including native gamma and measure luminance as a target.
- ◆ Optimized adjustment of hardware controls like brightness and color temperature.
- ◆ Push button calibration for 1-step profiling of industry leading monitors.
- ◆ Highest repeatability for consistent calibration and profiling results.
- ◆ Highest sensitivity in dark areas for better control in shadow detail and more neutral gray scale.
- ◆ Licensed for use at multiple workstations without additional fees.

Eye-One Display 2 (XREOD2)229.95

Eye-One Design & Eye-One Design UV

Affordable, entry level color management solutions, ideal for designers, small creative firms and print shops. They deliver highly accurate color for displays and easily build profiles for RGB and CMYK printers. At the heart of the Eye-One Design system is the Eye-One Pro spectrophotometer. This accelerated device is not only optimized to read twice as fast, but is also outfitted with Teflon pads, creating a smoother gliding action. Together with Eye-One Match software, you simply click, swipe and read color targets almost instantaneously. Reading patches is fluid and effortless— with no pauses or hesitation at the end of rows. Eye-One Design’s “small test chart” technology makes creating profiles for both RGB and CMYK printers a snap, delivering unbelievable color quality to your printer, simply by reading a few rows of color swatches from your printer. The included Eye-One Share software allows you to easily measure and share spot and PANTONE® colors. For color critical work, such as in high-end proofing or photo imaging, simply upgrade your printer module to take advantage of the full test chart capabilities in both RGB and CMYK output. The Eye-One Design UV includes a special spectrophotometer that incorporates a UV filter to prevent problems when measuring pigments that fluorescent under UV light or papers that incorporate artificial whiteners.



- ◆ Calibrate and profile LCD, CRT and laptop monitors; RGB and CMYK printers with “small test chart technology.”
- ◆ USB powered, accelerated Eye-One Pro delivers 2x the speed and improved ease-of-use for concise consistent measurements.
- ◆ Use ambient light measurement for verifying viewing conditions and create monitor profiles for any ambient light condition
- ◆ Easy-to-use, step-by-step software interface – no extra manuals needed
- ◆ Luminance settings for matching multiple monitors to each other
- ◆ Highly sophisticated ruler system enables easy one hand scanning operation
- ◆ Software accommodates all components of Eye-One system, including the new ruler and backup board.
- ◆ Backup board with white surface scans materials up to 3m and folds for easy transport.
- ◆ Measure, mix and share spot colors and custom color palettes with Eye-One Share.
- ◆ Easily upgrade functionality, through software codes that can be purchased online.

Eye-One Design (XREOD).....849.95

Eye-One Design UV (XREODUV)1059.95

EYE-ONE COLOR SOLUTIONS

Eye-One Photo / Eye-One Photo SG

Eye-One Photo delivers to photo professionals a complete, full-scale color management system for the entire digital photographic workflow. Not only does it allow you to create profiles for your monitors and printers, it will let you manage the color profiles for scanners, digital projectors and digital cameras. You can capture both flash and ambient light and easily measure spot colors. Eye-One Photo features professional level color profiling based on ProfileMaker algorithms for your RGB inkjet, dye-sub or photo imaging printers. The popular Mini ColorChecker is included for color evaluation in every shoot. The Eye-Photo SG, which adds Digital Color Checker SG is also available.



Step-up Features

- ◆ Profiling your digital camera environment, including capturing flash and ambient light
- ◆ Profiling your digital projector so your presentations will shine.
- ◆ Profiling your scanner so you can easily convert analog photos to digital art.
- ◆ Capture both flash and ambient light and build CxF files with Eye-One Share software.

Eye-One Photo Includes

- ◆ Eye-One Pro Spectrophotometer with USB cable, LCD and CRT Monitor attachments
- ◆ Ambient light measurement head
- ◆ Ruler and Backup Board; Calibration Plate; Positioning Target; Mini ColorChecker
- ◆ Scanner profiling chart (reflectance)
- ◆ Carry Case
- ◆ Eye-One Match 2.0 Software; Eye-One Share Software (with full Pantone library)
- ◆ \$400 Upgrade Voucher to ProfileMaker Solutions

Eye-One Photo SG includes

- ◆ All components of Eye-One Photo
- ◆ Digital ColorChecker SG



Digital Color Checker

Eye-One Match 2.0 Software for Mac and PC

- ◆ Eye-One Match 2.0 features an easy-to-use interface, redesigned for even greater simplicity with a history section for easy identification of where you are in the process and easy to follow on-screen help guides - no extra manuals needed.
- ◆ The Software can calibrate and profile both CRT and LCD monitors and RGB printers to accommodate the traditional digital photographer's workflow.
- ◆ The "Easy Mode" provides predefined settings and automated processes for users who are new to color management or who don't want to develop customized settings
- ◆ "Advanced Mode" gives experienced users access to customized settings for the best possible results.
- ◆ A "native white point" option leaves the white point of the monitor as is.

Eye-One Photo (XREOP)1399.95

Eye-One Photo SG (XREOPSG).....1589.95

Eye-One Pro

Every Eye-One Pro solution includes an Eye-One Pro spectrophotometer which provides all the same monitor profiling functionality as the Eye-Display products, plus the ability to calibrate and profile so much more. It is an essential tool for those looking to color manage their entire digital workflow – from monitors, to digital cameras, to scanners, to printers to projectors. Plus, with an Eye-One Pro you can measure and capture spot colors and ambient/flash light.



- ◆ Gray balance optimization for more neutral and better defined grays.
- ◆ Highest sensitivity in dark areas for better control in shadow detail.
- ◆ Utilize reference profiles to match all monitors in your workgroup.
- ◆ Unlimited gamma white point and luminance settings including native gamma and measure luminance as target.
- ◆ Push Button Calibration (PBC): One-step profiling for industry leading monitors.
- ◆ Monitor Validation and Trending Graph.
- ◆ Ambient Match: Check ambient light and adapt profiles for different ambient light environments.
- ◆ Profile reminder to ensure reliable color.
- ◆ Before and after images show instant results.

MONITOR CALIBRATION

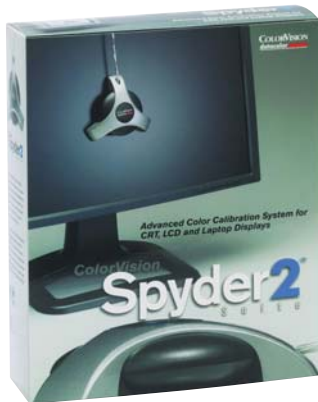
Spyder2Express

ColorVision's Spyder2express delivers quick, easy, and, most importantly, accurate monitor calibration at a price that everyone can afford. It calibrates CRT, LCD, and notebook displays and creates ICC compliant profiles. The Software Wizard guides you through the calibration process in just a few steps, offering digital imaging enthusiasts and graphic users alike the ability to reproduce accurate, reliable and consistent color on their monitors.

- ◆ The Spyder2 colorimeter employs an award winning, sleek, dual-phase hardware design, that offers effortless calibration of all monitors yet it protects even delicate LCDs.
- ◆ A unique Before and After Viewing Feature lets you compare your display with and without calibration.
- ◆ State-of-the-Art Optical Science provides a five-fold increase in color sensitivity over previous technology with a patent-protected light baffle for accurate characterization of LCD displays.
- ◆ Includes Spyder2 Colorimeter; Spyder2express Monitor Calibration Software (Site License); and Adobe® Album Starter Edition (FREE)



spyder2Express
(S2E100)69.95



spyder2SUITE (S2100).....129.95

spyder2SUITE — Digital Darkroom in a Box

The spyder2SUITE from ColorVision provides monitor calibration AND printer profiling for the advanced user — all in one affordable package. The suite includes the iconic Spyder2 colorimeter, with advanced RGB pre-calibration and multiple gamma and temperature options, along with the innovative stand-alone PrintFIX PLUS software, the first software-only printer profiling tool that gives fast and precise results.

- ◆ Easy-to-Use Calibration Wizard with comprehensive help guides you through the entire monitor calibration process.
- ◆ Elegant software design assists you, step by step, through each custom paper profile.
- ◆ The PrintFIX PLUS Wizard assistance checks print quality, optimizes printer media settings, and assures that you use the right settings.
- ◆ Feature-rich tutorials give you the help you need to achieve great prints.

spyder2PRO

spyder2PRO V2.2 packages industry-leading software and hardware for serious photographers and creative professionals to use when displaying images on monitors, in print or in the expanding projector segment. This includes front projector calibration and Ambient PreciseLight features, for digital projection and computer-based home theater. PrintFIX PLUS software is also included for hassle-free printer calibration.

- ◆ The V2.2 Professional Monitor Calibration Software reduces read times on LCD monitors by half.
- ◆ Unlimited choices for Monitor Gamma and Temperature - Absolute control over color.
- ◆ The Ambient PreciseLight function measures ambient light and balances studio lighting and monitor settings accordingly.
- ◆ Custom profile creation allows you to share your profile with all of your displays, including clients.
- ◆ Automated Black and White luminance adjustments provides for the most precise targeting and consistent calibration results.
- ◆ Multiple display type capability lets you calibrate all of your CRT, LCD and laptop displays or projectors.

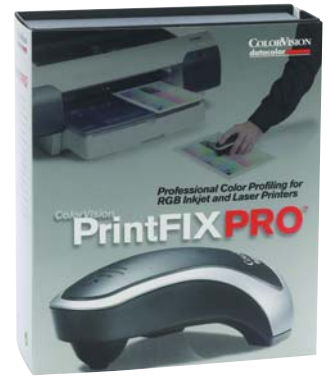


spyder2PRO (S2P100).....199.95

PRINTFIX PRO 2.0

Gallery Quality Prints

PrintFIX PRO is an affordable, and exceptionally friendly spectro precision profiling hardware and software package that allows you to create your own custom profiles for any combination of printer, paper and ink. PrintFIX PRO makes creating a printer profile easy — simply measure a single test print in color or augment that with an extended grays target for black and white, measure with the included Datacolor 1005 Spectrocolorimeter, then let PrintFIX PRO software create a custom ICC profile in just a few minutes. PrintFIX PRO is designed for use with inkjet, dye-sub, thermal, chemical and laser printers. Spectro technology enables support of a wide range of media, especially third party fine art papers, third party inks, and an unlimited range of RGB-driven printers.



- ◆ The Datacolor Spectrocolorimeter 1005 is designed for proper hand placement and easy measurement of targets. It conveniently connects to your computer via USB. All new LED optics and electronic components support faster and more accurate measurements allowing you to create new profiles in less than five minutes with standard targets.
- ◆ The standalone PrintFIX PRO application uses a friendly wizard, with clear directions and controls, to walk you through each phase of the profiling process.
- ◆ Support for high resolution 16-bit profiles allows you to faithfully reproduce even the most subtle elements of your work.
- ◆ To help optimize your prints, the unique Ambient PreciseLight viewing controls allow you preview and adjust to different ambient lighting and profile settings.
- ◆ Print, preview and compare up to four different variations in separate quadrants of a single sheet of paper.
- ◆ PrintFIX PRO helps you verify the correct operation of your printer by checking for clogged or empty ink channels or other colorant problems. A similar function helps you determine the correct media setting to choose from your printer driver.

PrintFIX PRO (COPFP).....499.95

PANTONE COLORIMETER MONITOR PROFILE SOLUTIONS

huey (MEU101): A basic hardware/software package for calibrating and profiling LCD and CRT monitors, huey is ideal for the photo hobbyist, and is distinctly different from pro calibration tools, as it requires only a basic understanding of color management to operate. In less than five minutes, it can calibrate and adjust your monitor based on their primary viewing activity – viewing photos, creating graphics or browsing the web. Plus, it is the only device that continually adapts a monitor for changing room lighting. Includes a huey measurement device (emission only colorimeter) with ambient measurement capabilities, and software for monitor calibration**79.95**

hueyPRO (MEU113): Designed for those looking for greater color control and consistency when working between multiple monitors. The size of a marker pen, hueyPRO retains the innovative form of the original huey, while offering advanced color correction functionality. It delivers professional results without requiring expertise in color management, and has the ability to continually adjust the monitor as room lighting changes. Offers increased control over brightness and contrast through separate menu choices that allow you to select gamma and white point settings. Help function offers hints and workflow suggestions for improving color output.....**109.95**

Eye-One Display LT (MEU102): Designed for creative professionals just getting started with color management. You can select between 1.8 or 2.2 gamma settings, have ambient light measurement functionality and the push-button calibration feature. Eye-One Display LT shows target color temperature and luminance, and stores all the information in a profile – ideal for post-profile analysis. It can also calibrate multiple monitors connected to a single workstation. Can be easily upgraded to the capabilities of the Eye-One Display 2 as your needs expand**149.95**



PHOTOSHOP CS3

*The World-Standard Image Editing Program*

Accelerate your path from imagination to imagery. Ideal for photographers, graphic designers, and web designers, the professional standard delivers new features such as automatic layer alignment and blending that enable advanced compositing. Live filters boost the comprehensive, nondestructive editing toolset for increased flexibility. And a streamlined interface and new timesaving tools make your work flow faster. Take advantage of a wide range of improvements designed to boost productivity. Experience native performance on Intel-based and PowerPC Macs and on Windows XP and Windows Vista systems. Maximize your workspace with a streamlined interface, process raw images with increased speed and quality, and manage assets more efficiently in the revamped Adobe Bridge CS3. And enjoy complete compatibility with Photoshop Lightroom software, so the changes you make to an image in one product will automatically appear in the other.

The comprehensive image-editing toolset in Photoshop CS3 lets you correct and enhance your images with unmatched creative control. Experiment more freely with nondestructive filters. Manage and correct color more easily, and convert color images to rich black-and-white with one click. Retouch images with more powerful cloning and healing tools. And count on higher fidelity conversion when you merge a series of exposures into a 32-bit high dynamic range (HDR) image. Photoshop CS3 offers a wealth of features that make compositing multiple images easier than ever before. Create more accurate composites with new tools that automatically align and blend layers or images based on similar content. Make an image selection with one brush stroke. Perfect any selection edge in an easy-to-use, intuitive dialog box. And merge multiple photos into a panorama with superior results.

FEATURES

Streamlined Workflow

- ◆ Process raw images with increased speed and superior conversion quality using the Photoshop Camera Raw plug-in, which now adds support for JPEG and TIFF formats; new tools including Fill Light and Dust Busting; compatibility with Adobe Photoshop Lightroom software; and support for over 150 camera models.
- ◆ Work more easily with Adobe PDF-based content. Precisely control the size of PDF pages opened in Photoshop; add security controls and metadata, such as copyright and exposure details, to images within PDF presentations; and create a richer image display in PDF presentations and documents.
- ◆ Experience better control over print quality with color management, a larger print preview window, and more controls in one place so you can print in fewer steps. Improved printing controls, co-developed by Adobe and HP, make printing easier and more predictable, and streamline setup options via integration with select printers from HP, Epson, and Canon.
- ◆ Jump from Photoshop Lightroom software to Photoshop CS3 in one click for advanced editing of your digital photos. Lightroom (sold separately) offers an efficient, powerful way to import, manage, and present large volumes of digital images.
- ◆ Undo and redo any set of editing steps in an open image with the History palette, and automatically track all editing steps within your files with the Edit History log. Export steps to a text file or save them as part of image metadata for easier documentation of your work, file audits, and more.
- ◆ Make sophisticated color adjustments automatically with one-click presets in Curves, the Channel Mixer, and the new Black and White conversion dialog box.
- ◆ Take advantage of Adobe Flash and Zoomify technology to export high-resolution images to the web for viewing through Adobe Flash Player software. Flash Player displays your image quickly and efficiently, letting viewers zoom in on details with minimal delay.
- ◆ Automate common production tasks in a variety of ways. Set up event-based scripts, record a series of steps as an Action for efficient batch processing, and design repetitive graphics faster with Variables.
- ◆ Import and export a wide range of file formats, including PSD, BMP, Cineon, JPEG, JPEG2000, OpenEXR, PNG, Targa, and TIFF.
- ◆ Create compelling mobile content, such as wallpapers and screensavers, and then visually preview how it will render on mobile devices using the built-in Adobe Device Central CS3. Tune your designs for mobile screen sizes and lighting conditions.
- ◆ Take advantage of a wealth of additional resources—including software plug-ins, books, and training—from the longstanding community of expert Photoshop developers, authors, and trainers.
- ◆ Experience native performance on Intel and PowerPC-based Macintosh computers, and on Windows XP and Vista systems.

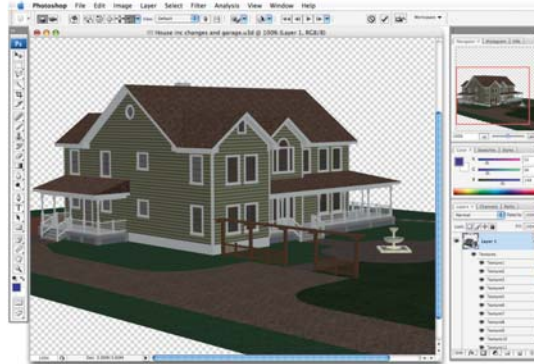
Photoshop CS3: For Macintosh (ADPSCS3M) and Windows (ADPSCS3W)**648.95**

Photoshop CS2 to CS3 Upgrade: For Macintosh (ADUPSCS3M) and Windows (ADUPSCS3W)....**198.95**

PHOTOSHOP CS3

Unrivaled Editing Power

- ◆ Add, adjust, and remove filters from an image without having to resave the image or start over to preserve quality. Nondestructive Smart Filters allow you to visualize changes without altering original pixel data.
- ◆ Perform non-destructive scaling, rotating, and warping of raster and vector graphics with Smart Objects. Even preserve the editability of vector data from Adobe Illustrator software.
- ◆ Take advantage of precision color correction made faster and easier. Brightness/ Contrast now provides better results from the same intuitive interface, and enhanced Curves controls let you make automatic adjustments with included presets or those you create; convert to black-and-white with point sliders; and use a histogram, color channel lines, and a clipping preview.
- ◆ Easily convert color images to rich black-and-white and adjust tonal values and tints with a new tool. Experiment with the included black-and-white presets, or create and save your own custom presets to achieve the best results.
- ◆ Take advantage of new functionality and a host of presets that make the Channel Mixer easier to use for B&W conversion.
- ◆ Create and edit 32-bit images and combine multiple exposures into a single, 32-bit image that preserves the full range of a scene—from the deepest shadows to the brightest highlights. New image processing and alignment algorithms deliver superior results.
- ◆ Experience greater control when retouching images with cloning tools and the Healing Brush. See source pixels under your tool or brush for more precise positioning; preview changes to source content live; and set multiple source points, scale, and rotate in the new Clone Source palette.
- ◆ Create or modify images with a wide assortment of professional, fully customizable paint settings, artistic brushes, and drawing tools.
- ◆ Take perspective-based editing to a new level with the enhanced Vanishing Point, which lets you create multiple planes in an image, connect them at any angle, and then wrap graphics, text, and images around them to create packaging mock-ups and more.

Efficient and Flexible Work Environment

The professional standard now comes in two versions—Photoshop CS3, and Photoshop CS3 Extended with additional features and enhancements.

- ◆ Maximize screen space for editing while keeping essential tools accessible. Palettes are now arranged in convenient, self-adjusting docks that can be widened to full size or narrowed to icons or even a thin, self-revealing strip at the edge of your monitor.
- ◆ Organize and manage images more efficiently with Adobe Bridge CS3 software, which now delivers improved performance, a Filter panel for easier searching, the ability to group multiple images under a single thumbnail, the Loupe tool, offline image browsing, and more.
- ◆ Set up and save custom menus, keyboard shortcuts, and workspaces for quick access to what you need.

Composite with Breakthrough Tools

- ◆ Create more accurate composites by automatically aligning multiple Photoshop layers or images based on similar content. The Auto-align Layers command quickly analyzes details and moves, rotates, or warps layers to align them perfectly, and the Auto-blend Layers command blends the color and shading to create a smooth, editable result.
- ◆ Take advantage of refined Photomerge technology, which uses new layer-alignment and layer-blending capabilities to let you automatically stitch horizontal or vertical photos into seamless panoramas.
- ◆ Make selections in a snap. Loosely draw on an image area, and the Quick Selection tool automatically completes the selection for you. Then fine-tune your selections with the Refine Edge tool.
- ◆ Composite images, text, and effects on hundreds of layers for extraordinarily sophisticated results. Organize layers with up to five levels of nesting, and save in different combinations as Layer Comps.

PHOTOSHOP CS3 EXTENDED**Discover new dimensions
in digital imaging**

Ideal for film, video, and multimedia professionals and graphic and web designers using 3D and motion, as well as professionals in engineering and science, Adobe Photoshop CS3 Extended software delivers everything in Photoshop CS3 and more. Render and incorporate 3D images into your 2D composites. Stop time with easy editing of motion graphics on video layers. And probe your images with measurement, analysis, and visualization tools. For all that is the professional standard in digital imaging and more, choose Photoshop CS3 Extended.

Photoshop CS3 Extended: For Macintosh (ADPSECS3M) and Windows (ADPSECS3W).....**998.95**

CREATIVE SUITE 3 DESIGN

Standard Edition

Take a massive step forward in the way you work. Explore new feature-rich versions of the tools you rely on for page layout, image editing, illustration, and PDF workflow. Experience a highly productive creative toolkit with Adobe InDesign CS3 for professional page layout, Adobe Photoshop CS3 for unrivaled image editing, Adobe Illustrator CS3 for inspired vector graphics creation, and Adobe Acrobat 8 Professional for efficient Adobe PDF workflows. Then expand your creative capabilities with newly integrated tools for designing websites, rich interactive experiences and dynamic mobile content.

- ◆ Enjoy a consistent design experience across InDesign, Illustrator, and Photoshop with shared interface elements such as self-adjusting panels that dock out of your way when not in use.
- ◆ Explore more creative possibilities and experience new levels of productivity using InDesign CS3, which offers powerful features for creating graphically rich, complex documents; professional typographic controls; and robust, reliable printing.
- ◆ Print Photoshop composites, Illustrator artwork, and InDesign layouts with confidence thanks to robust color options, consistent color settings, and professional output controls for high-quality printing.
- ◆ Open Photoshop images in Illustrator and Illustrator artwork in Photoshop, and place both types of native files, as well as Adobe PDF files, in InDesign layouts. Streamline your design and production processes in myriad ways using native file format support.
- ◆ Hand off Photoshop image comps for use in web prototyping, preview Illustrator artwork as it might appear on a mobile device, and export InDesign layouts as XHTML for use in web page layouts.
- ◆ Use Adobe PDF to create reliable and consistent final output, streamline print production — including automatically fixing mistakes found during preflight — and automate processes using JDF.
- ◆ Organize, browse, locate, and preview assets with Adobe Bridge CS3, which offers fast performance; customizable workspaces; and non-destructive batch-editing of TIFF, JPEG, and RAW files.
- ◆ Includes Adobe Stock Photos for purchasing royalty-free images; Acrobat Connect for hosting web-based, interactive meetings; and Version Cue CS3 for workgroup file management.

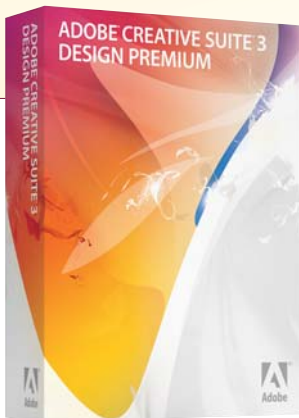
Design Standard CS3

For Macintosh (ADCS3DSWBW) and Windows (ADCS3DSWBW).....1198.95



All Creative Suite 3 Design and Web editions include:

- Adobe Bridge CS3 • Adobe Version Cue CS3 • Adobe Device Central CS3 • Adobe Stock Photos
- Adobe Acrobat Connect • Adobe Dynamic Link • Adobe OnLocation CS3 • Adobe Ultra CS3



Premium Edition

Adobe Creative Suite 3 Design Premium software is the designer's dream toolkit for print, web, and mobile publishing. It combines all-new versions of essential tools for professional page layout, image editing, illustration, and Adobe PDF workflows with new tools for designing engaging websites, interactive experiences, and mobile content. Design Premium offers a productive, intuitive, and tightly integrated environment with everything you need to design content for tomorrow as well as today.

- ◆ Creative Suite 3 Premium Edition includes Photoshop CS3 Extended, Illustrator CS3, InDesign CS3, Acrobat 8 Professional, Flash CS3 Professional and Dreamweaver CS3. Also included are the components common to CS3 applications. The include Bridge CS3, Version Cue CS3, Device Central CS3, Stock Photos, and Acrobat Connect.

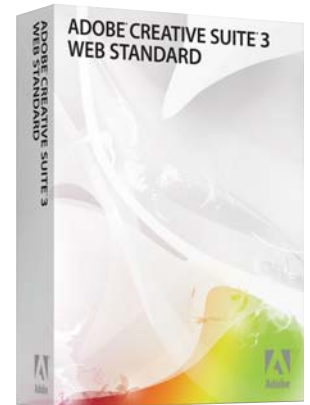
Design Premium CS3: For Macintosh (ADCS3DPWBW) and Windows (ADCS3DPWBW).....1798.95

	Premium	Standard
Adobe InDesign CS3	Yes	Yes
Adobe Photoshop CS3 Extended	Yes	No
Adobe Photoshop CS3	No	Yes
Adobe Illustrator CS3	Yes	Yes
Adobe Flash CS3 Professional	Yes	No
Adobe Dreamweaver CS3	Yes	No
Adobe Acrobat 8 Professional	Yes	Yes

CREATIVE SUITE 3 WEB

Standard Edition

Get all the tools to prototype, design, develop, and maintain websites, applications, interactive experiences, and mobile content. Enjoy new features and integration across Adobe Dreamweaver CS3, Flash CS3 Professional, Fireworks CS3, and Contribute CS3. Leverage integrated workflows that enable fast, efficient exchange of assets so you move from design to delivery efficiently. Roundtrip editing between Fireworks, Flash, and Dreamweaver enables speedy prototyping, graphics creation, and optimization. Import files from other Adobe creative tools. Whether you're updating a website to support the latest standards and technologies, integrating interactive video, migrating to CSS-based designs, or experimenting with mobile content development, Creative Suite 3 Web Standard software lets you get it done today yet scales to support new web or device projects in the future.



- ◆ Discover the powerful, expressive Flash authoring environment. Add life to graphics with acclaimed animation tools, high-quality text rendering, filters and other effects, and the popular FLV tools, complete with alpha channel support and batch rendering.
- ◆ Keep pace with evolving technologies and standards. Design with CSS and XML; integrate with development environments such as HTML, XHTML, XML, Adobe ColdFusion, ASP, ASP.NET, JSP, or PHP; test content across myriad browsers and operating systems; and prepare for the new Internet Protocol version 6 (IPv6).
- ◆ Go farther with ActionScript 3.0, the high-performance, object-oriented programming language for Adobe Flash Player. Explore a new world of customization using the rich language, API and libraries.
- ◆ Free yourself from simple web edits. With Contribute CS3, enable individuals or workgroups to easily edit and publish content to websites and blogs from a controlled, permissions-based application or from within Microsoft applications.
- ◆ Create consistent CSS-based designs with the CSS layout and visualization tools in Dreamweaver. Drag and drop an XML feed onto a web page. Use the industry's first integrated tool for Section 508 and WCAG Priority 2 checkpoints.
- ◆ Use Adobe Device Central CS3 to design, develop, preview, and test content for a wide range of mobile and consumer devices. Easily showcase your work in numerous mobile device skins through built-in and regularly updated device profiles.



Web Standard CS3 Software Suite

For Macintosh (ADCS3SWBM)**998.95**
For Windows (ADCS3SWBW)**998.95**

Web Premium CS3 Software Suite

For Macintosh (ADCS3PWBM)**1598.95**
For Windows (ADCS3PWBW)**1598.95**

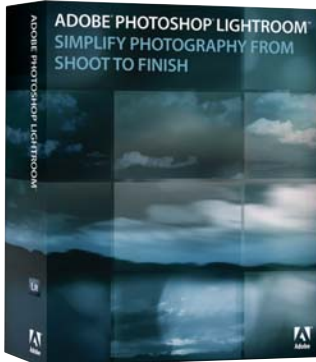
Premium Edition

Finally, all your favorite tools are in one solution. Design core assets and build your prototype with Photoshop CS3 Extended, Illustrator CS3, and Adobe Fireworks CS3 software. Then bring your project to life with Dreamweaver CS3 and Adobe Flash CS3 Professional, the industry-leading web design and development tools. Use Adobe Acrobat 8 Professional software to quickly share design ideas and collect feedback from colleagues and clients, and easily maintain the final project with Adobe Contribute CS3.

- ◆ Return to your creative roots with intelligent integration that lets you forget the tools and focus on the project. Import files directly from Illustrator CS3 to Flash CS3, or cut and paste files from Photoshop CS3 into Dreamweaver CS3. Take advantage of improved CSS workflow between Dreamweaver and Fireworks and improved rendering compatibility between Dreamweaver and Contribute. Organize your assets with Adobe Bridge CS3, and coordinate your team with Adobe Version Cue CS3.

	Premium	Standard
Adobe Dreamweaver CS3	Yes	Yes
Adobe Flash CS3 Professional	Yes	Yes
Adobe Photoshop CS3 Extended	Yes	No
Adobe Illustrator CS3	Yes	No
Adobe Fireworks CS3	Yes	Yes
Adobe Acrobat 8 Professional	Yes	No
Adobe Contribute CS3	Yes	Yes

PHOTOSHOP LIGHTROOM



Item # ADPSL

Essential Toolbox for Today's Digital Photographer

Adobe Photoshop Lightroom software is the professional photographer's essential toolbox, providing one easy application for importing, managing, adjusting, and presenting large volumes of digital photographs so you can spend less time in front of the computer and more time behind the lens. Enjoy robust support for more than 150 camera raw formats, and experiment with confidence. Adjustments you make to images in Lightroom won't alter the original data, whether you're working on a JPEG, TIFF, DNG, or camera raw file. Ease the learning curve and be productive quickly. Task-oriented modules whisk you through typical workflow tasks by putting just the tools you need at your fingertips. Fine-tune your photographs with precise, easy-to-use tools for globally correcting white balance, exposure, tone curves, lens distortion, and color casts.

FEATURES

Import

- ◆ Speedily process high-volume shoots by automatically importing images whenever media cards or cameras are connected to your computer. Then automatically rename files, organize folders, and make nondestructive adjustments as images are imported.
- ◆ Streamline the importing and exporting of your files by saving your frequently used settings in stored presets, which you can recall and apply when needed.
- ◆ If desired, automatically convert your images from proprietary file formats to the publicly available Digital Negative (DNG) format as they are imported, or easily export photographs from your Library in DNG format.

Manage

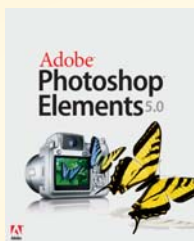
- ◆ Quickly find and select your best shots with flexible display options like the Grid view for groups of thumbnails, the Loupe view for zeroing in on fine detail in a single image, or the Compare view for displaying two or more images side by side.
- ◆ Bring order to voluminous image libraries by grouping your photographs in stored collections. Create collections for different tasks or subjects, and group similar images within a collection to organize them further.
- ◆ Put your images in the order that you need them for any particular task by selecting any number of photographs in your Library — continuous or not — and then simply dragging them to a new location on the Grid.

Develop

- ◆ Quickly perfect white balance, exposure, and tone curves in your images, including camera raw files, with slider controls, or enter numeric values for precise adjustments.
- ◆ Precisely control the tonality and contrast of images by individually targeting highlights, midtones, and shadows.
- ◆ Instantly send any number of images to Photoshop for advanced editing, and see the changes you've made reflected in the Lightroom Library when you're done.
- ◆ Enhance color saturation and remove color casts with control over six color ranges each for hue, saturation, and luminance.
- ◆ Check sharpness, noise, or small details with nearly instant zooming — a simple keyboard command or mouse click toggles between 100% magnification and a full-image view.
- ◆ View a side-by-side display of your original picture and a duplicate that shows the effects of edits as you make them, or display the before and after in a split view of the image.
- ◆ Convert color images to B&W with precision. Control the contrast and detail based on the colors in the original photograph.
- ◆ Erase dust spots from an image with a single click. Crop and straighten photos in a snap. Quickly eliminate red eye when it occurs.

Present

- ◆ Quickly and visually format high-quality prints, whether working with one photo or 100, on one page or many. Recall your favorite layouts with saved presets.
- ◆ Create HTML or Adobe Flash based web galleries for online presentation with little effort and no programming.
- ◆ Use the simple controls in Lightroom to create and play elegant slide shows, and include background music from your digital music library, including iTunes.
- ◆ Stamp your slide shows, web galleries, and printed output with your studio or business logo for an added professional touch.



Photoshop Elements

Photoshop Elements software combines power and simplicity to help you do it all. Edit and enhance photos by instantly fixing common flaws or using advanced options for more control. Fix photos with intelligent tools that automatically correct skin tone, lighting, color, and contrast. Remove red eye automatically as you download photos.

Photoshop Elements 4.0 for Mac (ADPE4M).....85.95

Photoshop Elements 5.0 for Windows (ADPE5W).....99.95

ACDSee 9

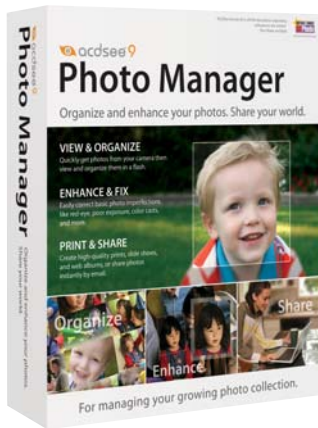


Photo Manager

No matter what kind of photos you take, you need software that organizes them AND allows you to view, fix, and share them. Get photos fast from any storage device, and ACDSee 9 automatically categorizes your shots based on metadata information (e.g., keywords, size, date taken). You don't even have to lift a finger. You can also use password protected Private Folders to store confidential information.

Get an array of rapid full-screen quick viewing tools, time-saving Print Layouts that make your home printing easier and less confusing, as well as powerful email options, slide shows, CD/DVD burning, and web album tools that make sharing your photos as easy as can be. Enhance photos

with red-eye removal, color cast removal, exposure adjustments, and the Photo Repair tool. Batch rename, crop and resize lots of photos at once, then quickly drop them into folder systems, ratings, or custom categories. Instantly fix photos that are too dark or too bright with the Shadow/Highlight tool.



FEATURES

View and Organize

- ◆ Whether opening an image attachment to an e-mail, or double-clicking on a JPEG from Explorer, see your photos instantly onscreen with the Quick View mode.
- ◆ Lock up your special photos with Private folders where only you can view them. If you have photos or files that you want to remain confidential, just move them to a Private Folder, set a password, and they will stay under lock and key.
- ◆ Auto Categories organizes your photos for you. When Getting photos from your camera or storage device, ACDSee Photo Manager automatically puts your photos into convenient categories based on EXIF camera information, IPTC data, ACD database information, and file properties.
- ◆ Calendar Events View automatically organizes photos based on the date taken. That means photos are displayed in an organized event list, which you can personalize with a description for each event, like "AutoShow" or "My Summer Fishing Trip".
- ◆ You can even add thumbnails to dates in your Events View for convenient viewing and browsing of future and past events. This gives you a range of options to search your photos from later on – all without having to rename or sort a single photo on your own. Your shots are automatically sorted from the start, which means less work for you.

Enhance and Fix

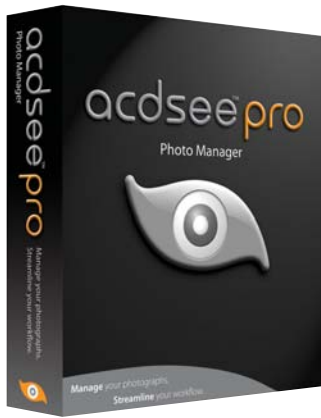
- ◆ Easier photo fixes with the improved one-click red-eye reduction. You don't even have to click directly on the problem area in order to fix it. Just single-click in the vicinity of the reddened portion of the subject's eye and ACDSee automatically fixes it. Presto!
- ◆ Save photos that you would've previously deleted. The Shadow/Highlight tool provides stunningly easy and instantaneous photo correction for poorly exposed photos (photos that are too dark or too bright), without affecting areas of the image that don't require adjustments. The tool appears in ACDSee's Edit Mode for easy access.
- ◆ ACDSee Showroom brings your photo memories right onto the desktop. Set a folder path to your favorite shots, then sit back and watch. A sleek movable widget appears that displays your photos in sequence.

Print and Share

- ◆ Group By provides you with a powerful new way to organize your photos. Group By makes it easier for you to view your photos faster and more efficiently by arranging your photos into subsets – allowing you to sort and view your photos in more detailed groupings. You can Group By keywords, size, when the photos were taken, and other commonly used information.
- ◆ With Showroom, photos no longer have to stay buried away in the recesses of your hard drive. Showroom lets you showcase your collection and enjoy it whenever you're working off the desktop.
- ◆ Quickly navigate and display photos with Table of Contents.
- ◆ Print Layout reduces the complexity and confusion of printing multiple photos. It gives you a variety of print layout options with helpful wizards that make it easier than ever to print your photos from home. Print multiple 4x6" prints on a single page, or fill an entire page for an 8x10".
- ◆ Organize on the fly with Group By.
- ◆ Sort photos like a pro with Filter By.
- ◆ Filter By gives you improved sorting and display capabilities, making it easier to show photos that are assigned to particular ratings or categories. Filter By is quick and easy to use – for example just Select Filter By Rating 1 and only photos in the selected folder(s) assigned to Rating 1 will be displayed.

ACDSee 9.0 Photo Manager Software (ACACDPM9): For Windows49.95

ACDSee PRO PHOTO MANAGER



Total Workflow Control

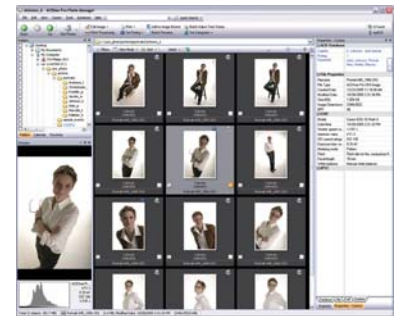
Get unparalleled speed in every facet of your digital photography workflow - from photo capture to final print with ACDSee Pro Photo Manager software. View, process, edit, organize, catalog, publish, and archive your photo collections with precision and control demanded by photographers around the globe. You'll get full RAW support and RAW processing, powerful organizing tools including customizable folders and categories, quick editing features, visual tagging and full color management support for ICC and ICM profiles to meet all of your professional needs.

Quick and easy to learn. There's no steep learning curve, so you'll be whizzing through its features in no time.

You'll also appreciate its intuitive and customizable user

interface that doesn't slow you down with cluttered menus or poorly positioned toolbars.

View your photographs at full size with uncompromised speed and resolution, browse thumbnails quickly and easily, and process large files with unrivaled speed. If you're looking for an end-to-end digital photo software solution for all your photography workflow needs—ACDSee Pro Photo Manager software is the answer.



FEATURES

View

- ◆ Support for more than 100 formats including JPG, BMP, GIF, JPEG2000, DE, PSD, DNG and TIFF. View 10MB files with high resolution and uncompromised speed.
- ◆ Extensive support for RAW formats from Nikon, Canon, Olympus, Fuji, Leica, Sony Panasonic, Konica-Minolta, Pentax and Phase One cameras. Also offers integrated support for Adobe's Digital Negative (DNG) RAW format.
- ◆ Support for archive formats including AZIP, CAB, ARG, GZ, LHA, RAR, TAR, TGZ and UU.
- ◆ Support for over 30 multimedia formats including AVI, MOV, MP3, MPEG, MPG, SWA, SWE, WAV and WMV.
- ◆ Lightning-fast RAW image previews.
- ◆ Powerful RAW processing that gives you full control over your images with precision tools for adjusting white balance, exposure, sharpness, and noise.
- ◆ Magnifying glass for detailed viewing.
- ◆ Sort based on EXIF camera metadata and IPTC information.
- ◆ Histogram preview.

Edit

- ◆ Quickly retouch photos with professional accuracy or access Photoshop directly from within Pro Photo Manager.
- ◆ Tonal adjustments with levels, curves, shadows/highlights and auto settings.
- ◆ Shadow/Highlight tool lets you brighten only the dark areas of a photo, or darken only overexposed areas, or do both simultaneously. Heal and tone tools.
- ◆ Offers quick editing features that allow you to easily fix common lens distortions such as perspective, barrel, pin cushion, and fish-eye.
- ◆ Color cast adjustment, red-eye reduction, noise removal, and sharpening with unsharp mask.
- ◆ Apply over 40 filters including vignette, sepia, oil paint and more.
- ◆ Add a watermark to your photographs with graphics or text to reflect copyright and ownership laws, or to overlay business-related information on specific photographs.
- ◆ Batch editing of thousands of photographs at once using multiple functions.
- ◆ Fully integrated IPTC support for interoperability with PhotoShop Captions.

Organize

- ◆ Quickly sort and select preferred photographs from a shoot using one-click visual photo tagging.
- ◆ Hierarchical categories using drag and drop functionality.
- ◆ Database fields include author, notes, date, caption and keywords.
- ◆ Keyword pick lists.
- ◆ Assign 1-5 rating.
- ◆ EXIF and IPTC support.
- ◆ Batch set information (Database, EXIF, IPTC).

Process

- ◆ Non-destructive processing of RAW files to adjust white balance, exposure, sharpness and noise.
- ◆ Convert files to over 14 different formats.
- ◆ Auto rotate photos.
- ◆ Adjust time stamp of multiple cameras.
- ◆ Batch processing— apply adjustments simultaneously to multiple photos, including rotate, crop, resize, color cast, adjust exposure, watermark, text overlay, noise removal, sharpening vignette, and convert formats.

ACDSee PRO PHOTO MANAGER

Publish

- ◆ Full color management support for ICC and ICM color profiles ensure photos look and print the way you shoot.
- ◆ Customize your own web gallery or slide show to showcase to clients. Slideshows can include audio in multiple output formats (EXE, AVI, SWF).
- ◆ VCD slideshows for replay on DVD player.
- ◆ PDF creation.
- ◆ E-mail with auto resizing of photos.
- ◆ Print high quality contact sheets.

Archive

- ◆ Burn to DC or DVD.
- ◆ Sync tool for automated back-up to another hard drive.

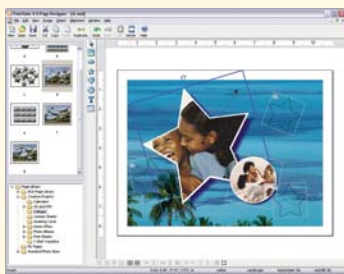
More Smart Tools

- ◆ Compare up to four images at once. Analyze the histogram, metadata and exposure levels to choose and tag your best.
- ◆ Run a magnifying glass over specific areas to examine your images with greater precision.
- ◆ Customizable Browser layouts, short-cut keys, and metadata allow you to meet your personalized requirements and streamline your workflow.
- ◆ Save and re-load custom workspace layouts.
- ◆ Includes HTML album templates designed to suit your professional needs. Customize them by adding your contact information, company logo, or a look and feel appropriate for your business.
- ◆ Includes complete User Guide and tutorials that make sure you hit the ground running.

	ACDSee 9 Photo Manager	ACDSee PRO Photo Manager
Support for over 100 formats including image, audio, video & RAW files	✓	✓
Scroll through photos quickly using a thumbnail view or full screen	✓	✓
Compare up to 4 photos at once	✓	
Group By display including Table of Contents	✓	
Catalog photos using keywords, notes, and categories	✓	✓
Find photos quickly using the Quick Search bar and Calendar views	✓	✓
Private folders to keep confidential photos secure	✓	
Automatic Categories using photo properties	✓	
Visual photo tagging to sort hundreds of photos		✓
Customizable shortcut keys & workspace layouts to match your workflow		✓
Remove red eye, heal blemishes, and quickly retouch photos	✓	✓
Apply creative filters including sepia, oil paint and more	✓	✓
Lens correction tools		✓
Batch Edit including watermarking and copyright text overlay		✓
Shadow/highlight adjustments	✓	✓
Batch rename, resize and rotate	✓	✓
Non-destructive RAW processing		✓
Batch set IPTC metadata		✓
Color management support for ICC profiles		✓
Save your photos as PDF files and PDF slide shows	✓	✓
Print contact sheets & multi-up layouts	✓	✓
Create slide shows with audio for sharing via email or on your DVD player	✓	✓
Create HTML Web photo galleries	✓	✓
Showroom desktop photo gallery	✓	
Burn to CD and DVD	✓	✓
Automatically sync drives	✓	✓

ACDSee 9.0 Photo Manager Software (ACACDPM9): For Windows49.95

ACDSee Pro Photo Manager Software (ACACDPPM): For Windows.....129.95



FOTOSLATE 4 Photo Print Studio

Perfect for home users and digital enthusiasts, FotoSlate 4 is easy-to-use software that lets you print your digital photos quickly and creatively. Packed with a host of customizable templates, FotoSlate 4 prints to a variety of popular paper sizes including 4x6" and 5x7". You can make print sheets, albums, calendars, and greeting cards, simple brochures and scrapbooks, and contact sheets using your photos. You can also make CD and DVD covers, and even T-shirt transfers. Handy wizards help reduce your workload and streamline the workflow. Create customized calendars with special holidays included, contact sheets with handy thumbnail previews of your photos, and greeting cards with illustrated borders. Catalog a picture photo shoot into contact sheets in no time. Alter page templates with your

own design ideas, or create your own page from scratch to maximize creative output. (ACFSPP)29.95

BLOW UP



A plug-in for Adobe Photoshop and Photoshop Elements, Alien Skin's Blow Up offers the highest quality image image enlargement available, better than bicubic interpolation and any other third party solution. Designed for both photographers and graphic artists, Blow Up simplifies and improves image enlargement, making it easy to convert web graphics to print and create large format and gallery prints from digital snapshots.

Blow Up makes advanced image scaling easy, preserves smooth, crisp edges and lines, and creates four times (1600% area) enlargements from any image without jagged artifacts or halos. In some cases, Blow Up can enlarge up to six times (3600% area) without obvious artifacts— such as stairstep, halo, or fringe artifacts. Blow Up includes advanced features such as photo grain controls, enlargement-specific sharpening, and support for most image modes, including CMYK. Blow Up also supports 16- and 32-bit images and is optimized for multi-core and multi-processor systems.

- ◆ In addition to superior image quality, Blow Up offers several distinguishing features. It supports CMYK, RGB, Lab, Grayscale, and Duotone image modes. Blow Up resizes multi-layered documents — no flattening necessary — and works with 8-, 16- and 32-bit compositions, including RAW and HDR images.

- ◆ Blow-Up can resize an image in a new document, leaving the original untouched. Lastly, taking advantage of multiprocessor, multi-core, and Hyper-threading technology, Blow Up offers greatly improved performance on modern CPUs.

Blow Up (ALBU): For Macintosh and Windows199.95



SNAP ART

A plug-in for Photoshop CS, Photoshop Elements 4, or Corel Paint Shop, Snap Art creates beautiful, natural media artwork in a single step. It allows artists, photographers, and designers to give a hand-crafted look to any digital image. Render images in an unlimited variety of real-world art styles including oil paint, pencil sketch, pen and ink, comics, and more. Great for stylizing photos or graphics, it works without laborious hand editing and is more versatile than Actions or brushes.

Conventional artists often use an underdrawing to outline key objects within a composition, which serves as a guide and is usually painted or drawn over in the final composition. Similarly, Snap Art uses edge detection to discern the objects, edges, lines, and shapes of an original image. An advanced paint engine then strokes and fills this outline using the brushes and colors you specify. This allows realistic reproduction of detail, but balances that realism with convincing artistry. Loaded with hundreds of settings, Snap Art distills this complicated process down to a single step. Simply find the factory setting that works for your image. And for the advanced user, detailed controls are available to fine tune a composition for the desired effect.



- ◆ Convincing line drawings, both pen and pencil, are possible in minutes. These can be combined with shading and crosshatching for a more realistic image.
- ◆ Popular painting techniques are quick and easy. Digital artists can render a still life with pointillism as a Neo-impressionist might. Craft a rough and rocky landscape in dry brushed watercolor or thickly textured impasto.
- ◆ Snap Art also emulates traditional drawing effects such as colored pencils, charcoal for softer shading, and hard, soft and oil pastels.

- ◆ Includes hundreds of presets that make artwork with a single click. An intelligent stroke engine, based on edge detection, renders brush, pen and pencil strokes that follow the original image. This balances realistic reproduction of detail with convincing artistry.
- ◆ It features a variety of brushes, pencils, pastels, and pens, as well as an assortment of canvas and paper types. Snap Art works with 16-bit images and is scriptable with Photoshop actions. Context-sensitive help and an online manual keep things easy to understand.

Snap Art (ALSA): For Macintosh and Windows149.95

ALIEN SKIN

EXPOSURE



A plug-in for Photoshop, Exposure brings the look and feel of film to digital photography. Simulate the warmth and softness of real world film, both color and black and white. Reproduce realistic film grain, and simplify your digital photography workflow. Digitally simulate the vivid colors of Velvia, the rich blacks of Kodachrome, the sensitivity of Ektachrome, and the characteristics of dozens of other film stocks. Exposure also models the size, shape, and color of real world film grain. Use this level of subtle reproduction to simulate the distinct looks of films such as Ilford 3200 Delta and long discontinued Ektachrome EES and GAF 500. Exposure simplifies your workflow, collecting color, dynamic range, softness, and grain controls in one plug-in. Correct a colorcast, soften a digital portrait, and tweak contrast with one, easy-to-use tool. Or define your signature look and save it as a one-click effect.



- ◆ Exposure is a film simulator based on the detailed analysis of real world film stocks. Quickly evoke the vivid colors of Velvia, the rich blacks of Kodachrome, or the sensitivity of Ektachrome. Exposure includes presets that emulate the warmth, softness, and realistic grain of dozens of real world film stocks, both color and B&W. Any preset can be the starting point for a signature look, adjusted to suit a particular subject, or applied to a batch of images using Photoshop Actions.
- ◆ Simplifies workflow. Streamlined color and saturation controls warm/cool with a single slider while preserving skin tones or preventing oversaturated reds. Makes gamma correction and contrast changes less intimidating by adding high level contrast, highlight and shadow controls to curves editing.
- ◆ Reproduces studio and darkroom effects such as cross processing, push processing, and glamour portrait softening. It encourages non-destructive editing, allowing users to render an adjusted image as a new layer in Photoshop. Advanced preview system includes an optional, split screen preview in addition to a before/after button. Exposure pairs unlimited undo/redo with fast rendering and lets photographers zoom and pan using Photoshop style keyboard shortcuts.
- ◆ Add realistic grain separately to the shadows, mid-tones, and highlights of an image. Unlike other products, Exposure doesn't add harsh noise to an image. Instead, it models the size, shape, and color of real world grain.

Exposure (ALE): For Windows and Macintosh199.95



XENOFEX 2

Offering 14 spectacular, time-saving filters for Photoshop, Elements and Paint Shop Pro, Xenofex 2 simulates spectacular natural phenomena. Little Fluffy Clouds can replace the sky in a photo, adds transparent fog or conjure a sunset from nothing at all. Imitate nature's fury with photo-realistic Lightning. Web designers and graphic artists can create striking images and text using sophisticated distortions such as Flag, Cracks and Television. Web animators will love Shatter's ability to explode images into three-dimensional shards that fly off the page. High-powered effects like Rip Open pick up where cliché effects such as Page Curl left off. Create a crumpled office memo or a shattered window in minutes. Photographers can transform ordinary images into jigsaw puzzles, constellations and intricate mosaics with a single click. In addition, Stain and Burnt Edges quickly apply an aged appearance to photos taken today.

- ◆ Create realistic natural phenomena, complex distortions and other stunning effects in seconds rather than hours. Professional-level special effects have never been easier!
 - ◆ Xenofex is fully scriptable with Photoshop's Actions feature, making complex and/or frequent tasks easy to automate.
 - ◆ Over 160 presets allow you to start making sophisticated graphics from the moment you install.
 - ◆ Xenofex 2 has a simple, uncluttered interface. Artists tweak their effects in a huge preview that includes underlying layers and productivity features, such as command menus and keyboard shortcuts. Presets put over 100 one-click effects at users' fingertips.
 - ◆ Each filter allows you to name and save your favorite settings for future use. If you're happy with a particular effect, you'll be able to instantly duplicate it any time you like!
- Xenofex 2.0 (ALX2):** For Windows and Macintosh109.95

EYE CANDY 5



Get three complete products for one low price or buy them separately. **Eye Candy 5: Bundle** includes full copies of **Eye Candy 5: Textures**, **Eye Candy 5: Nature**, and **Eye Candy 5: Impact** — 30 of the most advanced special effects. Graphic designers, digital photographers, and multimedia content creators will appreciate *Nature's*, *Texture's* and *Impact's* versatile and beautifully rendered effects.

Eye Candy 5: Nature — A collection of ten Photoshop filters that beautifully render a wide variety of natural effects, such as fire, smoke, rust, snow, ice and more, that any novice or professional designer will appreciate. Easy-to-use, select filters can create a new layer and render effects to it; this allows you to view, edit, or turn off these effects without modifying the original layer. Nature includes over 500 presets for frequently used effects; you can find the perfect effect quickly. The improved settings management system makes it easy to browse, share and collect new settings. Nature also works with 16-bit images. Color transitions are smoother, with less banding. Print documents reproduce colors more accurately.

- ◆ Create radiant solar flares, organic gradient glows, and wispy auroras.
- ◆ Melt images, melding colors and rendering oozing drops that drip from selections.
- ◆ Ignite artwork, creating incendiary effect from blue flames to white-hot rocket exhaust.
- ◆ Create refractive ripples around any shape, as well as chaotic reflective waves.
- ◆ Rust tarnishes and corrodes images and text with rust, moss and mold.
- ◆ Smoke simulates anything from voluminous clouds of smoke to murky haze.
- ◆ Snow Drift piles snow on text and lightly dusts images with surface snow or frost.
- ◆ Mimic poor or wet vision or camerawork, defocus images and add highlights and halos.
- ◆ Splash images with a variety of drops, spurts, spills and more.

Eye Candy 5: Textures — This collection of ten seamless texture generators for Photoshop and Photoshop Elements produces a variety of photo-realistic surfaces, including snake and lizard skin, fur, brick, stone and wood. Designers and 3D artists can quickly create backgrounds, skins, seamless tiles and more. Textures provides a limitless variety of photo-realistic effects for the cost of a typical stock library CD. And, because every filter has a seamless tile option, tiling is quick and easy. Textures includes settings for over 200 frequently used effects. The settings management system makes it easy to scroll through effects. Importing and exporting settings expands the palette. Textures works with 16-bit images and does not compromise expanded color depth. Color transitions are smoother, with less banding, and print documents reproduce colors more accurately.

- ◆ Simulate the fur of virtually any jungle beast or household pet.
- ◆ Create a limitless variety of brick, tile and block textures.
- ◆ Create virtually any style of architectural marble from Travertine to Brecciated.
- ◆ Reproduce almost any scaled skin using Lizard or Snake (overlapping) patterns.
- ◆ Simulate a wide variety of stonework from cobblestones to residential veneers.
- ◆ Transform images into impressionist paintings by aligning spirals with image details.
- ◆ Create lighting effects, grain and static in photos, as well as psychedelic textures.
- ◆ Simulate woven textures, such as denim or satin.
- ◆ Quickly create realistic sawn wood surfaces such as pine, mahogany, and oak.

Eye Candy 5: Impact - Collection of ten Photoshop filters which create chrome, brushed metal, glass, bevels, shadows, reflections and more. Offers beautifully rendered effects that any novice or professional designer will appreciate. Impact includes over 200 presets for frequently used effects; you can find the perfect effect quickly. The improved settings management system makes it easy to browse, share and collect new settings. Impact also works with 16-bit images. Color transitions are smoother, with less banding. Print documents reproduce colors more accurately. Unlimited undo and redo make experimentation painless, while context-sensitive help addresses user questions.

- ◆ Project dramatic light beam and spotlight effects from behind any selection.
- ◆ Create buttons and eye-catching text with custom bevel shapes and surface textures.
- ◆ Simulate textured metal surfaces such as brushed aluminum and polished brass.
- ◆ Simulate chrome, liquid metal and other shiny surfaces.
- ◆ Extrude gives 2D objects a classic 3-D look, adding thickness and perspective.
- ◆ Glass renders a colorful, gel layer over selections and makes great translucent buttons.
- ◆ Creates soft glows or hard outlines around any selection, including complex gradients.
- ◆ Motion Trail creates the illusion of rapid movement, even in a curved line.
- ◆ Perspective Shadow renders an array of drop, perspective and cast shadows.

Eye Candy 5: Textures (ALEC5T)99.95	Eye Candy 5: Nature (ALEC5N)99.95	Eye Candy 5: Impact (ALEC5I)99.95
Eye Candy 5: Bundle—including all three (ALEC5B)199.95		

ALIEN SKIN

IMAGE DOCTOR

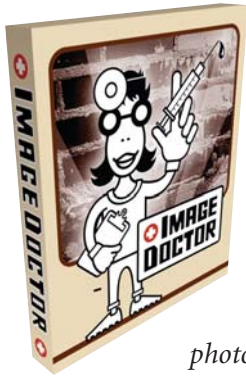


Image Doctor is a set of powerful image-correction filters for Photoshop, Paint Shop Pro, and other image editors. It magically removes blemishes and defects, quickly repairs over-compressed JPEGs, and seamlessly replaces unwanted details and objects. Professional and amateur photographers, photo editors, archivists, graphic designers and Web designers can quickly fix their images. Image Doctor offers selection-based image repair. Image Doctor is the only filter set to offer selection-based image repair. Use the familiar selection tools of your image editor, then correct large as well as small areas in one pass. The intelligent pattern matching of Image Doctor makes it the perfect complement to existing photo-editing tools.

- ◆ Clean, easy-to-use interface. Tweak your effects in a huge preview that includes a before/after toggle, command menus, keyboard shortcuts, and unlimited undo capability.
- ◆ Smart Fill replaces large objects and defects, intelligently combining the repair with the background. Smart Fill removes signs and trash from landscapes, unwanted tourists from vacation snapshots, and uninvited guests from party photos, leaving no seams.
- ◆ Scratch Remover mends small defects and removes unwanted background details. Simplifying photo restoration, Scratch Remover repairs scratches, folds, creases, and wrinkles. Microphones, telephone poles, and text are cleanly and quickly eliminated from photos, also.



Before Smart Fill

After Smart Fill



- ◆ Spot Lifter removes blemishes while preserving the texture and detail of the underlying image. Ideal for erasing skin flaws such as moles, birthmarks, acne, and beauty marks. Easily erase tattoos, as well as reduce dark circles, shadows, and wrinkles around the eyes. Spot Lifter also removes photo imperfections such as watermarks, stains and dust.
- ◆ JPEG Repair revitalizes over-compressed JPEGs. Remove blocky compression artifacts while retaining detail and adding grain. Repairs can be made to an entire image or as needed to smaller selections. JPEG repair can be used to repurpose Web graphics and replace lost originals.

Image Doctor (ALID)

For Windows and Macintosh.....99.95



SPLAT!

A powerful filter set for Photoshop and other graphics programs, Splat! combines frames, textures, edges, borders, mosaics and more with an award-winning interface in an affordable plug-in. Splat! uses over 200 MB of high-quality, high-resolution content to generate effects. Digital photographers, graphic/web designers and digital artists can set their images apart using the stunning effects of Splat!



Resurface



Fill Stamp

- ◆ Add realistic frames and mattes to any photo or other rectangle. Choose from 100 frames, including traditional wood frames, Dover, and geometric borders.
- ◆ Add any of 100 high-resolution surface textures to an object or selection. Adds natural media with only a few clicks, distorting your image to match the surface. Textures include paper, concrete, leather, brick, stone, metal, wood, and more.
- ◆ Add versatile, decorative edge effects such as halftone dots, torn paper, and pixelated edges. This effect works with any selection and looks great applied to text.
- ◆ Fill selections with familiar objects. Choose from over 100 stamp files, then scale the objects to fit. Fill Stamp adapts to any shape and works well on text. Seamlessly tile and colorize to match your image.
- ◆ Border Stamp applies the power of Fill Stamp to border making, creating borders from everyday objects such as pebbles, pills, and tickets. Great for themed borders, Border Stamp includes realistic drop shadows and adapts to any shape.
- ◆ Patchwork recreates images as mosaics such as light pegs, ASCII art, ceramic tile, and cross-stitch. Simply browse the Patchwork libraries, scale your tiles, and apply.

Splat! (ALS): For Windows and Macintosh89.95

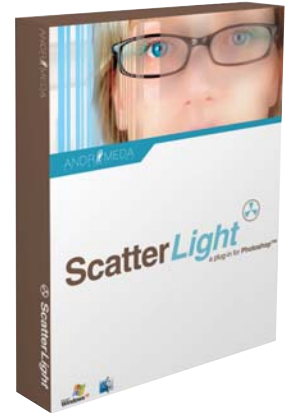
PHOTOSHOP PLUG-INS

ScatterLight Lenses

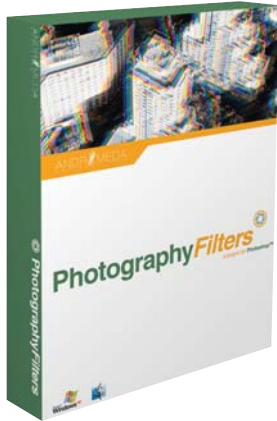
ScatterLight Lenses produce a broad scope of realistic patterned and diffusion lens effects. These lens effects range from subtle soft focus effects most often seen in professional portraiture and landscapes, to more dramatic effects that scatter and focus light over the brightest areas of an image.

ScatterLight Lenses has 4 distinct effects categories:

- ◆ Dream Optics - Gently pulls and scatters light from highlighted areas to create dreamy highlights throughout the image.
- ◆ SoftDiffuser - Softener for images to add diffusion or fog. The plug-in offers optical lens patterns to vary density.
- ◆ SoftFocus - For softening and refining portraits. Various optical lens patterns provide professional soft focus effects that can range from subtle to dramatic.
- ◆ StarLight - Focuses light over the brightest areas of your image to create a starlight effect. The plug-in offers many different optical lens patterns.



Scatter Light: For Windows (ANFSLLP) or Macintosh (ANFSLLM)97.95



Photography Filters

For Windows (ANPFS1P) ...69.95
For Mac (ANPFS1M).....87.95

Photography Filters

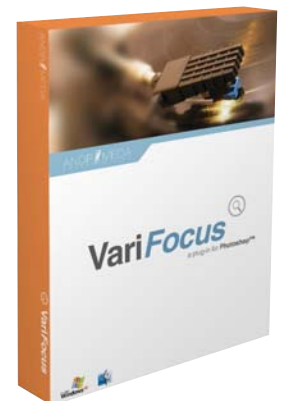
Photography Filters is a set of ten Photoshop compatible plug-ins that let you apply special effects to your images. Add a rainbow, reflect a bridge in an imaginary pool of water, make a streetlight twinkle, make a star look like it's moving... all in the click of a button. To produce these effects without the help of these plug-ins would be very labor intensive.

- ◆ cMulti and sMulti create versatile circular or straight, multiple lens, kaleidoscopic effects.
- ◆ Designs has 100 single bit textures and patterns that can be rotated, colored, bent and warped: a "2 1/2 D" effect impossible to achieve manually!
- ◆ Reflection provides instant clear pool reflections. Adjust position, feathering and opacity. A must for 3D scene creation.
- ◆ Halo provides controlled highlight diffusion. Adjust for direction, spread and intensity.
- ◆ Mezzo Line-Screen uses patterned screens within designs to convert photos to B&W mezzo line-art. Ideal for rich illustrations and image dependent textures.
- ◆ Star is the ultimate star design tool for adding single or multiple bright glints, sparks, and glows to your image.
- ◆ Velocity has three unique motion effects. Multiple ghosting highlight smears and fade-out.

VariFocus Filter

The VariFocus filter is essentially a depth of field effect that allows you to focus/defocus on an area in your image with custom control. Focus on an area by using their aperture masks or import your own. Distort, shift and save masks. Use the positive and negative unsharp masking controls before you apply focus/defocus to sharpen your image or to create a special effect. Direct attention to just where it's needed to reinforce a section of the image. Compared to a flat Gaussian blur, VariFocus, with its palette of contoured masks, can shift, distort, and scale to make that line between clarity and blur your decision.

VariFocus Filter: For Macintosh (ANFVFM) or Windows (ANFVFP)46.95



ANDROMEDA

PHOTOSHOP PLUG-INS

RedEyePro

The RedEyePro plug-in allows you to digitally correct red-eye seen in photographs. Red-eye is caused by light reflected off the subject's retina when a flash picture is taken in low light. While some cameras offer red-eye reduction as a feature, it can only reduce the problem, not eliminate it. RedEyePro gets rid of red-eye completely.

- ◆ Re-sizable box and paintbrush tools
- ◆ Fixes human and animal eyes
- ◆ Selective Unapply and Unpaint tools
- ◆ Works on both RGB and CMYK images

Novice and Expert Mode: The novice mode can be used in cases where the entire iris is red and needs correction. In cases where only a portion of the iris needs correction (non-circular areas), the expert mode should be used. The novice mode can be used in cases where the color to be corrected is only red. In expert mode, colors other than red can be corrected.

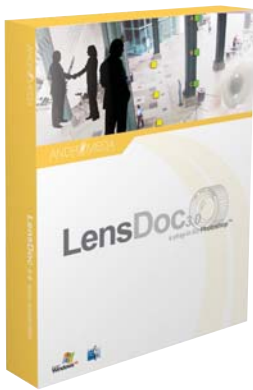


LensDoc

A universal solution to lens distortions, LensDoc corrects barreling and pincushioning distortions in your photos which are produced by zoom and wide angle lenses. It also allows simple perspective and rotational adjustments. Use the step-by-step novice interface, or professional level Expert Mode. Identify curved lines that should be straight and place the target points, LensDoc does the rest.

- ◆ 16-bit output for high resolution and print quality results.
- ◆ Perspective distortions are corrected easily by identifying two lines that should be parallel.
- ◆ Use supplied generic lens corrections or create and use your own lens correction curves
- ◆ “Make Rectangle” can change a shot from a skewed perspective to a head-on view of the image. Great for shots that are “just a little off” all the way to getting a straight on view of anything and everything you could ever want to see!

LensDoc:
For Windows (ANFLDP) or Macintosh (ANFLDM).....**97.95**



Perspective

A unique Photoshop compatible plug-in, this filter lets you change the current view or “perspective” of an image to any point in three dimensional space through the utilization of a user friendly interface. The Perspective filter uses a camera paradigm to introduce or enhance depth or perspective distortions in your images. Change and conform multiple images or text characters. Use factory presets with a visual interface or create your own.

- ◆ A “virtual camera” navigational tool offers a “tilt” and “swing” motion. The “tilt” movement permits depth-of-field control of the image plane. Moving the virtual camera to the left while focused on a stationary position accomplishes the “swing”. The zoom function also gives the effect of a dolly, in which the camera moves closer to or away from the image. For those looking for a quick and intuitive perspective tool, Perspective is the one.
- ◆ Perspective offers advantages over other perspective functions available in image editing programs:
 - A “virtual” camera in 3-D space.
 - Factory preset library with visual display.
 - Introduce consistent perspective in multiple images.
 - Introduce consistent perspective in a string of text characters.
 - Save presets with descriptions for future use or reference.



Perspective:
For Windows (ANFPP) and Mac (ANFPM).....**46.95**

ARTISTIC SCREENING TOOLS

Screens

The Screens Plug-In converts gray scale images into a wide variety of different line art screens from 15 to 400 lpi. With features like mezzotints, sharp contrast mezzograms, mezzoblends, ellipses, lines, circles, spokes, waves or any blended combination.

- ◆ Screens is the first true desktop solution for special effects screening!
- ◆ High quality, low cost alternative to the traditional photographic process.
- ◆ Dramatically reduced file sizes since images become line-art or bitmaps.
- ◆ You can produce camera ready output on 600 dpi printers.
- ◆ Illustrative & textured look can be added to a continuous tone photograph to make it look like a work of art.
- ◆ Alternative to conventional half-toning with added contrast and sharpness in detail for advertising.

Screens: For Windows (ANFSS3P) or Macintosh (ANFSS3M)**108.95**



EtchTone

A unique process for simulating the look of a steel etch starting with gray/color photograph or illustration. EtchTone combines an etch pattern (black and white) with the original image to create an “EtchTone”, a continuous tone screen that results in a classic old printing look that softens the harshness of solid black and white line screens. Depending upon the EtchTone effect desired, the plug-in will either Overlay the etch or Blend the etch in your continuous tone image.

- ◆ Start with grayscale, RGB, or CMYK photograph or illustration
- ◆ Controls to adjust amount of steel etch in your original image
- ◆ Controls to adjust original image sharpness, brightness, contrast
- ◆ Controls to vary the mix of original image and the etch pattern
- ◆ Helper text identifies controls that are moused over.

EtchTone: For Windows (ANFETP) or Macintosh (ANFETM)**97.95**

Cutline

The Cutline Plug-In is intended for use on continuous tone gray scale images. The best results are seen with photos or illustrations with gradient blends. Cutline screens are a combination of line/dot screens. A standard line screen represents gray tones in a photo or illustration by varying the thickness of black lines on a white background. However, in the Cutline screen, as lines get thicker, angles “cuts” appear in the lines, which cause them to break into dots. The result is an effect that emulates the classic old world engraving and woodcut techniques.

- ◆ Engraves selected parts of a grayscale photograph or illustration in 10 to 35 lpi. range, customizable to higher or lower settings.
 - ◆ Uses a unique directional engraving tool called the Stamper to set angles and curvature of engraved lines.
 - ◆ Re-interprets gradients into engraved lines of varying width and shape.
 - ◆ Offers wavy and straight lines and ellipses, making it easy to impact images with an elegant engraving or stunning woodcut effect.
- Cutlines** — Simple straight lines that are set at a fixed 13° angle for better line quality. See our output for comparison.
- Wavy Cutlines** — Wavy lines that are also set at a 13° angle and are also not adjustable in wavelength or height or angle. These tend to soften images somewhat, and may enhance contours and depth in some areas of your image.
- Elliptical Cutlines** — Allows the use of the Stamper Tool and Angle and Curvature sliders. The user can strategically place the curved lines to engrave and enhance any image or selection and is best suited for smooth surfaces.

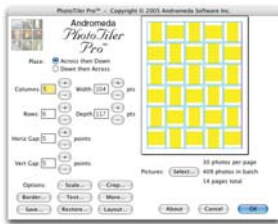


Cutline: For Windows (ANFCP) or Macintosh (ANFCM)**73.95**

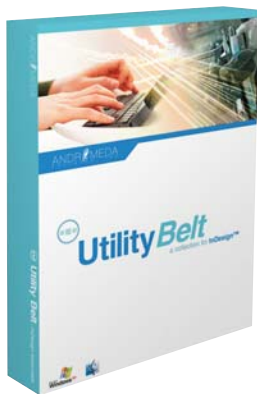
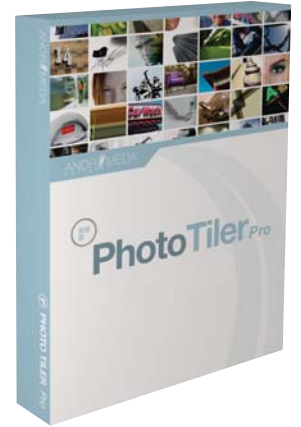
INDESIGN PLUG-INS

PhotoTiler Pro

An essential plug-in for Adobe InDesign users, PhotoTiler Pro can be used to automatically create a multi-page InDesign document containing entire folders full of digital photos. With PhotoTiler Pro you can use InDesign to easily print high resolution documents or pages containing many pictures arranged in a regular row and column format. Perfect for print or web image organization, photo albums, catalogs, real estate ads, and car ads.



- ◆ Image batch loading.
- ◆ Easy text captioning.
- ◆ Import text blocks associated with images.
- ◆ Automatic scaling and/or cropping.
- ◆ Print high resolution contact sheets.
- ◆ Border and font options.
- ◆ Choose how many rows and columns per page.
- ◆ Adjust the horizontal and vertical "gap" between rows and columns.
- ◆ Flow around obstacles during the layout process.

**Utility Belt**

Utility Belt is a versatile plug-in collection for InDesign. It is dedicated to making InDesign quicker and easier to use than ever before. With the three Utility Belt plug-ins CTBar, TypeEffects and ChartMaker, you can spend more time on the stuff that matters.

CTBar: Never before has it been easier to efficiently navigate through InDesign's large menu system. With almost 400 of InDesign's menu items available for one-click access, CTBar allows for easy navigation of the routine and not so routine tasks. Create new buttons and configure the toolbar to suit your your needs.

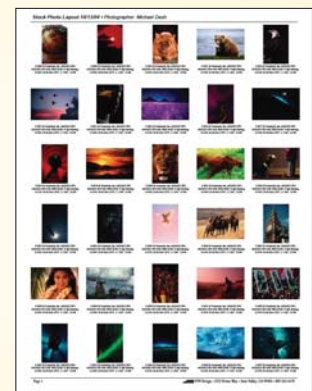
TypeEffects: TypeEffects is the answer to plain and boring text and titles. With twenty effects to apply to type and high quality output up to 600 dpi, it is easy for anyone to be a TypeEffects pro. Use current document colors that are automatically imported and turn a dull layout into a vivid work or art. Create professional looking work with little effort and no wasted time.

ChartMaker: ChartMaker allows you to quickly and easily create custom pie charts with up to 10 entries. Create half-graphs, explode any or all pieces of your graphs, choose colors and dimensions of your graphs, the possibilities go on and on.

PhotoTiler Plug-In v1.2d for Adobe PageMaker

Make an impact with your pictures

An essential plug-in for Adobe PageMaker users. PhotoTiler can be used to automatically create a multi-page PageMaker document containing entire folders full of digital photos. With PhotoTiler you can use PageMaker to easily print high resolution documents or pages containing many pictures arranged in a regular row and column format. Perfect for print or web image organization, photo albums, catalogs, real estate ads, and car ads.

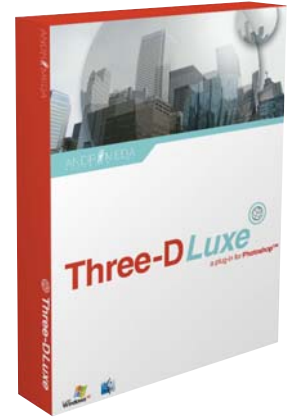


GRAPHIC DESIGN RESOURCES

Three-D Luxe

The best 3-D plug-in for quality rendering. Expands the functionality of its predecessor to include texture wrapping and combining images from Photoshop using textures and new features within the plug-in. If you are familiar with previous versions of this product, this represents a major upgrade of its features and capabilities. We hope you will find the new user interface both exciting and easy to use. If you are not familiar with it, you will be amazed at how you can create high quality rendered 3-D objects from your own images or from a variety of textures and surfaces provided with the product.

- ◆ Renders the highest quality smooth texture wrapped and sculpted 3-D surfaces
- ◆ Select from the Andromeda library of 3-D Textures, to control the surface textures (bump maps), and to save and apply presets from the SHORTLIST.
- ◆ Add the new dropout, texturing and combine features to your imported image; or create a whole new one.
- ◆ “3-D Geometry” UI controls the Surface, View-point, Light Source, Display, and other parameters having to do with 3-D space.
- ◆ Includes Stressed, Riveted, Aged, Mesh, and Alien sculpted surfaces.
- ◆ Combine 3-D textures, 3-D surface and your input photo. Adjust the contribution from each layer for phenomenal effects.



Three-D Luxe:

For Windows (ANFTDS2P) and Mac (ANFTDS2M)108.95



Shadow

Andromeda's Shadow plug-in is the most advanced shadowing plug-in available. It's uniqueness is in using 3-D geometry to cast realistic shadows. A shadow of your input image is imposed on a Casting Plane that can then be manipulated in 3-D space behind or in front of the Input Image. Individual cameras, a light source, and both expert and novice modes allow for complete creative control over any image shadow. Novice mode allows anyone to apply breathtaking drop shadows to images while an Expert mode opens up expanded tools to tweak shadows exactly how you want them.

- ◆ Real 3-D shadowing
- ◆ Perspective shadows with a virtual camera
- ◆ Multiple shadowing with up to four movable lights
- ◆ Stereo 3-D viewing
- ◆ Drop and cast shadows imposed on movable planes.
- ◆ Natural soft edges and blurring
- ◆ Preset library to load a number of different shadow effects.

Shadow: For Windows (ANFSP) or Macintosh (ANFSM)108.95

Velociraptor

The only plug-in that allows the user to create stylized motion trails that can Arc, Bounce, Cascade, Converge, Curve, Decline, Jolt, Jitter, Loop, Spiral, Spring, Streak, Trail, or Wave.

- ◆ Enter the plug-in with no selection for smooth motion trails and define its path.
- ◆ Enter the plug-in with an object selected to access a slightly different interface and a whole new world of motion trails.
- ◆ Takes a feature image, and smears or strobes it in any direction to create two basic types of Velocity Trails: Continuous Smear and Inverse Selection.

Velociraptor: For Windows (ANFVP) or Macintosh (ANFVM)46.95



GRAPHIC DESIGN RESOURCES

Techtures

This plug-in was created especially for Print, Web, and Multimedia artists who need beauty, subtle texture and productivity when creative texturing is necessary. Over 500 textures can be modified using "engines" within the plug-in. Some of the instant special effects include: Smoke, Stars, Explosions, Water Droplets, Lightening, Embossing, and dimensional and environmental texturing.

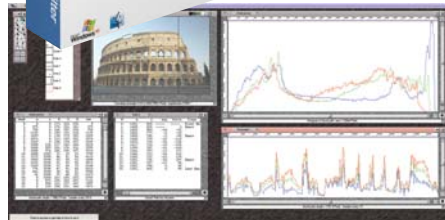
- ◆ Use the more than 500 hand rendered realistic textures to explore texturing effects.
- ◆ Three texturing engines allow you to blend, manipulate shadowing, or emboss the textures you select.
- ◆ Special environments and maps categories contain hundred of natural and synthetic phenomena such as water, smoke, glass, explosions, lighting effects.
- ◆ Each texture is a 300 dpi tile.

Scatter Light: For Windows (ANFSLLP) or Macintosh (ANFSLLM)97.95



Measurement Filter

For medical-scientific or graphic arts image analysis. Examine images with more detail and flexibility than in Photoshop. The Measurement Filter uses paths as rulers for measurement. Line Profiles, Histograms, Distance, Angles. Simultaneously examine data in multiple formats. Output measurements to the clipboard. New rulers (paths) can be imported, created and edited with a full Illustrator-like tool set inside the filter.



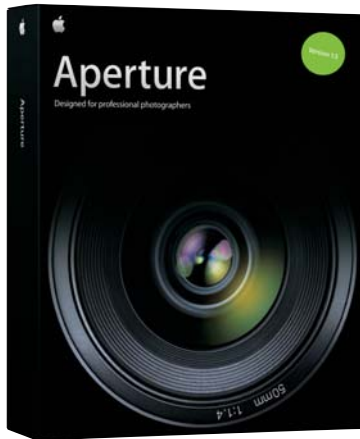
- ◆ Simultaneously examine the same data in multiple formats.
- ◆ Compare data from different parts at the same time.
- ◆ Plug-in does not alter the image.
- ◆ Output the measurements to the clipboard or to files.
- ◆ Draw freehand inside the plug-in or import a path. The path becomes your editable measurement plug-in.
- ◆ Select the path to measure Line Profile, Histograms, Distance, Angle, and more... along, under or within the path.
- ◆ Open as many windows as needed to view measurement data in different formats.

Line Profiles, Histograms, and Distance/Angle Measuring and more for web, print or image analysis

- ◆ The measurement plug-in uses paths as rulers for measurement. The image can contain several paths acquired from:
 - PHOTOSHOP - paths are imported automatically
 - SELECTIONS - are imported as multiple, editable, closed paths.
 - NEW PATHS - can be created and edited with a full, Illustrator like tool set inside the plug-in.
- ◆ The plug-in provides measurement path management:
 - Copy / modify paths
 - Delete paths
 - Save paths to a file
 - Re-load saved paths
- ◆ Measurement window(s) present the data associated with a measurement path.
 - Six presentation formats: Picture, Profile, Profile Table, Histogram, Histogram Table, Point (x,y) Table.
 - Pan /Zoom feature
- ◆ Open as many windows as you need to make comparative analysis easier.
 - See the same path data in a different format.
 - See more than one path data simultaneously.
- ◆ Use display mode palette to alter any window display options:
 - Turn on/off RGB, CMYK and grayscale color channels.
 - Select your choice of units; pixels (numbers or percentages), in, sq. in., cm., sq. cm.
 - Switch between six presentation formats.
 - Select computation speed: Measure sampled pixels or actual pixels.
 - In Layers; View color data only, transparency data only.

Measurement Filter: For Windows (ANFMP) or Macintosh (ANFMM).....134.95

APERTURE 1.5



Post-Production Tool for Professional Photographers

An all-in-one post-production tool for serious photographers, Aperture 1.5 provides everything you need for after the shoot. Using its comprehensive collection of tools, you can easily import, manage, edit, catalog, organize, adjust, publish, export, and archive your images more effectively and efficiently than ever before. Bring Aperture 1.5 and the new Macs together, and you have the ultimate photographer's workstation. The ideal systems on which to run the photo workflow application that delivers all the speed you need to work with and manage photos of any type—RAW, JPEG, or TIFF.

Adopted by some of the world's finest professional photographers, Aperture 1.5 sets the standard for photo management applications.

It offers flexible options that let you store images wherever you'd like. It features XMP metadata export, an advanced color adjustment tool, and a new Edge Sharpen tool. Metadata presets automatically add such critical data as copyright, credit, and captions. New options for the Loupe make a great tool even better. Also provides RAW support for more than 50 cameras. Aperture 1.5 runs on every desktop — from Mac mini to iMac to Mac Pro — and every notebook, so you can run Aperture at home or in your studio. And you can take all your photos with you on location or to a client's office.



FEATURES

Advanced RAW-focused Workflow

- ◆ Aperture features a RAW-focused workflow from capture to output that makes working with RAW files as easy as JPEG. No need to convert your RAW files before doing anything with them. Aperture automatically creates “versions” of your “master” images to preview, crop, color correct, sharpen, and apply other modifications to. What's more, they're totally non-destructive. Your originals are safe because Aperture doesn't change a single pixel in them. You never have to worry about accidentally overwriting your master file with an inadvertent Save.
- ◆ Since you're always working with “versions” of your RAW images, you can experiment as much as you'd like. Crop the image in different ways. Try different exposure, levels, and white balance modifications. Then compare the versions full screen to see which image best captures what you want to say.
- ◆ Don't worry about keeping track of all the versions you create, because Aperture manages them for you. It even arranges the versions in a Stack, making them easy to find and compare. Aperture remembers when you created each of them, and you can see at a glance how each version varies from the others. Versions also take up relatively little space — a fraction of what you'd use if duplicating TIFFs that are already 50-100MB in size. If you have a library with thousands of images, Aperture's approach to versioning leaves considerably more room on your hard drive for images. And you don't have to worry about inventing a process for naming all of those duplicate TIFFs.

Professional Photo Management

- ◆ Aperture is designed with powerful photo management tools. Not only can it accommodate hundreds of thousands of images, but Aperture lets you choose the best way to store them. Consolidated into a single library that Aperture manages for you. On a variety of hard drives, networked volumes, and optical media, or combination of. However you decide to store them, flexible organizational tools let you logically manage images using folders, projects, and albums and in the method that makes the most sense for your needs.
- ◆ Offers simple yet powerful tools for assigning metadata. You can begin the process on import, and presets let you fill metadata fields en masse.
- ◆ When it comes to keywords, Aperture provides a number of intuitive ways to assign keywords to images. For example, Aperture comes with collections of associated Keyword Sets (and lets you create your own). Call up the Wedding Set, for example, and you'll have a group of associated keywords — bride, table shots, wedding party, vows, candid, limo, cake cutting — any of which you can assign with a keystroke.
- ◆ The more photos you have, the more you need strong built-in search tools. Aperture obliges by providing a free-form search field you can use to find any photo instantly. Both those stored online and offline. You can use Aperture's Query Heads-Up Display to perform fast, live filtering of any album, project, or folder. Even your entire Library. Or you can use it to create pinpoint searches based on several or dozens of criteria — then save them for later use.

APERTURE 1.5

**Non-Destructive
Image Processing**

- ◆ Aperture lets you easily crop, straighten, reduce noise, correct red-eye, and eliminate dust. You can even “Lift” multiple adjustments — including cropping and straightening adjustments — from one image and “Stamp” them onto others.
- ◆ Try something completely different. Create a new version manually — from either an existing version or the master image itself. Create multiple versions of your original RAW master in 1/3-stop or in 50° color temperature increments. Then go fullscreen and compare them all — including the master image itself — side by side to see which adjustment best represents your intent.
- ◆ Comprehensive in scope, Aperture provides a full range of non-destructive adjustment tools. They let you fine-tune exposure; check and adjust Levels; modify White Balance; adjust hue, saturation, and luminance on a color-by-color basis; sharpen edges; modify highlights and shadow values. You can even create presets that speed image adjustments.
- Tweak RAW Decode settings using RAW Fine Tuning controls to adjust: contrast, sharpening, chroma blur, and noise reduction.
- Use Color Meter to sample pixel values in RGB, CMYK or LAB anywhere in an image and display them in HSL or HSB.
- Adjust levels (using a histogram with midtone and quadtone controls; includes Auto levels and Auto contrast settings).
- Set White Balance (includes an eyedropper for easy white point setting).
- Crop; Modify highlights and shadow
- Mix RGB channels for perfect black-and-white conversions.
- Reduce noise; Correct red-eye.
- Sharpen images using Edge Sharpen tool.
- Straighten images and horizons.
- Desaturate color levels.
- Change a color image to Sepia (with controls to set the degree of Sepia coloration).
- Spot tool provides one-click, nondestructive removal of spots, dust, and blemishes.
- Patch tool clones pixels from one area to another, and it offers precise controls (for softness, radius, opacity, and angle), letting you create perfect, seamless blends.

Powerful Compare-and-Select Tools

- ◆ When it comes to powering through a large shoot and making critical decisions, no single application offers the collection of compare-and-select tools you’ll find in Aperture. It lets you work Full Screen. Or on multiple screens. You can put two (or more) images onscreen at once for easy side-by-side comparisons.



- Pull out a Loupe and dial in the degree of magnification — up to 1600%. Rate images with a single keystroke. Aperture also lets you Stack images — just like you’re used to doing on a light table. In fact, it even has its own Light Table.
- Similar to but even more flexible than the light table you probably have in your studio. Aperture lets you select images from any location in your Library and place them on the Light Table. A free-form space for grouping images visually, the Light Table lets you resize, overlay, align, and distribute images any way you’d like and offers navigation control. It lets you quickly compare images, organize images into comp layouts — complete with the metadata of your choosing — then print them for further analysis or client review. You can even save multiple Light Tables as part of any project.

Tight Integration

- ◆ Tight integration with Mac OS X and other applications means that you can easily incorporate your Aperture images in Keynote presentations, iDVD slideshows, iWeb photo blogs, or other iLife ’06 or iWork ’06 projects using the Media Browser. Or drag images from Aperture and drop them into Apple Motion, Final Cut Express, Final Cut Pro, or other other applications.
- ◆ Aperture can also work hand-in-hand with Automator to help you create automated workflows. And it integrates with third-party applications just as seamlessly. For example, when you export RAW images, Aperture also exports their associated metadata in XMP sidecar files, making it easy for applications — like Photoshop — to pick up and use that metadata.
- ◆ Extensible architecture lets you install and take advantage of third-party extensions for sharing, storing, printing, publishing, and selling your photographs in exciting new ways.

Versatile Printing and Publishing

- ◆ Offering a complete color-managed workflow — based on ColorSync — Aperture offers a full complement of output options, letting you quickly and easily create contact sheets, printed portfolios, books, or customized prints. Print them yourself, or order professional prints and books without leaving Aperture.
- ◆ Create slideshows and stunning websites. You can even make your Aperture Library “to go” by syncing all or a portion of it to iPod. Take advantage of the drag-and-drop JPEG export feature to quickly take an image from your Aperture library and incorporate it in an iWeb photo blog, Keynote presentation, animation, slideshow, or cut away in iMovie HD or Final Cut Pro.
- ◆ Produce high-quality handsome, bound and printed Stock Books. Aperture includes a sophisticated book-layout engine that offers significant design flexibility. You can manually drag or have Aperture automatically place photographs in a layout for you. Double click on any photo, and you can zoom in or pan the image until it’s perfectly positioned. Aperture also lets you add both text and photo boxes; move, resize, and rotate photos; insert multi-column text; even use your own photos as full-bleed, ghosted background images.

Aperture 1.5 with Peachpit Press Apple Pro Training Series (APA1.5)269.95

MYSTICAL LIGHTING

Light is the very heart and soul of photography. It sets the tone and ambiance and is one of the most critical elements in any photo shoot. Unfortunately, elaborate lighting setups, expensive equipment and subjects where lighting conditions cannot be controlled puts the photographer at a disadvantage. For the digital artist, too often a photo contains the right composition, but the lighting doesn't portray the right tone and feel.

Mystical Lighting lets anyone apply photo-realistic lighting and shading effects to digital images. With this software you can enhance the ambiance of your images and improve its beauty. Mystical Lighting includes 16 visual effects, over 400 presets for instant results and an infinite variety of looks. It also includes powerful features such as layers, unlimited undos, visual presets, masking and dynamic effect controls that make exploring and applying effects fun and easy, to achieve studio quality results. Layers feature cloning, renaming, reordering, and full opacity blending.



Mystical Lighting (AUML)179.95

Mystical Lighting and Mystical Tint Tone & Color both feature

- ◆ They work as both a stand-alone application and a Photoshop plug-in.
- ◆ Unlimited undo allows you to go back as far as you need to.
- ◆ Effects are resolution independent. You can apply an effect to a small image and get the same result on a different sized or much larger image. Play around with small thumbnail sized images and comps and then apply to a high-resolution image later and get the same result.
- ◆ Add an unlimited number of effects, each with independent controls that can layer and interact with each other through the Auto FX SmartLayer design.
- ◆ Support Adobe Photoshop Actions, Last Filter Command and Layer Transparency.
- ◆ Support a Marquee Zoom and Pan capable adjustable full screen preview.
- ◆ ToolTips containing detailed instructions pop up when the mouse is held over a control for several seconds.
- ◆ Save user-defined presets to capture the exact look of an effect for later use.
- ◆ File loading and saving support for .psd, .tif, .bmp, .jpg, and .png file formats. Saving in Photoshop .psd format will export the effect onto a layered document with full transparency.
- ◆ Customizable desktop textures and interface colors to pick your favorite look.
- ◆ Optimized for single or dual processor machines on both Mac and Windows.

MYSTICAL TINT TONE & COLOR



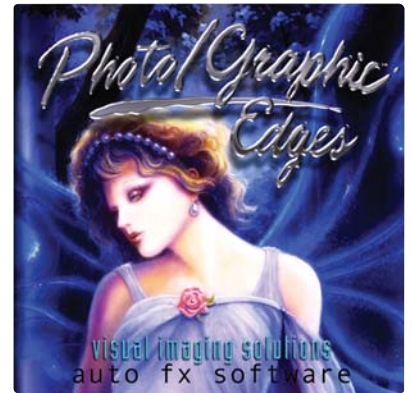
Mystical Tint Tone and Color (AUMTT)179.95

Color and tonal qualities are extremely important aspects of any image. Too often, a photo contains the right composition and subject but the colors and tones don't portray the right feel. Mystical Tint Tone and Color allows users to improve the look and feel of their images by controlling and manipulating the colors and tonal qualities in their images.

Mystical Tint Tone and Color is a suite of 38 color effects that are both easy to use and provide you with professional results in seconds. The effects are applied by brushing on or removing the effect from the desired area. There are over 700 professional presets for instant visual solutions and quick enhancements. Traditional graphics programs allow you to edit colors and tones of an image one step at a time. Mystical Tint Tone and Color provides an efficient workflow for combining multiple editing steps into a simple dynamic interface with unlimited undo and redo, layers, visual presets and a robust set of tools. Dynamically edit dozens of aspects of an image at the same time – all by brushing on where you want to apply the effect. You can, for example, deepen the tones, improve the colors and sharpen parts of a photo just by brushing over it.

PHOTO/GRAPHIC EDGES 6.0

Photo/Graphic Edges is one of the most popular Photoshop plug-ins ever created. Everywhere you look these days you see images wrapped in creative edges and frames made with it. Photo/Graphic Edges 6.0 offers digital camera owners, graphic designers, professional photographers, web designers and anyone involved with digital imaging, a rich set of creative tools for enhancing their photographs. It features layers, visual presets, unlimited undo / redo functionality and a rich set of brush on effects for exacting control over where the image is enhanced. It also offers ability to brush on effects and interact with the creative process at a new level. Users can interact with effects like Burned Edges and create their own unique Brushed Edges using watercolor, charcoal, oils, and other media. Photo/Graphic Edges 6.0 also includes 3 CDs of professionally created content to help users quickly achieve the look they desire. Included are over 10,000 edge effects, 1,000 matte surface textures, hundreds of color frames, vignettes and other creative content.



Photo/Graphic Edges 6.0
(AUPGE6.0)179.95

FEATURES

- ◆ Ships as a stand-alone application and a Photoshop compatible plug-in that works in popular programs like Photoshop, Elements and Paint Shop Pro
- ◆ Combine different edges together onscreen and dynamically reshape and transform them to create new edge looks. This is a very powerful new feature!
- ◆ Photo/Graphic Edges 6.0 is built on a powerful framework that uses effect layers, visual presets, layer presets and dynamic effect controls that allow users to rapidly explore new looks and quickly achieve the desired effect they are after.
- ◆ Effects are resolution independent. You can apply an effect to a small image and get the same result on a different sized or much larger image. Ideal for preparing content for both print and the web.
- ◆ You can build effects using SmartLayers that work together to make a composite effect.
- ◆ File loading and saving support for .psd, .tif, .bmp, .jpg, and .png file formats. Saving as Photoshop .psd exports the effect onto a layered document with full transparency.
- ◆ Supports unlimited undo/redo. Memory Dot functionality allows you to click and capture a look so you can explore and then come back to that same look at a later date.
- ◆ Supports Adobe Photoshop Actions, Layers and Last Filter Commands.
- ◆ Paragraph length Tool Tips containing detailed instructions pop up when the mouse is held over a control for several seconds.
- ◆ User defined visual presets can be saved for capturing the exact look of an effect for later use. Presets save a small thumbnail for visual reference when selecting a preset at a later date.
- ◆ Includes over 1000 surface textures that can be used as mattes behind the edges. Also included are hundreds of lighting tiles, brush shapes, surfaces and other creative content.
- ◆ Includes advanced Lighting, Shading, Shadow Generation, Blending Modes, Opacity Rendering, Edge Coloring, Visual Catalogs of Effects and Effect History features.

Photo/Graphic Edges 6.0 includes 14 Artistic Effects for Photos

Each effect is built to provide an infinite number of possibilities to explore. All effects are dynamic and foster an easy to use set of controls to make it simple to get a look you desire.

Brush on acid etched looks to your images and edges.

Combine multiple edges and effects together in a single composition to form a montage effect.

Lift sections of the image up through patterned edges and shapes.

Add interesting borders around your image using border shapes and 3D depth tools

Burn away parts of your image with this photo-realistic edge burning brush.

Brush on distortion effects to the edges to customize the look and style of the effect.

Use Putty Edges to reshape and adjust the edges to better fit your images and needs.

Brush on natural media styled effects using any of the included 230 brush effects

Add photo tabs around your images using both traditional or modern styles combined with 3D depth effects.

Give edges a smudged, softened appearance wherever the brush is applied.

Over 10,000 edges that enhance images by giving them shape and dimension.

Simulate the traditional darkroom transferring the inks from an instamatic photo onto thin paper and then brushing on wrinkles

Includes 175 professionally created frames that can be wrapped around your images to create stunning results.

Soft gradient vignettes can be applied to shapes and thousands of different edge styles to give customized feathered images.

AUTO EYE 2.0

AutoEye 2.0 is a revolutionary new way to enhance and improve digital images. Using patented I.V.I.T. technology (Intelligent Visual Imaging Technologies), AutoEye 2.0 reclaims color and detail that is lost in the transition from film or prints to digital. Unlike any other software solution on the market, AutoEye 2.0 actually rebuilds the color and detail in images automatically.

AutoEye 2.0 examines, and then automatically enhances digital images providing full spectrum color corrections, increased color vibrancy, contrast and sharpness, and rebuilt detail. It features an easy-to-use interface that lets users with absolutely no knowledge of complex correction concepts and processes such as adjustment curves, levels, cast removal, contrast and histograms— perfect any image. Fully supports Adobe Photoshop actions and can batch process files through Photoshop.

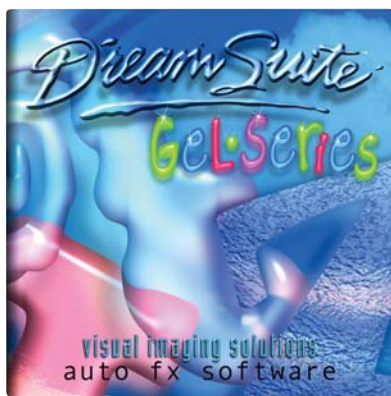
- ◆ Both a stand-alone and Photoshop plug-in, AutoEye 2.0 is built on a powerful framework that features full screen previews, visual presets and an integrated support with editing features such as Photoshop Actions, Layers and Last Filter Commands.
- ◆ Enhances images that have been resized or transformed and have lost their sharpness. Rebuilds image detail better than antiquated techniques like unsharp masking.
- ◆ Allows exacting enhancement to image tones and contrast values, and unrivaled state-of-the-art detail and color rebuilding.
- ◆ Add creative enhancements to photos. Add film grain and special blending modes to bring out highlight and contrast features.
- ◆ User defined presets with small thumbnail for visual reference can be saved to capture the exact look of an enhancement for later use.
- ◆ Memory Dots allow you to click and capture refinement you can explore and then come back to that same look at a later date.
- ◆ Paragraph-long ToolTips containing detailed instructions pop up when the mouse is held over a control for several seconds.
- ◆ Support Marquee Zoom and Pan capable, adjustable full screen preview.
- ◆ File loading and saving support for .psd, .tif, .bmp, .jpg, .gif, .png file formats.



AutoEye 2.0 (AUAE)109.95

New DreamSuite Pro Features

DreamSuite Series 1 and 2, and DreamSuite Gel Series new Pro versions offer professional features that enable you to combine different effects together using layers and masking. They use SmartLayer technologies to build effects on layers that work together to form a composite effect, and include the ability to create layer masks, correction layers, photo layers and effect layers. They even allow you to save and reload presets that rebuild your layers, masks and settings so you can apply the same effect to other images. Additionally, unlimited undo/redo functionality lets you go back as far as you like.



DreamSuite Gel Series Pro (AUDSGP)149.95

DREAMSUITE GEL SERIES PRO

DreamSuite Gel Series is a collection of five highly unique artistic depth effects (Gel, Gel Painter, Liquid Crystal, Crystal Painter, Gel Mixer) that provide designers with fresh capabilities and tools for adding interest to their work. It adds translucent and crystal depth to type, graphics, buttons, logos and can even be used on photos to add depth unlike anything you have ever seen. Exacting control is provided to the designer to interact and customize the visual results they desire to achieve. Customized depth brushes can be used to paint on crystal surfaces or translucent gel on a graphic or photo.

- ◆ Both a stand-alone application and a Photoshop compatible plug-in, DreamSuite Gel Series features advanced onscreen brush controls that allow the designer full customization of the visual effects.
- ◆ Advanced lighting, depth, shading and surface controls are easy to use and give photo-realistic quality results.

DREAMSUITE SERIES ONE & TWO PRO

Plug-Ins

Featuring 18 effects with over 440 presets, DreamSuite One lets you achieve visual results that are difficult or impossible to attain using any other software or method - including Photoshop. DreamSuite Series Two offers a wide diversity of visual options to make any photo you have more distinctive. Both work as either a stand-alone application or as a plug-in for image editing programs like Adobe Photoshop and Adobe Elements. Ideal for graphic designers, photographers and web designers, DreamSuites Series plug-ins avoid the "canned" look that other graphics programs are known for.

DreamSuite Series One Pro

35mm Frame – Put your photos into 35mm slides and create collages of your work.

Instamatic – Surround your photos with a photo-realistic instamatic frame.

Chisel – Unique hammered, chipped and dented depth bevel effects.

Liquid Metal – Brush and paint with liquid mercury, melted gold and other metals.

Crackle – Simulate photo-realistic aged photo cracks and crackled surfaces.

Metal Mixer – Blend metal surfaces together for a mix of unique depth effects.

Crease – Interactively bend and crease your photos for unique depth looks.

Photo Border – Add stylized borders around your photos and overlap collages.

Cubism – Add artistic cubed shapes to your photos and backgrounds.

Photo Depth – Add depth to your photos by fraying, denting and crimping.

Deckle – Rip and tear your photos to give them a torn deckled appearance.

Photo Tone – Blended sepia tones, focal glows and mottled backgrounds.

Dimension X – Over a dozen unique depth bevels, shading, glassy reflection and more.

Putty – Bend, twist, enlarge, push, reshape, squish and reform images with bezier tools.

Focus – Simulate soft focus, zoom, rotated, and motion focus effects.

Ripple – Interactive photo-realistic ripples, waves, water surfaces.

Hot Stamp – Add punch to your type and graphics with blends and melded glows.

Tape – Photo-realistic masking tape, transparent, duct, sports and other tape types.



DreamSuite Series 1 Pro (AUDSS1P)199.95 **DreamSuite Series 2 Pro (AUDSS2P)199.95**
DreamSuite Series Bundle (AUDSSBP): Consists of DreamSuite Series 1 Pro, DreamSuite Series 2 Pro, and DreamSuite Gel Series Pro**389.95**

DreamSuite Series One Pro

2 1/4 – Photo-realistic 2-1/4 film frames with unique translucency.

PhotoPress – Press photos down into the background scene for a distinctive look.

4 x 5 – Photo-realistic 4 x 5 film frames with unique translucency.

PhotoStrips – Slice and overlap image strips to form unique visual effects to any photo.

FilmGrain – Simulate traditional highgrain films for stunning enhancements.

PlasticWrap – Make elements in a photo look like they are pressing against a sheet of plastic.

FilmStrip – Interactively bend and crease your photos for unique depth looks.

FilmFrame Art – Creative filmstrip effects for combining images together artistically.

Tile – Shape your photo using tiles and depth to give you a layered depth appearance.

Puzzle Pieces – Turn photos into puzzles with realistic pieces you can move around and layer.

Mesh – Weave together strips of photos in a creative mesh effect.

Wrinkle – Apply photo-realistic wrinkles and depth shading to your photos.

- ◆ Work as both a stand-alone application and a Photoshop compatible plug-in.
- ◆ Effects are resolution independent. You can apply an effect to a small image and get the same result on a different or much larger image. This feature is useful for preparing content for both print and the web.
- ◆ Memory Dots allow you to click and capture a look so you can explore and then come back to that same look at a later date.
- ◆ Users can add an unlimited number of multiple light sources and shadows, each with independent controls.
- ◆ Supports Adobe Photoshop Actions.
- ◆ File loading and saving support for: .psd, .tif, .bmp, .jpg, .gif, .png file formats. Saving in Photoshop .psd format will export the effect onto a layered document with full transparency.
- ◆ Supports a Marquee Zoom and Pan capable adjustable full screen preview.
- ◆ Paragraph length ToolTips containing detailed instructions pop up when the mouse is held over a control for several seconds.
- ◆ User defined presets can be saved for capturing exact look of an effect for later use.
- ◆ Customizable interface colors and desktop textures let users pick their favorite look.

PAINTER X

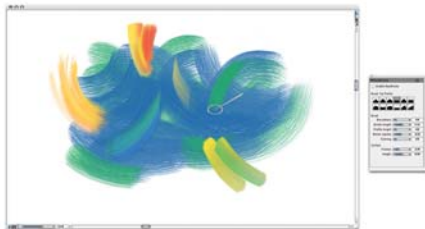


Next-Generation Art and Design Tools

The world's most powerful Natural-Media painting and illustration software, Painter X enables commercial designers, photographers, and professional artists to use their natural talents and techniques to create breathtaking works of art. This highly sophisticated paint and illustration application captures the intricate nuances of traditional art tools while taking advantage of the incredible power of digital media. Painter X features unique digital brushes, art materials and textures that mirror the look and feel of their traditional counterparts. Setting the standard for digital painting and illustration, Painter X digital art studio offers new composition tools, unparalleled performance, and the RealBristle painting system that models traditional brushes like never before—right down to the individual bristles on the brush. Painter X is must-have software for creative professionals, whether in film making, game development, commercial design, illustration, photography, or fine arts.

FEATURES

- ◆ Painter X offers a broad range of tools and features that inspire creativity, increase performance, and further extend compatibility with other industry-standard tools and applications. Has an impressive array of features that provide unprecedented power to replicate traditional art media—right down to the individual bristles on the brush.
- ◆ The fastest version of Painter—ever! Depending on system hardware, brushes perform up to 35% faster—and file opening and saving is up to two times faster!
- ◆ RealBristle Painting System heightens the responsiveness of the brush and represents a major milestone for digital painting. Artists can now faithfully replicate the sensation of the interaction between the paint, the canvas, and the brush.



- ◆ Auto-Painting Palette transforms a photograph into a painting by automatically applying brushstrokes while intelligently changing stroke size and direction using new Smart Stroke technology.
- ◆ Easily customize and back up your workspaces as well as export and share them with your friends and colleagues.

Ideal for commercial designers, entertainment artists, professional photographers, and fine artists.

- Commercial designers require powerful tools for their craft. That's why many of the world's foremost illustrators, automotive concept designers, industrial designers, architects, and graphic designers use Painter X. It enables commercial designers to vividly capture their creative vision and handcraft distinctive designs, illustrations, and logos for their clients.
- Leading artists in the entertainment industry use Painter X to produce some of the world's best-known movies, comic books and video games. Professional entertainment artists speed their production time use Painter X leveraging their natural talents and techniques to create astounding scenes, characters, vehicles, and textures.
- Painter has sparked a new trend in the professional photography market as photographers explore the creative possibilities of turning their photographs into paintings. Corel Painter X offers photographers new revenue streams by making it easier than ever to create breathtaking, hand-painted works of art from their photographs.
- Many fine artists use Painter as their primary art medium. Their works appear in galleries around the world, demonstrating that digitally-created art is an accepted medium on the world's art scene. Painter X enables artists to experiment with new techniques, without investing the time and money that would be required with analog mediums while achieving the same results.

Paint Shop Pro X: The Official Guide

Covers the entire product, including the suite of art media features, professional photo editing tools, and precision graphic design capabilities. Shows you how to get the most out of this professional image editing software. Learn to restore and revive images through editing, color correction, and other techniques designed to help achieve professional results. Step-by-step projects help readers practice the skills necessary to master Paint Shop Pro.

Dave Huss has been a photographer for over forty years and his work has won several international competitions. He is also the author of 21 books on digital photo editing and digital photography that have been translated into six languages, and is a regular contributor to Photoshop User, Photoshop Elements Technique and Nikon Capture Magazine.



PAINT SHOP PRO PHOTO XI



Image Editing

A complete digital photography toolkit that allows users to edit, manage and share their photos as well as create stunning photo projects. It offers a range of versatile features and enhancements that meet the needs of novices, photo hobbyists and professional photographers alike. In addition, it is also ideal for editing and enhancing photos used in a variety of corporate communications materials such as presentations, technical documentation, marketing collateral and emails.

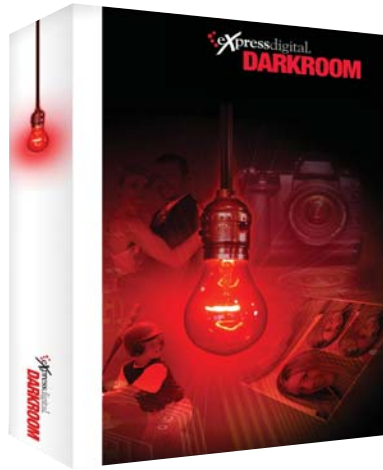
- ◆ It's now easier than ever to create stunning paintings from photographs! Major improvements offer greater control when Underpainting, and the new Smart Strokes technology adds more intelligence during Auto-painting.
- ◆ Underpainting palette includes color schemes based on various artistic styles, such as Impressionist, Classical, Modern, Watercolor, Sketchbook, and Chalk Drawing. You can also match your Underpainting's palette to that of any open image
- ◆ Composition tools help artists and photographers visually arrange a blank canvas prior to sketching or painting, or create an aesthetically pleasing composition from a photo using the Divine Proportion tool and the Rule of Thirds. Used throughout history by artists, designers, and architects alike, the Divine Proportion will help you compose your paintings like the masters! Similarly, pro photographers often use the Rule of Thirds to compose their photos.
- ◆ For multicolor selection, the new Universal Mixer palette gives you better control over color blending between the Mixer palette and the canvas.
- ◆ Get up and running with downloadable training videos by Painter Master Jeremy Sutton.
- ◆ Dodge and burn capabilities include two new image enhancement tools. Preparing photos for paintings is easier than ever!
- ◆ With improved layer grouping and combining, and enhanced support for layer merge modes, you can work more efficiently between Painter X and Adobe Photoshop.
- ◆ Artists can use the entire Wacom product line—including the Cintiq 21 UX interactive pen display, the Intuos 3 pen tablet, and the Wacom 6D Art Pen.
- ◆ Includes a color printed User Guide which provides useful reference information and fast solutions.
- ◆ Match Palette effect lets you match the color and intensity between two images. Just open an image that features your desired color scheme and use the Match Palette effect to bring the desired color scheme to the image you want to change.
- ◆ Optimized for use on Intel-based Macs, and compatible with Windows Vista.

Painter X (COP10)399.95

- ◆ Take the guesswork out of finding photos with the Photo Organizer. Search for images by filename, date, file type or folder location. The Organizer is fully customizable, offering the ability to assign keywords, ratings and other information to an image.
- ◆ The Color Changer Tool lets users easily and realistically change colors in their digital images. Rather than simply replacing a color, the Color Changer Tool detects and analyzes variations in brightness caused by real-world illumination and reapplies the illumination to the new color to create a realistic effect.
- ◆ Time Machine lets users see what their photos would look like if they were taken in another era and processed using historical photo development processes from the 1830s to the 1980s.
- ◆ Apply effects to an image to make it look as if it was taken with a variety of traditional film and filter types without buying additional camera accessories or plug-in filters.
- ◆ Skin Smoothing feature lets users remove any wrinkles, blemishes or scars from the people in their photos.
- ◆ Quick Review feature allows users to manage their slide shows quickly and easily. Quick Review allows users to apply a quick fix to a slide, set a rating for a slide, add captions and rotate images in a slide show.
- ◆ Photo Trays allow users to sort their photos by letting them group photos in batches for their convenience.
- ◆ Make the most of video clips by viewing and extracting freeze-frames from the clip.
- ◆ Curves and Levels dialog boxes give users exceptional control over some of the most critical image adjustments such as contrast, color and levels.
- ◆ Ease-of-use is further enhanced through a series of one step photo fixes, which automatically adjusts the color balance, contrast, clarity and saturation of an image.
- ◆ Corel Painter compatibility allows users to open and save images as RIFF files to create a seamless workflow with the world's most popular painting and illustration software.
- ◆ Crop Tool provides users with the ability to get the exact dimensions they want in a snap.
- ◆ Open and edit RAW files from leading digital cameras.
- ◆ Includes two-hour video training CD, which includes 32 different videos on a wide-range of photo editing topics to help users further accelerate their learning and achieve maximum results immediately.
- ◆ With the groundbreaking Learning Center you get great photos the minute you open Paint Shop Pro. Tools are intelligently organized by task within the Learning Center, enabling users of all skill levels to produce professional-looking results with no previous photo editing experience required.
- ◆ Bundled with Corel Snapfire Plus SE photo and video sharing software. Provides simple tools that allow users to create and share striking multimedia slide shows, as well as create personal photo projects such as calendars, greeting cards, albums pages, certificates and more.

Paint Shop Pro Photo XI (COPSP11): For Windows ONLY99.95

DARKROOM



A professional grade software solution for digital photographers looking to maximize the functionality and investment in their digital camera purchase, Darkroom combines a feature rich set of professional tools with a highly functional and easy to use graphical interface.

Designed for the emerging professional, advanced amateur and serious digital photographer, Darkroom provides wide-ranging image capture options, comprehensive photo storage and management features, extensive image enhancement tools, local printing capabilities and Internet publishing and storefront integration. Darkroom also protects a photographer's photo library with a unique USB Darkroom Key that provides the ultimate in security and protection of their digital images. In addition, Darkroom comes with over 150 ready-to-use borders and templates that make creating specialty photo products a breeze.

Also supports the use of PhotoReflect.com internet storefronts, creating an additional avenue for sales, and has built-in connectivity to Labtricity enabled labs, allowing photographers to send their prints and packages electronically to their fulfillment partners.

ExpressDigital Darkroom comes in three versions— Core Edition, Professional Edition, and Assembly Edition

Darkroom Core Edition is perfect for the emerging professional, advanced amateur, or digital enthusiast. This entry-level product allows photographers to create limitless print packages, apply graphic templates, edit & enhance photos, manage images, archive images, and more.

Darkroom Professional Edition is perfect for the professional specializing in portrait, wedding, sports, or event photography. The Professional edition completes the workflow by combining all the features of the Core Edition, plus adding powerful professional features including a template builder, green screen shooting, on-screen presentation modes, direct capture, color management, network capabilities, and more.

Darkroom Assembly Edition completes the Darkroom family by offering the perfect software for school, team sports, and group photography. The Assembly Edition supports up to eight different group photography workflows, database management, bar coding, auto creates yearbook CD's, prints ID cards, and more.

- ◆ Presentation mode allows clients to see their photos as they would look in a variety of settings, letting them sort through photos, and pick their packages instantly. Enhance the presentation further with music and a slide show feature.
- ◆ Darkroom Core Edition can network with the Professional Edition. The networking of the two allows future growth for your photography business as well as letting you expand your operations and your profits.
- ◆ Advanced RAW workflow makes working with RAW images just as easy as working with JPEGs. All Darkroom editions have the ability to adjust the white balance, color, exposure, contrast, and shadows quickly to digital RAW, expanding their flexibility and practicality. Darkroom's RAW compatibility includes formats from the leading camera manufacturers such as Canon and Nikon, as well as Adobe DNG. Work with RAW images through every step of its powerful workflow—from capture to print.
- ◆ Incorporating a digital workflow into any photography business is easy with the user-friendly set-up wizards. Quickly set-up print packages, print options, online storefronts, and connectivity to professional labs with only a few clicks of the mouse. Increased software usability, together with expanded features and functionality, provide the maximum user experience.

Darkroom Core Edition (EXEDD).....399.95

Darkroom Professional Edition (EXEDDP)..1295.95

Darkroom Assembly Edition (EXEDDA).....3995.95

EXPRESS DIGITAL

DARKROOM

Professional Edition Step-up Features

Perfect for the professional specializing in portrait, wedding, sports, and event photography, Express Digital Darkroom Professional Edition completes the workflow by combining all of the elements of the Core Edition, plus adding powerful professional features including a template builder, green screen shooting, on-screen presentation modes, direct capture, color management, network capabilities, and more.



- ◆ Use with any digital camera including Nikon, Canon, Olympus, Sony, Kodak and Fuji.
- ◆ Open any standard digital file format, as well as RAW and proprietary digital camera files.
- ◆ Import from any compatible Twain source.
- ◆ Create standard and custom print packages.
- ◆ Create new photo products using borders, text, and overlay graphics.
- ◆ Create fun novelty photos using the built-in green screen drop out technology.
- ◆ Point and click image editing including color, sharpness, brightness and contrast controls.
- ◆ One-click enhancements include vignettes, graphics, text, B&W, sepias and duotones.
- ◆ Advanced retouch workflow and much more...
- ◆ Automated proof sheet printing and custom layout capabilities.
- ◆ Electronic on-screen proof presentation.
- ◆ Built-in slideshow and much more...
- ◆ Easily catalog, organize and archive digital photos by event, subject or location.
- ◆ Copy, rotate, preview and add notes to your photos.
- ◆ Archive photos to CD or DVD and much more.
- ◆ Print packages directly to any Windows-based small or large format ink jet printers from major brands such as Epson, HP, Lexmark and Dell.
- ◆ Print packages directly to any Windows based dye-sub printers from major brands such as Sony, Kodak, Mitsubishi, Olympus and Hi-Touch.
- ◆ Print on location, in studio or batch print.
- ◆ Use Labtricity to send orders electronically to a lab for printing and much more.
- ◆ Using PhotoReflect.com, photographers can now use Darkroom like never before. They can connect e-mail addresses with photos via the Darkroom software, providing the ability to actively e-market to customers to increase storefront sales. This powerful feature automatically sends a link to customers directing them to preview, share and buy their published photos.

- ◆ Easily make your own graphic templates.
- ◆ Make photography fun with built-in green screen shooting.
- ◆ Sell immediately using on-screen presentation modes.
- ◆ Direct capture with the industry's best professional digital cameras.
- ◆ Color manage your workflow from capture to print.
- ◆ Utilize production printing to professional digital printers and mini-labs.
- ◆ Print to file with user defined raster printing.
- ◆ Scale to any size studio using network capabilities.

Assembly Edition Step-up Features

Darkroom Assembly Edition enhances the workflow for the school and group photographer by combining all of the elements of the Professional Edition, plus these required specialized features: Supports up to eight different group photography workflows, database management, bar coding, auto creates yearbook CD's, prints ID cards, and more.

- ◆ Support eight different flexible group photography workflows.
- ◆ Record data along with photos; bar code for quick data entry.
- ◆ Auto print order envelopes, slate cards, and shoot sheets
- ◆ Synchronize data from multiple field computers.
- ◆ Auto create yearbook CD's; Sort print jobs by school, grade, teacher, group, or team.
- ◆ Easily print ID cards and other valuable service items.
- ◆ Simple user driven import wizard automatically connects data and photos from any source.
- ◆ Over 50 school templates are included along with improved automated composites for groups.
- ◆ Full-featured Retouch Workshop contains the most common image editing tools. The ability to clone, dodge and burn, paint, remove blemishes, smooth skin and apply spot color, are highlights of the new Retouch Workshop.
- ◆ Direct tethered camera support for the industry's best digital cameras.
- ◆ Direct support to the industry's best digital mini-labs and other photo quality digital printers.
- ◆ Foreign Currency Support – ability to choose different currencies within the application for use in a variety of geographic locations around the globe.
- ◆ Proactively send customer e-mails to view their photos on-line at PhotoReflect.com, driving valuable reorders quickly and efficiently.

DARKROOM CORE • PRO • ASSEMBLY

Darkroom Key Features	Core Edition	Professional Edition	Assembly Edition
Capture			
Use with any digital camera	✓	✓	✓
Open any standard digital file	✓	✓	✓
Use custom ICC camera color profiles	✓	✓	✓
Open RAW and proprietary digital camera files	✓	✓	✓
Import, rename and reformat photos	✓	✓	✓
Acquire images from a TWAIN source	✓	✓	✓
View photo metadata from digital camera	✓	✓	✓
View image file properties	✓	✓	✓
Advanced RAW workflow	✓	✓	✓
Network to Professional Edition	✓	✓	✓
Scale to any size studio using networking capabilities	-	✓	✓
Direct capture from the industry's best cameras	-	✓	✓
Manage			
Catalog photos by customer, sitting, event or location	✓	✓	✓
Add notes to your photos	✓	✓	✓
Search catalogs by customer, event, location or photographer notes	✓	✓	✓
Add, copy rotate, hide and remove photos from catalogs	✓	✓	✓
Manage graphic template library	✓	✓	✓
Add data fields to photos	✓	✓	✓
Quick set-up wizards	✓	✓	
Archive photos to CD, DVD or external hard drive	✓	✓	✓
Data import wizard to catalog photos by school, group or event	-	-	✓
Bar code for quick data entry	-	-	✓
Print order envelopes, slate cards and shoot sheets	-	-	✓
Synchronize data from multiple field computers	-	-	✓
Sort photos by data elements	-	-	✓
Supports (9) different flexible group photography workflows	-	-	✓
Enhance			
150 graphic templates included	✓	✓	✓
Apply graphic templates from authorized third-party vendors	✓	✓	✓
Non destructive image editing	✓	✓	✓
Crop, scale, move and rotate photos	✓	✓	✓
Create B&W, Retro, Sepia or Duotone colors	✓	✓	✓
Add text to photos - edit, format and rotate	✓	✓	✓
Add white or black vignettes around photos	✓	✓	✓
Exposure, contrast, brightness, shadow and tone adjustments	✓	✓	✓
Professional red eye removal	✓	✓	✓
Automatic grey card click balance	✓	✓	✓
Built-in color adjustments and filters	✓	✓	✓
Build your own templates with the Template Workshop	✓	✓	✓
Retouch workflow with Adobe Photoshop	✓	✓	✓
Shoot Greenscreen	-	✓	✓
Retouch Workshop including clone, blemish, paint, dodge, burn, sharpen, blur, colorize, and more	-	✓	✓

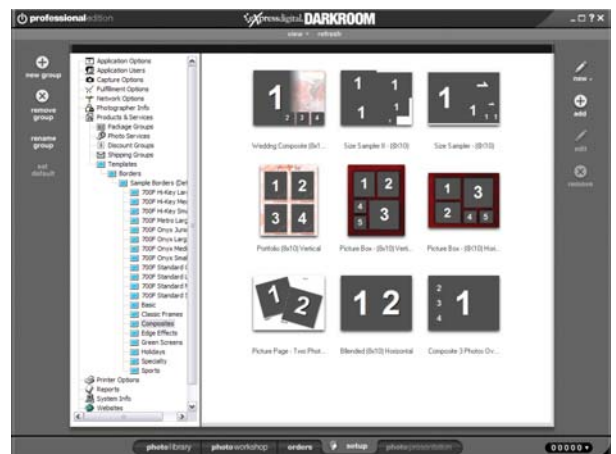
EXPRESS DIGITAL

DARKROOM CORE • PRO • ASSEMBLY

Darkroom Key Features	Core Edition	Professional Edition	Assembly Edition
Proof			
Create composite sheets and proof books	✓	✓	✓
Edit and proof orders before sending to print	✓	✓	✓
Automated on-site proof sheet printing	✓	✓	✓
Sell			
Drag and drop photos to shopping cart	✓	✓	✓
Create your own website and sell photos online with ExpressDigital PhotoReflect.com® - No			
Storage Fees, No Upload Fees, No Monthly Fees	✓	✓	✓
E-mail marketing drives customers to their photos	✓	-	-
Foreign currency support	-	-	✓
Receipt printing	✓	✓	✓
Quickbooks integration	✓	✓	✓
Photo thumbnail invoice	-	✓	✓
Sell immediately using on-screen presentation modes	✓	✓	✓
Built-in slideshow	✓	✓	✓
Built-in studio management reporting	✓	✓	✓
Print			
Create limitless print packages	✓	✓	✓
Print to professional labs with ExpressDigital Labtricity®	✓	✓	✓
Interactive print queue	✓	✓	✓
Use custom ICC printer color profiles	✓	✓	✓
Batch print photos within graphic templates	✓	✓	✓
Print to multiple Windows printers	✓	✓	✓
Set user-defined print policies	✓	✓	✓
Print to multiple dye-sub and mini-labs	-	✓	✓
Print to file with user defined raster printing	-	✓	✓
Sort print jobs by data elements	-	-	✓
Print ID cards and other service items	-	-	✓
Create yearbook CD's	-	-	✓



Non destructive image editing tools means the original is always safe and sound.

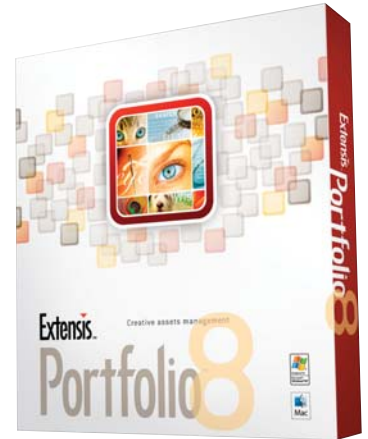


Templates

PORTFOLIO 8

Creative Assets Management

Thousands of creative files and photos to manage? Extensis Portfolio 8 puts your files at your fingertips. With lightning-fast access to all of your files (no matter where they live), you'll never waste time hunting for an important asset. Popular with professionals everywhere, Portfolio keeps photos, logos, collateral, comps and more organized with precision and easily accessible to the right parties. Portfolio 8 makes it easy to organize files into visual catalogs and find specific files in an instant - then share those files across workgroups or on the web. From web to print, from comps to finished work, Portfolio's database-driven catalogs equip you with the power to effortlessly find, preview and repurpose all your files. Portfolio is the brilliant virtual assistant that will simplify your life.



FEATURES

- ◆ Fast cataloging quickly adds files to your Portfolio catalog in the background, allowing you to start working with them instantly.
- ◆ Drag and drop, reorder or sort items in galleries, SmartGalleries and disk folders. This information is retained separately for each user in a workgroup environment.
- ◆ Scratchpad galleries are temporary baskets used for sorting, editing and merging files from multiple galleries or searches into a single gallery. These can be used for printing, collecting or publishing.
- ◆ Portfolio automatically rotates thumbnails and previews from digital cameras that record the camera's orientation, streamlining photographers' post-shoot workflow.
- ◆ The properties dialog is the one-stop location to find and edit any metadata. The most common information needed (such as file type, resolution and file size) has been consolidated to the first tab for faster viewing.
- ◆ Portfolio's ability to use Screen Previews rather than the original files makes the process of finding and sharing your files - even those that are offline - much faster.
- ◆ Portfolio can read common metadata such as frame rate, duration and audio tracks from video files.
- ◆ Express Palette (floating palette) makes the contents of your Portfolio catalogs instantly available within any application, at any time, via a global keyboard shortcut. Find, copy, open and use any file you've cataloged - without even launching and opening Portfolio. The palette displays thumbnails of each item in your catalog and its filename.
- ◆ Take advantage of the IPTC4XMP standard known as IPTC Core, used by Adobe Creative Suite 2 applications. Extends Portfolio's custom fields into popular creative applications, allowing a two-way exchange of information.
- ◆ Galleries (or subsets) in Portfolio can be set to automatically find any cataloged file that meets your pre-determined criteria. This ensures that your galleries are always updated without you having to lift a finger.
- ◆ Collect files, create a catalog, add a copy of Portfolio Browser and burn a CD/DVD in one step. Collect original images or low-res JPEG previews for distribution. Automatically change paths of cataloged files to a destination disk, allowing you to move content offline without having to relink files
- ◆ Save time by converting cataloged images (individually or as a batch) to JPEG, TIFF, VEZ or PFZ format within Portfolio. Define resolution, size and color mode.
- ◆ Write Portfolio metadata (keywords, descriptions, custom field content, etc.) back into your image files, so the information travels with your files, independently of Portfolio. Includes EXIF, IPTC and XMP.
- ◆ Create multiple, automated workflows that do all the work of cataloging, keywording, renaming, even archiving for you. You can also save your cataloging option presets, so they can be used again at any time.
- ◆ Portfolio makes it easy to email proofs to clients, partners and others by generating low-res JPEG previews and allowing you to email them directly within Portfolio. Also burn JPEG previews to a CD/DVD.
- ◆ Create low-res JPEG previews up to 2,000 pixels in size and instantly view your files full-screen, no matter where they are stored.
- ◆ Portfolio dramatically simplifies the process of generating high-quality web content - even if you don't know HTML.
- ◆ View or search EXIF data from digital cameras. Portfolio can extract the data by default, without set-up or configuration.
- ◆ Catalog any digital file. Generate and extract thumbnails, display screen previews, index text, and extract metadata from most standard graphic and video formats including Word and Excel files in Windows. Can also provide full-screen previews from Adobe DNG RAW files, added support for current RAW files, and thumbnails and full-screen previews of Quark XPress documents.
- ◆ Create professional custom views of images with a rich variety of formatting options.
- ◆ Print customized contact sheets quickly and easily. Simply choose the number of images per page and Portfolio will size and arrange the images in a grid, ready for print.
- ◆ Create a customized workspace by adding or removing buttons from the toolbar, placing frequently used commands right where you need them.
- ◆ The answers are at your fingertips with Portfolio's searchable HTML-based help system. We even include new sample catalogs with pre-mapped custom fields and Smart-Galleries for specific workflows - making it easier to customize Portfolio to your needs.

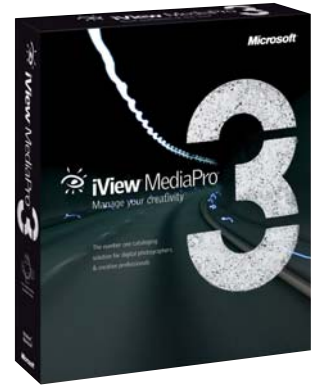
Portfolio 8 (EXP8)
For Windows or Macintosh.....199.95

iVIEW MULTIMEDIA

MEDIAPRO 3

Digital Management and Cataloging Software

iView MediaPro, for Windows and Macintosh, is a digital asset management and cataloging solution for photographers and creative professionals. It supports more than 100 different media formats, and enables you to create a customized, centralized and searchable repository through which a high volume of digital files can be managed. Quickly and easily import, organize, search, annotate, repurpose and archive all of your digital files. The customizable user interface will only display the metadata fields you need while you're working and personalize IPTC terminology to fit your workflow. The notepad feature enables communication between creative professionals and promotes client feedback, enhancing your digital workflow. The included Catalog Reader allows you to distribute iView catalogs to anyone using a Windows or Macintosh computer.

**Powerful Import Options**

- ◆ Professional file format support with drag & drop import of 100+ different media formats including images, audio, video, fonts, illustrations, PDF, HTML and digital camera RAW files.

Intuitive Archiving & Retrieval

- ◆ Create visual databases (catalogs) with previews and metadata of all your media files.
- ◆ Browse and search media, even when the original files are offline.
- ◆ Use powerful search functionality to locate and retrieve your valuable assets. Keep catalogs up-to-date with Folder Watching.

Versatile Media Display

- ◆ Quickly and easily review, compare, organize and present all of your digital media files the way that you want.

Notepad Tool

- ◆ Enables communication between you and your client. The client simply drags and drops selected catalog items onto the Notepad palette, adds comments and then e-mails the Notepad file. This file imports easily into the your original catalog where you can view the client's feedback and execute the appropriate actions.

Full Metadata Control

- ◆ Drag-and-drop assign and batch apply metadata to media files using industry standards (including IPTC/XMP Core & EXIF). Embed metadata into original files.
- ◆ Import/export of color label metadata in XML files.

iView MediaPro 3 (IVMP3)179.00

Robust Batch Processing

- ◆ Streamline your workflow by annotating, renaming and converting large numbers of files quickly & easily. Edit images in single or batch mode with Version Control.

Catalog Reader

- ◆ Catalog Reader is a free utility that allows MediaPro users to distribute and share iView catalogs with anyone using a Windows or Macintosh machine.
- ◆ The Light Table function enables you to view and compare up to 6 images on-screen and mark items with labels and ratings to aid the image selection process.

Creative Export Options

- ◆ Publish and distribute media with cross-platform slide shows, movies or Web Galleries.
- ◆ Create high quality PDFs, contact sheets & printouts of any size and layout.

- ◆ Catalog Reader supports all 100+ media file formats of MediaPro, offers slide show and search functionality and supports Notepad.
- ◆ iView customers can include a MediaPro catalog and copy of Catalog Reader on a CD or DVD and their clients can launch and run the catalog directly from the disc, without installing an iView application.

iVIEW MEDIA**Media Management Made Easy**

iView Media is a media management and cataloguing application for Windows PC and Macintosh computers. This cross-platform solution offers a rich, intuitive experience, suitable for all users and is essential software for managing your digital hub. iView Media supports drag-and-drop importing and importing directly from your digital camera.

- ◆ Import more than 70 popular PC, Mac and Web media formats including images, video and audio files.
- ◆ Review and playback media files in catalogs.
- ◆ Organize, classify and annotate media with searchable tags.
- ◆ Add comments, locations, events, people, authors and custom categorization.
- ◆ Fast access to media from disks, CD-ROMs and other unmounted volumes.
- ◆ Automatically generate web pages.
- ◆ Instant playback of movies, QTVR and music in any view.
- ◆ Print contact sheets, full images and media lists.
- ◆ Watch spectacular slide shows with images, movies and music.
- ◆ Store and back up your files to volumes and removable media.

iView Media (IVVM)79.95

NIK SHARPENER PRO 2.0

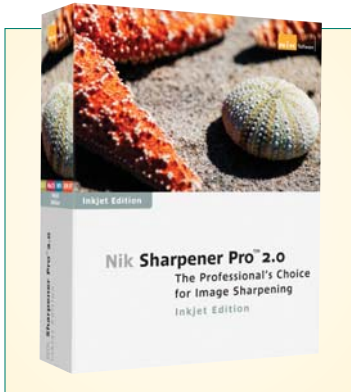


Image Sharpening Software

Nik Sharpener Pro 2.0 is an award-winning sharpening software for print enthusiasts and professionals. Available in two versions, the Inkjet Edition is designed to optimize prints for all inkjet printers, including small, medium, and large format printers, while the Complete Edition works with all print processes (Continuous tone, Halftone and Inkjet printers). Sharpen all of your images optimally and to the same degree every time in seconds. Sharpen images accurately and quickly using inputs such as the image size, source, printer resolution, etc. The software then analyzes an image to determine how to optimally sharpen it. Sharpen images for any print size, receive warnings when images have insufficient detail or low dpi, sharpen based on the viewing distance of the image, view

the “Real Resolution” clarity index of an image, and much more. In addition to sharpening for inkjet printers, the Inkjet Edition sharpens images for display on the Internet or on an electronic device, such as a projector or monitor.

FEATURES

- ◆ Work on 16-bit images and sharpen them without having to reduce them to 8-bits.
- ◆ Compatible with Adobe Photoshop, Photoshop Elements, Corel Paint Shop, Ulead PhotoImpact.
- ◆ Nik Sharpener Pro 2.0 Selective tool lets you selectively apply any of the sharpening filters to your images. Use a mouse, Pen Tablet, or any other input device to paint sharpening into the image, controlling the amount and location of the effect quickly and easily.
- ◆ Advanced Panel provides you with additional controls to set the amount of sharpening both to the entire image, as well as to specific areas within the image. The Advanced Panel consists of five sliders that can control the amount of sharpening applied to specific areas within the image.
- ◆ RAW Presharpening filter enhances images converted from a RAW file format.
- ◆ Large preview area allows you to see how the sharpening alters the image. With the large preview area you see more of the image and get a better understanding of the results.
- ◆ Two different overlay modes enable you to see a visual representation of the sharpening that will be applied to the image.
- ◆ Sharpen different areas according the detail type and that detail's need for sharpening.
- ◆ Adapt to images that have already been sharpened to prevent over sharpening from occurring. Also protects trouble areas from sharpening-induced artifacts.

Nik Sharpener Pro 2.0 is a powerful, easy to use tool that takes over the complicated process of optimal image sharpening while easily fitting in your digital work flow. It replaces the need for complicated and impractical sharpening methods currently available within most image editing applications, and takes into consideration all of the key elements of a printed image in order to provide you with optimal sharpening.

Traditional sharpening methods, such as Unsharp Mask or High-Pass based sharpening, are not easy to use and typically ask the user to base the sharpening process on results as displayed on the monitor. While this method works well for images intended to be viewed on a monitor, it is less than adequate for other media. Effective image sharpening must take into consideration a number of variables before sharpening, from the characteristics of detail in the image, to the intended media, to the circumstances surrounding the viewer and viewing distance. Nik Sharpener Pro 2.0 identifies the key elements that comprise the image in its final form in order to produce an optimal level of sharpening. These key elements include the following:

1) Image detail and detail relationships

2) Print process

- a. The method of recreating image detail printing (continuous tone, inkjet, or halftone)
- b. The resolution of output device
- c. The substrate type and characteristics

3) Viewing characteristics

- a. The viewing distance at which the image will be displayed
- b. The personal preferences of the artist creating the print

Nik Sharpener Pro 2.0 begins by considering the variables that control the final output, including detail characteristics of the image, image size, printer type, printer resolution, substrate characteristics, and viewing distance. Then using advanced algorithms, it analyzes and adapts the sharpening process to achieve optimal image sharpness. The algorithms identify detail structures as well as differentiate detail from one area to another (the sky and trees, for example). They identify the technical changes and manipulations that have already been made, and protect areas which may be subject to over sharpening as well as areas where sharpening may otherwise introduce unwanted details. The Autoscan process enables Sharpener Pro 2.0 to adapt to every image automatically. This is especially helpful when applying batch processes to your images, as Nik Sharpener Pro 2.0 will alter the sharpening characteristics throughout each image, based on the unique characteristics of that image.

NIK SOFTWARE

NIK SHARPENER PRO 2.0

Inkjet Edition

Nik Sharpener Pro 2.0 Inkjet Edition is designed for professionals who use inkjet printers as their primary output device. In addition to sharpening for inkjet printers, the Inkjet Edition sharpens images for display on the Internet or on an electronic device, such as a projector or monitor.

Inkjet Edition (NINSPID2).....149.95

Complete Edition

Nik Sharpener Pro 2.0 Complete Edition contains all of the Nik Sharpener Pro 2.0 tools for complete optimal image sharpening. Gives you the ability to sharpen images for continuous tone printers, halftone printers, inkjet printers, and electronic display devices such as projectors and monitors.

Complete Edition (NINSP2.0)279.95

Nik Sharpener Pro 2.0 Inkjet and Complete Editions contain full filter functionality, including 16-bit compatibility, the Selective tool, and improved interfaces with the Advanced Panel.

Filter	Feature	Complete	Inkjet
Lab Photographic	Sharpening for Continuous Tone Output Devices, p.ex.: color laser and photo lab printers (Chromira, Lambda, Frontier, Lightjet)	✓	–
Photographic & Dye Sub	Sharpening for Continuous Tone Output Devices p.ex.: dye sublimations or if the type of printer is unknown	✓	–
Fuji-Pictography	Sharpening for printing on a Fuji-Pictography printer.	✓	–
Halftone	Sharpening for Halftone Output Devices, p.ex.: lithographic, gravure, flexographic or other printing process that uses an ordered dither halftone pattern	✓	–
Inkjet or Inkjet: (...)	Sharpening for Inkjet Output Devices for specific manufacturer	✓	✓
Display	Sharpening for Electronic Display Output Devices, p.ex.: monitors and projectors	✓	✓
Raw Presharpening	RAW Presharpening for RAW images	✓	✓



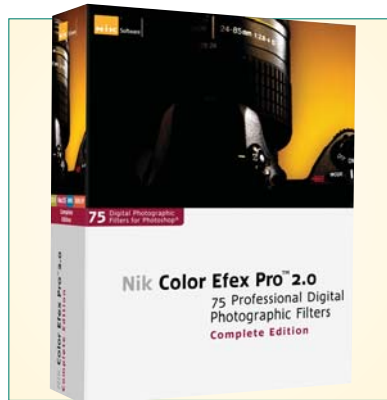
DFINE Digital Noise Reducer

Digital photography offers power, flexibility, and control. When capturing images, digital cameras create small, unwanted imperfections among image details known as 'noise'. Reducing noise while balancing image details, color, and light increases the quality of virtually every digital photo. A plug-in for Photoshop and Photoshop Elements, Dfine provides a wide range of options for reducing noise and optimizing detail in digital images. Using an easy-to-use four-step process, you can reduce varying types of noise and artifacts including luminance noise, chrominance noise, and JPEG artifacts. You can also enhance color and contrast in an image while considering the effects of the noise reduction process.

- ◆ Shoot your images, define details, and edit your images. Better digital images come from using the right tools at the right time. Prepare your digital images for the image editing process. Dfine your digital photos first and get better results.
- ◆ Dfine provides a wide range of options for reducing noise and optimizing detail in digital images. Using an easy-to-use four-step process, you can choose to reduce varying types of noise and artifacts including luminance noise, chrominance noise, and JPEG artifacts. You can also use a variety of features in Dfine to enhance color and contrast in an image while considering the effects of the noise reduction process.
- ◆ Dfine targets noise and unwanted imperfections that may be a part of your image and allows you to control and redefine image details. Perform noise reduction, JPEG artifact reduction, and enhance color and light to create better photographic prints.
- ◆ Selectively reduce noise using a range of predefined tools such as detail-specific brushes for sky, skin, and other types of detail. Take advantage of pressure-sensitive graphics tablet features, selectively apply print-optimized noise reduction, and more. For more control, selectively apply Dfine enhancements using camera-specific profiles.
- ◆ Dfine lets users analyze noise and image detail with a 'reveal' analysis mode, optimize noise reduction using camera-specific profiles, control the relationship of detail, noise, and color, customize image profiles for better digital workflow, and much more.
- ◆ Use the 'Quick Fix' pull-down menu to visually choose the noise strength present in your image, or use a custom camera profile to reduce noise for the type of camera you use.
- ◆ For added control, Dfine can be applied selectively to any image and incorporate pressure sensitive pointing device functionality, compatible with Photoshop and Elements.

Dfine 1.0 (NID): For Windows or Macintosh.....79.95

COLOR EFEX PRO 2.0



Digital Photographic Filters

Nik Color Efex Pro 2.0 photographic filters offer features and functionality that make digital photography easier and better. Color Efex Pro filters contain a proprietary advanced color treatment system for natural photographic enhancements, as well as being adaptive in their application, applying the enhancement based on the previous filters applied or changes to the image. This feature becomes increasingly important since applying filters in a different order will provide you with more control over your images, as well as more options for great, natural photographic enhancements. Available in three filter collections, Color Efex Pro 2.0 provides you with a wide range of filters and effects that make enhancing and transforming your images better than ever.

FEATURES

Nik Color Efex Pro 2.0 filters have all been updated to include more functionality and better features, along with more filters and effects. Some of these include:

- ◆ 16-bit functionality.
- ◆ The True Light Color Engine that provides even better photographic enhancements by preserving the relationships between color, contrast, and detail. The True Light Color Engine provides more natural film-like images and allows users to achieve far better quality enhancements, with more natural and photographic results.
- ◆ The Advanced Panel provides controls to adapt the filter's enhancement to enable it to protect the highlights and shadows in the image in order to provide higher quality effects and enhancements. Available only in selected filters, the Advanced Panel provides a histogram that enables you to identify potential problems in the image.
- ◆ Larger and expanded preview options.
- ◆ A Selective module that enables users to apply any filter quickly and easily to any part of an image, while taking advantage of pressure sensitivity when used with a Wacom tablet.
- ◆ A series of Reflector filters that controls and adds light similar to conventional photographic reflectors.
- ◆ Infrared conversion (Color, Black and White, and Thermal Camera).
- ◆ Cross Processing filters (both C41 – E6 and E6 – C41).

How the Nik Color Efex Pro 2.0 Filters Work



Nik Software utilizes leading digital photographic filter technology to create powerful and versatile photographic Photoshop plug-ins. Nik Color Efex Pro 2.0 filters use the True Light color processing system that considers the existing color and light information in an image automatically to provide optimal photographic enhancements.

Each Nik Color Efex Pro 2.0 filter adapts its effect based on the detail structures, colors, and contrast range of each image. By identifying

the unique qualities of the image that the filter is processing, each filter is able to achieve consistency across a range of images. This consistency provides greater productivity as the filters can be applied with the same settings across a wide range of images.

Nik Color Efex Pro 2.0 filters adapt to any previous filter adjustment or any other change made to the image to provide natural color and light enhancements. This feature becomes increasingly important since applying filters in a different order will provide you with more control over your images, as well as more options for great, natural photographic enhancements.

The combination of the True Light color processing system along with each filter's adaptive nature provides a truly unique system of controlling the light and color in virtually any image.

Color Efex Pro 2.0 Standard Edition (NINCEPSEQ)
For Windows or Macintosh**89.95**

Color Efex Pro 2.0 Select Edition (NINCEPSEIM3)
For Windows or Macintosh**199.95**

Color Efex Pro 2.0 Complete Edition (NINCEP2.0)
For Windows or Macintosh**249.95**



COLOR EFX PRO 2.0

Standard Edition

The Standard Edition includes 19 filters for a wide variety of photographic styles and enhancements. It provides key filters for color and light enhancements, including the Skylight, Midnight Blue, and the award-winning Sunshine filter. Filters in this edition offer a range of enhancement and stylizing options ranging from correcting colors and adding light, to creating a cinematic day for night effect and diffusing light in an image.

Select Edition

Select Edition includes all filters contained in the Standard Edition and adds 26 more for a total of 45 filters. Create a range of professional image enhancements and styles using the additional filters to:

- ◆ Create professional black and white conversions using the B/W Conversion filter. Determine how the conversion occurs using a color spectrum slider to define the tonality in the final black and white image.
- ◆ Apply a photographic soft focus effect using the Classical Soft Focus filter.
- ◆ Create dramatic blue sky scenery by applying Polarization filter to landscapes and skylines.
- ◆ Create soft and light diffused portraits and outdoor images using the Midnight filter.
- ◆ Control light in the image and the diffusion of light in details in the image using a few adjustment sliders.

Complete Edition

- ◆ Includes all 75 traditional and stylizing photographic filters. Choose from any of the filters to enhance virtually any image, or to create unique photographic styles in their images.
- ◆ Convert color images to traditional black and white infrared images using the Infrared: Black and White filter.
- ◆ Smooth skin details using the intelligent Dynamic Skin Softener filter. Choose the skin color to smooth and control the amount of smoothing being applied.
- ◆ Add light into the foreground of images using the Gold, Silver, or Soft Gold reflectors and control the direction, placement, falloff, and intensity of the light being added.
- ◆ Add fog to any image using a conventional fog filter.

Color Efex Pro 2.0 Filter List

▲ - Standard Edition ■ - Select Edition ● - Complete Edition

▲■● Brilliance/ Warmth	■● Darken/ Lighten Center	● Bi-Color Green/Brown
▲■● Burnt Sienna	■● Flux	● Bi-Color Moss
▲■● Contrast Only	■● Graduated Neutral Density	● Bi-Color Violet/Pink
▲■● Graduated Blue	■● Graduated User Defined	● Cross Processing: C41 to E6
▲■● Graduated Coffee	■● Infrared: Thermal Camera	● Cross Processing: E6 to C41
▲■● Graduated Olive	■● Ink	● Duplex: Color
▲■● Graduated Orange	■● Midnight	● Duplex: Monochrome
▲■● Midnight Blue	■● Midnight Green	● Dynamic Skin Softener
▲■● Monday Morning Violet	■● Midnight Sepia	● Fog
▲■● Old Photo: Black and White	■● Midnight Violet	● Foliage
▲■● Old Photo: Color	■● Monday Morning	● Graduated Fog
▲■● Pastel	■● Monday Morning Blue	● Indian Summer
▲■● Photo Styler: Cool Silver	■● Monday Morning Green	● Infrared: Black and White
▲■● Remove Color Cast	■● Monday Morning Sepia	● Infrared: Color
▲■● Skylight Filter	■● Paper Toner	● Pro Contrast
▲■● Solarization: Black and White	■● Polarization	● Photo Styler: Cool Ice
▲■● Solarization: Color	■● Pop Art	● Photo Styler: Copper
▲■● Sunshine	■● Remove Brightness	● Photo Styler: Russet
▲■● Weird Lines	■● Vignette	● Photo Styler: Varitone
■● B/W Conversion	■● Vignette Blur	● Reflector: Gold
■● Bi-Color User Defined	● B/W Conversion: Tonal Enhancer	● Reflector: Silver
■● Classical Soft Focus	● B/W Conversion: Dynamic Contrast	● Reflector: Soft Gold
■● Color Stylizer	● Bi-Color Brown	● Saturation To Brightness
■● Colorize	● Bi-Color Cool/Warm	● Stairs
■● Contrast: Color Range		● White Neutralizer
		● Weird Dreams

Rick Sammon Edition (NINCEPRSE)

The Nik Color Efex Pro 2.0 Rick Sammon Edition is a collection of 12 filters, hand picked by Rick Sammon. These 12 filters offer a wide range of professional photographic enhancements, from the B/W Conversion and Midnight Sepia filters, to the Vignette Blur filter, and the critically acclaimed Sunshine filter. In this collection Rick Sammon provides video lessons that include step by step instructions ranging from installing the filters to demonstrating how Rick uses some of the filters69.95

PXL SMARTSCALE

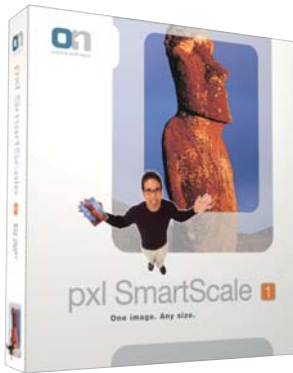


Image Scaling With Edge Controls

SmartScale is an image resizing plug-in for Photoshop that gives you extra control over how the edges of an image are treated as you increase the size and resolution. SmartScale will examine the image for edges before scaling it up. After the image has been rezzed up, SmartScale provides you with an opportunity to fine tune how the edges are treated as well as offering some built-in sharpening controls.

Because of its ability to fine tune edge details, SmartScale is best suited for images that have very distinct edges and when you want to reduce or eliminate the edge halos that naturally occur with interpolation methods such as bicubic or bicubic smoother.

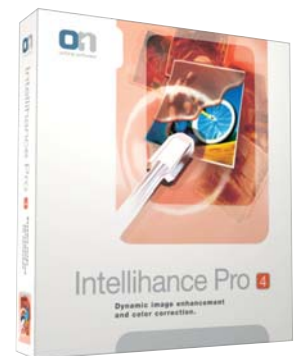
- ◆ No other scaling product offers SmartScale's powerful array of tools:
 - Interactive scaling – scaling made easy with intuitive tools, full screen preview and simple image navigation
 - Detailed scaling – refine the quality of your scaled image by controlling the overall sharpness, edge contrast and edge detail
 - Crop tool and Crop palette– easily and precisely crop images from within the SmartScale window
- ◆ Intuitive and easy to use. The powerful scaling technology is coupled with familiar floating/dockable palettes, traditional crop, magnification, and hand tools, along with a full screen preview, and easy image navigation.
- ◆ Because SmartScale is a true Photoshop plug-in, your workflow doesn't skip a beat. Seamlessly access all of SmartScale's powerful scaling features directly from your Photoshop application.
- ◆ Powered by the most advanced scaling technology available, SmartScale offers an easy, intuitive way to scale images up to 1600% with no discernable loss in printed quality
- ◆ SmartScale allows you to scale an image from a file on disk without ever actually opening the file in Photoshop, saving valuable processing time.
- ◆ You can password-protect any image you choose by saving it in as a protected file using the PixelLive file format.

pxl SmartScale (ONSS): For Macintosh and Windows139.95

INTELLIHANCE PRO

Dynamic Image Enhancement and Color Correction

Professional and enthusiast photographers alike use Intellihance Pro to enhance their photographs within Photoshop. Regardless if you have captured the image with one of the latest digital cameras or have scanned in a precious family photo, Intellihance Pro provides an easy, all-in-one dynamic image enhancement and color correction center. You can use any one of the 23 included presets to enhance your image or use them as a starting point to create your own preset that you can then use again and again in the future. You can even batch process several images at once.



- ◆ Intellihance Pro automatically analyzes and corrects images from any source, including digital cameras, flatbed and drum scanners, or original digital artwork.
- ◆ Award-winning technology analyzes and corrects each image individually for contrast and brightness, saturation, sharpness, dust and scratches, color cast and more.
- ◆ Interactively adjust any setting, including color, contrast, and sharpening.
- ◆ Use the Quick Enhance preset to analyze and fix an image with one click. Its batch processing capabilities fix a whole folder of images just as easily.
- ◆ Power Variations mode lets you interactively and visually adjust your images. Quickly change the incremental variance for adjusting your image.
- ◆ For finer control, you can adjust levels or curves, with a simple menu command.
- ◆ View a single image or up to 25 different variations to help you visually find the one that looks the best to you.
- ◆ Save your favorite combinations of settings for future use. It provides several presets for adjustments and digital camera options. Presets are available directly from within Photoshop for rapid batch processing.

Intellihance Pro 4.1 (ONIP)
For Macintosh and Windows159.95

PHOTOFRAME PRO 3



Stunning Border and Edge Effects

Sometimes, plain rectangular images need jazzing up with a custom frame or border. But making frames in Photoshop has always been a tricky process limited to advanced Photoshop users. Fortunately, an easier way has arrived. Now you can unleash your creativity to design unlimited high-quality image frames and borders for your images. Combine and customize any of the over 1000 natural and digital frames or create your own original frame. Experiment with edge effects, colors, blend modes, shadows, textures, bevels and much more to discover the perfect border for your photos.

FEATURES

- ◆ There are many ways to add border and edge effects manually using a variety of tools in Photoshop. Regardless the method, none are easier or more fun to use than PhotoFrame Pro 3. Whether you want something subtle, extreme or even a realistic looking frame and matte, there's no better way to add that perfect finishing touch to your photo than with PhotoFrame Pro 3.
- ◆ Quickly and easily create amazing edge effects that complement your image. Every effect and option in PhotoFrame Pro can be previewed in real-time. So when you're adding a subtle drop-shadow to your image like the one here, you can visually adjust it and get it perfect the first time.
- ◆ Can't decide which frame or effect looks best on your image? Frame Preview Grid allows you to select multiple frames from the Frame Browser and then preview them side-by-side with your image to see which one looks the best.
- ◆ Random Frame Generator automatically adds random frames.
- ◆ Combine up to 32 different frame layers to create a truly unique frame.
- ◆ Includes over over 4,000 frames and edge effects. You can also add a wide variety of traditional film borders to your digital photos. Combinations of these film borders with some of the popular emulsion frames to give you a very authentic look.
- ◆ Layer Mask Mode applies border effects directly as a layer mask.
- ◆ Save your favorite frames for fast and easy access in the future.
- ◆ Supports frame files from other edge effects plug-ins.

There is no shortage of options when it comes to customizing your border and edge effects within PhotoFrame Pro 3. Add a subtle drop shadow to your frame to make it stand off the page or go all out and add a bevel, glow, border and then apply a texture to your frames. How far you take it is up to you. The best part is you can preview all of your changes in real-time, so there is no guess-work involved. When you have found that perfect combination, you can even save it as a preset so you can quickly apply all of those settings to future images in a snap.

PRO DIGITAL FRAME BUNDLE

What's it like to have the pros at your beck and call? Find out for with the Pro Digital Frame Bundle. Now you too can get the same look as the pros and make your photographs stand out. The Pro Digital Frame Bundle includes nearly 100 custom-designed frames by some of the most respected Photoshop trainers of all time. Simply add all of these custom frames to PhotoFrame Pro or to expand your creative options and give your photographs an impressive professional touch.

- ◆ Packed with the creative genius of six talented photographers and Photoshop experts into one box! The Pro Digital Frame Bundle includes over 100 new frames and presets for PhotoFrame Pro.
- ◆ Over 100 custom-designed frames by some of the most respected Photoshop trainers of all time:
 - Helene Glassman, a Brooks Institute Alumnus and president of the Photographic Professionals of Santa Barbara County.
 - Jim DiVitalo has been a photographer and instructor for over 25 years, and over the last 12 years he's specialized in digital photography and illustration for agencies across America.

- Jack Davis is best known as the co-author of the "How to Wow" series of books. Jack is also an award-winning designer, photographer, and internationally recognized creative spokesperson on digital imagery. Recently inducted into the Photoshop Hall of Fame for his lifetime contributions in the field of education.
- Rick Sammon, author of 27 books, has been totally digital since his trip to Cuba in 2000. Instant Film Frame Collection
- Vincent Versace's work is part of the permanent collection of the Smithsonian Institution's Museum of American History.

PhotoFrame Pro 3.0 (ONPF3)149.95 Pro Digital Frame Bundle (ONPDFB) 99.95

GENUINE FRACTALS 5.0



The Standard for Image Resizing

For extraordinary image enlargements and greater flexibility in working with digital images, Genuine Fractals is the preferred software of professionals. An indispensable tool for photographers, graphic artists, digital image publishers and photo studios, Genuine Fractals can generate enlargements of any size from medium or high-resolution digital images without any degradation in image quality. Furthermore it creates high-quality, print-ready enlargements yet saves files in a small, space-saving format for easy archiving and file transfers.

The latest version features an improved user interface, Photoshop CS3 compatibility, improved scaling algorithm and scaling performance, additional file format support and improved batch

processing support. It also has built-in sharpening tools and film grain controls.

For those who work in a strict CMYK color workflow and need to increase the resolution of your images, OnOne offers Genuine Fractals Print Pro which, in addition to supporting RGB and Grayscale images, adds support for scaling CMYK images.

FEATURES

Superior Enlargements

- ◆ The fractal technology found in Genuine Fractals 5.0 enables you increase the resolution of images and digital photos shot using a digital camera or scanner giving you sharp image enlargements. Use the preview window to save time and get the encoding result you want the first time. The patented scaling algorithm has been improved to deliver even better results than before.
- ◆ Convert any file format image to Genuine Fractals' scalable, resolution independent format and save storage space of up to 100% for lossless and 500% for visually lossless. Save money by scanning at lower resolutions and later scaling up with Genuine Fractals. You can scale an entire image or easily crop and scale a specific area of interest within an image.
- ◆ Fully supports multi-processor computers such as dual processor and dual core computers as well as Altivec and SSE acceleration to deliver superior scaling results faster than ever before.
- ◆ Resize or crop your digital camera or scanned image within Genuine Fractals 4.0 to reframe and eliminate unwanted areas then scale up your image up to 600%. Genuine Fractals enables you to increase the resolution and size of your images without degrading the image quality. Choose any print resolution for desktop, large format or offset printers. Easily output the same file at several resolutions for diverse applications.

Repurpose Your Images

- ◆ After you increase the size of your digital camera and desktop scanner output, you can print the results on your desktop or wide format printer or an offset press. If your megapixel digital camera images look great at 4x5 but you want an 8x10 or 16x20, Genuine Fractals can make the enlargement look as sharp as the original. If you're working with 15-18MB digital camera-back or desktop scanner captures, you'll be amazed at the quality of the output at 200-300MB and larger. Regardless of your image source, Genuine Fractals enables your images to be easily repurposed from one job to the next.

With Photoshop

- ◆ Genuine Fractals gives Adobe Photoshop "resolution on demand" that lets you output any file size from a single encoded file. It provides four methods for encoding and three rendering solutions for the ultimate in image flexibility. Genuine Fractals enables you to work in, store, and transmit smaller, more manageable files. Furthermore, Genuine Fractals provides easy encoding and rendering for all RGB (8- and 16-bit), multi-channel, and grayscale images (8-bit only).
- ◆ In addition to being compatible with Photoshop CS3, Genuine Fractals 5.0 has been rewritten as a Universal Binary to be fully compatible with both PowerPC and Intel-based Macintosh computers.

Output Options

- ◆ Two image modes allow you to save files for the best output quality or greatest storage efficiency. When saving an image, you can choose Lossless, which creates a file about half the size of the original and can be opened exactly to its original size with absolutely no loss. Or, you can choose Visually Lossless, which creates a file an average of one-fifth the original size and still produces excellent quality enlargements.

Additional Features

- ◆ Gives users the option to add sharpening to a file during the scaling process. Users will have control over the amount of sharpening that is applied and get a preview of the sharpening results before the one step scaling and sharpening process.
- ◆ Add simulated film grain after a file has been scaled. Users will have control over the amount of film grain that is applied and get a preview of the results; and it can be combined with the new sharpening controls if desired.
- ◆ Improved batch processing support for scaling multiple files in one step.

Genuine Fractal 5.0 (ONGF5)Call

MASK PRO 4



The process of masking or isolating an object from its surroundings is easy for most photographers and graphic artists to understand, however, in a real world image filled with overlapping colors and shapes, professionals need powerful algorithms like those in Mask Pro 4 to help them keep up with the demands of a busy workflow.

Mask Pro 4 provides a complete collection of Photoshop plug-in tools that allow unprecedented flexibility when tackling the most challenging masking job. Using the concept of “keep colors” and “drop colors” chosen by the user, Mask Pro removes only those selected colors from an image. Plus, when a “drop color” is found in another pixel, Mask Pro will remove only that color value from the pixel, leaving that pixel (or pixels) semi-transparent. This allows Mask Pro to minimize the edge halo effect often seen when masking a transparent object or edge.

Mask Pro makes it easy to create masks, selections and clipping paths on difficult subjects like hair, glass and fog. Mask Pro 4's tool-box lets you use the right tools for different parts of your image and lets you see and refine your mask in real-time. Replacing backgrounds is now a snap. In addition, recognizing that masking digital images can be a time-consuming task regardless of the tools used, Mask Pro 4 focuses on teaching users how to effectively complete a masking job through built-in training videos that detail how each tool works and when to use it.

FEATURES

- ◆ Support for Wacom Pen Tablets including pressure sensitivity. The harder you press on your tablet, the harder the edge you'll get in your mask. Press lightly and you'll get a nice soft edge. With Mask Pro 4 and Wacom, masking has never been easier!
- ◆ Masking images that contain hair can be tricky and often frustrating. With Mask Pro 4, you can easily create a mask that preserves the details you want and even removes unwanted ambient color contamination. To effectively mask hair, define colors in the hair as “Keep Colors” and then define colors in the background as “Drop Colors”. Then use the Magic Brush and brush over the hair to paint away the background.
- ◆ Provides you with two options for masking. For images where you need to mask a transparent item, use the standard Mask Pro mode and you can mask any image using the simple method of choosing colors to keep and colors to drop. Unlike other methods where you make a selection and then hope for the best, Mask Pro 4 provides you with real-time previews, so there is never any doubt as to the quality of your mask.
- ◆ The Color Decontamination technology built-in to Mask Pro allows you to mask difficult subjects like glass, lace and smoke with ease. Simply choose colors to keep and colors to drop and Mask Pro does the rest.
- ◆ Navigator windows allow users to see several views while masking a subject. The different views include a composite mode so users can see the new background appear as they mask allowing them to make immediate decisions on their mask and an Alpha channel view so they can see in black and white (and grey) how their mask will look.
- ◆ When you just want to make a selection, you can use the advanced selection tools in Mask Pro Select to give you a high-quality selection and clipping path. The vector-based clipping paths ensure superior print quality and will quickly rip on any imagesetter.
- ◆ In any given image, you may need more than one tool to get the job done. So Mask Pro provides a complete collection of tools that let you take on the toughest masking project. Includes tools such as the Magic Brush which will remove colors while maintaining transparency as well as touch up. Chisel which will help you get the edges of your image perfect without any edge halos at all. Each tool includes a palette where you can quickly and easily adjust the tool settings.
- ◆ Keep/Drop detail view showing users the exact color values selected by the Keep & Drop Highlighters.



LUMIQUEST *Ultra Image*

A powerful suite of actions designed to simplify image enhancements in Photoshop with a few clicks of the mouse. It automates sophisticated, professional Photoshop image processing that would take years to learn and hours to execute. Images can be processed and prepared for a variety of application alternatives in a matter of seconds. Subject specific programs include those for landscapes, portraits, product shots, weddings and more.

Resize and prep images for web or print applications.

Camera specific version for Canon, Nikon and Fuji digital cameras are available to maximize image quality with regards to noise, color, sharpness and tone range.

Ultra Image Software - Optimized for Nikon Digital Cameras (LUUIN).....	59.95
Ultra Image Software - Optimized for Canon Digital Cameras (LUUIC).....	59.95
Ultra Image Software - Optimized for Fuji Digital Cameras (LUUIF).....	59.95

DG FOTO ART

Digital Album Creation Tool



The digital revolution has opened up many possibilities and options to redefine the way we think.

This phenomenon is also true when it comes to designing photo albums. So, why not get the digital advantage and come out of the same mundane looks of conventional photo albums? A fast and easy digital album creation tool, Dg Foto Art helps you create designer albums for the premium customer who demands the world. Dg Foto Art helps you increase productivity and make big profits because of its ease of operating and the numerous templates, decors and tools it comes bundled with. Dg Foto Art is complete and stand-alone software requiring no third party tools nor any artistic skills for creating exclusive album pages within minutes. So if you are looking to capture the beauty of a wedding, the fun of a family vacation or any other occasion and to preserve these precious memories in a digital way, Dg Foto Art gives you incomparable tools - all guaranteed to help you produce exclusive and stylish album which will be cherished for a lifetime.

To cater to the different needs of photographers, Dg Foto Art is available in three versions:

Dg Foto Art - Lite: This unique no frills solution has been specially created to enable album creation in minutes.

Dg Foto Art - Classic: Fast and easy album creation tool with an array of tools for creating personalized digital pages.

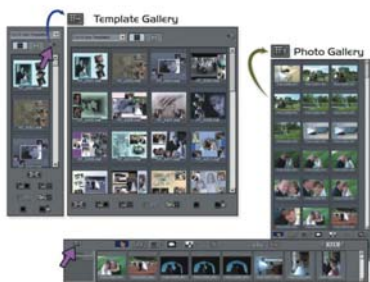
Dg Foto Art - Gold: The most comprehensive solution for creating digital album pages, a complete album creation suite.

FEATURES

General Features

- ◆ They support all the standard file formats like TARGA, JPG, BMP, TIF and almost all the graphic formats except RAW and PSD.
- ◆ In the Color selection dialog, a color picker tool enables selection of any color from the screen. The selected color can be applied to backgrounds, outlines, shadows, shapes and text. Flawless blending of colors using this feature makes the pictures look real.
- ◆ Additional compose features like Center lines and Rulers are added assets to the software. While making a panoramic album, reference of these guide lines can be taken to avoid misplacement of the objects on the template page. The guide lines intersect horizontally and vertically at the exact center of the current page. The rulers can be set to either centimeters, or inches as per requirements.
- ◆ Order of the created template pages can be rearranged by moving the thumbnail of the template pages with the page numbers automatically assigned after reordering thereby saving time.
- ◆ The Auto Save feature automatically saves the current page and updates its thumbnail in the story board, the moment a new page is opened. Thus, no worries about any unforeseen event. At regular intervals the work is saved and thus there is no risk of losing important data.
- ◆ Gallery photos already used in the album get marked distinctly with a red outline. Ideal for tracking usage of the photos.
- ◆ Multiple pages can be viewed and worked on at the same time thus giving you the exact feel of the album that will be printed. It will also save a lot of time and gives more scope for systematic design planning.
- ◆ Story board enables viewing of the innumerable thumbnails of the created template pages for a project. Story board option gives a vivid idea about the templates already designed and also helps maintaining the story line of the album.
- ◆ The project files created in Dg Foto Art are small in size, thereby saving a lot of hard disk space. This also enables your projects to open and save very quickly. Project files are uncomplicatedly transferable to clients as it is easy to handle small files.

On Board Thumbnail View and More



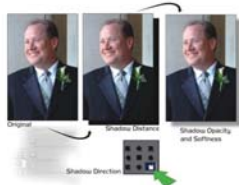
DG FOTO ART

Compose Features

- ◆ They give you an extensive collection of ready made templates of various sizes designed for different occasions. These templates can be used to make the page look more elaborate for the occasion.
- ◆ Templates can be customized to sizes in centimeters, inches or pixels and print resolution too. So depending on the size requirements of the customer the pages can be sized.
- ◆ Design your own or modify existing templates with great ease quickly. These templates give wider choice while making brochures, albums, calendars, etc.
- ◆ Thumbnail view of the Objects and Template pages is available.
- ◆ Select pictures of multiple sizes at a single selection and make the photos align linearly or set them at equal spacing automatically and quickly. Very useful while designing a multi-photo album page.

Enhance Features

- ◆ Apply drop shadows, set a shadow direction, shadow distance and add opacity to it with this feature. Try this option to give a different look to your images.
- ◆ Add outlines to photos in the template pages instantly.
- ◆ Any photo selected in the photo gallery can be set as the background. The Photo background can further be manipulated to suit requirements. Changing backgrounds can give an entirely new look to the image without having to alter designs.



Editing Features

- ◆ They allow instant cropping of any picture within a Frame or otherwise. This is done at just the click of the mouse.
- ◆ With a rich text editing tool you can instantly add texts to the template pages by using any true type fonts. Effects like drop shadows, outlines, textures, and thickness can also be applied on the text.

Decorate Features

- ◆ Add eye-catching clip arts, borders, masks, textures and filters from its huge library. Use these existing elements in the library to spice up the album pages and minimize the efforts of designing or building new designs for specific themes.
- ◆ Seven ready-to-use tones including B&W and Sepia can be applied instantly on any photo at the click of a button. This is an instant effect that can change the whole look of a photo without using any specific designs.

Export/Print

- ◆ Multiple pages of a project can be exported simultaneously, thus saving time. One can even select or deselect the pages to be exported with help of thumbnail. The instant action of exporting multiple pages makes the process simple and fast. Flat images in standard graphic formats like JPEG, TARGA, TIF etc. can be exported without any difficulty. It also allows you to customize the export DPI as per choice for sharing these flat images with friends and relatives via internet.

DG FOTO ART DEZIGNER

Dg Foto Art Dezigner helps photographers create Dezigner albums for their premium customers who demand the world. Dezigner is complete and stand-alone software requiring no third party tools or any artistic skills for creating impressive album pages within minutes. So if your customers are looking to capture the beauty of a wedding, the fun of a family vacation or any other occasion and to preserve these precious memories in a digital way, Dezigner gives them incomparable tools all guaranteed to help them produce exclusive and stylish album which will be cherished for a lifetime

- ◆ Offers an exhaustive collection of more than 1000 ready-to-use templates of various page size and festive season, for your customers to start working right away.
- ◆ Customization of page size for making albums, calendars, simple brochures very quickly. One simply needs to alter the ready to use templates with own design ideas or simply create own from scratch.
- ◆ Offers a unique story board which displays thumbnail image of the template pages created for a project, this story board gives a clear idea about the templates designs already used in the project and also helps maintaining the story line of the Album.
- ◆ Can read photos which are scanned or clicked digitally. Simply drag the photos from the gallery of thumbnails and drop it on the template pages. It also provides an indication to differentiate the used photos with the un-used in the current project.
- ◆ Range of onboard Photo editing tools like Blur, Softness, Opacity and Feather. Perform color correction and apply preset tones like Sepia, B&W with a click of a button. Modify the Preset tones and save them for future use in other albums.
- ◆ Work on two adjacent pages simultaneously. This feature is very useful for giving finishing touches and to match the theme of the adjacent pages especially when these pages are used in premium photo albums.
- ◆ Resize, crop, rotate a photo to customized size or angle respectively to suit the requirements of your customers
- ◆ The Photo Enhancement tool allows enhancement of a certain portion of the photograph to make it stand out from the rest. The Lasso cutting tool can be used to knock off unwanted portions of a photo.
- ◆ Huge library of decor like Borders/Frames, Masks, Clipart, Titles, etc. for giving a Dezigner look to the album pages.
- ◆ Automatically resize the selected template page to fit in defined project page size without affecting the look and feel. Any Borders and Masks applied on photos get automatically resized in a similar way.
- ◆ Ready to use shapes like rectangle, ellipse, rounded rectangle and lines to add creativity to the created pages. Apply outline with colors and fill these shapes with color, texture or gradient. Opacity and shadow effects can also be applied.

Dg FOTO ART

Dg Foto Art - Classic Step-up Features

- ◆ Selected template of any size can be used to set up digital pages in user defined sizes, with automatic resizing of the template elements, without compromising the look and feel of the original template.
- ◆ Auto Resize lets you automatically change the size of your current project maintaining the original look and feel of the original project.
- ◆ Resize and rotate photos instantly with onboard control. While rotating, the angle of rotation is also displayed on board. You can also flip images horizontally or vertically.
- ◆ Properties of a photo can be instantly applied over any other photos repeatedly. This feature is very useful for application of favorite tones, masks or filters to multiple photos. These properties include applied masks, borders, tones and almost all the special effects applied on the photo.
- ◆ Favorite photos and templates frequently used in the album can be kept separately for quick access. Exploring through huge folders of images can be evaded.
- ◆ Provide a decorative look with huge collection of ready shapes like rectangle, ellipse, rounded rectangle and lines to add creativity to your pages. Outlines can be added to define these shapes and colors to intensify them.
- ◆ The unique lasso tool removes unwanted portions of a photo for replacing the background. A feather is also applied automatically around the edges of the cutout portion.
- ◆ Enhance selected portion of a photo and color-correct it instantly. Multiple selections can be made and manipulated independently.
- ◆ The unique slide show generator creates a self running file (EXE) containing slides of the template pages created. This file being small in size can be easily sent as e-mail for customer's approval before printing. The need of personally visiting the customer and making presentations can be avoided.

Dg Foto Art - Gold Step-up Features

- ◆ Templates already used in the album get marked distinctly with a red outline...a very useful feature for tracking usage of the Templates.
- ◆ Offers innumerable guidelines for accurate composing. Guidelines can be made to appear universally across all of your template pages. This brings out fineness in your design work and avoids confusion.
- ◆ The selected object's position on screen with respect to the Ruler is displayed on board. Hence more accuracy and precision in placing of your objects to give them a professional look. There is less difficulty in designing or modifying the object.
- ◆ Flip templates with a click of a button. A very useful feature while arranging your template pages in an album.
- ◆ Remove image imperfections with the clone stamp tool. Your image imperfections will easily blend against the cloned area and make it appear flawless.
- ◆ PXL editor with innumerable edit options makes handling images easy, rectifying the minutest flaws and controlling photo exposure and factors like auto levels and auto contrasts too.
- ◆ Adjust color tones of a photo by using the Levels feature. Correct the color intensity of the photos by altering the tonal range of the image.
- ◆ Alter the color tones of an image by changing the shape of the curve in the Curves dialog box. Using this ready option you can quickly change the color tones of the image as per requirement.
- ◆ Contrast and color of an image can be adjusted using the Auto Color command by searching the image to identify shadows, midtones, and highlights, thus making the image look more effective.
- ◆ The Auto Level control automatically adjusts the black point and white point in an image. With Auto Level increase the contrast in an image with the pixel values being expanded especially in images with an average distribution of pixel values that need a simple increase in contrast.
- ◆ Auto Contrast control can be applied to adjust image contrast automatically. Auto Contrast improves the appearance of many photographic or continuous-tone images especially on an improperly scanned image.
- ◆ The Magic Wand tool lets you select a colored area without having to trace its outline. This is an extremely important tool for knocking off a chroma background from the photos.
- ◆ The positions of two selected photos or objects can be swapped at a single click. Efforts of dragging and dropping the images at respective places can be saved.
- ◆ Built-in color correction capability lets you perform color correction with RGB and CMYK tool.
- ◆ Easily transform images with the X & Y Rotation feature
- ◆ Add pizzazz to your creations by the Glow effects. Make a complete image transform by applying this feature.
- ◆ Add Inner, Outer and Center Outlines all together on photos instantly.
- ◆ PXL Viewer is your bundled organizer that helps you to view the exported pages in actual pixels. Quick fix the photos or exported pages here through PXL Editor.
- ◆ Get an index print of the album pages created by you with the help of PXL ThumPrint ...a module within the PXL viewer. This gives a guide list of all the available pages created. You don't have to go through each page to get to the desired page.
- ◆ Send your creations to a desired ftp server to get the whole album printed without leaving your desk. This is a very useful feature when you have clients spread remotely all over.
- ◆ Share template pages with your customers via e-mail using the PXL Mailer. No need of an additional mailer software. Get it done all here! Design and instantly send your template pages to customers at a click.
- ◆ PXL converter converts files created in Dg Foto Art - Gold into standard print formats ready for printing.

DG FOTO ART

		Gold	Classic	Lite	Dezigner
ALBUM:	Stand-Alone Software	✓	✓	✓	✓
	Customized Page size	✓	✓	✓	✓
	Rearranging Template Pages in Sequence	✓	✓	✓	✓
	Working on Multiple Pages	✓	✓	✓	✓
	Import Pages from other projects	✓	✓	--	✓
	Picture as background with Single Click	✓	✓	✓	✓
	Instant Mask or Frame on any picture	✓	✓	✓	✓
	Smallest Project size	✓	✓	✓	✓
	Page Split option in Export	✓	✓	✓	✓
	Resizing Pages in Album	✓	✓	--	✓
	Save Favorite Photos	✓	✓	--	✓
	Saving Customizable Templates	✓	✓	--	✓
	Center Fold Option	✓	✓	--	✓
	Instant Swap Photos	✓	--	--	--
	Instant Flip Template	✓	--	--	--
	Used Photo Indicator	✓	✓	✓	✓
	Used Template Indication	✓	--	--	--
	Used Photo Indication in Import	✓	--	--	--
	Auto Saving Pages	✓	✓	✓	✓
	Supports BMP, JPEG, TIF, TARGA, GIF, PNG, MGF Format	✓	✓	✓	✓
Replicate Properties	✓	✓	--	✓	
EDITING:	Crop	✓	✓	✓	✓
	Text Editing	✓	✓	✓	✓
	Lasso Tool with Auto Feather	✓	✓	--	✓
	Ready Tones like B&W and SEPIA	✓	✓	✓	✓
	Create & Save Own Tones	✓	✓	--	✓
	PXL Editor-Levels, Curves, Color Correction	✓	--	--	--
	Built-in Magic Wand	✓	--	--	--
ENHANCEMENT:	Enhancement Tool	✓	✓	--	✓
	Drop Shadows	✓	✓	✓	✓
	Advanced Color Correction	✓	--	--	--
	Glow Effects	✓	--	--	--
	Clone Stamp Tool for Touchup	✓	--	--	--
	Instant Rotation around X & Y axis	✓	--	--	--
	Brightness, Contrast, Gamma, Sharpness	✓	✓	✓	✓
	Ready Shapes	✓	✓	--	✓
LIBRARY:	More than 1000 Ready to use Templates	✓	✓	✓	✓
	Huge library of Borders, Masks, Clipart, Backgrounds etc.	✓	✓	✓	✓
ORGANIZE & SHARING:	Inbuilt Slide Show Generator	✓	✓	--	✓
	Inbuilt Picture Viewer (PXL Viewer)	✓	--	--	✓
	Instant Standard Format Converter	✓	--	--	--
	On Line Emailing (PXL Mailer)	✓	--	--	--
	Inbuilt FTP Support (PXL FTP)	✓	--	--	--
	Inbuilt Index Printing (PXL ThumPrint)	✓	--	--	--
OUTPUT CAPABILITIES:	JPEG, TIF, BMP, TARGA, GIF, PNG, MGF	✓	✓	✓	--
	PXL (JPEG), PXL (TIF)	--	--	--	✓
	Customize DPI	✓	✓	✓	✓
COMPOSE:	Alignment Options	✓	✓	✓	✓
	Maximize Photo Gallery	✓	✓	--	✓
	Maximize Template Gallery	✓	--	--	--
	Customized Guide Lines	✓	--	--	--
	Online Object Position indicator	✓	--	--	--

DG FOTO GALLERIA

Dg Foto Galleria is a creative template collection for Dg Foto Art that includes exclusive designs and decors like frames, masks, background and clipart, to cater to different occasions of life, organized under various categories. By using these Designer templates, you are guaranteed to produce exclusive and stylish digital albums to be cherished for a lifetime.



Wedding:
Wedding Vol. 5



Wedding:
Wedding Vol. 5

Wedding

DG Foto Galleria - Wedding Vol. 1 (PXDFGW1): A volume of wedding templates that beautifully enhance photos. It has assets like flowers and dry leaves, backdrops like textured, black-and-white, and faint backgrounds oozing out warmth of the couple. These templates closely depict emotions experienced in the past**69.95**

DG Foto Galleria - Wedding Vol. 2 (PXDFGW2): A collection of templates targeted towards giving an old-effect to photos. Monochrome effects can be matched with elements like flowers, jewelry, champagne bottles and glasses, musical instruments, and different textures. Templates help you design memories suitable to for a wedding.....**69.95**

DG Foto Galleria - Wedding Vol. 3 (PXDFGW3): Focusing specifically on couple close-ups, these templates are crafted for those who prefer a close look at their fondest moments. Besides close-up photographs, provide your customers a wide range of reinforcing components like colored and textured backgrounds that form a much significant aspect.....**69.95**

DG Foto Galleria - Wedding Vol. 4 (PXDFGW4): Add many different flower patterns to your album. This volume is full of backgrounds with bright and natural flower petals, different flowers and many flower-related themes with light and pleasant color combinations.**69.95**

DG Foto Galleria - Wedding Vol. 5 (PXDFGW5): Give a story-like appearance to your album. Special backgrounds depict moments like courting days, first date, marriage, honeymoon, first baby and other special moments. Elements like autumn leaves, sandy textures, and open fields help to create required effects.....**69.95**

DG Foto Galleria - Wedding Vol. 6 (PXDFGW6): This volume shows the fun and frolic of the wedding, combined with a stroke of emotion. Mainly dance-related backgrounds, along with others like flowers and beaches for the emotional touch. Wine and champagne glasses in the background highlight the fun**69.95**

Celebration

DG Foto Galleria - Valentine Vol. 1 (PXDFGV1): A collection of specially designed templates with a Valentine's Day theme. It features decorative components such as hearts, roses, textures and well-set backgrounds do the rightful contribution. Other elements such as jewelry, flowers, open green fields etc. also steal the show**69.95**

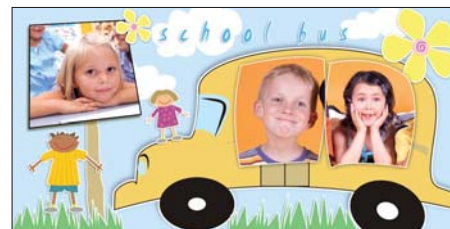
DG Foto Galleria - Anniversary Vol. 1 (PXDFGAI): Featuring modernized templates, this collection houses elements like flowers, dry leaves, champagne glasses and textured, black-and-white, faint backgrounds. Natural backdrops like beaches add liveliness while spotlighted photographs of the couple give an outstanding look to the album**69.95**

School

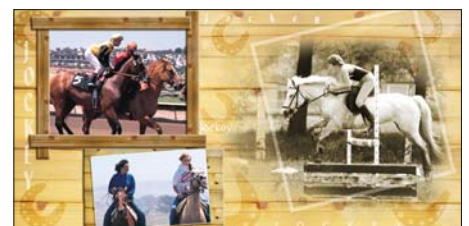
DG Foto Galleria - School Days Vol. 1 (PXDFGSC1): School days are formative days of fun, pranks, discipline and dedication. This volume includes templates for all age groups. Backgrounds are textured and are designed in sync with the theme. Clipart such as toys, flowerpots, pencil, butterfly, bee, school bus, fish etc. are used in the templates.....**69.95**

DG Foto Galleria - Fun Vol. 1 (PXDFGF1): Preserve your irreplaceable moments uniquely. This collection offers vibrant colors, textures, lively clipart and warm backgrounds. Loud background colors go hand-in-hand with clipart like dolls, bees, animal-faces, clown caps, buttons, clouds and sun, stars, slates, flowers and funny toys.....**69.95**

DG Foto Galleria - Sports Vol. 1 (PXDFGSP1): A collection of school sports-themed templates. A variety of frames like film-strip frames, wood frames etc. enhance the quality of the album. Clipart such as football, sports-shoes, ice skates, tennis ball, trophies, horse-shoes, and inspirational quotes are included.....**69.95**



School:
School Days Vol. 1



School:
Sports Vol. 1

DG FOTO GALLERIA

Portraits

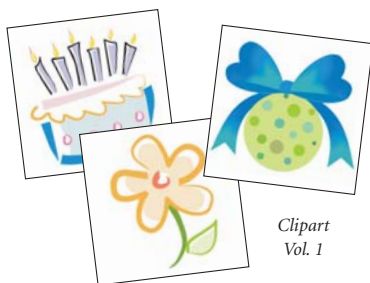
DG Foto Galleria - Abstract Vol. 1 (PXDFGAB1): This collection features borders with an abstract page-open theme. The templates implement single-photo, rip-opened pages. Additionally, elements like flowers, jewelry and textured backgrounds like wall textures, and handwriting textures allow you to exhibit your photos with flair69.95

DG Foto Galleria - Antique Vol. 1 (PXDFGANT1): Designed with an antique look and feel, this collection provides a whole range of vintage effects. Effects include crumpled effects, monochromatic effects, torn-edge effects, blurred and distorted edges effects. These effects give a brand new look to the album with antique finish.....69.95

DG Foto Galleria - Contemporary Vol. 1 (PXDFGCO1): An assortment of frames, backgrounds and colors that give a contemporary look. Frames such as notepad frames, woven frames etc. and sophisticated colors brighten the look of the templates. Vertical page rip-open and single-photo theme uniquely exhibit each photo in the album69.95



Portraits:
Abstract Vol. 1



Clipart
Vol. 1



Portraits: Contemporary Vol. 1

Holidays

DG Foto Galleria - Holidays Vol. 1 (PXDFGHO1): Holiday memories are often life's happiest moments. This collection features templates with themes relating to major holidays including Easter, Christmas and Halloween. Non-denominational themes showing general Spring and Fall holiday themes are also included69.95

Clipart

DG Foto Galleria - Clipart Vol. 1 (PXDFGCL1): In an album, where memories are preserved for years, colors and designs help to convey your feelings. This collection gives you a wide choice of clipart specially designed for all kinds of occasions like birthdays, New Year celebration, child birth, and weddings.....69.95



Masks: Horizontal Vol. 1



Masks: Vertical Masks Vol. 1



Frames:
Contemporary
Vol. 1

Frames

DG Foto Galleria - Abstracts Vol. 1 (PXDFGAB1): Easily add professional borders and frames to your photos. The frames in this collection feature an abstract look that uses varying colors, shapes, brush strokes and textures to create a unique abstract look69.95

DG Foto Galleria - Antique Vol. 1 (PXDFGBAN1): Quickly add antique borders and frames to your photos. Effects like rustic imagery, envelopes, pens, flowers, cards, rose petals, pile of books, and fortress windows lend an old-fashioned look to the templates69.95

DG Foto Galleria - Contemporary Vol. 1 (PXDFGBCO1): A fun-based contemporary theme to brighten the peppy moments spent with kids. Cartoonish templates are perfect for framing birthday, family picnic, and party pictures. Templates filled with water color effects are outlined for better impact and expression. Fresh colors enhance the sunshine moments and stay fresh in your minds for years to come.....69.95

Masks

DG Foto Galleria - Horizontal Vol. 1 (PXDFGMHO1): This collection allows you to quickly add professional masks to your photos, making it an excellent choice for professional photographers. These templates are designed for horizontal placement of photos. Dress your photos with the many different mask template styles and shapes69.95

DG Foto Galleria - Square Masks Vol. 1 (PXDFGMSO1): Featuring a wide variety of square masks with multiple effects, this collection of Square Mask templates offers many different designs and effects, which will make the photo inside the mask shine. This collection outshines conventional techniques, and will make your album sparkle.....CALL

DG Foto Galleria - Vertical Masks Vol. 1 (PXDFGMVO1): A collection of vertical masks that provides an extensive range of designs matching the vertical arrangement of photos. These effects will make each individual photograph appear as a unique piece of work. Special effects such as a leaf and water-drop masks make the album especially aesthetic.....CALL

CAPTURE ONE

RAW Workflow Software for Professional Photographers

Recommended by professional photographers around the world, Capture One LE and Capture One Pro allow you to load in the RAW files from most DSLR cameras, and convert them into TIFF or JPEG images on-the-fly. With only a few simple steps, the intuitive Capture One RAW workflow guides you through image editing and enhancement to produce exceptional quality images with exquisite detail, accurate colors and virtually no noise. And now, with version 4, Capture One is faster and more efficient than ever — no less than 300% faster. A few of the more significant enhancements available in Capture One Pro include conversion to TIFF-CMYK, Before and After preview, custom color profiles, as well as simultaneous output to multiple sources.



FEATURES

- ◆ Designed and optimized in terms of speed, tool performance and output quality to handle the next generations of high resolution digital cameras (50+ mega pixel).
- ◆ Enhanced RAW processing algorithms to ensure “best in class” image quality.
- ◆ Fast image import with easy image tagging and sorting.
- ◆ Camera profiles for many popular digital cameras from Canon, Nikon, Fuji, Olympus, Pentax & Konica-Minolta.
- ◆ Customizable user interface and multiple preview modes, including full screen and tiled side by side modes.
- ◆ Contact sheet option for easy viewing and distribution of images.
- ◆ Real time adjustment and preview of all parameter changes; detailed histogram.
- ◆ Flexible white and color balance adjustment, including multiple tone response curves.
- ◆ Visual exposure warning; exposure compensation ($\pm 2.5EV$); contrast and saturation correction; level/curves adjustment.
- ◆ Sharpening and noise suppression tools; plus a tool to efficiently suppress digital banding.
- ◆ All image and adjustment changes are stored for later use, even RAW Conversion settings can be archived and restored. Settings can be instantly applied to all image files.
- ◆ QuickProof for fast image generation.
- ◆ Background processing, Unlimited batch processing.

Capture One Pro Adds –

- ◆ Before/After preview for fast comparisons of image adjustments.
- ◆ Advanced image editing capabilities include custom color profiles, arbitrary rotation, and alignment guides for easy image composition.
- ◆ Capture One Pro lets you define and apply creative styles to your images.
- ◆ Supports multiple simultaneous output formats and sizes.
- ◆ Color Moiré suppression tools combat the distortion found in digital images that can affect the appearance of tight patterns, such as textiles. (Mac only - Supports select Phase One digital backs).
- ◆ RGB and CMYK soft proofing and output.
- ◆ Cross platform compatibility within the same license and two activations per license.

Capture One LE: For Macintosh (PHCILEM) and Windows (PHCILEW)79.95
Capture One Pro: For Macintosh and Windows (PHC1P)CALL

TRIBECA IMAGING LABS

DCF Full Spectrum Color

Full Spectrum RGB is a digital color model that expands the spectral capabilities of your digital camera. This unique technology allows you to instantly reproduce all the colors of the visual spectrum in your digital images. Digital Fact: The digital spectrum is incomplete and cameras cannot reproduce colors accurately.

- ◆ DCF Full Spectrum improves camera color accuracy with no changes made in exposure or contrast. DCF Portrait improves color accuracy with a reduced contrast ratio, thereby creating smooth skin tones. DCF Vivid improves color accuracy with more intense lighting for bolder colors, brighter highlights and deeper shadows.
- ◆ Adjust chromaticity of a selected hue; increase or decrease intensity; or combine the color and lighting effects to create a unique photographic appearance.

DCF Full Spectrum Color for Windows & Mac (TRPSP)49.95

GRAPHIRE4

Pen Tablet

The Graphire pen tablet gives you the control you need to quickly and easily edit your digital photos. Draw, paint, and create fun artwork for scrapbooks, craft projects, and slide shows. Mark up documents, sign your name, sketch quick diagrams, and use handwriting to compose emails. Get the control of the Graphire and join million of satisfied Wacom tablet users.

With your purchase of any Graphire tablet, you'll get valuable art and photo editing software, including Adobe Photoshop Elements 3 to help you edit photos, Nik Color Efex Pro 2 GE to help you selectively add creative color effects and filters to any photo, and Corel Painter Essentials 2 to help you create unique artwork from your digital photos.

Graphire works great with any software your mouse does, and it runs on both PCs and Macs. Also, you can use a Graphire pen to unleash new functionality designed for pen tablets within Windows Vista like personal note taking, email signing, handwriting recognition, handwritten emails, and pen flick navigation.

The Graphire Bluetooth gives you over 30-feet of wireless freedom and allows you work without the hassle of a cord. Compatible with any Bluetooth 1.1 or higher computer, the Graphire Bluetooth is easy to install and operate. Power your tablet with the rechargeable lithium polymer battery (gives you up to 25 hours between charges) or plug into the universal power adapter to simultaneously charge your tablet and work at the same time.



Easy to use with Precision

- ◆ It's easy to use a pen tablet because every point on the tablet has a matching point on the screen. When you move your pen over the tablet, the cursor moves in precisely the same way on the screen. Where you touch your pen tip to the tablet is where you click.
- ◆ With 512 levels of pressure sensitivity, you can control your software tools by changing how hard you press the pen tip on the tablet. Using pressure sensitivity, you can dynamically control things like exposure, brush size, opacity, and more.

Graphire Tablet

- ◆ The ergonomic Graphire tablet lets you work comfortably. The transparent frame allows you to customize your Graphire by inserting family photos, artwork, designs, or textures below the tablet cover.

ExpressKeys

- ◆ Two programmable ExpressKeys give you convenient mouse clicks and keyboard shortcuts right at your fingertips.

Scroll Wheel

- ◆ A handy scrolling finger wheel gives you easy navigation and functions as a third programmable button.

Graphire Pen & 3-Button Mouse



- ◆ Fitting comfortably in your hand, the Graphire Pen gives you 512 levels of pressure sensitivity at both the tip and at the eraser for easy fixes. The DuoSwitch along the pen allows you to program your most common action into the pen itself. Use the tablet's integrated pen compartment or the independent pen stand to keep your pen handy.
- ◆ The Graphire mouse is cordless, battery-free, and ball-free for smooth, accurate tracking.

USB Connection & Battery Free Technology

Quick installation to your computer with USB or Bluetooth connectivity. Patented cordless, battery-free technology for a natural feel and superior performance.

	Graphire4 4x5	Graphire4 6x8	Graphire Bluetooth
Levels of Pressure Sensitivity	512	512	512
Active Area	4x5 - 20 sq. in.	6x8 - 48 sq. in.	6x8 - 48 sq. in.
ExpressKeys	2	2	2
Mouse	3-Button	3-Button	3-Button
Pen	Standard Pen	Standard Pen	Standard Pen
Pen Tilt Support	—	—	—
Connectivity	USB	USB	USB / Bluetooth
SKU / Price	White (WAG44X5UW) Silver (WAG44X5US) Blue (WAG44X5UBL) 99.95	White (WAG46X8UW) Silver (WAG46X8US) Blue (WAG46X8UBL) 199.95	(WAG36X8BT) 239.95

INTUOS3

Professional Pen Tablet

Quickly and professionally edit photos and create digital artwork by turning on the full power of Adobe Photoshop, Corel Painter, and over 100 other leading software applications. Create universal settings for your pen and tablet, or alter your settings by application for maximum productivity. Intuos pen tablets use Wacoms Penabled technology to give you the natural feel and superior performance of Wacoms patented, cordless and battery-free technology. Get the control, comfort, and productivity of Intuos3 and join millions of satisfied Wacom tablet users. Alternating between the comfortable Grip Pen and the ergonomic five-button Intuos3 mouse reduces repetitive motion. It's an easy and natural way to work. Intuos3 runs on both PCs and Macs. Also, you can use the Intuos pen to unleash new functionality designed for pen tablets within Windows Vista like personal note taking, email signing, handwriting recognition, handwritten emails, and pen flick navigation.



Pressure Sensitivity

- ◆ With 1,024 levels of pressure sensitivity, you can control your software tools by changing how hard you press the pen tip on the tablet. Using pressure sensitivity, you can dynamically control things like exposure, brush size, opacity, and more.

Intuos3 Pen Tablet

- ◆ The sloping, contoured palm rest provides comfort while you work. Adjust your cord position vertically or horizontally for greater workspace flexibility. The generous 8-foot cable gives you room to kick back.

ExpressKeys

- ◆ Eight strategically placed programmable ExpressKeys (4 on the 4x6) are “chordable” and can be used for mouse clicks, modifier keys, open/run applications, pop-up menus, and keyboard shortcuts.

Touch Strips

- ◆ Finger-sensitive Touch Strips allow you to quickly scroll, zoom, change brush size, and more.

Grip Pen & 5-Button Mouse

- ◆ With 1,024 levels of tip and eraser pressure sensitivity, the Intuos3 Grip Pen fits comfortably in your hand with a cushioned and contoured grip for a natural feel. The pen has a programmable DuoSwitch and tilt sensitivity. It also comes with multiple nibs for a variety of “feels.” Keep your pen handy in the included multi-position pen stand.
- ◆ The Intuos3 five-button mouse is ball-free and optics-free for smooth, accurate tracking. It's ambidextrous low-profile design gives you just the right feel. Five programmable buttons and a fingerwheel give you added flexibility and control.

Intuos3 Driver

- ◆ Tablet driver software allows you to create universal settings for your pen and tablet or alter your settings by application for maximum productivity. An intuitive interface gives you detailed control so you can work exactly the way you want, personalize the way your pen feels, access your favorite keystroke combinations or optimize your work environment with flexible mapping.

Package Includes

- ◆ Intuos3 pen tablet, Grip pen and five button mouse; Pen stand; Printed user manual; CD with tablet driver software for installation; CD with free software including: Adobe Photoshop Elements 4 for editing family photos, Corel Painter Essentials 3 for creating original artwork, and Nik Color Efex Pro 2.

	Intuos3 4x6	Intuos3 6x8	Intuos3 6x11	Intuos3 9x12	Intuos3 12x12	Intuos3 12x19
Levels of Pressure Sensitivity	1024	1024	1024	1024	1024	1024
Active Area	4x6 - 24 sq. in.	6x8 - 48 sq. in.	6x11 - 66 sq. in.	9x12 - 108 sq. in.	12x12 - 144 sq. in.	12x19 - 228 sq. in.
ExpressKeys	4	8	8	8	8	8
Touch Strips	1	2	2	2	2	2
ToolID	✓	✓	✓	✓	✓	✓
QuickPoint	–	–	–	✓	✓	✓
Accessories	✓	✓	✓	✓	✓	✓
Mouse	5-Button	5-Button	5-Button	5-Button	5-Button	5-Button
Pen	Grip Pen	Grip Pen	Grip Pen	Grip Pen	Grip Pen	Grip Pen
Pen Tilt Support	✓	✓	✓	✓	✓	✓
SKU / Price	WAI34X6UP 229.95	WAI36X8UP 229.95	WAI36X11UP 369.95	WAI39X12UP 399.95	WAI312X12UP 549.95	WAI312X19UP 719.95

CINTIQ 21UX

Write directly on-screen!

Wacom's Cintiq 21UX interactive pen display combines the advantages of an LCD monitor with the control, comfort, and productivity of Wacom's most sophisticated patented cordless, battery-free tablet technology. By using a pen directly on the screen, you work much more quickly and naturally. The Cintiq 21UX has an 21.3 high-resolution display and a dynamically adjustable stand that allows the display to be rotated, inclined, and even quickly removed for in-lap use. To further enhance your comfort, the Cintiq 21UX comes with a cushioned Grip Pen for use directly on the screen allowing you to create in the most natural way possible.



Intuitive to use

- ◆ When using a Cintiq, you work with the pen directly on the screen, which allows you to take advantage of your natural hand-eye coordination to work more quickly and intuitively in any software application. There is little or no learning curve because of this natural "pen-on-paper" work approach.

Pressure sensitivity

- ◆ Like the Intuos3 tablets, the 21UX offers 1,024 levels of pressure sensitivity, so you can control your software tools by changing how hard you press the pen tip on the tablet.

Ergonomic comfort

- ◆ A completely flat surface from edge-to-edge, allows the pen and hand to glide over the entire surface comfortably. Artists and designers will especially appreciate this, as it eliminates the artificial borders and distractions caused by a raised bezel edge. Designers, architects, technicians, and engineers can use guides and drawing tools such as French curves, protractors, rulers, and templates directly on the surface.

ExpressKeys

- ◆ Two programmable ExpressKeys give you convenient mouse clicks and keyboard shortcuts right at your fingertips. ExpressKeys are "chordable" and can be used for modifier keys, keyboard shortcuts, mouse clicks, open/run applications, and pop-up menus.

Cintiq 21UX driver

- ◆ Tablet driver software allows you to create universal settings for your display or alter your settings by application for maximum productivity. An intuitive interface gives you detailed control so you can work exactly the way you want, personalize the way your pen feels, access your favorite keystroke combinations and optimize your work environment with flexible mapping.

Touch Strips

- ◆ Finger-sensitive Touch Strips give you access to quick scrolling, zooming, controlling brush size, and more.

Cintiq 21UX Grip Pen

- ◆ The cushioned, contoured grip fits comfortably in your hand and has 1,024 levels of tip and eraser pressure sensitivity and tilt sensitivity for even more control. The programmable DuoSwitch along the pen allows you to program your most common actions into the pen itself.

Tactile Sensation

- ◆ Unique LCD technologies achieve a natural paper-like experience. The surface has two coatings, one to diminish glare and another to provide a texture simulating the feel of paper. These surfaces are also hardened to provide durability and longevity. The LCD itself has been structured to eliminate any screen distortion when the pen tip is pressed against the surface. The result is an incredibly natural and intuitive experience.

No-fuss System Integration

- ◆ You control the configuration. Cintiq will work seamlessly with your existing mouse or Wacom Intuos3 tablet and can be installed as a single monitor or as part of a multi-monitor combination. Standard connection options work with all primary platforms (USB for pen; DVI or VGA for video).

Package Includes

- ◆ Cintiq 21UX interactive pen display
- ◆ Cordless, battery-free Grip Pen and desktop pen stand
- ◆ Adjustable display stand
- ◆ Integrated video, data, and universal AC power adapter with US power cord
- ◆ Graphics adapters
- ◆ Replacement pen nibs (1 stroke nib, 1 felt nib, 3 standard nibs)
- ◆ ICC profile created with X-Rite MonacoOPTIXR
- ◆ CD with Quick Start Guide; CD with tablet driver software for installation
- ◆ DVD with valuable partner software
 - Adobe Photoshop Elements 4
 - Corel Painter Essentials 3
 - Nik Color Efex Pro 2 IE
 - Wacom Brushes 2

Display Specifications

- ◆ Type: 21.3" diagonal TFT active-matrix LCD
- ◆ Display area: 17 x 12.75"
- ◆ Resolution: UXGA (1600 x 1200 pixels)
- ◆ Number of colors: 16.77 million

General Specifications

- ◆ Dimensions (WxDxH): 21.1 x 16.5 x 5.2"
- ◆ Weight: 22.4 pounds ◆ Data port: USB
- ◆ Graphics input: Analog RGB (HD 15pin) or digital DVI(29 pin)
- ◆ Stand adjustability: ±180° rotation, 10° to 65° incline

Cintiq 21UX (WAC21).....2495.95