

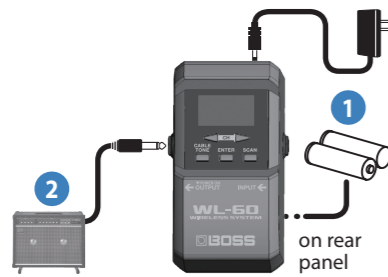
* Before using this unit, carefully read the leaflet "USING THE UNIT SAFELY" and "IMPORTANT NOTES." After reading, keep the document(s) where it will be available for immediate reference.

Quick Start

1. Preparing the receiver

1 Install batteries, or connect the AC adaptor

2 Connect to your amp or effect unit (the receiver powers-on)

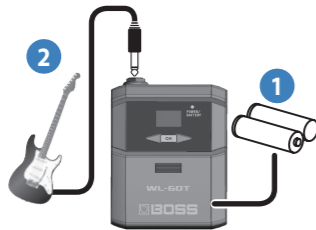


2. Preparing the transmitter

1 Install batteries

* Do not power-on the transmitter at this point.

2 Use the included cable to connect your guitar



3. Selecting the channel

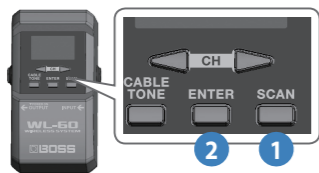
Receiver

* Before you proceed, make sure that the transmitter is powered-off.

1 Press the [SCAN] button to enter scan mode

The channel with the least radio interference is detected automatically.

2 Press the [ENTER] button to confirm the channel

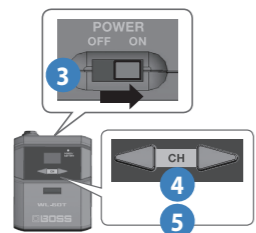


Transmitter

3 Power-on the transmitter

4 Press either of the [CH] (◀ ▶) buttons; the display shows the channel

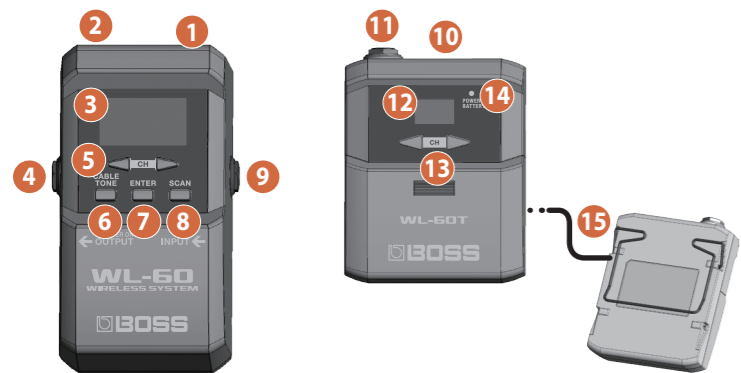
5 Use the [CH] (◀ ▶) buttons to select the same channel as the receiver



* To prevent malfunction and equipment failure, always turn down the volume, and turn off all the units before making any connections.

* If you handle batteries improperly, you risk explosion and fluid leakage. Make sure that you carefully observe all of the items related to batteries that are listed in the leaflet "USING THE UNIT SAFELY."

Panel Descriptions



Receiver (WL-60)

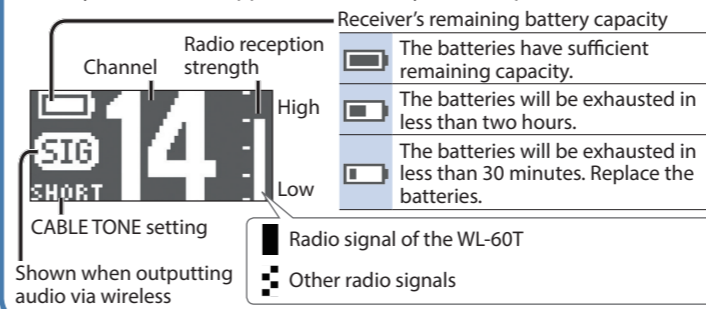
No.	Name	Explanation
1	IN jack	Connect the AC adaptor (PSA-S series: sold separately) to the IN jack. When an AC adapter is used, you can connect a PCS-20A parallel DC cord (sold separately) to supply power to effects processors and other PSA-S adaptor-compatible gear. * Power cannot be supplied from the OUT jack when the WL-60 is running on batteries.
2	OUT jack	* If you use the PCS-20A to supply power to devices that are compatible with PSA-S adaptors, make sure that the total current consumption of all devices (including the WL-60) does not exceed the maximum output current of the PSA-S series unit you're using. The maximum output current is listed in the OUTPUT field of the label affixed to the adaptor itself.
3	Display	Displays information such as the channel and the radio signal strength.
4	OUTPUT jack	Connect this to your amp or effect unit. Turning the power on/off The OUTPUT jack doubles as the power switch. Power to the unit is turned on when you plug into the OUTPUT jack; the power is turned off when the cable is unplugged. When powering up: Turn on the power to your amp last. When powering down: Turn off the power to your amp first.
5	[CH] (◀ ▶) buttons	Select the channel or move the cursor.
6	[CABLE TONE] button	Simulates the tonal character of a guitar cable.
7	[ENTER] button	Confirms an operation.
8	[SCAN] button	Selects the receiver's channel automatically.
9	INPUT jack	Connect your guitar here if wireless use becomes difficult, such as if the transmitter batteries run low or if the radio-frequency spectrum is congested. * If a guitar is connected, operations of the unit and its wireless functionality are disabled.

Transmitter (WL-60T)

No.	Name	Explanation
10	[POWER] switch	Turns the power on/off.
11	INPUT jack	Use the included cable to connect your guitar here.
12	Display	Indicates the channel.
13	[CH] (◀ ▶) buttons	Select the channel.
14	POWER/BATTERY indicator	Indicates the power supply status. Green The batteries have sufficient remaining capacity. Orange The batteries will be exhausted in less than two hours. Red The batteries will be exhausted in less than 30 minutes. Replace the batteries.
15	Strap clip	Attach this to your guitar strap.

Play mode screen

The Play mode screen appears immediately after the power is turned on.



Selecting the Receiver's Channel Automatically (Scan Mode)

Scan mode automatically selects the channel that has the least radio-frequency interference.

* Use Scan mode to re-select the channel before your actual live performance, or when you are in a new location.

* If other wireless systems will be in use nearby, put them in operating condition.

1. Power-off the transmitter.

2. Press the [SCAN] button to enter scan mode.

The channel with the least radio interference is automatically selected.



* If numerous wireless systems or radio devices (such as Wi-Fi routers or Bluetooth devices) are operating nearby, there might be radio interference on all channels. Power-off unused radio devices, and then use Scan mode once again to select a channel.

MEMO

You can also use the [CH] (◀ ▶) buttons to change to another channel.

3. Press the [ENTER] button to confirm the channel.

4. Power-on the transmitter.

Selecting the Receiver's Channel Manually

If you already know the channel that can be used, you can select the channel manually.

1. Power-off the transmitter.

2. In the Play mode screen, use the [CH] (◀ ▶) buttons to select a channel.

* Note the radio reception strength shown in the display, and select a channel, avoiding any channel that is used by another WL-60T unit or any channel that has significant radio interference (high radio reception strength).

3. Power-on the transmitter.

Selecting the Transmitter's Channel

1. Press either of the [CH] (◀ ▶) buttons to make the channel appear in the display.

2. Use the [CH] (◀ ▶) buttons to select the same channel as the receiver.

Simulating the Tonal Character of a Guitar Cable (CABLE TONE)

Here's how to simulate the tonal character of a guitar cable.

1. Press the [CABLE TONE] button to change the setting.

Each time you press the button, the setting alternates in the order of "OFF → SHORT → LONG."

OFF	Off
SHORT	The character of a guitar cable approximately three meters (9.8 feet) long
LONG	The character of a guitar cable approximately six meters (19.6 feet) long

For Stable Wireless Communication

- Do not place obstructions between the receiver and the transmitter. Do not allow too much distance between the receiver and transmitter.
- Keep the receiver at least three meters (9.8 feet) away from any radio device (*1) or microwave oven.
- Dropouts might occur in the audio if the radio conditions in the area change. Use Scan mode once again to select the channel. If this does not solve the problem, power-off any unused radio device (*1) or microwave oven, and use Scan mode once again to select the channel.
- If you hear the sound of a different guitar, use scan mode once again to select a different channel. If you're using multiple WL-60T units simultaneously, manually select a channel that does not conflict.

*1: Such as a Wi-Fi router or Bluetooth device

Main Specifications

BOSS wireless system: WL-60

Receiver	
Wireless Format	BOSS proprietary digital audio format
Wireless Carrier Frequency	2.4 GHz
Compatible Channels	14 (May vary due to local conditions)
Transmission Range	20 meters (65 feet) line-of-sight (May vary due to local conditions)
Latency	2.3 ms
Dynamic Range	110 dB or greater
Frequency Response	20 Hz–20 kHz
Nominal Input Level	-10 dBu 0 dBu = 0.775 Vrms
Power Supply	Alkaline battery (AA, LR6) x 2, AC adaptor (sold separately)
Dimensions (including rubber foot)	70 (W) x 120 (D) x 57 (H) mm/ 2-13/16 (W) x 4-3/4 (D) x 2-1/4 (H) inches
Weight (including batteries)	220 g / 8 oz
Accessories	Owner's Manual, Leaflet USING THE UNIT SAFELY, Transmitter (WL-60T), Cable, Rubber foot x 4, Alkaline battery (AA, LR6) x 2
Options (sold separately)	AC adaptor: PSA-S series Parallel DC cord: PCS-20A

Transmitter (WL-60T)	
Nominal Input Level	-10 dBu 0 dBu = 0.775 Vrms
Power Supply	Alkaline battery (AA, LR6) x 2
Dimensions (including strap clip)	68 (W) x 88 (D) x 30 (H) mm/ 2-11/16 (W) x 3-1/2 (D) x 1-3/16 (H) inches
Weight (including batteries)	120 g / 5 oz
Accessory	Alkaline battery (AA, LR6) x 2

* This document explains the specifications of the product at the time that the document was issued. For the latest information, refer to the Roland website.

https://roland.cm/wl-60_spec



Attaching the rubber feet

Attach the included rubber feet as necessary, such as if you are placing the receiver on the floor.



Changing the orientation of the strap clip

By reversing the vertical orientation of the strap clip, you can attach the transmitter to your guitar strap in a different position.

* When attaching or detaching the strap clip, take care not to scratch the unit.

