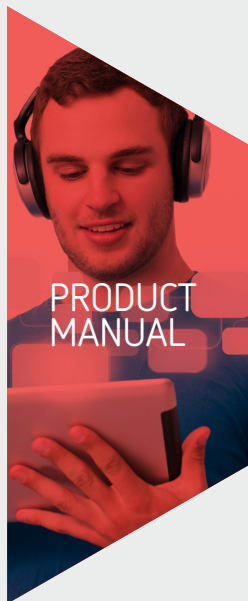


HCO-10MB

ON-EAR  
BLUETOOTH  
HEADSET  
WITH MICROPHONE



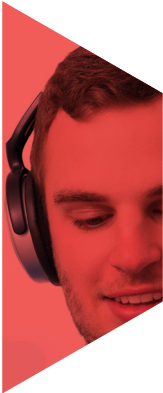
POLSEEN™



PRODUCT  
MANUAL

# CONTENTS

Introduction.....	3
Precautions .....	4
Overview.....	5
Charging the HCO-10MB.....	6
Turning On the HCO-10MB .....	6
Pairing and Connecting .....	7
Wearing the Headset.....	8
Controlling Audio Playback.....	8
Using the Call Functions.....	8-9
Activating the Key Lock.....	9
Voice Control Function .....	10
Using the Included Audio Cable.....	10
Troubleshooting.....	11-14
Specifications .....	15
One-Year Limited Warranty.....	16



ON-EAR  
BLUETOOTH HEADSET  
WITH MICROPHONE  
HCO-10MB



## THANK YOU FOR CHOOSING POLSEN.

This Bluetooth headset makes it easy for you to wirelessly play your music and manage your phone calls. Ideal for use with your Bluetooth-enabled mobile phone, you can use it with nearly any compatible Bluetooth-enabled device, including computers and MP3 players. It's easy to set up and use, and it features advanced functions and an LED that indicates the status of the headset. The headset delivers clear, dynamic sound, with cushioned on-ear cups that provide isolation, allowing you to enjoy your music in comfort and without extraneous distractions.

Among the benefits you'll enjoy:

- Control audio playback: play/pause, next/last track, and volume control
- Manage phone calls: send, accept, and redial
- Voice control on supported devices
- Included stereo 3.5 mm male-to-male audio cable for passive, wired listening
- Internal, USB-rechargeable Li-ion polymer battery



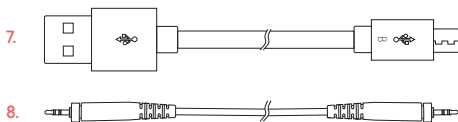
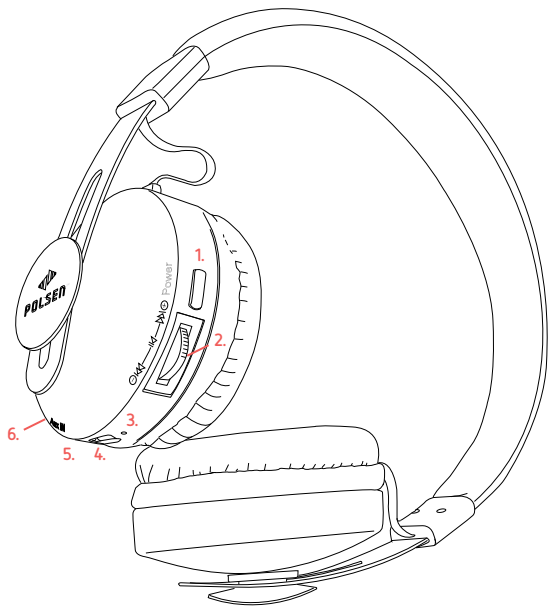
## PRECAUTIONS ⚠️ ⚠️

- Please read and follow these instructions and keep this manual in a safe place.
- Keep this product out of the reach of children.
- Be mindful of your surrounding environment when using this product. Do not use this product while driving an automobile, operating machinery, or performing other tasks that require your full attention.
- Keep this product away from pacemakers and similar implanted devices. This product's internal magnets may cause harmful interference.
- Exposure to high sound levels can cause permanent hearing loss. Avoid listening at high volumes for extended periods of time.
- This product is not water resistant. Keep it away from rain, snow, humidity, and general moisture. Do not use this product if it becomes wet.
- Do not use or store this product in flammable conditions (such as environments containing flammable gases or liquid chemicals). This can damage the headset, start a fire, or cause an electrical shock.
- Do not expose this product to open flames or dispose of it in a fire. Doing so can cause the internal battery to explode.
- Do not store or use this product at temperatures above 113°F (45°C).
- Clean this product with only a soft, dry cloth.
- In order to prolong the headset's battery life, turn off the headset after use.
- To avoid damaging the headset, turn it off before extended periods of disuse, and charge the battery at least once every two months.
- All photos are for illustrative purposes only.



## OVERVIEW

1. Power button
2. Multifunction button
3. Status LED
4. USB Micro-B charging port
5. 3.5 mm headphone jack
6. Microphone
7. USB Standard-A male to Micro-B male charging cable
8. Stereo 3.5 mm male-to-male audio cable



## CHARGING THE HCO-10MB

Before using the HCO-10MB for the first time, you will need to charge it. To charge the HCO-10MB, use the included USB cable to plug the headset into a USB power source. The USB power source can be your computer or a USB power adapter (not included).

When the HCO-10MB is charging, the status LED will blink red. When charging is complete, the status LED will glow red. Charging time should take approximately two to three hours.

**Note:** Before using the HCO-10MB for the first time, charge it for at least four hours.

## TURNING ON THE HCO-10MB

To turn on the HCO-10MB, press and hold the power button. The headset will emit a beep upon turning on. The status LED will glow and then blink blue.

To turn off the HCO-10MB, press and hold the power button until the headset emits a beep, and the status LED briefly glows blue and then turns off.

**Low-power warning:** When battery power is low, the status LED will rapidly flash red and emit a beep every 30 seconds. At this point, we recommend recharging the headset.



## PAIRING AND CONNECTING

The first time you use the HCO-10MB with your device, you will need to pair them. Pairing registers the headset with your device and saves the headset's Bluetooth profile for future use. After they have been paired, you will be able to automatically connect the HCO-10MB to your device. This saves time and makes it easier for you to connect the headset and your device in the future.

**To pair the HCO-10MB with your device, follow these steps:**

1. Make sure the headset is powered off.
2. Press and hold the power button for approximately eight seconds, until the headset emits two beeps and the status LED flashes alternately blue and red. The headset is now discoverable.
3. On your device, enter Bluetooth settings and search for Bluetooth devices.
4. Select "HCO-10MB" when it appears on the list of discovered Bluetooth devices.

**Note:** If your device requires you to enter a code in order to pair it with the headset, enter 0000 (four zeroes).

5. After successfully pairing and connecting, the headset will emit a beep and the status LED will blink blue.

**Note:** For more information on your device's Bluetooth capabilities, consult your device's user manual.



## WEARING THE HEADSET

Wear the headset with the controls on your left side. You can use your thumb to easily access the power and multifunction buttons.

Adjust the headset's fit by gently sliding the ear cups up and down their slots in the headband.



## CONTROLLING AUDIO PLAYBACK

You can use the HCO-10MB to wirelessly control audio playback on your Bluetooth-enabled device. Using the onboard controls is easy and intuitive—the multifunction button is conveniently located and clearly marked with familiar icons.

**Note:** Some devices require you to open the music player or select a song. For more details, consult your device's instruction manual.

To play or pause your music, press the multifunction button **▶|**.

To increase the volume of the headset, rock the multifunction button backward **⊕**. To decrease the volume of the headset, rock the multifunction button forward **⊖**. You can rock and hold it to continuously adjust the volume.

To skip forward one track, rock the multifunction button forward twice **▶▶**. To skip backward one track, rock the multifunction button backward twice **◀◀**.

## USING THE CALL FUNCTIONS

Once the HCO-10MB is connected to your mobile phone, you can use it to control your phone's call functions. This makes it easy for you to smoothly handle your phone calls with a single button, without reaching for your mobile phone.



## To answer a call, follow these steps:

1. When a call comes in, you will hear your ring tone via the headset, and the status LED will flash blue.

If you are listening to music when a call comes in, the music will pause, and you will hear your ring tone. Your music will resume after the phone call.

**Note:** When receiving an incoming call, some mobile phones may require you to manually select the Bluetooth headset as the audio source.

2. Press the power button to answer the phone.

To hang up, press the power button again. The headset will emit a beep and hang up.

To redial your mobile phone's most recent outgoing call, press and hold the power button for three seconds when the phone is idle. The headset will emit a long and a short beep and redial the last number.

## ACTIVATING THE KEY LOCK

The key-lock function deactivates the buttons on the headset to prevent you from accidentally engaging your connected device.

To activate the key lock function, press the multifunction button twice. The headset will emit two tones in descending order. To deactivate the key-lock function, press the multifunction button twice again. The headset will emit two tones in ascending order.



## VOICE CONTROL FUNCTION

Voice control gives you hands-free control over your device's audio and call functions. By speaking to your device, you can control audio playback, dial your contacts, and more.

To activate the voice-control function, press the headset's power button when your device is in standby or music mode.

**Note:** Voice control is available only on devices that support the feature. Functionality will vary by device.

## USING THE INCLUDED AUDIO CABLE

The HCO-10MB comes with a stereo audio cable that you can use to connect the headset to an audio source that has a 3.5 mm audio output. This lets you use the headset as a pair of passive wired headphones and is useful if you want to connect the headset to a device that is not Bluetooth-enabled.

**To use the included audio cable, follow these steps:**

1. Make sure the headset is powered off.
2. Plug one end of the cable into the headset's 3.5 mm headphone jack.
3. Plug the other end of the cable into the audio output of a stereo audio source.

**Note:** When the HCO-10MB is plugged into your device, the audio control and other functions will not be available.



## TROUBLESHOOTING

The HCO-10MB headset is easy to set up and use, and it should run smoothly under normal operation. If you happen to experience problems with the headset, this troubleshooting chart should help you solve them.

Problem	Solution
The headset will not turn on.	Make sure the headset is fully charged.
The headset will not charge.	<p>Make sure the USB charging cable is fully plugged into both the headset and the USB power source.</p> <p>Turn the headset off and disconnect the USB charging cable from the headset and the power source. Reconnect the USB charging cable and try charging the headset.</p> <p>If you are using a USB AC adapter, make sure that the adapter is properly plugged into the outlet, and that the adapter and the outlet are operational. Try using a different USB AC adapter or outlet.</p> <p>If you are using a computer's USB port for power, make sure that the computer is powered on and that the USB port is operational. Try using a different USB port on the computer.</p> <p>Make sure the USB charging cable is reliable. Try using a different USB Standard-A male to Micro-B male cable.</p>



<b>Problem</b>	<b>Solution</b>
<p>My device is unable to pair or connect with the headset.</p>	<p>Make sure the headset is powered on.</p> <p>Make sure that the headset is discoverable and that your device is searching for Bluetooth devices.</p> <p>The headset or your device may be low on power. Make sure the headset and your device are fully charged.</p> <p>The Bluetooth signal between the headset and your device may be weak. Make sure that the headset is within range (32.8' or 10 m) of your device and that there are no large obstructions between the two.</p> <p>Turn off the headset, and then turn it on again.</p> <p>Turn off your device, and then turn it on again.</p> <p>Delete your device's history of paired Bluetooth devices, and restart your device before making another attempt to pair it with the headset.</p>
<p>The buttons on the headset are not responding.</p>	<p>Make sure the key-lock function is not activated.</p>

<b>Problem</b>	<b>Solution</b>
<p>The headset is connected to my device, but there is no sound coming through the headset.</p>	<p>Make sure that the headset and your device have successfully established a Bluetooth connection.</p> <p>Make sure the volume controls on the headset and your device are not set to minimum or mute.</p> <p>Turn up the volume on your device.</p> <p>Turn up the volume on the headset.</p> <p>If you are attempting to listen to music, your device may require you to open the music player or select a song.</p> <p>Disconnect and then reconnect the headset to your device. You may need to restart your device's music player after the headset and your device have successfully established a Bluetooth connection.</p> <p>Delete your device's history of paired Bluetooth devices, and then restart your device before making another attempt to pair it with the headset.</p>



Problem	Solution
<p>The headset is successfully connected to my device, but it only supports the call functions. The audio playback functions are not working, or I can't hear any music.</p>	<p>On some devices, you will need to select the song in the device's media player before playing it via the headset.</p> <p>If you are listening to music when a call comes in, the music will pause, and you will hear your ring tone. Your music will resume after the phone call.</p> <p>Disconnect and then reconnect the headset to your device. You may need to restart your device's music player after the headset and your device have successfully established a Bluetooth connection.</p> <p>Some devices support the call functions but not the audio playback functions.</p>
<p>The headphone is emitting sizzling or popping noises, or the sound coming through the headset is intermittent or distorted.</p>	<p>The Bluetooth signal between the headset and your device may be weak. Make sure that the headset is within range (32.8' or 10 m) of your device and that there are no large obstructions between the two.</p> <p>The headset or your device may be low on power. Make sure the headset and your device are fully charged.</p> <p>If you are streaming from a wireless network, your device's wireless networking signal may be poor. Move the headset and your device away from anything that may cause interference with the wireless networking signal, like a microwave oven or another wireless device. If your device is streaming via a Wi-Fi network, try moving the device closer to the wireless router.</p>

**Note:** For more information on your specific Bluetooth-enabled device, consult your device's instruction manual.



# SPECIFICATIONS

## HEADPHONES

- EARPHONE DIAMETER** 1.6" (40 mm)
- IMPEDANCE** 32  $\Omega$
- SPL** 93 dB @ 1 kHz
- RATED POWER** 20 mW per earphone
- FREQUENCY RESPONSE** 20 Hz to 20 kHz

## MICROPHONE

- MICROPHONE DIAMETER** 0.3" (6.5 mm)
- POLAR PATTERN** Omnidirectional (360°)
- SPL** -42 dB  $\pm$ 3 dB
- IMPEDANCE**  $\leq$ 2,200  $\Omega$
- FREQUENCY RESPONSE** 30 Hz to 16 kHz
- OPERATING VOLTAGE** 4.5 V

## BLUETOOTH

- BLUETOOTH SPECIFICATION** v2.1 + EDR
- FREQUENCY COVERAGE** 2.402 to 2.480 GHz ISM band
- WIRELESS RANGE** 32.8' (10 m)

## GENERAL SPECIFICATIONS

- BATTERY** 3.7 V, 250 mAh rechargeable Li-ion polymer battery
- CHARGING POWER** USB port, DC 5 V, 500 mA
- CHARGING TIME** 3 hours
- OPERATING TIME** Approximately 8 hours
- WEIGHT** 5.6 oz. (158.8 g)



## ONE-YEAR LIMITED WARRANTY

Polsen provides a limited warranty to the original purchaser that this product is free from defects in materials and workmanship under normal consumer use for a period of one (1) year from the original purchase date or thirty (30) days after replacement, whichever occurs later. Polsen's responsibility with respect to this limited warranty shall be limited solely to repair or replacement, at Polsen's discretion, of any product that fails during normal consumer use. Inoperability of the product or part(s) shall be determined by Polsen. If the product has been discontinued, we reserve the right to replace it with a model of equivalent quality and function.

To obtain warranty coverage, contact Polsen to obtain a return merchandise authorization ("RMA") number, and return the defective product to Polsen, along with the RMA number and proof of purchase. Shipment of the defective product is at the purchaser's own risk.

This warranty does not cover damage or defect caused by misuse, neglect, accident, alteration, abuse, improper installation or maintenance. EXCEPT AS PROVIDED HEREIN, POLSEN MAKES NEITHER ANY EXPRESS WARRANTIES NOR ANY IMPLIED WARRANTIES, INCLUDING BUT NOT LIMITED TO ANY IMPLIED WARRANTY OF MERCHANTABILITY OR FITNESS FOR A PARTICULAR PURPOSE. This warranty provides you with specific legal rights, and you may also have additional rights that vary from state to state.

[WWW.POLSENAUDIO.COM](http://WWW.POLSENAUDIO.COM)

©2013 Gradus Group

