

PrintTao 8

Effortless Professional Printing

User Guide



Table of Contents

The guide includes the following sections:

- [Installation & First Program Start](#)
- [Creating a new Document](#)
- [Main Window](#)
- [Mediathek](#)
- [Tool Palettes](#)
- [Template](#)
- [Page overview](#)
- [Image properties](#)
- [Cell properties](#)
- [Print](#)
- [Central working area](#)
- [Editing an image cell](#)
- [Editing an image](#)
- [Cropping an image](#)
- [Rotating and flipping an image](#)
- [Cutting options for roll paper](#)
- [Horizontal Toolbar](#)
- [Preferences](#)



Manual for Printing with PrinTao 8

Installation & First Program Start

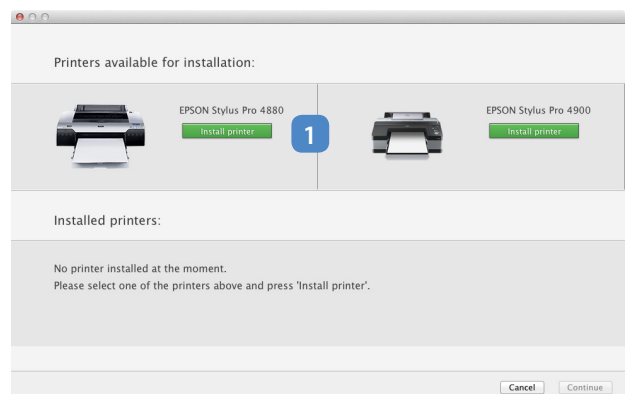
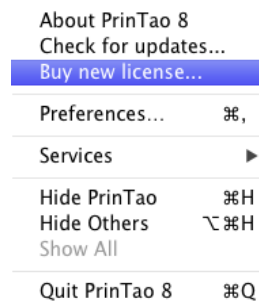
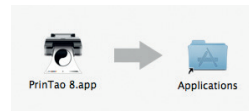
After downloading PrinTao 8, the disk image is opened with a double click. Using the mouse, the program icon can be drawn to the application folder alias. This action moves it to the application folder. Starting PrinTao 8 for the first time, the user license agreement will show up. Having agreed, PrinTao 8 can be unlocked for the appropriate printer models using a purchased license file. This file will be downloaded and installed automatically directly with the purchase. In addition, the license file will be sent per email for later usage. For manual installation, the license file having a .printao8_lic file extension is registered with a double click or by simply dragging it with the mouse onto the provided box in the welcome screen. Alternatively, it can be dropped right onto the program icon in the taskbar. PrinTao 8 now installs the license file and enables to setup the appropriate printer models.

Install additional Licenses

Licenses for additional printer classes can be purchased and installed directly from within PrinTao 8. Therefore, the PrinTao 8 top menu features an entry *Buy new license...*. Clicking it opens a new window to select and purchase a new license. After purchasing, PrinTao 8 automatically installs the new license and unlocks the additional printer models. For later use, the license file is also sent via email.

Install Printers

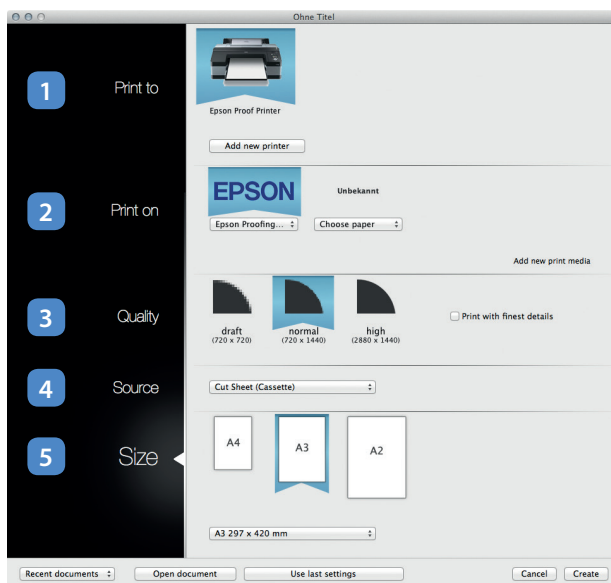
PrinTao 8 detects all printers, which are switched on and connected with the local network. It shows just those, which are included with installed licenses. By clicking on the green **Install printer (1)** button, PrinTao 8 downloads and installs actual printer drivers for the selected printer model and corresponding paper profiles from the printer manufacturer from the web. It is not necessary to enter the IP address manually, any further setup is done by PrinTao.



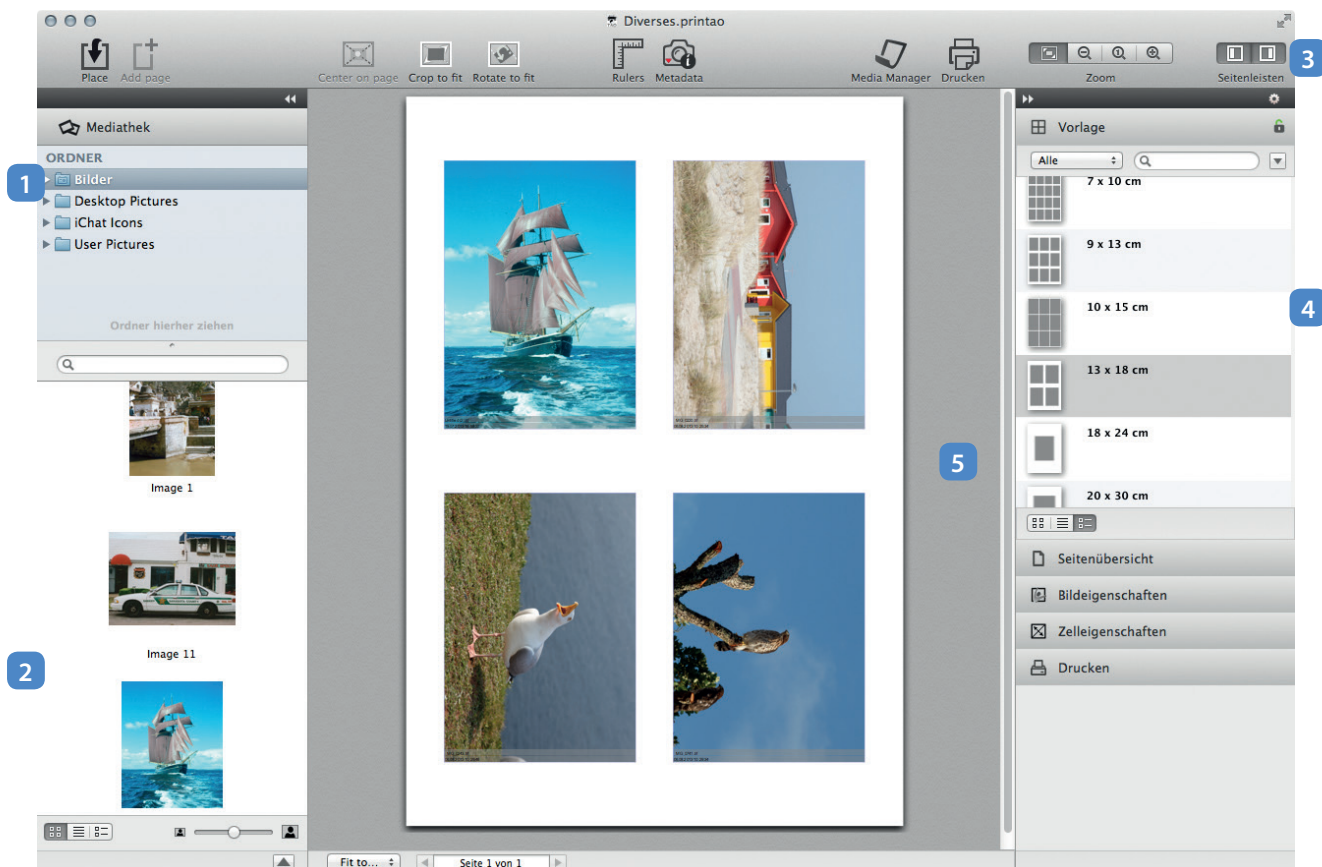
Creating a new Document

A new document has to be created before the actual work with PrinTao 8 can start. Therefore, a clearly structured dialog is guiding the user through the process of selecting **printer (1)**, **paper type (2)**, **print quality (3)**, and **paper source (4)** as well as the **print media size (5)**. For convenience, PrinTao 8 shows only the actually available options: For example, just those quality options can be selected, which are supported by the printer. Likewise, PrinTao 8 offers only those paper types and sizes, which are available for the respective printer. The list of available paper types will be updated automatically.

PrinTao 8 remembers the settings used for creating the former document. These settings can be restored for the new document by clicking on *Use last settings*. If desired, changes to the restored settings can be made at this point, before clicking on the *Create* button, which opens the new document window with its central working area.



Main Window



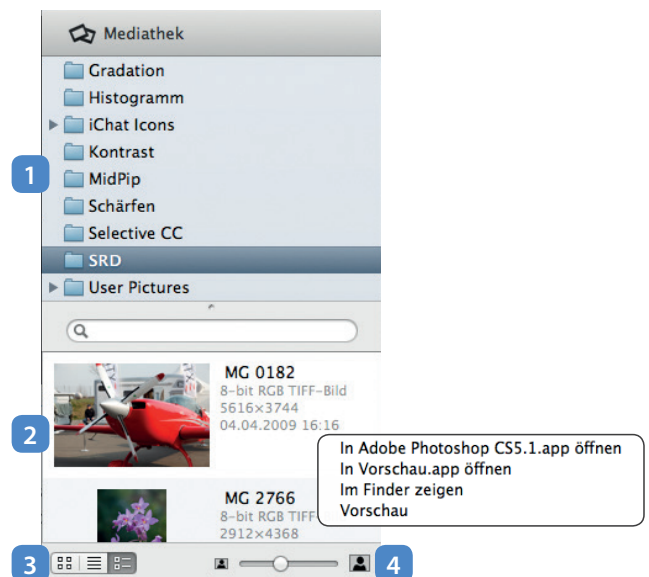
The main window of PrinTao 8 is basically sectioned into five areas: The **Mediathek (1)**, which optionally displays **Metadata (2)** for the image selected at the workspace or Mediathek. Furthermore a **horizontal toolbar (3)** above, some **tool palettes (4)** and the **central working area (5)**. Within these areas the entire process from selecting images, defining page layout to the final print order will take place. It is not necessary to switch back and forth between different program windows.

Images can be drawn from the *Mediathek* or the *Finder* to the central working area using the mouse. Alternatively, a file browser for importing images will open when clicking the *Place* button in the top horizontal toolbar. If an image is dropped besides the print media, PrinTao 8 will insert it at the end of the document. If it is dropped between two image cells, it is inserted there and all following image cell move one position back. An image can be overwritten by dropping another image exactly above an image cell. PrinTao 8 adds further page to the document if needed. If a template is used, which already contains image cells, images can be directly drawn to any of these cells.

Mediathek

The easiest way to select images for printing is to use the *Mediathek* dialog located in the left sidebar. Folders containing images can be drawn to the **folders area (1)** using the mouse. Orders drawn here, will stay available permanently. In this easy way, the *Mediathek* can be arranged to personal requirements. Right-clicking on a folder opens a context menu, which allows to remove this folder, to open it in the *Finder*, or to reload it. Alternatively, images can be drawn directly from the *Finder* to the PrinTao 8 window.

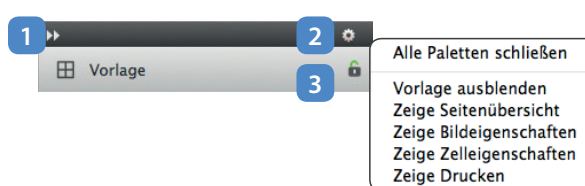
The content of A selected folder is shown in the lower part of the *Mediathek* as a **preview (2)**. This preview can be displayed as thumbnails, list of file names or thumbnails including details. A switch changes the kind of **preview display (3)** and a slider adjusts the **size (4)** of the thumbnails. Additionally, the text field works as a filter for quick searching for an image name inside the selected folder.



Images can be directly drawn with the mouse from the preview window to PrinTao's central working area. They will be inserted to the document according to the selected template. Performing a double click on an image inside the *Mediathek*, opens it with the default software for this file type. Right-Clicking opens a context menu offering further options and hitting the *space bar* key opens the selected image with the *OS X QuickLook* preview.

Tool Palettes

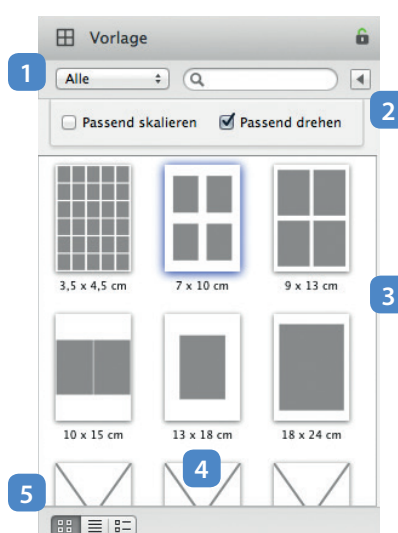
A sidebar with tool palettes is located at the central working area's right side. Clicking on a tool's title bar opens or closes this tool's palette. By default, the sidebar is preset to have only a single palette open at once. This way, the sidebar will remain tidy and tedious scrolling is unnecessary. By clicking on the padlock, a palette will **remain open (3)** permanently. If the padlock is locked, auto-closing the palette is prevented. The **gear wheel button (2)** at the very top right of the right sidebar opens a context menu to open and close individual tool palettes. The complete sidebar can be **hidden (1)** for a larger central working area by clicking the double arrow button.



Template

This tool palette contains a number of pre-defined templates for layouting the print medium. It includes templates for arranging the images on the medium in grid patterns, templates for photographers, who want to provide their customers with packages of images in different standard sizes, as well as templates for free placement of images and custom templates. Using a **drop-down menu (1)** the templates displayed in this dialog can be reduced to one of these groups.

A click on the arrow button at the top right displays **additional options (2)** for an automatic image placement. If the option *Crop to fit* is checked, PrinTao 8 increases or decreases the image until the image cell is completely filled – overlapping parts of the image are cut off. A check at *Rotate to fit* ensures that images are rotated at placement, if they would better fit into the cell after rotation.



The **template preview (3)** shows all available pre-defined, free and custom templates. Templates which are **not applicable (4)**, because they do not fit within the selected paper size, are crossed out and not selectable. A **switch (5)** changes the type of template preview display between icons, list and list of icons with description.

The template can also be changed, if the document already contains images. PrinTao 8 arranges all images according to the new template and adds new pages to the document if necessary. Doing this, an intelligent algorithm ensures to arrange all images on the print media as efficient as possible and thus ensures a minimal paper usage. Large savings can be achieved particularly when using a pack template.

Page overview

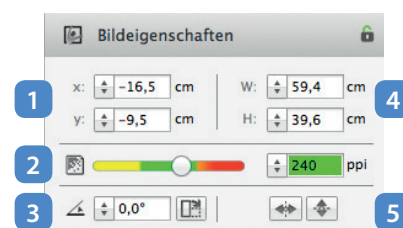
The *Page overview* palette is useful for navigating through larger documents and for quickly gaining an overview of all included images. Selecting a page in the overview palette, opens this page in the general working area. The status bar below the Page overview window shows the number of pages and number of images included with this document.

If using a *Free* template, the status bar does also contain buttons for adding new pages and for removing existing ones. For templates with fixed image cells, these buttons are obsolete.



Image properties

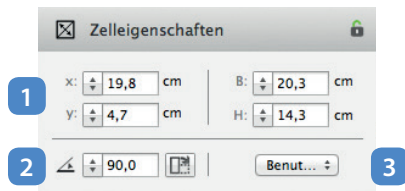
This palette dialog allows to view and modify basic properties of the image – not the image cell. These properties are **image position (1)**, **resolution (2)**, angle of **rotation (3)**, **image size (4)** and horizontal or vertical **flipping (5)**. The values displayed will change immediately, if the selected image is moved or scaled. Numerical values can also be directly entered into the text fields.



The background colors of the slider control indicate whether the resolution is set optimally. Regularly, the best print results can be achieved between 200 dpi and 400 dpi (green area). At lower resolutions (red area, image is too large), individual pixels may become visible and higher resolutions (yellow area, image is too small) can lead to artifacts due to scaling.

Cell properties

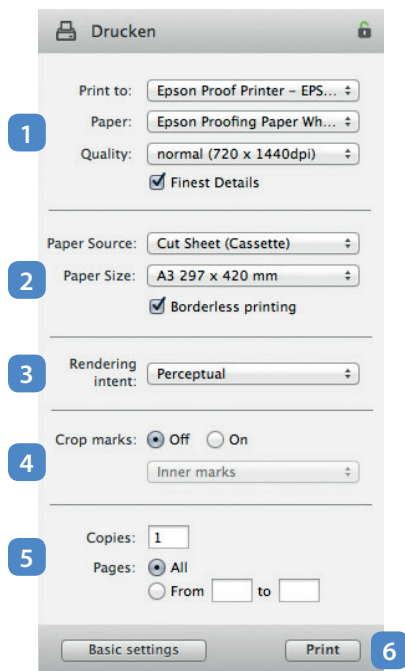
Similar to the image properties, this palette dialog enables to view and modify the properties of an image cell – not of the image itself. In addition to **cell coordinates** and **cell size (1)**, also the angle of **cell rotation (2)** can be adjusted. This angle is based on the orientation of the original image. The button next to the cell angle parameter rotates a selected cell at 90° clockwise around the center point of the cell. The drop-down menu offers some **standard cell sizes (3)** to select.



Print

The *Print* palette combines all settings relevant for the actual print. The options regarding **printer (1)** and **paper (2)** are set as these options have been set when creating the document (see above at “Creating a new Document”). All settings can be reviewed here and adjusted again if necessary. The *Finest Details* option improves the print impression of very fine, straight lines.

The drop-down menu for the **rendering intent (3)** offers a set of four rendering intents, which have been defined by the *International Color Consortium (ICC)*: *perceptually oriented*, *absolute colorimetric*, *relative colorimetric* and *saturation preserving*. Different color spaces of input and output devices afford a color space conversion of the print data to the printer’s color space. Depending on the image content and the purpose – the rendering intent – to be followed with the print, a different conversion algorithm will be used.



The *perceptual rendering intent*, also referred to as photographic rendering intent, compresses a larger source color space into the printer's color space. Relative color differences are preserved with this compression, resulting in an image impression, which is appealing to the human eye. This rendering intent is well suited for photographic printing.

For printing charts or images with a very limited color palette, the *saturation preserving rendering intent* is particularly suitable. Colors are rich and bright, but color fidelity is not necessarily given.

A *relative colorimetric rendering intent* is correcting the output data to the effect that all colors of the source material, which can be represented by the combination of printer and paper, will be colorimetrically correct. Colors, which are outside the paper's color space, will be moved to its border (clipping, burning). This will be no problem for offset color proofs printed on an inkjet printer, because the inkjet printer's color space is much larger, so there will be nothing lost. Due to the fact that the offset paper's white tone will not be simulated, the same offset paper should be used for the proof, a paper with a very similar white tone at least. On many proof systems, the relative colorimetric rendering intent is the default preset. It is perfect for photographic printing, when the color space of the output data lies completely within the color space of the printer and paper. In this case the output data can be reproduced completely and the print is colorimetrically correct.

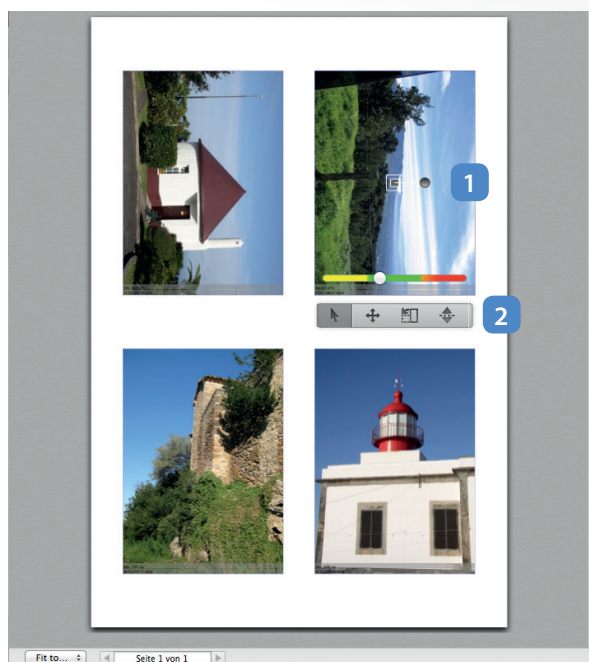
The *absolute colorimetric rendering intent* is also often used for digital proofs. If the paper, used for the proof print, is brighter than the paper, which will be used for the later offset print, this rendering intent simulates the offset paper's white tone. Thus, the offset paper is not necessarily required for proof printing.

Additional options set in the *Print* palette are **crop marks (4)**, which can be added to the images, and a restriction of the **pages to print (5)** to a certain range.

A click on the **print button (6)** finally starts the actual printing.

Central working area

The central working area shows the print media, on which the images are placed and prepared for printing. By selecting an image with a mouse click, a **context sensitive toolbar (2)** appears. From left to right, it is containing the following controls: *Edit cell*, *edit image*, *crop image*, *rotate image by 90°*, *mirror image* and *set cell size*. The lever in the middle of the cell is used to **rotate (1)** the cell or the image respectively. Using a *Free* layout template, image cells can be manually arranged, resized and rotated by the user. The *Grid* and *Pack* templates, in contrast, have fixed image cells.



Editing an image cell

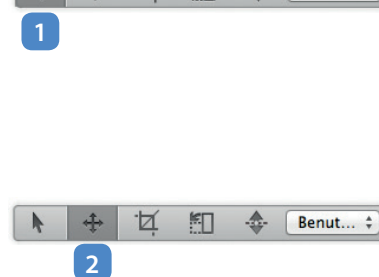
The **Edit cell mode (1)** is used to resize, rotate and move the complete image cell on the print media. Image quality effects of any resizing will be immediately indicated by the background color of the slider control. An image cell is resized, while maintaining its image's proportions, by moving its corner handles or its slider control. An image cell is moved on the print media by dragging it with the mouse. Any change in position and size can be tracked in the *Cell properties* palette. The text fields can be used to enter exact numerical values.

Editing an image

In edit **image mode (2)**, the controls are very similar to the controls in **edit cell mode (1)**. The image cell is fixed in position and the editing affects the image inside this cell. In this case, moving the control slider resizes the image inside the cell, while the cell size itself remains the same. Again, the slider's background color indicates the print quality regarding image resolution.

Cropping an image

In **crop image mode (3)**, the image is not resized when resizing the cell, like it is in **edit cell mode (1)**. Thus, resizing the cell in crop image mode is used to crop the image, while not changing the print quality. Like in **edit image mode (2)**, the image can be rotated and moved inside the cell using the mouse in order to find the right image detail.

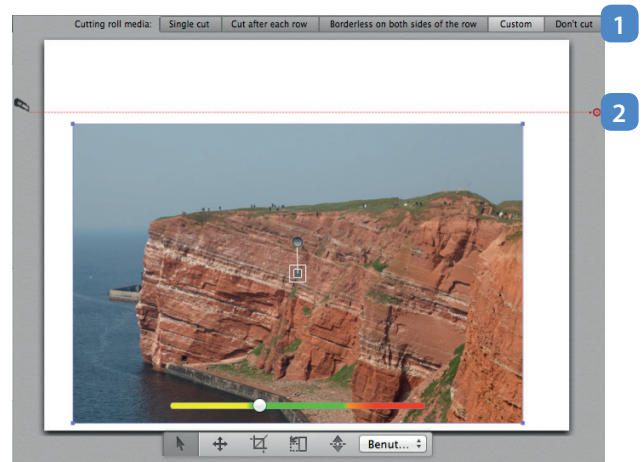


Rotating and flipping an image

In **edit cell mode (1)**, the **rotate tool (4)** rotates the cell by 90° clockwise. In **edit image mode(2)** and in **crop image mode(3)**, it rotates the image inside the cell. Holding down the [shift] key, results in a rotation by 90° counterclockwise. The **mirror tool (5)** flips the image horizontally. Holding down the [shift] key, results in a vertically flipping.

Cutting options for roll paper

If the selected *Paper Source* is *Roll*, PrinTao 8 displays an additional toolbar containing **cutting options (1)** right above the central working area. This toolbar is used to define, if and where the printer will cut the roll paper. The option *Single Cut* adds a single cut mark at the end of the document, while *Cut after each row* sets cut marks just below every row of image cells. The option *Borderless on both sides of the row* in addition adds a cut mark right above each row, resulting in a print of image cell rows without top and bottom borders. User defined cut marks are set using the *Custom* option. Using this option, a single cut mark is per default placed below the first row. It can be moved up or down, by moving the cutter icon on the left or the cut line itself. A click on the red circle icon on the right, adds a new **cut mark (2)**. Cut marks can also be added by right-clicking at the desired location. Right-clicking on an existing cut mark will delete it. The option *Don't cut*, will set no cut marks at all.



Horizontal toolbar



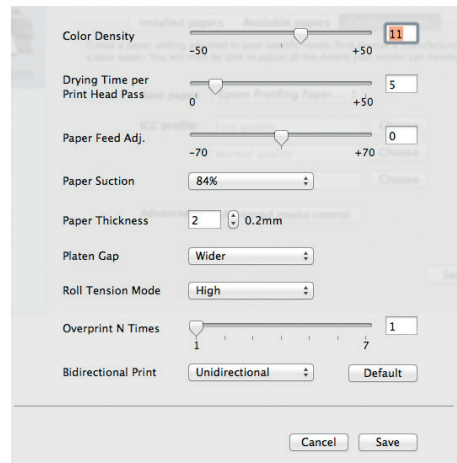
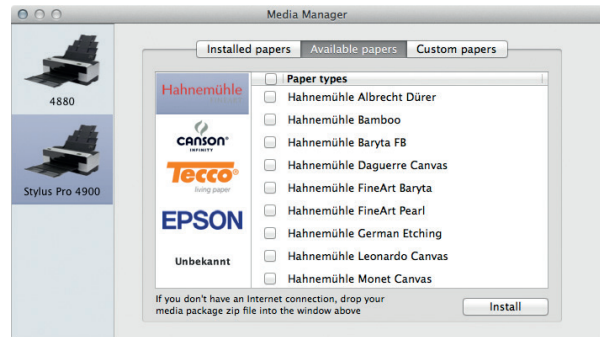
Important functionalities, which are also found at other places, are gathered together in the horizontal toolbar, for making them quickly available. The following three features are of special interest:

The **Metadata (1)** option allows to include image *file names* and/ or *creation dates* with the print. If one of these options is checked, this information will be added to the lower left corner of each image cell.

Using the **Zoom (3)** buttons, the display size of the central working area can be adjusted. The **“Fit to window” (4)** options sets the zoom to a level, the whole print media fits completely into the central working area window. Zooming in and out step by step is done using the magnifying glass buttons showing **plus (7)** and **minus (5)** symbols, while the magnifying glass button in the **middle (6)**, sets the zoom to 100%.



The **Media Manager (2)** manages the profiles for all installed or available papers. Reducing the *Installed papers* to the set of papers, which are actually used, could lead to a clearer arrangement for the *Paper* drop-down menu in the *Print* palette. Checked papers in the *Installed papers* tab are removed by clicking the *Uninstall* button. Additional papers available for the selected printer can be easily added in the *Available papers* tab. Checked papers are added by clicking the *Install* button. The *Custom papers* tab manages user specified papers. For adding a custom paper, initially, a *Basic paper* with similar properties should be selected. User defined *ICC profiles* and the *Advanced settings* are the next steps to *Save* a custom paper, which takes the specific combination of printer and paper into account. This selection of installed and custom papers is adjusted for each available printer separately. The printer is selected in the left column.



Preferences

The *General* tab defines, whether PrinTao 8 uses *Inch* or *Centimeter* as measuring unit. An alignment help can be activated in the *Rulers* tab. If the options *Snap to object center* and *Snap to object edges* are checked, an image cell will automatically snap into place, when moved near to a center axis or edge of another cell. The color of the alignment guides can be individually set. The *Printer* tab allows to add or remove printer (see chapter “Install Printers”).

