

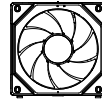
**Package Contents / 包裝內容物**



x 4 pcs

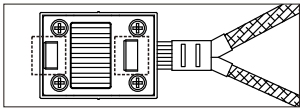


x 1 pc

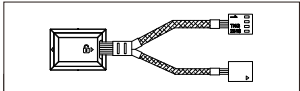


x 1 pc

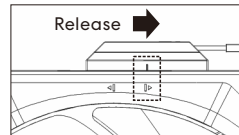
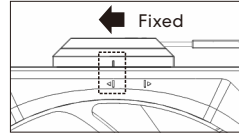
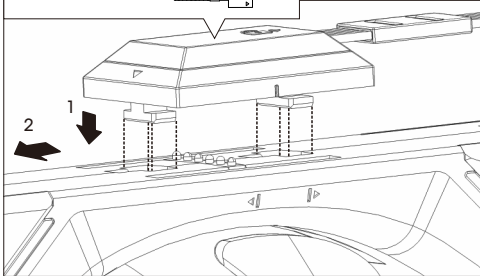
**Power Module Installation / 電源片安裝**



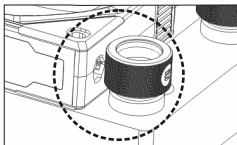
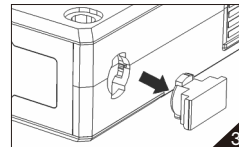
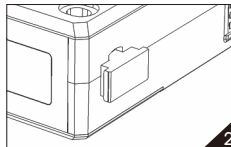
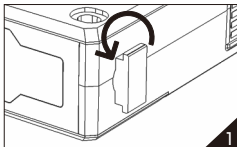
Note! The socket for the power module are in different size, please be aware of the direction.



注意! 電源片分為大小兩種卡榫，安裝時須注意方向性。



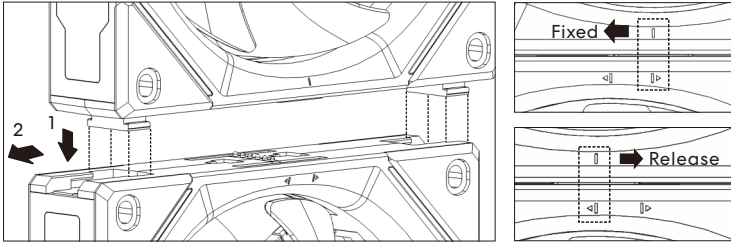
**Remove the Fan Interlocking Key / 風扇扣鎖拆除**



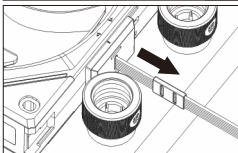
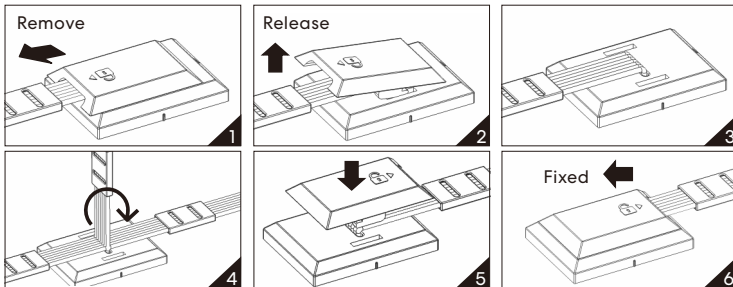
Note! The fan interlocking key is removable if it is affected by the radiator inlet and outlet.

注意! 若遇到水冷排出水位影響風扇扣鎖，可將風扇卡扣鎖移除。

## Fan to Fan Connection / 風扇連接風扇



## Steps to Switch Orientation of the Cable on the Power Module / 電源片電線轉換方向示意



Note! The top cover is removable if it is affected by the radiator inlet and outlet, and route the cable vertically.  
 注意! 若遇到水冷排水位置影響電源片上蓋, 可將上蓋移除, 以垂直方式走線。

## Power Module to Motherboard connection / 電源片連接主板

