

UNIVERSAL SOUNDBAR BRACKETS FOR TV AND WALL MOUNTING



HAVE QUESTIONS?

Monday - Friday from 8:00am - 4:00pm PST



support@mount-it.com



(855) 925-5668



www.mount-it.com

Thank you for choosing Mount-It!!

EN Read the entire instruction manual before you start installation and assembly. If you have any questions regarding any of the instructions or warnings, please contact Mount-It! for assistance.

- CAUTION:** Use with products heavier than the rated weights indicated may result in instability causing possible injury.
- Mounts must be attached as specified in assembly instructions. Improper installation may result in damage or serious personal injury.
 - Safety gear and proper tools must be used. This product should only be installed by professionals.
 - Make sure that the mounting surface will safely support the combined weight of the equipment and all attached hardware and components.
 - Use the mounting screws provided and DO NOT OVER TIGHTEN mounting screws.
 - This product contains small items that could be a choking hazard if swallowed. Keep these items away from children.
 - This product is intended for indoor use only. Using this product outdoors could lead to product failure and personal injury.

IMPORTANT: Ensure that you have received all parts according to the component checklist prior to installation. If any parts are missing or faulty, telephone Mount-It! for a replacement.

MAINTENANCE: Check that the bracket is secure and safe to use at regular intervals (at least every three months).

DE Bitte vor Beginn der Montage und Zusammenbau das ganze Handbuch durchlesen. Bitte sich mit dem Händler vor Ort bei Fragen zur Anleitung oder Warnungen in Verbindung setzen.

- VORSICHT:** Bei Verwendung mit Produkten, die das zulässige Gewicht überschreiten, können Schäden oder möglicherweise Verletzungen die Folge sein.
- Halterungen sollen entsprechend den Montageanweisungen angebracht werden. Eine unsachgemäße Montage kann Schäden oder Verletzungen zur Folge haben.
 - Sicherheitsausrüstung und geeignete Werkzeuge verwenden. Die Montage des Produktes sollte nur von Fachleuten durchgeführt werden.
 - Die tragenden Oberflächen sollten das gesamte Gewicht von Geräten und allen zusätzlichen Bauteilen sicher aushalten können.
 - Nur die mitgelieferten Einbauschrauben verwenden und die Schrauben NICHT ZU FEST ANZIEHEN.
 - Dieses Produkt enthält Kleinteile, die Erstickungsgefahr beim Verschlucken hervorrufen können. Diese Teile von Kindern fernhalten.
 - Dieses Produkt nur in Innenräumen verwenden. Verwendung des Produktes im Außenbereich kann zu Verletzungen und Schäden führen.

WICHTIG: Vor der Montage bitte alle erhaltenen Bauteile mit der Bauteileliste abgleichen. Bei beschädigten oder fehlenden Teilen den Händler vor Ort nach Ersatzteilen fragen.

WARTUNG: Die Halterungsklammer regelmäßig auf Sicherheit und Stabilität prüfen (am besten alle drei Monate).

FR Lisez entièrement le guide d'utilisateur avant de commencer l'installation et le montage. Si vous avez des questions concernant les instructions ou les avertissements, veuillez contacter votre distributeur local pour une assistance.

- ATTENTION:** L'utilisation de produits plus lourds que les poids nominaux indiqués peut entraîner une instabilité causant des blessures potentielles.
- Les supports doivent être joints comme spécifié dans les instructions de montage. Une mauvaise installation peut entraîner des dommages ou de graves blessures aux personnes.
 - Un équipement de sécurité et les outils appropriés doivent être utilisés. Ce produit devrait être installé uniquement par des professionnels.
 - Assurez-vous que la surface de soutien supporte le poids combiné de l'équipement et de tous les matériaux et composants associés.
 - Utilisez les vis de montage fournies et NE SERREZ PAS TROP les vis de montage.
 - Ce produit contient de petites pièces qui peuvent causer un étouffement si elles sont avalées. Éloignez ces pièces des enfants.
 - Ce produit est prévu uniquement pour une utilisation à l'intérieur. L'utilisation de ce produit à l'extérieur peut entraîner un défilage du produit ou des blessures aux personnes.

IMPORTANT: Avant l'installation, assurez-vous que vous avez reçu toutes les pièces selon la liste de vérification des composants. Si une pièce est manquante ou endommagée, téléphonez à votre distributeur local pour qu'il la remplace.

MAINTENANCE: A intervalles réguliers (au moins tous les trois mois) vérifiez que le support est d'utilisation sûre et fiable.

RU Перед началом установки и сборки прочитайте руководство по установке. Если у Вас возникли какие-либо вопросы относительно инструкции или предупреждений, свяжитесь с Вашим локальным дистрибутором для получения помощи.

- Внимание:** Использование продуктов, вес которых превышает указанный расчетный вес, может привести к нестабильности и возможным повреждениям.
- Опоры должны быть установлены, как это показано в монтажных инструкциях. Неправильная установка может привести к получению серьезных травм.
 - Необходимо использовать предохранительное устройство и специальные инструменты. Продукт должен устанавливаться только профессионалами.
 - Убедитесь, что несущая поверхность выдержит вес оборудования и всего установленного оборудования и комплектующих.
 - Необходимо использовать идущие в комплекте установочные шурупы и НЕ ПЕРЕТЯГИВАТЬ установочные шурупы.
 - Данный продукт содержит мелкие детали, которые представляют опасность удушья при проглатывании. Такие детали необходимо хранить в недоступном для детей месте.
 - Данный продукт предназначен только для эксплуатации в помещениях. Использование данного продукта на улице может привести к поломке продукта и получению травм.

ВАЖНО: Перед установкой убедитесь, что Вы получили все детали в соответствии со списком комплектующих. Если не хватает каких-либо деталей или они повреждены, свяжитесь с Вашим местным дистрибутором по вопросу замены.

ТЕХНИЧЕСКОЕ ОБСЛУЖИВАНИЕ: Необходимо регулярно проверять (как минимум, раз в три месяца), чтобы кронштейн был зафиксирован, и его использование было безопасным.

ES Lea todo el manual de instrucciones antes de comenzar la instalación y ensamblaje de la unidad. Si tiene alguna inquietud con respecto a las instrucciones o advertencias, comuníquese con su distribuidor local.

- PRECAUCIÓN:** utilizar con productos de mayor peso al indicado en los límites de peso podría ocasionar inestabilidad y posibles heridas personales.
- Los soportes deben acoplarse tal como se indica en las instrucciones de ensamblaje. Una incorrecta instalación podría ocasionar daños y serias heridas personales.
 - Utilice las herramientas y equipo de seguridad adecuados. Este producto solo debe ser instalado por profesionales.
 - Asegúrese de que la superficie de fijación sostenga de manera segura el peso total del equipo y todos sus componentes y hardware.
 - Utilice los tornillos de ensamble suministrados y NO aplique demasiada tensión a los tornillos.
 - Este producto contiene piezas pequeñas que representan un riesgo de asfixia. Mantenga estas piezas fuera del alcance de los niños.
 - Este producto está diseñado para uso en interiores solamente. Utilizar este producto en exteriores podría ocasionar fallas y heridas personales.

IMPORTANT: Asegúrese de que haya recibido todas las piezas según la lista de verificación de componentes para la instalación. Si falta alguna de las partes, o está dañada, comuníquese con su distribuidor.

MANUTENIMIENTO: Compruebe periódicamente que el soporte esté asegurado y listo para usar (al menos cada tres meses).

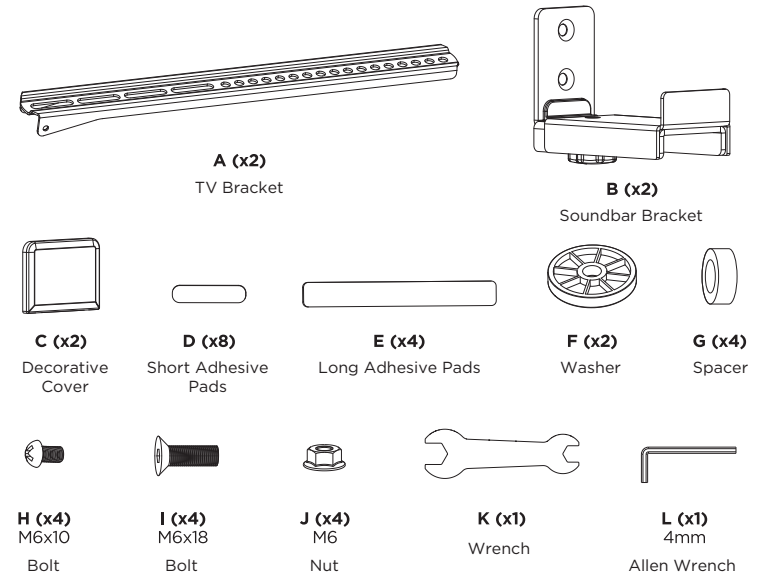
PT Leia todo o manual de instruções antes de iniciar a instalação e montagem. Se você tiver alguma dúvida sobre quaisquer uma das instruções ou avisos, por favor, entre em contato com o seu distribuidor local para assistência.

- ATENÇÃO:** O uso com produtos mais pesados do que os pesos indicados pode resultar em instabilidade, causando possíveis danos.
- Os suportes devem ser anexados como especificado nas instruções de montagem. A instalação incorreta pode causar danos ou sérias lesões pessoais.
 - Equipamentos de segurança e ferramentas adequadas devem ser utilizadas. Este produto só deve ser instalado por profissionais.
 - Certifique-se que a superfície de suporte suportará com segurança o peso combinado do equipamento e todas as ferragens e componentes anexados.
 - Use os parafusos de montagem fornecidos e NÃO APERTE EXCESSIVAMENTE os mesmos.
 - Este produto contém pequenas peças que podem causar asfixia se ingeridas. Mantenha esses itens longe do alcance de crianças.
 - Este produto destina-se somente para uso interno. Usá-lo em ambiente externo pode causar falhas no produto e lesões pessoais.

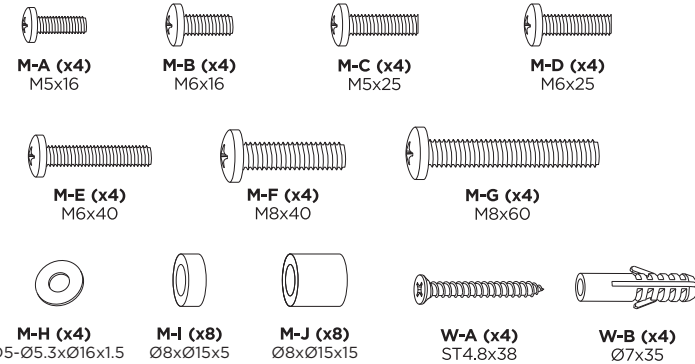
IMPORTANT: Assegure-se que você recebeu todas as peças, de acordo com a lista de componentes, antes da instalação. Se alguma peça estiver faltando ou é defeituosa, contate o seu distribuidor local para substituição.

MANUTENÇÃO: Certifique-se que o suporte seja seguro e protegido para o uso em intervalos regulares (pelo menos a cada três meses).

PACKAGE CONTENTS



SOUNDBAR BRACKETS HARDWARE



Check carefully to make sure there are no missing or defective parts. Some hardware provided may not be used. Use the correct hardware suitable for your installation.

CHOKING HAZARD. Package includes small parts. Not for children under 3 years. Adult supervision is required.

Missing Parts? Call us at (855) 925-5668 and we will ship replacement parts free of charge.

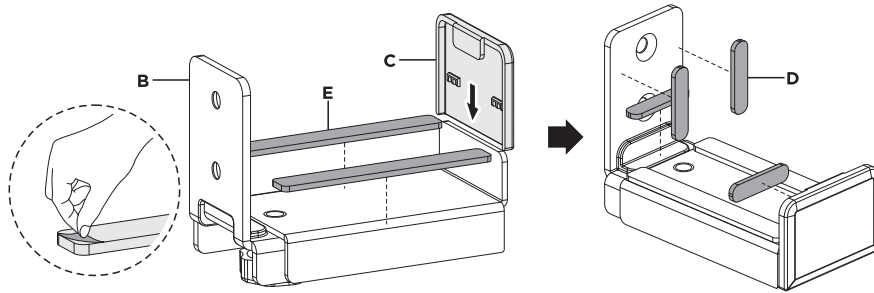


Mounting the Soundbar Directly to the Wall

Step 1a

Installing Pads and Cover

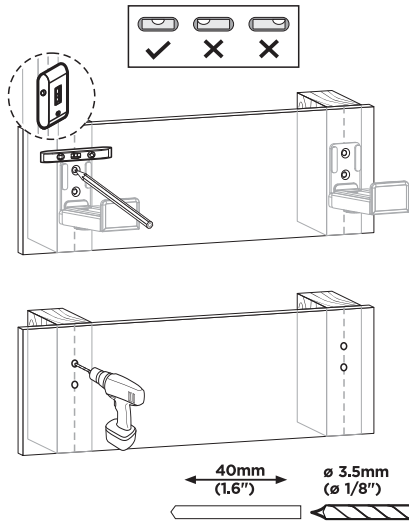
• Begin by removing the backing from two of the Long Adhesive Pads (E) and installing them as shown onto the Soundbar Bracket (B). Slide Decorative Cover (C) onto the shorter end of the Soundbar Bracket (B). Next remove the backing from 4 of the Short Adhesive Pads (D) and install them as shown. Repeat this step for the second Soundbar Bracket (B).



Step 2a

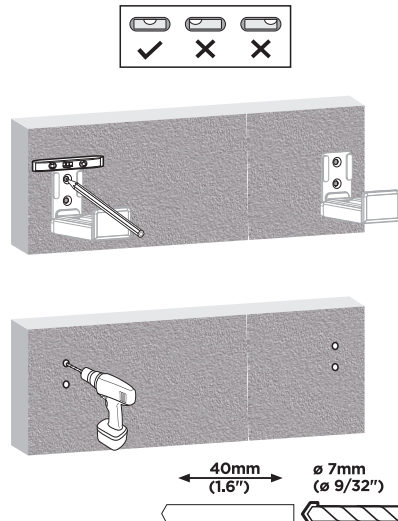
Drilling Mounting Holes

Stud Mounting Option



• Locate the center of the studs with a stud finder, then using a bubble level to ensure straightness mark the center of the two bolt holes on the Soundbar Brackets (B). Drill the mounting hole using a 1/8" drill bit and drill to a depth of 1.6".

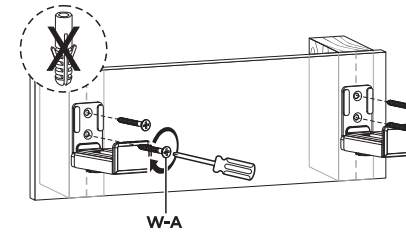
Concrete Mounting Option



• Choose the desired location on your wall and using a bubble level to ensure straightness mark the center of the two bolt holes on the Soundbar Brackets. Drill the mounting hole using a 9/32" drill bit and drill to a depth of 1.6".

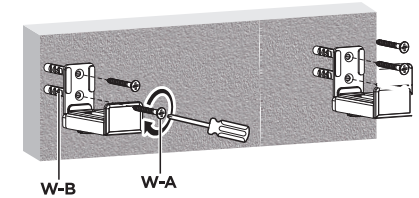
Step 3a

Wall Stud Installation



• Install Soundbar Brackets (B) using Lag Screws (W-A) and a Philips head screwdriver. Tighten until secure. Do not use concrete anchors.

Concrete Installation

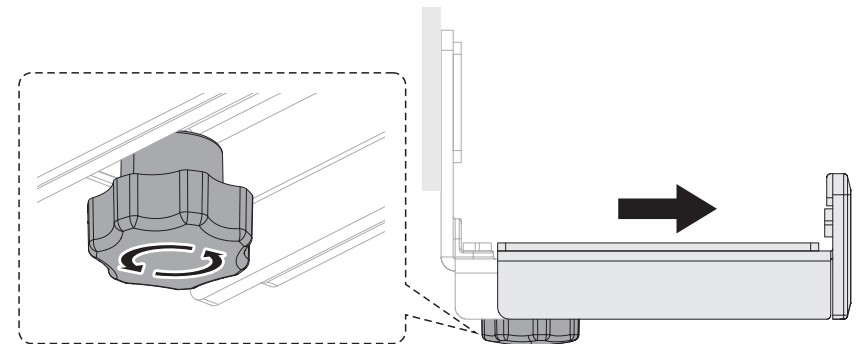


• Clear dust and debris from the drilled holes then insert Concrete Anchors (W-B) until they are flush with the wall. Install the Soundbar Brackets (B) using Lag Screws (W-A) and a Philips head screwdriver. Tighten until secure.

Step 4a

Adjusting the Soundbar Bracket Depth

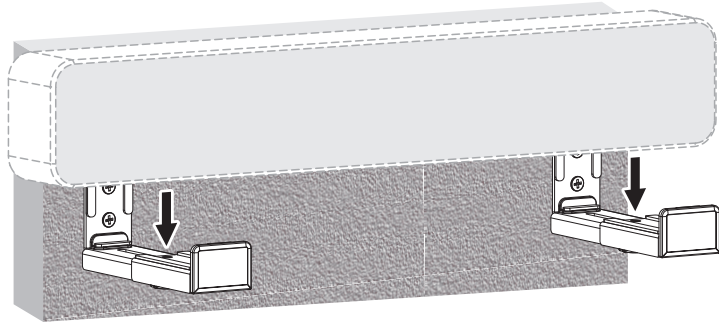
• Soundbar Brackets (B) can be adjusted to fit various soundbar sizes. To adjust the depth, turn the hand knobs located under the Soundbar Brackets (B) counterclockwise and pull the end of the bracket away from the wall.



Step 5a

Inserting the Soundbar into the Mount

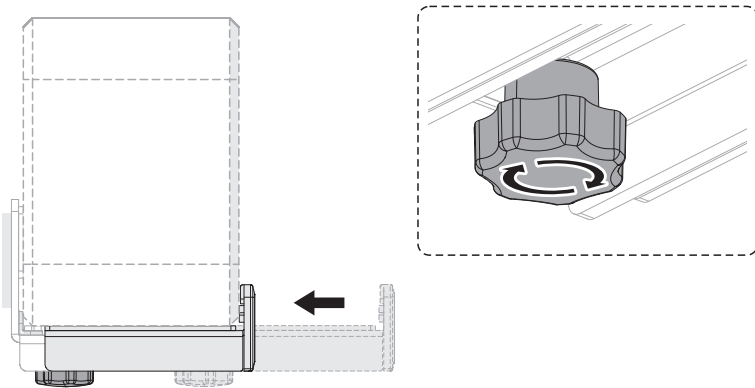
- Once the brackets are expanded enough to fit your device, place the soundbar on top of the brackets as shown.



Step 6a

Securing the Soundbar into the Mount

- Push the extended ends of the brackets back in until they are snugly holding the soundbar in place. Turn the knobs clockwise to tighten the Soundbar Brackets (B) in place.

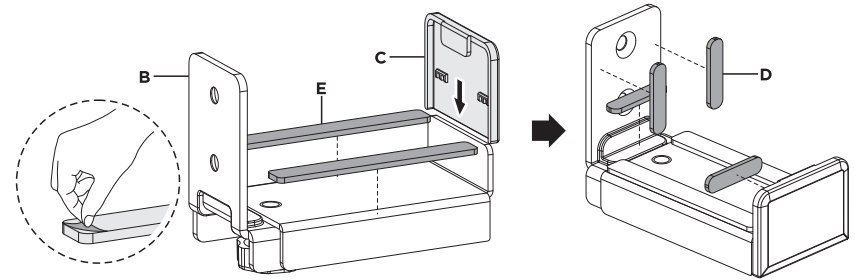


Mounting the Soundbar to a TV

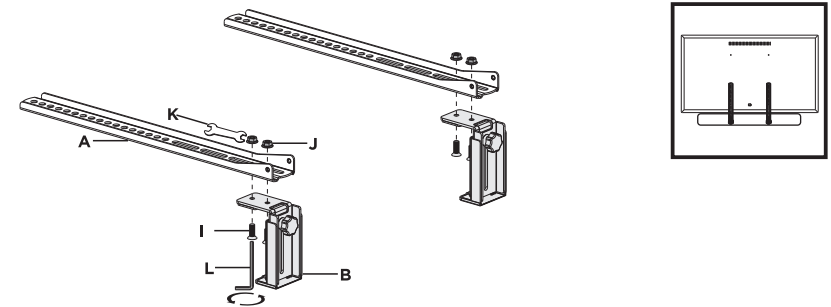
Step 1b

Installing Pads and Cover

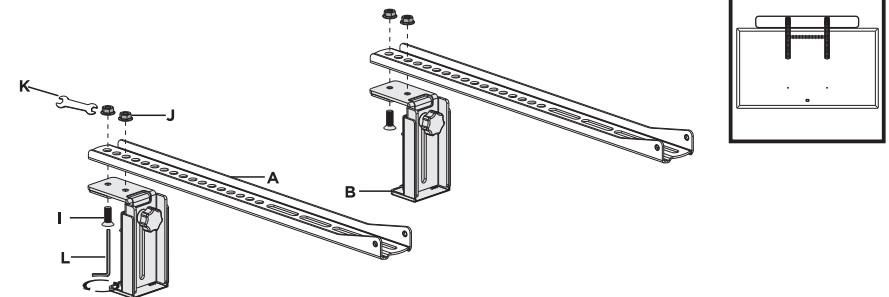
- Begin by removing the backing from two of the Long Adhesive Pads (E) and installing them as shown onto the Soundbar Bracket (B). Slide Decorative Cover (C) onto the shorter end of the Soundbar Bracket (B). Next remove the backing from 4 of the Short Adhesive Pads (D) and install them as shown. Repeat this step for the second Soundbar Bracket (B).



Mounting the Soundbar below the TV



Mounting the Soundbar above the TV

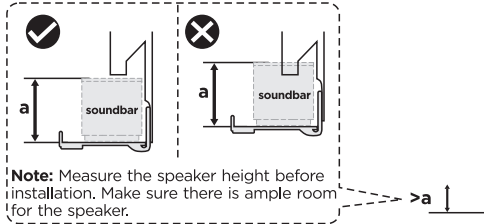


- Choose whether you will have your soundbar mounted above or below your TV screen and follow the above configurations. Connect TV Brackets (A) to Soundbar Brackets (B) using Flathead Bolts (I) and Nuts (J) as shown. Tighten using Allen Wrench (L) with Wrench (K) on the other side to hold the nuts in place.

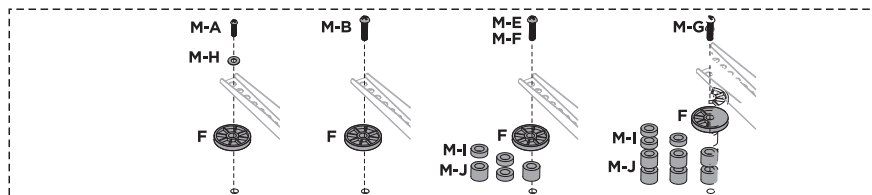
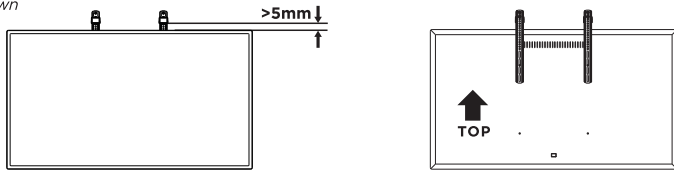
Step 2b

Connecting the Bracket to the TV

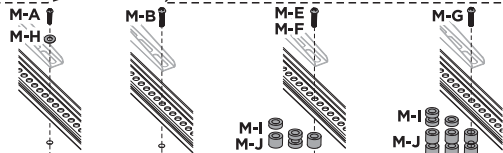
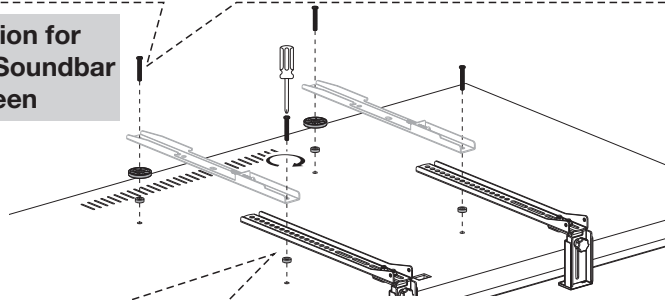
- Select the appropriate size mounting bolt (M-A through M-G) for your display's mounting holes and verify the length of the VESA bolt is not too long. If you are unsure of the correct bolt size for your display, refer to your TV user manual or contact the TV manufacturer for sizing information. If necessary, use the included spacers (M-H, M-I) between the mount and the TV as shown above to adjust the length of the mounting bolt. Multiple spacers can be used in combination to achieve the desired bolt depth. If Bolt (M-A) is required for your display, Washer (M-H) must also be used.
- This Soundbar Mount must be installed between the existing wall mount and the TV. Use washer (F) as shown in the below illustration on whichever 2 holes (upper or lower) that are not being used by the Soundbar Mount. Washer (F) provides equal amount of depth to match the depth of the Soundbar Brackets (B), allowing TV brackets to be vertically flat. Spacers (M-I) and/or (M-J) can be used beneath Washer (F) to adjust the depth, if the rear of your device is not an even mounting surface.



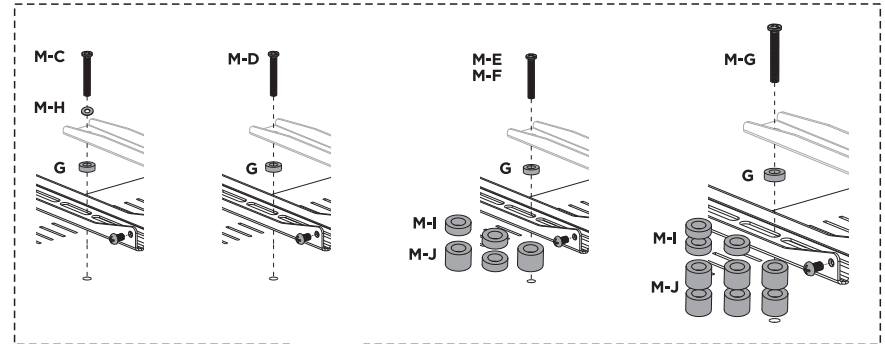
Note: When top mounting the soundbar, make sure there is ample room between the bracket and the TV as shown



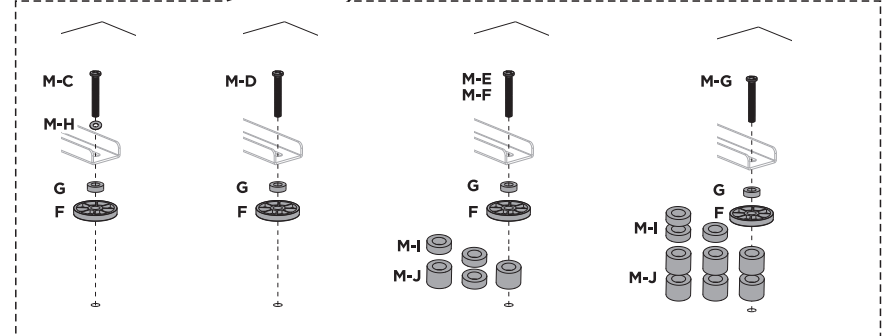
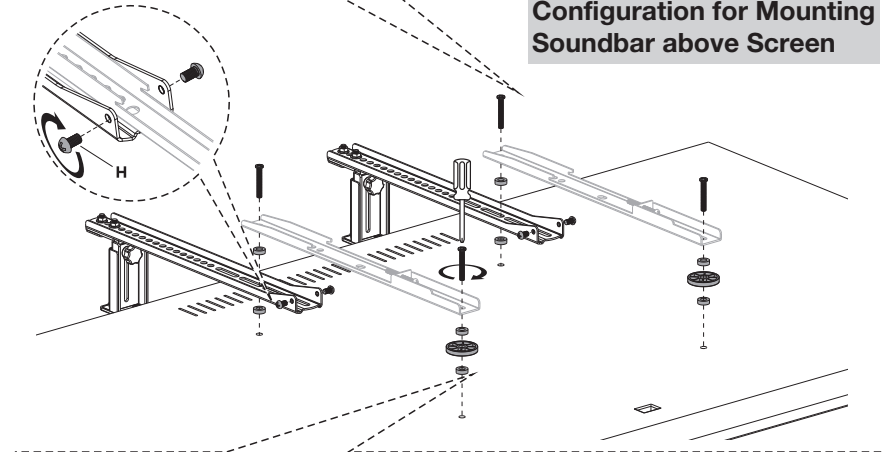
Configuration for Mounting Soundbar below Screen



- Select the appropriate size mounting bolt (M-A through M-G) for your display's mounting holes and verify the length of the VESA bolt is not too long. If you are unsure of the correct bolt size for your display, refer to your TV user manual or contact the TV manufacturer for sizing information. If necessary, use the included spacers (M-H, M-I) between the mount and the TV as shown above to adjust the length of the mounting bolt. Multiple spacers can be used in combination to achieve the desired bolt depth. If Bolt (M-A) is required for your display, Washer (M-H) must also be used.
- This Soundbar Mount must be installed between the existing wall mount and the TV. Use Washer (F) as shown in the above illustration on whichever 2 holes (upper or lower) that are not being used by the Soundbar Mount. Washer (F) provides equal amount of depth to match the depth of the Soundbar Brackets (B), allowing TV brackets to be vertically flat. Spacers (M-I) and/or (M-J) can be used beneath Washer (F) to adjust the depth, if the rear of your device is not an even mounting surface.



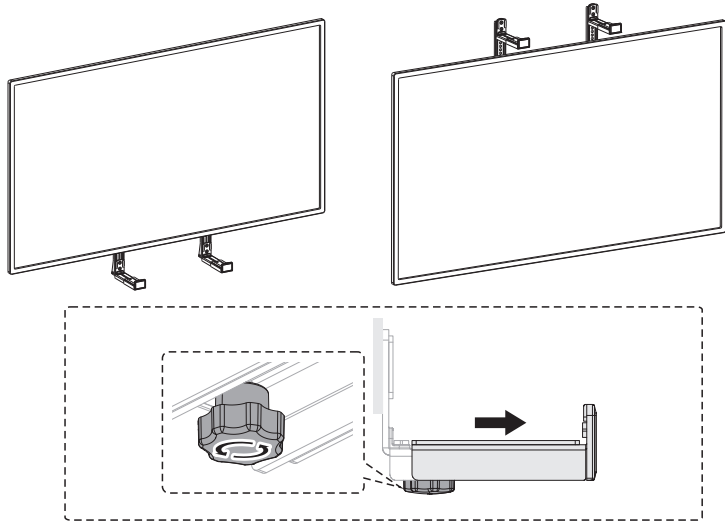
Configuration for Mounting Soundbar above Screen



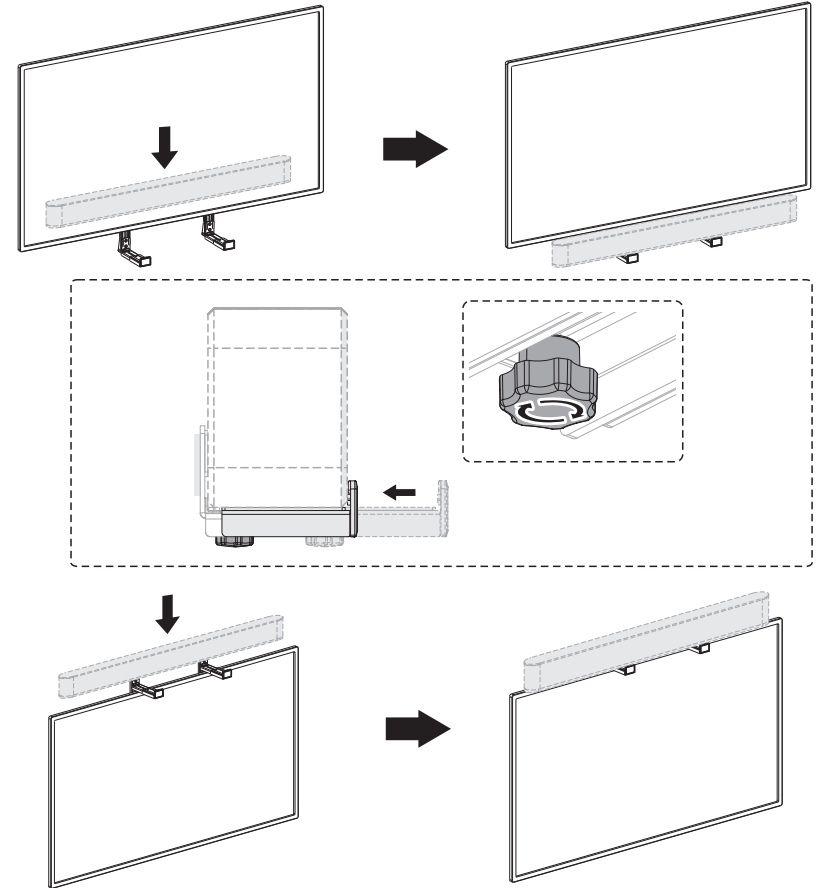
Step 3b

Securing the Soundbar into the Mount

- On the underside of both Soundbar Brackets (B) turn the hand knobs counterclockwise and pull the end of the bracket to expand them to a wider size allowing space to install your soundbar.



- Once the brackets are expanded enough to fit your device, place the soundbar on top of the brackets as shown. Next push the extended ends of the brackets back in until they are snugly holding the soundbar in place. Turn the knobs clockwise to tighten the soundbar bracket in place.



Visit us at www.mount-it.com for product registration and warranty information.

Our US based customer service team is standing by to answer any questions you have about your Mount-It! product.

Available by phone **Monday - Friday from 8:00am to 4:00pm** PST.

Chat live with an agent on our website!



support@mount-it.com



(855) 925-5668



www.mount-it.com