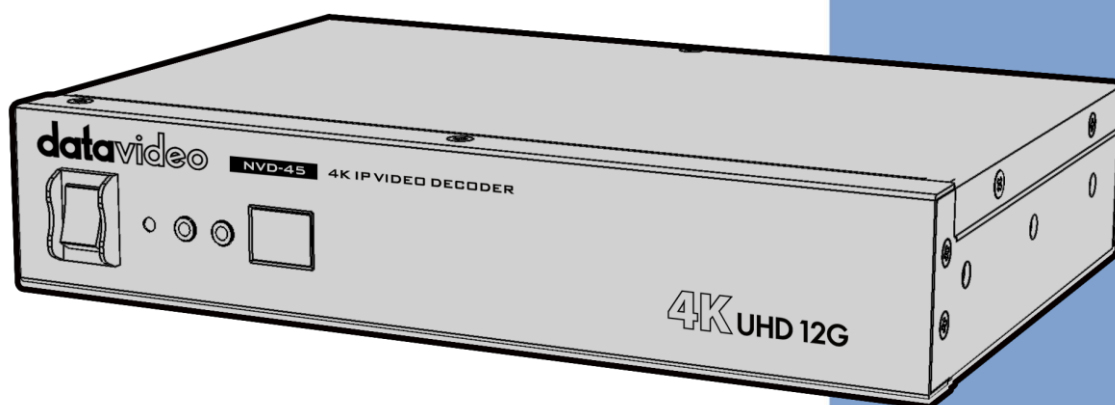


datavideo



4K SDI IP VIDEO DECODER
NVD-45

Service Manual

Revision:V1.0

2023/0914

www.datavideo.com

Chapter 1. System Disassembling Procedure.....3

Chapter 2. System assemblyProcedure.....9

Chapter 3.RMA Parts.....15

Chapter 4.PCBA and organization collocation.....18

Chapter 5.Circuit Diagram.....19

Chapter 1. System Disassembling Procedure



Remove the cover

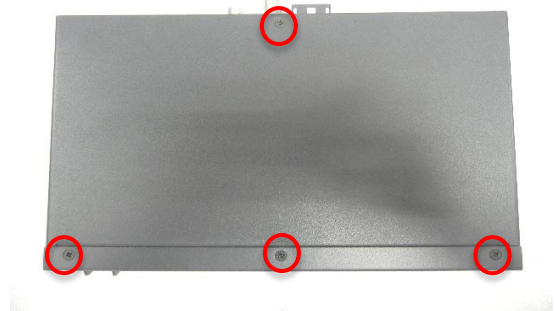
G0911D300511 ϕ 3.0*5m/m Screw*4



G09420655022 Top cover VP-655

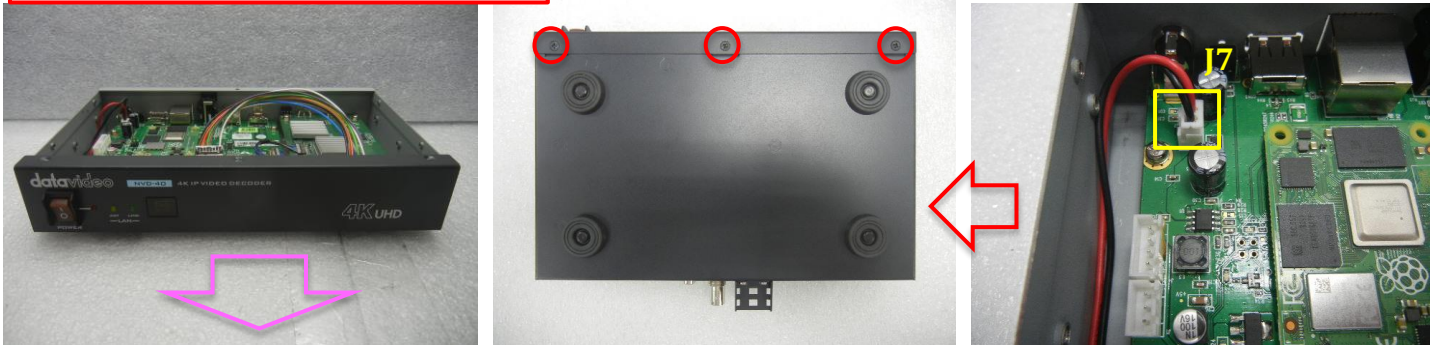


G0911D300511 ϕ 3.0*5m/m Screw*4



Remove the front panel and cable

G0911D300511 ϕ 3.0*5m/m Screw*3



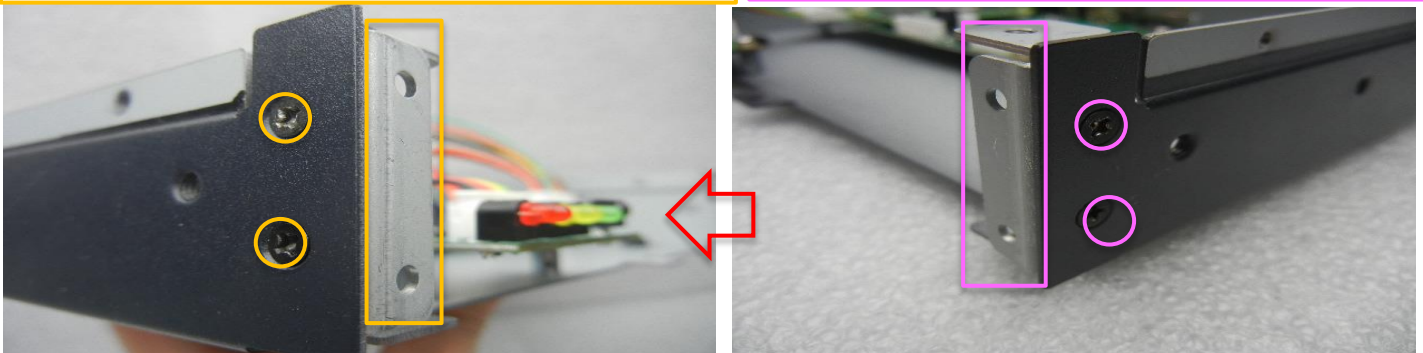
Remove the left and right reinforcing sheets and screws

G09200655011 Handle Reinforcing Sheet (Right)

G0911D300511 ϕ 3.0*5m/m Screw*2

G09200655021 Handle Reinforcing Sheet (Left)

G0911D300511 ϕ 3.0*5m/m Screw*2

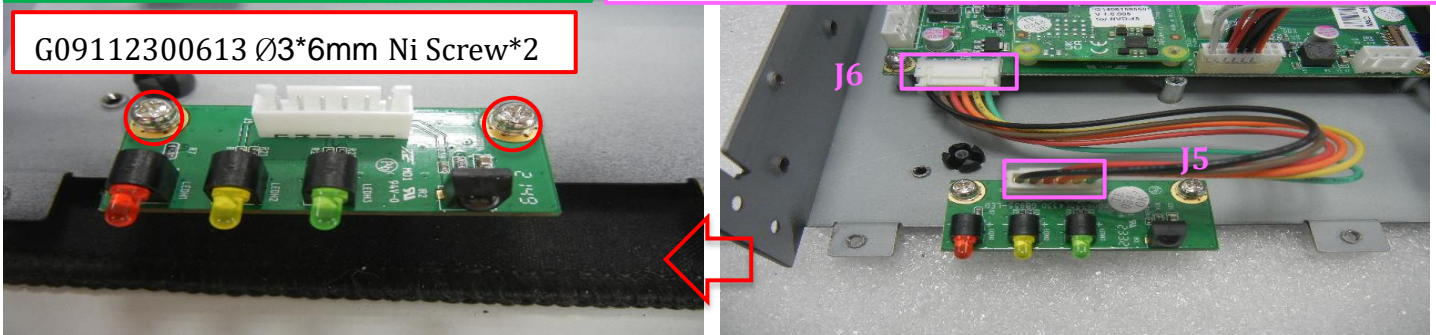


Remove the LED board and cable

GB955-LED VP-955 NVD-40 LED Board

G07310611502 6P Cable with Double Female P:2.5 22AWG L:150mm UL

G09112300613 ϕ 3*6mm Ni Screw*2

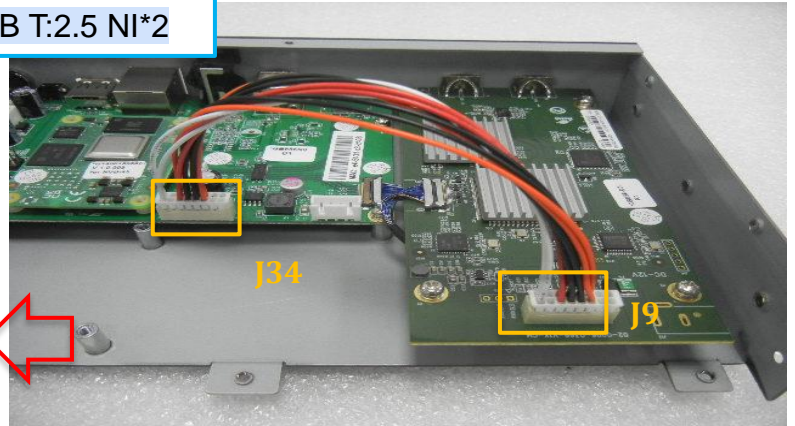


Remove the cable and sdi board Nut Washer

G07310611502 6P Cable with Double Female UL1007#22 L=150mm

G09130001585 Internal tooth washer $\varnothing 12.7 * 15.8 * 0.5t$ NI*2

G09120002290 Hex Nut 14HEX 1/2-28UNEF-2B T:2.5 NI*2



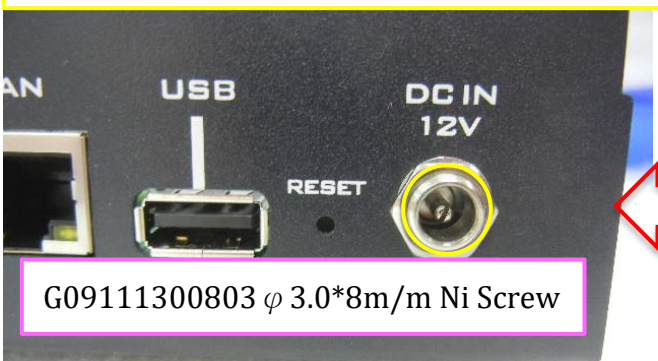
Remove the motherboard and SDI board DC Jack Nut Washer and rac screw

G09120801033 Nut M8*P0.75 Thick: 2.0 NI

G09130101816 Washer 10.9*8.10*0.5 NI

G09130001589 Internal tooth washer $\varnothing 12.7 * 15.8 * 0.5$ NI

G0912000228A Hex Nut Thickness: 2.5 NI



G09111300803 $\varnothing 3.0 * 8m/m$ Ni Screw



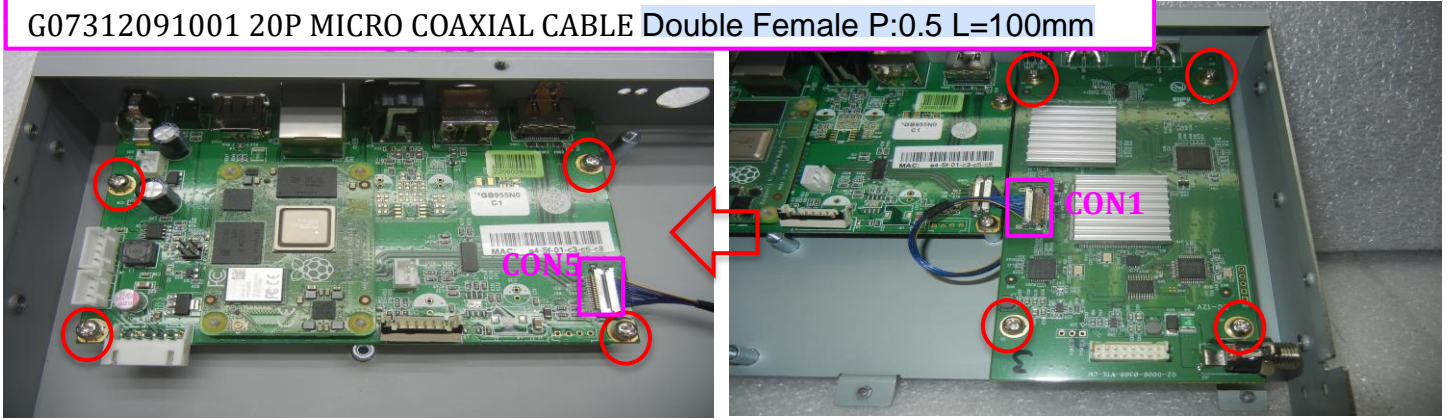
Remove the motherboard and SDI board and cable

G09112300613 Ø3*6mm Ni Screw*4

GB956-SDI VP-956 NVD-45 SDI board

G13309561201 VP-956 NVD-40 MB+RASPBERRY Pi COMPUTER MODULE

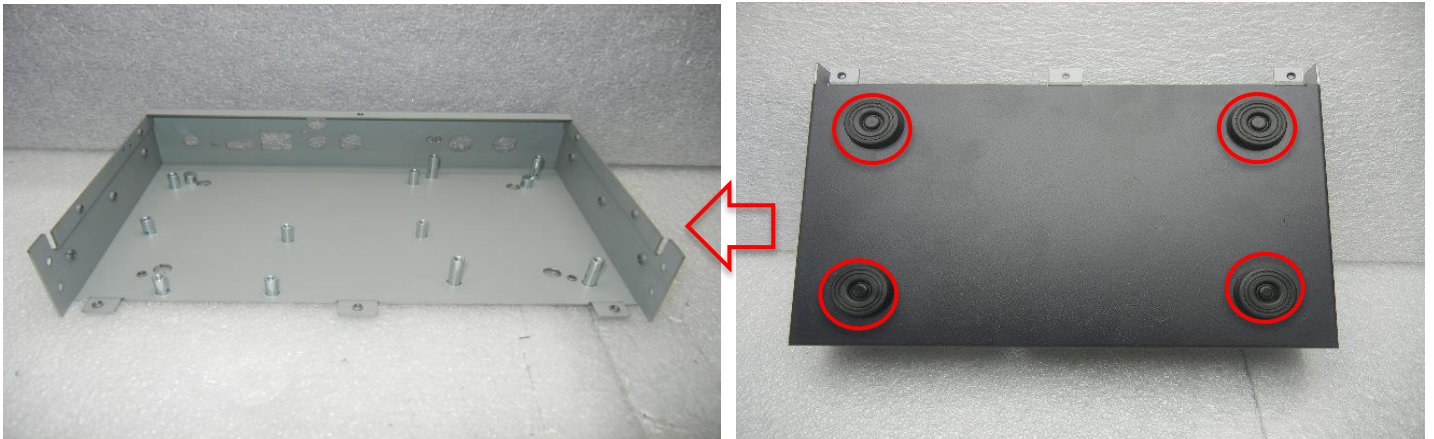
G07312091001 20P MICRO COAXIAL CABLE Double Female P:0.5 L=100mm



Remove the base and feet

G09220956021 Base VP-956

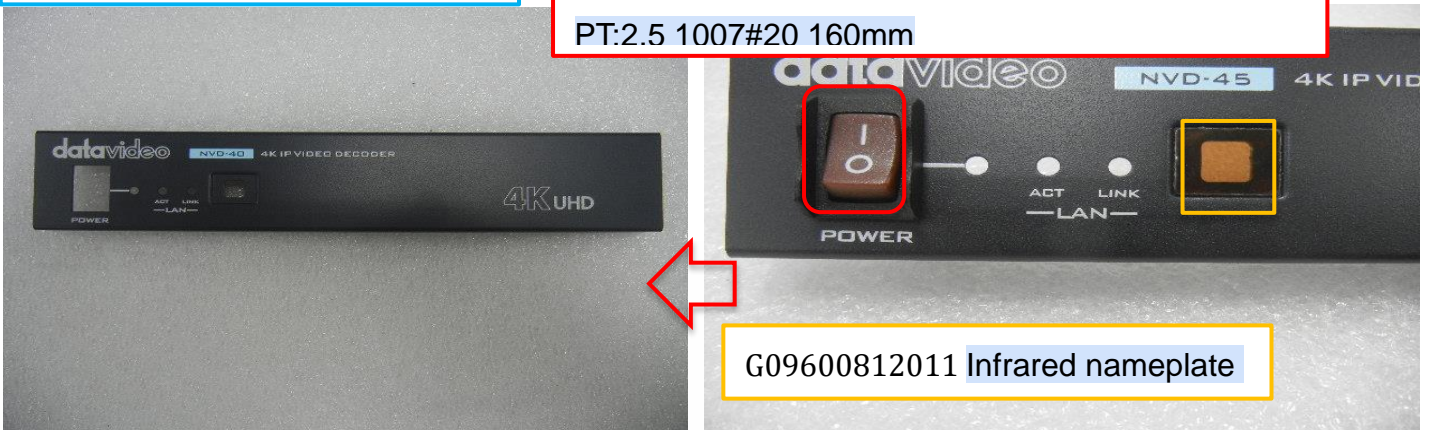
G09C00252813 Foot pad*4



Remove the front panel and Infrared nameplate and Power sw Cable

G09420956011 Front cover VP-956

G07310211603 2P cable to POWER SW black red
PT:2.5 1007#20 160mm



G09600812011 Infrared nameplate

Remove the Raspberry Pi and motherboard

G14061595501 RASPBERRY Pi COMPUTER
MODULE 4 1GB RAM 8GB eMMC for NVD-40/45

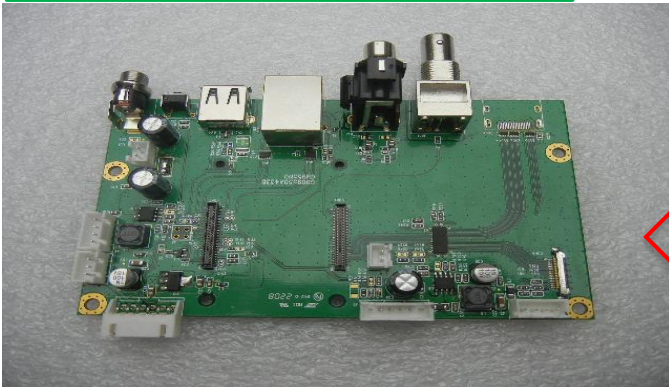


G13309561201 VP-955 NVD-45
MB+RASPBERRY Pi COMPUTER MODULE

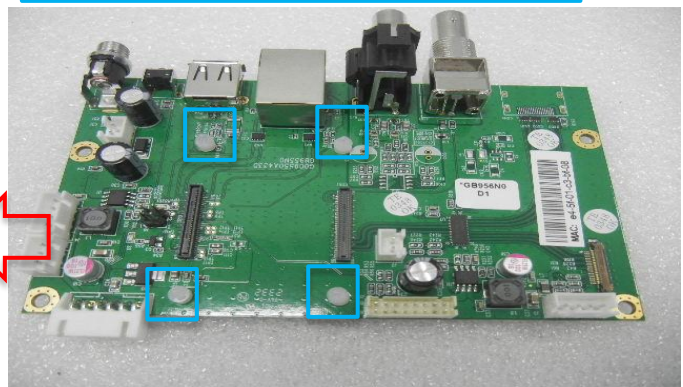


Remove the motherboard and spacer

GB956N0 VP-955 NVD-45 moter board



G09842500301 PC board spacers*4

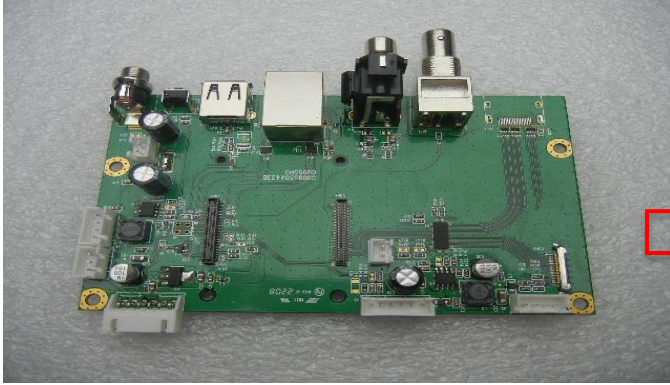


Chapter 2. System assembly Procedure

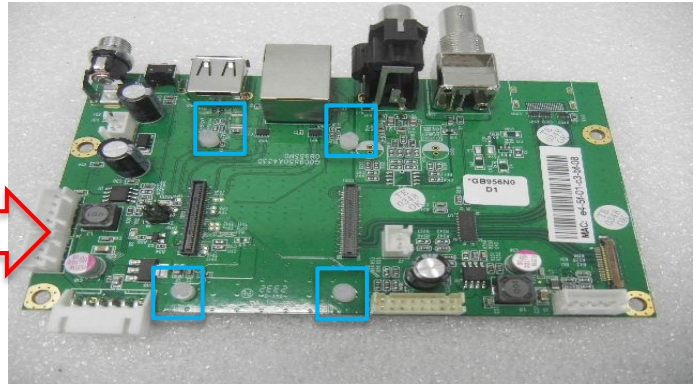
G13309561201 NVD-45 MB+RASPBERRY PI COMPUTER MODULE ASSEMBLY

Take the motherboard and install the spacer

G0956N0 VP-955 NVD-45 moter board



G09842500301 PC board spacers*4



Take the Raspberry Pi and install it on the motherboard

G14061595501 RASPBERRY Pi COMPUTER
MODULE 4 1GB RAM 8GB eMMC for NVD-40/45



G13309561201 VP-955 NVD-45
MB+RASPBERRY Pi COMPUTER MODULE

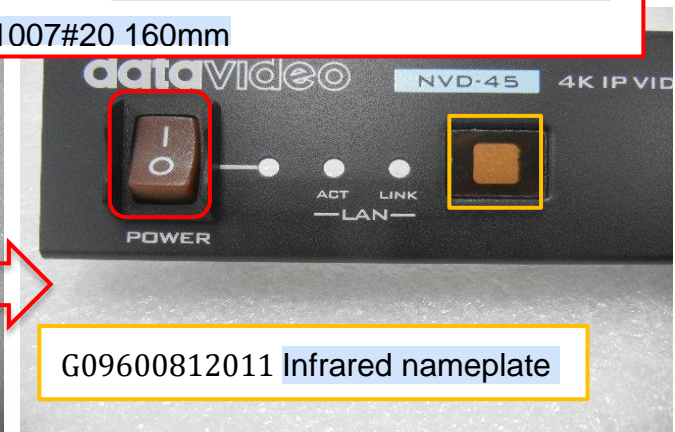


Take the front panel to install the Infrared nameplate and Power sw Cable

G09420956011 Front cover VP-956



G07310211603 2P cable to POWER SW black red
PT:2.5 1007#20 160mm



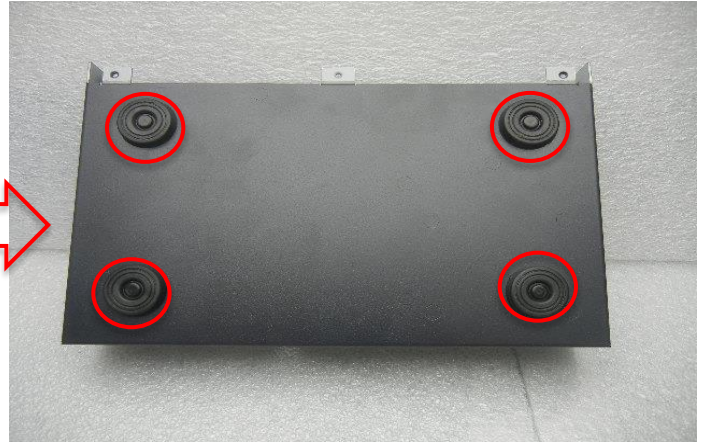
G09600812011 Infrared nameplate

Remove the base mounting feet

G09220956021 Base VP-956



G09C00252813 Foot pad*4



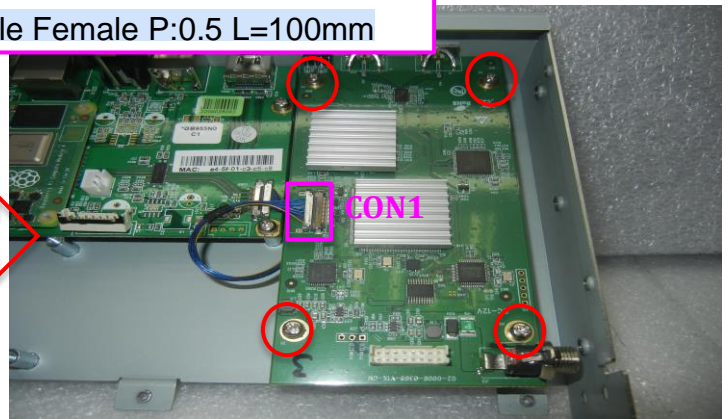
Lock the motherboard and SDI board and plug in the cable

G09112300613 $\varnothing 3 \times 6$ mm Ni Screw*4

GB956-SDI VP-956 NVD-45 SDI board

G13309561201 VP-956 NVD-40 MB+RASPBERRY Pi COMPUTER MODULE

G07312091001 20P MICRO COAXIAL CABLE Double Female P:0.5 L=100mm



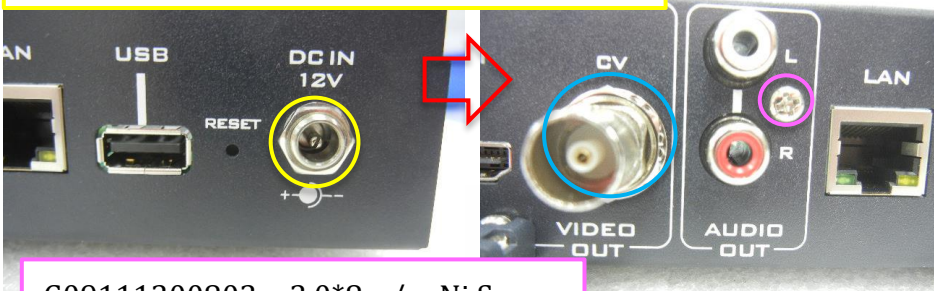
Lock the motherboard and SDI board DC Jack Nut Washer and rac screw

G09120801033 Nut M8*P0.75 Thick: 2.0 NI

G09130101816 Washer 10.9*8.10*0.5 NI

G09130001581 Internal tooth washer $\varnothing 12.7 \times 15.8 \times 0.5$ NI

G0912000228A Hex Nut 14HEX 1/2-28UNEF



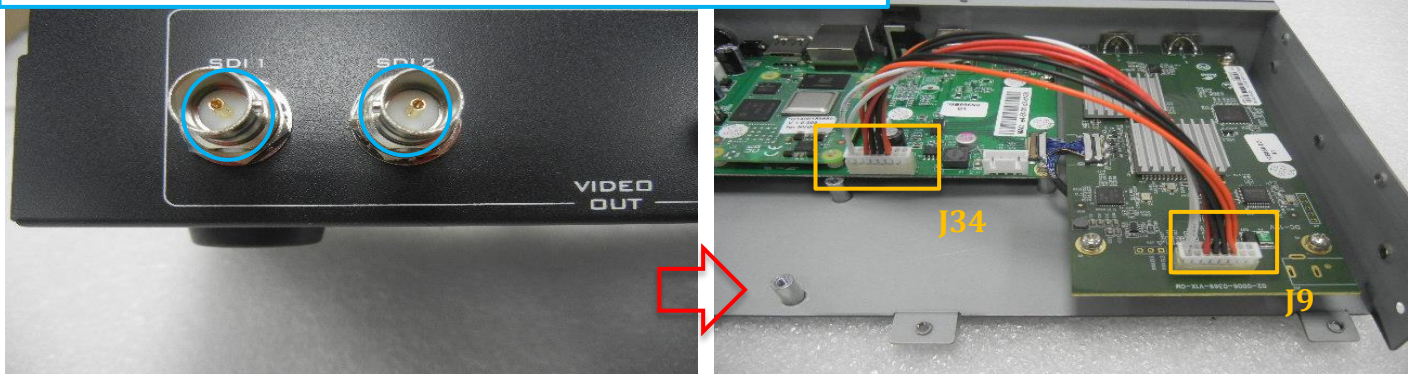
G09111300803 $\varphi 3.0 \times 8$ m/m Ni Screw

Lock the SDI board Nut and Washer and plug in the cable

G07311081502 10P(16H) cable with double female seat PT:2.0 1007#26 L:150mm

G09130001585 Internal tooth washer $\varnothing 12.7 * 15.8 * 0.5t$ NI*2

G09120002290 Hex Nut 14HEX 1/2-28UNEF-2B T:2.5 NI*2

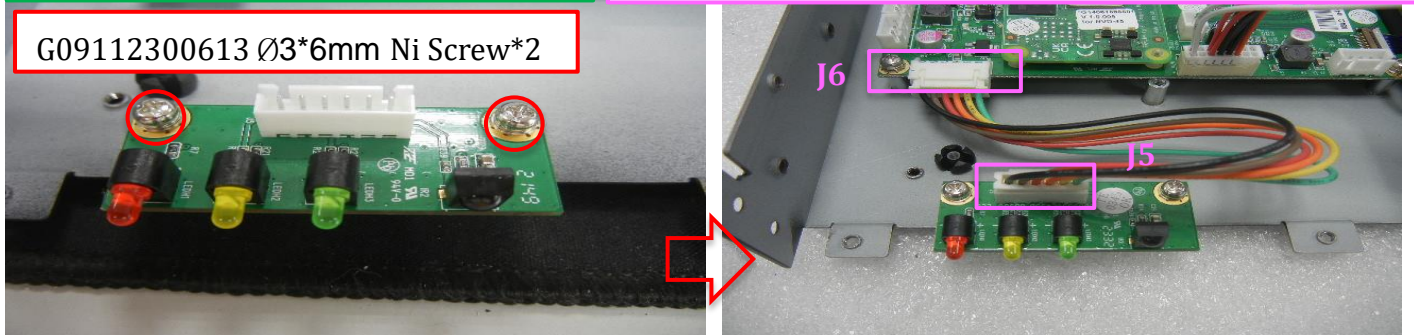


Lock the LED board and plug in the cable

GB955-LED VP-955 NVD-40 LED Board

G07310611502 6P Cable with Double Female P:2.5 22AWG L:150mm UL

G09112300613 $\varnothing 3 * 6mm$ Ni Screw*2



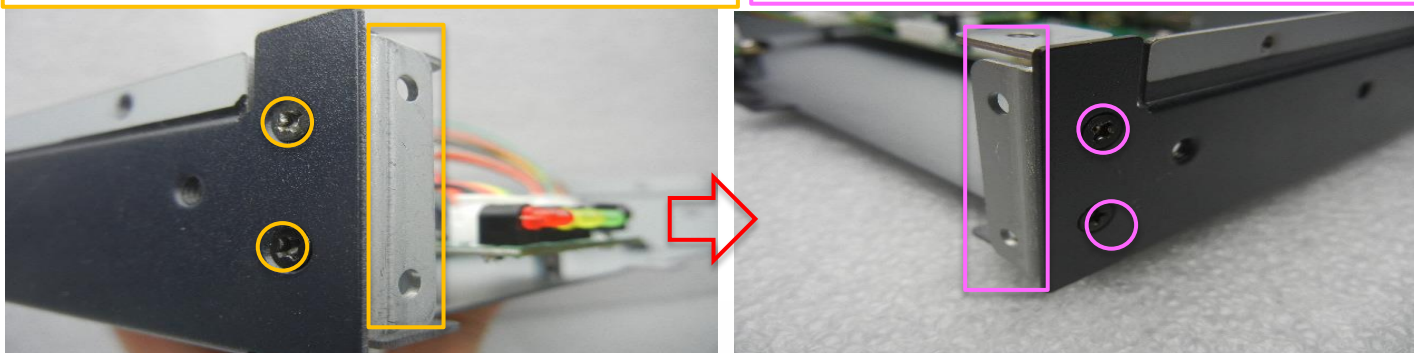
Lock the left and right reinforcing sheets and screws

G09200655011 Handle Reinforcing Sheet (Right)

G09200655021 Handle Reinforcing Sheet (Left)

G0911D300511 $\varnothing 3.0 * 5m/m$ Screw*2

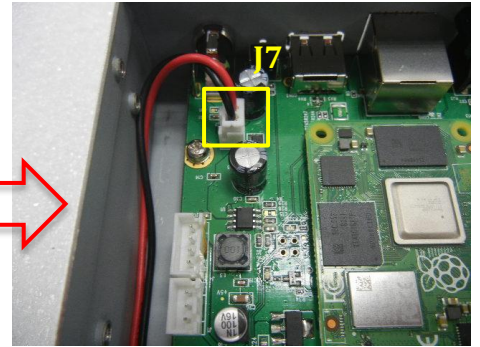
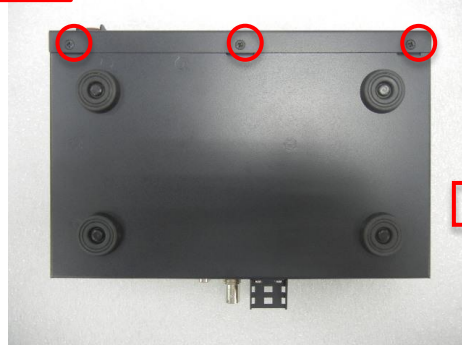
G0911D300511 $\varnothing 3.0 * 5m/m$ Screw*2



Install the front panel lock and fix, and insert the cable

Datavideo Technologies Co., Ltd.

G0911D300511 ϕ 3.0*5m/m Screw*3

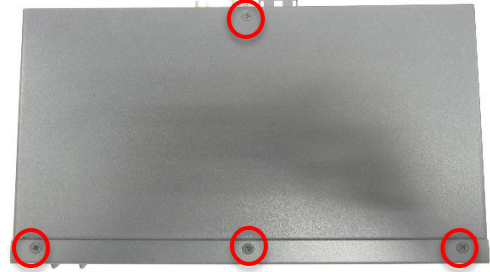


Take the cover and fix it

G09420655022 Top cover VP-655



G0911D300511 ϕ 3.0*5m/m Screw*4



G0911D300511 ϕ 3.0*5m/m Screw*4






Chapter 3.RMA Parts

RMA Parts

Model name:VP-956 NVD-45

		
Item 1	Item 2	Item 3
Description: ID LABEL 6*5cm	Description: Ø3*6mm Ni Screw	Description: φ 3.0*5m/m Screw
Part Number: G08510000053	Part Number: G09112300613	Part Number: G0911D300511


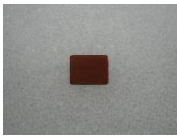

		
Item 4	Item 5	Item 6
Description: Nut M8*P0.75 Thick: 2.0 NI	Description: Internal tooth washer φ12.7*15.8*0.5 NI	Description: Handle Reinforcing Sheet (Right)
Part Number: G09120801033	Part Number: G09130001581	Part Number: G09200655011

		
Item 7	Item 8	Item 9
Description: Handle Reinforcing Sheet (Left)	Description: Base VP-956	Description: Top cover VP-655
Part Number: G09200655021	Part Number: G09220956021	Part Number: G09420655022

RMA Parts

Model name: VP-956 NVD-45

		
Item 10	Item 1112	Item
Description: Front cover VP-956	Description: Hex Nut Thickness: 2.5 NI	Description: Washer 10.10*8.10*0.3 NI
Part Number: G09420956011	Part Number: G09120002281	Part Number: G09130101816




		
Item 13	Item 14	Item 15
Description: φ 3.0*8m/m Ni Screw	Description: Infrared nameplate 14.9*11.6*0.5	Description: Hex Nut 14HEX 1/2-28UNEF- 2B T:2.5 NI
Part Number: G09111300803	Part Number: G09600812011	Part Number: G09120002290



		
Item 16	Item 17	Item 18
Description: Internal tooth washer Ø12.7*15.8*0.5t NI	Description: Foot pad EVA round φ25m/m	Description: VP-956 NVD-40 MB+RASPBERRY Pi COMPUTER MODULE
Part Number: G09130001585	Part Number: G09C00252813	Part Number: G13309561201

RMA Parts

Model name: VP-956 NVD-45



		
Item 19	Item 20	Item 21
Description: VP-955 NVD-40 LED Board	Description: VP-956 NVD-45 SDI board	Description: 2P cable to POWER SW black red PT:2.5 1007#20 160mm
Part Number: GB955-LED	Part Number: GB956-SDI	Part Number: G07310211603

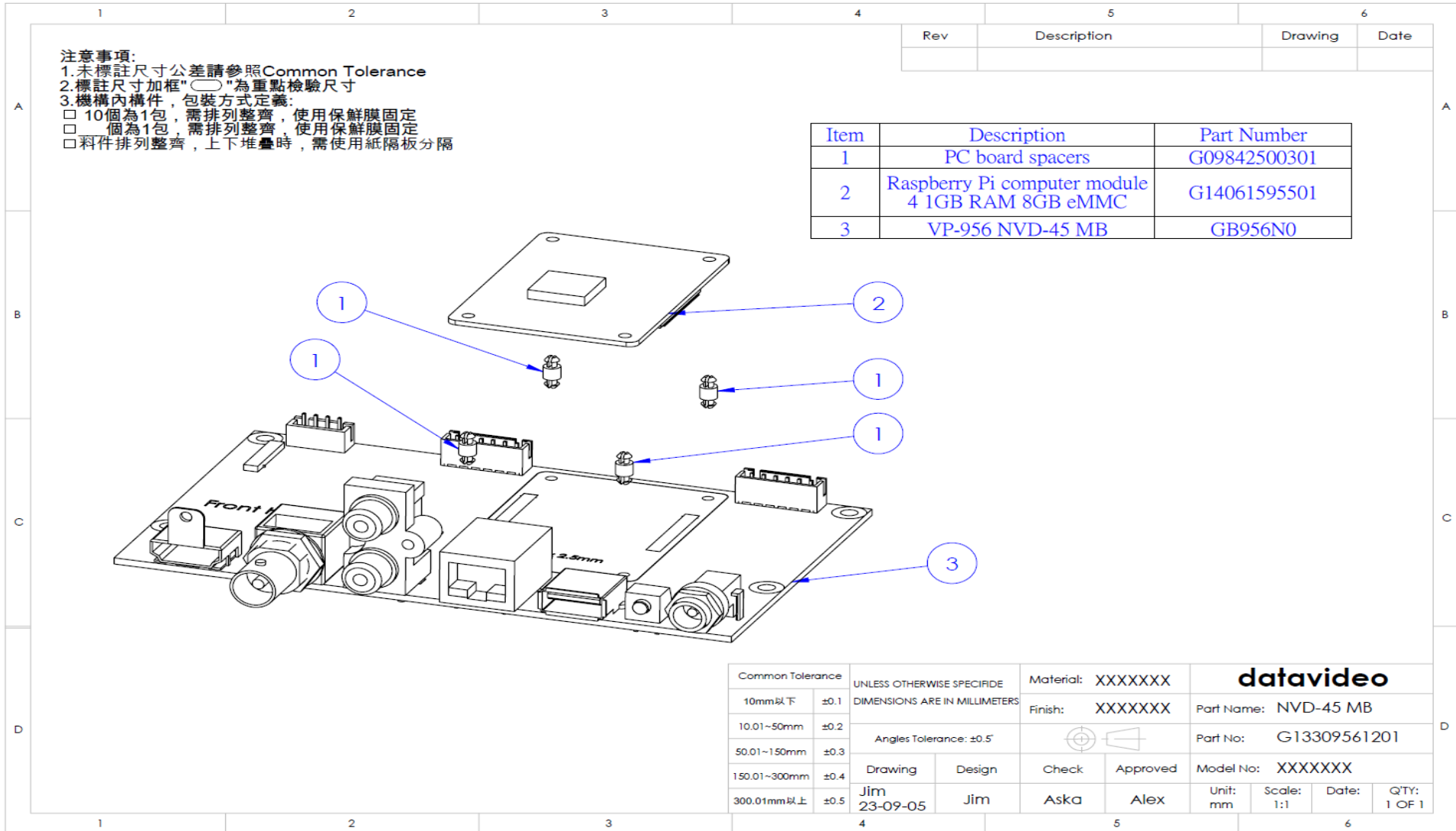
		
Item 22	Item 23	Item 24
Description: 6P Cable with Double Female UL1007#22 L=150mm	Description: Internal tooth washer	Description: 10P(16H) cable with double female seat PT:2.0 1007#26 L:150mm
Part Number: G07310611502	Part Number: G09130001589	Part Number: G0731081502

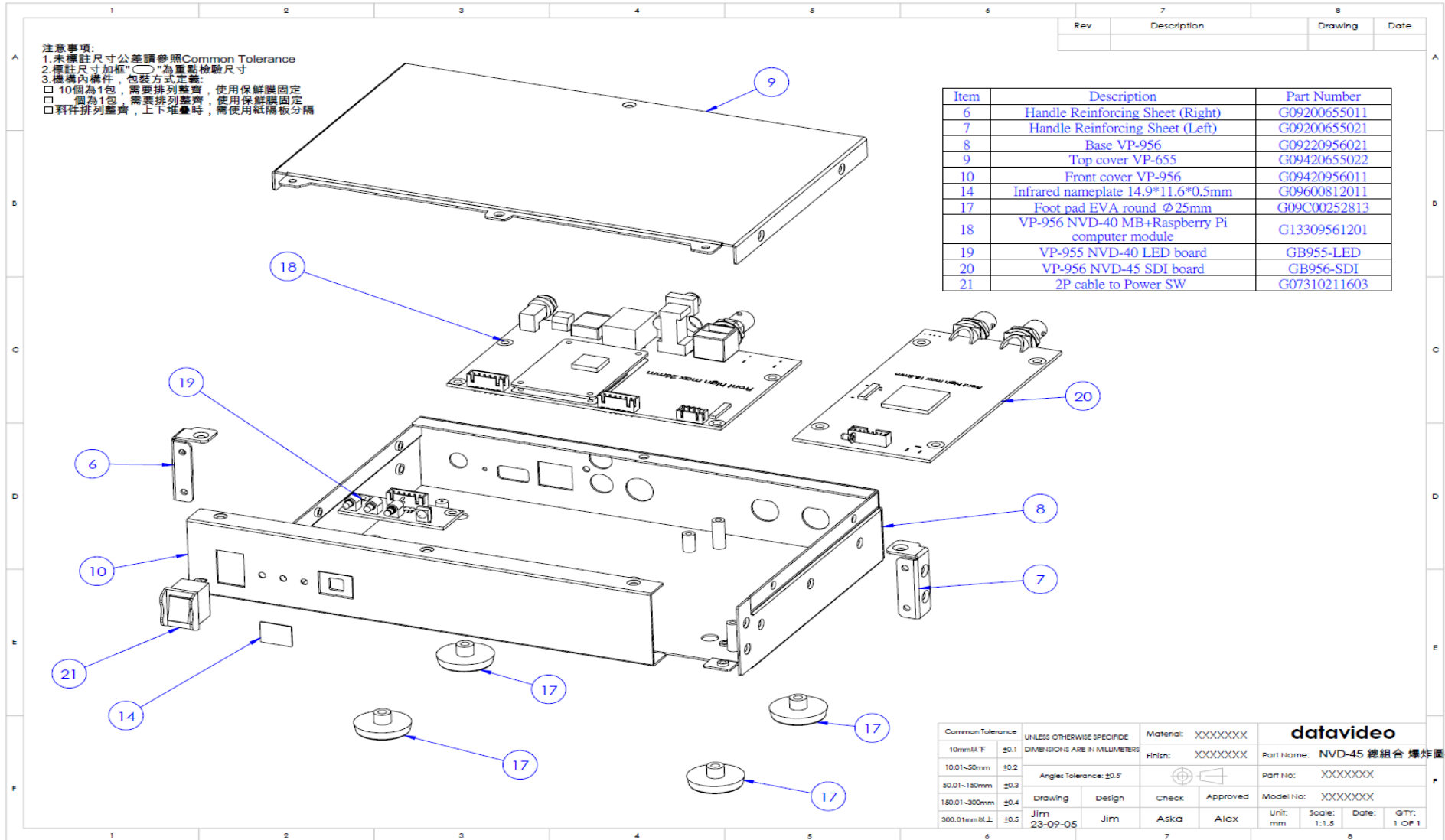
	
Item 25	Item 26
Description: 20P MICRO COAXIAL CABLE Double Female P:0.5 L=100mm	Description: PC board spacers
Part Number: G07312091001	Part Number: G09842500301

RMA Parts

Model name: VP-956 NVD-45(G13309561201 VP-956 NVD-45 MB+RASPBERRY Pi
COMPUTER MODULE)

	
<p align="center">Item 1</p>	<p align="center">Item 3</p>
<p>Description: RASPBERRY Pi COMPUTER MODULE 4 1GB RAM 8GB eMMC for NVD-40/45</p>	<p>Description: VP-956 NVD-45 moter board</p>
<p>Part Number: G14061595501</p>	<p>Part Number: GB956N0</p>





Version Compatibility Table

	Model Name:NVD-45									
Date	GB956N0	GB955-LED	GB956-SDI							
2022.08	D0	B0	R1							
Note									Electronic Engineer	Dennis
									Mechanical Engineer	Jim

Chapter 5.Circuit Diagram