

**EU-4208**

# User Manual

03-2021 / v1.4

---

## **Edimax Technology Co., Ltd.**

No. 278, Xinhua 1st Rd., Neihu Dist., Taipei City, Taiwan

Email: [support@edimax.com.tw](mailto:support@edimax.com.tw)

---

## **Edimax Technology Europe B.V.**

Fijenhof 2, 5652 AE Eindhoven, The Netherlands

Email: [support@edimax.nl](mailto:support@edimax.nl)

---

## **Edimax Computer Company**

530 Technology Drive Suite 100, Irvine, CA 92618, USA

Email: [support@edimax.us](mailto:support@edimax.us)

## Table of contents

<b>Safety instructions</b> .....	<b>3</b>
<b>Copyright</b> .....	<b>3</b>
<b>Trademarks</b> .....	<b>3</b>
<b>Introduction</b> .....	<b>4</b>
<b>Features</b> .....	<b>4</b>
<b>Package contents</b> .....	<b>4</b>
<b>System requirements</b> .....	<b>5</b>
<b>LED status</b> .....	<b>5</b>
<b>Operation</b> .....	<b>6</b>
<b>- On Windows XP/Windows Vista /Windows 7/Windows 8/8.1</b> .....	<b>6</b>
Software installation .....	6
Connection.....	9
Verifying the driver .....	10
Uninstall the adapter and driver .....	11
<b>- On MAC OS X 10.x</b> .....	<b>12</b>
Software installation.....	12
Connection .....	15
Verifying the driver.....	16
<b>Specification</b> .....	<b>17</b>

Before attempting to connect, operate or adjust this product, please save and read the User's Manual completely. The style of the product shown in this User's Manual may be different from the actual unit due to various models.

## **Safety instructions**

Always read the safety instructions carefully:

- Keep this User's Manual for future reference
- Keep this equipment away from humidity
- If any of the following situation arises, get the equipment checked by a service technician:
  - The equipment has been exposed to moisture.
  - The equipment has been dropped and damaged.
  - The equipment has obvious sign of breakage.
  - The equipment has not been working well or cannot get it to work according to the User's Manual.

## **Copyright**

This document contains proprietary information protected by copyright. All rights are reserved. No part of this manual may be reproduced by any mechanical, electronic or other means, in any form, without prior written permission of the manufacturer.

## **Trademarks**

All trademarks and registered trademarks are the property of their respective owners or companies.

## **Introduction**

The EU-4208 USB 2.0 Ethernet Adapter allows your computer instantly connect to a 10/100Mbps network through simply a USB port; no hassle to open up your computer case as is required for an internal card now! It's also an ideal USB-to-LAN alternative for gaming console that needs network access in an environment lacking wireless capability.

Compared with USB 1.1 standard which offers 12 Mbps speed, the adapter's compliance with USB 2.0 (480Mbps) ensures true 10/100 Mbps network speed without any compromise. Furthermore, the adapter is compact and is USB bus-powered; it requires no external power adapter, so that you can use it without crowding your workspace at all.

## **Features**

- Compliant with USB 2.0 and USB 1.1 specifications
- Compliant with IEEE 802.3 (10Base-T) and 802.3u (100Base-TX) standards
- Supports both full-duplex and half-duplex operations
- Supports suspend mode and remote wakeup via link-up and magic packet
- Powered by USB port only
- Equipped with diagnostic LEDs

## **Package contents**

- USB2.0 Ethernet Adapter x1
- CD (Driver, Multi-language QIG & User's Manual) x1
- Quick Installation Guide x1

## System Requirements

- Intel Pentium III or faster computer
- 64 MB RAM or more
- Windows XP®, Windows Vista®, Windows 7®, Windows 8/8.1®, Mac OS® X 10.x

## LED status

LED	Color	Description
<b>Speed</b>	Green	On for connection to a 100Mbps network.
		Off for connection to a 10Mbps or not connected.
<b>Link</b>	Yellow	LAN activity. Blinking when there is data flow between LAN and the host computer.

**Caution: DO NOT** connect the Ethernet adapter to your computer before you install the provided driver. You will be instructed to do so later.

---

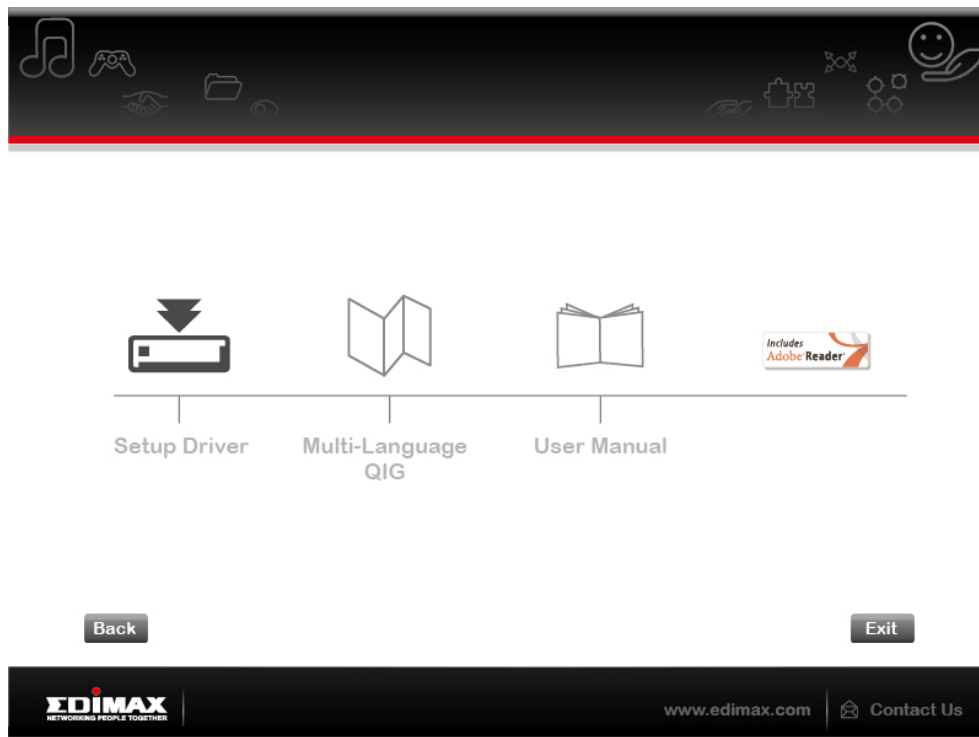
Actual strings depend on your operation system. These screen shots are from Windows 7<sup>®</sup> and might be varied slightly for each operating system.

## Software installation

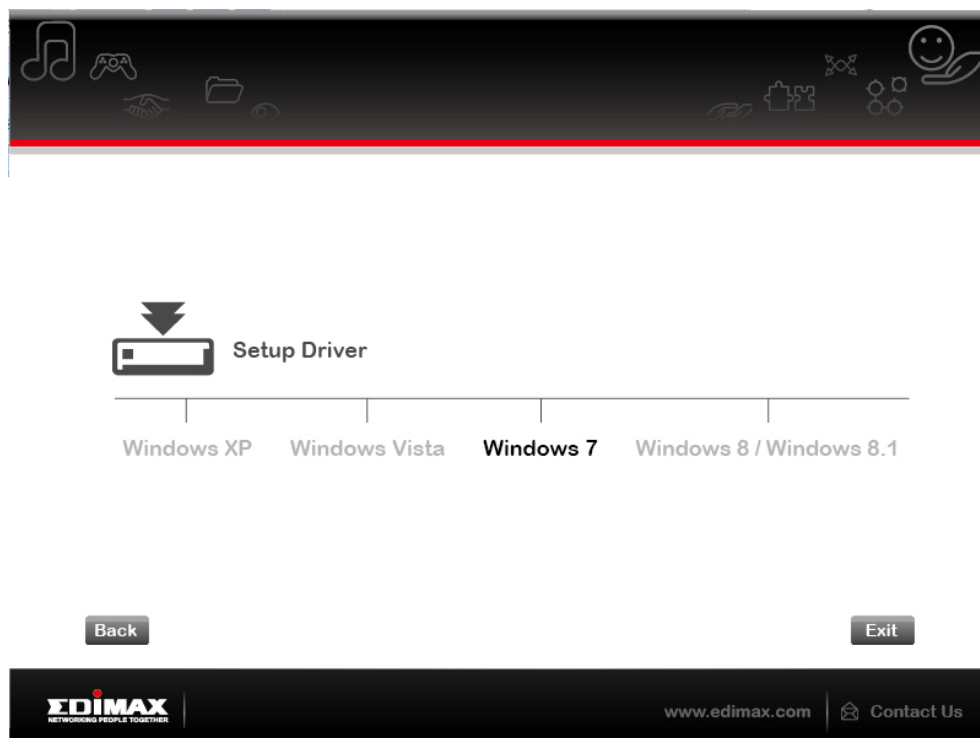
1. Insert the installation CD into your computer's CD/DVD ROM drive.
2. If the CD doesn't autorun as shown below, locate and open the autorun.exe file manually.



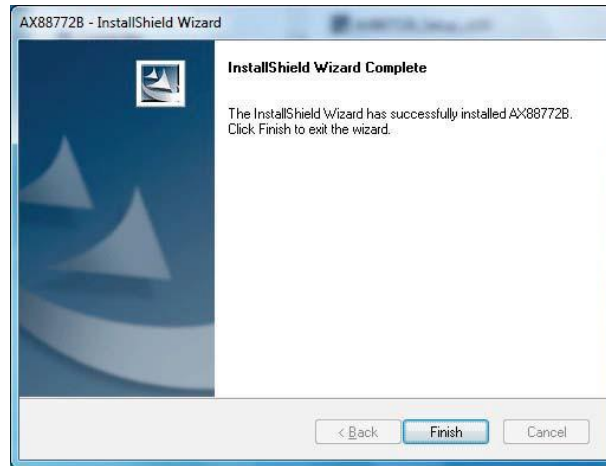
3. Click the **EU-4208** icon then select **Setup Driver**.



4. Select your operating system to begin the installation.



5. Click **Finish** when installation is complete. You may need to restart your computer as prompted.



## Connection

Connect the adapter to a network device by an Ethernet cable when the installation procedure is completed.

1. Connect an Ethernet cable to the Ethernet port on the adapter.
2. Connect the other end of the Ethernet cable to your network hub, switch or router.
3. Connect the end of the Ethernet adapter to a free USB port of your computer. Then a pop-up message will appear in the notification area indicating the installation is completed.

The Link LED should light up in yellow to indicate a proper physical connection between the adapter and the network. If the Link LED doesn't light up, please verify the cable connection between all the network devices.

## Verifying the driver

To verify the driver of the adapter, follow the steps below to open Windows **Device Manager**.

1. Follow the paths below to open device manager:

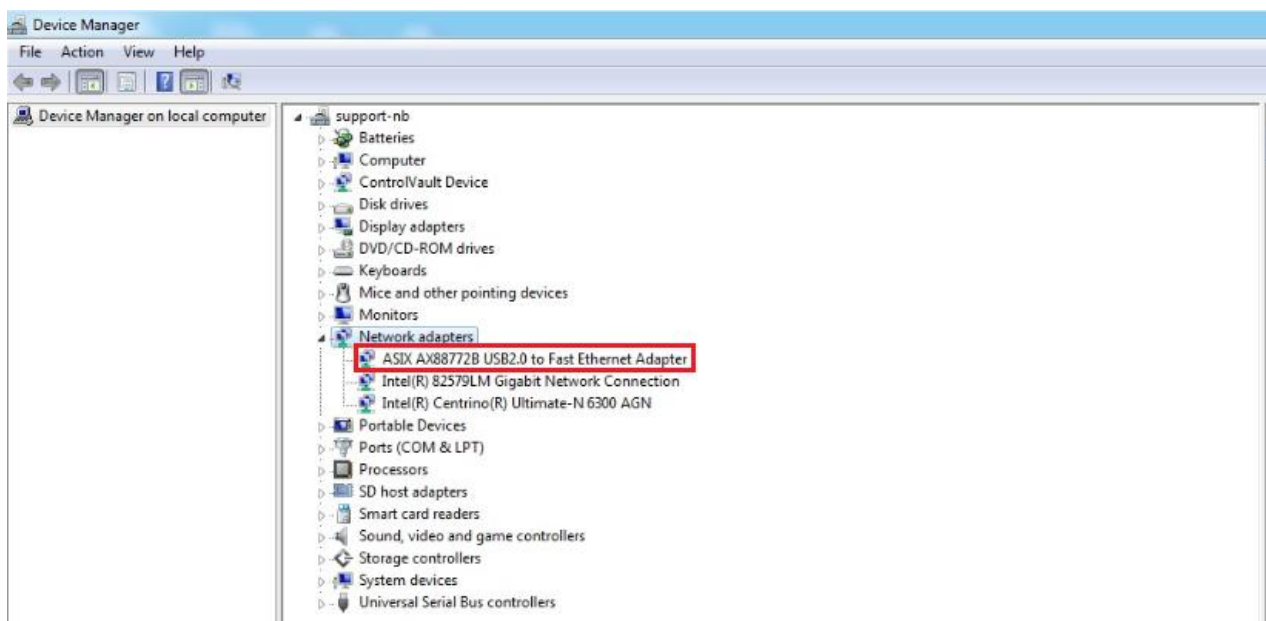
Windows 8/8.1®: **Control Panel\System\Device Manager**



Windows 7®: **Control Panel\System and Security\System\Device Manager**

Windows Vista®: **Control Panel\System Maintenance\ Device Manager**

Windows XP®: **Control Panel\System\Hardware\Device Manager**

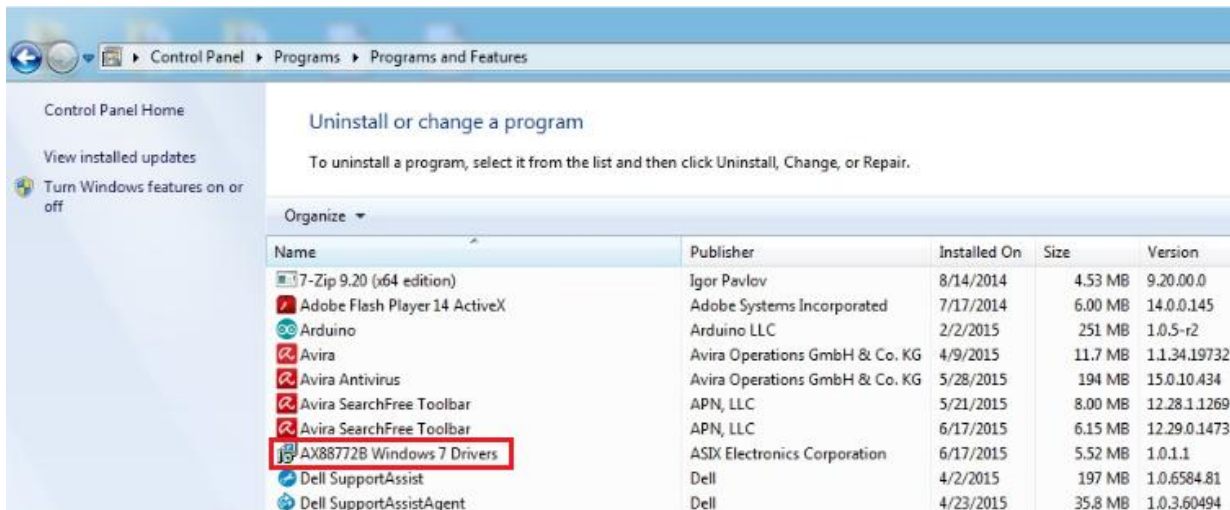
2. In the **Network adapters** group, an item named **ASIX .... Ethernet Adapter** should be listed.



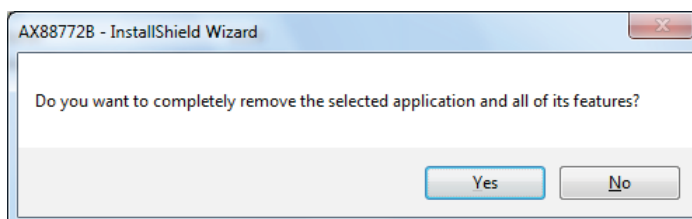
**Note:** If there is a  (question) or  (exclamation) mark next to that item, then the driver is not properly installed. Please delete the item, unplug the adapter and repeat the installation steps.

## Uninstall the adapter and driver

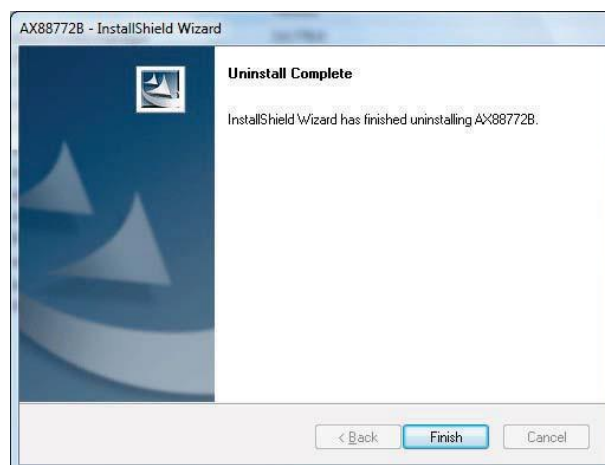
1. Open the **Control Panel > Programs > Programs and Features** on Windows 8/8.1®/Windows 7®/Windows Vista®, and **Add or Remove Programs** on Windows XP®.
2. Select **<AX88772B>** and click **<Uninstall or Remove>**.



3. Click **<Yes>** to confirm the removal.




4. Click **<Finish>** to exit.

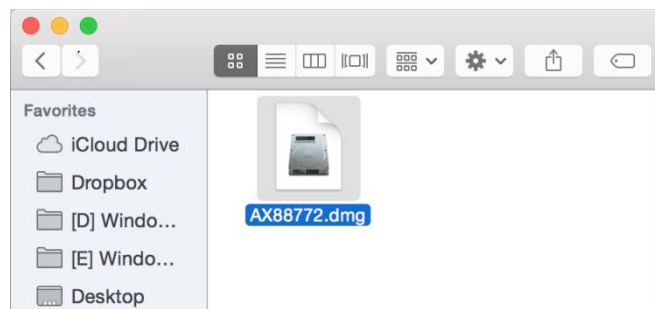


## On MAC OS® X 10.x

\* Actual strings depend on your operation system. These screen shots are from Mac OS® 10.6 and might be varied slightly for each operation system.

### Software installation

1. Insert the provided driver CD into your CD-ROM drive. Double-click the  (CD icon) and navigate to the directory of \MAC\AX88772.
2. In the directory of **AX88772**, double-click <AX88772.dmg> to execute the installer program.



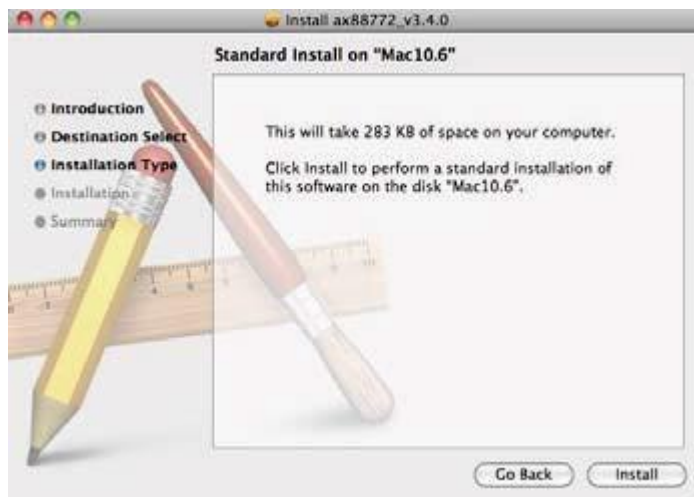
3. Click <Continue> to go to the next step once the screen below is prompted up.



4. Select a destination volume to install the driver and click **<Continue>**.



5. Click **<Install>** to continue the installation.



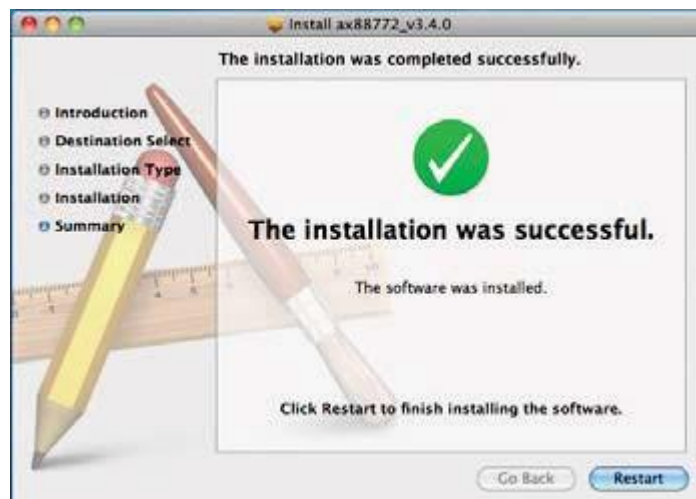
6. Enter the password if you have been set the protection on the operation system.



7. Make sure that you want to install this driver now and the computer will be restarted once the installation is done. Click **<Continue Installation>** to continue the installation.



8. Click **<Restart>** to activate the new settings.



\* Actual strings depend on your operation system. These screen shots are from Mac OS® X v10.6 and might be varied slightly for each operation system.

## Connection

Connect the adapter to a network device by an Ethernet cable when the installation procedure is completed.

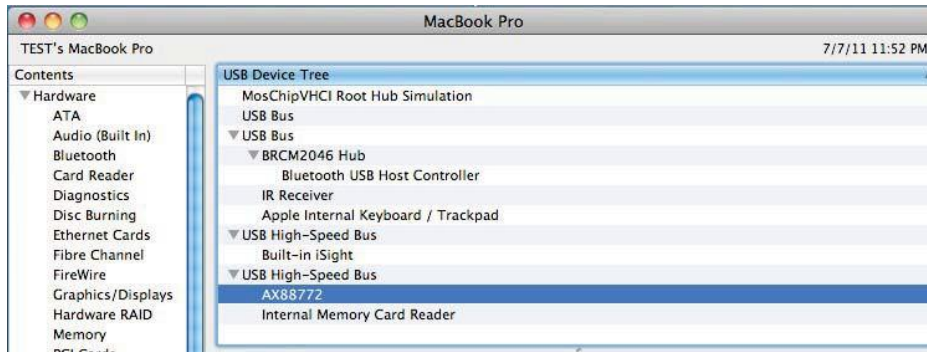
1. Connect an Ethernet cable to the Ethernet port on the adapter.
2. Connect the other end of the Ethernet cable to your network hub, switch or router.
3. Connect the end of the Ethernet adapter to a free USB port of your computer. Then a pop-up message will appear in the notification area indicating the network interface has been detected.



The Link LED should light up in green to indicate a proper physical connection between the adapter and the network. If the Link LED doesn't light up, please verify the cable connection between all the network devices.

## Verifying the driver

Once you finish the installation of Ethernet Adapter, please navigate to **System Profiler > Hardware > USB**, then you will find the driver of AX88772.



Alternatively, navigate to **System Preference > Network**.



## Specification

Item	Description
<b>Network Standards</b>	IEEE 802.3: 10Base-T IEEE 802.3u 100Base-T
<b>Data Transfer Rate</b>	Ethernet: 10Mbps (Half/Full Duplex) Fast Ethernet: 100Mbps (Half/Full Duplex)
<b>Data Bus</b>	USB 2.0 (1.1 compliant)
<b>LED Indicators</b>	Power, Link
<b>Power Consumption</b>	220mW
<b>Power Management</b>	Suspend mode, hibernation mode
<b>Network Interface</b>	Female RJ45 jack
<b>RAM</b>	Embedded SRAM for RX/TX packet buffering
<b>OS supported</b>	Windows XP®, Windows Vista®, Windows 7® and Windows 8/8.1®, Mac OS® X 10.10
<b>Operation Temperature</b>	0~70
<b>Compliance</b>	FCC, CE

\*Specification is subject to change without further notice

## **COPYRIGHT**

Copyright © Edimax Technology Co., Ltd. all rights reserved. No part of this publication may be reproduced, transmitted, transcribed, stored in a retrieval system, or translated into any language or computer language, in any form or by any means, electronic, mechanical, magnetic, optical, chemical, manual or otherwise, without the prior written permission from Edimax Technology Co., Ltd.

Edimax Technology Co., Ltd. makes no representations or warranties, either expressed or implied, with respect to the contents hereof and specifically disclaims any warranties, merchantability, or fitness for any particular purpose. Any software described in this manual is sold or licensed as is. Should the programs prove defective following their purchase, the buyer (and not this company, its distributor, or its dealer) assumes the entire cost of all necessary servicing, repair, and any incidental or consequential damages resulting from any defect in the software. Edimax Technology Co., Ltd. reserves the right to revise this publication and to make changes from time to time in the contents hereof without the obligation to notify any person of such revision or changes.

The product you have purchased and the setup screen may appear slightly different from those shown in this QIG. The software and specifications are subject to change without notice. Please visit our website [www.edimax.com](http://www.edimax.com) for updates. All brand and product names mentioned in this manual are trademarks and/or registered trademarks of their respective holders.

## EU Declaration of Conformity

- English:** This equipment is in compliance with the essential requirements and other relevant provisions of Directive 2014/30/EU.
- Français:** Cet équipement est conforme aux exigences essentielles et autres dispositions de la directive 2014/30/EU.
- Čeština:** Toto zařízení je v souladu se základními požadavky a ostatními příslušnými ustanoveními směrnic 2014/30/EU.
- Polski:** Urządzenie jest zgodne z ogólnymi wymaganiami oraz szczególnymi warunkami określonymi Dyrektywą UE 2014/30/EU.
- Română:** Acest echipament este în conformitate cu cerințele esențiale și alte prevederi relevante ale Directivei 2014/30/EU.
- Русский:** Это оборудование соответствует основным требованиям и положениям Директивы 2014/30/EU.
- Magyar:** Ez a berendezés megfelel az alapvető követelményeknek és más vonatkozó irányelveknek (2014/30/EU).
- Türkçe:** Bu cihaz 2014/30/EU. direktifleri zorunlu istekler ve diğer hükümlerle ile uyumludur.
- Українська:** Обладнання відповідає вимогам і умовам директиви 2014/30/EU.
- Slovenčina:** Toto zariadenie spĺňa základné požiadavky a ďalšie príslušné ustanovenia smerníc 2014/30/EU.
- Deutsch:** Dieses Gerät erfüllt die Voraussetzungen gemäß den Richtlinien 2014/30/EU.
- Español:** El presente equipo cumple los requisitos esenciales de la Directiva 2014/30/EU.
- Italiano:** Questo apparecchio è conforme ai requisiti essenziali e alle altre disposizioni applicabili della Direttiva 2014/30/EU.
- Nederlands:** Dit apparaat voldoet aan de essentiële eisen en andere van toepassing zijnde bepalingen van richtlijn 2014/30/EU.
- Português:** Este equipamento cumpre os requisitos essenciais da Directiva 2014/30/EU.
- Norsk:** Dette utstyret er i samsvar med de viktigste kravene og andre relevante regler i Direktiv 2014/30/EU.
- Svenska:** Denna utrustning är i överensstämmelse med de väsentliga kraven och övriga relevanta bestämmelser i direktiv 2014/30/EU.
- Dansk:** Dette udstyr er i overensstemmelse med de væsentligste krav og andre relevante forordninger i direktiv 2014/30/EU.
- suomen kieli:** Tämä laite täyttää direktiivien 2014/30/EU. oleelliset vaatimukset ja muut asiaankuuluvat määräykset.

FOR USE IN **AT BE CY CZ DK EE FI FR DE GR HU**  
**IE IT LV LT LU MT NL PL PT SK SI ES SE**  
**GB IS LI NO CH BG RO RU TR UA**



---

### WEEE Directive & Product Disposal



At the end of its serviceable life, this product should not be treated as household or general waste. It should be handed over to the applicable collection point for the recycling of electrical and electronic equipment, or returned to the supplier for disposal.

## Declaration of Conformity

We, Edimax Technology Co., Ltd., declare under our sole responsibility, that the equipment described below complies with the requirements of the European R&TTE directives.

**Equipment: USB 2.0 Fast Ethernet Adapter**  
**Model No.: EU-4208**

The following European standards for essential requirements have been followed:

### Directives 2014/30/EU

EMC : EN 55032:2012/AC:2013, Class B  
CISPR 32:2012  
EN 61000-3-2:2014  
EN 61000-3-3:2013  
EN 55024:2010++A1:2015

Edimax Technology Europe B.V.  
Fijenhof 2,  
5652 AE Eindhoven,  
The Netherlands

Printed Name: David Huang  
Title: Director  
Edimax Technology Europe B.V.

a company of:  
Edimax Technology Co., Ltd.  
No. 278, Xinhua 1st Rd.,  
Neihu Dist., Taipei City,  
Taiwan



Date of Signature: March, 2021

Signature:

A handwritten signature in black ink, appearing to read 'Albert Chang', written over a horizontal line.

Printed Name:

Albert Chang

Title:

Director

Edimax Technology Co., Ltd.