

# iVANKY



## **User Manual** **FusionDock Pro 3**

# Table of Contents

|                                    |          |
|------------------------------------|----------|
| SAFETY INSTRUCTIONS .....          | 1        |
| COPYRIGHT .....                    | 1        |
| TRADEMARKS.....                    | 1        |
| <b>REGULATORY COMPLIANCE .....</b> | <b>2</b> |
| FCC CONDITIONS .....               | 2        |
| CE .....                           | 2        |
| WEEE INFORMATION.....              | 2        |
| <b>INTRODUCTION .....</b>          | <b>3</b> |
| FEATURES.....                      | 4        |
| PACKAGE CONTENTS .....             | 5        |
| SYSTEM REQUIREMENTS .....          | 5        |
| <b>PRODUCT OVERVIEW .....</b>      | <b>6</b> |
| <b>CONNECTION.....</b>             | <b>8</b> |
| <b>DISPLAY CONFIGURATION .....</b> | <b>9</b> |
| MULTI-MONITOR CONFIGURATION .....  | 9        |
| EXTEND MODE .....                  | 10       |
| MIRROR MODE .....                  | 11       |
| SET THE PRIMARY MONITOR.....       | 12       |

|                                  |           |
|----------------------------------|-----------|
| <b>AUDIO CONFIGURATION .....</b> | <b>13</b> |
| <b>SPECIFICATION .....</b>       | <b>15</b> |

Before attempting to connect, operate or adjust this product, please save and read the User's Manual completely. The style of the product shown in this User's Manual may be different from the actual unit due to various models.

## Safety Instructions

Always read the safety instructions carefully:

- ◆ Keep this User's Manual for future reference
- ◆ Keep this equipment away from humidity
- ◆ If any of the following situation arises, get the equipment checked by a service technician:
  - The equipment has been exposed to moisture.
  - The equipment has been dropped and damaged.
  - The equipment has obvious sign of breakage.
  - The equipment has not been working well or cannot get it to work according to the User's Manual.

## Copyright

This document contains proprietary information protected by copyright. All right are reserved. No part of this manual may be reproduced by any mechanical, electronic or other means, in any form, without prior written permission of the manufacturer.

## Trademarks

All trademarks and registered trademarks are the property of their respective owners or companies.

# Regulatory Compliance

## FCC Conditions

This equipment has been tested and found to comply with Part 15 Class B of the FCC Rules. Operation is subject to the following two conditions: (1) This device may not cause harmful interference. (2) This device must accept any interference received and include interference that may cause undesired operation.

## CE

This equipment is in compliance with the requirements of the following regulations: EN 55032/EN 55024: CLASS B

## WEEE Information

For EU (European Union) member users: According to the WEEE (Waste electrical and electronic equipment) Directive, do not dispose of this product as household waste or commercial waste. Waste electrical and electronic equipment should be appropriately collected and recycled as required by practices established for your country. For information on recycling of this product, please contact your local authorities, your household waste disposal service or the shop where you purchased the product.



# Introduction

The Thunderbolt 5 Full Dock is a pro-level docking station designed for demanding high-productivity workflow needs based on Intel Thunderbolt 5 Barlow Ridge controller, supporting up to Thunderbolt 80/120 and USB4 V2 function. This versatile device can support all USB function from traditional USB , VESA MFDP Alternate mode to USB4, USB4 V2, VESA Alternate mode , Thunderbolt 3 and 4, and also work on both Windows and Mac systems.

This dock can support dynamic PD profile up to 140W maximum to charge the laptop. In addition, it can not only offer PD charge via its upstream port, but also offer PD 60W via one of Thunderbolt downstream ports to support “Thunderbolt Share”.

Besides, this dock featuring Thunderbolt 5 technology can provide optimal performance of lightning-fast 40Gbps, up to 80/120Gbps, transfer speed and high resolution video output up to dual 8K@60Hz or triple 4K@144Hz, which can help creative professionals and gamers to handle any challenge in a production workflow.

The dock also offers legacy interfaces such as USB-A 5G, USB-A 10G ports with BC 1.2 / Apple Charge, SD 4.0 card reader, 2.5GbE Ethernet port, and Hi-RES headset Audio for maximum connectivity.

# Features

- Thunderbolt 5 technology
- Downstream port
  - Thunderbolt 5 x 3 with one in the front supporting PD/PPS 60W and two in the rear supporting 15W
  - Thunderbolt 5 x 3 up to 8K30 x 2 or 4K144 x 3
  - USB-A 10Gbps x 1 in the front with BC 1.2 CDP (5V/1.5A) and DCP and Apple Charge 2.1A
  - USB-A 10Gbps x 2 in the rear with BC1.2 DCP and Apple Charge 2.1A
- Upstream PD charging:
  - Supports 15/9/5V@3A and 28V/20V@5A
  - Up to 140W
- RJ45 2.5 Gigabit Ethernet
- Supports SD 4.0 card reader
- Hi-RES Headset jack

# Package Contents

- ◆ Thunderbolt 5 Full Dock x1
- ◆ Thunderbolt Cable x1
- ◆ Power Adapter x1
- ◆ User Manual x1

# System Requirements

- ◆ Supported Operating Systems
  - Windows® 11 or higher
  - Mac OS 11 or higher

# Product Overview

## Front



| Item                            | Description   |
|---------------------------------|---|
| 1. Power button                 | Power on /off   |
| 2. Thunderbolt 5 link indicator | Indicator shows blue when Thunderbolt embedded device is connected                    |
| 3. Power indicator              | Indicator shows green when power on   |
| 4. Thunderbolt 5                | Thunderbolt 5 with PD 3.1 charging to laptop  |
| 5. Thunderbolt 5 port           | Connect to Thunderbolt/USB device   |
| 6. USB-A 10G                    | Supports BC 1.2 (5V/1.5A) and Apple Charge 2.1A                                       |
| 7. SD 4.0 card reader           | Copy data, photos, songs, videos and movies from SD card with high speed transmission |
| 8. Combo Audio Jack             | Connect to a headset  |

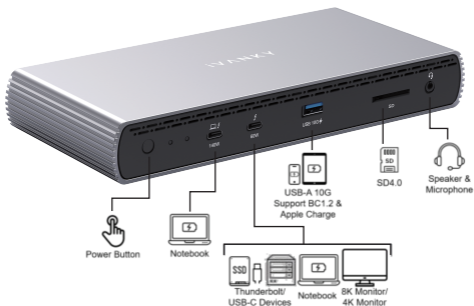
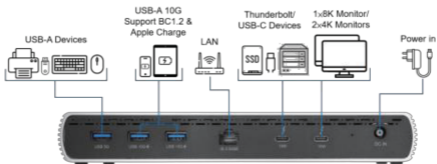
# Rear



| Item                   | Description                          |
|------------------------|--------------------------------------|
| 9. USB-A 5G            | Connect to USB devices               |
| 10. USB-A 10G          | Supports BC1.2 and Apple Charge 2.1A |
| 11. RJ45 port          | Connect to Ethernet                  |
| 12. Thunderbolt 5 port | Connect to Thunderbolt /USB devices  |
| 13. Power jack         | Connect to power adapter             |

# Connection

Follow the illustrations below to connect the corresponding connectors.



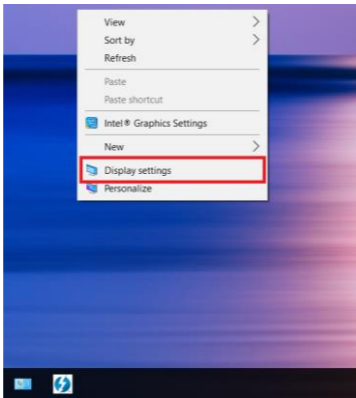
# Display Configuration

## Multi-monitor configuration

Once the extra monitors are connected, they can be configured to either **Mirror mode**, **Extend mode** or set the **primary display**.

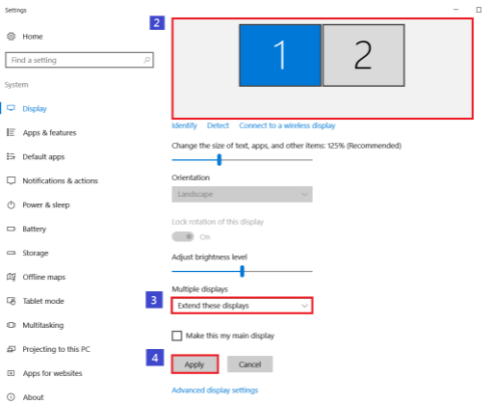
### Windows® OS

Position the mouse anywhere on the **Windows Desktop**, Right-click and select **Display Settings**.



## Extend mode

1. Refer to the **Multi-monitor configuration** section to bring up the configuration window.
2. Select the preferred monitor at top of the page.
3. Select **Multiple Displays > Extend these displays**.
4. Click **Apply** to confirm and exit.



5. Once the setting is completed, simply drag and drop the application icons or the opened windows to the add-on monitor. However, some applications may not support to display on the extended desktop.

## Troubleshooting

### a. Cursor disappeared

If the status remains in the extended mode but the docking station is disconnected, the desktop will still be panned to the add-on monitor. The cursor may not be found on the primary monitor in such a case. If it happens, connect the add-on monitor through the docking station again or keep moving the mouse.

### b. Video playback in extended mode

If the video or DVD playback quality is poor or low performance in extended mode, please playback it on the primary monitor instead of the add-on monitor.

## Mirror mode

1. Refer to the **Multi-monitor configuration** section to bring up the configuration window.
2. Select the preferred monitor at top of the page.
3. Select **Multiple Displays > Duplicate these displays**.
4. Click **Apply** to confirm and exit.

## Set the primary monitor

1. Refer to the **Multi-monitor configuration** section to bring up the configuration window.
2. Select the preferred monitor at top of the page.
3. Check the box of **Make this my main display**.



**NOTE:** For some computers, you may need to disable the main display by unchecking the box of **Extend the desktop onto this monitor** or **Extend my Windows desktop onto this monitor**.

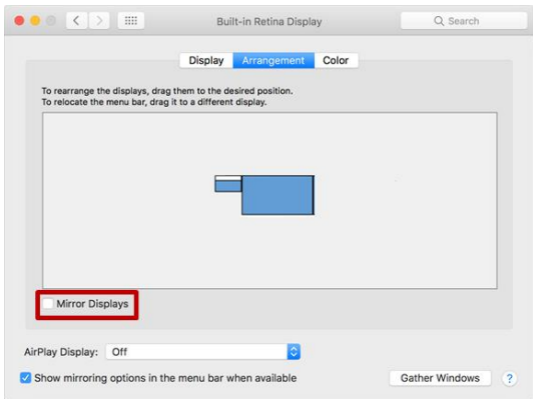
4. Click **Apply** to confirm and exit.

# Mac OS®

1. Click on the **Apple** sign at the top left corner of the screen and select **System Preferences.../ Displays**.
2. To rearrange the displays, drag them to the desired position.

To relocate the menu bar, drag it to a different display.

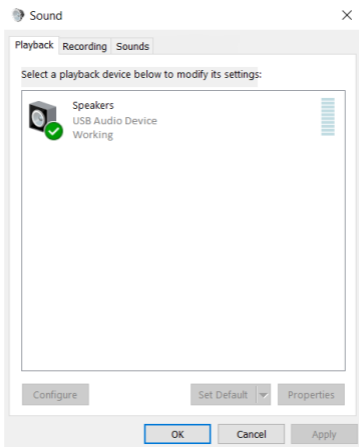
To switch to **Mirror Mode**, tick the box in front of **Mirror Displays**.



# Audio Configuration

By default, when the docking station is connected to a computer, the audio configuration may be changed to **USB (Multimedia) Audio Device** automatically (this setting depends on models). If it does not work, follow the steps below to setup.

1. Open **Control Panel** and then select the hardware and sound icon.
2. Click **Sound > Manage audio devices** and then select **USB Audio Device**.



# Specification

|                     |                       |   |
|---------------------|-----------------------|---|
| User Interface      | Upstream              | Thunderbolt/USB-C port supports up to PD 140W                                     |
|                     | Downstream            | Thunderbolt 5 x3<br>USB-A 5G x1<br>USB-A 10G x3, with BC1.2 and Apple Charge 2.1A |
| Max Display         |                       | 8K60Hz x2<br>4K144 x3   |
| Ethernet            | Type                  | RJ45 Gigabit Ethernet x1<br>2.5GbE  |
| Card Reader         | Type                  | SD 4.0 x1   |
| Audio               |                       | Hi-RES Headset jack x1  |
| Power               | Power Mode            | Self-powered  |
|                     | Power Adapter         | Input: AC 100-240V<br>Output: DC 180W   |
| Working Environment | Operation Temperature | 0~35 degree   |
|                     | Storage Temperature   | -20~70 degree   |
| Compliance          |                       | Thunderbolt 5, CE, FCC, VCCI, RCM   |



V1.0

