



JLAB
HEAR OTC
HEARING AID

We love that you are rocking JLab!
We take pride in our products and fully stand behind them.



YOUR WARRANTY

All warranty claims are subject to JLab authorization and at our sole discretion. Retain your proof of purchase to ensure warranty coverage.



CONTACT US

Reach out to us at support@jlab.com or visit jlab.com/contact

REGISTER TODAY

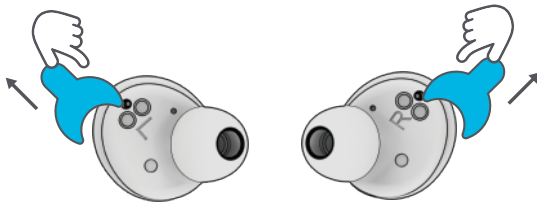
jlab.com/register

Product updates | How-to tips
FAQs & more

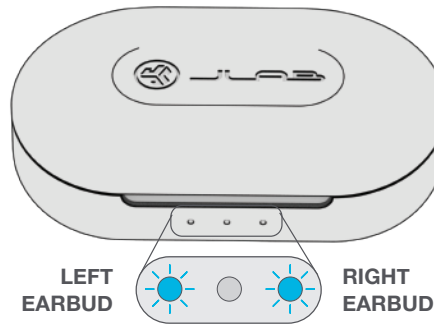
CONNECT YOUR DEVICE

(Don't need Bluetooth? Follow steps 1-2 and turn to page 3 for Hearing Aid Only Mode.)

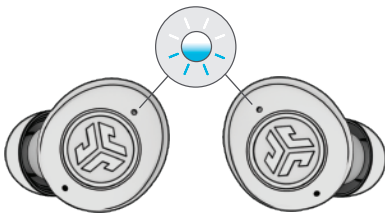
- 1 Remove stickers. Place earbuds back in case and close door.



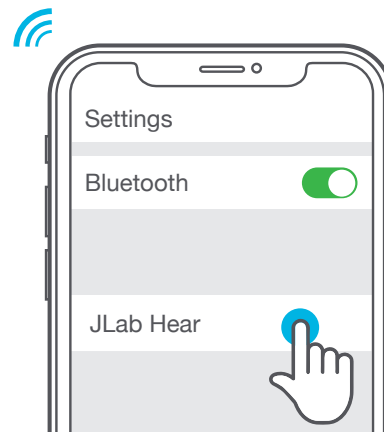
- 2 Blue lights on case indicate charging.



- 3 Remove earbuds from case. One earbud blinks blue/white = Ready to Pair



- 4 Select "JLab Hear" in your Bluetooth device settings.



CONTROLS: HEARING AID



LEFT VOLUME CHANGE:
Press Hold

SOUND MODE CHANGE:
2x Press



RIGHT VOLUME CHANGE:
Press Hold

SOUND MODE CHANGE:
2x Press



SOUND MODES



LOUD ENVIRONMENT

Decreases surrounding noise and white noise to reduce ear fatigue.



RESTAURANT

Decreases background noises in crowded environments.



CONVERSATION

Enhances voices facing you.



QUIET ENVIRONMENT

Enhances all noises to clearly hear surroundings and voices.

CONTROLS: BLUETOOTH MEDIA



PLAY/PAUSE:
1x Press

VOLUME DOWN:
Press Hold

TRACK BACK:
2x Press

ANSWER/HANG UP:
2X Press



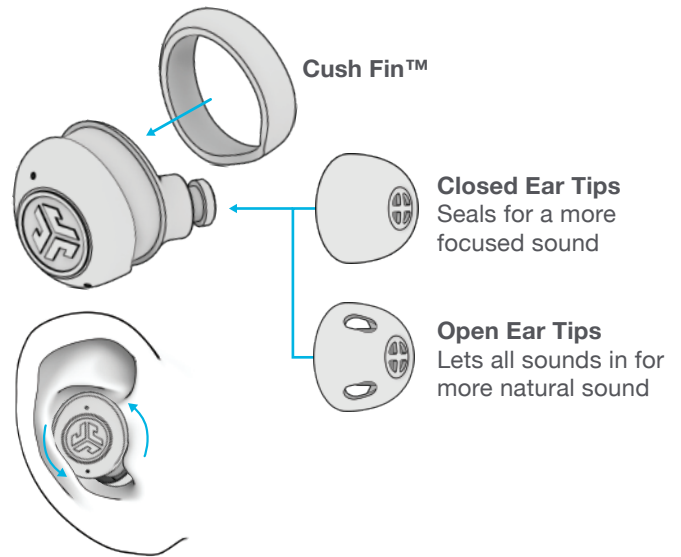
PLAY/PAUSE:
1x Press

VOLUME DOWN:
Press Hold

TRACK BACK:
2x Press

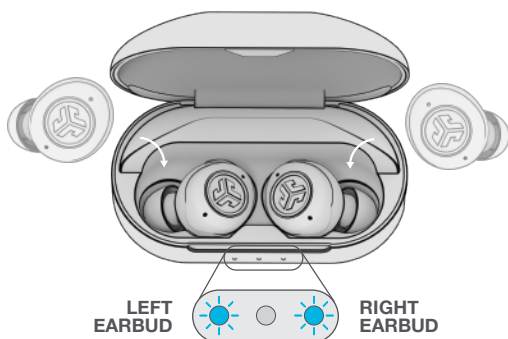
ANSWER/HANG UP:
2X Press

FITTING



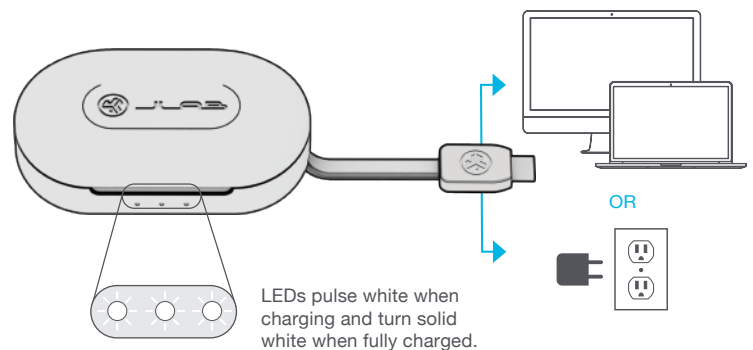
CHARGING EARBUDS

Earbuds will power OFF and start charging when placed in case. **Blue lights = Earbuds charging**



CHARGING CASE

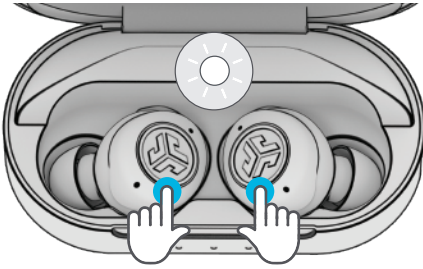
Connect charging cable to computer or USB-C charging device.



HEARING AID ONLY MODE

(Does not connect to Bluetooth and improves battery life)

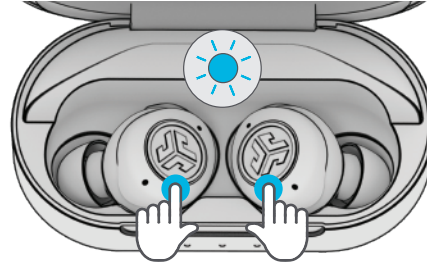
Press Hold 3+ seconds in case
Earbuds will blink white



BLUETOOTH + HEARING MODE

(Connects to Bluetooth out of the case)

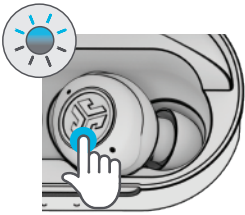
Press Hold 3+ seconds in case
Earbuds will blink blue



TROUBLESHOOTING CONNECTION (FACTORY RESET)

1

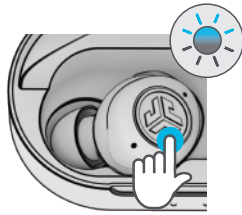
When earbuds are in charging case,
quick **7x tap** on one earbud.
Earbud blinks blue.



7x tap

2

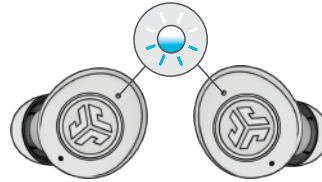
Quick **7x tap** on other earbud.
Earbud blinks blue.



7x tap

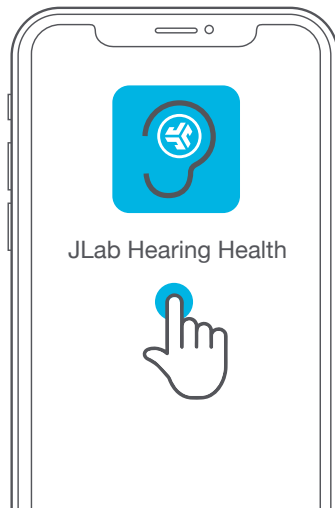
3

Remove earbuds from case.
One earbud blinks
blue/white = Ready to Pair



DOWNLOAD THE APP

Customize JLab Hear and update to the latest software. Download the **JLab Hearing Health App** in Apple/Google Play Store.



WATCH THE VIDEO

Scan the QR code below for an interactive video

