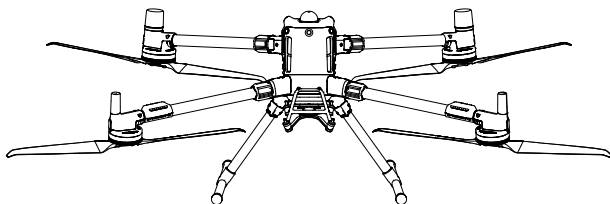


# **dji** MATRICE 400

## User Manual

v1.0 2025.06





This document is copyrighted by DJI with all rights reserved. Unless otherwise authorized by DJI, you are not eligible to use or allow others to use the document or any part of the document by reproducing, transferring or selling the document. Only refer to this document and the content thereof as instructions to operate DJI products. The document should not be used for other purposes.

In the event of divergence among different versions, the English version shall prevail.

### **Searching for Keywords**

Search for keywords such as “battery” and “install” to find a topic. If you are using Adobe Acrobat Reader to read this document, press Ctrl+F on Windows or Command+F on Mac to begin a search.

### **Navigating to a Topic**

View a complete list of topics in the table of contents. Click on a topic to navigate to that section.

### **Printing this Document**

This document supports high resolution printing.

## Using this Manual

- ⚠ • This product does not meet the standard operating temperature for military grade application (-55° to 125° C / -67° to 257° F), which is required to endure greater environmental variability. Use the product for applications that meet the operating temperature range requirements of that grade.

## Legend

⚠ Important

💡 Hints and Tips

📖 Reference

## Read Before Use

DJI™ provides you with tutorial videos and the following documents:

1. *Safety Guidelines*
2. *Quick Start Guide*
3. *User Manual*

It is recommended to watch all the tutorial videos and read the *Safety Guidelines* before using for the first time. Make sure to review the *Quick Start Guide* before using for the first time and refer to this *User Manual* for more information.

## Video Tutorials

Go to the address below or scan the QR code to watch the tutorial videos, which demonstrate how to use the product safely:



<https://enterprise.dji.com/matrice-400/video>

## Download DJI Assistant 2

Download and install DJI ASSISTANT™ 2 (Enterprise Series) using the link below:

<https://www.dji.com/downloads/software/assistant-dji-2-for-matrice>

# Contents

<b>Using this Manual</b>	<b>3</b>
Legend	3
Read Before Use	3
Video Tutorials	3
Download DJI Assistant 2	3
<b>1 Overview</b>	<b>10</b>
1.1 Aircraft	10
1.2 Remote Controller	11
1.3 BS100 Intelligent Battery Station	13
<b>2 Flight Safety</b>	<b>14</b>
2.1 Operating the Aircraft Responsibly	14
2.2 Flight Restrictions	14
GEO (Geospatial Environment Online) System	14
GEO Zones	15
Flight Restrictions	15
Buffer Zone	17
Unlocking GEO Zones	18
Flight Altitude and Distance Limits	18
Flight Altitude and Maximum Payload	19
2.3 Flight Environment Requirements	20
<b>3 Using for the First Time</b>	<b>22</b>
3.1 Charging	22
3.2 Preparing the Remote Controller	23
Mounting the WB37 Intelligent Battery	23
Adjusting the Antennas	23
Mounting the Strap and Bracket Kit	24
3.3 Preparing the Aircraft	24
Installing the Landing Gears	24
Unfolding the Aircraft	24
Mounting the Gimbal Camera	25
Installing the Intelligent Flight Battery	25
3.4 Activation	26
3.5 Basic Flight	26
Pre-Flight Checklist	26
Starting/Stopping the Motors	27
Starting the Motors	27
Stopping the Motors	27

Stopping the Motors Mid-Flight	28
Controlling the Aircraft	28
<b>4 Aircraft</b>	<b>30</b>
4.1 Flight Modes	30
4.2 Aircraft Status Indicator	31
4.3 Beacon	32
4.4 Propellers	33
Warnings	33
4.5 FPV Camera	34
4.6 Gimbal Camera	34
4.7 Intelligent Battery Station	34
4.8 Intelligent Flight Battery	34
Notice	34
Checking the Battery Level	35
Warming the Battery	36
Battery Storage	36
4.9 Aircraft RTK	37
Enabling/Disabling RTK	37
Custom Network RTK	38
4.10 Return to Home	38
Notice	39
Advanced RTH	40
Trigger Method	41
RTH Procedure	42
RTH Settings	43
Landing Protection	45
4.11 Sensing System	46
Detection Range	48
Warnings	49
Vision Assist	52
4.12 Advanced Pilot Assistance Systems	53
Warnings	53
Landing Protection	53
4.13 DJI AirSense	54
4.14 IP Rating of the Aircraft	55
4.15 Expansion Ports	55
<b>5 Remote Controller</b>	<b>56</b>
5.1 Charging the Battery	56
5.2 Customizable Button	57
5.3 Button Combinations	57

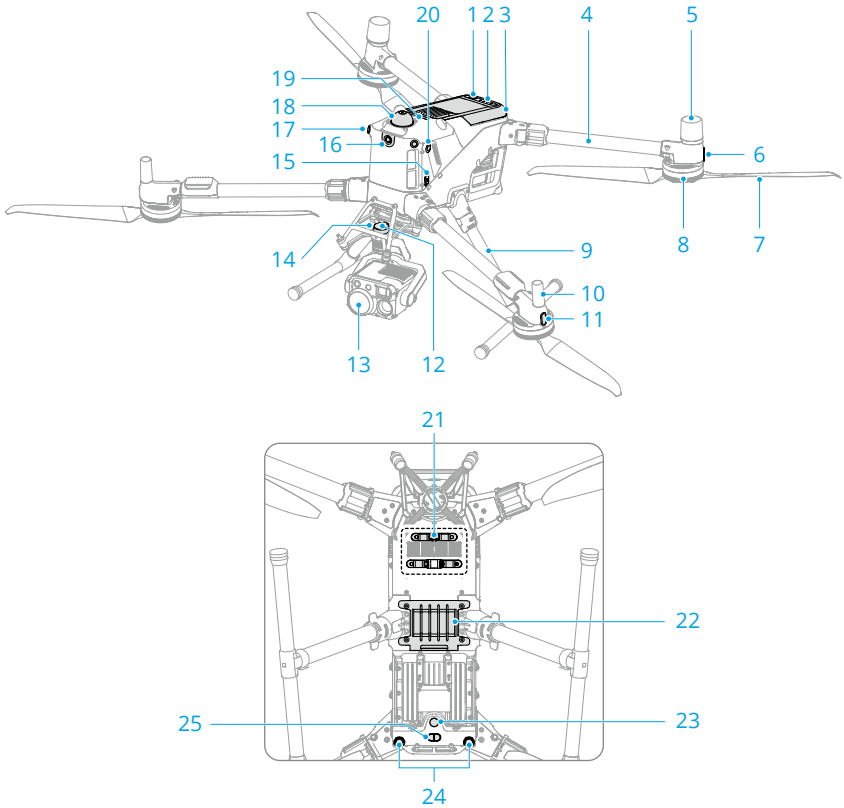
5.4	Operating the Touchscreen	58
5.5	Remote Controller LEDs	59
	Status LED	59
	Battery Level LEDs	59
5.6	Remote Controller Alert	59
5.7	Optimal Transmission Zone	60
5.8	Linking the Remote Controller	61
5.9	HDMI Settings	61
5.10	Dual Operator Mode	62
	Setting the Dual Operator Mode	62
	Using Dual Operator Mode	62
5.11	DJI RC Plus 2 sub2G SDR Module	64
<b>6</b>	<b>DJI Pilot 2 App</b>	<b>65</b>
6.1	Homepage	65
6.2	Camera View	66
	FPV Camera View	66
	Top Bar	68
	Navigation Display	69
	Primary Flight Display	71
	AR Projection	72
	Laser Rangefinding	73
<b>7</b>	<b>Flight Operations</b>	<b>75</b>
7.1	Annotation Management and Synchronization	75
	PinPoint	75
	Line and Area Annotation Management	76
	Annotation Sharing	77
7.2	Intelligent Functions	77
7.3	Flight Tasks	78
	Waypoint Route	78
	Set Waypoints	79
	Live Mission Recording	80
	Area Route	81
	Smart Oblique	82
	Terrain follow	82
	Linear Route	84
	Set Waypoints	85
	Live Mission Recording	85
	Slope Route	85
	Create Slope	85
	Adjust and Confirm AR Slope	86

Adjust Flight Route Parameters	87
Geometric Route	87
Set the Bottom Base Shape	87
Set Altitude	88
Adjust Flight Route Parameters	89
Smart 3D Capture	89
Collecting Aerial Photogrammetry Data	90
Route Parameters	91
Data Storage	95
Photo File	95
Image Log File	98
GNSS Observation File	98
<b>8 Appendix</b>	<b>99</b>
8.1 Specifications	99
8.2 Firmware Update	99
Using DJI Pilot 2	99
Aircraft and Remote Controller Firmware Update	99
Battery Station and Batteries Firmware Update	99
Offline Firmware Update	100
Using DJI Assistant 2 (Enterprise Series)	100
Aircraft and Remote Controller Firmware Update	100
Notices	100
8.3 Flight Data	101
8.4 Using Enhanced Transmission	101
Inserting the nano-SIM Card	101
Installing the DJI Cellular Dongle 2	102
Using Enhanced Transmission	103
Security Strategy	103
Remote Controller Usage Notes	104
4G Network Requirements	104
8.5 Calibration	105
Compass Calibration	105
8.6 Post-Flight Checklist	105
8.7 Maintenance Instructions	105
8.8 Troubleshooting Procedures	106
8.9 Risks and Warnings	107
8.10 Disposal	107
8.11 C3 Certification	108
Remote Controller Warnings	109
Direct Remote ID	110
GEO Awareness	110

<b>GEO Zones</b>	111
EASA Notice	113
Original Instructions	114
8.12 FAR Remote ID Compliance Information	114

# 1 Overview

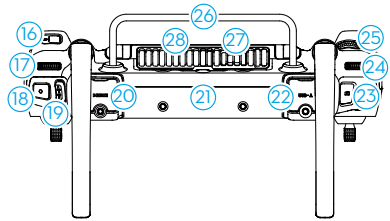
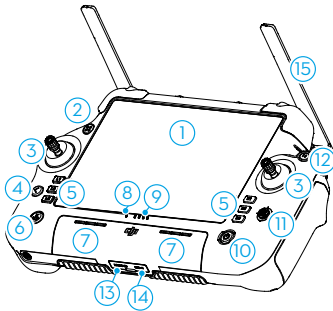
## 1.1 Aircraft



- 1. Power Button
- 2. Battery Level LEDs
- 3. Intelligent Flight Battery
- 4. Frame Arm
- 5. GNSS Antennas
- 6. Aircraft Status Indicator
- 7. Propellers
- 8. Motors
- 9. Landing Gear
- 10. Antennas
- 11. Front LEDs
- 12. Gimbal Connector (DGC 2.0)
- 13. Gimbal Camera (sold separately)
- 14. Release Button
- 15. USB-C Assistant Port
- 16. FPV Camera
- 17. Omnidirectional Vision System
- 18. Rotating LiDAR

- 19. Top LiDAR
- 20. Beacon
- 21. E-Port V2
- 22. Cellular Dongle Compartment
- 23. Auxiliary Light
- 24. Downward Vision System
- 25. Three-Dimensional Infrared Sensing System

## 1.2 Remote Controller



1. Touchscreen
2. Aircraft Authority Button  
Used to take control of the aircraft and indicate the aircraft control status. Refer to Guide on the home screen for more information.
3. Control Sticks
4. Back/Function Button  
Press once to return to the previous screen. Press twice to return to the home screen.  
Use the back button and another button to activate combination buttons. Refer to the [Button Combinations](#) section for more information.
5. L1/L2/L3/R1/R2/R3 Buttons  
Go to camera view in to view the specific functions of these buttons.
6. Return to Home (RTH) Button  
Press and hold to initiate RTH. Press again to cancel RTH.
7. Microphone
8. Status LED
9. Battery Level LEDs
10. Power Button  
Press once to check the current battery level. Press once, and then press and hold to power the remote controller on or off. While the remote controller is powered on, press once to turn the touchscreen on or off.
11. 5D Button
12. Flight Pause Button  
Press once to make the aircraft brake and hover in place (only when GNSS or Vision Systems are available).

- 13. microSD Card Slot
- 14. USB-C Port
- 15. External Antennas
- 16. Customizable C3 Button
- 17. Gimbal Dial
- 18. Record Button
- 19. Flight Mode Switch
- 20. HDMI Port
- 21. Internal Antennas
- 22. USB-A Port
- 23. Focus/Shutter Button
- 24. Gimbal Dial
- 25. Customizable C4 Scroll Wheel
- 26. Handle
- 27. Speaker
- 28. Air Vent
- 29. DJI RC Plus 2 sub2G SDR Module
- 30. Customizable C1/C2 Button
- 31. Rear Cover
- 32. Battery Release Button
- 33. Battery Compartment

Users can connect the remote controller to a intelligent battery station for firmware updates. Users can also insert third-party devices, such as a USB flash drive or a memory card.

- 23. Focus/Shutter Button

Press halfway down on the button to autofocus and press all the way down to take a photo.

For installing the WB37 Intelligent Battery.

- 34. Cellular Dongle Compartment

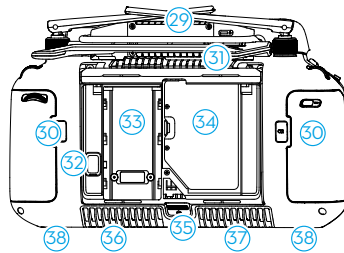
- 35. Rear Cover Release Button

- 36. Buzzer

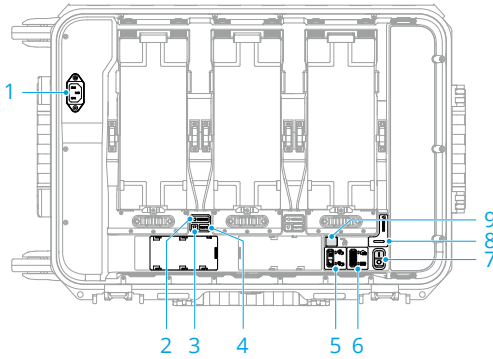
- 37. Air Intake

- 38. M4 Screw Hole

For mounting the strap and bracket kit.



## 1.3 BS100 Intelligent Battery Station



1. AC Power Port
2. TB100 Battery LEDs
3. WB37 Battery LEDs
4. WB37 Battery Release Button
5. Silent Mode Switch & LEDs
6. Charging Mode Switch & LEDs
7. Power Switch
8. Battery Station LED
9. USB-C Charging Port

## 2 Flight Safety

After completing pre-flight preparations, it is recommended to train your flying skills and practice flying safely. Pick a suitable area to fly in according to the following flight requirements and restrictions. Strictly abide by local laws and regulations when flying. Read the *Safety Guidelines* before flight to ensure safe use of the product.

### 2.1 Operating the Aircraft Responsibly

To avoid serious injury and property damage, observe the following rules:

1. Make sure you are NOT under the influence of anesthesia, alcohol, or drugs or suffering from dizziness, fatigue, nausea, or other conditions that could impair the ability to operate the aircraft safely.
2. After landing, power off the aircraft first, then switch off the remote controller.
3. DO NOT drop, launch, fire, or otherwise project any dangerous payloads on or at any buildings, persons, or animals, which could cause personal injury or property damage.
4. DO NOT use an aircraft that has been accidentally damaged, crashed, or is not in good condition.
5. Make sure to train sufficiently and have contingency plans for emergencies or if an incident occurs.
6. Make sure to have a flight plan. DO NOT fly the aircraft recklessly.
7. Respect the privacy of others when using the camera. Make sure to comply with local privacy laws, regulations, and moral standards.
8. DO NOT use this product for any reason other than general personal use.
9. DO NOT use it for illegal or inappropriate purposes such as spying, military operations, or unauthorized investigations.
10. DO NOT use this product to defame, abuse, harass, stalk, threaten, or otherwise violate legal rights such as the right to privacy and publicity of others.
11. DO NOT trespass onto the private property of others.

### 2.2 Flight Restrictions

#### GEO (Geospatial Environment Online) System

The DJI Geospatial Environment Online (GEO) System is a global information system that provides real-time information on flight safety and restriction updates and prevents

UAVs from flying in restricted airspace. Under exceptional circumstances, restricted areas can be unlocked to allow flights. Prior to that, you must submit an unlocking request based on the current restriction level in the intended flight area. The GEO system may not fully align with local laws and regulations. You are responsible for your own flight safety and must consult with the local authorities on the relevant legal and regulatory requirements before requesting to unlock a restricted area. For more information about the GEO system, visit <https://fly-safe.dji.com>.

## GEO Zones

The DJI GEO system designates safe flight locations, provides risk levels and safety notices for individual flights, and offers information on restricted airspace. All restricted flight areas are referred to as GEO Zones, which are further divided into Restricted Zones, Authorization Zones, Warning Zones, Enhanced Warning Zones, and Altitude Zones. You can view such information in real-time in DJI Pilot 2. GEO Zones are specific flight areas, including but not limited to airports, large event venues, locations where public emergencies have occurred (such as forest fires), nuclear power plants, prisons, government properties, and military facilities. By default, the GEO system limits takeoffs and flights in zones that may cause safety or security concerns. A GEO Zone map that contains comprehensive information on GEO Zones around the globe is available on the official DJI website: <https://fly-safe.dji.com/nfz/nfz-query>.

## Flight Restrictions

The following section describes in detail the flight restrictions for the above mentioned GEO Zones.

### Restricted Zones (Red)

UAVs are prohibited from flying in Restricted Zones. If you have obtained permission to fly in a Restricted Zone, visit <https://fly-safe.dji.com> or contact [flysafe@dji.com](mailto:flysafe@dji.com) to unlock the zone.

### Scenario

**Takeoff:** the aircraft motors cannot be started in Restricted Zones.

**In Flight:** when the aircraft flies inside a Restricted Zone, a 100-second countdown will commence in DJI Pilot 2. When the countdown is finished, the aircraft will land immediately in semi-automatic descent mode and turn off its motors after landing.

**In Flight:** when the aircraft approaches the boundary of a Restricted Zone, the aircraft will automatically decelerate and hover.

### Authorization Zones (Blue)

The aircraft will not be able to take off in an Authorization Zone unless it obtains a permission to fly in the area.

#### Scenario

**Takeoff:** the aircraft motors cannot be started in Authorization Zones. To fly in an Authorization Zone, the user is required to submit an unlocking request registered with a DJI-verified phone number.

**In Flight:** when the aircraft flies inside an Authorization Zone, a 100-second countdown will commence in DJI Pilot 2. When the countdown is finished, the aircraft will land immediately in semi-automatic descent mode and turn off its motors after landing.

### Warning Zones (Yellow)

A warning will be displayed when the aircraft flies inside a Warning Zone.

#### Scenario

The aircraft can fly in the zone but the user is required to understand the warning.

### Enhanced Warning Zones (Orange)

When the aircraft flies in an Enhanced Warning Zone, a warning will be displayed prompting the user to confirm the flight path.

#### Scenario

The aircraft can continue to fly once the warning is confirmed.

### Altitude Zones (Gray)

The aircraft altitude is limited when flying inside an Altitude Zone.

#### Scenario

When the GNSS signal is strong, the aircraft cannot fly above the altitude limit.

**In Flight:** when the GNSS signal changes from weak to strong, a 100-second countdown will commence in DJI Pilot 2 if the aircraft exceeds the altitude limit. When the countdown is finished, the aircraft will descend below the altitude limit and hover.

When the aircraft approaches the boundary of an Altitude Zone and the GNSS signal is strong, the aircraft will decelerate automatically and hover if the aircraft is above the altitude limit.



- **Semi-Automatic Descent:** all stick commands except the throttle stick command and the RTH button are available during descent and landing. The aircraft motors will turn off automatically after landing. It is recommended to fly the aircraft to a safe location before the semi-automatic descent.
-

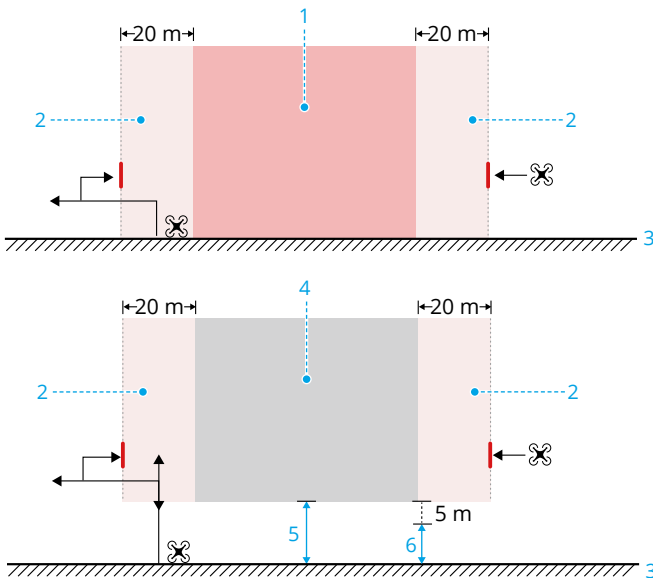
## Buffer Zone

### Buffer Zones for Restricted Zones/Authorization Zones

To prevent the aircraft from accidentally flying into a Restricted or Authorization Zone, the GEO system creates a buffer zone of about 20 meters wide outside each Restricted and Authorization Zone. As shown in the illustration below, the aircraft can only take off and land in place or fly toward an opposite direction of the Restricted or Authorization Zone when inside the buffer zone, and cannot fly toward the Restricted or Authorization Zone unless an unlocking request has been approved. The aircraft cannot fly back into the buffer zone after leaving the buffer zone.

### Buffer Zones for Altitude Zones

A buffer zone of about 20 meters wide is established outside each Altitude Zone. As shown in the illustration below, when approaching the buffer zone of an Altitude Zone in a horizontal direction, the aircraft will gradually reduce its flight speed and hover outside the buffer zone. When approaching the buffer zone from underneath in a vertical direction, the aircraft can ascend and descend in altitude or fly in an opposite direction of the Altitude Zone, but cannot fly toward the Altitude Zone. The aircraft cannot fly back into the buffer zone in a horizontal direction after leaving the buffer zone.



- |                                    |                    |
|------------------------------------|--------------------|
| 1. Restricted Zone/Authorized Zone | 4. Altitude Zone   |
| 2. Buffer Zone                     | 5. Altitude Limit  |
| 3. Ground                          | 6. Flight Altitude |

## Unlocking GEO Zones

**Self-Unlocking** is intended for unlocking Authorization Zones. To complete Self-Unlocking, you must submit an unlocking request via the DJI FlySafe website at <https://fly-safe.dji.com>. Once the unlocking request is approved, you can synchronize the unlocking license through the DJI Pilot 2 app. To unlock the zone, alternatively, you can launch or fly the aircraft directly into the approved Authorization Zone and follow the prompts in DJI Pilot 2 to unlock the zone.

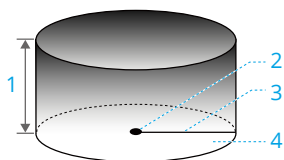
**Custom Unlocking** is tailored for users with special requirements. It designates user-defined custom flight areas and provides flight permission documents specific to the needs of different users. This unlocking option is available in all countries and regions and can be requested via the DJI FlySafe website at <https://fly-safe.dji.com>.

**Unlocking on Mobile Device:** Run the DJI Pilot 2 app and tap GEO Zone Map on the home screen. View the list of the unlocking licenses and tap ⓘ to view details of the unlocking license. A link to the unlocking license and a QR code will be displayed. Use your mobile device to scan the QR code and apply to unlock directly from the mobile device.

- 
- ⚠ • To ensure flight safety, the aircraft will not be able to fly out of the unlocked zone after entering it. If the Home Point is outside the unlocked zone, the aircraft will not be able to return home.
- 

## Flight Altitude and Distance Limits

Max altitude restricts the flight altitude of the aircraft, while max distance restricts the flight radius around the Home Point of the aircraft. These limits can be changed in the DJI Pilot 2 app for improved flight safety.



1. Max Altitude
2. Home Point (Horizontal Position)
3. Max Distance
4. Height of aircraft when taking off

*Strong GNSS Signal*

	Flight Restrictions	Prompt in DJI Pilot 2 App
Max Altitude	Altitude of the aircraft cannot exceed the value set in DJI Pilot 2.	Max flight altitude reached.

	Flight Restrictions	Prompt in DJI Pilot 2 App
Max Distance	The straight-line distance from the aircraft to the Home Point cannot exceed the max flight distance set in DJI Pilot 2.	Max flight distance reached.

#### Weak GNSS Signal

	Flight Restrictions	Prompt in DJI Pilot 2 App
Max Altitude	<ul style="list-style-type: none"> <li>Altitude is restricted to 60 m from the takeoff point if lighting is sufficient.</li> <li>Altitude is restricted to 3 m above the ground if lighting is not sufficient and the 3D infrared sensing system is functioning.</li> <li>Altitude is restricted to 60 m from the takeoff point if lighting is not sufficient and the 3D infrared sensing system is not functioning.</li> </ul>	Max flight altitude reached.
Max Distance	No limit	



- Each time the aircraft is powered on, the altitude limit will be automatically removed as long as the GNSS signal becomes strong (GNSS signal strength  $\geq 2$ ), and the limit will not take effect even if the GNSS signal becomes weak afterwards.
- If the aircraft flies out of the set flight range due to inertia, you can still control the aircraft but cannot fly it any further away.

## Flight Altitude and Maximum Payload

The maximum payload of the aircraft varies at different flight altitudes and battery level. The figure shows the relationship between flight altitude and maximum payload during low battery RTH. Pay attention to the operating altitude and payload.

Flight Altitude (m) / 飞行海拔	1000	2000	3000	4000	5000	6000	7000
Max Payload (kg) / 最大载重	6	5	4.3	3.5	2.5	1.6	1.0

## 2.3 Flight Environment Requirements

1. DO NOT use the aircraft in severe weather conditions including strong winds, snow, fog, and lightning. Make sure to follow the IP rating requirements when flying in the rain.
2. Only fly in open areas. Tall buildings and large metal structures may affect the accuracy of the onboard compass and GNSS system. After takeoff, make sure you are notified with the voice prompt Home Point is updated before continuing flight. If the aircraft has taken off near buildings, the accuracy of the Home Point cannot be guaranteed. In this case, pay close attention to the current position of the aircraft during auto RTH. When the aircraft is close to the Home Point, it is recommended to cancel auto RTH and manually control the aircraft to land at an appropriate location.
3. Fly the aircraft within visual line of sight (VLOS). Avoid mountains and trees blocking GNSS signals. Any flight beyond visual line of sight (BVLOS) can be conducted only when the aircraft performance, the knowledge and skills of the pilot, and the operational safety management are compliant with local regulations for BVLOS. Avoid obstacles, crowds, trees, and bodies of water. For safety reasons, DO NOT fly the aircraft near airports, highways, railway stations, railway lines, city centers, or other sensitive areas, unless any permit or approval is obtained under local regulations.
4. Make sure the beacon and the auxiliary bottom light are enabled at night for flight safety.
5. The performance of the aircraft and its battery is limited when flying at high altitudes. Fly with caution. DO NOT fly above the specified altitude.
6. The braking distance of the aircraft is affected by the flight altitude. The higher the altitude, the greater the braking distance. When flying at high altitudes, you should reserve adequate braking distance to ensure flight safety.
7. GNSS cannot be used on the aircraft in polar regions. Use the vision system instead.
8. DO NOT take off from the surface of a moving car.
9. DO NOT take off from solid-colored surfaces or surfaces with strong reflection such as a car roof.
10. Be careful when taking off in the desert or from a beach to avoid sand entering the aircraft.

11. DO NOT operate the aircraft near bird flocks.

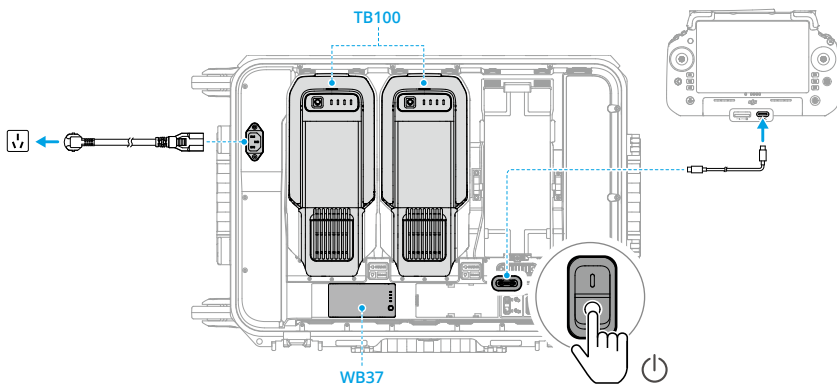
### 3 Using for the First Time

Click the link or scan the QR code to watch the tutorial videos.



<https://enterprise.dji.com/matrice-400/video>

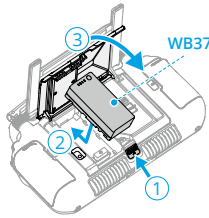
#### 3.1 Charging



- ⚠ • The remote controller cannot be powered on before the internal battery is activated by charging. The internal battery of the remote controller can also be activated after mounting the WB37 battery.

## 3.2 Preparing the Remote Controller

### Mounting the WB37 Intelligent Battery

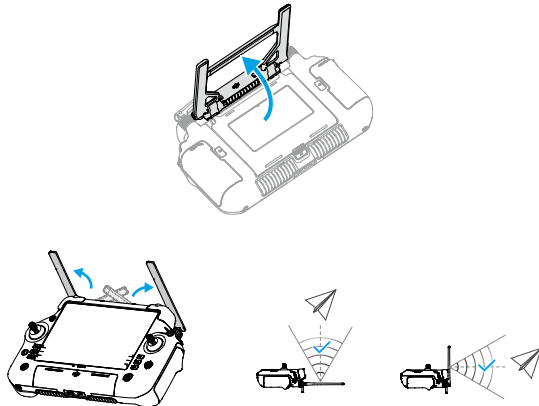


1. Push the rear cover release button to the end to open the rear cover.
2. Insert the battery into the battery compartment and push forward until it clicks firmly in place.

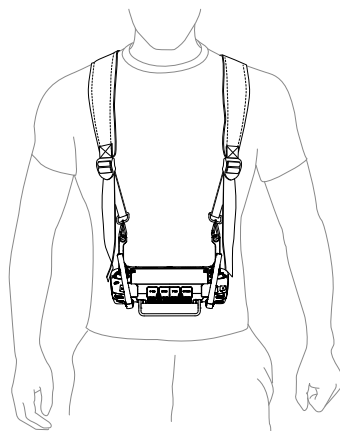
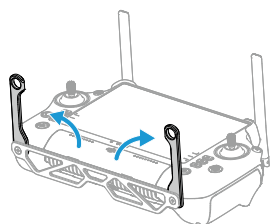


- To remove the battery, press and hold the battery release button.
- The DJI RC Plus 2 sub2G SDR Module is installed by default. DO NOT detach it to avoid affecting normal use. Contact your local dealer if needed.

### Adjusting the Antennas



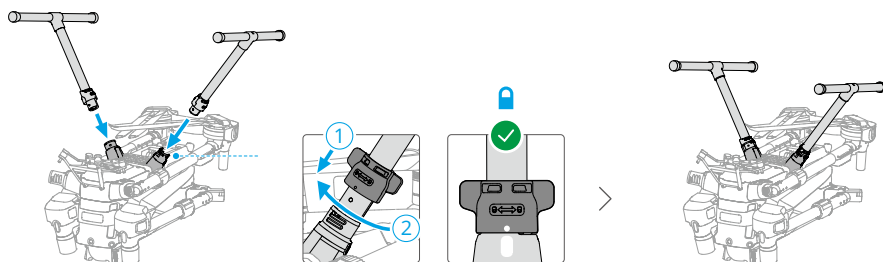
## Mounting the Strap and Bracket Kit



### 3.3 Preparing the Aircraft

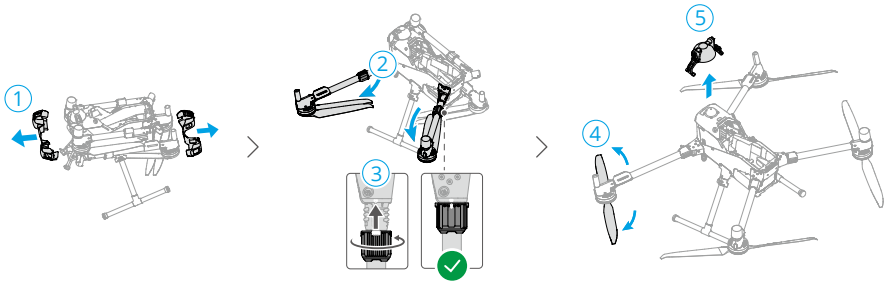
#### Installing the Landing Gears

Insert the landing gear after aligning the marks with the mounting position, slide the gear lock to the end of the landing gear, then rotate to lock.



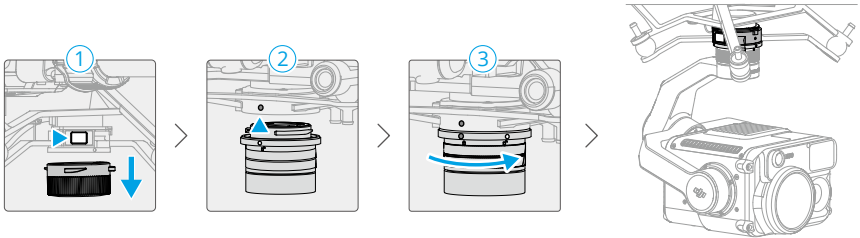
#### Unfolding the Aircraft

Remove the protective devices from the aircraft as shown, make sure to lock the frame arm after unfolding, and unfold the propellers.



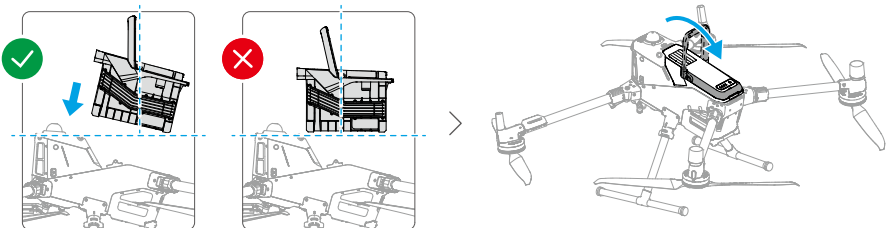
## Mounting the Gimbal Camera

1. Press the gimbal detachment button to remove the cover.
2. Align the white and red dots and insert the gimbal.
3. Rotate the gimbal lock to the locked position.



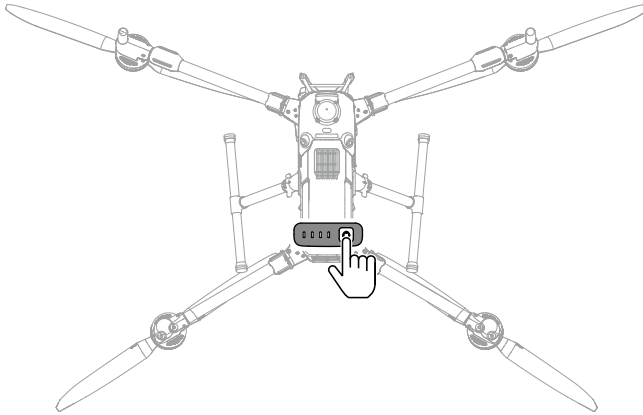
- ⚠ • After installation, make sure that the gimbal lock is locked in place.
- Make sure to press down the gimbal detachment button when removing the gimbal camera.

## Installing the Intelligent Flight Battery



**Check battery level:** Press the power button once.

**Power on:** Press, and then press and hold the power button.



## 3.4 Activation

The aircraft and remote controller require activation before using for the first time. Press, and then press again and hold the power button to power on the devices. Follow the on-screen prompts to activate. Ensure that the remote controller can access the internet during activation.

## 3.5 Basic Flight

### Pre-Flight Checklist

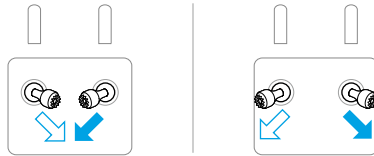
1. Make sure all the devices are fully charged. Make sure the aircraft firmware and DJI Pilot 2 have been updated to the latest version.
2. Make sure there are no foreign objects inside the aircraft. Make sure the air vents and cooling holes of the aircraft are not blocked. Make sure the covers of all the ports have been closed properly if not used.
3. Ensure that all parts of the aircraft are intact, securely installed, and functioning properly. Make sure the propellers and frame arms are unfolded, the arm sleeves are locked in place, and the payload is unobstructed.
4. Make sure the vision systems, the cameras, the infrared sensors, the auxiliary lights, and the LiDAR are clean and not blocked in any way.

5. Power on the aircraft and the remote controller, and toggle the flight mode switch to N-mode. Make sure the remote controller antennas are adjusted to the proper position. Make sure the aircraft and the remote controller are linked, and the remote controller is in control of the aircraft.
6. Make sure your flight area is inside approved zones for UAVs. Place the aircraft on open and flat ground. Make sure there are no obstacles, buildings, or trees nearby and that the aircraft is 5 m away from the pilot. The pilot should be facing the rear of the aircraft.
7. To ensure flight safety, enter the flight view of DJI Pilot 2 and check the parameters on the preflight checklist.
8. Divide the airspace for flight when multiple aircraft are operating simultaneously in order to avoid collision mid-air.

## Starting/Stopping the Motors

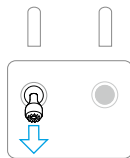
### Starting the Motors

Perform one of the Combination Stick Commands (CSC) as shown below to start the motors. Once the motors have started spinning, release both sticks simultaneously.



### Stopping the Motors

When the aircraft has landed, push the throttle stick down and hold until the motors stop (using Mode 2 as an example).



## Stopping the Motors Mid-Flight

⚠ • Stopping the motors mid-flight will cause the aircraft to crash.

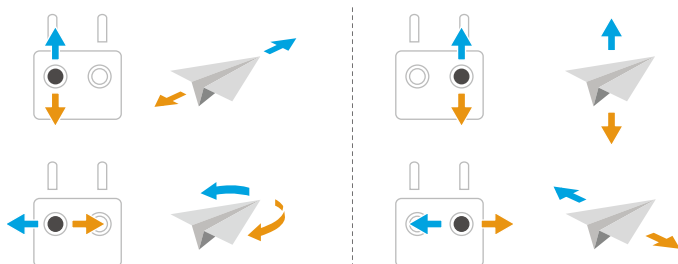
The Combination Stick Command (CSC) can be used to stop the motors once the flight controller detects critical error during flight.

## Controlling the Aircraft

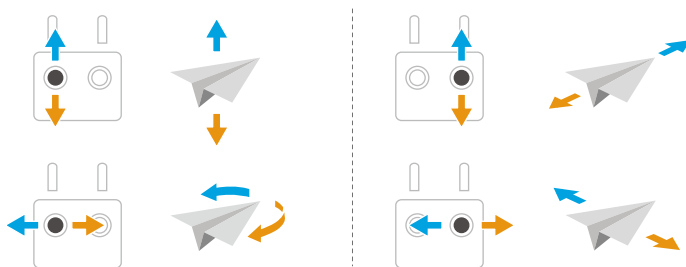
The control sticks of the remote controller can be used to control the aircraft movements. The control sticks can be operated in Mode 1, Mode 2, or Mode 3, as shown below.

The default control mode of the remote controller is Mode 2. In this manual, Mode 2 is used as an example to illustrate how to use the control sticks. The more the stick is pushed away from the center, the faster the aircraft moves.

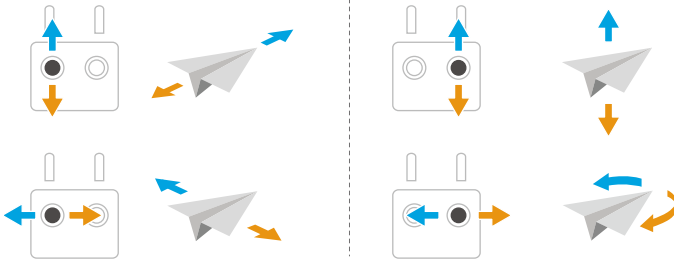
### Mode 1



### Mode 2



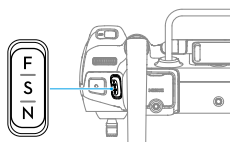
Mode 3



## 4 Aircraft

### 4.1 Flight Modes

The aircraft supports the following flight modes, which can be switched via the Flight Mode switch on the remote controller.



Position	Flight Modes
F	Function mode
S	Sport mode
N	Normal Mode

#### Normal Mode

Normal Mode is suitable for most flight scenarios. The aircraft can hover precisely, fly stably, and use Intelligent Flight Modes. If obstacle sensing is enabled, obstacles can also be avoided using the sensing system.


#### Sport Mode

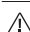
The maximum horizontal flight speed of the aircraft will be higher when compared with Normal mode. Note that obstacle sensing is disabled in Sport mode.

#### Function Mode

Function mode can be set to T-mode (Tripod mode) or A-mode (Attitude mode) in DJI Pilot 2. T-mode is based on N-mode. The flight speed is limited to allow easier control of the aircraft. Attitude mode must be used with caution.

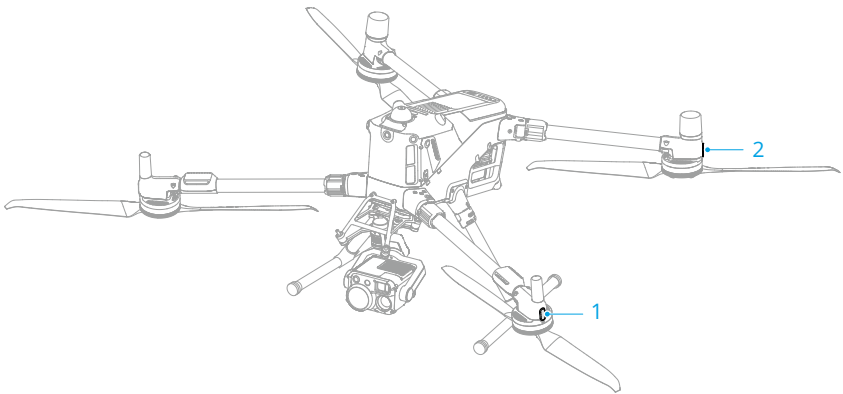
The aircraft automatically changes to Attitude (ATTI) mode when the sensing systems are unavailable or disabled and the GNSS signal is weak or the compass experiences interference. In ATTI mode, the aircraft may be more easily affected by its surroundings. Environmental factors such as wind can result in horizontal drift of the aircraft, which may present hazards, especially when flying in confined spaces. The aircraft will not be able to hover or brake automatically, therefore the pilot should land the aircraft as soon as possible to avoid accidents.

- 
-  DO NOT switch from Normal mode to other modes unless you are sufficiently familiar with the aircraft behavior under each flight mode. You must turn on Multiple Flight Modes in the DJI Pilot 2 app before switching from Normal mode to other modes.

- 
-  Obstacle sensing is disabled in Sport mode, which means the aircraft cannot sense obstacles on its route automatically. The user must stay alert to the surrounding environment and control the aircraft to avoid obstacles.

- The maximum flight speed and braking distance of the aircraft significantly increases in Sport mode. When flying in windless conditions, make sure to maintain enough braking distance to ensure flight safety.
- When the aircraft is ascending or descending in Sport mode or Normal mode in windless conditions, make sure to maintain enough vertical braking distance to ensure flight safety.
- The responsiveness of the aircraft significantly increases in Sport mode, which means a small control stick movement on the remote controller translates into the aircraft moving a large distance. Make sure to maintain adequate maneuvering space during flight.

## 4.2 Aircraft Status Indicator



1. Front LED


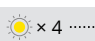
2. Aircraft Status Indicator









When the aircraft is powered on but the motors are not running, the front LEDs glow solid red to display the orientation of the aircraft.

**When the aircraft is powered on, but the motors are not running,** the aircraft status indicators will display the current status of the aircraft.

### Aircraft Status Indicators Descriptions


#### Normal States

	Blinks red, yellow, and green alternately	Powering on and performing self-diagnostic tests
	Blinks yellow four times	Warming up

	Blinks green slowly	GNSS enabled
	Blinks green twice repeatedly	Vision systems enabled
	Blinks yellow slowly	GNSS and vision system disabled (ATTI mode enabled)
Warning States		
	Blinks yellow quickly	Remote controller signal lost
	Blinks red slowly	Takeoff is disabled (e.g., low battery) <sup>[1]</sup>
	Blinks red quickly	Critically low battery
	Solid red	Critical error
	Blinks red and yellow alternately	Compass calibration required

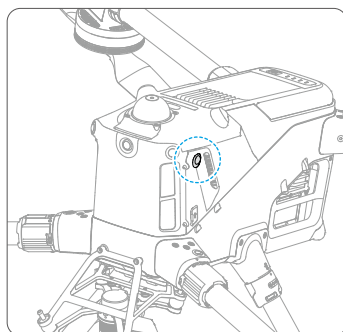
[1] If the aircraft cannot take off while the status indicators are blinking red slowly, view the warning prompt in DJI Pilot 2.

After the motors start, the front LEDs blink red and green alternately, and the aircraft status indicators blink green.

-  • Lighting requirements vary depending on the region. Observe local laws and regulations.

## 4.3 Beacon

The beacon on the aircraft enable you to find the aircraft when flying at night. The beacon can be manually turned on or off in DJI Pilot 2.



- 
- ⚠ • DO NOT look directly at the beacons when they are in use to avoid damaging your eyes.
- 

## 4.4 Propellers

To replace the propeller, contact official support.

### Warnings

---


- ⚠ • Propeller blades are sharp. Handle with care to avoid personal injury or propeller deformation.
  - Make sure that the propellers and motors are installed securely before each flight. Make sure to unfold the propellers.
  - Only use official DJI propellers. DO NOT mix propeller types.
  - Propellers are consumable components. Purchase additional propellers if necessary.
  - Make sure that all propellers are in good condition and clean (without any foreign matter in or on them) before each flight. DO NOT use aged, chipped, or broken propellers. Clean the propellers with a soft, dry cloth if there is any foreign matter attached.
  - To avoid injury, stay away from rotating propellers or motors.
  - To avoid damaging the propellers, place the aircraft correctly during transportation or storage. DO NOT squeeze or bend the propellers. If propellers are damaged, the flight performance may be affected.
  - Make sure the motors are mounted securely and rotating smoothly. Land the aircraft immediately if a motor is stuck and unable to rotate freely.
  - DO NOT attempt to modify the structure of the motors.
  - DO NOT touch or let hands or body parts come in contact with the motors after flight, as they may be hot.
  - DO NOT block any of the ventilation holes on the motors or the body of the aircraft.
  - Make sure the ESCs sound normal when powered on.
-

## 4.5 FPV Camera

The aircraft is equipped with a starlight FPV camera, which can optimize images in poor lighting conditions at night. It helps the pilot to have better visibility of the flight environment and fly safely.

## 4.6 Gimbal Camera

The aircraft supports multiple payload configurations. Visit <https://enterprise.dji.com/matrice-400/faq> to access the payload compatibility list.


- 
-  Using multiple payloads requires different gimbal connectors. Refer to the corresponding product document for more information about the gimbal camera and other payloads.
- 

## 4.7 Intelligent Battery Station

Visit the following link and read the relevant product manual for detailed usage instructions. <https://enterprise.dji.com/matrice-400/downloads>

## 4.8 Intelligent Flight Battery

### Notice

- 
-  • Refer to the Safety Guidelines and the stickers on the battery before use. Users shall take full responsibility for all operation and usage.
- 




1. DO NOT charge an Intelligent Flight Battery immediately after flight as it may be too hot. Wait for the battery to cool down to the allowable charging temperature before charging again.
2. To prevent damage, the battery only charges when the battery temperature is within the allowable charging temperature. The ideal charging temperature is from 22° to 28° C (71.6° to 82.4° F). Charging at the ideal temperature range can prolong battery life. Charging stops automatically if the temperature of the battery cells exceed 55° C (131° F) during charging.
3. Low Temperature Notice:
  - Batteries cannot be used in extremely low-temperature environments of lower than -20° C (-4° F).

- In low-temperature environments, it is recommended to warm up the battery to room temperature before take off and keep the battery warm before use to reduce the warm-up time. In extremely cold weather, insulate the battery as required.
  - The reduced battery capacity in low-temperature environments reduces the wind speed resistance performance of the aircraft. Fly with caution.
  - Take extra caution when flying at a high elevation with a low temperature.
  - When the aircraft is in flight after the above conditions are satisfied, and the DJI Pilot 2 app shows a critically low battery level warning, the user is advised to stop flying immediately and land the aircraft in an appropriate place. During auto landing, users can still use the remote controller to control the aircraft's orientation. For example, users can push the throttle stick to lift the aircraft.
4. A fully charged battery will automatically discharge when it is idle for a period of time. Note that it is normal for the battery to emit heat during the discharging process.
  5. Fully charge the battery at least once every three months to maintain battery health. If the battery is not used for an extended period, battery performance may be affected or may even cause permanent battery damage. If a battery has not been charged or discharged for three months or more, the battery will no longer be covered by the warranty.
  6. For safety purposes, keep the batteries at a low power level in transit. Before transportation, it is recommended to discharge the batteries to 30% or lower.
  7. Over-discharge protection is enabled and discharging stops automatically to prevent over-discharge when the aircraft is idle. Charge the battery to wake it from over-discharge protection before using again. Over-discharge protection is not enabled during flight.
  8. Over-discharging will lead to serious damage of the battery. If the battery level is less than 5% while the aircraft is idle, the battery enters Hibernation mode to prevent over-discharge.

## Checking the Battery Level

Press the power button once to check the current battery level.

The battery level LEDs display the power level of the battery during charging and discharging. The statuses of the LEDs are defined below:

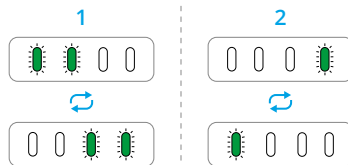
-  LED is on
-  LED is flashing
-  LED is off

Blinking Pattern	Battery Level
	92-100%
	76-91%
	63-75%
	51-62%
	38-50%
	26-37%
	13-25%
	0-12%

## Warming the Battery

The battery has a self-heating feature to be used when operating in low-temperature conditions:

- If the battery is inserted into the aircraft and powered on, self-heating will start automatically when the battery temperature is low. The aircraft will take off after the battery is warmed up.
- If the battery is not inserted into the aircraft, press and hold the power button on the battery to activate self-heating. Press and hold the power button again to stop self-heating.
- When the battery is **Warming Up (1)** and **Keeping Warm (2)**, the battery level LEDs will blink as follows.

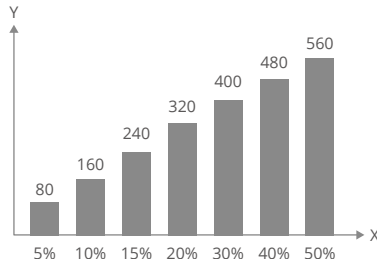


## Battery Storage

When the dock is powered on and working normally, the air conditioning system can adjust the environment temperature making the environment suitable for storage.

Remove the battery from the aircraft if stored separately, refer to the Safety Guidelines and follow the instructions on battery storage.

Storing power at proper levels can extend battery life. Refer to the figure below for the **Maximum Storage Days (Y)** when storing at different **Battery Level (X)**.



- ⚠ • The battery will be damaged once it exceeds the maximum storage period. The battery should no longer be used.
- The actual maximum storage period will vary slightly due to the batteries being part of different production batches and stored in different environments.
- The maximum storage days are theoretically calculated at room temperature. Storing the battery in high-temperature environments will significantly shorten the battery life and the storage days will be significantly reduced.

## 4.9 Aircraft RTK

The built-in RTK module of the aircraft can withstand strong magnetic interference from metal structures and high-voltage lines, ensuring safe and stable flight. When used with a D-RTK product (sold separately) or a DJI-approved Network RTK service, more accurate positioning data can be obtained.

- 💡 • Visit <https://enterprise.dji.com/matrice-400/downloads> to view the accessory user guide and learn about how to use the product.

## Enabling/Disabling RTK


Ensure that the RTK function is enabled and the RTK service type is correctly set before each use. Otherwise, RTK cannot be used for positioning. Go to DJI Pilot 2, tap **Camera View** > > > > 🖱 to view and check the settings.

- 💡 • RTK positioning can be enabled and disabled during flight.
- After RTK is enabled, Maintain Positioning Accuracy Mode can be used.

- In environments without RTK, the GNSS+ function (enabled by default) can improve aircraft positioning accuracy after convergence. For single Beidou version aircraft, GNSS+ cannot converge without RTK differential signals.
- 

## Custom Network RTK

To use Custom Network RTK, make sure that the remote controller has been mounted with DJI Cellular Dongle 2 and install a nano-SIM card, or that the remote controller has a Wi-Fi connection. Keep the remote controller powered on and connected to the internet when using this function. Custom Network RTK can be used to replace the RTK station. Connect the Custom Network RTK account to the designated NTRIP server to send and receive differential data.



1. Make sure that the remote controller is connected to the aircraft and the internet.
2. Go to DJI Pilot 2, tap **Camera View** > \*\*\* > , select Custom Network RTK as the RTK service type and fill in the required information. Then tap **Save**.
3. Wait to connect to the NTRIP server. In the RTK settings, when the status of the aircraft's positioning in the status table shows "FIX", it indicates that the aircraft has obtained and used differential data from Network RTK.

## 4.10 Return to Home

Read this section carefully and make sure that you are familiar with the aircraft action during Return to Home (RTH).

The Return to Home (RTH) function will automatically fly the aircraft back to the last recorded Home Point. RTH can be triggered in three ways: the user actively triggers RTH, the aircraft has low battery, or the remote control signal has been lost (Failsafe RTH is triggered). If the aircraft records the Home Point successfully and the positioning system is functioning normally, when the RTH function is triggered, the aircraft will automatically fly back and land at the Home Point.



- **Home Point:** The Home Point will be recorded at takeoff as long as the aircraft has a strong GNSS signal  <sup>26</sup> or the lighting is sufficient. After the Home Point is recorded, DJI Pilot 2 will issue a voice prompt. If it is necessary to update the Home Point during a flight (such as if you have changed your position), the Home Point can be manually updated in \*\*\* >  > **Control** in DJI Pilot 2.
- 

During RTH, the AR RTH route will be displayed on the camera view, helping you to view the return path and ensure flight safety. The camera view also displays the AR Landing Point. When the aircraft reaches the area above the Home Point, the gimbal camera will

automatically flip downwards. The AR aircraft shadow will appear in the camera view when the aircraft is approaching the ground, enabling you to control the aircraft to land more accurately in your preferred location. The display can be changed in **\*\*\*> 𐄂 > Assist.**

- 
- ⚠ • The AR RTH route is only used for reference, and may deviate from the actual flight route in different scenarios. Always pay attention to the liveview on the screen during RTH. Fly with caution.
  - During RTH, using the gimbal dial to adjust the camera orientation or pressing the customizable buttons on the remote controller to recenter the camera will stop the aircraft from automatically adjusting the gimbal tilt, which may prevent the AR RTH route from being viewed.
- 

## Notice

- 
- ⚠ • The aircraft may not be able to return to the Home Point as normal if the positioning system is functioning abnormally. During Failsafe RTH, the aircraft may enter ATTI mode and land automatically if the positioning system is functioning abnormally.
  - When there is no GNSS, do not fly over water surfaces, buildings with glass surface, or in scenarios where the altitude above the ground is greater than 60 meters. If the positioning system is functioning abnormally, the aircraft will enter ATTI mode.
  - It is important to set a suitable RTH altitude before each flight. Launch DJI Pilot 2 and set the RTH altitude. The default RTH altitude is 100 m.
  - The aircraft cannot sense obstacles during RTH if the environment conditions are not suitable for the sensing system.
  - GEO zones may affect the RTH. Avoid flying near GEO zones.
  - The aircraft may not be able to return to a Home Point if the wind speed is too high. Fly with caution.
  - Pay extra attention to small or fine objects (such as tree branches or power lines) or transparent objects (such as water or glass) during RTH. Exit RTH and control the aircraft manually in an emergency.
  - Set Advanced RTH as **Preset** if there are power lines or transmission towers that the aircraft cannot bypass on the RTH path and make sure the RTH Altitude is set higher than all obstacles.
  - The aircraft will brake and return to home according to the latest settings if the **Advanced RTH** settings in DJI Pilot 2 are changed during RTH.

- If the max altitude is adjusted below the current altitude during RTH, the aircraft will descend to the max altitude first and then continue returning to home.
  - The RTH Altitude cannot be changed during RTH.
  - If there is a large difference between the current altitude and the RTH altitude, the amount of battery power used cannot be calculated accurately due to wind speed differences at different altitudes. Pay extra attention to the battery power prompts and warning prompts in DJI Pilot 2.
  - When the remote controller signal is normal during Advanced RTH, the pitch stick can be used to control the flight speed, but the orientation and altitude cannot be controlled and the aircraft cannot be controlled to fly to the left or right. Constantly pushing the pitch stick to accelerate will increase the battery power consumption speed. The aircraft cannot bypass obstacles if the flight speed exceeds the effective sensing speed. The aircraft will brake and hover in place and exit RTH if the pitch stick is pushed all the way down. The aircraft can be controlled after the pitch stick is released.
  - If the aircraft reaches the altitude limit of the aircraft current location or of the Home Point while it is ascending during Preset RTH, the aircraft stops ascending and returns to the Home Point at the current altitude. Pay attention to flight safety during RTH.
  - If the Home Point is within the Altitude Zone but the aircraft is not in the Altitude Zone, when the aircraft reaches the Altitude Zone it will descend below the altitude limit, which may be lower than the set RTH altitude. Fly with caution.
  - If the OcuSync video transmission is obstructed and disconnects, the aircraft can only rely on 4G enhanced transmission. Considering there may be large obstacles on the RTH route, to ensure safety during RTH, the RTH route will take the previous flight path as reference. When using 4G enhanced transmission, pay more attention to the battery status and the RTH route in the map.
  - The aircraft will exit RTH if the surrounding environment is too complex to complete RTH, even if the sensing system is working properly.
  - RTH cannot be triggered during auto landing.
- 

## Advanced RTH

When Advanced RTH is triggered, the aircraft will automatically plan the best RTH path, which will be displayed in DJI Pilot 2 and will be adjusted according to the environment. During RTH, the aircraft will adjust the flight speed automatically according to environmental factors such as the wind speed, wind direction, and obstacles.

If the control signal between the remote controller and the aircraft is good, exit RTH by pressing the RTH button or the flight pause button on the remote controller. After exiting RTH, you will regain control of the aircraft.

## Trigger Method

### The user actively triggers RTH

During flight, you can trigger RTH by pressing and holding the RTH button on the remote controller.

### Aircraft low battery

During flight, if the battery level is low and only sufficient to fly to the Home Point, a warning prompt will appear in DJI Pilot 2. If you tap to confirm RTH or do not take action before the countdown ends, the aircraft will automatically initiate low battery RTH.

If you cancel the low battery RTH prompt and continue flying the aircraft, the aircraft will land automatically when the current battery level can only support the aircraft long enough to descend from its current altitude.

Auto landing cannot be cancelled but you can still fly the aircraft horizontally by moving the pitch stick and roll stick, and change the descent speed of the aircraft by moving the throttle stick. Fly the aircraft to a suitable place for landing as soon as possible.

- 
- ⚠ • When the Intelligent Flight Battery level is too low and there is not enough power to return home, land the aircraft as soon as possible. Otherwise, the aircraft will crash after the battery power is completely depleted.
  - DO NOT keep pushing the throttle stick upward during auto landing. Otherwise, the aircraft will crash after the battery power is completely depleted.
- 

### Loss of remote controller signal

When the remote controller signal is lost, the aircraft will automatically initiate Failsafe RTH if the Signal Lost Action is set to RTH.

When the lighting and environment conditions are suitable for the vision system, DJI Pilot 2 will display the RTH path that was generated by the aircraft before the signal was lost. The aircraft will start RTH using Advanced RTH according to the RTH settings. The aircraft will remain in RTH even if the remote controller signal is restored. DJI Pilot 2 will update the RTH path accordingly.

When the lighting and environment conditions are unsuitable for the vision system, the aircraft will brake and hover, then enter Original Route RTH.

- If the RTH distance (the horizontal distance between the aircraft and the Home Point) is farther than 50 m, the aircraft adjusts its orientation and flies backward for 50 m on its original flight route before entering Preset RTH.
- If the RTH distance is farther than 5 m but less than 50 m, the aircraft adjusts its orientation and flies straight horizontally back to the home point at the current altitude.
- The aircraft lands immediately if the RTH distance is less than 5 m.

## RTH Procedure

After Advanced RTH is triggered, the aircraft brakes and hovers in place.

- **When the environment or lighting conditions are suitable for the vision system:**
  - The aircraft will adjust its orientation to the Home Point, plan the best path according to the RTH settings and then return to the Home Point if GNSS was available when takeoff.
- **When the environment or lighting conditions are not suitable for the vision system:**
  - If the RTH distance is further than 5 meters, the aircraft will return to home according to the **Preset**.
  - The aircraft lands immediately if the RTH distance is less than 5 m.

## Terrain Data

When the remote controller is connected to the internet, tap **\*\*\* > ⌘ > Assist** in DJI Pilot 2, and enable **Terrain Data**, the remote controller will automatically download the elevation database to the aircraft. Based on the terrain data, the aircraft can plan an optimal flight path to bypass obstacles along the path during RTH.

When terrain data is enabled,

- if the environment or lighting conditions are suitable for the vision system, the aircraft will automatically plan an optimal flight path based on the terrain data and the data collected by the vision system. The optimal flight path will maintain a safe distance from the terrain obstacles.
- If the environment or lighting conditions are not suitable for the vision system, only the terrain data is effective. Safety risks may arise if the model data is inaccurate.



- Based on the terrain data, the aircraft will bypass the area that has weak GNSS signal to ensure aircraft positioning accuracy. If there are suspended models in

the terrain data, such as cranes, power lines, and bridges, the aircraft will try to bypass the obstacles by flying above the objects.

- ⚠ • When the aircraft is using GNSS for positioning, the positioning accuracy is relatively low, and the obstacle bypassing performance may be affected. Users should fly with caution, and pay close attention to the flight route and the camera view.

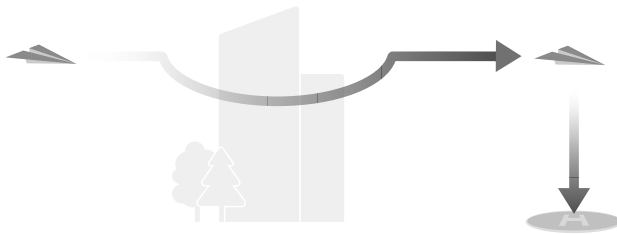
## RTH Settings

RTH settings are available for Advanced RTH. Go to the camera view in DJI Pilot 2, tap \*\*\* > ⚙ > **Control**, and scroll to **Return to Home**.

- **Optimal**



- If the lighting is sufficient and the environment is suitable for the vision system, the aircraft will automatically plan the optimal RTH path and adjust the altitude according to environmental factors, such as obstacles and transmission signals, regardless of the RTH Altitude setting. The optimal RTH path means the aircraft will travel the shortest distance possible to reduce the amount of battery power used and to increase flight time.
  - If the lighting is insufficient and the environment is not suitable for the vision systems, the aircraft will execute Preset RTH based on the RTH Altitude setting.
- **Preset**



RTH Distance/Altitude		Suitable Lighting and Environment Conditions	Unsuitable Lighting and Environment Conditions
RTH distance > 50 m	Current altitude < RTH altitude	The aircraft will plan the RTH path, fly to an open area while bypassing obstacles, ascend to the RTH Altitude, and return to home using the best path.	The aircraft will ascend to the RTH altitude, and fly to the Home Point in a straight line at the RTH altitude. <sup>[1]</sup>
	Current altitude ≥ RTH altitude	The aircraft will return to home using the best path at the current altitude.	The aircraft will fly to the Home Point in a straight line at the current altitude.
RTH distance is within 5-50 m			

[1] If an obstacle is detected ahead, the aircraft will ascend to avoid the obstacle. It will stop climbing once the path ahead is clear and then continue to RTH. If the obstacle height exceeds the altitude limit, the aircraft will brake and hover, and the user will need to take control.

When the aircraft is approaching the Home Point, if the current altitude is higher than the RTH altitude, the aircraft will intelligently decide whether to descend while flying forward according to the surrounding environment, lighting, the set RTH altitude, and the current altitude. When the aircraft reaches above the Home Point, the current altitude of the aircraft will not be lower than the set RTH altitude.

The RTH plans for different environments, RTH trigger methods, and RTH settings are as follows:

RTH trigger method	Suitable Lighting and Environment Conditions The aircraft can bypass obstacles and GEO zones	Unsuitable Lighting and Environment Conditions
The user actively triggers RTH	The aircraft will execute RTH based on the RTH setting:	Preset (The aircraft can ascend to bypass obstacles and GEO zones)
Aircraft low battery		Original route RTH, Preset RTH will be executed when the signal is restored (The aircraft can bypass GEO zones and will brake and hover if there is obstacle)
Loss of remote controller signal		

## Landing Protection

During RTH, landing protection activates once the aircraft begins to land (with downward obstacle sensing enabled).

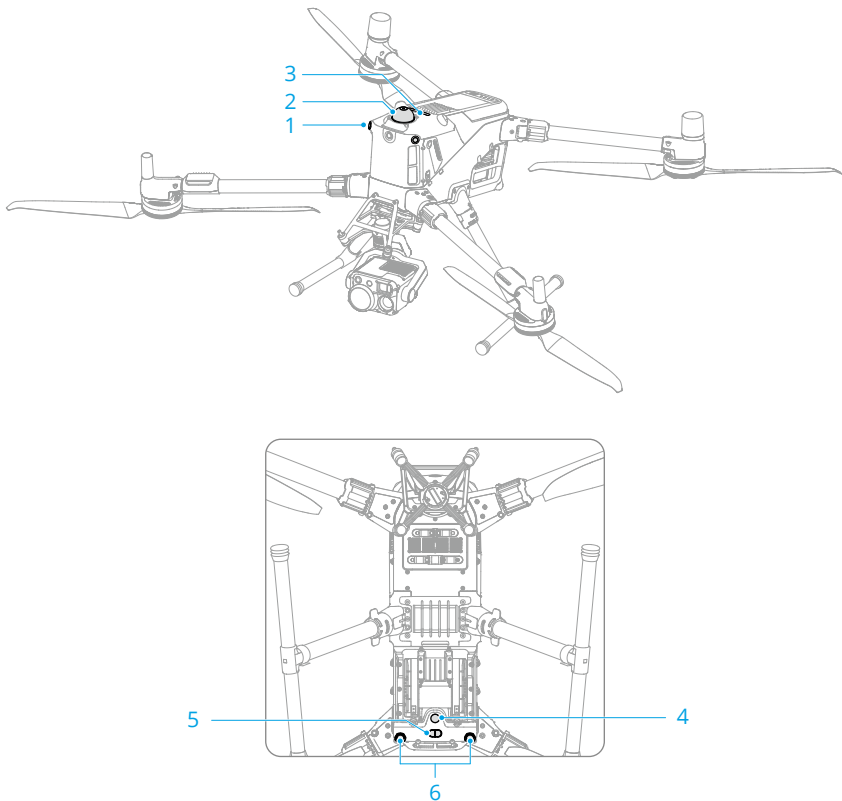
The specific performance of the aircraft is as follows:

- If the ground is determined suitable for landing, the aircraft will land directly.
- If the ground is determined unsuitable for landing, the aircraft will hover and wait for pilot confirmation.
- If landing protection is not operational, DJI Pilot 2 will display a landing prompt. Tap **Confirm** or push the throttle stick all the way down and hold for one second, and the aircraft will land.



- After reaching the area above the Home Point, the aircraft will land precisely on the takeoff point. Performing a precision landing is subject to the following conditions:
    - ♦ The Home Point must be recorded upon takeoff and must not be changed during flight.
    - ♦ During takeoff, the aircraft must vertically ascend at least 7 m before moving horizontally.
    - ♦ The Home Point terrain features must remain largely unchanged.
    - ♦ The terrain features of the Home Point must be sufficiently distinctive. Terrain such as a snow-covered field is not suitable.
    - ♦ The lighting conditions must not be too bright or too dark.
  - During landing, movement of any other control stick apart from the throttle stick will be regarded as giving up precision landing, and the aircraft will descend vertically.
-

## 4.11 Sensing System




- |                                  |                               |
|----------------------------------|-------------------------------|
| 1. Omnidirectional Vision System | 4. Auxiliary Light            |
| 2. Rotating LiDAR                | 5. 3D Infrared Sensing System |
| 3. Top LiDAR                     | 6. Downward Vision System     |

The omnidirectional vision system works best with adequate lighting and clearly marked or textured obstacles. The omnidirectional vision system will activate automatically when the aircraft is in Normal or Tripod mode and **Obstacle Avoidance Action** is set to **Avoid** or **Brake** in DJI Pilot 2. The positioning function is applicable when GNSS signals are unavailable or weak.

The auxiliary light located at the bottom of the aircraft can assist the downward vision system. It will automatically turn on by default in low-light environments when the flight altitude is under 5 m after takeoff. You can also turn it on or off manually in the DJI Pilot

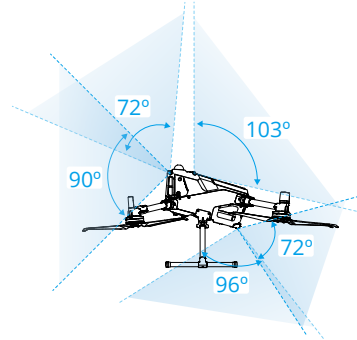
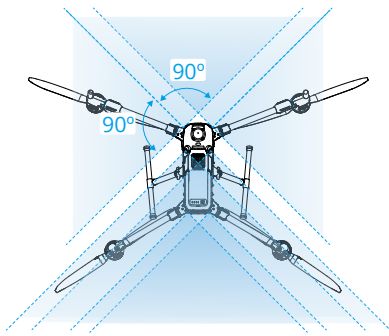
2 app. Each time the aircraft is restarted, the auxiliary light will revert back to the default setting **Auto**.

---

-  Vision Positioning and Obstacle Sensing can be disabled in the settings. When Vision Positioning and Obstacle Sensing are disabled, the aircraft relies only on GNSS to hover, omnidirectional obstacle sensing is unavailable, and the aircraft will not automatically decelerate during descent close to the ground. Extra caution is required when Vision Positioning and Obstacle Sensing are disabled.
  - Disabling Vision Positioning and Obstacle Sensing takes effect only when flying manually, and will not take effect when using auto modes such as RTH, or auto landing.
-

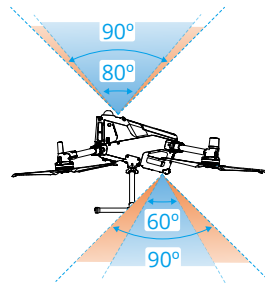
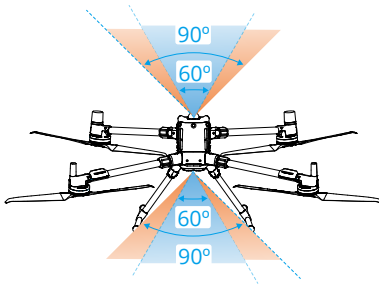
## Detection Range

### Vision System



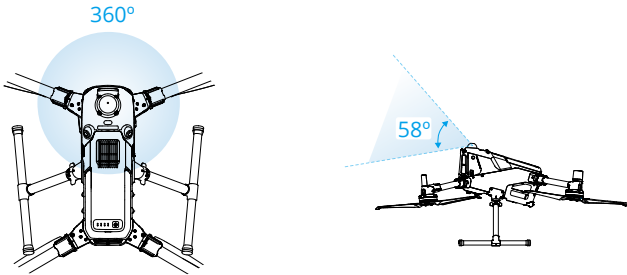
### Infrared Sensing System

#### Top LiDAR

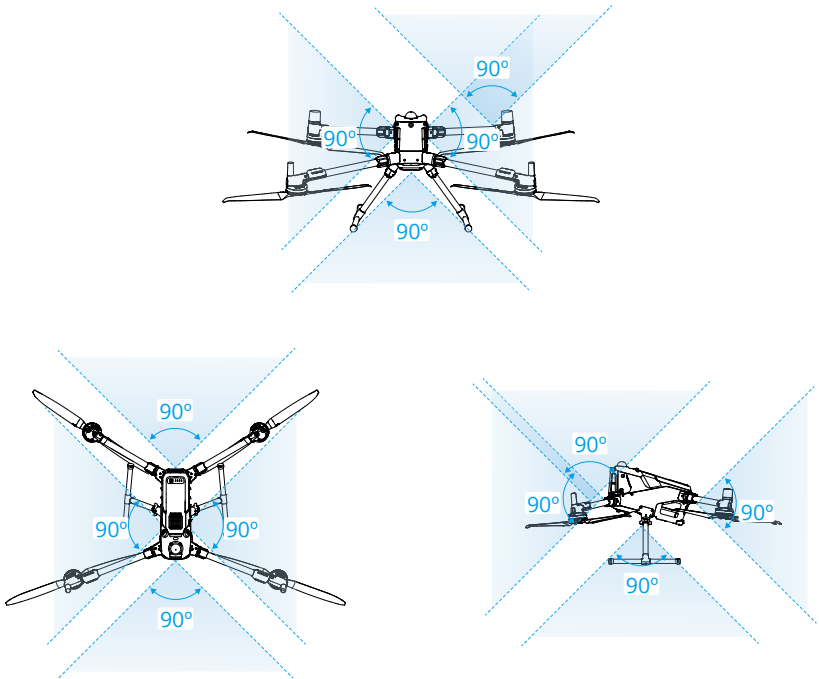


The blue zone indicates the sensor's **detection range** while the orange zone indicates the **no-obstruction zone**. To prevent accidents, **DO NOT** attach any payload that might be in the sensor's no-obstruction zone. If the payload comes into the no-obstruction zone of the **infrared sensing system**, it is recommended to disable **Downward Infrared Sensor Ranging** in DJI Pilot 2 to prevent unnecessary deceleration far from the ground. When disabled, the aircraft cannot decelerate when approaching the ground. Land slowly and cautiously.

## Rotating LiDAR



## mmWave Radar



## Warnings

- ⚠ • Pay attention to the flight environment. The sensing system only works in certain scenarios and cannot replace human control and judgment. During a

flight, always pay attention to the surrounding environment and the warnings in DJI Pilot 2, and be responsible for and maintain control of the aircraft at all times.

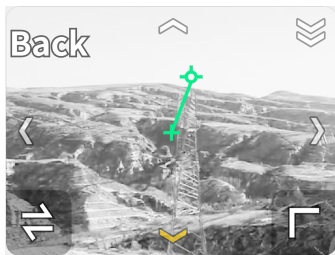
- If there is no GNSS available, the downward vision system will assist with aircraft positioning, and works best when the aircraft is at an altitude from 0.5 m to 30 m. Extra caution is required if the altitude of the aircraft is above 30 m as the vision positioning performance may be affected.
- In low-light environments, the vision systems may not achieve optimal positioning performance even if the auxiliary bottom light is turned on. Fly with caution if the GNSS signal is weak in such environments.
- The Downward Vision System may not function properly when the aircraft is flying over water. Therefore, the aircraft may not be able to actively avoid water below it when landing. It is recommended to maintain flight control at all times, make reasonable judgments based on the surrounding environment, and avoid over-relying on the vision system.
- The vision systems cannot accurately identify large structures with frames and cables, such as tower cranes, high-voltage transmission towers, high-voltage transmission lines, cable-stayed bridges, and suspension bridges.
- The vision system cannot work properly near surfaces without clear pattern variations or where the light is too bright or too dark. The vision system cannot work properly in the following situations:
  - ♦ Flying near monochrome surfaces (e.g., pure black, white, red, or green surfaces).
  - ♦ Flying near highly reflective surfaces.
  - ♦ Flying over water or transparent surfaces.
  - ♦ Flying near moving surfaces or objects.
  - ♦ Flying in an area with frequent and drastic lighting changes.
  - ♦ Flying near extremely dark (< 0.5 lux) or bright (> 40,000 lux) surfaces.
  - ♦ Flying near surfaces that strongly reflect or absorb infrared waves (e.g., mirrors).
  - ♦ Flying near surfaces without clear patterns or textures.
  - ♦ Flying near surfaces with repeating identical patterns or textures (e.g., tiles with the same design).
  - ♦ Flying near obstacles with small surface areas (e.g., tree branches and power lines).
- Keep the sensors clean at all times. DO NOT scratch or tamper with the sensors. DO NOT use the device in dusty or humid environments.

- DO NOT fly when it is rainy, smoggy, or the visibility is lower than 100 m.
  - DO NOT obstruct the sensing system.
  - Check the following each time before takeoff:
    - ◆ Make sure there are no stickers or any other obstructions over the glass of the infrared sensing systems and vision systems.
    - ◆ Use a soft cloth if there is any dirt, dust, or water on the glass of the vision system and infrared sensing system. DO NOT use any cleaning product that contains alcohol.
    - ◆ Contact DJI Support if there is any damage to the lenses of the infrared sensing and vision system.
  - The aircraft can fly at any time of the day or night. However, the vision system becomes unavailable when flying the aircraft in low-light environments. Fly with caution.
  - The vision system cameras may need to be calibrated after being stored for an extended period. A prompt will appear in DJI Pilot 2 and calibration will be performed automatically.
  - LiDAR and built-in millimeter-wave radar have detection blind spots and limited detection capabilities for obstacles of different sizes and materials. Obstacle sensing may fail in the following scenes, fly with caution:
    - ◆ In special weather conditions such as rain, snow, fog, or dust.
    - ◆ Presence of fast-moving objects around the flight route (e.g., operating wind turbines, moving tower cranes, birds in flight, etc.).
    - ◆ Presence of thin brown branches (e.g., when flying in dense forests); or dark linear objects with a diameter of less than 12 mm (e.g., thin Ethernet cables, black rubber wires).
    - ◆ Presence of oblique power lines when the aircraft is ascending or descending.
    - ◆ When the aircraft is flying towards the sun, the obstacle sensing ability of the LiDAR decreases.
    - ◆ Presence of water droplets or severe dirt on the LiDAR surface.
  - Make sure to remove the protective cover before use. To avoid damaging the product surface, install the protective cover when it is not in use. DO NOT touch the LiDAR directly with your bare hands. Regularly wipe it with a soft cloth and keep it clean to avoid affecting the obstacle sensing performance. DO NOT use alcohol or other solvents when cleaning.
-

## Vision Assist

The vision assist view changes the image on the view from the corresponding vision sensors according to the flight speed direction to help users navigate and observe obstacles during flight.

- 
- ⚠ • When using Vision Assist, the quality of the video transmission may be lower due to transmission bandwidth limits or the video transmission resolution of the screen on the remote controller.
  - It is normal for propellers to appear in the vision assist view.
  - Vision Assist should be used for reference only. Glass walls and small objects such as tree branches, electrical wires, and kite strings cannot be recognized accurately.
  - Vision assist is not available when the aircraft has not taken off or when the video transmission signal is weak.
- 



Tap the arrow to switch between different directions of the vision assist view. Tap and hold to lock the direction. Tap the center of the screen to maximize the vision assist view.

- 
- ⚠ • When the direction is not locked in a specific direction, the vision assist view automatically switches to the current flight direction. When flying forward, the FPV camera displays a color view. In good lighting conditions, the left, right, and rear vision assist views are in color, while the downward view is in black and white. Tap any other directional arrow to switch the direction of the vision assist view for a while before returning to the view of the current flight direction.
  - When the vision assist direction is locked in a specific direction, tap any other arrow to unlock and switch the vision assist view.
-

## 4.12 Advanced Pilot Assistance Systems

The Advanced Pilot Assistance Systems (APAS) feature is available in Normal mode and Tripod mode. When APAS is enabled, the aircraft will continue to respond to your commands and plan its path according to both control stick inputs and the flight environment. APAS makes it easier to avoid obstacles, obtain smoother footage, and give a better flying experience.

When APAS is enabled, the aircraft can be stopped by pressing the Flight Pause button on the remote controller. The aircraft brakes and hovers for three seconds and awaits further pilot commands.

To enable APAS, open DJI Pilot 2, go to **\*\*\* > ⚙**, and select **Avoid** in Obstacle Avoidance.

### Warnings

- ⚠ • Make sure to use APAS when the sensing system is available. Pay attention to DJI Pilot 2 and make sure APAS is working normally.
- Make sure there are no people, animals, objects with small surface areas (e.g., tree branches), or transparent objects (e.g., glass or water) along the desired flight path.
- Make sure to use APAS when the vision system and LiDAR are available or the GNSS signal is strong. APAS may not function properly when the aircraft is flying over water or snow-covered areas.
- Be extra cautious when flying in extremely dark (<300 lux) or bright (>10,000 lux) environments.
- APAS may not function properly when the aircraft is flying near flight limits or in a GEO zone.
- When the lighting becomes insufficient and the sensing system, such as vision system, is partially unavailable, the aircraft will switch from bypassing obstacles to braking and hovering. You need to center the control stick and then to continue controlling the aircraft.

### Landing Protection

If **Obstacle Avoidance Action** is set to **Avoid** or **Brake**, Landing Protection will be activated when you push the throttle stick down to land the aircraft. Landing Protection is enabled once the aircraft begins to land.

- If the ground is determined to be suitable for landing, the aircraft will land directly.

- If the ground is determined to be unsuitable for landing, the aircraft will hover when the aircraft descends to a certain height above ground. Push down on the throttle stick for at least five seconds, and the aircraft will land without obstacle sensing.

### 4.13 DJI AirSense

Airplanes with an ADS-B transceiver will actively broadcast flight information including locations, flight paths, speeds, and altitudes. DJI aircraft incorporated with the DJI AirSense technology are capable of receiving flight information broadcast from ADS-B transceivers that comply with 1090ES or UAT standards within a radius range of 10 kilometers. Based on the received flight information, DJI AirSense can analyze and obtain the location, altitude, orientation, and velocity of the surrounding manned airplanes, and compare such figures with the current position, altitude, orientation, and velocity of the DJI aircraft to calculate in real time the potential risk of collision with the surrounding manned airplanes. DJI AirSense will then display a warning message in DJI Pilot 2 according to the risk level.

DJI AirSense only issues warning messages on approaches by specific manned airplanes under special circumstances. Please be aware that DJI AirSense has the following limitations:

- DJI AirSense can only receive messages sent by airplanes installed with an ADS-B Out device that is in compliance with 1090ES (RTCA DO-260) or UAT (RTCA DO-282) standards. DJI devices cannot receive broadcast messages from or display warnings on airplanes not equipped with properly functioning ADS-B Out devices.
- If there is an obstacle between a manned aircraft and a DJI aircraft, DJI AirSense will not be able to receive ADS-B messages from the aircraft or send warnings to the user. Keenly observe your surroundings and fly with caution.
- Warning prompts may be sent with delay if DJI AirSense experiences any interference from the surrounding environment. Keenly observe your surroundings and fly with caution.
- Warning prompts may not be received if the DJI aircraft is unable to obtain information on its own location.
- DJI AirSense cannot receive ADS-B messages from manned airplanes or send warnings to the user when it is disabled or misconfigured.

When a risk is detected by the DJI AirSense system, the AR projection display will appear on the current view in DJI Pilot 2, intuitively showing the distance between the DJI aircraft and the airplane, and issuing a warning alert. Users should follow the instructions in DJI Pilot 2 upon receiving the alert.

**Notice:** A blue airplane icon will appear on the map.

**Caution:** The app will display the message **Manned aircraft detected nearby. Fly with caution.** A small orange square icon with the distance information will appear on the camera view, and an orange airplane icon will appear on the map view.

**Warning:** The app will display the message **Collision risk. Descend or ascend immediately.** If the user is not operating, the app will display **Collision risk. Fly with caution.** A small red square icon with the distance information will appear on the camera view, and a red airplane icon will appear on the map view. The remote controller will vibrate to alert.

## 4.14 IP Rating of the Aircraft

1. Under stable laboratory conditions, the DJI Matrice 400 aircraft achieves an IP55 protection rating of IEC 60529 standards when equipped with the Intelligent Flight Battery. The protection rating is not permanent and may lower over an extended period.
  - DO NOT fly when the amount of rainfall exceeds 100 mm/24 h.
  - Make sure the battery surfaces, battery ports, and the battery compartment ports and surfaces are dry before inserting the battery.
  - The product warranty does not cover water damage.
2. The aircraft does not achieve an IP55 protection rating in the following circumstances:
  - Batteries other than the official battery are used.
  - The battery is not firmly installed.
  - The covers for the expansion ports are not firmly closed if not used.
  - The cellular dongle compartment or external devices such as the speaker or the spotlight are not firmly installed or the screws are not tightened.
  - The aircraft shell is cracked or the water-resistant adhesive is aged or damaged.
3. The body surface may become discolored after long-term use. However, such color change does not affect the performance and IP rating of the device.

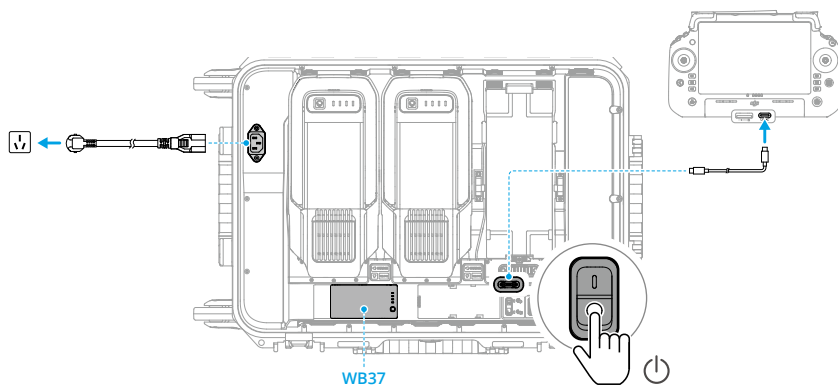
## 4.15 Expansion Ports

The aircraft is equipped with E-Port V2 to support SDK, enabling more feature development. Visit <https://developer.dji.com> for more information about SDK development and instructions.

## 5 Remote Controller

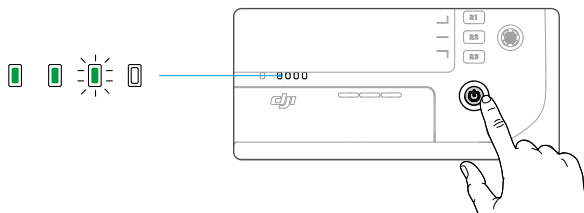
### 5.1 Charging the Battery

- 💡 Fully discharge and charge the remote controller every three months. The battery depletes when stored for an extended period.
- ⚠️ It is recommended to use the included USB-C to USB-C cable for optimal charging.

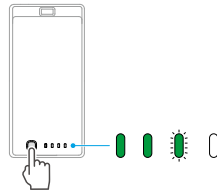


#### Checking the Battery Level

Press the power button on the remote controller once to check the internal battery level.

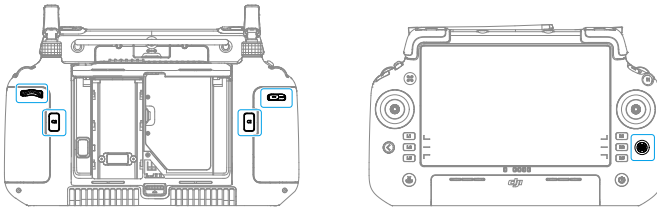


Press the battery level button on the external battery once to check the battery level.



## 5.2 Customizable Button

The C1, C2, C3, C4 and 5D buttons are customizable. Open DJI Pilot 2 and enter camera view. Tap **...** > to configure the functions of these buttons. In addition, combinations can be customized using the C1, C2, and C3 buttons with the 5D button.



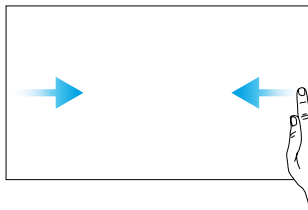
## 5.3 Button Combinations

Some frequently used features can be activated by using combination buttons. To use combination buttons, press and hold the back button and operate the other button in the combination.

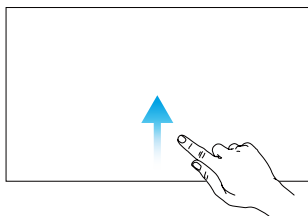
The default button combinations cannot be changed. The following table displays the function of each default button combination.

Combination Operation	Function
Back Button + Left Dial	Adjust Brightness
Back Button + Right Dial	Adjust Volume
Back Button + Record Button	Record Screen
Back Button + Shutter Button	Screenshots
Back Button + 5D Button	Toggle up - Homepage; Toggle down - Shortcut settings; Toggle left - Recently opened apps.

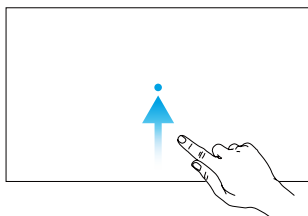
## 5.4 Operating the Touchscreen



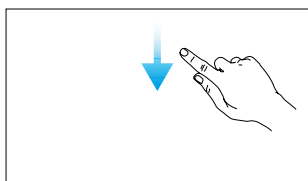
Slide from the left or right to the center of the screen to return to the previous screen.



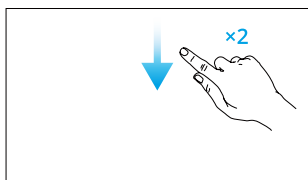
Slide up from the bottom of the screen to return to the homepage.



Slide up from the bottom of the screen and hold to access recently opened apps.











Slide down from the top of the screen to open the status bar when in DJI Pilot 2. The status bar displays information such as time, Wi-Fi signal, and remote controller battery level.



Slide down twice from the top of the screen to open Quick Settings when in DJI Pilot 2. Slide down once from the top of the screen to open Quick Settings when not in DJI Pilot 2.









## 5.5 Remote Controller LEDs

### Status LED

Blinking Pattern	Descriptions
 — Solid red	Disconnected from the aircraft.
 ..... Blinks red	The battery level of the aircraft is low.
 ..... Solid green	Connected with the aircraft.
 ..... Blinks blue	The remote controller is linking to an aircraft.
 — Solid yellow	Firmware update failed.
 — Solid blue	Firmware update successful.
 ..... Blinks yellow	The battery level of the remote controller is low.
 ..... Blinks cyan	Control sticks not centered.

### Battery Level LEDs

The battery level LEDs indicate the battery level of the remote controller.

Blinking Pattern	Battery Level
	88-100%
	75-87%
	63-74%
	50-62%
	38-49%
	25-37%
	13-24%
	0-12%

## 5.6 Remote Controller Alert

The remote controller beeps to indicate an error or warning. Pay attention when prompts appear on the touchscreen or in DJI Pilot 2.

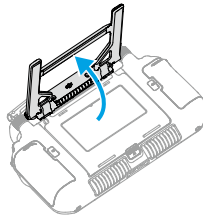
Slide down from the top of the screen and select Mute to disable all alerts, or slide the volume bar to 0 to disable some alerts.

The remote controller sounds an alert during RTH, which cannot be cancelled. The remote controller sounds an alert when the battery level of the remote controller is low. A low battery level alert can be cancelled by pressing the power button. When the battery level is critically low, the alert cannot be cancelled.

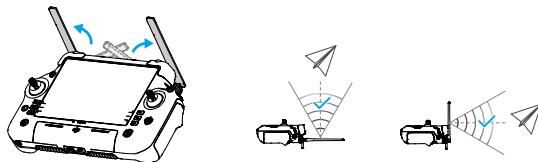
There will be an alert if the remote controller is not used for a period of time while it is powered on but is not connected to the aircraft. It will automatically power off after the alert stops. Move the control sticks or press any button to cancel the alert.

## 5.7 Optimal Transmission Zone

Unfold the DJI RC Plus 2 sub2G SDR Module antennas.



Lift and adjust the antennas. The strength of the remote controller signal is affected by the position of the antennas.



Adjust the direction of the external RC antennas of the remote controller and make sure their flat side is facing the aircraft, so that the controller and aircraft are within the optimal transmission zone.

- 
- ⚠ • DO NOT overstretch the antennas to avoid damage. Contact DJI Support to repair the remote controller if the antennas are damaged. A damaged antenna will greatly decrease the performance of the remote controller and might affect flight safety.
  - During flight, DO NOT use other 2.4 GHz or 5.8 GHz communication devices in the same frequency band at the same time, so as not to interfere with the

communication signal of the remote controller. For example, avoid enabling mobile phone Wi-Fi.

- A prompt will appear in if the transmission signal is weak during flight. Adjust the antennas to make sure that the aircraft is in the optimal transmission range.

## 5.8 Linking the Remote Controller

The remote controller is already linked to the aircraft when purchased together as a combo. Otherwise, follow the steps below to link the devices.

### Method 1: Using Combination Buttons

1. Power on the aircraft and the remote controller.
2. Press the C1, C2, and Record buttons simultaneously until the status LED blinks blue and the remote controller beeps.
3. Press and hold the power button of the aircraft for at least five seconds. The aircraft beeps, and its battery level LEDs blink in sequence to indicate it is ready to link. The remote controller will beep twice, and its status LED will turn solid green to indicate linking is successful.

### Method 2: Using App

1. Power on the aircraft and the remote controller.
2. Run DJI Pilot 2 and tap **Link Remote Controller** to link. The status LED of the remote controller blinks blue, and the remote controller will beep during linking.
3. Press and hold the power button of the aircraft for at least five seconds. The aircraft beeps, and its battery level LEDs blink in sequence to indicate it is ready to link. The remote controller will beep twice, and its status LED will turn solid green to indicate linking is successful.



- Make sure the remote controller is within 0.5 m of the aircraft during linking.
- Make sure the remote controller is connected to the internet when logging in using a DJI account.

## 5.9 HDMI Settings

The touchscreen can be shared to a display after connecting the HDMI port of the remote controller.

The resolution can be set by entering  > **Display** > **HDMI**.

## 5.10 Dual Operator Mode

The aircraft supports dual operator mode that allows two pilots to operate an aircraft simultaneously. Either pilot may gain control of the aircraft or the gimbal camera as needed, allowing for more flexibility during the operation.

### Setting the Dual Operator Mode


Before using Dual Operator mode, the pilot needs to link the aircraft with both remote controllers A and B.

1. Run the DJI Pilot 2 App.
2. Enter the homepage and tap **Remote Controller A/B** to activate linking. During linking, the status LED of the remote controller will blink blue and the remote controller will beep. Press and hold the power button on the aircraft for at least five seconds. The battery level LEDs of the aircraft will blink in sequence and beep twice to indicate that linking has started. When linking is successful, the aircraft status indicators will blink green, the remote controller beep twice, and the remote controller status LED turn solid green.
3. Thereafter, the first remote controller connected to the aircraft is granted control of both the aircraft and the gimbal camera, and the aircraft authority button will turn green. Meanwhile, the second remote controller is not given any control, and its aircraft authority button will turn white.



### Using Dual Operator Mode

#### Gain Control

- **Aircraft Control:** Press the aircraft authority button once to gain control of the aircraft. After gaining aircraft control, the pilot can lock it by pressing and holding the aircraft authority button on the remote controller. The aircraft authority button will turn blue when the control is locked.
- **Gimbal Camera Control:** Tap  on the upper right corner of the gimbal camera view to gain control of the gimbal camera.

The control sticks are used for operating the gimbal if the remote controller only has control over the gimbal camera. When the remote controller has full control, the control sticks are used for controlling the aircraft and the dials for adjusting gimbal movement.

### Transfer of Control

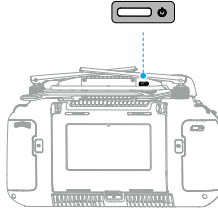
- In Dual Operator mode, a control transfer mechanism will be triggered if one of the remote controllers is disconnected from the aircraft. When this happens, control of the gimbal camera will shift from the disconnected remote controller to the other remote controller still connected with the aircraft. If the disconnected remote controller also has aircraft control, the other remote controller will receive a notification that the user may manually take over aircraft control. If the pilot of the connected remote controller does not take over aircraft control or does not choose an option within the specified time period, the aircraft will activate the failsafe action.
- If the disconnected remote controller reconnects with the aircraft during the flight, it will not resume its previous control and will by default have no control of any device. The pilot may gain control of the devices again as needed.

### Explanation of Control Rights

- Under normal circumstances, the pilots of both remote controllers can adjust flight-related settings, such as for the flight controller system, vision systems, batteries, and video transmission. However, if aircraft control is locked, only the remote controller with aircraft control can be used to adjust these settings.
- Only the remote controller with aircraft control can be used to start or cancel RTH.
- Only the remote controller with control of the gimbal camera can be used to adjust relevant settings for the gimbal and camera, and to download or play back media files.
- Remote controller A can be used to update the firmware of all modules at the same time when connected with the aircraft, but remote controller B can only be used to update the firmware of remote controller B.
- Uploading Logs Using DJI Pilot 2: the pilot can upload the logs of both the aircraft and remote controller A through remote controller A, and can upload the logs of remote controller B through remote controller B.
- The pilot of remote controller B cannot adjust settings for network RTK or custom network RTK.
- Remote controller B cannot be used to update the Fly Safe database.
- Other non flight-related operations can be performed using either remote controller.

## 5.11 DJI RC Plus 2 sub2G SDR Module

The DJI RC Plus 2 sub2G SDR Module is installed by default. The LED of the DJI RC Plus 2 sub2G SDR Module is solid red when the remote controller is powered on and the DJI RC Plus 2 sub2G SDR Module is connected properly.

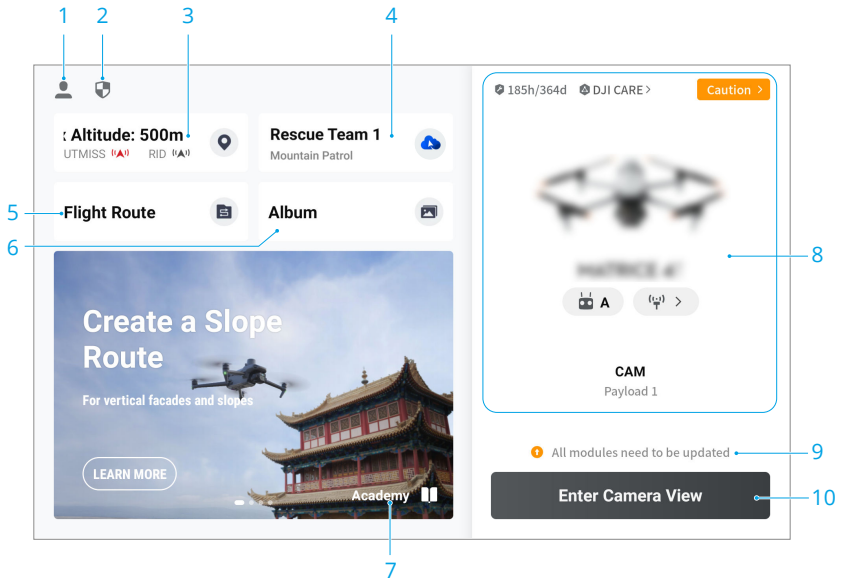


In the camera view, tap **...** > **HD** > **Work Frequency** > **Multi-Frequency**, then enable the sub2G frequency.

- 
- ⚠ • Operating frequency allowed varies among countries and regions. Please refer to local laws and regulations for more information.
  - When the aircraft is used as an onboard relay, the sub2G frequency is unavailable.
  - In Dual Operator Mode, the corresponding frequency can only be used when both controller A and controller B have DJI RC Plus 2 sub2G SDR Module installed. Otherwise, the frequency is unavailable.
-

## 6 DJI Pilot 2 App

### 6.1 Homepage



#### 1. Profile

Tap to view flight records, download offline maps, manage GEO Zone unlocking, read help documentation, select a language, and more.

#### 2. Data and Privacy

Tap to manage network security modes, set security codes, manage app cache, and clear DJI device logs.

#### 3. GEO Zone Map

Tap to view whether the current operating area is in a restricted zone or authorization zone, and the current flyable altitude.

#### 4. Cloud Service

Tap to view the connection status of the cloud service, select the type of service, or switch from the currently connected service to another cloud service.

- ☀️ • If the DJI account logged in by the user has the DJI FlightHub 2 license, tap the cloud service on the app homepage to automatically log in to DJI FlightHub 2.

Visit the DJI FlightHub 2 page on the DJI official website for more information: <https://www.dji.com/flighthub-2>.

---

## 5. Flight Route

Tap to enter the flight route library. Users can create and view all flight tasks. Flight tasks can be imported and exported in batches to the remote controller or another external mobile storage device. If DJI FlightHub 2 is connected, you can also view all flight tasks sent from the cloud or upload local tasks to the cloud.

## 6. Album

## 7. Academy

## 8. Device Status

## 9. Firmware Update Shortcut

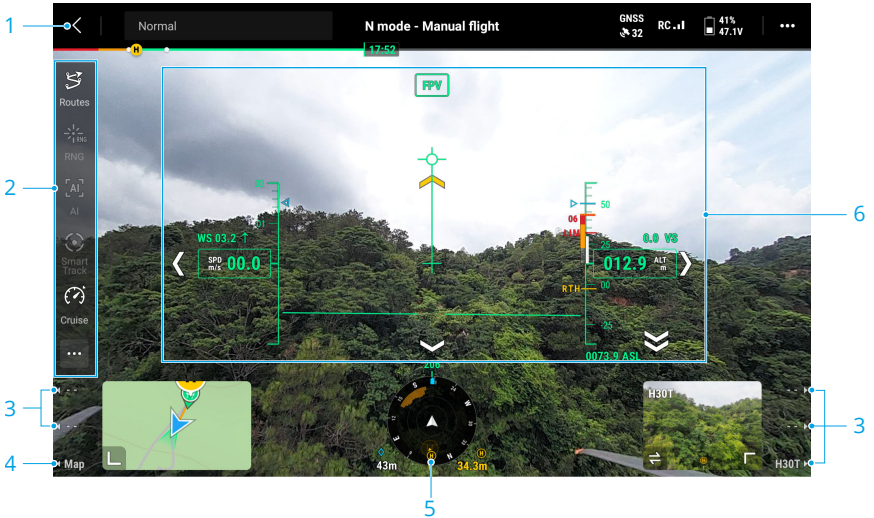
- ☰ • A consistent firmware update is required when the firmware versions of some modules of the aircraft are inconsistent with the compatible version of the system.
- 

## 10. Enter Camera View

# 6.2 Camera View

## FPV Camera View

After tapping **Enter Camera View** on the homepage of DJI Pilot 2 and finishing the preflight check, you will be directed to FPV camera view by default.



## 1. Top Bar

## 2. Function Bar

The Function Bar is a shortcut to intelligent functions. Click **...** to expand the full function list and edit the Function Bar.

## 3. Payload Function Interface

When mounting different payloads, pressing the L1/L2/L3 or R1/R2/R3 buttons on the remote controller will trigger corresponding functions. Please refer to the actual view.

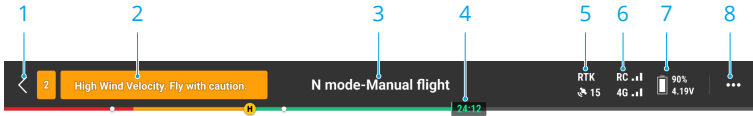
## 4. Map View

## 5. Navigation Display

## 6. Primary Flight Display (PFD)

- !** • When mounting different payloads, the camera view will vary accordingly. Refer to the product documentation of the payload for details.

## Top Bar



1. **Back**

2. **System Status Bar**

If a new alert appears during flight, it will be displayed here and continue flashing. Tap to view the information and stop the flashing.

3. **Flight Status**

Tap to enter the Preflight Check view.

4. **Battery Level Indicator Bar**

Displays the battery level and the remaining flight time of the Intelligent Flight Battery after takeoff.

5. **GNSS Positioning Status**

Displays the number of searched satellites. When the RTK service is not enabled, the RTK icon is gray. When the RTK data is converged, the RTK icon will turn white. Tap the GNSS positioning status icon to view the RTK mode and GNSS positioning information.

6. **Signal Strength**

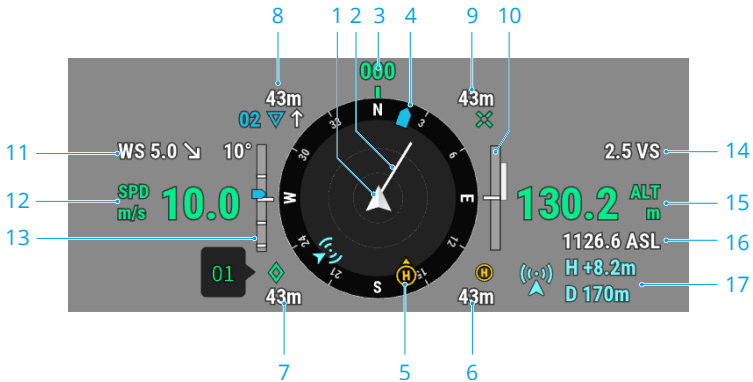
7. **Intelligent Flight Battery Level**

Displays the battery level of the aircraft. Tap to view battery level, voltage, and temperature.

8. **Settings**

Tap to expand the settings menu to set the parameters of each module.

## Navigation Display



Navigation Display only shows the speed, altitude and other information on the left and right sides in gimbal camera view. In FPV camera view, such information is shown in the form of Primary Flight Display.

### 1. Aircraft

### 2. Aircraft Horizontal Speed Vector

The white line drawn by the aircraft indicates the flight direction and speed of the aircraft.

### 3. Aircraft Orientation

Displays the current orientation of the aircraft, with 0 degrees as North on the compass.

### 4. Gimbal Orientation

Displays the horizontal orientation of the gimbal relative to the aircraft.

### 5. Home Point and Remote Controller Orientations

- Displays the position of the Home Point (yellow H) and the remote controller (blue dot) relative to the aircraft.
- If the remote controller and the Home Point are close to each other, only the Home Point will be displayed.
- The remote controller dot features an arrow to indicate the orientation. If the signal is weak during flight, adjust the remote controller's direction so that the arrow points towards the aircraft.

### 6. Home Point Distance

Displays the horizontal distance between the Home Point and the aircraft.

**7. PinPoint Information**

Displays the name of the PinPoint and the horizontal distance from the aircraft to the PinPoint, when PinPoint is enabled.

**8. Waypoint Information**

Displays the name of the waypoints, the horizontal distance from the aircraft to the waypoint, and the ascending or descending trajectory of the flight route, during a flight route.

**9. RNG Target Point Information**

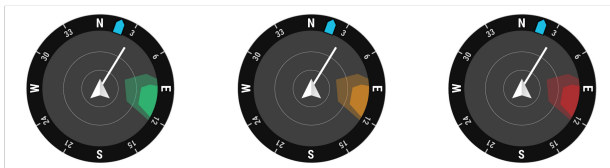
Displays the horizontal distance from the aircraft to the target point, when the RNG laser rangefinder is enabled.

**10. Vertical Obstacle Sensing Information**

Once an obstacle is detected in the vertical direction, an obstacle bar icon will appear. When the aircraft reaches the warning distance, the icon will glow red and orange, and the remote controller will emit long beeping sounds. When the aircraft reaches the obstacle braking distance, the icon will glow red, and the remote controller will emit short beeping sounds. Both the obstacle braking distance and the warning distance can be set in DJI Pilot 2. Follow the prompted instructions in the app to set them. The white line shows the position of the aircraft in three seconds. The higher the vertical speed, the longer the white line.

**Horizontal Obstacle Sensing Information**

The light areas are the obstacle sensing areas of the aircraft, while the dark areas are the blind spots. During flight, keep the aircraft speed vector line out of the obstacle-sensing blind spots.



- If an obstacle is detected, it will be indicated by a green frame when it is outside the warning distance. When the obstacle reaches the warning distance, the frame turns orange. When the obstacle approaches the obstacle braking distance, the frame turns red.
- When the obstacle sensing is disabled, OFF will be displayed. When obstacle sensing is enabled, the vision system is not working but infrared sensing system is available, TOF will be displayed. When the obstacle sensing is enabled, but

the vision system and the infrared sensing system are not available, NA will be displayed.

11. Wind Speed and Direction

The wind direction is relative to the aircraft.

12. Aircraft Horizontal Speed

13. Gimbal Tilt

14. Aircraft Vertical Speed

15. Relative Altitude (ALT)

Displays the altitude of the aircraft relative to the takeoff point.

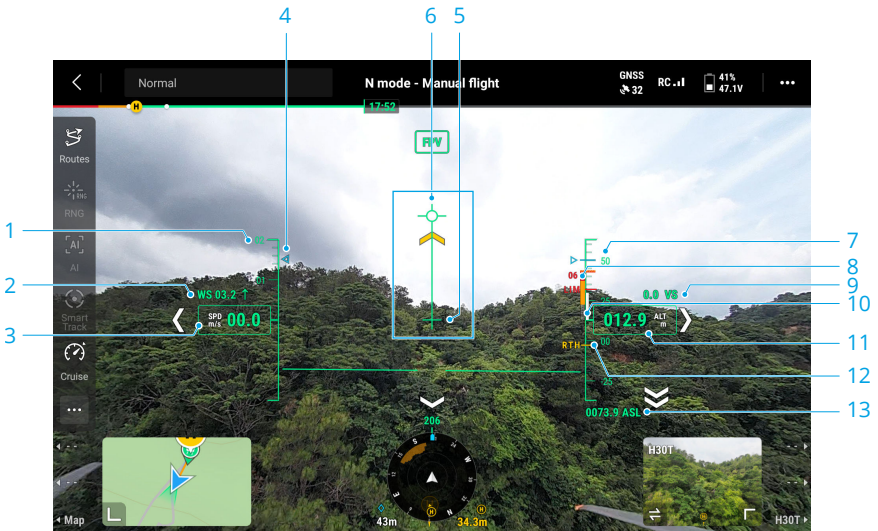
16. Altitude (ASL)

17. Relay Aircraft Information

Displays the altitude and distance of the relay aircraft relative to the operating aircraft.

## Primary Flight Display

Primary Flight Display (PFD) makes flying easier and more intuitive, enabling users to see and avoid obstacles around the aircraft, as well as stop and adjust the flight trajectory if necessary.



1. **Speed Wheel**

2. **Wind Speed and Direction**

The wind direction is relative to the aircraft.

3. **Aircraft Horizontal Speed**

4. Preset speed of the flight route during the flight task.

5. **Aircraft Heading Indicator**

6. **Flight Path Vector**

The position the aircraft is about to reach.

7. Preset height of the flight route during the flight task.

8. **Vertical Obstacle Indicator**

When there is an obstacle above or below the aircraft, you can refer to the obstacle sensing display or compare the speed bar with the obstacle height to determine if a collision is imminent and avoid accidents.

9. **Altitude Limit (LIM)**

10. **Aircraft Vertical Speed**

The white line shows the position of the aircraft in three seconds. The higher the vertical speed, the longer the white line.

11. **Relative Altitude (ALT)**

The altitude of the aircraft relative to the takeoff point.

12. **Return-to-Home Altitude (RTH)**

13. **Altitude (ASL)**

## AR Projection

The DJI Pilot 2app supports AR projection, including:

1. **Home Point**

When the Home Point is beyond the current view, it will be displayed on the edge of the view. The aircraft can be turned towards the Home Point by following the arrow.

2. **PinPoints**

A PinPoint appears bigger when near the aircraft and smaller when it is far. This allows users to judge the distance between the PinPoint and the aircraft from the size of the PinPoint. When a PinPoint selected is beyond the current view, it will be displayed on the edge of the view. The aircraft can be turned towards the PinPoint by following the arrow.

3. **Waypoints**

In a flight task, the two waypoints the aircraft is about to reach will be projected on FPV camera view or gimbal camera view. The next waypoint to be reached will appear as a solid triangle and a serial number, while the subsequent waypoint will appear as a dotted triangle and a serial number.

#### 4. ADS-B Manned Airplane

When a manned airplane is detected nearby, it will be projected on the camera view. Ascend or descend the aircraft as soon as possible to avoid the manned airplane by following the prompted instructions.

Additionally, it supports AR street and power line highlighting, return to home, and obstacle bypassing path prompts, etc.

## Laser Ranging



1. Tap to enable the RNG.
2. The cross hair in the center of the lens will turn red, which means the laser rangefinder is aiming at the target and measuring the altitude of the target and distance between the target and the aircraft. The latitude and the longitude of the target can be obtained after a PinPoint is created on the target.
3. The linear distance between the target and the aircraft.
4. The altitude of the target.
5. The latitude and longitude of the target.
6. The horizontal distance between the target and the aircraft.



- RNG positioning is limited by factors such as the GNSS positioning accuracy and gimbal attitude accuracy. The GNSS position, horizontal distance, navigation display, and AR projection are provided for reference only.
  - The shape of the cross hairs varies with different camera lenses.
-

## 7 Flight Operations

### 7.1 Annotation Management and Synchronization

#### PinPoint

PinPoint can be used to set the location point of a subject in gimbal camera view or map view, for quick observation and information synchronization.



#### 1. Create a PinPoint

Adjust the attitude of the aircraft and the gimbal to move the subject to the center of the current view. Press the L3 button of the remote controller to pin the subject at the center. The PinPoint can record the latitude, longitude and altitude of the subject.

2. AR projection will be created for the subject in gimbal camera view or FPV camera view. It will be big when near, small when far.

#### 3. Selected PinPoint

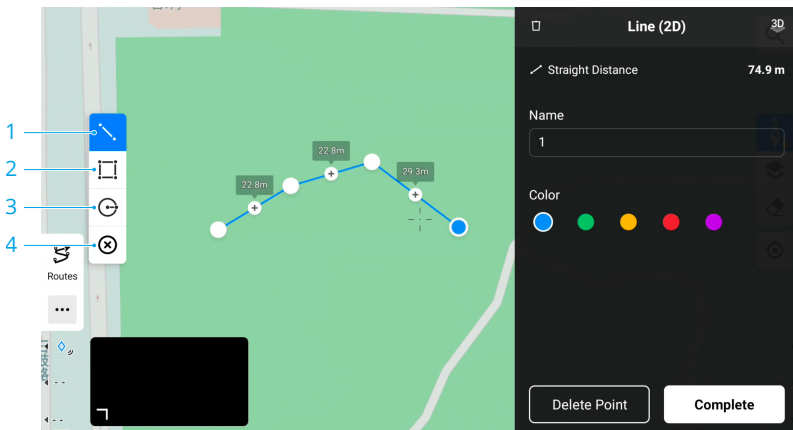
- A small frame will appear around the PinPoint, indicating it is selected.
- The lower left corner of the Navigation Display shows the horizontal distance from the PinPoint to the aircraft and the name of the PinPoint. The orientation of the PinPoint relative to the aircraft is also shown within Navigation Display.

- If the selected PinPoint is outside the video transmission view, the PinPoint icon will stay on the edge of the screen, indicating its orientation relative to the center of the view.
  - After selecting a PinPoint, the user can edit the PinPoint or drag the PinPoint on the map.
4. Tap **⋮** > **📍** to set the remote controller's custom buttons to the PinPoint related functions. Users can quickly create and select PinPoints by using the buttons.
  5. **Switch to Map View**  
In map view, you can add a PinPoint by dragging the point to the crosshairs in the center of the map. The altitude is the current flight altitude of the aircraft.

- 
- 💡 • PinPoint positioning is limited by factors such as the GNSS positioning accuracy and gimbal attitude accuracy. The latitude and longitude, horizontal distance, Navigation Display, and AR projection are provide for reference only.
- 

## Line and Area Annotation Management

Users can draw lines and areas on the map to synchronize key information about roads and land.



1. Tap to display the Edit Line view.
2. Tap to display the Edit Area view.
3. Tap to display the Edit Circle view.
4. Clear all annotations.

## Annotation Sharing

The location of the target point identified by PinPoint can be synchronized with the camera view, Navigation Display, map view, and DJI FlightHub 2. It can be displayed on both camera and map views.

When connected to DJI FlightHub 2, the point, line and area annotations of DJI Pilot 2 app and DJI FlightHub 2 can be synchronized with each other. Locations and annotations can be viewed on the remote controller and other devices logged into DJI FlightHub 2 for real-time sharing.

## 7.2 Intelligent Functions

The aircraft supports various intelligent functions such as:

- Smart Detection
- Smart Track
- Cruise
- Terrain Follow
- Power Line Follow
- Working as an aerial relay
- Boat Launch



Click the link or scan the QR code to watch the tutorial video.




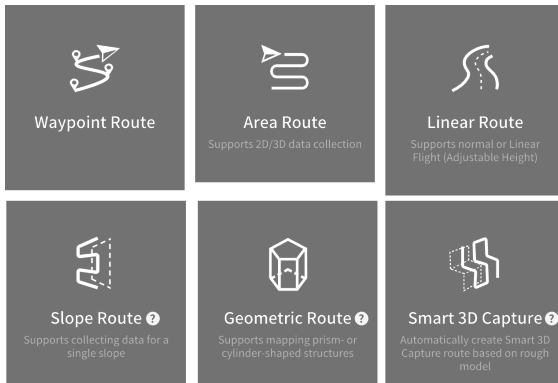
<https://enterprise.dji.com/matrice-400/video>



- To use the Boat Launch feature, make sure to download the Matrice 400 Boat Launch marker file from the official website <https://enterprise.dji.com/matrice-400/downloads> and strictly follow the usage requirements. Otherwise, it may cause damage.

## 7.3 Flight Tasks

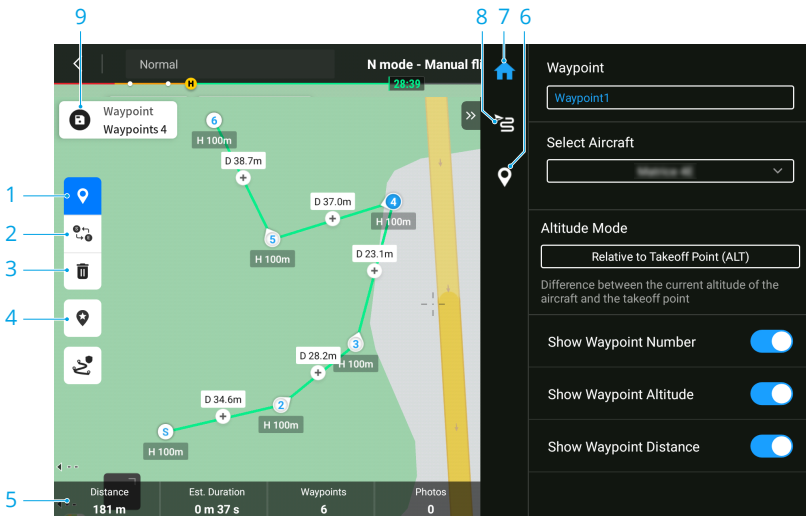
Tap **Flight Route** on the homepage of DJI Pilot 2 to enter the flight route library, or tap the flight route icon  in the camera view or in the map view to enter the flight route library. Users can view flight tasks or create a flight task.



### Waypoint Route

Waypoint Route can be planned in two ways: Set Waypoints or Live Mission Recording. Use Set Waypoints to create a route by adding and editing waypoints on the map. Use Live Mission Recording to create a route by adding waypoints when taking photos along the route.

## Set Waypoints



### 1. Enable/Disable Editing Waypoint on Map

### 2. Reverse Path

Tap to swap the start and end points to reverse the flight path. S refers to the start point.

### 3. Delete Selected Waypoint

### 4. Point of Interest (POI)

Tap to enable the POI function, and a POI will be displayed on the map. Drag to adjust its position. After a POI is added, the aircraft yaw can be set as facing the POI, so that the aircraft nose points at the POI during the task. Tap this icon again to disable the POI function.

### 5. Flight Route Information

### 6. Individual Waypoint Settings

### 7. Parameters List

### 8. Flight Route Settings

These parameters will take effect for all waypoints in the route.

### 9. Save

Tap to save the flight route. After the flight route is saved, the icon becomes the perform task button, tap the button and then check the settings and status of the aircraft in the pop-up checklist. Tap to upload the flight route. Once the upload is complete, tap the Start button to perform the current task.

## Live Mission Recording

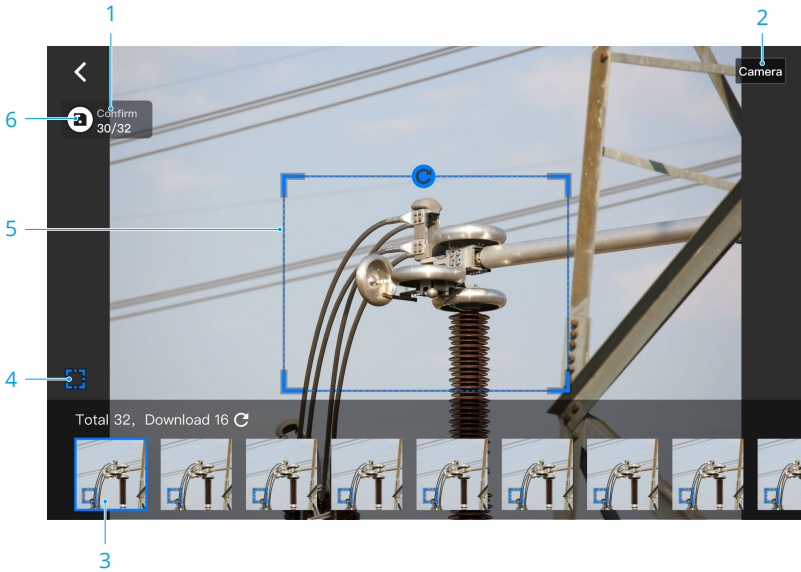


1. Control the gimbal, adjust the zoom scale, and aim at the subject. Tap to capture photos or press the C1 button of the remote controller to add a waypoint. The number of waypoints and photos will be added accordingly.
2. The number of planned waypoints.
3. The number of planned photos.
4. Tap to switch to map view for editing or viewing.


### AI Spot-Check

Live mission recording supports AI Spot-Check. By selecting the target object in photos of the flight route, the aircraft will accurately take photo for the same object during its next flight.

When recording the flight route, it is recommended to place the target into the target selection box. When editing the flight route, select **Drag-Select Target** to enter the AI Spot-Check editing page.



1. Current photo number and total number of photos.
2. The device used to take the photo.
3. Photo thumbnail. Tap to perform AI Spot-Check editing for this photo. Photos requiring AI Spot-Check will have a frame mark.
4. Enable/disable AI Spot-Check for the current photo.
5. Target selection box. You can adjust the box size, drag or rotate the box.
6. Save the flight route.

- 
-  • AI Spot-Check can only be used with a zoom camera and requires taking photos within 10x zoom range.
- AI Spot-Check should be used when RTK is enabled, and the RTK base station coordinates for taking photos and re-flight must remain consistent.
- 

## Area Route

Area route has Ortho Collection and Oblique Collection, the aircraft can automatically complete the data collection for the aerial photogrammetry of the planned area along the s-shaped route according to the route parameters.

Oblique collection generates five s-shaped routes in the mapping area, respectively controlling the gimbal to collect orthophoto and oblique photos in 5 different directions, which can be used to make real 3D models.

Smart Oblique and Terrain Follow can be enabled in the area route.

### Smart Oblique

Smart Oblique is an innovative oblique photography solution. By automatically controlling the gimbal to capture images from multiple angles, it greatly improves operational efficiency.

- During Ortho Collection, with Smart Oblique enabled, the gimbal supports simultaneous lateral capturing, reducing the flight route density and increasing data collection efficiency.
- During Oblique Collection, with Smart Oblique enabled, the gimbal can capture images in five directions simultaneously. The aircraft only needs to fly one flight route to collect the orthophoto and oblique photos required for 3D reconstruction.

### Terrain follow

When collecting data in areas with large elevation differences, such as mountainous areas, Terrain Follow allows the aircraft to adjust the flight altitude following the changes in the terrain. Terrain Follow ensures that the relative height of the aircraft and the ground below remains unchanged so that the Ground Sampling Distance (GSD) of the photos collected in each area is consistent, improving the accuracy of mapping data while ensuring flight safety.

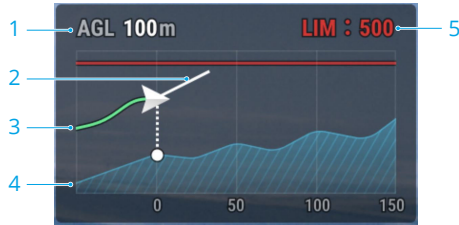


- Select AGL for the Altitude Mode to enable Terrain Follow.
- 

### Real-Time Follow

Real-Time Follow does not require DSM files. The aircraft vision system detects the terrain fluctuations ahead in real time during the flight. It is recommended to use this function in areas where the terrain slope is less than 75° and the lighting condition and environment are suitable for the vision system.

When performing a mapping task while Real-Time Follow is enabled, the aircraft altitude above ground level (AGL) and the terrain trend ahead of the aircraft will be displayed in the camera view.



1. Altitude above Ground Level (AGL)
2. Aircraft Velocity Direction
3. Flight Path
4. Terrain Trend Line
5. Max Altitude

- ⚠ • When flying beyond the long-distance detection range of the vision system, Real-Time Follow cannot be performed. Fly with caution. Real-Time Follow cannot work in locations that feature cliffs, steep slopes, power lines, and towers.
- The vision system cannot work properly in low-light environments. Real-Time Follow cannot be used normally in rainy, snowy, and foggy environments.
  - The vision system may not work properly over water. Therefore, the aircraft may not be able to actively detect the distance to the water for real-time follow. It is not recommended to use real-time follow in large areas of water and ocean waves.
  - The vision system cannot work properly near surfaces without clear pattern variations or where the light is too bright or too dark. The vision system cannot work properly in the following situations:
    - ♦ Flying near monochrome surfaces (e.g., pure black, white, red, or green surfaces).
    - ♦ Flying near highly reflective surfaces.
    - ♦ Flying near water or transparent surfaces.
    - ♦ Flying near moving surfaces or objects.
    - ♦ Flying in an area with frequent and drastic lighting changes.
    - ♦ Flying near extremely dark (<10 lux) or bright (>40,000 lux) surfaces.
    - ♦ Flying near surfaces that strongly reflect or absorb infrared waves (e.g., mirrors).

- Flying near surfaces without clear patterns or textures.
  - Flying near surfaces with repeating identical patterns or textures (e.g., tiles with the same design).
  - Flying near obstacles with small surface areas (e.g., tree branches and power lines).
  - Keep the sensors clean at all times. DO NOT tamper with the sensors. DO NOT use the aircraft in dusty or humid environments.
- 

### DSM Follow

By importing the DSM file, the app will generate a flight route with altitude changes. The DSM files of the mapping area can be obtained using the following two methods:

#### Import Local File

- Collect the 2D data of the mapping area and perform a 2D reconstruction using DJI Terra by selecting Fruit Tree mode. A .tif file will be generated and can be imported to the microSD card of the remote controller.
- Download the terrain mapping data from a geobrowser.

#### Download from Internet

DSM files can be directly obtained by downloading the open source data of the ASTER GDEM V3 geoid database.



- Make sure the DSM file is a geographic coordinate system file, not a projected coordinate system file. Otherwise, the imported file may not be recognized. It is recommended that the resolution of the imported file should be no more than 10 meters.
- Make sure that the mapping area is within the range of the DSM file.



- The open-source geoid database may have errors. DJI is not responsible for the accuracy, authenticity, or validity of the data. Pay attention to the flight environment and fly with caution.
- 

## Linear Route

Linear Route is used to collect orthophotos for strip-shaped areas such as rivers and pipelines. The mapping area can be generated by selecting the center line of the strip and extending outward along this line.

## Set Waypoints

First, set Flight Band by selecting points on the map to generate the band-shaped mapping area, and confirm the center line and the scope of the mapping area. Switch to Flight Route to generate the corresponding s-shaped route, and adjust the route parameters to complete the setting.

Center line can be generated by tapping on the map or importing a linear KML file. Note: After the band-shaped area is generated, check along the path to see if there is a large deviation from the original mapping area. If there is a deviation, increase some points to cover the area completely or increase the length of the left and right extensions to cover the mapping area completely.

Terrain Follow can also be enabled in the Linear Route. Both Real-Time Follow and DSM Follow are available. Refer to [Terrain follow](#) section in Area Route for more information.

## Live Mission Recording

Live Mission Recording is used to plan the route by adding waypoints as the center line of the flight area when the aircraft is close to the subject. Live Mission Recording for linear route supports an adjustable altitude during flight, which is suitable for scenarios such as channel inspection.



- To ensure flight safety, RTK needs to be connected when recording live mission and collecting aerial photogrammetry data.
- 

## Slope Route

Slope Route is used to collect photogrammetry data for a single elevation or slope, which is mainly used for modeling and inspection of building facades and slopes. By planning the spatial flight route and verifying the route safety with AR projection, users can collect modeling data.

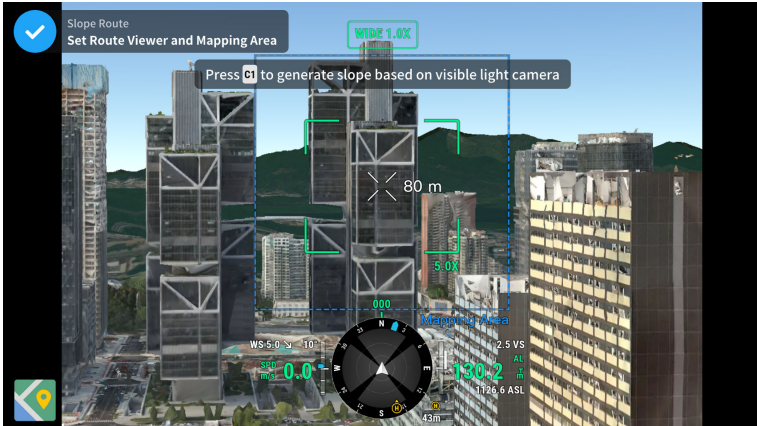
## Create Slope

1. Adjust the aircraft and the camera to face the slope. Ensure the camera view is parallel to the slope.
2. When the distance between the aircraft and the slope appears on the screen, press the C1 button on the remote controller to obtain the AR Slope and Route View.





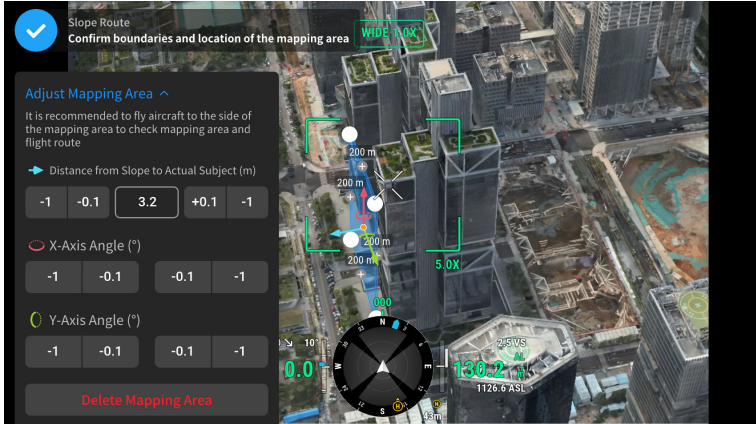
- If the distance to the slope cannot be identified, move the aircraft left or right under safe circumstances to obtain additional spatial information.

- Make sure RTK is connected during the entire process of planning and performing Slope Route. Otherwise, the function cannot be used.
- Route Viewer is generated once slope is created and can be updated during the route planning process. Adjusting boundaries of the mapping area is available in Route Viewer.



## Adjust and Confirm AR Slope

1. To adjust the distance and angle between AR slope and actual slope to be mapped, fly the aircraft to the side of the AR slope. It is recommended that the AR slope fits the actual slope for more accurate GSD calculation.
  - Adjust the boundary points of the slope and add additional boundary points to modify the shape of the slope.
  - Click Slide/Rotate Mapping Area to open the parameter settings panel for the mapping area. Users can adjust the mapping area angle and move the mapping area forward and backward.
  - If the angle and position of the Route Viewer is inappropriate, click  in the lower right corner of the Route Viewer to reset.
2. When the AR slope matches the actual slope sufficiently, click  to confirm the mapping area and generate a route.



## Adjust Flight Route Parameters


After the flight route is generated, tap on the Route Viewer to adjust the route parameters. Refer to the [Collecting Aerial Photogrammetry Data](#) section for more information about route parameters.

Tap Adjust Mapping Area to readjust the mapping area, if necessary.

## Geometric Route

Geometric Route is used to collect photogrammetry data for multiple spatial surfaces, which is mainly used for modeling and inspection of building facades.

### Set the Bottom Base Shape

1. Select the shape type of the geometry base on the left side of the map view.
2. Tap on the map to draw the base shape of the geometry.
3. Tap  to confirm the bottom base of the mapping area.



- It is recommended to fly the aircraft to the target building and mark its boundary points. Then, enter the map view to draw the boundary points of





## Adjust Flight Route Parameters

After the flight route is generated, tap on the Route Viewer to adjust the route parameters. Refer to the [Collecting Aerial Photogrammetry Data](#) section for more information about route parameters.

Tap Adjust Mapping Area to readjust the mapping area, if necessary.

## Smart 3D Capture

Smart 3D Capture uses a rough model of the subject to generate three-dimensional flight routes for precise photography. This allows for close-range data collection near the surface of the subject. It is mainly used for modeling and inspecting complex building facades, detailed ancient architecture, and geological disaster scenarios.



Click the link below or scan the QR code to watch the tutorial video before first time use.







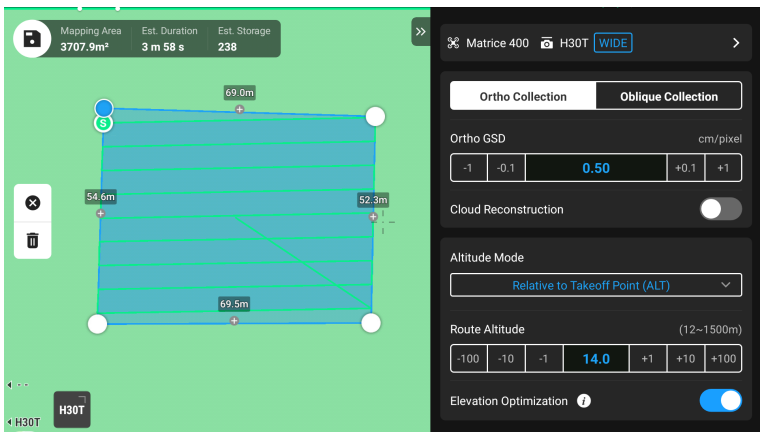
<https://enterprise.dji.com/matrice-400/video>



## Collecting Aerial Photogrammetry Data

The following takes the Ortho Collection in the Area Route as an example for specific operation instructions.

- ⚠ • Before collecting aerial photogrammetry data, enter the aircraft settings to enable RTK, and ensure that RTK is connected and in FIX state.

1. On the homepage of DJI Pilot 2, tap **Flight Route** > **Create a Route** >  to create an Area Route. Tap on the map view, and drag the boundary point to adjust the range of the mapping area. Tap  in the middle of the boundary point to add a boundary point, and adjust the longitude and latitude of the point in the parameter settings on the right. Tap  to delete the current selected boundary point, and tap  to delete all boundary points.





2. Select the aircraft model, the camera model, and the lens, then set the following flight route parameters in sequence:
  - a. Set the task name and select Ortho Collection.
  - b. Set the altitude mode (ASL/ALT), flight route altitude, flight route speed, course angle, actions upon completion, etc., and enable elevation optimization.
  - c. In Advanced Settings, set the side overlap ratio, frontal overlap ratio, margin, photo mode, and customize camera angle.
3. Tap  to save the task and tap  to upload and execute the flight task.
4. Power off the aircraft after the task is completed. Remove the microSD card from the aircraft, and connect it to the computer to check the taken photos and the generated files.

- When using Area Route and Linear Route, the default camera focus mode is MF infinity, and the distortion correction is disabled.
- During an orthophoto operation, it is recommended to adjust the flight route speed to the maximum value and enable elevation optimization.

## Route Parameters

Specifications	Description
Ortho GSD	Ortho GSD is the ground sampling distance of the orthophotos taken on the first route, i.e., the distance between two consecutive pixel centers measured on the ground. The larger the Ortho GSD value, the lower the resolution of the orthophotos. The flight route altitude will be changed accordingly when changing the Ortho GSD value.
Altitude Mode	<p>The starting plane of the flight route altitude.</p> <ul style="list-style-type: none"> <li>• Relative to Takeoff Point (ALT): the altitude of the aircraft relative to the takeoff point. It is recommended to use this option for aerial mapping operations. Then, Target Surface to Takeoff Point will appear. Target Surface to Takeoff Point = the altitude of the target surface - the altitude of the take-off point.</li> <li>• ASL (EGM96): the altitude of the aircraft relative to the EGM96 geoid. Flight Route to Target Surface will appear. Flight Route to Target Surface = the altitude of the flight route - the altitude of the target surface.</li> <li>• AGL: Altitude above Ground Level, which is the altitude of the aircraft relative to the ground below. Terrain Follow Altitude will appear.</li> </ul>
Flight Route Altitude	The altitude of the flight route in a flight task. Different altitude modes have different starting planes for the flight route altitude. The Ortho GSD value will be changed accordingly when changing the flight route altitude.
Safe Takeoff Altitude	<p>After taking off, the aircraft will fly up to the safe takeoff altitude (relative to the takeoff point), then fly to the start point of the flight route.</p> <ul style="list-style-type: none"> <li>• Safe Takeoff Altitude is effective only when the aircraft executes a flight task before takeoff. If the aircraft starts to execute a flight task after takeoff, the safe takeoff altitude will not take effect.</li> </ul>

Specifications	Description
Speed	The operating speed of the aircraft after entering the flight route. This speed is related to the frontal overlap ratio.
Course Angle	The route angle can be adjusted, and the starting and ending positions of the route will be adjusted accordingly. Note: the estimated time of the task varies for different course angles. By adjusting the course angle, the task with the shortest estimated time can be planned to improve the operation efficiency.
Elevation Optimization	<p>When enabled, the aircraft will fly to the center of the mapping area to collect a set of oblique images to optimize the elevation accuracy. It is recommended to enable this option for orthophoto operation, which requires high elevation accuracy.</p> <p> This feature is not supported for Oblique Collection.</p>
Upon Completion	The action performed by the aircraft after completing the operation. The default selection is Return to Home.
Side Overlap Ratio/Frontal Overlap Ratio	<p>Side overlap ratio is the overlap ratio of two pictures taken on two parallel paths. Frontal overlap ratio is the overlap ratio of two pictures captured consecutively in the same heading along the flight path. The overlap ratio is one of the key factors affecting the success of later model reconstruction. The default side overlap ratio is 70%, and the default frontal overlap ratio is 80%, which is suitable for most scenarios. If the mapping area is flat and has no undulations, the overlap ratio can be appropriately reduced to improve operational efficiency. If the mapping area has large fluctuations, it is recommended to increase the overlap ratio to ensure the reconstruction effect.</p> <p> When using Oblique Collection, two more settings will be available: Side Overlap Ratio (Oblique) and Frontal Overlap Ratio (Oblique). The overlap ratio of oblique photos can be lower than that of orthophotos.</p>

Specifications	Description
Margin	<p>The distance of the flight area beyond the mapping area. The purpose of setting the margin is to ensure the edge accuracy of the mapping area by capturing images outside the mapping area.</p> <p>☀️ Smart Oblique does not support setting margin, it will automatically expand the margin according to the range of the mapping area and the gimbal pitch.</p>
Photo Mode	The camera's photo mode. The default selection is Timed Interval Shot.
Custom Camera Angle	Once enabled, users can customize the aircraft yaw angle and the gimbal pitch angle. Only the Ortho Collection in the Area Route supports customizing the camera angle.
Route Start Point	The starting point of the route can be customized in the optional points of the map view.
Takeoff Speed	After the aircraft takes off and reaches the flight route altitude, the flight speed before entering the flight route. This speed is not the vertical take-off speed of the aircraft. It is recommended to set it to the maximum to improve operational efficiency.

Other flight routes or functions also support the following specifications:

Specifications	Description
Gimbal Pitch (Oblique)	<p>Adjusts the camera pitch angle when capturing oblique photos. The default angle is <math>-45^{\circ}</math>. When the altitude difference of the buildings in the mapping area increases, it is recommended to increase the angle to capture more images of the upper floors of the buildings. When the buildings in the mapping area are dense, it is recommended to appropriately reduce the angle to capture more images between buildings.</p> <p>☀️ When capturing images with Smart Oblique, the option is Gimbal Angle, and the default angle is <math>45^{\circ}</math>.</p>

Specifications	Description
Oblique GSD	Oblique GSD is the ground sampling distance of the oblique photos captured by the remaining four routes, i.e., the distance between two consecutive pixel centers measured on the ground. The larger the Oblique GSD value, the lower the resolution of the oblique photos. The Oblique GSD value will be changed accordingly when changing the flight route altitude.
Single Route	If the Single Route is enabled, a route in the center of the mapping area will be generated. This function is suitable for scenes where only the center of the mapping area needs to be photographed, such as an oil pipeline inspection.
Extension Length	Plan the range of the flight band by adjusting the distance that the route expands from the center to the left and right sides. After enabling Equal Left/Right Extensions, the range of the flight band remains symmetrical compared to the center of the route.
Flight Band Cutting Distance	Adjusting the cutting distance of the flight band can divide the band area into several small areas for operation. The communication range of the aircraft should be mainly considered for the division range, ensuring that the aircraft will not lose control in a small area.
Include Center Line	If enabled, flight routes are generated outwards along the center line. This route will ensure that the center line of the band-shaped mapping area is included.
Boundary Optimization	Add new flight routes outside the current planning flight area to take more photos of the edge of the mapping area. Turn on for objects that mainly capture edge areas, such as river channels.
Flight Route Direction	The slope route can be executed vertically or horizontally. It is recommended to select the orientation based on the surrounding environment of the target.
Rotation Angle	Rotation angle of flight routes relative to geometric structure. Adjust Route Coverage Rate and Rotation Angle to realize mapping for specific face.
Route Coverage Rate	Coverage rate of flight routes on lateral faces of geometric structure. Adjust Route Coverage Rate and Rotation Angle to realize mapping for specific face.

## Data Storage

### Photo File

Refer to this list to check the descriptions for the photo file field.

Field	Field Description
ModifyDate	Time photo was modified
CreateDate	Time photo was created
Make	Manufacturer
Model	Product model
Format	Photo format
Version	XMP version
ImageSource	Camera type
GpsStatus	GPS status
AltitudeType	Elevation type
GpsLatitude	GPS latitude when photo was taken
GpsLongitude	GPS longitude when photo was taken
AbsoluteAltitude	Absolute altitude (geodetic altitude) when photo was taken
RelativeAltitude	Relative altitude (relative to the altitude of takeoff point) when photo was taken
GimbalRollDegree	Gimbal roll angle when photo was taken (NED coordinate system, the rotation order is ZYX)
GimbalYawDegree	Gimbal yaw angle when photo was taken (NED coordinate system, the rotation order is ZYX)
GimbalPitchDegree	Gimbal pitch angle when photo was taken (NED coordinate system, the rotation order is ZYX)
FlightRollDegree	Aircraft roll angle when photo was taken (NED coordinate system, the rotation order is ZYX)
FlightYawDegree	Aircraft yaw angle when photo was taken (NED coordinate system, the rotation order is ZYX)
FlightPitchDegree	Aircraft pitch angle when photo was taken (NED coordinate system, the rotation order is ZYX)
FlightXSpeed	Flight speed in the north direction when photo was taken
FlightYSpeed	Flight speed in the east direction when photo was taken
FlightZSpeed	Flight speed in the elevation direction when photo was taken

Field	Field Description
CamReverse	Whether the camera is upside down or not
GimbalReverse	Whether the gimbal is upside down or not
SelfData	Customized data
RtkFlag	RTK status: 0 - Failed to position 16 - Single point positioning (meter-level accuracy) 32-49 - Floating point solution positioning (decimeter-level to meter-level accuracy) 50 - Fixed solution positioning (centimeter-level accuracy)
RtkStdLon	RTK positioning standard longitude deviation
RtkStdLat	RTK positioning standard latitude deviation
RtkStdHgt	RTK positioning standard elevation deviation
RtkDiffAge	RTK difference age (correction age)
NTRIPMountPoint	Mount point of Network RTK
NTRIPPort	Port of Network RTK
NTRIPHost	IP address or domain name of Network RTK
SurveyingMode	Whether the photo is suitable for mapping operation or not: 0 - Not recommended, as the accuracy cannot be guaranteed 1 - Recommended as the accuracy can be guaranteed
DewarpFlag	Whether the camera parameters have been dewarped or not: 0 - Not dewarped 1 - Dewarped
DewarpData	Camera parameters for dewarping (the calibration file must be imported and calibrated in DJI Terra for the data to be generated): Parameter sequence - fx, fy, cx, cy, k1, k2, p1, p2, k3 fx, fy - Calibrated focal length (unit: pixel) cx, cy - Calibrated optical center position (unit: pixel, origin point: photo center) k1, k2, p1, p2, k3 - Radial and tangential distortion parameters

Field	Field Description
CalibratedFocalLength	Designed focal length of lens, unit: pixels
CalibratedOpticalCenterX	X coordinate of the designed optical center position, unit: pixels
CalibratedOpticalCenterY	Y coordinate of the designed optical center position, unit: pixels
UTCAtExposure	UTC when the camera is exposed.
ShutterType	Shutter type
ShutterCount	Shutter count used
CameraSerialNumber	Camera SN
LensSerialNumber	Lens serial number
DroneModel	Aircraft model
DroneSerialNumber	Aircraft serial number
ProductName	Product name
SensorTemperature	Sensor temperature
SensorFPS	Sensor FPS
WhiteBalanceCCT	White balance correlated color temperature
LensPosition	Lens position
LensInfinitePosition	Lens infinite position
LensTemperature	Lens temperature
DewarpDataK6	<p>Camera parameters for dewarping:</p> <p>Parameter sequence - fx, fy, cx, cy, k1, k2, p1, p2, k3, k4, k5, k6</p> <p>fx, fy - Calibrated focal length (unit: pixel)</p> <p>cx, cy - Calibrated optical center position (unit: pixel, origin point: photo center)</p> <p>k1, k2, p1, p2, k3, k4, k5, k6 - Radial and tangential distortion parameters</p>
LRFTargetDistance	Straight-line distance to Laser Rangefinder target point
LRFTargetLon	Longitude of Laser Rangefinder target point
LRFTargetLat	Latitude of Laser Rangefinder target point
LRFTargetAlt	Relative altitude of Laser Rangefinder target point above takeoff point
LRFTargetAbsAlt	Absolute altitude (ellipsoidal altitude) of Laser Rangefinder target point



## 8 Appendix

### 8.1 Specifications

Visit the following website for specifications.

<https://enterprise.dji.com/matrice-400/specs>

### 8.2 Firmware Update

#### Using DJI Pilot 2

##### Aircraft and Remote Controller Firmware Update

1. Power on the aircraft and remote controller. Ensure the aircraft is linked to the remote controller, and the remote controller is connected to the internet.
2. Run DJI Pilot 2. A prompt will appear on the homepage if new firmware is available. Tap to enter the Firmware Update view.
3. Tap **Update All**, and DJI Pilot 2 will download the firmware and update the aircraft and remote controller.
4. The aircraft and remote controller will automatically restart after the firmware update is complete.

##### Battery Station and Batteries Firmware Update

Use the DJI Pilot 2 app to update the firmware of the battery station as well as the intelligent flight batteries at the same time.

1. Insert the intelligent flight battery into the battery port and power on the battery station.
2. Connect the battery station USB-C charging port to the remote controller USB-C port using a USB-C cable.
3. Power on the remote controller and make sure it is connected to the internet.
4. Run the DJI Pilot 2 app. A prompt will appear on the homepage if the battery station firmware needs to be updated. Tap to enter the battery station update page.
5. Tap **Update All** to begin the update, which takes approximately 10 minutes. The update is completed when the update success prompt appears.



- During a firmware update, DO NOT insert or remove the batteries to avoid battery update failure.

- During a firmware update, DO NOT unplug the USB-C cable to avoid firmware update failure.
- 

## Offline Firmware Update

An offline firmware package can be downloaded from the DJI official website to an external storage device such as a microSD card or U disk. Run DJI Pilot 2, tap HMS, and then **Firmware Update > Offline Update** to select the firmware package of the remote controller, aircraft, or payload from the external storage device and tap **Update All** to update.

## Using DJI Assistant 2 (Enterprise Series)

### Aircraft and Remote Controller Firmware Update

1. Connect the aircraft or remote controller to a computer separately, as the DJI Assistant 2 does not support updating multiple DJI devices at the same time.
2. Make sure the computer is connected to the internet and the DJI device is powered on.
3. Launch DJI Assistant 2 and log in with a DJI account.
4. Tap the **firmware update** on the left side of the main interface.
5. Select the firmware version and click to update. The firmware will be downloaded and updated automatically.
6. When the "Update successful" prompt appears, the update is completed, and the DJI device will restart automatically.

## Notices

---



- Make sure the aircraft and remote controller are fully charged before updating the firmware.
- DO NOT remove accessories or turn off the devices during the update process.
- The battery firmware is included in the aircraft firmware. Be sure to update all batteries.
- During the update process, it is normal for the gimbal to go limp, the aircraft status indicators to blink, and the aircraft to reboot. Wait patiently for the update to complete.
- Make sure to keep the aircraft away from people and animals during a firmware update, system calibration, or parameter configuration.

- For safety, make sure you are using the latest firmware version.
- After the firmware update is completed, the remote controller and the aircraft may become disconnected. Reconnect the devices if necessary.

Visit the following link and refer to the *Release Notes* for firmware update information:

<https://enterprise.dji.com/matrice-400/downloads>

## 8.3 Flight Data

Flight data is automatically recorded to the internal storage of the aircraft. You can connect the aircraft to a computer via the USB port and export this data via DJI Assistant 2 or DJI Pilot 2 app.

## 8.4 Using Enhanced Transmission

Enhanced Transmission integrates OcuSync video transmission technology with 4G networks. If the OcuSync video transmission is obstructed, experiencing interference, or used over long distances, 4G connectivity allows you to maintain aircraft control.

Installation requirements:

- The aircraft must be equipped with a DJI Cellular Dongle 2. The aircraft supports the installation of two DJI Cellular Dongles 2 and supports dual nano-SIM cards.
- The remote controller can be equipped with a DJI Cellular Dongle 2 or can be connected to a Wi-Fi hotspot to use Enhanced Transmission.

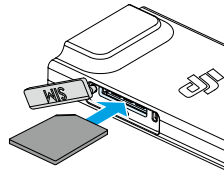
Enhanced Transmission will consume data. If the transmission completely switches to a 4G network, a 30-minute flight consumes about 1 GB of data on the aircraft and the remote controller, respectively. This value is for reference only. Refer to the actual data usage.



- Enhanced Transmission is only supported in some countries and regions.
- The DJI Cellular Dongle 2 and its related service are only available in some countries and regions. Comply with local laws and regulations and DJI Cellular Dongle 2 Terms of Service.

## Inserting the nano-SIM Card

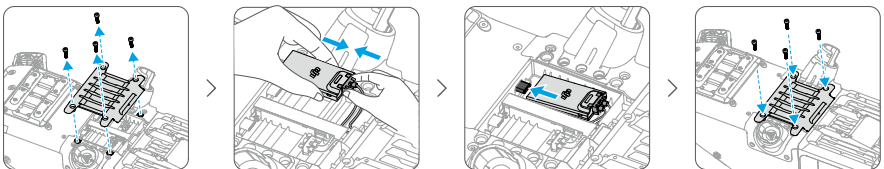
Open the SIM card slot cover on the dongle, insert the nano-SIM card into the slot in the same direction as shown in the figure, and close the cover.



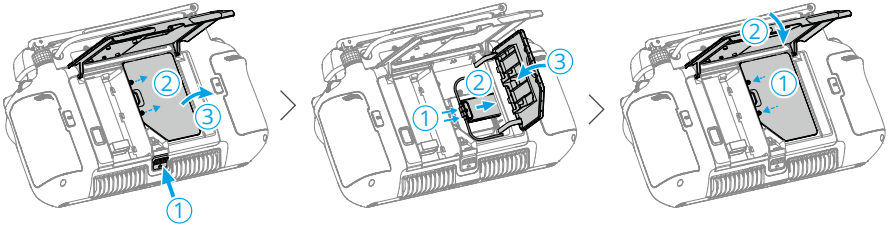
- ⚠ • It is strongly recommended to purchase a nano-SIM card which supports a 4G network from official channels of the local mobile network operator.
  - DO NOT use an IoT SIM card, otherwise the video transmission quality will be seriously compromised.
  - DO NOT use a SIM card provided by the virtual mobile network operator, otherwise it may lead to an inability to connect to the Internet .
  - DO NOT cut the SIM card by yourself, otherwise the SIM card may be damaged, or the rough edges and corners may cause the SIM card to be unable to be inserted or removed properly.
  - If the SIM card is set with a password (PIN code), make sure to insert the SIM card into the smartphone and cancel the PIN code setting, otherwise it will fail to connect to the Internet.
- 
- 💡 • Open the cover and push the nano-SIM card to partially eject it.
- 

## Installing the DJI Cellular Dongle 2

1. Install the DJI Cellular Dongle 2 on to the aircraft.

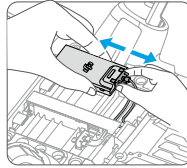


2. Install the DJI Cellular Dongle 2 to the remote controller.



3. Check the icon in the upper right corner of the system desktop. If the 4G logo appears, it means that the enhanced transmission is available.

- ⚠ • Gently remove the DJI Cellular Dongle 2 from the aircraft as shown if needed. DO NOT pull the antennas by force. Otherwise, the antennas may be damaged.



## Using Enhanced Transmission

After the aircraft and the remote controller are connected by a 4G network, Enhanced Transmission can be enabled in the app.

- Go to the camera view, then tap the video transmission signal icon to enable or disable Enhanced Transmission in the pop-up box.
- Go to the camera view, tap \*\*\* > HD, and enable or disable Enhanced Transmission.

- ⚠ • Pay close attention to the video transmission signal strength after enabling Enhanced Transmission. Fly with caution. Tap the video transmission signal icon to view the current OcuSync video transmission and 4G video transmission signal strength in the pop-up box.

## Security Strategy

Based on safe flight considerations, Enhanced Transmission can only be enabled when the OcuSync video transmission is in effect. If the OcuSync link is disconnected during flight, it is not possible to disable Enhanced Transmission.

In a 4G-only transmission scenario, restarting the remote controller or DJI Pilot 2 will result in failsafe RTH. The 4G video transmission cannot be restored before the OcuSync link is reconnected.

In the 4G-only transmission scenario, a takeoff countdown will start after the aircraft lands. If the aircraft does not take off before the countdown ends, it will not be allowed to take off until the OcuSync link is restored.

## Remote Controller Usage Notes

If using the 4G network via the DJI Cellular Dongle 2, make sure to install the DJI Cellular Dongle 2 correctly, and turn off the Wi-Fi of the remote controller while using Enhanced Transmission to reduce interference.

If using the 4G network by connecting the remote controller to a mobile device Wi-Fi hotspot, make sure to set the mobile device hotspot frequency band to 2.4 GHz and the network mode to 4G for a better video transmission experience. It is not recommended to answer incoming phone calls with the same smartphone or connecting multiple devices to the same hotspot.

## 4G Network Requirements

The 4G network transmission speed is determined by the 4G signal strength of the aircraft and the remote controller at the current position and the network congestion level of the corresponding base station. The actual transmission experience is closely related to the local 4G network signal conditions. The 4G network signal conditions include both sides of the aircraft and the remote controller with various speeds. If the network signal of either the aircraft or remote controller is weak, has no signal, or is busy, the experience of 4G transmission may drop and lead to the video transmission freezing, a delayed response of the controls, loss of video transmission, or loss of controls.

Therefore, when using Enhanced Transmission:


1. Make sure to use the remote controller and aircraft in locations where the 4G signal is close to full for a better transmission experience.
2. If the OcuSync signal is disconnected, the video transmission may lag and stutter when the aircraft relies fully on a 4G signal. Fly with caution.
3. When the OcuSync signal is poor or disconnected, make sure to maintain an appropriate altitude during the flight. In open areas, try to keep the flight altitude below 120 meters for a better 4G signal.
4. For flight in the city with tall buildings, make sure to set a suitable RTH altitude (higher than the tallest building).

5. When the app prompts that the 4G signal is weak, fly with caution.

## 8.5 Calibration

### Compass Calibration

Only calibrate the compass when prompted to do so by the DJI Pilot 2 app or the aircraft status indicators. Observe the following rules when calibrating the compass.

-  DO NOT calibrate the compass in locations with strong magnetic interference, such as near magnets, parking lots, or construction sites with underground reinforced concrete structures.
- DO NOT carry ferromagnetic materials such as mobile phones during calibration.
- The DJI Pilot 2 app will display a prompt if the compass is affected by strong interference after calibration is complete. Follow the displayed instructions to resolve the compass issue.

## 8.6 Post-Flight Checklist

- Make sure to perform a visual inspection so that the aircraft, remote controller, gimbal camera, Intelligent Flight Battery, and propellers are in good condition. Contact DJI support if any damage is noticed.
- Make sure that the camera lens and vision system sensors are clean.
- Make sure to store aircraft correctly before transporting it.

## 8.7 Maintenance Instructions

To avoid serious injury to children and animals, observe the following rules:

1. Small parts, such as cables and straps, are dangerous if swallowed. Keep all parts out of reach of children and animals.
2. Store the Intelligent Flight Battery and remote controller in a cool, dry place away from direct sunlight to ensure the built-in LiPo battery does NOT overheat. Recommended storage temperature: between 22° and 28° C (71° and 82° F) for storage periods of more than three months. Never store in environments outside the temperature range of 14° to 113° F (-10° to 45° C).

3. DO NOT allow the camera to come into contact with or become immersed in water or other liquids. If it gets wet, wipe dry with a soft, absorbent cloth. Turning on an aircraft that has fallen in water may cause permanent component damage. DO NOT use substances containing alcohol, benzene, thinners, or other flammable substances to clean or maintain the camera. DO NOT store the camera in humid or dusty areas.
4. DO NOT connect this product to any USB interface older than version 3.0.
5. Check every aircraft part after any crash or serious impact. If there are any problems or questions, contact a DJI authorized dealer.
6. Regularly check the Battery Level Indicators to see the current battery level and overall battery life. The battery is rated for 200 cycles. It is not recommended to continue use afterward.
7. Make sure to transport the aircraft with the arms folded when powered off.
8. Make sure to transport the remote controller with antennas folded when powered off.
9. The battery will enter sleep mode during long-term storage. Charge the battery to exit from sleep mode.
10. Store the aircraft, remote controller, battery, and charger in a dry environment. It is recommended to store and transport the product in an environment with an ambient temperature of 15° to 25° C and a humidity of about 40%.
11. Remove the battery before servicing the aircraft (e.g., cleaning or attaching and detaching the propellers). Make sure that the aircraft and the propellers are clean by removing any dirt or dust with a soft cloth. Do not clean the aircraft with a wet cloth or use a cleanser that contains alcohol. Liquids can penetrate the aircraft housing, which can cause a short circuit and destroy the electronics.
12. Make sure to turn off the battery to replace or to check the propellers.

## 8.8 Troubleshooting Procedures

### 1. Why can the battery not be used before the first flight?

The battery must be activated by charging before using it for the first time.

### 2. How to solve the gimbal drift issue during flight?

Calibrate IMU and compass in DJI Pilot 2. If the problem persists, contact DJI Support.

### 3. No function

Check if the Intelligent Flight battery and the remote controller are activated by charging. If the problems persist, contact DJI Support.

### 4. Power-on and start-up problems

Check if the battery has power. If yes, contact DJI Support if it cannot be started normally.

#### 5. SW update issues

Follow the instructions in the user manual to update the firmware. If the firmware update fails, restart all the devices and try again. If the problem persists, contact DJI Support.

#### 6. Procedures to reset to factory default or last known working configuration

Use the DJI Pilot 2 app to reset to factory default.

#### 7. Shutdown and power-off problems

Contact DJI Support.

#### 8. How to detect careless handling or storage in unsafe conditions

Contact DJI Support.

## 8.9 Risks and Warnings

When the aircraft detects a risk after powering on, there will be a warning prompt on DJI Pilot 2. Pay attention to the list of situations below.

- If the location is not suitable for takeoff.
- If an obstacle is detected during flight.
- If the location is not suitable for landing.
- If the compass and IMU experience interference and need to be calibrated.
- Follow the on-screen instructions when prompted.

## 8.10 Disposal



Observe the local regulations related to electronic devices when disposing of the aircraft and remote controller.

### Battery Disposal

Dispose of the batteries in specific recycling containers only after a complete discharge. DO NOT dispose of the batteries in regular trash containers. Strictly follow the local regulations regarding the disposal and recycling of batteries.

Dispose of a battery immediately if it cannot be powered on after over-discharging.

If the power on/off button on the Intelligent Flight Battery is disabled and the battery cannot be fully discharged, contact a professional battery disposal/recycling agency for further assistance.

## 8.11 C3 Certification

DJI Matrice 400 (Model: Matrice 400) is comply with C3 certification, there are some requirements and restrictions when using DJI Matrice 400 in European Economic Area (EEA, i.e. EU plus Norway, Iceland and Liechtenstein).

UAS Class	C3
Sound Power Level	105 dB
Maximum Propeller Speed	4050 RPM


### MTOM Statement

The MTOM of DJI Matrice 400 is 15800 g to comply with C3 requirement.

You must follow the instructions below to comply with the MTOM requirements for each model:

- Make sure that when installing any external devices, the total weight of the aircraft does not exceed the maximum takeoff weight (15800 g). In addition, the external devices must be installed in a location that ensures the center of gravity is maintained within the range of the aircraft's top shell to keep the aircraft stable, and that the vision systems, infrared sensing systems, and auxiliary lights are not blocked. Make sure that the MTOM is not larger than 15800 g for any flight.
- DO NOT use any non-qualified replacement parts, such as intelligent flight batteries or propellers, etc.
- DO NOT retrofit the aircraft.

---

 • The prompt "Low Battery RTH" will not appear if the horizontal distance between the pilot and the aircraft is closer than 5 m.

---

### List of Items, including qualified accessories

Item	Model Number	Dimensions	Weight
Propellers	2510F	63.5×25.4 cm (diameter×thread pitch)	37.4 g (each piece)
Battery	TB100-20254-48.23	274×122×182 mm	4720±20 g
Dual Gimbal Connector <sup>[1]</sup>	M400 DGC	158×320×115 mm	231 g

Item	Model Number	Dimensions	Weight
Third Gimbal Connector <sup>[1]</sup>	M400 TGC	133×91×39 mm	184 g
DJI Cellular Dongle 2 <sup>[1]</sup>	IG831T	4.35×2.3×0.7 cm	11.5 g
Zenmuse H30 Series <sup>[1]</sup>	ZH30/ZH30T	170×145×165 mm	920±5 g
Zenmuse L2 <sup>[1]</sup>	ZL2	155×128×176 mm	905±5 g
Zenmuse P1 <sup>[1]</sup>	ZP1	198×166×129 mm	800 g
Zenmuse S1 <sup>[1]</sup>	ZS1	125×152×171 mm	760±10 g
Zenmuse V1 <sup>[1]</sup>	ZV1	134×119×140 mm	690±10 g

[1] Not included in the original package. Please be careful not to exceed MTOM.

### List of Spare and Replacement Parts

Item	Model Number	Dimensions	Weight
Propellers	2510F	63.5×25.4 cm (diameter×thread pitch)	37.4 g (each piece)
Battery	TB100-20254-48.23	274×122×182 mm	4720±20 g
Dual Gimbal Connector <sup>[1]</sup>	M400 DGC	158×320×115 mm	231 g
Third Gimbal Connector <sup>[1]</sup>	M400 TGC	133×91×39 mm	184 g
DJI Cellular Dongle 2 <sup>[1]</sup>	IG831T	4.35×2.3×0.7 cm	11.5 g
Zenmuse H30 Series <sup>[1]</sup>	ZH30/ZH30T	170×145×165 mm	920±5 g
Zenmuse L2 <sup>[1]</sup>	ZL2	155×128×176 mm	905±5 g
Zenmuse P1 <sup>[1]</sup>	ZP1	198×166×129 mm	800 g
Zenmuse S1 <sup>[1]</sup>	ZS1	125×152×171 mm	760±10 g
Zenmuse V1 <sup>[1]</sup>	ZV1	134×119×140 mm	690±10 g

[1] Not included in the original package. Please be careful not to exceed MTOM.

## Remote Controller Warnings

The remote controller indicator will glow red after disconnecting from the aircraft. DJI Pilot 2 will issue a warning prompt after disconnecting from the aircraft. The remote controller will beep and power off automatically after disconnecting from aircraft and with no operation for a long time.



- Avoid interference between the remote controller and other wireless equipment. Make sure to turn off the Wi-Fi on nearby mobile devices. Land the aircraft as soon as possible if there is interference.

- Users are responsible for correctly adjusting the display brightness when using the monitor in direct sunlight during flight operation.
  - Release the control sticks or press the flight pause button if an unexpected operation occurs.
- 

## Direct Remote ID

1. Transport Method: Wi-Fi Beacon.
2. Method of uploading the UAS Operator Registration Number to the aircraft: Enter DJI Pilot 2 > **GEO Zone Map** > **UAS Remote Identification**, and then upload UAS Operator Registration Number.
3. According to applicable rules, operators shall provide the correct registration number to broadcast in flight. Please make sure you understand and comply with the rules.

## GEO Awareness

GEO Awareness contains the features listed below.

UGZ (Unmanned Geographical Zone) Data update: You can update the FlySafe data by using the data update feature automatically or storing the data in the aircraft manually.

- Method 1: Run DJI Pilot 2, tap **GEO Zone Map** > **FlySafe Database**, select **Auto Update** from **Data Source** to update the FlySafe data automatically.
- Method 2: Check the website of your national aviation authority regularly and obtain the latest UGZ data to import to your aircraft. Run DJI Pilot 2, tap **GEO Zone Map** > **FlySafe Database**, select **Import Local File** from **Data Source**, and then follow the on-screen instructions to store and import the UGZ data manually.



- A prompt will appear in the app when the import completes successfully. If the import fails due to improper data format, follow the on-screen prompt and retry.



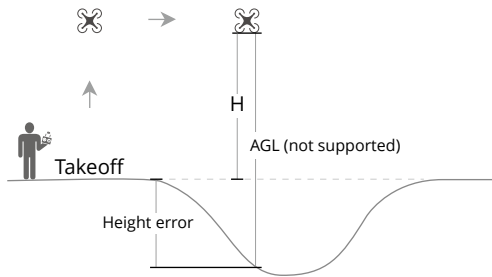
- Before takeoff, users must download the latest GEO Zone data from the official aviation regulation website of the country or region where the aircraft is being used. It is the responsibility of the user to make sure that the GEO zone data is the latest version and that it is applied to every flight.
- 

GEO Awareness Map Drawing: After the latest UGZ data is updated, a flight map with a restricted zone will be displayed in the DJI Pilot 2 app. Name, effective time, height limit, etc., can be viewed by tapping the area.

When GNSS signal is weak, Geo-awareness function will be degraded and the remote controller will provide a prompt. Fly with caution.

### AGL (Above Ground Level) Statement

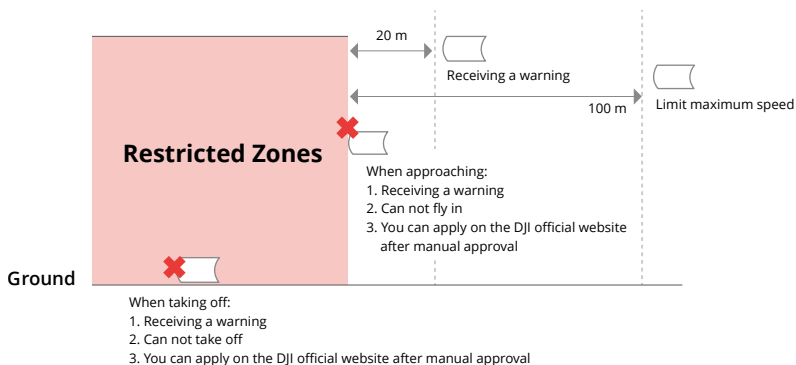
The vertical part of Geo-Awareness may use the AMSL altitude or the AGL height. The choice between these two references is specified individually for each UGZ. Neither AMSL altitude nor the AGL height is supported by DJI Matrice 400. The height  $H$  appears in the DJI Pilot 2 app camera view, which is the height from the aircraft takeoff point to the aircraft. The height above the takeoff point may be used as an approximation but may differ more or less from the given altitude/height for a specific UGZ. The remote pilot remains responsible for not breaching the vertical limits of the UGZ.



## GEO Zones

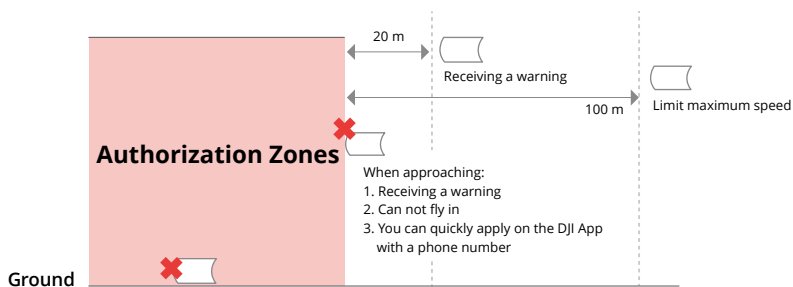
### Restricted Zones

Appear red in the DJI app. You will be prompted with a warning, and flight is prevented. UA cannot fly or take off in these zones. Restricted Zones may be unlocked, to unlock contact [flysafe@dji.com](mailto:flysafe@dji.com) or go to [Unlock A Zone at dji.com/flysafe](https://dji.com/flysafe).



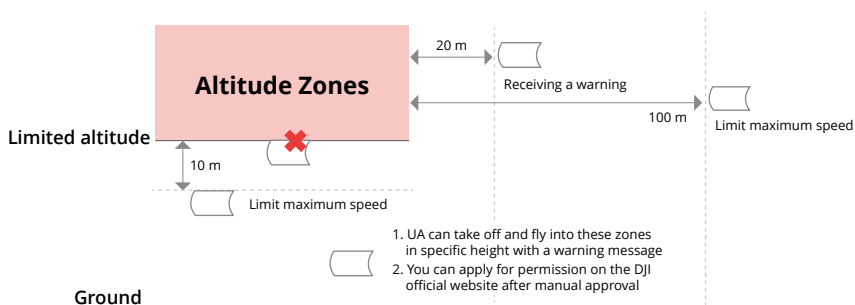
### Authorization Zones

Appear blue in the DJI app. You will be prompted with a warning, and flight is limited by default. UA cannot fly or take off in these zones unless authorized. Authorization Zones may be unlocked by authorized users using a DJI verified account.



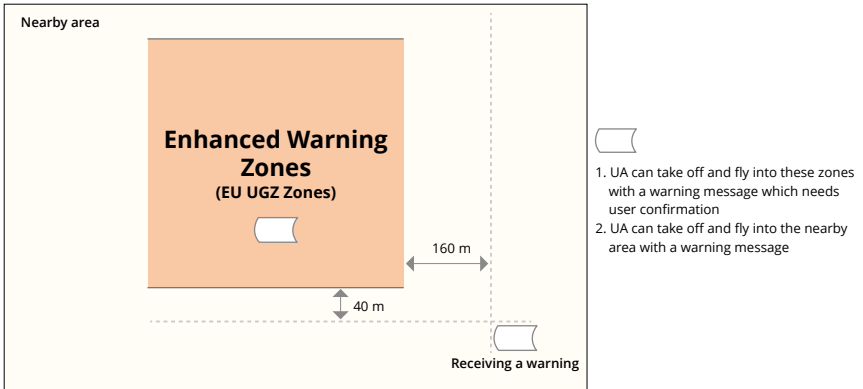
### Altitude Zones

Altitude zones are zones with a limited altitude and appear in gray on the map. When approaching, you will receive a warning in the DJI app.



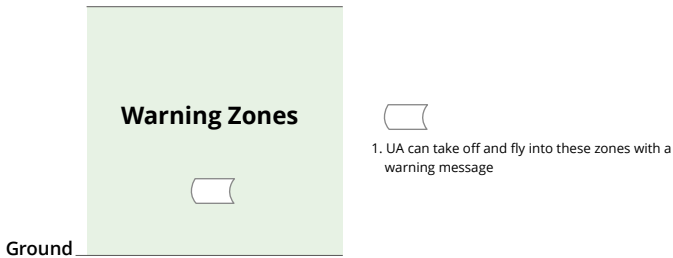
## Enhanced Warning Zones

A warning message will appear when the drone reaches the edge of the zone.



## Warning Zones

A warning message will prompt you when the drone reaches the edge of the zone.



- ⚠️ • When the aircraft and DJI Pilot 2 app cannot obtain a GPS signal, the GEO awareness function will be inoperative. Interference of the aircraft antenna or disabling the GPS authorization in DJI Pilot 2 will cause the GPS signal fails to be obtained.

## EASA Notice

Make sure to read the Drone Information Notices document included in the package before use.

Visit the link below for more EASA notice information on traceability.

<https://www.easa.europa.eu/en/document-library/general-publications/drones-information-notice>

## Original Instructions

This manual is provided by SZ DJI Technology, Inc., and the content is subject to change.  
Address: Lobby of T2, DJI Sky City, No. 53 Xianyuan Road, Xili Community, Xili Street, Nanshan District, Shenzhen, China, 518055.

### 8.12 FAR Remote ID Compliance Information

The unmanned aircraft system is equipped with a Remote ID system that meets the requirements of 14 CFR Part 89.

- The aircraft automatically initiates a pre-flight self-test (PFST) of the Remote ID system before takeoff and cannot take off if it does not pass the PFST <sup>[1]</sup>. The results of the PFST of the Remote ID system can be viewed in a DJI flight control app such as DJI Pilot 2.
- The aircraft monitors the Remote ID system functionality from pre-flight to shut down. If the Remote ID system malfunctions or has a failure, an alarm will be displayed in a DJI flight control app such as DJI Pilot 2.
- The user shall keep the DJI flight control app running in the foreground and always allow it to obtain the location information of the remote controller.
- Developers who develop third-party applications based on the DJI Mobile SDK shall obtain and display the PFST results and the failure status of the Remote ID system during operation by calling specific APIs <sup>[2]</sup>.
- Developers who develop third-party platforms based on the DJI Cloud API shall obtain and display the PFST results and the failure status of the Remote ID system during operation by calling specific APIs <sup>[3]</sup>.
- Developers developing payload devices based on DJI PSDK shall read and comply with the requirements in the PSDK's "Flight Safety Notification", and shall not disrupt or degrade the functionality of the Remote ID system. For "Non-RC Flight" developers, they shall send the true and accurate geographic location information of the pilot or operator obtained by appropriate technology to the Remote ID system by calling specific APIs<sup>[4]</sup> provided by the PSDK, and shall obtain and display the PFST results and the failure status of the Remote ID system during operation by calling specific APIs.
- You can visit the official website of FAA to learn more about aircraft registration and Remote ID requirements.

## Footnotes

- [1] The pass criterion for PFST is that the hardware and software of the Remote ID required-data source and transmitter radio in the Remote ID system are functioning properly.
- [2] For detailed APIs information, please visit <https://developer.dji.com/mobile-sdk/>
- [3] For detailed APIs information, please visit <https://developer.dji.com/cloud-api/>
- [4] For detailed APIs information, please visit <https://developer.dji.com/payload-sdk/>

WE ARE HERE FOR YOU



Contact  
DJI Support



The terms HDMI, HDMI High-Definition Multimedia Interface, HDMI trade dress and the HDMI Logos are trademarks or registered trademarks of HDMI Licensing Administrator, Inc.

This content is subject to change without prior notice.

Download the latest version from



<https://enterprise.dji.com/matrice-400/downloads>

If you have any questions about this document, contact DJI by sending a message to [DocSupport@dji.com](mailto:DocSupport@dji.com).

DJI and MATRICE are trademarks of DJI.  
Copyright © 2025 DJI All Rights Reserved.