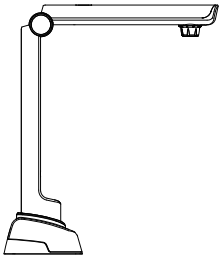


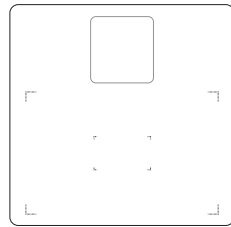
Joy-CamScan E's Instruction Manual

Please confirm the attached

Document Scanner



Location Soft pad



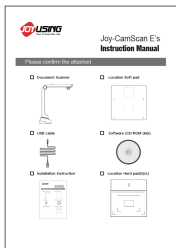
USB cable



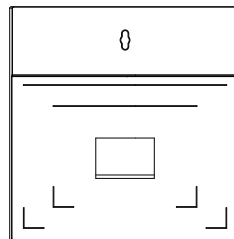
Software (CD-ROM disk)



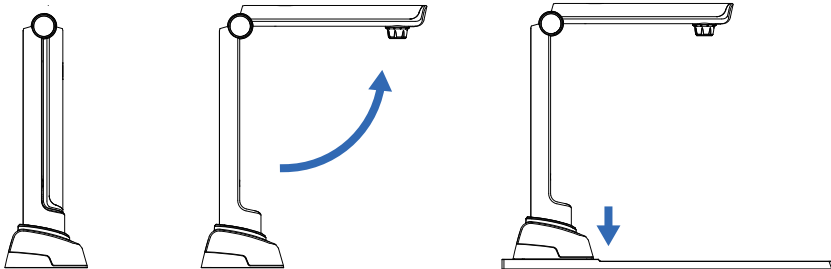
Installation Instruction



Location Hard pad(Opt.)



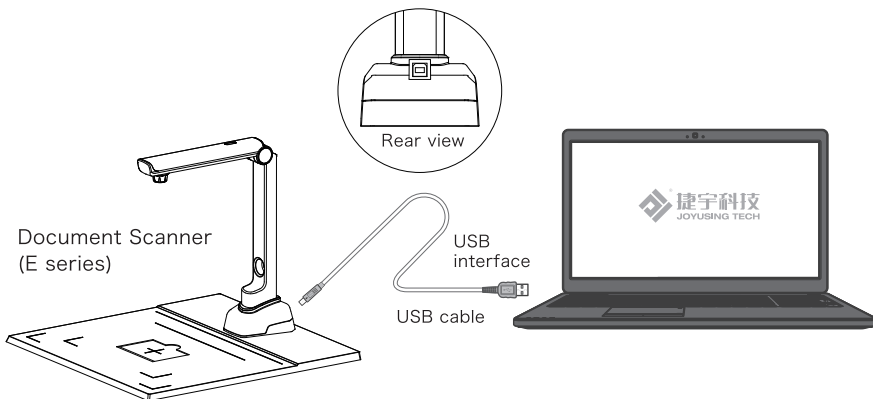
Construction Installation



1. Unfold the forearm upward.
2. Align the center of base to mounting-hole on file pad. Tightening the screw.

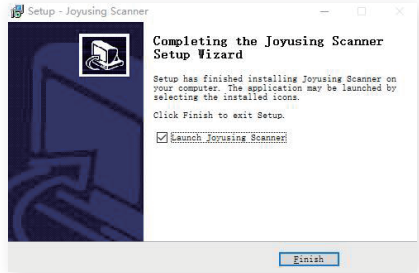
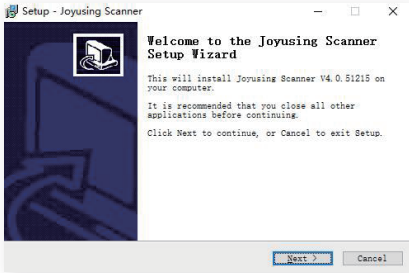
Device connection

Connect the document scanner to USB interface of PC by USB cable and physical connection is done.



Software installation


Double click “Joyusing Document scanner” software setup and follow the indications.

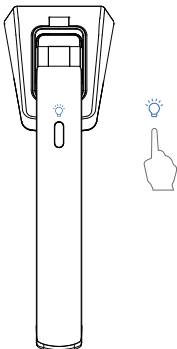


Adjust device and software

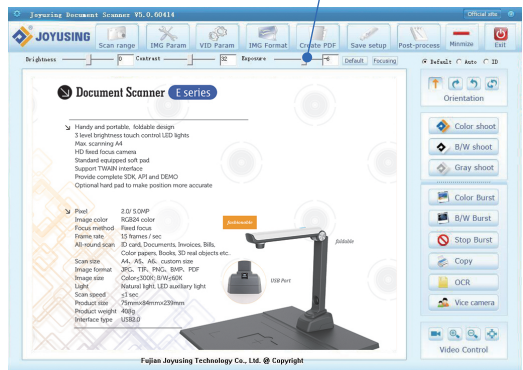
Shooting result adjustment by application software

Adjust the shooting specification value on PC software for optimum result in accordance with environmental light situation. With small sized objects being scanned ,over-exposure might occur due to the high contrast by pad of black background and small sized objects. Slide the exposure value bar and adjust it.

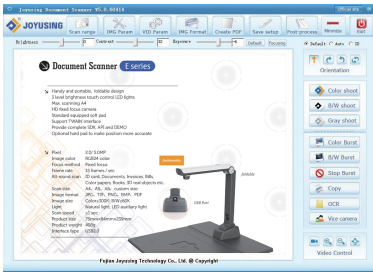
Touch  icon lightly to switch LED light brightness among 3 levers



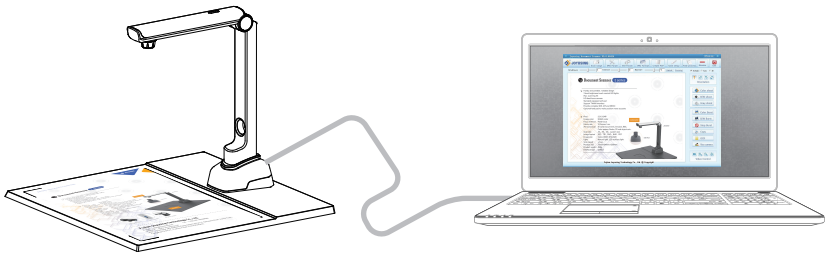
Adjust exposure



Start to operate



Double click "Jousing scanner" Icon, open the operation interface and put target object on pad . Then, click 'shoot' button to scan.



after-sale service



Warranty Card

Address: _____

Email: _____

Zip Code: _____

Date of Purchase: _____

Number of Invoice: _____



Qualification Certificate

QC _____



Please keep Joy-CamScan E500 away from other wireless devices, to avoid any unexpected interruption in usage.

Joyusing Technology Co., Ltd.

Website: www.joyusing.com www.joyusing.en.alibaba.com

Tel: 0086-591-86399086 Email: sales@joyusing.com

Address: No.27 Yangzhou Road Cangshan District, Fuzhou, Fujian, China