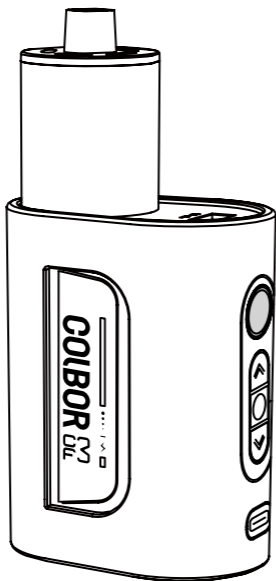


COLBOR



CineFlare CF3 | Fog Machine

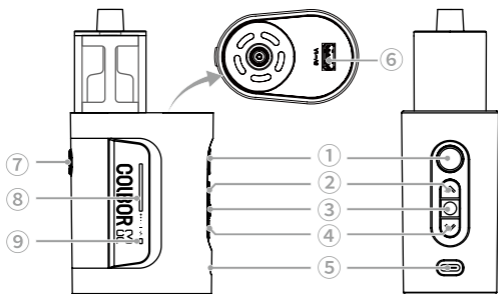
User Manual

Thank you for choosing COLBOR product.
This product is for smoke effects only. Please read this manual carefully before use and follow all instructions mentioned herein.

Caring For Your COLBOR Product

- Please keep the product in a dry, clean, dust-free environment.
- Keep corrosive chemicals, liquids, and heat sources away from the product to prevent mechanical damage.
- Use only a soft and dry cloth for cleaning the product.
- Malfunction may be caused by dropping, the impact of external force.
- Do not attempt to disassemble the product. Doing so voids the warranty.
- Please have the product checked or repaired by authorized technicians if any malfunctions happen.
- Please remove the USB charging cable when the battery is fully charged.
- The product might get hot during use, which is normal. Please allow a certain space for the heat sink when using it.
- If you do not use the product for a long time, it might not be able to turn on instantly due to the dead battery. Please charge the product and it can resume work. Please charge the product every 3 months regularly.
- Failure to follow all the instructions may result in mechanical damage.
- Warranty does not apply to human errors.

Product Instructions



1. Fog Output Button

2. Density + Button

3. Power Button

4. Density - Button

5. Type-C Charging Port

6. USB-A Port

7. Strap Hole(On Silicone Protective Case)

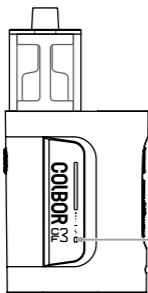
8. Density Indicator

9. Battery Indicator

Operation Instructions

1. Charging

Please use the Type-C cable for charging(5V2A 10W).

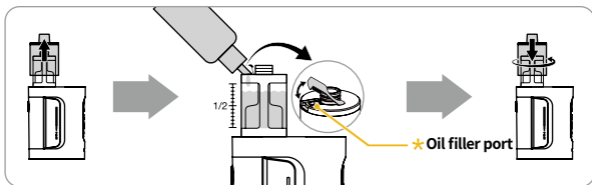


* Indicator

- Green Light Steady Battery High (60% ~ 100% Remaining)
- Orange Light Steady Battery Low (59% ~ 10% Remaining)
- Red Light Steady Run Out of Battery (Below 10% Remaining)
- Red/Orange/Green Light Flashing Charging.

2. Oil Juice Filling

Remove the protection cover. Open the oil-filling cap, align the oil bottle with the port, and squeeze to fill. Close the cap after filling.



* The surface oil on the chamber is a result of aging tests and does not affect product performance.



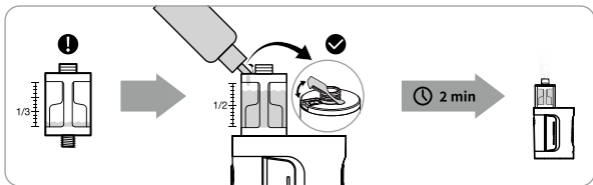
Residual Oil of Test

For first-time use, please fill the chamber to over half and let it sit for 5 minutes before use.

* Please refill the chamber if the liquid level falls below 1/3.

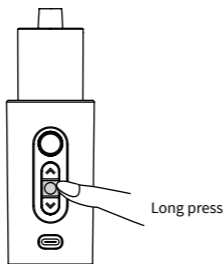
* Please turn off the power and remove the chamber when refilling.

* Before powering on, ensure the chamber is installed and securely tightened



3. Power On/Off

Long press the power button for 3s to turn on/off.



4. Smoke Output/Stop Output

1. Press and hold the smoke output button to output the smoke, release to stop.

*Continuous output time: 1 minute

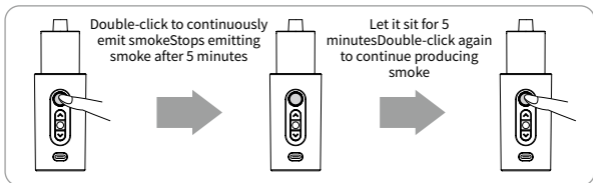
2. Continuously Output

Quickly double click the button to output the smoke continuously, double-click again to stop.

*Continuous Output Duration: 5 minutes.

*After 5 minutes of continuous output, it will automatically stop and rest for 5 minutes before resuming use.

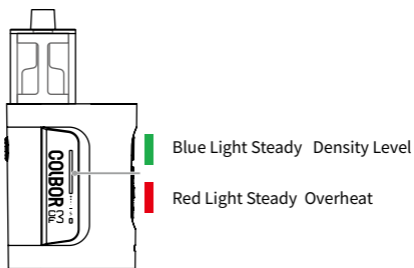
*Ensure the oil covers the chamber bottom when outputting the smoke to prevent dry burning.



5. Smoke Density Adjustment

Short press the Density +/- button to adjust the density(5 levels).

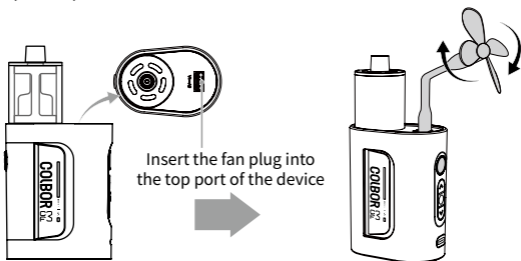
6. Density Indicator



7. Fan Installation

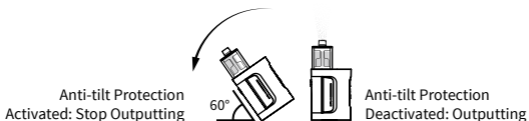
Plug the fan connector into the Type-A port on the top.

Once installed, the fan will automatically turn on when the CF3 is powered on and stop when powered off.

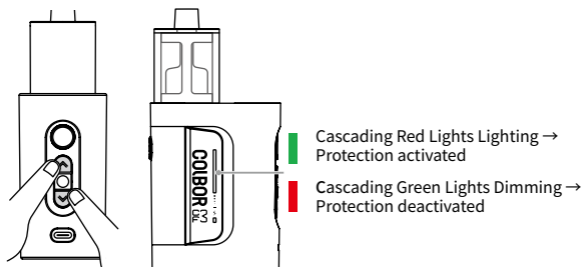


8. Anti-Tilt Protection

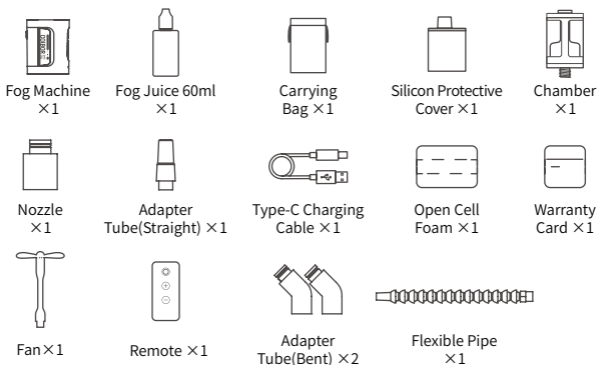
When enabled, if the CF3 tilts $\geq 60^\circ$ while outputting, the protection mechanism will activate and stop outputting.



To enable/disable the protection, please power on the CF3 and long press both the " ^ " and " v " buttons simultaneously.



Packing List



Specifications

Product	CF3
Size	71*41*145mm
Weight	334.5g
Power	30W
Battery Capacity	18650 2500mAh 7.4V 18.5Wh
Chamber Capacity	12ml
Battery Runtime	30min @ 100% Output
Charging Time	2.5H
Auto Power-Off Time	5min of Inactivity