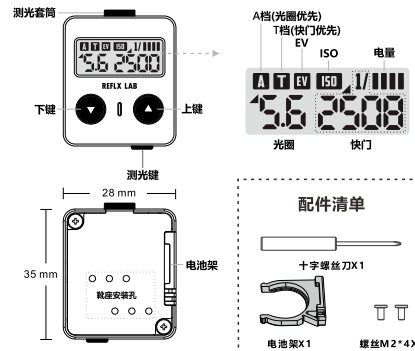


## REFLX LAB 测光表入门手册



REFLX LAB

### 基本参数

材质: 铝合金, PC塑料  
颜色: 银色/黑色  
测光: 约30°平均测光  
EV范围: 1-22  
冷靴位置: 偏左, 居中, 偏右  
重量: 16.5g  
主要尺寸: 35mm\*28mm\*11.5mm  
工作温度: -12°C-60°C 工作湿度: 10%-90%  
续航: CR1632纽扣电池, 理论待机时间1年以上。

### ISO范围: 8-6400

8, 10, 12, 16, 20, 25, 32, 40, 50, 64, 80, 100, 125, 160, 200, 250, 320, 400, 500, 640, 800, 1000, 1250, 1600, 2000, 2500, 3200, 4000, 5000, 6400

### 快门范围: 30S-1/8000S

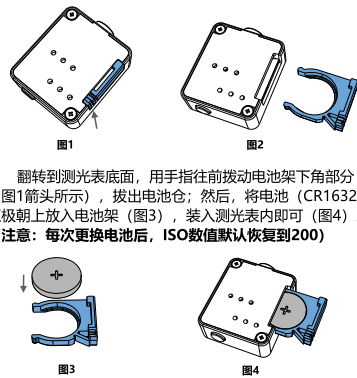
30, 15, 8, 4, 2, 1, 1/2, 1/4, 1/8, 1/15, 1/30, 1/60, 1/125, 1/250, 1/500, 1/1000, 1/2000, 1/4000, 1/8000

### 光圈范围: 1-32

1, 1.2, 1.4, 1.7, 2, 2.2, 2.6, 2.8, 3.5, 4, 4.5, 5.6, 6.7, 8, 9.5, 11, 13, 16, 19, 22, 32

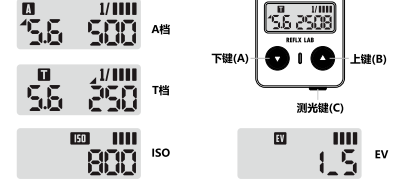
### EV补偿: -2 - +2

### 电池安装



翻转到测光表背面, 用手指往前拨动电池架下角部分(图1箭头所示), 拔出电池仓; 然后, 将电池 (CR1632) 正极朝上放入电池架(图3), 装入测光表内即可(图4)。(注意: 每次更换电池后, ISO数值默认恢复到200)

### 操作说明

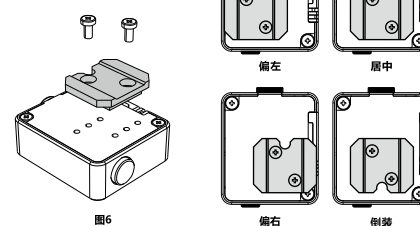


如图5所示, A, B, C键;  
开关机: 单击C键开机, 长按A键3秒关机。1分钟内无操作熄屏, 5分钟自动关机。  
ISO调节: 长按B键2S, ISO图标闪烁, 此时按A或B键调整ISO值, 单击C键确认并退出。  
A/T档: 双击C键切换A/T档。  
A档为光圈优先档, 此时可通过A/B键切换光圈值, 快门值随着光圈值变化而变化。  
T档为快门优先, 此时可通过A/B键切换快门值, 光圈值随着快门值的变化而变化。

EV曝光补偿: 长按C键2S, 切换到EV, 通过A/B键调节曝光补偿值。  
电量: 右上角格子消失即为电量耗尽。

### 冷靴安装

如图6安装冷靴插。靴插位置可偏右, 偏左, 居中; 也可倒装, 让靴插缺口朝后。



## 售后保修卡

购买渠道: .....

微信/旺旺: .....

客户姓名: .....

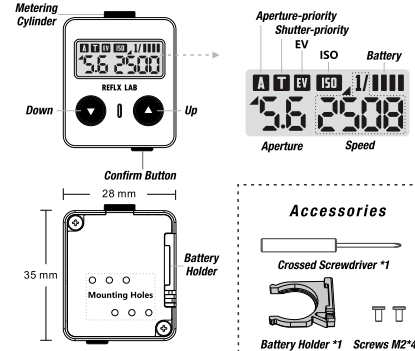
退换货原因: .....

寄回地址: 可通过以下联系方式咨询。

本页为测光表的售后保修卡, 提供为期一年的保修(人为损坏不在保修范围, 如摔坏或拆开损坏等), 请妥善保存此售后保修卡。更多疑问可通过微信(reflxlabs)/小红书(REFLX LAB)/淘宝店铺(反射试验 REFLX LAB)联系我们。

REFLX LAB

## REFLX LAB Light Meter User Manual



REFLX LAB

### Specifications

Material: PC, Aluminium Alloy  
Color: Silver, Black  
Metering: approx. 30 degree average metering  
EV Range: 1-22  
Mount Position: Left, Center, Right Weight: 16.5g  
Main Dimensions: 35mm\*28mm\*11.5mm(1.37in x 1.10in x 0.45in)  
Working temperature: -15°C-60°C (5°F-140°F)  
Working humidity: 10%-90%  
Battery: 1x CR1632 button cell lithium battery  
Battery Life: theoretical standby time of over one year

### ISO Range: 8-6400

8, 10, 12, 16, 20, 25, 32, 40, 50, 64, 80, 100, 125, 160, 200, 250, 320, 400, 500, 640, 800, 1000, 1250, 1600, 2000, 2500, 3200, 4000, 5000, 6400

### Speed Range: 30S-1/8000S

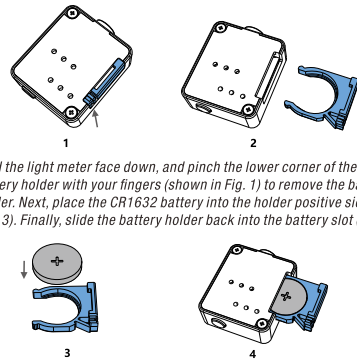
30, 15, 8, 4, 2, 1, 1/2, 1/4, 1/8, 1/15, 1/30, 1/60, 1/125, 1/250, 1/500, 1/1000, 1/2000, 1/4000, 1/8000

### Aperture Range: 1-32

1, 1.2, 1.4, 1.7, 2, 2.2, 2.6, 2.8, 3.5, 4, 4.5, 5.6, 6.7, 8, 9.5, 11, 13, 16, 19, 22, 32

### EV Range: -2 - +2

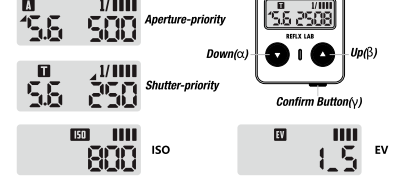
### Battery Installation



Hold the light meter face down, and pinch the lower corner of the battery holder with your fingers (shown in Fig. 1) to remove the battery holder. Next, place the CR1632 battery into the holder positive side up (Fig. 3). Finally, slide the battery holder back into the battery slot (Fig. 4).

(Note: the ISO value reverts to 100 by default after each battery change)

### Instructions



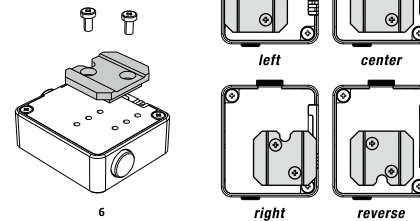
"α", "β", "γ" button as shown in Figure 5.  
On/Off: Short press "γ" to turn on, long press "α" for 3s to switch off. Device enters sleep mode after 1-minute of inactivity, and automatically shuts off after 5-minutes.  
ISO: Long press "β" for 3s (until the ISO icon flashes), then press the "α" or "β" to adjust ISO, click "γ" to confirm selection.  
A/T: Double-click the "γ" to switch between A/T.  
A (Aperture Priority Mode) - the aperture value can be adjusted via the "α" or "β" and the shutter value changes as the aperture value changes.  
T (Shutter Priority Mode) - the shutter value can be adjusted via the "α" or "β" and the aperture value changes with the shutter value.

EV Compensation: Long press the "γ" button for 2S to switch to EV and the "α" or "β" to adjust the exposure compensation value.

Power: The battery icon in the upper right corner displays battery level.

### Mount Installation

Install the shoe mount as shown in Figure 6.  
Position: right, left, and center; reverse fitting also available.



### Service and After Sales

If you have any questions or after-sales problems, please contact us by email, or send us a message directly on Instagram.

Email: [help@reflxlabs.com](mailto:help@reflxlabs.com)

Instagram: [reflx\\_lab](https://www.instagram.com/reflx_lab)