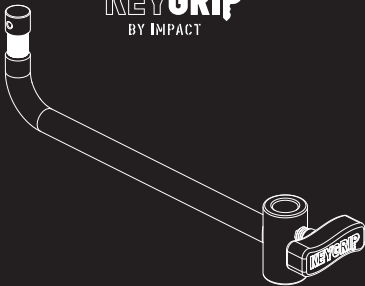


KEYGRIP
BY IMPACT



**10 in. BABY
OFFSET ARM**

Thank you for choosing KeyGrip.

All KeyGrip stand accessories are precision manufactured to exact standards and specifications for pro video, photo, and cinematography applications.

The SA-BOA-10 Baby Offset Arm is a simple yet go-to lighting accessory that provides 10 inches of clearance from a light stand. This offset arm is an ideal accessory for photo and film lighting applications where its primary function is to provide more room to tilt a large soft box or light modifier without interference from the light stand's riser.

When a light is placed above the axis of your lens for flat lighting, this arm also provides an offset to the left or right to keep the light stand out of the picture frame.

The arm features a 5/8-inch baby receiver with two locking knob positions for a secure hold on short and long baby pins. The baby pin sits at a 90° angle from the arm and has knurling to prevent rotation.

Precautions

- Please read and follow these instructions, and keep this manual in a safe place.
- Make sure to line up one leg with the arm.
- Always use sandbags when using this product.
- Make sure that this product is intact and that there are no missing parts.
- Do not exceed the light stand's maximum load capacity.
- Make sure all connections are secure before proceeding.
- Always add a safety cable for underslung lights.
- All images are for illustrative purposes only.

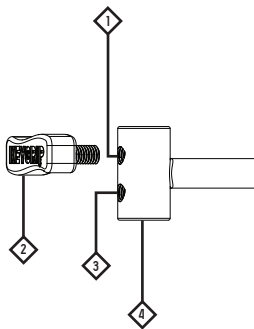
Specifications

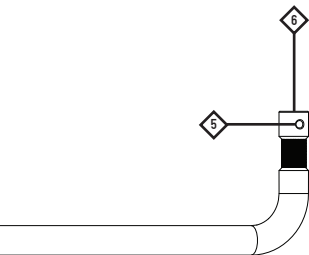
SA-B0-10

Connections	5/8 in. (16 mm) baby receiver (two locking positions) 5/8 in. (16 mm) baby pin
Construction Material	Steel
Finish	Chrome
Length	11.41 in. (289.9 mm)
Width	1.1 in. (28 mm)
Height	3.7 in. (93.9 mm)
Weight	1.5 lb. (680 g)

Overview

1. Long baby pin locking knob position
2. Locking knob
3. Short baby pin locking knob position
4. Baby receiver
5. Hole for safety pin
6. Baby pin

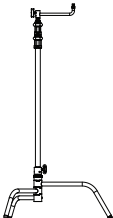
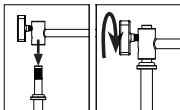




Setting Up the Offset Arms Using a C-Stand

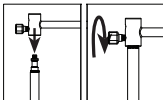
Screw the looking knob into the appropriate hole, depending on the length of the baby pin.

Make sure the C-stand's top leg is facing the same direction as the offset arm.



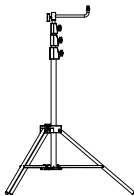
Using a Light Stand with a Short Baby Pin

Screw the looking knob
into the appropriate
hole, depending on the
length of the baby pin.



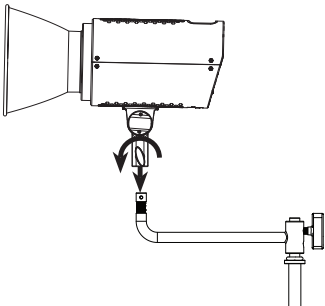
Make sure the stand's
legs are fully extended
and the struts are
parallel to the floor.

Point one of the light
stand's legs in the
same direction as the
offset arm.



Mounting a Light Fixture to the Arm

1. Loosen the locking knob of the light fixture's baby receiver. Make sure the lock is completely loosened so the offset arm's baby pin will fit entirely into the receiver.
2. Aim the light and tighten the light's locking knob until secure.



One-Year Limited Warranty

This Impact product is warranted to the original purchaser to be free from defects in materials and workmanship under normal consumer use for a period of one (1) year from the original purchase date or thirty (30) days after replacement, whichever occurs later. The warranty provider's responsibility with respect to this limited warranty shall be limited solely to repair or replacement, at the provider's discretion, of any product that fails during normal use of this product in its intended manner and in its intended environment. Inoperability of the product or part(s) shall be determined by the warranty provider. If the product has been discontinued, the warranty provider reserves the right to replace it with a model of equivalent quality and function.

This warranty does not cover damage or defect caused by misuse, neglect, accident, alteration, abuse, improper installation or maintenance. EXCEPT AS PROVIDED HEREIN, THE WARRANTY PROVIDER MAKES NEITHER ANY EXPRESS WARRANTIES NOR ANY IMPLIED WARRANTIES, INCLUDING BUT NOT LIMITED TO ANY IMPLIED WARRANTY OF MERCHANTABILITY OR FITNESS FOR A PARTICULAR PURPOSE. This warranty provides you with specific legal rights, and you may also have additional rights that vary from state to state.

To obtain warranty coverage, contact the Impact Customer Service Department to obtain a return merchandise authorization ("RMA") number, and return the defective product to Impact along with the RMA number and proof of purchase. Shipment of the defective product is at the purchaser's own risk and expense. For more information or to arrange service, visit www.impactstudiolighting.com or call Customer Service at 212-594-2353.

Product warranty provided by the Gradus Group.
KeyGrip and Impact are registered trademarks of
the Gradus Group.

© 2026 Gradus Group LLC. All Rights Reserved.



KEYGRIP & IMPACT®
Gradus Group Brands