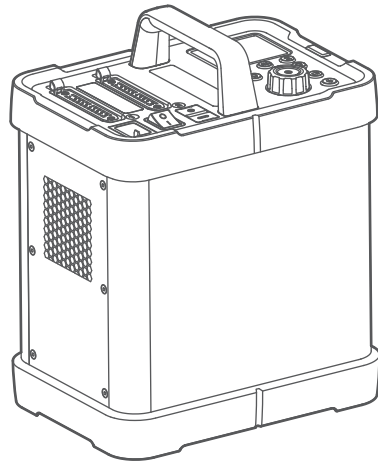


合格证  
QC PASS

Godox



### 深圳市神牛摄影器材有限公司

地址：深圳市宝安区福海街道塘尾社区耀川工业园厂房 2 栋  
电话：0755-29609320（8062） 传真：0755-25723423 邮箱：godox@godox.com

### GODOX Photo Equipment Co., Ltd.

Add: Building 2, Yaochuan Industrial Zone, Tangwei Community, Fuhai Street, Bao'an District,  
Shenzhen 518103, China Tel: +86-755-29609320(8062) Fax: +86-755-25723423  
E-mail: godox@godox.com

[www.godox.com](http://www.godox.com)

Made in China | 705-P24000-03



# P2400

电箱  
Power Pack

使用手册  
Instruction Manual

# Contents

21	<b>Foreword</b>	38	<b>Sync Triggering</b>
22	<b>Warning</b>	38	<b>Protection Function</b>
23	<b>Name of Parts</b>	39	<b>Technical Data</b>
23	Power Pack	40	<b>Firmware Upgrade</b>
24	<b>Display</b>	40	<b>Maintenance</b>
24	<b>Included Accessories</b>		
25	<b>Optional Accessories</b>		
25	<b>Power Supply</b>		
26	<b>Operation</b>		
26	Power On		
26	Light Selection		
26	Modeling Lamp		
28	<b>Wireless Mode Selection</b>		
29	2.4G Wireless Mode		
31	433MHz Wireless Mode		
31	<b>Flash Mode— M Manual Flash</b>		
32	<b>Display Flash Duration</b>		
32	<b>Stable Color Temperature Function</b>		
33	<b>Flash Mode—Multi: Stroboscopic Flash</b>		
33	Calculating the Shutter Speed		
33	Number of Flashes / Flash Frequency = Shutter Speed		
34	Maximum Stroboscopic Flashes:		
34	<b>Optic S1 Secondary Unit Setting</b>		
35	<b>Optic S2 Secondary Unit Setting</b>		
36	<b>Setting Custom Functions</b>		

## Conventions used in this Manual

- This manual is based on the assumption that both the camera, power pack and camera flash's power switches are powered on.
- The following alert symbols are used in this manual:
  - ⚠ The Caution symbol indicates a warning to prevent shooting problem.
  - 📌 The Note symbol gives supplemental information.

## Forward

### Before using this product

Please read this manual carefully to make sure the correct operation and exert the optimum function. And well keep it for future reference.

### Thank you for purchasing !

Godox P2400 is a Power Pack with 2400Ws strong power, stable output, constant color temperature, and built-in GODOX 2.4G and 433M wireless system. Collocate with a H2400P Flash Head(optional), the ultra-bright LED Modeling light, and with P2400 built-in 2.4G wireless X system and 433MHz wireless, it is compatible with Godox triggers like XPro, X1 and X2 and FT-16.

### The P2400 offers:

- Stable Color Temperature Mode:  
color temperature changes within  $\pm 75K$  over the whole power range(stable color temperature mode).
- LED Modeling Lamp:  
60W LED modeling lamp and light brightness can be freely adjusted.
- Wireless Compatibility:  
With built-in Godox 2.4G wireless system and 433MHz wireless system, it is wirelessly compatible with Xpro, X1, X2 series and FT-16, and is equipped with 2 pieces 3.5mm sync jacks, which can realize a variety of synchronous triggering methods.
- Flash Duration:  
The flash duration (t0.1) max. can up to 1/17800s.
- 2 Kinds of Flash Modes:  
Supports manual flash and Multi flash.
- Precise Power Control:  
Precisely control the power settings in 0.1 stop increment from 1.0 to 10, and 91 stops in total.
- 2 Power Sockets:  
Double power sockets for using one or two flash heads.
- Optical Triggering:

S1/S2 Secondary Unit Setting and Secondary Unit Setting with anti-preflash

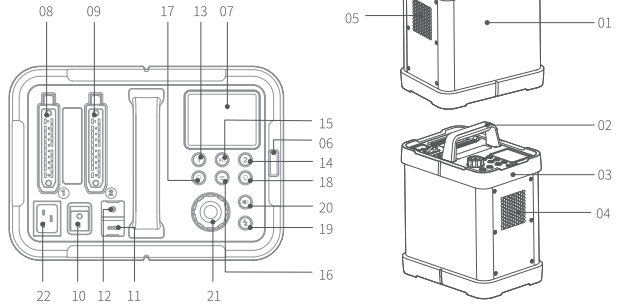
- Delay Flash:  
0.01 to 30s, can be served as second-curtain sync.
- With Mask Feature:  
Greatly saving your post-production time and money.
- 3.5 Inch Colors Display:  
Intuitive display and precious control.

## Warning

- ⚠ **Always keep this product dry. Do not use in rain or in damp conditions.**
- ⚠ **Do not disassemble. Should repairs become necessary, this product must be sent to an authorized maintenance center.**
- ⚠ **Keep out of reach of children.**
- ⚠ **Do not use the product in the presence of flammable gases, chemicals and other similar materials. In certain circumstance, these materials may be sensitive to the strong light emitting from this product and fire or electromagnetic interference may result.**
- ⚠ **Do not leave or store the flash unit if the ambient temperature reads over 50°C. Otherwise the electronic parts may be damaged.**
- ⚠ **As this product do not have waterproof function, please take measures of waterproof in rainy or damp environment.**
- ⚠ **Turn off the power pack immediately in the event of malfunction.**

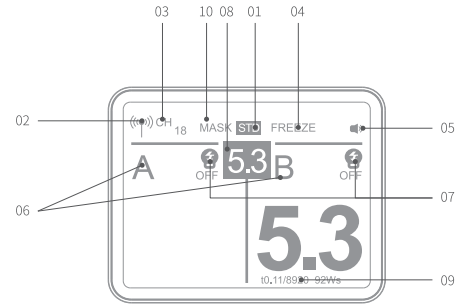
## Name of Parts

### Power Pack:



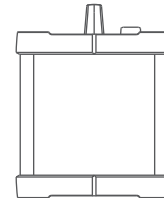
- |   |  |
|---|--|
| 01. Power Pack Body                               | 12. 3.5mm Sync Cord Jack                     |
| 02. Handle  | 13. Adjustment Button for No. 1 Light        |
| 03. Protect Cover                                 | 14. Adjustment Button for No. 2 Light        |
| 04. Fan Inlet                                     | 15. All Adjustment Button for Both Lights    |
| 05. Fan Outlet                                    | 16. ≡ > Menu Button                          |
| 06. Optical Light Cover                           | 17. < Q > Modeling Button                    |
| 07. Control Panel                                 | 18. < Q > Modeling Button                    |
| 08. Power Socket 1 for Flash<br>Head's Power Cord | 19. < ⚡ > Test Button/ Flash Ready Indicator |
| 09. Power Socket 2 for Flash<br>Head's Power Cord | 20. < 🔊 > Beep Button                        |
| 10. Power Switch                                  | 21. Select Dial                              |
| 11. Type-C Firmware Upgrade Port                  | 22. Power Socket                             |

## Display



- |   |                   |
|---|-------------------|
| 1. STD Recycle                          | 6. Group (GR)     |
| 2. Radio Transmission Wireless Shooting | 7. Modeling Lamp  |
| 3. Channel (CH)                         | 8. Power Level    |
| 4. FREEZE Stable Color Temperature      | 9. Flash Duration |
| 5. Beeper                               | 10. MASK          |

## Included Accessories



Power Pack × 1



Power Cord × 1

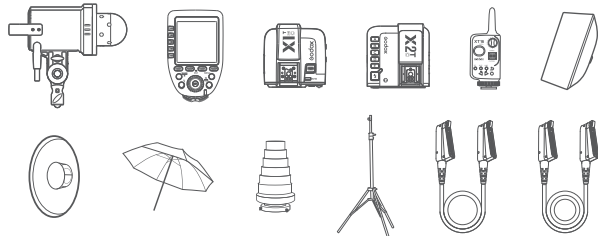


Instruction Manual  
(Including Warranty) × 1

## Optional Accessories

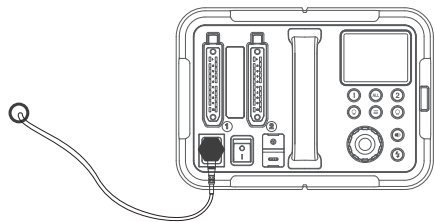
P2400 power pack can be used in combination with the following optional accessories so as to achieve best photography effects:

H2400P Flash head, XPro, X1 and X2 flash trigger, XT16 Transmitter , softbox, beauty dish, umbrella, snoot, light stand, H2400P 5m Head Extension Cord EC2400, H2400P 10m Head Extension Cord EC2400L, etc.



## Power Supply

AC Power Supply: insert the output end of power cord into the power socket of power pack to gain power source.



## Operation

### Power On/Off

Slide power switch to "-" to power on;  
Slide power switch to "o" to power off.

Note: Unplug the power cord when the power pack is not being used.

### Flash Light Adjustment

When connecting the flash head (optional) into the power socket 1 or 2, short press the corresponding adjustment button 1 or 2 to set parameters. Short press ALL button to adjust the two lights simultaneously.

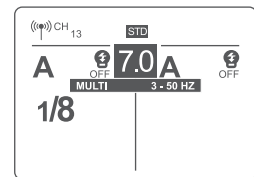
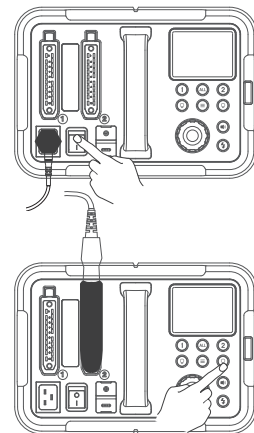
Note: When 1200Ws flash head and 2400Ws flash head are plugged into this power pack at same time, the corresponding display screen of the 1200Ws flash head shows "Not Compatible". In this state, the 1200Ws lamp holder cannot work, and the 2400Ws flash head works normally.

### Modeling Lamp

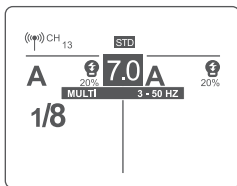
P2400 Power pack is equipped with a 60W LED modeling lamp which has two continuous lighting modes: Percentage and PROP.

There are three modes: OFF, Percentage(1%-100%) and PROP. Short press the Modeling Lamp Button, and the three modes will be displayed on the LCD panel in sequence.

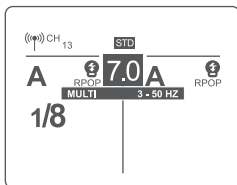
1.OFF: the modeling lamp is off.



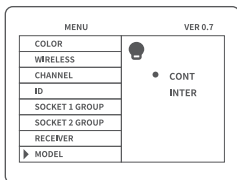
2. Percentage: 1%~100%(to prevent overheat, <45°C the fan rotates in low speed while >45°C in high speed).



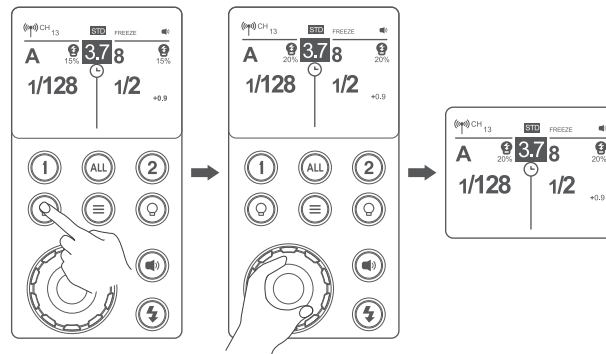
3.PROP: The modeling lamp's power changes with the flash's power. The bigger power the flash has, the brighter the modeling lamp is(to prevent overheat, <45°C the fan rotates in low speed while >45°C in high speed).



4. Modeling light has continuous and intermittent lighting functions. Short press < ≡ > to enter the main menu, and turn the select dial to select the modeling light, then short press the select dial once and rotate the select dial to select "CONT" or "INTER". Press < ≡ > menu button again to return to the main interface.



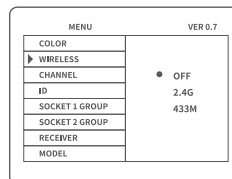
5. Long press the modeling lamp and choose the percentage. Then, turn the select dial to adjust brightness from 1% to 100%.



## Wireless Flash Mode

With built-in 2.4G and 433MHz wireless, P2400 power pack can be set as a receiver end. Enter the menu to choose wireless on, off, 2.4G or 433MHz wireless mode.

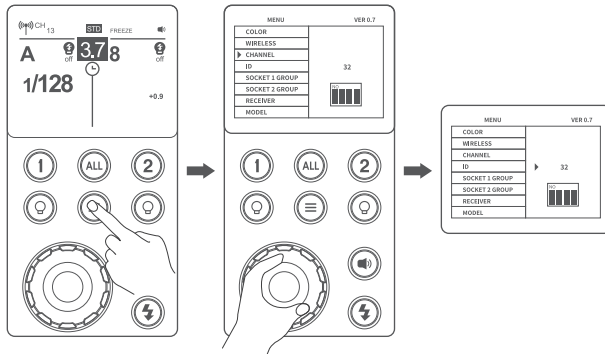
Press the < ≡ > button to enter the main menu. Turn the select dial to choose wireless. Then, short press the select dial once and turn it to choose 2.4G or 433MHz mode. Press the < ≡ > button to back to the main interface and < ≡ > will be displayed onto the left upper corner of the screen.



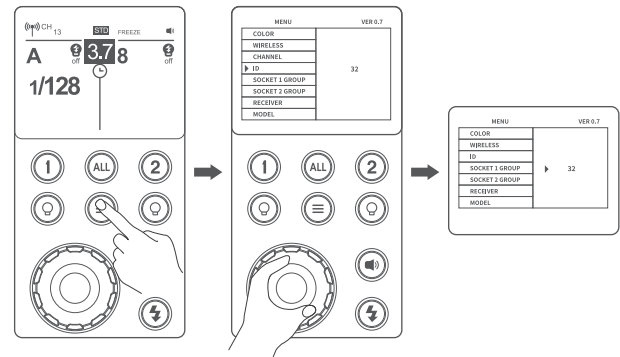
## 2.4G Wireless Mode

When choosing 2.4G wireless transmission, purchase XPro, X1 or X2 series flash triggers (optional) is needed. If there are other wireless flash systems nearby, you can change the channel (CH), identification number (ID) and group (GR) to prevent signal interference. The channels (CH), identification numbers (ID) and groups (GR) of the transmitter unit and the receiver unit must be set to the same.

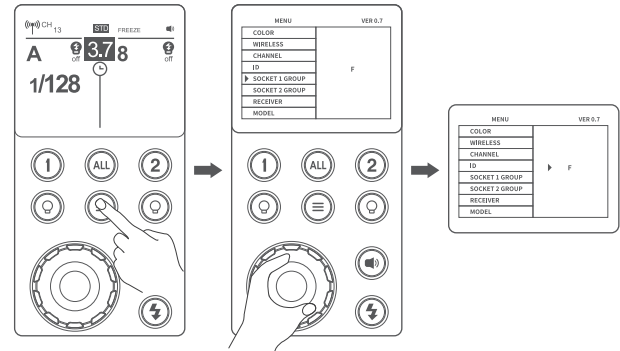
1.Channel (CH) setting: press the < ≡ > button to enter menu. Turn the select dial to choose channel. Then, short press the select dial once and turn it to choose channel from 1 to 32.



2. Identification number (ID) setting: short press the < ≡ > button to enter menu, turn the select dial to choose ID. Then, short press the select dial once and turn it to choose ID from OFF and 01 to 99.



3. Group (GR) setting: short press the < ≡ > button to enter menu, in the menu, turn the select dial to choose the corresponding group of socket 1 or socket 2. Then, short press the select dial once and turn it to choose group from 0 to 9 and A to F.



### 433MHz Wireless Mode

When choosing 433MHz wireless transmission, purchase FT-16 remote control (optional) is needed. Please set the channels and groups of remote control to the same with the power pack's.

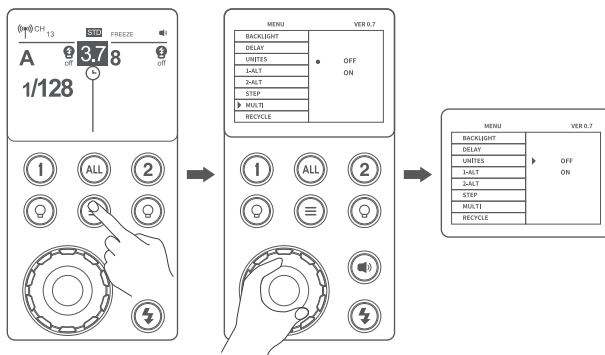
To get more using details of remote control, please refer to FT-16 instruction manual.

MENU		VER 0.7
COLOR		
WIRELESS		
CHANNEL		
ID		ON
SOCKET 1 GROUP		2.4G
SOCKET 2 GROUP		433M
RECEIVER		
MODEL		

## Flash Mode-----M: Manual Flash

The flash output is adjustable from 1.0 power to 10 power in 0.1 step increments. To obtain a correct flash exposure, use a hand-held flash meter to determine the required flash output.

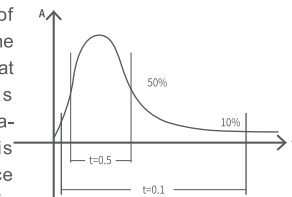
1. Press < ≡ > button to enter the menu. Turn the select dial to choose multi flash. Then, short press the select dial and turn it to choose "OFF". Press the < ≡ > button to back to the main interface.
2. Turn the select dial to set the flash output.



31

## Display Flash Duration

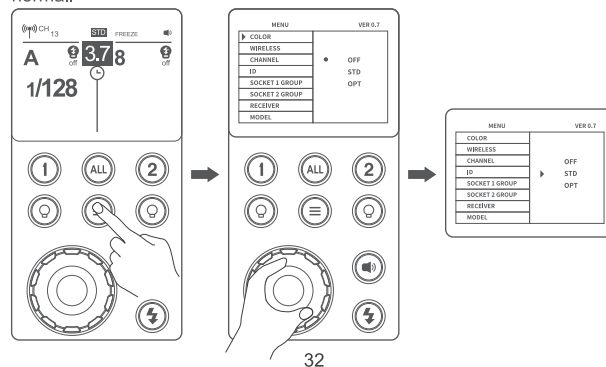
Flash duration refers to the length of time that from flash's firing to reach the half peak at maximum. The half peak at maximum is usually expressed as  $t=0.5$ . In order to provide the photographer with more concrete data, this product adopts  $t=0.1$ . The difference between  $t=0.5$  and  $t=0.1$  is shown in the following picture.



## Stable Color Temperature Function

When use this function, the color temperature changes within  $\pm 75K$  over the entire power range.

Press the < ≡ > button to enter the main menu and turn the select dial to choose color mode. Short press the select dial once and turn it to choose OFF, STD or OPT (STD means regular state, and OPT means optimum state), and Flash Ready Indicator < ⚡ > will blink (the beeper will alarm). Now press the Test Button to discharge, and the flash can be used as normal.



32

## Flash Mode-Multi: Stroboscopic Flash

With stroboscopic flash, a rapid series of flashes is fired. It can be used to capture multiple images of a moving subject in a single photograph. You can set the firing frequency (number of flashes per sec. expressed as Hz), the number of flashes, and the flash output.

1. Press  $\langle \equiv \rangle$  to enter the menu and turn the select dial to choose multi flash. Then, short press the select dial and turn it to choose on. Press the  $\langle \equiv \rangle$  button to back to the main interface.

2. Set the flash frequency and flash times.

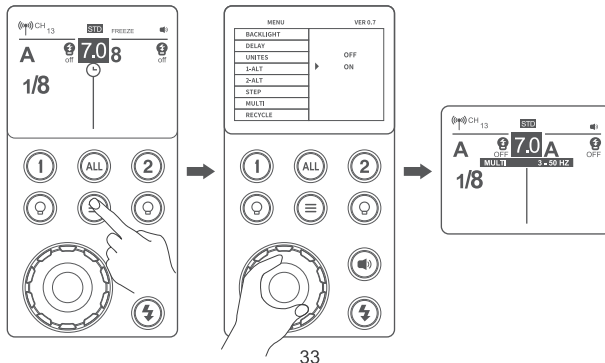
- Press the select dial to choose flash times. Turn the Select Dial to set the number.
- Press the select dial to choose flash frequency. Turn the Select Dial to set the number.
- After you finish the setting, press the select dial to confirm.

### Calculating the Shutter Speed

During stroboscopic flash, the shutter remains open until the firing stops. Use the formula below to calculate the shutter speed and set it with the camera.

### Number of Flashes / Flash Frequency = Shutter Speed

For example, if the number of flashes is 10 and the firing frequency is 5 Hz, the shutter speed should be at least 2 seconds.



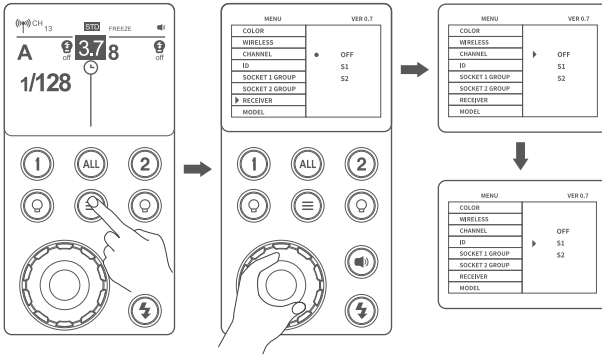
- Stroboscopic flash is most effective with a highly reflective subject against a dark background.
- Using a tripod and a remote control is recommended(Optional).
- Stroboscopic flash can be used with“buLb”.
- The number of flashes will be limited as shown by the following table.

### Maximum Stroboscopic Flashes:

Flash Output \ Hz	1	2	3	4	5	6-7	8-9	10	11	12-14	15-19	20-50	60-99
1/4	7	6	5	4	3	3	3	2	2	2	2	2	2
1/8	20	15	12	10	8	6	5	4	4	4	4	4	4
1/16	30	30	30	20	20	20	10	8	8	8	8	8	8
1/32	60	60	60	50	50	40	30	20	20	20	18	16	12
1/64	90	90	90	80	80	70	60	50	40	40	35	30	20
1/128	100	100	100	100	100	90	80	70	70	60	50	40	40
1/256	100	100	100	100	100	90	80	70	70	60	50	40	40
1/512	100	100	100	100	100	90	80	70	70	60	50	40	40

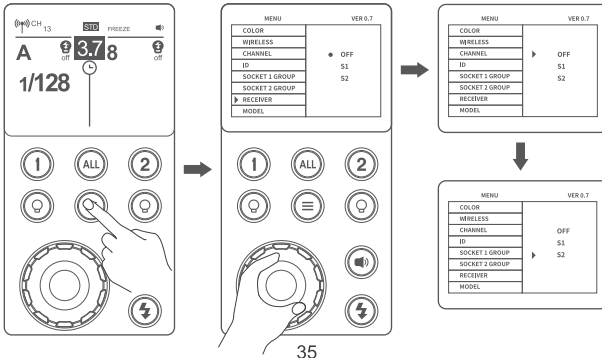
## Optic S1 Secondary Unit Setting

Press the  $\langle \equiv \rangle$  button to enter menu and turn the select dial to choose receiver. Then, short press the select dial and choose S1 function, so that this flash can function as an optic S1 secondary flash with optic sensor. With this function, the flash will fire synchronously when the main flash fires, the same effect as that by the use of radio triggers. This helps create multiple lighting effects.



## Optic S2 Secondary Unit Setting

Press the  $\equiv$  button to enter menu and turn the select dial to choose receiver. Then, short press the select dial and choose S2 function, so that this flash can also function as an optic S2 secondary flash with optic sensor. This is useful when cameras have pre-flash function. With this function, the flash will ignore a single “preflash” from the main flash and will only fire in response to the second, actual flash from the main unit.



## Setting Custom Functions

1. Press the  $\equiv$  button to enter menu. Turn the select dial to choose custom functions.
2. Short press the select dial and turn it to choose the corresponding functions.
3. Short press the select dial again or short press the  $\equiv$  button to back to the main interface.

MENU Custom Function Settings			
Custom Functions	Settings	Settings & Descriptions	Restrictions
COLOR	OFF	Off	Stable color temperature mode, changes within $\pm 75K$
	STD	On	
	OPT		
WIRELESS	OFF	Off	
	2.4G	2.4G Wireless	
	433MHz	433MHz Wireless	
CHANNEL	1~32	Choose any figure from 1 to 32	
ID	OFF	Off	Wireless mode
	01-99	Choose any figure from 01 to 99	
SOCKET 1 GROUP SOCKET 2 GROUP	0~9/A,B,C,D,E,F	Choose one from 0~9/A,B,C,D,E,F	Choose group of socket 1 Choose group of socket 2
RECEIVER	OFF	Off	
	S1	S1 Mode	
	S2	S2 Mode	
MODEL	CONT	Always lighting	
	INTER	Off after finishing the flash recycle	
BACKLIGHT	-3~0~3	7 levels	

DELAY	OFF	Off	
	0.01~30s	Can be set as second-curtain sync	
UNITES	2 MASK		
	3 ALT		
	4 ALT		
1-ALT 2-ALT	OFF		
	1,2		
STEP	1.0-10	Display in the form of decimal	
	1/512-1/1	Display in the form of fraction	
MULTI	OFF	Off Multi Flash	
	ON	On Multi Flash	
RECYCLE	STD	Within 4 seconds in 110V standard recycling mode, within 2 seconds in 220V standard recycling mode	
	MAX	Within 2 seconds in 110V fastest recycling mode, within 1 second in 220V fastest recycling mode, and fastest up to 0.7s	
LANGUAGE	ENGLISH		
	Chinese(Simplified)		
RESET	NO		
	YES	Reset to default	
TIMES	16976	Record flash times	

## Sync Triggering

The Sync Cord Jack is a  $\Phi 3.5\text{mm}$  plug. Insert a trigger plug here and the flash will be fired synchronously with the camera shutter. To control the flash wirelessly, you need to insert the receive end of flash trigger into the Wireless Control Port on the flash and insert the transmit end into the

camera hot shoe. Settings made on the hotshoe-mounted transmit and receive ends will be wirelessly communicated to the flash. Then you can press the camera shutter release button to trigger the flash. You can also hold the transmit end at hand to control your off-camera flash. The Sync Cord Jack is a  $\Phi 3.5\text{mm}$  plug. Insert a trigger plug here and the flash will be fired synchronously with the camera shutter.



For full instructions on the use of flash trigger, see its user manual.

## Protection Function

### 1. Over-Temperature Protection

The inner over-temperature protection function may be activated when firing more than 200 continuous flashes in fast succession at 1/1 full power and <img alt="over-temperature icon" data-bbox="618 485 628 505"/> will be displayed. If gets a slower recycle time in firing, please allow a rest time of about 5 minutes, and the flash unit will then return to normal and the <img alt="over-temperature icon" data-bbox="688 535 698 555"/> will disappear.

### 2. Other Protections

The system provides real-time protection to secure the device and your safety. The following lists prompts for your reference:

Prompts on LCD Panel	Meaning
E1	A failure occurs on the recycling system so that the flash cannot fire. Please restart the flash unit. If the problem still exists, please send this product to a maintenance center.
E3	The voltage on two outlets of the flash tube is too high. Please send this product to a maintenance center.
E6	Flash fan failure
E9	There are some errors occurred during the upgrading process. Please using the correct firmware upgrades method.

## Technical Data

<b>Model</b>	<b>P2400</b>
Input	100-240V~ 50/60Hz 8A
Maxi. Power	2400Ws
Flash Duration	Max. ≈1/17800s
Power Adjustment	1.0-10(1/512-1/1)10 levels adjustable, and each level in 0.1 increments
Stable Color Temperature	Change within ±75K during the entire range
Flash Mode	Manual flash
	Multi flash
Stroboscopic Flash	Provided (up to 100 times, 100Hz)
Delay Flash	0.01~30 seconds
Mask	√
Fan	√
Beeper	√
Modeling Lamp(LED)Power	Single lamp holder 60W
Receiver	S1/S2 Secondary Unit Setting
Flash Duration Indication	√
Display	3.5 inch color screen
<b>2.4G Wireless Transmission</b>	
Wireless Function	Receiver, Off
Controllable Receive Groups	16 (0 ~ 9, A ~ F)
Transmission Range (approx.)	100m
Channels	32 (1~32)
Wireless ID	99 (01~99)
<b>433MHz Wireless Transmission</b>	
Wireless Function	Auxiliary, Off
Controllable Receive Groups	16 (0 ~ 9, A ~ F)
Transmission Range (approx.)	Approx.30m
Channels	32 (1~32)
<b>Power Supply</b>	

Power Supply	AC Power Supply
Recycle Time	fastest recycling time ≈ 0.7
Sync Triggering Mode	3.5mm sync line
Working environment temperature	-10°C~45°C
<b>Dimensions</b>	
Dimension	330*287*202mm
Net Weight	11kg

## Firmware Upgrade

This flash supports firmware upgrade through the Type-C port. Update information will be released on our official website.



USB connection line is not included in this product. As the USB port is a Type-C USB socket, please use the Type-C USB line.

- As the firmware upgrade needs the support of Godox G3 software, please download and install the "Godox G3 firmware upgrade software" before upgrading. Then, choose the related firmware file.
- As the products needs to do firmware upgrade, please refer to instruction manual of the newest electric version as final.

## Maintenance

- Shut down the device immediately should abnormal operation be detected.
- Avoid sudden impacts and the product should be dedusted regularly.
- Maintenance of the device must be performed by our authorized maintenance department which can provide original accessories.
- This product, except consumables e.g. flash tube, is supported with a one-year warranty.
- Unauthorized service will void the warranty.
- If the product had failures or was wetted, do not use it until it is repaired by professionals.
- Changes made to the specifications or designs may not be reflected in this manual.

## FCC Statement

This device complies with part 15 of the FCC Rules. Operation is subject to the following two conditions:

- (1) This device may not cause harmful interference, and
- (2) this device must accept any interference received, including interference that may cause undesired operation.

Note: This equipment has been tested and found to comply with the limits for a Class B digital device, pursuant to part 15 of the FCC Rules. These limits are designed to provide reasonable protection against harmful interference in a residential installation. This equipment generates uses and can radiate radio frequency energy and, if not installed and used in accordance with the instructions, may cause harmful interference to radio communications. However, there is no guarantee that interference will not occur in a particular installation. If this equipment does cause harmful interference to radio or television reception, which can be determined by turning the equipment off and on, the user is encouraged to try to correct the interference by one or more of the following measures:

- Reorient or relocate the receiving antenna.
- Increase the separation between the equipment and receiver.
- Connect the equipment into an outlet on a circuit different from that to which the receiver is connected.
- Consult the dealer or an experienced radio/TV technician for help.

## Warning

Operating frequency:433.05MHz – 434.79MHz /2412.99MHz – 2464.49MHz (only receive)

## Declaration of Conformity

GODOX Photo Equipment Co.,Ltd. hereby declares that this equipment are in compliance with the essential requirements and other relevant provisions of Directive 2014/53/EU. In accordance with Article 10(2) and Article 10(10), this product is allowed to be used in all EU member states. For more information of DoC, Please click this web link: <https://www.godox.com/eu-declaration-of-conformity/>  
The device complies with RF specifications when the device used at 0mm from your body.

## 产品保修

尊敬的用户，本保修卡是申请保修服务的重要凭证，请您配合销售商填写并妥善保管，谢谢！

产品信息	型号	产品条码
用户信息	姓名	联系电话
	通信地址	
销售商信息	名称	
	联系电话	
	通信地址	
	销售日期	
备注		

注：此表应由销售商盖章确认。

### 产品信息

本文件适用于相关《产品保修信息》(见后面说明)所列产品，其他非属此范围的产品或部件(如促销品、赠品及其他出厂后附加的部件等)不在此保修承诺内。

### 保修期

产品及部件的相应保修期按相关的《产品保修信息》执行。保修期自产品首次购买日起算，购买日以购买产品时保修卡登记日期为准。

### 如何获得保修服务

您可直接与产品销售商或授权服务机构联系，也可拨打神牛产品售后服务电话，与我们联系，由我们的服务人员为您安排服务。申请保修时，您应提供有效的保修卡作为保修凭证，方可获得保修。如您不能提供有效的保修卡，则在我们确认产品或部件属于保修范围的情况下，也可以为您提供保修，但这不作为我们的义务。

### 不适用保修的情况

如产品存在下列情况，本文件项下的保证和服务将不适用①产品或部件超过相应保修期；②错误或不当使用、维护或保管导致的故障或损坏，如：不当搬运；非按产品合理预期用途使用；不当插拔外接设备；跌落或外力挤压；接触或暴露于不适当温度、溶剂、酸碱、水浸或潮湿环境；③由非神牛授权机构或人员安装、修理、更改、添加或拆卸造成的故障或损坏；④产品或部件原有识别信息被修改变更或删除；⑤无有效保修卡；⑥使用非法授权、非标准或非公开发行的软件造成的故障或损坏；⑦因不可抗力或意外事件造成的故障或损坏；⑧其他非因产品本身质量问题导致的故障或损坏。遇上述情况，您应向相关责任方寻求解决，神牛对此不承担任何责任。因非在保修期或保修范围内的部件、附件或软件导致产品不能正常使用的，不是保修范围内的故障。产品使用过程中正常的脱色，磨损和消耗，不是保修范围内的故障。

### 产品保修和服务支持信息

产品的保修期和服务类型按以下《产品保修信息》执行：

产品类别	选件名称	保修期(月)	保修服务类型
部件	主机	12	客户送修
	电池	3	客户送修
	充电器等带电性能的部件。	12	客户送修
其他	如闪光灯管、造型灯泡、外壳、保护罩、锁紧装置、包装等。	无	无保修

神牛产品售后服务电话 0755-29609320-8062

# Warranty

Dear customers, as this warranty card is an important certificate to apply for our maintenance service, please fill in the following form in coordination with the seller and safe-keep it. Thank you!

<b>Product Information</b>	<b>Model</b>	<b>Product Code Number</b>
<b>Customer Information</b>	<b>Name</b>	<b>Contact Number</b>
	<b>Address</b>	
<b>Seller Information</b>	<b>Name</b>	
	<b>Contact Number</b>	
	<b>Address</b>	
	<b>Date of Sale</b>	
<b>Note</b>		

Note: This form shall be sealed by the seller.

## Applicable Products

The document applies to the products listed on the Product Maintenance Information (see below for further information). Other products or accessories (e.g. promotional items, giveaways and additional accessories attached, etc.) are not included in this warranty scope.

## Warranty Period

The warranty period of products and accessories is implemented according to the relevant Product Maintenance Information. The warranty period is calculated from the day (purchase date) when the product is bought for the first time, and the purchase date is considered as the date registered on the warranty card when buying the product.

## How to Get the Maintenance Service

If maintenance service is needed, you can directly contact the product distributor or authorized service institutions. You can also contact the Godox after-sale service call and we will offer you service. When applying for maintenance service, you should provide valid warranty card. If you cannot provide valid warranty card, we may offer you maintenance service once confirmed that the product or accessory is involved in the maintenance scope, but that shall not be considered as our obligation.

## Inapplicable Cases

The guarantee and service offered by this document are not applicable in the following cases: ①. The product or accessory has expired its warranty period; ②. Breakage or damage caused by inappropriate usage, maintenance or preservation, such as improper packing, improper usage, improper plugging in/out external equipment, falling off or squeezing by external force, contacting or exposing to the improper temperature, solvent, acid, base, flooding and damp environments, etc; ③. Breakage or damage caused by non-authorized institution or staff in the process of installation, maintenance, alternation, addition and detachment; ④. The original identifying information of product or accessory is modified, alternated, or removed; ⑤. No valid warranty card; ⑥. Breakage or damage caused by using illegally authorized, nonstandard or non-public released software; ⑦. Breakage or damage caused by force majeure or accident; ⑧. Breakage or damage that could not be attributed to the product itself. Once met these situations above, you should seek solutions from the related responsible parties and Godox assumes no responsibility. The damage caused by parts, accessories and software that beyond the warranty period or scope is not included in our maintenance scope. The normal discoloration, abrasion and consumption are not the breakage within the maintenance scope.

## Maintenance and Service Support Information

The warranty period and service types of products are implemented according to the following Product Maintenance Information:

Product Type	Name	Maintenance Period(month)	Warranty Service Type
Parts	Circuit Board	12	Customer sends the product to designated site
	Battery	3	Customer sends the product to designated site
	Electrical parts e.g. battery charger, etc.	12	Customer sends the product to designated site
Other Items	Flash tube, modeling lamp, lamp body, lamp cover, locking device, package, etc.	No	Without warranty

Godox After-sale Service Call 0755-29609320-8062