

Compact size 2.4G/BT Rechargeable Backlit Keyboard with Tablet and Phone Holder



Welcome to the X9 Performance family and thank you for purchasing the X9RBCPDKKEY.

Our mission is to deliver aesthetically pleasing, high-quality and affordable peripherals and accessories to satisfied customers. We do that by creating products that are both innovative and practical but most important easy-to-use.

If you have any questions, feedback, or just want to say hi, please reach out to us at techsupport@X9Performance.com.

With Love From Southern California,
X9 Performance

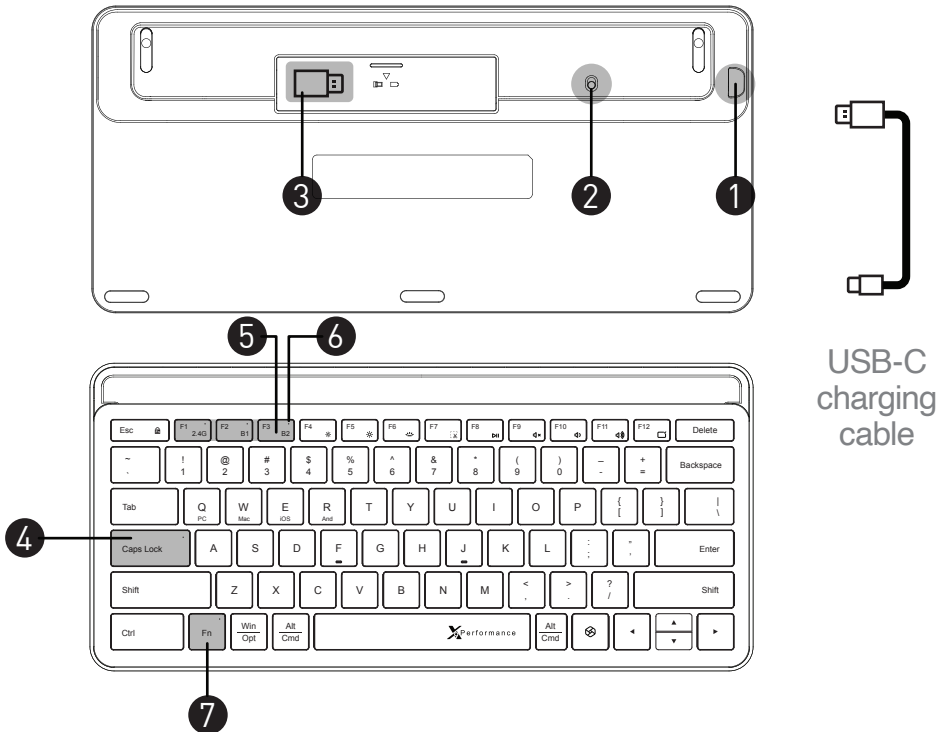
PACKAGE CONTENTS

- Keyboard
- RF dongle (located under the keyboard)
- USB-C charging Cable
- User's Guide

SYSTEM REQUIREMENTS

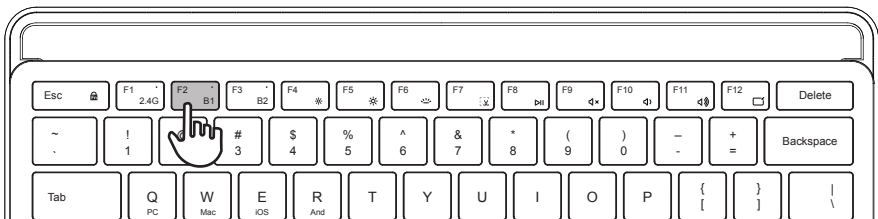
- BT-enabled computer, laptop, mobile phone, or tablet.
- Computer or laptop with a free USB-A port for wireless RF dongle usage.
- An available USB-A port or USB-A wall charger adapter for charging the keyboard.

HARDWARE BASICS



- 1.USB-C Charging Port
- 2.On/Off Switch
- 3.RF Dongle/Receiver Compartment
- 4.Caps Lock LED
 - a.Blue – Active
 - b.Off – Inactive
- 5.Connectivity Mode LEDs
 - a.RF
 - i.Blue – Connected
 - ii.Off – Disconnected
 - b.BT 1
 - i.Blue – Connected
 - ii.Off – Disconnected
 - c.BT 2
 - i.Blue – Connected
 - ii.Off – Disconnected
- 6.Charging LED (on B2)
 - a.Red – Low power
 - b.Blue – Charging
 - c.Off – Charged
- 7.Fn LED
 - a.Blue – Active
 - b.Off – Not Active

BT PAIRING INSTRUCTIONS



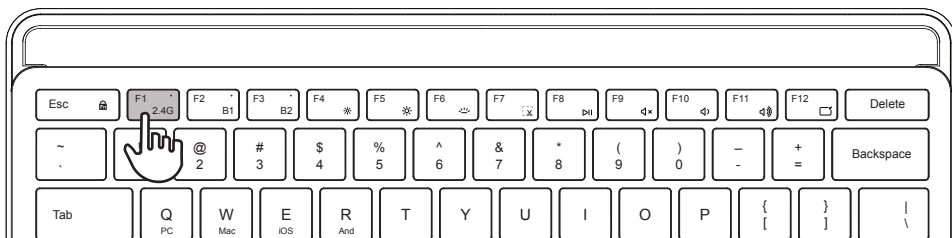
NOTE

We will use B1 as an example. You will need to do the same thing with B2, but just replace the “B1” key with the “B2” key.

To pair your keyboard to a BT-enabled device (Computer, Laptop, Phone, or Tablet), make sure the keyboard is on and charged, then follow the steps below.

1. Open the BT settings on the device you are pairing the keyboard to.
2. Press and hold the “B1” key located on the top right corner of the B1 key. The light should flash rapidly.
3. Click/tap on the X9RBCPKKEY to connect.

RF DONGLE/RECEIVER INSTRUCTION



1. Press 2.4G once to see the LED light flash.



2. Simply plug the RF Dongle/Receiver into your computer.
3. It should work automatically afterwards.
 - When the FN indicator light is on:
Press and hold FN + F1 to switch from Bluetooth to 2.4G wireless mode.
 - When the FN indicator light is off:
Simply press F1 to switch modes—no need to hold FN.

RF DONGLE/RECEIVER RESYNC INSTRUCTIONS

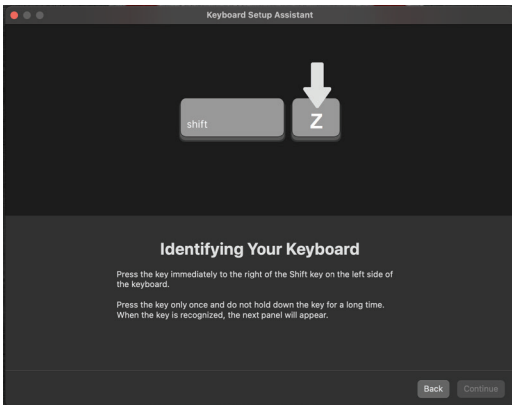
The following steps can be used in the event that you received a replacement RF Dongle/Receiver or if the keyboard was not synced prior to you receiving it.

1. Disconnect the RF Dongle/Receiver from your computer.
2. Press and hold the “Esc” key and the “+=” key for five seconds.
3. When you notice the Blue LED light on the 2.4G key is blinking rapidly, let go of the two keys and plug the RF Dongle/Receiver back into your computer.
4. Wait for the Blue LED light to flash slowly, indicating that it is paired. This should take 10 seconds.

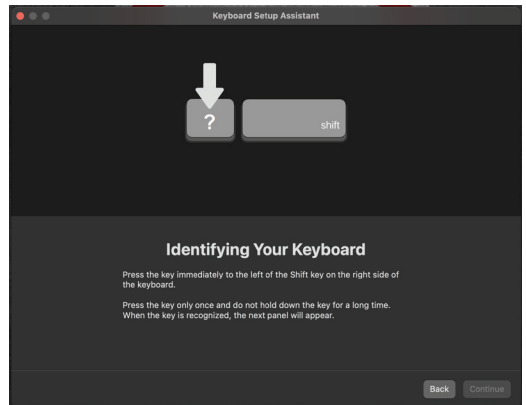
KEYBOARD SET UP ASSISTANT (For Mac Only)

Once pairing is done, a "keyboard setup assistance" screen may pop up asking you to help identify your new keyboard. This is a built in Apple procedure which helps the OS identify the current layout of your new key-board. When prompted simply do the following:

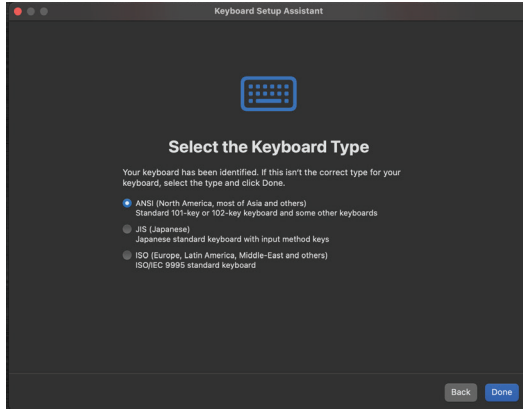
STEP1: Press the Z key



STEP2: Press the ? key



STEP2: Select your keyboard type (ANSI)



1. Press the “Z” key.
2. Press the “?” key.
3. Select ANSI, then click on Done.

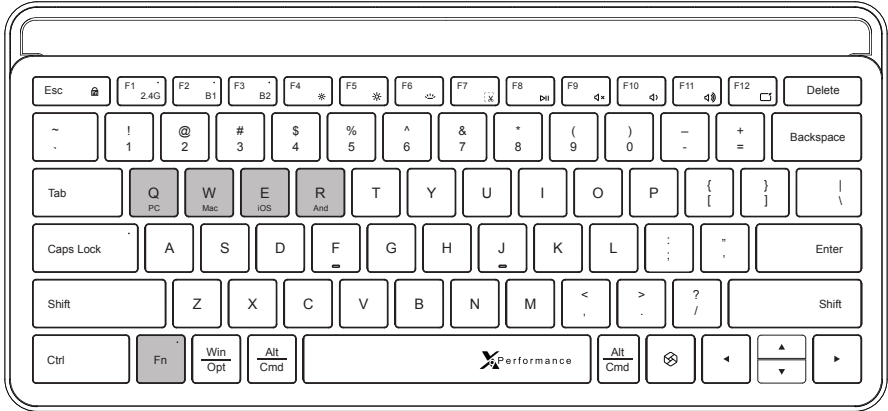
CHANGING THE OS

Please ensure that you press one of the four OS keys on your keyboard to make the keyboard function properly.

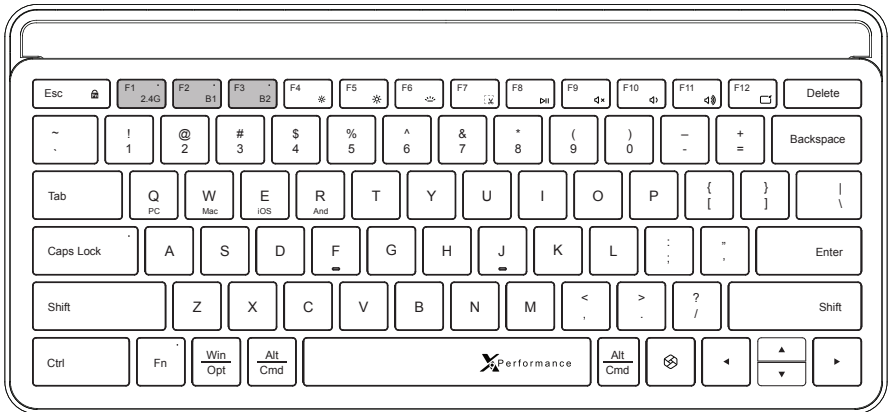
NOTE

This must be done after pairing the keyboard to a device or switching to a different OS. You will also need to hold the “Fn” key down before doing this.

| Shortcut For OS Change | What OS it changes into |
|------------------------|-------------------------|
| Fn+Q | Change OS to PC |
| Fn+W | Change OS to Mac |
| Fn+E | Change OS to iOS |
| Fn+R | Change OS to Android |



SWITCHING BETWEEN MULTIPLE DEVICES

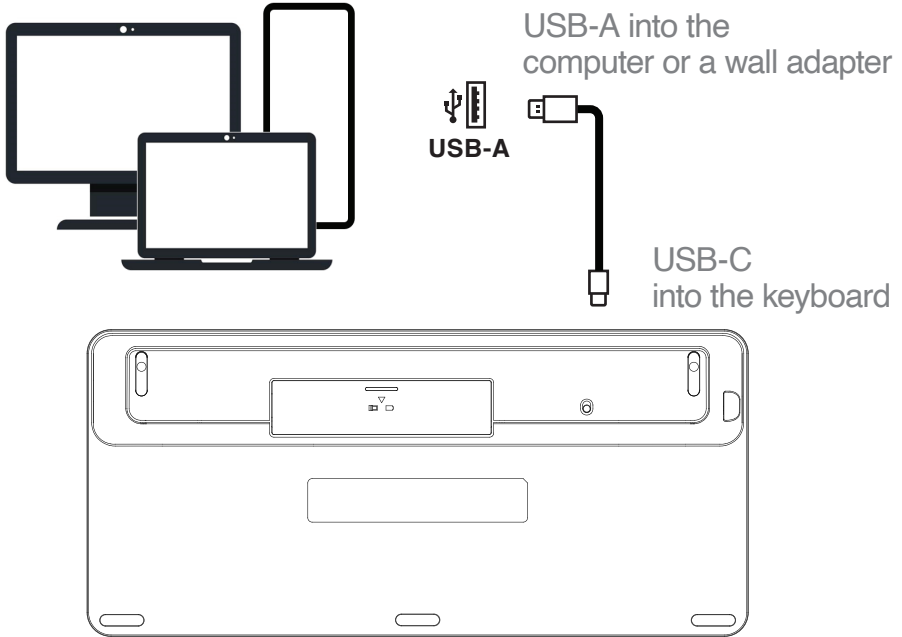


While holding Fn, press F1, F2, or F3 to change the RF or BT channels.

NOTE

If the Fn LED is off, you will just need to press F1, F2, or F3.

CHARGING THE KEYBOARD



Simply plug the USB-C end into the keyboard and plug the USB-A end into a wall adapter or a USB port.

LED Charging indicators (This LED is on the B2 Key).

- Flashing Red: Low battery
- Solid Blue: Charging
- Off: Fully charged (Unless B2 is in use)

NOTE

The cable is for charging purposes only. Please use the included cable, as it is the only one that can charge this keyboard.

TOP F-ROW SHORTCUTS











The keyboards top F-row is defaulted to boot up under function mode. To utilize a shortcut simply hold the FN key followed by the shortcut you want to perform.

NOTE

You can switch the F-row from function to shortcuts at any time by pressing fn+esc. When switched, you can still utilize the function keys by holding down the fn key followed by the function key (F1-F12) you would like to execute.

Below is a table of what each shortcut does.

Shortcut description

| | |
|---|--|
| Esc  | Switches the keyboard from shortcut mode to function mode as described in the above note. |
| 2.4G | 2.4 G (RF Connection) |
| B1 | B1 (BT 1 Connection) |
| B2 | B2 (BT 2 Connection) |
|  | Decrease the brightness on the monitor (Does not apply to all monitors) |
|  | Increase the brightness on the monitor (Does not apply to all monitors) |
|  | Keyboard Backlight |
|  | PC: Cadet Browsing (on any web browser) MAC: Screen Shot (You can choose which area to screen shot) |
|  | Play/Pause |
|  | Mute |
|  | Volume down |
|  | Volume up |
|  | PC: Minimize all Windows MAC: Minimize the Window that is selected. |

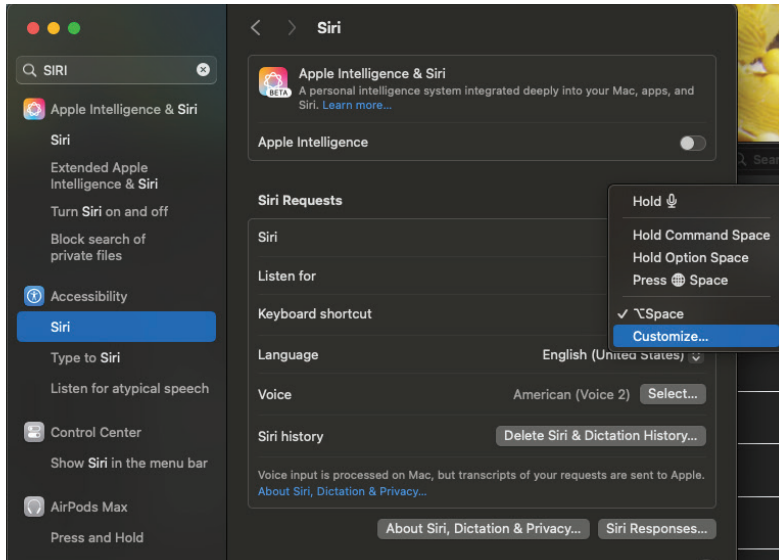
NOTE

All standard function keys (F1-F12) have a special function defined by the operating system, or by a currently running program.

HOW TO MAKE SIRI WORK (MAC ONLY)

To activate Siri for the key located on the right side of the Alt/Cmd key, follow the steps below.

1. Go to settings, then type Siri in the search bar.
2. Once you see the Siri settings, click on Siri Settings



3. Click on the Siri settings button on the bottom right, then choose Customize and press the key on the right side of the (Alt Key) Key.

SAFETY INSTRUCTIONS

Please read the following carefully. Incorrect use of this product may result in reduced performance, permanent damage and void your warranty.

- Keep this device away from liquid, humidity and moisture.
- Operate this device only within the specific temperature range of 0°C (32° F) to 5°C to 40°C (104° F)
- Please refrain from taking the device apart. Doing so will void your warranty.
- Do not dispose this product in the garbage. Take it to your local recycling center.

SPECIFICATIONS

| | |
|--------------------------|-------------|
| Number of keys | 78 |
| Switches | Scissor-key |
| Keycap brightness levels | 3 |
| BT Version | 5.0 |
| Battery size | 1800mAh |

Tech support

Tech support hours are from 9:00 AM to 5:00 PM Monday through Friday (PST).

- E-Mail: techsupport@macally.com
- Phone: (909) 230-6788

FCC STATEMENT

This device complies with part 15 of the FCC Rules. Operation is subject to the following two conditions: (1) This device may not cause harmful interference, and (2) this device must accept any interference received, including interference that may cause undesired operation.

Any Changes or modifications not expressly approved by the party responsible for compliance could void the user's authority to operate the equipment.

Note: *This equipment has been tested and found to comply with the limits for a Class B digital device, pursuant to part 15 of the FCC Rules. These limits are designed to provide reasonable protection against harmful interference in a residential installation. This equipment generates uses and can radiate radio frequency energy and, if not installed and used in accordance with the instructions, may cause harmful interference to radio communications. However, there is no guarantee that interference will not occur in a particular installation. If this equipment does cause harmful interference to radio or television reception, which can be determined by turning the equipment off and on, the user is encouraged to try to correct the interference by one or more of the following measures: .*

- Reorient or relocate the receiving antenna.*
- Increase the separation between the equipment and receiver.*
- Connect the equipment into an outlet on a circuit different from that to which the receiver is connected.*
- Consult the dealer or an experienced radio/TV technician for help.*

The device has been evaluated to meet general RF exposure requirement. The device can be used in portable exposure condition without restriction.

Warranty

X9 Performance warrants that this product will be free from defects in title, materials and manufacturing workmanship for one year in North America from the date of the purchase. If the product is found to be defective then, as your sole remedy and as the manufacturer's only obligation, X9 Performance will repair or replace the product. This warranty is exclusive and is limited to the product that this user's guide came with. This warranty shall not apply to products that have been subjected to abuse, misuse, abnormal electrical or environmental conditions, or any condition other than what can be considered normal use. The liability of X9 Performance arising from this warranty and sale shall be limited to a refund of the purchase price. In no event shall X9 Performance be liable for costs of procurement of substitute products or services, or for any lost profits, or for any consequential, incidental, direct or indirect damages, however caused and on any theory of liability, arising from this warranty and sale. These limitations shall apply notwithstanding any failure of essential purpose of any limited remedy.