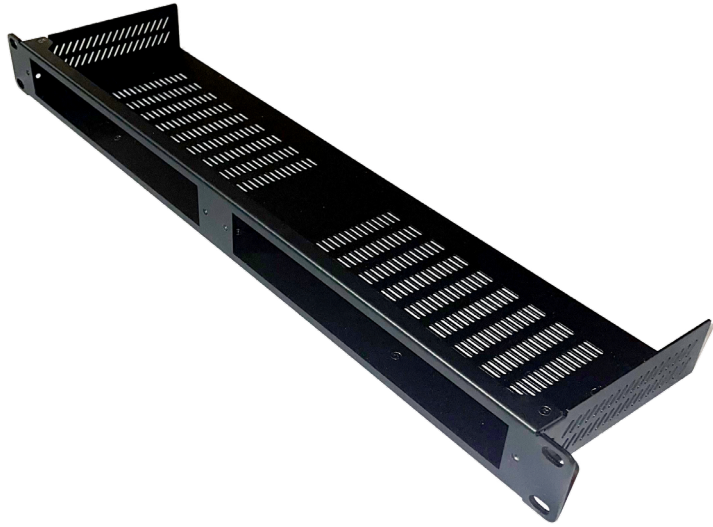




HW-LUMA-1RU-2S HW-LUMA-E4-RACK HW-LUMA-D4-RACK Installation Guide

LumaStream Encoder and Decoder Rack Shelf



Description

The Atlona **HW-RACK-1RU-2S**, **HW-LUMA-E4-RACK**, and **HW-LUMA-D4-RACK** are accessories for simple installation of **LumaStream™** encoders and decoders into an equipment rack. The RACK-1RU-2S is a 1U, full rack width shelf with openings for two LumaStream units. The LUMA-E4-RACK is an adapter plate for mounting the HW-LUMA-E4211 encoder to the front face of RACK-1RU-2S, while the LUMA-D4-RACK adapter plate is for the HW-LUMA-D4111 decoder. Installation begins with installing the RACK-1RU-2S on its own to the equipment rack. With the adapter plate attached, a LumaStream unit can then be secured onto the front face of the RACK-1RU-2S with pre-attached captive screws. Installation can be performed entirely from the front of the equipment rack, making this ideal for high-density systems spanning multiple rack units.

Package Contents | HW-RACK-1RU-2S

- 1 x 1RU Rack Shelf
- 1 x Blank Faceplate
- 2 x Easy Screws
- 1 x QR Card

Package Contents | HW-LUMA-E4-RACK

- 1 x LUMA Decoder Faceplate
- 2 x Easy Screws
- 4 x Rubber Feet
- 8 x Screws
- 1 x QR Card

Package Contents | HW-LUMA-D4-RACK

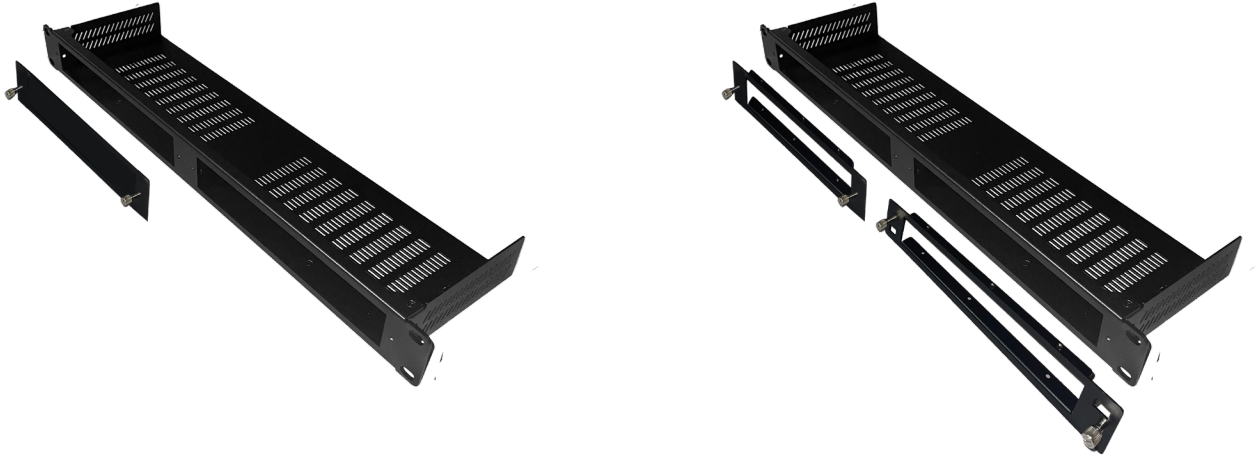
- 1 x LUMA Encoder Faceplate
- 2 x Easy Screws
- 4 x Rubber Feet
- 8 x Screws
- 1 x QR Card



IMPORTANT: Visit <http://www.hallresearch.com/product/HW-RACK-1RU-2S> for additional information.

Mounting Instructions

1. Place the rack on a flat surface.



2. Attach the E4 or D4 Rack faceplate to the correct LumaStream device. Secure with the screws included into the hole on the bottom of the device at the front of the unit.



3. Attach the rail to the device at the back to allow for cables to be secured.



NOTE: Do not overtighten the screws. The screws will hold the unit in place to avoid it moving back and forth while connecting cables or pressing the front buttons.

NOTE: If there is any vertical movement from the devices, the included rubber feet can be affixed to the bottom of the devices.

Copyright, Trademark, and Registration

© 2026 Hall Research. All rights reserved. "Atlona" and the Atlona logo are registered trademarks of Hall Research. Pricing, specifications and availability subject to change without notice. Actual products, product images, and online product images may vary from images shown here.