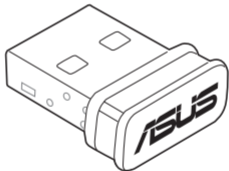


# **USB-BT600**

## **Bluetooth 6.0 USB Adapter**



## **Quick Start Guide**

# Contents

Hardware Installation.....	3
Driver Installation.....	4
Ensure that you have turned on Bluetooth in Windows® .....	5
Notices.....	9

This QSG contains these languages:

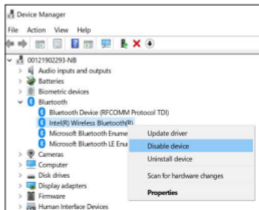
English  
Français Canadien  
Español

## 1. Hardware Installation

Insert USB-BT600 into the USB Type A port of your device.



**NOTE:** In order to successfully install USB-BT600 on a laptop or desktop which has a built-in Bluetooth module, ensure to go to Windows Device Manager and disable the built-in Bluetooth before installing USB-BT600.



## 2. Driver Installation

Download and install the latest driver from ASUS official website at [https://www.asus.com/Networking/USB-BT600/HelpDesk\\_Download/](https://www.asus.com/Networking/USB-BT600/HelpDesk_Download/)

### Driver & Utility

Please select OS

EXPAND ALL + COLLAPSE ALL -

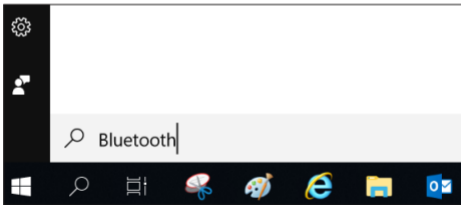
#### Utilities

<b>Version 1.0.0.2</b> 2019/08/30	<b>92.36 MBytes</b>	<a href="#">DOWNLOAD</a>
ASUS USB-BT500 Driver 1.0.0.2 for Windows Support OS: Windows 7/8/8.1/10 (32&64 bits)		

**NOTE:** If you are using Windows® 11 and connected to the internet, the system will detect the driver automatically. Follow the instructions to download and install the latest driver.

### 3. Ensure that you have turned on Bluetooth in Windows®

Search for “Bluetooth” in Windows® Search box to open the Bluetooth settings panel. Ensure that you have turned on Bluetooth and applied adequate settings.



## 1. Installation du matériel

Insérez le dongle USB-BT600 dans le port USB Type-A de votre appareil.

**REMARQUE :** Afin d'installer correctement le module USB-BT600 sur un ordinateur portable ou un ordinateur de bureau disposant d'un module Bluetooth intégré, rendez-vous tout d'abord dans le Gestionnaire de périphériques de Windows et désactivez le Bluetooth intégré.

## 2. Installer le pilote

Téléchargez et installez le pilote depuis le site officiel ASUS : <https://www.asus.com/Networking/USB-BT600/HelpDesk/Download/>

**REMARQUE :** Si vous utilisez Windows® 11 et êtes connecté à internet, le système détectera automatiquement le pilote. Suivez les instructions pour télécharger et installer le pilote le plus récent.

## 3. Assurez-vous d'avoir activé la fonction Bluetooth dans Windows®

Recherchez le terme "Bluetooth" dans le champ de recherche de Windows® pour ouvrir le panneau de configuration Bluetooth. Assurez-vous d'avoir activé le Bluetooth et d'avoir appliqué les paramètres adéquats.

## 1. Instalación del hardware

Inserte su USB-BT600 en el puerto USB Tipo A del dispositivo.

**NOTA:** Para instalar correctamente su USB-BT600 en un equipo portátil o de sobremesa que tenga un módulo Bluetooth incorporado, asegúrese de ir al Administrador de dispositivos de Windows y deshabilitar la funcionalidad Bluetooth incorporada antes de instalar su USB-BT600.

## 2. Instalación del controlador

Descargue e instale el controlador más reciente desde el sitio web oficial de ASUS: [https://www.asus.com/Networking/USB-BT600/HelpDesk\\_Download/](https://www.asus.com/Networking/USB-BT600/HelpDesk_Download/)

**NOTA:** Si está utilizando Windows® 11 y está conectado a Internet, el sistema detectará el controlador automáticamente. Siga las instrucciones para descargar e instalar el controlador más reciente.

## 3. Asegúrese de que ha activado la funcionalidad Bluetooth en Windows®

Buscar "Bluetooth" en Windows® Cuadro de búsqueda para abrir el panel de configuración de Bluetooth. Asegúrese de que ha activado la funcionalidad Bluetooth y ha aplicado la configuración adecuada.

# Notices

## ASUS Recycling/Takeback Services

ASUS recycling and takeback programs come from our commitment to the highest standards for protecting our environment. We believe in providing solutions for you to be able to responsibly recycle our products, batteries, other components, as well as the packaging materials. Please go to <https://esg.asus.com/en/Takeback.htm> for the detailed recycling information in different regions.

## REACH

Complying with the REACH (Registration, Evaluation, Authorisation, and Restriction of Chemicals) regulatory framework, we published the chemical substances in our products at ASUS REACH website at <https://esg.asus.com/Compliance.htm>.

## Federal Communications Commission Statement

This device complies with Part 15 of the FCC Rules. Operation is subject to the following two conditions:

- This device may not cause harmful interference.
- This device must accept any interference received, including interference that may cause undesired operation.

This equipment has been tested and found to comply with the limits for a class B digital device, pursuant to Part 15 of the FCC Rules. These limits are designed to provide reasonable protection against harmful interference in a residential installation.

This equipment generates, uses and can radiate radio frequency energy and, if not installed and used in accordance with the instructions, may cause harmful interference to radio communications. However, there is no guarantee that interference will not occur in a particular installation. If this equipment does cause harmful interference to radio or television reception, which can be determined by turning the equipment off and on, the user is encouraged to try to correct the interference by one or more of the following measures:

- Reorient or relocate the receiving antenna.
- Increase the separation between the equipment and receiver.

- Connect the equipment into an outlet on a circuit different from that to which the receiver is connected.
- Consult the dealer or an experienced radio/TV technician for help.



---

**CAUTION:** Any changes or modifications not expressly approved by the party responsible for compliance could void the user's authority to operate the equipment.

---

### **Prohibition of Co-location**

This transmitter must not be co-located or operating in conjunction with any other antenna or transmitter.

### **FCC Radiation Exposure Statement**

This equipment complies with FCC radiation exposure limits set forth for an uncontrolled environment. End users must follow the specific operating instructions for satisfying RF exposure compliance. To maintain compliance with FCC exposure compliance requirement, please follow operation instruction as documented in this manual.



---

**WARNING!** This equipment must be installed and operated in accordance with provided instructions and the antenna(s) used for this transmitter must be installed to provide a separation distance of at least 20 cm from all persons and must not be co-located or operating in conjunction with any other antenna or transmitter.

---

### **Compliance Statement of Innovation, Science and Economic Development Canada (ISED)**

This device complies with Innovation, Science and Economic Development Canada licence exempt RSS standard(s). Operation is subject to the following two conditions: (1) this device may not cause interference, and (2) this device must accept any interference, including interference that may cause undesired operation of the device.

CAN ICES (B)/NMB (B)

---

## **Déclaration de conformité de Innovation, Sciences et Développement économique Canada (ISED)**

Le présent appareil est conforme aux CNR d'Innovation, Sciences et Développement économique Canada applicables aux appareils radio exempts de licence. L'exploitation est autorisée aux deux conditions suivantes : (1) l'appareil ne doit pas produire de brouillage, et (2) l'utilisateur de l'appareil doit accepter tout brouillage radioélectrique subi, même si le brouillage est susceptible d'en compromettre le fonctionnement.

CAN ICES (B)/NMB (B)

### **Radiation Exposure Statement:**

The product comply with the Canada portable RF exposure limit set forth for an uncontrolled environment and are safe for intended operation as described in this manual. The further RF exposure reduction can be achieved if the product can be kept as far as possible from the user body or set the device to lower output power if such function is available.

### **Déclaration d'exposition aux radiations:**

Le produit est conforme aux limites d'exposition pour les appareils portables RF pour les Etats-Unis et le Canada établies pour un environnement non contrôlé.

Le produit est sûr pour un fonctionnement tel que décrit dans ce manuel. La réduction aux expositions RF peut être augmentée si l'appareil peut être conservé aussi loin que possible du corps de l'utilisateur ou que le dispositif est réglé sur la puissance de sortie la plus faible si une telle fonction est disponible.

### **Radio Frequency (RF) Exposure Information**

The radiated output power of the ASUS Wireless Device is below the Innovation, Science and Economic Development Canada radio frequency exposure limits. The ASUS Wireless Device should be used in such a manner such that the potential for human contact during normal operation is minimized.

This equipment should be installed and operated with a minimum distance of 20 cm between the radiator any part of your body.

This device has been certified for use in Canada. Status of the listing in the Innovation, Science and Economic Development Canada's REL (Radio Equipment List) can be found at the following web address: [http://www.ic.gc.ca/eic/site/ceb-bhst.nsf/eng/h\\_tt00020.html](http://www.ic.gc.ca/eic/site/ceb-bhst.nsf/eng/h_tt00020.html)

Additional Canadian information on RF exposure also can be found at the following web: <https://www.ic.gc.ca/eic/site/smt-gst.nsf/eng/sf08792.html>

### **Informations concernant l'exposition aux fréquences radio (RF)**

La puissance de sortie émise par cet appareil sans fil est inférieure à la limite d'exposition aux fréquences radio d'Industrie Canada (IC). Utilisez l'appareil sans fil de façon à minimiser les contacts humains lors d'un fonctionnement normal.

Cet appareil a été évalué et démontré conforme aux limites de DAS (Débit d'absorption spécifique) d'IC lorsqu'il est installé dans des produits hôtes particuliers qui fonctionnent dans des conditions d'exposition à des appareils portables (Les antennes doivent être situées à plus de 20 cm de votre corps).

L'utilisation de cet appareil est autorisée au Canada. Pour consulter l'entrée correspondant à l'appareil dans la liste d'équipement radio (REL - Radio Equipment List) d'Industrie Canada, rendez-vous sur: <http://www.ic.gc.ca/app/sitt/reltel/srch/nwRdSrch.do?lang=eng>

Pour des informations supplémentaires concernant l'exposition aux fréquences radio au Canada, rendez-vous sur: <http://www.ic.gc.ca/eic/site/smt-gst.nsf/eng/sf08792.html>



Rating: 5 Vdc, 0.5 A

## [English] CE statement

### Simplified EU Declaration of Conformity

ASUSTek Computer Inc. hereby declares that this device is in compliance with the essential requirements and other relevant provisions of Directive 2014/53/EU. Full text of EU declaration of conformity is available at [https://www.asus.com/Networking/USB-BT600/HelpDesk\\_Declaration/](https://www.asus.com/Networking/USB-BT600/HelpDesk_Declaration/).

The frequency, mode and the maximum transmitted power in EU are listed below:

2402-2480MHz(BT EDR): 9.90dBm

2402-2480MHz(BT LE): 9.70dBm

### Safety Notices

- Use this product in environments with ambient temperatures between 0°C(32°F) and 40°C(104°F).
- DO NOT expose to or use near liquids, rain, or moisture.

## Service and Support



<https://www.asus.com/support>