



User manual

Model: H200

support@lemorele.com

Preface

The H200 is an efficient and practical USB-C KVM switch, enabling seamless signal switching between two devices. Ideal for home entertainment, conference presentations, and esports gaming, it supports 4K@60Hz ultra HD video and audio transmission, delivering stunningly smooth visuals and immersive sound.

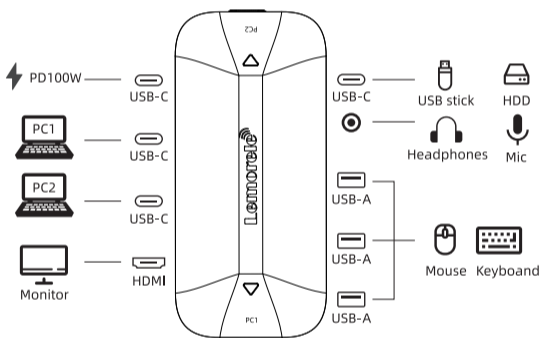
Technical Specifications

Product Name: USB-C KVM Switch
Model: H200
Switching Method: Physical button

Resolution: Supports up to 4K@60Hz
Material: ABS
Product dimensions: 110x51x15.8mm

Interfaces: HOST port x2; HDMI input x1; USB-A 2.0 x3; USB-C 2.0 x1; USB-C (PD 100W) x1; 3.5mm Audio/MIC jack x1

Connection Diagram



Steps for Use

1. Signal Source Connection Steps

Connect laptop to the switcher
Use USB-C cables to connect the signal sources (laptop, game console) to the switcher's PC1 and PC2 ports respectively.

2. Connect Display to Switcher

Use HDMI cable to connect the display's HDMI input port to the switcher's HDMI output port.

3. Connect Keyboard/Mouse to Switcher

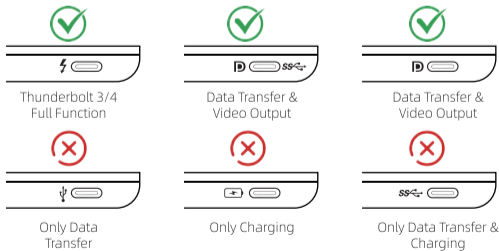
Insert the USB receiver or cable of keyboard and mouse into the switcher's USB-A port.

4. Switching and Using Signal Sources

Toggle the physical button on the switcher to switch to the corresponding signal source:
After switching, the display screen, keyboard, and mouse control will synchronously switch to the target signal source.

Precautions

When using laptops, gaming handhelds or media players as signal sources, ensure the device's Type-C port supports audio/video output functionality. Compatible ports are typically marked with DisplayPort (DP) logos or corresponding certification marks, as shown below:



FAQ

Q: No HDMI video output

A: For HDMI output to a display, the USB-C cable must support DisplayPort Alt Mode or Thunderbolt.

Q: No HDMI audio output

A: Ensure your device supports DisplayPort Alt Mode for HDMI output.

Q: What resolutions does this switcher support?

A: Supports up to 4K@60Hz resolution, with backward compatibility for 2K/1080P and lower resolutions.

Q: Why is there no video output from Nintendo Switch?

A: Ensure you're using a 45W PD or higher adapter to power the Switch for video output.

Q: Can't power devices through USB-C KVM Switch?

A: Always use the original adapter to power the USB-C KVM Switch, or use a 45W PD or higher adapter.

Customer Service Support

If you need assistance, you can contact us at any time by following these steps:

1. Log in to your account and go to "Your Orders."
2. Select "Order Issues" next to the problematic order.
3. Send us a message via "Contact Seller."
4. If you encounter issues during use, please contact technical support at support@lemorele.com for further assistance.