



# Oben™

## MFR4-5

Macro Focusing Rail 4-Way



You're on steady ground™

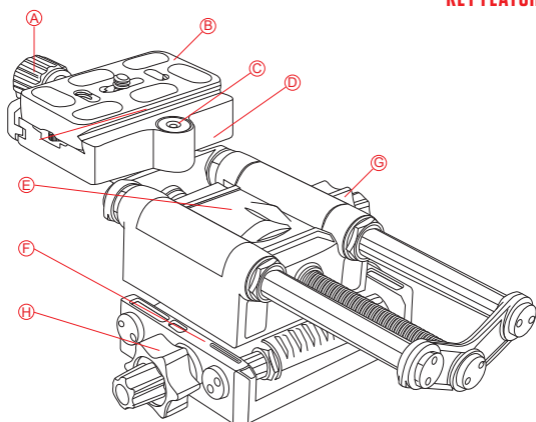
# Thank You for choosing Oben!

The Oben MFR4-5 is a macro focusing rail designed for precise camera-to-subject focusing ideal for macro photography or exacting close-up work. The two stages of the focusing rail provide fine control on two axes: left-to-right and front-to-back.

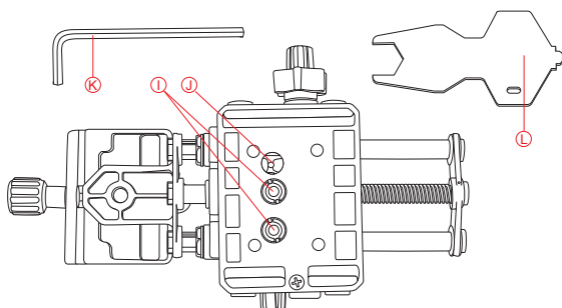
This macro focusing rail is compatible with any camera that has a 1/4"-20 threaded socket as well as cameras with a 3/8" threaded socket when using a 3/8"-1/4"-20 bushing. An integrated Arca-type quick-release plate provides an easy and secure attachment to most cameras. The lightweight MFR4-5 mounts onto most tripods with either a 3/8" or 1/4"-20 threaded stud. If only front-to-back focusing is needed, the top and bottom stages can be easily separated with the included Allen key.

The MFR4-5 features all-aluminum construction for durability and two-level adjustment knobs for precise focusing control. Extra security for your camera is provided by textured rubber pads on the quick release plate.

<b>Key Features</b>	<b>3</b>
<b>Operation</b>	<b>4</b>
<b>Mount the Rail on a Tripod</b>	<b>4</b>
<b>Mount a camera onto the Rail</b>	<b>5</b>
<b>Operating the MFR4-5</b>	<b>6</b>
<b>Specifications</b>	<b>7</b>
<b>Warnings</b>	<b>7</b>



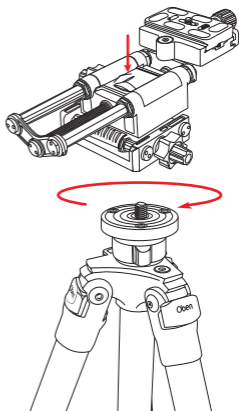
- (A) Quick-release knob
- (B) Quick-release plate
- (C) Bubble Level
- (D) Quick-release plate platform
- (E) Front-back axis stage
- (F) Side-to-side axis stage
- (G) Front-back adjustment knob
- (H) Side-to-side adjustment knob
- (I) Threaded mounting holes with 3/8" - 1/4"-20 bushing
- (J) Unthreaded hole
- (K) Allen key
- (L) Wrench



### 1. Mount Rail to Tripod

1. If the tripod has a 1/4"-20 mounting stud, proceed to step 2. If the tripod has a 3/8" mounting stud, use the included wrench to remove the reducer bushing from one of the sockets on the bottom of the focusing rail.
2. Align the mounting socket of the focusing rail with the mounting stud of the tripod. Be careful to hold it straight over the stud.
3. Screw the focusing rail onto the tripod by turning it clockwise onto the stud until it's seated tightly against the tripod platform. Make sure there are no gaps between the base and the tripod.

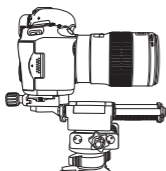
**Important:** If your tripod has set screws on the platform, tighten them to secure the focusing rail to the tripod.



## 2. Mount Camera onto Rail

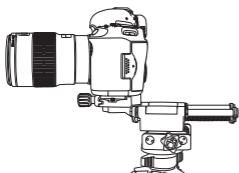
The Arca-type quick-release plate has a 1/4"-20 mounting screw that attaches to most cameras.

**Note:** If your camera has a 3/8" mounting socket, use a 3/8"-1/4"-20 reducer bushing to securely mount the camera to the focusing rail.



1. Loosen the quick release knob and remove the quick release plate from the plate platform.

2. Mount the camera onto the quick-release plate by tightening the plate's screw to the camera by using the wrench (included), a coin, or the attached D-ring.



3. Place the camera and quick-release plate into the grooves of the plate platform.

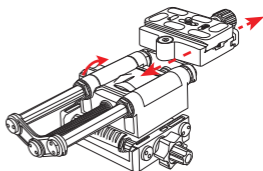
4. To ensure proper balance, mount the camera so that it's facing inward and the lens extends over the rails.

5. For closer placement to your subject, the camera can be mounted facing out, away from the rails.

6. Securely tighten the release plate lock. Make sure the quick-release plate is seated properly in the plate platform and the quick-release knob is securely tightened

## 3. Operating the MFR4-5

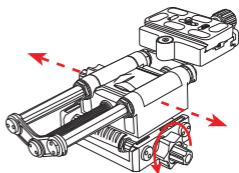
1. Depth adjustment: From behind the camera, turning the knob on one side will move the camera from front to back and back to front.
2. Sideways adjustment: Turning the knob on the other side will move the camera side to side.



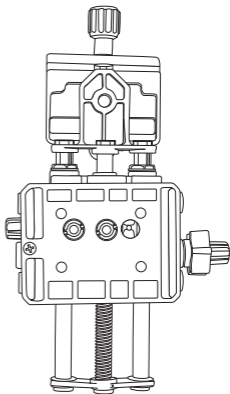
### **Removing the bottom stage of the MFR4-5**

If only depth (back-to-front and front-to-back) focusing is necessary, the bottom stage of the focusing rail can be removed.

**Caution:** Remove your camera from the focusing rail before performing this operation.



1. Unscrew the focusing rail from the tripod and turn it upside down.
2. Using the side-to-side adjustment knob, slide the stage to the side where the hexagonal socket is visible through the unthreaded hole.
3. Insert the Allen key into the socket and turn it counterclockwise.
4. When the bolt is sufficiently loosened, the bottom stage will detach. The front-to-back axis stage is designed with threaded mounting holes.
5. Screw the focusing rail back onto the tripod using the appropriate threaded hole depending on the size of the tripod's mounting stud.



Dimensions (H × W × D)	3" × 4.75" × 9" (8 × 12 × 23 cm)
Weight	1.3 lb. (0.59 kg)
Base Width	4.75" (12 cm)
Front-back range	2.75" (7 cm)
Side-side range	1.25" (3.2 cm)

**Warnings:**

- *Please read and follow these instructions, and keep this manual in a safe place.*
- *Do not attempt to attach the focusing rail to a tripod with the camera attached.*
- *Remove the camera and lens from the focusing rail during setup or transport.*

Visit our website at **ObenSupports.com**  
for more Oben products.



© Copyright 2016 The Gratus Group  
All other trademarks are the property of their respective owners.