



Instruction manual

MP1827-2 / MP1847-2

Warning:

1. Do not use the unit in places that are extremely hot, cold, dusty, or humid.
2. Avoid dropping unit.
3. The battery service life may differ under different usage conditions and different models
4. The unit charges when connected to PC via USB cable no matter if the power is on or off.
5. Please charge the unit when any of the following cases occur:
 - A. The battery indicator shows low battery
 - B. The player turns off automatically, and turns off again after rebooting.
 - C. The keys become inactive
 - D. Can't turn on the player.
6. Do not disconnect the player while it is formatting or uploading/downloading, or the procedures may lead to errors
7. Do not disassemble. Any doubt please contacts the dealer.
8. Specifications are subject to change and improvement without notice
9. While formatting the player, please select the file system as FAT32.

Features:

1.8” 65K Color Display

MP3/WMA/WAV Playback

MPEG-4 (AVI) Movie Playback

FM Tuner, Store 20 Stations (Optional)

Support JPEG Format Picture Viewing

High Quality Voice Recording

A-B repeat function

Support 3D Sound

Several EQ Modes

ID3 TAG Support (title, artist, and lyrics –edited in advance)

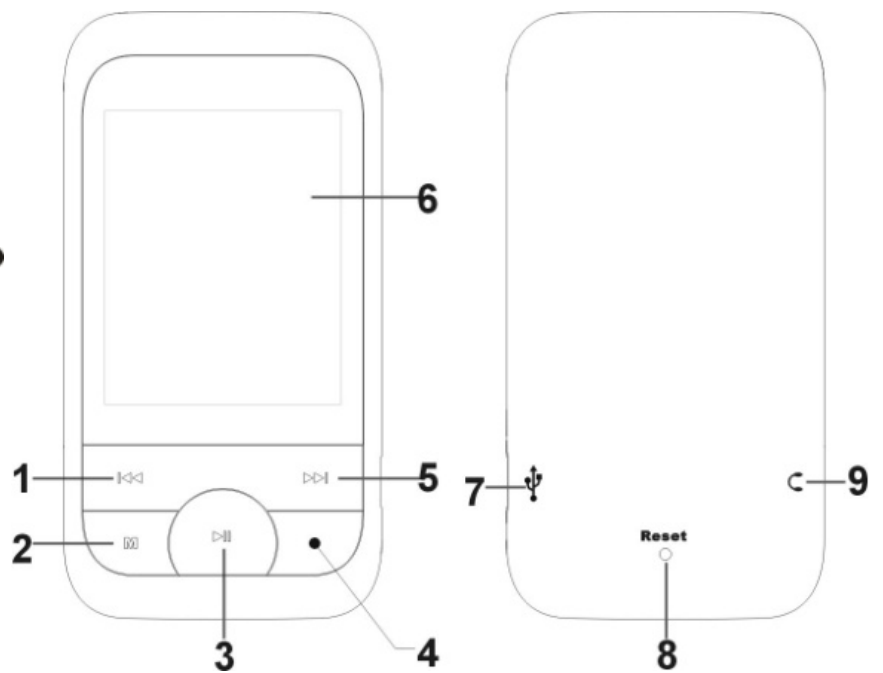
Built-in Rechargeable Lithium-ion Battery

USB 2.0

Getting to know your player:

Buttons and Controls

- 1) Previous/REW ⏮
- 2) “M” Menu (Enter/Confirm)
- 3) Play/Pause/Power On/Off ▶||
- 4) REC Button/A-B repeat/Back ●
- 5) Next/Fast Forward ⏭
- 6) Display
- 7) USB Jack
- 8) RESET
- 9) Earphone jack



1 .Basic operation

1). Power on/off

A). To power on: Press and Hold “▶||” button to turn the unit on, and LCD displays the logo picture. Then the unit enters the main menu.

B). To power off: Press and hold “▶||” button, the player turn off.

2). Charging

A) Plug the charger to the power source, and connect it to the USB port of the player. The player will charge no matter if the power is on or off.

B) By connecting with PC: link the unit to the computer via USB cable, the player enters U-disk mode automatically. Exit the U-disk mode, the player will then enter charging mode.

Note: For safety, the charging time should not exceed 8 hours. And since the longevity of the battery bases on the charging times, please charges the battery after it is exhausted, and please charge it fully once.

3) Buttons

In the main menu, press “◀◀” or “▶▶” to select the menu you want and press “M” button

to enter it. To exit to the main menu, press and hold “M”.

4). FM tuner

The earphone acts as the antenna while listening to the FM stations. Please plug the earphone first if you want to listen to FM.

2. Music Playback

1). Playback

Select “Music” in the main menu, and press “M” button to enter, the player sorts the tracks automatically by Album, Artist and Genre

2). Buttons

A). Press “◀◀” or “▶▶” to choose bet. Album, Artist and Genre, then press “M”

B). Press “◀◀” or “▶▶” to select audio files, then press “M”

C). Press “▶||” button to start playback.

D). Press and hold “M” button to return to the main menu

.

3). Volume Adjustment



While playing, press and hold “▶▶” to increase the volume or “◀◀” to decrease the volume.

4). Pause

Press “▶||” button to pause playback. Press “▶||” button again, to continue to play.

5). Previous file/Next file; FF/RW

Press “▶▶” button to skip to the next file or press “◀◀” button to skip to the previous file.

When paused, press and hold “◀◀” or “▶▶” to FF or RW.

6). Play list

Press “M” button to enter the play list. Press “◀◀” or “▶▶” to select files and press “M” button to enter and start playback.

7). Output EQ Mode Setting:

Press and hold “M” button to return to the main menu. Select Settings press “M” button, select Music press “M” button and select EQ Select press “M” button. EQ includes 7 modes: normal, MS PlayFX, Rock, Pop, Classic, Bass and Jazz. You can change those modes by pressing “◀◀” or “▶▶” button. Finally press “M” button to confirm, Return to the Music Menu and select Current Play.

8). Repeat Mode Setting

Press and hold “M” button to return to the main menu. Select Settings press “M” button,

select Music press “M” button and select “Repeat mode” press “M” button. By pressing “◀◀” or “▶▶” button, the play mode will change in the following order: Once, Repeat One, Folder Once, Folder Repeat, All Once, All Repeat and Intro. Finally press “M” button to confirm and Return to the Music Menu and select Current Play..

9). Shuffle

Press and hold “M” button to return to the main menu. Select Settings press “M” button, select Music press “M” button and select Play mode” press “M” button. Choose between Order and Shuffle By pressing “◀◀” or “▶▶” button, Finally press “M” button to confirm, Return to the Music Menu and select Current Play.

10). A-B Repeat

While playing music, press “●” button one time to set the start point “A”, the LCD displays “A-“; press “●” button again to set the end point “B”, the LCD displays “A-B”, and the player starts to repeat the section. Press the “●” button a third time to exit.

“A-B” repeat function is not available when paused.

Note: When “A-” or “A-B” is set, if you press “◀◀” or “▶▶” buttons, the A-B repeat will be cancelled.

11). Lyrics Display

While playing music, press and hold “●” button, the LCD shifts to the lyrics displaying

mode. If there is lyrics file whose name is the same as the music file, and they are placed in the same folder, the player will displays the lyrics automatically.

3. Video Playback

1). Playback

- A). Select “Video” in the main menu and press “M” button to enter.
- B). Press “◀◀” or “▶▶” to select video files.
- C). Press “M” button to start playback.
- D). To return to the main menu, press and hold the “M” button.



2). Volume Adjustment

While in playback mode, press and hold “▶▶” to increase the volume or “◀◀” to decrease the volume.

3). Previous file/Next file; FF/RW

Press “▶▶” button to skip to the next file or press “◀◀” button to skip to the previous file. To Fast Forward or Rewind, press pause, then press and hold “◀◀” or “▶▶”.

4). Pause

When playing, press “▶||” button to pause. Press “▶||” button again, to continue

playback.

5). Play list

Press “M” button to enter the play list. Press “◀◀” or “▶▶” to select files and press “M” button to enter and start playback.

4. FM tuner:

1). Enter FM tuner:

Select “FM” in the main menu, then press “M” button to enter.

2). Manual Station Searching

Press “M” and select “Manual” press the “M” button again, You can now search manually by pressing “◀◀” or “▶▶” button the frequency will decrease or increase by 0.1 MHz.

3). Auto-searching

Press “M” button and select “Auto”, the player search through all stations and store all available stations automatically. Press “◀◀” or “▶▶” to tune to the Preset FM stations.

3). Volume adjustment

Press press and hold “▶▶” to increase the volume or “◀◀” to decrease the volume.



4). Storing Stations

Press “▶▶” or “◀◀” button to select “Mem”, and then press “M” button to save the current station. Press “▶▶” or “◀◀” button to select the channel of saving the station: CH1, CH2..., and press “M” button again to save the station at last. Press “▶||” button to exit.

5). Preset station

Press “▶▶” or “◀◀” button to select “Preset” and press “M” button to start to listen to the preset stations. Press “▶▶” or “◀◀” button to select the channel you want.

6). Delete Stations

Press “▶▶” button to select “Delete” and press “M” button to enter. Press “▶▶” or “◀◀” button to select the station you want to delete, and press “M” button again to confirm the deletion.

5. Picture Viewer

1). Select the “Photo Menu” in the main menu and press the “M” button to enter. You can select the picture you want and view in full screen.

2). Press “▶▶” or “◀◀” button to select the picture you want to display.

3). After selecting the file, press the “M” button to view it in full screen.

4). Press “▶▶” or “◀◀” button to skip to the next or previous picture.

5). Press the “M” button to return to the picture browser.

6). Press “▶||” button to start Slideshow.

7). Slideshow can be set to play in intervals of; 2s, 4s, 6s, 8s or 10-seconds, Press and



Hold the “M” button to exit to the main menu, use the “▶▶” or “◀◀” buttons to get to the “Settings” menu, press the “M” button, use the “▶▶” or “◀◀” buttons, select “Picture Settings” and Press the “M” button, Select “Auto Play Time” and Press the “M” button again, choose your desired speed and press again the “M” button, press the “●” button twice to exit to the main menu

8). Press and hold the “M” button to exit and return to the main menu.

6. E-book

1) Select “E-book” in the main menu and press the “M” button to enter.

A). Press “▶▶” or “◀◀” buttons to select the file you want to read.

B). Press the “M” button to start reading.

C). Press “▶▶” or “◀◀” button to skip to the next or previous line.

D). Press the “●” button to display the “save bookmark” list. Press “▶▶” or “◀◀” buttons to select the bookmark, and then press the “M” button to save it.

E). Press and hold the “●” button to display the “load bookmark” list. Press “▶▶” or “◀◀” buttons to select the bookmark, and then press the “M” button to load it.



F). While reading the E-book, press the “M” button to return to the file list. Press and hold the “M” button to exit to the main menu.

Note: The bookmark is only available to the current file, and has to be re-set while reading other files.

7. Voice recording:

1). Select “Record” menu and press the “M” button to enter.

2). Start Recording:

After entering the recording menu, the LCD displays “Prepare...”

Press the “●” button to start recording.

3). Pause Recording:

To pause recording, press the “●” button to pause, press it again to continue.

4). Save and Continue Recording:

Press and hold the “●” button to save the recorded file, the player will save the file and will prepare to records a new file, Repeat steps 2, 3 and 4.

5). Save and Exit Recording Menu:

Press and hold the “M” button to save the recorded file and exit to the main menu.



6). Play recorded file

A). Enters the “Music” menu, press the “M” button to display the file list.

B). Press the “◀◀” or “▶▶” button to select the “RECORE FILE” folder.

C). Press the “M” button to enter, and press “◀◀” or “▶▶” button to select the file you want to play.

D). Press the “M” button to start playback.

8. Navigation / File Explorer

1). Select “Navigation” in the main menu, and press the “M” button to enter.

2) All File that are stored on the player is listed.

3). Press “◀◀” or “▶▶” to select the folder or file.

4). Press the “M” button to enter after selection. The player enters the corresponding function. If the file is not being recognized, there will be no response after pressing the “M” button.

5). Press and hold the “M” button to return to the main menu.



9. Settings

- 1). Select “Settings” under the main menu, and press the “M” button to enter.
- 2). Press “◀◀” or “▶▶” to select the sub-menu.
- 3). Press the “M” button to enter.
- 4). Press the “●” button to return to the previous menu.
- 5). Press and hold the “M” button to return to the main menu.



3). Music playback settings

There are five options under this menu: Repeat Mode, Play Mode, EQ Select, MS PlayFX Set, User EQ Setting.

- A). Repeat Mode includes: Once, Repeat One, Folder Once, Folder Repeat, All Once, All Repeat and Intro.
- B). Play Mode includes: Order and Shuffle.
- C). EQ Select: Choose between, Normal, MS PlayFX, Rock, Pop, Classic, Bass, Jazz and User EQ.
- D). User EQ Setting: 5 Frequencies, 7 Levels to adjust in each frequency

4). Radio

In this menu there are two options: Stereo Switch, FM Region.

A). Stereo Switch.

In this menu, there are two options: On and Off.

b). FM Region

In this menu there are four options: China, Europe, Japan, and U.S.A.

5). Record Setting:

A). Record Quality

In this menu, there are two options: High Quality or General Quality.

7). Display:

In this menu there are three options: Backlight Time, Lum, and Backlight Mode.

A). Backlight Time

In this menu there are 6 options: 5seconds, 10seconds, 15seconds, 20seconds, 30seconds and Always On.

B). Lum / Brightness

In this menu, there are five options: 1, 2, 3, 4 and 5.

C). Backlight Mode

In this menu, there are two options: Normal and Power Save.

8). System

In this menu, there are three options: About, Upgrade and Default Set.

A). About:

Press “M” key, the following information is displayed: the storage capability, remaining capability, system software version.

Press “M” key to exit.

B). Upgrade:

A pop up dialog box will appear when you press the “M” button, press “◀◀” or “▶▶” to select “Yes or No” and then press the “M” button, connect the player to the PC via USB, the system enters the firmware upgrading status.

C). Default Set:

A pop up dialog box will appear when you press the “M” button, Press “◀◀” or “▶▶” to select “Yes or No” and press the “M” button to confirm.

9). Power Off:

In this menu, there are six options as follows: OFF, 10 Minutes, 15 Minutes, 30 Minutes, 60 Minutes and 120 Minutes.

10). Language:

There are 11 languages for you to select, English, German, French, Spanish, Russian,

Portuguese, Italian, Chinese, Simple Chinese, Japanese, Korean

10. Converting a Video File

AVI is one of the most popular video formats in the portable media player right now. It is very popular on the internet. It adopts XviD/DivX format to code the video file. The quality of the video file is so higher, while the video file is so small. In the quality aspect ratio, for the video file effect, you can adopt XviD/DivX format to code nothing less than adopt WMV or RMVB format to code.

Support converting AVI, MPG, MPEG, RM, RMVB, WMV, DAT and so on format to AVI format in high speed and high quality.

System requirements

The Converter software needs the basic configuration as follows:

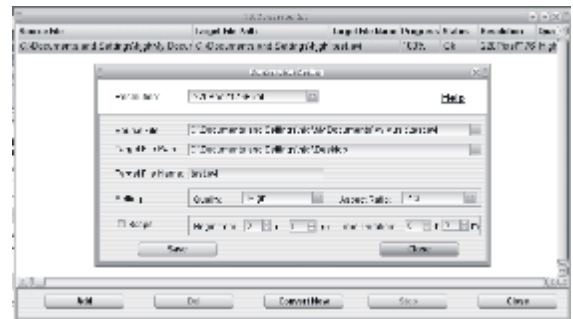
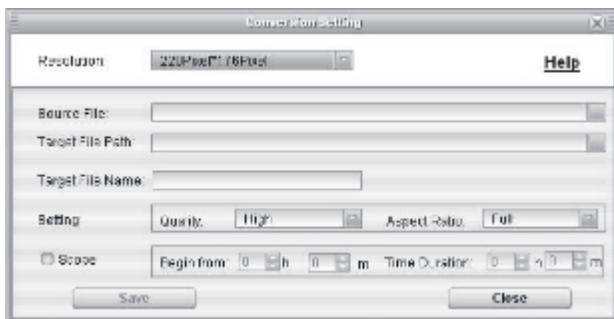
CPU: Intel or AMD kernel, Intel Pentium 3 or above, including Intel Celeron series

Operation steps:

- 1). Run convert tools in the attaché disc, and install AVI Converter;
- 2). After the installation completes, run the AVI Converter in the start menu;
- 3). Show the interface.

Operation steps:

A). Add a converted file, and select source file path, as shown in the picture below:



B). Select the target file path, and press the key in the right of the target file.

C). Select the convert quality and aspect ratio.

D). After each parameter is set, press “Save” key and continue to add a converted file, or press “End” key to return previous interface, convert the current file.

E). Press to start convert.

After the convert progress attains 100%, it shows that the file is converted successfully, and then please use the USB cable to transfer the file to portable media player. In this way, you can watch the video in the player.

11. System Update

There are two ways to upgrade the firmware:

- 1). Select “Settings>System>Upgrade” in the main menu, and then start to upgrade as per the prompt. Details please refer to Section 9: Settings>System setting> Upgrade:.
- 2). Use the “firmware upgrade tools” in the enclosed CD to upgrade the firmware.

Operation steps:

- A). Turn off the player, press and hold the “M” button, do not release it, and connect the player with the PC via USB cable.
- B). After the player is connected to the PC, the PC prompts “Rock USB device”. Install the driver as per the requirement. (If the driver has been installed, you can jump over this step directly) .
- C). After installed the driver, run the “Firmware Update” tool in the enclosed CD.
- D). Press “Open firmware”, and then select a firmware file.
- E). Press “Begin burning”

After the upgrading finishes, exit the program and disconnect the connection between MP3 and PC.

12. Troubleshooting

1). Failure to Power Up:

- Charge the Battery

2) No voice in the earphone

- Please Check the Volume, it might be turned down.
- Please check the connection of the earphone.

3). Reception of FM Radio Is Not Clear.

- The earphones act as the FM antenna.

4). Download file failure

- Check the connection between computer and player.

5). Disc Error

- File Format is not supported.

13. Specification

Display	1.8-inch 65K color LCD	
Connect with PC	USB2.0 (HIGH SPEED)	
Built-in memory	2GB – 4GB	
Power source	Built-in Lithium battery	
Recording	Sampling rate	8KHz/16KHz
	Recording format	WAV(32K bps/64Kbps)
	Recording time	8hours (128M Flash)
MP3、WMA	Earphone Max output	(L) 5mW+(R) 5mW(32 ohm)
	MP3 bit rate	8K bps - 320K bps
	WMA bit rate	32K bps - 384K bps
	Frequency response	20Hz to 20KHz
FM tuner(Optional)	Frequency range	76MHz-90MHz/87.5MHz- 108MHz
	Number of saved stations	20+20
	Earphone Max output	(L)5mW+(R)5mW(32 ohm)
Music file format	MP3, WMA, WAV	
Operating temperature	-5 – 40 °C	
Language	Chinese, English, Japanese, Korean etc.	
OS	Windows98/SE/ME/2K/XP/Vista/Windows 7	