



MERCURY ON-THE-GO PRO

Assembly Manual & User Guide



TABLE OF CONTENTS

INTRODUCTION	1
1.1 Minimum System Requirements	
1.1.1 Apple Mac Requirements	
1.1.2 PC Requirements	
1.1.3 Drive Compatibility	
1.2 Package Contents	
1.3 About This Manual	
1.4 LED Indicator	
1.5 Rear View	
1.5.1 Rear Features	
DEVICE SETUP	3
2.1 Quick Start	
2.2 Assembly Steps	
2.3 Usage Notes	
SUPPORT RESOURCES	8
3.1 Formatting	
3.2 Unmounting drives	
3.3 Troubleshooting	
3.4 About Data Backup	
3.5 Online Resources	
3.6 Contacting Technical Support	

INTRODUCTION

1.1 Minimum System Requirements

1.1.1 Apple Mac Requirements

- FireWire 800: OS X 10.2 or later
- USB 3.1 Gen 1 (backwards compatible to USB 2.0): OS X 10.6 or later

1.1.2 PC Requirements

- FireWire 800: Windows® XP or later
- USB 3.1 Gen 1 (backwards compatible to USB 2.0): Windows XP or later

1.1.3 Drive Compatibility

- Any 2.5 inch SATA drive

1.2 Package Contents



Mercury
On-The-Go Pro



USB 3.1 Gen 1 cable
(Standard-A to Micro-B)



FireWire 800 (1394b)
9-9 pin cable**



Carrying case



Screws and
rubber feet ***

* On-The-Go Pro with SSD pictured; not all versions include an SSD.

**FireWire 800 cable included only with units that have FireWire 800 ports.

*** Screws and rubber feet included only with the “add your own drive” kits.
Phillips PH2 driver required.

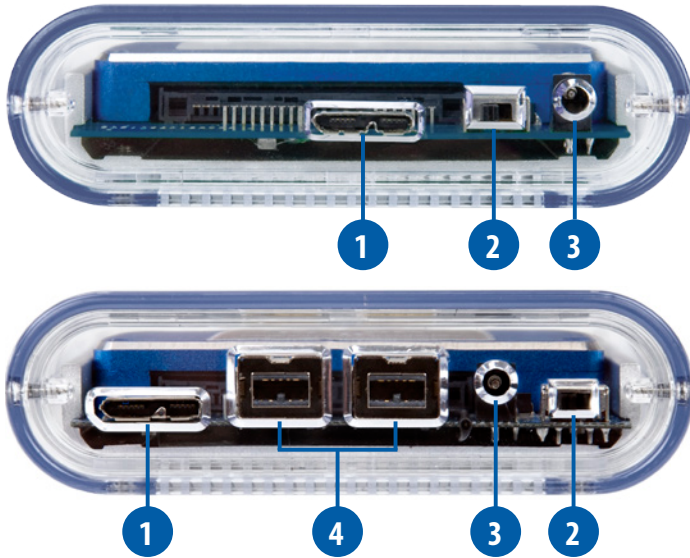
1.3 About This Manual

The images and descriptions may vary slightly between this manual and the unit shipped. Functions and features may change depending on the firmware version. Please visit the product web page for the current product specifications.

1.4 LED Indicator

The Mercury On-The-Go Pro has a blue LED at the front. The LED emits a solid blue light when the unit is powered on and flashes during drive activity.

1.5 REAR VIEW



1.5.1 Rear Features

1. USB 3.1 Gen 1 port — Attach the included USB 3.1 Gen 1
2. (Standard-A to Micro-B) cable here.
3. On/Off switch — Power the Mercury On-The-Go Pro on and off here.
4. Power input — Connect the optional 5V power adapter here (sold separately).
5. FireWire 800 ports — Attach the included 9-9 pin FireWire 800 cable to one of these ports and to the computer. Use the other FireWire 800 port to daisy-chain other FireWire 800 devices. NOTE: Any device daisy-chained to the Mercury On-The-Go Pro must be powered by its own power supply. The Mercury On-The-Go Pro cannot bus power other devices.

DEVICE SETUP

2.1 Quick Start

NOTE: If you are installing your own 2.5 inch SATA drive, skip this section and proceed to **Section 2.2** for assembly instructions.

You will need to format the Mercury On-The-Go Pro before using it. The OWC Drive Guide formatting utility has been pre-installed to assist you. Follow the steps below to use Drive Guide to format the Mercury On-The-Go Pro for Mac (OS X 10.4 and later) or Windows (XP and later). Connect the drive to the computer using the proper cable. If you prefer to use a different formatting utility, do so at this time, then skip ahead to **Section 3.1** to review additional support information.

1. The drive will show up as “OWC SETUP”. Open the drive to view its contents.
2. Double-click the OWC Drive Guide application.
3. Follow the on-screen instructions to complete the formatting process.
4. Once the formatting is finished the drive is ready to use.

2.2 Assembly Steps

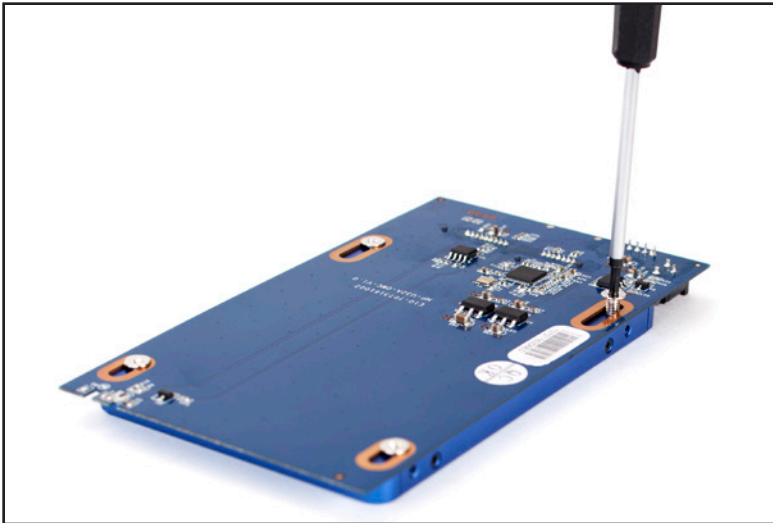
1. Remove the small piece of protective foam from the open end of the enclosure. Tilt the enclosure slightly so that the blue circuit board slides out enough that you can remove it from the enclosure.



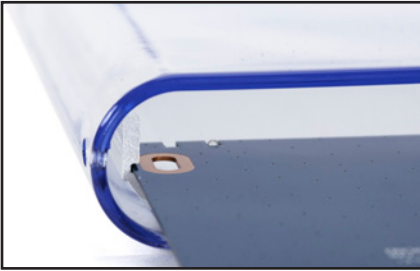
2. Insert the SATA connector on the back of the drive into the SATA connector on the circuit board. Verify the drive is fully seated before continuing.



3. Holding the SATA drive in place, turn the circuit board over. Using a Phillips driver and four of the larger screws from the included packet, affix the drive to the circuit board, as shown below.



- Align the front edge of the circuit board (i.e. the edge opposite the power switch) with the two grooves on the heat sink (below left). Once aligned, carefully slide the entire circuit board into the enclosure, until the board contacts the front cover (below right).



- Take the plastic end-cap and align its cutouts with the ports on the circuit board (below left); make sure the end-cap is not upside down. Next insert the end-cap into the back of the enclosure. The cutouts in the end-cap should sit flush around the data port(s) and the power switch should protrude through the corresponding cutout (below right).



6. There is a small screw hole on each side of the enclosure near the end-cap. Insert one of the two smaller screws into each hole, then fasten them to the enclosure.



7. Affix two more of the large screws from the included packet into the two empty screw holes that run through the plastic casing and heat sink. NOTE: you will be left with a few spare screws; store these in case you need them later.



8. Find the adhesive strip with the four rubber pads attached to it. Each pad can be peeled off and attached to one of the four similarly shaped recesses on the bottom of the enclosure (shown below). The assembly process is now complete.



2.3 Usage notes

- Connect only one interface (USB or FireWire) at a time.
- The Mercury On-The-Go Pro is designed to receive all needed power through the USB or FireWire cable, therefore a separate power adapter is not necessary and not included. For rare circumstances in which external power may be necessary, an optional 5V power adapter is available at: www.owcdigital.com/otg-power
- Some SSDs require the 5V power adapter to function properly when installed in the Mercury On-the-Go. Please see **Section 3.5** to contact technical support for more information.
- If the Mercury On-The-Go Pro is daisy-chained off of another FireWire device instead of being connected directly to a computer, you must use the optional 5V power adapter. Attempting to bus-power the Mercury On-The-Go Pro using the FireWire port of another device could cause damage to one or both devices, and should not be attempted.
- Even when the optional power adapter is not connected, the On/Off switch must be in the 'On' position to use the Mercury On-The-Go Pro.
- For the safe removal of the drive and to ensure that no data is lost, always eject or unmount the drive from the operating system before powering off. See **Section 3.2** for tips on the best ways to unmount the drive.

3.1 Formatting

For additional drive formatting options and information, go to:

www.owcdigital.com/format

3.2 Unmounting drives

To properly unmount any connected drives from the computer, you need to follow a few simple steps.

OS X:

There are several options, including: 1) drag the icon for the disk(s) to the trash can; and 2) right-click the disk icon on the Desktop, then click “Eject”.

Windows:

Go to the System Tray (located in the lower right corner of the screen). Click the “Eject” icon (a small green arrow over a hardware image). A message will appear, detailing the devices that the “Eject” icon controls, i.e., “Safely remove...” Click on this prompt. You will then see a message that says, “Safe to Remove Hardware.” It is now safe to disconnect the Mercury On-The-Go Pro from the computer.

3.3 Troubleshooting

Begin the troubleshooting by verifying that both ends of the cables are properly plugged into the computer and the Mercury On-The-Go Pro. If the drive is still not working properly, try connecting to another interface such as the USB port and see if the device works properly. You can also connect the On-The-Go Pro to a different computer. If problems persist, see **Section 3.5** to find out about our online help resources, or see **Section 3.6** for information on contacting OWC technical support.

3.4 About Data Backup

To ensure that the files are protected and to prevent data loss, we strongly suggest that you keep two copies of the data: one copy on the Mercury On-The-Go Pro and a second copy on either the internal drive or another storage medium, such as an optical backup, or on another external storage unit. Any data loss or corruption while using the Mercury On-The-Go Pro is the sole responsibility of the user, and under no circumstances may OWC, its parents, partners, and affiliates be held liable for loss of the use of data including compensation of any kind or recovery of the data.

3.5 Online Resources

Data Migration

For our recommended method of migrating the data from an old drive to a new one, visit: www.owcdigital.com/support/data-transfer

FAQs

Access our online collection of frequently asked questions for this and other products at: www.owcdigital.com/support/faq

3.6 Contacting Technical Support

8am - 8pm (CT) Monday - Friday

9am - 4pm (CT) Saturday



(866) 692-7100 (North America)
+1 (815) 338-4751 (International)



Live chat is available during normal business hours at:
www.owcdigital.com/support



Email support is also available at:
www.owcdigital.com/support

Changes:

The material in this document is for information purposes only and subject to change without notice. While reasonable efforts have been made in the preparation of this document to assure its accuracy, OWC and its officers and employees assume no liability resulting from errors or omissions in this document, or from the use of the information contained herein. OWC reserves the right to make changes or revisions in the product design or the product manual without reservation and without obligation to notify any person of such revisions and changes.

FCC Statement:

Warning! Modifications not authorized by the manufacturer may void the user's authority to operate this device.

NOTE: This equipment has been tested and found to comply with the limits for a Class A digital device, pursuant to Part 15 of the FCC Rules. These limits are designed to provide reasonable protection against harmful interference when the equipment is operated in a commercial environment. This equipment generates, uses, and can radiate radio frequency energy and, if not installed and used in accordance with the instruction manual, may cause harmful interference with radio communications. Operation of this equipment in a residential area is likely to cause harmful interference, in which case the user will be required to correct the interference at his own expense.

NOTE: This equipment has been tested and found to comply with the limits for a Class B digital device, pursuant to Part 15 of the FCC Rules. These limits are designed to provide reasonable protection against harmful interference in a residential installation. This equipment generates, uses and can radiate radio frequency energy and, if not installed and used in accordance with the instructions, may cause harmful interference to radio communications. However, there is no guarantee that interference will not occur in a particular installation. If this equipment does cause harmful interference with radio or television reception, which can be determined by turning the equipment off and on, the user is encouraged to try to correct the interference by one or more of the following measures:

- Reorient or relocate the receiving antenna.
- Increase the separation between the equipment and receiver.
- Connect the equipment to an outlet on a circuit different from that to which the receiver is connected.

Health And Safety Precautions:

- Use proper anti-static precautions while performing the installation of the hard drives into this drive enclosure. Failure to do so can cause damage to the drive mechanisms and/or the hard drive enclosure.
- Read this user guide carefully and follow the correct procedures when setting up the device.
- Do not attempt to disassemble or modify the device. To avoid any risk of electrical shock, fire, short-circuiting or dangerous emissions, never insert any metallic object into the device. If it appears to be malfunctioning, contact OWC technical support.
- Never expose the device to rain, or use it near water or in damp or wet conditions. Never place objects containing liquids on the drive, as they may spill into its openings. Doing so increases the risk of electrical shock, short-circuiting, fire or personal injury.

General Use Precautions:

- To avoid damage, do not expose the device to temperatures outside the range of -40° C to 65° C (-41° F to 149° F).
- When using the optional power supply, always unplug from the electrical outlet if there is a risk of lightning or if the enclosure will be unused for an extended period of time. Otherwise, there is an increased risk of electrical shock, short-circuiting or fire.
- Do not use the device near other electrical appliances such as televisions, radios or speakers. Doing so may cause interference which will adversely affect the operation of the other products.
- Do not place the device near sources of magnetic interference, such as computer displays, televisions or speakers. Magnetic interference can affect the operation and stability of hard drives.
- Do not place heavy objects on top of the device.
- Protect the device from excessive exposure to dust during use or storage. Dust can build up inside the device, increasing the risk of damage or malfunction.
- Do not block any ventilation openings on the device. These help to keep the device cool during operation. Blocking the ventilation openings may cause damage to the device and cause an increased risk of short-circuiting or fire.
- For up-to-date product and warranty information, please visit the product web page.

Copyrights and Trademarks:

No part of this publication may be reproduced, stored in a retrieval system, or transmitted in any form or by any means, electronic, mechanical, photocopying, recording or otherwise, without the prior written consent of OWC.

© 2016 OWC. All rights reserved.

OWC and Mercury On-The-Go are trademarks of New Concepts Development Corporation, registered in the U.S. Patent and Trademark Office and/or in Canada. The OWC logo is a trademark of New Concepts Development Corporation. Apple, FireWire, Mac, and OS X are trademarks of Apple Inc., registered in the U.S. and other countries. Windows is a registered trademark of Microsoft Corporation in the U.S. and other countries. Other marks may be the trademark or registered trademark property of their owners.

R18 06/02/16 DM



OWCMANOTGUNV

Copyright 2016 OWC. All Rights Reserved.

OWC's Limited Warranty is not transferable and subject to limitation.