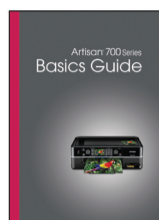
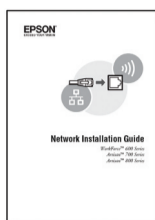
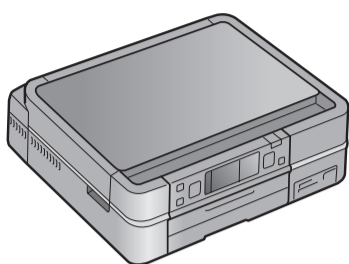


# Artisan™ 700 Series Start Here

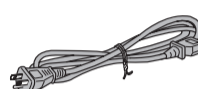
## 1 Unpack



(Included for  
Canada only)



Ethernet cable



Power cord

**Canada only:** For French speakers, remove each sticker from the backing sheet and place next to the corresponding button on the control panel.

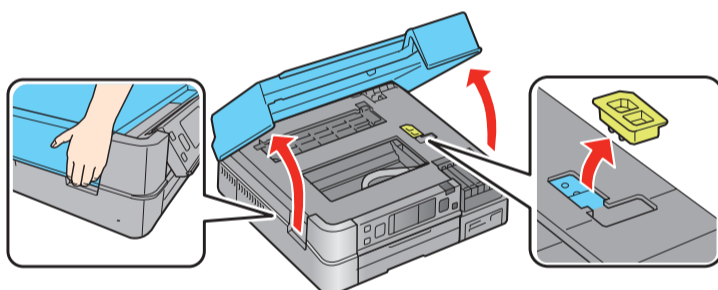
**Caution:** Do not open ink cartridge packages until you are ready to install the ink. Cartridges are vacuum packed to maintain reliability.

If anything is missing, contact Epson as described on the back under “Any questions?”.

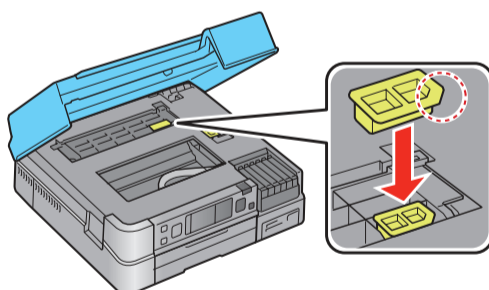
Remove all protective materials.

**Note:** Make sure to remove all protective materials from inside the paper cassette.

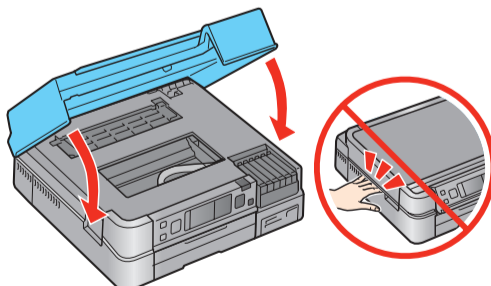
- 1 Lift the scanner and remove the transportation lock.



- 2 Store the transportation lock as shown.



- 3 Close the scanner.



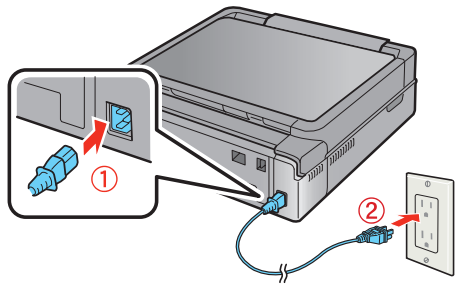
\*411565400\*

# 2

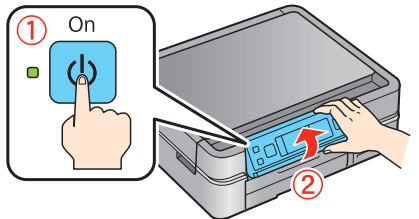
## Turn on and adjust

- 1 Connect the power cable.

**Caution:** Do not connect to your computer yet.

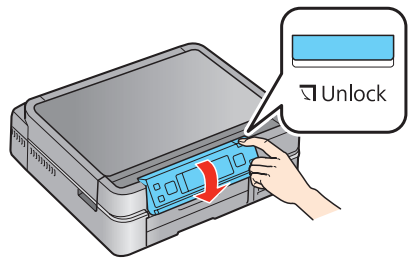


- 2 Press the **On** button, then raise the control panel.



To lower the control panel, press the **Unlock** button.

**Caution:** To avoid damaging your Artisan 700 Series, always press the **Unlock** button to lower the control panel.

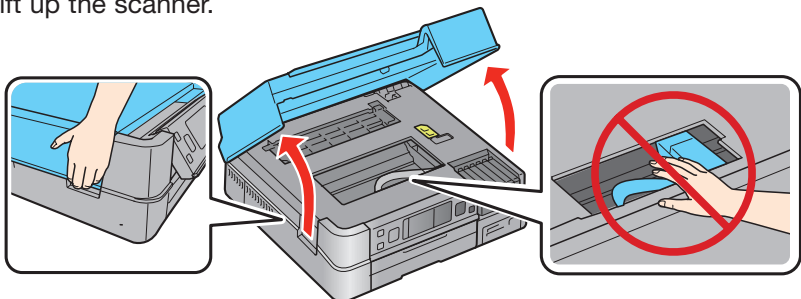


# 3

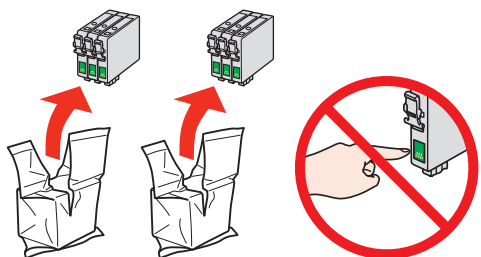
## Install ink cartridges

**Note:** Don't load paper before installing the ink cartridges.

- 1 Lift up the scanner.

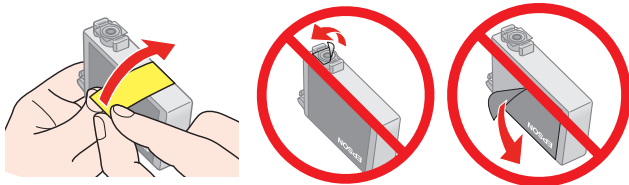


- 2 Unpack the ink cartridges.

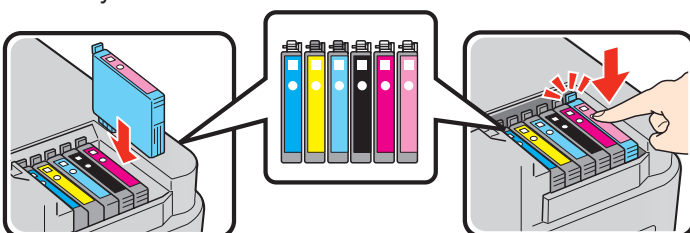


- 3 Remove only the yellow tape from each cartridge.

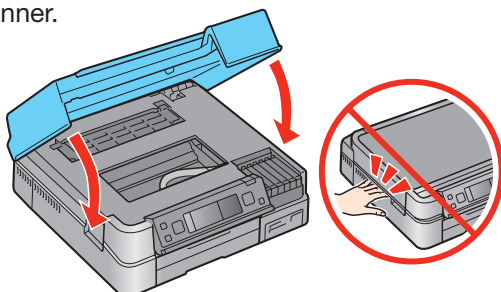
**Caution:** Don't remove any other seals from the cartridges.



- 4 Insert the cartridges in the holder for each color. Press the cartridges down until they click.



- 5 Close the scanner.



- 6 Wait while ink charges. Charging takes about 5 minutes.

**Note:** Your Artisan 700 Series ships with full cartridges. Part of the ink from the first cartridges is used for priming the Artisan 700 Series. Replacement cartridges will print more pages.

**Caution:** Don't turn off the Artisan 700 Series while the ink system is initializing or you'll waste ink.

## 4 Select language

- 1 If you need to change the language, press the **Home** button until **Setup** is selected.

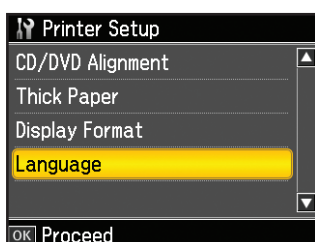


- 2 Press **OK**.

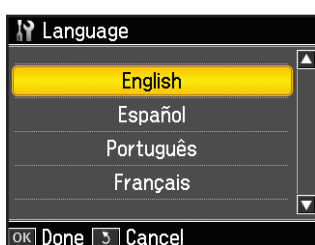
- 3 Press **◀** or **▶** to select **Printer Setup**, then press **OK**.



- 4 Press **▼** to select **Language**, then press **OK**.



- 5 Press **▲** or **▼** to select your language, then press **OK**.

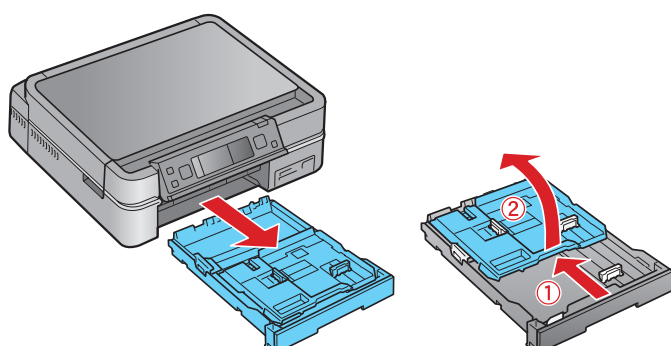


- 6 Press the **Home** button when done.

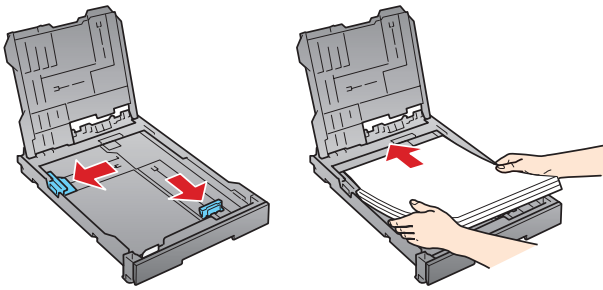
## 5 Load paper

The paper cassette has 2 trays. The main tray is for letter-size, legal-size, or 8 x 10 inch paper. The photo tray is for 4 x 6- or 5 x 7-inch photo paper.

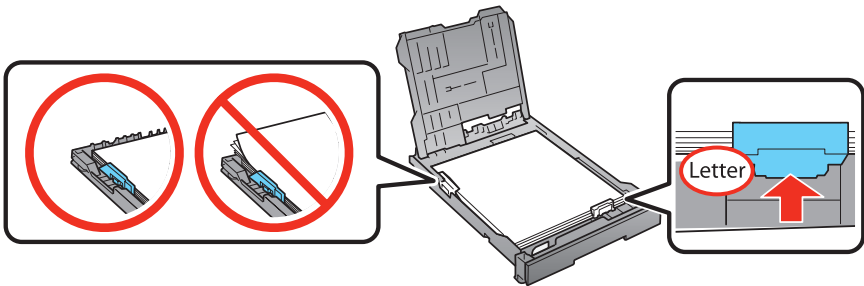
- 1 Pull out the paper cassette. Then slide back the photo tray and lift it up.



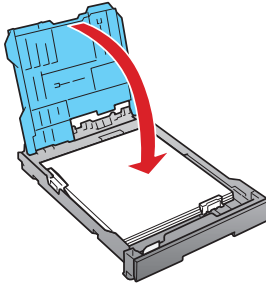
- 2** Squeeze the edge guides and slide them out. Then insert paper with the glossy or printable side face-down.



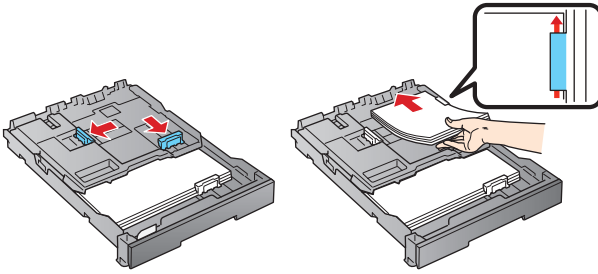
- 3** Slide the edge guides against the paper.



- 4** Lower the photo tray.

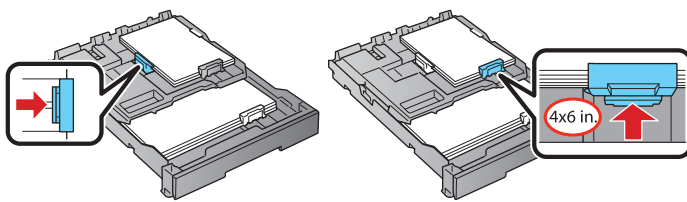


- 5** Squeeze the edge guides and slide them out. Then insert 4 x 6-inch or 5 x 7-inch photo paper with the glossy or printable side face-down.

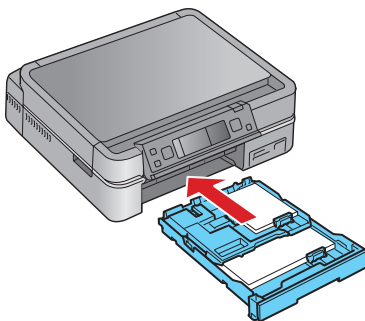


**Note:** Make sure the paper fits under the edge guide.

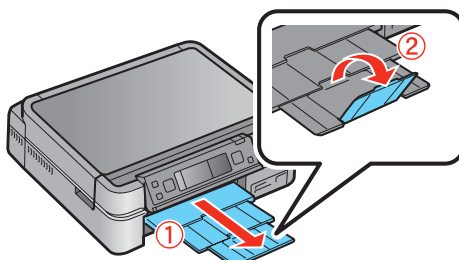
- 6** Slide the edge guides against the paper.



- 7** Keep the cassette flat as you insert it.

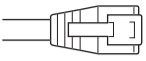


- 8** Extend the output tray and flip up the stopper.



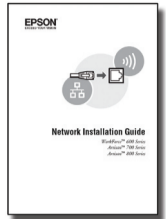
# 6

## Choose your connection

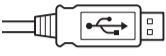


### Network (wireless or wired)

See your **Network Installation Guide**.  
You can't install your software as described below.



# OR



### USB connection

Make sure you have a **USB cable (not included)**.  
Then follow the steps below.

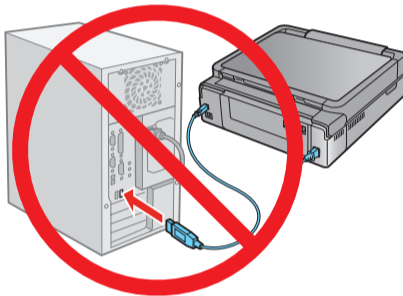


## USB connection

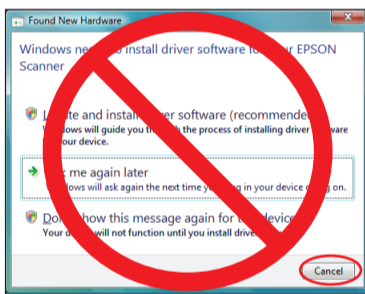
Follow these steps to connect the Artisan 700 Series directly to your computer using a USB cable (not included).

### Windows

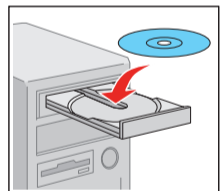
- 1 Make sure the Artisan 700 Series is **NOT CONNECTED** to your computer.



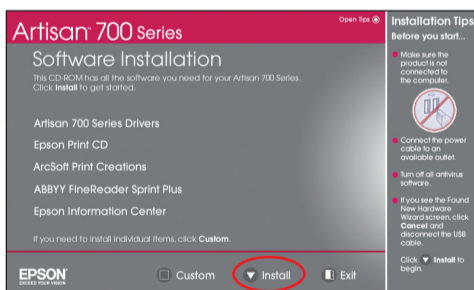
**Note:** If you see a Found New Hardware screen, click **Cancel** and disconnect the USB cable. You can't install your software that way.



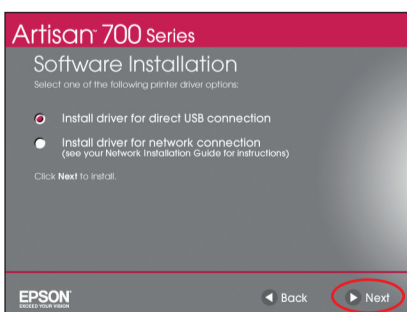
- 2 Insert the Artisan 700 Series software CD.  
With Windows Vista, if you see the AutoPlay window, click **Run Esetup.exe**. When you see the User Account Control screen, click **Continue**.



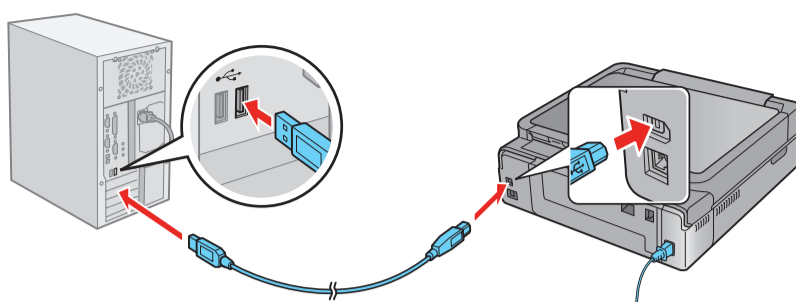
- 3 Click **Install** and follow the on-screen instructions.



- 4 When you see this screen, select **Install driver for direct USB connection** and then click **Next**.



- 5** When prompted, connect a USB cable. Use any open USB port on your computer.



**Note:** If installation doesn't continue after a moment, make sure you securely connected the USB cable and turned on the Artisan 700 Series.

- 6** Follow the on-screen instructions to install the rest of the software and register your Artisan 700 Series.

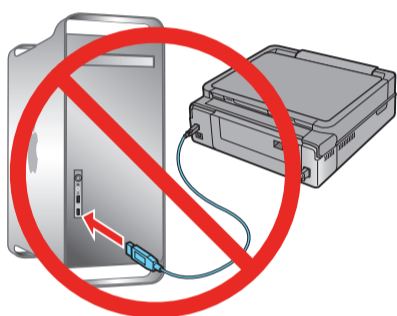
Be sure to register your Artisan 700 Series to receive these great benefits: 2-year limited warranty and 2-year toll-free customer support.\*

- 7** When you're done, remove the CD.

You're ready to go! Enjoy your Artisan 700 Series! See your *Basics Guide* or on-screen *Epson Information Center* for instructions.

## Macintosh®

- 1** Make sure the Artisan 700 Series is **NOT CONNECTED** to your computer.



- 2** Insert the Artisan 700 Series software CD.



- 3** Double-click the **EPSON Epson** icon.

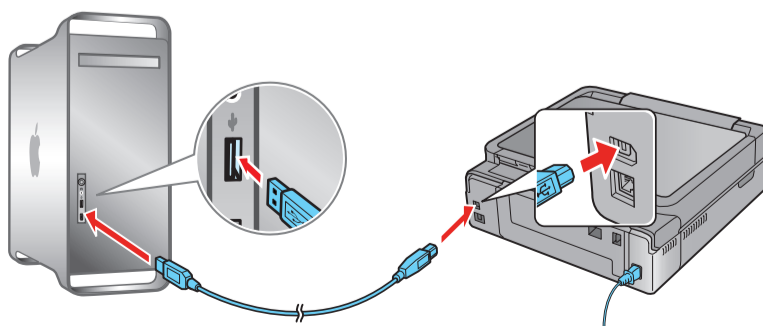
- 4** Click **Install** and follow the on-screen instructions.



- 5** When you see this screen, select **Install driver for direct USB connection** and then click **Next**.

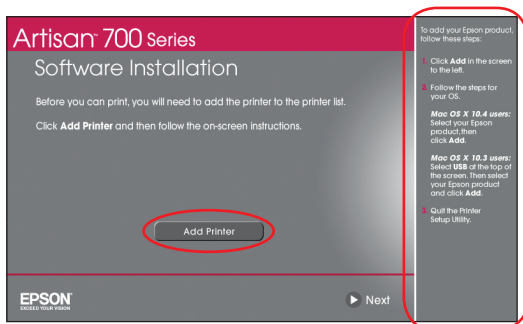


- 6** When prompted, connect a USB cable. Use any open USB port on your computer. Make sure the Artisan 700 Series is securely connected and turned on.



Mac OS X 10.5 users: skip to step 9. Other users: continue with step 7.

- 7** When you see this screen, click **Add Printer**. Follow the steps on the right side of the screen to add the Artisan 700 Series.



- 8** Click **Next** again, if necessary.

- 9** Follow the on-screen instructions to install the rest of the software and register your Artisan 700 Series.

Be sure to register your Artisan 700 Series to receive these great benefits: 2-year limited warranty and 2-year toll-free customer support.\*

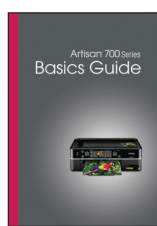
- 10** When you're done, eject the CD.

You're ready to go! Enjoy your Artisan 700 Series! See your *Basics Guide* or on-screen *Epson Information Center*.

## Any questions?

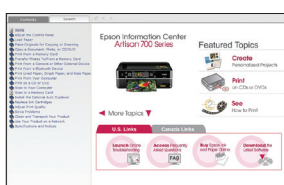
### Basics Guide

Easy and quick answers to your questions on printing, copying, scanning, and faxing.



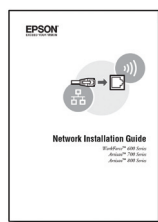
### On-screen Epson Information Center

Click the desktop shortcut for easy access to the Artisan 700 Series *Epson Information Center*, FAQs, online troubleshooting advice, and software downloads. You can also purchase paper and ink.



### Network Installation Guide

Instructions on configuring the Artisan 700 Series for a network.



### On-screen help with your software

Select **Help** or **?** when you're using your software.

### Epson Technical Support

#### Internet Support

Visit Epson's support website at [epson.com/support](http://epson.com/support) and select your product for solutions to common problems. You can download drivers and documentation, get FAQs and troubleshooting advice, or e-mail Epson with your questions.

For a video tutorial and other information about setting up a wireless network, go to: [epson.com/support/wireless](http://epson.com/support/wireless)

#### Speak to a Support Representative

Call (562) 276-4382 (U.S.) or (905) 709-3839 (Canada), 6 AM to 6 PM, Pacific Time, Monday through Friday. Days and hours of support are subject to change without notice. Toll or long distance charges may apply.

#### Software Technical Support

ArcSoft® Print Creations™  
[www.arcsoft.com/support](http://www.arcsoft.com/support)

ABBYY® FineReader® Sprint Plus  
(510) 226-6717  
[www.abbyyusa.com](http://www.abbyyusa.com)  
[support@abbyyusa.com](mailto:support@abbyyusa.com)

# Need paper and ink?

Try Epson premium papers with Claria® ink for better than photo lab quality results. For the right supplies at the right time, you can purchase them at Epson Supplies Central<sup>SM</sup> at [www.epson.com/ink3](http://www.epson.com/ink3) (U.S. sales) or [www.epson.ca](http://www.epson.ca) (Canadian sales). You can also purchase supplies from an Epson authorized reseller. To find the nearest one, call 800-GO-EPSON (800-463-7766).

## Genuine Epson Paper

Epson offers a wide variety of papers to meet your needs; visit Epson Supplies Central for more information.



### Ultra Premium Photo Paper Glossy

Instant-drying high gloss paper for long-lasting photos, suitable for framing.

## Genuine Epson Inks



Look for the numbers below to find your cartridges. It's as easy as remembering your number!



Color	Standard Capacity	High Capacity
● Black	–	98
● Cyan	99	98
● Magenta	99	98
● Yellow	99	98
● Light Magenta	99	98
● Light Cyan	99	98

**Note:** The 98 High Capacity Black (and all 99 Standard Capacity) ink cartridges are available online and from Epson authorized resellers. The 98 High Capacity color ink cartridges are available only online; visit [www.epson.com/highcapacity](http://www.epson.com/highcapacity) (U.S. sales) or [www.epson.ca](http://www.epson.ca) (Canadian sales).

\* 1-year limited warranty to all purchasers; 2-year toll-free support and second year warranty require registration within 60 days of purchase. For California and Québec residents, failure to submit this product registration form does not diminish your warranty rights.

Epson is a registered trademark, Epson Exceed Your Vision is a registered logomark, and Supplies Central is a service mark of Seiko Epson Corporation. Claria is a registered trademark and Artisan is a trademark of Epson America, Inc.

General Notice: Other product names used herein are for identification purposes only and may be trademarks of their respective owners. Epson disclaims any and all rights in those marks.

This information is subject to change without notice.

© 2008 Epson America, Inc. 8/08

CPD-25860R2

Cut out the card to the right and keep it with you when purchasing replacement ink cartridges.

### Artisan 700 Series Ink Cartridges

Color	Standard Capacity	High Capacity
● Black	–	98
● Cyan	99	98
● Magenta	99	98
● Yellow	99	98
● Light Magenta	99	98
● Light Cyan	99	98

The 98 High Capacity color ink cartridges are available only online; visit [www.epson.com/highcapacity](http://www.epson.com/highcapacity) (U.S. sales) or [www.epson.ca](http://www.epson.ca) (Canadian sales).