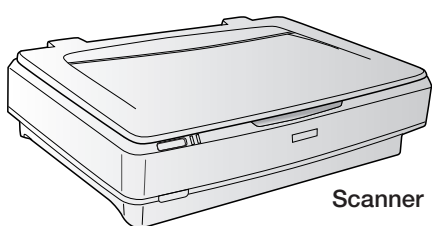


Start Here

Epson Expression® 10000XL

1 Unpack Your Scanner

- 1 Remove everything from the box.



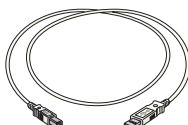
Scanner



User's Guide



Power cord



USB cable



Scanner Software CD-ROM

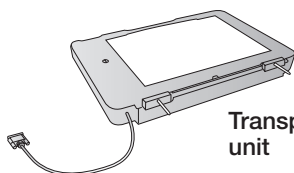


Adobe® Photoshop® Elements CD-ROM



MonacoEZcolor® CD-ROM

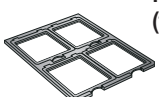
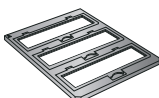
If you have the Photo version of the scanner, the following items are also included.



Transparency unit



Transparency guide



Film holders (two of each type)



LaserSoft Imaging™ SilverFast® Ai 6 CD-ROM

- 2 Remove all the tape and packing material inside and around the product.

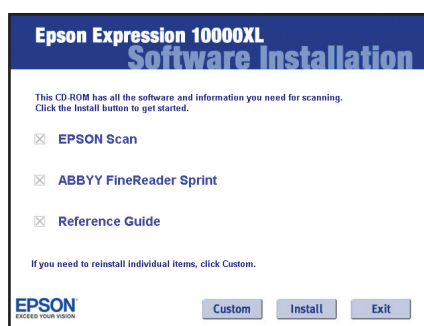
2 Install the Software

Wait! You must install your software before connecting the scanner to your computer. The installation may take several minutes. Be sure to close all open programs and turn off any virus protection programs.

EPSON Scan works with Windows® Vista™, XP, and 2000, and Macintosh® OS X 10.2.x, 10.3.9 to 10.4.x. Follow the steps in the section for your operating system.

Windows


- 1 Insert the *Scanner Software* CD-ROM in your CD-ROM or DVD drive. With Windows Vista, if you see the AutoPlay window, click **Run Epssetup.exe**. When you see the User Account Control screen, click **Continue**.
- 2 Read the license agreement and click **Agree**. The Software Installation screen appears.

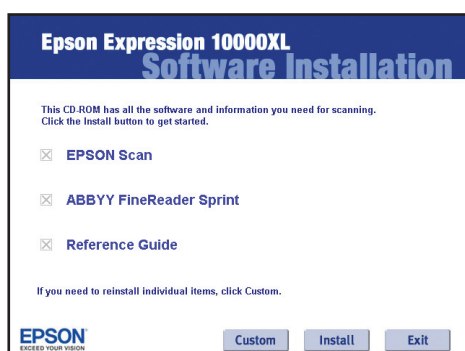


- 3 Click the **Install** button.
- 4 When you see a message that installation is complete, click **Exit**.
- 5 Follow the on-screen instructions to register your scanner, then remove the CD-ROM.

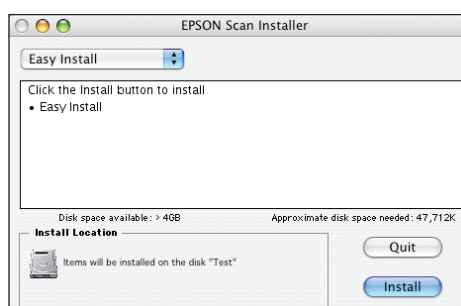
If you want to use any of the bonus software included with your scanner, insert the CD-ROM for the software you want to install, and follow the on-screen instructions. Some software may not be compatible with Windows Vista.

Macintosh OS X

- 1 Insert the *Scanner Software* CD-ROM in your CD-ROM or DVD drive.
- 2 Double-click the  **Epson CD-ROM** icon on the desktop.
- 3 Double-click the **Epson** icon.
- 4 Read the license agreement and click **Agree**.



- 5 When you see this screen, click the **Install** button.
- 6 Enter your name and password, if required, then click **OK**. Read the license agreement and click **Accept**.
- 7 When you see this screen, click **Install**.



- 8 When the installation is done, click **Quit**.
- 9 When you see a message that installation is complete, click **Exit**.
- 10 Follow the on-screen instructions to register your scanner, then remove the CD-ROM.

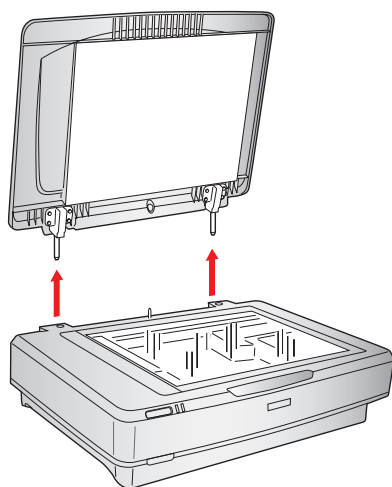
If you want to use any of the bonus software included with your scanner, insert the CD-ROM for the software you want to install, and follow the on-screen instructions.

3

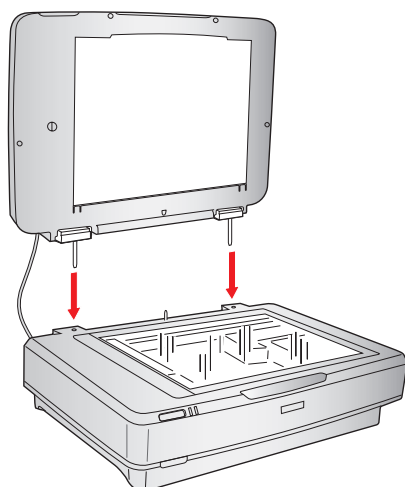
Install the Transparency Unit

If you have the Photo version of the scanner, you need to install the transparency unit.

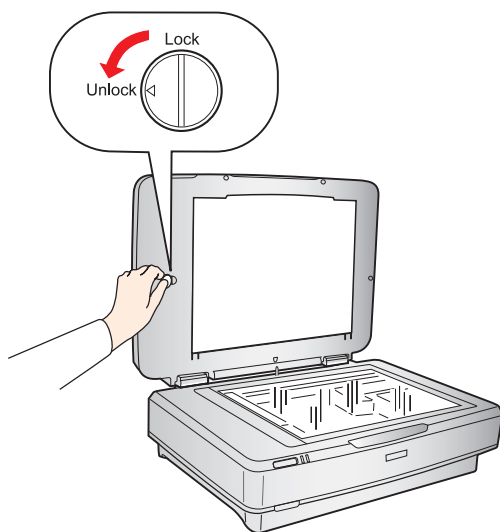
- 1 Fully open the scanner's document cover, then lift it straight up.



- 2 Lower the transparency unit onto the scanner, so that the pins fit into the holes as shown.

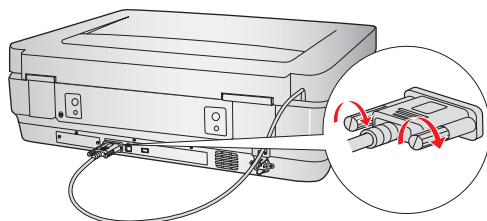


- 3 Use a coin to turn the transportation lock to the **Unlock** position.



- 4 Close the transparency unit.

- 5 Connect the transparency unit cable to the scanner's **OPTION** port, then tighten its screws.





4

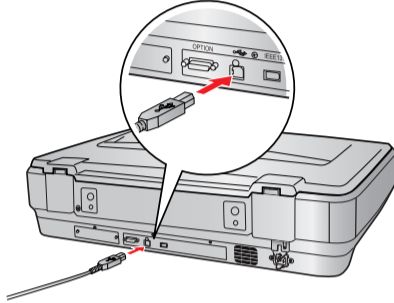
Connect the Scanner

Note: If you are installing the optional Network Image Express card, see the instructions in the *User's Guide*.

- 1 Connect the scanner to your computer.

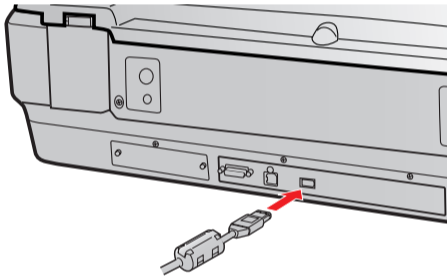
If you're using USB . . .

Plug the  square end of the USB cable into the scanner's USB port. Then plug the  flat end into any available USB port on your computer or USB hub.

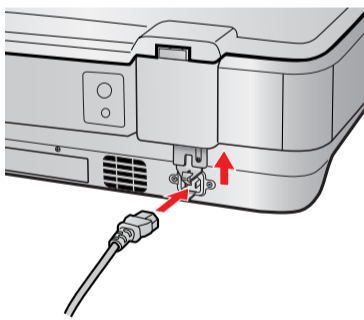



If you're using IEEE 1394 (FireWire[®]) . . .

Plug one end of the IEEE 1394 cable (not included) into the scanner's IEEE 1394 port. Then plug the other end into the IEEE 1394 port on your computer.

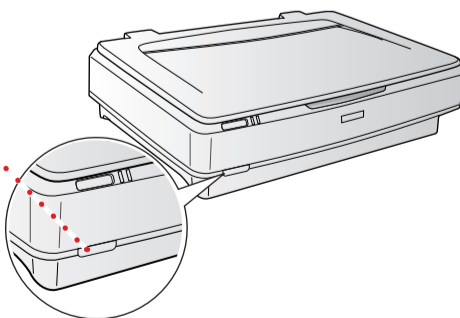


- 2 Slide the transportation lock (the tab over the AC connector) up to the **Unlock** position.



- 3 Plug the scanner's power cord into the AC connector. Then plug the other end into a grounded electrical outlet.
- 4 Press the  power button on the front of the scanner to turn it on. The green **Ready** light blinks for about 30 seconds during initialization, and then stays on when the scanner is ready to use.

Power button



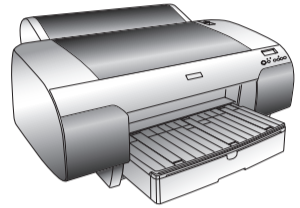
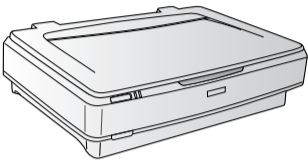
Caution: If you turn off the scanner, wait at least 10 seconds before turning it back on.

Getting the Most from Your Scanner

Your scanner includes various features that enable you to create professional, high-quality scans. It also includes bonus software such as Adobe Photoshop Elements and ABBYY FineReader Sprint (described in your *User's Guide*), MonacoEZcolor (see below), and LaserSoft Imaging Silverfast (Photo version of the scanner only).

Note: For detailed instructions, see the electronic manual for each software application. The SilverFast CD-ROM also contains useful QuickTime® tutorials. Some software may not be compatible with Windows Vista.

Managing Color

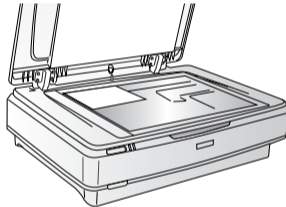


You can use MonacoEZcolor to calibrate your scanner and ensure that printouts of scanned images closely match the originals. In this example, a color profile is created for scanning reflective (paper) documents. If you are planning to work with positive film or slides, you will also have to create a profile for scanning transparencies.

Note: You can also use MonacoEZcolor to create profiles for your printer, monitor, and digital camera. For details, see the on-screen guide included with the software.

First, scan the target image using EPSON Scan:

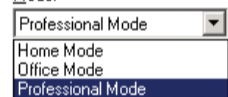
- 1 Turn on your scanner, then place the reflective target included with MonacoEZcolor face-down on the scanner glass. (Use the larger, 5×7 color chart as the target.) Put it in the upper-left corner of the glass, as shown.



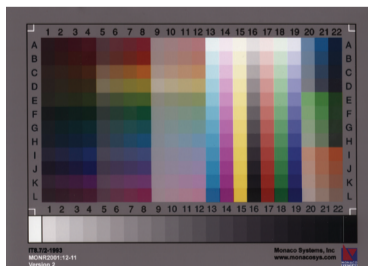
- 2 Open EPSON Scan.
- 3 Select **Professional** as the Mode at the top of the screen. Then choose these settings:

- Document Type: **Reflective**
- Auto Exposure Type: **Photo**
- Image Type: **48-bit Color**
- Resolution: **200 dpi**

Mode:






- 4 Click the **Configuration** button at the bottom of the screen, click the **Color** tab, select **No color correction**, and then click **OK**.
- 5 Click the **Preview** button to prescan your image.
- 6 Draw a marquee around the target image so it looks like this.



- 7 Click **Scan**, then save your image as a TIFF file.

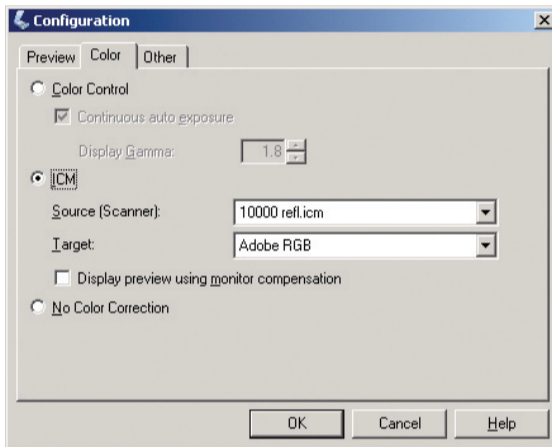
continue


Next, load the scanned image into MonacoEZcolor:

- 1 Open MonacoEZcolor, then click **Create Input Profile**.  
- 2 Click the  arrow button until you see the “Input the target” screen. Then click the **Load an Image** button to import your scanned image. Check it against the example images to verify that it looks correct.
- 3 Continue with the instructions on the screen to select the correct reference file and give your profile a name—for example, “10000 refl” to indicate that it’s for scanning reflective images with this scanner.

Now you are ready to scan a photo using your new color profile. In this example, a photo is scanned into Adobe Photoshop Elements. (You can install Photoshop Elements from the CD-ROM included with your scanner.)

- 1 Place your photo on the scanner, then open Photoshop Elements.
- 2 Click **File > Import > EPSON Expression 10000XL**.
- 3 Select **24-bit Color** as the Image Type (Photoshop Elements does not support 48-bit color). Then select any other settings appropriate for your image.
- 4 Click the **Configuration** button, click the **Color** tab, and then click **ICM** (for Windows) or **ColorSync** (for Macintosh).



- 5 For the **Source**, select the name of the profile you created for your scanner. For the **Target**, select a working space that has a wide color gamut, such as Adobe RGB, and then click **OK**.
 - 6 Click the **Preview** button to prescan your image. Marquee-select just the area of the image you want to scan.
 - 7 Click the  Auto Adjust button to apply your color profile. (The button is located near the bottom of the main EPSON Scan screen; you may have to scroll down to see it.) Then click **Scan**.
 - 8 When scanning completes, close EPSON Scan to view your scanned image in Photoshop Elements.
- Note:** The target profile you selected is embedded in the scanned image.
- 9 In Photoshop Elements, click **Edit > Color Settings > Full color management**, then click **OK**.
 - 10 Click **File > Print**. Click the **Show More Options** box. Select **Same as source** to use Adobe RGB as your Print Space profile.

Note: If you have ICC profiles for your printer (including the specific print settings and type of paper you plan to use), you can select the appropriate printer profile instead.

Now you are ready to print your scanned image. Make sure your printer’s color management settings are turned off in your printer software before you begin. If you’re using an ICC profile for the printer, be sure to select the same printer settings and load the paper specified in the profile.

Enhancing Your Photos

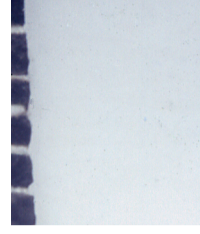
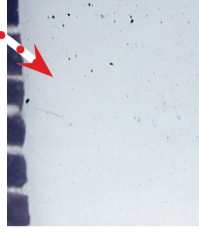
EPSON Scan includes various filters to improve your photos, including Color Restoration and Dust Removal. For details on using these features, see your *User's Guide*.



Before and after Color Restoration



Original photo



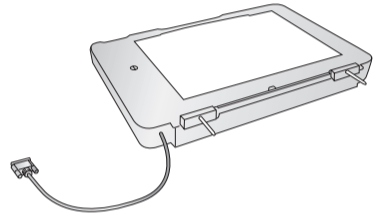
Before and after Dust Removal

Optional Equipment

Use these accessories to increase the versatility and productivity of your scanner.

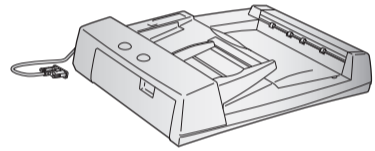
Transparency unit (B12B813362)

Lets you scan slides, filmstrips, and negatives in a variety of formats. Included with the Photo version of the scanner.



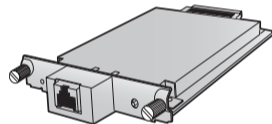
Automatic document feeder (B813212)

Lets you scan multipage documents, single- or double-sided. Useful for scanning text for editing.



Network Image Express interface card (B12B808393)

Connects the scanner to your network, making it accessible to multiple users.



You can purchase supplies and accessories from an Epson authorized reseller. To find the nearest reseller, call 1-800-GO-EPSON (1-800-463-7766). Or you can purchase online at www.epsonstore.com (U.S. sales) or www.epson.ca (Canadian sales).

Problems?

If your problem is listed here, try these suggestions.

The New Hardware Wizard appears on your screen.

If you have not yet installed the software, click **Cancel** and disconnect the scanner. Follow the steps on the other side of this sheet.

The bonus software included with your scanner doesn't work with Windows Vista

Contact the software vendors listed on the right for Windows Vista support information.

You see a message about a HI-SPEED USB device in Windows XP.

Click the **X** in the corner of the message to close it. Your scanner will work correctly.

You see an error message when you try to scan, or the scanner doesn't scan.

Make sure the scanner is plugged into your computer, connected to a power source, and turned on. If you just turned on the scanner, wait until the **Ready** light stops blinking and remains on.

If you're using a USB hub, try connecting the scanner directly to one of the USB ports on your computer.

Questions?

User's Guide

See your *User's Guide* to get more information about using your scanner software, enhancing image quality, scanning film, and installing optional equipment. You'll also find troubleshooting and maintenance instructions.



Electronic Reference Guide

To open the guide, double-click the **Expression 10000XL Reference Guide** icon on your desktop. The guide contains additional information about using your scanner.

On-screen Help for EPSON Scan and bonus software

Click the Help button or question mark that appears on the screen when you're using EPSON Scan or any of the bonus software that came with your scanner.

Epson Technical Support

• Internet Support

Visit Epson's support website at epson.com/support and select your product for solutions to common problems. You can download drivers and documentation, get FAQs and troubleshooting advice, or e-mail Epson with your questions.

• To Speak to a Support Representative

Dial (562) 276-4382 (U.S.) or (905) 709-3839 (Canada), 6 AM to 6 PM, Pacific Time, Monday through Friday. Toll or long distance charges may apply.

Before you call, please have the following information ready:

- Product name (Epson Expression 10000XL)
- Product serial number (located on the back of scanner)
- Proof of purchase (such as a store receipt) and date of purchase
- Computer configuration
- Description of the problem

Software Technical Support

Software	Telephone and Fax*	Online and E-mail
EPSON Scan	U.S.: (562) 276-4382 Canada: (905) 709-3839 6:00 AM to 6:00 PM, Pacific Time, Monday through Friday	epson.com/support
ABBYY FineReader Sprint	(510) 226-6717 9:00 AM to 6:00 PM, Pacific Time, Monday through Friday Fax: (510) 226-6069	www.abbyyusa.com support@abbyyusa.com
Adobe Photoshop Elements	(206) 675-6126 6:00 AM to 5:00 PM, Pacific Time, Monday through Friday (pay support)	www.adobe.com/support techdocs@adobe.com
Monaco Systems MonacoEZcolor	(978) 749-9944 9:00 AM to 5:00 PM, Eastern Time, Monday through Friday	www.monacosys.com/support.html support@monacosys.com
LaserSoft Imaging SilverFast (Photo version of the scanner only)	(941) 383-7496 9:00 AM to 5:30 PM, Eastern Time, Monday through Friday (pay support) Fax: (941) 387-7574	www.SilverFast.com support@SilverFast.com

* Toll or long distance charges may apply.

Epson is a registered trademark and Exceed Your Vision is a trademark of Seiko Epson Corporation. Expression is a registered trademark of Epson America, Inc.

General Notice: Other product names are for identification purposes only and may be trademarks of their respective owners. Epson disclaims any and all rights in those marks.

© 2007 Epson America, Inc. 2/07
Printed in USA