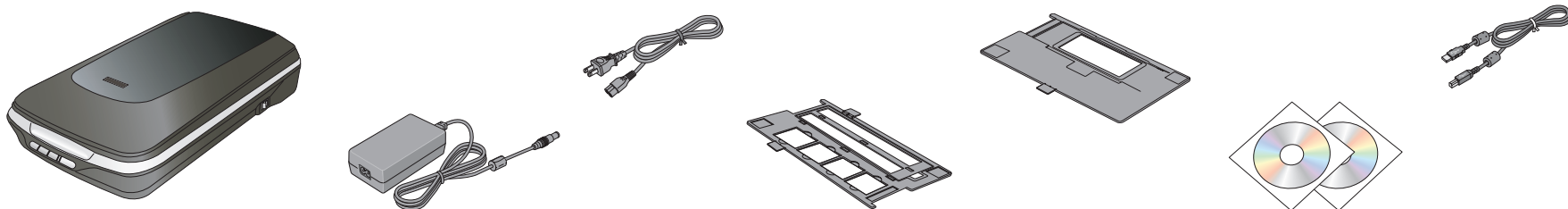




## 1 Unpack

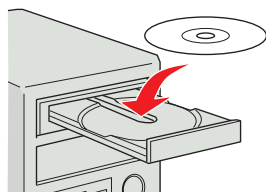
Unpack and remove protective tape.



## 2 Install software



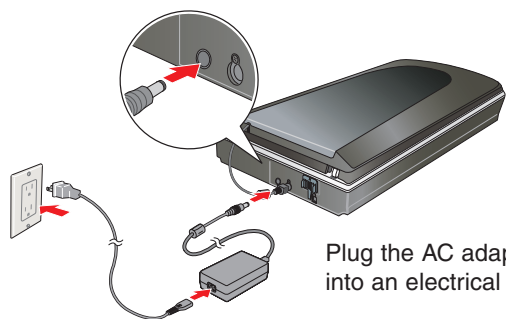
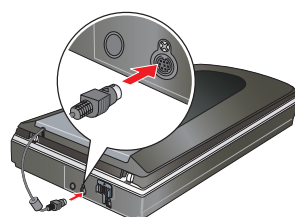
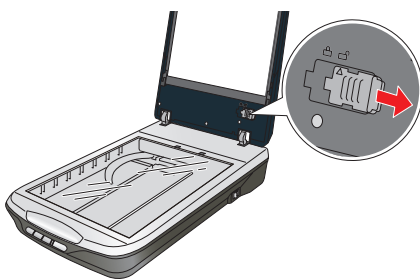
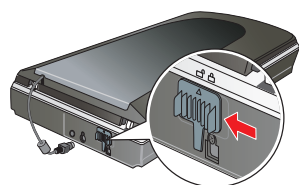
Do not connect the USB cable yet.



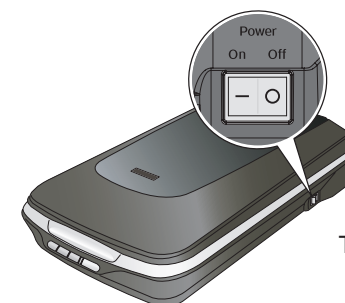
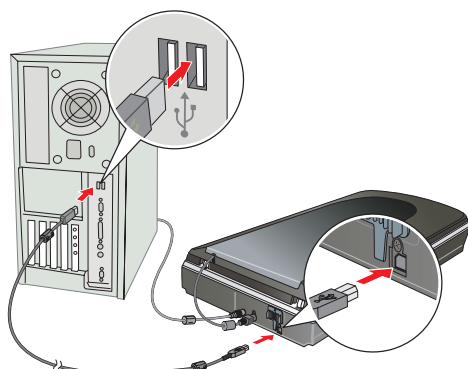
Click **Install** and follow the on-screen instructions.

**Windows Vista™:**  
Click **Run Epsetup.exe** when prompted.

## 3 Connect and turn on

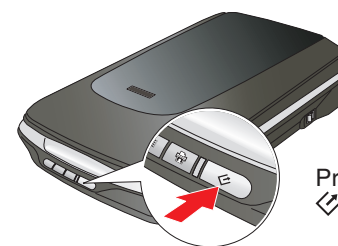
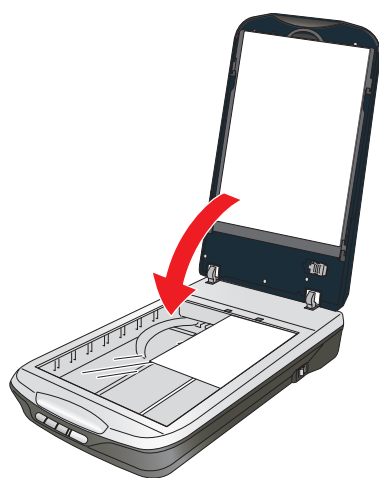
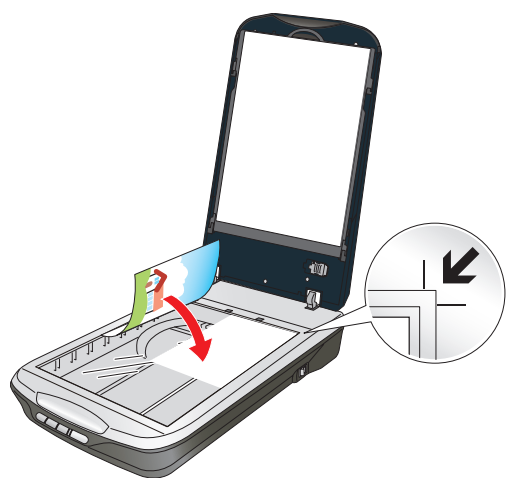


Plug the AC adapter into an electrical outlet.

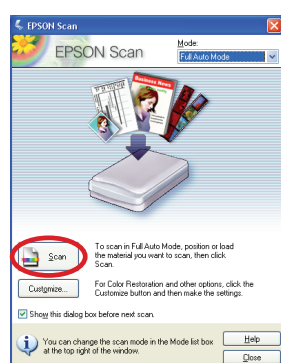


Turn on the scanner.

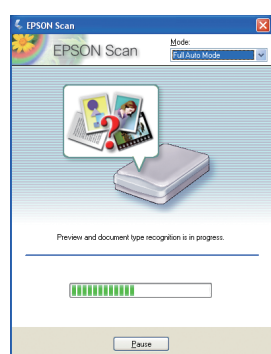
## 4 Scan a photo



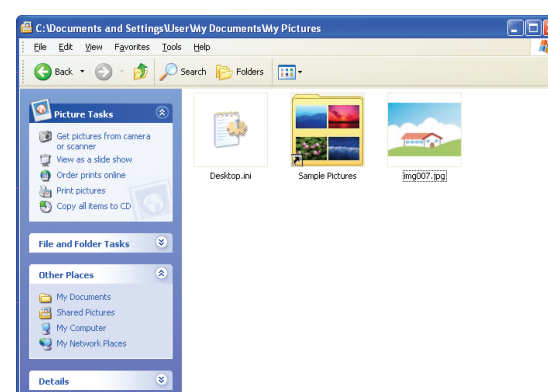
Press the **Start** button.



Click **Scan**.



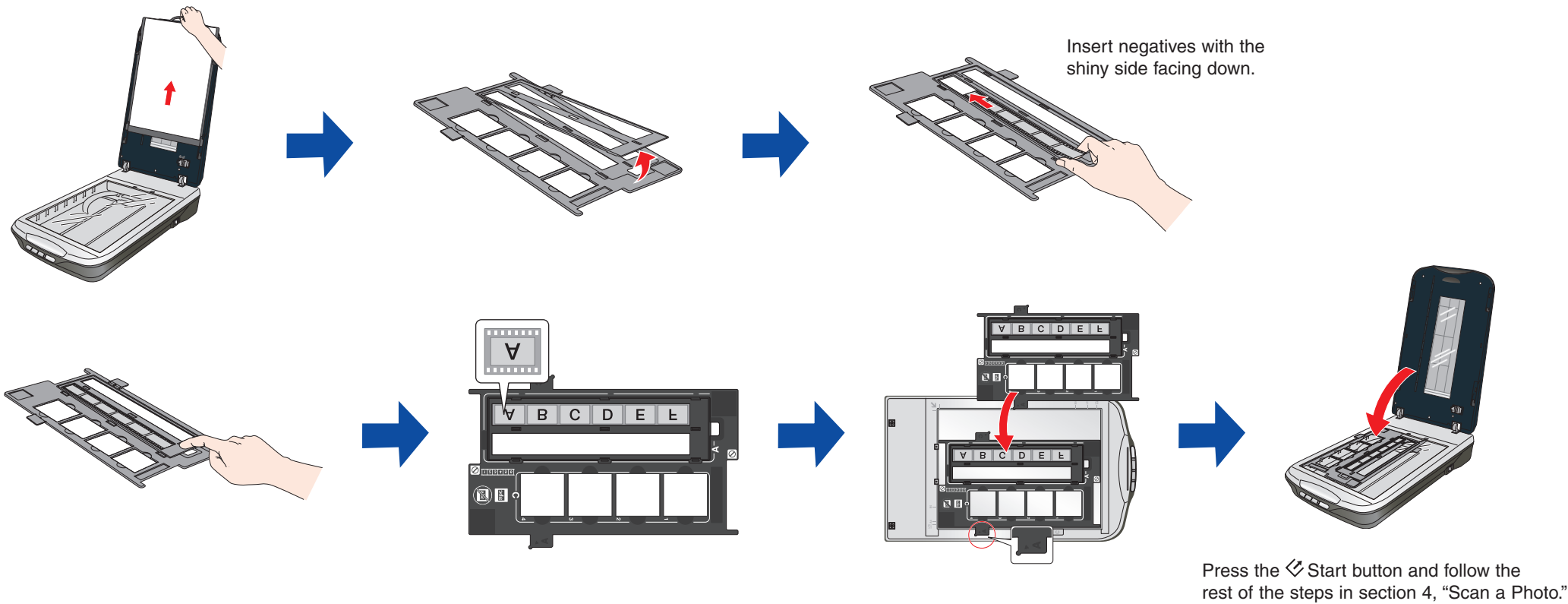
Epson Scan scans your photo in **Full Auto Mode**. Wait for your scan to finish.



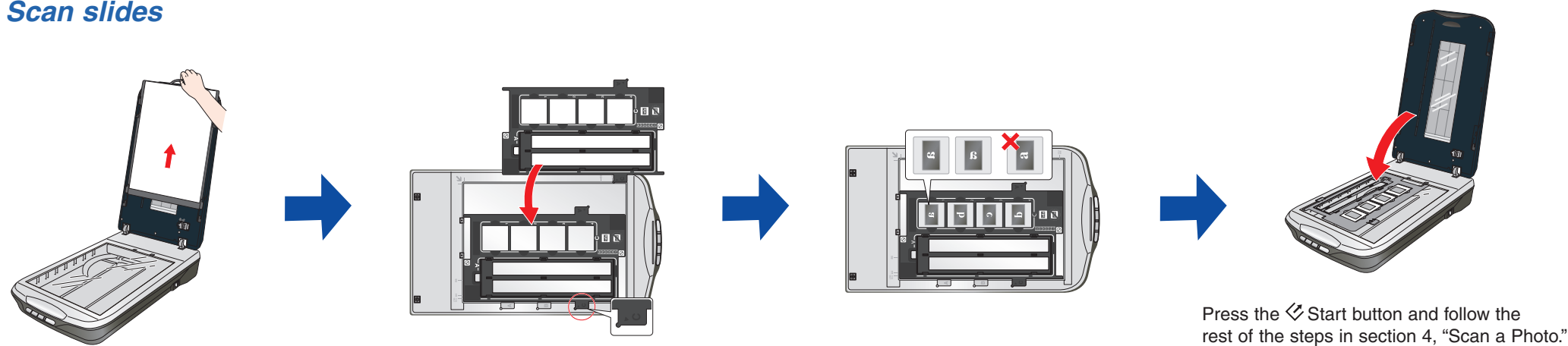
View your photo in **Pictures** or **My Pictures**.

# Do more

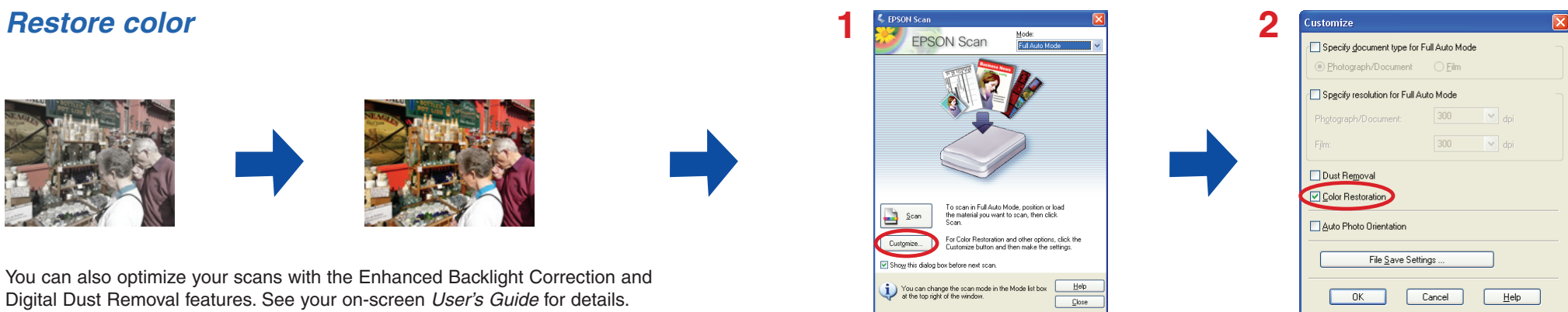
## Scan film



## Scan slides



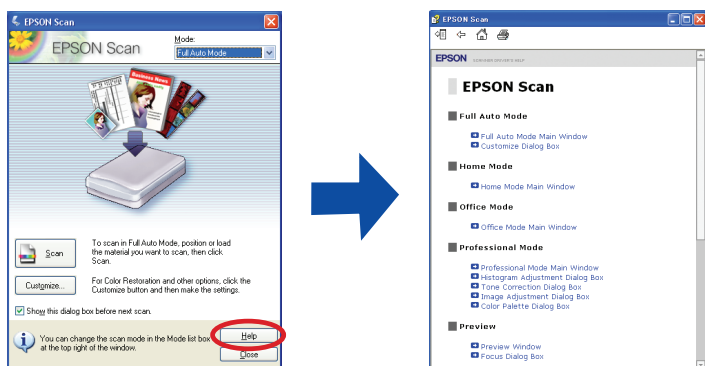
## Restore color



# ? Help

## Scanner Software Help

Click the **Help** button on your scanner software screen.



## User's Guide

Double-click the **Perfection V500P User's Guide** icon on your desktop.

## Epson Technical Support

### Internet Support

Visit Epson's support website at [epson.com/support](http://epson.com/support) and select your product for solutions to common problems for the Perfection V500 Photo. You can download drivers and documentation, get FAQs and troubleshooting advice, or e-mail Epson with your questions.

### Speak to a Support Representative

U.S.: (562) 276-4382, 6 AM to 6 PM, Pacific Time, Monday through Friday

Canada: (905) 709-3839, 6 AM to 6 PM, Pacific Time, Monday through Friday

Toll or long distance charges may apply.

## Software Technical Support

Adobe® Photoshop® Elements: Phone (800) 642-3623, [www.adobe.com/support](http://www.adobe.com/support)

ABBYY® FineReader®: (510) 226-6717, [www.abbyyusa.com](http://www.abbyyusa.com), [support@abbyyusa.com](mailto:support@abbyyusa.com)