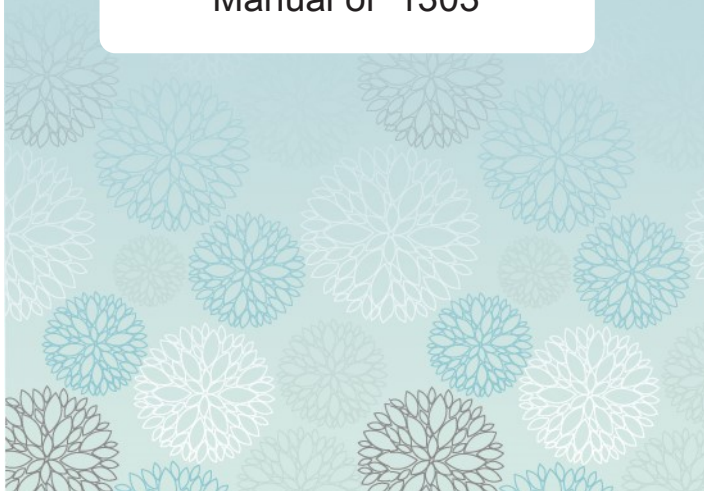




**Read Me Before Usage!**

**Manual of 1303**



# Table of Contents

<b>Chapter 1 Content Description</b>	—1
Section 1 On-Lap Monitor and Accessories	—1
Section 2 Notices of On-Lap Monitor	—3
Section 3 Safety Precautions	—4
Section 4 Safety Instructions	—4
Section 5 Product Maintenance	—4
Section 6 LCD Pixel Statement	—4
Section 7 Disposal of Electronic Equipment	—5
<b>Chapter 2 Installation Instructions</b>	—5
Section 1 Cover Stand and VESA 100 Kit Assembly	—5
Section 2 Connect the Video Cable and USB Touch and Power Cable	—7
<b>Chapter 3 Power On and Off the On-Lap Monitor</b>	—8
Section 1 Power On and Off the On-Lap Monitor	—8
Section 2 Monitor Display Setting	—8
Section 3 Windows 10/ 8.1/ 7 Touchscreen Setting	—9
Section 4 Windows 8.1/ 10 Touch Gesture Description	—10
<b>Chapter 4 Hot Keys and OSD Instructions</b>	—10
Section 1 Hot Keys & LED lights Description	—10
Section 2 OSD Description	—11
Section 3 Low Power Protection Warning	—13
<b>Chapter 5 Specification</b>	—13
Section 1 Plug and Play	—13
Section 2 Pin Assignment	—13
Section 3 Specification	—15
Section 4 Troubleshooting	—16



## 目 次

第一章 内容物の解説	- 17
その1. モニタ本体と付属品	- 17
その2. モニタに関する注意	- 19
その3. 安全に関する警告	- 20
その4. 安全に関する注意	- 20
その5. 製品のメンテナンスについて	- 20
その6. 液晶のドットについて	- 20
その7. 電子機器の廃棄について	- 20
第二章 インストールガイド	- 21
その1. 保護カバースタンドと VESA 100 スタンド組み立て	- 21
その2. ビデオケーブル、USB タッチ出力 / 電源ケーブルの接続	- 23
第三章 On-Lap の起動	- 24
その1. On-Lap の電源 On/Off 手順	- 24
その2. ディスプレイ設定	- 24
その3. Windows 10/8.1/7 タッチスクリーンモニタ設定	- 25
その4. Windows 8.1/ 10 タッチジェスチャに関する説明	- 25
第四章 ホットキー、LED、OSD 表示について	- 26
その1. ホットキー、LED、OSD 表示について	- 26
その2. OSD の解説	- 26
その3. 電力低下時の警告表示	- 28
第五章 製品仕様	- 28
その1. プラグアンドブレイ	- 28
その2. ピンアサインと初期設定について	- 28
その3. 仕様詳細	- 29
その4. トラブルシューティング	- 30

# Chapter 1 Content Description

## Section 1 On-Lap Monitor and Accessories

### 1. Parts Description

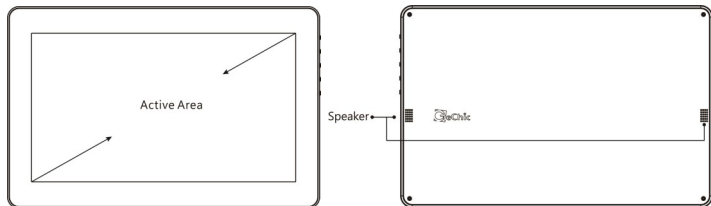


Fig.: On-Lap 1303 Front & Back

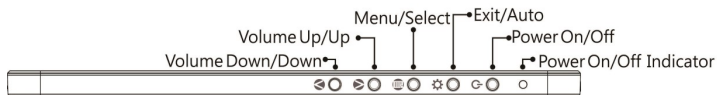


Fig.: 1303 buttons and LED light Description

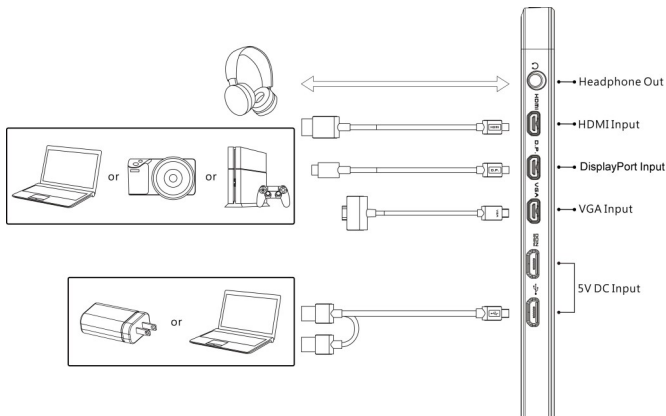


Fig.: On-Lap 1303H & 1303A Input & Output ports

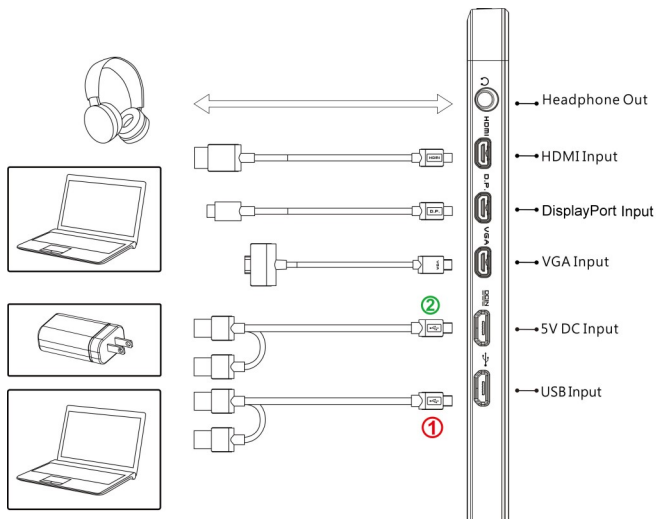


Fig.: On-Lap 1303I Input & Output ports

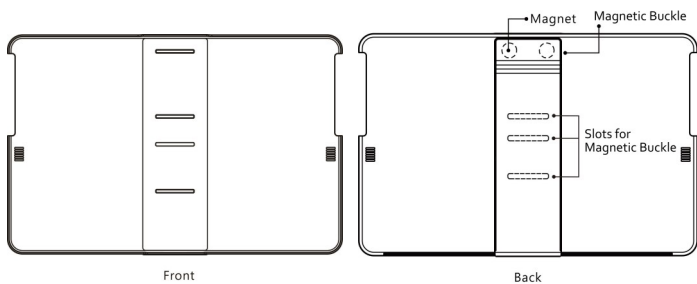


Fig.: Parts Description of Protective Cover

## 2. Package &amp; Accessories

Accessories	1303I	1303H	1303A
USB-A to micro-USB power and touch signal cable (1.2m)	Yes(2 pcs)	Yes(1 pcs)	Yes (1 pcs)
HDMI-A to Micro-HDMI Video Cable (1.2m)	Yes	Yes	Yes
On-Lap proprietary mini-Displayport cable	Optional	Optional	Optional
On-Lap proprietary VGA cable (1.2m)	Optional	Optional	Optional
Adapter(5V,Max.2A) 1 pcs	Yes	Yes	No
Cover1 pcs	Yes	Yes	Yes
Manual 1 pcs	Yes	Yes	Yes
HDMI-A to micro-HDMI Video Cable (2.1m)	Optional	Optional	Optional
Mini-HDMI to micro-HDMI Video Cable (2.1m)	Optional	Optional	Optional
On-Lap proprietary DisplayPort Cable (2.1m)	Optional	Optional	Optional
USB-A to micro-USB power and touch signal cable (2.1m)	Optional	Optional	Optional
1303 VESA 100 kit	Optional	Optional	Optional
Stand 4	Optional	Optional	Optional

## Section 2 Notice of On-Lap Monitor

- When plugging out the cables, do make sure the aspect of plug is horizontally—do not shake the port or plug forcefully. Any damage caused by wrong plug inserting is not included in warranty coverage.**
- The power input specification for On-Lap monitor is 5V 2A DC current . Input **power over than 5V** will cause breakdowns on monitor and this damage is not included in warranty coverage. It is suggested to connect both plugs of USB power cable to computer' s USB ports or manufacturer' s 5V-2A adapter.
- Unstable power input will interfere with touch signal, resulting inaccurate or failed touch function. If some high power consumption equipment share the power in the same electricity network, it may cause acute electricity fluctuation. It is suggested to use the USB port on laptop or manufacturer' s 5V-2A charger.
- Do not put touch monitor near to light blub, electric cord, or anything with great electromagnetic wave which may disturb projective capacitive touch monitor and cause touchscreen function abnormal.**

5. Please do not use sharp objects to touch the screen. Gently use the finger to touch or swipe on the screen. While touching the screen, please keep finger clean and dry. Do not press the screen forcefully.
6. Notice for Monitor Clean  
Disconnect power input before cleaning. Please use soft cloth to clean touch screen monitor. If something is hard to wipe off, please wet the cloth and wipe again. **Please do not use chlorine, alcohol, ammonia, detergent or other corroding solvents. These solvents may cause damage to the touch screen monitor or leave unremovable residue.**
7. Notice for Monitor Operation  
Avoid to expose the monitor directly under sunlight for long, which may result in damage. When monitor displays different images, image brightness may become slightly uneven.

### Section 3 Safety Precautions

1. The Product may be severely damaged from overturning or falling. Please do not place on a shaky or unstable table, cupboard or trolley. Do not use the On-Lap Monitor on a moving vehicle.
2. Do not place the items on a vibrating surface, vibration may cause damage to the internal components.
3. The product is not waterproof. Do not use the Product at or near a place with water.
4. Do not insert any object into the Product's slots or gaps.
5. Loudness warning! Avoid volume levels that may be harmful to your hearing. Please check the volume setting before you use the Audio Jack.
6. Please notice the plug in the box is applicable to its AC adapter only.

### Section 4 Safety Instructions

Please read this Manual carefully and observe the operation instructions and precautionary notes. Do retain this document for future reference.

### Section 5 Product Maintenance

Do not attempt to repair the Product yourself. Should any of the following conditions occur, please contact our maintenance personnel for service:

- 1) Unable to operate the Product after following the instructions in the Manual.
- 2) The Product falls and the outer casing is damaged.
- 3) Power cable or video cables is damaged.
- 4) Liquid infiltrated into the Product.

**Any normal wear and misuse, including but not limited to product failure due to normal usage, is not covered under warranty. Accident, damage, software or hardware changes, force majeure, or become in contact with liquid that result in product malfunction is not covered under warranty.**

### Section 6 LCD Pixel Statement

The On-Lap Monitor uses a high quality LCD panel. Nevertheless, there might be instances where defective pixels may occur; however, this will not affect the normal functioning of the Product.

## Section 7 Disposal of Electronic Equipment

The electronic equipment and batteries should not be disposed of with household waste but should be left at an appropriate collection point for recycling.



## Chapter 2 Installation Instructions

### Section 1 Cover Stand and VESA 100 Kit Assembly

#### 1 Install Cover Stand

1-1 Take Monitor out: Hold both sides of the cover's rim by thumbs and then push the monitor from back by the fingers. When putting the monitor back to the Cover Stand, first put the bottom of Monitor in and then push the top part of monitor into the cover.

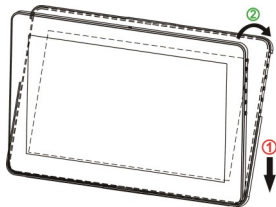
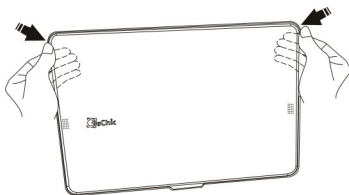


Fig : Take Monitor out from Cover Stand      Fig : Put Monitor in Cover Stand

**Caution:** In order to avoid dropping or breaking the monitor, please keep the back of monitor outward the cover Stand when not in usage.

1-2 Take the magnetic buckle off first. There are 4 slots for the magnetic buckle on the back of Cover Stand. Put Magnetic Buckle in one of the slots and the Cover Stand is set.

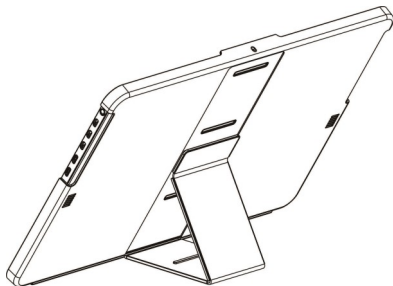


Fig : Put Magnetic Buckle in slot to set the Cover Stand

## 2 VESA 100 Kit Installation (Optional)

First Screw the VESA100 Kit in VESA100 arm or camera cradle head/ tripod. Place the Monitor into VESA 100 Kit, as shown in Fig, and secure the Monitor by screwing in.

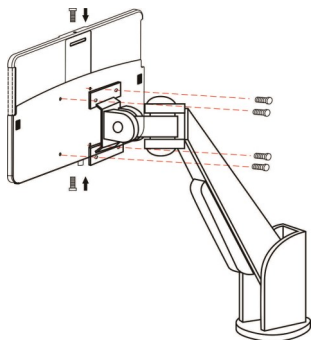


Fig : Screw the VESA100 kit in VESA100 arm. Put the Monitor in and secure it by screws.

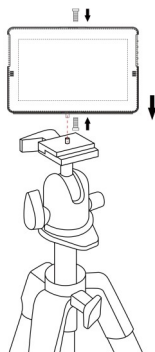


Fig : Screw the VESA100 kit in camera cradle head. Put the Monitor in and secure it by screws.

## 3 Install Stand 4 (optional)

### Step 1 Assemble Stand 4

Select the desired angle placement to assemble Stand 4. During assembly, check if X plate is properly inserted onto slot.



Fig : Install Stand 4

### Step 2 Place On-Lap monitor onto Stand 4.

Stand 4 is positioned at the bottom center of monitor.

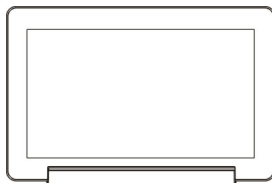


Fig : Place 1303 in Stand 4

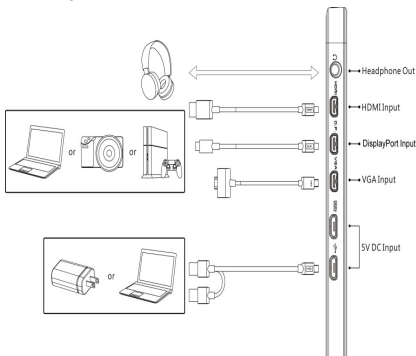
## Section 2 Connect the Video Cable and USB Touch Power Cable

### 1. Connection method for On-Lap 1303H & 1303A

Connect USB Power cable first and then connect Video cable. USB power Cable can be connected to USB port of laptop or 5V 2A USB charger. Voice is transmitted by micro-HDMI or DisplayPort ports.

**VGA does not support voice transmission.**

**PS: if one USB port of laptop does not supply enough power. Please insert another USB plug to laptop, which supply double power.**

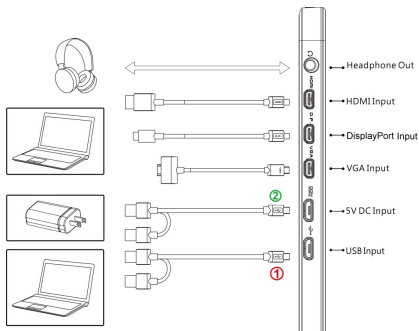




### 2. Connection method for On Lap 1303I

① Connect USB Touch Output and Power Cable's Micro USB (B type) connector to On-Lap 1303I's Micro USB port. Connect the other end, USB connector to USB port of laptop. With this connection, laptop will provide power and touch signal to On-Lap 1303I. If one USB port on laptop is unable to provide enough power, please connect the two USB connectors to two USB ports on laptop, this can provide double power.

② Or connect the second USB power cable to the 5V 2A charger.


After then connect Video cable. Only when micro-HDMI or DisplayPort is connected will the Monitor have sound. **VGA does not support voice transmission.**



**Caution:** Micro USB port  can transmit both touch signal and power, but Power port **DCIN** can only transmit power. If Micro USB port  is not connect to USB port of laptop, touch function can not be enabled.


## Chapter 3 Power On and Off the On-Lap Monitor

### Section 1 Power On and Off the On-Lap

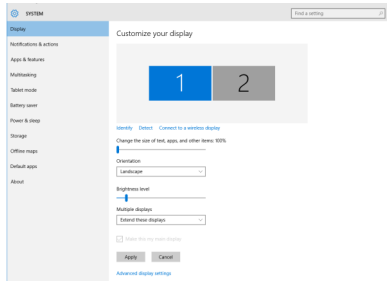
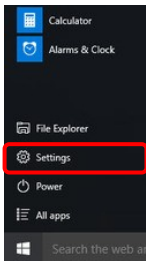
1. From Off state to On state: Press Power Button  to activate On/Off.
2. First time use: When Micro USB to USB touch signal and power connect to USB port on computer or 5V DC Charger, On-Lap will automatically start and detect video signal to automatically display video. (Connection method shall refer to Chapter 2 Section 2)

### Section 2 Monitor Display Setting

1. Set Extended Display Mode-**Windows 10 System**

Press  and choose "Settings" > select "System" >select "Display" . Then choose " Extend these displays" at Multiple displays.

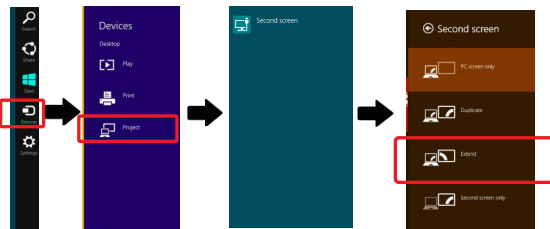
Refer to 3.Set Extended Display Mode-**Windows 7 System** for resolution.




2. Set Extended Display Mode-**Windows 8.1 System**

Select directly from right side of screen [Devices] ->select [Project]->select [2<sup>nd</sup> Monitor] -> select [Extend Mode]

For screen resolution setting please refer to the followings.

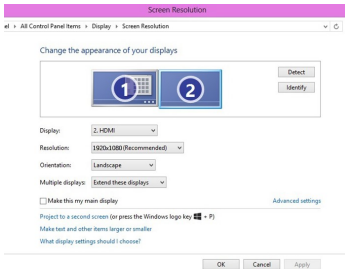


### 3. Set Extended Display Mode-Windows 7 System

- Click on  icon
- Click on **Control Panel > Appearance and Personalization**
- Click on **Display > Connect to an external display.**

Normally Display ① is the laptop's monitor, Display ② is the external monitor. Click on **Detect** if you are unsure.

- At **Display**, select "2.HDMI" (digital video) or "2. display device: VGA" (analog video) for **Display**
- **Select Resolution "1920x1080" for 1303H& 1303I. Select Resolution "1366x768" for 1303A.**
- Select "Landscape" or "Portrait" for **Orientation**.
- Select "Extend these displays" for **Multiple display**, and drag Display 2 to the right side of Display 1. For Duplicated mode, select "Duplicate these displays".
- Select OK and exit after saving the settings.



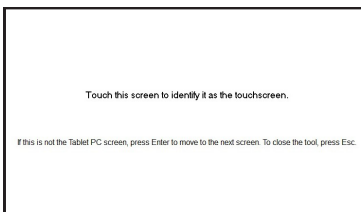
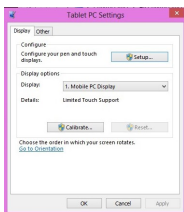
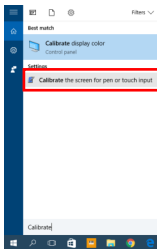
## Section 3 Windows 10/8.1/7 Touchscreen Setting

**(Notice: Only 1303I supports Touch Function)**

If you find the cursor acts wrongly, please calibrate the monitors at Windows system. **Please connect 1303I to laptop first, if not, the calibration can't be begun.**

In Windows 7, Select 'Tablet PC Setting' of Control Panel to calibrate touch input. In Windows 8.1/10, search "Calibrate the screen for pen or touch input" on your PC.

As Fig., please select "Setting (S)", when Windows message appears on the screen of On-Lap 1303I, follow the direction to touch the screen and the setting is complete.



### Notice of operation system compliance

On-Lap 1303I supports Windows10/8.1/7 . You can plug & touch on Windows 10/8.1/7 without any driver installation

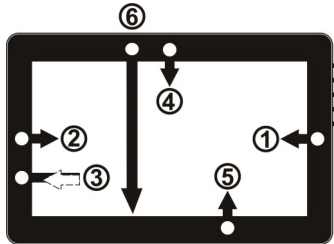
For Windows 8/8.1 before 2015/10/15, which contains different touch order, may not recognize 1303I. Please upgrade your Windows, or email Gechic for 1303I firmware change.

For Linux and Android developer, please active" HID multitouch panels" while establishing kernel, and the external touch monitor can be supported. Or email Gechic for Linux driver for setting in Linux/Android system.

## Section 4 Windows 8.1/ 10 Touch Gesture Description

Common Touch Gesture Introduction:

- Use finger to swipe in from edge:
  - Swipe in from the right edge of the screen (Arrow 1) : Open the five charms – Search, Share, Start, Devices, and Settings
  - Swipe in from the left edge of the screen (Arrow 2) : Switch between apps
  - Swipe in from the left edge of the screen then out toward the left edge of the screen (Arrow 3): Display all apps
  - Swipe in from the top edge (Arrow 4) or bottom edge (Arrow 5): Display commands of app, like Add New, Reminder, etc.
  - With touch, drag the app from the top edge of screen (Arrow 6) to the bottom of the screen: Close app
- Select item: Tap on the item to open. This function is similar to clicking on mouse.
- Press and hold the item for a few seconds then release: Display item information. This function is similar to right-clicking on mouse.
- Zoom in and out: Touch the item with two fingers then move fingers toward each other (pinch) or away from each other (stretch).
- Slide finger on the screen, horizontally or vertically, to move through content. This function is similar to scrolling with a mouse.



## Chapter 4 Hot Keys and OSD Instructions

### Section 1 Hot Keys and LED Light Description


**\*Notice:** If need to adjust "Increase/up" or "Decrease/down" continuously , press the button and hold. Do not press two buttons at the same time, due it may cause no response or fault response.


**LED Lights Description :**


It shows green light when turn on On-Lap Monitor and shows red light when stand by.


## Hot Keys Description

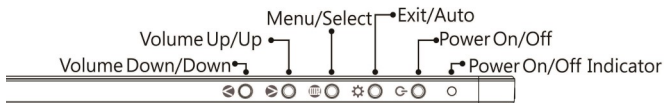
 **Power:** Press the Power Button can power on/off the Monitor.

 **Exit/Auto Adjustment:** In the OSD panel, press the Exit Button to exit and back to the previous page. When there is no OSD menu, press this Button will activate automatic adjustment function (only pertains to analog VGA signal)

 **Menu/Select:** Press the Menu Button to launch OSD panel.


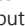
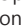

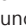





 **Increase Volume/UP:** Press this Button to increase the volume of speakers. If the OSD menu is launched, press this button will move up or move left the list. Press and hold for automatic continuous increase.

 **Decrease Volume/Down:** Press this Button to decrease the volume of speakers. If the OSD menu is launched, press this button will move down or move right the list. Press and hold for automatic continuous decrease.



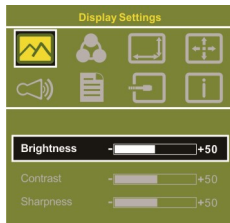
## Section 2 OSD Description

### 1. Basic Button Operation

Press  button to launch the OSD panel. Press  or  to view the functions. To adjust a certain function, press  to launch it. If the selected function consists of sub-menu, press  or  again to view the sub-menu. When the desired function is highlighted, press  to launch it. Press  or  to change the setting. To exit, press  to exit. Repeat the preceding steps to adjust other setting.

### 2. Display Settings

As shown in Fig., after Display Settings is launched, can adjust **Brightness**, **Contrast**, and **Sharpness**.



### 3. Color Setting

As show in Fig., after Color Settings is launched, can adjust **Color Temp** and **Color Effect** to adjust screen color setting.

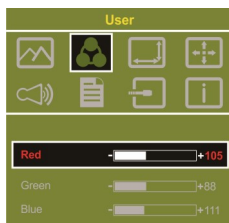
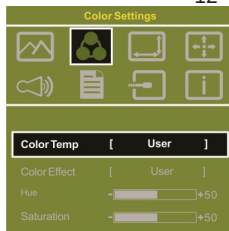
**Hue setting** can make the image color lean toward green or purple

**Saturation setting** can make saturation more vivid or more black and white.

At Color Temperature, select "User", can adjust RGB color setting, please refer to Fig. Select

"Cool" can increase the blue saturation of the image. Select "Warm" can increase the red saturation of the image. At Color Effect, select "Standard", "Game", "Movie", "Photo" or "Vivid"

Select "Standard" can adjust the Hue and Saturation of Red/Blue/Green/Cyan/Yellow/Magenta



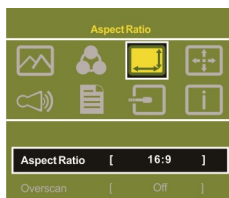
### 4. Aspect Ratio

Please refer to Fig. Suggested setting is 16:9.

When HDMI image is 4:3 format, can select 4:3, make image not enlarge to 16:9 and change shape. Using VGA image input won't have this function

Notice: When use 4:3 setting, the left and right sides of On-Lap 1303 will show black frame. Because its not full screen image display, thus image location and press signal location will not be the same, will not be able to press the correct location

Overscan: Only when input HDMI Video signal (ex. 1080P/720P), can use such function. Use this function can adjust the image scan area.



### 5. Manual Image Adjust

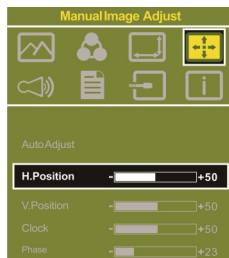
Auto Adjust: Only when input VGA signal can use such function. Will automatically adjust VGA setting

H.Position: Moves the display area left and right .

V.Position: Moves the display area up and down

Clock: Adjust the pixel clock for user's preference

Phase: Adjust the pixel phase for user's preference

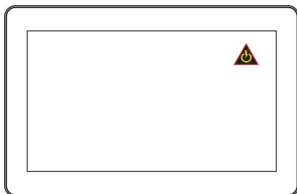


6. Audio: Adjust volume or select mute
7. OSD Menu
  - OSD Timer: Adjust OSD Time
  - OSD H. POS: Moves OSD left and right
  - OSD V. POS: Moves OSD up and down
  - OSD Transparency: Makes OSD transparent
  - Language: Select OSD language
  - Reset: Restore to factory setting
8. Input Source: Select VGA signal source, HDMI signal, DisplayPort signal or Auto Detect
9. Information: Display factory version

### Section 3 Low Power Protection Warning

If the volume setting is too high, the power requirement may be greater than the power provided by computer or external 5V DC Charger. At this time, the Low Power Protection Warning will appear. Please reduce the volume immediately. Connect the two USB connectors of Micro USB Touch and Power Cable to the two USB ports on computer. If the volume is not reduced in time, the Monitor will decrease the volume and brightness automatically.

Fig.: Low voltage warning shown at upper right corner on screen.



## Chapter 5 Specification

### Section 1 Plug and Play

The On-Lap Monitor conforms to VESA DDC standard and supports VESA DDC2. DDC2B is a bi-directional data channel based on I<sup>2</sup>C protocol. The host can request EDID information over the DDC2B channel. The On-Lap Monitor is able to inform the host system of its identity, and depending on the level of DDC used, communicate additional information about its display capabilities.

### Section 2 Pin Assignment

1. HDMI Connector Pinout



Pin	Name	Pin	Name
1	TMDS Data2+	11	TMDS Clock Shield
2	TMDS Data2 Shield	12	TMDS Clock -
3	TMDS Data2 -	13	CEC
4	TMDS Data1+	14	Reserved
5	TMDS Data1 Shield	15	SCL (I <sup>2</sup> C Serial Clock for DDC)
6	TMDS Data1 -	16	SDA (I <sup>2</sup> C Serial Data Line for DDC)
7	TMDS Data0+	17	DDC/CEC Ground
8	TMDS Data0 Shield	18	+5 V Power
9	TMDS Data0 -	19	Hot Plug Detect
10	TMDS Clock+		

## 2. mini-DisplayPort Connector Pinout

Pin	Name	Pin	Name	Pin	Name
1	GND	8	GND	15	ML_Lane2(p)
2	Hot Plug Detect	9	ML_Lane1(p)	16	AUX_CH(p)
3	ML_Lane0(p)	10	ML_Lane3(p)	17	ML_Lane2(n)
4	CONFIG1	11	ML_Lane1(n)	18	AUX_CH(n)
5	ML_Lane0(n)	12	ML_Lane3(n)	19	GND
6	CONFIG2	13	GND	20	DP PWR
7	GND	14	GND		

Pin : mini-DisplayPort Connector  
(Connect mini-DisplayPort)



## 3. VGA Connector Pinout

Pin No.	Name	Pin No.	Name	Pin No.	Name
1	RED	6	RGND	11	NC
2	GREEN	7	GGND	12	SDA
3	BLUE	8	BGND	13	HSYNC
4	NC	9	+5V	14	VSYNC
5	GND	10	SGND	15	SCL

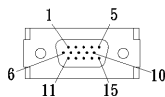


Fig.: VGA connector  
(connect to PC' s  
VGA port)

## 4. USB Connector Pinout

Pin No.	Name
1	Vcc (+5V)
2	D+
3	D-
4	Ground

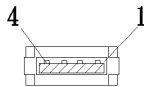



Fig. : USB Connector

## Section 3 Specification

Model	On-Lap1303I	On-Lap1303H	On-Lap1303A
Panel	13.3" TFT IPS(16:9 Wide) LED Backlight	13.3" TFT IPS(16:9 Wide)LED Backlight	13.3" TFT TN(16:9 Wide)LED Backlight
Resolution/ Color depth	1920x1080/ 16.7M colors	1920x1080/ 16.7M colors	1366x768/ 262K colors
Viewing Angle (Typical)	178° (H)/178° (V)	178° (H)/178° (V)	45° /20° /45° /45° (Up/Down/Left/Right)
Contrast Ratio (Typical)	700:1	700:1	500:1
Response Time (Typical)	14(ms)	14(ms)	8(ms)
Touch Technology	Projected capacitive touch screen; 10-point multi-touch; Input by fingers • Support Win-dows10/8.1,Win7	No touch screen	
Screen coating	Touch screen hardness $\geq$ 7H	No touch screen	
Resolution Specification	1920*1080(60Hz/50Hz),1600*900(60Hz),1440*900(60Hz),1366*768(60Hz),1280*1024(60Hz),1280*960(60Hz),1280*800(60Hz/50Hz),1280*768(60Hz/50Hz),1280*720(60Hz/50Hz),1024*768(60Hz),		
HDMI Video Display Capabilities	1080P(60Hz/50Hz);1080i(30Hz/25Hz); 720P(60Hz/50Hz); (HDCP Compliant)		
Speakers	2x 1.0W(Max.) (Rated Impedance 4 $\Omega$ at 2KHz)		
Rating Voltage/ Current	5V $\overline{\text{---}}$ 2A	5V $\overline{\text{---}}$ 2A	5V $\overline{\text{---}}$ 1.4A
Dimension (Typical)	348mm*225mm*10.8mm(Monitor) 354mm*231mm*19.5mm(Cover)	348mm*225mm*10.5mm(Monitor) 354mm*231mm*19.5mm(Cover)	348mm*225mm*10.5mm(Monitor) 354mm*231mm*19.5mm(Cover)
Weight(Typical)	900g (Monitor) 320g(Cover)	599g (Monitor) 320g(Cover)	599g (Monitor) 320g(Cover)
Safety	      		

## Section 4 Trouble Shooting

### 1. Image or Audio output troubles

Problem	Solution
No response when finger touches on the monitor	<ol style="list-style-type: none"> <li>1. Check if USB Touch Power Cable plug ① is connected to computer's USB port. The ② USB plug of USB Touch Power Cable cannot transmit touch signal. (Refer to Chapter 2&gt; Section 2)</li> <li>2. Check if the computer installs Window 10 or Windows 7.</li> </ol>
While touching On-Lap 1303I, the cursor works on the main display, not 1303I.	Please set up from "Tablet PC Setting" (Windows 10/7) to calibrate the touch monitor. (Refer to Chapter 3> Section 3)
Touch function malfunctions sometime. Function recovers after restarting	USB signal transmission might be broken off because USB port may not provide sufficient power. Please connect both USB-A plugs into USB ports of laptop/5V-2A adapter.
No image or OSD displays "No Signal" warning	<ol style="list-style-type: none"> <li>1. Check if Power On/Off Indicator shows green light. If not, it means no power connection. Please refer to user manual instruction to connect power.</li> <li>2. Check if VGA/HDMI Video Cable is connected between On-Lap's connector port and computer's connector port.</li> <li>3. Check if Micro HDMI Video Cable connector is accidentally connected to the VGA port/DisplayPort port on On-Lap.</li> <li>4. Please adjust "Brightness" and "Contrast" in OSD setting.</li> </ol>
Image flicks or blinks and recover later	Please avoid pulling video cable. Please connect both Y-type USB-A plugs into USB ports to make sure the power supply is sufficient.
Image disappears, too big, too small, or can't be aligned center.	The problem normally happens via VGA input. Please adjust phase, clock, V.Position, H..Position by OSD setting.
Monitor has image but no sound	<ol style="list-style-type: none"> <li>1. Press "Up"  button to <b>increase audio level</b>.</li> <li>2. Use of VGA input will not have audio signal.</li> <li>3. Check Sound Setting of the computer. Choose output to HDMI device.</li> <li>4. 1303 only supports audio out by phone jack. The phone jack doesn't support audio in function.</li> </ol>

2. The unavailability of "Duplicate these displays" or "Extend these displays" in Display setting may be limited by the graphics chip of the laptop or have the graphic chip features limited due to the power saving mode of the laptop or have the graphic chip driver updated. Please consult your laptop manufacturer or graphic chip manufacturer.