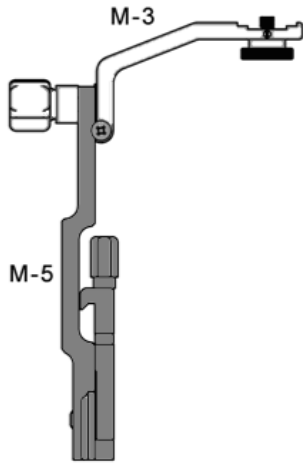


About the M-5

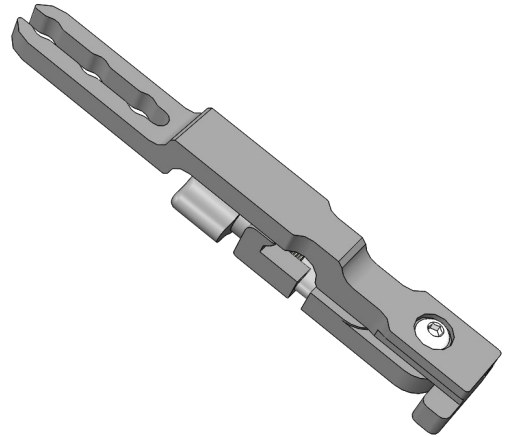
The M-5 Old Style Wimberley Head Bracket is one of the components of the Wimberley Modular Flash Bracket System. It is included in the following combo bracket.



F-4
(Old WH Bracket)

Wimberley

M-5 Wimberley Head (version I) Flash Bracket Module



Weight: 4.4 oz
Dimensions (Overall L x W x H): 6.8 x 0.8 x 0.3 in
Materials: Anodized 6061 Aluminum, stainless steel fasteners

Package Contents:

- M-5: Old-style Wimberley Head Module (Qty 1)

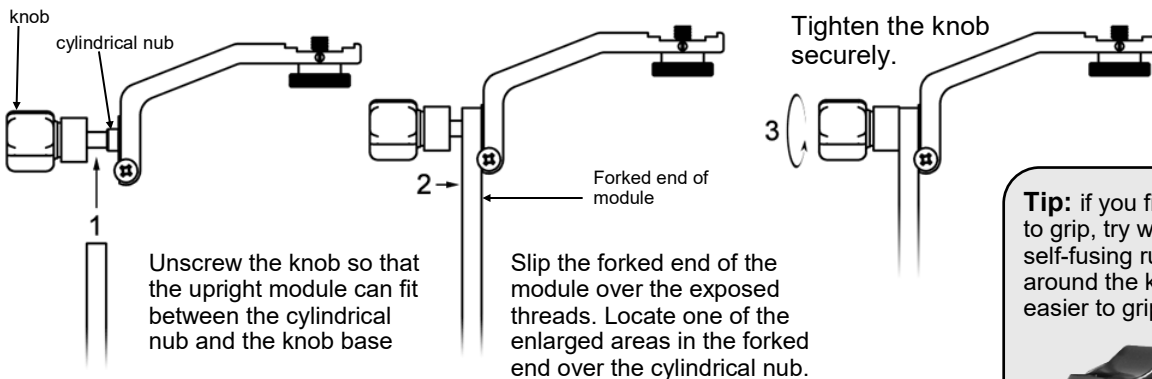
Made in USA

Wimberley, Inc. Phone: 1-434-529-8385
1750 Broadway St Toll Free: 1-888-665-2746 (USA & Canada)
Charlottesville, VA
22902 USA www.tripodhead.com info@tripodhead.com

5 Year Warranty – See www.tripodhead.com/warranty.cfm for complete details

Connecting Flash Bracket Modules:

(The figure below shows the connection between M-3 and upright module; the same principle applies for other module connections.)



Tip: if you find the metal knobs difficult to grip, try wrapping several layers of self-fusing rubber grip tape (**3M 2155**) around the knob to cushion it and make it easier to grip in the field.



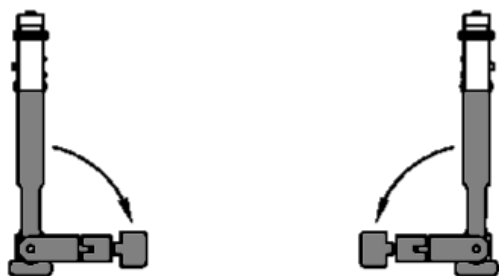
Feel free to contact us if you have any questions.

Instructions continued on back>>

Attaching the Bracket to the Old-style Wimberley Head:

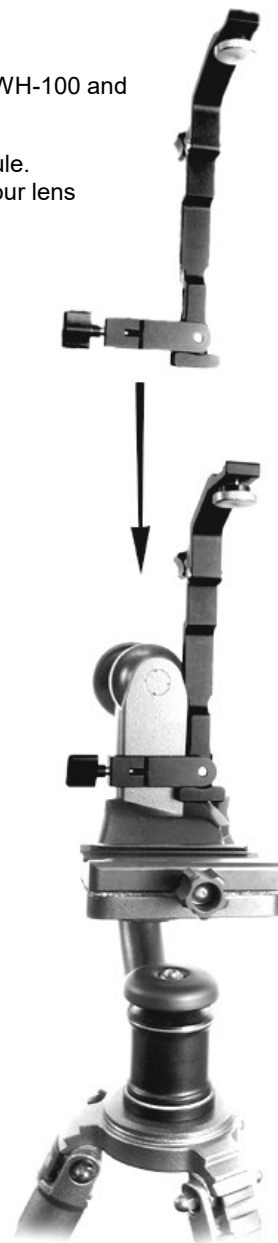
The M-5 bracket is designed to attach to the swing arm of the original Wimberley Head, version I models WH-100 and WH-101. This bracket can stay on the Head when swapping lenses.

1. Pivot the moving jaw with the knob to either side, perpendicular to the upright portion of the M-5 module. Choose the option that feels best to you and allows you to comfortably access the focusing ring on your lens.



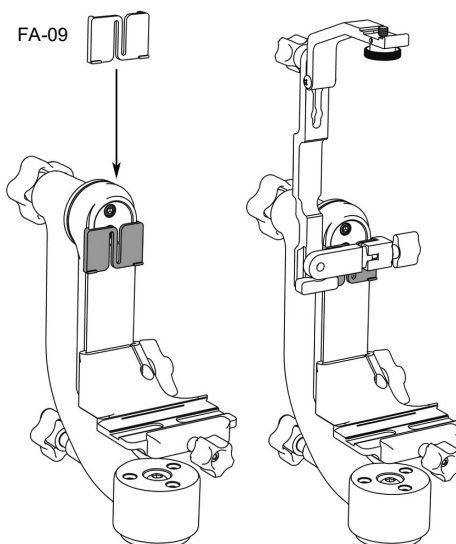
Pivoting arm swings to either side

2. Loosen the bottom knob until it will fit on arm dovetail.
3. Slide the bracket down the swing arm from the top. Turn the M-5 screw knob to tighten the clamp jaws and secure the bracket on the swing arm.



Using the F-4 on the WH-200:

The WH-200 has a different dovetail on the arm and thus is not natively compatible with the F-4. To remedy this, slide the FA-09 onto the arm of the WH-200. The built-in spring design grips the WH-200 Arm so that the FA-09 remains attached when not using a flash bracket.



Thank you for your interest in Wimberley products. If you have any questions or comments please feel free to contact us.