

BCPM-1/A2



PASSIVE / ACTIVE BELT CLIP
PERSONAL MONITOR
AMPLIFIER



PRODUCT
MANUAL

THANK YOU FOR CHOOSING POLSEN.

The BCPM-1 and BCPM-A2 personal monitor amplifiers are ideal for musicians who stay in one spot while they perform, like keyboardists and drummers. These road-worthy yet lightweight monitors are hardwired to the audio source and will deliver the feed you need without excessive cabling or clutter. Your monitor control will be right at your belt when you need it.

The BCPM-1 is a passive monitor and requires no external power. Plug it in, and you're ready to go. Since it's a passive monitor, the BCPM-1 will deliver only the maximum volume that's being sent from the mixer. The BCPM-A2 is active and runs on two AAA batteries. It features a built-in amplifier for extra volume when it's needed.

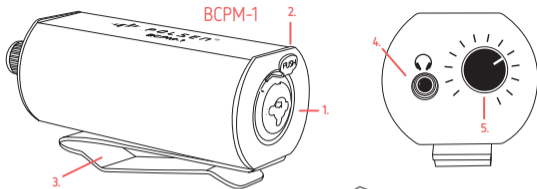
PRECAUTIONS

- Please read and follow these instructions, and keep this manual in a safe place.
- Exposure to high sound levels can cause permanent hearing loss. Avoid listening at high volumes for extended periods of time.
- Clean this product with only a soft, dry cloth
- Make sure that this product is intact and that there are no missing parts.
- All images are for illustrative purposes only.

OVERVIEW

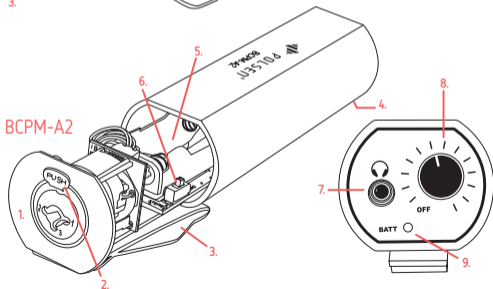
BCPM-1

1. Combo input jack
2. XLR release tab
3. Belt clip
4. 1/8 in. headphone output
5. Volume knob



BCPM-A2

1. Combo input jack
2. XLR release tab
3. Belt clip
4. Battery compartment release
5. Battery compartment
6. Mono/stereo switch
7. 1/8 in. headphone output
8. On/off switch and volume knob
9. Power indicator LED



INSTALLING THE BATTERIES (BCPM-A2)

1. Press the battery compartment release, and push the top end of the unit to slide out the battery compartment.
2. Install two AAA batteries with the orientation indicated in the battery compartment.
3. Press the battery compartment back into the chassis until the battery release locks shut.



MONO OR STEREO SELECTOR (BCPM-A2)

Use the mono/stereo switch the signal you're receiving.

- If you're receiving a stereo signal from the mixer, select stereo.
- If you're receiving a mono track from the mixer, select mono.



Operating the BCPM-1 / BCPM-A2

Important! To avoid a sudden burst of sound, turn the volume all the way down, and then gradually increase it.

1. Connect the monitor to the mixer with a balanced cable that terminates in either a TRS 1/4 in. or XLR jack.
2. Plug headphones into the headphone output.
3. Turn on the unit. The green LED power indicator will glow when the unit is on. (BCPM-A2 only)
4. Use the volume knob to adjust the headphone volume.
5. Attach the monitor to your belt, or where it won't interfere with your performance.

SPECIFICATIONS

BCPM-1

Input Combo XLR and TRS 1/4 in. female
Output 1/8 in. (3.5 mm) TRS stereo female
Power Passive
Maximum Input Level +24 dBu
Minimum Input Level +24 dBu
Input Impedance 10 k Ω
Output Impedance 0.5 Ω
S/N Ratio >110 dB
Distortion (THD) <0.001%
Function Control Volume knob
Dimensions (H x W x L)
1.4 x 1.6 x 4 in. (3.5 x 4.1 x 10.2 cm)
Weight 5.4 oz. (153 g)

BCPM-A2

Input Combo XLR and TRS 1/4 in. female
Output 1/8 in. (3.5 mm) TRS stereo female
Power AAA batteries (x2)
Maximum Input Level Balanced: 0 dBu / Unbalanced: +24 dBu
Minimum Input Level +8.5 dBu
Input Impedance XLR: 40 k Ω / 1/4 in.: 10 k Ω
Output Impedance 0.5 Ω
S/N Ratio >95 dB
Distortion (THD) <0.005%
Function Control Volume knob / Power switch
Stereo/mono selector
Dimensions (H x W x L) 1.6 x 1.4 x 5.25 in. (4.1 x 3.6 x 13.3 cm)
Weight 6.8 oz. (194 g) without batteries

ONE-YEAR LIMITED WARRANTY

This Polsen product is warranted to the original purchaser to be free from defects in materials and workmanship under normal consumer use for a period of one (1) year from the original purchase date or thirty (30) days after replacement, whichever occurs later. The warranty provider's responsibility with respect to this limited warranty shall be limited solely to repair or replacement, at the provider's discretion, of any product that fails during normal use of this product in its intended manner and in its intended environment. Inoperability of the product or part(s) shall be determined by the warranty provider. If the product has been discontinued, the warranty provider reserves the right to replace it with a model of equivalent quality and function.

This warranty does not cover damage or defect caused by misuse, neglect, accident, alteration, abuse, improper installation or maintenance. EXCEPT AS PROVIDED HEREIN, THE WARRANTY PROVIDER MAKES NEITHER ANY EXPRESS WARRANTIES NOR ANY IMPLIED WARRANTIES, INCLUDING BUT NOT LIMITED TO ANY IMPLIED WARRANTY OF MERCHANTABILITY OR FITNESS FOR A PARTICULAR PURPOSE. This warranty provides you with specific legal rights, and you may also have additional rights that vary from state to state.

To obtain warranty coverage, contact the Polsen Customer Service Department to obtain a return merchandise authorization ("RMA") number, and return the defective product to Polsen along with the RMA number and proof of purchase. Shipment of the defective product is at the purchaser's own risk and expense.

For more information or to arrange service, visit www.polsenaudio.com or call Customer Service at 212-594-2353.

Product warranty provided by the Gradus Group.
www.gradusgroup.com

