

- USER MANUAL
- MANUEL DE L'UTILISATEUR
- BENUTZERHANDBUCH
- HANDLEIDING
- MANUALE D'USO
- MANUAL DEL USUARIO
- MANUAL DO UTILIZADOR
- РУКОВОДСТВО ПОЛЬЗОВАТЕЛЯ
- ΕΓΧΕΙΡΙΔΙΟ ΧΡΗΣΗΣ
- KULLANIM KILAVUZU
- INSTRUKCJA OBSŁUGI

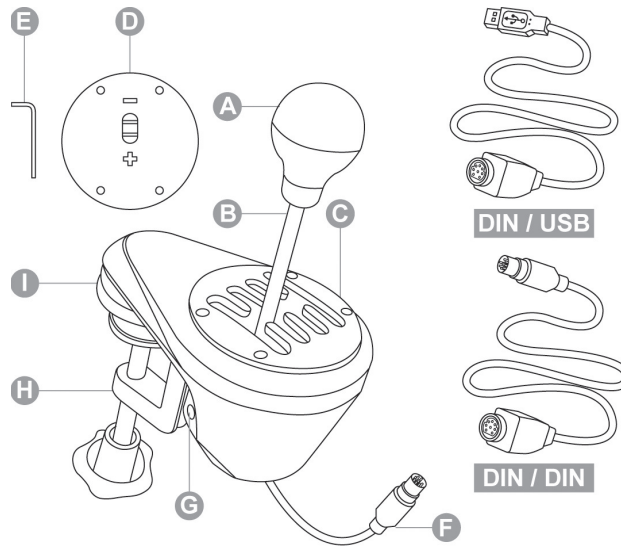
- دليل المستخدم

THRUSTMASTER®





PlayStation®3 – PlayStation®4 – Xbox One™ – PC
User Manual



TECHNICAL FEATURES

- A Removable gear shift knob
(not installed by default)
 - B Stick
 - C Adjustable "H-pattern (7+1)" shift plate
(installed by default)
 - D Adjustable "Sequential (+/-)" shift plate
(not installed by default)
 - E 2.5 mm Allen key (included)
 - F Cable and DIN connector
 - G Internal tensioning screw
 - H Adjustable clamping system
 - I "Screw threads" for cockpit mounting
- DIN / USB Detachable DIN / USB cable
DIN / DIN Detachable DIN / DIN cable

ENGLISH
FRANÇAIS
DEUTSCH
NEDERLANDS
ITALIANO
ESPAÑOL
PORTUGUÊS
РУССКИЙ
ΕΛΛΗΝΙΚΑ
TÜRKÇE
POLSKI

WARNING

Before using this product, be sure to read through this manual carefully. Retain this manual for future reference.



Warning – Electric shock

- * Keep this product in a dry place, and do not expose it to dust or sunlight.
- * Respect the direction of insertion for connectors.
- * Do not twist or pull on the connectors and cables.
- * Do not spill liquid on the product or its connector.
- * Do not short-circuit the product.
- * Do not dismantle this product (apart from the possible adjustments described in this manual), do not attempt to burn the product and do not expose the product to high temperatures.



Warning – Injuries due to repetitive movements

Playing with a shifter may result in muscle and joint pains. To avoid any problems:

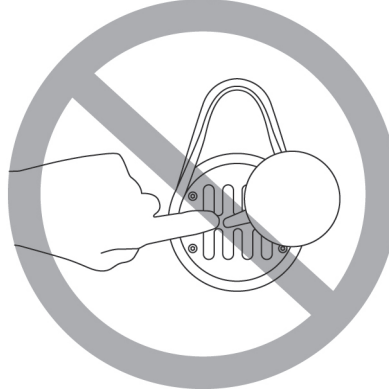
- * Avoid playing for extended periods of time.
- * Take a 10 to 15 minute break after each hour of playing.
- * Should you experience fatigue or pain in your hands, wrists or arms, stop playing and rest for a few hours before starting to play again.
- * If the symptoms or pains described above persist when you resume playing, stop playing and consult your doctor.
- * Verify that the base of the shifter is properly mounted, as described in the instructions found in this manual.



Warning – Pinching risk in shift plate openings

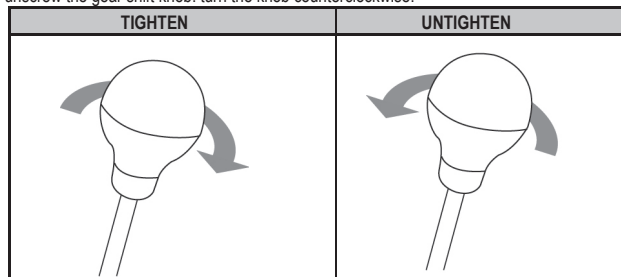
- * Keep out of the reach of children.
- * When playing a game, never place your fingers (or any other parts of your body) in the openings in the shift plates.

NEVER



INSTALLING THE GEAR SHIFT KNOB

1. To screw the gear shift knob (**A**) onto its stick (**B**): turn the gear shift knob clockwise.
2. To unscrew the gear shift knob: turn the knob counterclockwise.



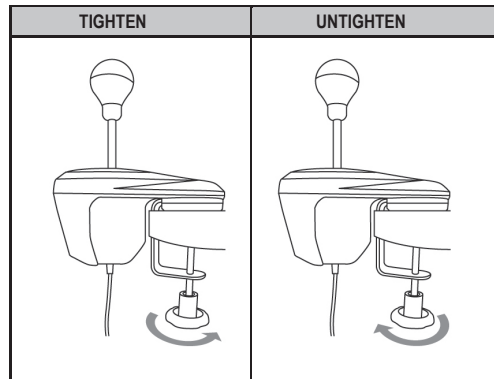
MOUNTING THE SHIFTER

Mounting is optimized for any type of support:

- **Tables, desks or shelves** from 1 to 55 mm in thickness, via the clamping system (**H**).
- **Cockpits**, via the built-in "screw threads" (the clamping system is removable).

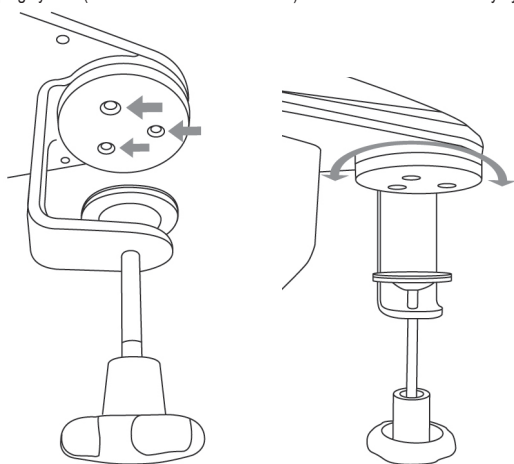
Mounting the shifter on a table or desk

1. Place the nose of the shifter on a table or other flat surface.
2. To tighten: turn the clamping wheel counterclockwise.
3. To untighten: turn the clamping wheel clockwise.

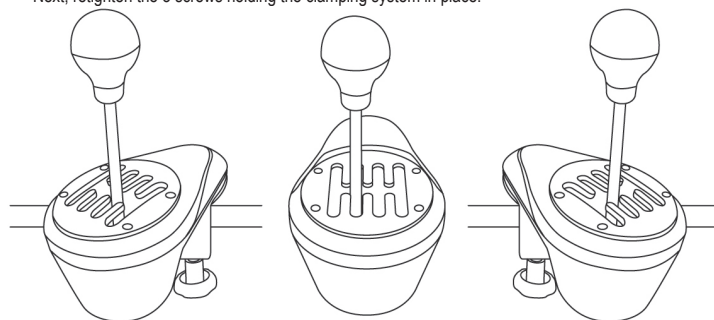


Positioning and rotating the clamping system (can be adjusted by 360°)

1. Using the included 2.5 mm Allen key (*E*), **very slightly unscrew** the 3 screws holding the clamping system (*H*) in place.
The clamping system (and therefore the entire shifter) can now be rotated manually by 360°.

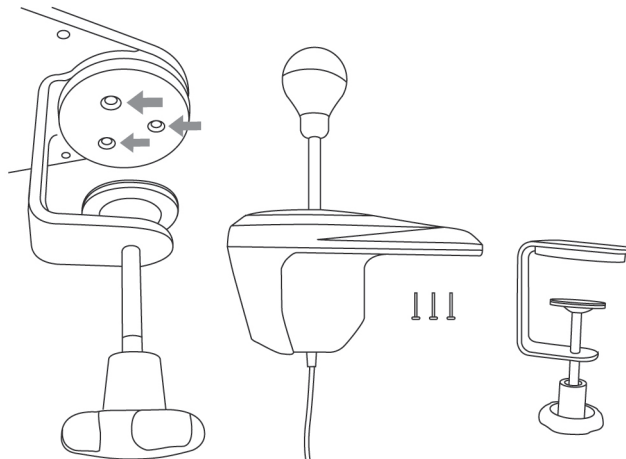


2. Select your preferred position along the 360° of rotation (3 examples are shown below, among the many other possibilities available).
Next, retighten the 3 screws holding the clamping system in place.

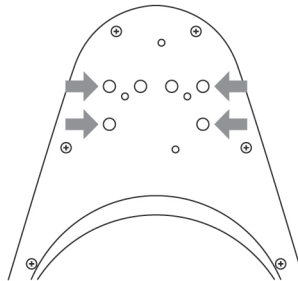


Mounting the shifter in a cockpit

1. Using the included 2.5 mm Allen key (**E**), completely unscrew and remove the 3 screws holding the clamping system (**H**) in place. Detach the clamping system from the shifter.



2. Once the clamping system has been removed, screw 2 "M6" screws (not included) into the cockpit shelf, and into 2 of the 4 small "screw threads" (**I**) located on the underside of the shifter's nose.

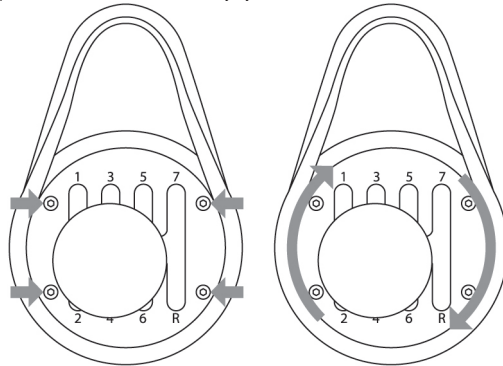


Be sure not to use "M6" screws that are too long, which may pierce and damage the upper part of the shifter's nose.

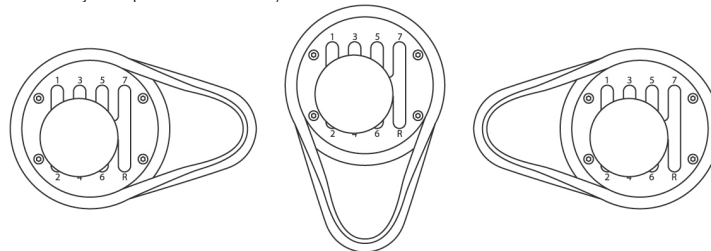
A shifter mounting template for cockpits is available at <http://ts.thrustmaster.com> (in the 'Wheels/TH8A Shifter/Manual / Help file' section).

POSITIONING AND ROTATING THE SHIFT PLATES (CAN BE ADJUSTED BY 360°)

1. Using the included 2.5 mm Allen key (*E*), slightly unscrew the 4 screws holding the shift plate (*C or D*) in place.
The shift plate can now be rotated manually by 360°.



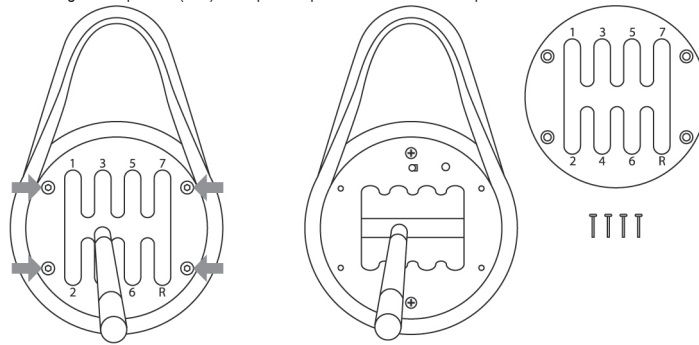
2. Select your preferred position along the 360° of rotation (3 examples are shown below, among the many other possibilities available).



3. Retighten the 4 screws holding the shift plate in place.

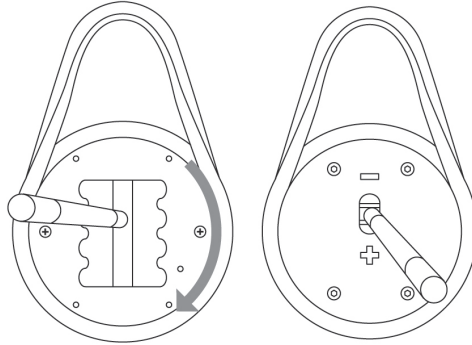
SWITCHING FROM THE "H-PATTERN (7+1)" SHIFT PLATE TO THE "SEQUENTIAL (+/-)" SHIFT PLATE

1. Unscrew (counterclockwise) and remove the gear shift knob (A).
2. Using the included 2.5 mm Allen key (E), completely unscrew and remove the 4 screws holding the "H-pattern (7+1)" shift plate in place. Remove the shift plate.

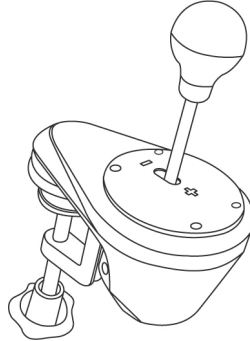


During this procedure, take care not to accidentally let any of the screws fall inside the internal mechanism.

3. Manually rotate the internal structure 90° to the right (clockwise).
Next, install the "Sequential (+/-)" shift plate.

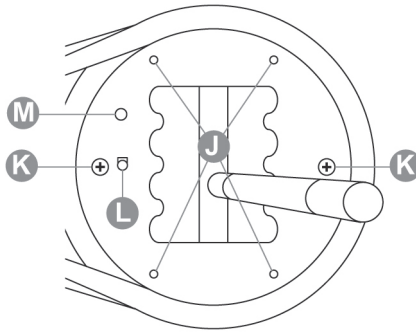


4. Using the included 2.5 mm Allen key (**E**), replace and completely retighten the 4 screws holding the "Sequential (+/-)" shift plate in place. Screw the gear shift knob back on (clockwise).



Carry out this procedure in reverse to replace the "H-pattern (7+1)" shift plate.

Notes regarding the internal structure's top cover:



J: 4 "screw threads" to attach the shift plates (**C or D**).

K: 2 screws which hold the internal structure in place (do not unscrew).

L: Button which automatically detects the type of shift plate used (**C or D**). Is pressed **automatically** when the "Sequential (+/-)" shift plate is installed. Keep this area clean in order to avoid any detection problems.

M: Slot for easier positioning of the shift plates.

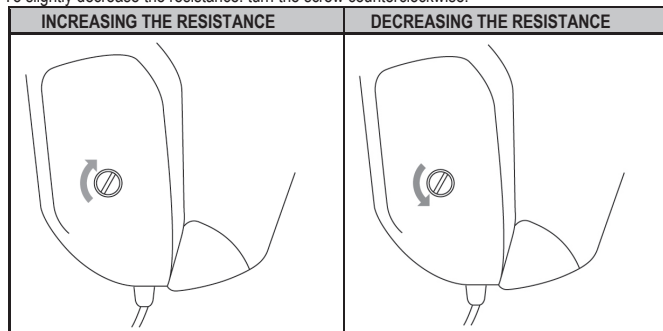
ADJUSTING THE GEAR SHIFT RESISTANCE

* Only applies to the "H-pattern (7+1)" shift plate.

* Before making any adjustments, the "H-pattern (7+1)" shift plate **must** be installed in its original position (please see the diagram below).



1. Using a large flat head screwdriver, place the screwdriver in the head of the internal tensioning screw (**G**) located in the lower left section of the shifter's housing.
2. To slightly increase the resistance: turn the screw clockwise.
3. To slightly decrease the resistance: turn the screw counterclockwise.



2 full turns are enough to go from one extreme to the other.



To avoid damaging the system:

- Stop tightening the screw when you feel strong resistance.
- Stop untightening the screw if the stick becomes loose and wobbly.

SETUP INSTRUCTIONS FOR GAME CONSOLES

PLAYSTATION®3

= With all games for PS3™, always connect(*) the TH8A shifter directly to one of the PS3™'s USB ports (NOT to the Thrustmaster racing wheel's base).

- Connect the TH8A shifter's DIN connector to the DIN / USB cable.
- Connect the TH8A shifter to one of your PS3™'s USB ports.
- Start the game.

The TH8A shifter can then operate with either the H-PATTERN (7+1) or SEQUENTIAL (+/-) shift plates.

(*) Important recommendations for the PS3™ system (applicable only if using a Thrustmaster racing wheel featuring a built-in shifter connector)

- When using the TH8A shifter's SEQUENTIAL (+/-) shift plate, you can also connect the shifter at the back of the racing wheel using the detachable DIN / DIN cable. The TH8A shifter is then connected to the racing wheel's UP (= R1) and DOWN (= L1) paddle shifters. With this racing wheel, the TH8A shifter's SEQUENTIAL (+/-) shift plate functions with 100% of racing games PS3™ that are compatible with the racing wheel.

- Some games enable you to **use two TH8A shifters simultaneously**:
 - One TH8A shifter with an H-PATTERN (7+1) shift plate, connected to the PS3™'s USB port™
 - + One TH8A shifter with a SEQUENTIAL (+/-) shift plate, connected to the back of the racing wheel

* A list of games for PS3™ that are compatible with the TH8A shifter is available here: <http://ts.thrustmaster.com> (in the 'Playstation / Wheel / TH8A Shifter' section). This list is updated regularly.

* On PS3™ systems, we recommend that you do not use a USB hub when connecting the racing wheel or TH8A shifter to the games console; connect the device directly to the PS3™'s USB ports.

* Some games require that you install the latest available updates for the TH8A shifter to function correctly (your games console must be connected to the internet).

PLAYSTATION®4

**According to the PS4™ game or the racing wheel that you are using:
= Connect(*) the TH8A shifter directly to the PS4™'s USB port**

- Connect the TH8A shifter's DIN connector to the DIN / USB cable.
- Connect the TH8A shifter to one of your PS4™'s USB ports.
- Start the game.

The TH8A shifter can then operate with either the H-PATTERN (7+1) or SEQUENTIAL (+/-) shift plates.

Or

= Connect(*) the TH8A shifter directly to the Thrustmaster racing wheel's base

(only applicable if your Thrustmaster racing wheel features a built-in shifter connector)

- Connect the TH8A shifter's DIN connector to the DIN / DIN detachable cable.
- Connect the TH8A shifter to the shifter connector located at the back of the racing wheel's base.
- Connect your racing wheel, then start the game.

The TH8A shifter can then operate with either the H-PATTERN (7+1) or SEQUENTIAL (+/-) shift plates.

(*) Important recommendations for the PS4™ system (applicable only if using a Thrustmaster racing wheel featuring a built-in shifter connector)

- **When using the TH8A shifter's SEQUENTIAL (+/-) shift plate, you can also connect the shifter at the back of the racing wheel using the detachable DIN / DIN cable.** The TH8A shifter is then connected to the racing wheel's UP (= R1) and DOWN (= L1) paddle shifters.

With this racing wheel, the TH8A shifter's SEQUENTIAL (+ /-) shift plate functions with 100% of racing games for PS4™ that are compatible with the racing wheel.

- Some games enable you to **use two TH8A shifters simultaneously:**

- One TH8A shifter with an H-PATTERN (7+1) shift plate, connected to the PS4's USB port™
- + One TH8A shifter with a SEQUENTIAL (+/-) shift plate, connected to the back of the racing wheel

* A list of games for PS4™ that are compatible with the TH8A shifter and the relevant connection instructions(*) (which vary according to games) are available here: <http://ts.thrustmaster.com> (in the 'Playstation / Wheel / TH8A Shifter' section). This list is updated regularly.

* On PS4™ systems, we recommend that you do not use a USB hub when connecting the racing wheel or the TH8A shifter; connect the device directly to the PS4™'s USB ports.

* Some games require that you install the latest available updates for the TH8A shifter to function correctly (your games console must be connected to the internet).

ENGLISH

FRANÇAIS

DEUTSCH

NEDERLANDS

ITALIANO

ESPAÑOL

PORTUGUÊS

РУССКИЙ

ΕΛΛΗΝΙΚΑ

TÜRKÇE

POLSKI

XBOX ONE

= With all Xbox One games, always connect the TH8A shifter directly to the Thrustmaster racing wheel's base (NEVER to the game console's USB port).

- Connect the TH8A shifter's DIN connector to the DIN / DIN detachable cable.
 - Connect the TH8A shifter to the shifter connector located at the back of the racing wheel's base. - Connect your racing wheel, then start the game.
- The TH8A shifter can then operate with either the H-PATTERN (7+1) or SEQUENTIAL (+/-) shift plates.

Important note about the Xbox One:

When using the TH8A shifter's SEQUENTIAL (+/-) shift plate, the shifter is connected to the racing wheel's UP (= RB) and DOWN (= LB) paddle shifters.

When using the TH8A shifter's SEQUENTIAL (+/-) shift plate, the TH8A shifter functions with 100% of racing games for Xbox One that are compatible with the Thrustmaster racing wheel for Xbox One.

* A list of games for Xbox One that are compatible with the TH8A shifter is available here:
<http://ts.thrustmaster.com> (in the 'Xbox One / Wheel / TH8A Shifter' section). This list is updated regularly.

* Some games require that you install the latest available updates for the TH8A shifter to function correctly (your games console must be connected to the internet).



To ensure compatibility of your Thrustmaster racing wheel for Xbox One with the TH8A shifter, you may be required to update the racing wheel's firmware with the latest version available via PC here: <http://ts.thrustmaster.com> (in the 'Updates and downloads / Xbox One / Wheel / TX Racing Wheel / Driver / Firmware' section).

SETUP INSTRUCTIONS FOR PC

= With all PC games(*), always connect the TH8A shifter directly to one of the PC's USB ports.

- Connect the TH8A shifter's **DIN** connector to the **DIN / USB** cable.
- Connect the TH8A shifter to one of your PC's USB ports.
- When connected to a PC, the TH8A shifter is a Plug & Play device and is automatically detected and installed.
- The device then appears as 'T500 RS Gear Shift' in the Windows® Control Panel.
- Click Properties to test and view the device's features.
- Start the game.

You are now ready to race!

(* **Important recommendations for PCs** (applicable only if using a Thrustmaster racing wheel featuring a built-in shifter connector)

- **When using the TH8A shifter's SEQUENTIAL (+/-) shift plate, you can also connect the shifter at the back of the racing wheel using the detachable DIN / DIN cable.** The TH8A shifter is then connected to the racing wheel's UP (= 2) and DOWN (= 1) paddle shifters. With this racing wheel, the TH8A shifter's SEQUENTIAL (+ /-) shift plate functions with 100% of racing games for PC that are compatible with the racing wheel.

- Some games enable you to **use two TH8A shifters simultaneously:**

- + One TH8A shifter with an H-PATTERN (7+1) shift plate, connected to the PC's USB port
- + One TH8A shifter with a SEQUENTIAL (+/-) shift plate, connected to the back of the racing wheel

* On PC, the Thrustmaster shifter is compatible with:

- all games supporting MULTI-USB and shifters.
- all wheels on the market.

* We recommend connecting your racing wheel and TH8A shifter directly to your PC's USB 2.0 (not USB 3.0) ports, without using a hub.

* For some PC games, you **must** install the latest available game updates in order for the TH8A shifter to function properly.

* For some PC games (in order to avoid any conflicts between the wheel and the TH8A shifter), it may be necessary:

- not to map anything onto the wheel's gear shift paddles.
- to enable the "Hold button for gear" function.

ENGLISH

FRANÇAIS

DEUTSCH

NEDERLANDS

ITALIANO

ESPAÑOL

PORTUGUÊS

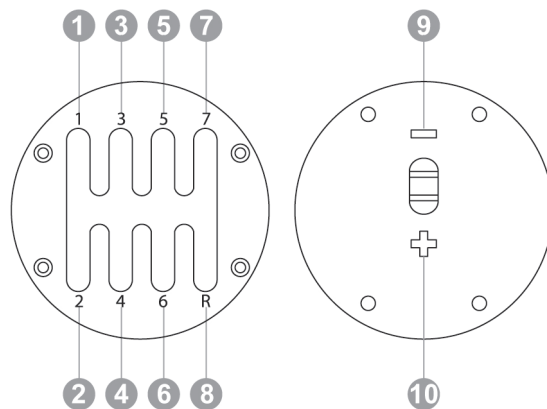
РУССКИЙ

ΕΛΛΗΝΙΚΑ

TÜRKÇE

POLSKI

MAPPING ON PC



SOFTWARE PACKAGE

A software package for PC is available here:
<http://ts.thrustmaster.com> (in the 'PC / Wheel / TH8A Shifter / Driver / Firmware' section).

- After installing the software package, you will be able to:
 - * check your TH8A shifter's firmware version.
 - * update the firmware (if necessary) with the latest available version.
 - * use the "BOOTLOADER Method" (to restore your shifter, in the event of loss of firmware).
 - * access a customized Control Panel (game controller) on PC.
 - * on PC, enjoy the ANALOG mode (handbrake)

ADVANCED CALIBRATION SOFTWARE

The TH8A gear shift calibration is automatically carried out.
An advanced calibration software application for PC is also available here: <http://ts.thrustmaster.com> (in the 'Wheels / TH8A Shifter' section). It allows you to adjust the gear shift travel to your convenience.

When the settings are complete, they are instantly saved into the internal gear shift memory (and can be used on PS3™, PS4™, Xbox One and PC).

SUMMARY INSTRUCTIONS FOR CONNECTING THE TH8A SHIFTER TO VARIOUS SYSTEMS

	Connect the TH8A shifter
PS3™	Always(*) directly to the PS3™ (USB)
PS4™	According to the game or racing wheel (*) : - Either directly to the PS4™ system (USB) - Or at the back of the racing wheel (DIN)
XBOX ONE	Always at the back of the racing wheel (DIN)
PC	Always(*) directly to the PC (USB)

(*) For more information regarding any exceptions, please refer to the **important recommendations** sections on the manual's relevant pages.

WARNING

* Never connect the TH8A shifter directly to any device other than a Thrustmaster racing wheel, even if the device features an identical DIN connector. This could cause damage to the TH8A shifter or the other device.

TROUBLESHOOTING

- * My shifter is not functioning correctly, or seems to be improperly calibrated:
 - Turn off your computer or console, disconnect your shifter, reconnect it and then restart your game.
 - In your game, under "Options/Controller", select or set up the most appropriate configuration.
 - Refer to your game's user manual or online help for more information.
- Various help topics and tips (not included in this manual), a list of compatible games, etc. are available on the <http://ts.thrustmaster.com> website, under **Technical Support**.
- On Xbox One, to ensure compatibility of your Thrustmaster racing wheel for Xbox One with the TH8A shifter, you may be required to update the racing wheel's firmware with the latest version available via PC here: <http://ts.thrustmaster.com> (in the 'Updates and downloads / Xbox One / Wheel / TX Racing Wheel / Driver / Firmware' section).

Consumer warranty information

Worldwide, Guillemot Corporation S.A. (hereinafter "Guillemot") warrants to the consumer that this Thrustmaster product shall be free from defects in materials and workmanship, for a warranty period which corresponds to the time limit to bring an action for conformity with respect to this product. In the countries of the European Union, this corresponds to a period of two (2) years from delivery of the Thrustmaster product. In other countries, the warranty period corresponds to the time limit to bring an action for conformity with respect to the Thrustmaster product according to applicable laws of the country in which the consumer was domiciled on the date of purchase of the Thrustmaster product (if no such action exists in the corresponding country, then the warranty period shall be one (1) year from the original date of purchase of the Thrustmaster product).

Notwithstanding the above, rechargeable batteries are covered by a warranty period of six (6) months from the date of original purchase.

Should the product appear to be defective during the warranty period, immediately contact Technical Support, who will indicate the procedure to follow. If the defect is confirmed, the product must be returned to its place of purchase (or any other location indicated by Technical Support).

Within the context of this warranty, the consumer's defective product shall, at Technical Support's option, be either repaired or replaced. If permitted under applicable law, the full liability of Guillemot and its subsidiaries (including for consequential damages) is limited to the repair or replacement of the Thrustmaster product. If permitted under applicable law, Guillemot disclaims all warranties of merchantability or fitness for a particular purpose. The consumer's legal rights with respect to laws applicable to the sale of consumer goods are not affected by this warranty.

This warranty shall not apply: (1) if the product has been modified, opened, altered, or has suffered damage as a result of inappropriate or abusive use, negligence, an accident, normal wear, or any other cause unrelated to a material or manufacturing defect (including, but not limited to, combining the Thrustmaster product with any unsuitable element, including in particular power supplies, rechargeable batteries, chargers, or any other elements not supplied by Guillemot for this product); (2) in the event of failure to comply with the instructions provided by Technical Support; (3) to software, said software being subject to a specific warranty; (4) to consumables (elements to be replaced over the product's lifespan: disposable batteries, audio headset or headphone ear pads, for example); (5) to accessories (cables, cases, pouches, bags, wrist-straps, for example); (6) if the product was sold at public auction.

This warranty is nontransferable.

Additional warranty provisions

In the United States of America and in Canada, this warranty is limited to the product's internal mechanism and external housing. In no event shall Guillemot or its affiliates be held liable to any third party for any consequential or incidental damages resulting from the breach of any express or implied warranties. Some States/Provinces do not allow limitation on how long an implied warranty lasts or exclusion or limitation of liability for consequential or incidental damages, so the above limitations or exclusions may not apply to you. This warranty gives you specific legal rights, and you may also have other rights which vary from State to State or Province to Province.

Liability

If permitted under applicable law, Guillemot Corporation S.A. (hereinafter "Guillemot") and its subsidiaries disclaim all liability for any damages caused by one or more of the following: (1) the product has been modified, opened or altered; (2) failure to comply with assembly instructions; (3) inappropriate or abusive use, negligence, an accident (an impact, for example); (4) normal wear. If permitted under applicable law, Guillemot and its subsidiaries disclaim all liability for any damages unrelated to a material or manufacturing defect with respect to the product (including, but not limited to, any damages caused directly or indirectly by any software, or by combining the Thrustmaster product with any unsuitable element, including in particular power supplies, rechargeable batteries, chargers, or any other elements not supplied by Guillemot for this product).

FCC STATEMENT

1. This device complies with Part 15 of the FCC Rules. Operation is subject to the following two conditions:

(1) This device may not cause harmful interference, and
 (2) This device must accept any interference received, including interference that may cause undesired operation.

2. Changes or modifications not expressly approved by the party responsible for compliance could void the user's authority to operate the equipment.

COPYRIGHT

© 2015 Guillemot Corporation S.A. All rights reserved. Thrustmaster® is a registered trademark of Guillemot Corporation S.A. "PS"®, "PlayStation", "PS3" and "ΔOXO" are registered trademarks of Sony Computer Entertainment, Inc. "PS4" is a trademark of the same company. Microsoft, Kinect, Windows, Windows Vista, the Windows Logo, Xbox, Xbox LIVE, Xbox 360, Xbox One and the Xbox logos are trademarks or registered trademarks of the Microsoft group of companies. All other trademarks and brand names are hereby acknowledged and are the property of their respective owners. Illustrations not binding. Contents, designs and specifications are subject to change without notice and may vary from one country to another. Made in China.

ENVIRONMENTAL PROTECTION RECOMMENDATION

At the end of its working life, this product should not be disposed of with standard household waste, but rather dropped off at a collection point for the disposal of Waste Electrical and Electronic Equipment (WEEE) for recycling.

This is confirmed by the symbol found on the product, user manual or packaging. Depending on their characteristics, the materials may be recycled. Through recycling and other forms of processing Waste Electrical and Electronic Equipment, you can make a significant contribution towards helping to protect the environment.

Please contact your local authorities for information on the collection point nearest you.

Retain this information. Colors and decorations may vary.

This product conforms to all standards regarding children 16 years of age and older. This product is not suitable for use by children less than 16 years of age.

www.thrustmaster.com

