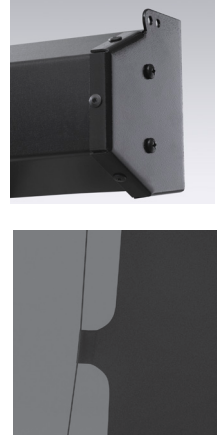
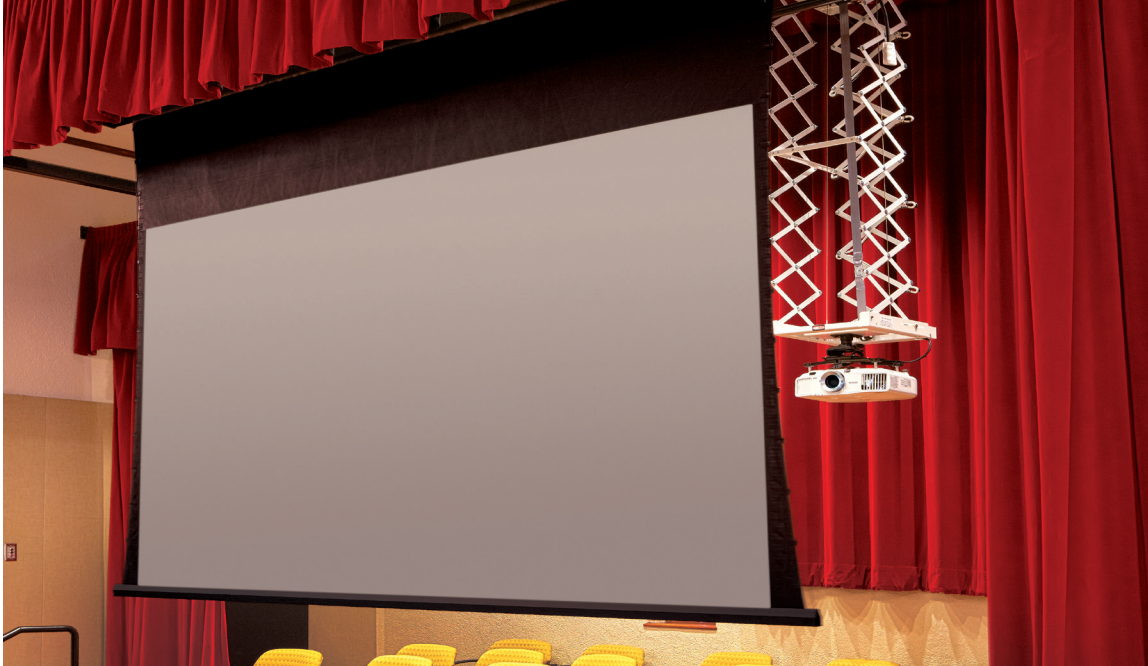


ELECTRIC Premier

TAB-TENSIONED, CEILING- OR WALL-MOUNTED



Chapel/Performing Arts Center at Walnut Village Retirement Community, Anaheim, CA
133" HDTV Premier with Cineflex viewing surface and a Scissor Lift SL8
Dealer: CCS Presentation Systems, Inc., Photography © Douglas Hill, Los Angeles, CA

- Ideal for conference rooms, classrooms, or home theaters, the economical Premier wall- or ceiling-mounted, electric projection screen offers a tab-tensioned viewing surface. Housed in an attractive black pentagonal steel case, the motor-in-roller is insulated to provide the Premier with a smooth, quiet operation.

THIS SCREEN IS TAB-TENSIONED
RF welded tabs eliminate stickiness and tab separation. Tabs warranted against separation for five years. Tab-tensioned screens provide a perfectly flat viewing surface with better image quality.

FEATURES

- Image area fully framed with black. Standard 12" black drop at top of viewing area.
- Steel case with baked-on black plastisol finish (standard), white available upon request. Includes matching endcaps with universal mounting brackets.
- Optional white aluminum ceiling trim kit available for recessed installation. Additional 12" black top drop recommended for ceiling-recessed installation.
- Optional wall- or ceiling-mounting brackets for added flexibility.
- Includes one 110-120V, 3-position switch (standard).
- WARRANTY: One year against defects in materials and workmanship.



OPTIONS

- **Control options:** Optional Plug & Play with built-in low-voltage controller (LP) or with built-in quiet, low-voltage controller (QLP). Screens over 119" (302 cm) diameter on 16:9 format on this screen cannot use QLP.
- **Viewing Surfaces:** TecVision®, OptiFlex™ (tensioned), CineFlex™ (rear projection), and ClearSound™ Perf families.

SUPPORTING DOCUMENTS

All instructions, technical drawings and other supporting documents are located at: draperinc.com/Documents.aspx

SIZES

- **Case dimensions** 5-7/8" high x 5-1/4" deep (15 cm x 13 cm). Optional built-in controls and extra drop may increase case length.
- **Maximum image width** 12' (366 cm), depending on surface selection.
- 16:10 FORMAT: 67" (170 cm) to 165" (419 cm) diagonal.
- 16:9 HDTV FORMAT: 65" (165 cm) to 161" (409 cm) diagonal.
- 4:3 NTSC/PAL FORMAT: 72" (183 cm) to 15' (547 cm) diagonal.
- AV FORMAT: from 50" x 50" (127 cm x 127 cm) to 12' x 12' (366 cm x 366 cm)
- Custom sizes available.

For more information on this product visit: draperinc.com/projectionscreens/electricscreens.aspx