

EN

ES

FR



Quick Start Guide

www.ezvizlife.com

COPYRIGHT ©2018 Hangzhou Hikvision Digital Technology Co., Ltd. or its subsidiaries. ALL RIGHTS RESERVED.

About this Manual

The Manual includes instructions for using and managing the product. Pictures, charts, images and all other information hereinafter are for description and explanation only. The information contained in the Manual is subject to change, without notice, due to firmware updates or other reasons. Please find the latest version in the **ezviz™** website (<http://www.ezvizlife.com>).

Any and all information, including, among others, wordings, pictures, graphs are the properties of Hangzhou Hikvision Digital Technology Co., Ltd. or its subsidiaries (hereinafter referred to be "Hikvision"). This user manual (hereinafter referred to be "the Manual") cannot be reproduced, changed, translated, or distributed, partially or wholly, by any means, without the prior written permission of Hikvision. Unless otherwise stipulated, Hikvision does not make any warranties, guarantees or representations, express or implied, regarding to the Manual.

Trademarks Acknowledgement

ezviz™,  **™**, and other Hikvision's trademarks and logos are the properties of Hikvision in various jurisdictions. Other trademarks and logos mentioned below are the properties of their respective owners.

Legal Disclaimer

TO THE MAXIMUM EXTENT PERMITTED BY APPLICABLE LAW, THE PRODUCT DESCRIBED, WITH ITS HARDWARE, SOFTWARE AND FIRMWARE, IS PROVIDED "AS IS", WITH ALL FAULTS AND ERRORS, AND HIKVISION MAKES NO WARRANTIES, EXPRESS OR IMPLIED, INCLUDING WITHOUT LIMITATION, MERCHANTABILITY, SATISFACTORY QUALITY, FITNESS FOR A PARTICULAR PURPOSE, AND NON-INFRINGEMENT OF THIRD PARTY. IN NO EVENT WILL HIKVISION, ITS DIRECTORS, OFFICERS, EMPLOYEES, OR AGENTS BE LIABLE TO YOU FOR ANY SPECIAL, CONSEQUENTIAL, INCIDENTAL, OR INDIRECT DAMAGES, INCLUDING, AMONG OTHERS, DAMAGES FOR LOSS OF BUSINESS PROFITS, BUSINESS INTERRUPTION, OR LOSS OF DATA OR DOCUMENTATION, IN CONNECTION WITH THE USE OF THIS PRODUCT, EVEN IF HIKVISION HAS BEEN ADVISED OF THE POSSIBILITY OF SUCH DAMAGES. TO THE MAXIMUM EXTENT PERMITTED BY APPLICABLE LAW, IN NO EVENT SHALL HIKVISION'S TOTAL LIABILITY FOR ALL DAMAGES EXCEED THE PURCHASE PRICE THE PRODUCT.

HIKVISION does not undertake any liability for personal injury or property damage, as the result of product interruption or service termination cause by: a) improper installation or usage other than as requested; b) the protection of national or public interests; c) Force Majeure; d) yourself or the third party, including not limitation, using any third party's products, software, applications, and among others.

REGARDING TO THE PRODUCT WITH INTERNET ACCESS, THE USE OF PRODUCT SHALL BE WHOLLY AT YOUR OWN RISKS. HIKVISION SHALL NOT TAKE ANY RESPONSIBILITIES FOR ABNORMAL OPERATION, PRIVACY LEAKAGE OR OTHER DAMAGES RESULTING FROM CYBER ATTACK, HACKER ATTACK, VIRUS INSPECTION, OR OTHER INTERNET SECURITY RISKS; HOWEVER, HIKVISION WILL PROVIDE TIMELY TECHNICAL SUPPORT IF REQUIRED.

The purpose of the Products is to provide an adequate warning in the event of illegal encroachment in certain area; however, the proper installation of the Products will not eliminate, but only reduce, that accidents will not occur or that there will be no personal injury or property loss as a result. You are highly recommended to raise your vigilance and strengthen the safety awareness in the daily life.

SURVEILLANCE LAWS VARY BY JURISDICTION. PLEASE CHECK ALL RELEVANT LAWS IN YOUR JURISDICTION BEFORE USING THIS PRODUCT IN ORDER TO ENSURE THAT YOUR USE CONFORMS TO THE APPLICABLE LAW. YOU FURTHER AGREE THAT THIS PRODUCT IS ONLY FOR CIVIL USE, AND HIKVISION SHALL NOT BE LIABLE IN THE EVENT THAT THIS PRODUCT IS USED WITH ILLEGITIMATE PURPOSES, SUCH AS THIRD PARTY RIGHTS INFRINGEMENT, MEDICAL TREATMENT, SAFETY EQUIPMENT OR OTHER SITUATIONS WHERE THE PRODUCT FAILURE COULD LEAD TO DEATH OR PERSONAL INJURY, OR WEAPON OF MASS DESTRUCTION, CHEMICAL AND BIOLOGICAL WEAPON, NUCLEAR EXPLOSION, AND ANY UNSAFE NUCLEAR ENERGY USES OR ANTI-HUMANITY USAGES. YOU SHOULD UNDERTAKE ALL RESPONSIBILITIES FOR LOSSES OR DAMAGES RESULTING FROM THE ABOVE USAGES WHATSOEVER.

IN THE EVENT OF ANY CONFLICTS BETWEEN THE ABOVE AND THE APPLICABLE LAW, THE LATER PREVAILS.

Regulatory Information

FCC Information

This device complies with Part 15 of the FCC Rules. Operation is subject to the following two conditions:

(1) This device may not cause harmful interference, and

(2) This device must accept any interference received, including interference that may cause undesired operation.

Note: This product has been tested and found to comply with the limits for a Class B digital device, pursuant to Part 15 of the FCC Rules. These limits are designed to provide reasonable protection against harmful interference in a residential installation. This product generates, uses, and can radiate radio frequency energy and, if not installed and used in accordance with the instructions, may cause harmful interference to radio communications. However, there is no guarantee that interference will not occur in a particular installation. If this product does cause harmful interference to radio or television reception, which can be determined by turning the equipment off and on, the user is encouraged to try to

correct the interference by one or more of the following measures:

- Reorient or relocate the receiving antenna.
- Increase the separation between the equipment and receiver.
- Connect the equipment into an outlet on a circuit different from that to which the receiver is connected.
- Consult the dealer or an experienced radio/TV technician for help.

Please take attention that changes or modification not expressly approved by the party responsible for compliance could void the user's authority to operate the equipment.

This equipment should be installed and operated with a minimum distance 20cm between the radiator and your body.

This device complies with Industry Canada licence-exempt RSS standard(s). Operation is subject to the following two conditions:

(1) this device may not cause interference, and

(2) this device must accept any interference, including interference that may cause undesired operation of the device.

Under Industry Canada regulations, this radio transmitter may only operate using an antenna of a type and maximum (or lesser) gain approved for the transmitter by Industry Canada. To reduce potential radio interference to other users, the antenna type and its gain should be so chosen that the equivalent isotropically radiated power (e.i.r.p.) is not more than that necessary for successful communication.



EU Conformity Statement

This product and - if applicable - the supplied accessories too are marked with "CE" and comply therefore with the applicable harmonized European standards listed under the Radio Equipment Directive 2014/53/EU, the EMC Directive 2014/30/EU, the RoHS Directive 2011/65/EU.



2012/19/EU (WEEE directive): Products marked with this symbol cannot be disposed of as unsorted municipal waste in the European Union. For proper recycling, return this product to your local supplier upon the purchase of equivalent new equipment, or dispose of it at designated collection points.

For more information see: www.recyclethis.info.



2006/66/EC (battery directive): This product contains a battery that cannot be disposed of as unsorted municipal waste in the European Union. See the product documentation for specific battery information. The battery is marked with this symbol, which may include lettering to indicate cadmium

(Cd), lead (Pb), or mercury (Hg). For proper recycling, return the battery to your supplier or to a designated collection point. For more information see: www.recyclethis.info.



The power supply must conform to LPS. The recommended adaptor models and manufacturers are shown on the right. Use the attached adapter, and do not change the adaptor randomly.	Model MKAC-57-242500M, MKAC-57-242200M, MKAC-57-241500M	Manufacturer MACABLE
--	---	--------------------------------

EC DECLARATION OF CONFORMITY

Hereby, Hangzhou Hikvision Digital Technology Co., Ltd. declares that the radio equipment type [CS-DB1, CS-DB1i,CS-DB1C,CS-DB1S,CS-DB2, CS-DB2i,CS-DB2C,CS-DB2S,CS-DB3, CS-DB3i,CS-DB3C,CS-DB3S] is in compliance with Directive 2014/53/EU.

The full text of the EC DECLARATION OF CONFORMITY is available at the following web link:

<http://www.ezvizlife.com/declaration-of-conformity>.

Safety Instruction

Due to the product shape and dimension, the name and address of the importer/manufacture are printed on the package.

For more information, please visit www.ezvizlife.com

Need help? Contact us:

Phone:

USA/CAN: +1-855-693-9849

MX: +52-55-8526-1060

Email:

USA/CAN/MX: service@ezvizlife.com

Other countries: support@ezvizlife.com

SAVE THIS MANUAL FOR FUTURE REFERENCE

Quick Setup

Power Kit Installation

Doorbell Installation

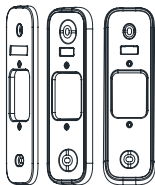
Doorbell Setup

What's in the Box



Doorbell (x1)
Faceplate (x3)

Pick the one that best matched your home from three faceplates.



Mounting Plate (x3)

Pick the one for best surveillance angle.



Screwdriver (x1)

Plate Foam (x1)

Stabilize the mounting plate when installing it in the rough surface.



Drill Bit (x1)



Power Kit (x1)



Wire Harness (x1)



Fuse Wire (x1)



Mini-Level (x1)



U-shaped Wires (x2)



Wire Connectors (x4)



Mounting Screws (x3)



Anchors (x3)



Security Screws (x2)



Fixing Screws (x2)



Doorbell Screws (x2)

Tools You May Need



Drill

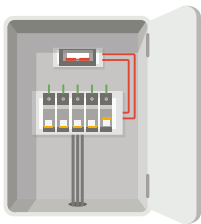


Pencil

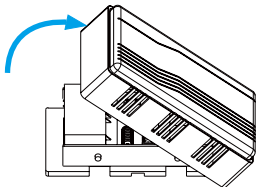
- If you have mechanical chime installed in your home, install the power kit and doorbell.
- i** • If you have electronic chime installed in your home, refer to its own manual to install the power kit, and install the doorbell.
- If no chime is installed, skip power kit installation, install the doorbell and follow the **Option B** in page 5.

Power Kit Installation

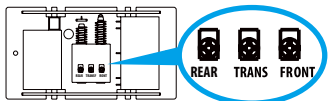
- 1 Shut off the electricity at the breaker that controls doorbell's circuit.
- 2 Insert one end of the wire harness the power kit.



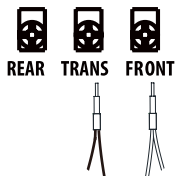
- 3 Remove the cover from your mechanical chime.



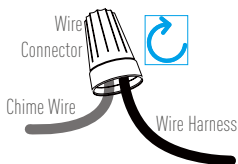
- 4 Remove the existing chime wires in the terminals named TRANS and FRONT.



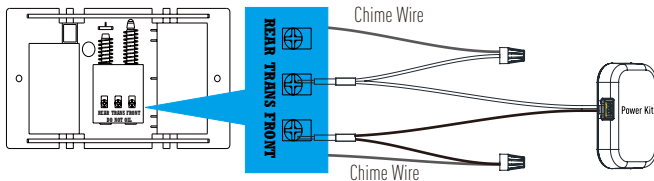
- 5 Connect the wire harness to the chime's terminals named TRANS and FRONT.



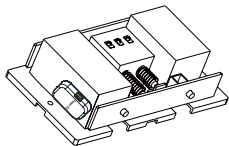
- 6 Insert the existing chime wire and the other end of the wire harness into the wire connector and twist it tightly. Repeat this step with the other chime wire.



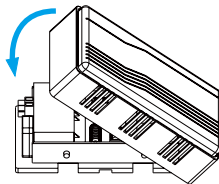
Wiring Overview



- 7 Mount the power kit to the side of the chime.



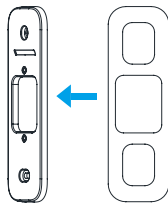
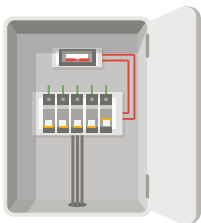
- 8 Put back the chime cover.



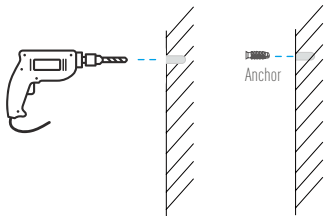
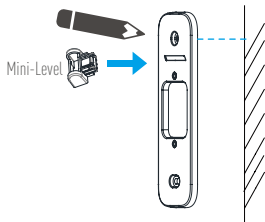
Doorbell Installation

EN

- 1 Shut off the electricity at the breaker that controls the doorbell's circuit.
- 2 Optional) When the wall is uneven, paste the plate foam to the mounting plate.

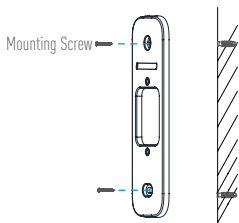


- 3 Insert the mini-level into the mounting plate and mark the drill points when its bubble stays in the middle.
- 4 Drill holes according to drill points and insert anchors.

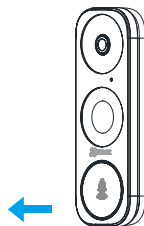


- i** Remove the mini-level when drill points are marked.

5 Fix the mounting plate to the wall.

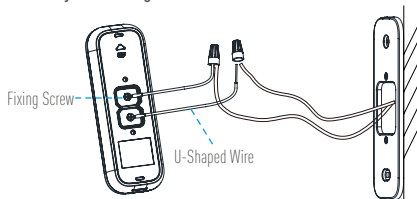


6 Remove faceplate on your doorbell from bottom to top.

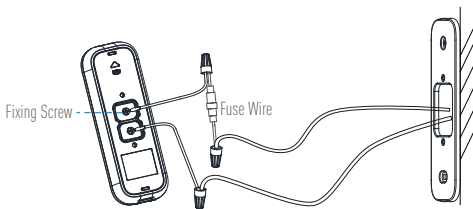


7 If you have a chime installed, follow **Option A**. If not, follow **Option B**.

Option A Connect doorbell with your existing doorbell wires.

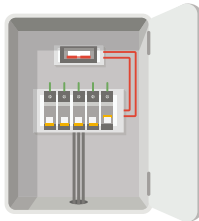
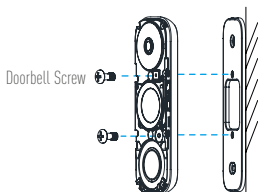


Option B Connect the fuse wire with your existing doorbell wire.



Power Supply: 8 to 24 VAC

- 8 Fix the doorbell to the mounting plate by inserting the doorbell screws.
- 9 Restore the electricity at the breaker.

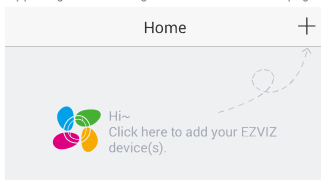


- i** Doorbell is powered on when its indicator flashes blue quickly. If not, make sure your electricity is off and check the wiring. If yes, proceed to doorbell setup.

Doorbell Setup

- 10 Add to EZVIZ app.

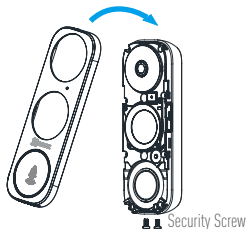
- Connect your mobile phone to Wi-Fi.
- Download and install the EZVIZ app by searching "EZVIZ" in App Store or Google Play™.
- Register an EZVIZ user account following the start-up wizard and log in.
- On the Home screen, tap "+" on the upper-right corner to go to the scan QR code page.



- Scan the QR code on the device or the cover of this manual when the indicator flashes blue.
- Follow the app wizard to finish Wi-Fi configuration.

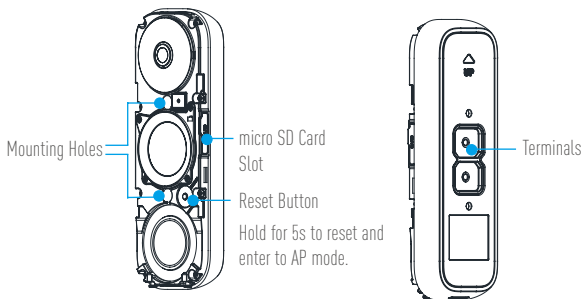
- i** If you want to change your doorbell's Wi-Fi, press and hold the reset button for 5s and repeat this part.

- 11 Put the faceplate back and insert two security screws into the bottom of the doorbell to secure the faceplate.



Appendix

Basics



LED Indicator

Blue Light

Flashing

Doorbell is ready for Wi-Fi configuration.

Steady on

Doorbell is working.

Red Light

Flashing Fast

Device Exception

Steady on

Doorbell is powering on.

Use AP Mode for Wi-Fi Configuration

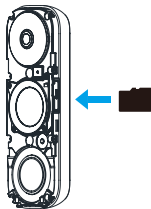
- For AP hotspot configuration, press the **Reset** button for 5 seconds and then you will hear voice prompt.
- Wait for a few seconds until you see the LED indicator flashes blue.
- Follow the voice prompt to connect Wi-Fi.

Wi-Fi Name: EZVIZ_XXXXX (9-digit Serial No.)
 Default Password: EZVIZ_XXXXXX (Verification Code)
 eg. Default Password: EZVIZ_ABCDEF


Serial No. and verification code are listed on the cover of this manual.

- Go back to EZVIZ app after successful connection. Tap **Next**.
- Search out the Wi-Fi you want the device to connect and enter password.

SD Card Management



1. In the EZVIZ app, tap the **Storage Status** in the Device Settings interface to check the SD card status.

Wi-Fi Configure	TEST-WIFI  >
Storage Status	>
Device Version	Vx.x.x build xxxxxx No new version.

2. If the card status displays as **Uninitialized**, tap to initialize it.
 The status will then change to **Normal** and it can store videos and/or pictures.