



FLIGHT SWITCH PANEL

Professional Switch Cockpit Simulation Controller

Panneau de commutateurs pro pour simulateur de cockpit

USER GUIDE | **GUIDE DE L'UTILISATEUR**

[logitechG.com](https://www.logitechG.com)



FLIGHT / VOL VUELO / SISTEMA DE MANCHE



YOKE SYSTEM
MANCHE À VOLANT
SISTEMA DE PALANCA DE MANDOS
SISTEMA DE MANCHE DE VOO



MULTI PANEL
BOÎTIER D'INSTRUMENTS
PANEL MÚLTIPLE
PAINEL MÚLTIPLO



RUDDER PEDALS
PALONNIER
TIMÓN/PEDALES
PEDAIS DO LEME



RADIO PANEL
PANNEAU RADIO
PANEL DE RADIO
PAINEL DE RÁDIO NAVEGAÇÃO



INSTRUMENT PANEL
PANNEAU D'INSTRUMENTS
PANEL DE INSTRUMENTOS
PAINEL DE INSTRUMENTOS



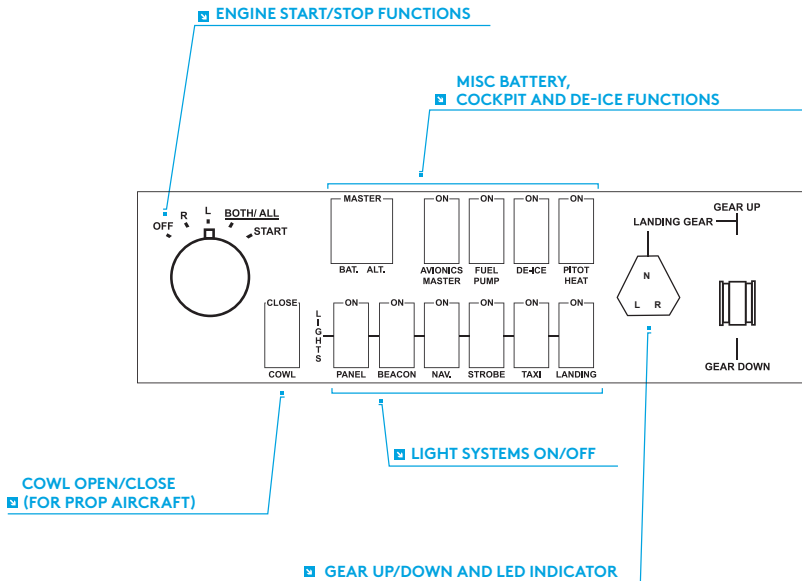
SWITCH PANEL
PANNEAU DE COMMUTATEURS
PANEL DE CONMUTADORES
PAINEL DE INTERRUPTORES



Build your whole cockpit with our modular, interchangeable system.
Recréez un cockpit complet grâce à notre système modulaire interchangeable.
Crea tu cabina completa con nuestro sistema intercambiable modular.
Construa sua cabine completa com nosso sistema modular e intercambiável.

INTRODUCTION

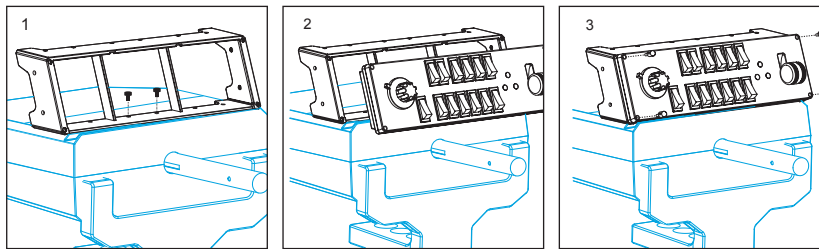
The Switch Panel features realistic switches and controls which interact in real time with Microsoft Flight Simulator X to make your flying experiences more realistic.



INSTALLATION

You can fix the Switch Panel to your desk using the velcro strips. If you already own a Logitech G Flight Yoke System, you can also mount the Switch Panel on top of the Yoke unit using the screws provided.

Important: To fix the Flight Switch Panel to the Flight Yoke System, first remove the Switch Panel from the mounting bracket, screw the bracket to the top of the Yoke System and then re-attach the Switch Panel to the front of the bracket.



Plug the Switch Panel's USB cable into one of your PC's free USB ports (or Logitech G Flight Yoke USB hub).

INSTALLATION FOR WINDOWS® 10, WINDOWS® 8.1 AND WINDOWS® 7

DRIVER INSTALLATION

- 1 Visit logitech.com/support/switch-panel to download the latest drivers and software for your operating system.
- 2 **With device disconnected**, follow the onscreen instructions to complete the installation.
- 3 At the Driver Setup screen, **only when prompted**, insert USB cable into one of your computer's USB ports, then click **Next**.

TROUBLESHOOTING

Once you have installed the appropriate plug-in for Flight Simulator X (FSX), the next time you run FSX it will prompt you that it is attempting to load the Logitech G Panel(s) Plug-in for FSX - click Yes on this screen.

After that you should see a Windows security warning asking you if you want to run LogiFlightSimX.exe - click Yes on that screen.

Finally, FSX will prompt you if you wish to make LogiFlightSimX.exe a trusted piece of software - click Yes.

Once you have installed the Panel software, the Panel buttons and controls should be automatically configured to control their functions in FSX software. If your FSX software does not recognise the Panel, unplug the USB cable and plug it back in.

For further help with other sims or any other questions, check the support page at logitech.com/support/switch-panel.

TECHNICAL SUPPORT

Online Support: support.logitech.com