

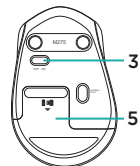
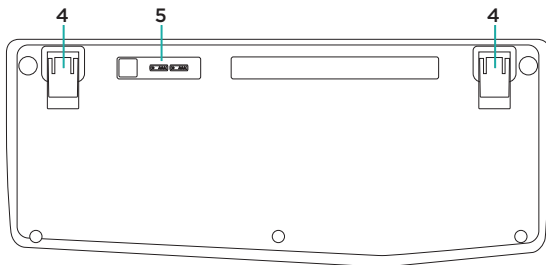
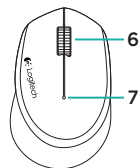
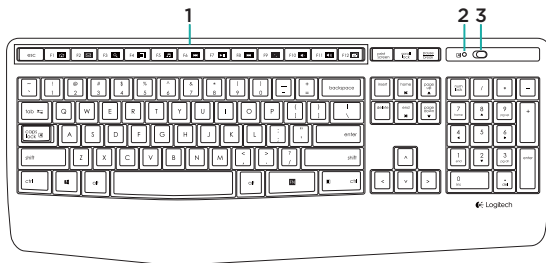


Logitech Wireless Combo MK345

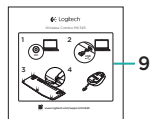


Setup Guide

Know your product

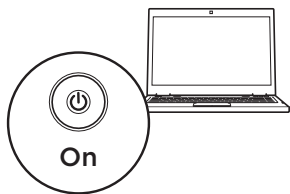


- | | |
|------------------------|--------------------------|
| 1. F-keys | 6. Scroll wheel |
| 2. Caps-lock LED | 7. Battery indicator |
| 3. On/off power switch | 8. Receiver |
| 4. Tilt-legs | 9. Product documentation |
| 5. Battery door | |

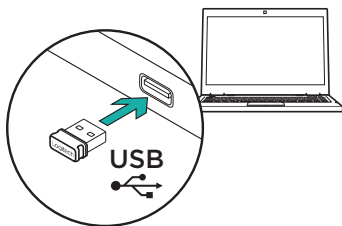


Setting up your keyboard and mouse

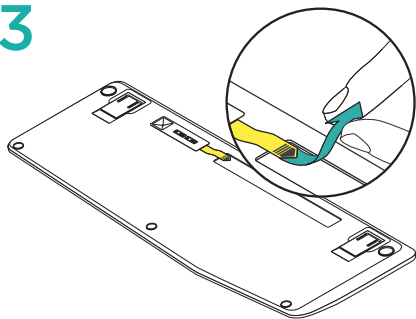
1



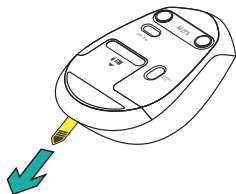
2



3

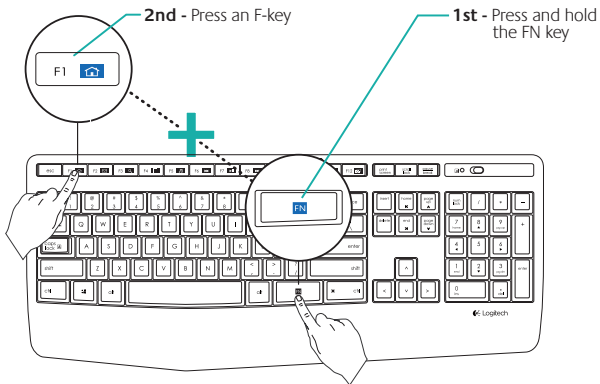


4



Keyboard F-keys

User friendly enhanced F-keys let you launch applications easily. To use the enhanced functions, first press and hold the **FN** key, then press the F-key you want to use.



FN + **F1** = Launch Web browser

FN + **F2** = Launch Email application

FN + **F3** = Search

FN + **F4** = Launch calculator

FN + **F5** = Launch media player

FN + **F6** = Previous track

FN + **F7** = Play/pause track

FN + **F8** = Next track

FN + **F9** = Mute

FN + **F10** = Volume down

FN + **F11** = Volume up

FN + **F12** = Print screen

Tip: You can use the Logitech SetPoint™ software to reprogram **F1**, **F2**, and **F4** with your preferred features

Visit Product Support

There's more information and support online for your product. Take a moment to visit Product Support to learn more about your new keyboard and mouse.

Browse online articles for setup help, usage tips, or information about additional features. If your keyboard has optional software, learn about its benefits and how it can help you customize your product.

Connect with other users in our Community Forums to get advice, ask questions, and share solutions.

At Product Support, you'll find a wide selection of content:

- Tutorials
- Troubleshooting
- Support community
- Software downloads
- Online documentation
- Warranty information
- Spare parts (when available)

Go to www.logitech.com/support/mk345

Troubleshooting

Keyboard and mouse not working

- Check your keyboard and mouse are powered on.
- Check that the receiver is securely plugged into a USB port on your computer.
- If the receiver is plugged into a USB hub, try plugging it directly into your computer.
- Try plugging the receiver into a different USB port closer to your keyboard and mouse.
- Remove any metallic objects between the receiver and your keyboard and mouse.
- Check that you pulled the battery tab out of your keyboard and mouse.
- Check the orientation of the batteries. The mouse uses one AA alkaline battery and the keyboard uses two AAA alkaline batteries.