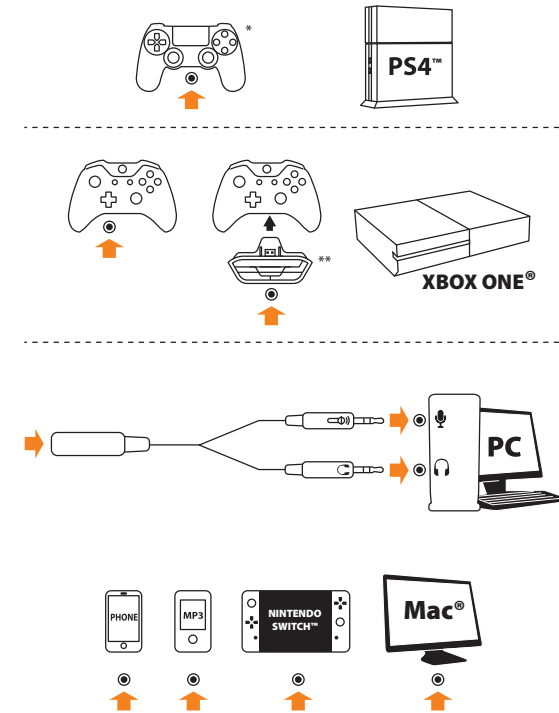
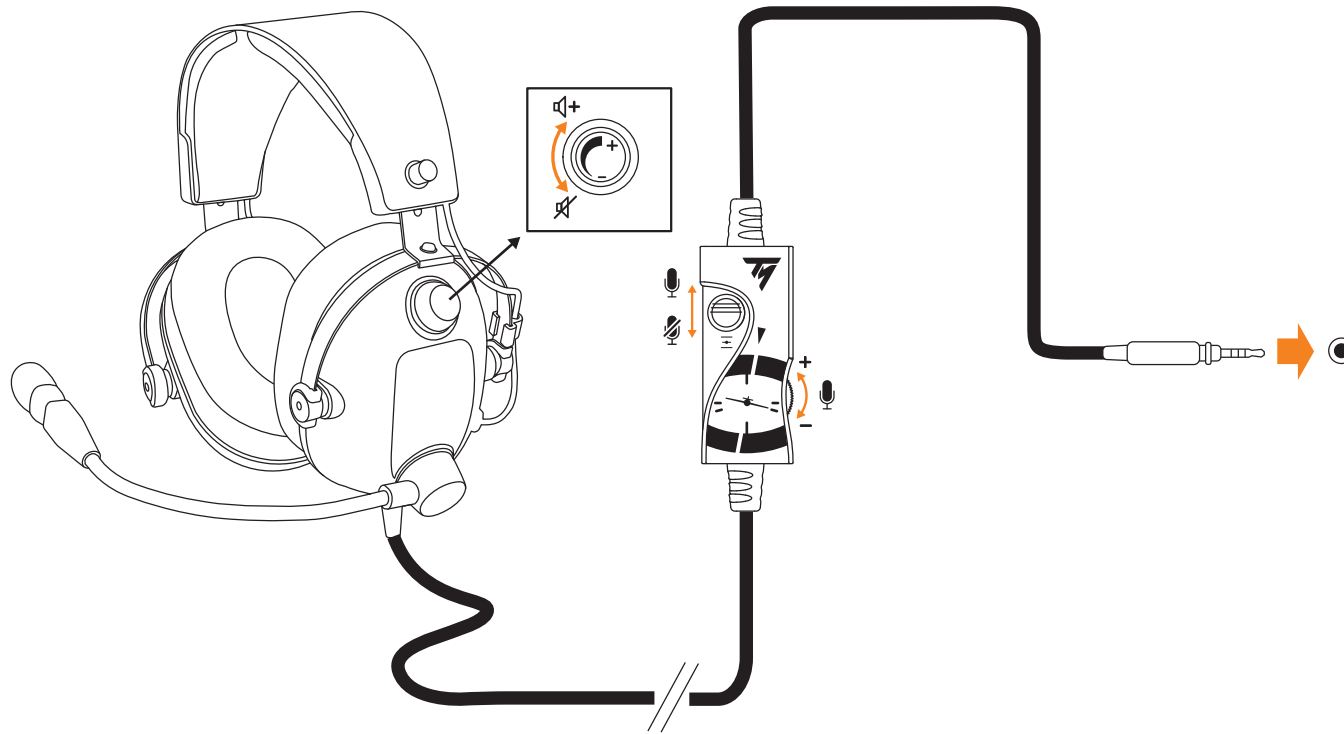


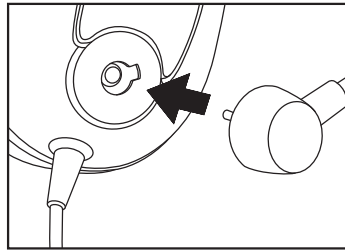
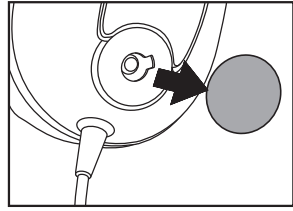
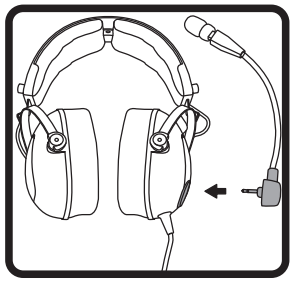
# QUICK START GUIDE

## GUIDE DE DÉMARRAGE RAPIDE

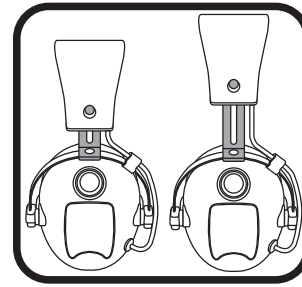


- \* EN- On the PS4™ system, select All Audio in Settings > Sound & Screen > Audio Output Settings > Output to Headphones Devices.
- \* FR- Sur le système PS4™, sélectionnez Tout audio dans Paramètres > Son et écran > Paramètres de sortie audio > Sortie vers le casque.
- \* DE- Wählen Sie auf der PS4™-Spielkonsole All-Audio in Einstellungen > Sound und Bildschirm > Audioausgabe-Einstellungen > Ausgabe über Kopfhörer.
- \* NL- Op de PS4™-gameconsole, selecteer All Audio in Apparaten > Geluid en scherm > Instellingen audio-uitvoer > Uitvoer naar hoofdtelefoon.
- \* IT- Sulla console PS4™, seleziona Tutto l'audio in Impostazioni > Audio e schermo > Impostazioni uscita audio > Riproduci l'audio tramite cuffie.
- \* ES- En la consola de juegos PS4™, selecciona Todo el audio en Ajustes > Sonido y pantalla > Ajustes de salida de audio > Salida a auriculares.
- \* PT- Na consola de jogos PS4™, seleccione Todo o áudio em Definições > Som e ecrã > Definições de saída de áudio > Enviar áudio para os auscultadores.
- \* RU- На игровой консоли PS4™ выберите «Все звуки» в меню «Настройки > Звук и экран > Настройки вывода аудио > Выход на наушники».
- \* EA- Στην κονσόλα παιχνιδιών PS4™, επιλέξτε All Audio στη διαδρομή Settings > Sound & Screen > Audio Output Settings > Output to Headphones Devices.
- \* TÜ- Oyun PS4™ konsolunda, Ayarlar > Ses ve Ekran > Ses Çıkış Ayarları > Kulaklığa Çıkış Ver'de "Tüm seslerin"i seçin.
- \* PL- Na konsoli do gier PS4™ wybierz „Cały dźwięk” w sekcji Ustawienia > Dźwięk i ekran > Ustawienia wyjścia audio > Wyjście na słuchawki.
- \* BR- No PS4™, seleccione Todos os áudios em Configurações > Som e tela > Configurações de saída de áudio > Saída para fones de ouvido.
- \* JA- PS4™ システムの Settings > Sound & Screen > Audio Output Settings > Output to Headphones Devices で All Audio を選択します。

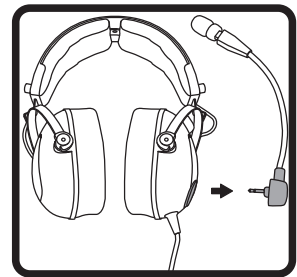
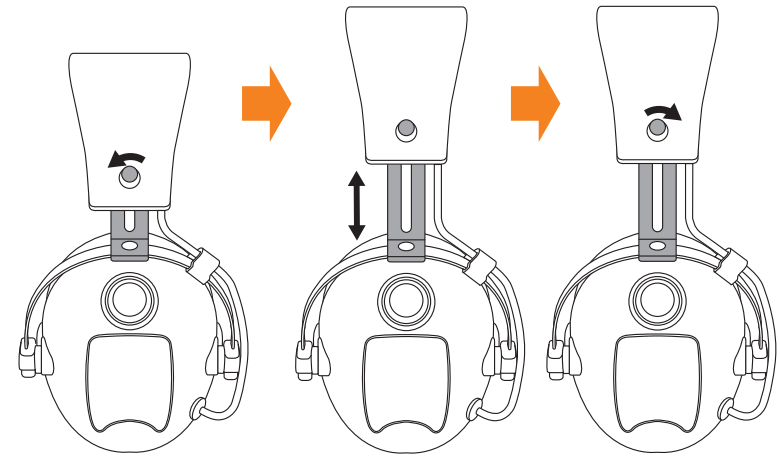
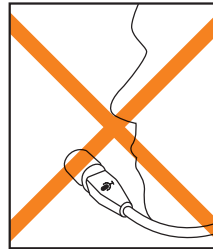
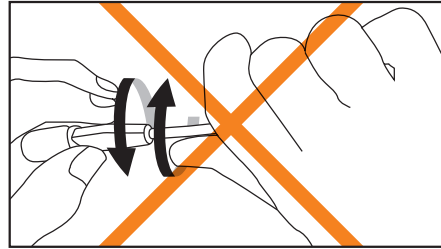
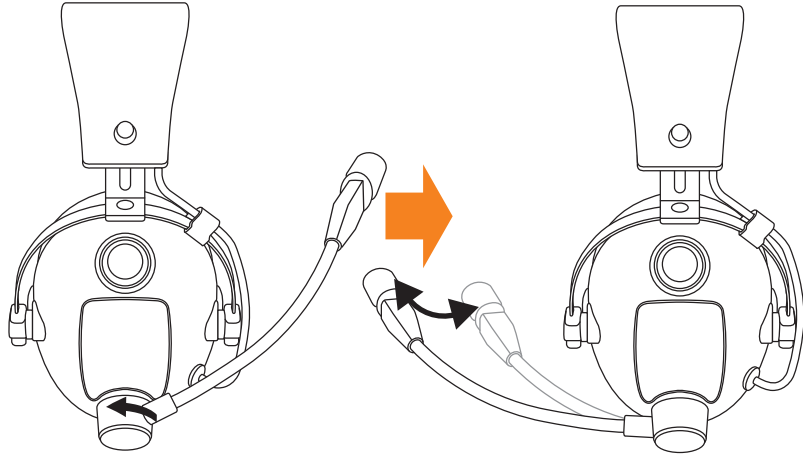
- \* 繁體中文-在 PS4™ 系統上, 在「設定」>「聲音與顯示器」>「聲音輸出設定」>「輸出到耳機裝置」中, 選擇「全部聲音」。
- \* 한국어- PS4™ 시스템에서, 설정>사운드와 화면>오디오 출력 설정>헤드폰 기기로 출력으로 이동해 모든 오디오를 선택해 주십시오.
- \*\* Xbox One Stereo Headset Adapter/Adaptateur de casque stéréo Xbox One / Xbox One Adapter für Stereo-Headsets / Xbox One-stereoheadsetadapter / Adattatore per cuffia stereo Xbox One / Adaptador para auriculares estéreo Xbox One / Adaptador de Auricular Estéreo Xbox One / Адаптер стереогарнитуры для Xbox One / Προσαρμογέας στερεοφωνικών ακουστικών Xbox One / Xbox One Stereo Kulaklık Adaptörü / Adapter do zestawów słuchawkowych / Adaptador de Headset Estéreo Xbox One / Xbox One 스테레오 헤드셋용 아댑터 / Xbox One 立體聲耳機配接器 / Xbox One 스테레오 헤드셋 어댑터



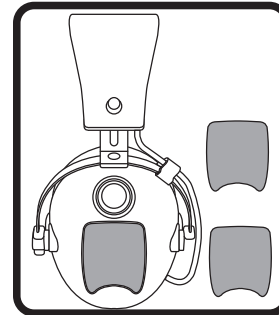
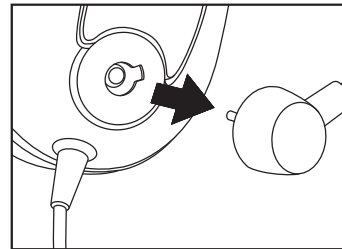
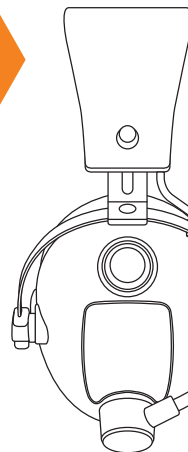
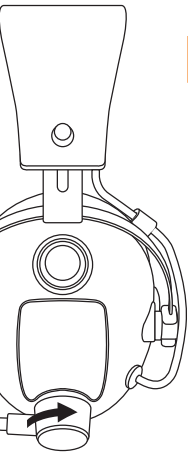
**A**



**B**



**C**



**D**

