



Oben[®]

TVH-108

Travel Video Head



You're on steady ground[®]

Thank you for choosing Oben

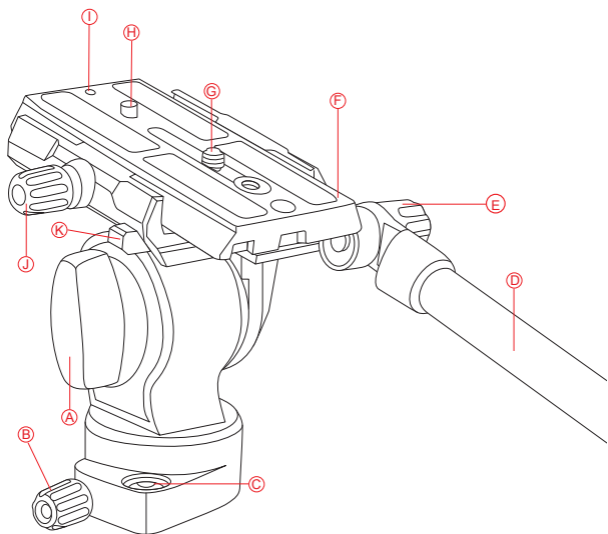
The Oben TVH-108 Travel Video Head provides smooth panning and tilting for cameras and lenses weighing up to 8.8 pounds. Perfect for shooting on the go with a point and shoot camera, camcorder, or a small DSLR, the head features independent adjustment for full 360° panning and +90° to -90° tilt. The fluid-type drag system ensures smooth and even camera movement. An integrated bubble level makes accurate camera alignment with the horizon fast and easy. A snap-in quick release plate is included for speedy mounting and dismounting of the camera.

Please read through this entire manual before using the TVH-108 Video Head.

Note: Images are for illustrative purposes only. Actual product may vary.

| | |
|--|------------|
| Key Features | 4-5 |
| Mounting the Video Head to a Tripod | 6 |
| Converting the Mounting Thread | 6 |
| Mounting the Quick-Release Plate | 7 |
| Mounting the Camera | 8 |
| Leveling the Camera | 8 |
| Tilt Control | 9 |
| Pan Control | 9 |
| Specifications | 10 |
| Warnings | 11 |

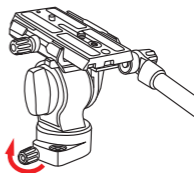
KEY FEATURES



- Ⓐ Tilt knob
- Ⓑ Pan knob
- Ⓒ Bubble level
- Ⓓ Adjustable arm
- Ⓔ Arm adjust knob
- Ⓕ Quick-release plate
- Ⓖ 1/4-20 mounting screw
- Ⓗ Guide pin
- Ⓘ Quick-release plate safety screw
- Ⓝ Quick-release knob
- Ⓚ Safety lock

Mounting the Video Head to a Tripod

Tighten the pan knob, and then rotate the head clockwise onto the tripod's mounting stud. Tighten the head until secure.



CONVERTING THE MOUNTING THREAD

For tripods with a 1/4-20 mounting stud, screw the included 3/8-16 to 1/4-20 reducer bushing into the head's mounting socket.

Mounting the Quick-Release Plate

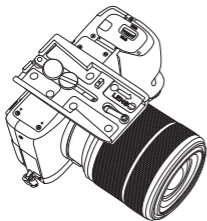
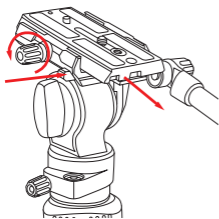
The plate uses a 1/4-20 screw that fits most cameras.

1. Loosen the quick-release knob. Press the safety lock and slide the quick-release plate off the head.

2. Screw the quick-release plate into the 1/4-20 threaded socket on the base of your camera. Use a slotted screwdriver or coin to tighten the screw.

If your camera has a guide socket, make sure the quick-release guide pin is aligned with your camera before you tighten the mounting screw.

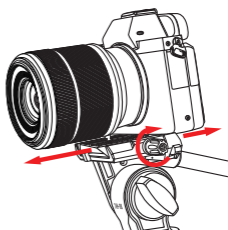
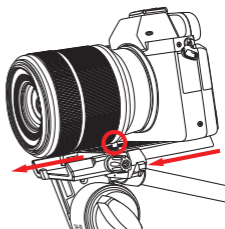
Warning: Some manufacturers' quick-release plates do not meet our specifications and may not lock your equipment securely in the Oben TVH-108. Make sure to test any non-Oben camera and lens plates to ensure compatibility.



Mounting the Camera

1. Tighten all knobs except the quick-release knob.
2. Slide the guide-pin side of the quick-release plate past the safety lock on the clamp.
3. Adjust the position of the quick-release plate to ensure the best balance for your camera, and tighten the quick-release knob until the plate is secure.

Important: When changing camera positions via the quick-release knob, always keep one hand on the camera.



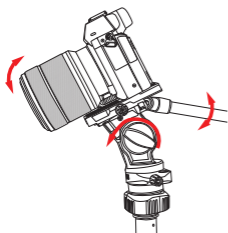
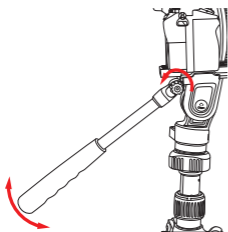
Leveling the Camera

The head has an integrated bubble level to ensure that your camera is aligned with the horizon.

Tilt Control

1. Loosen the arm adjust knob to set the arm at the desired angle. Tighten the arm adjust knob until secure.
2. Loosen the tilt lock by turning it counterclockwise to tilt your camera while you're shooting.

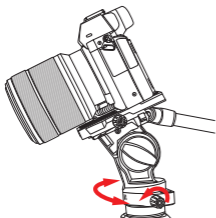
When the tilt knob is loosened, a spring-loaded counter balance will allow smoother tilting.



Pan Control

Tighten the pan knob by turning it clockwise to set the position of the camera.

Loosen the pan knob to pan or change position of the camera. The built-in fluid-type drag ensures smooth and even camera movement.



Specifications

| | |
|-------------------------|------------------|
| Head Type | Video |
| Base Mount | 3/8-16 thread |
| Quick-Release Type | 501 type |
| Load Capacity | 8.8 lb. (4 kg) |
| Number of Bubble Levels | 1 |
| Friction Control | No |
| Tilt Angle | +90° to -90° |
| Independent Pan Lock | Yes |
| Base Diameter | 1.7 in. (4.3 cm) |
| Height | 4 in. (10.2 cm) |
| Weight | 1 lb. (454 g) |

**Warnings:**

- *Do not exceed the tripod's maximum load capacity.*
- *Ensure that all appropriate locks are engaged when necessary.*
- *The video head should be used only in temperatures ranging between -22°F and 140°F.*
- *Do not operate in salt water. Dry the video head if it becomes wet.*
- *Remove the camera from the head during setup or transport.*
- *Keep out of reach of children.*

Visit our website at **ObenSupports.com**
for more Oben products.



www.obensupports.com

Oben is a registered trademark of the Gradus Group.
© 2019 Gradus Group LLC. All Rights Reserved.