

G403 HERO

Gaming Mouse
Souris gaming

[SETUP GUIDE](#) | [GUIDE D'INSTALLATION](#)

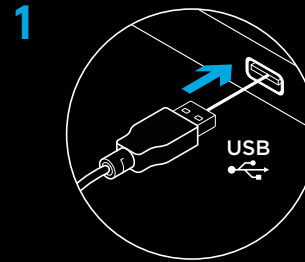


logitech ™

SETUP INSTRUCTIONS

Please read the instructions before operating the product.

1 Plug mouse into USB port.



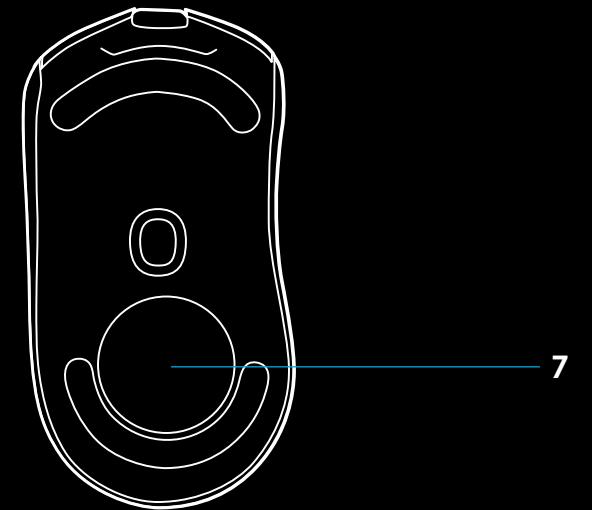
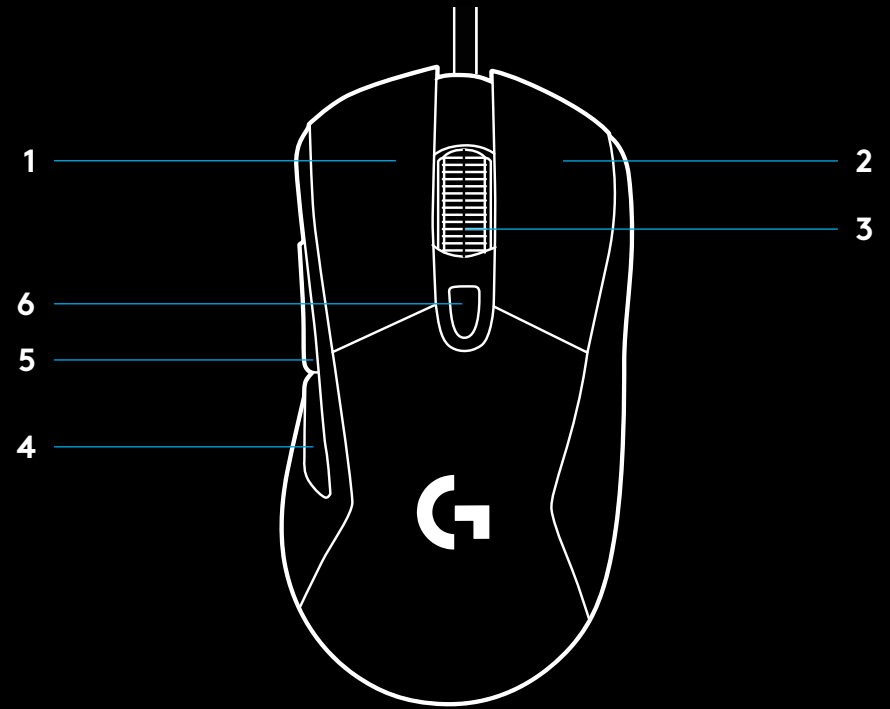
2 Download and install Logitech G HUB software from www.logitechG.com/GHUB.



www.logitechG.com/GHUB

6 FULLY PROGRAMMABLE BUTTONS

- 1 Left (Button 1)
- 2 Right (Button 2)
- 3 Wheel click (Button 3)
- 4 Back (Button 4)
- 5 Forward (Button 5)
- 6 DPI Cycle
- 7 Weight door



RGB PROGRAMMABLE LIGHTING

G403 HERO wheel and logo are illuminated with RGB LEDs.

These colors can be customized using Logitech G HUB gaming software to a variety of breathing, color cycling, or solid color modes.

Lighting patterns can also be synchronized with other supported Logitech G devices using this software.

LIGHTSYNC RGB

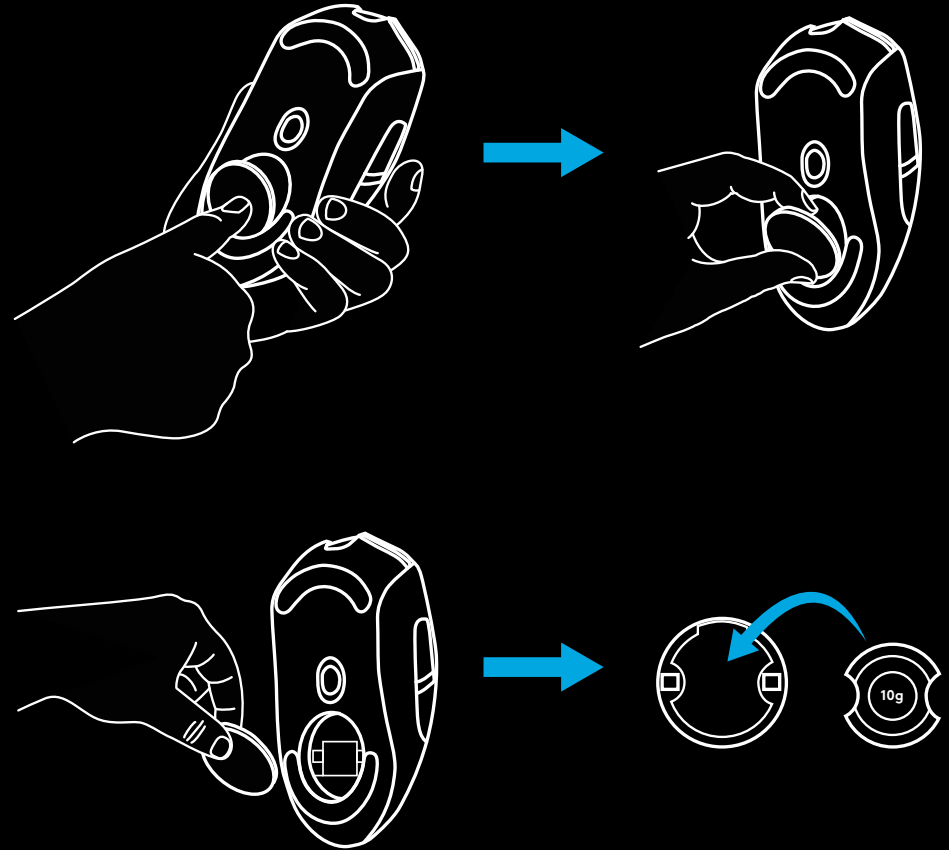
LIGHTSYNC RGB is game-driven, intelligent lighting that reacts to in-game action, audio, screen color and more.

Customize with Logitech G HUB gaming software to match your set up and style.



WEIGHT CUSTOMIZATION

An optional 10g weight can be found in the packaging.



FREQUENTLY ASKED QUESTIONS

www.logitechG.com/support/G403-HERO