




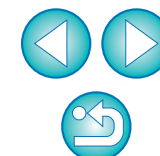
Image Viewing, Organizing and Editing Software

# ImageBrowser

Ver. 6.1

## Instruction Manual

- In this manual, IB is used for ImageBrowser.
- In this manual, the windows used in the examples are from Mac OS X 10.4.
- Click on the icons below on the bottom right of the screen to switch between pages.
  -  : Go to next page    : Go to previous page
  -  : Return to a page you had previously displayed
- Click on the chapter headings on the right side of the screen to switch to the contents page of each chapter.

[Introduction](#)[Table of Contents](#)[Basic Operation](#)[Advanced Operation](#)[High-Level Functions](#)[Preferences](#)[Reference](#)[Contents Lookup](#)[Index](#)

# READ CAREFULLY BEFORE USING!

## CANON SOFTWARE LICENSE AGREEMENT

IMPORTANT - READ THIS AGREEMENT BEFORE USING THE SOFTWARE ON THE CD-ROM IN THIS BOX. BY USING THE SOFTWARE, YOU AGREE TO BE BOUND BY THE TERMS OF THIS AGREEMENT.

This is a license agreement (the [Agreement]) between you and Canon Inc. ([Canon]).

IF YOU DO NOT AGREE TO THE TERMS AND CONDITIONS OF THIS AGREEMENT, DO NOT USE THE SOFTWARE PROGRAM ON THE CD-ROM AND THE USER MANUAL IN THIS BOX (COLLECTIVELY, THE [SOFTWARE]) AND RETURN THE SOFTWARE WITHIN 30 DAYS FROM THE DATE OF PURCHASE TO YOUR POINT OF PURCHASE FOR A REFUND.

In consideration of the right to use the SOFTWARE, you agree to abide by the terms and conditions of this Agreement.

1. LICENSE: Canon grants you the non-exclusive right to use the SOFTWARE only on a single computer. You may physically transfer the SOFTWARE from one computer to another provided that the SOFTWARE is used on only one computer at a time. You shall not install or use the SOFTWARE on a network, multiple CPU, multiple site arrangement, or any other hardware configuration where the SOFTWARE is accessible to more than one CPU or to more than one user.

YOU SHALL NOT ASSIGN, SUBLICENSE, RENT, LEASE, LOAN, CONVEY OR OTHERWISE USE, TRANSFER, COPY, TRANSLATE, CONVERT TO ANOTHER PROGRAMMING LANGUAGE, ALTER, MODIFY, DECOMPILE OR DISASSEMBLE THE SOFTWARE, IN WHOLE OR IN PART, EXCEPT AS EXPRESSLY PROVIDED IN THIS AGREEMENT.

2. BACK-UP COPY: You may make one copy of the SOFTWARE solely for back-up purposes, or copy the SOFTWARE onto the permanent storage device (e.g. a hard disk) of your computer and retain the original for back-up purposes. Any other copying of the SOFTWARE is a violation of this Agreement. You must reproduce and include the copyright notice on the back-up copy.

3. SUPPORT AND UPDATES: Canon is not responsible for providing maintenance or support for use of the SOFTWARE. No updates, fixes or support will be made available for the SOFTWARE.

4. LIMITED WARRANTY AND LIMITATION OF LIABILITY: It is your responsibility to choose, maintain and match the hardware and software components of your computer system. Thus Canon does not guarantee uninterrupted service or correction of errors or that the functions or performance of the SOFTWARE will meet your requirements. THE SOFTWARE IS LICENSED ON AN [AS IS] BASIS AND WITHOUT WARRANTY OF ANY KIND. The CD-ROM storing the SOFTWARE is warranted only against defective material under normal use for a period of ninety (90) days after purchase from an authorized Canon dealer as evidenced by your sales receipt. Your sole remedy for a defective CD-ROM shall be replacement of the same without charge when returned by you at your expense to your point of purchase and proven to be defective upon inspection. The replacement CD-ROM will be warranted for the remainder of the original ninety (90) day warranty period of the defective CD-ROM. The limited warranty does not apply if the failure of the CD-ROM resulted from accident, abuse or misapplication of the SOFTWARE and shall not extend to anyone other than the original user of the SOFTWARE.

EXCEPT AS SPECIFICALLY SET FORTH IN THIS PARAGRAPH 4, CANON, CANON'S SUBSIDIARIES, DISTRIBUTORS AND DEALERS DISCLAIM ALL WARRANTIES, EXPRESS OR IMPLIED, INCLUDING ANY WARRANTY OF MERCHANTABILITY OR FITNESS FOR A PARTICULAR PURPOSE, WITH RESPECT TO THE SOFTWARE.

NEITHER CANON NOR ANY OF CANON'S SUBSIDIARIES, DISTRIBUTORS OR DEALERS IS LIABLE FOR ANY DAMAGES HOWSOEVER CAUSED, INCLUDING WITHOUT LIMITATION, DIRECT, CONSEQUENTIAL OR INCIDENTAL LOSS OR DAMAGE INCLUDING LOSS OF PROFITS, EXPENSE OR INCONVENIENCE HOWSOEVER CAUSED OR ARISING OUT OF THE SOFTWARE OR THE USE THEREOF.

NEITHER CANON, NOR ANY OF CANON'S SUBSIDIARIES, DISTRIBUTORS OR DEALERS SHALL HAVE ANY OBLIGATION TO INDEMNIFY YOU AGAINST ANY CLAIM OR SUIT BROUGHT BY A THIRD PARTY ALLEGING THAT THE SOFTWARE OR THE USE THEREOF INFRINGES ANY INTELLECTUAL PROPERTY OF SUCH THIRD PARTY.

5. TERM: This Agreement is effective upon your using the SOFTWARE and remains in effect until expiration of all copyright interests in the SOFTWARE unless earlier terminated. You may terminate this Agreement by destroying the SOFTWARE. This Agreement will also terminate without notice to you if you fail to comply with any of the terms of this Agreement and you must then promptly return the SOFTWARE. In addition, Canon may enforce its other legal rights.

6. U.S. GOVERNMENT RESTRICTED RIGHTS NOTICE: The SOFTWARE is provided with restricted rights. Use, duplication or disclosure is subject to restrictions as set forth in either subparagraph (c) (1) (ii) of the Rights in Technical Data and Computer software clause at DFARs 252.227-7013 or subparagraph (c) (1) and (2) of the Commercial Computer Software Restricted Rights Clause at FAR 52.227-19, as applicable.

7. SEVERABILITY: In the event that any provision of this Agreement is declared or found to be illegal by any court or tribunal of competent jurisdiction, such provision shall be null and void with respect to the jurisdiction of that court or tribunal and all the remaining provisions of this Agreement shall remain in full force and effect.

8. CONTROLLING LAW: The terms of this Agreement as it relates to purchases of the Software in the United States of America shall be governed and construed in all respects in accordance with the laws and regulations of the State of New York, without reference to choice of law principles. The terms of this Agreement as it relates to purchases of the Software in Canada shall be governed by the laws of the province of Ontario.

9. OWNERSHIP: All rights, including but not limited to copyrights and trade secret rights, to the SOFTWARE belong to Canon, its affiliated corporations and third party licensors. Your use of the SOFTWARE is subject to the United States, Canada and other applicable copyright and trademark laws and nothing in this Agreement constitutes a waiver of the rights of Canon, its affiliated corporations and third party licensors under such laws. Nothing contained in Paragraph 1 shall be construed to give Canon any ownership rights in any images, graphics or textual material that you save in connection with the Software.

10. ACKNOWLEDGEMENT: BY USING THE SOFTWARE, YOU ACKNOWLEDGE THAT YOU HAVE READ THIS AGREEMENT, UNDERSTOOD IT, AND AGREE TO BE BOUND BY ITS TERMS AND CONDITIONS. YOU ALSO AGREE THAT THIS AGREEMENT IS THE COMPLETE AND EXCLUSIVE STATEMENT OF AGREEMENT BETWEEN YOU AND CANON CONCERNING THE SUBJECT MATTER HEREOF AND SUPERSEDES ALL PROPOSALS OR PRIOR AGREEMENTS, VERBAL OR WRITTEN, AND ANY OTHER COMMUNICATIONS BETWEEN THE PARTIES RELATING TO THE SUBJECT MATTER HEREOF. NO AMENDMENT TO THIS AGREEMENT SHALL BE EFFECTIVE UNLESS SIGNED BY A DULY AUTHORIZED OFFICER OF CANON.

Introduction

Table of Contents

Basic Operation

Advanced Operation

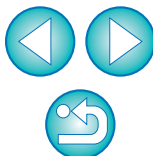
High-Level Functions

Preferences

Reference

Contents Lookup

Index



## Main Features of IB

- Download images to your computer
- Check images
- Print images
- Organize images
- Edit images
  - Adjust images
  - Trim images
  - Insert text
  - Correct red-eye
  - Change image size and type
- Utilize images
  - Attach an image to an e-mail
  - Create wallpaper or a screen saver
- Convert images
  - Change image size and type

## Symbols Used

- ▶ : Selection procedure for menus that appear on the computer screen
- [ ] : Names of items and menus, buttons, windows, etc. that appear on the computer screen
- < > : Camera switch name or icon, or a keyboard key name
- p.\*\* : Reference page (jump to page by clicking)
- ? : Help
- 💡 : Tip
- ⚠ : Important information
- 📄 : Helpful information

## Makeup of Each Chapter

### Chapter 1 Basic Operation

- Starting up and quitting IB
- Downloading images to your computer
- Checking images
- Printing images

### Chapter 2 Advanced Operation

- Efficient checking of images
- Organizing images
- Editing images
- Utilizing images
- Index printing
- Layout printing

### Chapter 3 High-Level Functions

- Checking images with high-level functions
- Organizing images with high-level functions
- Advanced image editing
- Editing RAW images

### Chapter 4 Preferences

- Settings for all functions

### Reference

- Solving problems
- Uninstalling IB
- System requirements
- Supported images
- Lists of primary window functions

Table of Contents

Basic Operation

Advanced Operation

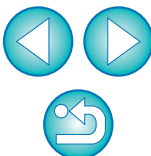
High-Level Functions

Preferences

Reference

Contents Lookup

Index



# Table of Contents

## Chapter 1 Basic Operation..... 6

Starting up IB .....	7
Downloading an Image to Your Computer.....	7
Downloading Images Using Your Card Reader.....	8
Viewing an Image .....	9
View Images as Thumbnails in the Main Window .....	10
Changing the Display Magnification .....	11
Enlarging and Viewing Images One at a Time .....	11
Displaying an Image Across the Whole Window (Full View Display).....	12
Printing an Image.....	13
Quitting IB .....	14

## Chapter 2 Advanced Operation ..... 15

Checking/Sorting Images.....	16
Enlarging and Checking Images One at a Time .....	16
Enlarging a Specific Part of an Image .....	17
Sorting Images.....	17
Extracting Images You Want to Display (Filter Display) .	18
Arranging Images in the Main Window.....	18
Efficiently Checking/Sorting Images .....	19

Organizing Images .....	20
Creating a Folder for Saving Images.....	20
Moving Images .....	21
Moving Images in Folders .....	21
Changing File and Folder Names for Images.....	22
Deleting an Image or Folder .....	23
Registering Frequently-Used Folders as Favorite Folders.....	23
Deleting Favorite Folders .....	24
Editing an Image.....	25
Automatic Adjustment Using IB .....	25
Adjusting Color and Brightness .....	26
Trimming an Image.....	27
Inserting Text into Images .....	28
Adjusting Sharpness.....	29
Correcting Red-Eye Automatically.....	30
Correcting Red-Eye Manually .....	30
Utilizing Your Images.....	31
Viewing Images as a Slide Show .....	31
Sending an Image by E-Mail .....	33
Creating Wallpaper from an Image.....	34
Creating a Screen Saver from an Image .....	35
Printing Multiple Images on One Sheet of Paper (Index Printing) .....	37
Arranging Images Freely and Printing (Layout Printing). 38	

Introduction

Table of  
Contents

Basic  
Operation

Advanced  
Operation

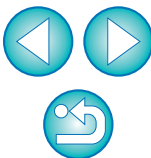
High-Level  
Functions

Preferences

Reference

Contents  
Lookup

Index



## Chapter 3 High-Level Functions..... 39

Comparing Multiple Images .....	40
Viewing Shooting Information for an Image.....	41
Changing the Size and Type of an Image and Saving ...	41
Exporting Shooting Information .....	42
Organizing Images Using High-Level Functions.....	43
Setting Keywords in Images .....	43
Entering Comments into Images .....	43
Saving Multiple Images with New File Names.....	44
Classifying Images by Shot Date.....	44
Searching for Images.....	46
Performing Advanced Editing .....	47
Adjusting the Color of an Image in RGB.....	47
Adjusting the Brightness Level .....	48
Adjusting the Tone Curve .....	48
Transferring Images to Other Image Editing Software.....	49
Merging Images to Create Panorama Images.....	50

Adjusting RAW Images.....	51
Applying Picture Style Files .....	53
White Balance Files and Tone Curve Files .....	54
Saving White Balance Files.....	54
Saving Tone Curve Files (Excludes the EOS-1Ds Mark III and EOS-1D Mark III).....	55
Adding Sound to Images/Playing Back .....	55
Adding Sound to Images .....	55
Playing Back Sound .....	55

## Chapter 4 Preferences..... 56

Preferences .....	57
Browser Window Settings.....	57
Viewer Window Settings.....	58
Confirmation Dialog Box Settings.....	58
Processing When Rotating Settings .....	59
Layout Print Settings .....	59
Photo Print Settings.....	59
Register Application Settings.....	59

Introduction

Table of  
Contents

Basic  
Operation

Advanced  
Operation

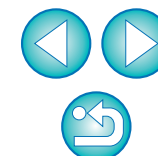
High-Level  
Functions

4  
Preferences

Reference

Contents  
Lookup

Index



<b>Reference .....</b>	<b>60</b>
Troubleshooting .....	61
Deleting the Software (Uninstalling) .....	62
System Requirements .....	63
Supported Images .....	63
List of Main Window Functions .....	64
Preview Mode .....	64
List Mode .....	65
List of Viewer Window Functions .....	66
List of Photo Print Window Functions .....	67
List of Index Print Window Functions .....	68
List of Layout Print Window Functions .....	69
List of RAW Image Task Main Window Functions .....	70
Contents Lookup .....	71
Index .....	72
About This Instruction Manual .....	74
Trademark Acknowledgments .....	74

Introduction

Table of Contents

Basic Operation

Advanced Operation

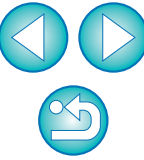
High-Level Functions

Preferences

Reference

Contents Lookup

Index



# 1 Basic Operation



Starting up IB.....	7
Downloading an Image to Your Computer .....	7
Downloading Images Using Your Card Reader.....	8
Viewing an Image .....	9
View Images as Thumbnails in the Main Window .....	10
Changing the Display Magnification .....	11
Enlarging and Viewing Images One at a Time .....	11
Displaying an Image Across the Whole Window (Full View Display).....	12
Printing an Image .....	13
Quitting IB.....	14

Introduction

Table of  
Contents

**1**  
Basic  
Operation

**2**  
Advanced  
Operation

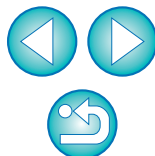
**3**  
High-Level  
Functions

**4**  
Preferences

Reference

Contents  
Lookup

Index



# Starting up IB

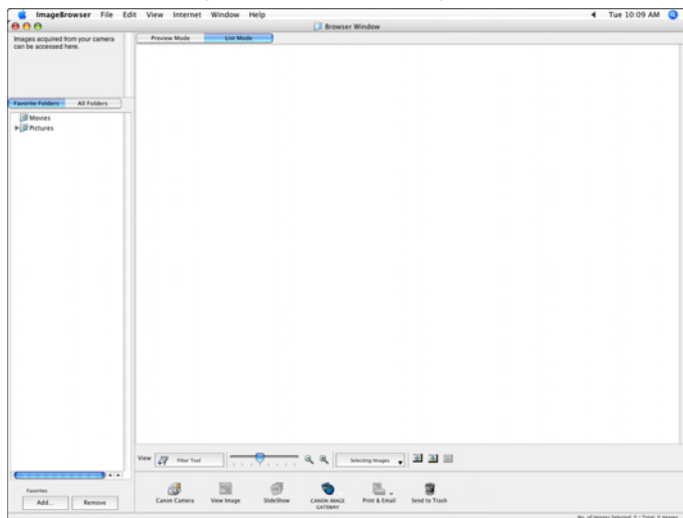
Click the icon on the Dock.




→ IB starts up and the main window (browser window) appears.



## Main window (browser window)



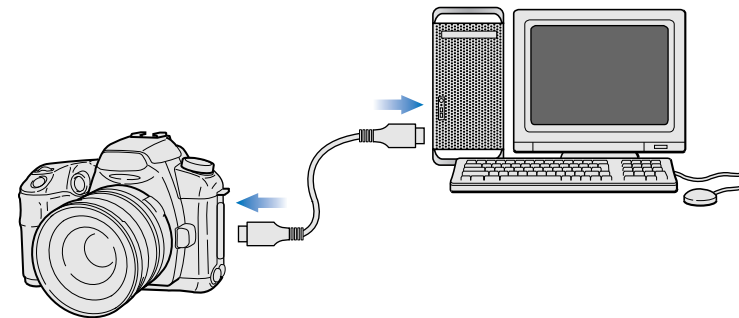
 The [CANON IMAGE GATEWAY] button may not be displayed depending on the area you are in.

# Downloading an Image to Your Computer

Connect the camera and computer with the cable provided and download the images saved on the memory card inside the camera. For downloading images, start up the camera software “EOS Utility” and use.

## 1 Connect your camera and computer and turn the camera on.

- When IB starts up, connect the camera and your computer with the interface cable provided with the camera and turn the camera on.
- For detailed instructions on connecting your camera and computer, refer to the “EOS Utility Instruction Manual” (PDF electronic manual).



→ EOS Utility starts up automatically.

## EOS Utility



Introduction

Table of Contents

Basic Operation

Advanced Operation

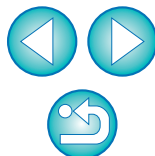
High-Level Functions

Preferences

Reference

Contents Lookup

Index



## 2 Download images.



- Downloading of images begins.
- The downloaded images are saved in the [Pictures] folder and are displayed in the main window of IB.
- The downloaded images are sorted into folders by date and saved.
- Click the EOS Utility [Quit] button to quit EOS Utility and turn the camera's power switch to < OFF >.

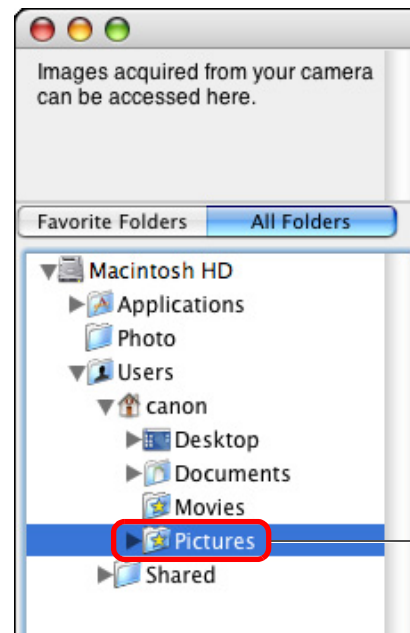
### Advantages of using EOS Utility to download images

Using EOS Utility to download images makes it easier to organize your images as they are downloaded, sorted and saved into folders by date.

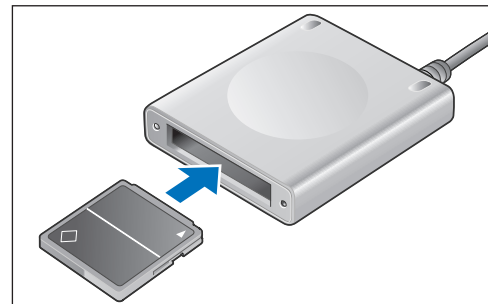
## Downloading Images Using Your Card Reader

You can also download images to the computer using a third-party card reader.

- 1 Start up IB and then select the save destination for the images in the folder area at the left of the main window.



- 2 Load the memory card into the card reader.



- Download images window appears.

Introduction

Table of Contents

Basic Operation

Advanced Operation

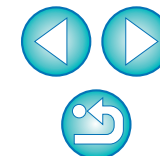
High-Level Functions

Preferences

Reference

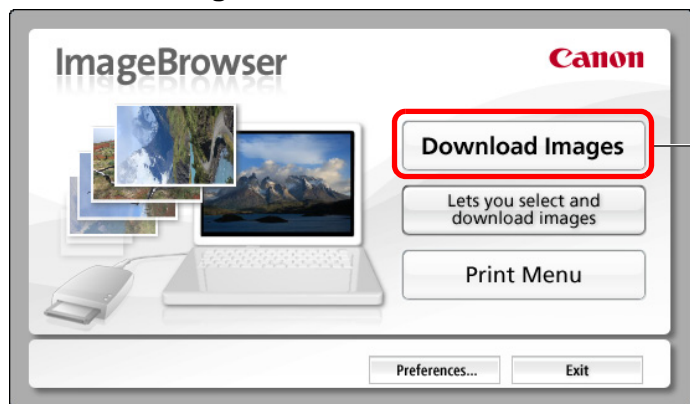
Contents Lookup

Index



## 3 Download images.

### Download images window



- Downloading of images begins.
- The downloaded images are saved in the folder selected in step 1 and are displayed in the main window of IB.
- The downloaded images are sorted into folders by date and saved.
- Click the [Exit] button to quit Download images window.



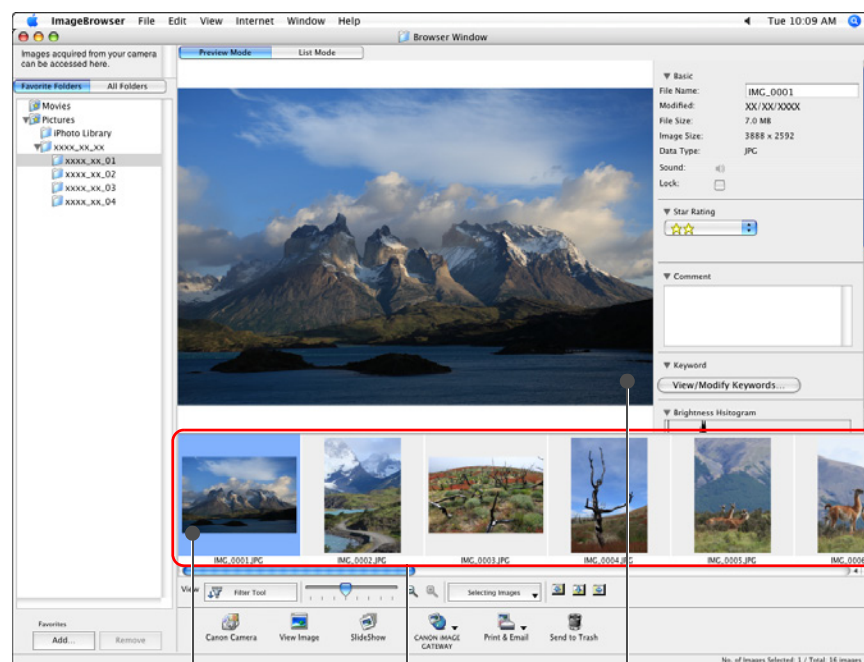
### Advantages of using IB to download images

Using IB to download images makes it easier to organize your images as they are downloaded, sorted and saved into folders by date.

## Viewing an Image

Images downloaded to your computer are displayed in the main window.

### Main window



Click to select the image

The clicked image is enlarged and displayed in the center of the window

Displays the images in the folder that was selected from the folder area on the left of the window

- To select multiple images, click on the images while holding down the < ⌘ > key or < shift > key on the keyboard.
- You can select all images in a folder by clicking the [Selecting Images] button and then selecting [Select All] from the menu that appears.



For a list of main window functions, refer to [p.64](#).

Introduction

Table of Contents

Basic Operation

Advanced Operation

High-Level Functions

Preferences

Reference

Contents Lookup

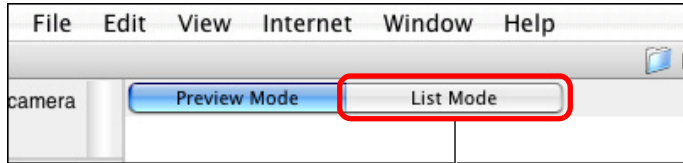
Index



## View Images as Thumbnails in the Main Window

You can change the display mode of the main window to show only a list of the thumbnail images.

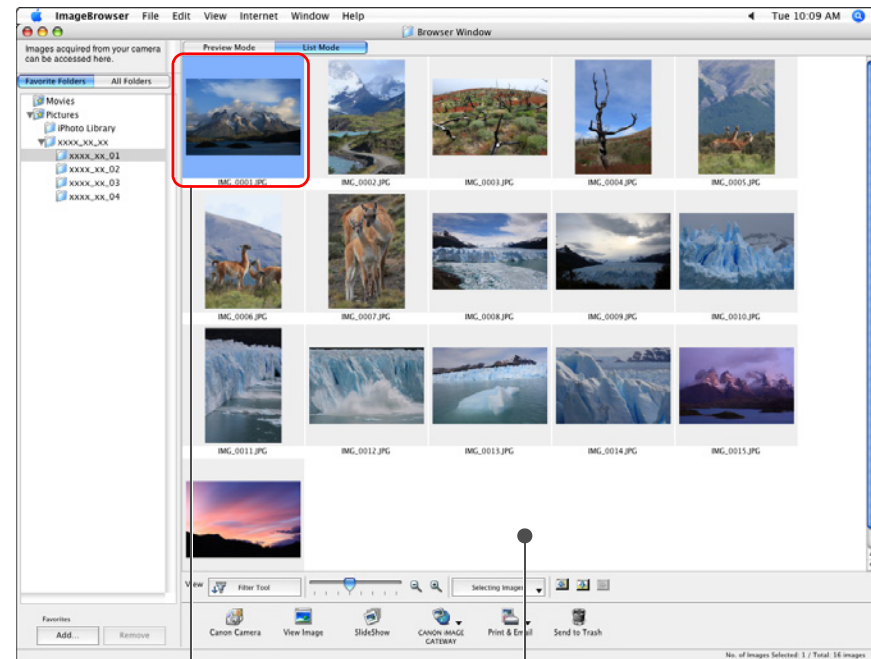
Click the [List Mode] tab sheet.



Click

→ The main window display changes to List Mode.

## Main window (List Mode)



Click to select the image

Displays the images in the folder that was selected from the folder area on the left of the window

- To select multiple images, click on the images while holding down the < ⌘ > key or < shift > key on the keyboard.
- You can select all images in a folder by clicking the [Selecting Images] button and then selecting [Select All] from the menu that appears.

Introduction

Table of Contents

Basic Operation

Advanced Operation

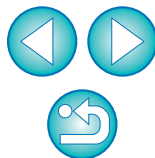
High-Level Functions

Preferences

Reference

Contents Lookup

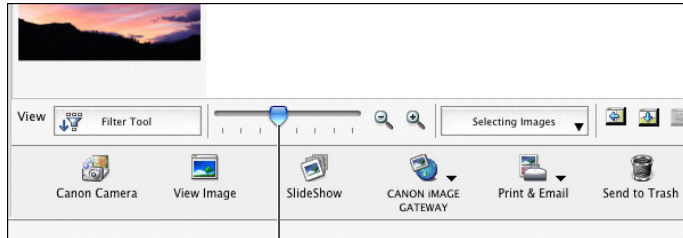
Index





## Changing the Display Magnification

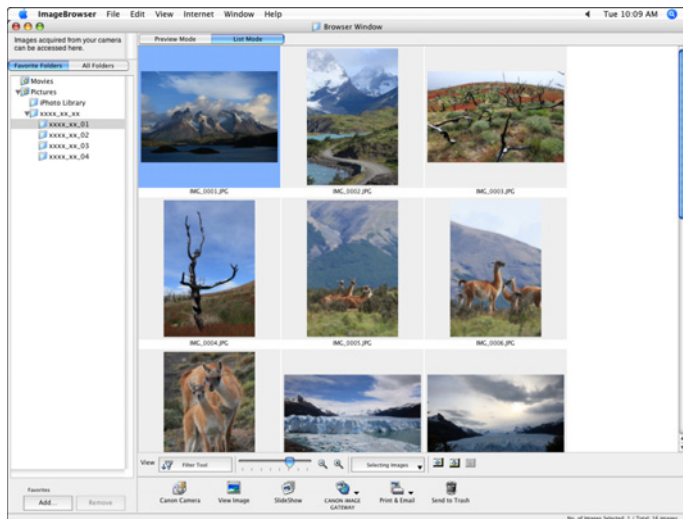
You can change the display magnification of the thumbnail images displayed in Preview Mode (p.64) and List Mode (p.65).

### Change the display magnification.



Drag left or right

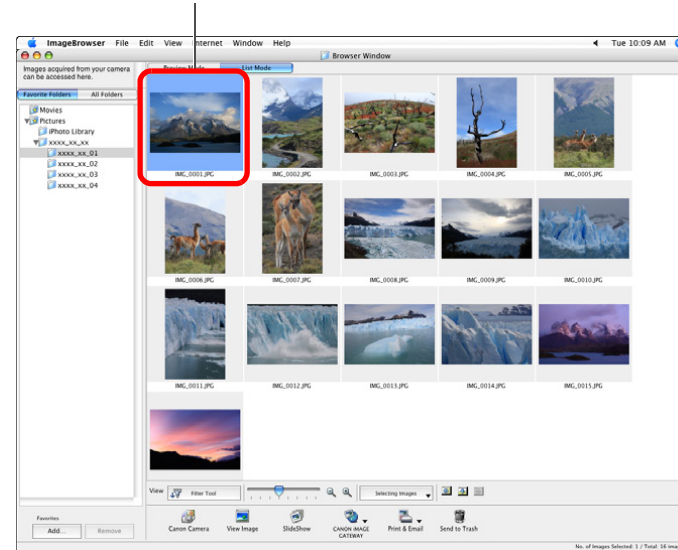
- You can also change the display magnification by clicking [  ] or [  ].
- The display magnification of the images changes.



## Enlarging and Viewing Images One at a Time

### 1 Double-click an image to enlarge.

Double-click



→ The viewer window appears.

Introduction

Table of Contents

Basic Operation

Advanced Operation

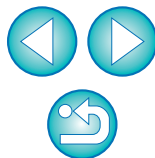
High-Level Functions

Preferences

Reference

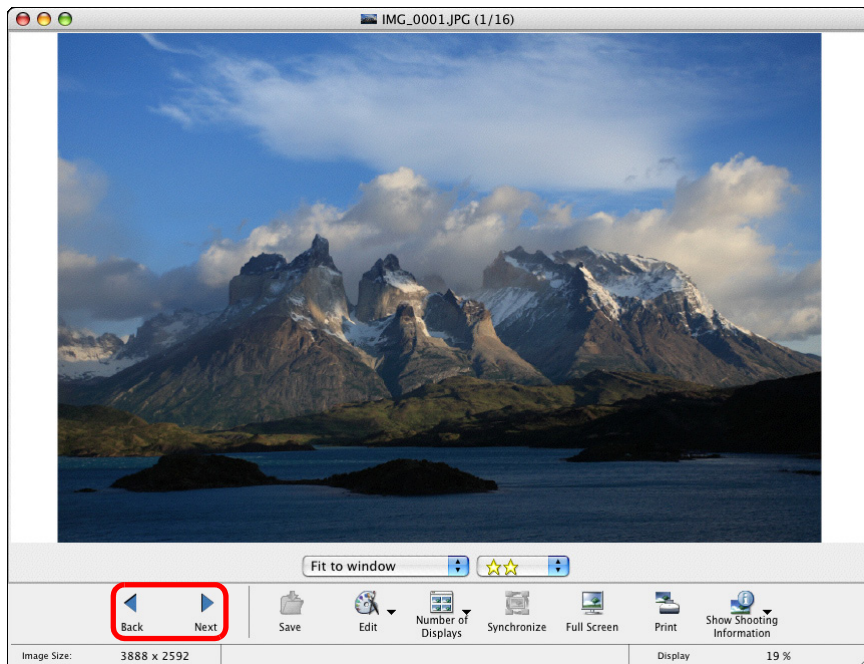
Contents Lookup

Index



2 Click [◀] or [▶] to switch to the image you want to display.

Viewer window



- The shooting information is displayed if you click [ Show Shooting Information ] (Show Shooting Information) and select [ Show Shooting Information ] from the menu that appears.
- To quit the viewer window, click [ Close ] on the top left of the window.

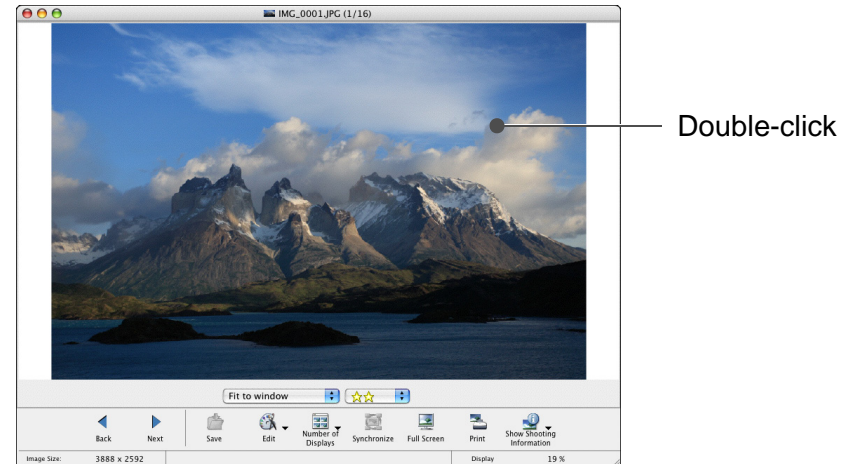
### ? When you display RAW images in the viewer window

The [Show Original Image] button appears at the bottom of the window. Click this button to display the processed image.

For a list of viewer window functions, refer to [p.66](#).

## Displaying an Image Across the Whole Window (Full View Display)

Double-click on the image you want to display across the whole window.



- You can also display the image across the whole window by clicking [ Full Screen ] (Full Screen) on the bottom of the window.
- The image is enlarged and displayed across the whole window.



- To return to the viewer window, click on the window or press the < esc > key on the keyboard.

Introduction

Table of Contents

Basic Operation

Advanced Operation

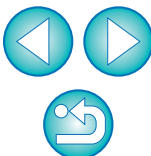
High-Level Functions

Preferences

Reference

Contents Lookup

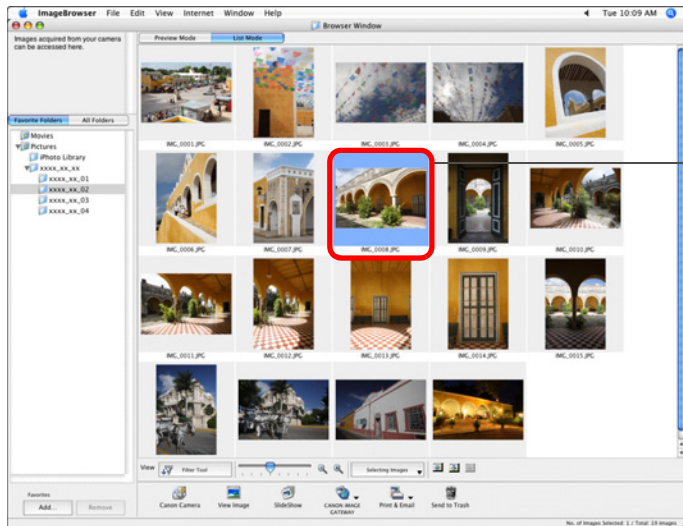
Index



# Printing an Image

This section explains how to print one image on one sheet of paper.

## 1 Select the image to be printed.

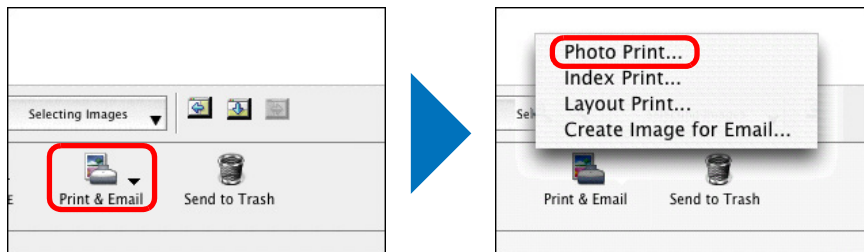


Click

- To select multiple images, click on the images while holding down the < ⌘ > key or < shift > key on the keyboard.
- You can select all images in a folder by clicking the [Selecting Images] button and then selecting [Select All] from the menu that appears.

## 2 Display the print settings window.

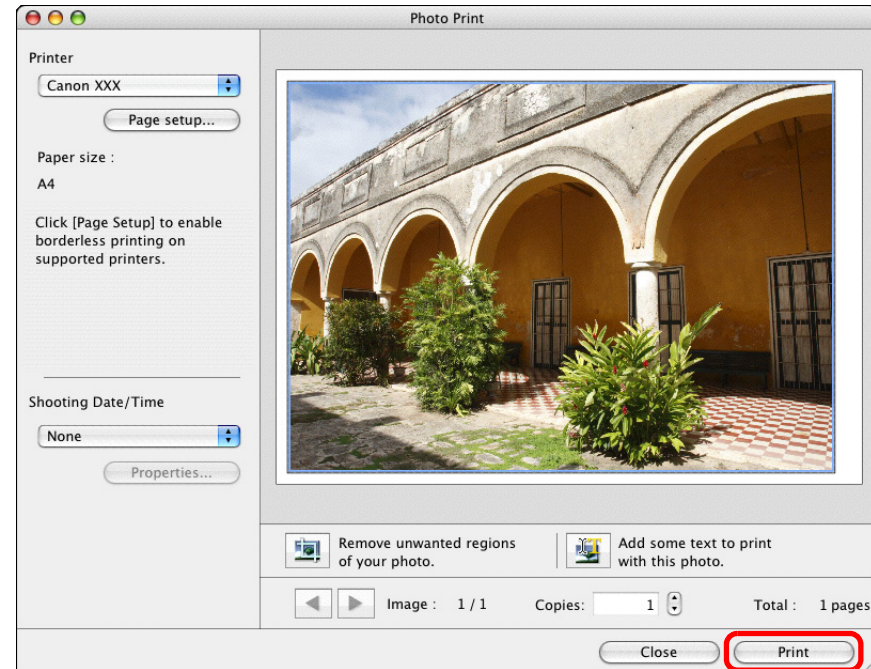
- Click the [Print & Email] button and then select [Photo Print] from the menu that appears.



→ The [Photo Print] window appears.

## 3 Set the paper size and other settings, and then click the [Print] button.

### Photo Print window



→ Printing begins.

Introduction

Table of Contents

Basic Operation

Advanced Operation

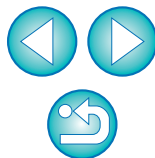
High-Level Functions

Preferences

Reference

Contents Lookup

Index



# Quitting IB

In the main window, select the [ImageBrowser] menu  
▶ [Quit ImageBrowser].



→ IB quits.

Introduction

Table of Contents

Basic Operation

Advanced Operation

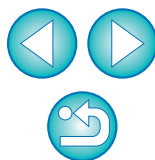
High-Level Functions

Preferences

Reference

Contents Lookup

Index



# 2 Advanced Operation

Checking/Sorting Images .....	16
Enlarging and Checking Images One at a Time .....	16
Enlarging a Specific Part of an Image .....	17
Sorting Images.....	17
Extracting Images You Want to Display (Filter Display) .....	18
Arranging Images in the Main Window .....	18
Efficiently Checking/Sorting Images.....	19
Organizing Images .....	20
Creating a Folder for Saving Images.....	20
Moving Images .....	21
Moving Images in Folders.....	21
Changing File and Folder Names for Images .....	22
Deleting an Image or Folder .....	23
Registering Frequently-Used Folders as Favorite Folders .....	23
Deleting Favorite Folders.....	24
Editing an Image .....	25
Automatic Adjustment Using IB .....	25
Adjusting Color and Brightness .....	26
Trimming an Image.....	27
Inserting Text into Images .....	28
Adjusting Sharpness.....	29
Correcting Red-Eye Automatically.....	30
Correcting Red-Eye Manually .....	30

Utilizing Your Images.....	31
Viewing Images as a Slide Show .....	31
Sending an Image by E-Mail .....	33
Creating Wallpaper from an Image.....	34
Creating a Screen Saver from an Image .....	35
Printing Multiple Images on One Sheet of Paper (Index Printing) .....	37
Arranging Images Freely and Printing (Layout Printing) .....	38

Introduction

Table of Contents

Basic Operation

**Advanced Operation**

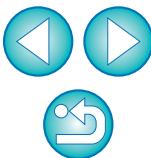
High-Level Functions

4 Preferences

Reference

Contents Lookup

Index



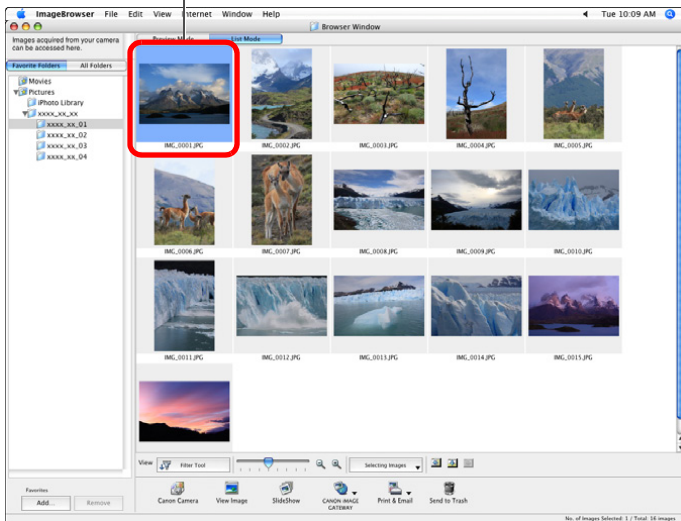
# Checking/Sorting Images

You can enlarge images one at a time from a list in the main window and check what they look like in detail, and sort them into one of three groups with [ ☆ ] (ratings).

## Enlarging and Checking Images One at a Time

1 Double-click on the image on the top left of the main window.

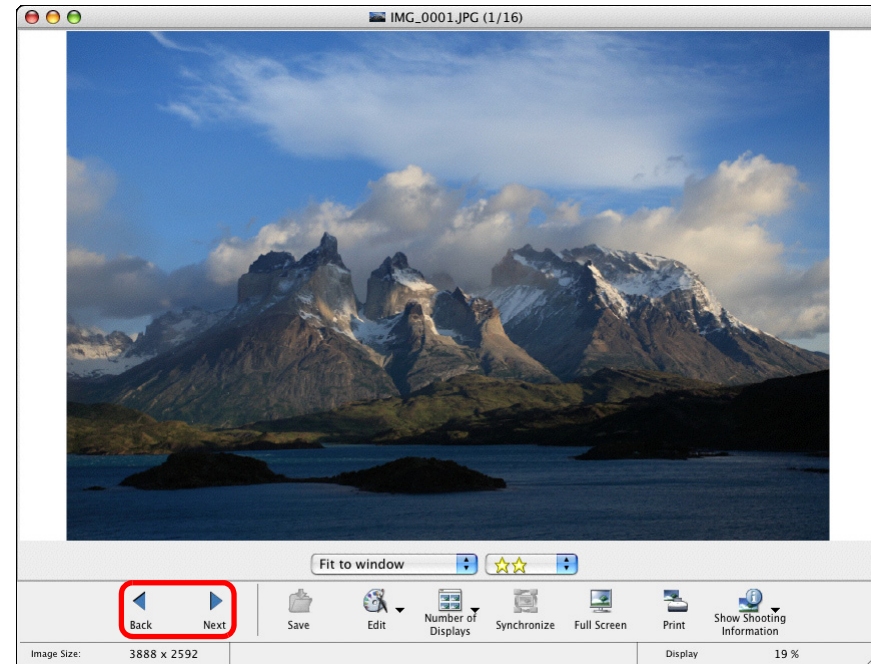
Double-click



→ The viewer window appears.

2 Click [ ◀ ] or [ ▶ ] to switch to the image you want to display.

Viewer window



- The shooting information is displayed if you click [ ⓘ ] (Show Shooting Information) and select [Show Shooting Information] from the menu that appears.
- To quit the viewer window, click [ ⓧ ] on the top left of the window.

💡 To display only selected images in the viewer window

Select multiple images in the main window (p.10) and then click on [ ⓘ ] (View Image) (p.65) on the bottom of the main window to display only the selected images in the viewer window.

📄 For a list of viewer window functions, refer to p.66.

Introduction

Table of Contents

Basic Operation

Advanced Operation

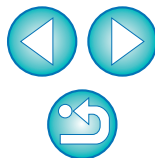
High-Level Functions

Preferences

Reference

Contents Lookup

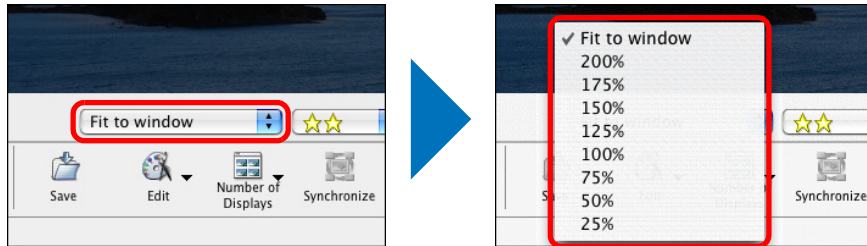
Index



## Enlarging a Specific Part of an Image

### 1 Enlarge an image.

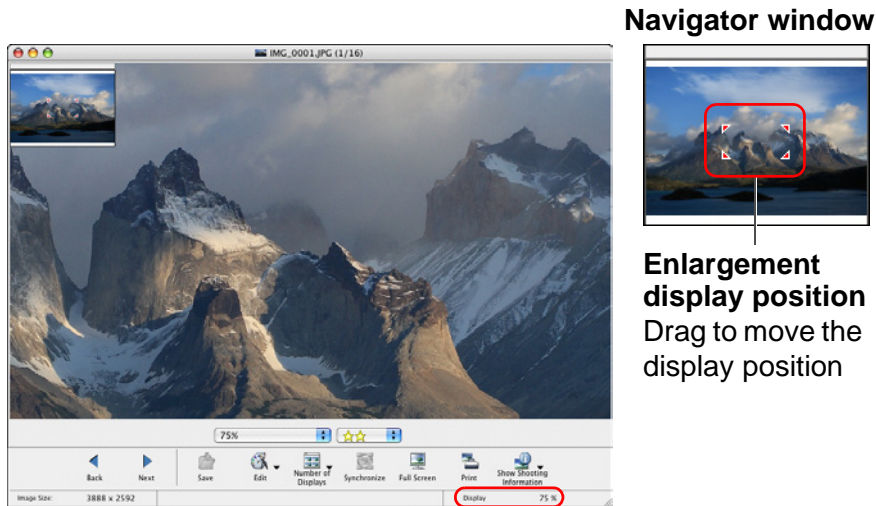
- Click the list box and then select the display magnification.



→ The image enlarges and the navigator window appears.

### 2 Display the part of the image you want to check.

- Drag the enlargement display position in the navigator window and display the part of the image you want to check.



Display magnification

- To return to full view, select [Fit to window] from the list box.

### ? Enlarging RAW images

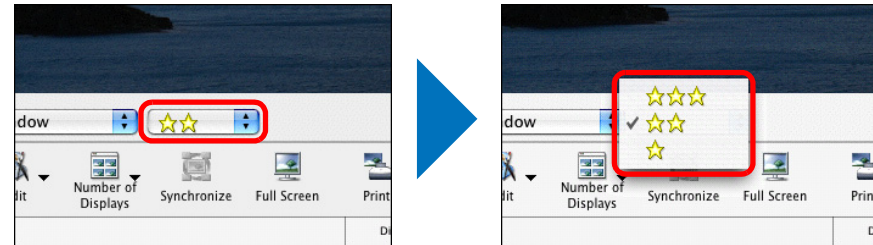
RAW images cannot be enlarged before they are processed. By clicking the [Show Original Image] button on the bottom of the window, the image is processed and it can be enlarged.

## Sorting Images

You can sort images into one of three groups by attaching [ ☆ ] (ratings) according to photo subject or theme. Please note that [ ☆ ☆ ] is automatically attached to images shot with your camera.

### Increase or decrease a rating.

- Click the list box and then select the number of [ ☆ ].



Introduction

Table of Contents

Basic Operation

Advanced Operation

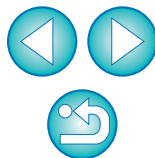
High-Level Functions

Preferences

Reference

Contents Lookup

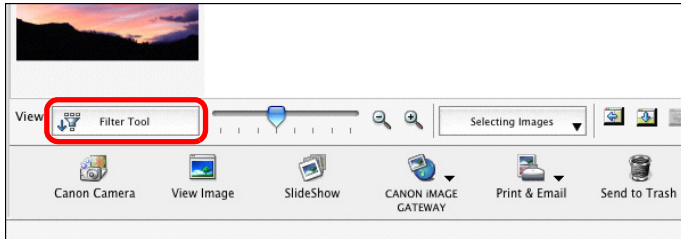
Index



# Extracting Images You Want to Display (Filter Display)

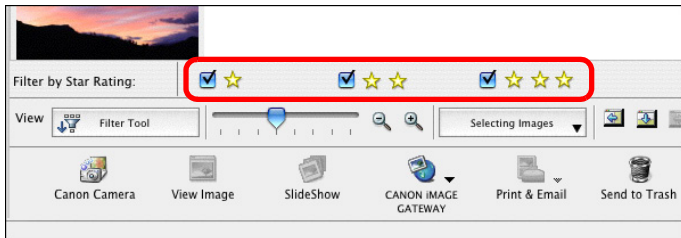
You can extract images displayed in the main window by the number of [ ☆ ] you have attached to them (ratings).

1 Click the [  Filter Tool ] button.




→ The extract function appears.

2 Checkmark the number of [ ☆ ] you want to extract and display.



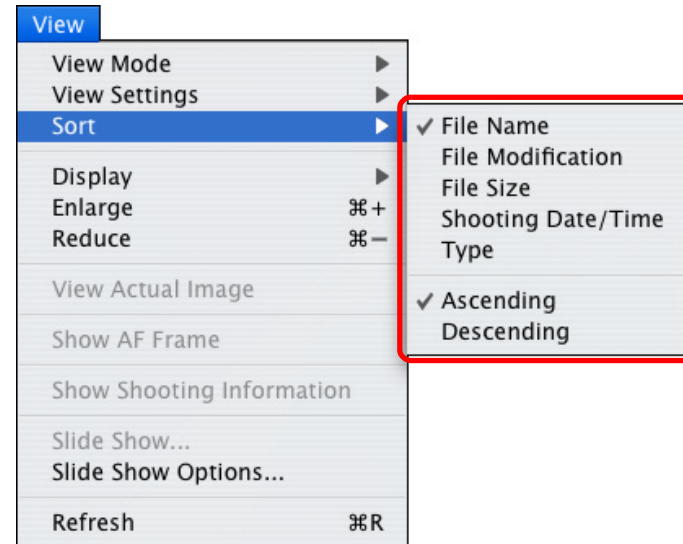
→ Only the images with the number of [ ☆ ] you have checkmarked are displayed in the main window.

● To quit the extract display, click the [  Filter Tool ] button again.

# Arranging Images in the Main Window

You can arrange images in the order of file size or shot date and time.

Select the [View] menu ► [Sort] ► desired item.



→ The images are arranged in the order according to the selected item.

Sort item	Description
File Name	Image file names are arranged in the order of 0 – 9 → a – z.
File Modification Date	Images are arranged in the order of most recently updated.
File Size	Images are arranged in the order of the smallest file size.
Shooting Date/Time	Images are arranged in the order of most recently shot.
Type	Images are arranged in the order of BMP images → RAW images → JPEG images → PICT images → TIFF images.
<b>Ascending</b>	Images are arranged from top to bottom in order of sorting criteria.
<b>Descending</b>	Images are arranged from bottom to top in order of sorting criteria.

Introduction

Table of Contents

Basic Operation

Advanced Operation

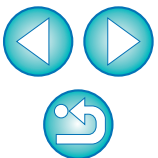
High-Level Functions

Preferences

Reference

Contents Lookup

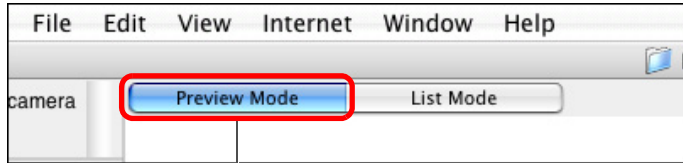
Index



# Efficiently Checking/Sorting Images

With Preview Mode that displays images as thumbnails and as single images in the same window, you can sort images by the number of [ ☆ ] while checking efficiently. You can also simultaneously check shooting information for images.

## 1 Enable Preview Mode.



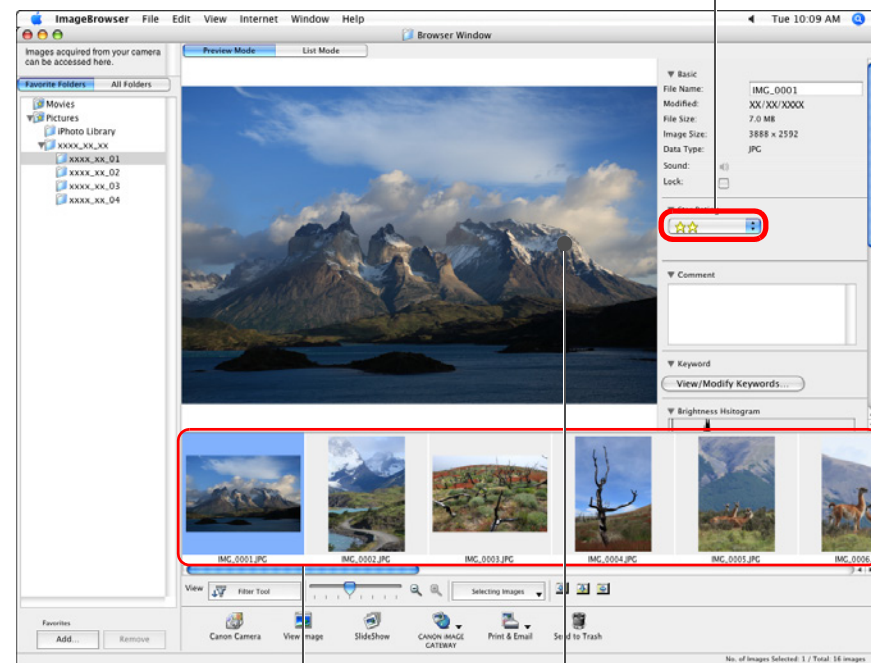
Click

→ The main window display switches to Preview Mode.

## 2 Click on a thumbnail image to switch to the image you want to check, and then sort with the number of [ ☆ ].

Select the number of [ ☆ ] from the list

### Preview Mode



The selected image in the thumbnail image display area is enlarged in the center of the window

Thumbnail image display area

Introduction

Table of Contents

Basic Operation

Advanced Operation

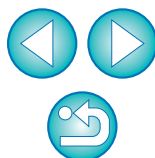
High-Level Functions

Preferences

Reference

Contents Lookup

Index



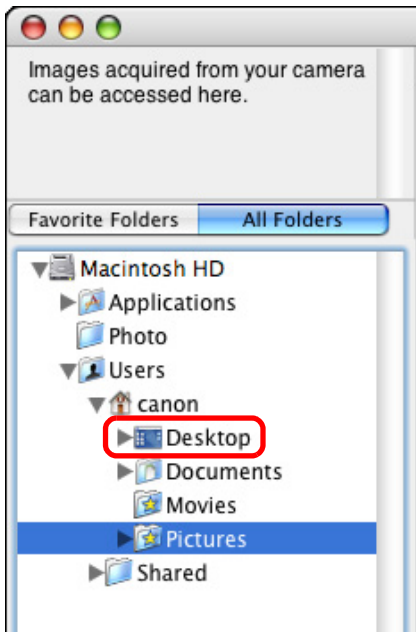
# Organizing Images

This section explains functions that are useful for organizing images such as creating new folders for saving sorted images, moving and copying images and deleting unwanted images.

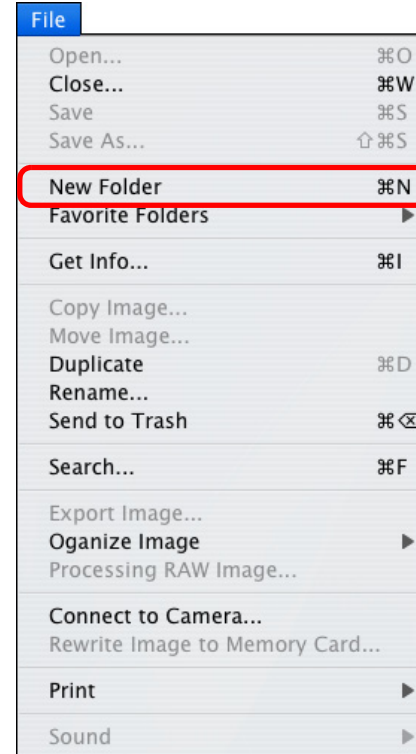
## Creating a Folder for Saving Images

You can create a folder to save sorted images.

- 1 In the folder area, select the location where the new folder is to be created.



- 2 Select the [File] menu ► [New Folder].



→ The [New Folder] window appears.

- 3 Enter a folder name and click the [OK] button.  
→ The new folder is created in the folder selected in step 1.

Introduction

Table of Contents

Basic Operation

Advanced Operation

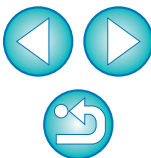
High-Level Functions

Preferences

Reference

Contents Lookup

Index

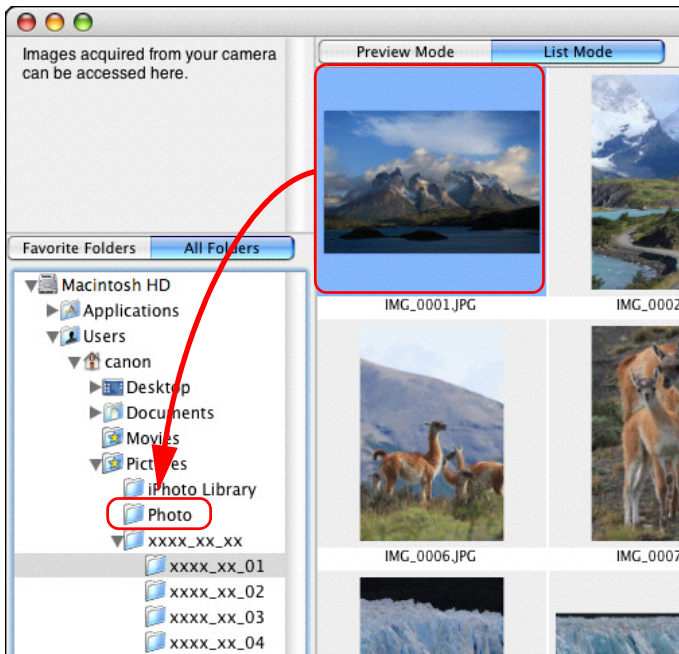


## Moving Images

You can move or copy images to separate folders and organize them according to shot date or theme.

### Drag the image to be moved or copied.

- To move: Drag the image and release when the image is in the destination folder.
- To copy: Drag the image while holding down the < option > key and release when the image is in the destination folder.



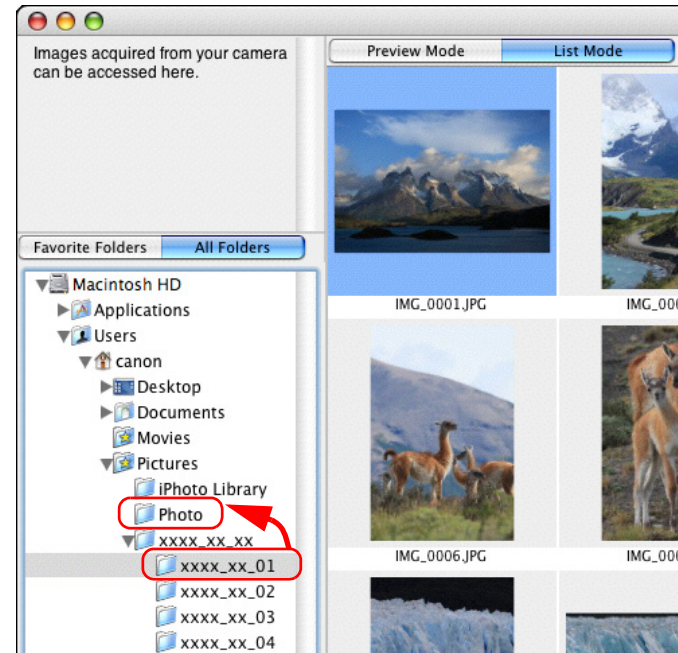
→ The image is moved or copied to the folder it was dragged to.

## Moving Images in Folders

You can move or copy folders that contain images, and organize images in folders.

### Drag the folder to be moved or copied.

- To move: Drag the folder and release when the folder is in the destination folder.
- To copy: Drag the folder while holding down the < option > key and release when the folder is in the destination folder.



→ The folder is moved or copied to the folder it was dragged to.

Introduction

Table of Contents

Basic Operation

Advanced Operation

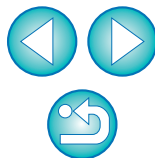
High-Level Functions

Preferences

Reference

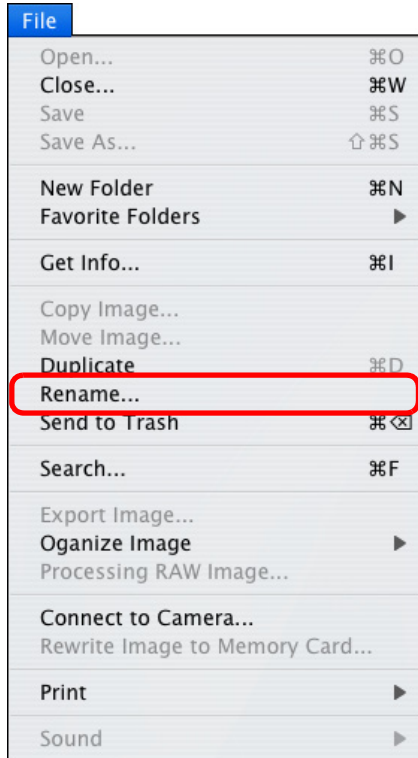
Contents Lookup

Index



## Changing File and Folder Names for Images

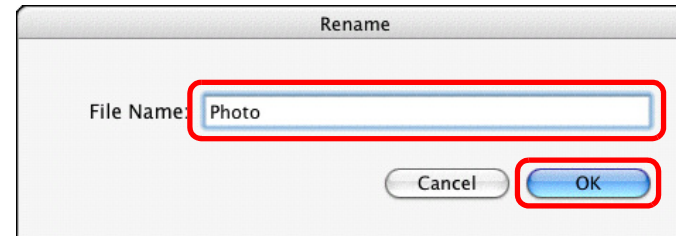
- 1 In the main window, select the image whose name you want to change, or, in the folder area, select the folder whose name you want to change.
- 2 Select the [File] menu ► [Rename].



→ The [Rename] window appears.

- 3 Enter the file or folder name of the image and then click the [OK] button.

Rename window



→ The file or folder name changes to the new one.



- You can also change the file name in the [File Information] window (p.41) or in the information display area (p.64) in Preview Mode.
- You can also change the folder name in the [File Information] window (p.41).

Introduction

Table of Contents

Basic Operation

Advanced Operation

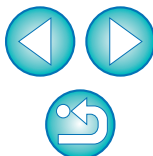
High-Level Functions

Preferences

Reference

Contents Lookup

Index

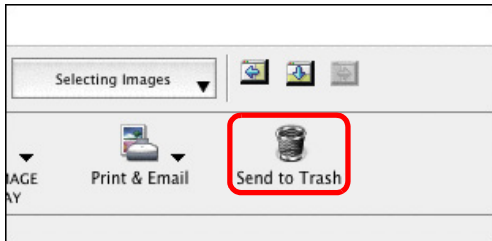


## Deleting an Image or Folder

Deleted images and folders cannot be recovered. Also, take care when deleting folders as all the images inside a folder will also be deleted.

**1** In the main window, select the image you want to delete, or in the folder area, select the folder you want to delete.

**2** Click [Send to Trash].

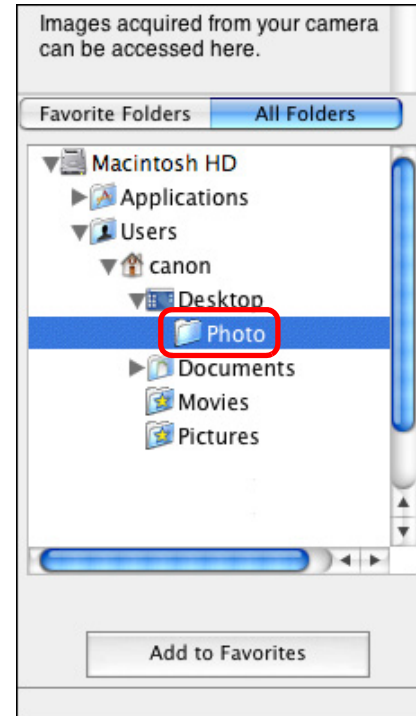


- The image or folder is moved to the [Trash] and is deleted from IB.
- If the [Move to Trash?] dialog box appears, click the [Yes] button.
- To delete an image or a folder from your computer, on the desktop, select the [Finder] menu ► [Empty Trash].

## Registering Frequently-Used Folders as Favorite Folders

You can register shortcuts for frequently-used folders in the [Favorite Folders] tab sheet in the folder area to make images easier to find. Please note that because the [Pictures] folder is registered as a favorite folder by default, the folder icon appears as [📁📖].

**1** Select the folder you want to register.



**2** Click the [Add to Favorites] button.

- The folder icon changes to [📁📖] and the folder is registered as a favorite folder.

Introduction

Table of Contents

Basic Operation

Advanced Operation

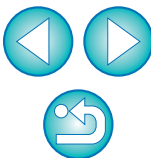
High-Level Functions

Preferences

Reference

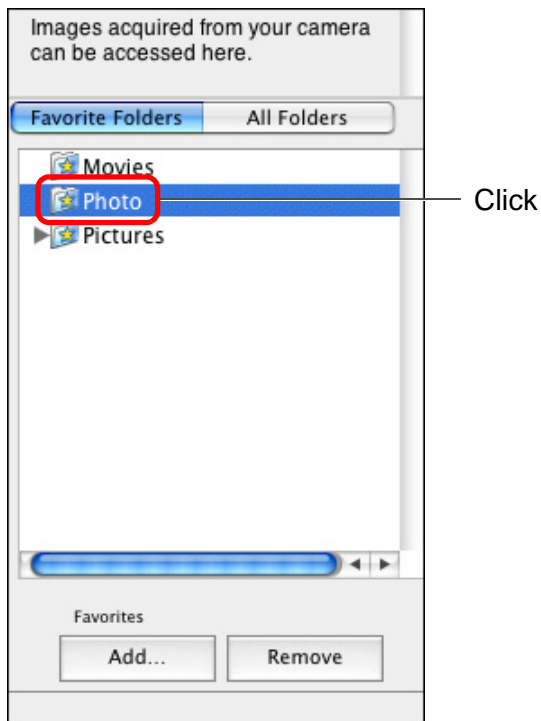
Contents Lookup

Index



**3** Select the [Favorite Folders] tab sheet.

**4** Select the registered folder to display the images inside the folder.



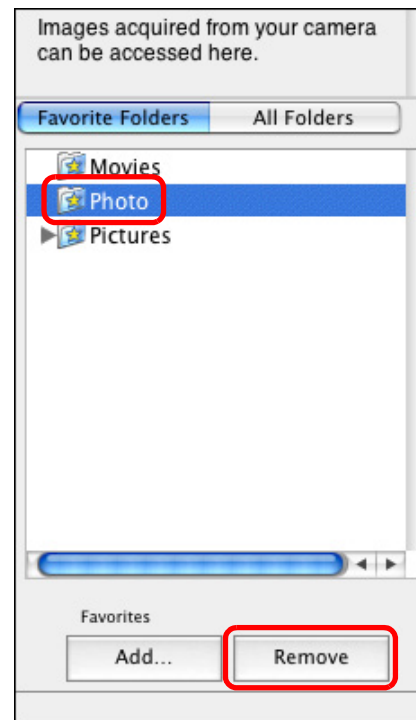
→ The images inside the folder appear.

## Deleting Favorite Folders

If you no longer need a folder you have registered in the [Favorite Folders] tab sheet, you can delete it from this tab sheet.

Please note that as registered folders are shortcuts, the original folder will not be deleted when you delete the shortcut.

**In the [Favorite Folders] tab sheet, select the folder you want to delete and then click the [Remove] button.**



→ The folder is deleted.

**? If you have edited or deleted images in folders you have registered as favorites**

Any changes done to images inside registered folders will be applied to the original images. Therefore, please be aware that by editing or deleting images inside registered folders, you are in fact editing or deleting the original images.

Introduction

Table of Contents

Basic Operation

Advanced Operation

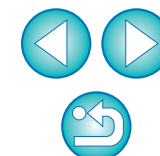
High-Level Functions

Preferences

Reference

Contents Lookup

Index



# Editing an Image

If the brightness or color of images is different from what you visualized when you shot the photo, you can adjust an image using the editing functions to bring them closer to what you visualized.

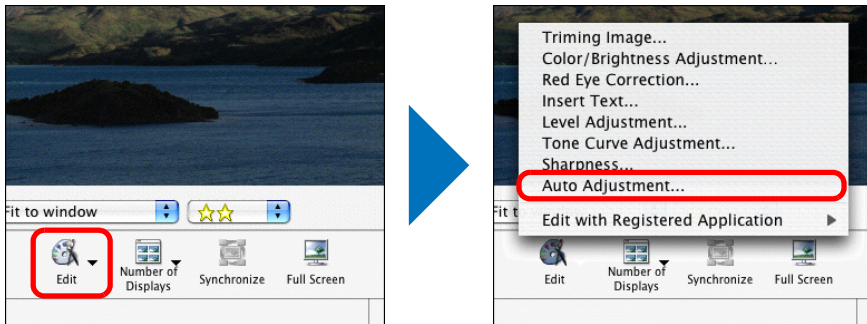
This section explains about automatic adjustment of images, adjustment of brightness/saturation, trimming images, inserting text into images, adjustment of sharpness and red-eye correction.

JPEG images deteriorate slightly when edited and saved, and the image before editing cannot be recovered. For this reason, an edited JPEG image should be saved as a separate image from the original image. Chapter 3 explains about high-level editing functions other than those described above and adjustment of RAW images.

## Automatic Adjustment Using IB

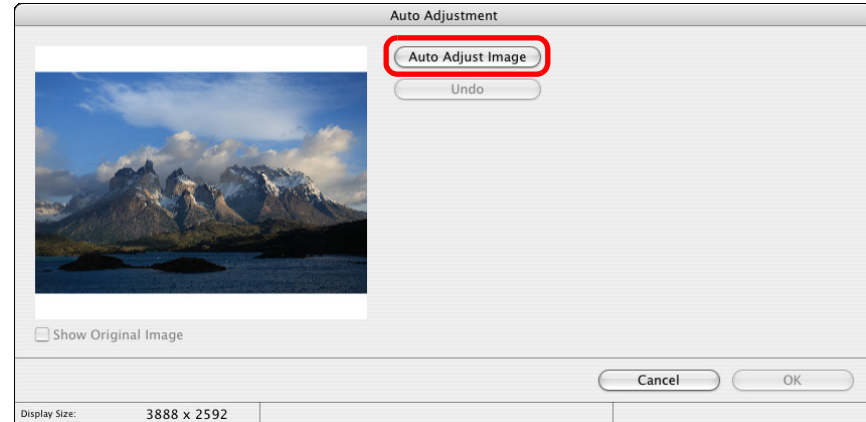
The brightness and colors, etc. of the image are automatically adjusted.

- 1 Display the image to edit in the viewer window (p.16).
- 2 Click [Edit] and then select [Auto Adjustment] in the menu that appears.



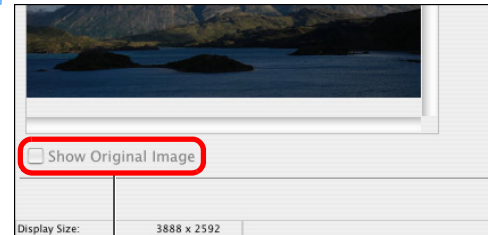
→ The [Auto Adjustment] window appears.

- 3 Click the [Auto Adjust Image] button.  
Auto Adjustment window



→ The image is adjusted.

- 4 Check the adjustments.



Checkmark to display the image before adjustments

- 5 Click the [OK] button.  
→ The [Auto Adjustment] window closes.

Introduction

Table of Contents

Basic Operation

Advanced Operation

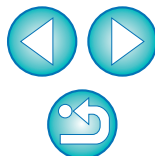
High-Level Functions

Preferences

Reference

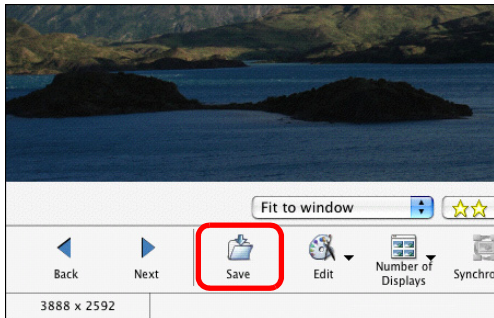
Contents Lookup

Index



## 6 Save as a separate image.

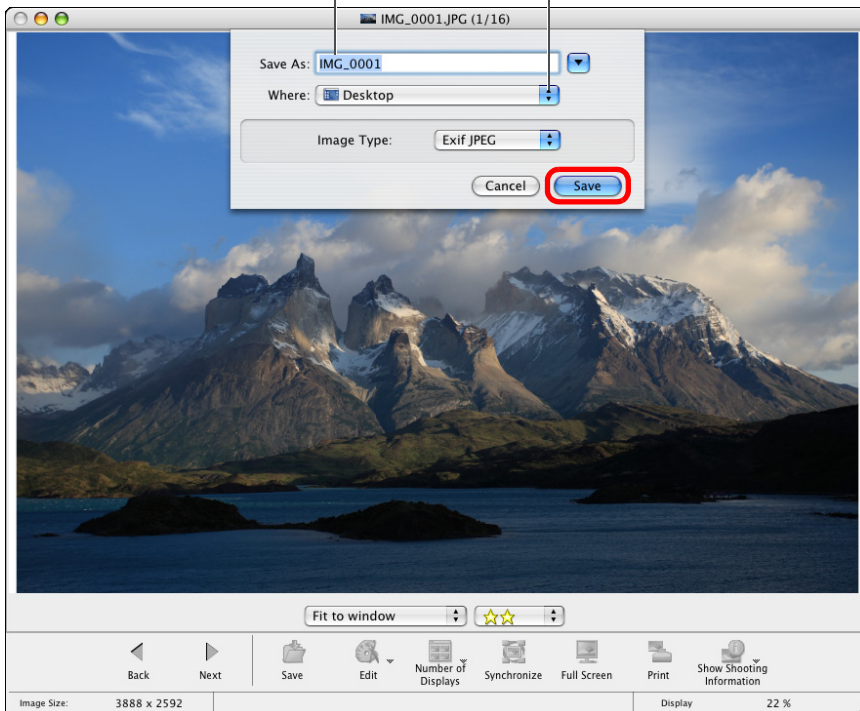
- In the viewer window, click [Save].



→ The save dialog box appears.

## 7 Enter a new name, specify the save location and then click the [Save] button.

Enter the new name      Specify the save location



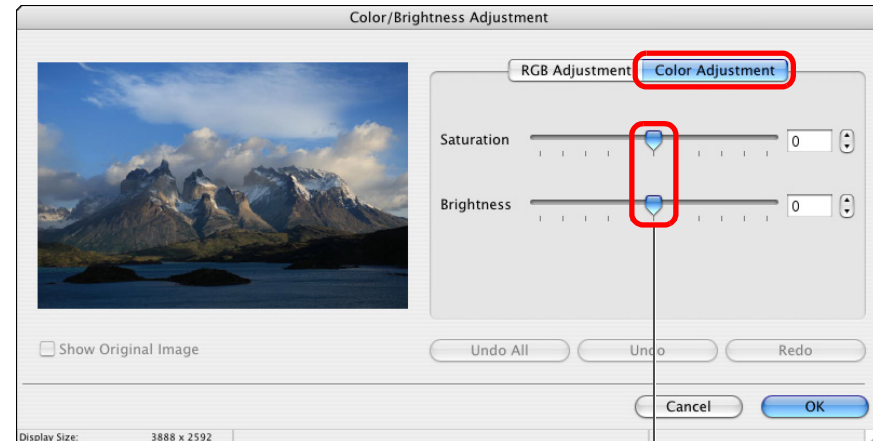
→ The edited image is saved as a separate image from the original image.

## Adjusting Color and Brightness

You can adjust the brightness and color (saturation) of images.

- 1 Display the image to edit in the viewer window (p.16).
- 2 Click [Edit] and then select [Color/Brightness Adjustment] in the menu that appears (p.25).  
→ The [Color/Brightness Adjustment] window appears.
- 3 Select the [Color Adjustment] tab sheet and adjust the image.

Color/Brightness Adjustment window



Drag to the left or right to adjust

- Move the slider to the right to make the [Saturation] of an image to appear more vivid and the [Brightness] appear brighter. Move the slider to the left to make the [Saturation] of an image weaker, and the [Brightness] of an image appears darker.

→ The image is adjusted.

## 4 Check the adjustments and then click the [OK] button.

## 5 Save the image as a separate image (Description on the left).

Introduction

Table of Contents

Basic Operation

Advanced Operation

High-Level Functions

Preferences

Reference

Contents Lookup

Index



## Trimming an Image

You can trim only the part of an image you need, or change the composition of an image where an image shot horizontally becomes vertical.

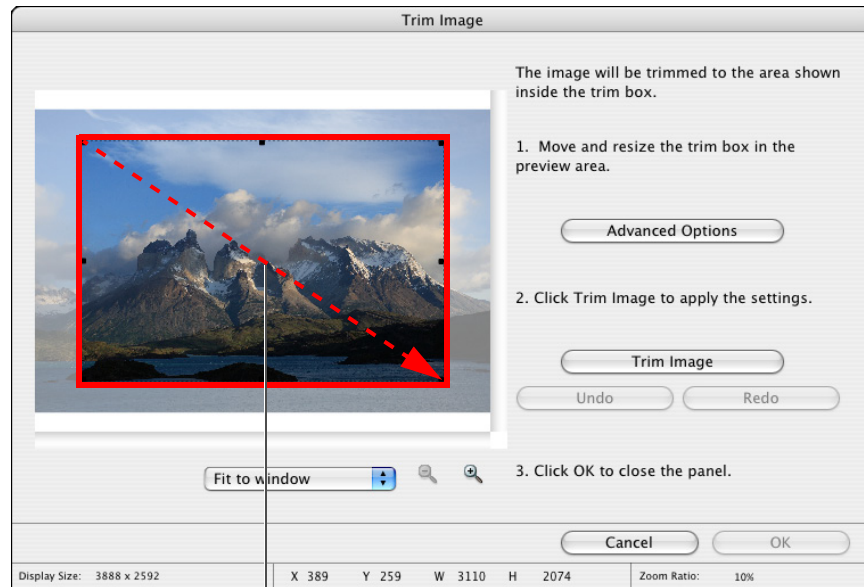
**1** Display the image to edit in the viewer window (p.16).

**2** Click [Edit] and then select [Trim Image] in the menu that appears (p.25).

→ The [Trim Image] window appears.

**3** Drag the trimming range.

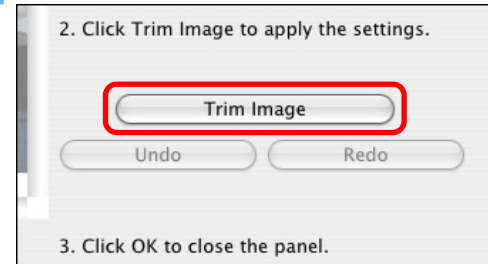
Trim Image window



Drag

- The trimming range can be moved by dragging.
- You can change the trimming range by dragging the four corners and the four sides of the trimming range.

**4** Click the [Trim Image] button.



→ The image is trimmed.

**5** Check the trimming and then click the [OK] button.

**6** Save the image as a separate image (p.26).

Introduction

Table of Contents

Basic Operation

Advanced Operation

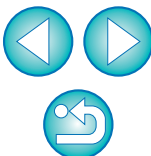
High-Level Functions

Preferences

Reference

Contents Lookup

Index



## Inserting Text into Images

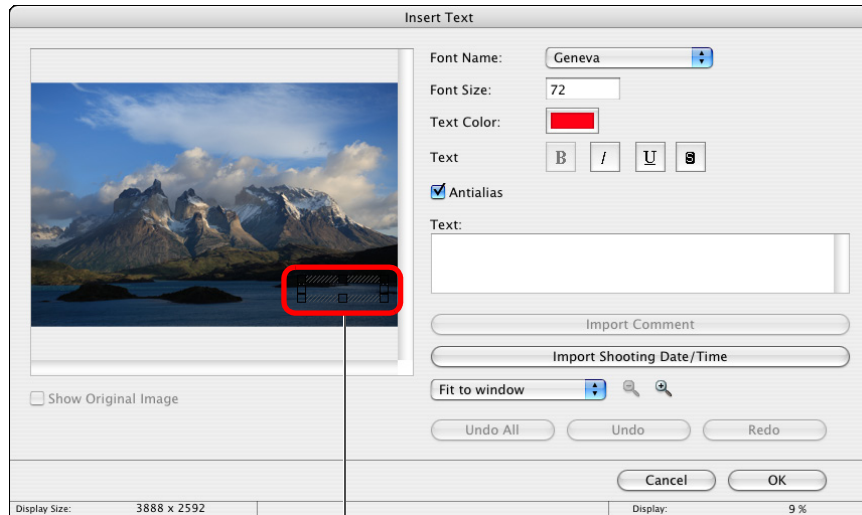
You can insert the date and time you shot an image and text into an image as text.

**1** Display the image to edit in the viewer window (p.16).

**2** Click [Edit] and then select [Insert Text] in the menu that appears (p.25).

→ The [Insert Text] window appears.

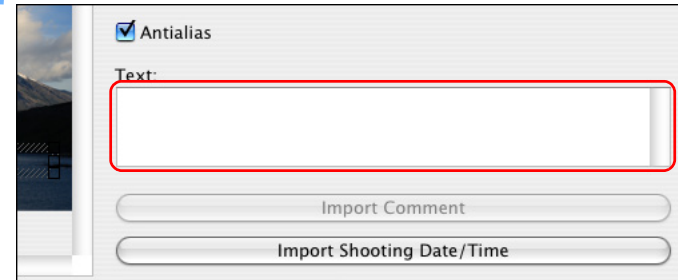
**3** Drag the range for inserting text.  
Insert Text window



Drag

- The text insertion range can be moved by dragging.
- You can change the text insertion range by dragging the four corners and the four sides of the text insertion range.

**4** Using the keyboard, enter the text you want to insert.



→ The text you enter appears in the window.

**5** Check your entry and then click the [OK] button.

**6** Save the image as a separate image (p.26).

Introduction

Table of Contents

Basic Operation

Advanced Operation

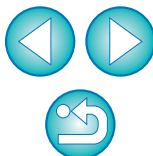
High-Level Functions

Preferences

Reference

Contents Lookup

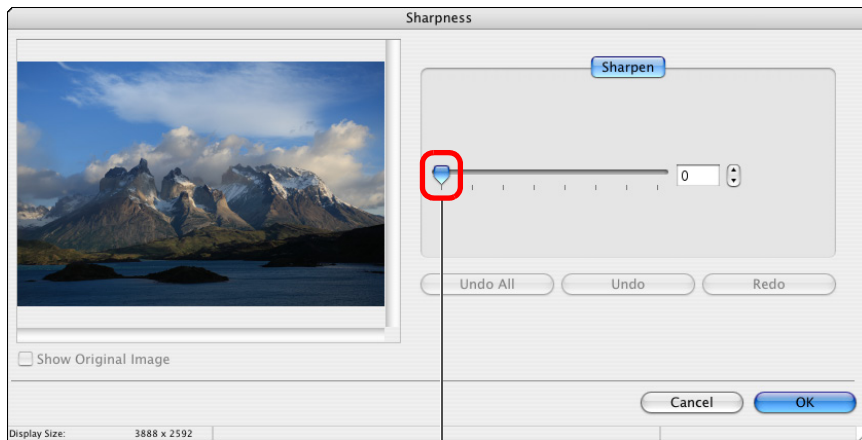
Index



## Adjusting Sharpness

You can make the overall atmosphere of an image harder or softer.

- 1 Display the image to edit in the viewer window (p.16).
- 2 Click [Edit] and then select [Sharpness] in the menu that appears (p.25).  
→ The [Sharpness] window appears.
- 3 Adjust the image.  
Sharpness window



Drag right to adjust

- Move the slider to the right to make an image harder and to the left to make an image softer.
- The image is adjusted.

4 Check the adjustments and then click the [OK] button.

5 Save the image as a separate image (p.26).

Introduction

Table of Contents

Basic Operation

Advanced Operation

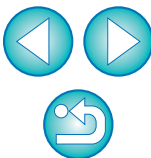
High-Level Functions

Preferences

Reference

Contents Lookup

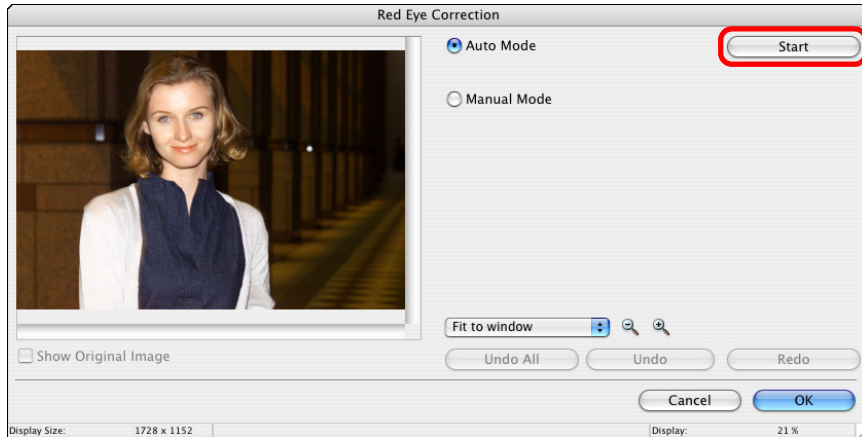
Index



## Correcting Red-Eye Automatically

You can automatically detect and correct red-eye that occurs when you photograph people using a flash.

- 1 Display the image to edit in the viewer window (p.16).
- 2 Click [Edit] and then select [Red Eye Correction] in the menu that appears (p.25).  
→ The [Red Eye Correction] window appears.
- 3 Click the [Start] button.  
Red Eye Correction window



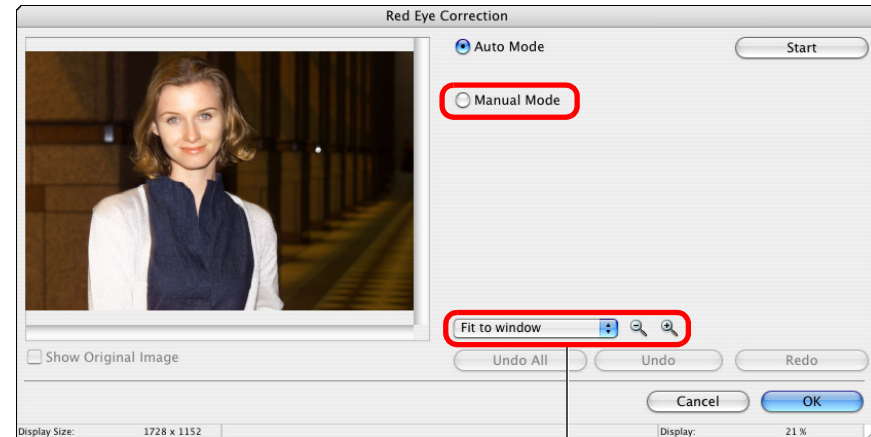
→ The image is corrected.

- 4 Check the corrections and then click the [OK] button.
- 5 Save the image as a separate image (p.26).

## Correcting Red-Eye Manually

You can manually correct red-eye that cannot be corrected automatically.

- 1 Display the [Red Eye Correction] window (Description on the left).
- 2 Display the image enlarged and then select [Manual Mode].



Display the image enlarged

Introduction

Table of Contents

Basic Operation

Advanced Operation

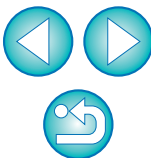
High-Level Functions

Preferences

Reference

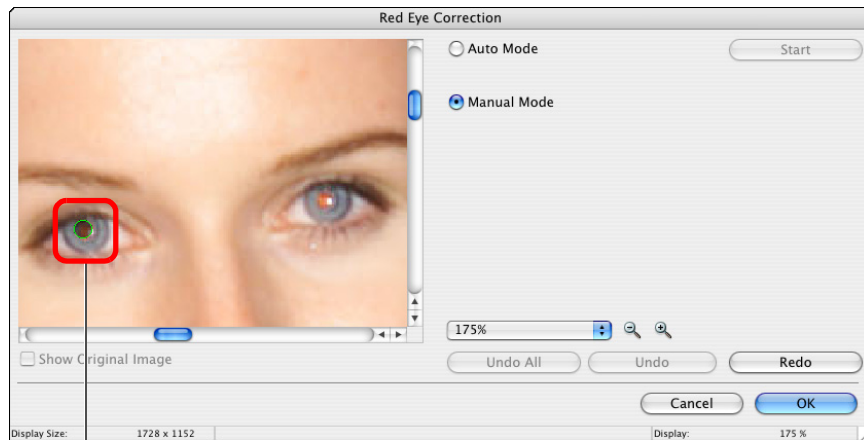
Contents Lookup

Index



### 3 Click on the places in the image you want to correct.

→ When you move the mouse cursor on the places to be corrected, [○] is displayed.



Click

→ The image is corrected.

### 4 Check the corrections and then click the [OK] button.

### 5 Save the image as a separate image (p.26).

## Utilizing Your Images

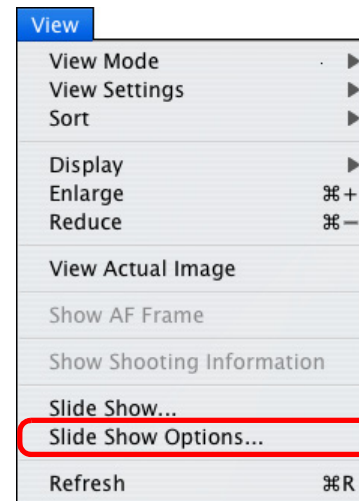
You can view your images as a slide show, send them in an e-mail or use them as wallpaper or screen savers for your computer.

### Viewing Images as a Slide Show

You can display selected images across the whole window and switch between them as a slide show.

#### 1 Select images.

#### 2 Select the [View] menu ► [Slide Show Options].



→ The [Slide Show Options] window appears.

Introduction

Table of Contents

Basic Operation

Advanced Operation

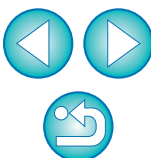
High-Level Functions

Preferences

Reference

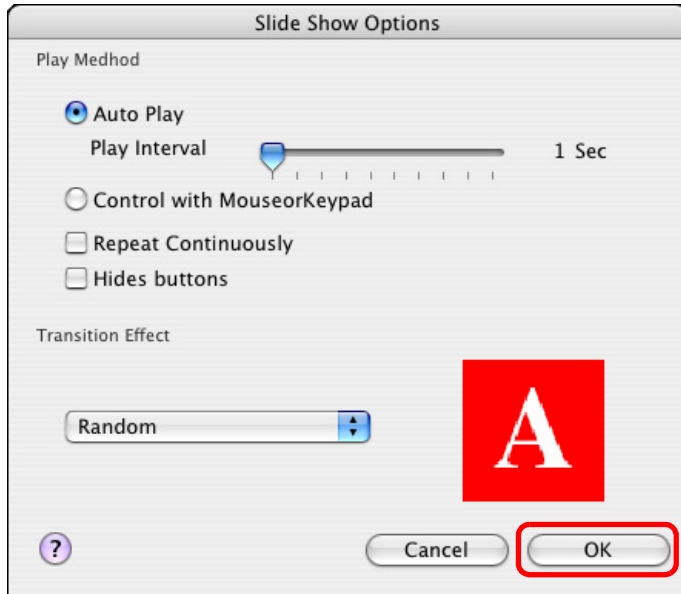
Contents Lookup

Index



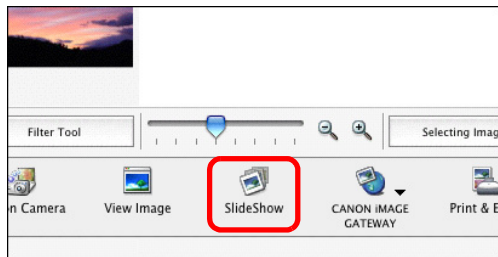
### 3 Set the play method and transition effect for the slide show and then click the [OK] button.

#### Slide Show Options window



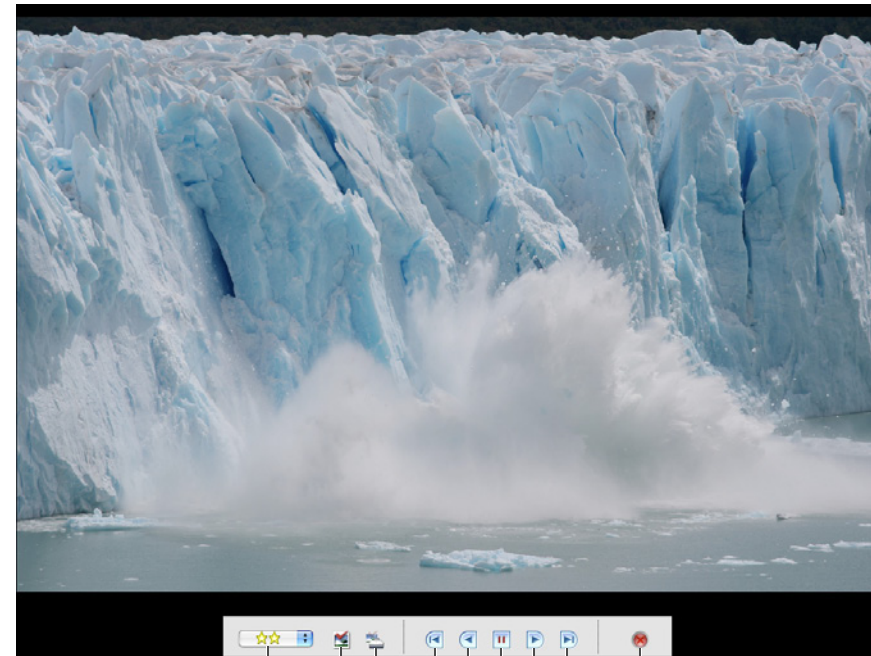
→ The [Slide Show Options] window closes.

### 4 Click [SlideShow].



→ The Slide Show window appears and the slide show begins.

#### Slide Show window



- Rating setting
- Selects the image\*1
- Prints the image\*2
- Switches to the first image
- Switches to the previous image
- Ends the slide show
- Switches to the last image
- Switches to the next image
- Pauses the slide show

\*1 The image is selected. When the slide show ends and returns to the main window, the image is displayed as being selected.

\*2 The image is selected for printing. When the slide show ends and returns to the main window, the print dialog box is displayed.

→ When all the images have been displayed, the Slide Show window closes and returns to the main window.

● To end the slide show half-way through, click [  ].

Introduction

Table of Contents

Basic Operation

Advanced Operation

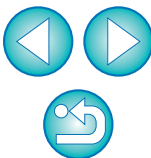
High-Level Functions

Preferences

Reference

Contents Lookup

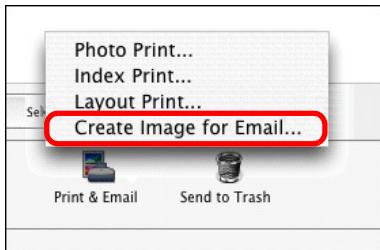
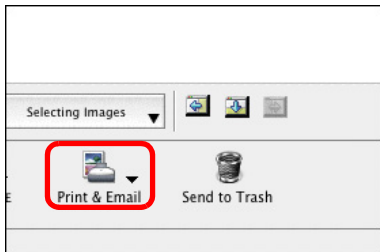
Index



## Sending an Image by E-Mail

You can attach a selected image to an e-mail and send it. The attached image to be sent is a copy of the original image and therefore the original image remains unaffected on your computer.

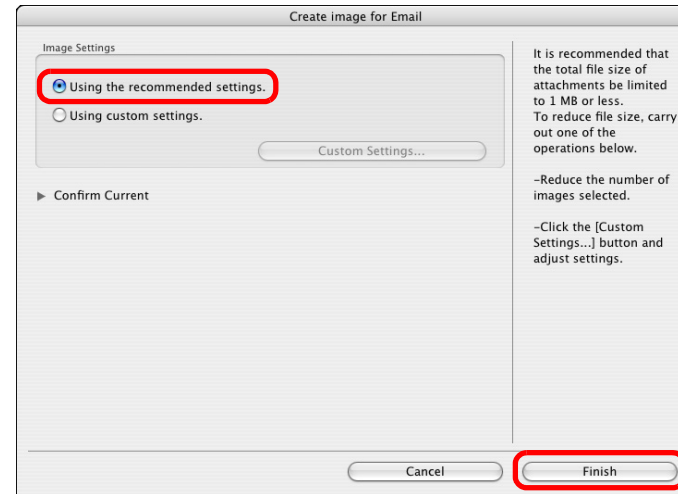
- 1 Select an image.
- 2 Click [Print & Email] and then select [Create Image for Email] in the menu that appears.



→ The [Create Image for Email] window appears.

- 3 Select [Using the recommended settings.] and then click the [Finish] button.

### Create Image for Email window



- The image is displayed in the main window and the e-mail software starts up.
- Attach to the e-mail [Email Images] in the folder area and then send the e-mail.

Introduction

Table of Contents

Basic Operation

Advanced Operation

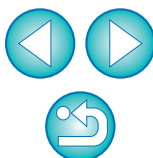
High-Level Functions

Preferences

Reference

Contents Lookup

Index



## Creating Wallpaper from an Image

You can make a selected image wallpaper for your computer. The JPEG image for the wallpaper (extension “.JPG”) is created using a copy of an image and therefore the original image remains unaffected.

1 Select an image.

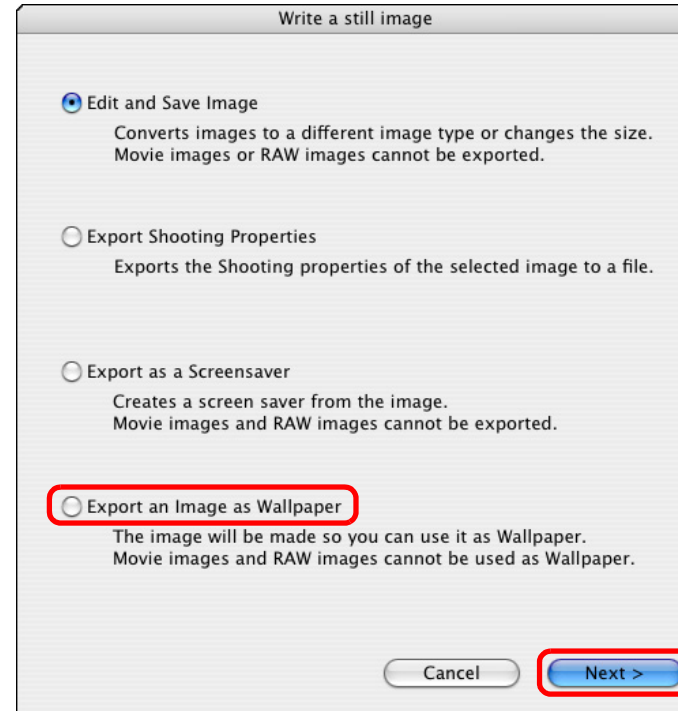
2 Select the [File] menu ► [Export Image].



→ The [Write a still image] window appears.

3 Select [Export an Image as Wallpaper] and then click the [Next] button.

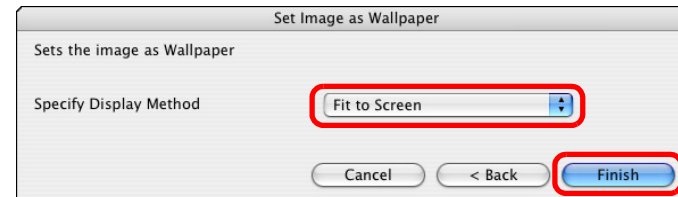
Write a still image window



→ The [Set Image as Wallpaper] window appears.

4 From the list box, select the wallpaper display method and then click the [Finish] button.

Set Image as Wallpaper window



→ The image you selected for your wallpaper is applied as wallpaper.

Introduction

Table of Contents

Basic Operation

Advanced Operation

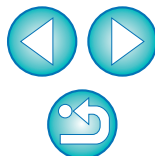
High-Level Functions

Preferences

Reference

Contents Lookup

Index



## ? To revert to the original wallpaper

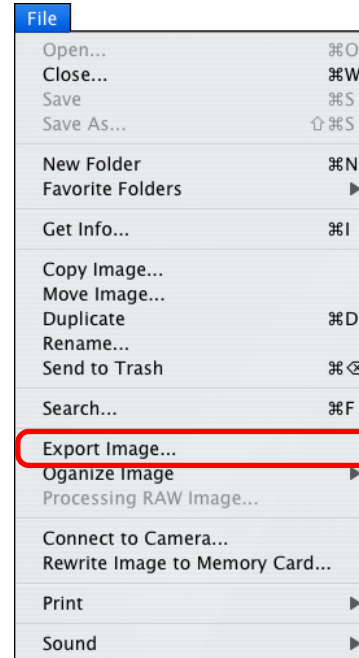
- 1 On the desktop, launch [System Preferences] from the Dock and then click [Desktop & Screen Saver].
- 2 Select the [Desktop] tab sheet.
- 3 Select the file for the wallpaper and then click [ ] to close the dialog box.

## Creating a Screen Saver from an Image

You can make a selected image a screen saver for your computer. The data for the screen saver (extension “.SLIDESAVER”) is created using a copy of an image and therefore the original image remains unaffected.

### 1 Select an image.

### 2 Select the [File] menu ► [Export Image].



→ The [Write a still image] window appears.

Introduction

Table of Contents

Basic Operation

Advanced Operation

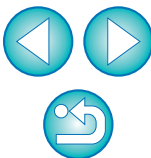
High-Level Functions

Preferences

Reference

Contents Lookup

Index

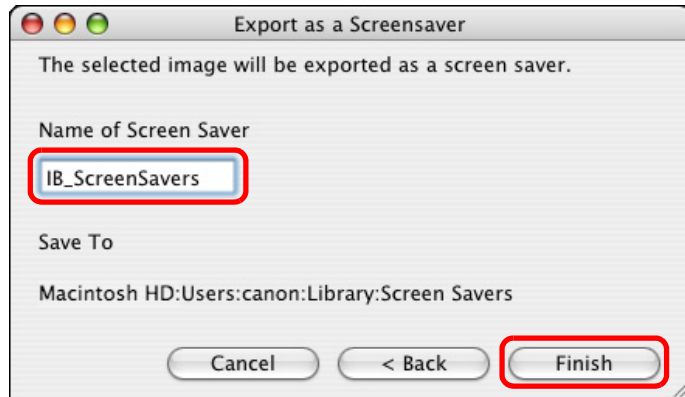


**3** Select [Export as a Screensaver] and then click the [Next] button.

→ The [Export as a Screensaver] window appears.

**4** Using the keyboard, enter a name and then click the [Finish] button.

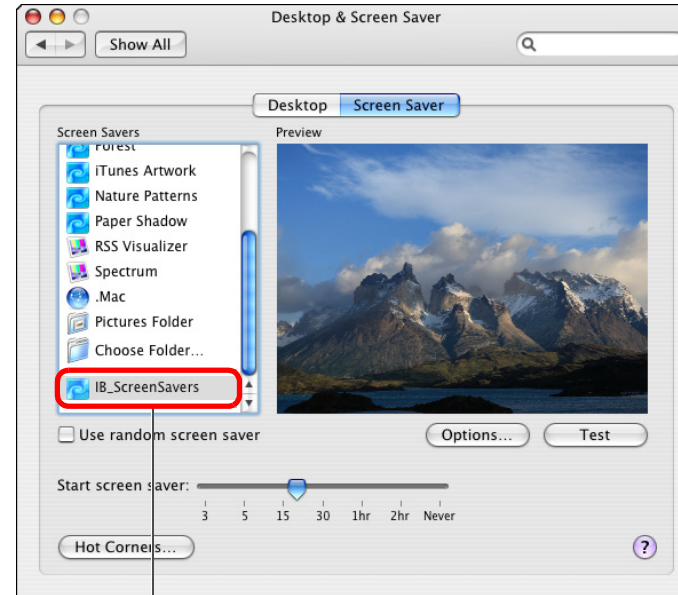
Export as a Screensaver window



● The screen saver data is saved in the [Screen Savers] folder.

**5** Specify the saved screen saver on your computer.

● On the desktop, launch [System Preferences] from the Dock and then click [Desktop & Screen Saver] ► [Screen Saver] tab sheet to display the [Screen Saver] tab sheet.



Select the saved screen saver data

**6** Close the [Desktop & Screen Saver] window.

● Click [Close] on the top left of the dialog box.

Introduction

Table of Contents

Basic Operation

Advanced Operation

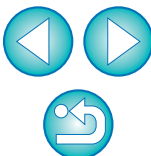
High-Level Functions

Preferences

Reference

Contents Lookup

Index

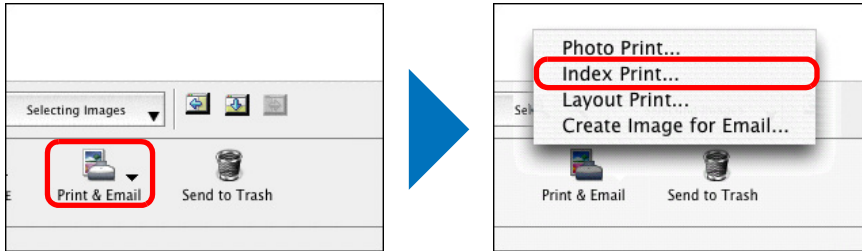


# Printing Multiple Images on One Sheet of Paper (Index Printing)

You can arrange multiple images in index format and print them on one sheet of paper.

1 Select the images.

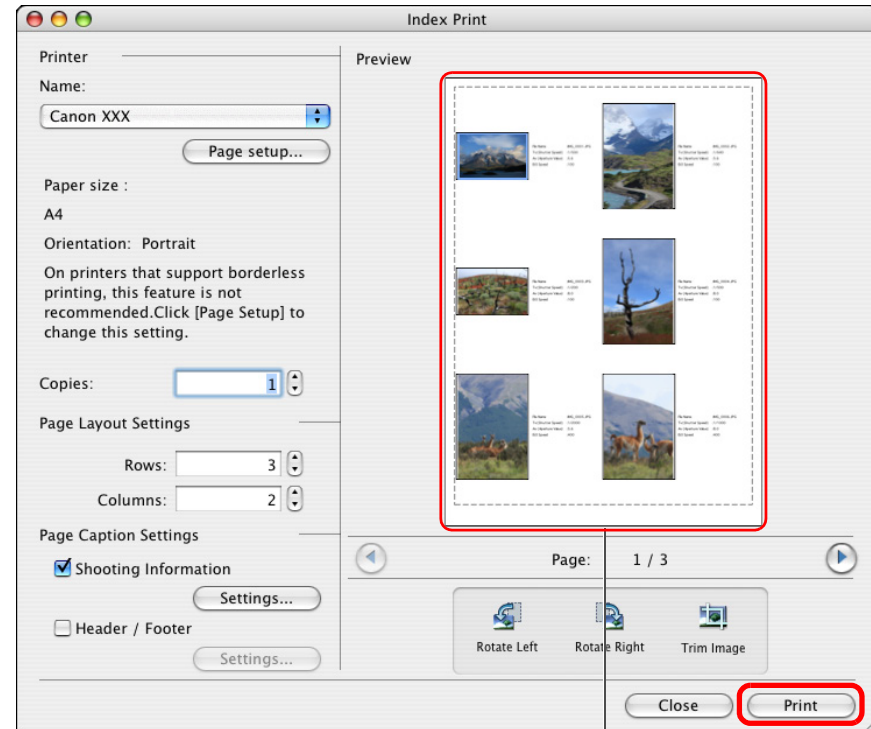
2 Click the [Print & Email] button and then select [Index Print] from the menu that appears.



→ The [Index Print] window appears.

3 Specify settings such as the paper type and the number of prints, and then click the [Print] button.

Index Print window



Print preview

→ Printing begins.

Introduction

Table of Contents

Basic Operation

Advanced Operation

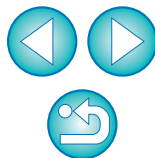
High-Level Functions

Preferences

Reference

Contents Lookup

Index

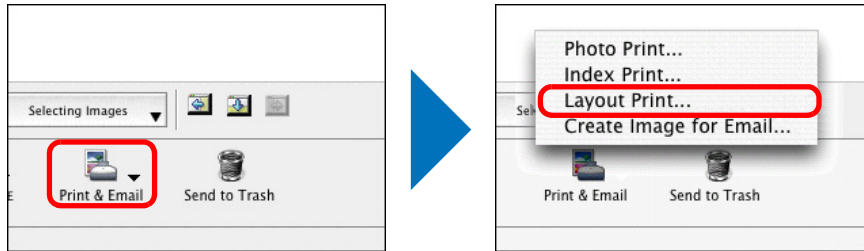


# Arranging Images Freely and Printing (Layout Printing)

You can lay out images freely and then print them.

1 Select the images.

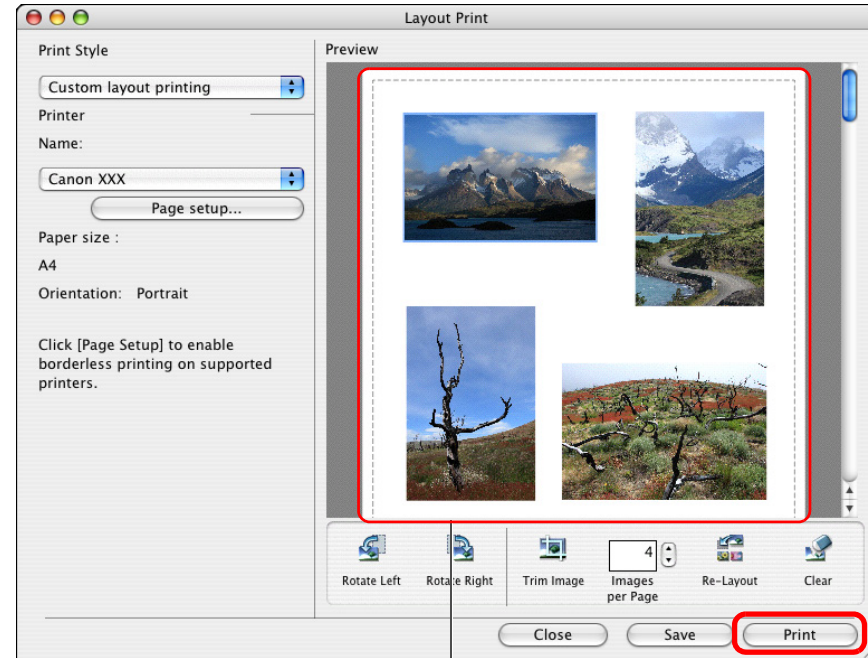
2 Click the [Print & Email] button and then select [Layout Print] from the menu that appears.



→ The [Layout Print] window appears.

3 Lay out your images by dragging them and then click the [Print] button.

Layout Print window



Print preview

→ Printing begins.

Introduction

Table of Contents

Basic Operation

Advanced Operation

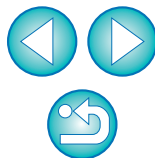
High-Level Functions

Preferences

Reference

Contents Lookup

Index



# 3 High-Level Functions

Comparing Multiple Images .....	40
Viewing Shooting Information for an Image .....	41
Changing the Size and Type of an Image and Saving .....	41
Exporting Shooting Information.....	42
Organizing Images Using High-Level Functions .....	43
Setting Keywords in Images .....	43
Entering Comments into Images .....	43
Saving Multiple Images with New File Names.....	44
Classifying Images by Shot Date.....	44
Searching for Images .....	46
Performing Advanced Editing.....	47
Adjusting the Color of an Image in RGB.....	47
Adjusting the Brightness Level .....	48
Adjusting the Tone Curve .....	48
Transferring Images to Other Image Editing Software...	49
Merging Images to Create Panorama Images.....	50
Adjusting RAW Images .....	51
Applying Picture Style Files .....	53
White Balance Files and Tone Curve Files.....	54
Saving White Balance Files .....	54
Saving Tone Curve Files (Excludes the EOS-1Ds Mark III and EOS-1D Mark III) .....	55

Adding Sound to Images/Playing Back .....	55
Adding Sound to Images .....	55
Playing Back Sound .....	55

Introduction

Table of Contents

Basic Operation

Advanced Operation

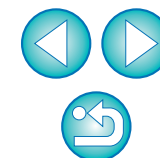
**High-Level Functions**

Preferences

Reference

Contents Lookup

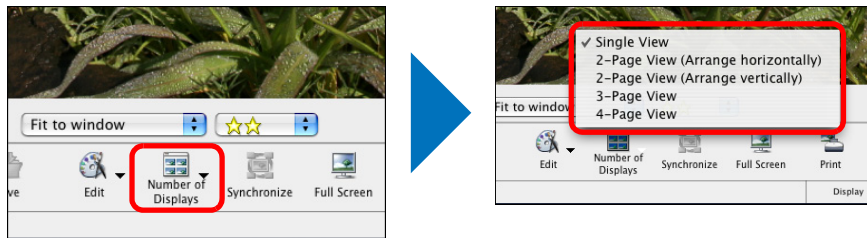
Index



# Comparing Multiple Images

To compare multiple images, you can split the viewer window into two, three or four and display multiple images at the same time. You can also align the display position of enlarged images and compare.

- 1 In the main window, select the images you want to compare (p.10).
- 2 Click [View Image] (p.65).  
→ The viewer window appears.
- 3 Click [Number of Displays] and select the number of images you want to display at the same time.

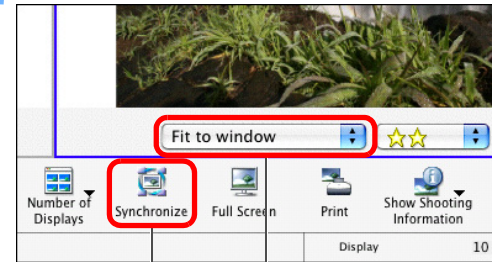


→ The viewer window is split and the multiple images are displayed at the same time.

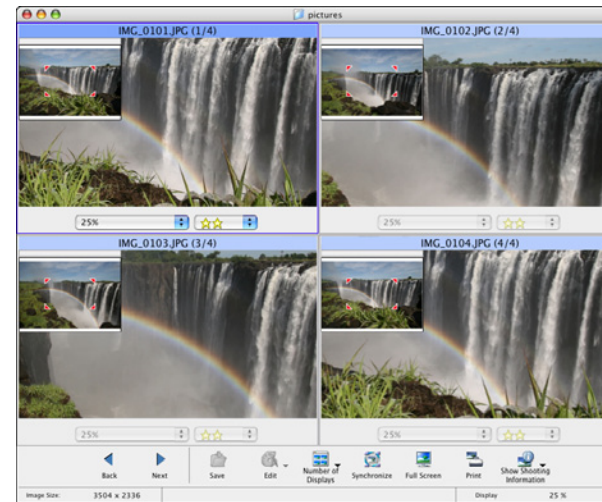
## Example of display when [4-Page View] is selected



## 4 Click [Synchronize] and then enlarge the image.



Click      Select the display magnification



→ The synchronize display appears and all the images are displayed at the same display magnification and in the same position.

→ The navigator window that displays the enlargement display position appears and you can check and move the enlargement display position (p.17).

- Click [Synchronize] again to cancel the synchronize display. You can now change the display magnification and move the enlargement display position for each image.
- To return to full view, select [Fit to window] from the list box under each image.
- To cancel the split display, click [Number of Displays] at the bottom of the window and then select [Single View] from the menu that appears.

Introduction

Table of Contents

Basic Operation

Advanced Operation

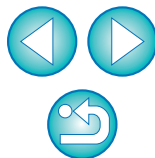
High-Level Functions

Preferences

Reference

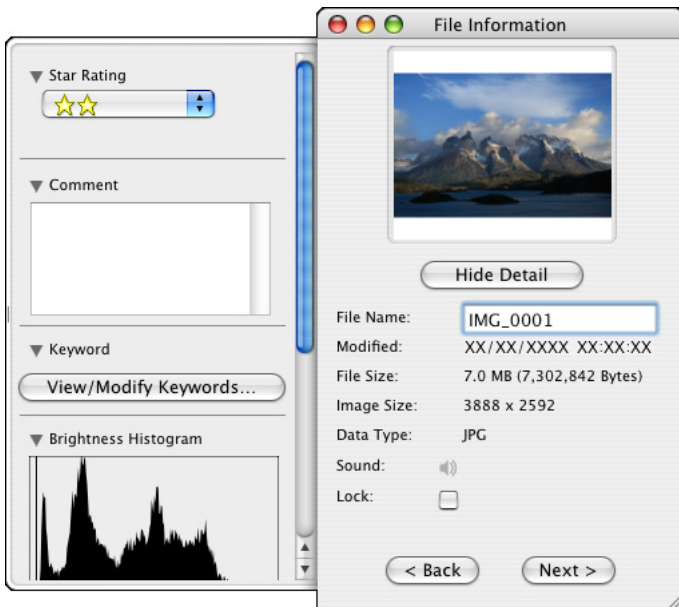
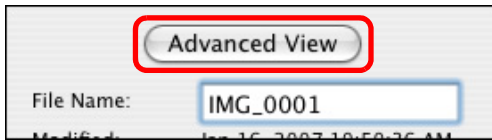
Contents Lookup

Index



# Viewing Shooting Information for an Image

- 1 Display List Mode (p.65).
- 2 Select the image for which you want to view the information.
- 3 Select the [File] menu ► [Get Info].  
→ The [File Information] window appears.
- 4 Click the [Advanced View] button.

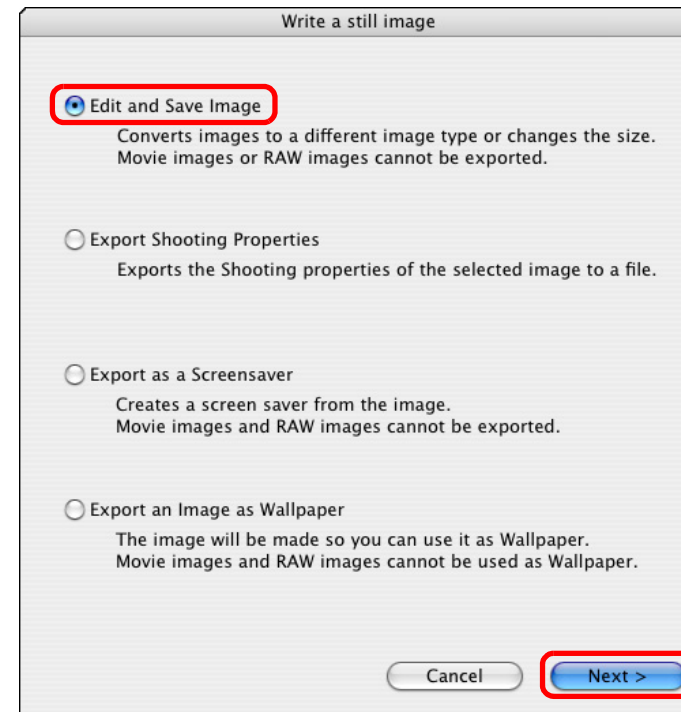


In Preview Mode, the same information as the [File Information] window is displayed on the information display area (p.64).

# Changing the Size and Type of an Image and Saving

You can change the size of an image or convert it to a TIFF image (extension “.TIFF”) or a PICT image (extension “.PCT”) and save it. Because the image is saved as a separate image, the original image remains unaffected.

- 1 Select an image.
- 2 Select the [File] menu ► [Export Image].  
→ The [Write a still image] window appears.
- 3 Select [Edit and Save Image] and then click the [Next] button.



→ The [Edit and Save Image] window appears.

Introduction

Table of Contents

Basic Operation

Advanced Operation

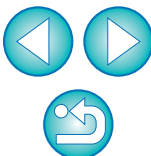
High-Level Functions

Preferences

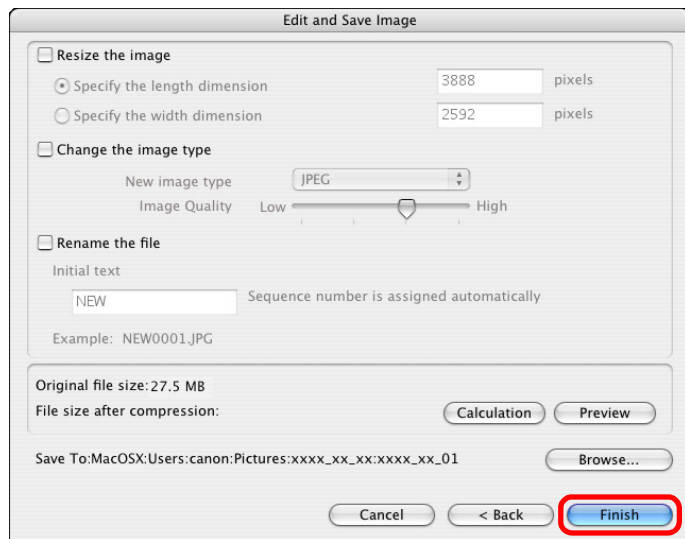
Reference

Contents Lookup

Index



## 4 Specify the image size, type, file name and save destination, and then click the [Finish] button.

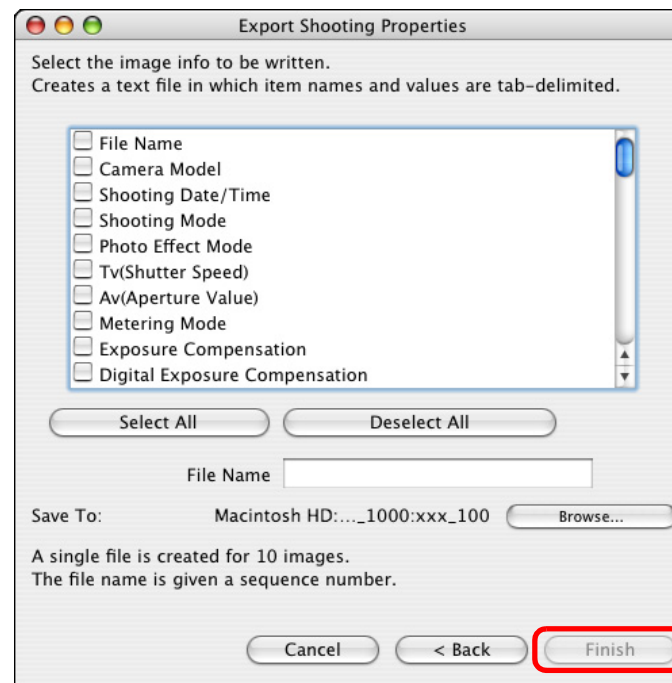


→ The image is saved as an image separate from the original image.

# Exporting Shooting Information

You can export as a text file the shooting information recorded to the image.

- 1 Select an image.
- 2 Select the [File] menu ► [Export Image].  
→ The [Write a still image] window appears.
- 3 Select [Export Shooting Properties] and then click the [Next] button.  
→ The [Export Shooting Properties] window appears.
- 4 Specify the export shooting information, the file name, and the save destination, and then click the [Finish] button.



→ The shooting information is saved as a text file (extension ".TXT").

Introduction

Table of Contents

Basic Operation

Advanced Operation

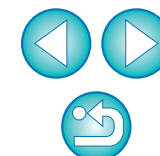
High-Level Functions

4 Preferences

Reference

Contents Lookup

Index



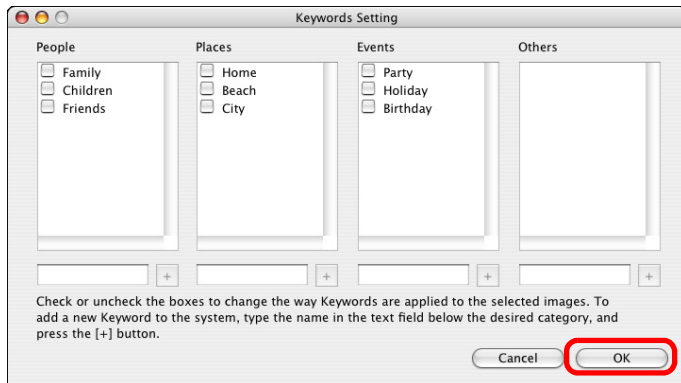
# Organizing Images Using High-Level Functions

You can organize images using high-level functions such as setting keywords and entering comments, renaming multiple files in a single operation and classifying images by shot year/month/date, all of which are useful when organizing your images.

## Setting Keywords in Images

You can set keywords to identify images. The set keywords are also useful when searching for images (p.46).

- 1 Select an image.
- 2 Select the [Edit] menu ► [Keyword] ► [Settings].  
→ The [Keywords Setting] window appears.
- 3 Select the keyword(s) and then click the [OK] button.

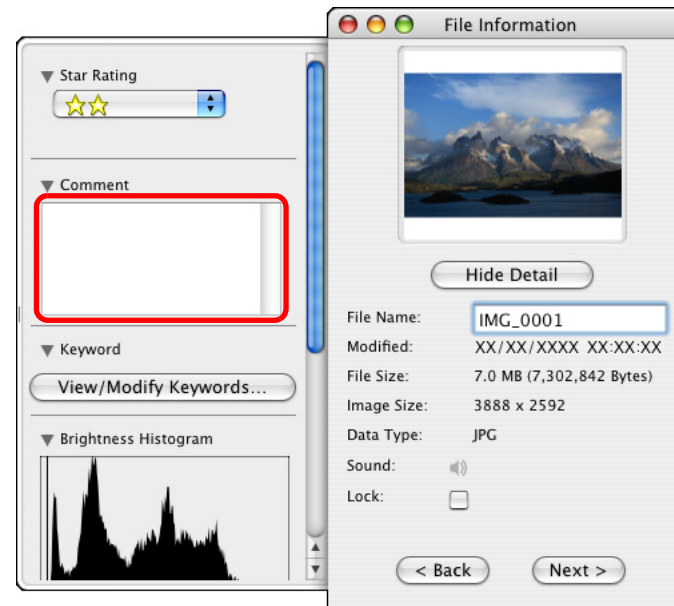


→ The keyword is set in the image.

## Entering Comments into Images

You can enter information relating to images as comments. The entered comments are also useful when searching for images (p.46).

- 1 Display the [File Information] window (p.41).
- 2 Click the [Advanced View] button.  
→ A field for entering comments is displayed.
- 3 Enter text and then press the < return > key on the keyboard.



→ The entered text is saved in the image.

Introduction

Table of Contents

Basic Operation

Advanced Operation

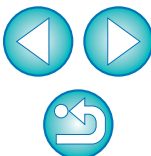
High-Level Functions

Preferences

Reference

Contents Lookup

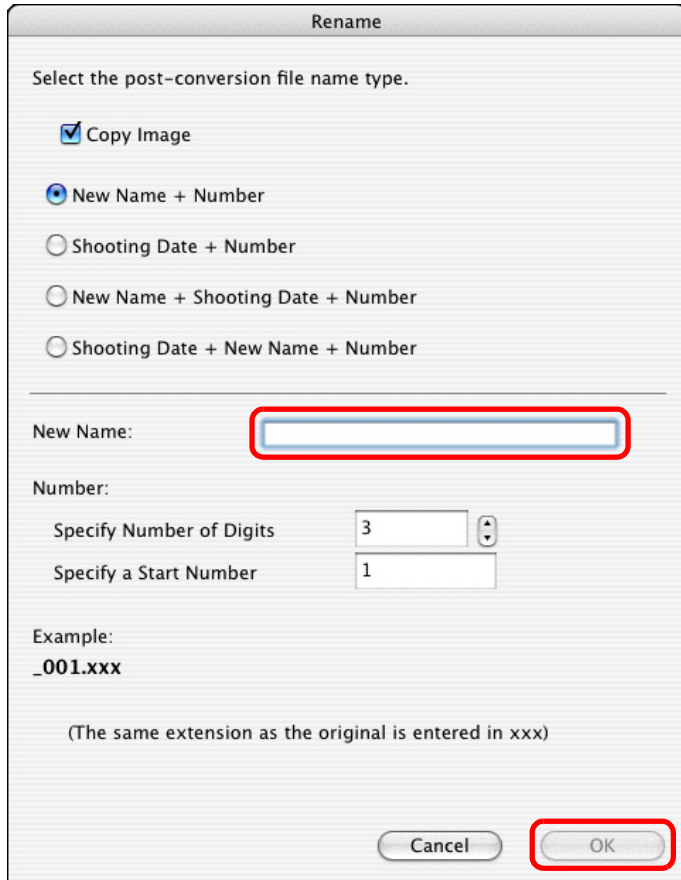
Index



## Saving Multiple Images with New File Names

You can copy multiple images and save them with new file names in a single operation.

- 1 Select all the images you want to save with new file names (p.10).
- 2 Select the [File] menu ► [Organize Image] ► [Rename].  
→ The [Rename] window appears.
- 3 Enter the file name and click the [OK] button.

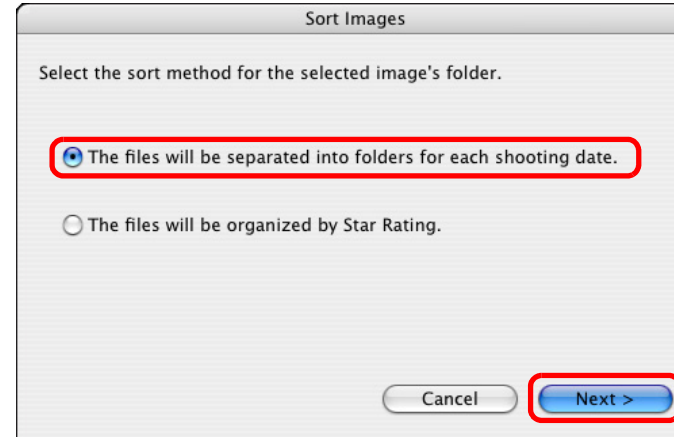


→ Images separate from the original images are saved with the new names.

## Classifying Images by Shot Date

Multiple images can be classified into different folders according to shot date.

- 1 Select all the images to be classified (p.10).
- 2 Select the [File] menu ► [Organize Image] ► [Sort Images].  
→ The [Sort Images] window appears.
- 3 Select [The files will be separated into folders for each shooting date.] and then click the [Next] button.



→ The [Organize by Shooting Date] window appears.

Introduction

Table of Contents

Basic Operation

Advanced Operation

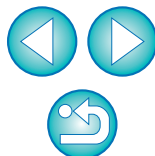
High-Level Functions

Preferences

Reference

Contents Lookup

Index



## 4 Specify the folder structure, the file names, and the save destination, and then click the [OK] button.



→ Images are classified by shot date.

### Settings for Folder Structure

Setting Item	Description
YearMonthDate	Classifies images by creating a first-level folder according to shot year/month/date.
Year/YearMonthDate	Classifies images by creating a second-level folder for the shot year, and the month and date.
Year/Month/YearMonthDate	Classifies images by creating a third-level folder for the shot year, the month, and the date.
Year/ newName	Classifies images by creating a new folder with a new name inside the shot year folders.
newName/YearMonthDate	Classifies images by creating folders for shot year/month/date inside a folder with a new name.
YearMonthDate/ newName	Classifies images by creating a new folder with a new name inside the shot year/month/date folders.

Introduction

Table of Contents

Basic Operation

Advanced Operation

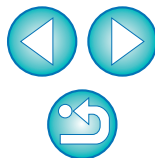
High-Level Functions

4 Preferences

Reference

Contents Lookup

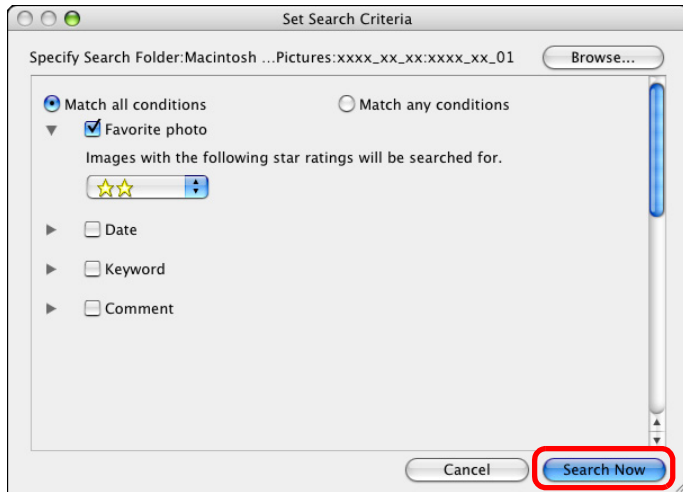
Index



# Searching for Images

You can search for images by ratings (p.17), shot date, comments (p.43) and keywords (p.43).

- 1 **Select the [File] menu ► [Search].**  
→ The [Set Search Criteria] window appears.
- 2 **Specify the search criteria and then click the [Search Now] button.**



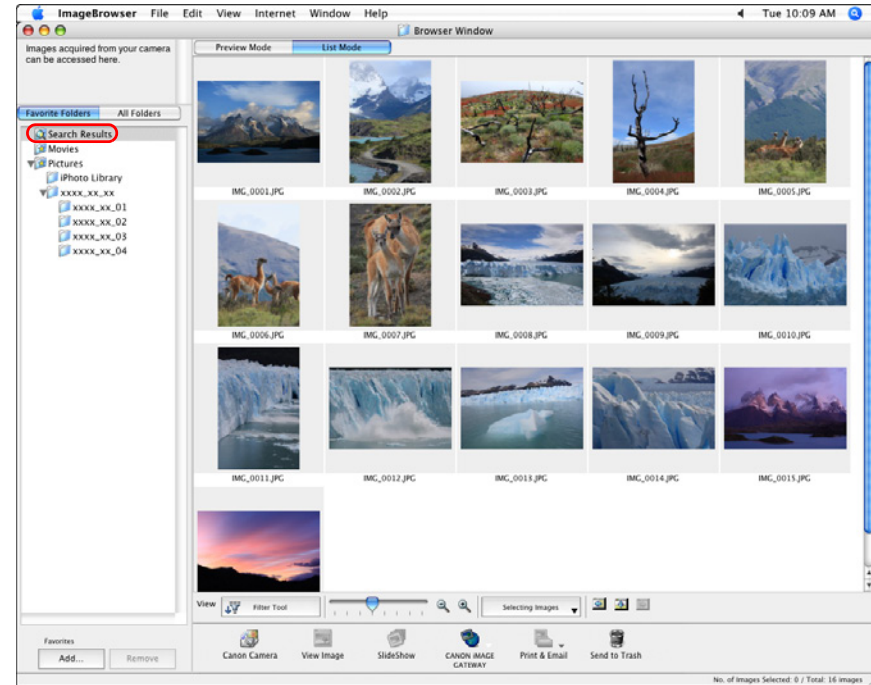
→ The search begins and the images that match the criteria are displayed in the [Search Results] window.

- 3 **Click the [Finish] button to close the [Search Results] window.**

→ The display returns to the main window.

## 4 Check the searched images in the main window.

- The searched images are displayed in the main window. Also, the [Search Results] folder is displayed in the folder area, and by selecting this folder, you can display the searched images at any time.



- The images inside the [Search Results] folder are stored until you either perform another search or quit IB.
- Any work you do on images inside the [Search Results] folder will be applied to all the original images. Therefore, please be aware that if you edit or delete images inside the [Search Results] folders, the original images will be edited or deleted also.

Introduction

Table of Contents

Basic Operation

Advanced Operation

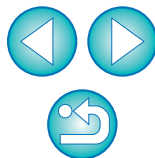
High-Level Functions

Preferences

Reference

Contents Lookup

Index



# Performing Advanced Editing

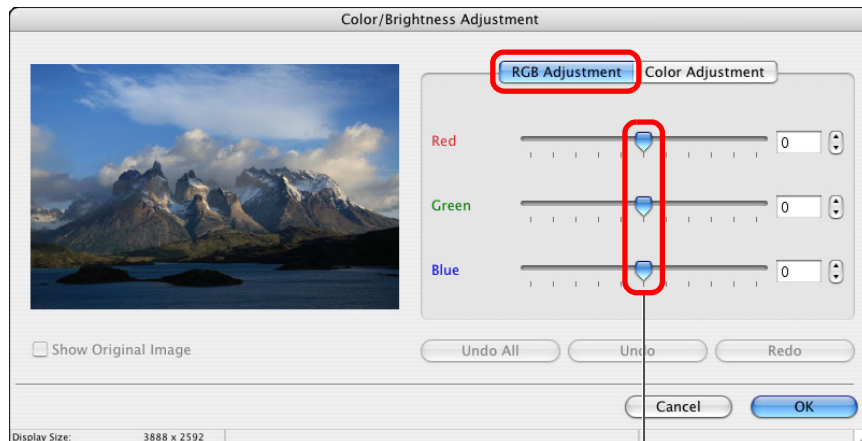
This section explains image editing using high-level functions based on the assumption that you are familiar with handling standard image editing software.

JPEG images deteriorate slightly when edited and saved, and the image before editing cannot be recovered. For this reason, an edited JPEG image should be saved as a separate image from the original image.

## Adjusting the Color of an Image in RGB

You can adjust the color of an image in RGB (red, green, blue).

- 1 Display the image to edit in the viewer window (p.16).
- 2 Click [Edit] and then select [Color/Brightness Adjustment] in the menu that appears (p.25).  
→ The [Color/Brightness Adjustment] window appears.
- 3 Select the [RGB Adjustment] tab sheet and adjust the image.



Drag to the left or right to adjust

→ The image is adjusted.

- 4 Check the adjustments and then click the [OK] button.
- 5 Save the image as a separate image (p.26).

Introduction

Table of Contents

Basic Operation

Advanced Operation

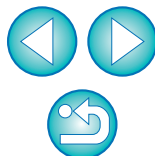
High-Level Functions

Preferences

Reference

Contents Lookup

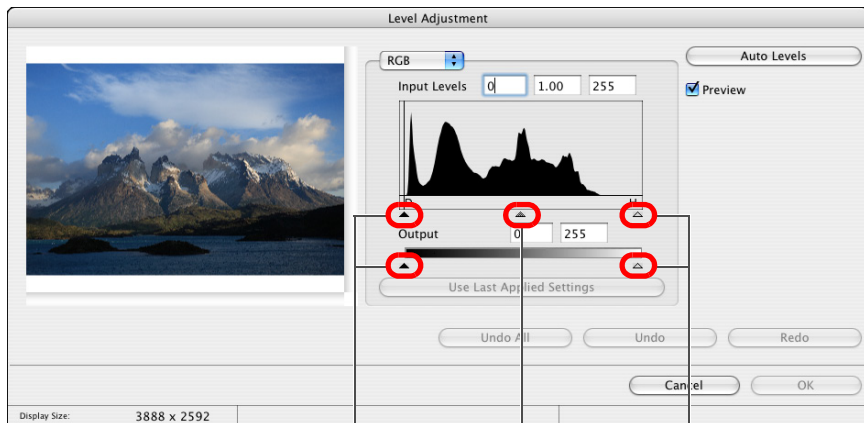
Index



## Adjusting the Brightness Level

You can adjust the level of brightness (balance).

- 1 Display the image to edit in the viewer window (p.16).
- 2 Click [Edit] and then select [Level Adjustment] in the menu that appears (p.25).  
→ The [Level Adjustment] window appears.
- 3 Adjust the image.



Drag right to adjust

Drag left to adjust

Drag to the left or right to adjust

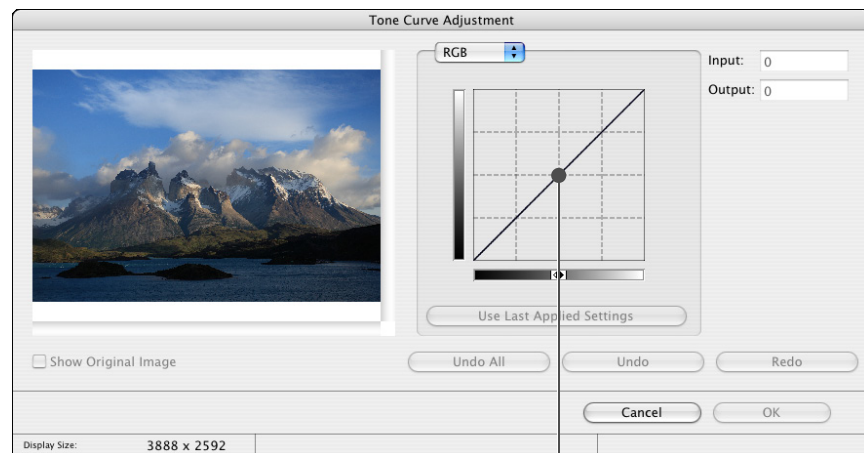
→ The image is adjusted.

- 4 Check the adjustments and then click the [OK] button.
- 5 Save as a separate image (p.26).

## Adjusting the Tone Curve

You can adjust the brightness, contrast and color of a specific area by changing the tone curve.

- 1 Display the image to edit in the viewer window (p.16).
- 2 Click [Edit] and then select [Tone Curve Adjustment] in the menu that appears (p.25).  
→ The [Tone Curve Adjustment] window appears.
- 3 Adjust the image.



Click to add a [■] (point)  
Adjust by dragging [■]

- The image is adjusted.
- The horizontal axis shows the input level and the vertical axis shows the output level.
  - The maximum number of [■] is 10.
  - To delete a [■], press the < delete > key on the keyboard.



**4** Check the adjustments and then click the [OK] button.

**5** Save as a separate image (p.26).

## Transferring Images to Other Image Editing Software

You can transfer images to image editing software other than IB.

- 1** In the main window, select the [ImageBrowser] menu ► [Preferences].  
→ The [Preferences] window appears.
- 2** From the menu, select [Register Application] and then click the [Add] button.  
→ The [Application Selection] window appears.
- 3** Select the image editing software to transfer to, and then click the [Open] button  
→ The selected software is registered.
- 4** Click the [OK] button and then close the [Preferences] window.
- 5** Select the image you want to transfer to the image editing software.
- 6** Select the [Edit] menu ► [Edit with Registered Application] ► image editing software to transfer to.  
→ The selected image editing software starts up and then image is displayed.

Introduction

Table of Contents

Basic Operation

Advanced Operation

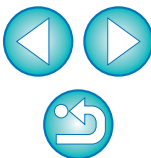
High-Level Functions

Preferences

Reference

Contents Lookup

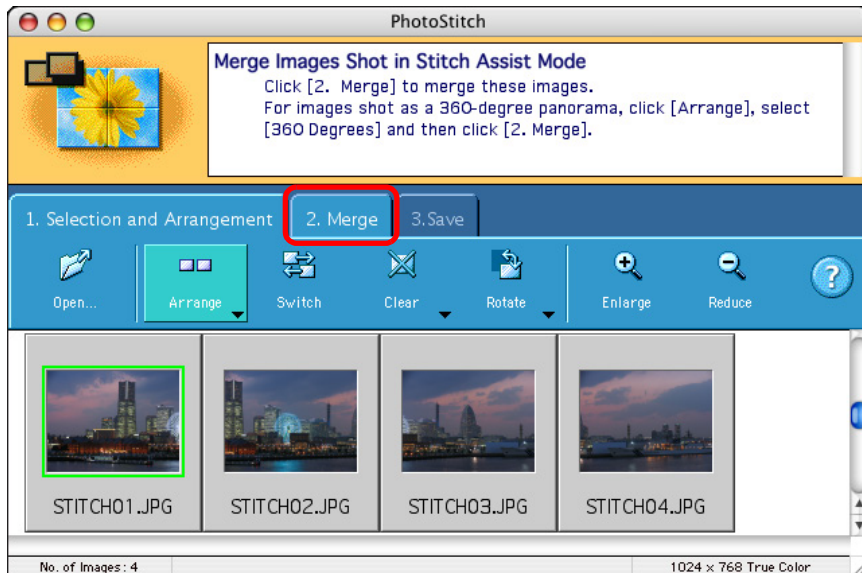
Index



## Merging Images to Create Panorama Images

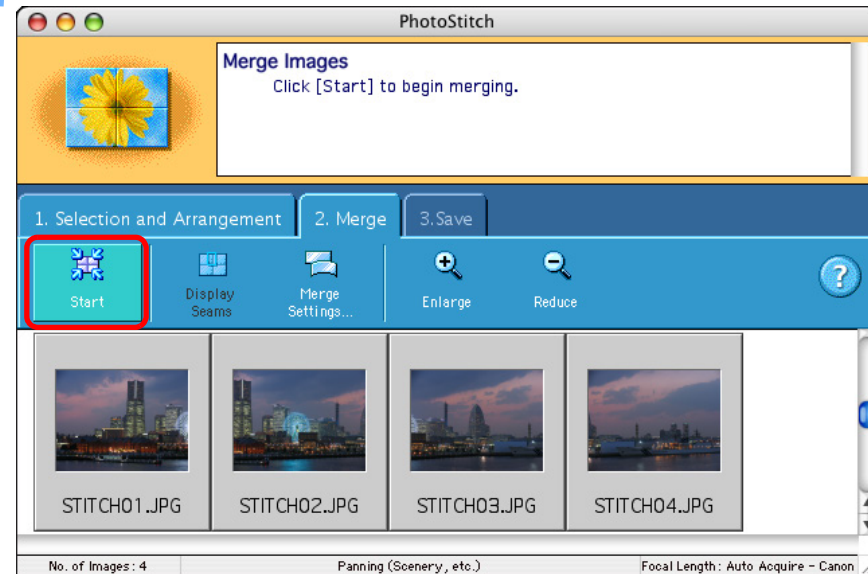
You can merge up to four JPEG images to create panorama images. For merging images, start up the image-merging software “PhotoStitch” from IB and use.

- 1 Select multiple images to merge (p.10).
- 2 Select the [Edit] menu ► [PhotoStitch].  
→ PhotoStitch starts up and the main window appears.
- 3 Check the arrangement of the images to be merged and click the [2. Merge] tab sheet.
  - If the arrangement of the images to be merged is not correct, drag the images to rearrange them.



→ The window switches to the [2. Merge] tab sheet.

- 4 Click [Start] to merge.



→ The images are merged and displayed.

- 5 Click the [3. Save] tab sheet.  
→ The display switches to the [3. Save] tab sheet.

Introduction

Table of Contents

Basic Operation

Advanced Operation

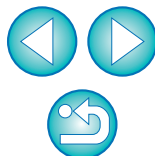
High-Level Functions

4 Preferences

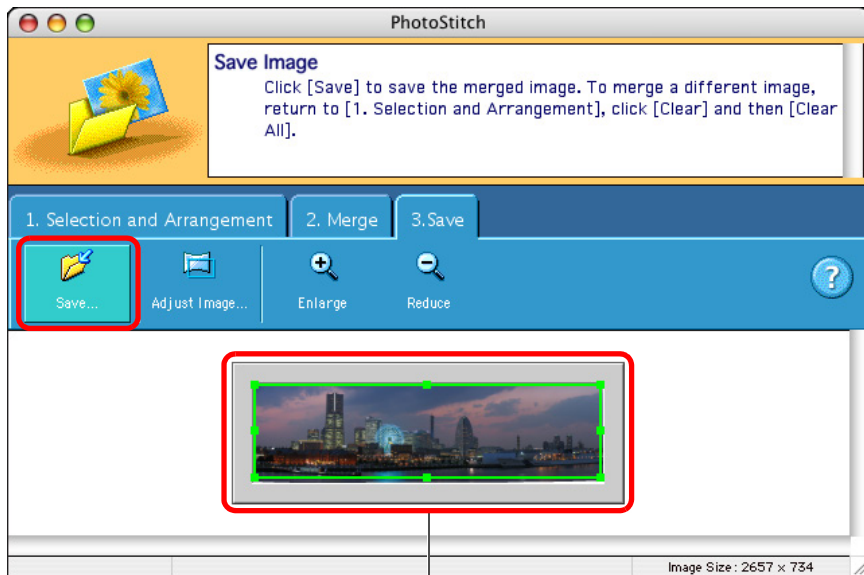
Reference

Contents Lookup

Index



## 6 Check the save range and then click [Save].



**Save range**  
Drag [ ■ ] to change the range

→ The [Save As] dialog box appears.

## 7 Specify the save destination and then click the [Save] button.

→ The merged images are saved.

## 8 Select the [PhotoStitch] menu ► [Quit PhotoStitch].

→ PhotoStitch quits.

See also the Help that are displayed when you click [ ? ] on the right of the window for information on operating PhotoStitch and PhotoStitch functions.

# Adjusting RAW Images

You can make the same adjustments (reset processing conditions) to RAW images as the functions that are available on the camera, such as brightness and white balance adjustment. You can also convert edited RAW images to JPEG or TIFF images and save them.

Because only the image processing conditions are changed when a RAW image is adjusted, the original image data remains totally unaffected. For this reason, image deterioration that usually accompanies editing does not occur and you can readjust, redo or undo changes knowing that you can always revert to the original shot condition of the image.

## 1 Select a RAW image.

## 2 Select the [File] menu ► [Processing RAW Images].

→ RAW Image Task starts up and the main window appears.

## 3 Adjust the image.

### RAW Image Task main window



→ The image is adjusted.

→ For the adjustment items in the RAW Image Task main window, refer to [p.70](#).

● Adjustment items displayed in [Image Quality Adjustment] vary depending on the camera model used for shooting the RAW image.

Introduction

Table of Contents

Basic Operation

Advanced Operation

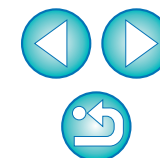
High-Level Functions

Preferences

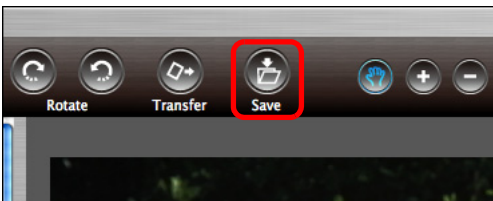
Reference

Contents Lookup

Index

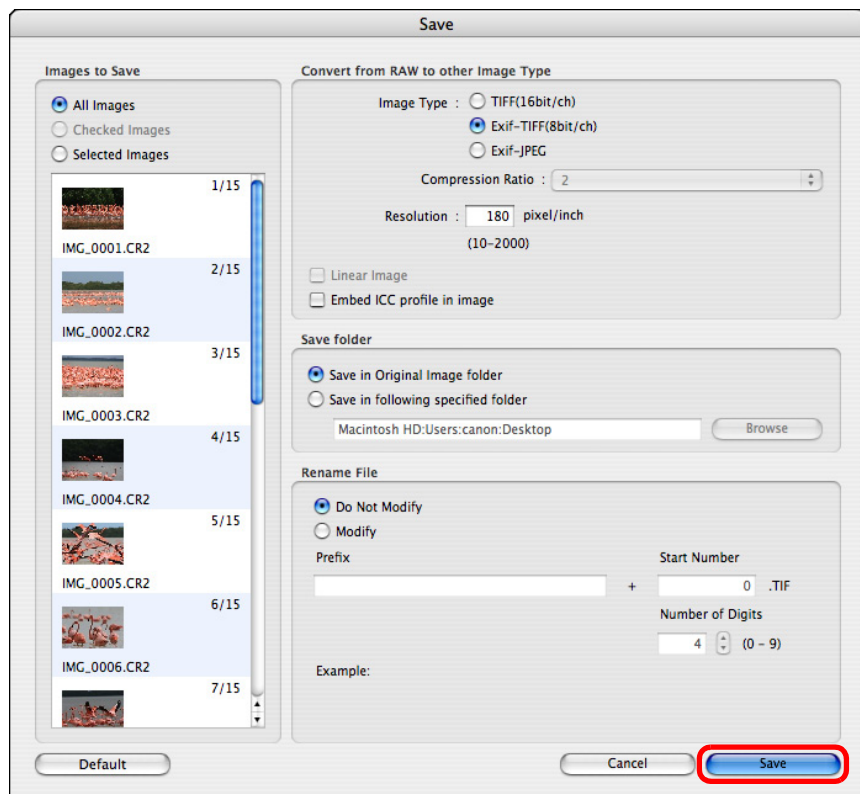


#### 4 Click the [Save] button.



→ The [Save] dialog box appears.

#### 5 Specify the type for the image to be saved and the save destination, and then click the [Save] button.



→ The processing dialog box appears and the JPEG image or TIFF image that has been converted from a RAW image is saved in the specified place. The RAW image remains unaffected.

#### 6 Select the [RAW Image Task] menu ► [Quit RAW Image Task].

→ RAW Image Task quits.

Introduction

Table of Contents

Basic Operation

Advanced Operation

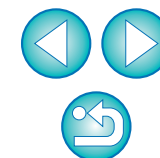
High-Level Functions

Preferences

Reference

Contents Lookup

Index



## ? Applying multiple adjustment settings to an image at one time

- 1 Remove the check mark from [Preview].
- 2 Set multiple adjustment items.
- 3 Click the [Update] button.  
→ All the adjustments are saved to the image and redisplayed in one operation.

## 💡 Applying adjustment settings to another image

You can apply the settings that have been adjusted in [Image Quality Adjustment] to another image by selecting the [Edit] menu ► [Development Conditions] ► [Copy] or [Paste] in the RAW Image Task main window (p.70). You can also select [Save] or [Load] to save or download the settings as a separate file from the image (extension “.DVP”).

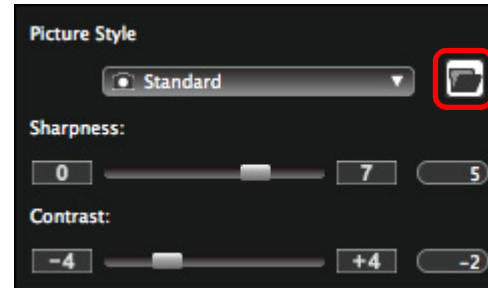
- It takes approximately 2 to 4 seconds until the adjusted image is redisplayed (undergone development processing) (when using the following: OS: Mac OS X 10.4; CPU: 1.6 GHz PowerPC G5; RAM: 512MB). However, the time it takes to redisplay an image varies greatly depending on the camera model used to shoot the image, computer type and the subject of the image.
- A Picture Style file is an extended function of Picture Style. It is a file that offers effective image characteristics for an image shot in an extremely limited scene. For more details on Picture Style files, refer to the Canon’s web site.

## Applying Picture Style Files

You can apply Picture Style files downloaded from Canon’s web site and saved to your computer, as well as Picture Style files created with Picture Style Editor and saved to your computer, to RAW images.

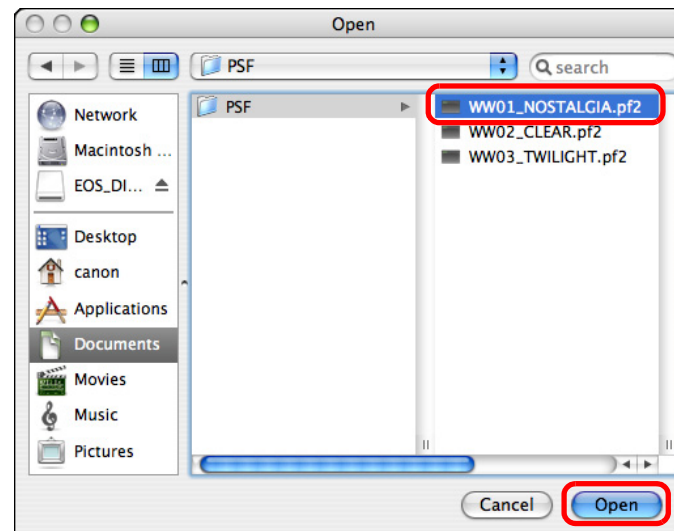
### 1 Display the main window of RAW Image Task (p.51).

### 2 Click [📁].



→ The [Open] window appears.

### 3 Select a Picture Style file, and then click the [Open] button.



→ The Picture Style file is loaded and applied to the image.

Introduction

Table of Contents

Basic Operation

Advanced Operation

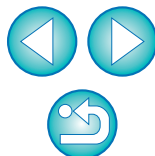
High-Level Functions

Preferences

Reference

Contents Lookup

Index





- A Picture Style file is an extended function of Picture Style. For more details on Picture Style files, refer to the Canon's web site.
- The Picture Style files that you can apply to the camera are files with the ".PF2" extension only.
- Only one Picture Style file can be loaded for one RAW image. To apply another Picture Style file, repeat steps 2 to 3.
- For details on using Picture Style Editor, refer to the "Picture Style Editor Instruction Manual" (PDF electronic manual).



## White Balance Files and Tone Curve Files

White balance (EOS-1D series cameras and EOS 40D) and tone curve (EOS-1D series cameras excluding EOS-1Ds Mark III and EOS-1D Mark III) adjustments made to RAW images can be saved as a file as explained below and then registered to a camera and used.

For information on registering cameras, see the two related pages below in "Chapter 2: Setting the Camera from Your Computer" in the "EOS Utility Instruction Manual" (PDF electronic manual).

- For details on white balance files, refer to "Registering Personal White Balance in the Camera".
- For details on tone curve files, refer to "Setting Parameters and Applying to the Camera".

### Saving White Balance Files

- 1 Adjust white balance in [Image Quality Adjustment].**
- 2 Click [  ] to save as a white balance file.**
  - Click [  ] to save the adjusted white balance results as a white balance file (extension ".WBD").
- 3 Use EOS Utility to register the saved file to the camera.**

Introduction

Table of Contents

Basic Operation

Advanced Operation

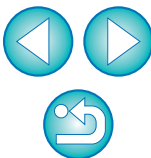
High-Level Functions

Preferences




Reference

Contents Lookup

Index



## Saving Tone Curve Files (Excludes the EOS-1Ds Mark III and EOS-1D Mark III)

- 1 Click  in [Image Quality Adjustment] and adjust the tone curve.
- 2 Click  to save as a tone curve file.
  - Click  in the [Tone curve] dialog box to save the adjusted tone curve as a tone curve file (extension “.TCD”).
- 3 Use EOS Utility to register the saved file to the camera.



- White balance files are not compatible with other camera models.
- Tone curve files for the EOS-1Ds Mark II and the EOS-1D Mark II are compatible and tone curve files for the EOS-1Ds and the EOS-1D are compatible.
- White balance files and tone curve files are compatible with Windows and Macintosh computers.



## Adding Sound to Images/Playing Back

You can add sound to images and play back sound which you have added to images with a camera that has a sound record function.

### Adding Sound to Images


You can add a sound file to an image.

A Mac OS X function is used for sound recording. When inputting sound from external equipment, connect the external equipment to your computer beforehand.

- 1 Select an image to which you want to add sound.
- 2 Select the [File] menu ► [Sound] ► [Record].
  - The audio recording dialog box appears.
- 3 Click  (recording button) and begin recording the sound to be added to the image. Click the [Save] button to stop recording.
  - The recorded sound file is added to the image. The  icon is displayed in the image to which the sound file was added.

### Playing Back Sound

You can play back sound files that are attached to images.

- 1 Select an image to which a  icon is attached.
- 2 Select the [File] menu ► [Sound] ► [Play].
  - The sound is played back.

Introduction

Table of Contents

Basic Operation

Advanced Operation

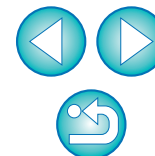
High-Level Functions

Preferences

Reference

Contents Lookup

Index



# 4 Preferences



Preferences .....	57
Browser Window Settings.....	57
Viewer Window Settings.....	58
Confirmation Dialog Box Settings.....	58
Processing When Rotating Settings.....	59
Layout Print Settings .....	59
Photo Print Settings.....	59
Register Application Settings.....	59

Introduction

Table of Contents

Basic Operation

Advanced Operation

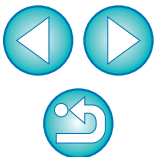
High-Level Functions

**4**  
Preferences

Reference

Contents Lookup

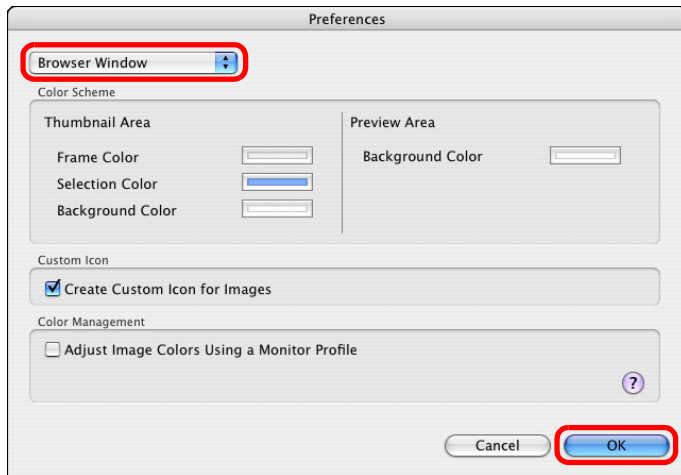
Index



# Preferences

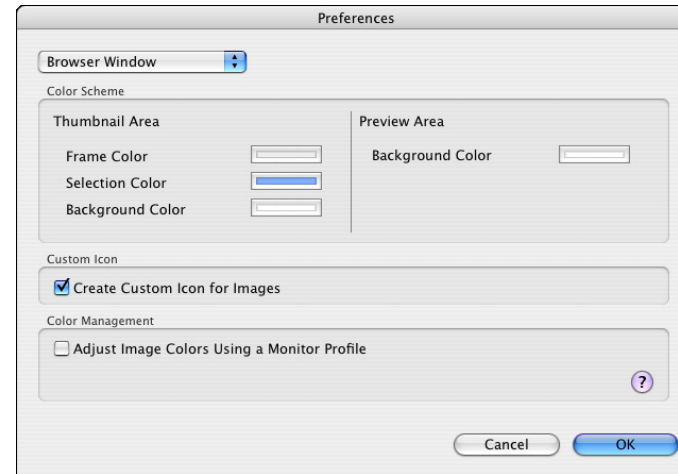
You can change any of the IB functions in the preferences window. Check the settings displayed for each window before making changes.

- 1 Select the [ImageBrowser] menu ► [Preferences].
- 2 From the menu, select the dialog box you want to display, specify your settings, and then click the [OK] button.



## Browser Window Settings

You can change the background color of the main window (browser window) as well as the color of the thumbnail image frames. You can also make settings for color management.



Introduction

Table of Contents

Basic Operation

Advanced Operation

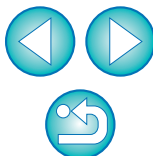
High-Level Functions

Preferences

Reference

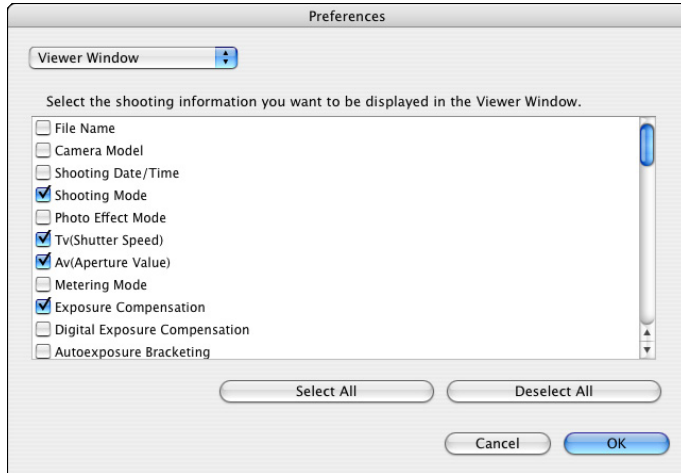
Contents Lookup

Index



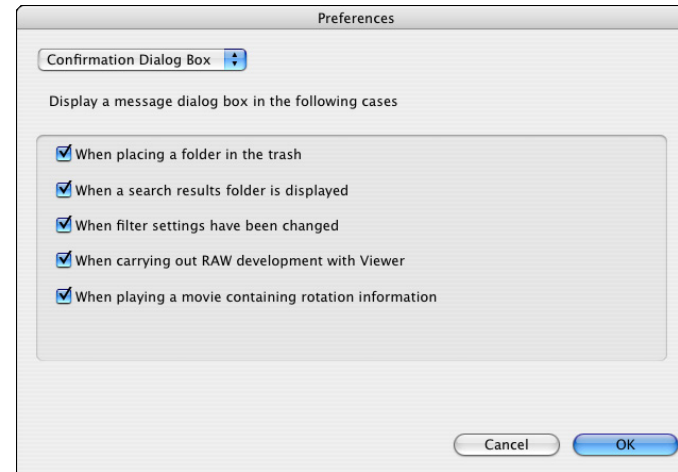
## Viewer Window Settings

You can set the shooting information displayed in the viewer window (p.66).



## Confirmation Dialog Box Settings

You can set the software so that confirmation dialog boxes displayed after each operation are not displayed. The items you uncheck are not displayed.



### ? To display the shooting information in the viewer window

In the viewer window, click the [Show Shooting Information] button (p.66) and in the menu that appears, select [Show Shooting Information] to display the shooting information.

Introduction

Table of Contents

Basic Operation

Advanced Operation

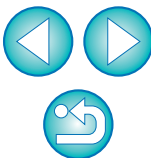
High-Level Functions

Preferences

Reference

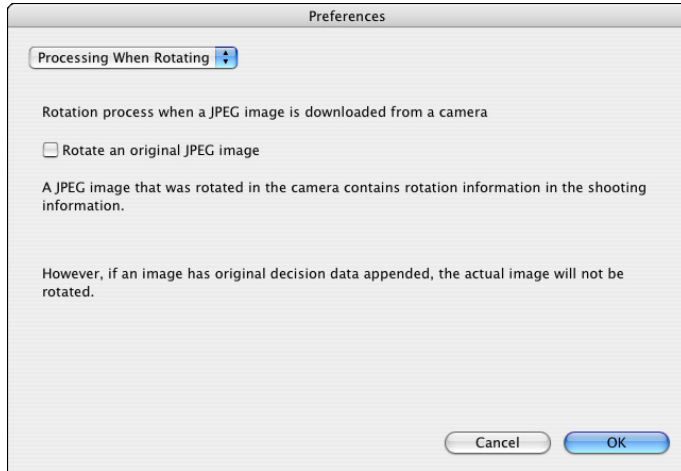
Contents Lookup

Index



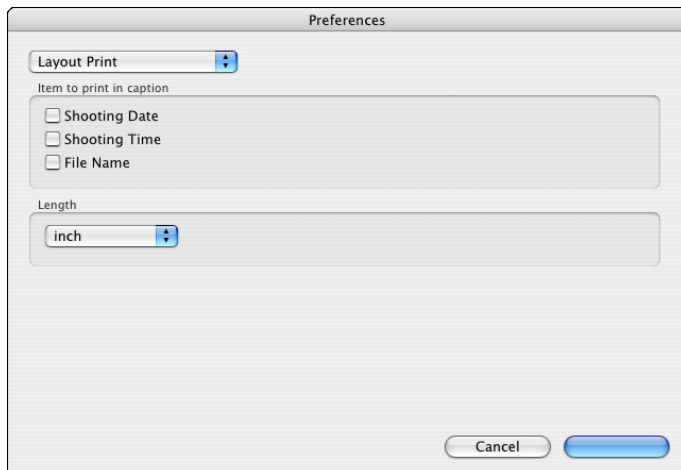
## Processing When Rotating Settings

You can make settings related to image rotation.



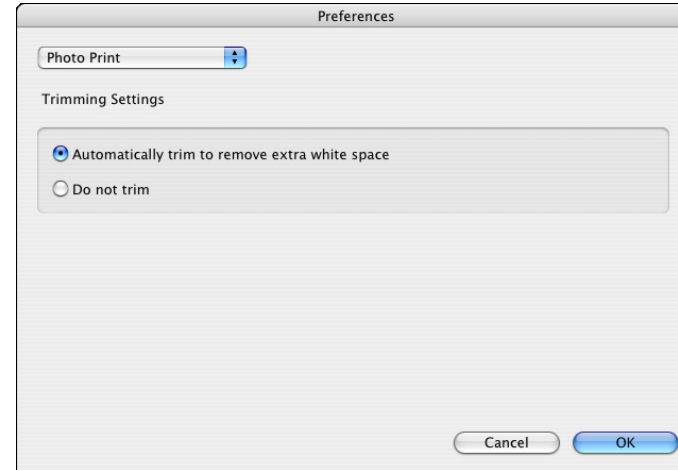
## Layout Print Settings

You can make settings for layout printing.



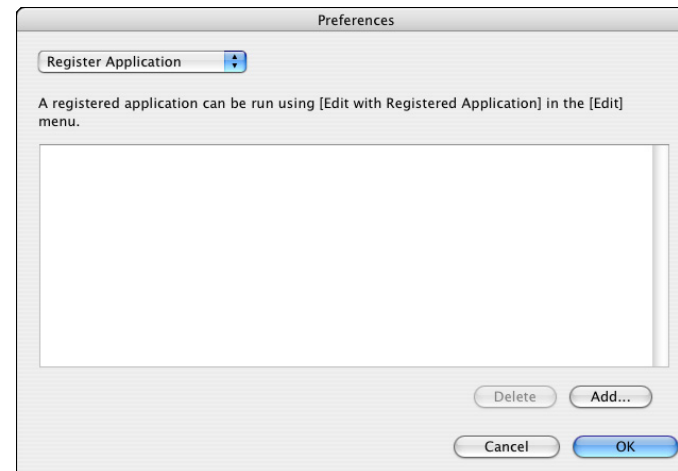
## Photo Print Settings

When printing with the [Photo Print] window (p.13), you can set whether to trim the image and print with no borders around the paper, or to print as is without trimming.



## Register Application Settings

You can register other editing software.



Introduction

Table of Contents

Basic Operation

Advanced Operation

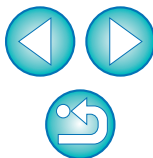
High-Level Functions

Preferences

Reference

Contents Lookup

Index





Troubleshooting .....	61
Deleting the Software (Uninstalling) .....	62
System Requirements .....	63
Supported Images .....	63
List of Main Window Functions .....	64
Preview Mode .....	64
List Mode .....	65
List of Viewer Window Functions .....	66
List of Photo Print Window Functions .....	67
List of Index Print Window Functions .....	68
List of Layout Print Window Functions .....	69
List of RAW Image Task Main Window Functions...	70
Contents Lookup .....	71
Index .....	72
About This Instruction Manual .....	74
Trademark Acknowledgments .....	74

Introduction

Table of Contents

Basic Operation

Advanced Operation

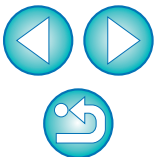
High-Level Functions

Preferences

Reference

Contents Lookup

Index



# Troubleshooting

If IB is not operating correctly, refer to the items below.

Also refer to the Help from the [Help] menu or click the [?] button at the top of each window and refer to the Help displayed.

## Installation could not be completed correctly

- You cannot install software unless you are logged into an account with Administrator privileges. Log in again into an account with Administrator privileges.  
For how to log in and how to specify Administrator settings, refer to the User's Manual for the Macintosh computer or for Mac OS X.

## IB does not work

- IB does not operate correctly on a computer if its system requirements does not meet. Use IB on a computer with compatible system requirements (p.63).
- Even if your computer has the RAM capacity (memory) described in the system requirements (p.63), if other applications are running at the same time as IB, you may not have sufficient RAM (memory). Quit any applications other than IB.
- The software preferences file may be corrupted. Quit all applications and follow the procedure below to delete the preferences file from the [Preferences] folder before restarting IB.  
In the hard disk drive where the system is saved, open the [Users] folder ► folder of the logged in user ► [Library] folder ► [Preferences] folder, and delete the preferences files below.

Preferences	Description
com.canon.ImageBrowser.plist	Preferences file for the ImageBrowser
com.canon.RAWImageTask.plist	Preferences file for the RAW Image Task
com.canon.PhotoStitch.plist	Preferences file for the PhotoStitch

## Images do not display properly

- Images that are not supported by IB (p.63) do not display. There are various types of JPEG and TIFF images, so JPEG images other than Exif 2.2 and 2.21 compatible images and TIFF images other than Exif compatible images may not display properly.
- With initial settings, the color of images that have been shot in Adobe RGB appear weak. In this case, check the [Browser Window] window in preferences and checkmark [Adjust Image Colors Using a Monitor Profile] (p.57). Color management is performed and the color of the image shot with an Adobe RGB setting and the image shot with an sRGB setting are matched.

Introduction

Table of Contents

Basic Operation

Advanced Operation

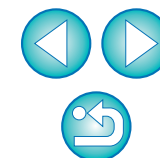
High-Level Functions

Preferences

Reference

Contents Lookup

Index



# Deleting the Software (Uninstalling)

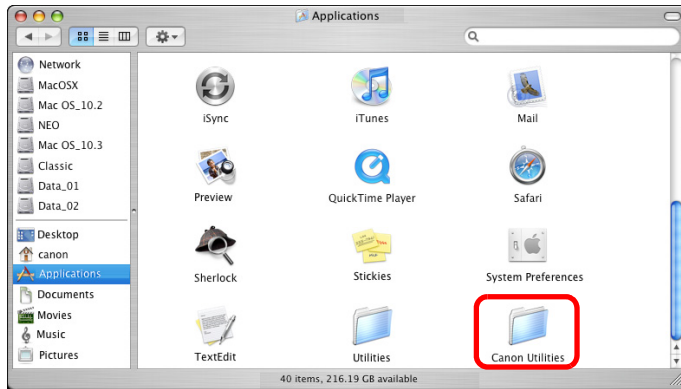
- Quit any applications before uninstalling the software.
- To uninstall the software, log into the account used when installation was performed.
- To prevent computer malfunctions, always restart your computer after you have uninstalled the software.



- You cannot retrieve data that you have emptied into the Trash and deleted, so be particularly careful when deleting data.
- You cannot install the software again if you have just moved the [ImageBrowser] folder to the trash. Be sure to select the [Finder] menu ► [Empty Trash].

## 1 Display the folder in which the software is saved.

→ Open the [Canon Utilities] folder.



## 2 Drag the [ImageBrowser] folder to the Trash.

## 3 Select the [Finder] menu on the desktop ► [Empty Trash].

→ The software is deleted.

## 4 Restart your computer.

Introduction

Table of Contents

Basic Operation

Advanced Operation

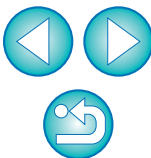
High-Level Functions

Preferences

Reference

Contents Lookup

Index



# System Requirements

<b>OS</b>	Mac OS X 10.3 to 10.5
<b>Computer</b>	Macintosh with one of the above OS installed
<b>CPU</b>	PowerPC G3, G4, G5 or Intel processor
<b>RAM</b>	Minimum 256MB
<b>Display</b>	Resolution : 1024 x 768 or more Colors : Thousands or more

- This software program is not compatible with UFS (UNIX File System) formatted disks.
- IB also runs comfortably on Intel-based Macintosh since it is a Universal application.

# Supported Images

Image type/Camera used		Extension
JPEG images	JPEG images shot with a Canon digital camera (Exif 2.2 or 2.21-compatible JPEG images)	.JPG, .JPEG
RAW images	EOS-1Ds Mark III    EOS-1D Mark III EOS-1D Mark II N    EOS-1Ds Mark II EOS-1D Mark II    EOS 5D EOS 40D    EOS 30D EOS 20D/20Da EOS DIGITAL REBEL XSi/450D EOS DIGITAL REBEL XTi/400D DIGITAL EOS DIGITAL REBEL XT/350D DIGITAL EOS 1000D	.CR2
	EOS-1Ds    EOS-1D	.TIF
	EOS 10D EOS DIGITAL REBEL/300D DIGITAL EOS D60    EOS D30	.CRW
TIFF images	Exif-compatible TIFF images	.TIF, .TIFF
BMP images	Bitmap images	.BMP
PICT images	PICT images	.PICT

Introduction

Table of Contents

Basic Operation

Advanced Operation

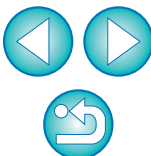
High-Level Functions

Preferences

Reference

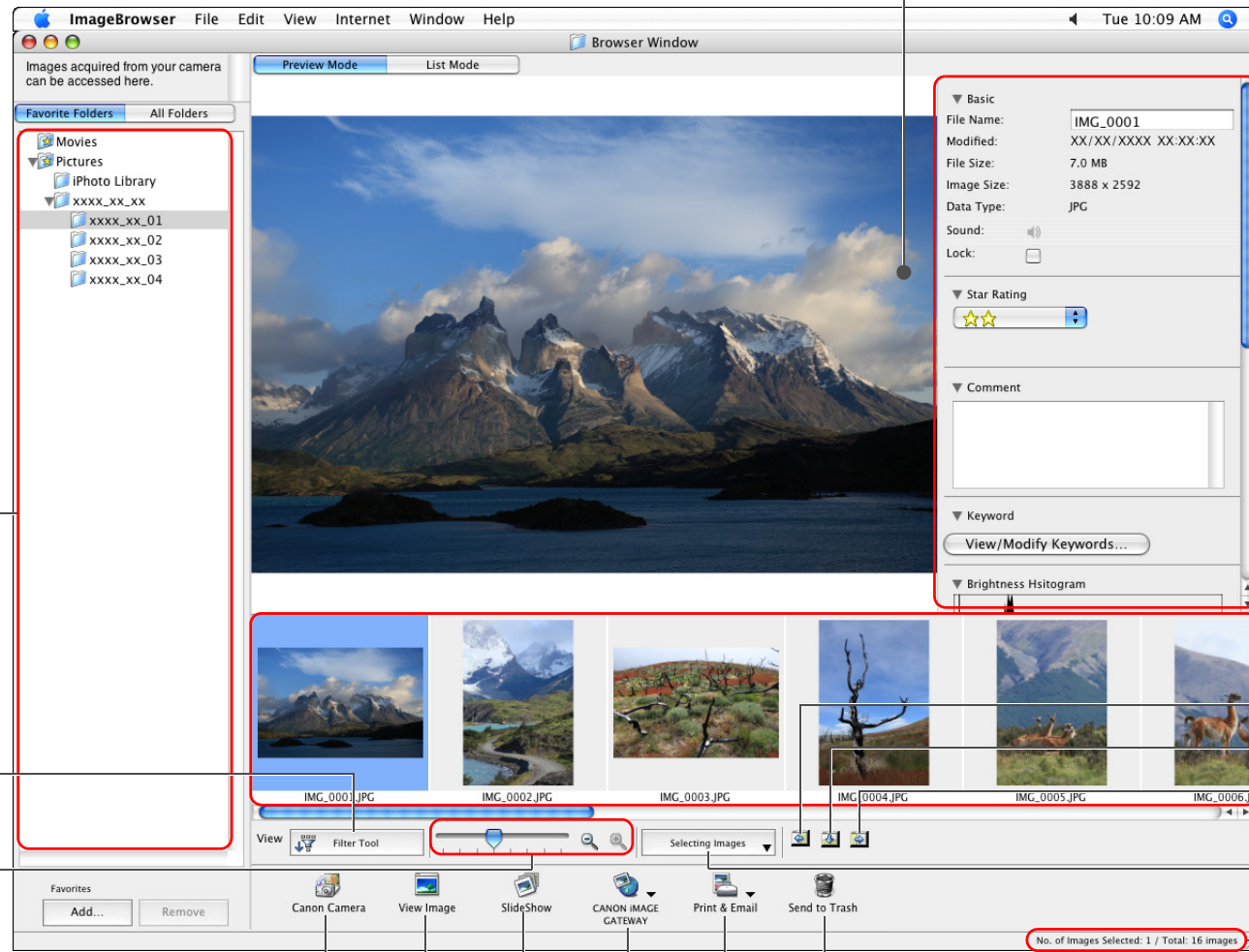
Contents Lookup

Index



# List of Main Window Functions

## Preview Mode



Folder area\*1

Filter display  
(p.18)

Enlarges/  
reduces the  
thumbnail  
images (p.11)

Starts up EOS Utility/Displays  
Download images window  
(p.7, p.9)

Viewer window (p.66)

Slide show (p.32)

Connects to the CANON iIMAGE GATEWAY\*3

Prints images and creates images for e-mail (p.13, p.33, p.37, p.38)

Deletes images and folders (p.23)

No. of images Selected: 1 / Total: 16 images

Image display area

Information display area

Thumbnail image  
display area\*2

Shows/hides the folder area

Shows/hides the task buttons

Shows/hides the  
information display area

Selects/deselects all the  
images

Number of selected images/  
Total number of images

Introduction

Table of  
Contents

Basic  
Operation

Advanced  
Operation

High-Level  
Functions

Preferences

Reference

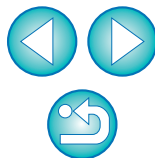
Contents  
Lookup

Index

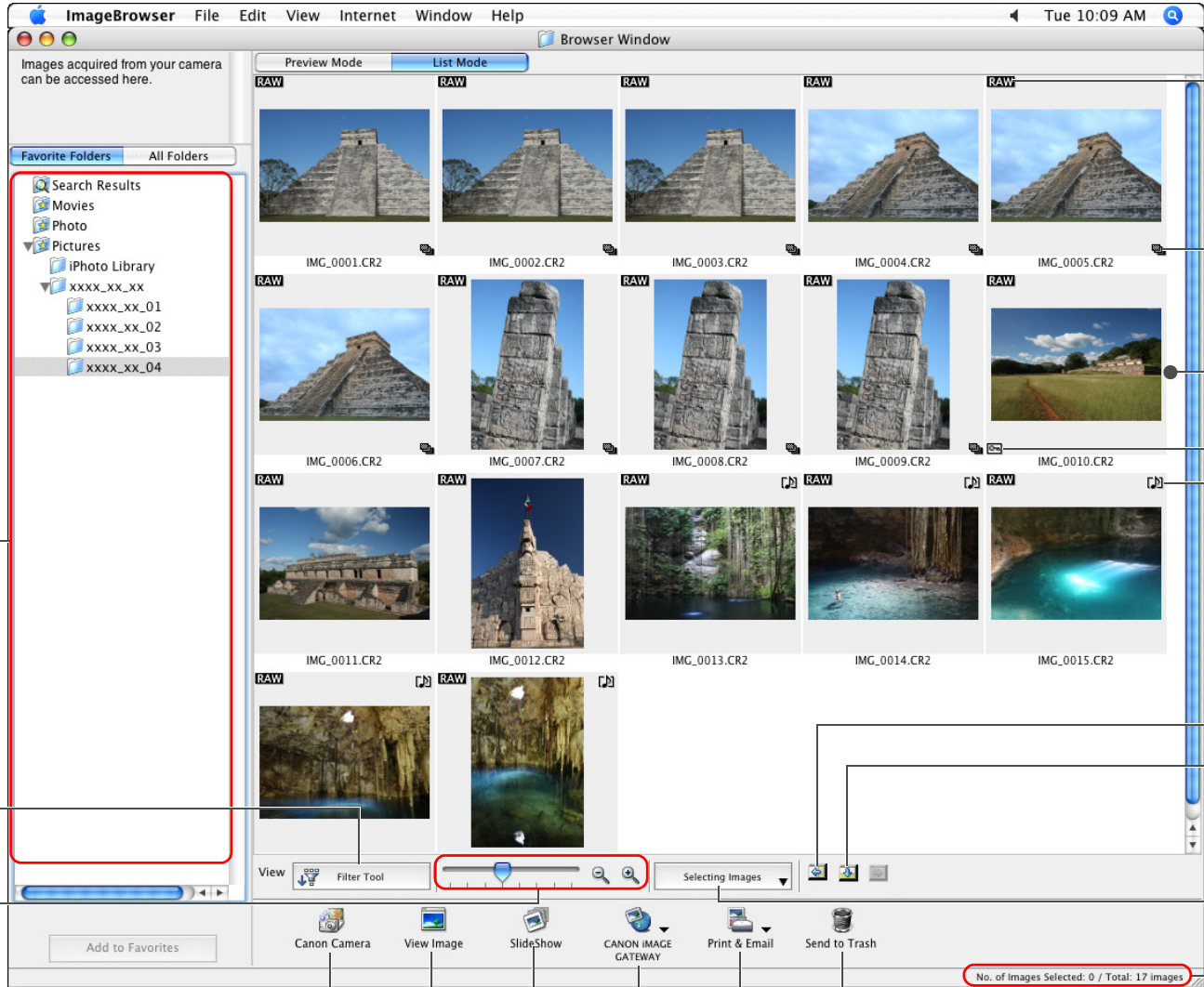
\*1 Images in folders selected here are displayed on the thumbnail image display area.

\*2 Images selected here are displayed on the image display area.

\*3 The [CANON iIMAGE GATEWAY] button may not be displayed depending on the area you are in.



# List Mode



Folder area\*1

Filter display (p.18)

Enlarges/reduces the thumbnail images (p.11)

Starts up EOS Utility/Displays Download images window (p.7, p.9)

Slide show (p.32)

Deletes images and folders (p.23)  
Prints images and creates images for e-mail (p.13, p.33, p.37, p.38)

Connects to the CANON iMAGE GATEWAY\*2

RAW image icon

Bracketing icon

Image display area

Protect icon

Audio recording icon

Shows/hides the folder area

Shows/hides the task buttons

Selects/deselects all the images

Number of selected images/ Total number of images

Introduction

Table of Contents

Basic Operation

Advanced Operation

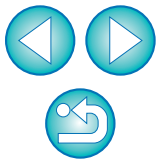
High-Level Functions

Preferences

Reference

Contents Lookup

Index



\*1 Images in folders selected here are displayed on the image display area.

\*2 The [CANON iMAGE GATEWAY] button may not be displayed depending on the area you are in.

# List of Viewer Window Functions

Introduction

Table of Contents

Basic Operation

Advanced Operation

High-Level Functions

Preferences

Reference

Contents Lookup

Index



Image display area

Rating (p.17)

Shows/hides the shooting information and AF point (p.12, p.16)

Display magnification (p.17)

Switches between images

Displayed image size

Saves the images (p.26)

Edits the images (p.25)

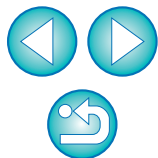
Split displays (p.40)

Synchronize (p.40)

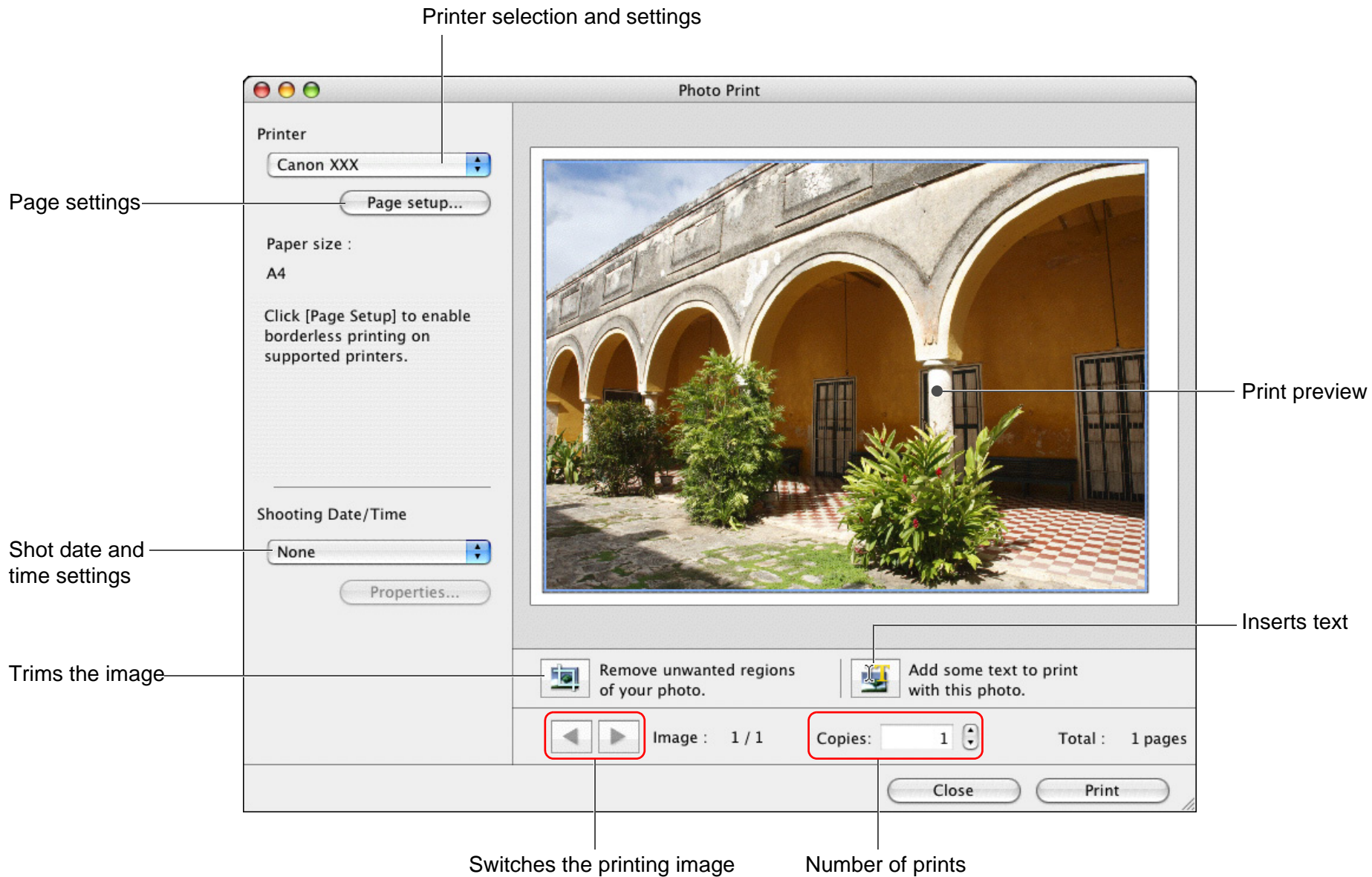
Photo print window (p.67)

Full view display (p.12)

Display magnification



# List of Photo Print Window Functions



Introduction

Table of Contents

Basic Operation

Advanced Operation

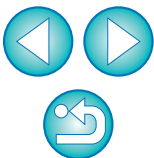
High-Level Functions

Preferences

Reference

Contents Lookup

Index



# List of Index Print Window Functions

Introduction

Table of Contents

Basic Operation

Advanced Operation

High-Level Functions

Preferences

Reference

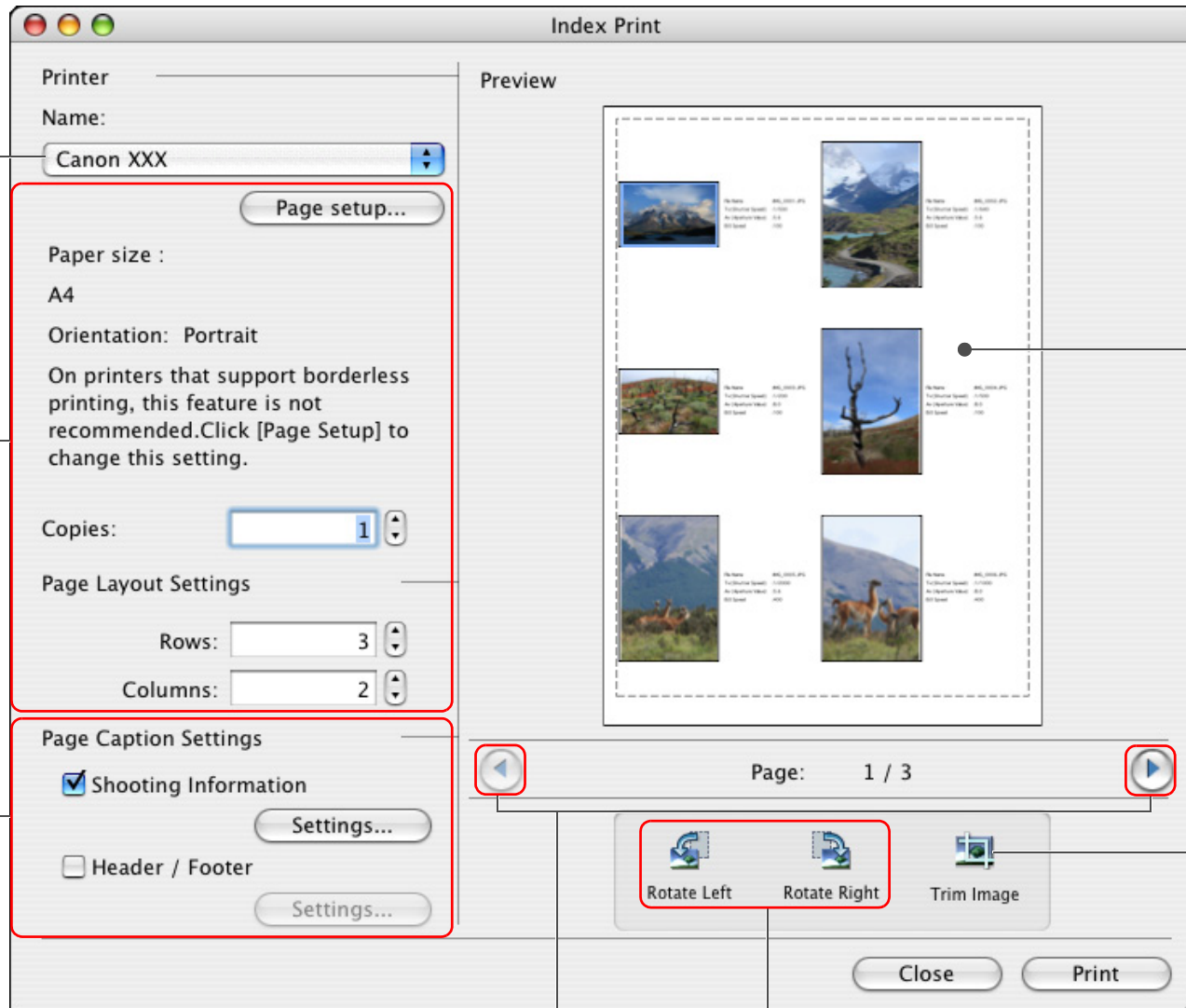
Contents Lookup

Index

Printer selection and settings

Page settings

Print information settings

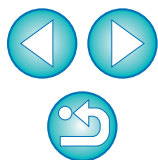


Print preview

Trims the image

Switches the printing page

Rotates the image



# List of Layout Print Window Functions

Introduction

Table of Contents

Basic Operation

Advanced Operation

High-Level Functions

Preferences

Reference

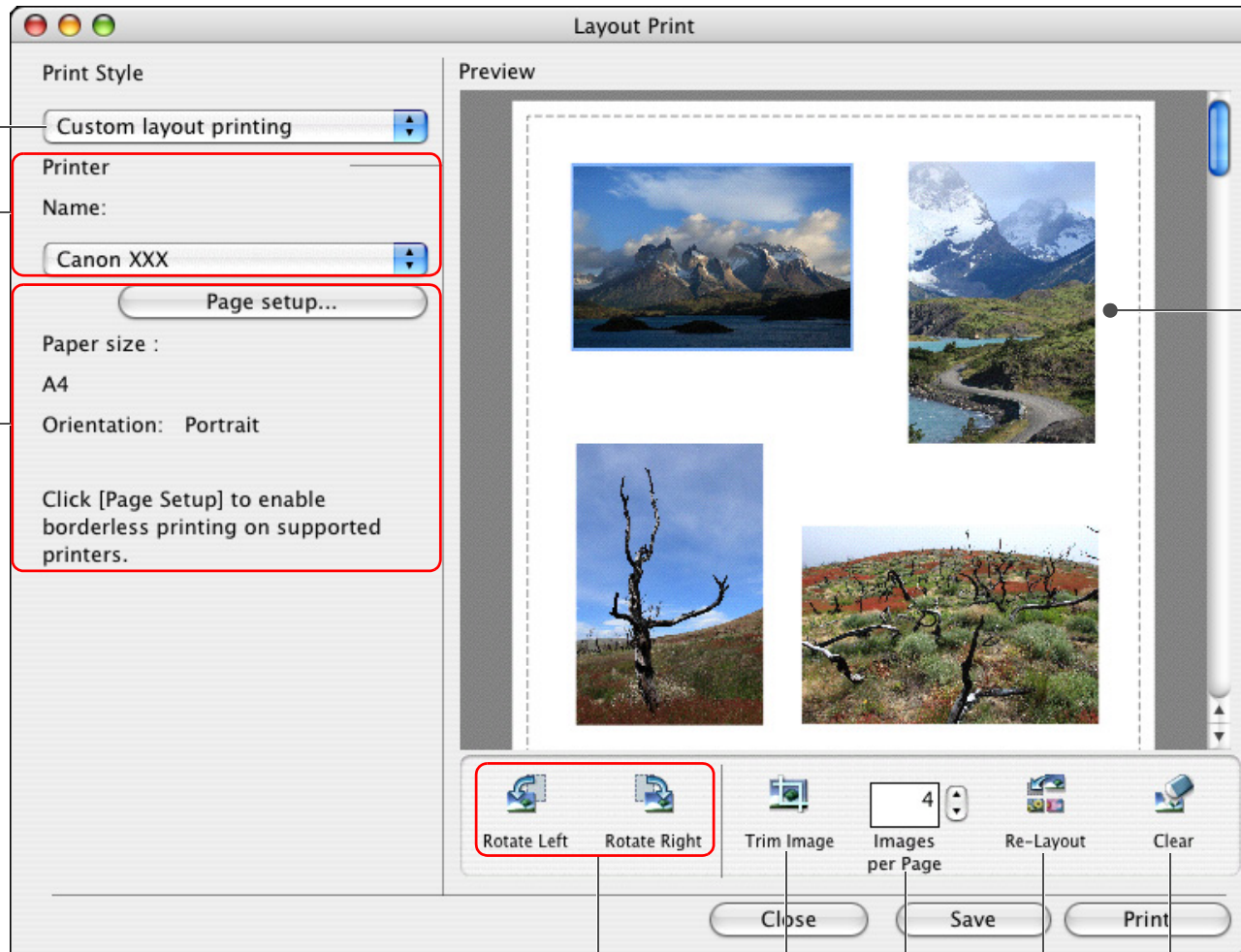
Contents Lookup

Index

Sets the printing style

Printer selection and settings

Page settings



Print preview

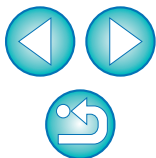
Rotates the image

Trims the image

Number of images per page

Reverts to the original condition

Deletes an image







# Contents Lookup

## Downloading Images to Your Computer

- Download images by connecting your camera and computer → p.7
- Download images using a card reader → p.8

## Image Checking

- Look through → p.10
- Enlarge and view → p.11, p.16
- Check efficiently → p.19
- Compare multiple images → p.40
- Check the shooting information such as shot date → p.41
- View as a slide show → p.31

## Image Printing

- Print one image on one page → p.13
- Arrange multiple images on one page and print → p.37
- Arrange images freely and print → p.38

## Organizing Images

- Sort by rating → p.17
- Move to a different location → p.21
- Move by entire folder to a different location → p.21
- Change the file name → p.22
- Delete → p.23
- Classify by shot date → p.44
- Search → p.46

## Image Editing

- Use automatic adjustment → p.25
- Adjust brightness/darkness → p.26
- Make colors more vivid → p.26
- Trim parts of an image → p.27
- Specify an aspect ratio that matches the size of the paper on which an image is to be printed → p.27
- Make an image sharp → p.29
- Insert text → p.28
- Correct red-eye → p.30
- Merge → p.50
- Adjust RAW images → p.51

## Utilizing Images

- Attach an image to an e-mail → p.33
- Make into computer wallpaper → p.34
- Make into a computer screen saver → p.35

## Converting Images

- Change the size → p.41
- Convert to a different type → p.41
- Convert a RAW image to a JPEG or TIFF image → p.51

Introduction

Table of Contents

Basic Operation

Advanced Operation

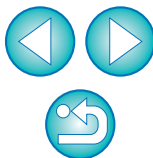
High-Level Functions

Preferences

Reference

Contents Lookup

Index



# Index

## A

Adding Sound to Images.....	55
Adjust JPEG Images.....	25, 47
Adjust RAW Images.....	51
Adjusting (JPEG or TIFF Image).....	25, 47
Adjusting in RGB.....	47
Adjusting the Brightness.....	26
Adjusting the Brightness Level.....	48
Adjusting the Saturation.....	26
Adjusting the Sharpness.....	29
Adjusting the Tone Curve.....	48
Automatic Adjustment.....	25
Correcting Red-eye.....	30
Adjusting (RAW image).....	51
Adjusting Color Saturation.....	70
Adjusting Color Tone.....	70
Adjusting the Contrast.....	70
Adjusting the Sharpness.....	70
Adjusting White Balance.....	70
Click White Balance.....	70
Picture Style.....	70
Picture Style File.....	53
Adjusting Images in RGB.....	47
Adjusting the Brightness.....	26
Adjusting the Brightness Level.....	48
Adjusting the Saturation.....	26
Adjusting the Sharpness.....	29
Adjusting the Tone Curve.....	48
Attach an Image to an E-mail.....	33
Automatic Adjustment.....	25

## B

Batch Change the File Name of Images.....	44
Browser Window.....	→Main Window
Browser Window Settings (Preferences).....	57

## C

Change File Name.....	22
-----------------------	----

Change Folder Name.....	22
Change the Display Magnification.....	11
Changing the Size and Type of an Image and Saving.....	41
Checking the Shooting Information.....	41
Classifying the Images by Shot Date.....	44
Click White Balance.....	70
Color Management.....	57
Compare Multiple Images.....	40
Confirmation Dialog Box Settings (Preferences).....	58
Correcting Red-eye.....	30
Creating a Folder.....	20

## D

Delete	
Delete Folders.....	23
Delete Images.....	23
Delete the Software.....	62
Delete Folders.....	23
Delete Images.....	23
Delete the Software (Uninstalling).....	62
Deleting the IB (Uninstalling).....	62
Displaying Images Shot with Adobe RGB.....	61
Downloading an Image to Your Computer.....	7
Downloading Images from a Camera.....	7
Downloading Images from a Card Reader.....	8
Downloading Images.....	7
Downloading Images from a Card Reader.....	8

## E

Editing.....	→Adjusting
Enlarge Images.....	11, 17
Entering Comments.....	43
Exporting Shooting Information.....	42

## F

Favorite Folders.....	23
Full View Display.....	12

Introduction

Table of Contents

Basic Operation

Advanced Operation

High-Level Functions

Preferences

Reference

Contents Lookup

Index



<b>I</b>	
Index Printing .....	37
Insert Text .....	28
Inserting Text into Images .....	28
<b>K</b>	
Keywords Settings .....	43
<b>L</b>	
Layout Print Settings (Preferences) .....	59
Layout Printing .....	38
List Mode (Main Window) .....	10, 65
<b>M</b>	
Main Window (Browser Window) .....	7, 64, 65
Main Window (RAW Image Task) .....	51, 70
Merging Panorama Images .....	50
Move or Copy Folders .....	21
Move or Copy Images .....	21
<b>N</b>	
Navigator Window .....	17
<b>O</b>	
Operating with EOS Utility .....	7
<b>P</b>	
Photo Print Settings (Preferences) .....	59
Photo Printing .....	13
Picture Style File .....	53
Playing Back Sound .....	55
Preferences .....	57
Browser Window Settings .....	57
Confirmation Dialog Box Settings .....	58
Layout Print Settings .....	59
Photo Print Settings .....	59
Processing When Rotating Settings .....	59
Register Application Settings .....	59
Viewer Window Settings .....	58

Preview Mode (Main Window) .....	9, 19, 64
Printing	
Index Printing .....	37
Layout Printing .....	38
Photo Printing .....	13
Processing When Rotating Settings (Preferences) .....	59
<b>Q</b>	
Quitting IB .....	14
<b>R</b>	
Ratings .....	17
RAW Image Task .....	51, 70
Register Application Settings (Preferences) .....	59
<b>S</b>	
Save the White Balance File .....	54
Saving the Tone Curve File .....	55
Searching for Images .....	46
Setting a Screen Saver .....	35
Setting a Wallpaper .....	34
Setting an Image as a Screen Saver .....	35
Setting an Image as Wallpaper .....	34
Slide Show .....	31
Starting up IB .....	7
Supported Images .....	63
Synchronize Display .....	40
System Requirements .....	63
<b>T</b>	
Thumbnail Display (Main Window) .....	10
Transfer Images to other Image Editing Software .....	49
Trimming .....	27
Trimming an Image .....	27
<b>V</b>	
View an Image .....	9
Viewer Window .....	12, 16, 66

Introduction

Table of Contents

Basic Operation

Advanced Operation

High-Level Functions

4 Preferences

Reference

Contents Lookup

Index



Viewer Window Settings (Preferences) ..... 58

**W**

White Balance..... 70  
    Click White Balance ..... 70

## About This Instruction Manual

- It is prohibited to reproduce, in whole or part, the contents of this Instruction Manual without permission.
- Canon may change without notice the software specifications and contents of this Instruction Manual.
- The software screens and displays printed in this Instruction Manual may differ slightly from the actual software.
- The content of this Instruction Manual has been reviewed thoroughly. However, if you should notice any errors or omissions, please contact a Canon Service Center.
- Please note that irrespective of the above-mentioned, Canon does not take responsibility for the outcome of the operation of the software.

## Trademark Acknowledgments

- Macintosh is a trademark of Apple Inc., registered in the United States and other countries.
- Other names and products not mentioned above may be registered trademarks or trademarks of their respective companies.

Introduction

Table of Contents

Basic Operation

Advanced Operation

High-Level Functions

Preferences

Reference

Contents Lookup

Index

