

User Manual

IPWF-P30-VP

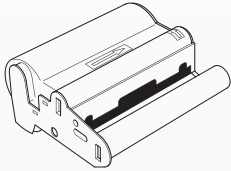


[VuPoint][®]
Solutions

Contents

Package Contents	03
Getting Started	04
Replacing the Cartridge	05
Compatible Devices & Connections	06
Print photos with Wi-Fi Connection (Apple devices)	
Download & Install the application from App Store	07
Wi-Fi Network Setup	08
Printing with Wi-Fi Connection	09
Print photos without Wi-Fi Connection (Apple devices)	
Using 'Take Photo' to print	10
'Choose Photo' to print	11
Copies and partition	12
'Create Photo' with templete	13
Print photos with Wi-Fi Connection (Android devices)	
Download & Install the application from Google Play	14
Wi-Fi Network Setup	15
Printing with Wi-Fi Connection	16
Print photos without Wi-Fi Connection (Android devices)	
Using 'Take Photo' to print	17
'Choose Photo' to print	18
Copies and partition	19
'Create Photo' with templete	20
Printing from PictBridge digital cameras	
Printing with PictBridge	21
LED Indications	22
Troubleshooting and Specification	23
Federal Communications Commission (FCC)	24

Package Contents



One Trial Cartridge (10 Photos)

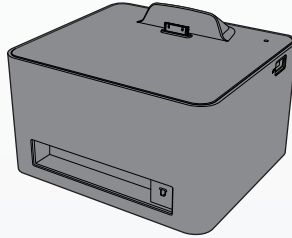
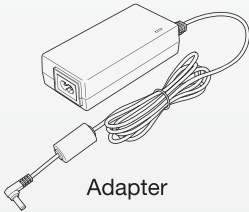
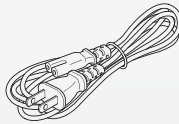


Photo Printer



Adapter



Power Cord



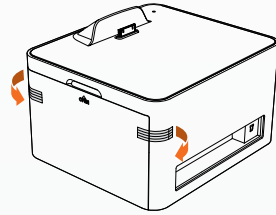
User Manual



When using this printer, do not place printer under direct sunlight or near heat sources. Avoid using the printer near water or any liquid. Water and moisture may cause short-circuit to the electronic components and lead to malfunctions. Make sure there is enough room to operate the printer to prevent low performance and breakdown of the printer.

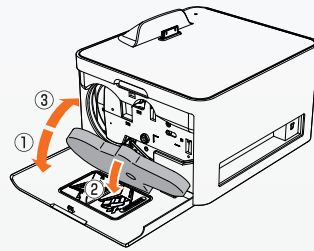
Getting Started

Peel off two tapes from the cartridge side panel



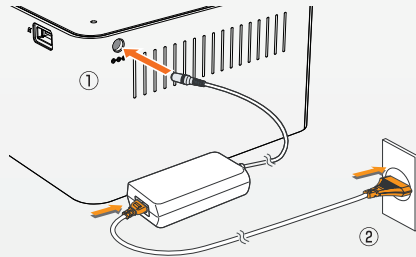
Remove the cartridge protection pad

- ① Open the cartridge side door panel
- ② Discard the cartridge protection pad
- ③ Close the side panel



Power Connection

- ① Connect the adapter to the printer
- ② Connect the power cord to the adaptor then plug the other end to a power outlet



Note

To turn off the printer, completely remove power adapter and cord from power outlet.



Caution

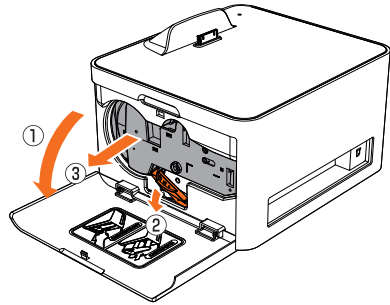
- Do not disassemble the printer or disconnect the power supply while the printer is powered on. Doing so may damage the printer and result in short-circuit.
- Do not use a generic power adapter other than the one supplied by VuPoint Solutions. Connecting this printer to a generic power adapter is dangerous and may lead to short-circuit resulting in fire or explosion.
- Do not reuse the protection pad.

Replacing the Cartridge

Trial cartridge is already placed inside (No installation required)

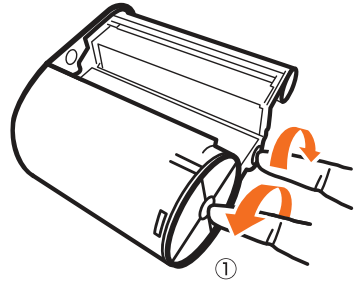
Cartridge release

- ① Open the cartridge side door panel
- ② Push the orange lever down
- ③ Pull out and discard empty cartridge



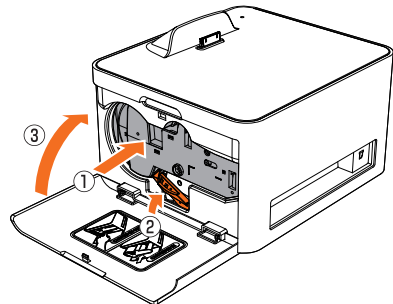
Cartridge replacement

- ① With your finger wind the paper counterclockwise then wind the ribbon clockwise until it is tight



Insert cartridge

- ① Insert the cartridge into the printer with the arrow pointing right
- ② Pull the orange lever up to lock cartridge in place
- ③ Close the side panel



Storage temperature : 50°F ~ 104°F (10°C ~ 40°C)
Relative humidity : 10% ~ 90%



-Do not use sharp tools such as knives and scissors when unpacking and installing the cartridge.
-Avoid touching the film when installing the cartridge.
-Keep the cartridge in cool areas and avoid direct sunlight and humidity.

Compatible Devices & Connections



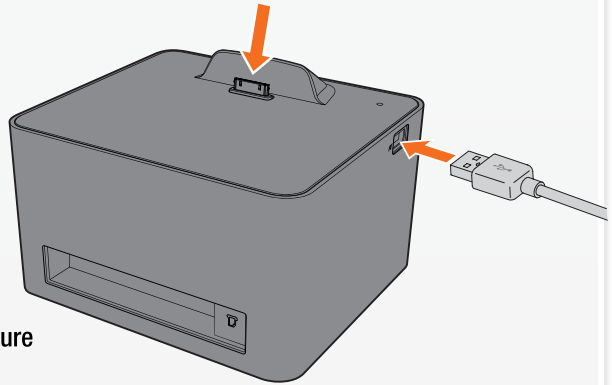
Apple® iOS 3.0 and above

- Compatible with iPod touch®, iPhone® and iPad®
- 30-pin connector to conveniently dock device to the printer



Android™ OS 2.0 and above

- Compatible with Android™ mobile and tablet
- Use the USB cable to connect to the printer



Digital Camera with PictBridge feature

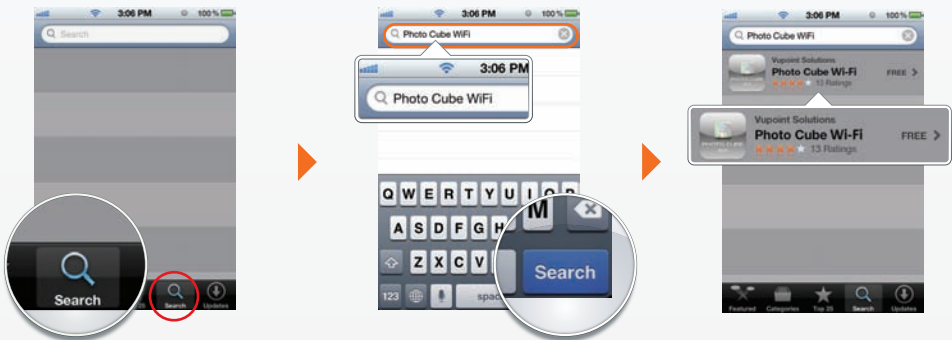
- Print directly from your digital camera
- Connect your digital camera with a USB cable

Download & Install the application from App StoreSM

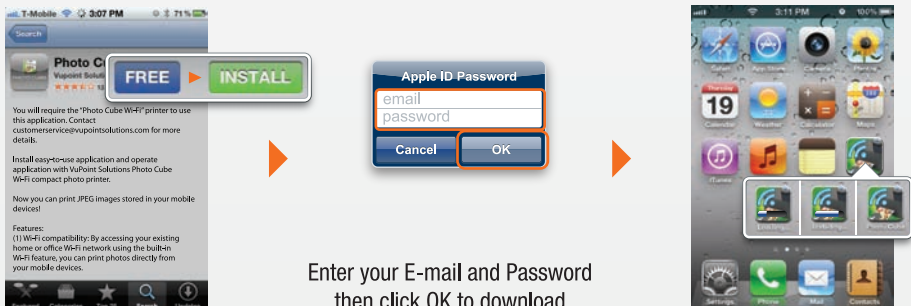
Launch App StoreSM on your iPod[®] touch, iPhone[®] and iPad[®]



Click 'Search' and search for 'Photo Cube Wi-Fi'



Hit the 'FREE' button to download Photo Cube Wi-Fi. It may ask you to enter your Apple ID and Password. After entering your ID and Password, the app will start installing



Enter your E-mail and Password then click OK to download

Wi-Fi Network Setup (Apple devices)

Tap the 'Settings' button. Wi-Fi Name will automatically match your existing Wi-Fi Network name

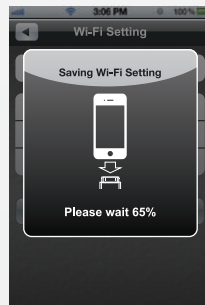
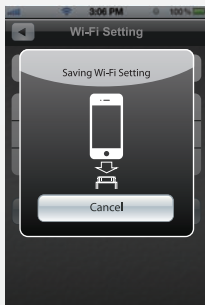


Note
Must be connected to an existing Wi-Fi connection

Enter the password for your existing Wi-Fi Router. Create a 'Printer Name' or use 'Photo Cube' name from default setting. Click 'Set Up Printer' to save network

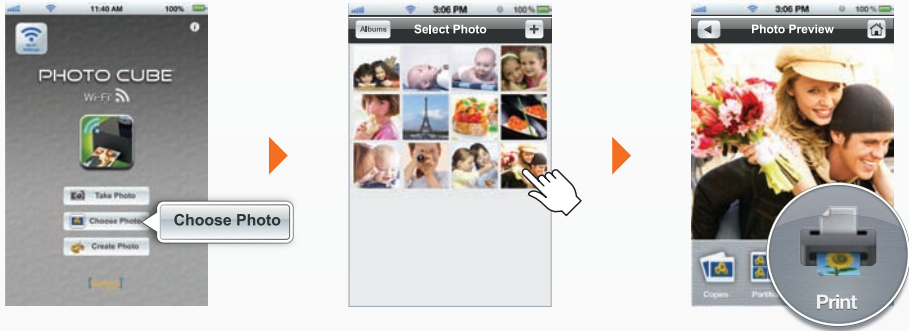


Dock the Phone to the printer. 'Success' message indicates set up complete. This process may take up to 10 minutes



Printing with Wi-Fi Connection (Apple devices)

Take a picture or choose from an album. Tap the 'Print' button to start printing



Select printer from printer list. 'Success' message will appear when printing is complete



Note

- When device is not connected via USB, a Wi-Fi printing window 'Connect via Wi-Fi' will pop up.
- When no Wi-Fi printer is found, dock or connect your mobile device via USB cable. Refer to page 10.



Using 'Take Photo' to print (Apple devices)

Take Photo

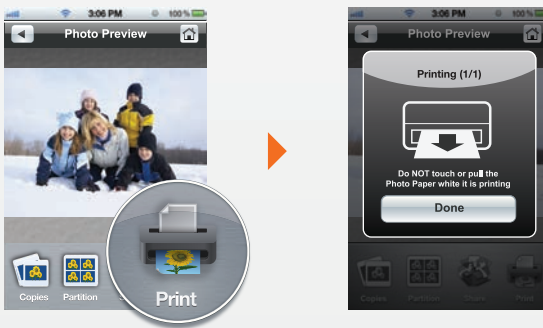
1. Launch Photo Cube Wi-Fi and choose 'Take Photo'



2. By using the built-in camera, take a photo



3. Hit 'Print' to print your photos from the app, then dock the device to the printer to print



Note

- To enable and use the "Take Photo" feature on the application, your device must have a built-in camera
- If the iPod®, iPhone® and iPad® is not connected to the printer, "Connect Device" message will appear

'Choose Photo' to print (Apple devices)

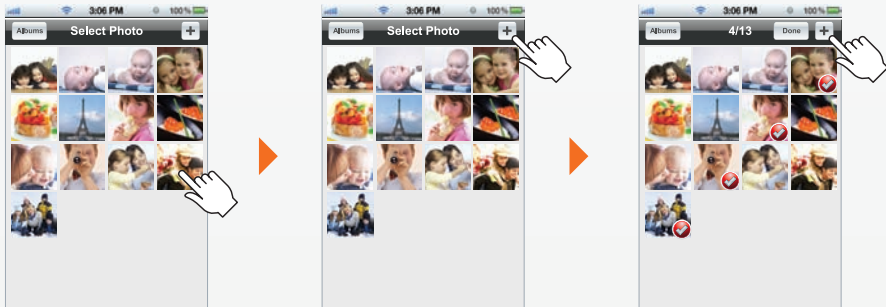
Print existing photos

1. Select the photo album and choose the photo that you would like to print.



Printing Queue (Optional)

2. Hit '+' button and choose photos that you want to print then press 'Done'. When using Print Queue feature, preview window will not be shown.



Tap 'Print' button to start photo printing. To return back to the main menu, tap 'Back'



! Caution

-While printing, do not touch or pull on the paper. Paper will retract in and out from the device 4 times before the printer will dispense the print photo completely.

- If you remove your mobile device from the dock or USB port while transferring data (0% - 100%), it may stop printing.

Copies and partition (Apple devices)

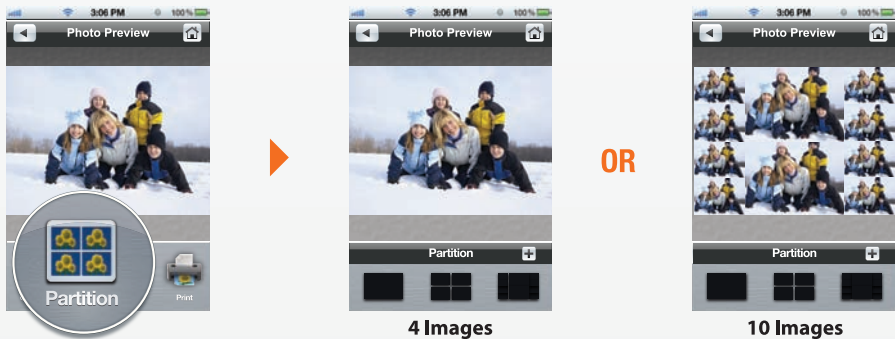
1. Set Copies (Select up to 10 copies)

In the preview window, choosing 'Copies' button will allow you to choose up to 10 copies to print in a row. After choosing copies press 'Print'.

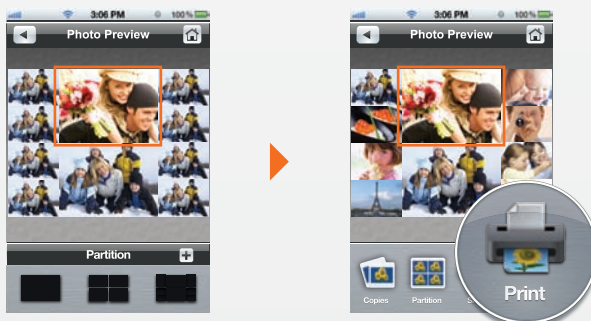


2. Create Partition

In the preview window, choose 'Partition' of 1, 4, or 10 images per sheet



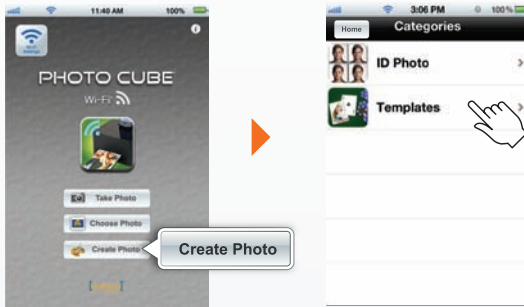
3. Insert other photos into partition.



'Create Photo' with templete (Apple devices)

Create Photo

1. Tap the '**Create Photo**' button to print passport photos or get creative and decorate your images with fun frames and templettes



2. Choose photo or take picture

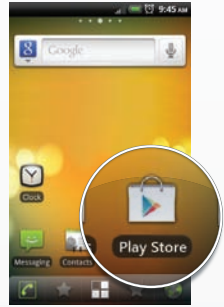


Download and install application from Google™ Play

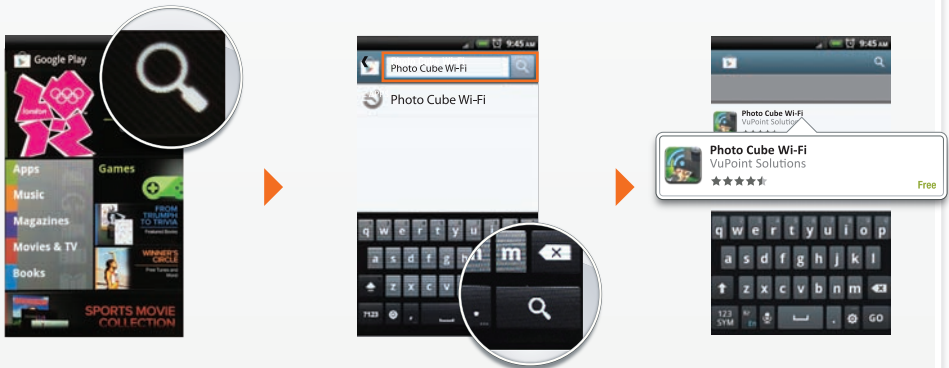
Enable 'USB debugging' mode on Android device to print

- 1- On Android device, access "Settings"
- 2- Click on "Applications"
- 3- Click on "Development"
- 4- Make sure "USB debugging" is checked and activated

Launch Google™ Play and choose 'Search'



Search for 'Photo Cube Wi-Fi'.



Hit 'Download' to install the Photo Cube Wi-Fi app

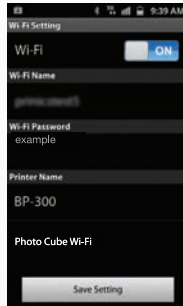



 **Note**

- Representation of screenshot images may vary based on the phones being used

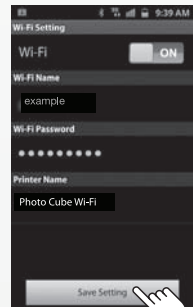
Wi-Fi Network Setup (Android devices)

Tap the 'Settings' button, Wi-Fi Name will automatically match your existing Wi-Fi Network name

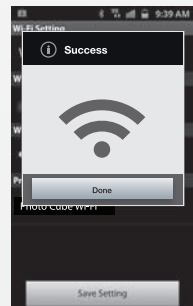
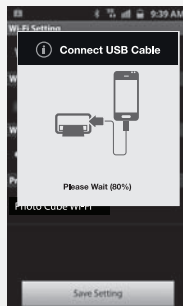
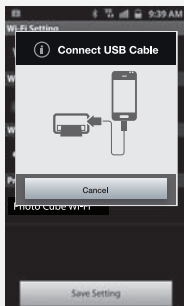


 Note
Must be connected to an existing Wi-Fi connection

Enter the password for your existing Wi-Fi Router. Create a 'Printer Name' or use 'Photo Cube Wi-Fi' from default setting. Click 'Save Setting' to save network.

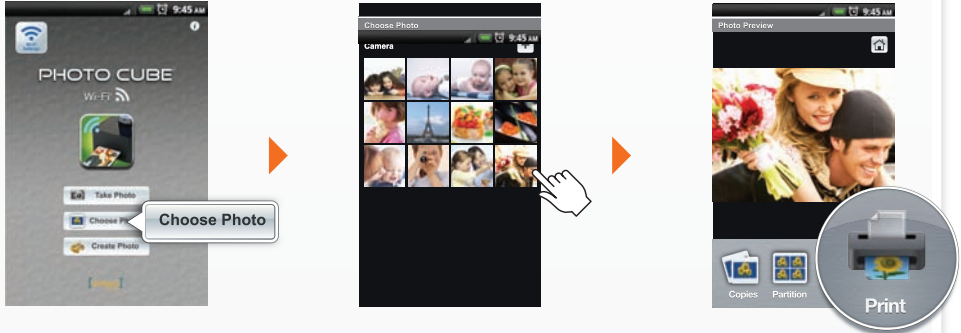


Connect USB cable to the printer. 'Success' message indicates setup complete. This process may take up to 10 minutes.

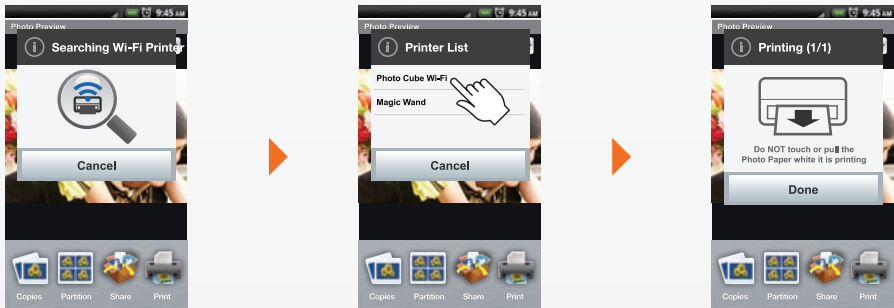


Printing with Wi-Fi Connection (Android devices)

Take a picture or choose from an album. Tap the 'Print' button.



Select Photo Cube Wi-Fi (or your own saved printer). 'Success' message will appear when printing is complete



Note

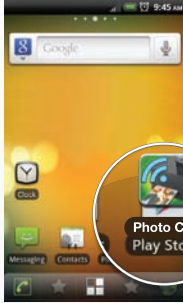
- Device is not connected via USB 'Connect via Wi-Fi' will display.
- When no Wi-Fi printer is found, dock or connect your mobile device via USB cable. Refer to page 17.



Using 'Take Photo' to print (Android devices)

Take Photo

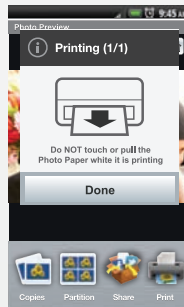
1. Launch Photo Cube Wi-Fi and choose 'Take Photo'



2. By using the built-in camera, take a photo



3. Hit 'Print' to print your photos from the app, then connect the mobile device to the printer to print.

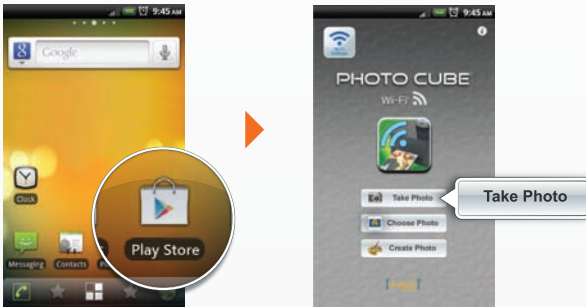


- To enable and use the 'Take Photo' feature on the application, your device must have a built-in camera.
- If Android mobile is not connected to the printer, the pop up window will say 'Connect Device'.

'Choose Photo' to print (Android devices)

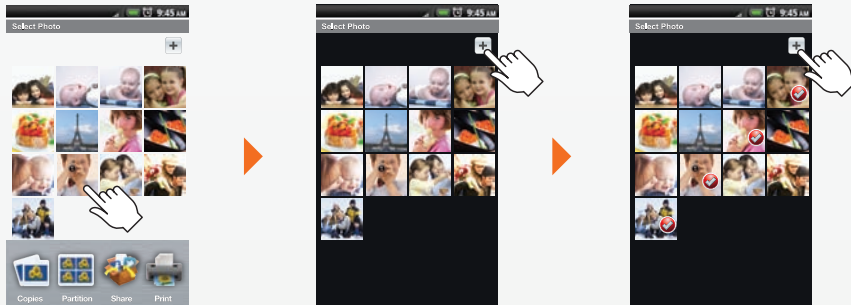
Print existing photos

1. Select the photo album and choose the photo that you would like to print.

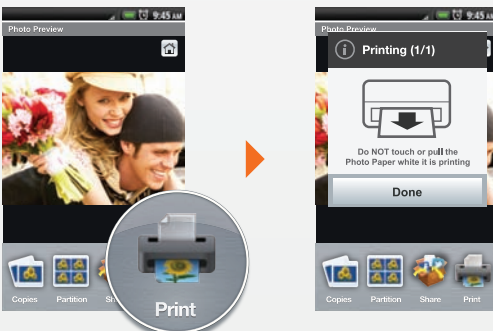


Print Queue (Optional)

2. Hit '+' button and choose photos that you want to print then press 'Done'. When using Printing Queue feature, preview window will not be shown.



Tap 'Print' to start photo printing. To return to the main menu, tap 'Back' button.



Caution !
- While printing, do not touch or pull on the photo paper. Paper will retract in and out from the device 4 times before the printer will dispense the printed photo completely.

- If you remove your mobile device from the dock or USB port while transferring data (0% - 100%), it may stop printing.

Copies and partition (Android devices)

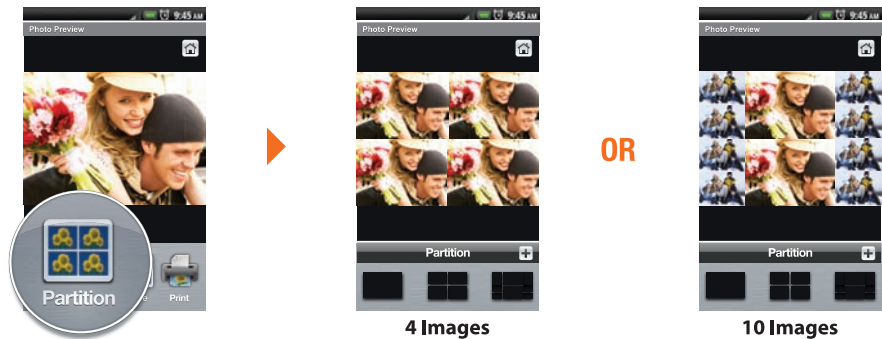
1. Set Copies (Select up to 10 copies)

In the preview window, choosing 'Copies' button will allow you to choose up to 10 copies to print in a row. After choosing copies, press 'Print'.

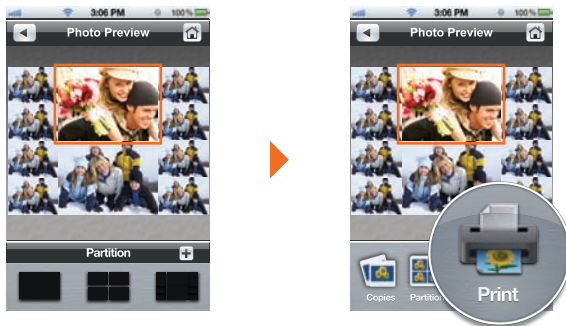


2. Create Partition

In the preview window, choose 'Partition' of 1, 4, or 10 images per sheet.



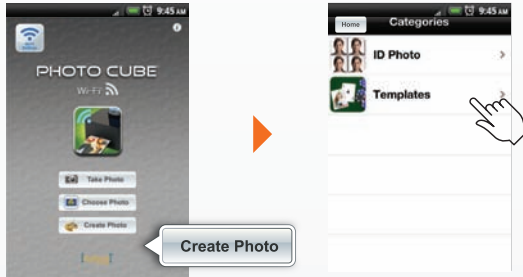
3. Insert other photos into partition.



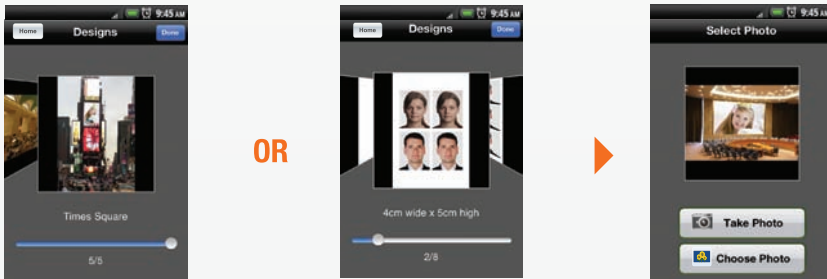
'Create Photo' with templete (Android devices)

Create Photo

1. Tap the **'Create Photo'** button to print passport photos or get creative and decorate your images with fun frames and templettes



2. Choose photo or take picture



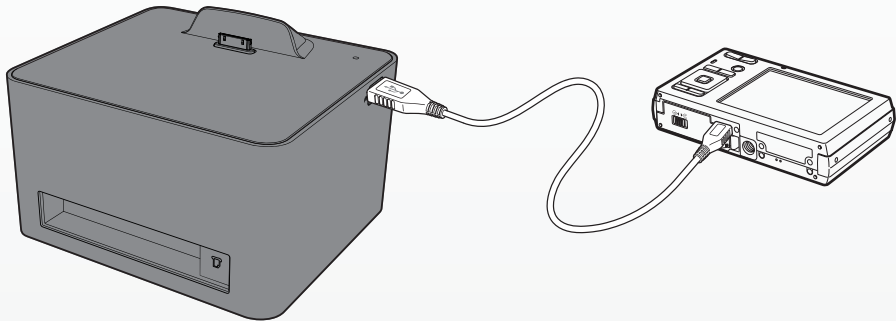
Template

Passport photo

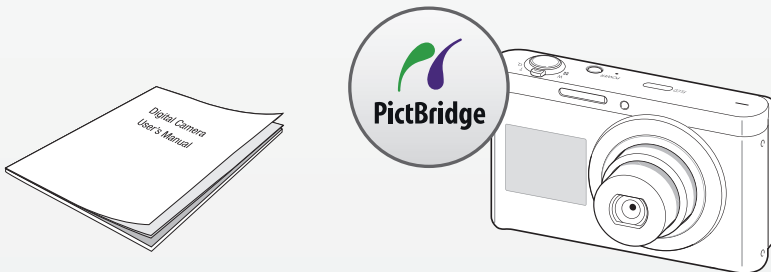
Printing with PictBridge

Directly print photos with a PictBridge-enabled camera

1. Connect the camera to the printer using only the USB cable that came with your camera.



2. Refer to the manual included with your camera for PictBridge connection.



Compatibility

PictBridge

Photo Format Supported

JPEG



Digital camera must be PictBridge-enabled. To find out if a camera is PictBridge compatible, look for the PictBridge logo on the packaging, manual for specifications, or contact the manufacturer for more information.



Caution

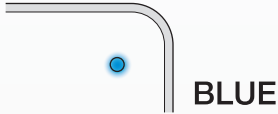
Some of the settings of your digital camera may not be reflected in the output.

LED Indications

1. Standby-mode / Charging

Printer is at idle mode. If a mobile device is docked or connected to the printer, the mobile device is at a charging state.

Stable blue LED light :



2. Printing

The printer is printing photos.

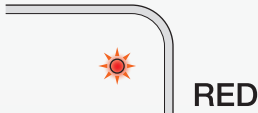
Blinking blue LED light :



3. Error

When an error occurs, please read error message from the Photo Cube Wi-Fi application. Follow the instructions on the screen to fix error.

Blinking red LED light :



4. Updating

Printer firmware is updating. The printer will automatically restart once updating is complete. Do not unplug power cord or turn off printer when updating

Stable purple LED light :



5. Searching Wi-Fi Router

The Printer is searching the Router.

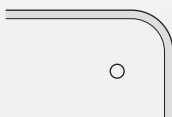
Blinking purple LED light :



6. Power-saving mode

Printer is in sleep mode.

LED light is off :



Troubleshooting & Specification

Troubleshooting

	Problem	Cause	Solution
1	No power on the printer	Power supply not connected	Please refer page 4 and reset the power connection
2	Photo is not printing properly	Cartridge is empty or not properly installed	Please refer page 5 and replace the empty cartridge with the new one
		Mobile device is not connected to the printer properly	Check the device connection with the printer. Reconnect or re-dock device
3	Paper Jam	Cartridge is not install properly	Reset the printer by disconnecting the power adapter from the power outlet and re-connect again Wind the paper and ribbon. Refer to page 5
4	App 'force quit'	Photo size is too big	Adjust the photo file size before printing the photo. (Maximum supported size is 3MB)
5	Not printing from digital camera	PictBridge compatibility	Digital camera must have PictBridge compatibility. To find out if a camera is PictBridge compatible, look for the PictBridge logo on the packaging, the manual for specs or contact the manufacture

Photo Cube Wi-Fi Specification

Printing Method	Dye Sublimation Thermal Transfer
Print Resolution	300 dpi x 300 dpi
Gradation	256 Gradations / 16.7 Million Colors
Photo Format Supported	JPEG Photo
Image File Size	Support maximum 3MB
Color Print Size	100 x 150 mm (4 x 6 inch)
Printing Time	55 sec (YMCO, exclude data processing)
Dimension	7.0" (L) x 4.0" (H) x 6.0" (W)
Weight	3.1 lbs
Power	AC adapter : Input 110 ~ 240 V / 50 ~ 60Hz, Output 24V / 2.5A

Photo Cartridge Specification

Paper Size	100 x 150 mm (4 x 6 inch)
Weight	9.2 oz.
Patented Technology	All-in-One Patented Technology (Paper and Ribbon are integrated into one package.) • No tear-off • Waterproof • Finger Print Proof

Federal Communications Commission (FCC)

COMPATIBILITY (mobile devices not included)

- Made for iPod touch (2nd, 3rd, and 4th generation) - iOS 3.0 and above
- Made for iPhone 4S, iPhone 4, iPhone 3GS and iPhone 3G - iOS 3.0 and above
- Made for iPad, iPad 2 and iPad 3rd generation - iOS 3.0 and above

- Android smartphones and tablets - OS 2.0 and above

Android™ and Google™ Play logo are trademarks of Google, Inc. Use of this trademark is subject to Google permission. All trademarks are the property of their respective owners.

FCC (Federal Communications Commission)



This device complies with Part 15 of the FCC Rules. Operation is subject to the following two conditions: (1) This device may not cause harmful interference, and (2) this device must accept any interference received, including interference that may cause undesired operation.

iPad, iPhone, and iPod touch are trademarks of Apple Inc., registered in the U.S. and other countries.

“Made for iPod”, “Made for iPhone” and “Made for iPad” mean that an electronic accessory has been designed to connect specifically to iPod, iPhone, or iPad, respectively, and has been certified by the developer to meet Apple performance standards. Apple is not responsible for the operation of this device or its compliance with safety and regulatory standards. Please note that the use of this accessory with iPod, iPhone, or iPad may affect wireless performance.

Android™ and Google™ Play are trademarks of Google Inc. Use of this trademarks is subject to Google permission. Facebook® is a registered trademark of Facebook, Inc. All trademarks are the property of their respective owners.