

# 4K Wi-Fi Office Clock

## SKU: HC4KWiFiClock



USER MANUAL  
FCC CE

1

### Before You Start

1. You must download the **HDlivecam Pro** app onto your smartphone device. It is available from the Google Play or iPhone App store.
2. If you wish to enable Micro SD card recording, you must insert a card into the slot. See panel 4 to find the slot.
3. We recommend using plug-in power with this device. Use the USB port on the back to connect the device to the included AC wall adapter, then plug the adapter into a functioning wall outlet.

5

1. From the home screen of the app, tap "Set up camera Wi-Fi".
2. Select your personal Wi-Fi network from the list of available networks, enter your Wi-Fi password, and select "OK".
3. Wait until the loading bar reaches 100%, and a "Camera Name" screen will open.
4. Tap "Next Step" to add the device.
5. Once the "Refreshing" bar at the top reaches 100%, your device has successfully connected, and you may now view the live-stream from anywhere your phone has internet access.

9

Thank you for purchasing the

**HC4KWiFiClock!**

Please read this manual before operating the device, and keep it handy.

Your purchase should include:

- 1 x HC4KWiFiClock
- 1 x AC Adapter
- 1 x USB Cable

1 x Instruction Manual (this)

Contact **770-694-6921** if you are missing any of these components.

2

### How to Adjust Clock Time

1. Turn on the device by switching the On/Off Switch to the On position (see panel 4).
2. Press the Set button on the top of the clock. The hours selection should flash. Press the Plus button until the correct hour is displayed.
3. Press the Set button once again, and the minutes selection should flash. Press the Plus button until the correct minute is displayed.
4. Press the Set button once more to set the hour/minute.

### Connecting Your Device (Part 1)

6

### How to Set up Motion Detection Alerts

1. Open the HDlivecam App, and tap the settings wheel.
2. Go to Scheduled Recording and make sure the switch is in the Off position.
3. Then go to Alert Settings and enable Motion Detection.
4. Your device will alert you when motion is detected.

### Further Information on App

#### Icons

See chart below for further information on

10

### Get familiar with your device!

#### Front View



- a. Clock Set Button,
- b. Time Plus Button,
- c. Night Vision LEDs,
- d. Camera Lens, e. Time Display

3

In order to view your camera feed remotely, you must complete the following two-part sequence of steps.

1. The Wi-Fi on your device should activate when you power it on.
2. Turn on your smartphone's Wi-Fi.
3. Open the HDlivecam Pro app on your phone. You will need to register an account and login in order to use this app.
4. Once logged in to the app, tap the "+" button to add a new device, then tap "add by AP hotspot".
5. Tap "Next Step".
6. Tap "Setup Wi-Fi" to enter into your phone's Wi-Fi settings, and select the clock's

7

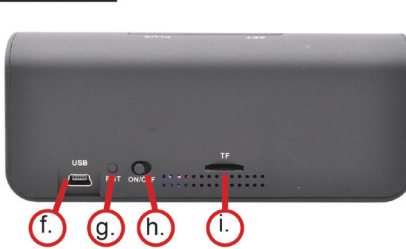
the icons in your app.

Add Device	Device Lists	Night Vision
Share Device	Alarm Events	Full Screen
Scene Switch	Images/Videos	Left/Right
Alarm Events	My Profile	Up/Down
Cloud Storage	Speaker	Indicator Light On/Off
SD Card Storage	Video Record	Voice Intercom
Settings Menu	Snapshot	Resolution Rate

11

### Get familiar with your device!

#### Back View



- f. USB Port,
- g. Reset Button,
- h. On/Off Switch,
- i. Micro SD Card Slot

4

Wi-Fi signal from the list.

*NOTE: It will be a string of numbers and letters with CARE-AP- at the beginning. NOTE: Some Android devices may produce a warning that the network has no internet access. Choose to connect to the network anyway.*

7. Once connected, the app will ask if you wish to view the current live-stream. Select "OK".

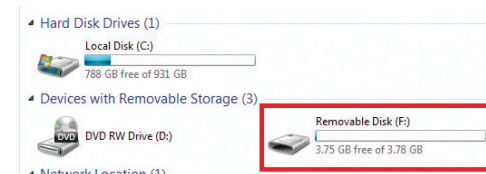
*NOTE: This only connects the camera to your phone. You will need to complete Part 2 in order to live-stream from anywhere.*

### Connecting Your Device (Part 2)

8

### How to Retrieve Files to Your PC

1. Switch the clock's On/Off Switch to the Off position.
2. Remove the MicroSD card from your device (see top of page to find the SD card slot).
3. Use a MicroSD card reader (not provided) to connect the MicroSD card to your PC via the USB port.



12

4. Locate the "Removable Disk" inside the (My) Computer folder. (Start > Computer > Removable Disk)

Or....

The device will automatically pop up on your screen when you plug it in. (AutoPlay Removable Disk > Open folder to view files)

5. These files are your videos/images. Double click on the files you want to view (we recommend VLC player).

*NOTE: You can also view and delete your files through the app by selecting the "SD card storage" icon.*

13

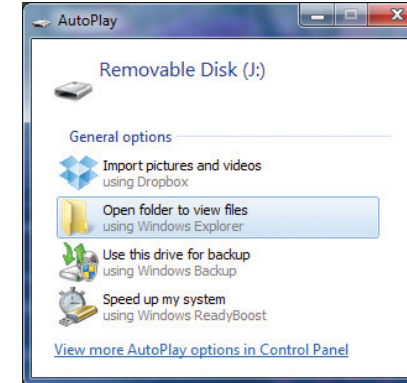
Solution 2: Make sure the charging cable is securely inserted into the device and into the power source while charging.

Solution 3: We recommend using AC plug-in power.

**Problem: The device failed to connect to my Wi-Fi router.**

Solution: Click "Cancel" and check your phone's Wi-Fi settings to see if the device's signal has disappeared. If it has, go back to the app, and check to see if you can live-stream. If so, the connection was successful, and the app displayed the wrong message by accident.

17



14

**Problem: My device won't send me motion detection alerts even though I have it set to.**

Solution: Make sure the scheduled recording is Off and the motion detection is On. Otherwise, the app will prioritize scheduled recording over the alerts.

**Problem: The live-stream is glitching/skipping.**

Solution: You must choose a streaming resolution that your internet can handle. Please tap the "Resolution Rate" icon to adjust this setting.

18

### Copying and Deleting Your Files

The video files are just like any other file on your computer, and they can be managed in the exact same manner.

**To save a file**, you want to select the file, right click your mouse on the file name, and choose "Copy" from the dropdown menu.

Next, go to the location you want to save the file to, right click your mouse, and click "Paste" from the menu. This will **copy the file** to the new location. You can do this with multiple files at once by selecting multiple files and following the same procedure.

**To delete a file**, right click your mouse on the file name and choose "Delete" from

15

**Problem: I need to reset the device.**

Solution: Press the Reset Button on the back of the device for 10 seconds then release. This will reset the device to factory settings.

**Problem: The sound or video is unclear.**

Solution 1: The device needs charging. Please charge your device.  
Solution 2: Make sure you are using the recommended VLC Player software.

**For troubleshooting anything regarding the Cloud Services on the app, please contact mylesmillervm@gmail.com.** Minigadgets does not provide technical support for the

19

the dropdown menu. This will permanently **delete the file** from your SD card or computer. You can do this to multiple files by selecting multiple files and following the same procedure.

**If you are using a MAC**, you must **empty the trashcan** after you delete a file. Otherwise, the SD card will fill up with hidden files, and it will not record any new ones.

### Troubleshooting

**Problem: The device won't turn on.**

Solution 1: Charge the device for at least 4 hours before the first use.

16

Cloud Storage feature.

**Other problems:** Please call our technical support at **770-694-6923**.

20

### Specifications

<b>Streaming Resolution</b>	4K/1080P
<b>Video Resolution</b>	2K/1080P
<b>Video Format</b>	.DAT
<b>Battery Life</b>	4 Hours (daylight)
<b>Viewing Angle</b>	166°
<b>Type of Memory</b>	External Micro SD Card
<b>Memory Capacity</b>	128GB
<b>Recording Capacity</b>	1GB ≈ 3 Hours
<b>Time Date Stamp</b>	Yes
<b>Motion Detection Range</b>	Up to 20FT
<b>Player Software</b>	VLC Media Player
<b>USB Interface</b>	2.0 USB
<b>Operating Systems</b>	Windows XP & Up Mac OSX 10.5 & Up Linux

23

22

21