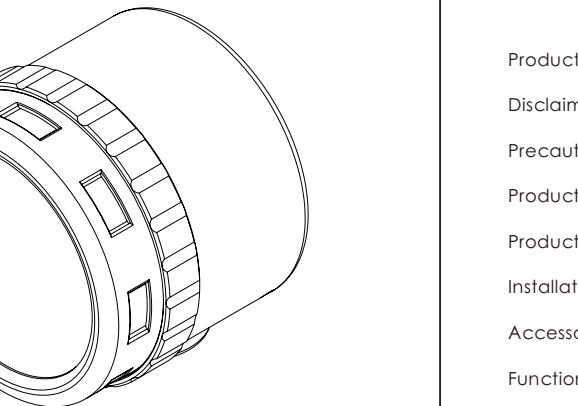




Web: www.gvml.com
 B&H Email: bh@gvml.com
 GVM Email: support@gvml.com
 Amazon Email: amazonsupport@gvml.com
 Warehouse Add: 4301 N Delaware ave, unit D, PHILADELPHIA, PA19137, USA



C O N T E N T S

Product introduction ----- Page 1
 Disclaimers ----- Page 2
 Precautions ----- Page 2
 Product parameter ----- Page 3
 Product structure analysis ----- Page 4
 Installation method ----- Page 5-6
 Accessories installation method ----- Page 7
 Function introduction and instruction ----- Page 8
 APP control and APP on-line control ----- Page 9
 Use and preservation ----- Page 10
 Simple faults and troubleshooting ----- Page 11
 Packing list ----- Page 12

PRODUCT INTRODUCTION

Welcome to "GVM-FS03R". This product is specially designed for senior photography enthusiasts. The product is suitable for live / outdoor / studio photography, and also for youtube video shooting. The main features of the product are:

- Step-less adjustable RGB color and dual color temperature, brightness / color temperature / hue / color purity can be controlled at will, color range 2000K-5600k. With one piece COB LED bulb, which is helpful to restore and enrich the color of objects and provide you with natural and vivid shooting effect.
- App intelligent control system, which can be controlled by your intelligent mobile device.
- Ip68 waterproof, compact and lightweight, and built-in battery power supply, which makes outdoor shooting portable.
- The product can simulate 8 kinds of scene lights: Lightning, Police Car, Candlelight, TV, Bad Light Bulb, Party, Disco, Paparazzi.

We believe that once using our product correctly, you can make huge progress when shooting. Before using the product, you are strongly recommended to read the instructions below carefully.

DISCLAIMERS

- Before using this product, please read the instructions carefully and make sure use the product correctly. If you don't obey the instructions and warnings, you maybe cause harm to yourself and the people around, or even damage the product and other things around.
- Once you use this product, you are deemed to have read the disclaimer and warning carefully, understand and acknowledge all the terms and contents of this statement, and promise to take full responsibility for the use of this product and possible consequences.

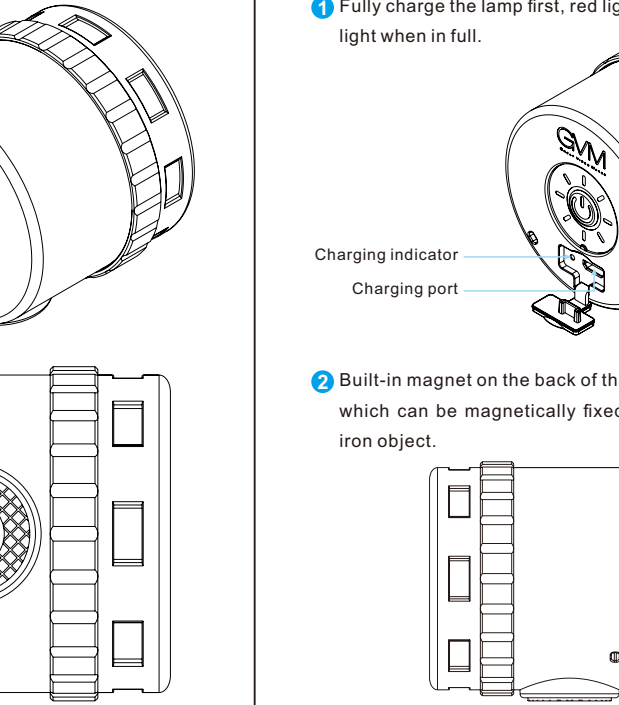
PRECAUTIONS

- Please use DC5V charger to charge the light.
- The light is not anti-corrosion. Do not let it come into contact with any corrosive liquid.
- When using the light, ensure that the light is placed firmly to prevent it from being damaged by falling.
- When not using the light for a long time, please turn it off to save energy consumption.

PRODUCT DETAIL

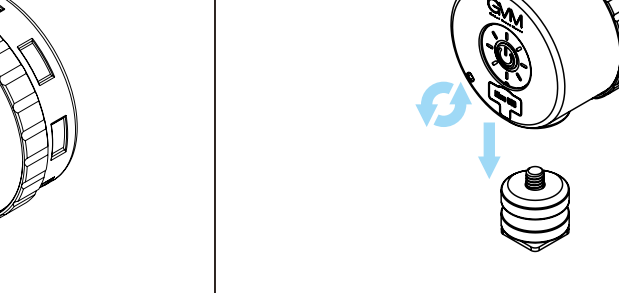
- Brand : GVM
- Product Name : Photography Lights
- Product Type : Photography Fill Light
- Product model : GVM-FS03R
- Product material : Aluminum alloy + PVC
- Lamp beads quantity : 1*COB LED Bead
- Color rendering index : ≥97
- Color temperature : 2000K-5600K
- Brightness : 1100lux/0.5m, 340lux/1m
- HUE : 0°-360°
- SAT : 0%-100%
- Light adjustment method : 5 levels dimming adjustment
- Features / Features : IP65 Waterproof, APP Control, High CRI COB LED Bead
- Power : 3W
- Charging Voltage : DC5V
- Charging Cable : Micro USB Cable
- Battery Life : 1.5 hours
- Power supply mode: Built-in battery
- Product Weight : 0.15KG
- Product Size (mm) : D59*52
- Heat dissipation: Natural heat dissipation
- Commodity origin : Huizhou , China

PRODUCT STRUCTURE ICON



INSTALLATION METHOD

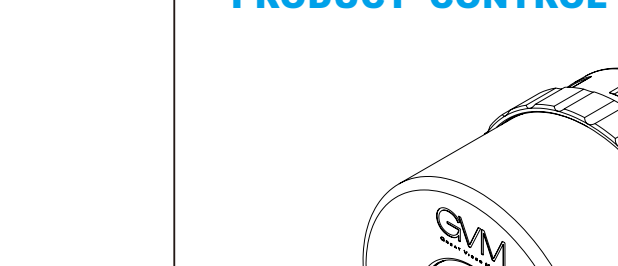
1 Fully charge the lamp first, red light when in charging and green light when in full.



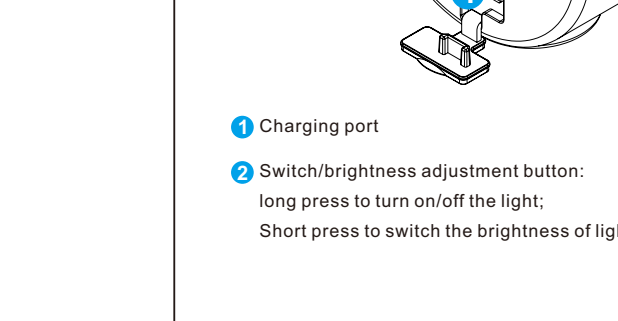
2 Built-in magnet on the back of the lamp, which can be magnetically fixed on an iron object.



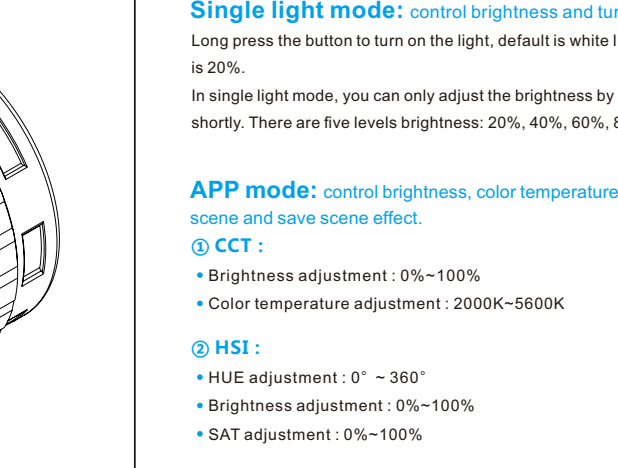
3 The installation steps of the hot shoe bracket are as below.



4 Install it on the camera as shown below.



DESCRIPTION OF PRODUCT CONTROL KEYS



- Charging port
- Switch/brightness adjustment button:
 long press to turn on/off the light;
 Short press to switch the brightness of light, 5 levels.

FUNCTION INSTRUCTION

Single light mode: control brightness and turn on / off
 Long press the button to turn on the light, default is white light and brightness is 20%.
 In single light mode, you can only adjust the brightness by pressing the button shortly. There are five levels brightness: 20%, 40%, 60%, 80%, 100%.

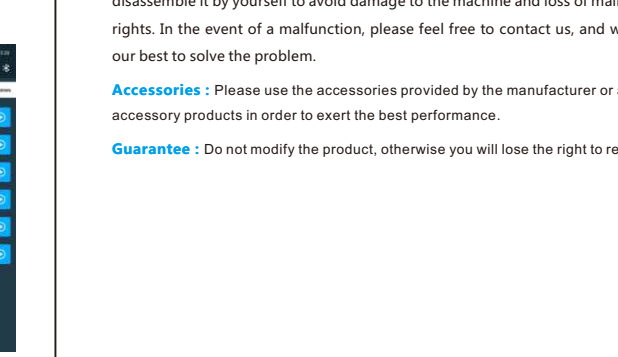
APP mode: control brightness, color temperature, hue, color purity, scene and save scene effect.

- CCT :**
 - Brightness adjustment : 0%~100%
 - Color temperature adjustment : 2000K-5600K
- HSI :**
 - HUE adjustment : 0° ~ 360°
 - Brightness adjustment : 0%~100%
 - SAT adjustment : 0%~100%
- Scene :**
 The scene light effect can be adjusted, there are 8 kinds of scene light effects: Lightning, Police Car, Candlelight, TV, Bad Light Bulb, Party, Disco, Paparazzi.
- My Scene :**
 It can store 6 custom light effects in "My Scene". After setting the light effect parameters → click the " " icon in the upper right corner → pop up to "save current scene" small window → click "confirm". At this time you can find the light effect in "My Scene".

APP CONTROL AND APP ON-LINE CONTROL

Scan the QR code on the back of the manual to download the APP

Turn on the camera light and open the "GVM LED" application software on your phone (the phone needs to turn on Bluetooth and GPS), and then enter the Bluetooth searching interface → find the Bluetooth named "BT_LED" and connect it → waiting for connection → automatically enter APP control Interface after successful connection. At this time, you can control the camera light through APP.



USE AND PRESERVATION

Do not put the product in a highly humid, strong electromagnetic field, direct sunlight, high-temperature environment. If not use the product for a long time, disconnect the power and take out the battery.

Cleaning : Please use a damp cloth instead of any detergent or soluble liquid to avoid damaging the surface layer.

Power : Please use the charging cable within the required range to charge the light.

Repairing : If there is a malfunction or performance degradation, please do not disassemble it by yourself to avoid damage to the machine and loss of maintenance rights. In the event of a malfunction, please feel free to contact us, and we will do our best to solve the problem.

Accessories : Please use the accessories provided by the manufacturer or approved accessory products in order to exert the best performance.

Guarantee : Do not modify the product, otherwise you will lose the right to repair.

SIMPLE FAULTS AND TROUBLESHOOTING

Phenomenon	Check the product	Solution
APP can't connect / can't control	Check if the Bluetooth connection is successful	Normal steps: ① Turn on Bluetooth and GPS on the phone; ② Open the APP, search and connect to Bluetooth BT_LED
Color cannot be adjusted	Check whether the color purity SAT value is too low or 0; the color purity value is 100, the color difference is the most obvious.	Increase the color purity SAT value in HSI mode

PACKING LIST

Name	Quantity			Notes
	GVM-FS03R			
Photography lights	1			
Hot Shoe Bracket	1			
Micro USB Charging Cable	1			
Lanyard	1			
User Instructions	1			