

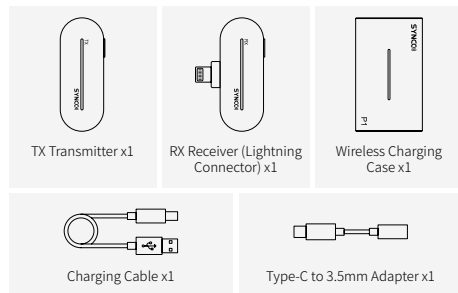
Microphone P1L >>> User Manual

Thank you for choosing SYNCO product.  
Please read this manual carefully before use and follow all instructions mentioned herein.

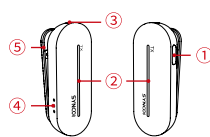
## Caring For Your SYNCO Product

- Please keep the product in a dry, clean, dust-free environment.
- Keep corrosive chemicals, liquids and heat source away from the product to prevent mechanics damage.
- Use only a soft and dry cloth for cleaning the product.
- Malfunction may be caused by dropping, impact of external force.
- Do not attempt to disassemble the product. Doing so voids warranty.
- Please have the product checked or repaired by authorized technicians if any malfunctions happened.
- Failure to follow all the instructions may result in mechanics damage.
- Warranty does not apply to human errors.

## Package List

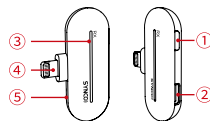


## Product Instruction



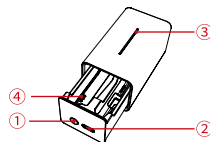
### TX Transmitter

- ① Power
- ② Working Indicators
- ③ Built-in Mic
- ④ Contacts
- ⑤ Pocket Clip



### RX Receiver

- ① Vocal Effects
- ② Type-C Port
- ③ Working Indicators
- ④ Connector
- ⑤ Contacts



### Wireless Charging Case

- ① Pairing/ Power Prompt
- ② Type-C Port
- ③ Working Indicators
- ④ Contacts

Indicator — Transmitter (Double press the Power button to turn off light effect)

Working Indicators (White Light)	
Flash concurrently 	System unpaired
Single light flashes 	Low battery

Illuminate sequentially (Light effect on) 	System paired, normal working
Single light keeps on (Light effect off) 	System paired, normal working

### Working Indicators (Red Light)

Single light keeps on (In the case) 	Charging, and then turns off when fully charge
---	--

### Indicator — Receiver

Working Indicators (White Light)	
Flash concurrently 	System unpaired
Illuminate sequentially 	System paired
Single light keeps on & illuminate sequentially 	Original sound
Single light flashes twice & illuminate sequentially 	Vocal effects on

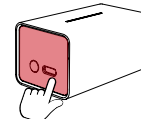
### Indicator — Wireless Charging Case

Working Indicators (White Light)	
Illuminate sequentially 	Pairing

## Operations

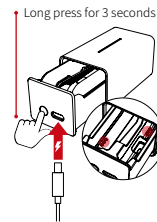
### 1. Usage

- ① Tap on the right side of charging case to pop out the drawer
- ② Take the TX and RX out
- ③ TX should boot automatically as it leaved the case, and switch itself off automatically when returning to the case.  
(Forcible switch: Long press the Power button on TX for 3 seconds)
- ④ RX should boot automatically as it is plugged into smartphone



### 2. Manual Pairing

- ① Place the TX and RX in the case with their contacts are connected with the case's
- ② Long press the Pairing button on the case for 3 seconds with the drawer open
- ③ The indicators on the TX and RX should light up and illuminate sequentially when pairing is successful



**Note:** The transmitter will automatically switch off if it is unpaired or disconnected for 5 minutes.

### 3. Charging

**Charge the TX:** Place the TX in the case with contacts connected with the case's.

**Charge the case:** Connect the case with power supply via the charging cable.

### 4. Check the power

**TX:** Short press the Power button, the indicators will light up according to remain power for 5 seconds

**Charging Case:** Short press the Power Prompt button, the indicators will light up according to remain power for 5 seconds

### 5. Use vocal effects

Short press the Vocal Effects button on the receiver to switch sound effects: Original >> Studio FX >> KTV FX >> Voice Amplification >> EDM (Electronic Dance Music) >> Baby FX >> Male to Female >> Female to Male >> Monster FX.

**Default effect:** Original

## 6. Charging phone device

Plug your phone charging cable into the Type-C Port on the receiver.

## 7. In-Ear monitoring

Plug the included Type-C to 3.5mm Adapter into the Type-C Port on the receiver. Then plug in your headphones to real-time monitor mic recording and device's backgrounding.

**Note:** The included Type-C to 3.5mm Adapter is exclusive, not available for other devices.

## Specifications

### TX Transmitter

Wireless Transmission	Digital 2.4GHz
RF Frequency Band	2400-2483.5MHz
Frequency Response	20Hz-20KHz
Working Distance	492ft/150m(LOS area); 164ft/50m(NLOS area)
Sampling Rate	48KHz
Bit Depth	16Bit
Sensitivity	-26dB
SNR	> 75dB
RF Output Power	10dB
Battery Type	Built-in Lithium Battery, 120mAh
Battery Charging Time	1.5H
Battery Life	5H
Dimensions	49x19x19 (mm)
Material	ABS
Weight	10g

### RX Receiver

Wireless Transmission	Digital 2.4GHz
RF Frequency Band	2400-2483.5MHz
Working Distance	492ft/150m(LOS area); 164ft/50m(NLOS area)
Sampling Rate	48KHz
Bit Depth	16Bit
Antenna	Built-in
Monitoring	3.5mm In-Ear Monitoring
Connector	Lightning Output
Power Input	Type-C
Dimensions	49x30x9 (mm)
Material	ABS
Weight	5g

### Wireless Charging Case

Battery Type	Built-in Lithium Battery, 300mAh
Battery Charging Time	1.5H
Charging Port	Type-C Port
Power Requirements	5V 2A
Dimensions	70x43x37 (mm)
Weight	58g

## Warranty

### Warranty Period

Thank you for purchasing SYNCO products.

1. Customers are entitled to free replacement or repair service in case of quality defect(s) found in the product under normal use within 30 days upon receipt of the product.

2. Original SYNCO products are entitled to **12-month** limited warranty service. The warranty period begins on the date of purchase of brand new, unused products by the first end-user.

Within the warranty period, if product defect or failure is attributable to material deflection or technological problem, the defective product or defective part will be repaired or replaced without charge (service and materials fee).

### Warranty Exclusions and Limitations

Faults resulted from inappropriate use of a product without following its operation specification

- Artificial damage, e.g. crash, squeeze, scratch, or soaking
- Modifications to a product by its user or a third party without prior written consent of SYNCO, e.g. replacement of element or circuit, label alteration
- The code on product is inconsistent with that of warranty certificate, or the code on the product or warranty certificate is altered or torn off
- All consumable accessory attached to a product, like cable, wind muff, battery
- Faults as a result of force majeure, such as fire, flood, lightning, etc.

### Warranty Claim Procedure

- If failure or any problem occurs to your product after purchase, please contact a local agent for assistance, or you can always contact SYNCO's customer service through email at [support@syncoaudio.com](mailto:support@syncoaudio.com).
- Please retain your sales receipt and warranty certificate as proof of purchase. If any of these documents is missing, only sales return or chargeable service will be provided.
- If the SYNCO product is out of the warranty coverage, the service and the parts cost will be charged.

## Guangzhou Zhiying Technology Co., Ltd

📍 Block 15th, No.200 Fangcun Avenue East, Liwan District, Guangzhou, China, 510000

✉ [support@syncoaudio.com](mailto:support@syncoaudio.com)

🌐 [www.syncoaudio.com](http://www.syncoaudio.com)

🌐 <https://www.facebook.com/syncomicrophones>

## WARRANTY CERTIFICATE

Please register your warranty. Meanwhile, you are welcomed to contact us via Email: [support@syncoaudio.com](mailto:support@syncoaudio.com)

USER INFORMATION	Customer Name:
	Phone Number:
	Email:
	Address:
SALES INFORMATION	Sales Date:
	Model:
	Product Code:
	Dealer:
REPAIR RECORD	Service Date:
	Technician:
	Issue:

RESULT  Solved  Unsolved  Returned(Replaced)