

Bluetooth Universal Audio Transmitter

Quick Start Guide



aluratek.com

model ABT01F
q5g Q10391 Copyright © 2015 Aluratek, Inc. All Rights Reserved.

Operation

Note: The pairing mode will last 2 minutes. ABT01F will power off automatically if no devices can be connected within 2 minutes.

Pairing with Bluetooth receivers such as speaker, earbud, and headset:

Please make sure the device supports A2DP profile. The pairing procedure will vary depending on the actual device. Please refer to the user guide of your device for detail instruction. The general pairing procedures are as follows:

1. Make sure ABT01F is turned Off.
2. Activate your device's Bluetooth function and set your device to pairing mode.
3. Activate ABT01F pairing mode by holding the power button for 8-10 seconds (LED flashes red and blue alternately).
4. ABT01F and your Bluetooth device will pair automatically (Please make sure they are next to each other).
5. After connecting successfully, the blue LED will flash.

Note: ABT01F will try to reconnect to the last paired device when it is powered ON / OFF again or when the Bluetooth transmitter is out of range.

Product Application

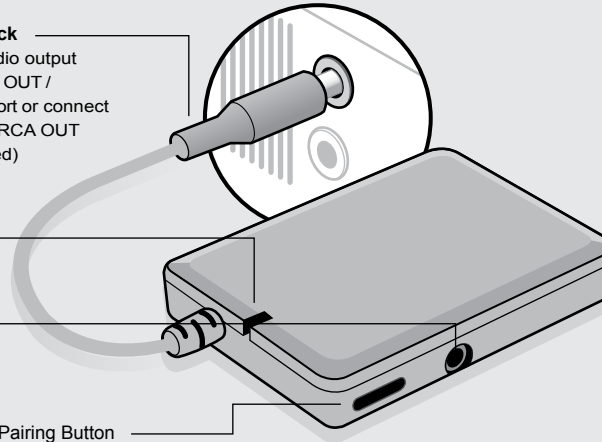
3.5 mm Stereo Jack

Connect to any audio output device with an AUX OUT / headset (3.5 mm) port or connect to any device with RCA OUT (RCA cable included)

LED status indicator

Charging port (cable Included)

Power ON / OFF / Pairing Button



Tech Support & Warranty Information

If you need further assistance, please contact the Aluratek support department for troubleshooting prior to returning this device.

E-mail: support@aluratek.com

Web: www.aluratek.com/helpdesk

Local (Irvine, CA): 714-586-8730

Toll free: 1-866-580-1978

Aluratek warrants this product against defect in material or workmanship for **1 Year** from the date of purchase.

For more information, please visit: <http://aluratek.com/warranty-return-policy>

You can register your product online at: <http://aluratek.com/product-registration>

Operation

Charging the battery

The battery is not fully charged and it is highly recommended that you charge ABT01F before you begin using it.

Note: Using ABT01F "out of the box" will not harm the device. You will experience reduced battery life as the unit will not be fully charged.

Connect the USB end of the cable provided to your PC or USB power adapter (not included) and the charger plug to the charging jack of ABT01F. Please charge the battery for a minimum of (3) hours. The Red LED will be on while charging. When charging is complete, the red LED will turn off.

Function	Operation	LED Indicator
Power On	Press and hold Power button for 3-5 seconds	Blue LED
Power Off	Press and hold Power button for 5-7 seconds	Red LED turns to Blue LED
Enter Pairing Mode	Ensure ABT01F is turned Off. Press and hold Power button for 8-10 seconds until LED flashes	LED flashes red and blue alternately

Radio and TV Interference Statement

WARNING!!! This equipment has been tested and found to comply with the limits of a Class B digital device, pursuant to part 15 of the FCC rules. These limits are designed to provide reasonable protection against harmful interference in a residential installation.

This equipment generates, uses and can radiate radio frequency energy and, if not installed and used in accordance with the instruction, may cause harmful interference to radio communications. However, there is no guarantee that interference will not occur in a particular installation. If this equipment does cause harmful interference to radio or television reception, which can be determined by turning the equipment off and on, the user is encouraged to try to correct the interference by whatever measures may be required to correct the interference.